



SHARING
THE HERD *female sale*
WEDNESDAY, DECEMBER 5, 2018 GRENFELL, SASKATCHEWAN

COW FAMILIES



SHARING THE HERD

double bar d farms

SHARING THE HERD

double bar d farms



Welcome to the 2018 edition of Sharing the Herd Production sale. It is with enthusiasm that I welcome you to view the offering whether it be in this catalog, videos online, catalog online or best yet, see them in person.

A heartfelt thank you to all bidders and buyers in last year's Share the Herd Sale and of course, our annual best of Both Worlds Bull Sale. Your continued support and confidence in our program is greatly appreciated and not taken for granted.

I believe this year's offering has some very interesting and exciting diversity of cattle that can meet the needs of many programs.

Starting with the bred Fleckvieh heifers who are sired by proven herdbulls, as well as some new herdsires. Many of this year's Fleckvieh heifers are polled (8 of them) with one very exciting Homozygous polled lot – check her out, as her earning potential is great. Rounding out the Fleckvieh division are two outstanding Fleck heifer calves that will add depth and dimension to any Fullblood program.

The Bred Purebreds are very strong with sires such as Captain Morgan and Law Maker with many of them carrying the service of none other than W/C Bankroll. At first showing, a Bankroll daughter won National Heifer Calf Champion in the Canadian Simmental show at Manitoba Ag Ex as well as Rayel Kaczmar winning the Simmental Junior division at Manitoba Ag Ex with her Bankroll Heifer.

Don't miss the opportunity to own the ever popular Half Blood heifers, as they are known to go out and work on their sometimes rough ranch conditions.

Most definitely in this year's sale, a highlight is the three black heifer calves. The two Bankrolls and one Dagger are right from the top of our heifer pen.

Don't miss the exciting opportunity to invest in our new and exciting herdsire Ruby's Turnpike 771E who we co own with Werning Cattle Company and Ruby's Cattle Co.

Double Bar D reserves the right to flush any of the females in the offering at our expense and buyers convenience.

Thank You for your interest in our Sharing the Herd Sale and we look forward to any inquiries that you may have.

See you all on Wednesday, December 5!

Regards,

Ken Dimler

DOUBLE BAR D FARMS

Box 580, Grenfell, SK S0G 2B0

Ken Dimler: 306.697.7204

Allan Hjertaas: 306.452.8427

kenshau@yourlink.ca

www.doublebardfarms.com



**HERDMAN ALLAN HJERTAAS
AND DAUGHTER REAGAN**



FUTURE OF DOUBLE BAR D



**DOUBLE BAR D
'FARMING/RANCHING' FAMILY**

Welcome to the Double Bar D fall female event, "Sharing the Herd Female Sale." It is with great anticipation to go over this year's offering, as it promises to extend some of the most exciting new genetics in North America. The Dimler families have always been an operation known for selecting the freshest and most sought after bloodlines in the seedstock business.

This year's offering may be smaller in terms of numbers but I can assure you, the quality of the offering will surpass one's expectations. The bred heifers are stout, big bodied, structurally sound with loads of phenotype and appeal. Many of these heifers are from an extensive embryo program and offer the chance to acquire some genetics that are not on the open market.

The 2018 heifer calves on offer will be led off by a special offering of the highly anticipated W/C Bankroll sire group. As you study this portion of the sale offering, you will find heifer calves for junior show projects to future donor cows; all backed from proven cow families that are designed to please the most astute cattleman. This portion of the offering promises to be very exciting and fresh.

The single semen lot portion, this year, of the very exciting Rubys Turnpike bull is one that I think everyone will get enthused about. The Dimler family was fortunate to be able to acquire this great young herd sire and will now offer a chance for you to get in on the ground level of these new, exciting genetics. Don't miss this opportunity.

The Double Bar D program has always produced a product that is timeless in its fashion. They are not chasing trends but concentrate on providing solid seedstock that are functional, sound, breeding cattle; stacking cow families and traits as they move forward. They are a trusted name in the seedstock business, not only because of this but as well as providing excellent customer service and satisfaction.

We at T Bar C Cattle Co. are very familiar with the cattle on offer and the program from which they originate. We can assist with your appraisals or any absentee bidding requirement you may have, if you are unable to attend sale day, with the utmost confidence and professionalism you deserve and expect.

For the Dimler families

Shane Michelson

T BAR C CATTLE CO. LTD.
PO Box 2330, Warman, Saskatchewan S0K 4S0
O: 306.933.4200 F: 306.934.0744
info@tbarc.com www.tbarc.com



CHRIS POLEY
306.220.5006



SHANE MICHELSON
403.363.9973



BEN WRIGHT
519.374.3335





SHARING THE HERD *female sale*

WEDNESDAY, DECEMBER 5, 2018 GRENFELL, SASKATCHEWAN

Offering 43 Females... Fleckvieh, Red Simmental, Black Simmental, Simm/Angus Bred and Open Females
1 Semen Lot

AUCTIONEERS:

Chris Poley 306-220-5006

SALES STAFF:

Shane Michelson 403-363-9973
Ben Wright 519-374-3335

SALE DAY PHONES:

Sale Barn 306-697-3582
Chris Poley 306-220-5006
Shane Michelson 403-363-9973
Ben Wright 519-374-3335

DOUBLE BAR D PHONES:

Ken Dimler 306-697-7204
Allan Hjertaas 306-452-8427
Richard Dimler 306-697-7298

SALES MANAGEMENT:

T Bar C Cattle Co. Ltd. 306-933-4200
Chris Poley 306-220-5006
Shane Michelson 403-363-9973
Ben Wright 519-374-3335

MARKETING AGENTS:

Danny Skeels 403-783-1217
Scott Werning 605-682-9610

Bouchard Livestock International

Brian Bouchard 403-813-7999
Darnell Fornwald 403-795-8030

Bohrson Marketing Services

Matt Criddle 306-539-6934
Darryl Snider 403-803-6532
Scott Bohrson 403-370-3010

Innovation Ag Marketing

Graham Blagg 530-913-6418

View the catalogue and videos online at www.BuyAgro.com

Videos of every lot are available on our website...

WWW.DOUBLEBARDFARMS.COM

AGENDA:

Tuesday, December 4, 2018

All day viewing of sale cattle, coffee and donuts

Wednesday, December 5, 2018

9:00 am Cattle penned for sale

12:00 am Complimentary Lunch

1:00 pm Double Bar D "Sharing The Herd" Fall Female Sale

SALE ACCOMMODATIONS:

Ramada Emerald Park, Regina	306-525-5300
Homestead Motel, Grenfell	306 607-2846
Whitewood Inn, Whitewood	306 735-2651
Sigma Inn & Suites, Melville	306-728-4688
Bear Claw Casino & Hotel, Carlyle	306-577-4588
Canalta Hotel, Moosomin	866-500-4938
Best Western, Moosomin	306-435-4700

FINANCING TERMS:

Terms are available on the females selling OAC and upon completion of a financial contract. Please contact Richard Dimler or Chris Poley for more details and pre-approval.

SALE DAY INSURANCE:

Alameda Agencies - Bonnie Thompson 306-489-2258 or C: 306-483-7311

CATALOGUE PRODUCTION by Today's Publishing Inc.

PHOTOGRAPHY:

Top Stock Magazine - Katie Songer

VIDEOS:

DLMS

ONLINE BIDDING:

Internet Bidding Available

DLMS
www.dlms.ca

For more information Call DLMS Reps:
Mark Shologan 780.699.5082
Whitney Bosovich 780.991-3025



Terms and Conditions

TERMS

The terms of the sale are cash or cheque, payable at par at the sale location. The right of property shall not pass until after settlement has been made; no invoicing on buyers in attendance unless previous arrangements have been made. Every animal sells to the highest bidder and in cases of disputes, the auctioneer's decision will be final. Announcements from the auction block will take precedence over the printed matter in the catalogue. Current exchange rates will be announced sale day. All monies are in Canadian funds.

Double Bar D reserves the right to flush any of the females in the offering at the seller's expense and buyer's convenience.

CERTIFICATE OF REGISTRATION

Each animal will carry papers issued by the Canadian Simmental Association. A certificate of registry duly transferred will be furnished to the buyer for each animal after payment has been made.

HEALTH

All animals in the sale have met all necessary health requirements.

GUARANTEE

Each animal becomes the purchaser's risk immediately after the animal is sold. All animals in this sale will be sold under the terms and guarantees set forth by the Canadian Simmental Association with regards to health, freedom from defects and from both reproductive and specific genetic unsoundness.

PREGNANCY INFORMATION

All serviceable age females have been pregnancy examined by an accredited veterinarian, giving an estimated length of gestation. This estimated gestation period shall be used only as a guideline to calving and is not a guarantee of actual service.

LIABILITIES

All persons attend the sale at their own risk. The seller, facility owner and sale manager assume no liability, legal or otherwise, for any accidents that occur. It is understood that T Bar C Cattle Co. (2013) Ltd. is acting only as a medium between buyer and seller and is not responsible for any failure on the part of either party to live up to his obligations. Neither does T Bar C Cattle Co. (2013) Ltd. assume any financial obligations to collect or enforce collection of any monies between parties and any legal action that may, in exceptional cases, be taken must be between the buyer and the seller. T Bar C Cattle Co. (2013) Ltd. assumes no responsibility for any credit extended by the seller to the buyer. The buyer must look to the seller for fulfillment of all guarantees and representations made hereunder.

DELIVERY

Assistance will be given in getting your purchases home. Each animal becomes the risk of the purchaser as soon as sold.

PHONE, MAIL, WIRE BIDS

Bidders unable to attend the sale may phone, wire or mail their bids and instructions to the sale manager, auctioneer or special representatives. Bids must be received in sufficient time prior to the sale.

INSURANCE

We strongly recommend that insurance is purchased for full value.

ERRORS

All announcements at sale time, written or oral, supersede any written material in the catalogue.

FULL SIBLINGS



21E

• Homozygous Polled

A real sale feature here, as Suze 21E is homozygous polled and chalked full of depth of pedigree and excellent phenotype. Dark red in color with tremendous volume, heart, girth and flank on a correct structure, 21E is setting up a very nice udder and whether she has a Balboa bull or heifer calf, you can inject your herd with a front pasture heifer calf or maybe your next herd bull.

AI bred to LFS Pol Balboa 40U on April 4, 2018. Safe to April 4 breeding.

1

DOUBLE BAR D *Suze* 21E

FLECKVIEH POLLED RLD 21E PT1206816 JAN. 21, 2017

ANCHOR "T" RUSTY 59G
STARWEST POL BLUEPRINT
PHS HOMOZYGOUS XCEPTIONAL

FUNDER STORM 8Y
DOUBLE BAR D SUZE 70Z
DOUBLE BAR D SUZETTE 201S

{ KLONDIKE GOLD RUSH 418B
ANCHOR "T" HELGA 10Y
CHAMPS BRAVO
WCC WELLS' PLD TALULAH 7T
BRITTAS STORM
JSF FELICITE
DOUBLE BARD MAKE M PLLED
DOUBLE BAR D SUZETTE

BW
82 lbs.

CE	BW	VW	YW	MILK	MCE	MWWT
7.0	4.2	68.9	100.3	31.4	31	65.9

2

DOUBLE BAR D *Suze* 10E

FULL BLOOD POLLED RLD 10E PT1206805 JAN. 15, 2017

ANCHOR "T" RUSTY 59G
STARWEST POL BLUEPRINT
PHS HOMOZYGOUS XCEPTIONAL

FUNDER STORM 8Y
DOUBLE BAR D SUZE 70Z
DOUBLE BAR D SUZETTE 201S

{ KLONDIKE GOLD RUSH 418B
ANCHOR "T" HELGA 10Y
CHAMPS BRAVO
WCC WELLS' PLD TALULAH 7T
BRITTAS STORM
JSF FELICITE
DOUBLE BARD MAKE M PLLED
DOUBLE BAR D SUZETTE

BW
83 lbs.

CE	BW	VW	YW	MILK	MCE	MWWT
7.1	4.6	73.0	106.0	27.1	3.3	63.6



10E

Full sibling to Lot 1, 10E follows suit very closely. A very attractive, nice fronted female on a well balanced and correct frame.

AI bred to LFS Pol Balboa 40U on April 8, 2018. Safe to April 8 breeding.



Double Bar D Suze 70Z

Dark red, smooth shouldered and tidy fronted. Adonis 603N dam and Arnold's Image grand dam are consistently very productive females whose progeny rise to the top every year.

AI bred to LFS Pol Balboa 40U on April 15, 2018. Safe to April 15 breeding.



28E

3

DOUBLE BAR D *Celine* 28E

FLECKVIEH POLLED RLD 28E P1206824 JAN. 24, 2017

ANCHOR "T" RUSTY 59G
STARWEST POL BLUEPRINT
PHS HOMOZYGOUS XCEPTIONAL

DOUBLE BAR D ADONIS 603N
DOUBLE BAR D CELINE 10X
DORA LEE CELINE FF22P

{ KLONDIKE GOLD RUSH 418B
ANCHOR "T" HELGA 10Y
CHAMPS BRAVO
WCC WELLS' PLD TALULAH 7T
SOLWAY ADONIS
BAR NONE BONNIE LASS
ABR SIR ARNOLDS IMAGE
DORA LEE CLAUDIA

BW
86 lbs.

CE	BW	VW	YW	MILK	MCE	MWWT
8.6	3.8	67.9	98.9	33.5	6.4	67.5

4

DOUBLE BAR D *Stella* 13E

FLECKVIEH POLLED RLD 13E P1206808 JAN. 17, 2017

ANCHOR "T" RUSTY 59G
STARWEST POL BLUEPRINT
PHS HOMOZYGOUS XCEPTIONAL

MFI JEREMIAH 9022
DOUBLE BAR D STELLA 64B
DOUBLE BAR D STELLA 522U

{ KLONDIKE GOLD RUSH 418B
ANCHOR "T" HELGA 10Y
CHAMPS BRAVO
WCC WELLS' PLD TALULAH 7T
GIBBONS JEREMIAH
MFI PETRA 2093
PROSTOCK EDISON
DOUBLE BAR D STELLA 184P

BW
82 lbs.

CE	BW	VW	YW	MILK	MCE	MWWT
10.9	3.1	69.8	103.1	34.6	5.3	69.5

Moderate and correct, gentle disposition. Note Juggernaut on the bottom side

Exposed to Starwest Pol Batman from May 15 to June 6, 2018.



13E



Solid, red, Full Fleck that arrived at Double Bar D in dam from Virginia Ranch. Dam 507C is an impressive own daughter of Canadian Neff and Barbi 46K. 422E is a very smooth made and well balanced female who is setting up a very good udder. An interesting twist on her service of Bankroll should make for a very good calf.

Exposed to W/C Bankroll 811D from Early May 1 to May 30, 2018.

422E

5

DOUBLE BAR D *Calendar Girl* 422

FLECKVIEH HORNED RLD 422E 1254442 JAN. 12, 2017

SPRUCEBURN STARFIRE 70S
APLX SANTANA 11Y
DORA LEE CHRISTINA FF28S

CANADIAN NEFF
VIRGINIA CALENDARGAL 507C
ANCHOR "T" BARBI 46K

FGAF SELDOM 835L
SPRUCEBURN RHONA 70R
DORA LEE TITAN FF11N
DORA LEE CYNTHIA

NEFF
THERRI
ANCHOR "T" TITANIC 22E
ANCHOR "T" ILSE 10E

BW
78 lbs.

CE	BW	VW	YW	MILK	MCE	MWWT
9.4	2.2	45.1	60.1	40.3	2.8	62.8

6

DOUBLE BAR D *Jwyla* 61E

FLECKVIEH HORNED RLD 61E 1206846 FEB. 11, 2017

DOUBLE BAR D CHESAPEAKE
DOUBLE BAR D CHANDLER 143
DOUBLE BAR D KLAUDIA 80T

MFI JEREMIAH 9022
DOUBLE BAR D TWYLA 92B
DOUBLE BAR D TWYLA 22X

SHAWACRES JAHARI 50L
MFI HELGA 4021
DOUBLE BAR D EVEREST 4R
DOUBLE BAR D KLAUDETTE

GIBBONS JEREMIAH
MFI PETRA 2093
DOUBLE BAR D ADONIS 603N
PHS SA TWILA

BW
87 lbs.

CE	BW	VW	YW	MILK	MCE	MWWT
6.0	4.8	64.9	94.6	32.9	1.0	65.4



61E is a real powerhouse female that will catch your eye. Powerful yet feminine and moves with great ease on a large foot. We are very pleased with the first Chandler heifers that have calved, as they have brood cow written all over them. 61E comes to you with a very solid pedigree with Juggernaut and Adonis 603N on bottom side.

Exposed to Starwest Pol Batman from May 1 to May 30, 2018.

61E

77E has a very gentle disposition and is heavily pigmented on a complete and feminine frame.
Exposed to Starwest Pol Batman from May 15 to June 6, 2018.



77E

7

DOUBLE BAR D *Lolita* 77E

FLECKVIEH HORNED RLD 77E 1254437 MAR. 10, 2017

DOUBLE BAR D CHESAPEAKE
DOUBLE BAR D CHANDLER 143
 DOUBLE BAR D KLAUDIA 80T

RV NICKELBACK 6U
DOUBLE BAR D LOLITA 188Z
 MFI LOLITA 4010

{ SHAWACRES JAHARI 50L
 MFI HELGA 4021
 DOUBLE BAR D EVEREST 4R
 DOUBLE BAR D KLAUDETTE
 GPCC HAFKENBERG 8F
 MISS JOHANNAH R24
 ANCHOR "T" METRO 4E
 MFI LOLITA 69M

BW
 86 lbs.

CE	BW	VW	YW	MILK	MCE	MWWT
7.4	3.5	62.6	92.3	29.4	2.0	60.7

8

DOUBLE BAR D *Effie* 376D

FLECKVIEH POLLED RLD 376D P1254510 OCT. 14, 2016

MFL UNIVERSE 28U
DOUBLE BAR D UNITED 176A
 MFI PETRA 4077

MFI JEREMIAH 9022
DOUBLE BAR D EFFIE 35A
 DOUBLE BAR D EFFIE 350S

{ BOLD
 MFL PETRA 95P
 SHAWACRES JAHARI 50L
 MFI PETRA 1053

{ GIBBONS JEREMIAH
 MFI PETRA 2093
 DOUBLE BAR MAKE M PLLED
 MRLN EFFIE

BW
 78 lbs.

CE	BW	VW	YW	MILK	MCE	MWWT
2.5	5.6	65.1	92.6	31.3	-2.2	63.8

An excellent polled United daughter whose dam is sired by none other than the great Juggernaut. Heavy hair coat with a lot of rib shape on a smooth made frame.
Exposed to Starwest Pol Batman from April 20 to May 15, 2018.



Juggernaut



376D



A very attractive female here with extra length of spine with a long square hip. Double goggled with extra pigmentation. Solid pedigree with Rogar, Joceline, Whistler and Suzette. **AI bred to LFS Pol Balboa 40U on April 17, 2018. Safe to April 17 breeding.**

9

DOUBLE BAR D *Susy* 8E

FLECKVIEH HORNED RLD 8E 1254508 JAN. 14, 2017

MRLN ROGAR
DOUBLE BAR D RIVAL 201A
DOUBLE BAR D JOCELINE

MFI WHISTLER 7165
DOUBLE BAR D SUSY 77X
DOUBLE BAR D SUSY 232T

{ ROGANT
GOLDL
DOUBLE BAR D LINCOLN
MRLN JOCELINE
MFI WHISTLER 47L
MFI PETRA 51K
BAR 5 SA HEMISPHERE 411R
DOUBLE BAR D SUZETTE

BW
84 lbs.

CE	BW	VW	YW	MILK	MCE	MWWT
2.6	7.0	74.4	110.7	27.9	2.0	65.1

10

DOUBLE BAR D *Kallie* 29E

FLECKVIEH HORNED RLD 29E 1206825 JAN. 24, 2017

MRLN ROGAR
DOUBLE BAR D RIVAL 201A
DOUBLE BAR D JOCELINE

SV BAVARIAN 7C
DOUBLE BAR D KALLIE 275Z
ICC STRO KAN

{ ROGANT
GOLDL
DOUBLE BAR D LINCOLN
MRLN JOCELINE
RASSO
ISA
TRIPLE S P STROMER
DDD KAN DIVA

BW
90 lbs.

CE	BW	VW	YW	MILK	MCE	MWWT
2.7	4.9	64.6	88.0	30.3	0.8	62.6



Double Bar D Rival 201A - Sire of Lot 10

29E has tremendous volume, thickness and has a large foot on a well balanced frame. Outcross and older pedigree on bottom side. **AI bred to Double Bar D Blueprint 11E on April 8, 2018. Safe to April 8 breeding.**

18E has a strong top on a very correct, well balanced frame. Good maternal pedigree on the bottom side going back to Antonius and the Flashy cow family. **AI bred to Starwest Pol Batman on May 10, 2018. Safe to May 10 breeding.**



18E

11

DOUBLE BAR D *Flashy* 18E

FLECKVIEH HORNED RLD 18E 1206813 JAN. 20, 2017

MRLN ROGAR
DOUBLE BAR D RIVAL 201A
DOUBLE BAR D JOCELINE

Z O NINER
PROSTOCK DBD FLASH 279Z
GRINALTA'S POL FLASH

{ ROGANT
GOLDL
DOUBLE BAR D LINCOLN
MRLN JOCELINE
ANTONIUS
SH RUTH F52R
GRINALTA'S POL SUPREMACY
GRINALTA'S ERMA 610E

BW
95 lbs.

CE	BW	VW	YW	MILK	MCE	MWWT
2.6	5.2	66.5	99.0	30.4	6.3	63.7

12

DOUBLE BAR D *Helga* 27E

FLECKVIEH HORNED RLD 27E 1206823 JAN. 24, 2017

MRLN ROGAR
DOUBLE BAR D RIVAL 201A
DOUBLE BAR D JOCELINE

DOUBLE BAR D THUNDER 273X
DOUBLE BAR D HELGA 253A
MFI HELGA 6218

{ ROGANT
GOLDL
DOUBLE BAR D LINCOLN
MRLN JOCELINE
PRL PORTERHOUSE REGENT
MFI SHAMU 3137
MFI WHISTLER 47L
ANCHOR "T" YUTTE 28G

BW
105 lbs.

CE	BW	VW	YW	MILK	MCE	MWWT
1.7	7.4	70.3	101.2	29.3	2.8	64.5

Moderately and big barrelled female. Expect good udder quality coming from her Thunder dam. **AI bred to Double Bar D Blueprint 11E on April 9, 2018. Safe to April 9 breeding.**



27E



71E

Starwest Pol Batman influence is very popular here at Double Bar D. 71E combines a stylish look on a long side and a big hip. She is setting up an excellent udder.

Exposed to KWA Law Maker 59C from May 1 to June 6, 2018.

13

DOUBLE BAR D *Renata* 71E

FLECKVIEH POLLED RLD 71E P1255618 FEB. 25, 2017

DOUBLE BAR D SPITFIRE 20X
STARWEST POL BATMAN
FGAF SHEENA 843Y

MFI JEREMIAH 9022
DOUBLE BAR D RENATA 320B
DOUBLE BAR D RENATA 306Y

DOUBLE BAR D EVEREST 103U
VIRGINIA MS TREASURE 4T
ALLM COLOSSAL 25U
ANCHOR D SHEENA 138S
GIBBONS JEREMIAH
MFI PETRA 2093
LFS POL BALBOA 40U
MFI RENATA 7086

BW
84 lbs.

CE	BW	VW	YW	MILK	MCE	MWWT
6.5	3.9	69.2	98.3	32.4	2.3	67.0

14

DOUBLE BAR D *Trudy* 67E

FLECKVIEH POLLED RLD 67E P1254546 FEB. 21, 2017

DOUBLE BAR D SPITFIRE 20X
STARWEST POL BATMAN
FGAF SHEENA 843Y

MFI JEREMIAH 9022
DOUBLE BAR D TRUDY 330B
DOUBLE BAR D TRUDY 265Y

DOUBLE BAR D EVEREST 103U
VIRGINIA MS TREASURE 4T
ALLM COLOSSAL 25U
ANCHOR D SHEENA 138S
GIBBONS JEREMIAH
MFI PETRA 2093
JB WELLS OUTLAW 948W
DFM TRUDY 708T

BW
91 lbs.

CE	BW	VW	YW	MILK	MCE	MWWT
5.6	4.0	70.0	101.1	32.7	1.7	67.7



67E

Another excellent Batman daughter whose dam is a good easy keeping "Juggernaut" daughter. Very correct with fluidity of motion with great feet. Double goggled and setup up a great udder.

Exposed to KWA Law Maker 59C from May 15 to June 6, 2018.

A very complete, polled Ironman daughter with great neck extension. Ironman daughters are developing into excellent cows. 48E goes back to Legend and Lynnea 13S. (Everest's full sibling)
AI bred to Double Bar D Blueprint 11E on April 11, 2018. Safe to April 11 breeding.



48E

15

DOUBLE BAR D *Lynnea* 48E

FLECKVIEH POLLED RLD 48E P1206838 FEB. 1, 2017

IPU ROMANO 90X
SBSF IRONMAN 29B
 WXR MS PASO 26P

ANCHOR "T" LEGEND 7H
DOUBLE BAR D LYNNEA 692X
 DOUBLE BAR D LYNNEA 13S

{ CHAMPS ROMANO
 IPU MS LEGEND 42P
 CEN LAREDO 519L
 PILLAR BAMBI 6L
 ANCHOR "T" METRO 4E
 ANCHOR "T" HELGA 10Y
 EMIL
 DOUBLE BAR D LYNN 89M

BW
 82 lbs.

CE	BW	VW	YW	MILK	MCE	MWWT
9.5	3.2	69.1	99.9	33.7	5.6	68.3

16

DOUBLE BAR D *Zador* 20E

FLECKVIEH HORNED RLD 20E 1206815 JAN. 21, 2017

WLSF HALDOR
WLSF SADOR
 SALMON ARM SARABELLE 9S

WLSF HALDOR
WLSF ZADOR
 WLSF MANZA 2ND

{ SALMON ARM HAYES 9M
 WLSF VERDORA
 SALMON ARM SAMSON 113P
 SALMON ARM HANNABELLE 34P

{ SALMON ARM HAYES 9M
 WLSF VERDORA
 WLSF ABRAHAM
 SALMON ARM MANZA 7L

BW
 85 lbs.

CE	BW	VW	YW	MILK	MCE	MWWT
9.5	2.9	57.9	87.3	25.8	4.0	54.8

Full South African genetics. 20E is thick and deep made but still maintains femininity throughout.
AI bred to Double Bar D Blueprint 11E on April 14, 2018. Safe to April 14 breeding.



20E



56E

17

DOUBLE BAR D Jojo 56E

FLECKVIEH HORNED RLD 56E 1206843 FEB. 9, 2017

IPU ROMANO 90X
SBSF IRONMAN 29B
WXR MS PASO 26P

DOUBLE BAR D CHESAPEAKE
DOUBLE BAR D JO 21B
DOUBLE BAR D JO 505U

CHAMPS ROMANO
IPU MS LEGEND 42P
CEN LAREDO 519L
PILLAR BAMBI 6L
SHAWACRES JAHARI 50L
MFI HELGA 4021
DOUBLE BARD MAKE M PLLED
MRLN JOSCELINE

BW
88 lbs.

Long spined and smooth made Ironman daughter.
Exposed to Starwest Pol Batman from May 1 to May 30, 2018.

CE	BW	VW	YW	MILK	MCE	MWWT
4.9	5.8	75.9	109.2	29.5	3.2	67.5



Double Bar D Staff And Dimler Farm Family

Josie 40F is the full and complete package. Attractive and big ribbed. Her dam 288B was high selling Fleck in our 2016 Share the Herd sale going to George Larre but we were very fortunate enough to retain a share of her influence here at Double Bar D. You won't miss her sale day!



Double Bar D Josie 288B



40F

18

DOUBLE BAR D *Josie* 40F

FULL BLOOD HORNED RLD 40F 1254269 JAN. 23, 2018

ANCHOR "T" RUSTY 59G
STARWEST POL BLUEPRINT
PHS HOMOZYGOUS XCEPTIONAL

MFI JEREMIAH 9022
DOUBLE BAR D JOSIE 288B
DOUBLE BAR D JOSIE 648X

KLONDIKE GOLD RUSH 418B
ANCHOR "T" HELGA 10Y
CHAMPS BRAVO
WCC WELLS' PLD TALULAH 7T
GIBBONS JEREMIAH
MFI PETRA 2093
GIBBY'S REAL DEAL 25T
DOUBLE BAR D JOCELINE

BW
87 lbs.

CE	BW	VW	YW	MILK	MCE	MWWT
9.1	4.3	71.7	104.9	34.6	3.2	70.4

19

DOUBLE BAR D *Fiesta* 06F

FULL BLOOD HORNED RLD 06F 1247430 JAN. 10, 2018

DOUBLE BAR D RIVAL 201A
DOUBLE BAR D RIVAL 28D
DOUBLE BAR D LYNN 6Y

MFI JEREMIAH 9022
DOUBLE BAR D FIESTA 207A
PROSTOCK FIESTA 9021W

MRLN ROGAR
DOUBLE BAR D JOCELINE
DOUBLE BAR D EXODUS 104U
DOUBLE BAR D LYNN 184W
GIBBONS JEREMIAH
MFI PETRA 2093
JB CDN POMPEII 7009
DOUBLE BAR D FLASHY 172R

BW
89 lbs.

CE	BW	VW	YW	MILK	MCE	MWWT
3.6	5.3	67.2	96.7	31.7	0.9	65.3

Another fancy and big ribbed heifer calf whose dam is another big producing Juggernaut daughter.



Juggernaut



06F



20

RUBYS *Turnpike* 771E

Sire: WBF SIGNIFICANT B132 *Dam:* RUBYS MISS CLEO 240Z

CE: 9.9 BW: 3.0 WW: 84.2 YW: 132.6 Milk: 20.9 MCE: 5.7 MWWT: 62.9

*T*urnpike was the most talked about bull at the 2018 National Western and if you saw him stomping the dirt in the Pepsi Centre, it was easy to understand why. A rare blend of power and mass with undeniable presence. He is big footed and has excellent testicles. Equally intriguing is Turnpike's unique and outcross pedigree and well above average EPD spread. We partnered with Werning Cattle Co. to purchase Turnpike as the high selling lot in Ruby's bull sale. The reports from those who saw him in South Dakota were exceptionally positive. We believe Turnpike is destined for a bright future; December 5 is your opportunity to be a part of it. **7/8 Simmental.**

OWNED WITH WERNING CATTLE COMPANY AND RUBY'S CATTLE COMPANY.

100 UNITS OF SEMEN SELLING



W/C *Bankroll* 811D

*B*ankroll in person will stop you in your tracks. Muscular, athletic, well built, excellent feet with a look and presence that is second to none. His rookie calf crop has exceeded extremely high expectations. Low birth weight, high growth and sound. The sons are powerful and rugged yet the females are angular and have an exceptional maternal look. He has already amassed an impressive list of high sellers and winners and he is just getting warmed up.

NO SEMEN ON BANKROLL IS FOR SALE IN CANADA AT THIS TIME SO IF YOU WANT TO GET IN ON HIS GENETICS AND SERVICE THIS IS YOUR CHANCE!



W/C RJ 6110D
Full Sister to Bankroll



RLD 536F - Bankroll Daughter
National Heifer Calf Champion
Owned with Dusty Rose



Bankroll Daughter
\$164,000 High Seller for RJ



RLD 564F
Bankroll × American Pride



RLD 449F
Bankroll × Captain Morgan



RLD 635F
Bankroll × American Pride



477F

The first Bankroll to sell at auction in Canada and an excellent representation of why we are so excited about this sire group. Big hip, plenty of muscle, bold in her rib and center body, yet transitions nicely into her shoulder and neck. You would be hard pressed to find fault in this heifer's foot and leg structure. We do feel that this female's pedigree and design set her apart as one of the big time cow prospects we have ever offered for sale.

Terms to be announced.



Double Bar D Bette 417A

21

DOUBLE BAR D *Bette* 477F

PURE BRED POLLED RLD 477F BPG1249224 JAN. 24, 2018

W/C LOADED UP 1119Y
W/C BANKROLL 811D
MISS WERNING KP 8543U

DOUBLE BAR D TRUE GRIT
DOUBLE BAR D BETTE 417A
DOUBLE BAR D BETTE 190W

REMINGTON LOCK N LOAD 54U
AUBREYS BLACK BLAZE III
WAGR DREAM CATCHER 03R
MISS WERNING 534R
TNT TANKER U263
WHEATLAND LADY 822U
CG REWARD 88R
DOUBLE BAR D RED BETTE

BW
78 lbs.

CE	BW	VW	YW	MILK	MCE	MWWT
12.4	0.8	62.2	90.0	25.9	5.4	57.0

22

DOUBLE BAR D *Suse* 438F

PURE BRED POLLED RLD 438F BPG1248235 JAN. 18, 2018

W/C LOADED UP 1119Y
W/C BANKROLL 811D
MISS WERNING KP 8543U

WHEATLAND CIRCUIT BREAKER
DOUBLE BAR D SUSE 402D
WLE CRUISIN SUSAN T26

REMINGTON LOCK N LOAD 54U
AUBREYS BLACK BLAZE III
WAGR DREAM CATCHER 03R
MISS WERNING 534R

WHEATLAND HIGHVOLTAGE122Y
WHEATLAND LADY 81X
CNS DREAM ON L186
MISS CHLOE RF26K

BW
78 lbs.

CE	BW	VW	YW	MILK	MCE	MWWT
12.4	0.8	62.2	90.0	25.9	5.4	57.0



438F

Right from the ground up, this is one cool girl. Extra flex to her pastern, cool leg, deep flanked, with the right kind of shape to her rib cage. She is as correct and balanced as any female we have this year. We feel this heifer as all the parts to make an excellent show heifer this spring and through next fall. Her Circuit Breaker mother is one of the best two year olds we calved this spring, and is a direct daughter of the great T26. 438F is puppy dog gentle and has exceptional hair. If you are looking for a maternally orientated female, we feel 438F is an ideal choice.



Double Bar D Suse 402D

• **Homozygous Polled Homozygous Black**

The 101X cow is one of the most consistent producers here. This easy doing Dagger daughter is an excellent example of that. Long sided, long fronted with plenty of power. Galaxy's maternal Law Maker brother was high selling bull to Erixon Simmentals and W2 Simmentals, in Best of Both Worlds 2018 Bull Sale.



VCL LKC Dagger 605D



Double Bar D Galaxy 101X



502F

23

DOUBLE BAR D *Galaxy* 502F

PURE BRED POLLED RLD 502F BPG1249223 JAN. 28, 2018

PROFIT
VCL LKC DAGGER 605D
BF MISS CRYSTEEL TANGO

ACS BLACK JACK 758T
DOUBLE BAR D GALAXY 101X
WINDMILL MS GALAXY 161U

WS PILGRIM H182U
WAGR PANARAMA 204Z
SVF STEEL FORCE S701
LLSF TANGO T194
WHEATLAND RED TEDDY 457P
WGAJ JONESY'S NEON 24N
IPU RED GALAXY 110R
RED PEPPERETTE

BW
84 lbs.

CE	BW	VW	YW	MILK	MCE	MWWT
7.1	2.5	58.5	84.3	18.1	2.9	47.4

24

DOUBLE BAR D *Pepsi* 436E

PURE BRED POLLED RLD 436E BPTG1206699 JAN. 16, 2017

CDI AUTHORITY 77X
KWA LAW MAKER 59C
KWA MS ROCK 14X

REMINGTON LOCK N LOAD 54U
SWAN LAKE PEPSI 97A
MRL MISS 390X

NF TRUMP S582
CDI MS CROCKET 88T
KWA RED ROCK 5T
KWA MS BARON 9U
REMINGTON ON TARGET 2S
BAR 15 MISS KNIGHT78E-51G
TNT POWER SURGE T404
MRL MISS 332T

BW
88 lbs.

CE	BW	VW	YW	MILK	MCE	MWWT
5.8	2.1	69.5	107.7	24.0	2.4	58.8

• **Homozygous Polled Heterozygous Black**

Big opportunity! Another outstanding Lawmaker x Pepsi 97A combination. It's hard not to look at this one and think "power cow." High volume, good looking, and sound. We believe this will be one of the feature breds to sell this fall. Full sister was high selling open in Sharing the Herd 2017 Sale, to Ashworth Farm and Ranch.

AI bred to W/C Bankroll 811D on April 11, 2018. Safe to April 11 breeding.



Swan Lake Pepsi 97A



436E



429E

We love how pulled apart and extended this cherry red heifer is. She ties all that length into a big square hip and some well above average running gear. Note the teat placement and spread on this one's udder.

AI bred to W/C Bankroll 811D on April 14, 2018. Safe to April 14 breeding.



KWA Law Maker 59C

25

DOUBLE BAR D Sonya 429E

PURE BRED POLLED RLD 429E PG1254267 JAN. 15, 2017

CDI AUTHORITY 77X
KWA LAW MAKER 59C
KWA MS ROCK 14X

LAZY S RED 236P
DOUBLE BAR D SONYA 526U
SGCC RED CLASSY 20N

{ NF TRUMP S582
CDI MS CROCKET 88T
KWA RED ROCK 5T
KWA MS BARON 9U

{ LAZY S RED SHOCKER 226L
MS LAZY S RED P 87H
LRS RED REALITY 33J
SGCC CLASSY 25E

BW
86 lbs.

CE	BW	VW	YW	MILK	MCE	MWWT
9.0	2.9	76.0	115.1	20.8	3.0	58.8

26

DOUBLE BAR D Amy 411E

PURE BRED POLLED RLD 411E PG1206677 JAN. 8, 2017

CDI AUTHORITY 77X
KWA LAW MAKER 59C
KWA MS ROCK 14X

JUSTABOUT KING LABEL
DOUBLE BAR D AMY 584B
DOUBLE BAR D AMY 701Y

{ NF TRUMP S582
CDI MS CROCKET 88T
KWA RED ROCK 5T
KWA MS BARON 9U

{ RC CLUB KING 040R
JUSTABOUT LABEL ME
SPRINGCREEK TEDDY 72U
DOUBLE BAR D LIANE 15M

BW
80 lbs.

CE	BW	VW	YW	MILK	MCE	MWWT
6.3	3.2	72.0	106.8	24.5	3.3	60.5



411E

Complete, well balanced and fault free. The consistency in these Law Makers is impressive. Her King Label x Teddy mother does a good job year in and year out.

AI bred to W/C Bankroll 811D on April 13, 2018. Safe to April 13 breeding.

• **Homozygous Polled**

If you like angular, smooth made, maternal cattle you will like these Law Makers a lot. This one goes back to the great Smarty Pants genetics on the bottom side.

AI bred to W/C Bankroll 811D on April 19, 2018. Safe to April 19 breeding.



430E

27

DOUBLE BAR D *Smarty Pants* 430E

PURE BRED POLLED RLD 430E PTG1206691 JAN. 15, 2017

CDI AUTHORITY 77X
KWA LAW MAKER 59C
KWA MS ROCK 14X

LFE RED CASINO 3036X
MRL MISS SMARTY PANTS III
TRIPLE C SMARTY PANTS R

{ NF TRUMP S582
CDI MS CROCKET 88T
KWA RED ROCK 5T
KWA MS BARON 9U

{ LFE BS LEWIS 322U
LFE DREAM LADY 112P
TRIPLE C EL PODEROSO REY
GFI GRAMMS DELIGHT L17

BW
95 lbs.

CE	BW	VW	YW	MILK	MCE	MWWT
9.4	2.5	69.2	104.9	17.0	5.6	51.6

28

DOUBLE BAR D *Park* 496E

PURE BRED POLLED RLD 496E PG1206780 FEB. 18, 2017

CDI AUTHORITY 77X
KWA LAW MAKER 59C
KWA MS ROCK 14X

SVS CAPTAIN MORGAN 11Z
DOUBLE BAR D PARK 720B
DOUBLE BAR D PARK 8U

{ NF TRUMP S582
CDI MS CROCKET 88T
KWA RED ROCK 5T
KWA MS BARON 9U

{ HARVIE JDF WALLBANGER111X
SUNNYVALLEY BLK JENNA 88U
KS BRAVADO P68
MISS PARKHILL 30S

BW
88 lbs.

CE	BW	VW	YW	MILK	MCE	MWWT
8.0	3.9	78.0	119.0	26.6	5.4	65.6

I know we are getting repetitive but these Law Makers are all cut from the same cloth. Cowy, sound, complete. Mating these things to Bankroll was a no brainer. The red baldy deal is as hot as anything out there, some real good opportunities to get yourself one here. **Exposed to W/C Bankroll 811D from April 25 to May 20, 2018.**



496E



421E

As much middle and power as any in a moderate package. These Circuit Breakers really shine when they enter production. The shot of the Caliente donor on the bottom side will only enhance the maternal value of this sale feature.

Exposed to KWA Law Maker 59C from May 1 to May 30, 2018.

29

DOUBLE BAR D *Cali* 421E

PURE BRED POLLED RLD 421E PG1206686 JAN. 4, 2017

WHEATLAND HIGHVOLTAGE122Y
WHEATLAND CIRCUIT BREAKER
WHEATLAND LADY 81X

DOUBLE BAR D BAXTER 606Z
DOUBLE BAR D CALI 564B
KENCO CALIENTE 45AT

WHEATLAND PREDATOR 922W
WHEATLAND LADY 736 T
STF DOMINANCE T171
WHEATLAND LADY 902J

LFS POL BALBOA 40U
MFI PETRA 4077
JDJ CHARISMA 20P
GCF MISS CALIENTE

BW
78 lbs.

CE	BW	VW	YW	MILK	MCE	MWWT
10.1	2.1	60.2	82.9	21.5	6.2	51.6

30

DOUBLE BAR D *Cali*

PURE BRED POLLED RLD 434E PG1206712 JAN. 16, 2017

WHEATLAND HIGHVOLTAGE122Y
WHEATLAND CIRCUIT BREAKER
WHEATLAND LADY 81X

SVS CAPTAIN MORGAN 11Z
DOUBLE BAR D CALIENTE 441
KENCO CALIENTE 45AT

WHEATLAND PREDATOR 922W
WHEATLAND LADY 736 T
STF DOMINANCE T171
WHEATLAND LADY 902J

HARVIE JDF WALLBANGER111X
SUNNYVALLEY BLK JENNA 88U
JDJ CHARISMA 20P
GCF MISS CALIENTE

BW
82 lbs.

CE	BW	VW	YW	MILK	MCE	MWWT
9.8	2.3	68.8	99.2	18.8	6.0	53.2



434E

A three-quarter full sibling to the previous heifer. The consistency isn't an accident. Moderate, easy doing and functional. The early service to Bankroll will pay big dividends.

AI bred to W/C Bankroll 811D on April 3, 2018. Safe to April 3 breeding.

This heifer reminds us a lot of the Big Red we showed last fall that Ferme Gagnon later selected out of the sale. Soft bellied, good legged, with an attractive look. We are excited to see these first Big Reds calve out this spring. **AI bred to KWA Law Maker 59C on May 7, 2018. Safe to May 7 breeding.**



501E

31

DOUBLE BAR D Abby 501E

PURE BRED POLLED RLD 501E PG1206785 FEB. 24, 2017

KWA FLYF RED MOUNTAIN 16Z
SWAN LAKE BIG RED 85 B
SWAN LAKE LILI 115Z

JF AMERICAN PRIDE 0987X
DOUBLE BAR D ABBY 613B
DOUBLE BAR D BLK ABBY 11S

IPU RED WESTERN 49X
KWA MS ROCK 14X
LFE BLACK LAKOTA 385W
DOUBLE BAR D LILI 62R
MR NLC UPGRADE U8676
WLE CRUISIN SUSAN T26
BDS PREMIUM 412P
DOUBLE BAR D BLK ABBEY 8N

BW
87 lbs.

CE	BW	VW	YW	MILK	MCE	MWWT
5.9	4.0	66.2	101.4	22.3	3.6	55.4

32

DOUBLE BAR D Jewel 470E

PURE BRED POLLED RLD 470E BPTG1206755 FEB. 4, 2017

HARVIE JDF WALLBANGER111X
SVS CAPTAIN MORGAN 11Z
SUNNYVALLEY BLK JENNA 88U

BMR EXPLORER
SS/PRS JEWEL Y9S1
EKHCC RED JEWEL 760

SHS ENTICER P1B
JDF PEPSI 61U
RLA REDSTREAM 152S
WLB 32H JENNA 360R
WESTFALL VOYAGER 721P
WW MISS MY DREAM 429R
SVF/NJC BUILT RIGHT N48
EKHCC CROWN JEWEL 523

BW
83 lbs.

CE	BW	VW	YW	MILK	MCE	MWWT
5.9	2.7	70.3	103.5	17.6	3.4	52.8

Really nice one here. Powerful build, big centered and backed by a tremendous cow family. Bred early and bred right, the return on this one could be big time!

AI bred to W/C Bankroll 811D on April 2, 2018. Safe to April 2 breeding.



470E



498E

33

DOUBLE BAR D *Desiree* 498E

PURE BRED POLLED RLD 498E BPTG1206782 FEB. 18, 2017

HARVIE JDF WALLBANGER111X
SVS CAPTAIN MORGAN 11Z
SUNNYVALLEY BLK JENNA 88U

TNT TANKER U263
DOUBLE BAR D LADY DESIREE
WHEATLAND LADY 822U

SHS ENTICER P1B
JDF PEPSI 61U
RLA REDSTREAM 152S
WLB 32H JENNA 360R
MR NLC SUPERIOR S6018
TNT MISS S17
WHEATLAND BULL 680S
WHEATLAND LADY 638 S

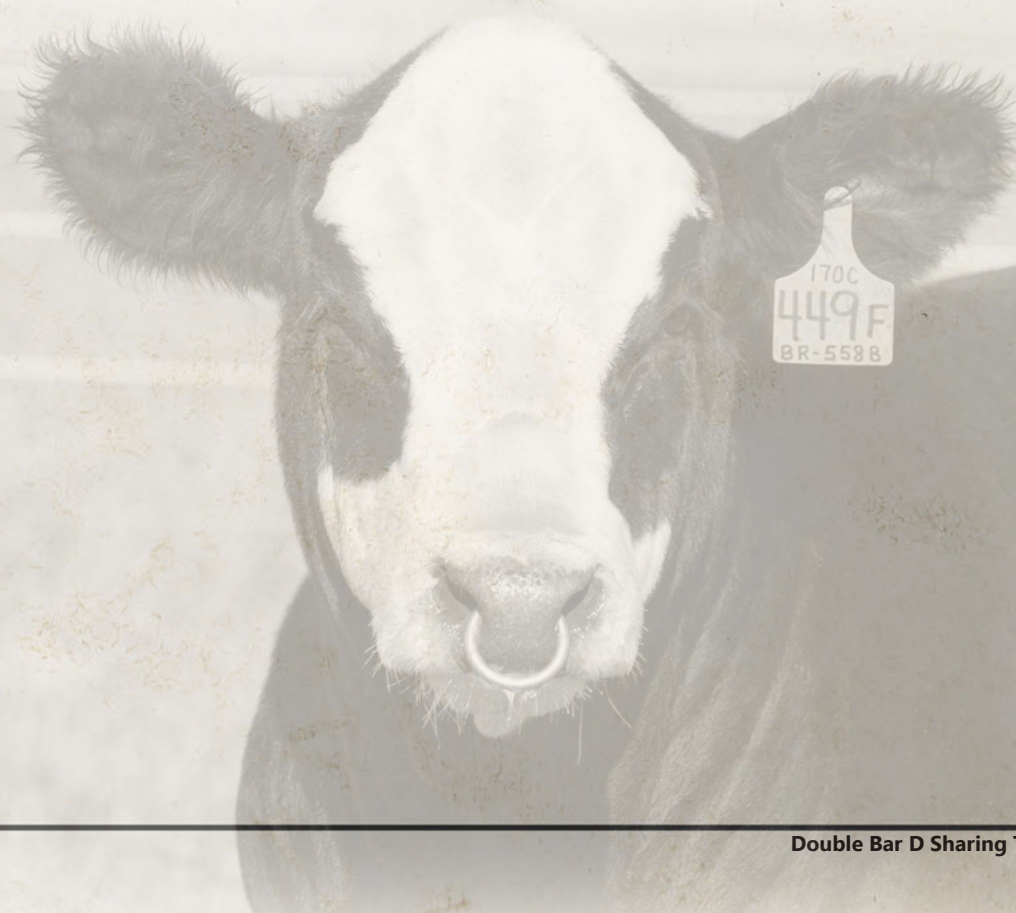
BW
90 lbs.

• Homozygous Polled

We like this one pretty well. Even showed her a bit last fall. Just a shot more extension up front than a typical Morgan. Tracing back to Wheatland Lady 822U, she will have all the cow power you expect.

AI bred to KWA Law Maker 59C on May 1, 2018. Safe to May 1 breeding.

CE	BW	WW	YW	MILK	MCE	MWWT
9.0	3.1	77.2	119.2	24.2	5.9	62.8



FULL SIBLINGS

Exposed to KWA Law Maker 59C from May 1 to May 30, 2018



410E

34

DOUBLE BAR D *Finesse* 410E

PURE BRED POLLED RLD 410E BPTG1206676 JAN. 8, 2017

HARVIE JDF WALLBANGER111X
SVS CAPTAIN MORGAN 11Z
SUNNYVALLEY BLK JENNA 88U

WHEATLAND RED HUMMER 608S
DOUBLE BAR D FINESSE 401W
MUIRHEAD'S FINE TUNE 53R

{ SHS ENTICER P1B
JDF PEPSI 61U
RLA REDSTREAM 152S
WLB 32H JENNA 360R
WHEATLAND BULL 468P
WHEATLAND LADY 443P
KR-SRF KENWORTH 1M
LRS MS FINE TUNE 252M

BW
86 lbs.

CE	BW	VW	YW	MILK	MCE	MWWT
6.3	3.4	78.3	118.2	21.5	4.0	60.7

35

DOUBLE BAR D *Finesse* 493E

PURE BRED POLLED RLD 493E BPTG1206777 FEB. 17, 2017

HARVIE JDF WALLBANGER111X
SVS CAPTAIN MORGAN 11Z
SUNNYVALLEY BLK JENNA 88U

WHEATLAND RED HUMMER 608S
DOUBLE BAR D FINESSE 401W
MUIRHEAD'S FINE TUNE 53R

{ SHS ENTICER P1B
JDF PEPSI 61U
RLA REDSTREAM 152S
WLB 32H JENNA 360R
WHEATLAND BULL 468P
WHEATLAND LADY 443P
KR-SRF KENWORTH 1M
LRS MS FINE TUNE 252M

BW
78 lbs.

CE	BW	VW	YW	MILK	MCE	MWWT
6.3	3.4	78.3	118.2	21.5	4.0	60.7

One of the real solid matings at Double Bar D the last couple years. Full siblings to this pair are working all over the country. 401W is a beast of a cow. Subtle differences separate the sisters. Pick the heifer or the service you like best, you won't be disappointed either way. Full siblings are working at Ashworth Farm and Ranch and Ferme Gagnon.

AI bred to W/C Bankroll 811D on April 2, 2018. Safe to April 2 breeding.



Double Bar D Finesse 401W



493E



Big, powered up, age advanced female. This one is bred up real early to the good CM son "Defender." They should complement each other nicely.

Exposed to Defender 611C from March 6 to April 1, 2018.

729D

36

DOUBLE BAR D *Lina* 729D

PURE BRED POLLED RLD 729D BPG1227566 SEPT. 14, 2016

STF ROYAL AFFAIR Z44M
DOUBLE BAR D ROYAL 526B
SS/PRS JEWEL Y9S1

MR NLC UPGRADE U8676
DOUBLE BAR D LINER 404A
WINDMILL MS LINER 174U

REMINGTON LOCK N LOAD 54U
STF ONYX 451W
BMR EXPLORER
EKHCC RED JEWEL 760
ELLINGSON LEGACY M229
MS NLC MOJO S6119 B
SPRINGCREEK LINER 91P
WINDMILL MS RIDGEWAY 17J

BW
98 lbs.

CE	BW	VW	YW	MILK	MCE	MWWT
4.9	4.1	75.2	112.8	16.8	1.9	54.4

37

DOUBLE BAR D *Ellie Mae* 482E

PURE BRED POLLED RLD 482E BPG1206766 FEB. 9, 2017

IPU ROMANO 90X
SBSF IRONMAN 29B
WXR MS PASO 26P

KBR BLACK EXCITER 758T
IPU MS. EXCITER 102X
IPU MS RESISTOL 78U

CHAMPS ROMANO
IPU MS LEGEND 42P
CEN LAREDO 519L
PILLAR BAMBI 6L

SKORS SUPER POWER 95R
LFE BLACK LADY 58M
IPU BLACK RESISTOL 193R
MS SD 600U IRISH 17

BW
87 lbs.

CE	BW	VW	YW	MILK	MCE	MWWT
6.4	3.6	67.9	101.8	29.1	4.0	63.1



Unique pedigree on a nice individual. Ironman daughters make excellent cows. The Dagger service won't disappoint.

AI bred to VCL LKC Dagger 605D on April 19, 2018. Safe to April 19 breeding.

482E

Big, burly, extra age heifer. Fleck twist to the pedigree again. These extra age heifers calve so well.
Exposed to JL Bismarck 3013 from May 14 to June 6, 2018.



770D

38

DOUBLE BAR D *Fern* 770D

PURE BRED POLLED RLD 770D BPG1227601 OCT. 7, 2016

HART GOOD TIME W223
WLB OBSIDIAN BLACK 391Y
 WLB 462P LUCY 400W

MFI FOUNDATION 7094
DOUBLE BAR D FERN 279Y
 DOUBLE BAR D FERN 19N

{ DILLONS IN TIME
 HART LADY CONTENDER T227
 WHEATLAND BULL 462P
 WLB 366R OLIVE 365T
 ANCHOR "T" METRO 4E
 MFI PETRA 3059
 GRINALTA'S POLLED REGENT
 DOUBLE BAR D FERN 127L

BW
 95 lbs.

CE	BW	VW	YW	MILK	MCE	MWWT
5.3	4.5	67.6	98.7	26.9	2.1	60.7

39

DOUBLE BAR D *Lolita* 490E

PERCENTAGE POLLED RLD 490E BPRS1206774 FEB. 11, 2017

S A V BISMARCK 5682
JL BISMARCK 3013
 JL MAYFLOWER 1173

DOUBLE BAR D THUNDER 273X
DOUBLE BAR D LOLITA 317B
 MFI LOLITA 7034

{ G A R GRID MAKER
 S A V ABIGALE 0451
 S A V FINAL ANSWER 0035
 EASTONDALE MAYFLOWER 113'00
 PRL PORTERHOUSE REGENT
 MFI SHAMU 3137
 MFI WHISTLER 47L
 ANCHOR "T" EMMY 5B

BW
 82 lbs.

CE	BW	VW	YW	MILK	MCE	MWWT
5.6	2.6	68.3	100.4	18.8	3.1	53.0

SIMM ANGUS

We should really start keeping these SimmAngus females. All the angularity you expect from Angus with an extra shot of punch from the Fleckvieh side. These heifers turn into hard working, easy doing cows. Bred right up to some of the hottest sires in the breed.

AI bred to W/C Bankroll 811D on April 18, 2018. Safe to April 18 breeding.



490E



AI bred to W/C Bankroll 811D on April 18, 2018. Safe to April 18 breeding.

4011E

40

RLD 4011E

PERCENTAGE POLLED RLD 4011E NOT REGISTERED MAR. 13, 2018

S A V BISMARCK 5682
JL BISMARCK 3013
S A V ABIGALE 0451

{ G D A R TRAVELER 044
G A R PRECISION 2536
SCHOENES FIX IT 826
S A V ABIGALE 6062

UNREGISTERED SIMMENTAL COW

BW
68 lbs.

CE BW WW YW MILK MCE MWWT

41

RLD 4004E

PERCENTAGE POLLED RLD 4004E NOT REGISTERED FEB. 20, 2018

S A V BISMARCK 5682
JL BISMARCK 3013
S A V ABIGALE 0451

{ G D A R TRAVELER 044
G A R PRECISION 2536
SCHOENES FIX IT 826
S A V ABIGALE 6062

UNREGISTERED SIMMENTAL COW

BW
72 lbs.

CE BW WW YW MILK MCE MWWT



AI bred to W/C Bankroll 811D on April 14, 2018. Safe to April 14 breeding.

4004E

Exposed to KWA Law Maker 59C from May 15 to June 6, 2018.



4001E

42

RLD 4001E

PERCENTAGE POLLED RLD 4001E NOT REGISTERED FEB. 8, 2018

S A V BISMARCK 5682
JL BISMARCK 3013
S A V ABIGALE 0451

G D A R TRAVELER 044
G A R PRECISION 2536
SCHOENES FIX IT 826
S A V ABIGALE 6062

UNREGISTERED SIMMENTAL COW

BW
75 lbs.

CE BW WW YW MILK MCE MWWT

43

RLD 4009E

PERCENTAGE POLLED RLD 4004E NOT REGISTERED MAR. 11, 2018

S A V BISMARCK 5682
JL BISMARCK 3013
S A V ABIGALE 0451

G D A R TRAVELER 044
G A R PRECISION 2536
SCHOENES FIX IT 826
S A V ABIGALE 6062

UNREGISTERED SIMMENTAL COW

BW
75 lbs.

CE BW WW YW MILK MCE MWWT

AI bred to W/C Bankroll 811D on April 9, 2018. Safe to April 9 breeding.



4009E

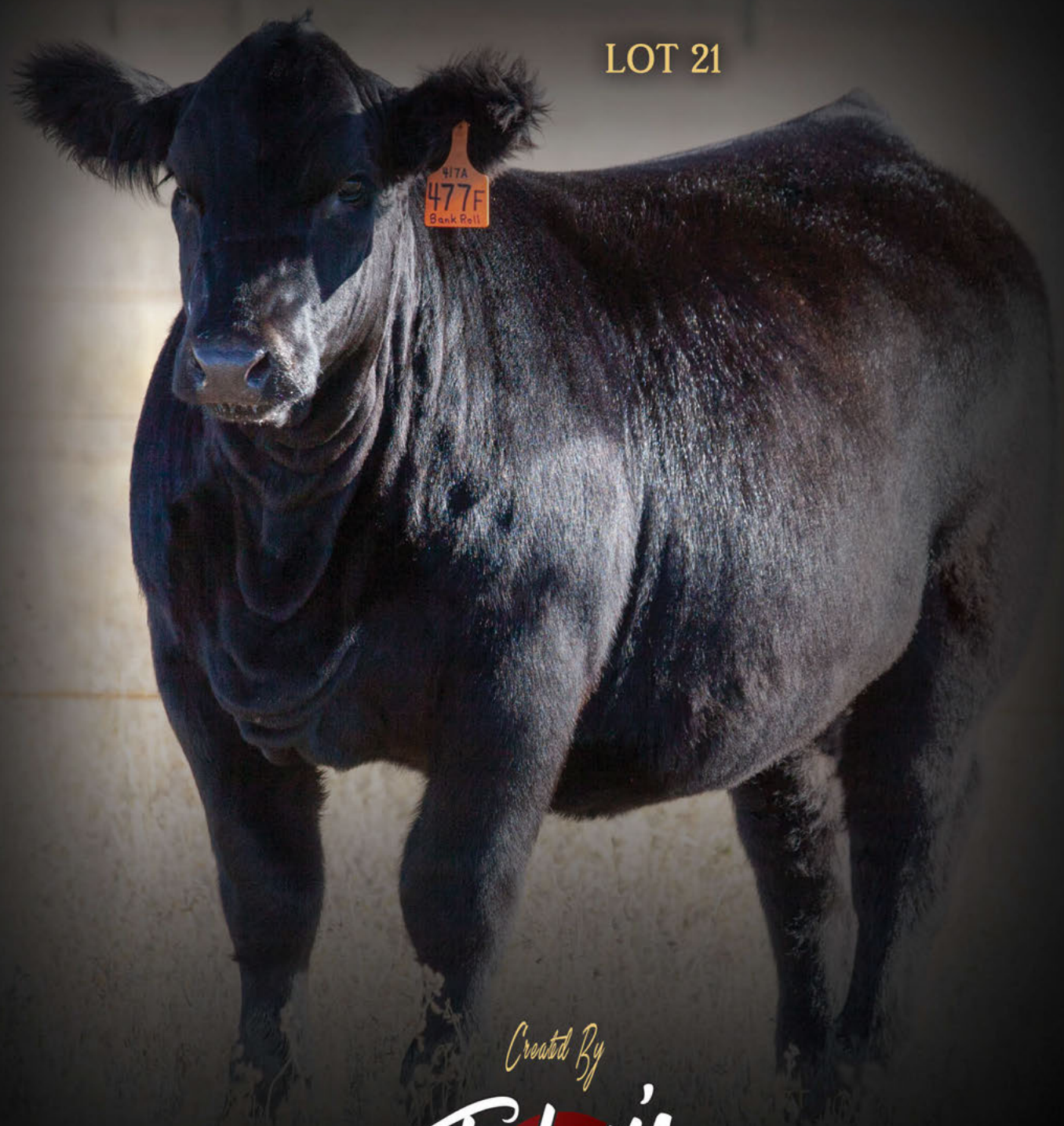


Return Undeliverable
Canadian Addresses To:

T Bar C Cattle Co. Ltd.
PO Box 2330
Warman, SK
S0K 4S0



LOT 21



Created By
Today's
Publishing