

CANADIAN WESTERN AGRIBITION
NATIONAL // // // // // // // // // //
SPECKLE PARK

SALE

NOVEMBER 27, 2019 AT 3:30 PM | REGINA, SASKATCHEWAN

From the Desk at T Bar...

Welcome to the 2019 National Speckle Park Sale. This is truly a National event, with consignors from across Canada showcasing the best of their programs. Agribition is a National showcase where we set a stage to invite the world to come and see the best that this great Nation has to offer. Canada is the birthplace of this great breed of cattle that has gained worldwide recognition. Speckle Park has been the fastest growing breed around the globe and everyone on earth will be focused in on Regina, Saskatchewan for this event.

We are extremely proud of this year's sale offering and the breeders involved. They have let us come in and select from the very top of their programs; these are the ones saved for the "National." This year marks the largest show and sale this breed has ever seen in this nation, which sends a strong message to the entire beef industry.

For the many of you who have been sitting on the sidelines watching this exciting breed grow, it's time to get off the bench and get in the game! This sale offering is powerful and exciting; whether you are looking for your first one or if you are a pioneer, we have live cattle and frozen genetics that can propel you in the right direction.

Come be a part of the largest Speckle Park show in Canadian history, the cattle are awesome, the people are even better! The energy in the barns at Agribition is intoxicating and you will gain a wealth of information about the breed and breeders of this exciting breed of beef cattle. If you are unable to join us, feel free to contact any member of the T Bar C team and we will be happy to assist you in any way we can.

See you in Regina,

Chris Poley



CHRIS POLEY
306-220-5006



SHANE MICHELSON
403-363-9973



BEN WRIGHT
519-374-3335



Sale Management

T Bar C Cattle Co. Ltd.

Box 2330, Warman, SK S0K 4S0

Office: 306-933-4200 • Fax: 306-934-0744

info@tbarc.com • www.tbarc.com



2019 Canadian Western Agribition National Speckle Park Sale...

Sale Staff...

Chris Poley, Auctioneer	306-220-5006
Shane Michelson	403-363-9973
Ben Wright	519-374-3335
Mark Stock	403-357-8104

Canadian Speckle Park Association...

57 Garden Crescent, Paris, ON N3L 3V6
Ph: 519-500-8930
Email: info@canadianspecklepark.ca
www.canadianspecklepark.ca

Schedule of Events...

TUESDAY, NOVEMBER 26

11:00 am First Lady Classic & Futurity
12:00 pm President's Classic

WEDNESDAY, NOVEMBER 27

8:30am Speckle Park Show
Chevrolet GMC Arena

3:30 pm Speckle Park Sale
John Deere Sale Arena

FRIDAY, NOVEMBER 29

5:00 pm Prospect Steer & Heifer Show

SATURDAY, NOVEMBER 24

9:00 am BMO Canadian Junior Beef Extreme
1:30 pm Prospect Steer & Heifer Sale
4:00 pm RBC Beef Supreme Challenge



**DONATION
LOT**

GIA

DL

KFC **GIA** 02G

FEMALE [CAN]10021-PB
BW: 78 LBS. WW: 651 LBS.

KFC 02G MAR 15, 2019
WADG: 2.79 LBS. PUREBRED

[SIRE] NOTTA 101Y BARCODE 113B
WRANGLER MATADOR 104D
WRANGLER MS UMA 104B

[DAM] CODIAK OH MY GOSH GNK 60A
RIVER HILL 60A DANDILION 2D
RIVER HILL 64R DANDY 2U

SIX STAR 82U ROYAL FLESH 101Y
SPOTS 'N SPROUTS 3R
RLE SUNRISE SHOWME LACERTA 68Z
UMA OF P.A.R. 4Z

CLEAR VIEW TY 205R
CODIAK UNIQUE GNK 8R
NOTTA ROMEO 64R
PRAIRIE HILL DANDY 2E

///////////////// **CONSIGNED BY: KFC FARMS LTD.**

It's an honour to donate to such a great cause as our youth. As the Speckle Park industry continues to grow, we need to ensure that our youth are given every opportunity to grow with our breed. KFC 02G was our second heaviest weight per day of age heifer calf this year. This is an opportunity, not just for the kids. Whoever wins this heifer will be getting a very strong addition to their herd. So please buy a ticket and support our youth. Thank you from KFC Farms Ltd.

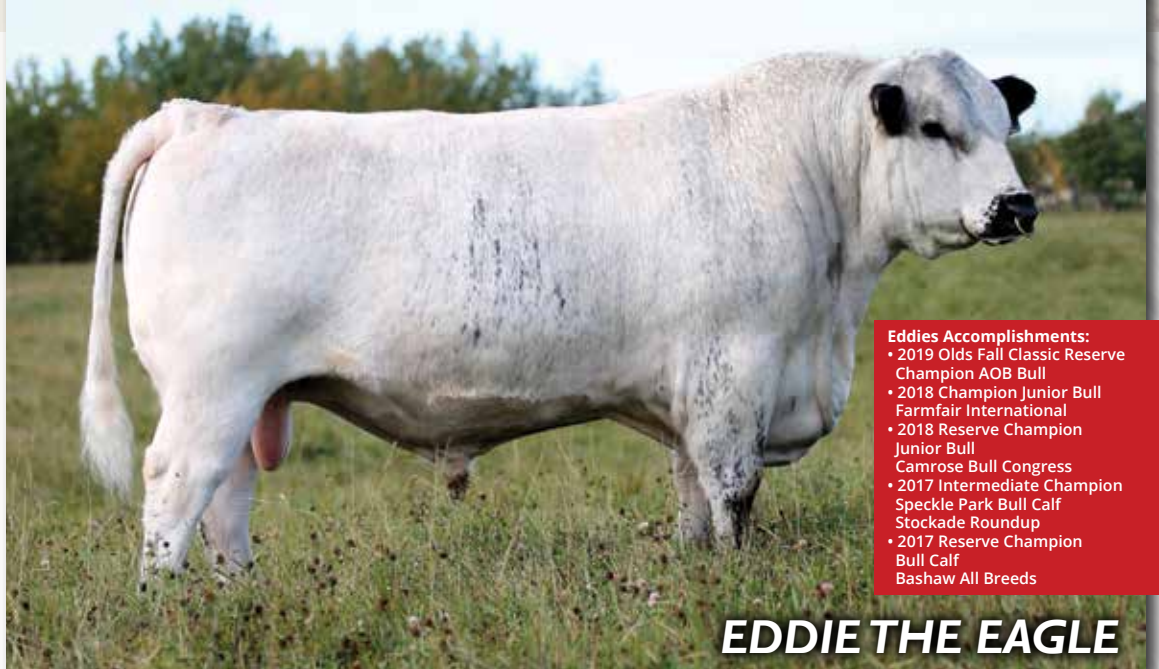


TDC OIE - 2018 Fairplay

TDC OIE - 2018 Bull Congress

2019 Steer calf of TDC OIE

KM OIA, Dam



Eddie's Accomplishments:

- 2019 Olds Fall Classic Reserve Champion AOB Bull
- 2018 Champion Junior Bull Farmfair International
- 2018 Reserve Champion Junior Bull Camrose Bull Congress
- 2017 Intermediate Champion Speckle Park Bull Calf Stockade Roundup
- 2017 Reserve Champion Bull Calf Bashaw All Breeds

EDDIE THE EAGLE

101

MT BAR EDDIE THE EAGLE 01E

MALE [CAN]7325-PB TDC 01E FEB 21, 2017
BW: 85 LBS. 205 WT: 700 LBS. PUREBRED

SIRE RIVER HILL 26T WALKER 60W
RIVER HILL 60W LINE DRIVE 54Z
NOTTA PHO-FINISH 54P

DAM HEARTRIDGE ARIES 01W
BATTLE RIVER AVERY 01A
PONDEROSA XEROX 20X

RIVER HILL TRAFFIC JAM 26T
RIVER HILL SHOW ME OFF 60S
STAR BANK LACERTA 68L
STAR BANK LEONID NIGHT 54L

P.A.R. SHARP SHOOTER 60S
PONDEROSA TIFFANY 06T
CLEAR VIEW TY 205R
CODIAK KARLA RKW 60L

CONSIGNED BY: MT BAR RANCH

Help your herd soar to new heights!

MT Bar Eddie The Eagle 01E has been turning heads and stealing hearts since February 2017. A full package; more than just a herd sire that combines power, performance and pattern with exemplary breed character.

Eddie has already sired two impressive calf crops of stylish heifers, quality steers and promising bulls. We've had luck crossing Eddie with a variety of females from purebred Speckles to club-calf influenced cows and even commercial Lowline heifers.

Every pairing has left us in awe and we have yet to meet an Eddie calf that does not fly above our expectations. Moderate, vigorous and easy fleshing calves with exceptional eye-appeal are Eddie's specialty. Don't look down, take a chance on the underdog and jump at this opportunity to become a part of Eddie The Eagle's legacy. Eddie is out of Tell Calvert's first Speckle Cow purchased when he was 14 years old. He is extremely excited by this offering and looking forward to the future of the Speckle Park breed.

Homo Polled, Homo Black, Myostatin Carrier

SPECIAL NOTE:

10% of Eddie's sale price will be donated to fund the Speckle Park classes at Summer Synergy in Olds, Alberta, helping to promote youth involvement with Speckle Park and Summer Synergy.

Semen has been drawn on Eddie and is in storage at Alta Genetics. (Australia/US/Canada).

The sale includes 50% semen rights on that semen and future rights as well.



GAME ON

102

KFC **GAME ON** 8G

MALE [CAN]9864-PB
BW: 89 LBS. WW: 685 LBS.

KFC 8G FEB 11, 2019
WADG: 2.91 LBS. PUREBRED

SIRE SIX STAR 82U ROYAL FLESH 101Y
NOTTA 101Y BARCODE 113B
SPOTS 'N SPROUTS 3R

DAM P.A.R. XCALABAR 6X
ANGEL OF P.A.R. 8Z
ANGEL OF P.A.R. 8U

STAR BANK KING GEORGE 82U
STAR BANK 53R
STAR BANK LACERTA 68L
SPOTS'N SPROUTS 5J

P.A.R. TOUCH DOWN 600T
MONALISA OF P.A.R. 6M
ASPEN ACRES T.N.T. 4Y
ANGEL OF P.A.R. 2K

//////////////////// **CONSIGNED BY: KFC FARMS LTD.**

Every cattleman needs to have his head in the game when looking for his next herd sire. KFC Game On 8G has been designed for greatness. Smooth made, impressive feet and legs. Both style and presence of a super star! His maternal brother is none other than the reigning Agribition Grand Champion Bull, Wrangler Mr. Perfect 8D, owned by River Hill and Codiak Acres. Another brother, Wrangler Western Express 8E, placed well and was shown at Agribition in 2017. It's no mistake when a cow can produce her calf, year after year, good enough to be showcased at Agribition...the stats don't lie. So Game On!

Myostatin 1 copy NT 821, Homo Polled, Homo Black



103 SECOND CHANCE **GRAND SLAM** 08G
 MALE [CAN]9912-PB SCSP 08G FEB 10, 2019
 BW: 85 LBS. PUREBRED

SIRE
 CODIAK OH MY GOSH GNK 60A
RIVER HILL 60A DIGNITARY 66D
 RIVER HILL 13U SHOW GIRL 60B

DAM
 SPOTS 'N SPROUTS UNO 102U
SECOND CHANCE YAHOO 8Y
 TALISA OF SARA LEE 8T

CLEAR VIEW TY 205R
 CODIAK UNIQUE GNK 8R
 CODIAK CRIKEY GNK 13U
 RIVER HILL SHOW ME OFF 60S

STYALS LIGHTNING LADD 14P
 TWIN RIVER 5R
 STAR BANK LACERTA 68L
 LAKEVIEW ANASTASIA 4K

////////// CONSIGNED BY: SECOND CHANCE SPECKLE PARK

I can't say enough about this young fella. I feel he will go on to do great things. Deep, wide, clean fronted, easy moving and a real joy to work with! 27 cm measurement at six months of age.
 Myostatin Carrier, Homo Black, Homo Polled



EXCLUSIVE



PGE 61F - Service Sire



RAC 61P - Dam



LS 37G - Son

104

CALICO CREEK EXCLUSIVE 11E

FEMALE [CAN]7560-PB
BW: 91 LBS.

LS 11E

MAR 16, 2017
PUREBRED

SIRE
CODIAK OSCAR GNK 8S
CODIAK PUTNAM GNK 61Y
NORTHERN LIGHTS 14N

DAM
P.A.R. KING PIN 1K
PETULA OF P.A.R. 61P
LUCKY STRIKE OF P.A.R. 6K

CODIAK PHLEP GNK 3P
CODIAK MATEUSA RKW 63M
FLATLAKE BUZZ 60K
CODIAK KLIPSO RKW 31K

P.A.R. FREEDOM II 54H
PRIDE OF P.A.R. 1G
P.A.R. LITTLE EDDIE II 93E
LUCKY RUTH OF P.A.R. 6F

////////// **CONSIGNED BY: CALICO CREEK SPECKLE PARKS**

Calico Creek is exceptionally proud to be offering this high calibre female. Exclusive is the result of an outstanding flush, crossing the great Codiak Putnam bull over Petula of P.A.R. Petula is the heartbeat of the Calico Creek herd and I promised myself I wouldn't be letting anymore of her daughters go, yet here we are with, what very well may be, her best yet. Following in her dam and sire's footsteps, Exclusive has tremendous potential and will be a great asset to any herd, as well as the breed. She has a nearly perfect udder and has done a great job on her first calf, having raised a very exciting bull prospect. Bred to Belmorals Yager 61F, she could be carrying your next superstar. Seller would be more than happy to take Exclusive home and work with buyer in case of an international purchase.

Pasture exposed to Belmoral's Yager 61F from April 15 to June 17, 2019. Observed bred on May 23. Preg check correlates with service date for a March 1, 2020 calving date. Retaining the right to one flush.

Homo Polled, Hetero Black, Myostatin Non Carrier



JKH 11B - 2018 CWA Pick of the Herd
Purchased by Codiak Acres
Ardressan, AB



105

PICK OF THE HERD

//////////////////// CONSIGNED BY: SPOTS 'N SPROUTS SPECKLE PARK

We began raising Speckle Park in 1980 when Bill Lamont, founder of the breed, brought us 15 cows to winter. Today we have about 125 breeding females, most of which are purebreds. We will sell "Pick of the Herd", your choice of any female in our herd with the choice being made by December 31, 2019.

We have been fortunate to be able to share our genetics with herds across the country as well as internationally. We are the last of the original eight founding members of the Canadian Speckle Park Association still actively breeding Speckle Park. Now, with the recent addition of our son and family to our farming operation, we plan to increase our numbers under the name of Herbert Land and Cattle Co. Ltd. This "Pick of the Herd" gives you the opportunity to choose what you consider the best of almost 40 years of Spots 'N Sprouts breeding.



GYPSY EYES

106

KFC **GYPSY EYES** 7G

FEMALE [CAN]9858-PB

BW: 80 LBS. WW: 650 LBS.

KFC 7G

JAN 15, 2019

WADG: 2.59 LBS.

PUREBRED

SIRE RIVER HILL 26T WALKER 60W
RIVER HILL 60W EXCALIBUR 345E
 PRAIRIE HILL DREAMAKER 88K

DAM PRAIRIE HILL PATCH 6P
LLE SNOWY RIVER 7W
 UPTO SPECS POLLY 3P

RIVER HILL TRAFFIC JAM 26T
 RIVER HILL SHOW ME OFF 60S
 PRAIRIE HILL MASTERPLAN 97G
 PRAIRIE HILL LUCKY ROLLIE 87G

PRAIRIE HILL MASTERPLAN II 87L
 PRAIRIE HILL 7H
 SPOTS'N SPROUTS LIONHART 102L
 A&W HANNAH 7M

//////////////////// **CONSIGNED BY: KFC FARMS LTD.**

From the top end of the keeper pen! Just close your eyes for a moment and envision the most powerful, deep sided, huge topped, perfectly balanced, amazing feet and legs, yet clean fronted and one of the nicest skeletal shaped female heads you will find...now...open your eyes! It's KFC Gypsy Eyes 7G!

Myostatin 1 Copy NT821, Homo Polled, Homo Black



107

INC VIRGINIA 4G

FEMALE APPLIED FOR
BW: 85 LBS.

INC 4G JAN 16, 2019
PUREBRED

SIRE SPOTS 'N SPROUTS NEFROM 101N
STAR BANK KING GEORGE 82U
STAR BANK 11H

DAM CODIAK OSCAR GNK 8S
CODIAK GYPSY RAIN GNK 63B
CODIAK SHELLY GNK 11X

PRAIRIE HILL ENTICER 89G
SPOTS 'N SPROUTS 6A
NORALTA 9E
LIGHTNING LADY 19C

CODIAK PHLEP GNK 3P
CODIAK MATEUSA RKW 63M
HWY. 4 SPECKLE PARK 2H
CODIAK REVA GNK 46R

////////// **CONSIGNED BY: INC CATTLE COMPANY**

Sired by the King himself, INC Virginia 4G has power and performance written all over her. Her dam, GNK Gypsy Rain 63B, is one of the deepest bodied and best footed donor females in the entire INC herd. Virginia will be the cow you want in your front pasture for everyone to see!
EDe, Myostatin 0, No Varients Present, Homo Polled



GLORIA



GNK 56A - Paternal Grand sire



SMS 154B - Dam

108

GREENWOOD GLORIA DJP 154G

FEMALE [CAN]9757-PB DJP 154G FEB 5, 2019
BW: 73 LBS. 205 WT: 655 LBS. PUREBRED

SIRE
CODIAK LAYNE GNK 56A
UNEEDA EVEREST 130E
MISTY FRITZ OF UNEEDA 130A

DAM
UNEEDA WONDERBAR 05W
DOUBLE S BELVA 154B
P.A.R. RAINA DOLL 154W

CLEAR VIEW TY 205R
CODIAK NAMELESS RKW 45N
UNEEDA WONDERBAR 05W
MISTY FRITZ OF UNEEDA 13Y

P.A.R. TOUCH DOWN 600T
LANDRY OF P.A.R. 5L
P.A.R. ROLLIN STONE 01R
RAINA OF P.A.R. 54R

////////// **CONSIGNED BY: GREENWOOD**

Eye appeal, depth, sharp fronted, stylish are all words that can be used to describe this fault free heifer. From the beginning, 154G has always had the showstopper look, with all the length and structural soundness you could ever need. Her dam, 154B, is a favourite here at Greenwood; she has a beautiful udder, perfect feet and is as docile as they come. This heifer has an extremely exciting future ahead of her.
Homo Black, Hetero Polled, Myostatin Non Carrier



CAJA 1B - Sire



PAR 70E - Dam



GODDESS

109 GREENWOOD **GODDESS** DJP 70G

FEMALE [CAN]9515-PB DJP 70G FEB 18, 2019
BW: 71 LBS. 205 WT: 675 LBS. PUREBRED

SIRE UNEEDA ZAPPER 13Z
CAJA ZEPPELIN 1B
NOTTA 60W PHOTO-FINISH 1Z

DAM P.A.R. ARRÊT 38A
WREN OF P.A.R. 70E
WREN OF P.A.R. 7Z

UNEEDA WALTER 21W
MISTY FRITZ OF P.A.R. 13M
RIVER HILL 26T WALKER 60W
NOTTA PHO-FINISH 54P

RIVER HILL TRAFFIC JAM 26T
WILLOW OF MX 20W
P.A.R. TOUCH DOWN 600T
WREN OF P.A.R. 7W

70G has a ton to offer; a smooth made heifer packed full of power and performance. She is big bellied, easy fleshing, structurally sound, with a disposition that we can all fall in love with. Her mother is an exciting young female coming from one of P.A.R. Ranch's top cow families, 70E is an eye catching two-year old with a beautiful udder under her. Sired by the great Caja Zeppelin that has been producing flawless females, this heifer has all the tools to become a powerhouse in the show ring and the front pasture.

Homo Black, Homo Polled, Myostatin Carrier

109a 5 EMBRYOS | **ZEPPELIN** x **WREN**

Embryos are exportable to North America, EU, Australia. Embryos stored at Davis-Rairdan International. Storage and shipping fees are responsibility of the purchaser. Guaranteed two pregnancies if implanted by a certified technician. Full sibling to DJP 70G.

//////////////////// **CONSIGNED BY: GREENWOOD**



**CHOICE
LOT**

110a

COLGAN'S GEMINI 02G

FEMALE [CAN]9661-PB
BW: 81 LBS.

CCCC 02G

JAN 5, 2019
PUREBRED

SIRE MOOVIN ZPOTZ CAMARO 6X
COLGAN'S BAXTER 1B
MOOVIN ZPOTZ ROXY AMBER 4R

LEGACY TURNPIKE CRUISER 27T
STYALS LUCKY PRINCESS 9L
P.A.R. MR. POWERSTROKE 4M
MATTI OF P.A.R. 25M

DAM RIVER HILL 12X ZAAR 7Z
RAVENWORTH WESTERN JEWEL 116B
RIVER HILL 101U YOLA 35Y

CODIAK FIDDLER GNK 12X
RIVER HILL 12U X-ULTRA 07X
SPOTS 'N SPROUTS ULYSSES 101U
RIVER HILL 64S WHISPER 25W

CONSIGNED BY: COLGAN'S CATTLE COMPANY

Selling choice on these two full sisters that came straight out of our keeper pen and are from a proven mating. Jewel was the 2015 CWA Grand Champion Speckle Park female and Baxter requires no introduction. We are confident that either one of these heifers will become a future foundation/donor female.

Homo Polled, Homo Black, Myostatin Non Carrier

**CHOICE
LOT**



NRCS

GOLDEN JEWEL

110b

COLGAN'S GOLDEN JEWEL 05G

FEMALE [CAN]9662-PB
BW: 97 LBS.

CCCC 05G

JAN 9, 2019
PUREBRED

/////// CONSIGNED BY: COLGAN'S CATTLE COMPANY
Homo Polled, Hetero Black, Myostatin Non Carrier

SIRE MOOVIN ZPOTZ CAMARO 6X
COLGAN'S BAXTER 1B
MOOVIN ZPOTZ ROXY AMBER 4R

LEGACY TURNPIKE CRUISER 27T
STYALS LUCKY PRINCESS 9L
P.A.R. MR. POWERSTROKE 4M
MATTI OF P.A.R. 25M

DAM RIVER HILL 12X ZAAR 7Z
RAVENWORTH WESTERN JEWEL 116B
RIVER HILL 101U YOLA 35Y

CODIAK FIDDLER GNK 12X
RIVER HILL 12U X-ULTRA 07X
SPOTS 'N SPROUTS ULYSSES 101U
RIVER HILL 64S WHISPER 25W



**GUILTY
PLEASURE**

111 RIVER HILL GUILTY PLEASURE 75G

FEMALE APPLIED FOR
BW: 88 LBS.

BED 75G

JAN 6, 2019
PUREBRED

SIRE SIX STAR 82U ROYAL FLESH 101Y
PREMIER 101Y LOGIC L11
SPKNZ H2

DAM RIVER HILL TRAFFIC JAM 26T
RIVER HILL 26T ALYNDA 025A
PURA VIDA YORBALINDA 25Y

STAR BANK KING GEORGE 82U
STAR BANK 53R
MAINSTREAM ELDORADO E11
SPKNZ E36

A & W JOEY 55P
CALAMASUE 26R
CODIAK CRIKEY GNK 13U
PURA VIDA FRANCESCA 2T

//////////////////// **CONSIGNED BY: RIVER HILL FARM**

A Premier Logic female, structurally correct, super functional with lots of growth potential. This female has a very impressive front end, will add style to any herd.



112

RIVER HILL **GOTTA CHANCE** 17G

FEMALE [CAN]10075-PB
BW: 88 LBS.

CRD 17G

MAR 28, 2019
PUREBRED

[SIRE] MOOVIN ZPOTZ AVENGER 28A
WRANGLER MR PERFECT 8D
ANGEL OF P.A.R. 8Z

[DAM] RIVER HILL 68L STRIKER 50U
RIVER HILL BLACK CHANCE 17Z
RIVER HILL TAKE A CHANCE 5T

MOOVIN ZPOTZ CAMARO 6X
HWY 4 SPECKLE PARK 4R
P.A.R. XCALABAR 6X
ANGEL OF P.A.R. 8U

STAR BANK LACERTA 68L
PRAIRIE HILL NABOB 50N
P.A.R. MOO FASSA 03M
RIVER HILL CINDER 5M

////////// CONSIGNED BY: CARLA DUCHERER - RIVER HILL FARM

Gotta Chance comes from the great Cinder 5M line, with a long history of proven females. She is sure to offer performance, presence and functionality. Sired by the 2018 CWA Speckle Park Champion Bull, Wrangler Mr Perfect.



RAC 20A - Sire



GNK 69B - Dam



US 2G



US 2G

113

US **ADDICTION** 2G

FEMALE [CAN]9631-PB US 2G JAN 14, 2019
BW: 76 LBS. SEPT 24 WT: 730 LBS. WPDA: 2.58 LBS. PUREBRED

SIRE
P.A.R. X-EL 54X
PAR MX ARE YOU READY 20A
WILLOW OF MX 20W

DAM
RIVER HILL 26T YAGER 99Y
CODIAK SHZ MY SISTER GNK 69B
CODIAK URE OKAY GNK 10U

P.A.R. ROLLIN STONE 01R
ASPEN ACRES KLASSY LADY 54K
P.A.R. THROTTLE 66T
SPECIAL DESIGN OF P.A.R. 20S

RIVER HILL TRAFFIC JAM 26T
PRAIRIE HILL HEARTBREAKER 99L
RAVEN MEADOWS MAGNUM 10N
CODIAK UNIQUE GNK 8R

//////////////////// **CONSIGNED BY: UNDERHILL SPECS**

2019 Champion Ontario Heifer Calf!
Addiction 2G would represent the thickest topped heifer calf we have produced to date here at Underhill SPECS. That said, there is still plenty of femininity in her clean front end and she moves out with complete ease. Her little-known sire passes extra performance and a great temperament. We feel this heifer will be deadly competitive as a yearling in the show ring. If the buyer decides to flush this female, we would be a customer. We hope you like her!

Polled, Black Coat, Myostatin Carrier



US 5D - Sire



BMZ X27 - Dam



US 10G



114

US **GAME DAY** 10G

FEMALE [CAN]9638-PB US 10G FEB 7, 2019
BW: 89 LBS. SEPT 24 WT: 638 LBS. WPDA: 2.40 LBS. PUREBRED

SIRE RIVER HILL 60W LINE DRIVE 54Z
UNDERHILL BEEF WAGON 5D
PRAIRIE HILL RACHEL 88R

DAM CALAMASUE 46U
MOOVIN ZPOTZ FERRARI 27X
HWY. 4 SPECKLE PARK 4L

RIVER HILL 26T WALKER 60W
NOTTA PHO-FINISH 54P
PRAIRIE HILL DURMAX 93N
PRAIRIE HILL DREAMAKER 88K

ALMOST A RANCH MUSTANG GT 1R
CALAMASUE 17P
HWY. 4 SPECKLE PARK 3H
HWY. 4 SPECKLE PARK 3F

///////////////// **CONSIGNED BY: UNDERHILL SPECS**

Game Day 10G is really easy on the eyes with all her extra flash. Her dam is the great Moovin Zpotz Ferrari cow that continues to output winners for our program. She is the first offspring to sell off the Underhill Beef Wagon sire, that has blown us away with the quality and consistency of his offspring. Three of the four animals in our CWA show string are Beef Wagon offspring - any questions? If the buyer decides to flush this female, we would be a customer. We hope you like her!
Polled, Black Coat, Myostatin Carrier



LIGHTNING LADY



GDB 103C - Sire



JKH 7T - Dam

115 RAVENWORTH **LIGHTNING LADY** 111G
 FEMALE [CAN]9945-PB GDB 111G FEB 8, 2019
 BW: 79 LBS. OCT 1 WT: 735 LBS. PUREBRED

SIRE
 RAVENWORTH KLEOS 3Y
RAVENWORTH INVICTUS 103C
 RAVENWORTH NORTHERN STAR 101A

DAM
 CODIAK NORSEMAN RKW 38N
SPOTS 'N SPROUTS 7T
 STYALS MOONLIGHT LADY 4M

STAR BANK 64R RIO 6W
 STAR BANK TUCANA 38T
 SPOTS 'N SPROUTS STANDS ALONE
 STAR BANK NIGHTGLOW 46N

CODIAK PRAIRIE FIRE RKW 14J
 PRAIRIE HILL GEM 38G
 CODIAK PRAIRIE FIRE 10J
 LIGHTNING LADY 10B

////////// **CONSIGNED BY: RAVENWORTH CATTLE**

Long bodied, great performance and natural thickness. 111G is out of a great producing dam in our herd, Spot 'N Sprouts 7T, who is a big bodied cow with tons of middle. This heifer carries a lot of her dam's traits while gaining thickness and style from her sire, Ravenworth Invictus 103C. We have a number of Invictus milking daughters and they have fantastic udders and are very maternal. An excellent temperament and very docile, this heifer is a real gem to work with. To commemorate our 10th year in Speckle Park cattle we have selected one of our top 2019 born heifers to offer in the Agribition National Sale. After 10 years of breeding and selecting, we are very proud to be able to offer a heifer of such high quality. Myostatin no variance, Homozygous Black, Homozygous Polled



GNK 36Y - Sire



PGE 24C - Dam



JENNY

116

BELMORAL'S **JENNY** 14G

FEMALE [CAN]9802-PB
BW: 76 LBS.

PGE 14G MAR 30, 2019
PUREBRED

SIRE
Codiak Trump GNK 20T
CODIAK SKEETER GNK 36Y
Codiak Ursula GNK 3U

DAM
River Hill 26T Yager 99Y
BELMORAL'S JENNY 24C
Spots 'N Sprouts 3U

HWY. 4 SPECKLE PARK 20L
EL RANCHO NO GOTTO SHANS 02J
ROB 'N SON'S FARMS 3S
ROB'N SONS FARMS 7N

RIVER HILL TRAFFIC JAM 26T
PRAIRIE HILL HEARTBREAKER 99L
STYALS LIGHTNING LADD 14P
STYALS JENNY 4P

///////////////// **CONSIGNED BY: BELMORAL FARMS**

A Codiak Skeeter heifer out of a good Yager 99Y daughter, who's out of Spots 'N Sprouts 3U, a never miss cow. Founder of the good Jenny family at Belmoral.

Myostatin Non Carrier, Homo Polled, Homo Black



GLIMMER



LS 14E - Sire



LS 16D - Dam

117

CALICO CREEK **GLIMMER** 17G

FEMALE [CAN]10092-PB
BW: 92 LBS.

LS 17G

MAR 10, 2019
PUREBRED

SIRE
CODIAK PUTNAM GNK 61Y
CALICO CREEK EPIC 14E
PETULA OF P.A.R. 61P

DAM
CALICO CREEK AJAX 5A
CALICO CREEK DAZZLE 16D
CALICO CREEK BLANCA 10B

CODIAK OSCAR GNK 8S
NORTHERN LIGHTS 14N
P.A.R. KING PIN 1K
LUCKY STRIKE OF P.A.R. 6K

REDNECK XCITMENT 6X
CN ZPOTZ U CAN'T C ME 2U
P.A.R. THROTTLE 66T
PETULA OF P.A.R. 61P

CONSIGNED BY: CALICO CREEK SPECKLE PARKS

Calico Creek Glimmer 17G is a fancy, correct made heifer with some added size and frame. Her sire, Calico Creek Epic, will be in the stall along side her for your viewing. Epic was chosen at a young age to be a potential herd sire and to date he is exceeding our original expectations. Glimmer descends from three generations of donor cows here on the farm. Backed by a cow family that excels in phenotype and production, she is sure to carry on the legacy. She will grow into a brood cow that will fit into any type of program. **Homo Polled, Homo Black, Myostatin Non Carrier**



Flush Mate



SHOW GIRL

118

WILCOX **SHOW GIRL** 12G

FEMALE [CAN]9996-PB WILC 12G JAN 13, 2019
BW: 82 LBS. SEPT 14 WT: 794 LBS. PUREBRED

SIRE
CODIAK CRIKEY GNK 13U
CODIAK EAGLE GNK 46Y
CODIAK NICE LADY RKW 25N

DAM
P.A.R. MOO FASSA 03M
RIVER HILL SHOW ME OFF 60S
RIVER HILL SNAP SHOT 60M

RAVEN MEADOWS MAGNUM 10N
CODIAK RKW 07J
HWY. 4 SPECKLE PARK 2H
CODIAK PRAIRIE FIRE RKW 01J

P.A.R. KING PIN 1K
ASPEN ACRES 3A
P.A.R. HEMORRHOID 25H
RIVER HILL SAGE 59J

CONSIGNED BY: WILCOX LIVESTOCK

Here's a heifer with a lot of performance. This bigger framed heifer has good thickness. She's a long, deep bodied female with good eye appeal. We purchased three embryos from River Hill Farms and we were lucky enough to get three calves; two bulls and this heifer. We showed the two bulls last year at Agribition. Both bulls were purchased by purebred breeders; P.A.R. Ranch and Ranch Lougami. If you're looking for a female with a strong maternal backing it doesn't get any better than the River Hill Show Me Off 60S cow.

Homo Polled, Homo Black, Myostatin Non Carrier

We reserve a right to flush at our expense and buyer's convenience.



GOOD LOOKEN

119 WILCOX GOOD LOOKEN 23G

FEMALE [CAN]9978-PB WILC 23G JAN 14, 2019
BW: 79 LBS. SEPT 14 WT: 711 LBS. PUREBRED

SIRE
FLYING E ABNER 4A
FLYING E DIGGER 4D
LEGACY MARY 10M

DAM
SILVER TIPS SPECIALITY 19Z
PORTERCREST GOOD LOOKEN 1D
PORTERCREST ANNIE 3A

P.A.R. X-LOG 21X
LEGACY RENA 100R
P.A.R. LOTTO 54F
SPOTS 'N SPROUTS 1D

REMIN'S SPECIAL 1L
JENCREST TANYA 4T
JENCREST TARZAN 3T
UPTO SPECS WYNN 9W

Good Looken 23G is a feminine made female with good thickness and depth of body. We have consigned our two top heifer calves. Her sire was an extremely thick made bull that was structurally correct. He placed second in his split at 2018 Agribition and was named Reserve Grand Champion Bull at 2018 Manitoba's Ag Ex. 23G's dam is a strong young cow that has a nice udder. Hetero Polled, Homo Black, Myostatin Non Carrier

119a

4 EMBRYOS | **DIGGER X 11Y**

FLYING E DIGGER 4D X SPOTS 'N SPROUTS 11Y

DAM
CODIAK NORSEMAN RKW 38N
SPOTS 'N SPROUTS 11Y
SPOTS 'N SPROUTS 8L

Canada and USA Qualified. 11Y is a cow that you really have to appreciate when she gets out on the move. She's structurally correct with tons of natural thickness and depth of body. When touring Don Bell's herd, you can see the strong influence 11Y has had in it. Her daughters are hardworking females with nice udder structure that bring in strong calves every year.



PES 4D - Sire of Lots 120 & 120a



NPK 1D - Dam of Lot 120



SNS 11Y - Dam of Lot 120a

CODIAK PRAIRIE FIRE RKW 14J
PRAIRIE HILL GEM 38G
NORALTA 9E
SPOTS 'N SPROUTS 14E

CONSIGNEE BY: WILCOX LIVESTOCK



DAM 31E - Sire of Lots 120 & 120a

Here is the first Electric calf to ever be born! She is as wide as she is tall and she catches everyone's eye that comes for a tour. She possesses the genetic power to keep producing on and on. This is a great female for any herd.



GLORIA

120

D.A.M. DOTS **GLORIA** 11G

FEMALE [CAN]9975-PB
BW: 64 LBS.

DAM 11G JAN 14, 2019
PUREBRED

SIRE RIVER HILL 12X A'MAN 94A
D.A.M. DOTS 94A **ELECTRIC** 31E
NOTTA 68L LIGHTNING LADY 31X

DAM SIX STAR 68L CHARGER 110Y
D.A.M. DOTS **BEAUTY** 6B
SPOTS 'N SPROUTS 14X

CODIAK FIDDLER GNK 12X
PRAIRIE HILL PASSION 94P
STAR BANK LACERTA 68L
STAR BANK 54R

STAR BANK LACERTA 68L
STAR BANK 1S
CODIAK NORSEMAN RKW 38N
SPOTS 'N SPROUTS 4L

///////////////// **CONSIGNEE BY: D.A.M. DOTS RANCH**

120a

TWO (2) PACKAGES OF

Eight (8) Straws | D.A.M. DOTS 94A **ELECTRIC** 31E

Electric 31E is a bull that impressed us from day one. His phenomenal growth rate is one of the best in the entire breed. He provides lots of calving ease and puts power into all his calves. His calves fill out and are definitely the stand outs in a herd. He works with any match up. If you're looking for a bull to add width and depth as well as feed efficiency this is the bull to use. He also adds the benefit of being a big scrotal bull measuring over 40 cm. He has plenty of banners behind his name, the most important one being Grand Champion Female at Agribition with his dam, Notta 68L Lightning Lady 31X showing that he has the maternal genetics to pass on to his females.

Stored at Bow Valley Genetics. Storage and transportation is the responsibility of the purchaser. **Canadian Exclusive Only until November 2020.**

///////////////// **CONSIGNEE BY: D.A.M. DOTS RANCH & LEHR RANCHING** 23



GENUINE

121

C SPECKLES GENUINE 62G

FEMALE
BW: 70 LBS.

[CAN]9970- PB

CTM 62G

FEB 11, 2019

PUREBRED

SIRE Notta 101Y Black Cap 151A
NOTTA 151A CAUSE N EFFECT 309C
Notta 300X Theta 11A

DAM SPOTS 'N SPROUTS ZINGER 112Z
PURA VIDA BUENA VISTA 54B
PURA VIDA XANADU 22X

SIX STAR 82U ROYAL FLESH 101Y
NOTTA 50S JANETTE 5W
SPOTS 'N SPROUTS STANDS ALONE
STAR BANK THETA 42T

RIVER HILL SKIPPER 6S
SPOTS 'N SPROUTS 10U
STAR BANK LACERTA 68L
STYALS RKW 7P

CONSIGNED BY: C SPECKLES

TWO (2) PACKAGES OF

121a

Three (3) Embryos **CAUSE N EFFECT x 14X**

NOTTA 151A CAUSE N EFFECT 309C x SPOTS 'N SPROUTS 14X

DAM CODIAK NORSEMAN RKW 38N
SPOTS 'N SPROUTS 14X
SPOTS 'N SPROUTS 4L

14X is a big, powerful cow who always producing an outstanding calf. She is structurally correct with a wide top, tons of middle and a good udder.
Homo Polled, Black Dominant and Myostatin Non Carrier. Embryos stored at Bow Valley Genetics. Storage and transportation is the responsibility of the purchaser.

CONSIGNED BY: D.A.M. DOTS RANCH



JMG 309C - Sire of Lots 121 & 121a



JKH 14X - Dam of Lot 121a

Another Cause N Effect stamped female. He leaves his mark on these heifer calves by making them deep and wide. The Cause N Effect females we have in our herd are great milkers and she's sure to be the same. This heifer calf is full of colour and has that eye appeal everyone wants. She's destined to turn into a great cow.



GENIE

122

WILLOW LANE **GENIE** 2G

FEMALE [CAN]9830-PB MAK 2G JAN 15, 2019
BW: 80 LBS. PUREBRED

SIRE UNEEDA ZAPPER 13Z
CAJA ZEPELIN 1B
NOTTA 60W PHOTO-FINISH 1Z

DAM P.A.R. AIRWAVE 16A
WILLOW LANE EMBER 1E
D.A.M. DOTS 21U CASHIN' IN 11C

UNEEDA WALTER 21W
MISTY FRITZ OF P.A.R. 13M
RIVER HILL 26T WALKER 60W
NOTTA PHO-FINISH 54P

P.A.R. TOUCH DOWN 600T
MONALISA II OF P.A.R. 6T
RIVER HILL 12X A'MAN 94A
SPOTS 'N SPROUTS 21U

CONSIGNED BY: WILLOW LANE LAND & CATTLE

It is with extreme excitement that I offer my first heifer for sale at the prestigious National Sale. Sired by the twice crowned Grand Champion Bull 2016, CAJA Zeppelin1B! 2G is a heifer that has been a head turner from birth, coming from a first calver who did a tremendous job milking and raising this heifer. 2G packs in depth of body, growth, clean front end, solid structure and length of spine, all in one powerful feminine package. 2G is backed by proven bloodlines, from the great 21U cow to the powerful Zeppelin bull. This heifer was bred to do great things.



GRIDLOCK

123 SECOND CHANCE **GRIDLOCK** 18G

FEMALE [CAN]9913-PB
BW: 80 LBS.

SCSP 18G

FEB 6, 2019
PUREBRED

SIRE
CODIAK OH MY GOSH GNK 60A
RIVER HILL 60A DIGNITARY 66D
RIVER HILL 13U SHOW GIRL 60B

DAM
LEGACY DEVITO 44X
SECOND CHANCE APPLE TART 08A
SECOND CHANCE YAHOO 8Y

CLEAR VIEW TY 205R
CODIAK UNIQUE GNK 8R
CODIAK CRIKEY GNK 13U
RIVER HILL SHOW ME OFF 60S

LEGACY UPPER CUT 74U
LEGACY TURN-ON 49T
SPOTS 'N SPROUTS UNO 102U
TALISA OF SARA LEE 8T

////////// **CONSIGNED BY: SECOND CHANCE SPECKLE PARK**

Deep body, wide top, structurally correct and an amazing disposition. What more could you ask for in a future cow? A third generation Second Chance female who carries some out cross genetics.
Myostatin Carrier, Homo Black, Homo Polled



GLAMOR GIRL

124

P.A.R. GLAMOR GIRL 15G

**FEMALE [CAN]10037-PB PAR 15G MAR 24, 2019
BW: 73 LBS. PUREBRED**

SIRE P.A.R. ACE IN A HOLE 66A
P.A.R. CASANOVA 55C
POPPY OF P.A.R. 55P

DAM RIVER HILL 26T WALKER 60W
RAYLEEN OF P.A.R. 15A
RAINA II OF P.A.R. 121X

P.A.R. TOUCH DOWN 600T
P.A.R. WONDER BRA 66W
CALAMASUE 4M
MELISSA OF P.A.R. 5M

RIVER HILL TRAFFIC JAM 26T
RIVER HILL SHOW ME OFF 60S
P.A.R. THROTTLE 66T
RAINA OF P.A.R. 21R

CONSIGNED BY: P.A.R. RANCH

Glamor Girl exhibits natural thickness along with being very correct in her make up. She will be shown at the CWA. Her sire, Casanova 55C, was Junior Champion at the 2017 Agribition. He is producing natural muscling in all of his offspring. Her dam, Rayleen of P.A.R., an embryo daughter off River Hill Walker, exhibits soundness and great disposition.

Polled



GIRLS GOT RHYTHM



RMS 103E - Sire



RMS 100D - Dam



RMS 110F - Maternal Sister

125 GIRLS GOT RHYTHM OF MX 110G

FEMALE [CAN]9984-PB
BW: 78 LBS.

RMS 110G MAR 5, 2019
PUREBRED

SIRE P.A.R. CASANOVA 55C
MX EL GUAPO 103E
HIGH MAINTENANCE OF MX 103Z

DAM P.A.R. THROTTLE 66T
RAINA OF MX 100D
RAINA OF P.A.R. 54U

P.A.R. ACE IN A HOLE 66A
POPPY OF P.A.R. 55P
P.A.R. THROTTLE 66T
SPECIAL DESIGN OF P.A.R. 20S

P.A.R. PAPA RAZZI 6P
ROB 'N SON'S FARMS 6P
HWY 4 SHOW STOPPER 2S
RAINA OF P.A.R. 54R

CONSIGNED BY: MX RANCH

A very fancy, eye catching young heifer with great depth and thickness through out. The first El Guapo female to be sold and also the first female I have parted with off the Raina line. Definitely a very hard decision to part with her. El Guapo has been renowned for his structure and has an amazing first crop of calves this year. Her dam was Reserve Grand Champion at Farmfair as a calf and Junior Champion Female in Lloydminster as a yearling. Her maternal sister was shown in 4-H by Madison as her first Clover Bud Project and was also Champion Purebred at this year's first junior show. Her sire and maternal sister will also be in the show string to look at.

Homo Black, Myostatin Free, Homo Polled



GLAMOUR

126

UNLIMITED SPOTS GLAMOUR 13G

FEMALE APPLIED FOR
BW: 68 LBS.

LAF 13G

MAR 8, 2019
PUREBRED

SIRE CALAMASUE 46U
CN ZPOTZ XECUTIVE DECISION 1X
CLEAR VIEW MILKYWAY 204R

DAM UNEEDA ZIPPER 60Z
UNLIMITEDSPOTS DEMI 10D
MOOVIN ZPOTZ DEVILLE 12X

ALMOST A RANCH MUSTANG GT 1R
CALAMASUE 17P
RIVER HILL HU 5L
STAR BANK MILKY WAY 2K

UNEEDA WONDERBAR 05W
UNA OF UNEEDA 60U
LEGACY TURNPIKE CRUISER 27T
STYALS KAILY 2K

CONSIGNED BY: UNLIMITED SPOTS

This heifer is structurally correct in every way! She has a beautiful colouring that will catch the eye of anyone passing by. She has exceptional width and depth, making her perfect for carrying future calves!
Homo Polled, Homo Black, Myostatin Non Carrier



GYPSY



LSA 06G - Sire

127

UNLIMITED SPOTS **GYPSY** 06G

FEMALE

BW: 62 LBS.

APPLIED FOR

LAF 06G

JAN 28, 2019

PUREBRED

SIRE
 CODIAK EAGLE GNK 46Y
CLADDAGH CONN LSA 06G
 CODIAK TESSA GNK 27T

DAM
 P.A.R. ROLLIN STONE 01R
MANDY OF P.A.R. 100Y
 MANDY II OF P.A.R. 10T

CODIAK CRIKEY GNK 13U
 CODIAK NICE LADY RKW 25N
 HWY. 4 SPECKLE PARK 20L
 SPOTS 'N SPROUTS 3K

P.A.R. KING PIN 1K
 ASPEN ACRES 01B
 P.A.R. PAPA RAZZI 6P
 MANDY OF P.A.R. 10M

CONSIGNED BY: UNLIMITED SPOTS

She's an eye catcher! She has a great personality and with her length and depth of body, she is sure to be a power house of a cow in the future!
 Homo Polled, Homo Black, Myostatin Carrier NT821



CWC 5E - Sire



GUYANA

128

PRAIRIE HILL 5E GUYANA 91G

FEMALE [CAN]9966-PB
BW: 75 LBS.

CWC 91G MAR 23, 2019
PUREBRED

SIRE CODIAK KOOL CHARLIE GNK 76B
PRAIRIE HILL LOADED UP 5E
PRAIRIE HILL CAPRICE 5C

DAM RIVER HILL 50U ALL IN 60A
PRAIRIE HILL DESTINY 1D
MOOVIN ZPOTZ YVETTE 1Y

RIVER HILL 26T YAGER 99Y
A & W 013U
CODIAK SAILOR BOY GNK 20Y
MOOVIN ZPOTZ CAPRICE 32X

RIVER HILL 68L STRIKER 50U
RIVER HILL SHOW ME OFF 60S
MOOVIN ZPOTZ WEINHANDL 8W
RIVER HILL MINDY 2M

CONSIGNED BY: PRAIRIE HILL RANCH

This end of March, sweet made heifer has been a standout since birth! Her pedigree is packed with power and performance. Her sire, Prairie Hill Loaded Up 5E, being 2018 high selling bull, stamps his calves with width, depth, plus easy fleshing and awesome temperament. Her dam keeps raising amazing replacement females. Guyana 91G is a front pasture fixture. This is our first heifer offered for sale off Prairie Hill Loaded Up 5E! 91G will be palpated and vet checked before the sale.
Homo Polled, Homo Black, Myostatin Carrier NT821



LADY OF GREY



JMG 308E - Sire



CWC 33E - Dam

129

PRAIRIE HILL LADY OF GREY 33G

FEMALE [CAN]9895-PB
BW: 80 LBS.

ASKA 33G

MAR 1, 2019
PUREBRED

SIRE NOTTA 101Y BLACK CAP 151A
NOTTA KAGER 151A NITE CAP 308E
MISS SAGE 8R

DAM CODIAK KOOL CHARLIE GNK 76B
PRAIRIE HILL MISS CAPY 33E
MOOVIN ZPOTZ CAPRICE 32X

SIX STAR 82U ROYAL FLESH 101Y
NOTTA 50S JANETTE 5W
CALAMASUE 23N
MISS SAGE 6N

RIVER HILL 26T YAGER 99Y
A & W 013U
CALAMASUE 46U
HWY 4 SPECKLE PARK 4R

CONSIGNED BY: PRAIRIE HILL RANCH

Prairie Hill Lady of Grey 33G is a fancy, feminine female. Straight legs, structurally correct, clean fronted female with capacity. She comes from a long line of well producing females with exceptional udders. Her dam was class winner at 2018 Agribition. Her sire, Notta Kager 151A Nite Cap 308E, goes back to the "Famous" Prairie Hill John Wayne 50S bull. PH John Wayne 50S has been used extensively in Australia. Notta Nite Cap 308E has tons of eye appeal and a powerful pedigree. This female is colored perfectly and will fit into anyone's front pasture. 33G will be palpated and vet checked before the sale.

Homo Polled, Myostatin Non-Carrier



130

ANDCHRIS GRACIE 7G

FEMALE [CAN]10024-PB ACM 7G JAN 26, 2019
BW: 78 LBS. PUREBRED

SIRE MOOVIN ZPOTZ CAMARO 6X
COLGAN'S BAXTER 1B
MOOVIN ZPOTZ ROXY AMBER 4R

DAM CODIAK TRUMP GNK 20T
CODIAK LITTLE HALO 55Y
CODIAK UTAH 23U

LEGACY TURNPIKE CRUISER 27T
STYALS LUCKY PRINCESS 9L
P.A.R. MR. POWERSTROKE 4M
MATTI OF P.A.R. 25M

HWY. 4 SPECKLE PARK 20L
EL RANCHO NO GOTTO SHANS 02J
CODIAK PHLEP GNK 3P
CODIAK MATEUSA RKW 63M

////////// **CONSIGNED BY: ANDCHRIS FARMS**

Take a look at the pedigree on this heifer calf. On the dam's side, she goes back to the notable Codiak Utah 23U. Her sire is the well known Colgan's Baxter 1B, a tremendous bull. We believe that she will make a great addition to any program.



FAYE

131

ANDCHRIS FAYE 19F

FEMALE [CAN]9063-PB
BW: 78 LBS.

ACM 19F

FEB 10, 2018
PUREBRED

SIRE UPTO SPECS ULYSSES 25U
JENCREST BOB THE BUILDER 1B
JENCREST PATTI 2X

DAM CODIAK HOMBRE GNK 26X
ANDCHRIS ANNIE 5A
CODIAK ROCKING ANNE GNK 5Y

RAVEN MEADOWS MAGNUM 10N
PRAIRIE HILL REBA 154F
STAR BANK LACERTA 68L
PRIDE OF P.A.R. 1G

CODIAK TIMOTHY GNK 22T
CODIAK URE IT GNK 48U
CODIAK CRIKEY GNK 13U
CODIAK NAMELESS RKW 45N

CONSIGNED BY: ANDCHRIS FARMS

Andchris Faye is a powerful heifer with Codiak genetics all over the dam's side. Her sire, Bob The Builder 1B, is a Ulysses son from the former Jencrest herd in Ontario. She is AI bred to Underhill Wild Bill 13F, who was the top seller in the 2019 Herd Builder Sale, a Mr Perfect Son.

AI bred to Underhill Wild Bill 13F on June 18, 2019. Due March 2020.



FINE N'FANCY

132

RIVER HILL 8D FINE N'FANCY 93F

FEMALE [CAN]8326-PB
BW: 99 LBS.

BED 93F

FEB 4, 2018
PUREBRED

SIRE

MOOVIN ZPOTZ AVENGER 28A
WRANGLER MR PERFECT 8D
ANGEL OF P.A.R. 8Z

MOOVIN ZPOTZ CAMARO 6X
HWY 4 SPECKLE PARK 4R
P.A.R. XCALABAR 6X
ANGEL OF P.A.R. 8U

DAM

RIVER HILL 60W LINE DRIVE 54Z
RIVER HILL 54Z FANCY FREE 93B
RIVER HILL 12N FANCY PANTS 93U

RIVER HILL 26T WALKER 60W
NOTTA PHO-FINISH 54P
RIVER HILL NIGHT HAWK 12N
PRAIRIE HILL FANCY PANTS 93J

//////////////////// **CONSIGNED BY: RIVER HILL FARM**

Fine N'Fancy lives up to her name, but not just a fancy bred, she is extra deep bodied and powerful. Expect lots of style out of her calf as well, with power to back it up. Sired by the 2018 CWA Speckle Park Champion Bull. Pasture exposed to Wolf Lake Trade Mission 41F from April 1 to July 25, 2019. Due to calve February 2020.



FELICITY



HHH 9Y - Sire



RRR 9U - Dam



WES 106E - Service Sire

133a

GRAND SPECS **FELICITY** 21F

FEMALE [CAN]9956-PB
BW: 84 LBS.

MGM 21F

MAR 23, 2018
PUREBRED

SIRE LEGACY UPPERCUT 74U
CALAMASUE 9Y
SPOT'N SPROUTS 15K

DAM A & W 15R
REMIN'S AMULET MISS 9U
REMIN'S AMULET 9P

LEGACY SCOUT 10S
CURTIS CORNER MISS ELLI 1J
SPOTS'N SPROUTS GUNSMOKE 106G
SPOTS 'N SPROUTS 1F

BELMORAL'S SPECIAL 99H
TRIPLE A GEM 15G
REMIN'S MERITORIOUS 5M
AMULET MISS 3A

CONSIGNED BY: GRAND SPECS

Felicity is a broad backed, moderate framed, easy keeping, heavy coated individual whose sire brings together the best of Legacy and Spots 'N Sprouts and is known for his own performance and that of his progeny. Amulet Miss is a larger framed, easy keeping, heavy coated cow, with a shapely udder and highly fertile as an ET donor and as the mother of great calves including a 2019 calf at side. Felicity's full sister sells in this National Sale as well as embryos of 9U.

Homo Black, Homo Polled, Myostatin Carrier NT821

Pasture exposed to Uneeda Eveready 106E from May 20 to August 15, 2019. Eveready has proven himself to be a moderate framed, smooth, easy calving bull for heifers.



WAG 1 SR - Maternal Grand sire



RR 9P - Maternal Grand dam



FIONA

133b

GRAND SPECS **FIONA** 19F

FEMALE APPLIED FOR MGM 19F MAR 22, 2018
BW: 86 LBS. PUREBRED

SIRE LEGACY UPPERCUT 74U
CALAMASUE 9Y
SPOT 'N SPROUTS 15K

DAM A & W 15R
REMIN'S AMULET MISS 9U
REMIN'S AMULET 9P

LEGACY SCOUT 10S
CURTIS CORNER MISS ELLI 1J
SPOTS 'N SPROUTS GUNSMOKE 106G
SPOTS 'N SPROUTS 1F

BELMORAL'S SPECIAL 99H
TRIPLE A GEM 15G
REMIN'S MERITORIOUS 5M
AMULET MISS 3A

///////////////// **CONSIGNED BY: GRAND SPECS**

Fiona has a bit more frame than her flush sister but has the same broad back. Fiona is an easy keeping, heavy coated individual whose sire brings together the best of Legacy and Spots 'N Sprouts and is known for his own performance and that of his progeny. Amulet Miss is a larger framed cow, easy keeping, heavy coated cow, with a shapely udder and highly fertile as an ET donor and as the mother of great calves including a 2019 calf at side. Fiona's full sister sells in this sale.

Homo Black, Homo Polled, Myostatin Carrier NT821

Pasture exposed to Uneeda Eveready 106E from May 20 to August 15, 2019. Eveready has proven himself to be a moderate framed, smooth, easy calving bull for heifers.



BMZ 28A - Sire

134a

KEVLAR'S 55F

FEMALE **APPLIED FOR**
BW: 82 LBS.

KLR 55F

FEB 23, 2018
PUREBRED

SIRE MOOVIN ZPOTZ CAMARO 6X
MOOVIN ZPOTZ AVENGER 28A
HWY. 4 SPECKLE PARK 4R

DAM REMIN'S LORD 22X
REMIN'S 33A
REMIN'S 2X

LEGACY TURNPIKE CRUISER 27T
STYALS LUCKY PRINCESS 9L
HWY. 4 SPECKLE PARK 1L
HWY. 4 SPECKLE PARK 1J

A & W 15R
CODIAK LUCKY LADY 22S
CODIAK KOSMO GNK 17R
KSR FARM 2T

CONSIGNED BY: KEVLAR SPECKLE PARK

55F is a very thick, moderate framed, long heifer by a performance sire on Speckle Park and on commercial cows of any variety. 22S is moderate framed but extremely thick and deep as well. A & W 15R has been very successful for many Speckle Park breeders.

Myostatin Normal, Homo Polled, Homo Black.

Pasture exposed to Uneeda Eveready 106E from May 20 to August 15, 2019. Eveready has proven himself to be a moderate framed, smooth, easy calving bull for heifers.



134b

KEVLAR'S 57F

FEMALE **APPLIED FOR**
BW: 78 LBS.

KLR 57F **APR 8, 2018**
PUREBRED

///////////////// **CONSIGNED BY: KEVLAR SPECKLE PARK**

57F has a great frame from a performance sire.
Myostatin Normal, Homo Polled, Red Carrier.
Pasture exposed to Uneeda Eveready 106E from May 20 to August 15,
2019. Eveready has proven himself to be a moderate framed, smooth,
easy calving bull for heifers.

SIRE — MOOVIN ZPOTZ CAMARO 6X
MOOVIN ZPOTZ AVENGER 28A
— HWY 4 SPECKLE PARK 4R

DAM — COLD CREEK UP ROAR 5U
REMIN'S JEWEL 2Y
— REMIN'S JEWEL 2N

LEGACY TURNPIKE CRUISER 27T
STYALS LUCKY PRINCESS 9L
HWY. 4 SPECKLE PARK 1L
HWY. 4 SPECKLE PARK 1J

HWY 4 SPECKLE PARK 1R
MOOVIN ZPOTZ ROAD RASH 5R
P.A.R. JAY 1J
ASPEN ACRES JEWEL 1J



SDS 7Y - Sire

135

REMIN'S **JEWEL** 43F

FEMALE [CAN]9718-PB
BW: 81 LBS.

RRR 43F

MAR 10, 2018
PUREBRED

SIRE REDNECK WILD WILLY 2W
YOGI GOES REDNECK 7Y
ASPEN ACRES LINDA LOU 10L

DAM CODIAK GNK 24X
REMIN'S JEWEL 7B
REMIN'S JEWEL 2Y

P.A.R. MOO FASSA 03M
PRAIRIE HILL NAUGHTY GIRL 90N
ASPEN ACRES HORATIO 6H
JOY OF P.A.R. 10J

C.A.M.Y. TORQUE 03T
CODIAK URSULA GNK 3U
COLD CREEK UP ROAR 5U
REMIN'S JEWEL 2N

////////// **CONSIGNED BY: REMIN'S SPECKLE PARK**

Jewel 43F is the fourth generation of our very consistent and productive family of Jewels from our foundation, Aspen Acres Jewel 1J, out of our Lightning Lady 1B and sired by Prairie Hill Enticer 89G.

Myostatin Normal, Homo Polled, Homo Black
Pasture exposed to Uneeda Eveready 106E from May 20 to August 15, 2019. Eveready has proven himself to be a moderate framed, smooth, easy calving bull for heifers.



136

REMIN'S **PHILOMENA** 44F

FEMALE
BW: 82 LBS.

[CAN]9717-PB

RRR 44F

MAR 19, 2018
PUREBRED

SIRE] MOOVIN ZPOTZ CAMARO 6X
] **MOOVIN ZPOTZ AVENGER 28A**
] HWY 4 SPECKLE PARK 4R

DAM] CODIAK TRUMP GNK 20T
] **REMIN'S 53A**
] KSR FARM 2T

LEGACY TURNPIKE CRUISER 27T
STYALS LUCKY PRINCESS 9L
HWY. 4 SPECKLE PARK 1L
HWY. 4 SPECKLE PARK 1J

HWY. 4 SPECKLE PARK 20L
EL RANCHO NO GOTTO SHANS 02J
STYALS HIGHWAY MAN 1P
SPOTS 'N SPROUTS 1K

////////// **CONSIGNED BY: REMIN'S SPECKLE PARK**

A very fancy heifer with lots of eye appeal on a bit more frame. Philomena brings a combination of two very successful sires, Codiak Trump and Movin Zpotz Avenger.

NT821 Carrier, Red Carrier, Homo Polled
Pasture exposed to Uneeda Eveready 106E from May 20 to August 15, 2019. Eveready has proven himself to be a moderate framed, smooth, easy calving bull for heifers.



ELIZABETH

137 FLUSH | REDNECK 5C **ELIZABETH** 13E

SIRE [REDNECK ARISTOTLE 2A
REDNECK CHEESE 5C
REDNECK PICKLES 5A

DAM [P.A.R. MOO FASSA 03M
REDNECK BUBBLES 12B
PRAIRIE HILL PADDY 233P

REDNECK XCITMENT 6X
REDNECK RANCH'S U ALMOST FROZE
RIVER HILL 26T WALKER 60W
RIVER HILL 64S URBAN-ANGEL 35U

P.A.R. KING PIN 1K
ASPEN ACRES 3A
PRAIRIE HILL MASTERPLAN II 87L
PRAIRIE HILL KERRY 10K



DCD 5C - Sire



DCD 5C - Sire as a calf with his Dam



DCD 13E - Reserve Champion Female

CONSIGNED BY: 444 RANCH

Seller guarantees Six (6) Grade 1 Embryos.

Anything below six (6) will be prorated back to the buyer and above six (6) will be split between the buyer and seller. Flush is guaranteed only if performed by a certified embryo technician. Buyer pays all flush expenses. Flush must be completed before May 2020. Buyer has choice as to whichever sire they want to use.



138

3 EMBRYOS

BAXTER X RHANA

COLGAN'S BAXTER 1B X CODIAK RHANA GNK 70Y

SIRE

MOOVIN ZPOTZ CAMARO 6X

COLGAN'S BAXTER 1B

MOOVIN ZPOTZ ROXY AMBER 4R

DAM

CODIAK TRUMP GNK 20T

CODIAK RHANA GNK 70Y

CODIAK CDK 26P

LEGACY TURNPIKE CRUISER 27T
STYALS LUCKY PRINCESS 9L
P.A.R. MR. POWERSTROKE 4M
MATTI OF P.A.R. 25M

HWY. 4 SPECKLE PARK 20L
EL RANCHO NO GOTTO SHANS 02J
SAGE LAD 3L
CODIAK MARIE RKW 73M

CONSIGNED BY: COLGAN'S CATTLE COMPANY

Embryos qualified for Australia, EU and North America. The calves are eligible to be registered as purebred. SNP 50K completed on sire and dam. Storage and delivery fees are the responsibility of the purchaser. The embryos are stored at Davis-Rairdan Embryo Transplants Ltd., Crossfield, AB.

Package of three (3) Grade A embryos from a fertile Trump daughter and Baxter. This is a proven mating that has produced show quality animals. Colgan's Frasier CF 11F, a full sibling to these embryos, was shown as a bull calf and will be returning to the show ring in 2019 as a yearling bull.



**WALL
STREET**



**WESTERN
JEWEL**

139

3 EMBRYOS

WALL STREET X WESTERN JEWEL

JSF WALL STREET 36E X RAVENWORTH WESTERN JEWEL 116B

SIRE — ASPEN ACRES T.N.T. 4Y
JSF WALL STREET 36E
 — REDNECK WHISKEY 7W

DAM — RIVER HILL 12X ZAAR 7Z
RAVENWORTH WESTERN JEWEL 116B
 — RIVER HILL 101U YOLA 35Y

SPOTS AND SPROUTS DYNAMITE 23T
 ASPEN ACRES 4U
 REDNECK RANCH'S TEDDY 5T
 REDNECK RANCH'S SCARLET 1S

CODIAK FIDDLER GNK 12X
 RIVER HILL 12U X-ULTRA 07X
 SPOTS 'N SPROUTS ULYSSES 101U
 RIVER HILL 64S WHISPER 25W

CONSIGNED BY: COLGAN'S CATTLE COMPANY

Embryos qualified for Australia, EU and North America. The calves are eligible to be registered as purebred. SNP 50K completed on sire and dam. Storage and delivery fees are the responsibility of the purchaser. The embryos are stored at Davis-Rairdan Embryo Transplants Ltd., Crossfield, AB.

Package of three (3) Grade A embryos from the 2015 CWA Grand Champion Speckle Park female and JSF Wall Street. There will be no more embryos offered on this mating after this sale, as we will be using the remainder in our program.



**OUTBACK
JOEY**



**PRAIRIE
LILY**

TWO (2) PACKAGES OF

140

3 IVF EMBRYOS

OUTBACK JOEY X PRAIRIE LILY

OUTBACK JOEY 25D X RAVENWORTH PRAIRIE LILY 101C

SIRE

CODIAK OH MY GOSH GNK 60A

OUTBACK JOEY 25D

RIVER HILL 54Z BELLA-JOY 25B

DAM

STAR BANK LACERTA 68L

RAVENWORTH PRAIRIE LILY 101C

RAVENWORTH PRAIRIE LILY 10Y

CLEAR VIEW TY 205R

CODIAK UNIQUE GNK 8R

RIVER HILL 60W LINE DRIVE 54Z

RIVER HILL 68 ULTIMATE JOY 25U

SPOTS 'N SPROUTS JUNO 103J

STAR BANK 55H

STAR BANK 64R RIO 6W

STAR BANK TARAZED 46T

CONSIGNED BY: NOTTA RANCH

Two packages of three (3) IVF Embryos, USA and Canada Qualified Only. Guarantee one (1) pregnancy out of each lot if implanted by a certified technician.

Prairie Lily 101C is a Star Bank Lacerta daughter with tremendous length and eye appeal. We chose Outback Joey as a sire to increase size and guarantee 100% colour pattern on the offspring.



HFF South Paw 1D
Maternal Sibling to embryos

CINDER

River Hill 03M Cinder 15U is a cow that we get very excited about. A daughter off a pair of proven foundation animals in P.A.R. Moo Fassa and River Hill Cinder 5M. This 11 year old cow hasn't slowed down one bit. She is doing an amazing job with her heifer calf at side. She is a large framed cow with beautiful structure, capacity, exceptional foot quality and a perfect udder. We purchased this cow from Doug Hiller. She has produced show stopping prospect steers and heifers for Doug that have sold through his sale, "Colours of Fall Prospect Steer and Heifer Sale". Her most notable son is HHF South Paw 1D. Embryos sired by the proven Avery Creek Banjo, that continues to produce top notch cattle and our exciting young sire Future 20F! We feel these are both very promising crosses.

Cinder 15U is Homo Black, Hetero Polled, Myostatin Carrier.

Banjo is Homo Black, Homo Polled, Myostatin Non Carrier.

Future is Homo Black, Homo Polled, Myostatin Non Carrier.

141a

3 EMBRYOS

FUTURE X CINDER

UNLIMITEDSPOTS GRNWD FUTURE20F X RIVER HILL 03M CINDER 15U

SIRE RIVER HILL BACKGROUND 025B
UNLIMITEDSPOTS GRNWD FUTURE20F
BLACKIE RAINA OF P.A.R. 21Z

DAM P.A.R. MOO FASSA 03M
RIVER HILL 03M CINDER 15U
RIVER HILL CINDER 5M

RIVER HILL 26T YAGER 99Y
RIVER HILL 64S WHISPER 25W
P.A.R. XCALABAR 6X
RAINA OF P.A.R. 21R

P.A.R. KING PIN 1K
ASPEN ACRES 3A
P.A.R. HEMORRHOID 25H
CODIAK PRAIRIE FIRE RKW 05J

141b

3 EMBRYOS

BANJO X CINDER

AVERY CREEK BANJO 01B X RIVER HILL 03M CINDER 15U

SIRE ZORRO MATTERS 1Z
AVERY CREEK BANJO 01B
TUMBLEWEED ACRES LULU 18Y

RIVER HILL SKIPPER 6S
SPOTS 'N SPROUTS 1T
CODIAK WILLY 15W
TUMBLEWEED ACRES CHINOOK 12U

Embryos are exportable to North America, Australia, and EU. Embryos stored at Davis-Rairdan International. Guaranteed one (1) pregnancy per three (3) embryos purchased, if implanted by a certified technician

///////////////// CONSIGNED BY: GREENWOOD



142

3 EMBRYOS

ELECTRIC X ALLY

D.A.M. DOTS 94A ELECTRIC 31E X MOOVIN ZPOTZ ALLY 16A

SIRE RIVER HILL 12X A'MAN 94A
D.A.M. DOTS 94A ELECTRIC 31E
NOTTA 68L LIGHTNING LADY 31X

DAM MOOVIN ZPOTZ CAMARO 6X
MOOVIN ZPOTZ ALLY 16A
COLD CREEK UNITY 23U

CODIAK FIDDLER GNK 12X
PRAIRIE HILL PASSION 94P
STAR BANK LACERTA 68L
STAR BANK 54R

LEGACY TURNPIKE CRUISER 27T
STYALS LUCKY PRINCESS 9L
HWY 4 SPECKLE PARK 1R
NICOLE OF P.A.R. 23N

///////////////// **CONSIGNED BY: D.A.M. DOTS RANCH**

Embryos are exportable to USA, Australia and UK.
Embryos stored at Bow Valley Genetics. Storage and transportation is the responsibility of the purchaser.

16A is a brute cow who is continuously producing! Her genetics are as consistent and as proven as they come, as I have three generations of her offspring in my herd. She's deep bodied and has tons of capacity. This mating is sure to result in some stellar calves.



143 3 EXPORTABLE EMBRYOS | **ELECTRIC X NIRVANA**
D.A.M. DOTS 94A ELECTRIC 31E X PRAIRIE HILL NIRVANA 4N

SIRE RIVER HILL 12X A'MAN 94A
D.A.M. DOTS 94A ELECTRIC 31E
 NOTTA 68L LIGHTNING LADY 31X

DAM PRAIRIE HILL MASTERPLAN II 87L
PRAIRIE HILL NIRVANA 4N
 PRAIRIE HILL 1H

CODIAK FIDDLER GNK 12X
 PRAIRIE HILL PASSION 94P
 STAR BANK LACERTA 68L
 STAR BANK 54R

PRAIRIE HILL MASTERPLAN 97G
 PRAIRIE HILL LUCKY ROLLIE 87G
 PRAIRIE HILL NEW DECADE 123F
 DEB-RAY 1B

CONSIGNED BY: LEHR RANCHING

Guarantee one (1) pregnancy if implanted by a certified technician. All shipping costs are the responsibility of the purchaser. Stored at Bow Valley Genetics, Brooks, AB.

Electrifying power and performance embryos available here! Opportunity to acquire the first D.A.M. Dots 94A Electric 31E genetics combined with the best foundation genetics with Prairie Hill Nirvana 4N. Like Rachal and Nabob, Nirvana is a deep and broody, Prairie Hill cow with fertility, longevity and uniformity and still producing.



MAGNUM



RACHEL

144

6 EMBRYOS | **MAGNUM** X **RACHEL**

RAVEN MEADOWS MAGNUM 10N X PRAIRIE HILL RACHEL 88R

SIRE

SPRUCE LANE VENTURE 3J
RAVEN MEADOWS MAGNUM 10N
PARKLAND SPECKLE PARK 10J

DAM

PRAIRIE HILL DURMAX 93N
PRAIRIE HILL RACHEL 88R
PRAIRIE HILL DREAMAKER 88K

P.A.R. JACK DANIELS 3F
WILDWOOD LYNN 7G
DOUBLE J DUNOONS CHARLIE 54E
PARKLAND SPECKLE PARKS 7C

P.A.R. KING PIN 1K
PRAIRIE HILL FANCY PANTS 93J
PRAIRIE HILL MASTERPLAN 97G
PRAIRIE HILL LUCKY ROLLIE 87G

////////// **CONSIGNED BY: UNDERHILL SPECS**

Canada qualified only.

Buyer pays shipping from McIntosh Embryo Transfer in Ontario.

Sometimes to move forward you have to go back to what is proven. You won't find Magnum semen anywhere and here's an opportunity to acquire embryos to the power donor, 88R. A 14-year old proven donor and 16-year old proven sire makes for endless opportunity. Embryos harvested at Boviteq controlled flush station and are high Grade A.



Up to Specs Wave 12W
Magnum Daughter



Up to Specs Wile 17W
Magnum Daughter



Godlak Creek GKN 13U
Magnum Son



DEXTER



ZIPPERY

145

3 EMBRYOS |

DEXTER X ZIPPERY

COLGAN'S DEXTER D'ANGELO 01D X D.L.R. ZIPPERY 42Z

SIRE

CODIAK TYCOON CAT GNK 12Z
COLGAN'S DEXTER D'ANGELO 01D
SPOTS 'N SPROUTS 10Y

DAM

LEGACY TURNPIKE CRUISER 27T
D.L.R. ZIPPERY 42Z
D.L.R. JAZLYN 14U

LEGACY UNRIVALED 12U
SPOTS 'N SPROUTS 7W
RIVER HILL 64S URBAN COWBOY 3U
SPOTS 'N SPROUTS 12U

LEGACY ROUGHRIDER 52R
LEGACY ROMA 60R
ROB 'N SON'S FARMS 9M
D.L.R. OCEAN 4P

////////// **CONSIGNED BY: ANDCHRIS FARMS**

Embryos qualify for export to Australia, U.S. and Europe. After previously selling live animals from D.L.R. Zippery in the past two National Sales, we now offer the opportunity to purchase embryos from this outstanding outcross cow. She consistently produces quality offspring year after year and catches everyone's eye in the pasture.



SOS 7V - Sire of Lot 147a



DHB 24E - Sire of Lot 147b

Amulet Miss 9U is a larger framed cow, easy keeping, heavy coated with a shapely udder and highly fertile as an ET donor and as the mother of great calves, including a 2019 calf at side. Two daughters also sell in this sale.

The resulting ET calves will be eligible to be registered as purebred and will be Myostatin Normal, Homo Polled and Homo Black.



AMULET

146a

3 EMBRYOS

REDNECK X AMULET

YOGI GOES REDNECK 7Y X REMIN'S AMULET MISS 9U

SIRE — REDNECK WILD WILLY 2W
YOGI GOES REDNECK 7Y
 — ASPEN ACRES LINDA LOU 10L

DAM — A & W 15R
REMIN'S AMULET MISS 9U
 — REMIN'S AMULET 9P

P.A.R. MOO FASSA 03M
 PRAIRIE HILL NAUGHTY GIRL 90N
 ASPEN ACRES HORATIO 6H
 JOY OF P.A.R. 10J

BELMORAL'S SPECIAL 99H
 TRIPLE A GEM 15G
 REMIN'S MERITORIOUS 5M
 AMULET MISS 3A

146b

3 EMBRYOS

BOB X AMULET

WOLF LAKE BOB 24E X REMIN'S AMULET MISS 9U

SIRE — RAVENWORTH INVICTUS 103C
WOLF LAKE BOB 24E
 — RAVENWORTH ASPEN 118C

RAVENWORTH KLEOS 3Y
 RAVENWORTH NORTHERN STAR 101A
 RIVER HILL 12X ZAAR 7Z
 SPOTS 'N SPROUTS 31A

Two packages of three (3) Embryos, guaranteed one pregnancy if implanted by a certified ET technician within two years of purchase. Stored at Sundown Transplants, Alberta.

///////////////// **CONSIGNED BY: REMIN'S SPECKLE PARK**



TWO (2) PACKAGES OF

147

TEN (10) STRAWS

STAR BANK **LACERTA** 68L

SIRE

P.A.R. GREAT WESTERN 11F

SPOTS 'N SPROUTS JUNO 103J

SPOTS 'N SPROUTS 6A

DAM

NORALTA 9E

STAR BANK 55H

STAR BANK 43F

THUNDER 1C

PUSSY KAT II OF P.A.R. 11D

ASPEN ACRES T.N.T. 4Y

SPOTS AND SPROUTS 10X

NORALTA 2B

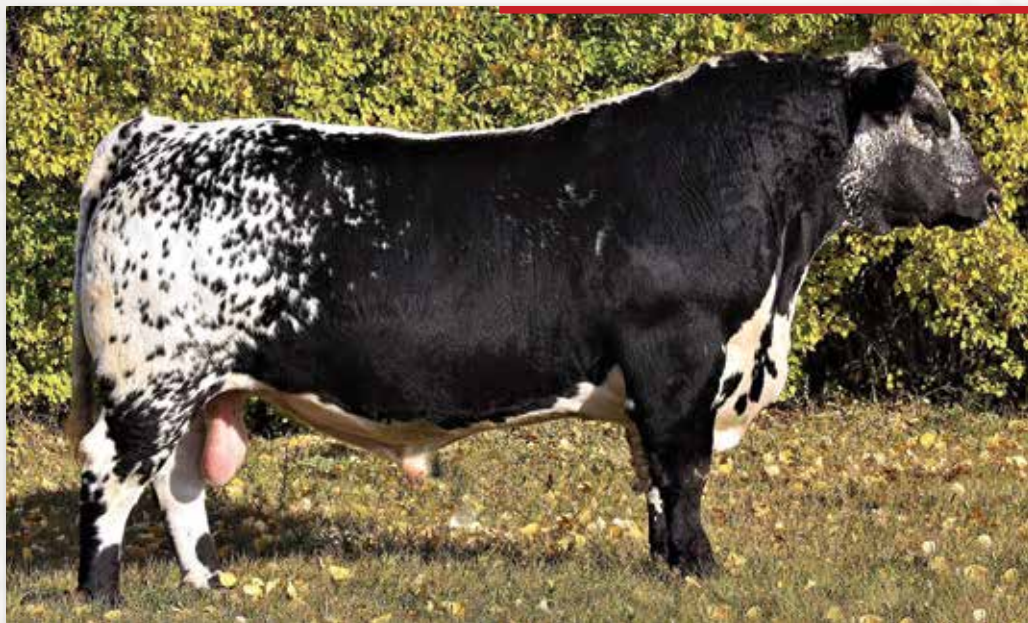
SPOTS AND SPROUTS 12A

STAR BANK 1D

LIGHTNING LADY 19C

////////////////////// **CONSIGNED BY: NOTTA RANCH**

Canada, EU, New Zealand and Australia Qualified only.



Grand Champion Farmfair 2017



Grand Champion Agribition 2017

TWO (2) PACKAGES OF

148

TEN(10)STRAWS

NOTTA 151A

CAUSE N EFFECT 309C

SIRE

SIX STAR 82U ROYAL FLESH 101Y

NOTTA 101Y BLACK CAP 151A

NOTTA 50S JANETTE 5W

DAM

SPOTS 'N SPROUTS STANDS ALONE

NOTTA 300X THETA 11A

STAR BANK THETA 42T

STAR BANK KING GEORGE 82U

STAR BANK 53R

PRAIRIE HILL JOHN WAYNE 50S

NOTTA PRETENDER 64P

STYALS LIGHTNING LADD 14P

SPOTS 'N SPROUTS 2R

SPOTS 'N SPROUTS NEFROM 101N

JANETTE OF P.A.R. 44H

CONSIGNED BY: UNDERHILL SPECS

Two exportable lots of 10 straws. First lot buyer has the option to take all 20 straws. Semen qualified for US, Brazil, NZ and Australia. Buyer pays shipping from Bow Valley, Alberta, CA or EastGen, Ontario, CA. We have been exclusively offering CNE semen through the CWA National Speckle Park Sale. You can pick out the CNE calves on pasture. Stylish heads, clean fronted, straight topped, extra performance and lots of colour typically.

CNE DNA/Scan results:

Polled, Black Coat, Myostatin Non Carrier, EMA 121cm², Rib 20mm, Rump 20mm, IMF 7.65%



TWO (2) PACKAGES OF

149 TEN (10) STRAWS | CODIAK **END TO END** GNK 802E

//////////////////// CONSIGNED BY: KFC FARMS LTD.

SIRE [CODIAK PHLEP GNK 3P
CODIAK OSCAR GNK 8S
CODIAK MATEUSA RKW 63M

DAM [CODIAK KOSMO GNK 17R
CODIAK GNK 53W
CODIAK NICE LADY RKW 25N

UPTO SPECS HOMER 24K
CODIAK HILLARY 81H
HWY. 4 SPECKLE PARK 2H
EL RANCHO NO GOTTO SHANS 02J

CODIAK MR. BLACK RKW 13M
HWY. 4 SPECKLE PARK 25J
HWY. 4 SPECKLE PARK 2H
CODIAK PRAIRIE FIRE RKW 01J

Semen qualifies for New Zealand, Australia, USA, Canada.

Here at KFC we are super excited to have added Codiak End to End 802E to our bull battery. End to End is smooth made, big footed, well balanced and is as free moving in his motion as you will find. Sired by Oscar GNK 8S, who is undoubtedly one of the most consistent Speckle Park bulls to produce both top end herd bulls and top end donor quality females.

Remember if you want to play the field, better do it End to End! End to End tested very high on his Q-Select Test TT AA CC CG Myostatin Non Carrier, Homo Polled, Homo Black

NOTES

CONSIGNORS:

444 RANCH

LOT: 137
**Debbie, Clayton
 & Dustin Spencer**
 Box 145, Odessa, SK S0G 3S0
 P: 403-880-7516
 dualjem@icloud.com

ANDCHRIS FARMS

LOTS: 130, 131 & 145
Andrew & Christine Metcalfe
 662702 Road 66 RR 3
 Ingersoll, ON N5C 3J6
 P: 519-285-3675
 C: 519-521-8761
 andchrisfarms@hotmail.com

BELMORAL FARMS

LOT: 116
Don & Glenda Bell
 Box 152, Dubuc, SK S0A 0R0
 P: 306-877-2014
 bjella@sasktel.net
Darrell & Jacqui Bell
 P: 306-728-7677

C SPECKLES

LOT: 121
Curtis & Terri McAleer
 Box 925, Unity, SK S0K 4L0
 P: 306-228-3689
 ctmcaleer@sasktel.net

CALICO CREEK SPECKLE PARKS

LOTS: 104 & 117
Landon Spokowski
 Box 1923, Yorkton, SK S3N 3X3
 P: 306-782-7228
 C: 306-621-7328
 landon_spokowski@hotmail.com
 www.calicocreekgoats.com

COLGAN'S CATTLE COMPANY

LOTS: 110a, 110b, 138 & 139
**Tony, Tammy, Colton
 & Logan Freimark**
 Saskatoon, SK
 Tony: 780-205-8229
 Tammy: 306-830-8787
 colganscattle@sasktel.net
 facebook.com/colganscattle
 www.colganscattle.com

D.A.M. DOTS RANCH

LOTS: 120, 120a, 121a & 142
Dustin & Brittany McAleer
 Box 2038, Unity, SK S0K 4L0
 C: 306-228-1498
 mcaleerd@hotmail.com

GRAND SPECS

LOTS: 133a & 133b
Gary & Karen Larsen
 Box 621, Crossfield, AB T0M 0S0
 P: 403-946-5956
 gandklarsen55@rogers.com

GREENWOOD

LOTS: 108, 109, 109a, 141a & 141b
Dalton Payne
 Box 1223
 Lloydminster, AB T9V 3B5
 780-808-6882
 dalton.payne66@gmail.com

INC CATTLE COMPANY

LOT: 107
Rob & Janice Harasymchuk
 29-602 Cartwright Street
 Saskatoon, SK S7T 0M1
 C: 306-290-7040
 C: 306-260-6200
 janiceh@maxies.ca
 robh@maxies.ca
 www.inccattleco.ca

KEVLAR SPECKLE PARK

LOTS: 134a & 134b
Kevin Larsen
 Box 1851, Crossfield, AB T0M 0S0
 P: 403-888-2860
 kmlarsencontracting@gmail.com

KFC FARMS LTD.

LOTS: DONATION, 102, 106 & 149
Kenneth Friesen
 Abbotsford, BC
 604-855-0027
 ken@fcltd.ca
John Cartwright, Farm Manager
 31433 Range Road 13
 RR 2 Site 7 Comp 52
 Didsbury, AB T0M 0X0
 403-507-3319
 john.kfcfarms@gmail.com
 www.kfcfarms.com

LEHR RANCHING

LOTS: 120a & 143
Drew Lehr
 Box 1542
 North Battleford, SK S9A 3W1
 P: 306-946-7438
 lehrranching@sasktel.net

MT BAR RANCH

LOT: 101
**Tyler, Melanie, Tell, Jayden
 & Colt Calvert**
 Box 2 Site 421 RR 2 C13
 Drayton Valley, AB T7A 2A2
 P: 587-879-4904
 P: 780-514-4026
 tyler.s.calvert@gmail.com
 mtbarz@gmail.com

MX RANCH

LOT: 125
Max Graham
 Box 38, Neilburg, SK S0M 2C0
 P: 306-823-7209
 mxranch@live.ca

NOTTA RANCH

LOTS: 140 & 147
Jason & Sara Goodfellow
 Box 307, Neilburg, SK S0M 2C0
 P: 306-893-4620
 C: 780-872-8788
 nottaspeckleparks@hotmail.com
 www.nottaranch.com

P.A.R. RANCH

LOT: 124
Dale & Lynda Chibri
 4319-35th Street
 Lloydminster, SK S9V 2G1
 P: 306-825-5554
 C: 780-205-0719
 par.ranch@sasktel.net
Roland, Faith & Torrie Chibri
 Box 12
 Lashburn, SK S0M 1H0
 P: 780-205-1668
 rchibri@rif.com
 www.parranch.ca

PRAIRIE HILL RANCH

LOTS: 128 & 129
Chip & Wanda Chibri
 Box 61, Neilburg, SK S0M 2C0
 P: 306-823-4228
 cchibri@sasktel.net
**Shawn, Aimee & Keston
 Artindale**
 Box 2969, Wainwright, AB T9W 1S8
 P: 780-806-4054
 aartindale@outlook.com

RAVENWORTH CATTLE
LOT: 115

Garry & Donna Berting
Box 134
Middle Lake, SK S0K 2X0
P: 306-367-2013
C: 306-231-7567
garry@ravenworth.com

REMIN'S SPECKLE PARK
LOTS: 135, 136, 146a & 146b

Rodney Remin
Box 773
Crossfield, AB T0M 0S0
P: 403-946-4635
remindachs@explornet.com

RIVER HILL FARM
LOTS: 111, 112 & 132

Barry & Elaine Ducherer
Cory & Katlin
Carla & Mark
Box 37
Neilburg, SK S0M 2C0
Barry: 780-205-2478
Cory: 780-870-7584
riverhillfarm@hotmail.com
www.riverhill.ca

SECOND CHANCE SPECKLE PARK
LOTS: 103 & 123

Darla Sauter
Box 34
Fairlight, SK S0G 1M0
Darla: 306-646-7794
sdsauter@sasktel.net

SPOTS 'N SPROUTS SPECKLE PARK
LOT: 105

John & Dale Herbert
Box 399
Neilburg, SK S0M 2C0
P: 306-893-4096
C: 306-893-7520
jdherbert@mcsnet.ca
www.spotsnsproutsspecklepark.com

UNDERHILL SPECS
LOTS: 113, 114, 144 & 148

Jordon, Donna
Hayden & Sterling Underhill
28 Sugarbush Place
Guelph, ON N1H 7Z2
P: 519-760-0892
uspecs@roievents.ca

UNLIMITED SPOTS
LOTS: 126 & 127

Leroy & Tracy Argue
Box 477
Marshall, SK S0M 1R0
P: 780-808-4222
ltargue@hotmail.com

WILCOX LIVESTOCK
LOTS: 118, 119 & 119a

Anthony, Ariel, Emma
& Daxson Wilcox
Box 297
Treherne, MB R0G 2V0
P: 204-526-0554
P: 204-750-1658
anthony_wilcox8@hotmail.com

WILLOW LANE LAND & CATTLE
LOT: 122

Makenzie Olson
Box 3100
Tisdale, SK CANADA S0E 1T0
P: 306-863-2556
molson@hotmail.ca

TERMS AND CONDITIONS

TERMS: The terms of the sale are cash or cheque, payable at par at the sale location. The right of property shall not pass until after settlement has been made; no invoicing on buyers in attendance unless previous arrangements have been made. Every animal sells to the highest bidder and in cases of disputes, the auctioneer's decision will be final. Announcements from the auction block will take precedence over the printed matter in the catalogue. Current exchange rates will be announced sale day. All monies are in Canadian funds.

CERTIFICATE OF REGISTRATIONS: A certificate of registry duly transferred will be furnished to the buyer for each animal after payment has been made.

HEALTH: All animals in the sale have met all necessary health requirements.

PREGNANCY INFORMATION: All serviceable age females have been pregnancy examined by an accredited veterinarian, giving an estimated length of gestation. This estimated gestation period shall be used only as a guideline to calving and is not a guarantee of actual service.

LIABILITIES: All persons attend the sale at their own risk. The seller, facility owner and sale manager assume no liability legal or otherwise, for any accidents that occur. It is understood that T Bar C Cattle Co. (2013) Ltd. is acting only as a medium between buyer and seller and is not responsible for any failure on the part of either party to live up to his obligations. Neither does T Bar C Cattle Co. (2013) Ltd. assume any financial obligations to collect or enforce collection of any monies between parties and any legal action that may in exceptional cases be taken must be between the buyer and the seller. T Bar C Cattle Co. (2013) Ltd. assumes no responsibility for any credit extended by the seller to the buyer. The buyer must look to the seller for fulfillment of all guarantees and representations made hereunder.

DELIVERY: Assistance will be given in getting your purchases home. Each animal becomes the risk of the purchaser as soon as sold.

PHONE, MAIL, WIRE BIDS: Bidders unable to attend the sale may phone, wire or mail their bids and instructions to the sale manager, auctioneer or special representatives. Bids must be received in sufficient time prior to the sale.

INSURANCE: We strongly recommend that insurance is purchased for full value.

ERRORS: All announcements at sale time, written or oral, supersede any written material in the catalogue.

Return Undeliverable
Canadian Addresses To:

T Bar C Cattle Co. (2013) Ltd.
Box 2330
Warman, Saskatchewan
S0K 4S0



Created By

*Today's
Publishing*