



Sharing
the **HERD**
FEMALE SALE

Wednesday
DECEMBER 11, 2019
GRENFELL, SASKATCHEWAN

Cow Families



BAR 5 PP BELINDA 1239D



DOUBLE BAR D DONNA 123C



DOUBLE BAR D FEATHER 147A



DOUBLE BAR D ADA 177C



DOUBLE BAR D FIESTA 207A



ANCHOR D DHARMA 404D



DOUBLE BAR D JOSIE 288B



MAF GOLDIE 140E



DOUBLE BAR D PEPSI 436E



DOUBLE BAR D COMPLETE 406A



DUTCHESS 613D

Sharing
the
HERD
FEMALE SALE



Sharing the HERD

FEMALE SALE



DOUBLE BAR D GALAXY 101X



DOUBLE BAR D SUSE 402D



DOUBLE BAR D UNIQUE 403A



DOUBLE BAR D BETTE 417A



DOUBLE BAR D PAYTON 425B



DOUBLE BAR D BRETT 454B



DOUBLE BAR D GEORGIA 486A



DOUBLE BAR D PEPSI 494E



DOUBLE BAR D ANGEL 530A



W/C MISS WERNING 724E

Welcome From Double Bar D...

Welcome to the Double Bar D Farms Fall Female event, "Sharing the Herd." We wholeheartedly welcome you to appraise and view our bred heifer offering, whether it be this catalogue, videos or best yet, drop in anytime before sale day or on sale day to see them firsthand.

A big thank you to all bidders and buyers in last year's Share the Herd Sale and of course, our annual Best of Both Worlds Bull Sale. Your continued support and confidence in our program is greatly appreciated and not taken for granted. Thank you for the interest and positive uptake of our online heifer sale to make it such a success.

This bred heifer pen is a true representation of our entire program at Double Bar D. We are pleased with the consistency of type and kind, of these matrons in the making and will be a positive addition to your program. An added bonus is that these breds, as a group, are very gentle in nature and easy to handle.

Double Bar D reserves the right to flush any of the females in the offering at our expense and buyer's convenience.

Be sure not to miss this opportunity to be a part of this offering of exciting genetics (many of which are exclusive). These include: W/C Bankroll, VCL LKC Dagger, KWA Law Maker, Sunny Valley Captain Morgan, Double Bar D Defender, Swan Lake Big Red, Double Bar D Royal 526B, Wheatland Circuit Breaker, Double Bar D Captive, MFI Jeremiah, Double Bar D Jury, Double Bar D Banker, SBSF Ironman, Starwest Pol Batman, WLSF Sador, Double Bar D Chandler, Double Bar D Rival 28D, LFS Pol Balboa, Double Bar D Spitfire and Double Bar D Bounty. Be sure to also check out the lineup of exciting services sires: W/C Bankroll, Double Bar D Bankroll 507F, Westway Scarface, Anchor D Motown, Double Bar D Batman 216E, Starwest Pol Batman and KWA Law Maker.

Thank you for your interest in our Sharing the Herd Sale and we look forward to any inquiries that you may have.

I've kept comments brief, mostly due to the fall (or lack thereof) that we've experienced. If you have any questions, please don't hesitate to call Ken and I will try to be of assistance.

These breds are from the heart of the herd and will be a positive influence at their new homes.

Regards,

Ken Dimler

DOUBLE BAR D FARMS

Box 580, Grenfell, SK S0G 2B0

Ken Dimler: 306.697.7204 kenshau@yourlink.ca

www.doublebardfarms.com



Future of Double Bar D



Double Bar D
'Farming/Ranching' Family

From The Desk At T Bar...

Welcome to Double Bar D Farms Annual "Sharing the Herd" Female Sale on Wednesday, December 11 at the farm just minutes east of Grenfell on Highway #1. Each fall, Double Bar D offers a cross section of their replacement females out of the heart of their herd... the 2019 version features seventy- five powerful bred heifers suitable for every type of program. Being a successful family operation, the Double Bar D herd is also built and developed by families.

Nothing around Double Bar D is half-baked... whether it's the large grain operation or the breeding herd, they take a lot of pride in customer satisfaction. This is exemplified by their spring bull sales...highly successful events with many repeat customers from across North America.

The sale offering is packed with power and genetic strength. It will be hard to find a group of Fullbloods such as these to select from. The exciting purebreds, (many homozygous polled) will fit any program whether you are looking for reds, blacks or blazes. Thick, broody, genetically diverse... many of these females are weeks away from laying down a coupon and saving you some tax.

Plan to be with us at Double Bar D for one of the feature sales in the Simmental breed and add a female or two to your front pasture. Feel free to stop by the farm prior the sale for a preview of the offering or don't hesitate to give Ken a call... he likes to visit cattle. Most importantly ... be on the front row December 11th.

If we at T Bar C may be of assistance, prior to or sale day, please contact any of the T Bar team and we will be pleased to offer our professional services.

Chris Poley

T BAR C CATTLE CO. LTD. **Box 2330, Warman, SK S0K 4S0**

O: 306.933.4200
info@tbarc.com

F: 306.934.0744
www.tbarc.com



Chris Poley
306.220.5006



Shane Michelson
403.363.9973



Ben Wright
519.374.3335



INFORMATION

Sale Day

AUCTIONEER:

Chris Poley 306-220-5006

SALES STAFF:Shane Michelson 403-363-9973
Ben Wright 519-374-3335**SALE DAY PHONES:**Sale Barn 306-697-3582
Chris Poley 306-220-5006
Shane Michelson 403-363-9973
Ben Wright 519-374-3335**DOUBLE BAR D PHONES:**Ken Dimler 306-697-7204
Richard Dimler 306-697-7298**SALES MANAGEMENT:**T Bar C Cattle Co. Ltd. 306-933-4200
Chris Poley 306-220-5006
Shane Michelson 403-363-9973
Ben Wright 519-374-3335**MARKETING AGENTS:**

Danny Skeels 403-783-1217

First Class MarketingJon Karsin 204-870-0329
Darnell Fornwald 403-795-8030**Bohrson Marketing Services**Matt Criddle 306-539-6934
Darryl Snider 403-803-6532
Scott Bohrson 403-370-3010**AGENDA:****Tuesday, December 10, 2019**

All day viewing of sale cattle, coffee and donuts

Wednesday, December 11, 20199:00 am Cattle penned for sale
12:00 pm Complimentary Lunch
1:00 pm Double Bar D "Sharing The Herd" Fall Female Sale**SALE ACCOMMODATIONS:**

Ramada Emerald Park, Regina	306-525-5300
Homestead Motel, Grenfell	306-607-2846
Whitewood Inn, Whitewood	306-735-2651
Sigma Inn & Suites, Melville	306-728-4688
Bear Claw Casino & Hotel, Carlyle	306-577-4588
Canalta Hotel, Moosomin	866-500-4938
Best Western, Moosomin	306-435-4700

FINANCING TERMS:

Terms are available on the females selling OAC and upon completion of a financial contract. Please contact Richard Dimler or Chris Poley for more details and pre-approval.

SALE DAY INSURANCE:

Alameda Agencies	306-489-2258 or 306-483-7311
Bonnie Thompson	

CATALOGUE PRODUCTION by Today's Publishing Inc.**PHOTOGRAPHY:**

Top Stock Magazine - Katie Songer

VIDEOS & ONLINE BIDDING:

DLMS



VIEW THE CATALOGUE AND VIDEOS ONLINE
WWW.BUYAGRO.COM

VIDEOS OF EVERY LOT ARE AVAILABLE ON OUR WEBSITE...

WWW.DOUBLEBARDFARMS.COM

Offering
75 FEMALES

- RED SIMMENTAL
- BLACK SIMMENTAL

- FLECKVIEH
- BRED FEMALES





DOUBLE BAR D FARMS
GRENFELL, SASKATCHEWAN

Sharing the HERD

FEMALE SALE

Wednesday
DECEMBER 11, 2019
GRENFELL, SASKATCHEWAN

Terms & Conditions

TERMS: The terms of the sale are cash or cheque, payable at par at the sale location. The right of property shall not pass until after settlement has been made; no invoicing on buyers in attendance unless previous arrangements have been made. Every animal sells to the highest bidder and in cases of disputes, the auctioneer's decision will be final. Announcements from the auction block will take precedence over the printed matter in the catalogue. Current exchange rates will be announced sale day. All monies are in Canadian funds.

Double Bar D reserves the right to flush any of the females in the offering at the seller's expense and buyer's convenience.

CERTIFICATE OF REGISTRATION: Each animal will carry papers issued by the Canadian Simmental Association. A certificate of registry duly transferred will be furnished to the buyer for each animal after payment has been made.

HEALTH: All animals in the sale have met all necessary health requirements.

GUARANTEE: Each animal becomes the purchaser's risk immediately after the animal is sold. All animals in this sale will be sold under the terms and guarantees set forth by the Canadian Simmental Association with regards to health, freedom from defects and from both reproductive and specific genetic unsoundness.

PREGNANCY INFORMATION: All serviceable age females have been pregnancy examined by an accredited veterinarian, giving an estimated length of gestation. This estimated gestation period shall be used only as a guideline to calving and is not a guarantee of actual service.

LIABILITIES: All persons attend the sale at their own risk. The seller, facility owner and sale manager assume no liability, legal or otherwise, for any accidents that occur. It is understood that T Bar C Cattle Co. (2013) Ltd. is acting only as a medium between buyer and seller and is not responsible for any failure on the part of either party to live up to his obligations. Neither does T Bar C Cattle Co. (2013) Ltd. assume any financial obligations to collect or enforce collection of any monies between parties and any legal action that may, in exceptional cases, be taken must be between the buyer and the seller. T Bar C Cattle Co. (2013) Ltd. assumes no responsibility for any credit extended by the seller to the buyer. The buyer must look to the seller for fulfillment of all guarantees and representations made hereunder.

DELIVERY: Assistance will be given in getting your purchases home. Each animal becomes the risk of the purchaser as soon as sold.

PHONE, MAIL, WIRE BIDS: Bidders unable to attend the sale may phone, wire or mail their bids and instructions to the sale manager, auctioneer or special representatives. Bids must be received in sufficient time prior to the sale.

INSURANCE : We strongly recommend that insurance is purchased for full value.

ERRORS: All announcements at sale time, written or oral, supersede any written material in the catalogue.

Josie



LOT
1

LOT
1

DOUBLE BAR D *Josie* 201E

• FULL BLOOD • POLLED • RLD 201E • P1237521 • MAY 22, 2017 • BW: 82 LBS.

DOUBLE BAR D SPITFIRE 20X
STARWEST POL BATMAN
FGAF SHEENA 843Y

MFI FOUNDATION 7094
DOUBLE BAR D JOSIE 16Y
DOUBLE BAR D JOSIE 507W

DOUBLE BAR D EVEREST 103U
VIRGINIA MS TREASURE 4T
ALLM COLOSSAL 25U
ANCHOR D SHEENA 138S
ANCHOR "T" METRO 4E
MFI PETRA 3059
DOUBLE BAR D ADONIS 603N
MRLN JOSCELINE

CE	BW	WW	YW	MILK	MCE	MWWT
7.7	3.8	70.8	98.9	29.2	4.6	64.6

POLLED

Josie 201E is most definitely a power bred and made Batman daughter. She possesses an abundance of volume and substance with expectant good udder quality. The guess work has been eliminated on the bottom side of her pedigree, which includes such greats as Metro, Petra, Adonis 603N and MRLN Josceline.

Exposed to Anchor D Motown 865E from March 26 to June 4, 2019.



Starwest POL Batman - Sire

DOUBLE BAR D

Klaudia

LOT

2

222E

- FULL BLOOD
- RLD 222E
- JUN. 01, 2017
- HORNED
- 1238237
- BW: 83 LBS.

CE	BW	WW	YW
5.5	5.8	72.4	105.1
MILK	MCE	MWWT	
33.9	3.2	70.1	

LOT
2

IPU ROMANO 90X
SBSF IRONMAN 29B
WXR MS PASO 26P

CHAMPS ROMANO
IPU MS LEGEND 42P
GEN LAREDO 519L
PILLAR BAMBI 6L

HOCKENHULL MAGNUM
DOUBLE BAR D KLAUDIA 179A
DOUBLE BAR D KLAUDIA 80T

OVERHALL HIVY
REGINA
DOUBLE BAR D EVEREST 4R
DOUBLE BAR D KLAUDETTE

Power, performance and mass best describes Klaudia 222E. A big ribbed Ironman daughter going back to Hockenhull Magnum and Klaudia 80T on the maternal side. This brood cow in the making will not be missed sale day as she is impressive at every angle. Exposed to Starwest Pol Batman 243B from March 26 to May 29, 2019.

DOUBLE BAR D

Adora

LOT

3

265E

- FULL BLOOD
- RLD 265E
- JUN. 26, 2017
- HORNED
- 1238276
- BW: 91 LBS.

CE	BW	WW	YW
3.9	6.3	76.4	113.5
MILK	MCE	MWWT	
33.5	3.0	71.7	

LOT
3

IPU ROMANO 90X
SBSF IRONMAN 29B
WXR MS PASO 26P

CHAMPS ROMANO
IPU MS LEGEND 42P
GEN LAREDO 519L
PILLAR BAMBI 6L

RV NICKELBACK 6U
DOUBLE BAR D ADORA 159A
DOUBLE BAR D ADORA 224S

GPCC HAFKENBERG 8F
MISS JOHANNAH R24
BHR DRACO SA 628N
SALMON ARM ADORA

Adora 265E combines power packed phenotype and pedigree. Dark red with great shape and structure. Going back to the powerful donor, Adora 224S on the bottom side. Exposed to Double Bar D Batman 216E from March 26 to June 20, 2019.

LOT
4

DOUBLE BAR D

*Pearl*LOT
4

123F

- FULL BLOOD
- RLD 123F
- FEB. 12, 2018
- HORNED
- 1247943
- BW: 80 LBS.

CE	BW	WW	YW
6.6	3.6	61.6	89.3
MILK	MCE	MWWT	
27.1	2.8	57.9	

DOUBLE BAR D CHESAPEAKE
DOUBLE BAR D CHANDLER 143
DOUBLE BAR D KLAUDIA 80T

KN SHAWACRES JAHARI 50L
MFI HELGA 4021
DOUBLE BAR D EVEREST 4R
DOUBLE BAR D KLAUDETTE

WLSF KAUN
DOUBLE BAR D PEARL 211A
WLSF PEARL

WLSF KAUNLO
WLSF ALIDAHA
WLSF HALDOR
WLSF PEGSLY

Pearl 123F is a very well balanced, complete female that profiles very nice. Dam is a very productive and feminine Wyecrest bred cow.
Exposed to Starwest Pol Batman 243B from March 26 to May 29, 2019.

LOT
5

DOUBLE BAR D

*Treat*LOT
5

154F

- FULL BLOOD
- RLD 154F
- FEB. 22, 2018
- HORNED
- 1247974
- BW: 80 LBS.

CE	BW	WW	YW
6.7	3.5	64.1	92.6
MILK	MCE	MWWT	
30.9	1.2	16.5	

DOUBLE BAR D CHESAPEAKE
DOUBLE BAR D CHANDLER 143
DOUBLE BAR D KLAUDIA 80T

KN SHAWACRES JAHARI 50L
MFI HELGA 4021
DOUBLE BAR D EVEREST 4R
DOUBLE BAR D KLAUDETTE

MFI JEREMIAH 9022
DOUBLE BAR D TREAT 171A
VIRGINIA MS TREASURE 4T

GIBBONS JEREMIAH
MFI PETRA 2093
KN VIRGINIAS RED MARCIANO FF
VIRGINIA'S MS WEST PATTY

We are very pleased with Chandler's consistency in breeding on the male and female side. Treat 154F is definitely no exception and is no surprise as her dam, 171A, is a Juggernaut x Virginia Ms Treasure 4T combination.
Exposed to Starwest Pol Batman 243B from March 26 to May 29, 2019.

LOT
6

DOUBLE BAR D *Luna* 188F

• FULL BLOOD • HORNEDED • RLD 188F • 1248202 • MAR. 14, 2018 • BW: 85 LBS.

DOUBLE BAR D CHESAPEAKE
DOUBLE BAR D CHANDLER 143
DOUBLE BAR D KLAUDIA 80T

KN ANCHOR "T" LEGEND 7H
DOUBLE BAR D LYNNEA 692X
DOUBLE BAR D LYNNEA 13S

KN SHAWACRES JAHARI 50L
MFI HELGA 4021
DOUBLE BAR D EVEREST 4R
DOUBLE BAR D KLAUDETTE
KN ANCHOR "T" METRO 4E
ANCHOR "T" HELGA 10Y
KN EMIL
DOUBLE BAR D LYNN 89M

CE	BW	WW	YW	MILK	MCE	MWWT
8.0	3.1	64.3	94.4	31.0	2.5	63.2

A younger Chandler daughter with great rib shape on a good structure.
Exposed to Double Bar D Batman 216E from March 26 to June 20, 2019.



LOT
6

LOT
7

DOUBLE BAR D *Wren* 200F

• FULL BLOOD • HORNEDED • RLD 200F • 1248210 • MAR. 30, 2018 • BW: 85 LBS.

DOUBLE BAR D CHESAPEAKE
DOUBLE BAR D CHANDLER 143
DOUBLE BAR D KLAUDIA 80T

KN BRENAIR PARK HAFKE
DOUBLE BAR D RENATA 183Z
MFI RENATA 7086

KN SHAWACRES JAHARI 50L
MFI HELGA 4021
DOUBLE BAR D EVEREST 4R
DOUBLE BAR D KLAUDETTE
HAFKE
KYKSO DIDAKA
MFI WHISTLER 47L
MFI RENATA 3012

CE	BW	WW	YW	MILK	MCE	MWWT
5.4	4.0	3.9	94.3	31.3	2.2	63.3

Another young Chandler daughter but be sure not to discount her youth as she is very complete in her composition with an outcross pedigree on the maternal side.

Exposed to Double Bar D Batman 216E from March 26 to June 20, 2019.



LOT
7

LOT
8

DOUBLE BAR D *Finley* 193F

• FULL BLOOD • HORNEDED • RLD 193F • 1248205 • MAR. 20, 2018 • BW: 80 LBS.

DOUBLE BAR D CHESAPEAKE
DOUBLE BAR D CHANDLER 143
DOUBLE BAR D KLAUDIA 80T

MFI JEREMIAH 9022
DOUBLE BAR D FENELLA 78B
DOUBLE BAR D FENELLA 213Y

KN SHAWACRES JAHARI 50L
MFI HELGA 4021
DOUBLE BAR D EVEREST 4R
DOUBLE BAR D KLAUDETTE
GIBBONS JEREMIAH
MFI PETRA 2093
MFI JAHARI 8091
DOUBLE BAR D FENELLA 179U

CE	BW	WW	YW	MILK	MCE	MWWT
6.7	3.1	60.0	87.4	30.8	-0.2	60.8

Very soft made, feminine female with an exceptional pedigree with Juggernaut and Fenella on the bottomside.

Exposed to Starwest Pol Batman 243B from March 26 to May 29, 2019.



LOT
8



DOUBLE BAR D

Lolita

LOT
9

259E

- FULL BLOOD
- RLD 259E
- JUN. 18, 2017
- HORNED
- 1238271
- BW: 86 LBS.

CE	BW	WW	YW
3.3	5.1	70.5	101.0
MILK	MCE	MWWT	
30.0	0.9	65.3	

MFI JEREMIAH 9022
DOUBLE BAR D JURY 156B
DOUBLE BAR D FEATHER 117L

GIBBONS JEREMIAH
MFI PETRA 2093
KN BAR NONE MAXIMIZER
BAR NONE FENELLA

DOUBLE BAR D SPITFIRE 20X
DOUBLE BAR D LOLITA 23Z
MFI LOLITA 40M

DOUBLE BAR D EVEREST 103U
VIRGINIA MS TREASURE 4T
WESTDRUMS ANDREW
ANCHOR "T" LOLITA 22Z

A great Jury daughter that is dark red and has good rib shape and hip structure while maintaining a good degree of femininity. Her dam, 23Z, is a productive Spitfire daughter going back to Westdrums Andrew.
Exposed to Starwest Pol Batman 243B from March 26 to May 29, 2019.



LOT
10

DOUBLE BAR D *Sassy* **233E**

- FULL BLOOD
- HORNED
- RLD 233E
- 1238245
- JUN. 05, 2017
- BW: 85 LBS.

MFI JEREMIAH 9022
DOUBLE BAR D JURY 156B
DOUBLE BAR D FEATHER 117L

GIBBONS JEREMIAH
MFI PETRA 2093
KN BAR NONE MAXIMIZER
BAR NONE FENELLA
SOLWAY ADONIS
BAR NONE BONNIE LASS
KN DOUBLE BAR MAKE M PLLED
DOUBLE BAR D SUZETTE

DOUBLE BAR D ADONIS 603N
DOUBLE BAR D SASSY 72Y
DOUBLE BAR D SUZE 121U

CE	BW	WW	YW	MILK	MCE	MWWT
3.8	4.5	62.1	86.8	35.7	1.2	66.8

Long and smooth with a big hip best describes Sassy 233E. Here's one that has the potential to raise your next herd bull, considering Adonis 603N and Suzette are on the bottom side.

Exposed to Starwest Pol Batman 243B from March 26 to May 29, 2019.



LOT
11

DOUBLE BAR D *Jojo* **202E**

- FULL BLOOD
- HORNED
- RLD 202E
- 1237526
- MAY 22, 2017
- BW: 80 LBS.

MFI JEREMIAH 9022
DOUBLE BAR D JURY 156B
DOUBLE BAR D FEATHER 117L

GIBBONS JEREMIAH
MFI PETRA 2093
KN BAR NONE MAXIMIZER
BAR NONE FENELLA
GPCC HAFKENBERG 8F
MISS JOHANNAH R24
KN DOUBLE BAR D LINCOLN
MRLN JOSCELINE

RV NICKELBACK 6U
DOUBLE BAR D JOSIE 152B
DOUBLE BAR D JOCELINE

CE	BW	WW	YW	MILK	MCE	MWWT
3.6	4.8	64.7	93.2	35.9	1.4	68.3

Another dark red Jury daughter that exhibits power and volume.
Exposed to Starwest Pol Batman 243B from March 26 to May 29, 2019.

DOUBLE BAR D

*Feather*LOT
12

49F

- FULL BLOOD
- RLD 49F
- JAN. 27, 2018
- HORNED
- 1247534
- BW: 85 LBS.

CE	BW	WW	YW
5.4	5.2	71.0	100.2
MILK	MCE	MWWT	
35.0	2.2	70.5	

LOT
12

IPU ROMANO 90X
SBSF IRONMAN 29B
WXR MS PASO 26P

CHAMPS ROMANO
IPU MS LEGEND 42P
CEN LAREDO 519L
PILLAR BAMBI 6L

MFI JEREMIAH 9022
DOUBLE BAR D FEATHER 147A
DOUBLE BAR D FEATHER 43W

GIBBONS JEREMIAH
MFI PETRA 2093
FGAF MASAIL 307S
DOUBLE BAR D FEATHER 198T

A very complete, well balanced Ironman daughter whose dam is a full sibling to the \$130,000 Banker bull that sold to Virginia Ranch. Feather 49F is setting up a very nice udder and has the potential and probability to be a front end cow with the built in longevity of the Fenella/Feather cow families. Exposed to Starwest Pol Batman 243B from March 26 to May 29, 2019.

DOUBLE BAR D

*Adora*LOT
13

131F

- FULL BLOOD
- RLD 131F
- FEB. 16, 2018
- HORNED
- 1248191
- BW: 75 LBS.

CE	BW	WW	YW
7.0	3.7	69.5	102.8
MILK	MCE	MWWT	
35.2	4.9	70.0	

LOT
13

IPU ROMANO 90X
SBSF IRONMAN 29B
WXR MS PASO 26P

CHAMPS ROMANO
IPU MS LEGEND 42P
CEN LAREDO 519L
PILLAR BAMBI 6L

RV NICKELBACK 6U
DOUBLE BAR D ADORA 162A
DOUBLE BAR D ADORA 224S

GPCC HAFKENBERG 8F
MISS JOHANNAH R24
BHR DRACO SA 628N
SALMON ARM ADORA

Adora 131F is another power packed bred heifer in both type and pedigree. Moderate in stature but very attractive. Exposed to Double Bar D Batman 216E from March 26 to June 20, 2019.

LOT 14 & 15 Two Rival 28D daughters that happen to share the same pedigree, as their dams are full siblings. Both 05F and 102F have good shape, balance and thickness.



LOT
14

LOT
14

DOUBLE BAR D *Eva* 05F

• FULL BLOOD • HORNEDED • RLD 05F • 1247428 • JAN. 09, 2018 • BW: 75 LBS.

DOUBLE BAR D RIVAL 201A	KN MRLN ROGAR
DOUBLE BAR D RIVAL 28D	DOUBLE BAR D JOCELINE
DOUBLE BAR D LYNN 6Y	DOUBLE BAR D EXODUS 104U
	DOUBLE BAR D LYNN 184W
DOUBLE BAR D METROPOLIS	KN SHAWACRES JAHARI 50L
DOUBLE BAR D EVA 224A	MFI PETRA 3105
DOUBLE BAR D EVA 338W	MFI LEGACY 6239
	MFL EVANGELISTA 32E

CE	BW	WW	YW	MILK	MCE	MWWT
3.8	4.7	67.2	96.7	33.2	3.1	66.8

Exposed to Double Bar D Batman 216E from March 26 to June 20, 2019.



LOT
15

LOT
15

DOUBLE BAR D *River* 102F

• FULL BLOOD • HORNEDED • RLD 102F • 1247862 • FEB. 05, 2018 • BW: 85 LBS.

DOUBLE BAR D RIVAL 201A	KN MRLN ROGAR
DOUBLE BAR D RIVAL 28D	DOUBLE BAR D JOCELINE
DOUBLE BAR D LYNN 6Y	DOUBLE BAR D EXODUS 104U
	DOUBLE BAR D LYNN 184W
DOUBLE BAR D METROPOLIS	KN SHAWACRES JAHARI 50L
DOUBLE BAR D 225A	MFI PETRA 3105
DOUBLE BAR D EVA 338W	MFI LEGACY 6239
	MFL EVANGELISTA 32E

CE	BW	WW	YW	MILK	MCE	MWWT
3.5	4.8	67.8	97.7	34.3	2.5	68.2

Exposed to Double Bar D Batman 216E from March 26 to June 20, 2019.



LOT
16

LOT
16

DOUBLE BAR D *Petra* 28F

• FULL BLOOD • HORNEDED • RLD 28F • 1247445 • JAN. 21, 2018 • BW: 78 LBS.

KN EXODUS	KN EISENHERZ
DOUBLE BAR D EXODUS 104U	ROBE
DORA LEE CELINE FF22P	KN ABR SIR ARNOLDS IMAGE
	DORA LEE CLAUDIA
SBSF IRONMAN 29B	IPU ROMANO 90X
DOUBLE BAR D PETRA 13D	WXR MS PASO 26P
DOUBLE BAR D PETRA 155A	MFL UNIVERSE 28U
	MFI PETRA 4077

CE	BW	WW	YW	MILK	MCE	MWWT
3.3	4.8	67.0	95.6	33.3	2.8	66.8

Dark red, well balanced with a wide top. Maternal side is going back to a flush mate of Double Bar D United.

Exposed to Double Bar D Batman 216E from March 26 to June 20, 2019.

LOT
17

DOUBLE BAR D *Bess* 87F

• FULL BLOOD • POLLED • RLD 87F • P1247765 • FEB. 02, 2018 • BW: 100 LBS.

MFI JEREMIAH 9022
DOUBLE BAR D BANKER
DOUBLE BAR D FEATHER 43W

PROSTOCK EDISON
DOUBLE BAR D 907X
DOUBLE BAR D MS STEWARD

GIBBONS JEREMIAH
MFI PETRA 2093
FGAF MASAIL 307S
DOUBLE BAR D FEATHER 198T
KN EXODUS
WOODRINGSMSFAITHFUL 113H
KN BAR NONE MAXIMIZER
RICH MC MS STEWARD 20M

CE	BW	WW	YW	MILK	MCE	MWWT
2.4	6.6	67.3	96.4	40.2	0.2	73.9

Polled, dark red Banker daughter with length of spine and good spring of rib.
Exposed to Double Bar D Batman 216E from March 26 to June 20, 2019.



LOT
18

DOUBLE BAR D *Peg* 103F

• FULL BLOOD • HORNED • RLD 103F • 1247865 • FEB. 05, 2018 • BW: 80 LBS.

MFI JEREMIAH 9022
DOUBLE BAR D BANKER
DOUBLE BAR D FEATHER 43W

WLSF HALDOR
WLSF PEGADOR
WLSF PEGEMBU

GIBBONS JEREMIAH
MFI PETRA 2093
FGAF MASAIL 307S
DOUBLE BAR D FEATHER 198T
SALMON ARM HAYES 9M
WLSF VERDORA
KN BULEMBU
WLSF PEGNER

CE	BW	WW	YW	MILK	MCE	MWWT
4.2	4.3	58.9	83.7	33.2	0.7	62.7

Dark red, deep ribbed Banker daughter whose dam is a very good Wyecrest, full South African cow.
Exposed to Starwest Pol Batman 243B from March 26 to May 29, 2019.



LOT
19

DOUBLE BAR D *Barbl* 76F

• FULL BLOOD • POLLED • RLD 76F • P1247812 • FEB. 01, 2018 • BW: 80 LBS.

KN DAYTON'S POL NEUMANN
LFS POL BALBOA 40U
RRV NATALIE

SBSF IRONMAN 29B
DOUBLE BAR D BARBL 93D
DOUBLE BAR D BARBL 92W

KN BHR DOORN G629E
DAYTON'S POLLED MARTHA
KN IPU BRONSON 19K
BROCK MISS LATEEFA
IPU ROMANO 90X
WXR MS PASO 26P
DOUBLE BAR D EVEREST 4R
MRLN BARBL

CE	BW	WW	YW	MILK	MCE	MWWT
5.0	4.4	58.6	80.6	33.4	2.1	62.7

Polled Balboa daughter going back to the great MRLN Barbl Cow. 76F is dark red with extra pigment and a bunch of upside potential.
Exposed to Starwest Pol Batman 243B from March 26 to May 29, 2019.



LOT
20DOUBLE BAR D *Jess* 10F

• FULL BLOOD • HORNED • RLD 10F • 1247814 • JAN. 14, 2018 • BW: 82 LBS.

DOUBLE BAR D EVEREST 103U
DOUBLE BAR D SPITFIRE 20X
VIRGINIA MS TREASURE 4TWLSF KAIMAT 930X
DOUBLE BAR D JESS 109C
DOUBLE BAR D JESS 52ADOUBLE BAR D EVEREST 4R
DOUBLE BAR D JERICO 5L
KN VIRGINIAS RED MARCIANO FF
VIRGINIA'S MS WEST PATTYWLSF KAUNLO
SALMON ARM SOBI 29R
BEL SCHNAPPS 05Y
4124P

CE	BW	WW	YW	MILK	MCE	MWWT
3.4	4.8	66.4	97.8	29.4	2.7	62.6

Jess 10F is a moderate, soft made Spitfire daughter that is dark red with a very strong top.

Exposed to Double Bar D Batman 216E from March 26 to June 20, 2019.

LOT
21DOUBLE BAR D *Gypsy* 70F

• FULL BLOOD • POLLED • RLD 70F • P1247571 • JAN. 30, 2018 • BW: 95 LBS.

DOUBLE BAR D BAXTER 606Z
DOUBLE BAR D BOUNTY 176B
DOUBLE BAR D JOCELINEDOUBLE BAR D SPITFIRE 20X
DOUBLE BAR D GYPSY 45Z
DOUBLE BAR D GYPSY 238SLFS POL BALBOA 40U
MFI PETRA 4077
KN DOUBLE BAR D LINCOLN
MRLN JOSCELINEDOUBLE BAR D EVEREST 103U
VIRGINIA MS TREASURE 4T
KN DOUBLE BAR MAKE M PLED
SPJ GYPSY 166

CE	BW	WW	YW	MILK	MCE	MWWT
4.2	4.3	58.9	83.7	33.2	0.7	62.7

Polled Bounty daughter going back to Treasure 4T and Gypsy (Petra) on the bottom side. Gypsy 70F is long sided and big hiped.

Exposed to Starwest Pol Batman 243B from March 26 to May 29, 2019.

LOT
22DOUBLE BAR D *Shanty* 194F

• FULL BLOOD • HORNED • RLD 194F • 1285857 • MAR. 24, 2018 • BW: 80 LBS.

DOUBLE BAR D BAXTER 606Z
DOUBLE BAR D BOUNTY 176B
DOUBLE BAR D JOCELINEWLSF KAIMAT 930X
DOUBLE BAR D 141B
GIBBONS JELLOLFS POL BALBOA 40U
MFI PETRA 4077
KN DOUBLE BAR D LINCOLN
MRLN JOSCELINEWLSF KAUNLO
SALMON ARM SOBI 29R
KN KLONDIKE ARNIE GNM 250Z
GIBBONS JUNO

CE	BW	WW	YW	MILK	MCE	MWWT
4.0	4.1	55.1	80.3	33.4	4.4	61.0

Moderate and deep flanked with a bunch of upside.

Exposed to Double Bar D Batman 216E from March 26 to June 20, 2019.

Sador has been our calving ease specialist of the Fleckvieh side for many years. Calving ease accompanied with excellent phenotype and maternal traits, such as udder quality and doability, to mention a couple.



LOT 23 **DOUBLE BAR D** *Lucy 133F*

• FULL BLOOD • HORNED • RLD 133F • 1247952 • FEB. 16, 2018 • BW: 80 LBS.

WLSF HALDOR	SALMON ARM HAYES 9M
WLSF SADOR	WLSF VERDORA
SALMON ARM SARABELLE 9S	SALMON ARM SAMSON 113P
	SALMON ARM HANNABELLE 34P
FGAF MASAIL 307S	KN ANCHOR "T" LEGEND 7H
DOUBLE BAR D LUCY 19U	MFI ZAILA 51M
DOUBLE BAR D LUSIOUS 184S	KN DOUBLE BARD MAKE M PLED
	DOUBLE BAR D LUCY 25N

CE	BW	WW	YW	MILK	MCE	MWWT
7.2	3.1	59.6	81.9	27.2	2.4	57.0

Dam, 19U, is an excellent Masail daughter still in production.
Exposed to Double Bar D Batman 216E from March 26 to June 20, 2019.



LOT 24 **DOUBLE BAR D** *Robin 169F*

• FULL BLOOD • HORNED • RLD 169F • 1247983 • FEB. 27, 2018 • BW: 85 LBS.

WLSF HALDOR	SALMON ARM HAYES 9M
WLSF SADOR	WLSF VERDORA
SALMON ARM SARABELLE 9S	SALMON ARM SAMSON 113P
	SALMON ARM HANNABELLE 34P
LFS POL BALBOA 40U	KN DAYTON'S POL NEUMANN
DOUBLE BAR D ROBIN 242A	RRV NATALIE
DOUBLE BAR D ROBIN 333Y	MFI JEREMIAH 9022
	MFI MISS ROBIN GER 6119

CE	BW	WW	YW	MILK	MCE	MWWT
6.0	3.6	60.6	85.7	32.0	1.7	62.3

Balboa and Juggernaut on the bottom side.
Exposed to Double Bar D Batman 216E March 26 to June 20, 2019.



LOT 25 **DOUBLE BAR D** *Feather 177F*

• FULL BLOOD • HORNED • RLD 197F • 1248207 • MAR. 24, 2018 • BW: 75 LBS.

WLSF HALDOR	SALMON ARM HAYES 9M
WLSF SADOR	WLSF VERDORA
SALMON ARM SARABELLE 9S	SALMON ARM SAMSON 113P
	SALMON ARM HANNABELLE 34P
MFI JEREMIAH 9022	GIBBONS JEREMIAH
DOUBLE BAR D FEATHER 177B	MFI PETRA 2093
DOUBLE BAR D FEATHER 117L	KN BAR NONE MAXIMIZER
	BAR NONE FENELLA

CE	BW	WW	YW	MILK	MCE	MWWT
7.9	2.8	59.2	85.8	34.0	26	63.6

Dam is a full sibling to Double Bar D Jury.
Exposed to Double Bar D Batman 216E March 26 to June 20, 2019.



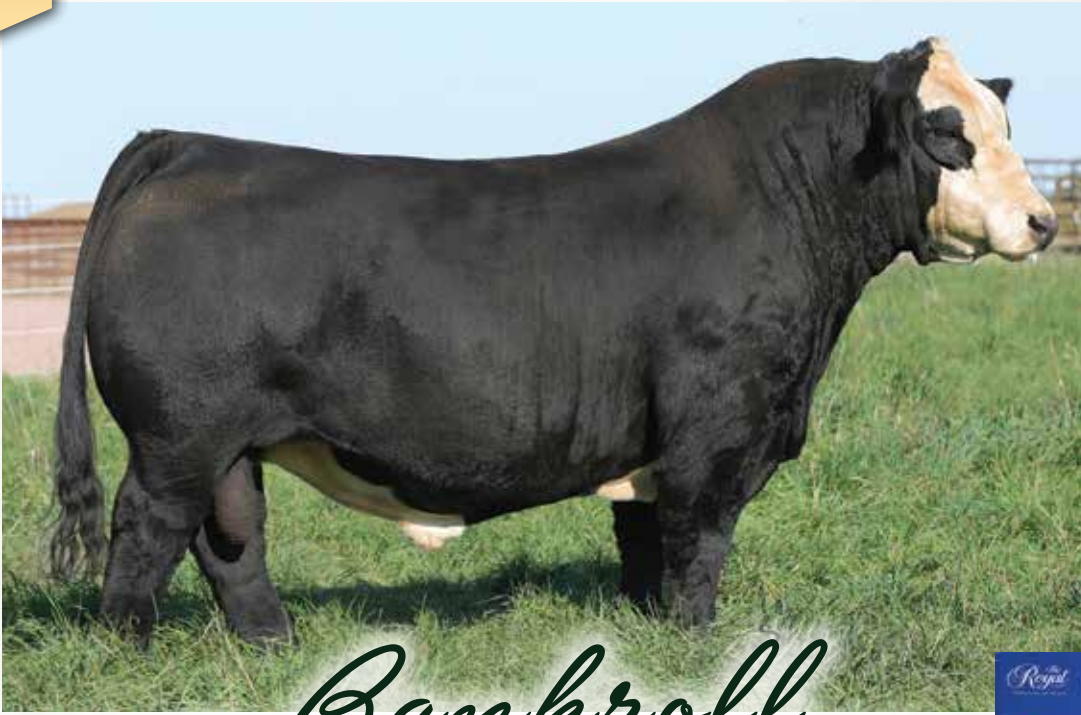
LOT 26 **DOUBLE BAR D** *Helga 166F*

• FULL BLOOD • HORNED • RLD 166F • 1247979 • FEB. 26, 2018 • BW: 85 LBS.

WLSF HALDOR	SALMON ARM HAYES 9M
WLSF SADOR	WLSF VERDORA
SALMON ARM SARABELLE 9S	SALMON ARM SAMSON 113P
	SALMON ARM HANNABELLE 34P
LFS POL BALBOA 40U	KN DAYTON'S POL NEUMANN
DOUBLE BAR D HELGA 337Y	RRV NATALIE
ANCHOR "T" AMANDA 63L	ANCHOR "T" SUPREME 39H
	ANCHOR "T" ALAPIS 25J

CE	BW	WW	YW	MILK	MCE	MWWT
8.4	1.9	52.8	76.2	34.2	4.2	60.6

Dark red, smooth made and correct. Note: her granddam is the great Anchor "T" Amanda 63L, dam of Double Bar D Notorious of Virginia Ranch.
Exposed to Starwest Pol Batman 243B from March 26 to May 29, 2019.



W/C **Bankroll** 811D

Sire: W/C LOADED UP 1119Y

Dam: MISS WERNING KP 8543U

CE: 15.5 BW: 0.3 WW: 65.8 YW: 90.3 MILK: 24.6 MCE: 8.1 MWWT: 57.5

• RLD 409G won reserve Heifer Calf Champion in 2019 Olds Fall Classic. Owned by Black Gold Simmental

• 2019 Werning Cattle Co. Sale high selling Bankroll son. Group of three Bankroll bulls won first in class in the Purebred Pen of 3 Bulls Show at the 2019 National Western Stock Show in Denver.



Double Bar D Brett 536F
Bankroll Daughter
National Heifer Calf Champion 2018
Junior Champion Heifer Brandon AgEx 2019
Owned with Dusty Rose



Double Bar D Annuity 635F
High selling bull in 2019.
Sold to Bruce Cuddy, NC



Bankroll Daughter
\$164,000 High Seller for RJ

Now into the second calf crop of W/C Bankroll, his calves continue to exceed extremely high expectations. His sons and daughters are true curve benders with low birth weights and exceptional performance through weaning and yearling.

His females are angular yet possess exceptional mass with a maternal look. His bull calves are powerful and muscular in their design and still possess excellent structure with a touch more extension and look than most.

His sons and daughters are topping sales, winning in the show ring and are already becoming too numerous to mention.

We look forward to seeing the influence of this impressive breeding bull now and in the years to come.



CWSS 2G - Bankroll Daughter
4-H Achievement Day Champion
Simmental Heifer Calf and
Champion Overall Female Classic
Heritage Beef Show,
Champion Simmental Heifer Calf,
4-H Provincial Show Champion
Simmental Heifer Calf and Champion
Overall Simmental,
Masterfeeds National Junior Beef
Heifer Show at the Royal Winter Fair
first in split then Reserve Champion
Simmental Heifer
Owned by CW Saltwater Simmentals



Double Bar D Morgan 430G
2019 Heifer Calf Champion, Simmental
Show, Manitoba Ag Ex,
Junior Show Overall Champion Heifer,
2019 Manitoba Ag Ex
Owned by Longview Angus.

Georgia



LOT
27

LOT
27

DOUBLE BAR D *Georgia* 412F

• PURE BRED • POLLED • RLD 412F • BPTG1249781 • JAN. 10, 2018 • BW: 88 LBS.

W/C LOADED UP 1119Y
W/C BANKROLL 811D
MISS WERNING KP 8543U

KN SS GOLD MINE L42
CVLS MS GEORGIA 565R
LUCAS SAVANNAH 14K

REMINGTON LOCK N LOAD 54U
AUBREYS BLACK BLAZE III
WAGR DREAM CATCHER 03R
MISS WERNING 534R
KN WLE POWER STROKE
GW MISS LUCKY BUCK 858G
KN HC POWER DRIVE 88H
G&L SAVANNAH 607C

CE	BW	WW	YW	MILK	MCE	MWWT
12.5	1.1	63.3	86.1	25.3	6.9	57.0

Homozygous Polled

Gentle disposition and outstanding as an individual. Power packed pedigree and phenotype. Georgia has many progeny out in the country, too many to mention. 412F has been a standout since birth. Georgia is very complete in her composition, with her eye catching shape and mass, accompanied with the right amount of femininity and extension to go right along with her stoutness. A combination that is not easy to come by. Don't miss the opportunity to buy a great one!

AI Bred to KWA Law Maker April 1, 2019

Exposed to Westway Scarface 71F from April 20 to June 25, 2019.



W/C Bankroll 811D - Sire



CVLS Ms Georgia 565R - Dam

**DOUBLE BAR D***Ella*LOT
28**559F**

- PURE BRED
- RLD 559F
- FEB. 08, 2018
- POLLED
- PG1255155
- BW: 80 LBS.

CE	BW	WW	YW
12.1	1.5	66.4	93.0
MILK	MCE	MWWT	
25.2	7.0	58.4	

LOT
28

W/C LOADED UP 1119Y
W/C BANKROLL 811D
MISS WERNING KP 8543U

REMINGTON LOCK N LOAD 54U
AUBREYS BLACK BLAZE III
WAGR DREAM CATCHER 03R
MISS WERNING 534R

SPRINGCREEK TEDDY 72U
DOUBLE BAR D ELLA 683X
DOUBLE BAR D ELLA 226S

WHEATLAND RED TEDDY 457P
SPRINGCREEK LINNE 10R
BONINA PRIME RED 1033L
DOUBLE BAR D EMILY 022K

559F has a good deal of potential as her confirmation and fluidity of movement is to be admired. Going back to Red Teddy on the bottom side and the Eva cow family.

AI bred to WS Proclamation E202 on April 17, 2019. Exposed to Westway Scarface 71F from April 20 to June 25, 2019.

**DOUBLE BAR D***Unique*LOT
29**486F**

- PURE BRED
- RLD 486F
- JAN. 25, 2018
- POLLED
- PG1293104
- BW: 83 LBS.

CE	BW	WW	YW
10.4	2.3	72.9	108.2
MILK	MCE	MWWT	
23.1	6.0	59.6	

LOT
29

W/C LOADED UP 1119Y
W/C BANKROLL 811D
MISS WERNING KP 8543U

REMINGTON LOCK N LOAD 54U
AUBREYS BLACK BLAZE III
WAGR DREAM CATCHER 03R
MISS WERNING 534R

NICHOLS MANIFEST T79
DOUBLE BAR D UNIQUE 403A
IRCC YOUNIQUE 119Y

NICHOLS LEGACY M72
NICHOLS MCM N13
CMS NICKLEBACK 922W
INDIAN RIVER SPARKLE WORKS

Homozygous Polled

486F is moderate in kind, very correct in structure with good depth of rib and ease of feeding. Predictable bloodline. Grand dam, IRCC 119Y, is Agribition high selling bred from IRCC and is in our donor program.

AI bred to WS Proclamation E202 on April 7, 2019. Exposed to Westway Scarface 71F from April 20 to June 25, 2019. Observed bred to Westway Scarface 71F on April 26.

DOUBLE BAR D

*Sarai*LOT
30

441F

- PURE BRED
- POLLED
- RLD 441F
- BPG1248238
- JAN. 18, 2018
- BW: 81 LBS.

CE	BW	WW	YW
11.6	1.6	67.6	96.3
MILK	MCE	MWWT	
27.3	6.8	61.1	

LOT
30

W/C LOADED UP 1119Y
W/C BANKROLL 811D
MISS WERNING KP 8543U

REMINGTON LOCK N LOAD 54U
AUBREYS BLACK BLAZE III
WAGR DREAM CATCHER 03R
MISS WERNING 534R

KS BRAVADO P68
DOUBLE BAR D SARAI 9X
KWA MS SF 105U

FR REZULT
RIV RED BRIGADIA 969J
MUIRHEAD STEVE FRENCH
KWA MS BUILDER 51N

Homozygous Polled

Very attractive, eye catching, baldy Bankroll female. You'll appreciate the extra extension, length and hip structure of this female. Dam, 9X, came to Double Bar D in dam as Shade's high selling female from Ashworth Farm and Ranch.

AI bred to WS Proclamation E202 on April 17, 2019. Exposed to Westway Scarface 71F from April 20 to June 25, 2019.

DOUBLE BAR D

*Reba*LOT
31

487F

- PURE BRED
- POLLED
- RLD 487F
- BPG1249013
- JAN. 25, 2018
- BW: 85 LBS.

CE	BW	WW	YW
10.3	2.7	69.6	99.3
MILK	MCE	MWWT	
23.8	6.1	58.6	

LOT
31

W/C LOADED UP 1119Y
W/C BANKROLL 811D
MISS WERNING KP 8543U

REMINGTON LOCK N LOAD 54U
AUBREYS BLACK BLAZE III
WAGR DREAM CATCHER 03R
MISS WERNING 534R

WLB OBSIDIAN BLACK 391Y
DOUBLE BAR D REBA 536A
DOUBLE BAR D REBA 608X

HART GOOD TIME W223
WLB 462P LUCY 400W
DOUBLE BAR D ENTICER 48T
MARK'S MS RED REBA 60R

Homozygous Polled

487F is an extremely big barrelled, easy keeping Bankroll daughter that is very easy to look at. Setting up to have an excellent udder, 487F has a promising future considering she's out of the Mark's Ms Red Reba 60R cow family (Agribiton high seller).

AI bred to WS Proclamation E202 on April 19, 2019. Exposed to Westway Scarface 71F from April 20 to June 25, 2019.

**DOUBLE BAR D***Nala*LOT
32**492F**

- PURE BRED
- RLD 492F
- JAN. 28, 2018
- POLLED
- PG1291538
- BW: 83 LBS.

CE	BW	WW	YW
11.6	1.8	66.4	95.5
MILK	MCE	MWWT	
25.4	6.6	58.6	

LOT
32

W/C LOADED UP 1119Y
W/C BANKROLL 811D
MISS WERNING KP 8543U

REMINGTON LOCK N LOAD 54U
AUBREYS BLACK BLAZE III
WAGR DREAM CATCHER 03R
MISS WERNING 534R

SPRINGCREEK TEDDY 72U
DOUBLE BAR D NALA 604Y
DOUBLE BAR D NALA 38S

WHEATLAND RED TEDDY 457P
SPRINGCREEK LINNE 10R
DRIFTING "M" LP 59L
IPU RED MS NOPHALT 121M

Homozygous Polled

Nala 492F is a real standout Bankroll daughter that is dark red, stout made on a correct and typy frame. The Nala, IPU MS Nophalt 121M, cow family is second to none here at Double Bar D, whose offspring always rises to the top.

Exposed to Westway Scarface 71F from April 20 to June 25, 2019.

**DOUBLE BAR D***Sonya*LOT
33**465F**

- PURE BRED
- RLD 465F
- JAN. 23, 2018
- POLLED
- BPG1291455
- BW: 70 LBS.

CE	BW	WW	YW
13.6	0.4	66.7	94.9
MILK	MCE	MWWT	
24.5	6.6	57.9	

LOT
33

W/C LOADED UP 1119Y
W/C BANKROLL 811D
MISS WERNING KP 8543U

REMINGTON LOCK N LOAD 54U
AUBREYS BLACK BLAZE III
WAGR DREAM CATCHER 03R
MISS WERNING 534R

WHEATLAND CIRCUIT BREAKER
DOUBLE BAR D SONYA 438D
DOUBLE BAR D SONYA 526U

WHEATLAND HIGHVOLTAGE122Y
WHEATLAND LADY 81X
LAZY S RED 236P
SGCG RED CLASSY 20N

Very attractive, baldy Bankroll daughter that exhibits a very strong and wide topline and extra spring of rib.

AI bred to WS Proclamation E202 on April 18, 2019. Exposed to Westway Scarface 71F from April 20 to June 25, 2019.

DOUBLE BAR D

LOT
34*Sonya*
513F

- PURE BRED
- RLD 513F
- JAN. 30, 2018
- POLLED
- BPG1292578
- BW: 82 LBS.

CE	BW	WW	YW
11.4	1.7	67.8	96.8
MILK	MCE	MWWT	
24.0	4.2	57.9	

LOT
34

W/C LOADED UP 1119Y
W/C BANKROLL 811D
MISS WERNING KP 8543U

REMINGTON LOCK N LOAD 54U
AUBREYS BLACK BLAZE III
WAGR DREAM CATCHER 03R
MISS WERNING 534R

SPRINGCREEK KO 185W
DOUBLE BAR D SONYA 584Z
DOUBLE BAR D SONYA 526U

TNT KNOCK OUT R206
MJ BLACK JUST CAUSE 204P
LAZY S RED 236P
SGCC RED CLASSY 20N

Homozygous Polled

Very good, stout and attractive with a smooth shoulder and extra heart girth and is very easy fleshing. Nice pedigree on bottom side going back to MJ Black Just Cause 204P and Lazy S Red 236P.

AI bred to WS Proclamation E202 on April 8, 2019. Exposed to Westway Scarface 71F from April 20 to June 25, 2019.

DOUBLE BAR D

LOT
35*Julia*
516F

- PURE BRED
- RLD 516F
- JAN. 30, 2018
- POLLED
- BPG1249069
- BW: 84 LBS.

CE	BW	WW	YW
10.0	3.5	72.2	106.2
MILK	MCE	MWWT	
29.1	7.4	65.2	

LOT
35

W/C LOADED UP 1119Y
W/C BANKROLL 811D
MISS WERNING KP 8543U

REMINGTON LOCK N LOAD 54U
AUBREYS BLACK BLAZE III
WAGR DREAM CATCHER 03R
MISS WERNING 534R

SKORS BLACK JULIUS 36W
BIG HILLS MS JULIUS 674Y
BIG HILLS LADY JAGUAR 276U

ANKONIAN RED CAESAR
SKORS MS JOKER 7P
DOUBLE BAR D JAGUAR 128S
BIG HILLS LADY STOUT 60S

Very long bodied and smooth made from front to back with a very large, square hip structure. Dam was high selling black open heifer from Big Hills' dispersal.

AI bred to WS Proclamation E202 on April 10, 2019. Exposed to Westway Scarface 71F from April 20 to June 25, 2019.

Black Lass



LOT
36

LOT
36

DOUBLE BAR D *Black Lass* **488F**

• PURE BRED • POLLED • RLD 488F • BPG1291537 • JAN. 25, 2018 • BW: 81 LBS.

W/C LOADED UP 1119Y
W/C BANKROLL 811D
MISS WERNING KP 8543U

JF AMERICAN PRIDE 0987X
DOUBLE BAR D LASS 548A
DOUBLE BAR D LASS 408Y

REMINGTON LOCK N LOAD 54U
AUBREYS BLACK BLAZE IIII
WAGR DREAM CATCHER 03R
MISS WERNING 534R
KN MR NLC UPGRADE U8676
WLE CRUISIN SUSAN T26
WHEATLAND RED HUMMER 608S
TH RED LASS 27M

CE	BW	WW	YW	MILK	MCE	MWWT
13.4	1.9	71.3	104.1	24.6	7.8	60.3



LOT
37

LOT
37

DOUBLE BAR D *Tequila* **537F**

• PURE BRED • POLLED • RLD 537F • BPG1249995 • JAN. 27, 2018 • BW: 85 LBS.

W/C LOADED UP 1119Y
W/C BANKROLL 811D
MISS WERNING KP 8543U

STF ROYAL AFFAIR Z44M
DOUBLE BAR D TEQUILA 466D
DOUBLE BAR D TEQUILA 490B

REMINGTON LOCK N LOAD 54U
AUBREYS BLACK BLAZE IIII
WAGR DREAM CATCHER 03R
MISS WERNING 534R

REMINGTON LOCK N LOAD 54U
STF ONYX 451W
WLB OBSIDIAN BLACK 391Y
DOUBLE BAR D TEQUILA 620Y

CE	BW	WW	YW	MILK	MCE	MWWT
10.3	3.2	69.9	102.7	23.1	5.9	58.1

Homozygous Polled

Double bred Lock N Load, Bankroll daughter going back to a CMS Tequila donor cow.

Exposed to Westway Scarface 71F from April 20 to June 25, 2019.
Observed bred on April 23.

Homozygous Polled

Three full sisters to appraise and choose from that will be the backbone to any program. We can't say enough about their dam, Finesse 401W. By far, 401W is the best Wheatland Red Hummer 608S daughter that we have raised. Her consistency in her offspring is to be admired and this is your chance to be involved in this awesome, consistent and front pasture cow family. These three full siblings, sired by Captain Morgan, leave nothing to chance! 401W has progeny working at these progressive programs: Ashworth Farm and Ranch, SK, S Bar D Livestock, Washington, JB Farms, MB, Ross and Sherry Shier, SK, Seven M Livestock, AB, Horner Cattle Co., MB, Ferme Gagnon, QC and Blairs.Ag Cattle Company, SK.

HARVIE JDF WALLBANGER111X
 SVS CAPTAIN MORGAN 11Z
 SUNNYVALLEY BLK JENNA 88U

SHS ENTICER P1B
 JDF PEPSI 61U
 RLA REDSTREAM 152S
 WLB 32H JENNA 360R

WHEATLAND RED HUMMER 608S
 DOUBLE BAR D FINESSE 401W
 MUIRHEAD'S FINE TUNE 53R

WHEATLAND BULL 468P
 WHEATLAND LADY 443P
 KR-SRF KENWORTH 1M
 LRS MS FINE TUNE 252M

CE	BW	WW	YW	MILK	MCE	MWWT
6.2	3.5	78.0	119.7	23.4	62.4	62.4



SVS Captain Morgan 11Z - Sire



Double Bar D Finesse 401W- Dam



LOT
38

LOT
38 **DOUBLE BAR D *Finesse* 618E**

• PURE BRED • POLLED • RLD 618E • BPTG1238319 • MAY 27, 2017 • BW: 78 LBS.

618E is simply awesome in kind, substance and has brood cow written all over her!
 Exposed to Westway Scarface 71F on April 13 and then from April 20 to June 25, 2019.



LOT
39

LOT
39 **DOUBLE BAR D *Finesse* 612E**

• PURE BRED • POLLED • RLD 612E • PTG1238312 • MAY 25, 2017 • BW: 85 LBS.

Here's your 'red' chance at this cow family. 612E is a "power" type of cow that exhibits ease of fleshing and excess depth of body.

AI bred to WC Bankroll 811D on April 11, 2019. Exposed to Westway Scarface 71F from April 20 to June 25, 2019.

LOT
40 **DOUBLE BAR D *Finesse* 511F**

• PURE BRED • POLLED • RLD 511F • BPTG1249064 • JAN. 29, 2018 • BW: 88 LBS.

511F pulls it all together. A real feature heifer that exhibits depth of rib along with good femininity and is sound on her feet and legs.

AI bred to WC Bankroll 811D on April 12, 2019. Exposed to Westway Scarface 71F from April 20 to June 25, 2019.



LOT
40

CHOICE OF LOTS 41 & 42



LOT
41

SS/PRS Jewel Y9S1 - Dam

Another rare opportunity to invest in a proven cow family – you choose red or black and Double Bar D is happy to retain the one left. 610E is a dark red Morgan daughter that you have to see for yourself and appraise her depth of rib, ease of fleshing and overall balance. 609E is very similar with a bit more stature and has brood cow written all over her.

LOT
41

DOUBLE BAR D *Jewel* 610E

• PURE BRED • POLLED • RLD 610E • PTG1238311 • MAY 25, 2017 • BW: 83 LBS.

CE	BW	WW	YW	MILK	MCE	MWWT
5.6	2.8	69.8	104.7	18.5	2.0	53.4

AI bred to WC Bankroll 811D on April 2, 2019. Exposed to Westway Scarface 71F from April 20 to June 25, 2019.

HARVIE JDF WALLBANGER 111X
SVS CAPTAIN MORGAN 11Z
SUNNYVALLEY BLK JENNA 88U

HS ENTICER P1B
JDF PEPSI 61U
RLA REDSTREAM 152S
WLB 32H JENNA 360R

LOT
42

DOUBLE BAR D *Jewel* 609E

• PURE BRED • POLLED • RLD 609E • BPTG1238308 • MAY 25, 2017 • BW: 78 LBS.

CE	BW	WW	YW	MILK	MCE	MWWT
5.6	2.8	69.8	104.7	18.5	2.0	53.4

AI bred to WC Bankroll 811D on April 5, 2019. Exposed to Westway Scarface 71F from April 20 to June 25, 2019.

BMR EXPLORER
SS/PRS JEWEL Y9S1
EKHCC RED JEWEL 760

WESTFALL VOYAGER 721P
WW MISS MY DREAM 429R
SVF/NJC BUILT RIGHT N48
EKHCC CROWN JEWEL 523



LOT
42

EKHCC Red Jewel 760 - Grand Dam

DOUBLE BAR D

LOT *Berry*
43 442F

- PURE BRED
- RLD 442F
- JAN. 18, 2018
- POLLED
- PG1248239
- BW: 80 LBS.

CE	BW	WW	YW
7.1	3.1	75.6	122.4
MILK	MCE	MWWT	
26.7	3.0	64.5	



Wheatland Lady 822U
Grand Dam

HARVIE JDF WALLBANGER111X
SVS CAPTAIN MORGAN 11Z
SUNNYVALLEY BLK JENNA 88U



LOT
43

HS ENTIGER P1B
JDF PEPSI 61U
RLA REDSTREAM 152S
WLB 32H JENNA 360R

DOUBLE BAR D DRIFTWOOD 83
DOUBLE BAR D BLACKBERRY
WHEATLAND LADY 822U

DRIFTING "M" LP 59L
DOUBLE BAR D LILI 59M
WHEATLAND BULL 680S
WHEATLAND LADY 638 S

Homozygous Polled

Very good, red Morgan daughter that is a thick made, easy fleshing type. No guess work here as her grand dam is none other than Wheatland Lady 822U. AI bred to WC Bankroll 811D on April 2, 2019. Exposed to Westway Scarface 71F from April 20 to June 25, 2019.

DOUBLE BAR D

LOT *Lola*
44 427F

- PURE BRED
- RLD 427F
- JAN. 15, 2018
- POLLED
- BPG1248225
- BW: 82 LBS.

CE	BW	WW	YW
8.4	3.8	76.0	115.8
MILK	MCE	MWWT	
24.1	3.8	62.1	



LOT
44

HARVIE JDF WALLBANGER111X
SVS CAPTAIN MORGAN 11Z
SUNNYVALLEY BLK JENNA 88U

HS ENTIGER P1B
JDF PEPSI 61U
RLA REDSTREAM 152S
WLB 32H JENNA 360R

JF AMERICAN PRIDE 0987X
DOUBLE BAR D LOLA 509A
DOUBLE BAR D LOLA 332Y

KN MR NLC UPGRADE U8676
WLE CRUISIN SUSAN T26
FS POL BALBOA 40U
MFI LOLITA 5124

Very nice, modest framed Morgan daughter going back to a good American Pride daughter and whose grand dam, 332Y, is a top end Fleckvieh cow here at Double Bar D. 427F has ¼ Fleckvieh genetics.

AI bred to WC Bankroll 811D on April 16, 2019. Exposed to Westway Scarface 71F from April 20 to June 25, 2019.



LOT
45

DOUBLE BAR D

Rosa

LOT
45

523F

- PURE BRED
- RLD 523F
- JAN. 31, 2018
- POLLED
- BPG1249972
- BW: 91 LBS.

CE	BW	WW	YW
6.0	4.7	79.2	115.6
MILK	MGE	MWWT	
25.3	3.5	64.9	



Double Bar D Defender 611C
Sire

SVS CAPTAIN MORGAN 11Z
DOUBLE BAR D DEFENDER 611C
DOUBLE BAR D GEORGIA 486A

HARVIE JDF WALLBANGER 111X
SUNNYVALLEY BLK JENNA 88U
SS UPSCALE X25
CVLS MS GEORGIA 565R

DOUBLE BAR D TRUE GRIT
DOUBLE BAR D RA 442A
DOUBLE BAR D LIANNE 39T

TNT TANKER U263
WHEATLAND LADY 822U
CG RINGLEADER 28R
DOUBLE BAR D RED LIANNE

Homozygous Polled

A different twist on Morgan genetics with the influence of the Georgia cow family coming with Defender. Volume, volume, volume best describes 523F and she looks like she'll be a herd bull factory!

Exposed to Westway Scarface 71F from April 20 to June 25, 2019.



LOT
46

DOUBLE BAR D

Delilah

LOT
46

491F

- PERCENTAGE
- RLD 491F
- JAN. 27, 2018
- POLLED
- BPRS1249048
- BW: 90 LBS.

CE	BW	WW	YW
6.3	4.0	72.0	103.4
MILK	MGE	MWWT	
19.5	2.7	55.5	

SVS CAPTAIN MORGAN 11Z
DOUBLE BAR D DEFENDER 611C
DOUBLE BAR D GEORGIA 486A

HARVIE JDF WALLBANGER 111X
SUNNYVALLEY BLK JENNA 88U
SS UPSCALE X25
CVLS MS GEORGIA 565R

JUSTABOUT KING LABEL
DOUBLE BAR D 532B
SIMMENTAL/ANGUS

RC CLUB KING 040R
JUSTABOUT LABEL ME

Homozygous Polled

Performance type of heifer that is also very easy fleshing. Should be an excellent brood cow. $\frac{3}{4}$ blood.

Exposed to Westway Scarface 71F from April 20 to June 25, 2019.

DOUBLE BAR D

LOT
47 *Exciter*
497F

- PURE BRED
- RLD 497F
- JAN. 28, 2018
- POLLED
- BPG1249054
- BW: 90 LBS.

CE	BW	WW	YW
5.6	3.2	69.7	104.2
MILK	MCE	MWWT	
25.0	2.5	59.9	



LOT
47

SVS CAPTAIN MORGAN 11Z
DOUBLE BAR D DEFENDER 611C
DOUBLE BAR D GEORGIA 486A

HARVIE JDF WALLBANGER 111X
SUNNYVALLEY BLK JENNA 88U
SS UPSCALE X25
CVLS MS GEORGIA 565R

KBR BLACK EXCITER 758T
IPU MS. EXCITER 102X
IPU MS RESISTOL 78U

SKORS SUPER POWER 95R
LFE BLACK LADY 58M
IPU BLACK RESISTOL 193R
MS SD 600U IRISH 17

Homozygous Polled

Big ribbed Defender daughter whose dam is a very good IPU bred cow. 497F is developing a very nice udder.
AI bred to WC Bankroll 811D on April 18, 2019. Exposed to Westway Scarface 71F from April 20 to June 25, 2019.

DOUBLE BAR D

LOT
48 *Flo*
467F

- PURE BRED
- RLD 467F
- JAN. 23, 2018
- POLLED
- BPG1248254
- BW: 92 LBS.

CE	BW	WW	YW
2.3	5.9	75.8	108.6
MILK	MCE	MWWT	
27.8	-1.0	65.7	



LOT
48

SVS CAPTAIN MORGAN 11Z
DOUBLE BAR D DEFENDER 611C
DOUBLE BAR D GEORGIA 486A

HARVIE JDF WALLBANGER 111X
SUNNYVALLEY BLK JENNA 88U
SS UPSCALE X25
CVLS MS GEORGIA 565R

MFI JAHARI 8091
DOUBLE BAR D FLO 320Y
DOUBLE BAR D 204P

SHAWACRES JAHARI 50L
MFI PETRA 3105
R PLUS 2045M
JB FLORIDA 118F

3/8 Fleckvieh genetics. Profiles very nice with excellent neck extension and balance.

AI bred to WC Bankroll 811D on April 15, 2019. Exposed to Westway Scarface 71F from April 20 to June 25, 2019.

Bryn



LOT
49

LOT
49

DOUBLE BAR D *Bryn* 431F

• PURE BRED • POLLED • RLD 431F • BPG1248229 • JAN. 16, 2018 • BW: 78 LBS.

CDI AUTHORITY 77X	NF TRUMP S582
KWA LAW MAKER 59C	CDI MS CROCKET 88T
KWA MS ROCK 14X	KWA RED ROCK 5T
	KWA MS BARON 9U
JF AMERICAN PRIDE 0987X	KN MR NLC UPGRADE U8676
DOUBLE BAR D BRYN 560A	WLE CRUISIN SUSAN T26
DOUBLE BAR D BRYNN 86X	ACS RED POWER 868U
	DOUBLE BAR D BRETT 161U

CE	BW	WW	YW	MILK	MCE	MWWT
9.5	2.3	70.5	109.9	23.9	6.1	59.2

Homozygous Polled

Law Maker continues to sire the right kind and his most admirable attribute is being very sound footed. Probably the best footed bull to walk the pastures at Double Bar D. 431F is a very complete female that strides out flawlessly on a very good foot. Extra depth of rib describes Bryn, whose dam is a very good Pride daughter going back to the Brett cow family.

AI bred to W/C Bankroll 811D on April 14, 2019. Exposed to Double Bar D Bankroll 507F from April 20 to June 20, 2019.



KWA Law Maker 59C - Sire



JF American Pride 0987X - Grand Sire

DOUBLE BAR D SHARING THE HERD FALL FEMALE SALE

DOUBLE BAR D

LOT
50 *Betty*
575F

- PURE BRED
- RLD 575F
- FEB. 13, 2018
- POLLED
- BPG1255164
- BW: 70 LBS.

CE	BW	WW	YW
9.3	1.8	69.4	105.4
MILK	MCE	MWWT	
26.8	4.4	61.5	



CDI AUTHORITY 77X
KWA LAW MAKER 59C
KWA MS ROCK 14X

NF TRUMP S582
CDI MS CROCKET 88T
KWA RED ROCK 5T
KWA MS BARON 9U

WLB OBSIDIAN BLACK 391Y
DOUBLE BAR D BETTY 667C
DOUBLE BAR D BETTY 261W

HART GOOD TIME W223
WLB 462P LUCY 400W
FGAF MASAIL 307S
DOUBLE BAR D BETTY 155M

Excellent spring of rib and very true on her feet and legs. ¼ Fleckvieh breeding with the influence of the proven and consistent, Betty 155M cow family. AI bred to W/C Bankroll 811D on April 8, 2019. Exposed to Double Bar D Bankroll 507F from April 20 to June 20, 2019.

DOUBLE BAR D

LOT
51 *Cherub*
645F

- PURE BRED
- RLD 645F
- APR. 08, 2018
- POLLED
- PG1291595
- BW: 80 LBS.

CE	BW	WW	YW
7.6	2.9	75.9	118.1
MILK	MCE	MWWT	
23.7	3.8	61.7	



CDI AUTHORITY 77X
KWA LAW MAKER 59C
KWA MS ROCK 14X

NF TRUMP S582
CDI MS CROCKET 88T
KWA RED ROCK 5T
KWA MS BARON 9U

SVS CAPTAIN MORGAN 11Z
DOUBLE BAR D CHERUB 663C
DOUBLE BAR D CHERUB 628Z

HARVIE JDF WALLBANGER 111X
SUNNYVALLEY BLK JENNA 88U
SPRINGCREEK TEDDY 72U
DOUBLE BAR D ANGEL 57L

Homozygous Polled

Really good hip structure to Cherub 645F, whose dam is a powerful Morgan daughter going back to Red Teddy and Destiny on the bottom side. AI bred to W/C Bankroll 811D on April 18, 2019. Exposed to Double Bar D Bankroll 507F from April 20 to June 20, 2019.

LOT
52DOUBLE BAR D *Lola* 620F

• PURE BRED • POLLED • RLD 620F • PG1255199 • MAR. 6, 2018 • BW: 80 LBS.

CDI AUTHORITY 77X
KWA LAW MAKER 59C
KWA MS ROCK 14X

MFI JEREMIAH 9022
DOUBLE BAR D LOLA 213C
MFI LOLITA 3107

NF TRUMP S582
CDI MS CROCKET 88T
KWA RED ROCK 5T
KWA MS BARON 9U
GIBBONS JEREMIAH
MFI PETRA 2093
KN GREAT GUNS BANDIT 41E
ANCHOR "T" SELMA 13F

CE	BW	WW	YW	MILK	MCE	MWWT
4.7	4.3	73.2	108.9	29.7	0.9	66.3

Solid red Law Maker that is very gentle in nature, correct in structure and attractive in phenotype. ½ Fleckvieh genetics, whose dam is a very good Juggernaut daughter.

Natural exposure to Westway Scarface 71F on April 4, 2019. Exposed to Double Bar D Bankroll 507F from April 20 to June 20, 2019.

LOT
53DOUBLE BAR D *Star* 587F

• PURE BRED • POLLED • RLD 587F • PG1291588 • FEB. 17, 2018 • BW: 80 LBS.

CDI AUTHORITY 77X
KWA LAW MAKER 59C
KWA MS ROCK 14X

WLSF ABESLY
DOUBLE BAR D STAR 216C
DOUBLE BAR D STAR 97Z

NF TRUMP S582
CDI MS CROCKET 88T
KWA RED ROCK 5T
KWA MS BARON 9U
KN WLSF ABRAHAM
WLSF PEGSLY
PROSTOCK HUGO 7052T
RLS P FF STAR 43X

CE	BW	WW	YW	MILK	MCE	MWWT
6.6	3.7	74.3	113.3	27.8	3.9	65.0

Red blaze Law Maker daughter that is stout made and is very eye pleasing. ½ Fleckvieh.

AI bred to W/C Bankroll 811D on April 9, 2019. Exposed to Double Bar D Bankroll 507F from April 20 to June 20, 2019.

LOT
54DOUBLE BAR D *Manza* 593F

• PURE BRED • POLLED • RLD 593F • PG1255179 • FEB. 18, 2018 • BW: 85 LBS.

CDI AUTHORITY 77X
KWA LAW MAKER 59C
KWA MS ROCK 14X

KN ROONIK
DOUBLE BAR D MANZA 139C
KN SALMON ARM MANZA 7L

NF TRUMP S582
CDI MS CROCKET 88T
KWA RED ROCK 5T
KWA MS BARON 9U
KN OVERAL BIRNER
KN WISP-WILL PEGGY 5TH
RU-DEV JIM
KN NIEMANDA MANDRAN

CE	BW	WW	YW	MILK	MCE	MWWT
4.5	4.3	73.1	111.1	27.4	1.8	64.0

Red blaze, dark red who is very correct in structure, moderate in frame and deep bodied. Fleckvieh Manza dam is a top end, young Fleckvieh cow here at Double Bar D.

AI bred to W/C Bankroll 811D on April 4, 2019. Exposed to Double Bar D Bankroll 507F from April 20 to June 20, 2019.

DOUBLE BAR D

*Sasha*LOT
55

518F

- PURE BRED
- POLLED
- RLD 518F
- BPG1291616
- JAN. 30, 2018
- BW: 92 LBS.

CE	BW	WW	YW
5.5	4.2	73.5	107.3

MILK	MCE	MWWT
19.9	4.8	56.7

VCL LKC Dagger 605D
Sire

PROFIT
VCL LKC DAGGER 605D
BF MISS CRYSTEEL TANGO

LOT
55

WS PILGRIM H182U
WAGR PANARAMA 204Z
SVF STEEL FORCE S701
LLSF TANGO T194

KN TNT TANKER U263
DOUBLE BAR SASHA 75Y
SLF MISS SWAN 49U

MR NLC SUPERIOR S6018
TNT MISS S17
TNT TOP CUT P274
RKTS MISS RED DOC 9K

Homozygous Polled

A fancy and typy Dagger daughter that has a strong and big, wide top. Very gentle disposition. Grand dam, Miss Swan 49U is a power black cow bought from Swan Lake Farms.

AI bred to W/C Bankroll 811D April 27, 2019. Exposed to Double Bar D Bankroll 507F from April 30 to June 20, 2019.

DOUBLE BAR D

*Sonya*LOT
56

527F

- PURE BRED
- POLLED
- RLD 527F
- BPG1292580
- FEB. 01, 2018
- BW: 105 LBS.

CE	BW	WW	YW
7.3	1.9	54.1	74.1

MILK	MCE	MWWT
22.7	2.9	49.7

LOT
56

PROFIT
VCL LKC DAGGER 605D
BF MISS CRYSTEEL TANGO

WS PILGRIM H182U
WAGR PANARAMA 204Z
SVF STEEL FORCE S701
LLSF TANGO T194

WLSF KAIMAT 930X
DOUBLE BAR D SONYA 634C
DOUBLE BAR D SONYA 584Z

WLSF KAUNLO
SALMON ARM SOBI 29R
SPRINGCREEK KO 185W
DOUBLE BAR D SONYA 526U

Scurred

Very stout made and well balanced from front to back. Dagger really puts strong tops on his progeny.

Natural exposure to Double Bar D Bankroll 507F on April 10, 2019. Exposed to Double Bar D Bankroll 507F from April 20 to June 20, 2019.

**DOUBLE BAR D**LOT
57*Fergie*
414F

- PURE BRED
- RLD 414F
- JAN. 10, 2018
- POLLED
- BPG1248220
- BW: 82 LBS.

CE	BW	WW	YW
4.1	4.0	63.2	87.5
MILK	MCE	MWWT	
18.4	3.1	50.0	

PROFIT
VCL LKC DAGGER 605D
BF MISS CRYSTEEL TANGO

WS PILGRIM H182U
WAGR PANARAMA 204Z
SVF STEEL FORCE S701
LLSF TANGO T194

DOUBLE BAR D GUNNER 123U
DOUBLE BAR D FERGIE 203Y
DOUBLE BAR D FERGIE 52U

TNT ACCELERATOR S226
LORNA'S BLACK MARINA 110M
PRAIRIE WIND RED SURGE 9S
CDP FERGIE 52S

Homozygous Polled

414F has very good spring of rib and is very straight and nice in her lines. Dam, 203Y, is a cow that commands your attention.

AI bred to W/C Bankroll 811D on April 13, 2019. Exposed to Double Bar D Bankroll 507F from April 20 to June 20, 2019. Observed bred to Double Bar D Bankroll 507F on April 30, 2019.

**DOUBLE BAR D**LOT
58*Cora*
407F

- PURE BRED
- RLD 407F
- JAN. 07, 2018
- POLLED
- BPG1248215
- BW: 82 LBS.

CE	BW	WW	YW
6.7	3.9	71.2	103.5
MILK	MCE	MWWT	
22.7	2.6	58.3	

PROFIT
VCL LKC DAGGER 605D
BF MISS CRYSTEEL TANGO

WS PILGRIM H182U
WAGR PANARAMA 204Z
SVF STEEL FORCE S701
LLSF TANGO T194

SVS CAPTAIN MORGAN 11Z
DOUBLE BAR D CORA 686C
DOUBLE BAR D COMPLETE 7Z

HARVIE JDF WALLBANGER111X
SUNNYVALLEY BLK JENNA 88U
DOUBLE BAR D SPITFIRE 20X
TIMBERWOOD COMPLETE 5U

Very stout made and complete in her composition. Dam side going back to a very good Timberwood Complete 5U cow.

AI bred to KWA Law Maker 59C on April 6, 2019. Exposed to Double Bar D Bankroll 507F from April 20 to June 20, 2019.

DOUBLE BAR D

LOT *Missy*
59 656E

- PURE BRED
- RLD 656E
- JUN. 04, 2017
- POLLED
- PG1238360
- BW: 88 LBS.

CE	BW	WW	YW
6.5	2.7	61.5	92.9
MILK	MCE	MWWT	
24.6	3.5	55.4	



SWAN LAKE BIG RED 85B
Sire

- KWA FLYF RED MOUNTAIN 16Z
- SWAN LAKE BIG RED 85 B
- SWAN LAKE LILI 115Z

Homozygous Polled

Very easy to look at with her overall smooth, long and big hip that jumps out at you. Dam side goes back to some real influential bulls here at Double Bar D such as KWA Red Dyno and ACS Red Power.

AI bred to W/C Bankroll 811D on April 7, 2019. Exposed to Double Bar D Bankroll 507F from April 20 to June 20, 2019. Observed bred to Double Bar D Bankroll 507F on April 25.



LOT
59

- IPU RED WESTERN 49X
- KWA MS ROCK 14X
- LFE BLACK LAKOTA 385W
- DOUBLE BAR D LILI 62R

- ACS RED POWER 868U
- DOUBLE BAR D MISSY 659Y
- DOUBLE BAR D MISSY 111S

- WHEATLAND RED TEDDY 457P
- LFE FLORENCE 118M
- KWA RED DYN0 28P
- DOUBLE BAR D MS MAX 179P

DOUBLE BAR D

LOT *Justice*
60 571F

- PURE BRED
- RLD 571F
- FEB. 12, 2018
- POLLED
- PG1291666
- BW: 75 LBS.

CE	BW	WW	YW
9.2	2.3	62.8	95.0
MILK	MCE	MWWT	
23.5	2.8	54.9	



LOT
60

- IPU RED WESTERN 49X
- KWA MS ROCK 14X
- LFE BLACK LAKOTA 385W
- DOUBLE BAR D LILI 62R

- WLB OBSIDIAN BLACK 391Y
- DOUBLE BAR D JUSTICE 710B
- DOUBLE BAR D JUSTICE 912X

- HART GOOD TIME W223
- WLB 462P LUCY 400W
- BAR 5 SA HEMISPHERE 411R
- MJ BLACK JUST CAUSE 204P

Dark red and very nice in her lines and structure. Dam is a very good WLB Obsidian Black daughter going back to the MJ Black Just Cause 204P cow. AI bred to W/C Bankroll 811D on April 12, 2019. Exposed to Double Bar D Bankroll 507F from April 20 to June 20, 2019.



DOUBLE BAR D

*Naomi*LOT
61**612F**

- PURE BRED
- RLD 612F
- FEB. 25, 2018
- POLLED
- PG1255187
- BW: 90 LBS.

CE	BW	WW	YW
6.5	3.9	69.9	107.7
MILK	MCE	MWWT	
21.8	3.4	56.8	

LOT
61

KWA FLYF RED MOUNTAIN 16Z
SWAN LAKE BIG RED 85 B
SWAN LAKE LILI 115Z

IPU RED WESTERN 49X
KWA MS ROCK 14X
LFE BLACK LAKOTA 385W
DOUBLE BAR D LILI 62R

JF AMERICAN PRIDE 0987X
DOUBLE BAR D NAOMI 517A
DOUBLE BAR D NAOMI 76S

KN MR NLC UPGRADE U8676
WLE CRUISIN SUSAN T26
DRIFTING "M" LP 59L
IPU RED MS NOPHALT 121M

Homozygous Polled

Very stylish made with good length of body. Powerful and consistent cow family.

AI bred to W/C Bankroll 811D on April 17, 2019. Exposed to Double Bar D Bankroll 507F from April 20 to June 20, 2019.



DOUBLE BAR D

*Payton*LOT
62**613F**

- PURE BRED
- RLD 613F
- FEB. 26, 2018
- POLLED
- PG1255190
- BW: 85 LBS.

CE	BW	WW	YW
7.7	2.7	66.2	97.6
MILK	MCE	MWWT	
21.6	4.2	54.7	

LOT
62

KWA FLYF RED MOUNTAIN 16Z
SWAN LAKE BIG RED 85 B
SWAN LAKE LILI 115Z

IPU RED WESTERN 49X
KWA MS ROCK 14X
LFE BLACK LAKOTA 385W
DOUBLE BAR D LILI 62R

SPRINGCREEK TEDDY 72U
DOUBLE BAR D PAYTON 658Z
DOUBLE BAR D PAYTON 49T

WHEATLAND RED TEDDY 457P
SPRINGCREEK LINNE 10R
BISS TOBY 818P
MISS R PLUS 002K

Homozygous Polled

Red blaze heifer that shows extra thickness and fleshing ability. Dam is a good Payton cow that consistently raises the good ones.

AI bred to W/C Bankroll 811D on April 13, 2019. Exposed to Double Bar D Bankroll 507F from April 20 to June 20, 2019.

LOT
63

DOUBLE BAR D *Reba* **624F**

• PURE BRED • POLLED • RLD 624F • PG1291581 • MAR. 12, 2018 • BW: 90 LBS.

KWA FLYF RED MOUNTAIN 16Z	IPU RED WESTERN 49X
SWAN LAKE BIG RED 85 B	KWA MS ROCK 14X
SWAN LAKE LILI 115Z	LFE BLACK LAKOTA 385W
	DOUBLE BAR D LILI 62R
RC CLUB KING 040R	KN HC HUMMER 12M
DOUBLE BAR D REBA 503Z	RC MISS GRIFFEY 038N
MARK'S MS RED REBA 60R	KN NLC GOOD A NUFF 33G
	LFE SHEILA 63N

CE	BW	WW	YW	MILK	MCE	MWWT
6.7	3.9	73.6	110.9	20.4	2.3	57.2

Homozygous Polled
Extra capacity and smooth made. Dam is a real good Club King cow that goes back to Mark's Ms Red Reba.
AI bred to W/C Bankroll 811D on April 2, 2019. Exposed to Double Bar D Bankroll 507F from April 20 to June 20, 2019.



LOT
63

LOT
64

DOUBLE BAR D *Red Nectar* **552F**

• PURE BRED • POLLED • RLD 552F • PG1255152 • FEB. 06, 2018 • BW: 85 LBS.

KWA FLYF RED MOUNTAIN 16Z	IPU RED WESTERN 49X
SWAN LAKE BIG RED 85 B	KWA MS ROCK 14X
SWAN LAKE LILI 115Z	LFE BLACK LAKOTA 385W
	DOUBLE BAR D LILI 62R
EDN PUNCH OUT 50W	EDN SAMBO 192S
MFR BLACK NECTAR 105A	EDN RITA 3R
MFR REDFIRE 945W	TNT CENTERFIRE T242
	LC MEGA RED

CE	BW	WW	YW	MILK	MCE	MWWT
7.4	3.2	64.9	98.5	25.1	1.8	57.6

Homozygous Polled
Good, sound, moderate Big Red daughter. Dam was high selling cow from MFR Female Production Sale.
AI bred to W/C Bankroll 811D on April 7, 2019. Exposed to Double Bar D Bankroll 507F from April 20 to June 20, 2019.



LOT
64

LOT
65

DOUBLE BAR D *Missy* **601F**

• PURE BRED • POLLED • RLD 601F • PG1255182 • FEB. 22, 2018 • BW: 80 LBS.

KWA FLYF RED MOUNTAIN 16Z	IPU RED WESTERN 49X
SWAN LAKE BIG RED 85 B	KWA MS ROCK 14X
SWAN LAKE LILI 115Z	LFE BLACK LAKOTA 385W
	DOUBLE BAR D LILI 62R
DOUBLE BAR D GUNNER 1W	TNT TOP GUN R244
DOUBLE BAR D MISSY 429B	CMS TEQUILA 719T
DOUBLE BAR D MISSY 659Y	ACS RED POWER 868U
	DOUBLE BAR D MISSY 111S

CE	BW	WW	YW	MILK	MCE	MWWT
7.5	2.5	64.4	99.9	22.6	4.7	54.8

Dark red Big Red daughter. Stout made and well balanced. Dam is a good, consistent daughter of the Double Bar D Gunner 1W bull going to Jaydawn Farms.
AI bred to W/C Bankroll 811D on April 7, 2019. Exposed to Double Bar D Bankroll 507F from April 20 to June 20, 2019.



"We start them young at DBD!"

DOUBLE BAR D SHARING THE HERD FALL FEMALE SALE

LOT
66

WLE Cruisin Susan T26
Dam of Lot 66

LOT
67LOT
69LOT
66DOUBLE BAR D *Susan* 641F

• PURE BRED • POLLED • RLD 641F • BPG1291594 • MAR. 29, 2018 • BW: 80 LBS.

KWA FLYF RED MOUNTAIN 16Z
SWAN LAKE BIG RED 85 B
SWAN LAKE LILI 115Z

KN CNS DREAM ON L 186
WLE CRUISIN SUSAN T26
MISS CHLOE RF26K

IPU RED WESTERN 49X
KWA MS ROCK 14X
LFE BLACK LAKOTA 385W
DOUBLE BAR D LILI 62R

KN NICHOLS LEGACY G151
CNS SHEEZA DREAM K107W
DRAKE COWBOY
MISS IRISH WEB 1168

CE	BW	WW	YW	MILK	MCE	MWWT
9.8	1.6	60.8	89.9	19.8	5.6	50.2

Homozygous Polled

Nice conformation and typy in design. Powerful cow behind her, WLE Cruisin Susan T26.

Exposed to Double Bar D Bankroll 507F from April 20 to June 20, 2019.

LOT
67DOUBLE BAR D *Lady Black* 580F

• PURE BRED • POLLED • RLD 580F • BPG1255171 • FEB. 15, 2018 • BW: 80 LBS.

KWA FLYF RED MOUNTAIN 16Z
SWAN LAKE BIG RED 85 B
SWAN LAKE LILI 115Z

JF AMERICAN PRIDE 0987X
DOUBLE BAR D LADY 519A
DOUBLE BAR D LADY 113X

IPU RED WESTERN 49X
KWA MS ROCK 14X
LFE BLACK LAKOTA 385W
DOUBLE BAR D LILI 62R

KN MR NLC UPGRADE U8676
WLE CRUISIN SUSAN T26
DOUBLE BAR D GUNNER 123U
ACS RED LADY HAAS 826U

CE	BW	WW	YW	MILK	MCE	MWWT
9.8	2.3	66.8	101.0	23.4	5.9	56.8

Homozygous Polled

Strong top and moderate in stature. Dam is a powerful, American Pride daughter going back to Red Teddy and Gunner.

AI bred to W/C Bankroll 811D on April 12, 2019. Exposed to Double Bar D Bankroll 507F from April 20 to June 20, 2019.

LOT
68DOUBLE BAR D *Park* 631F

• PURE BRED • POLLED • RLD 631F • BPG1292889 • MAR. 19, 2018 • BW: 85 LBS.

KWA FLYF RED MOUNTAIN 16Z
SWAN LAKE BIG RED 85 B
SWAN LAKE LILI 115Z

SVS CAPTAIN MORGAN 11Z
DOUBLE BAR D PARK 720B
DOUBLE BAR D PARK 8U

IPU RED WESTERN 49X
KWA MS ROCK 14X
LFE BLACK LAKOTA 385W
DOUBLE BAR D LILI 62R

HARVIE JDF WALLBANGER 111X
SUNNYVALLEY BLK JENNA 88U
ACS RED POWER 868U
MISS PARKHILL 30S

CE	BW	WW	YW	MILK	MCE	MWWT
8.1	3.0	69.6	107.5	26.7	3.9	61.5

Homozygous Polled

631F has great rib shape on a correct structure. Dam is a big ribbed, Morgan daughter going back to the Miss Parkhill 30S cow family.

AI bred to W/C Bankroll 811D on April 5, 2019. Exposed to Double Bar D Bankroll 507F from April 20 to June 20, 2019.

LOT
69DOUBLE BAR D *Miss* 633F

• PURE BRED • POLLED • RLD 633F • APPLIED FOR • MAR. 21, 2018 • BW: 80 LBS.

CDI AUTHORITY 77X
KWA LAW MAKER 59C
KWA MS ROCK 14X

W/C CHAMBERLAIN 8543Z
W/C RJ MISS 8543 6110D
ANGUS

NF TRUMP S582
CDI MS CROCKET 88T
KWA RED ROCK 5T
KWA MS BARON 9U
R&R CHAMBERLAIN X744
MISS WERNING KP 8543U

PE	CE	BW	WW	YW	MILK	MCE	MWWT
	9.7	1.2	72.1	110.9	24.6	4.5	60.7

Homozygous Polled

¾ blood Law Maker daughter out of a really good, half blood cow.

AI bred to W/C Bankroll 811D on April 5, 2019. Exposed to Double Bar D Bankroll 507F from April 20 to June 20, 2019.

LOT
70DOUBLE BAR D *Dina* 636E

• PURE BRED • POLLED • RLD 636E • BPG1238336 • JUN. 10, 2017 • BW: 81 LBS.

STF ROYAL AFFAIR Z44M
DOUBLE BAR D ROYAL 526B
SS/PRS JEWEL Y9S1SVS CAPTAIN MORGAN 11Z
DOUBLE BAR D DINA 604B
DOUBLE BAR D DYNAMITE 1TREMINGTON LOCK N LOAD 54U
STF ONYX 451W
BMR EXPLORER
EKHCC RED JEWEL 760HARVIE JDF WALLBANGER 111X
SUNNYVALLEY BLK JENNA 88U
GRINALTA'S POLLED REGENT
TH BLACK LASS 10R

CE	BW	WW	YW	MILK	MCE	MWWT
4.0	3.0	67.7	102.9	18.5	-0.9	52.4

Homozygous Polled

Powerful best describes 636E! She may be sired by 526B but looks like a typical Captain Morgan, as is her dam. Broody with tons of rib shape.

AI bred to W/C Bankroll 811D on April 15, 2019. Exposed to Double Bar D Bankroll 507F from April 20 to June 20, 2019.

LOT
70LOT
71DOUBLE BAR D *Red Lady* 592F

• PURE BRED • POLLED • RLD 592F • PG1255178 • FEB. 18, 2018 • BW: 75 LBS.

STF ROYAL AFFAIR Z44M
DOUBLE BAR D ROYAL 526B
SS/PRS JEWEL Y9S1WHEATLAND RED TEDDY 457P
ACS RED LADY HAAS 826U
HAAS RANCH G217REMINGTON LOCK N LOAD 54U
STF ONYX 451W
BMR EXPLORER
EKHCC RED JEWEL 760WHEATLAND BULL 131L
WHEATLAND LADY 902J
NLC 64Y TOMCAT
HAAS RANCH D89

CE	BW	WW	YW	MILK	MCE	MWWT
8.8	0.2	58.7	85.7	17.7	5.5	47.1

Homozygous Polled

Dark red, 526B daughter with a very strong top. Dam, 826U, produced a good Captain Morgan son that worked for Adrian Rehorst. Grand dam is a productive Haas Ranch G217 cow.

AI bred to W/C Bankroll 811D on April 11, 2019. Exposed to Double Bar D Bankroll 507F from April 20 to June 20, 2019.

LOT
71LOT
72DOUBLE BAR D *Maisy* 646F

• PURE BRED • POLLED • RLD 646F • PG1291582 • APR. 10, 2018 • BW: 90 LBS.

STF ROYAL AFFAIR Z44M
DOUBLE BAR D ROYAL 526B
SS/PRS JEWEL Y9S1RV NICKELBACK 6U
DOUBLE BAR D 500Z
DOUBLE BAR D REBA 604XREMINGTON LOCK N LOAD 54U
STF ONYX 451W
BMR EXPLORER
EKHCC RED JEWEL 760GPCC HAFKENBERG 8F
MISS JOHANNAH R24
DOUBLE BAR D ENTICER 48T
MARK'S MS RED REBA 60R

CE	BW	WW	YW	MILK	MCE	MWWT
2.1	4.5	69.2	103.2	20.3	1.0	54.9

Well balanced, stout and moderate. Red Reba cow family.

Exposed to Double Bar D Bankroll 507F from April 20 to June 20, 2019.

LOT
72

LOT
73DOUBLE BAR D *Sarai* 629E

• PURE BRED • POLLED • RLD 629E • PG1238329 • JUN. 04, 2017 • BW: 83 LBS.

STF ROYAL AFFAIR Z44M
DOUBLE BAR D ROYAL 526B
SS/PRS JEWEL Y9S1SVS CAPTAIN MORGAN 11Z
DOUBLE BAR D SARAI 434C
DOUBLE BAR D SARAI 9XREMINGTON LOCK N LOAD 54U
STF ONYX 451W
BMR EXPLORER
EKHCC RED JEWEL 760HARVIE JDF WALLBANGER 111X
SUNNYVALLEY BLK JENNA 88U
KS BRAVADO P68
KWA MS SF 105U

CE	BW	WW	YW	MILK	MCE	MWWT
4.6	3.5	71.0	107.8	19.3	1.9	54.8

Homozygous Polled

Power and rib shape. Setting up a beautiful udder, as all 526B daughters do. Excellent Morgan daughter going back to KWA 105U, Shades' high seller. AI bred to W/C Bankroll 811D on April 2, 2019. Exposed to Double Bar D Bankroll 507F from April 20 to June 20, 2019.

LOT
74DOUBLE BAR D *Kassie* 635E

• PURE BRED • POLLED • RLD 635E • PG1238335 • JUN. 11, 2017 • BW: 84 LBS.

SVS CAPTAIN MORGAN 11Z
DOUBLE BAR D CAPTIVE 446C
DOUBLE BAR D LASS 674XDOUBLE BAR D GUNNER 123U
DOUBLE BAR D KASSIE 451Z
DOUBLE BAR D KASSIE 226UHARVIE JDF WALLBANGER 111X
SUNNYVALLEY BLK JENNA 88U
WHEATLAND RED HUMMER 608S
DOUBLE BAR D LASS 187TTNT ACCELERATOR S226
LORNA'S BLACK MARINA 110M
BDS PREMIUM 412P
MSS KATHERINE 8K

CE	BW	WW	YW	MILK	MCE	MWWT
6.0	3.6	71.2	107.8	26.4	4.8	62.0

Homozygous Polled

Only Captive daughter in sale and she's a good one! Dark red, power type of heifer that looks like she'll be a herd bull factory. AI bred to W/C Bankroll 811D on April 7, 2019. Exposed to Westway Scarface 71F from April 20 to June 25, 2019.

LOT
75DOUBLE BAR D *Younique* 530F

• PURE BRED • POLLED • RLD 530F • APPLIED FOR • FEB. 02, 2018 • BW: - LBS.

WHEATLAND HIGHVOLTAGE 122Y
WHEATLAND CIRCUIT BREAKER
WHEATLAND LADY 81XCMS NICKLEBACK 922W
IRCC YOUNIQUE 119Y
INDIAN RIVER SPARKLE WORKSWHEATLAND PREDATOR 922W
WHEATLAND LADY 736 T
STF DOMINANCE T171
WHEATLAND LADY 902JTNT TOP GUN R244
LFE DESTINY 148M
CNS DREAM ON L186
INDIAN-RIVER MONA 203M

CE	BW	WW	YW	MILK	MCE	MWWT
8.5	2.6	69.3	101.3	22.3	5.6	57.0

Moderate in frame but very correct and stout in type. Dam is the outstanding IRCC 119Y.

AI bred to W/C Bankroll 811D on April 15, 2019. Exposed to Westway Scarface 71F from April 20 to June 25, 2019.

Sires



W/C Bankroll 811D



VCL LKC Dagger 605D



KWA Law Maker 59C



MFI Jeremiah 9022 (Juggernaut)



JB CDN Washington 1476



Double Bar D Banker



Starwest POL Batman



SBSF Ironman 29B



Swan Lake Big Red 85 B



SVS Captain Morgan 11Z



Ruby's Turnpike 771E



Double Bar D Confidence 179D



Double Bar D Avenger 190D

Service Sires



A DOUBLE BAR D *Batman* 216E

• FULL BLOOD • POLLED • RLD 216E • P1238228 • MAY 28, 2017 • BW: 87 LBS.

DOUBLE BAR D SPITFIRE 20X
STARWEST POL BATMAN
FGAF SHEENA 843Y

MFI JEREMIAH 9022
DOUBLE BAR D PEGNER 146B
WLSF PEGNER 5TH

DOUBLE BAR D EVEREST 103U
VIRGINIA MS TREASURE 4T
ALLM COLOSSAL 25U
ANCHOR D SHEENA 138S

GIBBONS JEREMIAH
MFI PETRA 2093
SALMON ARM HAUNLO 3M
WLSF PEGNER

CE	BW	WW	YW	MILK	MCE	MWWT
5.1	4.6	69.8	99.6	32.5	1.1	67.4



B ANCHOR D *Motown* 865E

• FULL BLOOD • HORNED • ZDS 865E • T1248299 • DEC. 25, 2017 • BW: 100 LBS.

SIBELLE DIRTY HARRY 25Z
FGAF FRENCH ATTACK 010C
VIRGINIAS JANE WEST

R-FIVE MALTESE
FGAF PRECIOUS THING 402T
FGAF SHANTI 121P

VIRGINIA WALKER 97W
SIBELLE GOLDA
CHAMPS ROMANO
VIRGINIA'S MS WEST PATTY
GIDSCO APPOLLO 3F
FGAF SHE'S ALL THAT 724K
SHAWACRES JAHARI 50L
FGAF LEGEN'S CHARM 743K

CE	BW	WW	YW	MILK	MCE	MWWT
3.2	5.2	82.5	122.3	30.8	1.2	72.1



C WFL *Scarface* 71F

• PURE BRED • POLLED • WFL 71F • BPG1245763 • FEB. 04, 2018 • BW: 67 LBS.

SPRINGCREEK LINER 56U
SPRINGCREEK BLUE CHIP 9D
SPRINGCREEK TARA 111R

MR HOC BROKER
WFL MS ELEGANCE 403B
LFE MARIAH 112M

RCC/TCF LINE DRIVE M181
NEVAS L93
MSR KANSAS TANK 235M
SPRINGCREEK BROOKE 38L
SVF STEEL FORCE S701
JM BF H25
HC POWER DRIVE 88H
TCCO CENTERFOLD 06K

CE	BW	WW	YW	MILK	MCE	MWWT
5.7	4.3	79.4	118.1	24.9	5.1	64.6

D DOUBLE BAR D *Bankroll* 507F

• PUREBRED • POLLED • RLD 507F • BPTG1249993 • JAN. 29, 2018 • BW: 87 LBS.

W/C LOADED UP 1119Y
W/C BANKROLL 811D
 MISS WERNING KP 8543U

SVS CAPTAIN MORGAN 11Z
DOUBLE BAR D SUSAN 558B
 WLE CRUISIN SUSAN T26

REMINGTON LOCK N LOAD 54U
 AUBREYS BLACK BLAZE III
 WAGR DREAM CATCHER 03R
 MISS WERNING 534R
 HARVIE JDF WALLBANGER 111X
 SUNNYVALLEY BLK JENNA 88U
 CNS DREAM ON L186
 MISS CHLOE RF26K

CE	BW	WW	YW	MILK	MCE	MWWT
14.2	1.1	63.9	91.0	21.2	8.4	53.2



D

E W/C *Bankroll* 811D

• PUREBRED • POLLED • RLD 811D • BPTG1217569 • JAN. 30, 2016

REMINGTON LOCK N LOAD 54U
W/C LOADED UP 1119Y
 AUBREYS BLACK BLAZE III

WAGR DREAM CATCHER 03R
MISS WERNING KP 8543U
 MISS WERNING 534R

REMINGTON ON TARGET 2S
 BAR 15 MISS KNIGHT78E-51G
 3C MACHO M450 BZ
 BLAZE IV 1P
 CNS DREAM ON L186
 3C MELODY M668 BZ
 R&R WAREHOUSE K609
 MISS WERNING 934J

CE	BW	WW	YW	MILK	MCE	MWWT
15.5	0.3	65.8	90.3	24.6	8.1	57.5



E

F WS *Proclamation* E202

• PUREBRED • POLLED • FGN 202E • BPTG1248522 • FEB. 21, 2017

TRIPLE C SINGLETARY S3H
CCR COWBOY CUT 5048Z
 CCR MS 4045 TIME 7322T

CLRS GRADE-A 875 A
WS MISS SUGAR C4
 WS ANISE A71

HOOKS SHEAR FORCE 38K
 LUCAS JOSIE 19K
 HTP SVF IN DEW TIME
 CCR MS PRETTY 4045P
 MCM TOP GRADE 018X
 HOOK'S XCELLENCE 87X
 WS HOT BEEF X38
 WS MISS BRANDY T28

CE	BW	WW	YW	MILK	MCE	MWWT
17.2	0.3	88.9	133.4	32.7	11.5	77.2



F

Return Undeliverable
Canadian Addresses To:
T Bar C Cattle Co. Ltd.
Box 2330
Warman, Saskatchewan S0K 4S0



Created By
Today's
Publishing