



**THE
FEMALE
FOCUS**

PRODUCTION SALE

WEDNESDAY, DECEMBER 16, 2020 - 1:00 PM

HLC SALE FACILITY, NEUDORF, SK

HOLLINGER LAND AND CATTLE



Welcome to the second edition of the Female Focus Production Sale. It is with great pleasure that we are able to host this sale again this year with our sale partner, J Square S Angus. This sale is an event that both Jordan and I have been highly anticipating since our very successful inaugural sale last December.

The bred females on offer come straight from our replacement pen. I'm confident that they will go out and work for their new owners. They are carrying service to breed leading genetics that we feel offer outstanding calving ease as well as growth and do-ability. Like last year, we have put together a few elite heifer calves that we think a lot of, so much even, that we are going to retain 1/2 Embryo Interest on two very special females. It's very tough to part with females like this but feel this is a way we can inject their genetics back into our herd.

New this year, we are excited to add an outstanding group of bred Commercial females to our sale. These females come from long time Bull customers of ours, Cam and Sandy Taylor. These females are as good as you'll find anywhere, they are deep ribbed, sound and functional heifers that come from a cow herd second to none. These are the first bred females that they have ever offered for sale in the herds 26 year history.

We want to invite you to come evaluate the cattle at your convenience and most certainly would love to have you present here with us on sale day as well. If you have any questions, please don't hesitate to contact myself, Jordan or any of our sales team. The sale will again be broadcast live on DLMS for those of you who can't join us on sale day.

Thank you again to all of our past customers. This is without a doubt one of the greatest businesses to be part of with so many great people in it.

CHAD HOLLINGER



Chad & Breanne
Trevor & Melody
Box 276 Neudorf Sk, S0A 2T0 | hollingerlandandcattle@gmail.com
Chad cell (306) 331-0302
Trevor cell (306) 728-8422
Herdsman: Mark Piller (306) 730-7170

J SQUARE S ANGUS



Welcome to the Second Annual Female Focus Production Sale. Once again, we are extremely excited to team up with our good friends at Hollinger Land and Cattle to bring you an exciting set of Angus females.

I feel the sale offering is extremely deep in quality from both us, as well as the Hollingers. The females in the sale are a result of many well thought out decisions made over many years. We have offered every bred heifer as well as a feature lot of four heifers calves sired by HF Alcatraz 60F out of our go to donor, Ellen 335A. There is a few choice lots in the sale. The reason for that is to insure our young cow population is in place to continually provide breeding stock for years to come.

All of the heifers are bred to bulls that we strongly believe in. There are many exciting matings throughout the offering to bulls like HF Alcatraz 60F, Sitz Major 707F, FF Black Gold JF C 19 and Conley South Point 8362. The heifers were all A'd once and then exposed to bulls that are proven calving ease herd sires that we strongly believe in.

Due to the circumstances we are all dealing with, by all means feel free to stop by any time to view the offering, you are always welcome.

Videos of the sale offering can be found online at Cattlevids.ca.

If you have any questions, please feel free to contact Myself or our sales staff at T Bar C, Bohrsen Marketing and DLMS.

JORDAN SIES



Jordan & Jacklyn, Jayla, Scottie & Ally Sies
Stuart & Kathy
Box 8, Grayson, SK S0A 1E0
sieser94@hotmail.com
C: 306-728-1299
www.jssangus.com



FEMALE FOCUS PRODUCTION SALE

Wednesday, December 16, 2020 - 1:00 PM - At the Farm, Neudorf, SK

Directions to the farm:

From Neudorf - 4 Miles west on HWY 22. North 1 mile at mile marker 12.

From HWY 10 on the west side of Duff turn and head south 10 miles.

Watch for signs.

SALE STAFF

Auctioneer

Chris Poley 306-220-5006

Ringmen

Shane Michelson 403-363-9973

Ben Wright 519-374-3335

Sale Day Phones

Chad Hollinger 306-331-0302

Trevor Hollinger 306-728-8422

Josh Hollinger 306-335-7580

Jordan Sies 306-728-1299

Roger Reynolds 306-536-6112

Mark Piller 306-730-7170

Chad Wilson 306-577-1256

Sale Consultants

Bohrson Marketing Services 306-270-6082

Scott Bohrson 403-370-3010

Matt Criddle 306-539-6934

Internet Bidding Available

DLMS
www.dlms.ca

For more information call DLMS:
Mark Shologan 780.699.5082 or
DLMS Purebred Team 780.991.3025

Insurance

Alameda Agencies Ltd. Bonnie Thompson 306-489-2258

Guest Consignor

Cam and Sandy Taylor | Trevor and Tawnya Campbell

Box 296 Wolseley, SK S0G 5H0

Cam: 306-698-2903 Trevor: 306-698-7891

Cattle photography

Jenna Loveridge Photography

VIDEOS ONLINE AT CATTLEVIDS.CA

FROM THE DESK AT T BAR...

Welcome to the 2nd Annual Female Focus Production Sale, Wednesday December 16, 2020 at the Hollinger Land and Cattle Ranch headquarters, Neudorf, Saskatchewan. This female event puts two powerful breeding programs together to offer an elite lineup of superior breeding females for your evaluation and herd improvement.

The sale offering is full of diverse genetic packages selected from their replacement pastures. Stout, broody, bred females carrying AI services to the leading sires of the Angus breed and designed to give you value added return on investments... you are a month or two from clipping that first coupon. The 2020 models exhibit a competitive nature; a nature that has a proven track record. Their genetics are dynamic and will leave their mark on the industry in the years to follow. The commercial bred heifers are a set of uniform baldies sired by Hollinger bulls and selected to make great replacement females.

Feel free to stop by either operation any time prior the sale and preview their offering, they will be pleased to give you a tour of their programs. Give Chad or Jordan a call to discuss which females will suit your program and your budget. This offering is exciting and well worth your consideration. Remember that we are nearing year end so consider your tax advantages. Plan to be with us in person or online!

During these times, feel free to call anyone on our T Bar C team to discuss or purchase any of the cattle offered. We will be pleased to assist in a professional and confidential manner.

CHRIS POLEY



Sale Management

T Bar C Cattle Co. Ltd

Box 2330

Warman, Saskatchewan S0K 4S0

P: 306-933-4200 info@tbarc.com



Chris Poley
306-220-5006



Shane Michelson
403-363-9973



Ben Wright
519-374-3335

VIEW THE CATALOGUE ONLINE AT WWW.BUYAGRO.COM

THE FEMALE FOCUS PRODUCTION SALE



HLC EVENING TINGE 723H



• Female • 2172921 • CHD 723H • 03/02/2020
• BW: 90 lbs.

EPDS	CE	BW	WW	YW	Milk
	-7.5	4.3	60	98	26

SMA WATCHOUT 482
CONLEY EXPRESS 7211
DPL SANDY 3040

LEACHMAN SAUGAHATCHEE 3000C
GF EVENING TINGE 81A
JL EVENING TINGE 8001

SILVEIRAS WATCHOUT 0514
2K BEAUTY 961
SILVEIRAS STYLE 9303
K N C CABIN CREEK SANDY 804
N BAR EMULATION EXT
LEACHMAN B C 7100
JUSTAMERE 253 BADA BING 406S
HF EVENING TINGE 57R

Here is a female that has been admired by many that have toured the cattle throughout the summer and into the fall. She is one of the most unique females to walk the pastures here at HLC. She is the combination of the new fresh genetics in the \$400,000 Express with the predictability of breed legends like Saugahatchee 3000C. This female is exceptional both on paper as well as in the flesh. We think very highly of this female and anxiously look forward to her future.

Retaining 1/2 embryo interest.



Conley Express 7211 - Sire



GF Evening Tinge 81A - Dam



2

HLC MISS MARION 667H

LOT 2

• Female • 2156823 • CHD 667H • 20/01/2020
• BW: 78 lbs.

EPDS	CE	BW	WW	YW	Milk
	9.5	1.2	54	94	52

PLATTEMERE WEIGH UP K360
STEVENSON TURNING POINT
STEVENSON PRIDE I167X

MERIT HEAVY METAL 5093
HLC MISS MARION 351F
HLC 101 JEWEL 654C

SITZ UPWARD 307R
BARBARA OF PLATTEMERE 337
S A V BISMARCK 5682
FSHK PRIDE 180
EXAR ONE-IRON 3889B
MERIT PRIDE 8822
SANKEYS JUSTIFIED 101
DOUBLE D MISS MARION 20R

If you follow our program or have been to one of our past sales, you have probably heard one of us talk about 20R. The infamous Miss Marion 20R donor has put multiple sons into some of the top purebred and commercial herds across the country. Every direct daughter has been retained in our herd, this being only the second female descendant to be sold. She is sired by none other than Stevenson Turning Point, a bull that made history last fall, siring the only bull to ever win both Canadian Western Agribition and the Denver National Western Stock Show in the same year. This female is the real deal, one that we think a lot of.

Retaining 1/2 embryo interest.



Stevenson Turning Point - Sire



HLC CSI LADY 749H

• Female • 2157230 • CHD 749H • 05/02/2020
• BW: 63 lbs



EPDS	CE	BW	WW	YW	Milk
-0.5	2.1	50	84	16	

SILVEIRAS STYLE 9303
SILVEIRAS S SIS GQ 2353
K N C CABIN CREEK SANDY 804

HOOVER NO DOUBT
PEAK DOT LADY 504F
LADY OF PEAK DOT 705Y

GAMBLES HOT ROD
SILVEIRAS ELBA 2520
B C LOOKOUT 7024
K N C CABIN CREEK SANDY
MOGCK BULLSEYE
MISS BLACKCAP ELLSTON J2
S A V IRON MOUNTAIN 8066
LADY OF PEAK DOT 782L

An ultra fancy daughter of GQ, one we think highly of. She is a paternal sister to our recent Supreme Champion Bull at the Lloydminster Stockade Roundup, HLC GQ 278F. GQ has surpassed our expectations and added some tremendously functional females to our herd. This heifer's dam is a beautiful uddered Hoover No Doubt daughter.



HLC GQ 278F - Paternal Sibling



Silveiras S SIS GQ 2353 - Sire

HLC BLACKCLASS 674H

• Female • 2156826 • CHD 674H • 21/01/2020
• BW: 60 lbs.



EPDS	CE	BW	WW	YW	Milk
7.0	0.3	51	89	16	

ELLINGSON PLATEAU 1155
ELLINGSON TOP SHELF 5050
EA EMBLYNETTE 9203

MICH MOB BOSS 1425
HLC BLACKCLASS 363F
HLC BLACKCLASS 7X

LT TERRITORY 5824 OF EA
EA BLACKCLASS 6938
S A V FINAL ANSWER 0035
EA EMBLYNETTE 447
EXAR CLASSEN 1422B
RR ENVIOUS BLACKBIRD 4487
SPRUCE VIEW RENOVATOR 182U
DOUBLE D 6M BLACKCLASS 43R

HLC Blackclass 674H is the resulting calf of a 2019 bred heifer purchase from this very sale. Her dam, 363F, was a sale feature in last year's sale purchased by Barry Baczuk of Junior Cattle Company. I love this female for her length of body, ultra cool front end and big stout hip. If you are looking for a female that could be an excellent junior project, then make an exceptional cow, be sure to mark her in your catalogue.



Ellingson Top Shelf 5050 - Sire



HLC Blackclass 363F - Dam



An exceptional daughter of Six Mile Blackbird 25D, who was a sale feature in the 2017 Genetic Focus Sale. We partnered on this exceptional female with Dusty Rose Cattle Co. We think a lot of this young female and expect great things from this genetic combination.

AI bred to Chestnut Turning Heads 29 on May 5, 2020. Safe. Due February 11, 2021.



Six Mile Blackbird 25D - Dam



5

HLC DUSTYS BLACKBIRD 634G



• Female • 2177812 • CHD 634G • 01/04/2019
• BW: 78 lbs.

EPDS	CE	BW	WW	YW	Milk
4.5	2.7	52	93	22	

EXAR ONE-IRON 3889B
MERIT HEAVY METAL 5093
MERIT PRIDE 8822

BAR-H CROSSFIRE 63A
SIX MILE BLACKBIRD 25D
SIX MILE BLACKBIRD 149B

DAMERON FIRST CLASS
GREENS PRINCESS 1012
MERIT LUKE 3120
MERIT PRIDE 6088
S TITLST 1145
HF TIBBIE 93U
SANKEYS JUSTIFIED 101
SIX MILE BLACKBIRD 16X

HLC BLACKBERRY 619G



• Female • 2091883 • CHD 619G • 19/03/2019
• BW: 86 lbs. • ADJ WW: 653 lbs.

EPDS	CE	BW	WW	YW	Milk
2.8	56	100	19		

S A V SEEDSTOCK 4838
PEAK DOT SEEDSTOCK 122E
LASSIE OF PEAK DOT 38Z

PVF INSIGHT 0129
GGA BLACKBERRY 22E
JUSTAMERE 7965 BLACKBERRY 423U

S A V REGISTRY 2831
S A V BLACKCAP MAY 4136
S A V IRON MOUNTAIN 8066
LASSIE OF PEAK DOT 677X
S A V BRILLIANCE 8077
PVF MISSIE 790
BC 7022 RAVEN 7965
ERICA LASSIE OF RR 0751

If volume, rib shape, udder and foot quality are high on your list when selecting cattle, this one checks all of those boxes. She is super attractive, smooth shouldered and stout made. The Seedstock females are beautiful in their design and we can't wait to see them in production.

AI bred to Chestnut Turning Heads 29 on May 15, 2020. Safe. Due February 21, 2021.



6

Chestnut Turning Heads 29 - Service Sire of Lots 5 & 6



HLC QUEEN SUSAN 566G



• Female • 2091318 • CHD 566G • 12/02/2019
 • BW: 69 lbs. • ADJ WW: 553 lbs.

EPDS	CE	BW	WW	YW	Milk
3.0	1.8	37	61	19	

SANKEYS JUSTIFIED 101
 HLC SUMMIT 743D
 DOUBLE D MISS MARION 20R

COTTAGE CREEK "RUSH" 902W
 CSI QUEEN SUSAN 14Z
 CSI QUEEN SUSAN 4X

SANKEYS LAZER 609 OF 6N
 SANKEYS ERICA 525
 DOUBLE D BARDOLINE 15L
 ALLENCROFT MISS MARION 09 41E
 B C LOOKOUT 7024
 COTTAGE CRK 911J TYRA 7005'07
 BELL TITAN 46T
 NEW FORCE QUEEN SUSAN 248R

HLC HEATHER LASS 600G



• Female • 2091854 • CHD 600G • 28/02/2019
 • BW: 82 lbs. • ADJ WW: 597 lbs.

EPDS	CE	BW	WW	YW	Milk
2.0	3.5	46	77	22	

EXAR ONE-IRON 3889B
 MERIT HEAVY METAL 5093
 MERIT PRIDE 8822

MVF VRD DATELINE 5M
 PARKWOOD HEATHER LASS 92X
 HEATHER LASS OF PARKWOOD 8L

DAMERON FIRST CLASS
 GREENS PRINCESS 1012
 MERIT LUKE 3120
 MERIT PRIDE 6088
 VERMILION DATELINE 7078
 MVF LADY ANNE 30F
 CRESCENT CREEK LEGEND 148G
 PARKWOOD'S HEATHER LASS 154U



A powerhouse daughter of Heavy Metal, out of the super productive Parkwood Heather Lass 92X female. 92X is a female that never misses. No matter how we breed her it just simply works. Her superb udder quality, great foot structure and quiet nature are what we truly admire about 92X. A feature son and full brother to this great female was selected by Prime Time Cattle Co. in our 2018 bull sale where he brought \$11,000.

AI bred to Schiefelbein Rhombus 4937 on April 19, 2020. Safe. Due January 26, 2021.



Schiefelbein Rhombus 4937 - Service Sire



HLC Heavy Metal 943E - Full Brother

An exceptional daughter of Brooking Unanimous, out of the highly productive Miss Marion cow family. This female is moderate in terms of frame size, but bold in her rib and hip design. A female I truly think a lot of.

AI bred to Sankeys Justified 101 on April 22, 2020. Safe. Due January 29, 2021.



Sankeys Justified 101 - Service Sire



9

HLC MISS MARION 593G



• Female • 2091784 • CHD 593G • 24/02/2019
• BW: 84 lbs. • ADJ WW: 584 lbs.

EPDS	CE	BW	WW	YW	Milk
-3.0	4.8	46	86	18	

VISION UNANIMOUS 1418
BROOKING UNANIMOUS 6102
LADY OF PEAK DOT 476S

BANDURA MR RESPECT 63B
HLC MISS MARION 747D
DOUBLE D 91F MISS MARION 19S

VISIONTOPLINE ROYAL STOCKMAN
VISION EDELLA 665
HF POWER-UP 72N
LADY OF PEAK DOT 566N
SITZ UPWARD 307R
CHAMPION HILL EMBLYNETTE 7726
BORDER BUTTE SON OF A GUN 2'02
ALLEN CROFT MISS MARION 03 91F

HLC BLACKBIRD 577G



• Female • 2091835 • CHD 577G • 16/02/2019
• BW: 70 lbs. • ADJ WW: 595 lbs.

EPDS	CE	BW	WW	YW	Milk
3.0	2.3	51	91	19	

SANKEYS JUSTIFIED 101
HLC SUMMIT 743D
DOUBLE D MISS MARION 20R

D.S. MARVEL 901W
LLB BLACKBIRD 825D
REMITALL BLACKBIRD 648R

SANKEYS LAZER 609 OF 6N
SANKEYS ERICA 525
DOUBLE D BARDOLENE 15L
ALLEN CROFT MISS MARION 09 41E
S A V 004 DENSITY 4336
LEGEND LANE 410 ANNE 620
REMITALL MERCEDES 146M
LLB BLACKBIRD 330L

A maternal sister to the 2020 Stockade Roundup Supreme Champion Bull, HLC GQ 278F. Sired by Summit, I believe this genetic combination will be outstanding in terms of production and longevity. Carrying an early service to South Point, she will be one to watch for on sale day.

AI bred to Conley South Point 8362 on April 14, 2020. Safe. Due January 21, 2021.



Conley South Point 8362 - Service Sire



Maternal Sister to the 2020 Stockade Supreme Champion Bull



10



HLC EXQUISITE LADY 588G



• Female • 2091837 • CHD 588G • 21/02/2019
 • BW: 77 lbs. • ADJ WW: 552 lbs.

EPDS	CE	BW	WW	YW	Milk
-4.0	4.9	44	83	19	

SANKEYS JUSTIFIED 101
 HLC SUMMIT 743D
 DOUBLE D MISS MARION 20R

S A V INTERNATIONAL 2020
 LLB EXQUISITE LADY 319C
 LLB EXQUISITE LADY 319Z

SANKEYS LAZER 609 OF 6N
 SANKEYS ERICA 525
 DOUBLE D BARDOLENE 15L
 ALLENCROFT MISS MARION 09 41E
 S A V HARVESTOR 0338
 S A V EMBLYNETTE 5483
 SITZ UPWARD 9309
 LLB EXQUISITE LADY 186L

HLC SUSAN 565G



• Female • 2091881 • CHD 565G • 11/02/2019
 • BW: 67 lbs. • ADJ WW: 619 lbs.

EPDS	CE	BW	WW	YW	Milk
4.0	1.1	62	110	20	

CONNEALY COMRADE 1385
 MCCONNELL ALTITUDE 3114
 MA BEAUTY 0156

S A V RENOWN 3439
 JL SUSAN 7074
 JL SUSAN 2118

Possibly one of the most uniquely made females of the entire offering. She is super powerful, big boned, great footed and maintains a beautiful front end. If there is one service in this sale that I have been highly anticipating, this would be it. She is bred to a bull we found in Denver, a Payweight 1682 grandson. A bull I admired for his length of body, exceptional foot and depth of quarter.

Exposed to OSU Payweight Plus 9122 from April 4 to April 25, 2020. Due January 11, 2021.

CONNEALY CONSENSUS 7229
 HAPPY GEE OF CONANGA 919
 S A V 004 DENSITY 4336
 M A LUCYS TRAVELER 9859
 RITO 707 OF IDEAL 3407 7075
 S A V BLACKCAP MAY 4136
 S A V ELIMINATOR 9105
 JL SUSAN 8027



One of my favourite females in the entire offering, this female offers a unique outcross pedigree with tremendous phenotype. She's big topped, long fronted and as big ribbed as you could make one. Be sure to check her out sale day.

Exposed to HLC Stunner 453G from June 2 to August 14, 2020. Preg checked 51 days pregnant on September 21. Due early May to HLC Stunner 453G.



McConnell Altitude 3114 - Sire

Two outstanding Leading Edge daughters that are not easy to part with. Leading Edge was the \$50,000 sale feature that we were fortunate enough to be apart of, owning him with Dusty Rose Cattle. We had the misfortune of losing him with very limited semen put up. His daughters are among the best that we have ever raised here at HLC.

Exposed to Justamere 1023 Docholiday 344E from April 29 to June 2, 2020. Due end of January.



Mich Wheatland Leading Edge - Sire of Lots 13 & 14

13

HLC KINOCHTERY ANN 490G



• Female • 2091854 • CHD 490G • 25/01/2019
• BW: 82 lbs. • ADJ WW: 597 lbs.

EPDS	CE	BW	WW	YW	Milk
	-7.0	6.9	67	113	22

S A V CUTTING EDGE 4857
MICH WHEATLAND LEADING EDGE
COPPER CRK LADY 1210

S A V BULLET 0473
JL KINOCHTRY ANN 3058
JL KINOCHTRY ANN 0208

S A V HARVESTOR 0338
S A V BLACKCAP MAY 5530
EXAR LUTTON 1831
CHERRY KNOLL LADY LOLA
S A V BISMARCK 5682
S A V EMBLYNETTE 7566
S A V FOUR SEASONS 5231
LLB MISS KINOCHTRY ANN 175G

HLC MISS MARION 489G



• Female • 2091637 • CHD 489G • 24/01/2019
• BW: 93 lbs. • ADJ WW: 584 lbs. .

EPDS	CE	BW	WW	YW	Milk
	-3.0	4.8	46	86	18

S A V CUTTING EDGE 4857
MICH WHEATLAND LEADING EDGE
COPPER CRK LADY 1210

SANKEYS JUSTIFIED 101
HLC 101 JEWEL 654C
DOUBLE D MISS MARION 20R

S A V HARVESTOR 0338
S A V BLACKCAP MAY 5530
EXAR LUTTON 1831
CHERRY KNOLL LADY LOLA
SANKEYS LAZER 609 OF 6N
SANKEYS ERICA 525
DOUBLE D BARDOLENE 15L
ALLEN CROFT MISS MARION 09 41E

AI bred to Ellingson Top Shelf 5050 on April 13, 2020. Safe. Due January 20, 2021.



Ellingson Top Shelf 5050 - Service Sire

14



A moderate framed Heavy Metal daughter that is a member of the infamous Envious Blackbird cow family. These females have exceptional udders and are the type of females that will work in any program.
AI bred to KR Pacesetter on April 8, 2020. Exposed to Justamere 1023 Docholiday 344E from April 29 to June 2, 2020. Due early February.



KR Pacesetter - Service Sire

HLC ENVIOUS BLACKBIRD 607G



• Female • 2091783 • CHD 607G • 05/03/2019
 • BW: 85 lbs. • ADJ WW: 596 lbs.

EPDS	CE	BW	WW	YW	Milk
-6.0	5.5	41	73	21	

- SANKEYS JUSTIFIED 101
- HLC SUMMIT 743D
- DOUBLE D MISS MARION 20R
- PEAK DOT ENCORE 531W
- HLC ENVIOUS BLACKBIRD 178Z
- JUSTAMERE 0405 BLACKBIRD 349N

- SANKEYS LAZER 609 OF 6N
- SANKEYS ERICA 525
- DOUBLE D BARDOLENE 15
- ALLEN CROFT MISS MARION 09 41E
- DUFF ENCORE 702
- QUEEN OF PEAK DOT 536N
- ROTH REGULATOR 0405
- RR ENVIOUS BLACKBIRD 9982

HLC RUBY 563G



• Female • 2091831 • CHD 563G • 11/02/2019
 • BW: 82 lbs. • ADJ WW: 640 lbs.

EPDS	CE	BW	WW	YW	Milk
-2.0	4.6	58	98	19	

- VISION UNANIMOUS 1418
- BROOKING UNANIMOUS 6102
- LADY OF PEAK DOT 476S
- EXAR FORTIFY 1447B
- JUSTAMERE 1447 RUBY 639B
- SABA 406S RUBY 50Y

- VISION TOPLINE ROYAL STOCKMAN
- VISION EDELLA 665
- HF POWER-UP 72N
- LADY OF PEAK DOT 566N
- S A V BISMARCK 5682
- EXAR BLACKBIRD 1096
- JUSTAMERE 253 BADA BING 406S
- S.A.B.A. RUBY 15U



A super angular daughter of Unanimous that you really have to admire. She is big middled, level topped and super extended through her front one third. A full sister sold in last year's sale to Nu-Horizon Angus.
Exposed to Justamere 1023 Docholiday 344E from April 29 to August 14, 2020. Due mid-March.



CHD 435F - Full Sisiter

A real brood cow in the making. 530G is deep and soggy ribbed, the type that will lay down and crank out your next herd bull. She is setting a beautiful udder and due early to Power Chip.

AI bred to 5T Power Chip 4790 on April 18, 2020. Safe. Due January 25, 2021.



HC 101 Cross Fire 569C - Sire



5T Power Chip 4790 - Service Sire



HLC MISS QUALITY 530G



• Female • 2091316 • CHD 530G • 31/01/2019
• BW: 67 lbs. • ADJ WW: 536 lbs.

EPDS	CE	BW	WW	YW	Milk
	7.0	0.6	43	79	21

SANKEYS JUSTIFIED 101
HLC 101 CROSS FIRE 569C
JL CHARISE 3159

S A V PIONEER 7301
CSI MISS QUALITY 9Y
NEW FORCE MISS QUALITY 90S

SANKEYS LAZER 609 OF 6N
SANKEYS ERICA 525
S A V HARVESTOR 0338
JUSTAMERE 0405 CHARISE 361N
S A V FINAL ANSWER 0035
S A V BLACKBIRD 5297
BON VIEW NEW DESIGN 878
VALLEY BLOSSOM MS QUALITY 820L

HLC BLACKCAP 625G



• Female • 2091884 • CHD 625G • 23/03/2019
• BW: 70 lbs. • ADJ WW: 615 lbs.

EPDS	CE	BW	WW	YW	Milk
	2.0	2.7	48	90	20

S A V SEEDSTOCK 4838
PEAK DOT SEEDSTOCK 122E
LASSIE OF PEAK DOT 38Z
S A V ANGUS VALLEY 1867
HLC BLACKCAP 974E
JL BLACKCAP 5450

S A V REGISTRY 2831
S A V BLACKCAP MAY 4136
S A V IRON MOUNTAIN 8066
LASSIE OF PEAK DOT 677X
S A V IRON MOUNTAIN 8066
S A V MAY 2397
S A V PREDICTION 3418
JL BLACKCAP 1262

A female that is moderate in her build, but massive in her rib design. She is ultra feminine and as nice through her head and neck as you can make one. Another Seedstock daughter that will be one to find on sale day.

AI bred to Ellingson Top Shelf 5050 on May 1, 2020. Exposed to HLC Stunner 453G from June 2 to August 14, 2020. Due to the exposure for a mid-March calf.



18



Insight x Heavy Metal, a breeding combination that I feel will be outstanding in terms of production. Both the Insight and Heavy Metal daughters are beautiful uddered and females that we continue to build around. The homework is done for you on this one!
AI bred to Sankeys Justified 101 on April 21, 2020. Safe. Due January 28, 2021.



PVF Insight 0129 - Sire



Sankeys Justified 101 - Service Sire

HLC BLACKWOOD 516G



• Female • 2091875 • CHD 516G • 28/01/2019
 • BW: 75 lbs. • ADJ WW: 577 lbs.

EPDS	CE	BW	WW	YW	Milk
	1.0	3.9	55	98	24

S A V BRILLIANCE 8077
 PVF INSIGHT 0129
 PVF MISSIE 790

 MERIT HEAVY METAL 5093
 HLC BLACKWOOD 123E
 HLC 1220 BLACKWOOD 383A

S A V BISMARCK 5682
 S A V BLACKCAP MAY 5270
 P V F NEW HORIZON 001
 P V F MISS RAPTOR 024

 EXAR ONE-IRON 3889B
 MERIT PRIDE 8822
 JL WARDEN 1220
 HLC BLACKWOOD 50S

HLC JUDY 551G



• Female • 2091851 • CHD 551G • 06/02/2019
 • BW: 83 lbs. • ADJ WW: 637 lbs.

EPDS	CE	BW	WW	YW	Milk
	-3.0	4.9	52	93	18

VISION UNANIMOUS 1418
 BROOKING UNANIMOUS 6102
 LADY OF PEAK DOT 476S

 BELL NET RETURN 3U
 NORTHERN VIEW JUDY 42Y
 NORTHERN VIEW JUDY 52T

VISIONTOPLINE ROYAL STOCKMAN
 VISION EDELLA 665
 HF POWER-UP 72N
 LADY OF PEAK DOT 566N
 S A V NET WORTH 4200
 BELL MS PRIDE 16L
 NORTHERN VIEW FLYING ELIXIR70M
 SANDY BAR MISS JUDY 133L



When we talk about consistency and the ability to produce sound, functional cattle, I think about females like this. Her dam was always the no miss type, you could count on her bringing in one of the front end calves each year. We have one daughter retained in herd and truly think a lot of this female. Unfortunately, we can't keep them all and it is exciting to be able to offer front end females like this to you, our valued customers.

AI bred to Sankeys Justified 101 on April 9, 2020. Safe. Due January 16, 2020.



Sankeys Justified 101 - Service Sire

A female with as much length of body and depth of rib as any in the entire offering. She is sired by calving ease specialist, Musgrave 316 Stunner, a bull whose progeny are highly sought after for their calving ease and explosive growth curve.

AI bred to KR Pacesetter on April 21, 2020.

Safe. Due January 28, 2021.



Musgrave 316 Stunner - Sire



KR Pacesetter - Service Sire



21

HLC MS ALICE 521G

LOT 21

• Female • 2091876 • CHD 521G • 29/01/2019
• BW: 75 lbs. • ADJ WW: 649 lbs.

EPDS	CE	BW	WW	YW	Milk
	4.0	2.0	62	106	23

LD CAPITALIST 316
MUSGRAVE 316 STUNNER
MCATL BLACKBIRD 831-1378

MERIT HEAVY METAL 5093
HLC MS ALICE 165E
JL MS ALICE 3256

CONNELLY CAPITALIST 028
LD DIXIE ERICA 2053
MCATL PURE PRODUCT 903-55
MCATL BLACKBIRD 1378-573
EXAR ONE-IRON 3889B
MERIT PRIDE 8822
S A V POTENTIAL 0205
HOWE MS ALICE 155N

HLC ELBA 567G

LOT 22

• Female • 2091770 • CHD 567G • 12/02/2019
• BW: 80 lbs. • ADJ WW: 517 lbs.

EPDS	CE	BW	WW	YW	Milk
	4.0	3.1	39	68	21

EXAR ONE-IRON 3889B
MERIT HEAVY METAL 5093
MERIT PRIDE 8822

JL WARDEN 1220
HLC 1220 ELBA 301A
DOUBLE D 52M ELBA 65P

DAMERON FIRST CLASS
GREENS PRINCESS 1012
MERIT LUKE 3120
MERIT PRIDE 6088
SITZ UPWARD 307R
JL FLORESSA 8214
DOUBLE D ROLLS ROYCE 15M
DOUBLE D ELBA 52M

This female combines two of the most influential walking sires that we had the opportunity and pleasure to own. She is a Heavy Metal out of a JL Warden daughter. We had the misfortune of losing Warden after his first breeding season. He left us with an excellent set of sons as well as an outstanding set of daughters.

AI bred to Musgrave 316 Stunner on April 7, 2020. Safe. Due January 14, 2021.



Musgrave 316 Stunner - Service Sire



22



Here is a female with a ton of eye appeal and length of body. Her dam is a power cow with a perfect udder.
AI bred to Chestnut Turning Heads 29 on May 14, 2020. Safe. Due February 20, 2021.



Chestnut Turning Heads 29 - Service Sire

HLC BLACKLASS 597G



• Female • 2091636 • CHD 597G • 28/01/2019
 • BW: 86 lbs. • ADJ WW: 569 lbs.

EPDS	CE	BW	WW	YW	Milk
	-4.0	4.7	51	82	15

SANKEYS JUSTIFIED 101
HLC SUMMIT 743D
 DOUBLE D MISS MARION 20R

 EXAR PURPOSE 0050B
HLC 0050 SEDUCTION 414B
 DOUBLE D 6M BLACKLASS 43R

SANKEYS LAZER 609 OF 6N
 SANKEYS ERICA 525
 DOUBLE D BARDOLENE 15L
 ALLENCROFT MISS MARION 09 41E

 RITO 6EM3 OF 4L1 EMBLAZON
 GREENS PRINCESS 1012
 JOHNSTON BANDOLIER 170F
 DOUBLE D BLACKLASS 6M

HLC PRIDE 606G



• Female • 2179022 • CHD 606G • 04/03/2019
 • BW: 84 lbs.

EPDS	CE	BW	WW	YW	Milk
	-1.5	4.1	40	74	20

SANKEYS JUSTIFIED 101
HLC SUMMIT 743D
 DOUBLE D MISS MARION 20R

 SOO LINE YELLOWSTONE 9286
ROYAL S PRIDE 38Z
 ROYAL PRIDE 28W

SANKEYS LAZER 609 OF 6N
 SANKEYS ERICA 525
 DOUBLE D BARDOLENE 15
 ALLENCROFT MISS MARION 09 41E

 SOO LINE YELLOWSTONE 6344
 SWENCO ENCHANTRESS 20N
 S A V NET WORTH 4200
 ROYAL PRIDE 35R



These Summit daughters are some of the best we have put together. Summit himself, is exceptionally good footed and a bull who puts as much natural thickness into his calves as any bull that we have used. 606G's dam, 38Z, has a beautiful udder and is ideal in terms of frame size.
Exposed to Justamere 1023 Docholiday 344E from April 29 to June 2, 2020. Due mid-February.



Ellingson Top Shelf 5050 - Service Sire



25

HLC ENCHANTRESS CHARMER 628G



• Female • CM455002 • CHD 628G • 24/03/2019
 • BW: lbs. • ADJ WW: lbs. • ADJ YW: lbs.

EPDS	CE	BW	WW	YW	Milk

An unregistered female that you really have to love for her length of body and beautiful front end. Her dam, 2B, is a beautiful made Upward daughter with an exceptional udder. AI bred to Ellingson Top Shelf 5050 on April 13, 2020. Due January 20, 2021.

ANGUS

SITZ UPWARD 9309
 LLB ENCHANTRESS CHARMER 2B
 BIPPERTS SENORITA 532

SITZ UPWARD 307R
 SITZ BARBARAMERE NELL 2246
 A A R REALLY WINDY 1205
 KRUEGERS SENORITA 53G



1422B



136A

3 EMBRYOS

EXAR Classen 1422B X Ponderosa 1749 Blackbird 136A



EPDS	CE	BW	WW	YW	Milk
	1.0	4.3	64	105	24

DAMERON FIRST CLASS
 EXAR CLASSEN 1422B
 EXAR PRINCESS 2006
 EXAR EMBLAZON 1749B
 PONDEROSA 1749 BLACKBIRD 136A
 EXAR ENVIOUS BLACKBIRD 1719

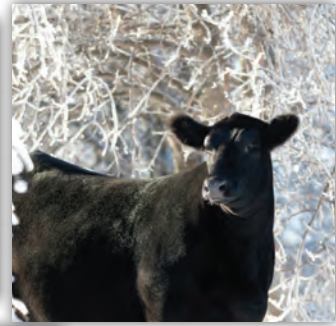
EXG RS FIRST RATE S903 R3
 DAMERON NORTHERN MISS 3114
 EXAR LUTTON 1831
 GREENS PRINCESS 1012
 RITO 6EM3 OF 4L1 EMBLAZON
 EXAR FOREVER LADY 5563
 DAMERON FIRST CLASS
 RR ENVIOUS BLACKBIRD 1920



CHD 574G - Daughter of 136A

Blackbird 136A is a female that is outstanding in terms of body dimension and boldness of rib. She is a female that is beautiful fronted and has an exceptional udder. Those of you who follow the Angus breed closely, will recognize the impact EXAR Classen has made. His daughters will go down in history as some of the most highly competitive females of all time. I believe this mating checks all the boxes and offers endless potential. Last year through this very sale a daughter of 136A was a sale highlight selling to Longview Angus for \$12,500.

CONGRATULATIONS TO KOURTNEY SCHAFF ON ALL YOUR SUCCESS WITH HLC ERICA 561G



HLC ERICA 561G

- 3rd Overall Female at Covid Clash in New Salem, ND
- Reserve Overall Female at Kidder County Show
- Reserve Overall Female at Morton County Achievement
- Reserve Overall Female at Morton County Point Show
- Supreme Overall Female at Morton County Open Show



2020 STOCKADE ROUNDUP SUPREME CHAMPION BULL HLC GQ 278F



THE FEMALE FOCUS PRODUCTION SALE

Your donation of 15% of an animal to sell in 2020 or 2021 will help grow your

Canadian Angus Foundation.



With YOUR help we will continue to further our mission and the breed.

15%
of a lot
means
a lot...

In 2019 over \$80,000 was **INVESTED** in member education, awards, bursaries and youth scholarships.

\$180,000 invested in **ANGUS** research over the last three years leveraged an additional \$360,000 in grant funding.

\$60,000+ has been invested in history and archives, including **YOUR** 2019 Canadian Angus history book.

The Canadian Angus Foundation functions to preserve and expand the Angus breed for future generations through education, youth development, scientific and market research, and historical preservation and restoration. The Canadian Angus Foundation was incorporated in 1993 and is the charitable arm of the Canadian Angus Association. Donations are tax deductible.

THE FEMALE FOCUS PRODUCTION SALE



**CHOICE
LOT**



27A

J SQUARE S ELLEN 15H

• Female • 2179433 • SIES 15H • 12/01/2020
• BW: 89 lbs. • ADJ WW: 728 lbs. .

LOT 27A

J SQUARE S ELLEN 18H

• Female • 2179599 • SIES 18H • 13/01/2020
• BW: 88 lbs. • ADJ WW: 740 lbs.

LOT 27B



27B

MAY-WAY BREAKOUT 1310
HF ALCATRAZ 60F
HF MAYFLOWER 191Z

AVF BREAKOUT 5409
MAY-WAY LADY BANDO 086
HF TIGER 5T
HF MAYFLOWER 78P
TC FREEDOM 104
J SQUARE S ELLEN 335A
MVF ELLEN 26N

CONNEALY FOREFRONT
T C RUBY 9095
GDAR SVF TRAVELER 234D
MVF ELLEN 111J

EPDS	CE	BW	WW	YW	Milk
	4.5	1.9	49	87	34

We have marketed numerous females in the past but this lot may be the most exciting to date. The combination of the Alcatraz and our great donor J Square S Ellen 335A is proving to be a great mating. The bull calves are the highlight of our bull pen and these four full sisters are a real standout.

Their dam, Ellen 335A was acquired from the historic MVF dispersal numerous years ago. Since then she raised two daughters that have sold through the Power and Perfection Sale at Agribition to Belvin Angus and Nolan Glover. Both those daughters had excellent show careers each collecting numerous banners along the way.

As far as I am concerned, HF Alcatraz needs no introduction. He was the high selling Angus bull in Canada in 2019 demanding \$200,000. His calves are correct, extremely hairy, the bulls are maturing exceptionally and the heifers are destined to be great mother cows.

I believe all four sisters are going to be great cows. Each day I have a different favorite and don't think the choice will be easy selecting your pick.

Offering choice on Lots 27 A,B,C and D



J SQUARE S ELLEN 21H

LOT 27C

- Female • 2179519 • SIES 21H • 15/01/2020
- BW: 90 lbs. • ADJ WW: 748 lbs.

J SQUARE S ELLEN 26H

LOT 27D

- Female • 2179474 • SIES 26H • 16/01/2020
- BW: 89 lbs. • ADJ WW: 722 lbs. • ADJ YW: lbs.



3 EMBRYOS

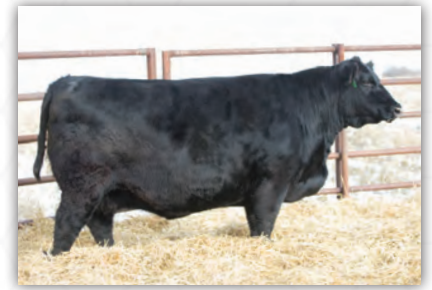
CONLEY SOUTH POINT 8362 X J SQUARE S ELLEN 335A

LOT 27E

(PEP)PDS	CE	BW	WW	YW	Milk
	8.0	2.0	51	85	28

STEVENSON TURNING POINT
CONLEY SOUTH POINT 8362
P R LADY 909 4200-587

TC FREEDOM 104
J SQUARE S ELLEN 335A
MVF ELLEN 26N



J Square 335A - Dam



HF Alcatraz 60F - Sire



SIES 506C



SIES 715E



Conley South Point - Embryo Sire

PLATTEMERE WEIGH UP K360
STEVENSON PRIDE 1167X
S A V NET WORTH 4200
P R 587 205-537
CONNEALY FOREFRONT
T C RUBY 9095
GDAR SVF TRAVELER 234D
MVF ELLEN 111J

CHOICE LOT



Triple L J&S Forever Lady 301Y- Dam of 905G, 926 G & 927G



Pleasant Valley Lute 1207- Sire of 905G

J SQUARE S FOREVER LADY 905G

LOT 28A

• Female • 2125508 • SIES 905G • 05/01/2019
• BW: 64 lbs. • ADJ WW: 682 lbs. • ADJ YW: 1005 lbs.

EPDS	CE	BW	WW	YW	Milk
8.0	-0.1	51	92	23	

PLAINVIEW LUTTON E102
PLEASANT VALLEY LUTE 1207
CHERRY KNOLL ELSA 8014

HF TIGER 5T
TRIPLE L J&S FOREVER LADY 301Y
GDAR FOREVER LADY 9136

EXAR LUTTON 1831
PLAINVIEW PRIDE C123
H S A F BANDO 1961
ELSA OF CONANGA 868 1112
HF KODIAK 5R
HF ECHO 84R
G D A R ROYCE 131
G D A R FOREVER LADY 223

J SQUARE S RUTH 906G

LOT 28B

• Female • 2125568 • SIES 906G • 05/01/2019
• BW: 80 lbs. • ADJ WW: 760 lbs. • ADJ YW: 1055+lbs.

EPDS	CE	BW	WW	YW	Milk
6.0	2.9	54	101	28	

S A V 8180 TRAVELER 004
S A V 004 DENSITY 4336
S A V MAY 7238

SITZ UPWARD 307R
NORTHERN VIEW RUTH 82Z
NORTHERN VIEW RUTH 84S

SITZ TRAVELER 8180
BOYD FOREVER LADY 8003
LEACHMAN RIGHT TIME
S A R PROSPECTOR MAY 9124
CONNEALY ONWARD
SITZ HENRIETTA PRIDE 81M
HYLINE RIGHT WAY 781
CRESCENT CREEK RUTH 6F

AI bred to Conley South Point 8362 on April 15, 2020. Exposed to VNDY TCCO Toonie 801F from April 29 to July 1, 2020. Favorable to AI or first exposure.

AI bred to HF Alcatraz 60F on April 15, 2020. Exposed to VNDY TCCO Toonie 801F from April 29 to July 1, 2020. Favorable to AI or first exposure.



S A V 004 Density 4336 - Sire of 906G



Northern View Ruth 82Z - Dam of 906G

The plan last year at weaning was that we were not going to sell either of these heifers but after thinking about it and numerous questions from breeders wondering if we were selling any Forever Lady or Ruth females, we decided to let you choose on this pair of bred heifers.

We purchased Forever Lady in 2011 out of the Masterpiece Sale from our good friends, Randy Tetzlaff and Jason George. I always knew she was going to have a big impact on our breeding program. She currently has 22 progeny registered to her name and five females in this sale go back to her.

SIES 905G is the result of a very successful flush we did a few years back. She is moderate like her dam, deep hairy and setting a beautiful udder. She is favorable to the Agribition and NWSS Champion, Conley South Point.

The Ruth cow family started with the purchase of Northern View Ruth 82Z out of the Power and Perfection Sale during Agribition in 2013 from the Frick Family at Duff, SK. I always thought this would be a foundation cow family and since the day of our purchase I haven't been disappointed. Last year one of our highlights in the sale was a pair of full sisters out of 82Z. CSI Angus was the winning bidder and reports are that her first calf is very good.

SIES 906G is built just like her dam. She is long, deep and very sound. She is going to develop into a great mama cow. She is favorable to Alcatraz which is going to be a very exciting first calf.

**CHOICE
LOT**



J SQUARE S HEROINE 912G

LOT 29A

• Female • 2125677 • SIES 912G • 10/01/2019
• BW: 83 bs. • ADJ WW: 622 lbs. • ADJ YW: 972 lbs.

EPDS	CE	BW	WW	YW	Milk
	5.0	3.5	48	80	24

AI bred to HF Alcatraz 60F on April 14, 2020. Exposed to VNDY TCCO Toonie 801F from April 29 to July 1, 2020. Favorable to AI.

J SQUARE S HEROINE 915G

LOT 29B

• Female • 2125678 • SIES 915G • 11/01/2019
• BW: 88 bs. • ADJ WW: 680 lbs. • ADJ YW: 990 lbs.

EPDS	CE	BW	WW	YW	Milk
	5.0	4.2	49	82	24

AI bred to HF Alcatraz 60F on April 20, 2020. Exposed to VNDY TCCO Toonie 801F from April 29 to July 1, 2020. Favorable to AI.

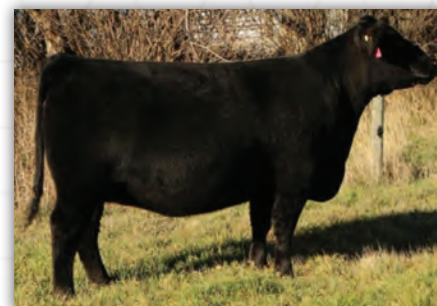
J SQUARE S HEROINE 914G

LOT 29C

• Female • 2125676 • SIES 914G • 10/01/2019
• BW: 85 bs. • ADJ WW: 710 lbs. • ADJ YW: 974 lbs.

EPDS	CE	BW	WW	YW	Milk
	5.0	4.0	49	82	24

AI bred to HF Alcatraz 60F on April 15, 2020. Exposed to VNDY TCCO Toonie 801F from April 29 to July 1, 2020. Favorable to first exposure.



Merit Heroine 5033C- Dam of 912G, 915G & 914G

THE FEMALE FOCUS PRODUCTION SALE

S A V 8180 TRAVELER 004
S A V 004 DENSITY 4336
S A V MAY 7238

SITZ TRAVELER 8180
BOYD FOREVER LADY 8003
LEACHMAN RIGHT TIME
S A R PROSPECTOR MAY 9124

EXAR ONE-IRON 3889B
MERIT HEROINE 5033C
MERIT HEROINE 7221

DAMERON FIRST CLASS
GREENS PRINCESS 1012
DWAJO DUTCH 65P
MERIT HEROINE 9172

We are offering choice of these three outstanding Density daughters who are all very similar in type and kind. Merit Heroine 5033C was purchased as the high seller from the Touch of Class sale in 2016 from Merit Cattle Company. We managed to flush her at a young age and got these three heifers. Unfortunately we lost her this spring. "Maggy" as the Merit Crew called her was a beautiful cow; long made, angular, good footed and an impeccable udder. She was a cow to build upon. Density is well known as a female maker and it is no secret around here that we really like our Density females. As you go through our offering you will notice a strong Density influence. We are selling two of the three full sisters on sale day. Their mating's to Alcatraz is definitely exciting.



This is a royally bred female that is sure to catch your eye. The Density x Bismark combo never seems to disappoint. Pride is a very well balanced female, soggy middled and extends very nicely through her front end. She is developing a beautiful udder and does have a titch of white showing. Take a good look at this well made Density daughter.

AI bred to HF Alcatraz 60F on April 22, 2020. Exposed to VNDY TCCO Toonie 801F from April 29 to July 1, 2020. Favorable to first exposure.



Northernview Pride 1Z - Dam of 903G

J SQUARE S PRIDE 903G



• Female • 2111728 • SIES 903G • 03/01/2019
 • BW: 75 lbs. • ADJ WW: 650 lbs. • ADJ YW: 974 lbs.

EPDS	CE	BW	WW	YW	Milk
8.0	0.8	37	54	19	

S A V 8180 TRAVELER 004
 S A V 004 DENSITY 4336
 S A V MAY 7238

S A V BISMARCK 5682
 NORTHERNVIEW PRIDE 1Z
 PRIDE OF BRYNTERION 9P

SITZ TRAVELER 8180
 BOYD FOREVER LADY 8003
 LEACHMAN RIGHT TIME
 S A R PROSPECTOR MAY 9124
 G A R GRID MAKER
 S A V ABIGALE 0451
 BLACKTOF T BANDOLIER 5M
 KENOSEE PARK PRIDE 31G

J SQUARE S MISS TRADITION 911G



• Female • 2111731 • SIES 911G • 09/01/2019
 • BW: 82 lbs. • ADJ WW: 696 lbs. • ADJ YW: 1020 lbs.

EPDS	CE	BW	WW	YW	Milk
9.0	1.5	48	85	18	

S A V 8180 TRAVELER 004
 S A V 004 DENSITY 4336
 S A V MAY 7238

HOOVER DAM
 JOHNSTON MISS TRADITION 807Z
 JOHNSTON MD QUEEN 05X

SITZ TRAVELER 8180
 BOYD FOREVER LADY 8003
 LEACHMAN RIGHT TIME
 S A R PROSPECTOR MAY 9124
 SYDGEN C C & 7
 ERICA OF ELLSTON C124
 SYDGEN MANDATE 6079
 JOHNSTON 308M QUEEN 838U



This is a beautiful Density daughter out of a cow who came to us from Alvin Frick. Her dam is an extremely deep bodied Hoover Dam cow that has a beautiful udder. Cross her with the historic S A V Density bull and this is exactly what I expected. 911G is moderate and also very deep bodied. She has a beautiful head and is setting a very nice udder. Mated early to Alcatraz, take a good look here.

AI bred to HF Alcatraz 60F on April 6, 2020. Exposed to VNDY TCCO Toonie 801F from April 20 to July 1, 2020. Favorable to AI.



Johnston Miss Tradition 807Z - Dam of 911G

1G is a standout brood cow in the making offered by the great folks at AT Angus. Tom Lamont and Alvin Frick are very well known in the Angus breed and always bring something good to town. This summer when deciding on what they should do with this heifer, I said "why don't we put her in the sale." So here she is. Her dam was purchased from us as one of the high sellers in Keystone Classic in 2017. She is a daughter of the great Tibbie cow family tracing back to the MVF herd. She is bred to the Black Gold bull, who has bred really well here, and I feel the calf should be no different.

AI bred to FF Black Gold JF C19 on April 20, 2020. Exposed to VNDY TCCO Toonie 801F from April 29 to July 1, 2020. Favorable to AI or first exposure



J Square S Tibbie 625D- Dam of 1G as yearling



32

AT TIBBIE 1G



• Female • 2079503 • ATA 1G • 26/01/2019
• BW: 86 lbs. • ADJ WW: 698 lbs. • ADJ YW: lbs.

EPDS	CE	BW	WW	YW	Milk
5.0	2.8	46	83	22	

S A V 8180 TRAVELER 004
S A V 004 DENSITY 4336
S A V MAY 7238

HLC 1220 SLOW RIDE 266A
J SQUARE S TIBBIE 625D
J SQUARE S TIBBIE 16Y

SITZ TRAVELER 8180
BOYD FOREVER LADY 8003
LEACHMAN RIGHT TIME
S A R PROSPECTOR MAY 9124
JL WARDEN 1220
HLC MISS MARION 5X
HF TIGER 5T
MVF TIBBIE 969T

J SQUARE S GEORGINA 951G



• Female • 2111752 • SIES 951G • 12/02/2019
• BW: 84 lbs. • ADJ WW: 612 lbs. • ADJ YW: 970 lbs.

EPDS	CE	BW	WW	YW	Milk
2.0	3.7	61	106	21	

S A V RESOURCE 1441
J SQUARE S BALLER 711E
J SQUARE S TIBBIE 22Y

PLEASANT VALLEY LUTE 1207
WILBAR GEORGINA 743C
WILBAR GEORGINA 17P

RITO 707 OF IDEAL 3407 7075
S A V BLACKCAP MAY 4136
SITZ UPWARD 307R
MVF TIBBIE 616S
PLAINVIEW LUTTON E102
CHERRY KNOLL ELSA 8014
SANDY BAR ADVANTAGE 43M
WILBAR GEORGINA 706M

This is a heifer I am really proud to offer. She is big boned, level topped and yet very attractive. Numerous visitors have found this heifer throughout the year. Her dam was a \$9,750 purchase from the Power and Perfection Sale years prior. Last year a maternal sister sold to Wilbar Cattle Co. This year's Alcatraz heifer calf from 743C is very promising and likley won't leave the farm. Solid breeding in this female.

AI bred to FF Black Gold JF C19 on April 15, 2020. Exposed to J Square S Black Gold 900G from May 8 to July 1, 2020. Favorable to AI or first exposure.



Wilbar Georgina 743C- Dam of 951G



J Square S Baller 711E- Sire to 951G



33



J SQUARE S MS TRADITION 907G



• Female • 2111730 • SIES 907G • 06/01/2019
 • BW: 82 lbs. • ADJ WW: 746 lbs. • ADJ YW: 1085 lbs.

EPDS	CE	BW	WW	YW	Milk
	10.0	-0.2	63	108	20

CONNEALY BLACK GRANITE
 FF BLACK GOLD JF C19
 JF BARBARAMERE Y3

B P F SPECIAL FOCUS 504
 NORTHERN VIEW MS TRADITION 30B
 JOHNSTON MISS TRADITION 807Z

CONNEALY CONSENSUS 7229
 EURA ELGA OF CONANGA 9109
 CONNEALY RIGHT ANSWER 746
 JF BARBARAMERE W32
 MYTTY IN FOCUS
 B P F BLACK CASH 341
 HOOVER DAM
 JOHNSTON MD QUEEN 05X

A nice made, long bodied heifer from our Black Gold herd sire. She is from a very productive Special Focus daughter whom as a pair were very impressive together last summer. She is favorable to the calving ease Major bull.

AI bred to SITZ Major 707F on April 22, 2020. Exposed to VNDY TCCO Toonie 801F from April 29 to July 1, 2020. Favorable to AI or first exposure.



J SQUARE S BLACKCAP 909G



• Female • 2111762 • SIES 909G • 08/01/2019
 • BW: 78 lbs. • ADJ WW: 638 lbs. • ADJ YW: 916 lbs.

EPDS	CE	BW	WW	YW	Milk
	8.0	-2.0	46	79	18

CONNEALY BLACK GRANITE
 FF BLACK GOLD JF C19
 JF BARBARAMERE Y3

SOO LINE MOTIVE 9016
 J SQUARE S BLACKCAP 500C
 NORTHERN VIEW BLACKCAP 30N

CONNEALY CONSENSUS 7229
 EURA ELGA OF CONANGA 9109
 CONNEALY RIGHT ANSWER 746
 JF BARBARAMERE W32
 HF KODIAK 5R
 TLA BEAUTY 5R
 N V GOLDEN ELIXIR 73L
 CALLAMERE BLACKCAP 10G

909G is another Black Gold daughter that I really like. She is moderate, tanky and dropping a great udder. Her granddam was one of those cows who never missed. She had two daughters sell though the Masterpiece Sale at Agribition. A maternal sister sold to D & N Livestock in last year's sale.

AI bred to SITZ Major 707F on April 15, 2020. Exposed to VNDY TCCO Toonie 801F from April 29 to July 1, 2020. Favorable to AI.



J SQUARE S BLACKCAP 986G



• Female • Applied For • SIES 986G • 04/01/2019
 • BW: 82 lbs. • ADJ WW: 746 lbs. • ADJ YW: 1060 lbs.

EPDS	CE	BW	WW	YW	Milk
	8.0	-2.0	46	79	18

CONNEALY BLACK GRANITE
 BLACK GOLD JF C19
 JF BARBARAMERE Y3

FF STIMULANT Y40
 J SQUARE S BLACKCAP 92D
 J SQUARE S BLACKCAP 80W

CONNEALY CONSENSUS 7229
 EURA ELGA OF CONANGA 9109 FF
 CONNEALY RIGHT ANSWER 746
 JF BARBARAMERE W32
 CONNEALY STIMULUS 8419
 FF LUCY U25
 SAF PHANTOM
 NORTHERN VIEW BLACKCAP 9T

We have used a couple of bulls from Flesch Angus and both of them are featured in her pedigree. 986G is a really well made, moderate framed heifer. She is a 3/4 sister to Lot 42 - SIES 987G. The consistency of these Black Gold heifers impresses me everyday.

AI bred to SITZ Major 707F on April 20, 2020. Exposed to VNDY TCCO Toonie 801F from April 29 to July 1, 2020. Favorable to AI.

**CHOICE
LOT**



37A

J SQUARE S FOREVER LADY 926G



• Female • 2111739 • SIES 926G • 17/01/2019
• BW: 62 lbs. • ADJ WW: 644 lbs. • ADJ YW: 1005 lbs.

EPDS	CE	BW	WW	YW	Milk
	9.5	1.0	53	104	26

AI bred to SITZ Major 707F on April 7 and April 29, 2020. Exposed to VNDY TCCO Toonie 801F from May 11 to July 1, 2020. Favorable to second AI date.

A A R TEN X 7008 S A
EXAR RESISTOL 3710B
SITZ HENRIETTA PRIDE 643T

MYTTY IN FOCUS
A A R LADY KELTON 5551
CONNEALY ONWARD
SITZ HENRIETTA PRIDE 81M

J SQUARE S FOREVER LADY 927G



• Female • 2111881 • SIES 927G • 17/01/2019
• BW: 63 bs. • ADJ WW: 672 lbs. • ADJ YW: 974 lbs.

EPDS	CE	BW	WW	YW	Milk
	9.5	1.0	53	104	26

AI bred to SITZ Major 707F on April 22, 2020. Exposed to VNDY TCCO Toonie 801F from April 29 to July 1, 2020. Favorable to AI.

HF TIGER 5T
TRIPLE L J&S FOREVER LADY 301Y
GDAR FOREVER LADY 9136

HF KODIAK 5R
HF ECHO 84R
G D A R ROYCE 131
G D A R FOREVER LADY 223

The only Resistol females in our offering but I think they have a lot to offer. Last year our Resistol females were very well received and from reports, produced very well. Our high seller was a Resistol daughter that sold to Devon Donald. He is a sire that is true to his numbers and his progeny have an attractive look to them. The dam of these heifers is really leaving her mark here. Forever Lady 301Y currently has 22 progeny registered to her name and five females in this sale go back to her. She is a direct daughter of GDAR Forever Lady 9136, a cow well known at Eastondale Angus and Johnson Livestock. Her sons are always at the top of the bull pen. She is moderate, yet tanky, has an impeccable udder and is extremely quiet. There is a reason we keep flushing her. We want to make it known these full sisters are twins. We believe there is mounds of potential to becoming top producing cows in the future and are retaining one of the two for our herd.

**CHOICE
LOT**



37B

3 EMBRYOS



CONLEY SOUTH POINT 8362 X TRIPLE L J&S FOREVER LADY 301Y

EPDS	CE	BW	WW	YW	Milk
	11.5	0.6	52	95	28

STEVENSON TURNING POINT
CONLEY SOUTH POINT 8362
P R LADY 909 4200-587

PLATTEMERE WEIGH UP K360
STEVENSON PRIDE I167X
S A V NET WORTH 4200
P R 587 205-537



Triple L J&S Forever Lady 301Y- Dam of 905G, 926 G & 927G



Conley South Poin - Sire to embryos

HF TIGER 5T
TRIPLE L J&S FOREVER LADY 301Y
GDAR FOREVER LADY 9136

HF KODIAK 5R
HF ECHO 84R
G D A R ROYCE 131
G D A R FOREVER LADY 223

THE FEMALE FOCUS PRODUCTION SALE



This Black Gold daughter is out of one of the most consistent cows in our herd. Every year 1067 brings in a top end calf whether it is a bull or a heifer. Her progeny have sold to Swan Hills Ranch, Wilbar Cattle Co. and we have two daughters in our herd. We mated all of our Black Gold daughters to Major, and she is favorable to him. Could be very exciting.
AI bred to SITZ Major 707F on April 22, 2020.
Exposed to VNDY TCCO Toonie 801F from April 29 to July 1, 2020. Favorable to first exposure.



SOO Line Star Maiden - Dam 916G



SIES 820F-Maternal Sisiter to 916G

J SQUARE S STAR MAIDEN 916G



• Female • 2111732 • SIES 916G • 12/01/2019
 • BW: 80 lbs. • ADJ WW: 742 lbs. • ADJ YW: 1076 lbs.

EPDS	CE	BW	WW	YW	Milk
	10.0	-0.2	61	100	21

CONNEALY BLACK GRANITE
 FF BLACK GOLD JF C19
 JF BARBARAMERE Y3

SOO LINE YELLOWSTONE 6344
 SOO LINE STAR MAIDEN 1067
 SOO LINE STAR MAIDEN 9075

CONNEALY CONSENSUS 7229
 EURA ELGA OF CONANGA 9109
 CONNEALY RIGHT ANSWER 746
 JF BARBARAMERE W32
 CUDLOBE YELLOWSTONE 80M
 ANGUS GLEN FAVORITE 9N
 HF KODIAK 5R
 GEIS STAR MAIDEN 141'07

J SQUARE S FOREVER LADY 928G



• Female • 2111763 • SIES 928G • 17/01/2019
 • BW: 106 lbs. • ADJ WW: 840 lbs. • ADJ YW: 1170 lbs.

EPDS	CE	BW	WW	YW	Milk
	-3.0	4.9	80	141	24

CONNEALY BLACK GRANITE
 FF BLACK GOLD JF C19
 JF BARBARAMERE Y3

SANKEYS JUSTIFIED 101
 J SQUARE S FOREVER LADY 507C
 TRIPLE L J&S FOREVER LADY 301Y

CONNEALY CONSENSUS 7229
 EURA ELGA OF CONANGA 9109
 CONNEALY RIGHT ANSWER 746
 JF BARBARAMERE W32
 SANKEYS LAZER 609 OF 6N
 SANKEYS ERICA 525
 HF TIGER 5T
 GDAR FOREVER LADY 9136



This is a bigger framed female that hails from the Forever Lady cow family. She was the heaviest heifer that crossed the scale last fall but yet doesn't give up any eye appeal. Last spring our two most sought after bulls were ¾ siblings to this female selling to Nu-Horizon Angus and Glasman Farms. Both of those herd sires seen service here before heading to their new homes and we couldn't be more excited.
AI bred to SITZ Major 707F on April 8, 2020.
Exposed to VNDY TCCO Toonie 801F from April 20 to July 1, 2020. Favorable to AI.



J Square S Forever Lady 507C - Dam of 928G

J SQUARE S DINTER PRIDE 924G

LOT 40

• Female • 2111738 • SIES 924G • 16/01/2019
• BW: 74 lbs. • ADJ WW: 644 lbs. • ADJ YW: 992 lbs.

EPDS	CE	BW	WW	YW	Milk
	12.0	-1.7	52	89	19

CONNEALY BLACK GRANITE
FF BLACK GOLD JF C19
JF BARBARAMERE Y3

HF KODIAK 5R
SOO LINE DINTER PRIDE 1078
SOO LINE DINTER PRIDE 8517

CONNEALY CONSENSUS 7229
EURA ELGA OF CONANGA 9109
CONNEALY RIGHT ANSWER 746
JF BARBARAMERE W32
SANDY BAR ADVANTAGE 43M
WILBAR RUBY 955N
GEIS BLACKMAN 224'05
TLA DINTER PRIDE 10R

Here is another well made Black Gold daughter. Her dam has been an excellent producer for us with progeny selling to Jake Rawluk, Holly Madsen, Christian Brost, Vern Hall and we retained one daughter who is the dam of 956G. She is favorable to the Major service and worth a look.

AI bred to SITZ Major 707F on April 12, 2020. Exposed to VNDY TCCO Toonie 801F from April 29 to July 1, 2020. Favorable to AI or first exposure.



J SQUARE S LASS 929G

LOT 41

• Female • 2111741 • SIES 929G • 18/01/2019
• BW: 89 lbs. • ADJ WW: 656 lbs. • ADJ YW: 965 lbs.

EPDS	CE	BW	WW	YW	Milk
	6.0	0.9	58	99	22

CONNEALY BLACK GRANITE
FF BLACK GOLD JF C19
JF BARBARAMERE Y3

J SQUARE S JAG 309A
JSQUARE S LASS 609D
MERIT LASS 165X

CONNEALY CONSENSUS 7229
EURA ELGA OF CONANGA 9109
CONNEALY RIGHT ANSWER 746
JF BARBARAMERE W32
HF TIGER 5T
MVF LADY ANN 934S
MERIT MATADOR 4190
MERIT LASS 9027

If you look back to last year's sale book you will see how highly I talked about this heifer's dam. The Jag females are doing a great job here and I wish we had more of them. This Black Gold is likely to follow in her mother's footsteps. Last year a maternal sister sold to Kelsey Pletz. I feel there is a lot of potential in this female.

AI bred to SITZ Major 707F on April 20, 2020. Exposed to VNDY TCCO Toonie 801F from April 29 to July 1, 2020. Favorable to AI.



J SQUARE S BLACKCAP 987G

LOT 42

• Female • 2111729 • SIES 987G • 05/01/2019
• BW: 72 lbs. • ADJ WW: 658 lbs. • ADJ YW: 978 lbs.

EPDS	CE	BW	WW	YW	Milk
	12.0	-1.8	56	93	20

CONNEALY BLACK GRANITE
FF BLACK GOLD JF C19
JF BARBARAMERE Y3

FF STIMULANT Y40
J SQUARE S BLACKCAP 73B
J SQUARE S BLACKCAP 85Y

CONNEALY CONSENSUS 7229
EURA ELGA OF CONANGA 9109
CONNEALY RIGHT ANSWER 746
JF BARBARAMERE W32
CONNEALY STIMULUS 8419
FF LUCY U25
HF TIGER 5T
J SQUARE S BLACKCAP 13W

This bred female is a going to make a really nice young cow. She is similarly bred to Lot 37 - SIES 986G and the consistency shows. She checked favorable to the Sitz Major exposure which should be a promising mating.

AI bred to SITZ Major 707F on April 20, 2020. Exposed to VNDY TCCO Toonie 801F from April 29 to July 1, 2020. Favorable to AI.





If there was one female in the sale that I would like to keep back, this very well could be her. She traces back to the famous "Rosebud" cow family from our good friends at Crescent Creek Angus. "Rosie" as we call her is moderate in type, deep bodied and extremely quiet. She looks to be setting up a beautiful udder. She is favorable to the Agribition and NWSS Champion, Conley South Point. Take a good look here!!!

AI bred to Conley South Point 8362 on April 6, 2020. Exposed to J Square S Black Gold 900G from May 8 to July 1, 2020. Favorable to AI.

J SQUARE S ROSEBUD 958G

LOT 43

• Female • 2111758 • SIES 958G • 02/03/2019
 • BW: 82 lbs. • ADJ WW: 606 lbs. • ADJ YW: 984 lbs.

EPDS	CE	BW	WW	YW	Milk
	4.0	2.3	52	87	26

- PLEASANT VALLEY LUTE 1207
- HF LUTE 281D
- HF TIBBIE 27A
- FF STIMULANT Y40
- J SQUARE S ROSEBUD 639D
- CRESCENT CREEK ROSEBUD 96U

- PLAINVIEW LUTTON E102
- CHERRY KNOLL ELSA 8014
- HF TIGER 5T
- HF TIBBIE 258W
- CONNEALY STIMULUS 8419
- FF LUCY U25
- MINBURN MAIN EVENT 82R
- CRESCENT CREEK ROSEBUD 42M

J SQUARE S DINTER PRIDE 956G

LOT 44

• Female • 2111756 • SIES 956G • 21/02/2019
 • BW: 78 lbs. • ADJ WW: 678 lbs. • ADJ YW: 938 lbs.

EPDS	CE	BW	WW	YW	Milk
	8.0	1.4	61	104	25

- PLEASANT VALLEY LUTE 1207
- HF LUTE 281D
- HF TIBBIE 27A
- TC FREEDOM 104
- J SQUARE S DINTER PRIDE 605D
- SOO LINE DINTER PRIDE 1078

- PLAINVIEW LUTTON E102
- CHERRY KNOLL ELSA 8014
- HF TIGER 5T
- HF TIBBIE 258W
- CONNEALY FOREFRONT
- T C RUBY 9095
- HF KODIAK 5R
- SOO LINE DINTER PRIDE 8517



A well bred heifer with a really nice look to her. She is from the same cow family as Lot 40- SIES 924G. Again mated to the Black Gold Bull she should bring in a really nice calf next fall.

AI bred to FF Black Gold JF C19 on April 15, 2020. Exposed to VNDY TCCO Toonie 801F from April 29 to July 1, 2020. Favorable to AI.

J SQUARE S KARAMA 943G



• Female • 2111748 • SIES 943G • 04/02/2019
 • BW: 89 lbs. • ADJ WW: 672 lbs. • ADJ YW: 952 lbs.

EPDS	CE	BW	WW	YW	Milk
-1.0	4.3	52	91	24	

PLEASANT VALLEY LUTE 1207
 HF LUTE 281D
 HF TIBBIE 27A

MJ ESCALADE 2W
 J SQUARE S KARAMA 318A
 BROOKMORE KARAMA 204X

PLAINVIEW LUTTON E102
 CHERRY KNOLL ELSA 8014
 HF TIGER 5T
 HF TIBBIE 258W
 REMITALL H RACHIS 21R
 REMITALL ANNIE 543T
 S A V 004 DENSITY 4336
 BROOKMORE KARAMA 40M

943G is a heifer with a little more frame, yet well balanced and bred to the Black Gold bull whom, from you can see, has done a great job. She goes back to the great Karama 204X cow who sold to Iron Saddle Ranch and her daughter to GT Angus, who were both features in our sale last year.

AI bred to FF Black Gold JF C19 on April 15, 2020. Exposed to VNDY TCCO Toonie 801F from April 29 to July 1, 2020. Favorable to AI.



45

J SQUARE S MLG KARAMA 947G



• Female • 2111750 • SIES 947G • 08/02/2019
 • BW: 86 lbs. • ADJ WW: 580 lbs. • ADJ YW: 876 lbs.

EPDS	CE	BW	WW	YW	Milk
2.0	2.3	45	80	21	

PLEASANT VALLEY LUTE 1207
 HF LUTE 281D
 HF TIBBIE 27A

S A V ANGUS VALLEY 1867
 REMITALL F KARAMA 45D
 REMITALL F KARAMA 63B

PLAINVIEW LUTTON E102
 CHERRY KNOLL ELSA 8014
 HF TIGER 5T
 HF TIBBIE 258W
 S A V IRON MOUNTAIN 8066
 S A V MAY 2397
 REMITALL F PROSPECTOR 110Z
 BROOKMORE KARAMA 126S

A female with finer features but loads of potential. Her pedigree is stacked with breed greats like Prospector, Angus Valley and HF Tiger. She is favorable to Black Gold. Chances are there is a good calving ease prospect inside of her.

AI bred to FF Black Gold JF C19 on April 22, 2020. Exposed to VNDY TCCO Toonie 801F from April 29 to July 1, 2020. Favorable to AI.



46

J SQUARE S MAXINE 949G



• Female • 2111751 • SIES 949G • 11/02/2019
 • BW: 78 lbs. • ADJ WW: 586 lbs. • ADJ YW: 850 lbs.

EPDS	CE	BW	WW	YW	Milk
5.0	1.5	42	73	18	

PLEASANT VALLEY LUTE 1207
 HF LUTE 281D
 HF TIBBIE 27A

NORTHERN VIEW NETWORK 124A
 NORTHERN VIEW MAXINE 9C
 NORTHERN VIEW MAXINE 20T

PLAINVIEW LUTTON E102
 CHERRY KNOLL ELSA 8014
 HF TIGER 5T
 HF TIBBIE 258W
 NORTHERN VIEW NET WORTH 104Y
 NORTHERN VIEW PRIDE 8Y
 DOUBLE D SMOKIE 21R
 NORTHERN VIEW MAXINE 18P

A nice made heifer who is moderate in stature out of a really easy doing cow from Northern View. Check out her early service to Black Gold, likely a promising ticket inside of her.

AI bred to FF Black Gold JF C19 on April 22, 2020. Exposed to VNDY TCCO Toonie 801F from April 29 to July 1, 2020. Favorable to AI.



47



48

J SQUARE S **TIBBIE** 902G



• Female • 2111750 • SIES 902G • 02/01/2019
 • BW: 78 lbs. • ADJ WW: 642 lbs. • ADJ YW: 978 lbs.

EPDS	CE	BW	WW	YW	Milk
	10.0	0.6	47	89	23

MUSGRAVE BIG SKY
 MUSGRAVE SKY HIGH 1535
 FLAG QUEEN W 00649

SITZ UPWARD 307R
 J SQUARE S **TIBBIE** 22Y
 MVF **TIBBIE** 616S

CONNEALY EARNAN 076E
 SAV PRIMROSE 7861
 S A V 004 DENSITY 4336
 PLATTEMERE QUEEN W 660
 CONNEALY ONWARD
 SITZ HENRIETTA PRIDE 81M
 NICHOLS EXTRA H6
 MVHF **TIBBIE** 39B

This is a good Sky High daughter with a little extra frame from the famous Tibbie cow family. Her dam has raised many high sellers in previous years. Maternal brothers have sold to Trevor Smith, David Shiels and Scott Ermel.

AI bred to FF Black Gold JF C19 on April 20, 2020. Exposed to VNDY TCCO Toonie 801F from April 29 to July 1, 2020. Favorable to first exposure.



49

J SQUARE S **BLACKCAP** 990G



• Female • Unregistered • SIES 990G • 20/01/2019
 • BW: 84 lbs. • ADJ WW: 726 lbs. • ADJ YW: 1006 lbs.

EPDS	CE	BW	WW	YW	Milk

SRS RIGHT-ON 22R
 SVS KING PIN YU09
 SVS SNICKERDOODLE US09

J SQUARE S JAG 309A
 J SQUARE S **BLACKCAP** 90D
 J SQUARE S **BLACKCAP** 94Z

SRS J914 PREFERRED BEEF
 SRS G720 GILLIAN
 SVS KEEP DREAMIN RNB1
 SVS SANDY S019
 HF TIGER 5T
 MVF LANDY ANN 934S
 SIMMENTAL BULL
 J SQUARE S **BLACKCAP** 83X

Every year we always seem to have one calf that is very identifiable and a little bit different than the rest. In saying that this is a really well put together Sim/Angus bred heifer. Last year a maternal sister sold to Darren Piller and the year before a maternal brother sold to Jared Wirth. Mated to our calving ease bull for a February calf.

Exposed to VNDY TCCO Toonie 801F from April 8 to July 1, 2020. Observed bred April 9, 2020. Preg check favors a mid February calf.



RS

FF **BLACK GOLD** JF C19



• Male • 1998937 • IMP 19C • 15/01/2015

EPDS	CE	BW	WW	YW	Milk
	11.0	-0.7	73	121	17

CONNEALY CONSENSUS 7229
 CONNEALY **BLACK GRANITE**
 EURA ELGA OF CONANGA 9109

CONNEALY RIGHT ANSWER 746
 JF **BARBARAMERE** Y3
 JF **BARBARAMERE** W32

CONNEALY CONSENSUS
 BLUE LILLY OF CONANGA
 S A V BISMARCK 5682
 EURA CAL OF CONANGA 56B
 S A V FINAL ANSWER 0035
 HAPPY DELL OF CONANGA 262
 S A V 8180 TRAVELER 004
 SHAMROCKS **BARBARAMERE** 9254



50

J SQUARE S FOREVER LADY 919G

LOT 50

• Female • 2111733 • SIES 902G • 02/01/2019
 • BW: 60 lbs. • ADJ WW: 652 lbs. • ADJ YW: 988 lbs.

EPDS	CE	BW	WW	YW	Milk
5.5	2.2	50	95	22	

MUSGRAVE BIG SKY
 MUSGRAVE SKY HIGH 1535
 FLAG QUEEN W 00649

HLC 1220 SLOW RIDE 266A
 J SQUARE S FOREVER LADY 634D
 TRIPLE L J&S FOREVER LADY 301Y

CONNEALY EARNAN 076E
 SAV PRIMROSE 7861
 S A V 004 DENSITY 4336
 PLATTEMERE QUEEN W 660
 JL WARDEN 1220
 HLC MISS MARION 5X
 HF TIGER 5T
 GDAR FOREVER LADY 9136

This is a very attractive bred heifer that traces back to our 301Y cow. The Forever Lady cow family has been exceptional for us and I feel this heifer will be no different. This heifer is always one of the first found in the group and she demands your attention. She has great bone mass, depth of body and extension through her front end. She is favorable to the Black Gold 900G bull who is owned by Glasman Farms, MB. An up and coming herd bull who seen lots of exposure this summer.

AI bred to FF Black Gold JF C19 on April 8, 2020. Exposed to J Square S Black Gold 900G from May 1 to June 10, 2020. Then exposed to VNDY TCCO Toonie 801F from June 10 to July 1, 2020. Favorable for mid-February calf by J Square S Black Gold 900G.

J SQUARE S BLACK GOLD 900G

LOT RS

• Male • 2111761 • SIES 900G • 01/01/2019

EPDS	CE	BW	WW	YW	Milk
6.0	1.2	60	101	17	

CONNEALY BLACK GRANITE
 FF BLACK GOLD JF C19
 JF BARBARAMERE Y3

SANKEYS JUSTIFIED 101
 J SQUARE S ENCHANTRESS 518C
 BROOKMORE ENCHANTRESS 229S

CONNEALY CONSENSUS 7229
 EURA ELGA OF CONANGA 9109
 CONNEALY RIGHT ANSWER 746
 JF BARBARAMERE W32
 SANKEYS LAZER 609 OF 6N
 SANKEYS ERICA 525
 S A V 004 DENSITY 4336
 BROOKMORE ENCHANTRESS 17N



RS

Owned With Glasman Farms, Russell, MB



Located in the Qu'Appelle Valley 15 miles south of Lemberg. The herd was started in 1994 and expanded to its current size in 2001, to 380 head of mother cows. To improve on the genetics of our herd we chose to invest in top quality bulls focusing on soundness and maternal traits – like the bloodlines from the HLC breeding program and other top Angus and Hereford breeders in Western Canada. We have chosen to move the herd to a 45-day breeding cycle to ensure our cattle are hearty, fertile and have the punch needed for fall market ready calves.

After 20 years of buying top genetics and culling hard for maternal traits, soundness and fertility, we are presenting the resulting herd genetics. These are the first bred heifers offered for sale off the ranch from the heart of our herd.

We are offering 20 Angus and Angus/Hereford cross bred heifers, bred back to HLC bulls. The heifers are bred for 45 days with calving to start April 10. Our cattle are on a full herd health program and vaccinated spring and fall as calves with Bovi-Shield GOLD One Shot, Ultrabac 7/Somubac and Ivomec and were given Vira Shield 6 and Ivomec this fall. All heifers have been pregnancy tested in calf, by ultrasound. Please feel free to contact Trevor with any questions or stop by to view the heifers.

Consigned By Cam and Sandy Taylor, Trevor and Tawnya Campbell.

Cam: 306-698-2903 | Trevor: 306-698-7891

Service Sires of Commercial Heifers

HLC BUSINESS ELITE 129E



• Male • 1969840 • CHD 129E • 02/03/2017
 • BW: 84 lbs. • ADJ WW: 970 lbs. • ADJ YW: 1372 lbs.

EPDS	CE	BW	WW	YW	Milk
	2.0	2.8	61	95	19

DAMERON FIRST CLASS
 GCC BUSINESS ELITE
 J&J QUEEN 414

EXAR LUTTON 0409B
 HLC 0409 RUBY 703C
 SABA 406S RUBY 50Y

EXG RS FIRST RATE S903 R3
 DAMERON NORTHERN MISS 3114
 NORTHERN IMPROVEMENT 4480
 J&J QUEENIE 9206
 EXAR LUTTON 1831
 W C C FRONTIER GAL 39
 JUSTAMERE 253 BADA BING 406S
 S.A.B.A. RUBY 15U



CHD 129E



CHD 387F



CHD 548G

HLC UNANIMOUS 387F



• Male • 2040029 • CHD 387F • 11/02/2018
 • BW: 88 lbs. • ADJ WW: 755 lbs. • ADJ YW: 1288 lbs.

EPDS	CE	BW	WW	YW	Milk
	1.0	4.4	58	106	19

VISION UNANIMOUS 1418
 BROOKING UNANIMOUS 6102
 LADY OF PEAK DOT 476S

EXAR UPSHOT 0562B
 JUSTAMERE DCH 0562 PRIDE 632B
 EXAR PRIDE 0002

VISIONTOPLINE ROYAL STOCKMAN
 VISION EDELLA 665
 HF POWER-UP 72N
 LADY OF PEAK DOT 566N
 SITZ UPWARD 307R
 EXAR BARBARA T020
 RITO 6EM3 OF 4L1 EMBLAZON
 EXAR PRIDE 382

HLC UNANIMOUS 548G



• Male • 2091833 • CHD 548G • 05/02/2019
 • BW: 83 lbs. • ADJ WW: 869 lbs. • ADJ YW: 1367 lbs.

EPDS	CE	BW	WW	YW	Milk
	3.0	3.3	67	115	19

VISION UNANIMOUS 1418
 BROOKING UNANIMOUS 6102
 LADY OF PEAK DOT 476S

EXAR UPSHOT 0562B
 JUSTAMERE DCH 0562 PRIDE 632B
 EXAR PRIDE 0002

VISIONTOPLINE ROYAL STOCKMAN
 VISION EDELLA 665
 HF POWER-UP 72N
 LADY OF PEAK DOT 566N
 SITZ UPWARD 307R
 EXAR BARBARA T020
 RITO 6EM3 OF 4L1 EMBLAZON
 EXAR PRIDE 382

TERM & CONDITIONS

TERMS:

The terms of the sale are cash or cheque, payable at par at the sale location. The right of property shall not pass until after settlement has been made; no invoicing on buyers in attendance unless previous arrangements have been made. Every animal sells to the highest bidder and in cases of disputes, the auctioneer's decision will be final. Announcements from the auction block will take precedence over the printed matter in the catalogue. Current exchange rates will be announced sale day. All monies are in Canadian funds.

CERTIFICATE OF REGISTRATION:

Each animal will carry papers issued by the Canadian Angus Association unless otherwise stated. A certificate of registry duly transferred will be furnished to the buyer for each animal after payment has been made.

PEDIGREE ESTIMATES

Pedigree Estimates (PE) are created on the projected mating of the animal's sire and dam based on averages of the two, creating estimated values that do not hold the same accuracy of actual EPDs issued from the association and should be used as such.

HEALTH:

All animals in the sale have met all necessary health requirements.

GUARANTEE:

Each animal becomes the purchaser's risk immediately after the animal is sold. All animals in this sale will be sold under the terms and guarantees set forth by the Canadian Angus Association with regard to health, freedom from defects and from both reproductive and specific genetic unsoundness.

PREGNANCY INFORMATION:

All serviceable age females have been pregnancy examined by an accredited veterinarian, giving an estimated length of gestation. This estimated gestation period shall be used only as a guideline to calving and is not a guarantee of actual service.

LIABILITIES:

All persons attend the sale at their own risk. The seller, facility owner and sale manager assume no liability legal or otherwise, for any accidents that occur. It is understood that T Bar C Cattle Co. (2013) Ltd. is acting only as a medium between buyer and seller and is not responsible for any failure on the part of either party to live up to his obligations. Neither does T Bar C Cattle Co. (2013) Ltd. assume any financial obligations to collect or enforce collection of any monies between parties and any legal action that may in exceptional cases be taken must be between the buyer and the seller. T Bar C Cattle Co. (2013) Ltd. assumes no responsibility for any credit extended by the seller to the buyer. The buyer must look to the seller for fulfillment of all guarantees and representations made hereunder.

DELIVERY:

Every assistance will be given in getting your purchases home. Each animal becomes the risk of the purchaser as soon as sold.

PHONE, MAIL, WIRE BIDS:

Bidders unable to attend the sale may phone, wire or mail their bids and instructions to the sale manager, auctioneer or special representatives. Bids must be received in sufficient time prior to the sale.

INSURANCE:

We strongly recommend that insurance is purchased for full value.

ERRORS:

All announcements at sale time, written or oral, supersede any written material in the catalogue.

Return Undeliverable
Canadian Addresses To:
T Bar C Cattle Co. Ltd.
Box 2330
Warman, SK S0K 4S0



Created by:

