



SIX MILE RANCH

43RD ANNUAL BULL SALE

SATURDAY, APRIL 14, 2018
At the Ranch, Fir Mountain, SK

Welcome TO SIX MILE AND OUR 43RD ANNUAL BULL SALE

Welcome to our 43rd Annual Bull Sale.

2017 was a hell of a year! The highlight was definitely watching our daughter Callie marry Tyson Hertz right here on the ranch. Tyson is an astute, hard working young cattlemen with a passion for the industry. He brings so many strengths to the table, not only as a cattleman but as a part of our family. The next big change was when Callie quit her full time teaching job to work here on the ranch. Together, Tyson and Callie are taking on more responsibility and they are a joy to watch. Six Mile is in great hands with these two around. Not that we (Clayton and Corinne) are going anywhere, but we sure enjoy their enthusiasm, new ideas, and work ethic. Cade and Coy help out when they can and are a definite asset and comic relief around here. Watching our family grow and work together is a dream come true for us.

Then came September 4th, when a devastating prairie fire rages through 5 sections of our grazing pasture. This coupled with the severe drought, has been the most challenging thing we have faced here at Six Mile. The positive is that we were forced to cull our herd deeper than ever, making it stronger as we look to the future.

Time has simply flown since then and here we are at bull sale time already. Thank you for considering a Six Mile bull as your next herd sire. We know you have a lot of choices and we guarantee we will work hard to make you a repeat, satisfied customer.

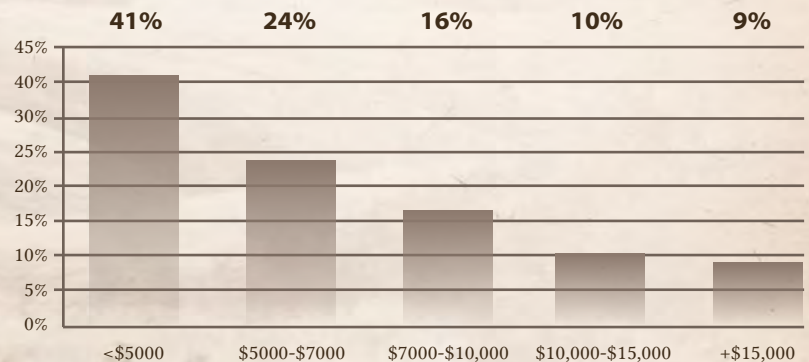
We endeavour to raise our bulls in a real world environment and select for economic and genetic traits that will improve your bottom line. We strive to provide experience, customer service, breed leading genetics and support to our customers. We spend countless hours sourcing new genetics that will improve our herd and in turn our customers' herds. If you have any questions or comments - please do not hesitate to contact us. We hope to see you sale day if not sooner.

With Kind Regard,
Clayton and Corinne



Clayton, Corinne, Cade and Coy Gibson, Tyson and Callie Hertz
Box 8, Fir Mountain, Sask. S0H 1P0
Tel: 306-266-4895 | Cell: 306-642-8013 | Email: sixmile@sasktel.net
www.sixmileredangus.com

SIX MILE BULLS ARE AFFORDABLE Average Bull Prices Last 4 Bull Sales



OUR ranch TEAM



Sebastien Stewart
MARKETING
250-423-1357



Tyson Hertz
PUREBRED OPERATIONS
403-376-7284



Walter & Rosie Wall
RANCH FOREMAN
306-266-4230



Rae Tutor
OFFICE MANAGER
306-266-4895

SALE DAY PHONE

Sale Barn	306-266-2186
Clayton	306-642-8013
Corinne	306-640-7970
Callie	306-640-9275
Sebastien Stewart	250-423-1357
Tyson Hertz	403-376-7284

DIRECTIONS From Highway #18, at the Fir Mountain turnoff travel 1 mile east, then 2 miles south. Watch for the Six Mile bull sign on Highway #18. Turn off the highway onto gravel road at Range Road 3050.

SCHEDULE OF EVENTS

FRIDAY, APRIL 13

Bulls Available for viewing all day
5:30 BBQ Hamburgers – Everyone Welcome

SATURDAY, APRIL 14

11:30 Beef Dinner
2:00 pm 43rd Annual Bull Sale
Food & Refreshments Served All Day
4:30 After Sale Party and Hospitality

ACCOMODATIONS

Please contact Corinne at 306-266-4895 if you would like assistance with accommodations.

Canalta Hotel, Assiniboia, 306-642-1010
(40 minutes northeast)

121 Steakhouse/Lounge & Motel, 306-642-4662
(40 minutes northeast)

Cottonwood Inn, Glasgow, MT, 406-228-8213
(60 minutes south)

Gravelbourg Inn, Gravelbourg, 306-648-3182
(40 minutes north)

Grasslands Inn, Mankota, 306-478-2909
(30 minutes west)

PAYMENT TERMS The terms of the sale are cash or check payable at par at the completion of the sale. If you purchased an animal as an absentee bidder, please make arrangements to mail a cheque or wire money within 48 hours of the sale.

Please contact Clayton or Corinne Gibson prior to the sale, if you require special payment or financing terms.

U.S EXCHANGE / TRAVEL 🇺🇸 U.S. funds will be accepted at the current rate of exchange sale day and will be posted prior to the sale. **The U.S. dollar is currently at a big premium in Canada giving our U.S. customers added buying power and value.** The closest border crossing (Montana into Saskatchewan) is the Port of Opheim and is located about 25 miles south of the ranch. The ranch is just over an hour northwest of Glasgow, MT. The closest airport to the ranch is the Regina, Saskatchewan International Airport, about 2.5 hours from the ranch.

ONLINE BIDDING

Those unable to attend the sale will be able to watch and bid online contact Sarah Buchanan, 306-681-5340 www.dvauction.com

SALE STAFF

Auctioneer	Brent Carey	403-650-9028
Ring Staff	Mark Stock	403-357-8104
	Donnie Peacock	306-662-8288
	Nathan Marin	306-869-7130

SALES CONSULTANTS

Heartland Livestock – Swift Current

Lee Crowley	306-741-5701
Donnie Peacock	306-662-8288

Bohrson Marketing

Scott Bohrson	403-370-3010
Matt Criddle	306-539-6934
Geoff Anderson	306-731-7921

T Bar C Cattle Co

Shane Michelson	403-363-9973
-----------------	--------------

U.S. Contact - Harmony Hill

Garrett Knebel	219-508-2657
----------------	--------------

Videographer

Golden Thread Livestock Images	306-681-5340
--------------------------------	--------------

Insurance

Stockmen's Insurance, Larry Toner	306-931-0088
-----------------------------------	--------------

SIGHT UNSEEN PURCHASES If you are interested in any of the lots, but unable to attend the sale, please contact Clayton or Corinne Gibson in advance of the sale, preferably 48 hours prior to sale day. This will allow us time to discuss your needs and suggest bulls that fit your criteria. Videos have been produced of the sale bulls allowing you to view the offering before the sale. Once we compile a list of bulls for you we will endeavour to buy one on your behalf from the sale. Your order will be held in the strictest confidence and handled with integrity and professionalism. This has become a convenient option for many satisfied customers in the past. Your **SATISFACTION** is 100% guaranteed when you have discussed your order with Clayton or Corinne prior to the sale.

VOLUME DISCOUNTS We are able to fill your needs whether you need one or a trailer load of bulls this year. We are pleased to offer the following discounts to those needing multiple bulls:

- 3 – 4 bulls 3% discount
- 5- 9 bulls 5% discount
- 10 or more bulls 10% discount

This discount will only apply to bulls that are paid for in full on sale day. Absentee buyers will have a 14 day extension for their discounts. Partnership bulls will not apply.

Videos Available At www.dvauction.com

DVAuction
Broadcasting Real-Time Auctions

SIX MILE RANCH

As Always, Six Mile Ranch guarantees to sell you a bull that is structurally sound and has passed a semen test done by a licensed veterinarian.

Should any Six Mile bull fail to be a satisfactory breeder and unable to physically service a female, he will be replaced with a bull of equal or greater value. If this is not possible, an adjustment will be made to reflect the value of the bull in question - or a credit will be given towards the purchase of another bull. Things do go wrong sometimes and we will be there to back up our sale guaranteed. So you can rest assured that we will provide you with a sound breeding bull and we will be there to assist you if problems arise.

We, however, will not provide replacement or adjustment for physical injury, sickness, mismanagement, damaged testicles or deterioration of semen quality after a successful test. Bearing this in mind - we stress the importance of Third Party Insurance (Stockmen's Insurance - Larry Toner) or NEW THIS YEAR.....

BREEDING SEASON WARRANTY PROGRAM

Our warranty program is new this year and developed to help you protect your investment at a reasonable rate. Under our warranty program your bull is covered for injury, sickness, accident, disease fertility, structural breakdown or death. Should such a problem arise - We will service your needs with another bull or a credit will be given to next year's sale. With calving 700 Purebred cows - it allows us to keep bulls of high quality out of the sale and ready for this reason. We offer the following options that are required to be paid the day of the sale. Callie Hertz will be available to discuss the program with you.

OPTIONS:

1. Duration: 2 MONTHS..... 3 % - we strongly suggest this coverage for bull that will not be going home the day of the sale.
2. Duration: 6 MONTHS..... 6%
3. Duration: 12 MONTHS..... 10%
4. Duration : 12 MONTHS..... 12 % with Comprehensive Infertility which includes failing subsequent semen tests and will not recover, frozen testicles and testicular degeneration.

If you should have any problems with a bull you must immediately contact Six Mile Ranch directly at sixmile@sasktel.net or 306-266-4895 or Callie Hertz at 306-640-9275. We will require that your veterinarian complete a report and fax or email it to Six Mile Ranch. If the animal dies, a post mortem report will be required. Six Mile has the right to request another veterinarian complete a second report at their discretion and cost.

EXCLUSION TO WARRANTY:

Six Mile will not warranty any injury or death due to malicious, willful or intentional acts or mistreatment.

FIRE SALE

Due to the fact that we are short of grass this year, we currently have a solid group of 20 - 40 purebred Red and Black Angus heifers for sale privately!

Contact us for more details.



SIX MILE BULL MANAGEMENT

We did things A Bit Different this year!

Six Mile bulls are raised and fed responsibly with one goal – to sell only the best performing, naturally superior, structurally sound, maternally backed product we can.

CALF DEVELOPMENT: This year all of our bulls were given the exact same opportunity to perform. We made the decision not to show ANY bulls and therefore, no bulls were separated and given special attention prior to weaning. We must admit we love showing our bulls and it was difficult to not be able to (So difficult in fact - that we did take one to Denver in January - even though he was not fully ready to be there!). However, we felt it was imperative to ensure accurate culling and evaluation. EVERY bull came to their weaning weight honestly on mother's milk and prairie grass, as sparse as it was this year (with the exception of one who was shown at the side of his dam)! We do not separate our bulls into small management groups – they must compete against many other contemporaries to perform. We did not creep feed any of the bulls, however about two weeks prior to weaning we did put out a couple creep feeders to allow them to adjust to some grain. This minimal amount made no difference to their performance but did make transition at weaning a bit easier. We weaned and weighed the bulls at the end of September.

CULLING: We cull at every stage of development. We cull at birth if there ever happens to be a Hard Assist and if there is some structural problem. We cull again prior to weaning – on performance, structure, temperament and with consideration of what the dam looks like at the time of weaning. We cull again after three months on feed (beginning of January) again with all economically important traits in mind. Then we do a final cull prior to making the bull sale catalog. We do keep a pen of solid, top end bulls in a private treaty pen to service our bull customer's. However, anything with any problem we deem economically significant, has been culled. We calve 700 purebred cows and sell only 150 – 175 bulls a year – they are the top end of our calf crop. Note: You may notice that there are no heavier birth weight bulls (100 +) in the sale this year. This is not because we do not have them. It is because we have culled them and cut them into steers. This is in accordance with our bull customer's preferences. The only bulls that we leave intact with 100 + birth weights are ones that have way above average performance and were born completely unassisted. We actually keep some of the larger birth weight bulls and use them in our own commercial herd because they are what we prefer to use - but are not in high demand when offered for sale.

FEEDING: The bulls are fed a dry matter ration of tub ground hay and grain bales mixed with a Total Mixed Grain Ration developed with Master Feeds. The bulls have access to free choice grass hay at all times. They have access to a free choice mineral and salt at all times. These bulls are not fat by any means, but do have enough condition to reach their potential and carry enough weight to go into breeding season ready to work.

HEALTH: All Six Mile bulls have been vaccinated with Vista Once SQ and Vision 8 Somnus which includes IBR, PI-3, BVD – type 1 and 2 and BRSV. They have also been vaccinated with a somnugen and black leg vaccine. Each bull has been treated with Ivomec three times prior to sale. They have also received Safeguard at weaning. All bulls have been examined for breeding soundness by Dr. Kelly Lightfoot and Dr. Mashall McDonald of the Assiniboia Vet Clinic.



CALVING EASE GUIDE

Every year the most frequent question we receive is which bull will work on heifers. Well.....only you know your heifers and must consider breed composition and hybrid vigor - but we try our very best to evaluate each bull to assist you. We developed the following guideline for calving ease by evaluating many traits in making our recommendations:

- actual birth weight
- birth weight EPD
- Calving Ease and Maternal Calving Ease
- Dam's past birth weight and calving records on progeny
- Sire's birth weight and calving tendencies
- Bulls physical attributes.

This Calving Ease Guide is our most accurate prediction based on the above mentioned criteria.

Calving Ease 1 Cow Bull - Recommended for mature females only. Not recommended for heifers.

Calving Ease 2 Recommended for use on larger, well grown heifers only, expect to assist some normal births from first calf heifers.

Calving Ease 3 Recommended for heifers, easy calving with minimal assistance on normal births

Calving Ease 4 Highly recommended for heifers, expect little to no assistance on normal births

Reckoning

SONS



Reckoning continues to work wonders in our herd and has become one of the most sought after sires in the Red Angus industry. His sons have caused a major stir in the past few years and his daughters are now producing at the highest level. He stamps his offspring with extra shape and dimension, an exceptional foot design and a dark red color. Reckoning is sure to have a lasting impact on the Six Mile herd and the Red Angus breed. Unfortunately he was injured and is not able to produce semen or walk naturally – so these sons are in high demand.



Reckoning Daughter



Reckoning Daughter



Reckoning Daughter



Reckoning Son



Lot 1 pictured

1

RED SIX MILE JOHN WICK 882E

SIXM 882E • 1994984 • February 19, 2017

RED U-2 RECON 192Y DMF AMF CAF NHF OSF MAF DDF
RED U-2 RECKONING 149A AMF CAF NHF OSF MAF DDF
 RED U-2 ANEXA 271Y

RED 6 MILE FULL THROTTLE 171T OSF
RED SIX MILE & CO GLORIA 29A
 RED SIX MILE GLORIA 746W OSF MAF

RED BRYLOR WEST JET 69W
 RED U-2 LARKABA 8133U OSF
 RED HOWE MAGNUM 169W
 RED U-2 ANEXA 333N
 RED TER-RON FULLY LOADED 540R AMF OSF
 RED SIX MILE WITZEL 360J OSF
 RED 5L NORSEMAN KING 2291 OSF MAF
 RED SIX MILE GLORIA 361T OSF MAF

We feel there are few Red Angus bulls on offer this spring that offer the skeletal integrity & structural soundness that John Wick possesses. He combines athleticism and comfort in motion with a “look at me now” stature in the pen. 882E comes from one of our foundation cow families “Gloria”, who are responsible for producing highly sought after progeny in all facets of the Red Angus industry. John Wick’s mother 29A is a deep bodied, sound structured, low-input cow who we feel is just hitting her prime. She was born into our summer program and proved her fertility by moving up to our winter calving group in just 3 years. Owned with Sunberry Valley Farms.

Selling 50% Possession 50% Semen Interest please contact us for more details.

- **Calving Ease 4**

BW	WW	Index	YW	Index	EP DS	BW	WW	YW	Milk	TM	REA	Marb
78	694	106	1382	130	-1.5	54	103	22	50	-0.1	0.31	



Granddam of Lot 1
Red Six Mile Gloria 746W



Lot 1 at NWSS 2018



Dam of Lot 1
Red Six Mile & Co Gloria 29A



Lot 2 pictured

2

RED SIX MILE EMPIRE STATE 184E

SIXM 184E · 1995148 · March 11, 2017

RED U-2 RECON 192Y DMF AMF CAF NHF OSF MAF DDF
RED U-2 RECKONING 149A AMF CAF NHF OSF MAF DDF
 RED U-2 ANEXA 271Y

PEAK DOT ELIMINATOR 100Z
RED SIX MILE DEBBIE DEE 377C
 RED SIX MILE DEBBIE 31W

RED BRYLOR WEST JET 69W
 RED U-2 LARKABA 8133U OSF
 RED HOWE MAGNUM 169W
 RED U-2 ANEXA 333N

S A V ELIMINATOR 9105 AMF CAF NHF OSF
 ERICA OF PEAK DOT 730T
 RED LAZY MC SMASH 41N OSF
 RED GOLD-BAR DEBBIE KN 112M

- large outlined, high performing, Top 1% in WW, YW, Milk, TM, CW
- 377C is a large framed, dark red, heavy milking female with a nice udder structure. A full sister to 377C was Jr Division Calf Champion at CWA 2017 and now resides at Harmony Hill in Montana.
- *Retaining 1/3 Semen Interest*
- *Calving Ease 1*

BW	WW	Index	YW	Index	EPDs	BW	WW	YW	Milk	TM	REA	Marb
87	834	129	1427	119	1.6	71	124	30	63	-0.07	1.30	



Full sister to dam of Lot 2



Maternal Grand sire of Lot 2



Lot 3 pictured

3

RED SIX MILE RECTIFY 861E

SIXM 861E · 1994981 · February 16, 2017

RED U-2 RECON 192Y DMF AMF CAF NHF OSF MAF DDF
RED U-2 RECKONING 149A AMF CAF NHF OSF MAF DDF
 RED U-2 ANEXA 271Y

RED BRYLOR WEST JET 69W
 RED U-2 LARKABA 8133U OSF
 RED HOWE MAGNUM 169W
 RED U-2 ANEXA 333N

RED BENCHMARK BETTER BEEF NHF OSC MAF
RED SIX MILE BRIDGET 584A OSF
 RED SIX MILE BRIDGET 330X

RED BASIN EXT 45T5 AMF NHF OSF MAF
 RED FAYETTE OF BENCHMARK 424 OSC
 RED SIX MILE AVIATOR 217P OSF
 RED GRAHAM BRIDGET 529R

- three dimensional, meat wagon, Calving Ease potential with added grow
- 584A is a hard working Better Beef daughter. Attractive front end, dark red with adequate rib.
- **Calving Ease 3**

BW	WW	Index	YW	Index	EP DS	BW	WW	YW	Milk	TM	REA	Marb
82	688	104	1269	116	-0.3	55	90	21	49	0	0.38	



Maternal sister to dam of Lot 3



Maternal Grandsire of Lot 3



Lot 4



3/4 Brother to Lot 4

Lot 4

- sale feature, striking profile, extremely athletic
- 396Y is a youthful, refined, hardworking female who earned "Elite Dam" status this year. She has a son working at Sayers Farms and 2 females retained in our herd.
- *Calving Ease 4*
- *Dam's Average Wean Index 104 (5 calves)*

4 RED SIX MILE EL SALVADOR 327E

SIXM 327E · 1994803 · March 23, 2017

RED U-2 RECON 192Y DMF AMF CAF NHF OSF MAF DDF
RED U-2 RECKONING 149A AMF CAF NHF OSF MAF DDF
 RED U-2 ANEXA 271Y

PEAK DOT PREDOMINANT 135S
RED SIX MILE MS PATHY 396Y
 STEWART MISS PATHY 350N

RED BRYLOR WEST JET 69W
 RED U-2 LARKABA 8133U OSF
 RED HOWE MAGNUM 169W
 RED U-2 ANEXA 333N

S A V 004 PREDOMINANT 4438 AMF CAF OHF NHF DDF
 LADY OF PEAK DOT 610K
 STEWART NORTHERN PROMPTER 58L
 RED JEWEL MISS PATHY 62A

BW	WW	Index	YW	Index	EPDs	BW	WW	YW	Milk	TM	REA	Marb
81	642	96	1293	130	-1.5	45	87	27	49	-0.03	0.32	

5 RED SIX MILE RECKONING 178E

SIXM 178E · 1995146 · March 10, 2017

RED U-2 RECON 192Y DMF AMF CAF NHF OSF MAF DDF
RED U-2 RECKONING 149A AMF CAF NHF OSF MAF DDF
 RED U-2 ANEXA 271Y

PEAK DOT ELIMINATOR 100Z
RED SIX MILE DIXIE 546C
 RED SUNBERRY INDEED 20Y

RED BRYLOR WEST JET 69W
 RED U-2 LARKABA 8133U OSF
 RED HOWE MAGNUM 169W
 RED U-2 ANEXA 333N

S A V ELIMINATOR 9105 AMF CAF NHF OSF
 ERICA OF PEAK DOT 730T
 RED SIX MILE FULL TILT 869W
 RED VIKSE DA DIXIE 49U

BW	WW	Index	YW	Index	EPDs	BW	WW	YW	Milk	TM	REA	Marb
90	710	107	1320	122	1.2	64	115	25	56	-0.01	0.38	



Lot 5



Dam of Lot 5

Lot 5

- sale feature, exceptional quality, explosive growth, herd sire look
- 546C is an outstanding individual. Easy fleshing, tidy udder, flexible and sound structured
- *Calving Ease 1*

6

RED SIX MILE RECKONING 117E

TWIN · SIXM 117E · 1994993 · March 06, 2017

RED U-2 RECON 192Y DMF AMF CAF NHF OSF MAF DDF
RED U-2 RECKONING 149A AMF CAF NHF OSF MAF DDF
 RED U-2 ANEXA 271Y

RED FLYING K MAX 159Y
RED SSS MABEL 711A
 RED SSS MABEL 141U

RED BRYLOR WEST JET 69W
 RED U-2 LARKABA 8133U OSF
 RED HOWE MAGNUM 169W
 RED U-2 ANEXA 333N

RED ML MAX 862U
 RED FLYING K ANITA 764T
 RED SSS STOKED 346S
 RED SSS MABEL 6R

BW	WW	Index	YW	Index	EPDs	BW	WW	YW	Milk	TM	REA	Marb
56	616	100	1148	100		-1.1	46	69	22	45	-0.11	0.38

- big topped, smooth made, balanced and stout
- 711A is a deep sided, angular made young female who is just hitting her prime. She has a gorgeous daughter retained in our herd.
- *Calving Ease 4*



Lot 6

7

RED SIX MILE ENCARNACION 866E

TWIN · SIXM 866E · 1994783 · February 16, 2017

RED U-2 RECON 192Y DMF AMF CAF NHF OSF MAF DDF
RED U-2 RECKONING 149A AMF CAF NHF OSF MAF DDF
 RED U-2 ANEXA 271Y

RED SIX MILE TRAVELCITY 318X OSF MAF
RED SIX MILE SEXY SYRINGA 60Z
 RED SIX MILE SEXY SYRINGA 264X

RED BRYLOR WEST JET 69W
 RED U-2 LARKABA 8133U OSF
 RED HOWE MAGNUM 169W
 RED U-2 ANEXA 333N

RED SIX MILE SAKIC 832S OSF MAF
 RED SIX MILE DUCHESS 739S OSF
 RED SIX MILE TIMBERLAKE 180T AMF OSF
 RED SIX MILE SEXY SYRINGA 515U

BW	WW	Index	YW	Index	EPDs	BW	WW	YW	Milk	TM	REA	Marb
68	618	100	1206	100		-0.2	64	97	25	57	-0.13	0.19

- smooth made, dark red, nice muscle shape
- 60Z is a heavy milking, hardworking Travelocity daughter with a son selling to Jeremy Isaac for \$11,750.
- *Calving Ease 3*
- *Dam's Average Wean Index: 109 (4 calves)*



Lot 7

8

RED SIX MILE RECKONING 388E

SIXM 388E · 1994995 · March 28, 2017

RED U-2 RECON 192Y DMF AMF CAF NHF OSF MAF DDF
RED U-2 RECKONING 149A AMF CAF NHF OSF MAF DDF
 RED U-2 ANEXA 271Y

RED BRYLOR REDWOOD 50U AMF NHF OSF MAF
RED SIX MILE MISS DYNAMO 812A
 RED SIX MILE MISS DYNAMO 179Y

RED BRYLOR WEST JET 69W
 RED U-2 LARKABA 8133U OSF
 RED HOWE MAGNUM 169W
 RED U-2 ANEXA 333N

RED BRYLOR SDL REDWOOD 217S OSF MAF
 RED NDCC MISS BONITA 329N
 RED 5L NORSEMAN KING 2291 OSF MAF
 RED SIX MILE MS DYNAMO 833W

BW	WW	Index	YW	Index	EPDs	BW	WW	YW	Milk	TM	REA	Marb
78	675	98	1243	117		-1.6	50	90	26	51	0.09	0.33

- big topped, Calving Ease with maternal worth, heavy muscled
- 812A is a powerfully constructed, nice uddered Redwood daughter that stems back to the high quality and productive "Dynamo" family. She has two daughters retained in our herd.
- *Calving Ease 4*
- *Dam's Average Wean Index 102 (3 calves)*



Lot 8



Lot 9



Maternal Grandsire of Lot 9

Lot 9

- striking profile, blood red color, standout since birth
- 636B is a moderate framed, feminine featured Warcraft daughter with a nice udder. She is a product of our summer calving program and exemplified fertility by quickly finding a home in our winter calving group.
- **Calving Ease 3**
- **Dam's Average Wean Index: 111 (2 calves)**

9 RED SIX MILE EL CAMINO 946E
SIXM 946E • 1995033 • February 24, 2017

RED U-2 RECON 192Y DMF AMF CAF NHF OSF MAF DDF
RED U-2 RECKONING 149A AMF CAF NHF OSF MAF DDF
 RED U-2 ANEXA 271Y

RED SIX MILE WARCRAFT 254Z OSF
RED SIX MILE EMA 636B
 RED DEVOLANE EMA 2N

RED BRYLOR WEST JET 69W
 RED U-2 LARKABA 8133U OSF
 RED HOWE MAGNUM 169W
 RED U-2 ANEXA 333N

RED SIX MILE TRAVELOCITY 318X OSF MAF
 RED SIX MILE PRIDE 902S
 RED YY BULLET 105L
 RED DEVOLANE PAT 29J

BW	WW	Index	YW	Index	EPDs	BW	WW	YW	Milk	TM	REA	Marb
84	748	114	1365	123	-1.9	51	87	22	49	-0.03	0.15	

10 RED SIX MILE RECKON 105E
SIXM 105E • 2003742 • March 06, 2017

RED U-2 RECON 192Y DMF AMF CAF NHF OSF MAF DDF
RED U-2 RECKONING 149A AMF CAF NHF OSF MAF DDF
 RED U-2 ANEXA 271Y

RED SIX MILE RICOCHET 478R
RED SIX MILE GLORIA 361T OSF MAF
 RED SIX MILE GLORIA 182N

RED BRYLOR WEST JET 69W
 RED U-2 LARKABA 8133U OSF
 RED HOWE MAGNUM 169W
 RED U-2 ANEXA 333N

RED DIAMOND D PILGRIM 129L
 RED SIX MILE LIBRA 119N
 RED TER-RON CINCH 910L
 RED BAR-E-L GLORIA 47L

BW	WW	Index	YW	Index	EPDs	BW	WW	YW	Milk	TM	REA	Marb
90	727	108	1251	107	1	57	87	25	53	-0.16	0.27	



Lot 10



Dam of Lot 10

Lot 10

- shapely design, heavy muscled, sound footed
- 361T is the matriarch of the "Gloria" cow family and a stellar donor. Sons working for Lassiter Brothers, Triple X, Doug Brant and Mark Weisbeck.
- **Calving Ease 1**

11

RED SIX MILE EARNHART 19E

SIXM 19E · 1994991 · March 01, 2017

RED U-2 RECON 192Y DMF AMF CAF NHF OSF MAF DDF
RED U-2 RECKONING 149A AMF CAF NHF OSF MAF DDF
 RED U-2 ANEXA 271Y

RED SIX MILE RUGER 221X OSF MAF
RED SIX MILE MISS LARK 855A
 RED SVR MISS LARK 100P OSF MAF

RED BRYLOR WEST JET 69W
 RED U-2 LARKABA 8133U OSF
 RED HOWE MAGNUM 169W
 RED U-2 ANEXA 333N

RED SIX MILE ULTIMATUM 409U OSF
 RED SIX MILE SHAWNEE 116T OSF MAF
 RED SOUTH VIEW NO EQUAL 28H
 LAMBS MISS LARK 36E

BW	WW	Index	YW	Index	EPDs	BW	WW	YW	Milk	TM	REA	Marb
90	764	116	1301	107		1.4	69	105	20	55	0.1	0.18

- large outlined, growth oriented, maternal pedigree
- 855A is a member of the “Lark” cow family who are known for their exceptional quality. Tight and tidy udder structure, stout design with excellent foot size.
- **Calving Ease 1**
- **Dam’s Average Wean Index: 107 (3 calves)**



Lot 11

12

RED SIX MILE RECKONING 982E

SIXM 982E · 2003655 · February 26, 2017

RED U-2 RECON 192Y DMF AMF CAF NHF OSF MAF DDF
RED U-2 RECKONING 149A AMF CAF NHF OSF MAF DDF
 RED U-2 ANEXA 271Y

RED SIX MILE WILD WEST 0913W OSF MAF
RED SIX MILE PRIDE 676C
 RED SIX MILE PRIDE 386Y

RED BRYLOR WEST JET 69W
 RED U-2 LARKABA 8133U OSF
 RED HOWE MAGNUM 169W
 RED U-2 ANEXA 333N

RED SIX MILE MASTERMIND 854M OSF MAF
 RED JCC ELORA 45S OSF
 RED SIX MILE TWISTER 470U
 RED SIX MILE PRIDE 835S

BW	WW	Index	YW	Index	EPDs	BW	WW	YW	Milk	TM	REA	Marb
90	714	108	1254	108		0.1	54	79	25	53	-0.1	0.23

- dark red, excellent hair coat, impressive in motion
- 676C is a moderate designed, deep bodied female with a tightly suspended udder with perfect teat size.
- **Calving Ease 2**



Lot 12

13

RED SIX MILE RED SMOKE 190E

SIXM 190E · 2003752 · March 11, 2017

RED U-2 RECON 192Y DMF AMF CAF NHF OSF MAF DDF
RED U-2 RECKONING 149A AMF CAF NHF OSF MAF DDF
 RED U-2 ANEXA 271Y

RED SIX MILE GAME FACE 164Y AMF NHF OSF MAF
RED SIX MILE GLORIA 195B
 RED SIX MILE GLORIA 361T OSF MAF

RED BRYLOR WEST JET 69W
 RED U-2 LARKABA 8133U OSF
 RED HOWE MAGNUM 169W
 RED U-2 ANEXA 333N

RED VGW GAME PLAN 816 AMF NHF OSF MAF
 RED SIX MILE LAKOTO 35W OSF MAF
 RED SIX MILE RICOCHET 478R
 RED SIX MILE GLORIA 182N

BW	WW	Index	YW	Index	EPDs	BW	WW	YW	Milk	TM	REA	Marb
80	656	97	1138	98		0	54	82	20	47	-0.11	0.27

- long sided, big time maternal pedigree, smooth design
- 195B is a female that needs little introduction. Champion Female at Agribition 2016, 195B is the up-and-coming donor from the “Gloria” cow family. ¾ brother to Lot 1.
- **Calving Ease 4**



Lot 13 and Dam



Lot 14

14 RED SIX MILE RESURGENCE 228E

SIXM 228E · 2003463 · March 14, 2017

RED U-2 RECON 192Y DMF AMF CAF NHF OSF MAF DDF
RED U-2 RECKONING 149A AMF CAF NHF OSF MAF DDF
 RED U-2 ANEXA 271Y

RED BRYLOR WEST JET 69W
 RED U-2 LARKABA 8133U OSF
 RED HOWE MAGNUM 169W
 RED U-2 ANEXA 333N

RED TER-RON REBEL 102N
RED SOO LINE COUNTESS 6125 OSF MAF
 RED SOO COUNTESS 3211

RED LAZY MC DIVIDE 8J
 RED TER-RON MISSMAE 102K
 RED BAR-E-L APPROVAL 4L
 RED GET-A-LONG COUNTESS 960

BW	WW	Index	YW	Index	EP DS	BW	WW	YW	Milk	TM	REA	Marb
93	814	122	1447	125		0.4	55	85	23	51	-0.05	0.22

- larger framed, rugged made, sound footed
- 125S is a designated "Elite Dam" for us and she raised the 2012 Grand Champion Female at NWSS. 125S was our top pick from the Soo Line Dispersal. Dark red, tidy udder and larger framed donor cow.
- *Calving Ease 1*



Dam of Lot 14

15 RED SIX MILE EDISON 141E

SIXM 141E · 1994792 · March 08, 2017

RED U-2 RECON 192Y DMF AMF CAF NHF OSF MAF DDF
RED U-2 RECKONING 149A AMF CAF NHF OSF MAF DDF
 RED U-2 ANEXA 271Y

RED BRYLOR WEST JET 69W
 RED U-2 LARKABA 8133U OSF
 RED HOWE MAGNUM 169W
 RED U-2 ANEXA 333N

RED U-2 BIG LEAGUE 7136T
RED SIX MILE ROSIE 34W
 RED ROSE KKL 506R

RED U-2 BIG LEAGUE 544R
 RED STEWART PINOLA 1L
 RED YY CHIEFLINE 314N ET
 RED CRESCENT CREEK ROSE 65M

BW	WW	Index	YW	Index	EP DS	BW	WW	YW	Milk	TM	REA	Marb
88	769	117	1300	106		-0.2	58	86	23	52	-0.11	0.2

- sound structured, smooth made, herd sire presence
- Rosie 34W is a heavy milking, ultra refined female who consistently produces quality offspring.
- *Calving Ease 2*
- *Dam's Average Wean Index: 102 (7 calves)*

16 RED SIX MILE EL PASO 967E

SIXM 967E · 1994787 · February 26, 2017

RED U-2 RECON 192Y DMF AMF CAF NHF OSF MAF DDF
RED U-2 RECKONING 149A AMF CAF NHF OSF MAF DDF
 RED U-2 ANEXA 271Y

RED BRYLOR WEST JET 69W
 RED U-2 LARKABA 8133U OSF
 RED HOWE MAGNUM 169W
 RED U-2 ANEXA 333N

RED SIX MILE WILD WEST 0913W OSF MAF
RED SIX MILE OLYMPIA 39Z
 RED STEWART OWYHEE 605S

RED SIX MILE MASTERMIND 854M OSF MAF
 RED JCC ELORA 45S OSF
 RED CROWFOOT OLE'S OSCAR 2042M AMF CAF NHF OSF MAF
 RED YY OWYHEE 354N ET

BW	WW	Index	YW	Index	EP DS	BW	WW	YW	Milk	TM	REA	Marb
86	681	102	1290	120		-0.7	59	86	24	53	-0.04	0.37

- level design, sound footed, maternal pedigree
- 39Z is a great uddered, heavy structured Wild West daughter who produced a \$24,000 female that sold to Big Sky Ranch of California. We also retained a beautiful Mulberry daughter of 39Z in our herd.
- *Calving Ease 1*
- *Dam's Average Wean Index: 101 (3 calves)*

17 RED SIX MILE RECKONING 977E

SIXM 977E · 1995034 · February 26, 2017

RED U-2 RECON 192Y DMF AMF CAF NHF OSF MAF DDF
RED U-2 RECKONING 149A AMF CAF NHF OSF MAF DDF
 RED U-2 ANEXA 271Y

RED HCG BRANDING IRON OSF MAF
RED SIX MILE LASSIE LEE 268C
 RED SIX MILE LASSIE 377P OSF

RED BRYLOR WEST JET 69W
 RED U-2 LARKABA 8133U OSF
 RED HOWE MAGNUM 169W
 RED U-2 ANEXA 333N
 RED HXC BIG IRON 0024X AMF CAF NHF OSF MAF
 RED HXC JAYLO LB136 OSF
 RED TOWAW INDEED 104H OSF
 RED SILVERVIEW LASSIE 307C

BW	WW	Index	YW	Index	EPDs	BW	WW	YW	Milk	TM	REA	Marb
80	668	101	1149	96		-1.1	54	88	22	49	-0.1	0.47

- Calving Ease, proven maternal lineage, balanced EPD profile
- 268C is a moderate, good uddered female from the infamous "Lassie" cow family. We expect big things from this female in the future.
- *Calving Ease 4*

18 RED SIX MILE RECKONING 933E

SIXM 933E · 1995180 · February 23, 2017

RED U-2 RECON 192Y DMF AMF CAF NHF OSF MAF DDF
RED U-2 RECKONING 149A AMF CAF NHF OSF MAF DDF
 RED U-2 ANEXA 271Y

RED UBAR SEQUOIA 202 OSF
RED BRYLOR VIDALIA 180S
 RED MEADOW CK MISS SEAMAN 31A

RED BRYLOR WEST JET 69W
 RED U-2 LARKABA 8133U OSF
 RED HOWE MAGNUM 169W
 RED U-2 ANEXA 333N
 RED BJR HIGH CAPACITY 008 OSF MAF
 RED FORSTER COPPRQUEEN 7168 OSF
 RED SEAMAN CHIEF 47Y
 RED MEADOW CK PRINCESS 10W

BW	WW	Index	YW	Index	EPDs	BW	WW	YW	Milk	TM	REA	Marb
84	744	114	1249	101		1.2	59	89	22	51	-0.06	0.27

- efficient type, long bodied, smooth shouldered
- 180S is the definition of longevity in the Six Mile herd as she is still producing at 12 years of age with an impeccable udder.
- *Calving Ease 2*
- *Dam's Average Wean Index: 106 (6 calves at Six Mile)*

19 RED SIX MILE RECKONING 135E

SIXM 135E · 1995143 · March 08, 2017

RED U-2 RECON 192Y DMF AMF CAF NHF OSF MAF DDF
RED U-2 RECKONING 149A AMF CAF NHF OSF MAF DDF
 RED U-2 ANEXA 271Y

RED L83 SUPER DUTY 244Z
RED SIX MILE LADY HAWK 476C
 RED SIX MILE LADY HAWK 513R

RED BRYLOR WEST JET 69W
 RED U-2 LARKABA 8133U OSF
 RED HOWE MAGNUM 169W
 RED U-2 ANEXA 333N
 RED SIX MILE KING RANCH 721W OSF
 RED L83 BERTHA 077
 RED HOWE EXPEDITION 97N
 RED SHODEREE LADY HAWK 17H

BW	WW	Index	YW	Index	EPDs	BW	WW	YW	Milk	TM	REA	Marb
78	650	98	1178	106		-0.9	54	86	22	49	-0.09	0.35

- excellent hair coat, sound footed, balanced EPD profile
- 476C stems from the high performing "Lady Hawk" cow family.
- *Calving Ease 4*

20 RED SIX MILE ESPIONAGE 418E

SIXM 418E · 1994996 · April 01, 2017

RED U-2 RECON 192Y DMF AMF CAF NHF OSF MAF DDF
RED U-2 RECKONING 149A AMF CAF NHF OSF MAF DDF
 RED U-2 ANEXA 271Y

RED SOO LINE WILDCARD 7052
RED SIX MILE INATEX 750A
 RED MEM INATEX 13S

RED BRYLOR WEST JET 69W
 RED U-2 LARKABA 8133U OSF
 RED HOWE MAGNUM 169W
 RED U-2 ANEXA 333N
 RED BCAR WILD CARD
 RED SOO LINE BANE BERRY 5238 OSF
 RED GEFB BEEFMAKER 2101
 RED MEM INATEX 13L

BW	WW	Index	YW	Index	EPDs	BW	WW	YW	Milk	TM	REA	Marb
86	717	104	1337	128		0.2	58	85	27	56	-0.15	0.33

- stretchy, large outlined, later maturing, April birth date
- 750A is a cow that truly puts it all into her calves. Heavy milking, refined make-up, dark red. 750A raised a high selling female to Duralta Farms in Genetic Focus 2016.
- *Calving Ease 2*
- *Dam's Average Wean Index 117 (3 calves)*

21 RED SIX MILE RECKONING 448E

SIXM 448E · 1995051 · April 06, 2017

RED U-2 RECON 192Y DMF AMF CAF NHF OSF MAF DDF
RED U-2 RECKONING 149A AMF CAF NHF OSF MAF DDF
 RED U-2 ANEXA 271Y

RED SIX MILE TUFF ENUF 111Z OSF MAF
RED SIX MILE LACEY 167C
 RED L83 LACEY 157

RED BRYLOR WEST JET 69W
 RED U-2 LARKABA 8133U OSF
 RED HOWE MAGNUM 169W
 RED U-2 ANEXA 333N
 RED SIX MILE RAWHIDE 222X OSF MAF
 RED BAR-E-L DIAMOND 111T
 RED SIX MILE TIDAL WAVE 254T OSF DDF
 RED L83 LACEY 839

BW	WW	Index	YW	Index	EPDs	BW	WW	YW	Milk	TM	REA	Marb
86	798	117	1308	105		1.7	69	99	20	54	-0.07	0.29

- muscle dimension, maternal oriented, deep sided, April birth date
- 167C is a good uddered Tuff Enuff daughter with extra rib dimension and a super sound hind leg set.
- *Calving Ease 1*

22 RED SIX MILE CHALLENGER 871E

SIXM 871E · 1995032 · February 17, 2017

RED U-2 RECKONING 149A AMF CAF NHF OSF MAF DDF
RED SIX MILE CHALLENGER 265C OSF MAF
 RED SIX MILE MS PATHY 511A

RED SIX MILE GAME FACE 164Y AMF NHF OSF MAF
RED SIX MILE LASA LEE 183C
 RED SIX MILE LASA LEE 562A

RED U-2 RECON 192Y DMF AMF CAF NHF OSF MAF DDF
 RED U-2 ANEXA 271Y
 RED VGW GAME PLAN 816 AMF NHF OSF MAF
 RED SIX MILE MS PATHY 396Y
 RED VGW GAME PLAN 816 AMF NHF OSF MAF
 RED SIX MILE LAKOTO 35W OSF MAF
 RED BRYLOR REDWOOD 50U AMF NHF OSF MAF
 RED SIX MILE LASA 695L

BW	WW	Index	YW	Index	EPDs	BW	WW	YW	Milk	TM	REA	Marb
77	690	106	1248	112		-1.1	56	87	18	46	-0.01	0.34

- calving Ease, large outlined, long spined, balanced EPD profile
- 183C is a youthful designed Game Face daughter with ample milk production
- *Calving Ease 4*



Signature

SONS

Signature was our high selling bull in 2015. He took the Red Angus seedstock industry by storm in 2016 where his semen consistently commanded over \$650/dose. This sale represents his second calf crop and we really like the shape and design of these calves. He adds frame, dimension and a dark color to his progeny. We have just calved the first Signature daughters and we could not be happier with their udder structure and mothering ability.



Red Double B Autograph, Signature Son



Signature, Summer 2015

23 RED SIX MILE SIGNATURE 991E

SIXM 991E • 1994987 • February 27, 2017

RED SIX MILE GRAND SLAM 130Z AMF NHF OSF MAF
RED SIX MILE SIGNATURE 295B AMF NHF OSF MAF DDF
 RED SELMA OF SIX MILE 358X

RED SIX MILE INTRIGUE 348X CAF OSF MAF
RED JEFFRIES MS PRIDE A324 OSF
 RED JEFFRIES W577 OSF

RED VGW GAME PLAN 816 AMF NHF OSF MAF
 RED SIX MILE REBECCA 216X
 RED SIX MILE UNLEASHED 595U
 RED RSL MISS SELMA 384F OSF

PEAK DOT PREDOMINANT 135S
 RED SIX MILE MINERVA 681R OSF MAF
 RED FINE LINE MULBERRY 26P AMF OSF MAF DDF
 RED JEFFRIES PR PRIDE 1207P314

BW	WW	Index	YW	Index	EPDs	BW	WW	YW	Milk	TM	REA	Marb
84	664	100	1317	126	0.5	61	112	14	45	0.06	0.31	

- large outlined, later maturing, smooth shouldered
- 324A is a youthful and refined young female from Jefferies Land and Cattle. Son working for Harvey Hind.
- **Calving Ease 2**
- **Dam's Average Wean Index 101 (3 calves)**

Lot 24

- long spined, herd bull presence, exciting genetic profile
- 125S is a designated "Elite Dam" for us and she raised the 2012 Grand Champion Female at NWSS. 125S was our top pick from the Soo Line Dispersal. Dark red, tidy udder and larger framed donor cow.
- *Calving Ease 1*



Dam of Lot 24



Lot 24

24

RED SIX MILE SIGNATURE 85E

SIXM 85E • 2003770 • March 05, 2017

RED SIX MILE GRAND SLAM 130Z AMF NHF OSF MAF
RED SIX MILE SIGNATURE 295B AMF NHF OSF MAF DDF
 RED SELMA OF SIX MILE 358X

RED TER-RON REBEL 102N
RED SOO LINE COUNTESS 6125 OSF MAF
 RED SOO COUNTESS 3211

RED VGW GAME PLAN 816 AMF NHF OSF MAF
 RED SIX MILE REBECCA 216X
 RED SIX MILE UNLEASHED 595U
 RED RSL MISS SELMA 384F OSF

RED LAZY MC DIVIDE 8J
 RED TER-RON MISSMAE 102K
 RED BAR-E-L APPROVAL 4L
 RED GET-A-LONG COUNTESS 960

BW	WW	Index	YW	Index	EPDs	BW	WW	YW	Milk	TM	REA	Marb
96	741	109	1363	127	1.7	55	88	18	45	0.03	0.26	

25

RED SIX MILE SIGNIFICANT 142E

SIXM 142E • 2003743 • March 08, 2017

RED SIX MILE GRAND SLAM 130Z AMF NHF OSF MAF
RED SIX MILE SIGNATURE 295B AMF NHF OSF MAF DDF
 RED SELMA OF SIX MILE 358X

RED 5L NORSEMAN KING 2291 OSF MAF
RED SIX MILE GLORIA 746W OSF MAF
 RED SIX MILE GLORIA 361T OSF MAF

RED VGW GAME PLAN 816 AMF NHF OSF MAF
 RED SIX MILE REBECCA 216X
 RED SIX MILE UNLEASHED 595U
 RED RSL MISS SELMA 384F OSF

RED VGW KING OF THE WEST OSF MAF
 RED NORSEMAN 1312 PJM
 RED SIX MILE RICOCHET 478R
 RED SIX MILE GLORIA 182N

BW	WW	Index	YW	Index	EPDs	BW	WW	YW	Milk	TM	REA	Marb
88	812	122	1388	118	1.4	54	87	20	47	0.1	0.32	

Lot 25

- Dark red, big topped, heavy muscled, sound footed, sale feature
- 746W is a donor cow from the "Gloria" cow family. 746W genetics have been in high demand in recent years as she adds front end extension and skeletal dimension to her progeny.
- *Calving Ease 1*



Dam of Lot 25



Lot 25



Lot 26 pictured

26

RED SIX MILE ELEMENT 10E

SIXM 10E · 2005335 · March 01, 2017

RED SIX MILE GRAND SLAM 130Z AMF NHF OSF MAF
RED SIX MILE SIGNATURE 295B AMF NHF OSF MAF DDF
 RED SELMA OF SIX MILE 358X

RED VGW GAME PLAN 816 AMF NHF OSF MAF
 RED SIX MILE REBECCA 216X
 RED SIX MILE UNLEASHED 595U
 RED RSL MISS SELMA 384F OSF

BLACK WHEEL ODYSSEY 117U
RED U6 ALANA 13X CAF OSF MAF DDF
 RED U6 ALANA 65T

BLACK WHEEL ODYSSEY 2M
 RED WHEEL BRIDGET 7P OSF
 RED U6 TWENTY X 29P
 RED U6 ALANA 12K

BW	WW	Index	YW	Index	EP DS	BW	WW	YW	Milk	TM	REA	Marb
80	683	102	1344	130	0.8	54	85	21	48	-0.05	0.36	

27

RED SIX MILE SIGNATURE 74E

SIXM 74E · 2003767 · March 04, 2017

RED SIX MILE GRAND SLAM 130Z AMF NHF OSF MAF
RED SIX MILE SIGNATURE 295B AMF NHF OSF MAF DDF
 RED SELMA OF SIX MILE 358X

RED VGW GAME PLAN 816 AMF NHF OSF MAF
 RED SIX MILE REBECCA 216X
 RED SIX MILE UNLEASHED 595U
 RED RSL MISS SELMA 384F OSF

BLACK WHEEL ODYSSEY 117U
RED U6 ALANA 13X CAF OSF MAF DDF
 RED U6 ALANA 65T

BLACK WHEEL ODYSSEY 2M
 RED WHEEL BRIDGET 7P OSF
 RED U6 TWENTY X 29P
 RED U6 ALANA 12K

BW	WW	Index	YW	Index	EP DS	BW	WW	YW	Milk	TM	REA	Marb
92	719	106	1369	129	0.8	54	85	21	48	-0.05	0.36	

- dark red, smooth made, sale feature
- 13X is a donor dam for Six Mile and Niobrara Red Angus that was designated "Elite" in 2016. She has produced over \$165,000 worth of progeny in the past 4 years, most notably High Caliber in 2016.
- *Calving Ease 2*



Sire of Lots 26, 27



Dam of Lots 26, 27



Eliminator Daughter

Eliminator SONS

Eliminator 100Z was our choice to add the SAV Predominant and SAV Eliminator 9105 genetics to our red herd. He stems from a CAA ELITE donor dam in the Peak Dot Black Angus herd . She boasts an impeccable udder that we are seeing that carry through to Eliminator's daughters. The Eliminator offspring display an easy-fleshing, loose hided look; in a sound, flexible package. His daughters have done a phenomenal job in production (see Lot 2 & 5).



Lot 28

28

RED SIX MILE OUTSIDER 883E

SIXM 883E · 1995202 · February 19, 2017

PEAK DOT ELIMINATOR 100Z
RED SIX MILE OUTSIDER 387C OSF MAF
RED STEWART INA 611S

RED T-K SUM-MIT 28T AMF NHF OSF MAF
RED SIX MILE BRIDGET 383Z
RED GRAHAM BRIDGET 529R

S A V ELIMINATOR 9105 AMF CAF NHF OSF
ERICA OF PEAK DOT 730T
RED YY RAMBLER 322N
RED YY INA 348N
RED T-K PERCISION 21P
RED BWB TROPHY 4'02 OF CANYON OSF
RED BAKERS CENTURY
RED HARRON BRIDGET 29L

BW	WW	Index	YW	Index	EPDs	BW	WW	YW	Milk	TM	REA	Marb
88	679	102	1281	120	0	51	82	17	43	-0.09	0.48	

- Feed efficient, soggy middle, outcross pedigree
- 383Z is a feminine, attractive young cow with a tidy udder.
- *Calving Ease 2*



Sire of Lot 28



Lot 29 pictured

29 RED SIX MILE ELIMINATION 840E

SIXM 840E · 1994782 · February 12, 2017

S A V ELIMINATOR 9105 AMF CAF NHF OSF
PEAK DOT ELIMINATOR 100Z
 ERICA OF PEAK DOT 730T

RED TOWAW INDEED 104H OSF
RED SIX MILE LARKISA 232T
 RED SIX MILE LARKISA 46G

RITO 707 OF IDEAL 3407 7075
 S A V ABIGALE 5646
 S A V 004 PREDOMINANT 4438 AMF CAF OHF NHF DDF
 PEAK DOT TRAFALGAR 518K

RED CC EXPANSION 5E
 RED TOWAW MOLLY 67C
 RED SIX MILE ICE "T" 796E
 RED VIDAL'S LARKISA 255C

BW	WW	Index	YW	Index	EPDS	BW	WW	YW	Milk	TM	REA	Marb
84	716	109	1340	125	0.4	69	123	28	62	-0.02	.47	

- This herdsire prospect has developed as a sale highlight with his unique pedigree, exceptional EPD's and phenotypic qualities. 840E is smooth made, deep bodied, correct in his lines and extremely comfortable when set in motion. 840E's dam is a designated "Premier Dam" and still producing at 11 years of age. 232T is dark red, solid footed and one of the most consistent producing Indeed daughters in our herd.
- *Retaining 1/3 Semen Interest*
- *Dam's Average Wean Index: 107 (8 calves)*
- *Calving Ease 1*



Sire of Lot 29



Lot 30 pictured

30 RED SIX MILE ELIMINATOR 241E
SIXM 241E · 1995187 · March 16, 2017

S A V ELIMINATOR 9105 AMF CAF NHF OSF
PEAK DOT ELIMINATOR 100Z
ERICA OF PEAK DOT 730T

RED GLESBAR EXCEL 11R
RED GLESBAR BARBIE 68Y
GLESBAR BARBIE 008U

RITO 707 OF IDEAL 3407 707S
S A V ABIGALE 5646
S A V 004 PREDOMINANT 4438 AMF CAF OHF NHF DDF
PEAK DOT TRAFALGAR 518K
RED GLESBAR EXPANSION 81K
RED GEIS SYRINGA 160'91
RED DMM TRACTION 98R
GLESBAR BARBIE 12J

BW	WW	Index	YW	Index	EPDs	BW	WW	YW	Milk	TM	REA	Marb
90	648	96	1251	121	1.1	58	101	23	52	0.07	0.47	

- striking profile, shapely design, structurally sound
- 68Y was the lead off Lot 1 female from the Glesbar Dispersal in 2015
- *Retaining 1/3 Semen Interest*
- *Calving Ease 1*
- *Dam's Average Wean Index 98 (5 calves)*



Dam of Lot 30



Lot 31

31 RED SIX MILE ENTRAPMENT 992E

SIXM 992E · 1994988 · February 27, 2017

S A V ELIMINATOR 9105 AMF CAF NHF OSF
PEAK DOT ELIMINATOR 100Z
 ERICA OF PEAK DOT 730T

RED SOO LINE WILDCARD 7052
RED SIX MILE LANA 622A
 RED SIX MILE LANA 857S

RITO 707 OF IDEAL 3407 7075
 S A V ABIGALE 5646
 S A V 004 PREDOMINANT 4438 AMF CAF OHF NHF DDF
 PEAK DOT TRAFALGAR 518K

RED BCAR WILD CARD
 RED SOO LINE BANE BERRY 5238 OSF
 RED BRYLOR NEW TREND 22D OSF MAF
 RED SIX MILE LANA 984N

BW	WW	Index	YW	Index	EPDs	BW	WW	YW	Milk	TM	REA	Marb
88	730	110	1311	116		0.4	65	107	27	60	0.06	0.45

- exceptional quality, massive ribbed, loose hidied, moves like a cat
- 622A is a large outlined, feminine featured Wildcard female that has one daughter working at Big Sky Ranch and one retained in the Six Mile herd.
- *Calving Ease 1*
- *Dam's Average Wean Index 104 (2 calves)*



Lot 32

32 RED SIX MILE ELI 835E

SIXM 835E · 1994980 · February 11, 2017

S A V ELIMINATOR 9105 AMF CAF NHF OSF
PEAK DOT ELIMINATOR 100Z
 ERICA OF PEAK DOT 730T

RED BRYLOR REDWOOD 50U AMF NHF OSF MAF
RED SIX MILE LASA LEE 562A
 RED SIX MILE LASA 695L

RITO 707 OF IDEAL 3407 7075
 S A V ABIGALE 5646
 S A V 004 PREDOMINANT 4438 AMF CAF OHF NHF DDF
 PEAK DOT TRAFALGAR 518K

RED BRYLOR SDL REDWOOD 217S OSF MAF
 RED NDCC MISS BONITA 329N
 RED SIX MILE RED HOT 502D
 RED BOUNTY B LASA 107C

BW	WW	Index	YW	Index	EPDs	BW	WW	YW	Milk	TM	REA	Marb
88	644	96	1184	108		-0.4	57	98	23	52	0.19	0.45

- loose hidied, deep ribbed, dark red color
- 562A is a feminine featured, hardworking daughter of the now deceased Redwood. One daughter retained in herd (183C dam of Lot 22).
- *Calving Ease 2*
- *Dam's Average Wean Index 97 (3 calves)*



Lot 33

33 RED SIX MILE ELIMINATOR 879E

SIXM 879E · 1995176 · February 18, 2017

S A V ELIMINATOR 9105 AMF CAF NHF OSF
PEAK DOT ELIMINATOR 100Z
 ERICA OF PEAK DOT 730T

RED SPRING CREEK BARNEY 3S
RED BROWNALTA BRIDGET 66W
 RED BROWNALTA HI LINE 30M

RITO 707 OF IDEAL 3407 7075
 S A V ABIGALE 5646
 S A V 004 PREDOMINANT 4438 AMF CAF OHF NHF DDF
 PEAK DOT TRAFALGAR 518K

RED ROYAL BARNEY 113L
 RED MAC MISS HB 7G
 RED SPRING CREEK HIGH POWER 7J
 RED BROWNALTA BANDIT 32J

BW	WW	Index	YW	Index	EPDs	BW	WW	YW	Milk	TM	REA	Marb
92	697	104	1337	128		-0.3	55	90	27	54	-0.01	0.46

- large outlined, high performing, athletic build
- 66W offers a tight correct udder and continues to bring home high performing offspring. A full sister to Lot 33 just calved and is as close to perfect as you can make one.
- *Calving Ease 2*
- *Dam's Average Wean Index 105 (7 calves)*

34 RED SIX MILE ELIMINATOR 158E

SIXM 158E · 2002802 · March 09, 2017

S A V ELIMINATOR 9105 AMF CAF NHF OSF
PEAK DOT ELIMINATOR 100Z
 ERICA OF PEAK DOT 730T

RED SIX MILE RAWHIDE 222X OSF MAF
RED SIX MILE FANNY 460Z
 RED SIX MILE FANNY 846M

RITO 707 OF IDEAL 3407 7075
 S A V ABIGALE 5646
 S A V 004 PREDOMINANT 4438 AMF CAF OHF NHF DDF
 PEAK DOT TRAFALGAR 518K
 RED LAZY MC SMASH 41N OSF
 RED YY TAFFETA 306N OSF MAF
 RED TOWAW INDEED 104H OSF
 RED BOUNTY B FANNY RAE 35E

BW	WW	Index	YW	Index	EPDs	BW	WW	YW	Milk	TM	REA	Marb
92	687	102	1336	130		-0.3	64	107	22	54	0.09	0.43

- red meat machine, dark red pigment, exceptional growth curve
- 460Z is a member of the “Fanny” cow family that are heavy milking, feminine designed momma cows.
- *Calving Ease 2*
- *Dam’s Average Wean Index 102 (2 calves)*



Lot 34

35 RED SIX MILE ELIMINATOR 143E

SIXM 143E · 1995213 · March 08, 2017

S A V ELIMINATOR 9105 AMF CAF NHF OSF
PEAK DOT ELIMINATOR 100Z
 ERICA OF PEAK DOT 730T

RED SIX MILE AVIATION 712S
RED SIX MILE BARBIE 296Z
 RED ROSE HILL BARBIE 3T

RITO 707 OF IDEAL 3407 7075
 S A V ABIGALE 5646
 S A V 004 PREDOMINANT 4438 AMF CAF OHF NHF DDF
 PEAK DOT TRAFALGAR 518K
 RED SIX MILE AVIATOR 217P OSF
 RED SIX MILE PATSY 256P OSF MAF
 ROSE HILL ROYCE 8N
 ROSE HILL MISS BARBIE 5H

BW	WW	Index	YW	Index	EPDs	BW	WW	YW	Milk	TM	REA	Marb
84	609	90	1192	116		-0.5	54	93	23	50	0.16	0.43

- smooth made, long bodied, dark red
- 296Z is an unassuming, hardworking, good uddered Aviation daughter who injects maternal Calving Ease into her offspring. 2 daughters retained in herd (329C dam of Lot 61)
- *Calving Ease 3*
- *Dam’s Average Wean Index 98 (4 calves)*



Lot 35

36 RED SIX MILE ELIMINATOR 859E

SIXM 859E · 1995175 · February 16, 2017

S A V ELIMINATOR 9105 AMF CAF NHF OSF
PEAK DOT ELIMINATOR 100Z
 ERICA OF PEAK DOT 730T

RED TER-RON FULLY LOADED 540R AMF OSF
RED SIX MILE FANNY 178T
 RED SIX MILE FANNY 846M

RITO 707 OF IDEAL 3407 7075
 S A V ABIGALE 5646
 S A V 004 PREDOMINANT 4438 AMF CAF OHF NHF DDF
 PEAK DOT TRAFALGAR 518K
 RED HEARTLAND KNIGHT CHARM 11L
 RED TER-RON GOLDIE 240L
 RED TOWAW INDEED 104H OSF
 RED BOUNTY B FANNY RAE 35E

BW	WW	Index	YW	Index	EPDs	BW	WW	YW	Milk	TM	REA	Marb
96	634	93	1259	125		2.8	71	122	18	53	0.1	0.42

- blood red color, extra hair, exceptional foot shape
- 178T is another member of the “Fanny” family. Sons working for Rack Red Angus and Bruce Flynn. Daughters in production for Sunberry Valley Farms and Raina Syrnyk. Two daughters retained in Six Mile herd.
- *Calving Ease 1*
- *Dam’s Average Wean Index 99 (8 calves)*



Lot 36

Barry

SONS



Barry was a true diamond in the rough. He came to us from our good friends at Halls Cattle Company. We admired his deep dark red color and his superior foot quality; it is now evident he passes these traits on to his offspring. His first calf crop was highlighted by "Sugarland" 514E who was Division Champion in Denver. Barry's mother is a gorgeous female now grazing the pastures here at Six Mile. If you are serious about improving the feet and udders in your cow herd without sacrificing shape and performance, we recommend looking at these Barry sons.

Red Six Mile Sugarland 514E
Fall 2017, NWSS 2018



Barry, Summer 2017

37 RED SIX MILE BARRY 248E

SIXM 248E · 1995011 · March 17, 2017

RED NORTHLINE ROB ROY 122K OSF MAF
RED HALL'S BARRY 040C OSF MAF
 RED BLAIRS ELORA 40X

RED WILD ROSE ROBIN HOOD 11F
 RED BAR EL SYBIL 122E
 RED WHEEL SIN CITY 43T AMF NHF OSF MAF
 RED JCC ELORA 71P

RED SIX MILE RUGER 221X OSF MAF
RED SIX MILE MS MAID 301B
 RED SIX MILE MAID 519K

RED SIX MILE ULTIMATUM 409U OSF
 RED SIX MILE SHAWNEE 116T OSF MAF
 RED SSS IMPRINT 143H
 RED SIX MILE MAID 154H

BW	WW	Index	YW	Index	EPDs	BW	WW	YW	Milk	TM	REA	Marb
80	697	106	1173	95		-0.5	54	81	21	48	0.05	0.16

- stout hipped, exceptional hair coat, maternal pedigree
- 301B is a long spined, attractive young cow who is just hitting her prime.
- *Calving Ease 3*
- *Dam's Average Wean Index: 102 (2 calves)*



Lot 38 pictured

38

RED SIX MILE ENFORCER 204E

SIXM 204E · 1994794 · March 12, 2017

RED NORTHLINE ROB ROY 122K OSF MAF
RED HALL'S BARRY 040C OSF MAF
 RED BLAIRS ELORA 40X

RED WILD ROSE ROBIN HOOD 11F
 RED BAR EL SYBIL 122E
 RED WHEEL SIN CITY 43T AMF NHF OSF MAF
 RED JCC ELORA 71P

RED SIX MILE TIMBERLAKE 180T AMF OSF
RED SIX MILE SEXY SYRINGA 264X
 RED SIX MILE SEXY SYRINGA 515U

RED TOWAW INDEED 104H OSF
 RED SHODEREE ECHETA 193N
 RED SIX MILE PRICELESS 268P
 RED SIX MILE SASY SYRINGA 234P OSF MAF

BW	WW	Index	YW	Index	EPDs	BW	WW	YW	Milk	TM	REA	Marb
85	758	116	1314	111	-0.2	65	103	25	55	-0.18	0.29	

- Sound footed, heavy structured, smooth made, maternal pedigree
- 204E is backed by gorgeous uddered mother from the prominent "Syringa" cow family. 264X raised an \$11,500 bull who went to L83 Ranch in Westhope, ND in 2016. 264X also has 3 daughters retained in the Six Mile herd (60Z dam of lot 7)
- *Selling Full Possession - Half Semen Interest*
- *Calving Ease 2*
- *Dam's Average Wean Index: 113 (5 calves)*



Dam of Lot 38



Lot 39



Dam of Lot 39

Lot 39

- deep sided, loose hidcd, maternal pedigree
- 255E's dam is a member of the "Bayberry" family who has never missed. 608U is a moderate framed mother cow with a beautiful udder and is the easy keeping type.
- *Calving Ease 2*
- *Dam's Average Wean Index: 109 (8 calves)*

39 RED SIX MILE ELDORADO 255E

SIXM 255E · 1994799 · March 17, 2017

RED NORTHLINE ROB ROY 122K OSF MAF
RED HALL'S BARRY 040C OSF MAF
 RED BLAIRS ELORA 40X

RED WILD ROSE ROBIN HOOD 11F
 RED BAR EL SYBIL 122E
 RED WHEEL SIN CITY 43T AMF NHF OSF MAF
 RED JCC ELORA 71P

RED RSL INNOVATOR 310P
RED SIX MILE BAYBERRY 608U
 RED SIX MILE BAYBERRY 120N

RED CROWFOOT INOVATOR 979J
 RED RSL TESSA RAE 514G
 RED CUMNOCK BLAZING 372J
 RED CUMNOCK BAYBERRY 713D

BW	WW	Index	YW	Index	EPDs	BW	WW	YW	Milk	TM	REA	Marb
88	759	115	1312	111		0.6	49	76	27	51	-0.16	0.23

40 RED SIX MILE BARRY 305E

SIXM 305E · 1995216 · March 21, 2017

RED NORTHLINE ROB ROY 122K OSF MAF
RED HALL'S BARRY 040C OSF MAF
 RED BLAIRS ELORA 40X

RED WILD ROSE ROBIN HOOD 11F
 RED BAR EL SYBIL 122E
 RED WHEEL SIN CITY 43T AMF NHF OSF MAF
 RED JCC ELORA 71P

RED SSS BUCC 30U OSF MAF
RED SIX MILE FLOWER 146Y
 RED LAZY RC FLOWER 564R

RED SSS OLE 353S OSF MAF
 RED SSS LARKABELLE 480S
 RED THAT'LL DO 35A CUB ET 37N
 RED LAZY RC FLOWER 187M

BW	WW	Index	YW	Index	EPDs	BW	WW	YW	Milk	TM	REA	Marb
85	688	104	1200	102		0.8	53	92	22	48	-0.06	0.18



Lot 40

Lot 40

- exception hair coat, heavy boned, attractive skull
- 146Y is a dark red, SSS Bucc daughter who always comes home with impressive calves. 146Y has daughters working for SSS Red Angus and Big Sky Cattle Ranch. 146Y also has two daughters retained in herd.
- *Calving Ease 2*
- *Dam's Average Wean Index: 102 (6 calves)*



Maternal sister to Lot 40

41

RED SIX MILE ELUSIVE 283E

SIXM 283E · 1994802 · March 20, 2017

RED NORTHLINE ROB ROY 122K OSF MAF
RED HALL'S BARRY 040C OSF MAF
 RED BLAIRS ELORA 40X

RED WILD ROSE ROBIN HOOD 11F
 RED BAR EL SYBIL 122E
 RED WHEEL SIN CITY 43T AMF NHF OSF MAF
 RED JCC ELORA 71P

RED SIX MILE WIND CHILL 828W OSF MAF
RED L83 FAYETTE 129
 RED L83 MISS MULBERRY 947

STEWART'S PRIMUS 52R
 RED SVR FAYE 5M OSF MAF
 RED FINE LINE MULBERRY 26P AMF OSF MAF DDF
 RED MCRAE'S EASTER 80H OSF

BW	WW	Index	YW	Index	EPDs	BW	WW	YW	Milk	TM	REA	Marb
94	737	111	1318	116		2	60	94	17	47	-0.11	0.1

- heavy structured, muscle shape and dimension, big topped
- 129Y is a sharp fronted, level uddered, hard-working Wind Chill daughter.
- *Calving Ease 1*
- *Dam's Average Wean Index: 104 (4 calves)*



Lot 41

42

RED SIX MILE EDELMAN 208E

SIXM 208E · 1994795 · March 12, 2017

RED NORTHLINE ROB ROY 122K OSF MAF
RED HALL'S BARRY 040C OSF MAF
 RED BLAIRS ELORA 40X

RED WILD ROSE ROBIN HOOD 11F
 RED BAR EL SYBIL 122E
 RED WHEEL SIN CITY 43T AMF NHF OSF MAF
 RED JCC ELORA 71P

RED SIX MILE RAWHIDE 222X OSF MAF
RED SIX MILE MS EXTRA 206Z
 RED SIX MILE MS EXTRA 783W

RED LAZY MC SMASH 41N OSF
 RED YY TAFFETA 306N OSF MAF
 RED SIX MILE TIMBERLAKE 180T AMF OSF
 RED SIX MILE MS EXTRA 210T

BW	WW	Index	YW	Index	EPDs	BW	WW	YW	Milk	TM	REA	Marb
87	707	107	1215	102		-0.7	56	82	17	44	-0.05	0.24

- sound footed, proud fronted, size and scope of a herd bull
- 206Z is a moderate framed, tight uddered, hard-working Rawhide daughter. 206Z raised a 2016 Genetic Focus sale feature who is now working for Ray Paslowski. One daughter retained in herd
- *Calving Ease 2*
- *Dam's Average Wean Index: 99 (4 calves)*



Lot 42

43

RED SIX MILE FRONTIER 803E

SIXM 803E · 1968327 · January 19, 2017

RED BRYLOR RED KODIAK 3A AMF NHF OSF MAF
RED LWNBRG FRONTIER 28C
 RED TED RED TED PATRIOT 66Z

BLACK BRYLOR KODIAK 204Y OSF
 RED BRYLOR FAYETTE 40Y
 RED GLACIER MARIAS 548 OSF MAF
 RED TED BRANDED BEEF 22T

RED ANDRAS FUSION R236 AMF CAF NHF OSF MAF
RED LWNBRG FUSION 157C
 RED TED SHOCHO DATA 18W

RED ANDRAS IN FOCUS B175
 RED ANDRAS BELLE B167
 RED SHOCHO DATA OSF MAF
 RED TED COMBINATION 40R

BW	WW	Index	YW	Index	EPDs	BW	WW	YW	Milk	TM	REA	Marb
85	713	100	1259	100		-1.5	58	84	19	48	-0.07	0.27

- Stretchy, fresh Calving Ease genetics
- 157C was our pick from Leeuwenburgh's bred heifers in 2016. Gorgeous uddered, big middled from a proven cow family.
- *Calving Ease 3*

44

RED SIX MILE BIG LEAGUE 111E

SIXM 111E · 2004766 · March 06, 2017

RED U-2 BIG LEAGUE 544R
RED U-2 BIG LEAGUE 7136T
 RED STEWART PINOLA 1L

RED LCC MAJOR LEAGUE A502M OSF MAF
 RED U-2 ANEXA 09E
 RED BJR RAMBLER 5162 OSF
 RED STEWART PINOLA 2'99

RED TOWAW INDEED 104H OSF
RED SIX MILE MINERVA 681R OSF MAF
 RED CUMNOCK MINERVA 910F

RED CC EXPANSION 5E
 RED TOWAW MOLLY 67C
 RED RIVERDALE 747C
 RED CUMNOCK MINERVA 385B

BW	WW	Index	YW	Index	EPDs	BW	WW	YW	Milk	TM	REA	Marb
84	702	105	1411	130		-0.5	58	85	16	45	-0.14	0.25

- big framed, sleek made, proud fronted
- 681R was designated "Elite Dam" in 2011. Previous sons have sold to Merles Kress, Jessi-D Farms, Bluff Creek Ranch, Jefferies Land and Cattle and Trevor Simonson. One daughter retained in herd.
- *Calving Ease 3*
- *Dam's Average Wean Index: 108 (5 calves)*

Branding Iron was a sire we found to inject extra grow and stretch into our bull pen and cow herd. His calves hit the scales with increased pounds at weaning and yearling. With Branding Iron daughters now in production, it is noticeable that these growth advantages are multi-generational. The Branding Iron sons in this sale are our most consistent and highest quality group to date.



Branding Iron SONS



Branding Iron Daughter



Branding Iron Son



Branding Iron Daughter



Red Six Mile Crowsnest, Maternal Brother to Lot 45

45

RED SIX MILE E.T. 271E

SIXM 271E · 1994801 · March 19, 2017

RED HXC BIG IRON 0024X AMF CAF NHF OSF MAF
RED HCG BRANDING IRON OSF MAF
 RED HXC JAYLO LB136 OSF

RED BECKTON NEBULA P P707 OSF
 RED HXC 825U
 RED BJR MAKE MY DAY 981 OSF MAF
 RED HXC JAYLO 953J

RED VGW GAME PLAN 816 AMF NHF OSF MAF
RED SIX MILE BERRY 373X
 RED SIX MILE BERRY 435U

RED VGW GAME PLAN 508 AMF OSF MAF
 RED VGW TW DOLL 0270
 RED SIX MILE PRICELESS 268P
 RED SIX MILE BERY 849M

BW	WW	Index	YW	Index	EPDs	BW	WW	YW	Milk	TM	REA	Marb
86	759	116	1344	117	-0.8	65	111	21	54	-0.09	0.59	

- Huge BW to YW spread, exceptional maternal pedigree, smooth made
- 373X is a powerhouse producer from our "Berry" cow family. 373X produced a feature female in our 2013 sale that sold to Josh Tolbert. 373X's son last year sold to Leeuwenburgh Angus.
- **Calving Ease 2**
- **Dam's Average Wean Index: 114 (5 calves)**



Lot 46

Lot 46

- sale feature, power with design, curve bending growth profile
- 203Y is a big bodied, level-uddered member of our "Pride" cow family. She raised a high performing son that is now working at our good friends, Zak Organics. Make sure you try their "Crunchy Peas"!
- *Calving Ease 2*

46 RED SIX MILE BRANDIN IRON 120E

SIXM 120E · 1995211 · March 07, 2017

RED HXC BIG IRON 0024X AMF CAF NHF OSF MAF
RED HCG BRANDING IRON OSF MAF
 RED HXC JAYLO LB136 OSF

RED SSS BUCC 30U OSF MAF
RED SIX MILE PRIDE 203Y
 RED PRIDE OF SIX MILE 520R OSF

RED BECKTON NEBULA P P707 OSF
 RED HXC 825U
 RED BJR MAKE MY DAY 981 OSF MAF
 RED HXC JAYLO 953J

RED SSS OLE 353S OSF MAF
 RED SSS LARKABELLE 480S
 RED WILDMAN DENALI 19L OSF
 RED PTTV PRIDE 3'97 OSF

BW	WW	Index	YW	Index	EFPDs	BW	WW	YW	Milk	TM	REA	Marb
84	707	107	1334	125	0.0	65	124	17	50	0.02	0.29	

47 RED SIX MILE BULLSEYE 922E

SIXM 922E · 1994785 · February 22, 2017

RED HXC BIG IRON 0024X AMF CAF NHF OSF MAF
RED HCG BRANDING IRON OSF MAF
 RED HXC JAYLO LB136 OSF

RED VGW GAME PLAN 816 AMF NHF OSF MAF
RED SIX MILE BAYBERRY 347Z
 RED SIX MILE BAYBERRY 434X

RED BECKTON NEBULA P P707 OSF
 RED HXC 825U
 RED BJR MAKE MY DAY 981 OSF MAF
 RED HXC JAYLO 953J

RED VGW GAME PLAN 508 AMF OSF MAF
 RED VGW TW DOLL 0270
 RED SIX MILE SAKI 832S OSF MAF
 CUMNOCK BAYBERRY 503K

BW	WW	Index	YW	Index	EFPDs	BW	WW	YW	Milk	TM	REA	Marb
84	694	105	1311	123	-0.3	71	130	16	52	-0.05	0.57	



Lot 47

Lot 47

- Explosive growth curve, wide gauged, loose hid, rugged design, sale feature
- 347Z is a hard-working, larger framed Game Plan daughter. She exhibits a beautiful udder with near perfect teat placement.
- *Calving Ease 3*
- *Dam's Average Wean Index: 104 (4 calves)*



Lot 48

48

RED SIX MILE BUCKEYE 193E

SIXM 193E · 1994793 · March 11, 2017

RED HXC BIG IRON 0024X AMF CAF NHF OSF MAF
RED HCG BRANDING IRON OSF MAF
 RED HXC JAYLO LB136 OSF

RED SIX MILE RAWHIDE 222X OSF MAF
RED SIX MILE CHETA 381Z OSF
 RED SIX MILE CHETA 355J

RED BECKTON NEBULA P P707 OSF
 RED HXC 825U
 RED BJR MAKE MY DAY 981 OSF MAF
 RED HXC JAYLO 953J

RED LAZY MC SMASH 41N OSF
 RED YY TAFFETA 306N OSF MAF
 RED CROWFOOT DIVIDE 656F
 RED BOUNTY B CHETA 91C

BW	WW	Index	YW	Index	EPDs	BW	WW	YW	Milk	TM	REA	Marb
78	782	121	1399	123		-1.2	67	125	19	52	0.06	0.56

- loose hidcd, long spined, top 5% WW, YW, TM, CW, MAR
- 381Z is designated "Elite Dam" since 2018. She is a moderate framed, perfect uddered cow who puts everything she has into her progeny. 381Z has bulls working for Leeuwenburg Angus and L83 Ranch. She also has one daughter retained in the Six Mile herd.
- *Calving Ease 3*
- *Dam's Average Wean Index: 113 (4 calves)*



Lot 49

49

RED SIX MILE BRANDIN IRON 425E

SIXM 425E · 1994997 · April 01, 2017

RED HXC BIG IRON 0024X AMF CAF NHF OSF MAF
RED HCG BRANDING IRON OSF MAF
 RED HXC JAYLO LB136 OSF

RED SIX MILE QUEST 117Y OSF MAF
RED SIX MILE LAKOTA 848A
 RED SIX MILE LAKOTA 113Y

RED BECKTON NEBULA P P707 OSF
 RED HXC 825U
 RED BJR MAKE MY DAY 981 OSF MAF
 RED HXC JAYLO 953J

RED SSS BUCC 30U OSF MAF
 RED SIX MILE MS. UMPIRE 279P
 RED VGW GAME PLAN 816 AMF NHF OSF MAF
 RED SIX MILE LAKOTA 16W OSF MAF

BW	WW	Index	YW	Index	EPDs	BW	WW	YW	Milk	TM	REA	Marb
84	752	110	1415	128		-0.5	66	130	23	55	-0.03	0.4

- chunky, soft sided, efficient type, maternal worth
- 848A is a moderate, beautifully uddered Quest daughter coming from our popular "Lakota" cow family. 848A has a daughter working for us at Six Mile (439C dam of Lot 82) and her bull in last year's sale sold to Ferme Migneault of Quebec.
- *Calving Ease 2*
- *Dam's Average Wean Index: 121 (3 calves)*



Lot 50

50

RED SIX MILE BRANDING IRON 33E

SIXM 33E · 1995036 · March 02, 2017

RED HXC BIG IRON 0024X AMF CAF NHF OSF MAF
RED HCG BRANDING IRON OSF MAF
 RED HXC JAYLO LB136 OSF

RED SIX MILE YAHTZEE 130Y
RED SIX MILE BERY 563B
 RED SIX MILE BERY 404Z

RED BECKTON NEBULA P P707 OSF
 RED HXC 825U
 RED BJR MAKE MY DAY 981 OSF MAF
 RED HXC JAYLO 953J

RED BCC CRIMSON JEWELS 102U
 RED BROWNALTA BRIDGET 66W
 RED SIX MILE TIMBERLINE 880W OSF MAF
 RED SIX MILE BERY 531X

BW	WW	Index	YW	Index	EPDs	BW	WW	YW	Milk	TM	REA	Marb
86	666	100	1226	112		-0.4	54	96	16	42	-0.04	0.49

- dark red, smooth shouldered, Calving Ease with performance
- 563B is a hard-working, refined young cow here at Six Mile who injects maternal Calving Ease into her offspring.
- *Calving Ease 2*



Lot 51



Dam of Lot 51

Lot 51

- double bred Calving Ease, exceptional quality, youngest bull in the sale
- 142B is a drop dead gorgeous momma cow. Sound structured, big middle, perfect udder, elite angus front end.
- **Calving Ease 4**

51

RED SIX MILE EDDIE 500E

SIXM 500E · 2000816 · April 17, 2017

RED VGW TREMOR 112
RED OHRR 87R DAKOTA VIC 74B OSF MAF
 RED OHRR 104M COPPER CASEY 87R

RED BUF CRK THE RIGHT KINDU199 OSF
 RED VGW 896-QUEEN 0939
 RED OHRR DAKOTA COPPER 29K OSF MAF
 RED OHRR 1098 MS CASEY 104M

RED SIX MILE VARSITY BLUES 14Z OSF MAF
RED SIX MILE MS TAFFETA 142B
 RED YY TAFFETA 306N OSF MAF

STEWART PANTHER 19X AMF OSF
 RED CROWFOOT SHAWNEE 9124J OSF MAF
 RED CROWFOOT RAMBLER 1038L
 RED YY TAFFETA 106L

BW	WW	Index	YW	Index	EPDs	BW	WW	YW	Milk	TM	REA	Marb
72	833	125	1315	99		-1.4	61	89	16	47	0.05	0.25

52

RED SIX MILE ELLINGTON 125E

SIXM 125E · 1995007 · March 07, 2017

RED C-BAR EVOLUTION 107Y AMF CAF NHF OSF
RED C-BAR-RJ GENESIS A31
 RED C-BAR ABIGRACE W91

RED TR COLT 45 UT806 OSF MAF
 RED LGS ABBY 689S OSF
 RED 5L NORSEMAN KING 2291 OSF MAF
 RED BROWN C-ABIGRACE S602 OSF

RED SIX MILE SMOKIN GUN 133Y CAF OSF MAF
RED SIX MILE MS CRESTA 110B
 RED VIKSE CRESTA 35U

RED SIX MILE WIND CHILL 828W OSF MAF
 RED SIX MILE GLORIA 746W OSF MAF
 RED SIX MILE SMOKIN JO 810S
 RED HOWE MS MAT 99P

BW	WW	Index	YW	Index	EPDs	BW	WW	YW	Milk	TM	REA	Marb
82	669	101	1203	107		-1.3	62	93	12	43	0	0.2



Lot 52

Lot 52

- shapely, solid skull shape, fresh genetics, calving ease without sacrificing growth
- 110B is an awesome uddered, youthful made, dark red young cow.
- **Calving Ease 4**



Granddam of Lot 52

High Caliber

SONS



High Caliber topped our 2016 bull sale selling to the progressive operations of Diamond T (the Gardners), Sunberry Valley (the VanCurens) and Vikse Family Farm. High Caliber enjoyed a successful show career in 2016 where he was admired for his impressive dimension and mass. He couples this with a flawless foot design and is backed by one of the true great dams in the Red Angus breed, Alana 13X. Watch for many more progeny from High Caliber in the coming year. The only sons we have on offer this year are out of our donor dam, Lassie. The combination is one of maternal merit, adequate performance, super calving ease and extra style.



Red U-6 Alana 13X
Dam of High Caliber



High Caliber, Mature



Sire of High Caliber
Red Six Mile Taurus 519A



Lot 53

53 RED SIX MILE HIGH CALIBER 367E

SIXM 367E · 2003471 · March 26, 2017

RED SIX MILE TAURUS 519A ^{CAF OSF MAF}
RED SIX MILE HIGH CALIBER 177C ^{OSF MAF}
RED U6 ALANA 13X ^{CAF OSF MAF DDF}

RED SIX MILE GAME FACE 164Y ^{AMF NHF OSF MAF}
RED SIX MILE SHAWNEE 116T ^{OSF MAF}
BLACK WHEEL ODYSSEY 117U
RED U6 ALANA 65T

RED TOWAW INDEED 104H ^{OSF}
RED SIX MILE LASSIE 377P ^{OSF}
RED SILVERVIEW LASSIE 307C

RED CC EXPANSION 5E
RED TOWAW MOLLY 67C
RED SIX MILE STARFIRE 499U
RED SIX MILE LASSIE 3A

BW	WW	Index	YW	Index	EPDS	BW	WW	YW	Milk	TM	REA	Marb
82	654	109	1166	130		-2.1	50	73	18	43	-0.1	0.51

- excellent foot, shapely, attractive skull
- The youngest of the flush mates but no slouch in quality. At least three Lassie 377P daughters retained in herd (238Y dam of Lot 66)
- *Calving Ease 4*



Lot 54



Dam of Lots 53-55

54

RED SIX MILE EXCALIBUR 23E

SIXM 23E · 2005244 · March 01, 2017

RED SIX MILE TAURUS 519A CAF OSF MAF
RED SIX MILE HIGH CALIBER 177C OSF MAF
 RED U6 ALANA 13X CAF OSF MAF DDF

RED TOWAW INDEED 104H OSF
RED SIX MILE LASSIE 377P OSF
 RED SILVERVIEW LASSIE 307C

RED SIX MILE GAME FACE 164Y AMF NHF OSF MAF
 RED SIX MILE SHAWNEE 116T OSF MAF
 BLACK WHEEL ODYSSEY 117U
 RED U6 ALANA 65T

RED CC EXPANSION 5E
 RED TOWAW MOLLY 67C
 RED SIX MILE STARFIRE 499U
 RED SIX MILE LASSIE 3A

BW	WW	Index	YW	Index	EPDs	BW	WW	YW	Milk	TM	REA	Marb
72	634	95	1189	113	-2.1	50	73	18	43	-0.1	0.51	

55

RED SIX MILE CALIBRATE 968E

SIXM 968E · 2005249 · February 26, 2017

RED SIX MILE TAURUS 519A CAF OSF MAF
RED SIX MILE HIGH CALIBER 177C OSF MAF
 RED U6 ALANA 13X CAF OSF MAF DDF

RED TOWAW INDEED 104H OSF
RED SIX MILE LASSIE 377P OSF
 RED SILVERVIEW LASSIE 307C

RED SIX MILE GAME FACE 164Y AMF NHF OSF MAF
 RED SIX MILE SHAWNEE 116T OSF MAF
 BLACK WHEEL ODYSSEY 117U
 RED U6 ALANA 65T

RED CC EXPANSION 5E
 RED TOWAW MOLLY 67C
 RED SIX MILE STARFIRE 499U
 RED SIX MILE LASSIE 3A

BW	WW	Index	YW	Index	EPDs	BW	WW	YW	Milk	TM	REA	Marb
76	690	104	1207	106	-2.1	50	73	18	43	-0.1	0.51	



Lot 55

Lot 55

- heavy muscled, exciting pedigree, sound footed, calving ease sire.
- 377P is a model Red Angus cow. With 35 registered progeny, she has proven her worth with sale topping offspring dating back to 2007.
- **Calving Ease 4**



Maternal Sister to Lots 53-55



Lot 26



Lot 2



Lot 38



Truly Blessed....
Callie and Tyson's
Wedding was a beautiful
celebration of Love,
Family and Friends.



Lot 38



Lot 9



Lot 30





Lot 101



Lot 115



Lot 99



Lot 1



Lot 1



Lot 4



Lot 52



Lot 56



Lot 56 pictured

56 **RED SIX MILE WILD WEST 938E**
 SIXM 938E • 2003663 • February 24, 2017

RED SIX MILE MASTERMIND 854M OSF MAF
RED SIX MILE WILD WEST 0913W OSF MAF
 RED JCC ELORA 455 OSF

RED TOWAW INDEED 104H OSF
 RED RSL MISS SELMA 384F OSF
 RED SIX MILE OUTBACK 219P
 RED JCC ELORA 203N OSF

RED MRLA NEW ERA 87Y OSF MAF
RED SIX MILE KURUBA 712A
 RED SIX MILE KURUBA 319X

MRLA 53W
 RED MRLA MISS 845S
 RED SSS BUCC 30U OSF MAF
 RED RUTHE KURUBA 028

BW	WW	Index	YW	Index	EPDs	BW	WW	YW	Milk	TM	REA	Marb
90	756	115	1425	134	1.5	68	113	23	55	0.01	0.34	

- dark red, heavy structured, expressive muscle pattern, growth oriented sale feature
- 712A is a dark red, elegant fronted, soggy middled cow with a good udder. She raised a \$12,000 son that sold in last year's bull sale to Tyrell Neidhardt of ND.
- **Calving Ease 1**
- **Dam's Average Wean Index: 111 (3 calves)**



Back View of Lot 56

57 **RED SIX MILE WILD WEST 898E**
 SIXM 898E • 2003659 • February 21, 2017

RED SIX MILE MASTERMIND 854M OSF MAF
RED SIX MILE WILD WEST 0913W OSF MAF
 RED JCC ELORA 455 OSF

RED TOWAW INDEED 104H OSF
 RED RSL MISS SELMA 384F OSF
 RED SIX MILE OUTBACK 219P
 RED JCC ELORA 203N OSF

RED SIX MILE UTAH 455U
RED SIX MILE SYRINGA 204X
 RED SIX MILE SYRINGA 537U

RED SIX MILE SAKIC 832S OSF MAF
 RED SIX MILE FAVORITE 890S OSF
 RED SIX MILE AVIATOR 217P OSF
 RED SIX MILE SYRINGA 110N

BW	WW	Index	YW	Index	EPDs	BW	WW	YW	Milk	TM	REA	Marb
74	661	101	1166	101	-2.9	49	66	19	45	-0.11	0.22	

- sleek design, correct structure, added hair
- 204X is a soggy middled Utah daughter who consistently throws low birthweight offspring (avg. 74lbs on 5 bull calves) and maintains a very respectable wean index.
- **Calving Ease 4**
- **Dam's Average Wean Index: 102 (5 calves)**



Sire of Lots 56, 57



Maternal brother to Lot 56



Lot 58



Paternal Sister to Lots 56-59

Lot 58

- smooth made, level design, impressive profile
- 104B is moderate in stature, sound structured and efficient type. She showcases a nice udder with near ideal teat size and placement
- **Calving Ease 2**

58 RED SIX MILE WILD WEST 364E

SIXM 364E · 2003649 · March 26, 2017

RED SIX MILE MASTERMIND 854M OSF MAF
RED SIX MILE WILD WEST 0913W OSF MAF
 RED JCC ELORA 45S OSF

BLACK BRYLOR KODIAK 204Y OSF
RED SIX MILE MISS SWEET 104B
 RED BRYLOR MISS SWEET 138Z

RED TOWAW INDEED 104H OSF
 RED RSL MISS SELMA 384F OSF
 RED SIX MILE OUTBACK 219P
 RED JCC ELORA 203N OSF

HF KODIAK 5R AMF CAF OHF NHF MAF DDF
 RED XXX LAKME 70M OSF MAF
 RED U-2 IDEAL 1600S
 RED DAY-LITE RAM TUFF 4T

BW	WW	Index	YW	Index	EPDs	BW	WW	YW	Milk	TM	REA	Marb
88	733	106	1422	130		1.3	63	106	19	49	-0.06	0.24

59 RED SIX MILE WILD WEST 907E

SIXM 907E · 2003658 · February 22, 2017

RED SIX MILE MASTERMIND 854M OSF MAF
RED SIX MILE WILD WEST 0913W OSF MAF
 RED JCC ELORA 45S OSF

RED SIX MILE RICOCHET 478R
RED SIX MILE ROXETTE 293T
 RED CTJ ROXETTE 9N

RED TOWAW INDEED 104H OSF
 RED RSL MISS SELMA 384F OSF
 RED SIX MILE OUTBACK 219P
 RED JCC ELORA 203N OSF

RED DIAMOND D PILGRIM 129L
 RED SIX MILE LIBRA 119N
 RED WILDMAN DENALI 19L OSF
 RED SIX MILE TRIXIE 618L

BW	WW	Index	YW	Index	EPDs	BW	WW	YW	Milk	TM	REA	Marb
82	609	91	1242	127		-1.1	43	77	23	46	-0.13	0.28



Lot 59

Lot 59

- extra hair, heavy structured, extended front end
- 293T is a massive bodied, big footed herd bull producer with bulls selling to Elford Ranch, Martin Morhart, Top Land and Cattle, and Jason Sanford
- **Calving Ease 2**
- **Dam's Average Wean Index: 98 (7 calves)**



Alternate view of Lot 59



On The Mark SONS

On the Mark was added to our bull battery to produce low birth weight cattle that maintained adequate performance. We really appreciate the dark color, correct build and attractive skull shape that he is putting into his progeny.

60

RED SIX MILE ELVIS 182E

SIXM 182E · 1995149 · March 11, 2017

RED ANDRAS NEW DIRECTION R240 AMF CAF NHF OSF DDF
RED PIE ON THE MARK 5424 OSF MAF
RED PIE POTEET 9158

ANDRAS IN FOCUS B152 OSF
RED ANDRAS KURUBA B111 NHF OSF
RED PIE GRIDMASTER 589 AMF OSF MAF
RED PIE POTEET 4049

RED BUF CRK HOBO 1961 OSF MAF
RED SIX MILE PRIDE 171C
RED SIX MILE PRIDE 102Y

RED BUF CRK HOBO 1413 OSF
BUF CR CARRIE VC1174 OSF
RED SIX MILE AVIATION 404U
RED SIX MILE PRIDE 902S

BW	WW	Index	YW	Index	EPDs	BW	WW	YW	Milk	TM	REA	Marb
77	732	113	1264	107		-1.2	59	90	15	45	0.08	0.29

- larger outlined, streamline design, fresh genetics
- 171C is a smooth made, good uddered female.
- *Calving Ease 4*
- *Dam's Average Wean Index: 101 (3 calves)*

61

RED SIX MILE ON THE MARK 32E

SIXM 32E · 1995037 · March 02, 2017

RED ANDRAS NEW DIRECTION R240 AMF CAF NHF OSF DDF
RED PIE ON THE MARK 5424 OSF MAF
RED PIE POTEET 9158

ANDRAS IN FOCUS B152 OSF
RED ANDRAS KURUBA B111 NHF OSF
RED PIE GRIDMASTER 589 AMF OSF MAF
RED PIE POTEET 4049

RED SIX MILE TUFF ENUF 111Z OSF MAF
RED SIX MILE BARBIE DOLL 329C
RED SIX MILE BARBIE 296Z

RED SIX MILE RAWHIDE 222X OSF MAF
RED BAR-E-L DIAMOND 111T
RED SIX MILE AVIATION 712S
RED ROSE HILL BARBIE 3T

BW	WW	Index	YW	Index	EPDs	BW	WW	YW	Milk	TM	REA	Marb
76	661	101	1136	95		-1.4	57	83	13	42	0.17	0.28

- dark red, shaggy, long bodied, balanced EPD profile
- 329C stems from the Barbie Doll cow family that did a nice job weaning this calf off with a 101 weaning index.
- *Calving Ease 4*



Lot 62

62

RED SIX MILE ON THE MARK 385E

TWIN · SIXM 385E · 1995015 · March 28, 2017

RED ANDRAS NEW DIRECTION R240 AMF CAF NHF OSF DDF
RED PIE ON THE MARK 5424 OSF MAF
RED PIE POTEET 9158

ANDRAS IN FOCUS B152 OSF
RED ANDRAS KURUBA B111 NHF OSF
RED PIE GRIDMASTER 589 AMF OSF MAF
RED PIE POTEET 4049

RED GEIS MISSION 272'11
RED BAR 4A ACROWN 22B
RED BAR 4A ACROWN

RED U2 MISSION 61W
GEIS JAY 27'02
RED ASPEN PERFECT TIMING 114S
RED ASPEN LOUISE 94E

BW	WW	Index	YW	Index	EPDs	BW	WW	YW	Milk	TM	REA	Marb
72	693	100	1322	100		-2.1	49	75	17	42	0.17	0.3

- better than his photo, sleek head and neck, stout and balanced
- 22B is a moderate framed young cow with a tidy, tightly suspended udder. One daughter retained in herd.
- *Calving Ease 4*
- *Dam's Average Wean Index: 104 (2 calves)*



Lot 63 pictured

63 RED SIX MILE ON THE MARK 847E
TWIN · SIXM 847E · 1999673 · February 13, 2017

RED ANDRAS NEW DIRECTION R240 AMF CAF NHF OSF DDF
RED PIE ON THE MARK 5424 OSF MAF
RED PIE POTEET 9158

ANDRAS IN FOCUS B152 OSF
RED ANDRAS KURUBA B111 NHF OSF
RED PIE GRIDMASTER 589 AMF OSF MAF
RED PIE POTEET 4049

RED MRLA NEW ERA 87Y OSF MAF
RED SIX MILE BELLE 426B
RED SIX MILE BELLE 458R

MRLA 53W
RED MRLA MISS 845S
RED STOCKMAN OF CUDLOBE 12L
RED JAS BELLE 3M

BW	WW	Index	YW	Index	EPDs	BW	WW	YW	Milk	TM	REA	Marb
60	648	100	1209	100	-1.7	56	89	19	47	0.2	0.38	

- robust rib and hip, big topped, smooth jointed
- 426B is a hard working angular made young cow who produced a high selling heifer that was selected by young Red Angus enthusiast Baxter Blair of Double B Cattle in the 2016 Genetic Focus Sale for \$10,500
- *Calving Ease 4*
- *Dam's Average Wean Index: 105 (2 calves)*



Grand Dam of Lot 63



Lot 64 pictured

64 **RED SIX MILE NIO EBERLE 920E**
SIXM 920E • 2005830 • February 22, 2017

RED VGW GAME PLAN 816 AMF NHF OSF MAF
RED SIX MILE GAME FACE 164Y AMF NHF OSF MAF
RED SIX MILE LAKOTO 35W OSF MAF

RED VGW GAME PLAN 508 AMF OSF MAF
RED VGW TW DOLL 0270
RED LAZY MC SMASH 41N OSF
RED STEWART LAKOTO 612S

RED L83 SUPER DUTY 244Z
RED SIX MILE MS LAKO 502C
RED SIX MILE LAKO 368X

RED SIX MILE KING RANCH 721W OSF
RED L83 BERTHA 077
RED SIX MILE SAKIC 832S OSF MAF
RED SIX MILE LAKO 727L

BW	WW	Index	YW	Index	EFPDs	BW	WW	YW	Milk	TM	REA	Marb
84	758	116	1357	120	-0.6	63	105	16	46	-0.04	0.3	

- loose hided, meat wagon, efficient type
- 502C was a Genetic Focus sale highlight in 2016 selling to Niobrara Red Angus in Nebraska. She is a beautifully constructed cow with extra rib and body.
- Owned with Niobrara Red Angus
- **Calving Ease 3**



Sire of Lots 64-65

65 **RED SIX MILE ERNESTO 955E**
SIXM 955E • 1994786 • February 25, 2017

RED VGW GAME PLAN 816 AMF NHF OSF MAF
RED SIX MILE GAME FACE 164Y AMF NHF OSF MAF
RED SIX MILE LAKOTO 35W OSF MAF

RED VGW GAME PLAN 508 AMF OSF MAF
RED VGW TW DOLL 0270
RED LAZY MC SMASH 41N OSF
RED STEWART LAKOTO 612S

RED SIX MILE WIND CHILL 828W OSF MAF
RED SIX MILE BAYBERRY 1Z
RED SIX MILE BAYBERRY 256T OSF

STEWART'S PRIMUS 52R
RED SVR FAYE 5M OSF MAF
RED TOWAW INDEED 104H OSF
RED SIX MILE BAYBERRY 120N

BW	WW	Index	YW	Index	EFPDs	BW	WW	YW	Milk	TM	REA	Marb
88	686	103	1243	111	2.1	59	83	8	37	-0.12	0.23	

- large outlined, good footed, level made
- 1Z is a large framed, tidy uddered Wind Chill daughter.
- **Calving Ease 1**
- **Dam's Average Wean Index: 102 (5 calves)**



Dam of Lot 64



Paternal sister of Lots 64-65



Lot 66

Lot 66

- sound structured, herd bull presence, stout
- 238Y moderate framed, eye appealing Lassie daughter with a perfect udder.
- **Calving Ease 2**
- **Dam's Average Wean Index: 101 (5 calves)**



Sire of Lot 66

66 RED SIX MILE ENTOURAGE 122E

SIXM 122E · 1994791 · March 07, 2017

RED SIX MILE TRAVELOCITY 318X OSF MAF
RED SIX MILE WARCRAFT 254Z OSF
 RED SIX MILE PRIDE 902S

RED SIX MILE SAKIC 832S OSF MAF
 RED SIX MILE DUCHESS 739S OSF
 RED TOWAW INDEED 104H OSF
 RED PTTV PRIDE 17'03

RED TER-RON RELOAD 703T AMF CAF NHF OSF MAF
RED LASSIE OF SIX MILE 238Y
 RED SIX MILE LASSIE 377P OSF

RED TER-RON FULLY LOADED 540R AMF OSF
 RED TER-RON SAMARIA 103N MAF
 RED TOWAW INDEED 104H OSF
 RED SILVERVIEW LASSIE 307C

BW	WW	Index	YW	Index	EPDs	BW	WW	YW	Milk	TM	REA	Marb
84	697	106	1257	112		0.8	53	77	14	40	-0.03	0.2

67 RED SIX MILE GRAND SLAM 481E

SIXM 481E · 2003644 · April 11, 2017

RED VGW GAME PLAN 816 AMF NHF OSF MAF
RED SIX MILE GRAND SLAM 130Z AMF NHF OSF MAF
 RED SIX MILE REBECCA 216X

RED VGW GAME PLAN 508 AMF OSF MAF
 RED VGW TW DOLL 0270
 RED SSS BUCC 30U OSF MAF
 RED WILBAR REBECCA 234M

RED SIX MILE TIMBERLINE 880W OSF MAF
RED SIX MILE SHAWNEE 974A
 RED SIX MILE SHAWNEE 209Y

RED SIX MILE TIMBERLAKE 180T AMF OSF
 RED SIX MILE FLOWER 713S
 RED SIX MILE WILD WEST 0913W OSF MAF
 RED CROWFOOT SHAWNEE 9124J OSF MAF

BW	WW	Index	YW	Index	EPDs	BW	WW	YW	Milk	TM	REA	Marb
84	786	115	1423	128		-0.1	67	103	22	56	0.05	0.28



Lot 67

Lot 67

- high performing, super stout, full of red meat, mid April birth date.
- 974A is product of our summer calving program. She offers a dark red color, heavy structure with near perfect teat size
- **Calving Ease 2**
- **Dam's Average Wean Index: 112 (3 calves)**



Sire of Lot 67



Lot 68

68

RED SIX MILE JAGGER 864E

SIXM 864E · 1995200 · February 16, 2017

RED VGW GAME PLAN 816 AMF NHF OSF MAF
RED SIX MILE & CO JAGGER 780A
 RED SIX MILE CHETA 702W OSF MAF

RED SIX MILE WIND CHILL 828W OSF MAF
RED L83 FAYETTE 130
 RED L83 MISS MULBERRY 924

RED VGW GAME PLAN 508 AMF OSF MAF
 RED VGW TW DOLL 0270
 RED SIX MILE SAKIC 832S OSF MAF
 RED SIX MILE CHETA 716S OSF MAF

STEWART'S PRIMUS 52R
 RED SVR FAYE 5M OSF MAF
 RED FINE LINE MULBERRY 26P AMF OSF MAF DDF
 RED L83 PRAIRIE LASS 214

BW	WW	Index	YW	Index	EPDs	BW	WW	YW	Milk	TM	REA	Marb
90	752	114	1273	104		0.8	71	105	16	51	-0.1	0.24

- power, muscle dimension, herd bull presence
- 130Y is a true herd bull maker. 4/4 of her calves have been marketed through our bull sale to Mike Campaugh, L83 Ranch, Bar V Ranch and Lazy J Ranch. She is a growth oriented cow who exhibits a beautiful front end and an excellent udder.
- **Calving Ease 1**
- **Dam's Average Wean Index: 104 (5 calves)**



Lot 69 and Sire

69

RED SIX MILE JAGGER 325E

SIXM 325E · 1995045 · March 23, 2017

RED VGW GAME PLAN 816 AMF NHF OSF MAF
RED SIX MILE & CO JAGGER 780A
 RED SIX MILE CHETA 702W OSF MAF

PEAK DOT ELIMINATOR 100Z
SIX MILE QUEEN 309C
 RED SIX MILE QUEEN 329P

RED VGW GAME PLAN 508 AMF OSF MAF
 RED VGW TW DOLL 0270
 RED SIX MILE SAKIC 832S OSF MAF
 RED SIX MILE CHETA 716S OSF MAF

S A V ELIMINATOR 910S AMF CAF NHF OSF
 ERICA OF PEAK DOT 730T
 RED TOWAW INDEED 104H OSF
 RED CUMNOCK QUEEN 752L

BW	WW	Index	YW	Index	EPDs	BW	WW	YW	Milk	TM	REA	Marb
90	726	109	1314	118		-0.8	59	86	24	53	-0.1	0.45

- expressive muscle, outcross pedigree, chunky made
- 309C is a black hided Eliminator daughter that did an excellent job raising this calf. She has ample milk production, a youthful look and bred back early.
- **Calving Ease 1**

70

RED SIX MILE RED WOLF 299E

SIXM 299E · 2003465 · March 21, 2017

RED VGW GAME PLAN 816 AMF NHF OSF MAF
RED SIX MILE & CO JAGGER 780A
 RED SIX MILE CHETA 702W OSF MAF

BLACK WHEEL ODYSSEY 117U
RED U6 ALANA 13X CAF OSF MAF DDF
 RED U6 ALANA 65T

RED VGW GAME PLAN 508 AMF OSF MAF
 RED VGW TW DOLL 0270
 RED SIX MILE SAKIC 832S OSF MAF
 RED SIX MILE CHETA 716S OSF MAF

BLACK WHEEL ODYSSEY 2M
 RED WHEEL BRIDGET 7P OSF
 RED U6 TWENTY X 29P
 RED U6 ALANA 12K

BW	WW	Index	YW	Index	EPDs	BW	WW	YW	Milk	TM	REA	Marb
82	693	103	1229	109		-1.3	57	82	24	52	-0.14	0.39

- smooth made, maternal pedigree, Calving Ease with grow
- 13X has three ET calves in this years sale. She injects extra shape and a dark red color into her offspring. Full siblings were features in last year's sale going to Blake Red Angus and Bar V Ranch
- **Calving Ease 3**

71

RED SIX MILE JAGGER 139E

SIXM 139E · 1995008 · March 08, 2017

RED VGW GAME PLAN 816 AMF NHF OSF MAF
RED SIX MILE & CO JAGGER 780A
 RED SIX MILE CHETA 702W OSF MAF

RED MRLA NEW ERA 87Y OSF MAF
RED SIX MILE SIERRA 190B
 RED SIX MILE SIERRA 257P OSF MAF

RED VGW GAME PLAN 508 AMF OSF MAF
 RED VGW TW DOLL 0270
 RED SIX MILE SAKIC 832S OSF MAF
 RED SIX MILE CHETA 716S OSF MAF

MRLA 53W
 RED MRLA MISS 845S
 RED SIX MILE CUJO 800M
 RED BOUNTY B MISS SIERRA BAR

BW	WW	Index	YW	Index	EPDs	BW	WW	YW	Milk	TM	REA	Marb
88	695	104	1293	120		-0.9	64	92	21	53	-0.17	0.33

- length of body, smooth shouldered, balanced EPD profile
- 190B is a large outlined, heavy structured young cow that stems from the "Siera" cow family.
- **Calving Ease 2**

72 RED SIX MILE RIGHT TURN 890E

SIXM 890E · 2014731 · February 20, 2017

RED BUF CRK THE RIGHT KINDU199 OSF
RED WPRA RIGHT TURN C521
RED WPRA ERICA A326

RED WHEEL ALLIANCE 22U AMF NHF OSF MAF
RED BAR-E-L FAITH 216C
RED BAR-E-L FAITH 19T

RED BUF CRK LANCER R017 OSF MAF
RED BUF CRK SHOSHONE R353 OSF
RED COCKBURN XCALIBAR 529X
RED WPRA ERICA 827

RED NORTHLINE ATLANTIC CITY
RED WHEEL AUBURN 2K
RED BAR-E-L APPROVAL 4L
RED BAR-E-L FAITH 12J

BW	WW	Index	YW	Index	EPDs	BW	WW	YW	Milk	TM	REA	Marb
76	744	115	1226	96		-1.5	52	77	19	42	-0.05	0.31

- rugged shape, dark red, fresh genetic package
- 216C is a gorgeous uddered Alliance daughter from the heart of the Bar EL herd.
- *Calving Ease 4*



Lot 72

73 RED SIX MILE RIGHTEOUS 941E

SIXM 941E · 2004769 · February 24, 2017

RED BUF CRK THE RIGHT KINDU199 OSF
RED WPRA RIGHT TURN C521
RED WPRA ERICA A326

RED U-2 JUSTIFIED 235Z
RED BAR-E-L LARKABA 217C
RED BAR-E-L LARKABA 77A

RED BUF CRK LANCER R017 OSF MAF
RED BUF CRK SHOSHONE R353 OSF
RED COCKBURN XCALIBAR 529X
RED WPRA ERICA 827

RED U-2 MAMA'S BOY 167X
RED U-2 DUCHESS 386X
RED BAR-E-L GAMBLER 87X
RED LPH LARKABA 12T

BW	WW	Index	YW	Index	EPDs	BW	WW	YW	Milk	TM	REA	Marb
92	724	109	1309	117		1.7	64	104	20	50	-0.01	0.24

- big topped, heavy muscled, better than his picture
- 217C came to us from the Bar EL herd purchase. She weaned this stud off with an impressive 109 wean index
- *Calving Ease 1*



Lot 73 and Sire

74 RED SIX MILE RIGHT TURN 884E

SIXM 884E · 2004767 · February 19, 2017

RED BUF CRK THE RIGHT KINDU199 OSF
RED WPRA RIGHT TURN C521
RED WPRA ERICA A326

RED DURALTA FORWARD MOTION 4A
RED BAR-E-L BESS 194C
RED LPH BESS 20S

RED BUF CRK LANCER R017 OSF MAF
RED BUF CRK SHOSHONE R353 OSF
RED COCKBURN XCALIBAR 529X
RED WPRA ERICA 827

RED SIX MILE FIFTH GEAR 275X
RED DURALTA 54T MS ARABIA 5W
RED TER-RON DIGGER 11L
RED BAR-E-L BESS 17L

BW	WW	Index	YW	Index	EPDs	BW	WW	YW	Milk	TM	REA	Marb
76	655	100	1209	111		-2.0	50	85	17	43	-0.15	0.41

- soft sided, deep ribbed, new Calving Ease option
- 194C is a stout made, perfect uddered young cow that we selected from the Bar EL herd. We expect big things from this cow in the future
- *Calving Ease 3*

75 RED SIX MILE JUSTIFIED 894E

TWIN · SIXM 894E · 1998627 · February 20, 2017

RED U-2 MAMA'S BOY 167X
RED U-2 JUSTIFIED 235Z
RED U-2 DUCHESS 386X

RED WHEEL ALLIANCE 22U AMF NHF OSF MAF
RED BAR-E-L AB MEG 18A
RED BBK MEG 856S

RED FLYING K AMBUSH 6T
RED FLYING K LAKOTA 104U
RED U-2 INXS 1665S
RED U-2 DUCHESS 2G

RED NORTHLINE ATLANTIC CITY
RED WHEEL AUBURN 2K
RED TER-RON BLITZ 611N
RED BAR-E-L MEG 85N

BW	WW	Index	YW	Index	EPDs	BW	WW	YW	Milk	TM	REA	Marb
68	669	100	1176	100		1.6	67	101	13	47	-0.09	0.03

- smooth made, deep bodied, born a twin
- 18A is an Alliance daughter from the Bar EL herd purchase.
- *Calving Ease 1*



Super Duty SONS

This will be the last year of Super Duty influence in our bull sale. He consistently injected low birth weight with high growth into his offspring.

76 RED SIX MILE SUPER DUTY 415E

SIXM 415E · 1995049 · April 01, 2017

RED SIX MILE KING RANCH 721W OSF
RED L83 SUPER DUTY 244Z
RED L83 BERTHA 077

RED 5L NORSEMAN KING 2291 OSF MAF
RED SIX MILE COUNTESS 198T OSF MAF
RED L83 ENTOURAGE OSF
RED MESSMER BERTHA 062P

RED SIX MILE RUGER 221X OSF MAF
RED SIX MILE PRIDE 614B
RED PTTV PRIDE 17'03

RED SIX MILE ULTIMATUM 409U OSF
RED SIX MILE SHAWNEE 116T OSF MAF
RED BRYLOR NEW TREND 22D OSF MAF
TRAILVIEW PRIDE 28'89

BW	WW	Index	YW	Index	EPDs	BW	WW	YW	Milk	TM	REA	Marb
82	793	117	1445	130		0.5	71	114	20	56	0.27	0.26

- great foot, heavy muscled, high performing
- 614B is a large outlined, tidy uddered Ruger daughter from the "Pride" family. Her first heifer calf sold through our 2016 Genetic Focus Sale to Chelsea Castonquay.
- **Calving Ease 2**
- **Dam's Average Wean Index: 114 (2 calves)**

77 RED SIX MILE SUPER DUTY 923E

SIXM 923E · 2003475 · February 22, 2017

RED SIX MILE KING RANCH 721W OSF
RED L83 SUPER DUTY 244Z
RED L83 BERTHA 077

RED 5L NORSEMAN KING 2291 OSF MAF
RED SIX MILE COUNTESS 198T OSF MAF
RED L83 ENTOURAGE OSF
RED MESSMER BERTHA 062P

RED VGW GAME PLAN 816 AMF NHF OSF MAF
RED SIX MILE SHADOW 310Z
RED SIX MILE SHADOW 776L

RED VGW GAME PLAN 508 AMF OSF MAF
RED VGW TW DOLL 0270
RED SIX MILE FIRE CHIEF 356F
RED DUMELIE SHADOW 490E

BW	WW	Index	YW	Index	EPDs	BW	WW	YW	Milk	TM	REA	Marb
86	654	98	1277	124		-1.2	59	97	17	46	0.02	0.56

- dark colored, smooth made, level hipped
- Dam is a level uddered, deep bodied daughter of Game Plan.
- Sons working for Sunny Ridge Farms and Breed Creek Angus
- **Calving Ease 3**
- **Dam's Average Wean Index: 94 (4 calves)**



78 RED SIX MILE SUPER DUTY 293E

SIXM 293E · 1995012 · March 21, 2017

RED SIX MILE KING RANCH 721W OSF
RED L83 SUPER DUTY 244Z
RED L83 BERTHA 077

RED 5L NORSEMAN KING 2291 OSF MAF
RED SIX MILE COUNTESS 198T OSF MAF
RED L83 ENTOURAGE OSF
RED MESSMER BERTHA 062P

RED WEBR TOMAHAWK 1204 OSF
RED SIX MILE MISS TROPHY 454B
RED SIX MILE MISS TROPHY 391Z

RED WEBR DOC HOLLIDAY 2N OSF
PFFR MS NYACK 237
RED SIX MILE WIND CHILL 828W OSF MAF
RED STEWART MISS TROPHY 718T

BW	WW	Index	YW	Index	EPDs	BW	WW	YW	Milk	TM	REA	Marb
86	782	120	1396	123		0.4	69	119	24	59	0.02	0.33

- extra dimension, shapely design, full of red meat
- 454B is a good footed, heavy milking Tomahawk daughter that puts extra punch in her calves. Last year's son sold to our good neighbors, Miles & Sherri Anderson.
- **Calving Ease 1**
- **Dam's Average Wean Index: 120 (2 calves)**

Lot 78



Lot 79

Lot 79

- dark coloured, smooth made, proven cow family
- 179Y continues to crank out highly marketable offspring. She is a tanky, sound footed momma that exhibits a clean and problem free udder. Her Reckoning daughter highlighted the Genetic Focus Sale in 2016 to Sunberry Valley Farm. 2 daughters retained in herd (812A dam of Lot 8)
- **Calving Ease 2**
- **Dam's Average Wean Index: 112 (4 calves)**



Maternal sister to Lot 79

79 RED SIX MILE SUPER DUTY 944E

SIXM 944E • 2005797 • February 24, 2017

RED SIX MILE KING RANCH 721W OSF
RED L83 SUPER DUTY 244Z
 RED L83 BERTHA 077

RED 5L NORSEMAN KING 2291 OSF MAF
 RED SIX MILE COUNTESS 198T OSF MAF
 RED L83 ENTOURAGE OSF
 RED MESSMER BERTHA 062P

RED 5L NORSEMAN KING 2291 OSF MAF
RED SIX MILE MISS DYNAMO 179Y
 RED SIX MILE MS DYNAMO 833W

RED VGW KING OF THE WEST OSF MAF
 RED NORSEMAN 1312 PJM
 RED CR RISER 95K
 RED SIX MILE MS. DYNAMO 579K

BW	WW	Index	YW	Index	EPDs	BW	WW	YW	Milk	TM	REA	Marb
86	761	116	1339	115		0	70	117	23	58	0.18	0.44

80 RED SIX MILE SUPER DUTY 349E

SIXM 349E • 1995218 • March 24, 2017

RED SIX MILE KING RANCH 721W OSF
RED L83 SUPER DUTY 244Z
 RED L83 BERTHA 077

RED 5L NORSEMAN KING 2291 OSF MAF
 RED SIX MILE COUNTESS 198T OSF MAF
 RED L83 ENTOURAGE OSF
 RED MESSMER BERTHA 062P

RED SSS TRAPPER 683X OSF MAF
RED SSS BARMAID 301Z
 RED SSS BARMAID 51R

RED FLYING K AMBUSH 121U OSF MAF
 RED SSS KURUBA 344S
 RED SSS STORM 87M
 SSS BARMAID 573F

BW	WW	Index	YW	Index	EPDs	BW	WW	YW	Milk	TM	REA	Marb
78	693	106	1272	116		-1.3	68	118	18	53	0.22	0.37



Lot 80

Lot 80

- eye appeal, true mass, top 1% WW, YW, CW
- 301Z is a large outlined, sound structured, dark red female that is earning her keep in the Six Mile herd. A son is working at Weber Land and Cattle in Minnesota and her Wild West daughter found a home at Kramer Angus in Illinois from the Genetic Focus 2017.
- **Calving Ease 3**
- **Dam's Average Wean Index: 101 (3 calves)**



Maternal sister to Lot 80



Lot 81



Sire of Lot 81



Lot 82



Sire of Lots 82-83

81

RED SIX MILE JONNY 401E

SIXM 401E · 2003648 · March 29, 2017

RED SR JONNY UNITAS 55Y OSF
RED POKE JONNY 3043 5314 OSF MAF
 RED HLH MS CONQUEST 1108 3043

RED TR COLT 45 UT806 OSF MAF
 RED 7U MISSION LOU 9927
 RED HXC CONQUEST 4405P OSF MAF
 RED HLH MS CHEYENNE 7304 1108

RED SIX MILE WILD WEST 0913W OSF MAF
RED SIX MILE OLIVIA 694C
 RED EKW OLIVIA II 24W

RED SIX MILE MASTERMIND 854M OSF MAF
 RED JCC ELORA 45S OSF
 RED TOWAW INDEED 104H OSF
 RED SIX LINE OLIVIA 213P

BW	WW	Index	YW	Index	EPDs	BW	WW	YW	Milk	TM	REA	Marb
76	661	96	1249	121		-1.1	61	93	20	50	0.06	0.31

- moderate, efficient type, soggy
- Sire was selected for Calving Ease, muscle shape and numerical value.
- 694C is a level uddered, heavy structured Wild West daughter from our summer calving program.
- **Calving Ease 3**

82

RED SIX MILE RUSTY 276E

SIXM 276E · 1995154 · March 20, 2017

RED C-T DKK DUKE 1100 AMF CAF NHF OSF MAF
RED RUST BULL 31B MAF
 RED BKT LARKEISA M288 CK AMF CAF NHF OSF MAF

RED FRITZ JUSTICE 8013 AMF OSF MAF
 RED GMRA ANGIE ROSE 944
 RED BECKTON COLT G552
 RED BKT LARKEISA D822 CB

RED SIX MILE RAWHIDE 222X OSF MAF
RED SIX MILE LAKOTA 439C
 RED SIX MILE LAKOTA 848A

RED LAZY MC SMASH 41N OSF
 RED YY TAFFETA 306N OSF MAF
 RED SIX MILE QUEST 117Y OSF MAF
 RED SIX MILE LAKOTA 113Y

BW	WW	Index	YW	Index	EPDs	BW	WW	YW	Milk	TM	REA	Marb
74	667	102	1222	111		-1.6	64	99	18	50	0.05	0.22

- double bred Calving Ease, shapely, proud fronted
- Sire selected for Calving Ease, maternal heritage and numerical value.
- 439C is moderate made, perfect uddered cow that goes back to the "Lakota" family.
- **Calving Ease 4**

83

RED SIX MILE RUSTY 356E

SIXM 356E · 1995156 · March 25, 2017

RED C-T DKK DUKE 1100 AMF CAF NHF OSF MAF
RED RUST BULL 31B MAF
 RED BKT LARKEISA M288 CK AMF CAF NHF OSF MAF

RED FRITZ JUSTICE 8013 AMF OSF MAF
 RED GMRA ANGIE ROSE 944
 RED BECKTON COLT G552
 RED BKT LARKEISA D822 CB

RED SIX MILE TIMBERLINE 880W OSF MAF
RED SIX MILE MS DURUBA 446C
 RED SIX MILE DURUBA 158Y

RED SIX MILE TIMBERLAKE 180T AMF OSF
 RED SIX MILE FLOWER 713S
 RED SIX MILE WIND CHILL 828W OSF MAF
 RED SIX MILE DURUBA 752S

BW	WW	Index	YW	Index	EPDs	BW	WW	YW	Milk	TM	REA	Marb
74	679	104	1173	99		-1.2	59	91	16	45	0	0.12

- double bred Calving Ease, moderate frame, heavy muscled
- 446C did a nice job on this calf weaning him with a 104 wean index
- **Calving Ease 4**

84

RED SIX MILE EASTWOOD 194E

SIXM 194E · 1995150 · March 11, 2017

RED SIX MILE VARSITY BLUES 14Z OSF MAF
RED L83 CLINT EASTWOOD 76C OSF MAF
RED L83 BERTHA 077

RED 6 MILE FULL THROTTLE 171T OSF
RED SIX MILE ALFRIDA 982A
RED SIX MILE ALFRIDA 433R

STEWART PANTHER 19X AMF OSF
RED CROWFOOT SHAWNEE 9124J OSF MAF
RED L83 ENTOURAGE OSF
RED MESSMER BERTHA 062P
RED TER-RON FULLY LOADED 540R AMF OSF
RED SIX MILE WITZEL 360J OSF
RED NORTHLINE ROB ROY 122K OSF MAF
RED SIX MILE ALFRIDA 81N

BW	WW	Index	YW	Index	EPDs	BW	WW	YW	Milk	TM	REA	Marb
84	669	101	1168	100		-0.6	64	98	17	49	-0.11	0.23

- level made, sound structure, hairy
- 982A comes from our summer calving program and demonstrated her fertility by moving into the winter calving group. She is big barreled, shaggy and super good. Perfect udder. One daughter retained in herd.
- *Calving Ease 3*
- *Dam's Average Wean Index: 104 (3 calves)*



Lot 84

85

RED SIX MILE EASTWOOD 427E

SIXM 427E · 2003647 · April 02, 2017

RED SIX MILE VARSITY BLUES 14Z OSF MAF
RED L83 CLINT EASTWOOD 76C OSF MAF
RED L83 BERTHA 077

RED SIX MILE SAKIC 832S OSF MAF
RED SIX MILE LASA LOU 225Y
RED SIX MILE LASA 661L

STEWART PANTHER 19X AMF OSF
RED CROWFOOT SHAWNEE 9124J OSF MAF
RED L83 ENTOURAGE OSF
RED MESSMER BERTHA 062P
RED SIX MILE AVIATOR 217P OSF
RED SIX MILE SIERA 257P OSF MAF
RED SIX MILE ICEBERG 757D
RED C Y LASA 316Z

BW	WW	Index	YW	Index	EPDs	BW	WW	YW	Milk	TM	REA	Marb
80	711	104	1227	107		-0.8	62	82	16	47	-0.07	0.06

- heavy structured, Calving Ease with growth, impressive EPD profile
- 225Y has two bulls in this years sale (Lot 99). She is a stout featured Sakic daughter. Son sold in 2017 bull sale to Les Jordet.
- *Calving Ease 3*
- *Dam's Average Wean Index: 102 (5 calves)*



Lot 85 and Sire

86

RED SIX MILE EASTWOOD 207E

SIXM 207E · 2003753 · March 12, 2017

RED SIX MILE VARSITY BLUES 14Z OSF MAF
RED L83 CLINT EASTWOOD 76C OSF MAF
RED L83 BERTHA 077

RED SIX MILE YAHTZEE 130Y
RED SIX MILE CHETA 425B
RED SIX MILE CHETA 466Z

STEWART PANTHER 19X AMF OSF
RED CROWFOOT SHAWNEE 9124J OSF MAF
RED L83 ENTOURAGE OSF
RED MESSMER BERTHA 062P
RED BCC CRIMSON JEWELS 102U
RED BROWNALTA BRIDGET 66W
RED SIX MILE RAWHIDE 222X OSF MAF
RED JCC CHETA 93M

BW	WW	Index	YW	Index	EPDs	BW	WW	YW	Milk	TM	REA	Marb
80	680	103	1258	115		-2.3	53	74	17	44	-0.02	0.22

- long spined, smooth, double bred Calving Ease
- 425B is a youthful, refined female with above average milk production.
- *Calving Ease 4*

87

RED SIX MILE REDMAN 919E

SIXM 919E · 2014732 · February 22, 2017

RED 5L NORSEMAN KING 2291 OSF MAF
RED RMJ REDMAN 1T OSF MAF
CROWFOOT KURUBA 4033P OSF

RED FLYING K CHEROKEE 61M
RED SIX MILE PATSY 256P OSF MAF
RED CIRCLE C PATSY 11L

RED VGW KING OF THE WEST OSF MAF
RED NORSEMAN 1312 PJM
O C C HUNTER 928H AMF NHF
RED CROWFOOT KURUBA 2030M

RED BFCK CHEROKEE CNYN 4912 OSF MAF
RED SCHR 42G DARLA 58J
RED LCHMN ON TARGET 1016E
RED CIRCLE C PATSY 15E

BW	WW	Index	YW	Index	EPDs	BW	WW	YW	Milk	TM	REA	Marb
60	567	86	1127	114		-2.4	52	89	18	43	0.27	0.27

- compact, big time Calving Ease, proven maternal lineage
- 256P was designated "Elite Dam" in 2010. Former donor female known for performance with moderate birth.
- *Calving Ease 4*
- *Dam's Average Wean Index: 109 (8 natural calves)*



Lot 88

88 RED SIX MILE ENCRYPTION 830E

SIXM 830E · 1998624 · February 09, 2017

RED U-2 RECKONING 149A AMF CAF NHF OSF MAF DDF
RED U-2 RENOWN 193C
 RED U-2 ENVIOUS 147X

RED BAR-E-L APPROVAL 4L
RED LPH BESS 175T
 RED LPH BESS 20P

RED U-2 RECON 192Y DMF AMF CAF NHF OSF MAF DDF
 RED U-2 ANEXA 271Y
 RED U-2 DYNAMO 7021T
 RED U-2 ENVIOUS 216M

RED TER-RON CARLTON 810H
 RED BAR-E-L CLASS 10J
 RED TER-RON CINCH 910L
 RED BAR-E-L BESS 17L

BW	WW	Index	YW	Index	EPDs	BW	WW	YW	Milk	TM	REA	Marb
84	692	104	1254	112		4.5	70	109	19	54	-0.04	0.35

- muscle dimension, herdsire look, powerfully constructed
- 175T is designated a "Premier Dam" since 2015. She is a high performing Approval daughter that we chose as a part of the Bar EL Red Angus herd dispersal.
- **Calving Ease 1**
- **Dam's Average Wean Index 106 (9 calves)**



Lot 89

89 RED SIX MILE ENVY 808E

SIXM 808E · 1998622 · January 31, 2017

XO CROWFOOT 0102X
RED CROWFOOT 4ACES 2193Z NHF OSF
 RED CROWFOOT MISS STRTCH

RED JENSEN CACTUS 16T
RED BAR-E-L BETDOLL 257W
 RED BAR-E-L BETDOLL 14L

RED CROWFOOT MOONSHINE 8081U AMF CAF NHF OSF MAF
 XO CROWFOOT BLACKBIRD 8810U
 RED SSS OLE 746P
 RED CROWFOOT LADY 3320N

RED JENSEN CACTUS CANYON 132R OSC
 RED THAT'LL DO ANNIE 6N
 RED YY RED KNIGHT 640F OSF
 RED RIBLONG BETDOLL 23E

BW	WW	Index	YW	Index	EPDs	BW	WW	YW	Milk	TM	REA	Marb
94	657	97	1232	115		0.3	55	79	18	46	0.22	0.24

- herd sire look, thick, big topped
- 257W is a designated "Elite Dam" since 2015. She is flawless in her make up.
- **Calving Ease 1**
- **Dam's Average Wean Index: 109 (6 calves)**



Lot 90

90 RED SIX MILE ELECTRIC AVE 985E

SIXM 985E · 1994788 · February 27, 2017

RED PZC TMAS FIRESTORM 1800 ET OSF
RED AHL FLASHBACK 446B
 RED AHL DUCHESS 42W

RED GLESBAR DIVIDEND 50M
RED GLESBAR SYRINGS 046S
 RED GLESBAR SYRINGA 10N

RED SIX MILE SAKIC 832S OSF MAF
 RED GT CITA 4060 AMF OSF
 RED PIE GET WESTERN 4061 AMF OSF
 RED AHL DUCHESS 106P OSF

RED RD DIVIDEND 7F
 GLESBAR BARB 102A
 RED YY RED KNIGHT 640F OSF
 RED GLESBAR SYRINGA 71D

BW	WW	Index	YW	Index	EPDs	BW	WW	YW	Milk	TM	REA	Marb
81	757	116	1371	123		-1.1	62	106	22	51	-0.15	0.25

- Rugged, rancher type, soggy
- 046S has 5 daughters retained in the Six Mile herd. She also produced a high selling bull to OHR Red Angus. She is still producing at 12 years of age.
- **Calving Ease 2-3**
- **Dam's Average Wean Index: 101 (10 calves)**

Extra Age Bulls



These bulls are all coming two year old virgin bulls. They represent the same breed leading, solid genetics as our yearling bulls with a bit more breeding capacity that comes with extra age. All of the Extra Age Bulls are managed in a totally different environment from our other bulls – therefore their performance data is not comparable to the rest.



Grand Dam to Lot 91



Dam to Lot 92

91 RED SIX MILE SUPER DUTY 721D

SIXM 721D · 1942533 · May 15, 2016

RED SIX MILE KING RANCH 721W OSF
RED L83 SUPER DUTY 244Z
 RED L83 BERTHA 077

RED 5L NORSEMAN KING 2291 OSF MAF
 RED SIX MILE COUNTESS 198T OSF MAF
 RED L83 ENTOURAGE OSF
 RED MESSMER BERTHA 062P

RED SIX MILE WIN-CHESTER 745W OSF
RED SIX MILE ANNIE B 174B
 RED SOO LINE ANNIE 9222 OSF MAF

RED TOWAW INDEED 104H OSF
 RED SIX MILE SHAWNEE 116T OSF MAF
 RED TER-RON TAHOE 141T
 RED SOO LINE ANNIE 7249

BW	WW	Index	YW	Index	EPDs	BW	WW	YW	Milk	TM	REA	Marb
84	743	110				0.7	72	115	20	56	0.15	0.32

- moderate, chunky, stout
- 174B offers a problem free udder and is super docile.
- *Calving Ease 2*

92 RED SIX MILE WILD WEST 708D

SIXM 708D · 1942528 · May 08, 2016

RED SIX MILE MASTERMIND 854M OSF MAF
RED SIX MILE WILD WEST 0913W OSF MAF
 RED JCC ELORA 455 OSF

RED TOWAW INDEED 104H OSF
 RED RSL MISS SELMA 384F OSF
 RED SIX MILE OUTBACK 219P
 RED JCC ELORA 203N OSF

RED RSL INNOVATOR 310P
RED SIX MILE GOLDIE 211T OSF
 RED PRIME TIME'S GOLDIE 1708

RED CROWFOOT INOVATOR 979J
 RED RSL TESSA RAE 514G
 RED CON AIR 55G
 RED SSS GOLDIE 708F

BW	WW	Index	YW	Index	EPDs	BW	WW	YW	Milk	TM	REA	Marb
80	709	105				0.3	49	73	19	44	-0.06	0.25

- stretchy, growth oriented, large outlined
- 211T was a deep bodied, powerfully constructed cow with a problem free udder.
- *Calving Ease 2*



Lot 93 pictured

93

RED SIX MILE TAURUS 609D

SIXM 609D · 1932751 · April 08, 2016

RED SIX MILE GAME FACE 164Y AMF NHF OSF MAF
RED SIX MILE TAURUS 519A CAF OSF MAF
 RED SIX MILE SHAWNEE 116T OSF MAF

RED VGW GAME PLAN 816 AMF NHF OSF MAF
 RED SIX MILE LAKOTO 35W OSF MAF
 RED 5L NORSEMAN KING 2291 OSF MAF
 RED CROWFOOT SHAWNEE 9124J OSF MAF

RED SIX MILE TIMBERLINE 880W OSF MAF
RED SIX MILE MADISON 980A
 RED SIX MILE MADISON 493Y

RED SIX MILE TIMBERLAKE 180T AMF OSF
 RED SIX MILE FLOWER 713S
 RED SOO LINE WILDCARD 7052
 RED S- MADISON 10M

BW	WW	Index	YW	Index	EPDs	BW	WW	YW	Milk	TM	REA	Marb
88	747	112	1243	109	0.2	68	103	16	49	0.08	0.31	

- striking profile, dark red, super sound
- 980A is a feminine, ultra complete Timberline daughter.
- *Calving Ease 3*
- *Dam's Average Wean Index: 105 (3 calves)*



Sire to Lot 93



Lot 94

Lot 94

- impeccable foot shape, exceptional quality, mirror image of Rawhide
- 606B is a good uddered, hard working Super Duty daughter that has moved into our winter calving program
- **Calving Ease 4**
- **Dam's Average Wean Index: 104 (2 calves)**

94

RED SIX MILE RAWHIDE 614D

SIXM 614D · 1943670 · April 09, 2016

RED LAZY MC SMASH 41N OSF
RED SIX MILE RAWHIDE 222X OSF MAF
 RED YY TAFFETA 306N OSF MAF

RED SSS BOOMER 803B
 RED LAURON YB ROSA 11G
 RED CROWFOOT RAMBLER 1038L
 RED YY TAFFETA 106L

RED L83 SUPER DUTY 244Z
RED SIX MILE DURUBA 606B
 RED SIX MILE DURUBA 840W

RED SIX MILE KING RANCH 721W OSF
 RED L83 BERTHA 077
 RED SIX MILE PARK AVE. 392P
 RED BOUNTY B DURUBA RAE 21F

BW	WW	Index	YW	Index	EPDs	BW	WW	YW	Milk	TM	REA	Marb
70	713	109	1116	88		-2.7	53	75	15	42	0.06	0.27

95

RED SIX MILE TAURUS 396D

SIXM 396D · 1932673 · March 17, 2016

RED SIX MILE GAME FACE 164Y AMF NHF OSF MAF
RED SIX MILE TAURUS 519A CAF OSF MAF
 RED SIX MILE SHAWNEE 116T OSF MAF

RED VGW GAME PLAN 816 AMF NHF OSF MAF
 RED SIX MILE LAKOTO 35W OSF MAF
 RED 5L NORSEMAN KING 2291 OSF MAF
 RED CROWFOOT SHAWNEE 9124J OSF MAF

RED SIX MILE TWISTER 470U
RED SIX MILE PRIDE 386Y
 RED SIX MILE PRIDE 835S

RED RSL INNOVATOR 310P
 RED SHODEREE HEATHER 72N
 RED SIX MILE AVIATOR 217P OSF
 RED PTTV PRIDE 3'97 OSF

BW	WW	Index	YW	Index	EPDs	BW	WW	YW	Milk	TM	REA	Marb
84	697	104	1089	86		-1.7	47	67	19	43	0.08	0.2



Lot 95

Lot 95

- soggy made, stout, perfect foot
- 386Y has two daughters retained in herd (676C dam of Lot 12). One son sold to Shayne Cristo in 2016.
- **Calving Ease 3**
- **Dam's Average Wean Index: 105 (4 calves)**



Brunson

SONS



Brunson Daughter

Brunson highlighted our 2015 bull sale selling to our neighbors and good friends at Triple Play Cattle Company (the Eklunds). We were able to use him in our summer calving program with excellent results. The fall of 2017 played out favorably for Brunson progeny; a daughter was crowned Reserve Champion Female at Edmonton and Agribition. Additionally, our high selling bred heifer in the Genetic Focus 2017 was a Brunson daughter who sold for \$31,000. His offspring excel in maternal worth, muscle shape and foot size and shape.



Brunson Daughter

96

RED SIX MILE BRUNSON 664D

SIXM 664D · 1938275 · May 1, 2016

RED MRLA NEW ERA 87Y ^{OSF}MAF
RED SIX MILE BRUNSON 357B
 RED SIX MILE MARTA 300Y

RED SHODEREE RAMBO 72D
RED DEVOLANE ASTER 5N
 RED DEVOLANE ASTER 35K

MRLA 53W
 RED MRLA MISS 845S
 RED SIX MILE WIND CHILL 828W ^{OSF}MAF
 RED BAR-E-L MARTA 39H
 RED GRL SIR RAMBO 9A
 RED MC PARENA 72T
 RED GLACIER LOGAN ^{OSF}MAF
 RED DEVOLANE ESTER 335H

BW	WW	Index	YW	Index	EPDs	BW	WW	YW	Milk	TM	REA	Marb
82	686	101				-0.4	54	78	10	35	-0.04	0.38

- Smooth shouldered, shapely design, good foot
- 05N is a sound footed, sharp fronted female that came to us through the Stewart Cattle Co. Dispersal.
- **Calving Ease 3**

97

RED SIX MILE BRUNSON 682D

SIXM 682D · 1942547 · May 03, 2016

RED MRLA NEW ERA 87Y ^{OSF}MAF
RED SIX MILE BRUNSON 357B
 RED SIX MILE MARTA 300Y

RED SIX MILE RAWHIDE 222X ^{OSF}MAF
RED SIX MILE LADY J 621B
 RED SIX MILE LADY J 25W

MRLA 53W
 RED MRLA MISS 845S
 RED SIX MILE WIND CHILL 828W ^{OSF}MAF
 RED BAR-E-L MARTA 39H
 RED LAZY MC SMASH 41N ^{OSF}
 RED YY TAFFETA 306N ^{OSF}MAF
 RED LEACHMAN END CUT 1383G ^{OSF}
 RED STEWART LADY J 79R

BW	WW	Index	YW	Index	EPDs	BW	WW	YW	Milk	TM	REA	Marb
88	719	100				1.2	58	89	17	44	0.03	0.26

- sound foot, athletic build, expressive shape
- This cow family was a mainstay at Stewart Cattle Company prior to their dispersal.
- **Calving Ease 2**

98

RED SIX MILE BRUNSON 720D

SIXM 720D · 1942531 · May 14, 2016

RED MRLA NEW ERA 87Y ^{OSF}MAF
RED SIX MILE BRUNSON 357B
 RED SIX MILE MARTA 300Y

RED PEAK DOT PREDOMINANT 77U ^{AMF/NH/OSF}MAF/DDF
RED SIX MILE LANA 292X
 RED SIX MILE LANA 410U

MRLA 53W
 RED MRLA MISS 845S
 RED SIX MILE WIND CHILL 828W ^{OSF}MAF
 RED BAR-E-L MARTA 39H
 PEAK DOT PREDOMINANT 135S
 SUSIE OF PEAK DOT 557N CAF
 RED SIX MILE AVIATOR 217P ^{OSF}
 RED SIX MILE LANA 794S

BW	WW	Index	YW	Index	EPDs	BW	WW	YW	Milk	TM	REA	Marb
90	740	108				0.6	53	80	12	38	0.01	0.39

- level made, outcross pedigree, proud fronted
- 292X is a tanky Predominant daughter with adequate milk production. Sons sold to Colt Kornfeld and Stan McCrea.
- **Calving Ease 1**



Lot 99

Lot 99

- soggy made, moves like a cat, exceptional quality
- 225Y has two bulls in this years sale (Lot 85). She is a stout featured Sakic daughter. Son sold in 2017 bull sale to Les Jordet.
- **Calving Ease 2**
- **Dam's Average Wean Index: 102 (5 calves)**



Maternal Grand sire of Lot 99

99

RED SIX MILE BRUNSON 687D

SIXM 687D · 1942527 · May 04, 2016

RED MRLA NEW ERA 87Y OSF MAF
RED SIX MILE BRUNSON 357B
 RED SIX MILE MARTA 300Y

RED SIX MILE SAKIC 832S OSF MAF
RED SIX MILE LASA LOU 225Y
 RED SIX MILE LASA 661L

MRLA 53W
 RED MRLA MISS 845S
 RED SIX MILE WIND CHILL 828W OSF MAF
 RED BAR-E-L MARTA 39H
 RED SIX MILE AVIATOR 217P OSF
 RED SIX MILE SIERA 257P OSF MAF
 RED SIX MILE ICEBERG 757D
 RED C Y LASA 316Z

BW	WW	Index	YW	Index	EPDs	BW	WW	YW	Milk	TM	REA	Marb
86	703	103				0	53	73	19	45	-0.07	0.15

100

RED SIX MILE BRUNSON 712D

SIXM 712D · 1942529 · May 08, 2016

RED MRLA NEW ERA 87Y OSF MAF
RED SIX MILE BRUNSON 357B
 RED SIX MILE MARTA 300Y

RED TER-RON CARLTON 810H
RED YY INA 348N
 RED THREE D INA 19'90

MRLA 53W
 RED MRLA MISS 845S
 RED SIX MILE WIND CHILL 828W OSF MAF
 RED BAR-E-L MARTA 39H
 RED SSS BOOM TOWN 260D
 RED BRA HAWAMBA 10B
 RED THREE D ATLAS 2'88
 THREE D INA 19'88

BW	WW	Index	YW	Index	EPDs	BW	WW	YW	Milk	TM	REA	Marb
80	649	95				-0.5	45	63	17	40	0.04	0.22



Lot 100

Lot 100

- moderate, shapely, balanced
- 348N was a moderate, hard working momma cow who possessed a good square udder.
- **Calving Ease 3**



Back View of Lot 100



Lot 101 pictured

101

SIX MILE CACHE CREEK 804E

SIXM 804E · 2005247 · January 28, 2017

BARSTOW CASH DDF
KR CASH 4003
 SUMMITCREST ELBA 1W01

DAMERON FIRST IMPRESSION DDF
OSU EMPRESS 3100
 OSU EMPRESS 0135

SITZ DASH 10277 AMF CAF OHF NHF DDF
 BARSTOW QUEEN W16 OHF DDF
 S/C CONSTELLATION 06S6 OHF
 SUMMITCREST ELBA 1M17

S A V BRILLIANCE 8077 AMF CAF OHF NHF OSF DDF
 DAMERON NORTHERN MISS 3114 AMF DDF
 EXAR SPARTAN 6225 AMF CAF OHF NHF DDF
 OSU EMPRESS 7165

BW	WW	Index	YW	Index	EPDs	BW	WW	YW	Milk	TM	REA	Marb
80	708	103	1289	109		0.7	53	92	30	56	0.72	0.21

- a definite sale feature, calving ease with growth, extra punch
- Empress 3100 is a gorgeous uddered First Impression daughter that produces high quality, highly marketable offspring. She produced our high selling black bull in 2016 to Tannas Ranches.
- **Retaining 1/3 Semen Interest**
- **Calving Ease 3**



Sire of Lots 101, 102

102

SIX MILE KASH 164E

SIXM 164E · 2014730 · March 09, 2017

BARSTOW CASH DDF
KR CASH 4003
 SUMMITCREST ELBA 1W01

DAMERON FIRST IMPRESSION DDF
OSU EMPRESS 3100
 OSU EMPRESS 0135

SITZ DASH 10277 AMF CAF OHF NHF DDF
 BARSTOW QUEEN W16 OHF DDF
 S/C CONSTELLATION 06S6 OHF
 SUMMITCREST ELBA 1M17

S A V BRILLIANCE 8077 AMF CAF OHF NHF OSF DDF
 DAMERON NORTHERN MISS 3114 AMF DDF
 EXAR SPARTAN 6225 AMF CAF OHF NHF DDF
 OSU EMPRESS 7165

BW	WW	Index	YW	Index	EPDs	BW	WW	YW	Milk	TM	REA	Marb
86	628	89	1144	97		0.7	53	92	30	56	0.72	0.21

- moderate, smooth design, exceptional EPD profile
- Flush mate to Lot 101.
- **Calving Ease 3**



Dam of Lots 101, 102



Lot 103 pictured

103 PREMIER HASSON NORRIS 716
 PLS 716E · 1992165 · January 15, 2017

O C C LEGEND 616L AMF CAF OHF NHF OSF DDF
B C LOOKOUT 7024 AMF CAF OHF NHF DDF
 GIBBET HILL MIGNONNE E37

O C C EMBLAZON 854E DMF AMF CAF OHF NHF OSF DDF
 O C C BLACKBIRD 632J
 PAPA EQUATOR 2928 AMF NHF
 GIBBET HILL MIGNONNE TR 29

DAMERON FIRST IMPRESSION DDF
OSU EMPRESS 3100
 OSU EMPRESS 0135

S A V BRILLIANCE 8077 AMF CAF OHF NHF OSF DDF
 DAMERON NORTHERN MISS 3114 AMF DDF
 EXAR SPARTAN 6225 AMF CAF OHF NHF DDF
 OSU EMPRESS 7165

BW	WW	Index	YW	Index	EPDs	BW	WW	YW	Milk	TM	REA	Marb
82	780		1390		1.7	49	83	26	51	0.58	0.25	

- long spined, excellent foot, exciting pedigree, docile temperament.
- Empress 3100 was the 2-time Supreme Female at the Toronto Royal. We love the extension and problem free feet she throws to her calves. A full sibling heifer calf topped the 2017 Royal Elite sale for Premier Livestock at \$19,000 and went on to be named the Reserve Grand Champion Female at the Toronto Royal Winter Fair.
- *Calving Ease 2-3*

104 SIX MILE PREMIER HASSON CONVERSATION 723E
 SIXM 723E · regno · February 19, 2017

SILVEIRAS CONVERSION 8064
SAC CONVERSATION
 LAFLINS FARRAH 0252

DAMERON FIRST IMPRESSION DDF
OSU EMPRESS 3100
 OSU EMPRESS 0135

BT CROSSOVER 758N
 EXG SARAS DREAM S609 R3
 S A V 004 PREDOMINANT 4438
 LAFLINS FARRAH 7215

S A V BRILLIANCE 8077 AMF CAF OHF NHF OSF DDF
 DAMERON NORTHERN MISS 3114 AMF DDF
 EXAR SPARTAN 6225 AMF CAF OHF NHF DDF
 OSU EMPRESS 7165

BW	WW	Index	YW	Index	EPDs	BW	WW	YW	Milk	TM	REA	Marb
78	742		1343		1.3	46	84	33	56	0.76	0.38	

- extended front, shapely design, fresh genetic package
- The Conversation sire is a hot commodity right now with exceptional demand. Empress is the kind of cow that adds length of body, bone and mass without adding a bunch of birth weight. Unique combination.
- *Calving Ease 2-3*



Bill Conley
 Sire of Lot 103



Full Sister to Lot 103



Sire of Lot 104



Breakout was the RBC Supreme Champion Bull in 2015 for the Belshams at Poplar Meadows Angus. We partnered with Hamilton Farms to purchase a piece of Breakout. We were blown away by the performance and dimension that he stamped his calves with. Look for Breakout sons to add frame, pounds and hair to their calf crops without sacrificing structural soundness.

Breakout
SONS

105 SIX MILE EDGE OF GLORY 885E

SIXM 885E • 2005800 • February 19, 2017

AVF BREAKOUT 5409
MAY-WAY BREAKOUT 1310
MAY-WAY LADY BANDO 086

SOO LINE MOTIVE 9016
SIX MILE ANNIE K 114B
SIX MILE ANNIE K 917W

S A V BISMARCK 5682 AMF CAF OHF NHF DDF
AVF SARA 0045
MAY-WAY 112 819
MAY-WAY LADY BANDO 745
HF KODIAK 5R AMF CAF OHF NHF MAF DDF
TLA BEAUTY 5R
S A V FINAL ANSWER 0035 AMF CAF OHF NHF DDF
SIX MILE ANNIE K 725T

BW	WW	Index	YW	Index	EPDs	BW	WW	YW	Milk	TM	REA	Marb
80	668	99	1155	104		1.3	53	95	27	54	0.42	0.36

- striking profile, smooth design, impressive BW to YW spread
- 114B is a moderate, feminine Motive daughter that stems from our "Annie" cow family with a beautiful udder. She is owned in partnership with Luc Smith - Breed Creek Ranch.
- **Calving Ease 3**



Maternal Grand sire of Lot 105

106 SIX MILE EMINEM 870E

SIXM 870E • 1994784 • February 17, 2017

AVF BREAKOUT 5409
MAY-WAY BREAKOUT 1310
MAY-WAY LADY BANDO 086

PSF FREEDOM 12S
SIX MILE BLACKBIRD 864U
ROSE HILL BLACKBIRD 4N

S A V BISMARCK 5682 AMF CAF OHF NHF DDF
AVF SARA 0045
MAY-WAY 112 819
MAY-WAY LADY BANDO 745
TC FREEDOM 104 AMF CAF OHF NHF DDF
ROSE HILL LADY DI 11F
ROSE HILL ROYCE 4L
PSF BLACKBIRD 18K

BW	WW	Index	YW	Index	EPDs	BW	WW	YW	Milk	TM	REA	Marb
88	708	104	1276	121		3.6	53	100	28	55	0.31	0.33

- big hipped, deep ribbed, maternal pedigree
- 864U continues to quietly make her mark on our black bull pen year after year. Sons have sold to Spruce Meadow Farms, Danny Blake, HBH Farms and Anderson Ranch. She still has a perfect udder at 10 years of age and weaned this calf off at a 104 index. Daughter retained in herd (16X dam of Lot 118 & 119)
- **Calving Ease 1**
- **Dam's Average Wean Index: 101 (8 calves)**



Dam of Lot 106



Lot 107 pictured

107

SIX MILE BREAKAWAY 146E

SIXM 146E · 2003745 · March 08, 2017

AVF BREAKOUT 5409
MAY-WAY BREAKOUT 1310
 MAY-WAY LADY BANDO 086

DAMERON FIRST IMPRESSION DDF
OSU EMPRESS 3100
 OSU EMPRESS 0135

S A V BISMARCK 5682 AMF CAF OHF NHF DDF
 AVF SARA 0045
 MAY-WAY 112 819
 MAY-WAY LADY BANDO 745

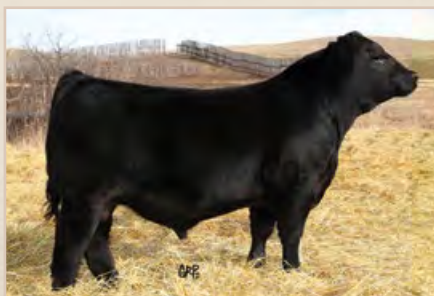
S A V BRILLIANCE 8077 AMF CAF OHF NHF OSF DDF
 DAMERON NORTHERN MISS 3114 AMF DDF
 EXAR SPARTAN 6225 AMF CAF OHF NHF DDF
 OSU EMPRESS 7165

- soggy ribbed, attractive profile, sound at the ground, sale feature
- With 19 registered progeny to date, Empress demonstrates her genetic worth. Empress was added to our herd for her ability to keep birth weights in check while adding power and presence. She seems to mate well with all sires.
- **Calving Ease 1**

BW	WW	Index	YW	Index	EP DS	BW	WW	YW	Milk	TM	REA	Marb
97	749	107	1291	102		2.9	58	104	34	62	0.58	0.36



Dam of Lot 107



Brother to Lot 107



Sire of Lot 107



Lot 108

108

SIX MILE BREAKOUT 239E

SIXM 239E · 2003464 · March 15, 2017

AVF BREAKOUT 5409
MAY-WAY BREAKOUT 1310
 MAY-WAY LADY BANDO 086

SANDY BAR DIRECT 15U
BREED CREEK SUSIE 2042
 BREED CREEK SUSIE 864

S A V BISMARCK 5682 AMF CAF OHF NHF DDF
 AVF SARA 0045
 MAY-WAY 112 819
 MAY-WAY LADY BANDO 745
 ARDA DIRECT 381S
 SANDY BAR LADY 178P
 GEIS NEW TREND 18'04
 SUSIE OF PEAK DOT 224M

BW	WW	Index	YW	Index	EPDs	BW	WW	YW	Milk	TM	REA	Marb
94	755	111	1322	121		4.3	62	108	24	55		

- level made, shaggy, large outlined
- 042Z is a feminine featured female with a great udder. Her first daughter sold as a feature through the 2015 Genetic Focus sale to Garrett Ulrich.
- **Calving Ease 1**
- **Dam's Average Wean Index: 96 (4 calves)**



Lot 109

109

SIX MILE BREAKOUT 332E

SIXM 332E · 1995013 · March 24, 2017

AVF BREAKOUT 5409
MAY-WAY BREAKOUT 1310
 MAY-WAY LADY BANDO 086

SANKEYS JUSTIFIED 101
SIX MILE LASSIE 260B
 SIX MILE LASSIE 373Y

S A V BISMARCK 5682 AMF CAF OHF NHF DDF
 AVF SARA 0045
 MAY-WAY 112 819
 MAY-WAY LADY BANDO 745
 SANKEYS LAZER 609 OF 6N DMF AMF
 SANKEYS ERICA 525
 S A V PREFERENCE 9184 CAF
 LASSIE OF PEAK DOT 703T

BW	WW	Index	YW	Index	EPDs	BW	WW	YW	Milk	TM	REA	Marb
84	789	118	1300	109		3.2	69	121	30	65		

- sound structure, explosive growth curve, attractive profile
- 260B is the type of female we strive to produce in our Angus herd. Hard working, problem free udder and excellent foot. Last year's Crossfire son was selected by Dustin Grant of Dot Bar Dot Ranch to work in his heifer pen.
- **Calving Ease 2**
- **Dam's Average Wean Index: 118 (2 calves)**



Thank You Matt Criddle

For your dedication to Six Mile over the past two years. We miss you already and wish you, Bailey and Shelby all the best in your new endeavours!

110

SIX MILE BREAKOUT 987E

SIXM 987E · 1995204 · February 27, 2017

AVF BREAKOUT 5409
MAY-WAY BREAKOUT 1310
 MAY-WAY LADY BANDO 086

CONNELY IMPRESSION AMF CAF OHF NHF DDF
SIX MILE BLACKBIRD 46Z
 SIX MILE BLACKBIRD 926W

S A V BISMARCK 5682 AMF CAF OHF NHF DDF
 AVF SARA 0045
 MAY-WAY 112 819
 MAY-WAY LADY BANDO 745
 CONNEALY REFLECTION AMF CAF OHF NHF DDF
 PEARL PAMMY OF CONANGA 194 CAF DDF
 STONEHAVEN 32R CHARTER 111T
 ROSE HILL BLACKBIRD 4N

BW	WW	Index	YW	Index	EPDs	BW	WW	YW	Milk	TM	REA	Marb
92	711	104	1234	112		4	62	112	26	57		

- large outlined, high performing, big footed
- 46Z stems from the "Blackbird" cow family that is prevalent in this years Black Angus offering. She has produced sons selling to Darwin Menke, Kyle Blake, and Kornfeld Ranch.
- **Calving Ease 1**
- **Dam's Average Wean Index: 99 (4 calves)**

111 SIX MILE EIGHT SECONDS 806E

SIXM 806E · 1995136 · January 29, 2017

AVF BREAKOUT 5409
MAY-WAY BREAKOUT 1310
 MAY-WAY LADY BANDO 086

S A V BISMARCK 5682 AMF CAF OHF NHF DDF
 AVF SARA 0045
 MAY-WAY 112 819
 MAY-WAY LADY BANDO 745

CONNEALY COMPLETE 8454 AMF CAF NHF
SIX MILE LADY OF SIX 735A
 LADY OF PEAK DOT 4595

SUMMITCREST COMPLETE 1P55 AMF CAF OHF NHF DDF
 BLACK BEARA OF CONANGA 8454 DDF
 BASIN PRIME CUT 354K
 LADY OF PEAK DOT 355J

BW	WW	Index	YW	Index	EPDs	BW	WW	YW	Milk	TM	REA	Marb
90	697	102	1282	125		3.6	60	105	29	59	0.48	0.39

- larger framed, heavy muscled, big topped
- 735A is better known as “Lady” around Six Mile. She was Coy and Eric Smith’s show heifer for a number of years. She is the highest quality Complete daughter on the ranch with a flawless udder. Her first son sold to W Sunrise Angus in 2016 and she has one daughter “the Tramp” retained in our herd.

- **Calving Ease 1**
- **Dam’s Average Wean Index: 108 (3 calves)**



Lot 110 and Dam

112 SIX MILE BREAKOUT 215E

SIXM 215E · 1995214 · March 13, 2017

AVF BREAKOUT 5409
MAY-WAY BREAKOUT 1310
 MAY-WAY LADY BANDO 086

S A V BISMARCK 5682 AMF CAF OHF NHF DDF
 AVF SARA 0045
 MAY-WAY 112 819
 MAY-WAY LADY BANDO 745

S A V PREFERENCE 9184 CAF
SIX MILE HEROINE 358Y
 ISLA BANK HEROINE 36’00

S A V PROVIDENCE 6922 AMF CAF OHF NHF DDF
 S A V BESSIE HEIRESS 4149 CAF
 BIG BEAR WALKER 37E
 ISLA BANK HEROINE 41F

BW	WW	Index	YW	Index	EPDs	BW	WW	YW	Milk	TM	REA	Marb
93	767	113	1404	129		4.7	59	108	29	59	0.33	0.35

- power bull, wide based, big footed
- 358Y is a designated “Elite Dam” since 2017. She consistently brings home scale thumping offspring.

- **Calving Ease 1**
- **Dam’s Average Wean Index: 108 (5 calves)**



Lot 112

113 SIX MILE CROSSFIRE 51E

SIXM 51E · 1991789 · March 02, 2017

S TITLEST 1145 AMF CAF NHF OSF DDF
BAR-H CROSSFIRE 63A
 HF TIBBIE 93U

RA LINCOLN W144 AMF NHF DDF
 S CORA 572 DDF
 S A V 004 PREDOMINANT 4438 AMF CAF OHF NHF DDF
 HF TIBBIE 35K

S A V PREFERENCE 9184 CAF
SIX MILE HENRIETTE 281Z
 HENRIETTE OF PEAK DOT 468N

S A V PROVIDENCE 6922 AMF CAF OHF NHF DDF
 S A V BESSIE HEIRESS 4149 CAF
 DOUBLE AA BARDOLENE 8’98
 DOUBLE AA HENRIETTA 52’97

BW	WW	Index	YW	Index	EPDs	BW	WW	YW	Milk	TM	REA	Marb
82	753	113	1216	99		1.2	57	94	25	54	0.19	0.25

- calving ease with growth, rancher type, impeccable foot shape
- 281Z is a designated “Elite Dam” since 2018. She offers a tight and tidy udder and is super flexible on the move.

- **Calving Ease 3**
- **Dam’s Average Wean Index: 110 (4 calves)**



Thank You Grant & Lauralee

For being our good friends and official cattle photographers for the last 14 years!



Lot 114

Lot 114

- soggy ribbed, long spined, extended front end
- 137Z is a refined, high quality Preference daughter with near perfect teat size and placement.
- *Calving Ease 2*



Sire of Lots 114, 115

114

SIX MILE KOZI 70E

SIXM 70E · 1995207 · March 04, 2017

KOUPAL KOZI 22 DDF
KOUPAL KOZI 418 DMF DWF AMF CAF OHF NHF OSF DDF
 KOUPAL EBONETTE 263

BCAR HEAVY DUTY 096
SIX MILE JUNE 137Z
 JUNE OF PEAK DOT 421S

O C C UNMISTAKABULL 896U
 KOUPAL ELBA 0187
 KOUPAL BRULEE 698 AMF NHF
 KOUPALS EBONETTE 545 CAF

K M RIGHT TIME 7302
 BREED CREEK COUNTESS 228
 HF POWER-UP 72N
 JUNE OF PEAK DOT 853L

BW	WW	Index	YW	Index	EPDs	BW	WW	YW	Milk	TM	REA	Marb
90	661	96	1322	130		3.1	62	103	20	51	0.39	0.3

115

SIX MILE EASY E 202E

SIXM 202E · 1994796 · March 12, 2017

KOUPAL KOZI 22 DDF
KOUPAL KOZI 418 DMF DWF AMF CAF OHF NHF OSF DDF
 KOUPAL EBONETTE 263

S A V PREFERENCE 9184 CAF
SIX MILE MAID MARION 264Z
 J P D MAID MARION 17N

O C C UNMISTAKABULL 896U
 KOUPAL ELBA 0187
 KOUPAL BRULEE 698 AMF NHF
 KOUPALS EBONETTE 545 CAF

S A V PROVIDENCE 6922 AMF CAF OHF NHF DDF
 S A V BESSIE HEIRESS 4149 CAF
 GLEN ISLAY BONDSMAN 12J
 ALLENCROFT MISS MARION 03 113H

BW	WW	Index	YW	Index	EPDs	BW	WW	YW	Milk	TM	REA	Marb
86	809	122	1404	127		2.8	70	112	32	67	0.43	0.32



Lot 115

Lot 115

- high quality, explosive growth, sound as a cat
- 264Z is a highly maternal individual that pours the coal to her offspring every year. She exhibits a nice udder, bold rib cage and extra hair. One daughter retained in herd and last year's bull found a home at Kornfeld's of Val Marie, SK.
- *Calving Ease 2*
- *Dam's Average Wean Index: 117 (4 calves)*



Maternal Grandsire of Lot 115



Lot 116 pictured

116

SIX MILE INSIGHT 84E

SIXM 84E · 2003769 · March 04, 2017

S A V BRILLIANCE 8077 AMF CAF OHF NHF OSF DDF
PVF INSIGHT 0129 AMF CAF NHF DDF
 PVF MISSIE 790 DDF

S A V BISMARCK 5682 AMF CAF OHF NHF DDF
 S A V BLACKCAP MAY 5270 CAC
 P V F NEW HORIZON 001 AMF NHF DDC
 P V F MISS RAPTOR 024

S A V FIRST CLASS 0207 AMF CAF OHF NHF DDF
PFLC BARDETTA 4A
 LEGEND LANE BARDETTA 824U

S A V NET WORTH 4200 AMF CAF OHF NHF DDF
 S A V DUKE GIRL 7348 CAF
 LEGEND LANE REVOLUTION 505 NHF
 PRIME TIME'S 31H BARDETTA 549

BW	WW	Index	YW	Index	EPDs	BW	WW	YW	Milk	TM	REA	Marb
88	715	103	1252	101	2.6	54	92	27	54	0.85	0.11	

- intriguing look, heavy structured, fresh genetic package
- Bardetta 4A exhibits a perfect udder design with above average milk production. The Bardetta cow family is a no nonsense type with progeny in high demand. Full sister to 84E was a Genetic Focus 2017 sale feature selling to Hall Stock Farm of North Dakota.
- *Calving Ease 2*

117

SIX MILE KOZI 900E

SIXM 900E · 1995177 · February 21, 2017

KOUPAL KOZI 22 DDF
KOUPAL KOZI 418 DMF DMF AMF CAF OHF NHF OSF DDF
 KOUPAL EBONETTE 263

O C C UNMISTAKABULL 896U
 KOUPAL ELBA 0187
 KOUPAL BRULEE 698 AMF NHF
 KOUPALS EBONETTE 545 CAF

PSF FREEDOM 12S
SIX MILE DARK STAR 822U
 ROSE HILL DARK STAR 22P

TC FREEDOM 104 AMF CAF OHF NHF DDF
 ROSE HILL LADY DI 11F
 ROSE HILL FAME 4K
 ROSE HILL DARK STAR 31H

BW	WW	Index	YW	Index	EPDs	BW	WW	YW	Milk	TM	REA	Marb
82	691	102	1161	101	1.8	55	90	28	56	0.42	0.31	

- calving ease with grow, fresh genetic package, smooth made
- 822U is a member of the highly productive Darkstar family. She is a herd bull factory with sons selling to Owen Brodwin, Spencer Kirby, Corey and Jackie Dumelie, WLL Farms and Anderson Ranch. One daughter retained in herd.
- *Calving Ease 3*
- *Dam's Average Wean Index: 111 (8 calves)*



Sire to Lot 116



Full sister to Lot 116



Dam to Lot 116



Lot 118 and Dam

118

SIX MILE GQ 49E

SIXM 49E · 2003473 · March 02, 2017

SILVEIRAS STYLE 9303 AMF CAF NHF DDF
SILVEIRAS S SIS GQ 2353
 K N C CABIN CREEK SANDY 804 DDF

S A V BISMARCK 5682 AMF CAF OHF NHF DDF
SIX MILE BLACKBIRD 16X
 SIX MILE BLACKBIRD 864U

GAMBLES HOT ROD
 SILVEIRAS ELBA 2520
 B C LOOKOUT 7024 AMF CAF OHF NHF DDF
 K N C CABIN CREEK SANDY
 G A R GRID MAKER AMF CAF OHF NHF DDF
 S A V ABIGALE 0451
 PSF FREEDOM 12S
 ROSE HILL BLACKBIRD 4N

BW	WW	Index	YW	Index	EPDs	BW	WW	YW	Milk	TM	REA	Marb
92	682	97	1169	91		0.7	42	73	19	40	0.16	0.43

- balanced, hairy, fresh genetic package
- 16X is a sensible sized, solid footed cow that injects calving ease and maternal worth into her offspring. She has proven herself worthy of our donor pen and is the type of efficient female we strive for.
- *Calving Ease 3*
- *Dam's Average Wean Index: 104 (6 calves)*



Lot 119 and Sire

119

SIX MILE COMPLETE 171E

SIXM 171E · 2003654 · March 10, 2017

SUMMITCREST COMPLETE 1P55 AMF CAF OHF NHF DDF
CONNEALY COMPLETE 8454 AMF CAF NHF
 BLACK BEARA OF CONANGA 8454 DDF

S A V BISMARCK 5682 AMF CAF OHF NHF DDF
SIX MILE BLACKBIRD 16X
 SIX MILE BLACKBIRD 864U

C F RIGHT DESIGN 1802 AMF CAF OHF DDC
 SUMMITCREST ELBA 1M17
 TC GRID TOPPER 355 AMF CAF OHF NHF DDF
 BLACK CHOICE OF CONANGA 5289
 G A R GRID MAKER AMF CAF OHF NHF DDF
 S A V ABIGALE 0451
 PSF FREEDOM 12S
 ROSE HILL BLACKBIRD 4N

BW	WW	Index	YW	Index	EPDs	BW	WW	YW	Milk	TM	REA	Marb
78	725	108	1211	104		-0.8	52	89	27	53	0.55	0.27

- heavy muscled, wide based, balanced EPD profile
- 16X is a perfect uddered Bismark donor dam with sons selling to Riverfront Angus and Kyle Blake. Her first daughter sold to Colt Kornfeld and we have one daughter retained in herd (149B dam of Lot 126).
- *Calving Ease 4*
- *Dam's Average Wean Index: 108 (5 calves)*

120

SIX MILE BULL 867E

SIXM 867E · 2015113 · February 16, 2017

SUMMITCREST COMPLETE 1P55 AMF CAF OHF NHF DDF
CONNEALY COMPLETE 8454 AMF CAF NHF
 BLACK BEARA OF CONANGA 8454 DDF

HF POWER-UP 72N
JUNE OF PEAK DOT 421S
 JUNE OF PEAK DOT 853L

C F RIGHT DESIGN 1802 AMF CAF OHF DDC
 SUMMITCREST ELBA 1M17
 TC GRID TOPPER 355 AMF CAF OHF NHF DDF
 BLACK CHOICE OF CONANGA 5289

RIVERBEND POWERLINE 0050
 HF ROSEBUD 23G
 HF YOUNG GUN 139J
 CEDAR CREEK JUNE 134Z

BW	WW	Index	YW	Index	EPDs	BW	WW	YW	Milk	TM	REA	Marb
84	665	98	1265	125		2.5	46	72	22	45	0.38	0.27

- long spined, square and correct, attractive skull
- 421S was a deep bodied, sound uddered mother cow. Two daughters retained in herd (137Z dam of Lot 114).
- *Calving Ease 3*

121

SIX MILE COMPLETE 869E

SIXM 869E · 1995174 · February 16, 2017

SUMMITCREST COMPLETE 1P55 AMF CAF OHF NHF DDF
CONNEALY COMPLETE 8454 AMF CAF NHF
 BLACK BEARA OF CONANGA 8454 DDF

SOUTHERN KRUGGERAND 16H
WWF KRUGERRAND LADY LEE 150P
 WWF FORTUNE LADY LEE 77K

C F RIGHT DESIGN 1802 AMF CAF OHF DDC
 SUMMITCREST ELBA 1M17
 TC GRID TOPPER 355 AMF CAF OHF NHF DDF
 BLACK CHOICE OF CONANGA 5289

KRUGERRAND OF DONAMERE 490 AMF NHF
 SOUTHERN TALL PRIDE 72W
 MINERTS FORTUNE 2000 AMF CAF OHF NHF DDF
 WWF TRENDY LADY LEE 2E

BW	WW	Index	YW	Index	EPDs	BW	WW	YW	Milk	TM	REA	Marb
76	624	92	1133	109		0.4	40	66	24	44	0.32	0.31

- level design, extra hair, bred for longevity
- 150P was a low input, sound uddered cow.
- *Calving Ease 4*
- *Dam's Average Wean Index: 104 (11 calves)*



Lot 122

Lot 122

- moves like a cat, striking profile, exceptional quality
- 219Y is a hard-working, sound footed, good uddered cow with progeny working for Corey and Jackie Dumelie, Jason Allemand and Blairs.Ag. Maternal sibling is the \$20,000 Desert Storm bull at Blairs.Ag
- **Calving Ease 4**
- **Dam's Average Wean Index: 108 (5 calves)**



Desert Storm, Maternal Brother

122

SIX MILE ECLIPSE 229E

TWIN · SIXM 229E · 1994798 · March 15, 2017

MCATL REFLECTION 120-577
ANDERSON REFLECTION 1341
 ANDERSON BARB ROSE 4210

CONNEALY REFLECTION AMF CAF OHF NHF DDF
 BALA BELL 577 T M AMF DDF
 S A V BISMARCK 5682 AMF CAF OHF NHF DDF
 SOO LINE BARD ROSE 7317

S A V HEAVY HITTER 6347 AMF CAF OHF NHF
SIX MILE FALLING STAR 219Y
 ROSE HILL DARK STAR 22P

S A V8180 TRAVELER 004 DMF DMF AMF CAF OHF NHF OSF DDF
 S A V BESSIE HEIRESS 1184 CAC
 ROSE HILL FAME 4K
 ROSE HILL DARK STAR 31H

BW	WW	Index	YW	Index	EPDs	BW	WW	YW	Milk	TM	REA	Marb
74	681	100	1198	100		1.9	59	94	25	54		

123

SIX MILE REFLECTION 887E

SIXM 887E · 1995201 · February 19, 2017

MCATL REFLECTION 120-577
ANDERSON REFLECTION 1341
 ANDERSON BARB ROSE 4210

CONNEALY REFLECTION AMF CAF OHF NHF DDF
 BALA BELL 577 T M AMF DDF
 S A V BISMARCK 5682 AMF CAF OHF NHF DDF
 SOO LINE BARD ROSE 7317

HF HAT TRICK 170W
SIX MILE TIBBIE 215Z
 HF TIBBIE 305W

HF KODIAK 5R AMF CAF OHF NHF MAF DDF
 HF ECHO 17R
 DUFF ENCORE 702 AMF CAF OHF NHF OSF DDF
 HF TIBBIE 86T

BW	WW	Index	YW	Index	EPDs	BW	WW	YW	Milk	TM	REA	Marb
84	627	91	1203	123		1.8	49	80	20	45		



Lot 123

Lot 122

- herd bull presence, wide gauged, expressive muscle pattern
- 215Z continues to impress us by producing easily marketable offspring. Sons have sold to Kyle Blake and Anderson Ranch in past bull sales.
- **Calving Ease 4**



Sire of Lots 122, 123

124

SIX MILE REFLECTION 850E

SIXM 850E · 1995199 · February 13, 2017

MCATL REFLECTION 120-577
ANDERSON REFLECTION 1341
 ANDERSON BARB ROSE 4210

S A V PREFERENCE 9184 CAF
SIX MILE LADY BLOSSOM 83Z
 BENDORA LADY BLOSSOM 48'05

CONNEALY REFLECTION AMF CAF OHF NHF DDF
 BALA BELL 577 T M AMF DDF
 S A V BISMARCK 5682 AMF CAF OHF NHF DDF
 SOO LINE BARD ROSE 7317

S A V PROVIDENCE 6922 AMF CAF OHF NHF DDF
 S A V BESSIE HEIRESS 4149 CAF
 BENDORA ALLIANCE 31'03
 CAYMEN LADY BLOSSOM 48'02

BW	WW	Index	YW	Index	EPDs	BW	WW	YW	Milk	TM	REA	Marb
88	710	105	1161	96		2.2	56	94	27	55		

- sound footed, calving ease, proven cow family
- 83Z is a large outlined Preference daughter that is just hitting her prime. Problem free udder with one daughter retained in our herd.
- **Calving Ease 3**
- **Dam's Average Wean Index: 108 (3 calves)**

125

SIX MILE REFLECTION 21E

SIXM 21E · 1995181 · March 01, 2017

MCATL REFLECTION 120-577
ANDERSON REFLECTION 1341
 ANDERSON BARB ROSE 4210

ROSE HILL FAME 4K
ROSE HILL DARK STAR 22P
 ROSE HILL DARK STAR 31H

CONNEALY REFLECTION AMF CAF OHF NHF DDF
 BALA BELL 577 T M AMF DDF
 S A V BISMARCK 5682 AMF CAF OHF NHF DDF
 SOO LINE BARD ROSE 7317

S A F FAME AMF CAF OHF NHF DDF
 ROSE HILL DAWN 3G
 RED MR ECLIPSE DDH 152C
 ROSE HILL DARK STAR 16C

BW	WW	Index	YW	Index	EPDs	BW	WW	YW	Milk	TM	REA	Marb
78	609	89	1077	100		0.9	44	65	24	46		

- streamline design, calving ease, shapely
- 22P was a big bodied, big footed momma who was the matriarch of our Darkstar cow family. 5 daughters retained in herd (822U dam of Lot 117 and 219Y dam of Lot 122)
- **Calving Ease 4**
- **Dam's Average Wean Index: 103 (10 calves)**



Lot 126 and Dam

126

SIX MILE ENRIQUE 185E

SIXM 185E · 1995010 · March 11, 2017

S A V PRODIGY 8101 AMF NHF
REMITALL F PROSPECTOR 110Z
 REMITALL ELLEGRA 719U

SANKEYS JUSTIFIED 101
SIX MILE BLACKBIRD 149B
 SIX MILE BLACKBIRD 16X

S A V NET WORTH 4200 AMF CAF OHF NHF DDF
 S A V BLACKBIRD 3155
 JUSTAMERE 1118 CASH 665P
 REMITALL ELLEGRA 72P

SANKEYS LAZER 609 OF 6N DMF AMF
 SANKEYS ERICA 525
 S A V BISMARCK 5682 AMF CAF OHF NHF DDF
 SIX MILE BLACKBIRD 864U

BW	WW	Index	YW	Index	EPDs	BW	WW	YW	Milk	TM	REA	Marb
82	704	105	1229	112		2.1	50	88	28	53	0.14	0.45

- smooth shouldered, level design, fresh genetics
- 149B is a member of the "Blackbird" cow family. She is quickly proving her worth with a daughter highlighting the 2017 Genetic Focus selling to Hollinger Land and Cattle and one daughter retained in herd.
- **Calving Ease 3**
- **Dam's Average Wean Index: 102 (2 calves)**

THANK YOU
seems so inadequate,

But Thank You...

September 4th a devastating wildfire raged through 5 sections of our best grazing pasture. Although this has been a very difficult situation, it has also shown us the beauty of others.

Thank You to our friends, family and neighbors for coming from far and wide to help fight the fire. From people fighting on foot, to water trucks, to people who brought food and drinks.

Thank You to the many local fire departments that worked tirelessly, The Grassland National Park fire crew AND especially the Glentworth Fire Department whose dedication went above and beyond.

Thank you to the RM of 44 for all the assistance throughout.

Thank you to Murray & Jan Linthicum, Paige & Warren Feser, Louise & Wade Popescul and Robin & Stacy Poirer for offering pastures to allow us to gather our scattered herd after the fire.

We hate to miss people - but feel we have to Thank Miles & Sherri Anderson, Clint Smith, Chay Anderson, The Fitzpatrick Family, Lloyd and Nyla Anderson & Family, Clint & Dawn Mitchell, Darwin & Laurie Raes, Kai, Pam & Norm Lee, Pete & Jill Jenkins, the Zahariuk Family, John & Lorry Okraincee, Matt Criddle and so many more for tireless efforts and support.

Thank you to the Sask Stockgrowers Association who have stood by us producers with the development of the Wildfire Relief Fund.

Thank you to ALL those who donated to the Wildfire Relief Fund - every single donation has made a difference.

We would be remiss not to mention donations of feed that affected us directly: Thank You to Neil & Julie Mackenzie, Meyronne, SK * David Lewis, Kyle, SK * O & T Farms, Regina, SK * Pete & Jill Jenkins, Glentworth, SK * Paul Lacasse, Kincaid, SK* and a wonderful family from McCord, SK who wish to stay anonymous.

We are truly HONORED to live among the finest people in the world and are humbled by your generosity. *"True colors shine brightest in the darkest hours."* Thank You from the bottom of our hearts!

*Clayton & Corinne Gibson, Cade & Coy
Tyson & Callie Hertz
Walter & Rosemary Wall*



Thank You

To all the buyers and bidders at our 2017 sale.



VOLUME BUYER

Thank you
Anderson Ranch Inc., SK



**Red Six Mile Durant 393D
HIGH SELLING RED BULL**

Thank You
Sunberry Valley Ranch, AB




**Six Mile Desert Storm 94D
HIGH SELLING BLACK BULL**

Thank You
Blairs.Ag Cattle Co., SK

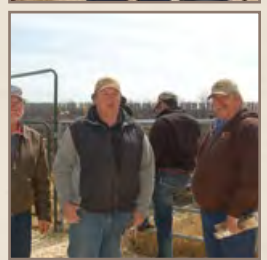
BIDDING: Each animal will be sold to the highest bidder whenever there are two or more bids. The auctioneer will settle any disputes. **TERMS:** The terms of the sale are cash. The right of property shall not pass until after the settlement is made. All settlements will be made with the clerks of the sale immediately following the conclusion of the sale and before any cattle will be released from the ranch. Financing terms are available if prior arrangements are made with Clayton and Corrine. **PURCHASER'S RISK:** Each animal becomes the risk of the purchaser as soon as sold. Cattle will be kept free of charge until May 1, 2017, when they are to be picked up or delivered. We strongly urge the buyer to insure any bulls left, as they are yours when the hammer falls. **DELIVERY:** We offer free delivery of your bull(s) to central locations in Canada and the United States up to 500 miles. Free delivery applies to purchases of \$5,000 or more. Purchases below \$5,000 will be delivered at cost. If you choose to haul your own bull, and take him within 5 days of the sale, we will deduct \$100 from the purchase price of each bull. **INSURANCE:** A Livestock Insurance Agent will be present to care for the insuring of cattle. **CERTIFICATE OF REGISTRY:** A certificate of registry and transfer will be furnished on all cattle sold as registered animals. **ANNOUNCEMENT:** Changes of information contained in this catalogue relating to the animals offered for sale will be announced from the auction box and such announcements shall take precedence over the printed matter in this catalogue. **BREEDERS GUARANTEE:** Six Mile Red Angus guarantees to sell you a bull that has passed a semen test and breeding soundness evaluation completed by a qualified, licensed veterinarian. However, should a problem arise, please let us know so arrangements can be made without delay. Should your bull fail to be a satisfactory breeder - as agreed upon by buyer and seller - he will be replaced with a bull of equal value. Should this not be possible, an adjustment will be made to reflect the value of the bull in question, or a credit given towards the purchase of another bull. Six Mile keeps bulls out of the sale for this sole purpose. Yearling bulls shall be guaranteed breeders for no more than 20 females. AGAIN, each bull as passed a semen evaluation, however, it is the buyer's responsibility to make sure that your new bull can physically service a female and is able to settle them. In the rare case he is not working, please let us know ASAP and we will be happy to rectify the matter. We will however, not provide replacement or adjustment for physical injury or mismanagement. Bearing this in mind, we stress the important of insurance on your bull. At no time shall the seller's liability exceed the purchase price of the bull. In the event of any unlikely dispute the standard terms and conditions of the Canadian Angus Association will apply. **IDENTIFICATION:** Each purebred animal carries a readable tattoo. **LIABILITY:** Although every precaution will be taken to protect the safety and comfort of the buyer, neither owners, sale manager, clerks or anyone connected with the sales assumes any responsibility, legal or otherwise, for damage of any kind. **HEALTH STATUS:** All Six Mile bulls have been vaccinated with Express 5 vaccine which includes IBR, PI-3, BVD - type 1 and 2 and BRSV. They have also been vaccinated with a somnugen and black leg vaccine. Each bull has been treated with Ivomec. **US FUNDS & EXPORT:** American money will be accepted at the most current rate of exchange on sale day and announced prior to the sale. Bulls will be export tested at Six Mile's expense and delivered as soon as possible following the sale. **RIGHT TO DRAW SEMEN:** SIX MILE RED ANGUS reserves the right to draw 100 straws of semen for within herd use from any bull sold in the Sale. To be done at Six Mile's expense and Buyer's convenience. **DNA TESTING:** Any bull sold needing DNA testing will be done by Six Mile provided the bull remains at Six Mile after the sale. Please inform the sales clerk at time of settlement. **SIGHT UNSEEN PURCHASES AND GUARANTEE:** If you are unable to attend our sale, but are interested in our bulls - We can take an order on any of the bulls in the sale. Our sales consultants can also help you make selections. Give Clayton or Corinne a call to ensure the bulls you (or our sale consultants) have selected are ones we feel will work for you. If you have discussed your selections with Clayton or Corinne prior to the sale, your satisfaction is 100% guaranteed. When the bull is delivered to you, you are under no obligation to take him should he not meet your needs.



Six Mile & Guests
"Range Royalty" COMMERCIAL BRED HEIFER SALE
 Congratulations to the progressive commercial cattlemen
 for consigning their high quality commercial bred heifers to
 this successful event. Using Six Mile Genetics enables to you
 to consign your top end Angus and Angus cross females to this
 sale. Join Us December 2018 at Heartland Livestock, Swift Current.

IN MEMORY OF
Frank Linthicum
 A wonderful neighbour and friend and
 always a welcome guest at Six Mile events.



SIX MILE RANCH

Box 8, Fir Mountain, Sask. S0H 1P0



LOT 1



LOT 38



LOT 29



LOT 26



LOT 101



SIX MILE
6M *Ranch Ltd.*

43RD ANNUAL BULL SALE

SATURDAY, APRIL 14, 2018

At the Ranch, Fir Mountain, SK