

BLACK ANGUS BULLS • ANGUS INFLUENCE BULLS
ANGUS INFLUENCE FEMALES



14TH ANNUAL

BLUE
COLLAR

BULL
SALE

SATURDAY, APRIL 11, 2020 • 1:00 P.M.
HEARTLAND LIVESTOCK • YORKTON, SK

14TH ANNUAL

BLUE COLLAR BULL SALE

WELCOME

Welcome to the Annual Blue Collar Bull Sale featuring some of the top Angus bulls you will find across the country. These bulls, year in and out, represent an accumulation of a lot of time and energy not to mention the blood, sweat and tears throughout the year spent fine tuning their product. One of the real advantages to a buyer coming to a sale with multiple breeders being represented is the fact that each breeder does things just a little different then the next giving you, the buyer, the opportunity to choose which fits best for you. One thing that comes together as a common goal amongst these breeders is the search to bring you a reliable product that represents excellent value for you the buyer. The multitude of repeat customers that attend this sale year in and out to select genetics that will influence their herd for the upcoming years is reassuring that these programs are working and have become an important puzzle for their respective herds.

We invite you down Friday, April 10th to stop by Heartland Livestock in Yorkton to preview these genetics and a little pre-sale hospitality. Saturday, sale day is always busy times with spring around the corner but please join us for the sale and some fellowship after the sale as well. If you have any questions regarding the offering, the programs represented feel welcome to contact any of the consignors, sales staff our ourselves at Castlerock Marketing!

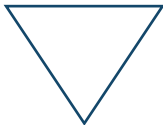
See you sale day!

Shane Castle

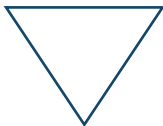
Castlerock Marketing



Northern View Angus



Parkwood Farm



Swan Hills Ranch

SALE MANAGEMENT

CASTLEROCK MARKETING

Shane Castle

Cell: 306-741-7485

castlerock.mktg@sasktel.net

Dean McAvoy

306-784-2241



Watch and Bid Online

Can't make it to the sale? **Watch & Bid Online.**

With DLMS you can Watch, Listen & Bid on your computer just like you were there with online bidding over the internet

Instructions for Viewing And Bidding At the Sale

Visit www.dlms.ca, Fill out the registration form located under registration and sign-up for your free user account to select a username and password.

BIDDERS - To be approved as a bidder, Log in and click BUYER APPROVAL tab, select the sale you are interested in bidding at and click sign up.

For more information or for help getting approved Call:

Mark Shologan - 780-699-5082 or DLMS Purebred Team 780.991-3025

Direct Livestock Marketing Systems
We're Making the Connection

DLMS
www.dlms.ca

To find an agent or sale near you today

visit www.dlms.ca

Purebred Sales • Daily Presort Sales

Direct Off-farm Sales every Thursdays at 10:00 am

Saturday, April 11, 2020 • 1:00 p.m.
Heartland Livestock • Yorkton, SK

SALE DAY PHONES

Shane: _____ 306-741-7485
Troy: _____ 306-728-8911
Scott B: _____ 306-621-3638
Scott T: _____ 204-734-0210
Heartland Livestock: _____ 306-783-9437 or 306-786-3634
Junior from Heartland: _____ 306-730-0129

CONSIGNORS

Northern View Angus

Box 211, Neudorf, SK S0A 2T0
Troy, Amy, Alexis & Talon Frick

Cell: 306-728-8911

Alvin & Marlene Frick

306-728-3295 • northernviewangus@imagewireless.ca

Parkwood Farm

Box 48, RR 1, Yorkton, SK S3N 2V3

Jack & Joyce

306-782-7112

Scott, Mandy, Katie, Landon & Macy Burkell

306-783-7986 • Cell: 306-621-3638

s.a.burkell@sasktel.net

Swan Hills Ranch

Box 2471, Swan River, MB R0L 1Z0

Scott, Cindy, Martina, Robyn & Parker Tibble

Cell: 204-734-0210 • Ranch: 204-539-2570

stibblemail@gmail.com

View the Catalogue Online at:

www.buyagro.com

www.castlerockmarketing.com

View the Sale Bull Videos

Online at:

www.cattlevids.ca

Find us on Facebook



AUCTIONEER:

Clayton Hawryluk, Heartland

_____ 306-621-3824

BLOCKMAN:

Shane Castle _____ 306-741-7485

RINGMEN:

Harvey Exner _____ 306-621-5486

Hugh Elliot _____ 306-230-7805

Kyle Prokopetz _____ 306-621-9391

Levi Hall _____ 306-641-6271

HOTEL ACCOMMODATIONS:

Days Inn, Yorkton _____ 306-783-3297

LIVESTOCK INSURANCE:

Farrell Agencies _____ 306-783-4477

DLMS:

Whitney Bosovich _____ 780-991-3025

GREEN TAG PROGRAM:

Canadian Angus Association

Bob Toner _____ 403-571-3580

14TH ANNUAL

BLUE COLLAR BULL SALE

OFFERING:

64 Black Angus Bulls

18 Angus Influence Females

View the bulls

Friday, April 10

from 6:30-8:00 PM

Saturday, April 11

Lunch at 11:00 AM

SALE TIME 1:00 PM

WE WOULD LIKE TO THANK
THE FOLLOWING SPONSORS...



Farm Credit Canada

\$150 Sponsorship

to the pre-sale meal

Double R Autobody

\$75 Sponsorship

to the post sale meal

Deep South Animal Clinic

Dr. Andy Acton

& SweetPro Premium

Feed Supplements

Buyer's Draw Sponsors

Future Ford, Melville, SK

Hat Sponsor

Welcome to the 14th Annual Blue Collar Bull Sale. The Blue Collar group hopes that all is well with you and your family. It is our hope that winter has treated you well.

As I sit down to write this welcome I am watching dawn break at 7:00 am and seeing the temperature at a comfortable -10 degrees Celsius and the promise of above 0 temperatures for the next while. We have even been having February calves out in the corrals and the pairs never even hit the barn. It's awesome. Extended sunlight and warmer weather isn't much but it is all it takes for us, as beef producers to get a little smile on our face.

This year, like every other, presented it's challenges. We have weather issues and crop still left in the field. We have commodities being held up due to world or national political situations. International spats over political pawns as countries try to establish their dominance over one another. All these things impact our bottom lines.

Despite all these things, which we cannot control, we charge on in agriculture. We say, "Next year will be better." "It would sure be nice just to have a normal year." Each year we continue to plant our crops, breed our cattle in hopes of a better year and increased farm income. Truly the only thing that is really normal is that things are always changing and that we are to expect the unexpected and challenges to always crop up.

One thing you can always count on is that the Blue Collar Bull Sale is held on the 2nd Saturday in April each year. Whatever, your needs are for genetics in your herd you can bet you can find the quality, performance, calving ease and maternal power you are looking for at the sale.

Another thing you can count on is the pride we all have as family operations to bring you our best. Each of us have all hands-on deck throughout the year to make our operations a success. Currently each of our operations have three generations working at our livelihood and passion in agriculture each day - our cattle. The entire cycle from calving in winter, breeding in spring, weaning in fall, showing... takes dedication and perseverance. Planning, selecting and hard work are essential to grow and improve our herds each year. As the Blue Collar group we take comfort in knowing we are doing our absolute best to improve what we do in hopes to provide a product that is acceptable for you the buyer.

Throughout the catalogue you will find an entire host of information to aid you in your bull or heifer selection. There are footnotes, pictures, pedigrees, weights, sire and dam information. Please feel free to contact any one of us for more information or stop by our farms to view the bulls prior to the sale.

The Blue Collar Bull Sale Group would like to thank the following for their contribution to the success of our sale:

- Everyone who attended last year's sale, our bidders and buyers.
- All our friends and family who helped us before, during and after the sale.
- All our sponsors - We do business with all of them and recommend you give them a try, too.
- To Castlerock Marketing, Brad Knutson, Hugh Elliot, Levi Hall and Kyle Procopetz, the Heartland Staff and all our friends for their work on our sale.

We believe that we have a solid and supportive team who can work to make sure that you are well taken care of and your livestock needs are met. Please contact any member of the Blue Collar Group or the sales staff with any questions to help you select the animals to meet your needs.

Once again we are going to start our sale with a groups of three or five commercial heifers. Many of these heifers come from bulls that have been purchased from the Bull Collar consignors. Look to increase the productivity of your cow herd with these quality genetics.

We would also like to make you aware that Farrell Agencies will be on hand sale day to assist you with the insurance of your purchases. As breeders we will support you, the buyer, in every way we can to ensure our cattle work. However, there are unforeseen events which occur, like illness, injury, or death, which the buyer and seller cannot control or guarantee. For situations like this there is insurance. We strongly recommend you insure all your livestock purchases but want you to insure any cattle which will be going home to our respective farms for a while. Please refer to back of catalogue for all sale conditions.

We take pride in the fact that we have an increase number of repeat customers. Please refer to the list of last year's Blue Collar purchasers at the back of the catalogue. We truly enjoy the connections and socialization which is involved with our customers and the cattle business. We would like to invite you to give us a call or drop by our farms for a visit any time.

We would like to welcome you to the 14th Annual Blue Collar Bull Sale. Cattle will be arriving at Heartland Thursday and may be viewed anytime until sale time. Consider this your invitation to come to Heartland in Yorkton on Friday, April 10th from 6:30 - 8:00 PM for a viewing of the cattle and fellowship and to the sale on Saturday, April 11th at 11:00 AM for lunch and to view the cattle and for the sale at 1:00 PM.

See you at the Sale,

Blue Collar Sale Group

NORTHERN VIEW ANGUS

Agriculture continues to throw twists and turns at us each year. We go through drought, then decent rains, then excessive moisture and then winter. LOL! It is amazing the resilience that, we as farmers, must persevere through whatever the weather, the economy and our government throw our way. We salute each of you for your tenacity and persistence.

Now through all this, we must do many things right to make a profit. When it comes to cattle the key here is the best cows we can raise. Each year we cull and try to retain the best females we can, and they must raise a calf in whatever the environment does. We are proud of our bull offering and you can rest assure our cows have raised some pretty darn good breeding stock. You will see/hear me talk about our cows a great deal throughout the footnotes, as we believe they are very important. As I write the footnotes and speak of the bull and/or his dam, I find myself being very repetitive in what I am saying. When I reflect on this repetition, it is a good thing because it speaks to the consistency in our bulls and cow herd that we have been so diligently attempting to develop. Our female factory is one we are quite proud of. These bulls all have great cows in their pedigrees.

We have really worked on not pushing our bulls. Feeding them a ration of 1% of their body weight in grain/supplement and the balance of their ration with brome, timothy, orchard grass and millet hay. The hay is of excellent quality this year. We monitor the feed intake of our bulls to ensure no overfeeding and to promote a sound growing bull that will work for you for the long term. Bulls have free choice OLS #9 tubs to promote scrotal development, semen quality and structural soundness. The bulls are raised in large pens and/or pasture areas to allow for ample room to wander, rumble and explore.

Our goal is to breed for low to moderate birth weight calves with solid growth to weaning and yearling weights. We realize that we all sell cattle by weight at the end of the day so we seek out sires that will provide reasonable birth weights, solid performance numbers and good maternal qualities. We all need females that are going to work.

This year we have S A V Resource, Scheifelbein Attractive, Boyd Cartwright, 3F Epic, EXAR Resistol and Ellingson Homegrown as AI sires we selected. In addition, we have some very strong herd bulls that have produced some top end bulls in this sale. Compass 108D, Grand Slam 121E, Rock Star 10D, Milk Dud 21E and Vision 6C have produced very competitive progeny.

I have catalogued our bulls in sire groups and in numerical order of when they were born within that group. The oldest bull is first and the youngest bull is last of that sire group.

Please review all bulls carefully and give me a call with any questions.

See you soon!
Troy



We are retaining a 1/3 semen interest in all our bulls unless otherwise stated.

This does not impact you owning the bull, the rights to walk the bull or the salvage value on the bull.

All it means is that if at some point we would like to draw semen for in herd use we would arrange at your convenience and our expense to do so.



Talon with Joey

THANKS TO

Bieber Trucking, Duff and Trustmark Insurance Brokers, Melville for purchasing Talon's steer Joey.

Thanks to Darryl and Delores Baber, Century Glass; Bryon, Raelene, Avery and Jenaye Prieb and Deep South Animal Clinic, Dr. Andy Acton for purchasing Alexis' steer, Chandler.



Alexis with Chandler
Grand Champion Showman
Regional 4-H



SAV RESOURCE 1441

Top 1% for Yearling Weight and Weaning Weight.

We used Resource for the shape, muscle and thickness he would provide. He is known as a foot and udder improver throughout the breed. With over 2400 progeny registered in Canada alone he has been tested really proven what he can do in terms of his consistency and functionality. We have three females working in our herd as of this spring. They each are stunning broody females with excellent udders. Their calves are doing great. The bulls are thick, shapely and powerful.

Lot 1



Northern View **INFERNO** 89G

Lot 1 2104361 FTA 89G 08/01/2019 Male

RITO 707 OF IDEAL 3407 7075
SA V RESOURCE 1441 1707295
 SA V BLACKCAP MAY 4136

SKYEBROOK NEW FLY 29Z
NORTHERN VIEW BEAUTY 121B 1802359
 NORTHERN VIEW BEAUTY 87Y

R R RITO 707
 IDEAL 3407 OF 1418 076
 SA V 8180 TRAVELER 004
 SA V MAY 2397
 SKYEBROOK FLY TRAVELER 8X
 SKYEBROOK GIRL 9W
 SITZ UPWARD 307R
 NORTHERN VIEW BEAUTY 78K

This bull is a very well-rounded bull in so many ways. He is full of shape and red meat with a solid quarter, broad top, and a very deep middle to him. His young dam is out of the Beauty cow family. The Beauty cow family was the first one we purchased when we moved into the Angus world. Beauty 121B is quickly becoming one of those cows we are real excited to see what type of calf she drops each spring. This bull has a very strong structure and eye appeal to him. The Resource genetics tend to produce cattle with impressive growth, added muscle and shape. The Beauty X Resource combo should produce quality replacement females as well. A powerful and broody paternal sister sold to Kris Den Brok of Esterhazy last fall. Mark Hansen of Archerwill and ourselves have maternal daughters working in our herds. They really look great.

This bull is moderate in his weights and EPDs. Inferno 89G is a bull I would try on second calvers or larger heifers before attempting him exclusively as a heifer bull.

EPD	BW	WW	YW	Milk	TM
	2.7	55	99	22	50

ACC	BW	Adj. 205	Adj. 365
	80	833	1379



Northern View
 Beauty 121B
 Dam

NORTHERN VIEW ANGUS

Northern View **INFERNO** 109G

Lot 2

Lot 2	2104380	FTA 109G	23/01/2019	Male					
RITO 707 OF IDEAL 3407 7075		R R RITO 707							
S A V RESOURCE 1441 1707295		IDEAL 3407 OF 1418 076							
S A V BLACKCAP MAY 4136		S A V 8180 TRAVELER 004							
NORTHERN VIEW QUANTUM 86P		S A V MAY 2397							
NORTHERN VIEW LUCY 85U 1433827		GDAR QUANTUM 963							
BELL BLACK LUCY 5G		CRESCENT CREEK BLACKBIRD 21J							
		CENTURY TOUCHSTONE 131							
		BELL BLACK LUCY 14D							
EPD	BW	WW	YW	Milk	TM	ACC	BW	Adj. 205	Adj. 365
	2.8	39	84	21	41		88	799	1518



The Inferno bulls are true Resource sons that are virtual mirror images of one another. He has that real muscle shapely look to him. He weaned off very nicely but once he got on feed he took off to place himself at the top of the pen in terms of average daily gain and overall improvement. Inferno 109G is a shapely son of our hard working and productive Lucy 85U cow. Lucy 85U typically raises a star calf each and every year. She is the grandmother to our herd sire, Grand Slam 80C, who we own with Bell Angus at Pense. He is leaving very functional and attractive daughters at both places.

Inferno 109G is a bull that numbers up to be moderate calving ease but again would field test him on second calvers and/or larger heifers before making the jump to a calving ease sire.

3F Epic is a bull that hit the Angus scene by storm. We selected him for his smooth structure, awesome calving ease numbers and incredible growth. His weaning and yearling weights are in the top 1% of the breed at over 90% accuracy. Epic is very proven and has strong maternal qualities. Both Epics we have in the sale are ¾ brothers. You will see the consistency they offer.

3F **EPIC** 4631



Northern View **INVICTUS** 80G

Lot 3

Lot 3	2112378	FTA 80G	09/01/2019	Male	
You will admire this bull for his phenotype, mass and shape. This bull is structurally very sound, has awesome performance. Invictus 80G is in the top 2% of the breed for weaning weight and top 8% of the breed for yearling weight and maternal traits. This bull is long spined, deep bodied and muscular. When you move in behind him you will notice his great quarter and strong and broad loin. He carries his muscle and shape very well from front to back. This bull is from Beauty 94W who is an incredibly powerful, deep bodied cow in our herd. She is a cow you will stop and analyze further each time you view our females. We have a stunning young daughter working in our herd and she is the dam to the Lot 11 bull, Stellar 97G. Beauty 94W has daughters working at Chris Hansen's, Archerwill, SK and Mike and Nicole McKeivitt's, Lloydminster, SK. Invictus 80G is halter broke and a member of our 2019 Champion Angus and Overall Reserve Champion Pen of Bulls at Harvest Showdown in Yorkton. Look for 80G to provide moderate birth weight calves with explosive growth and excellent value for your bottom line.					
<i>Invictus 80G, a bull that numbers up to be moderate calving ease but again would field test him on second calvers and/or larger heifers before making the jump to a calving ease sire.</i>					
EPD	BW	WW	YW	Milk	TM
	2.4	69	111	21	56
ACC	BW	Adj. 205	Adj. 365		
	88	893	1452		



Northern View
Beauty 94W
Dam



79D
A maternal
brother working
at Venture Farms,
Roblin, MB



VARILEK PRODUCT 2010 04
3F EPIC 4631 2012720
ZEBO QUEEN 1072

CONNELLY FINAL PRODUCT
VARILEK PEARL 0006 014
EF COMPLEMENT 8088
EXG BLACKCAP 6247 PPC

WINDY WILLOWS ALLIANCE 365
NORTHERN VIEW BEAUTY 94W 1503753
NORTHERN VIEW BEAUTY 78K

SITZ ALLIANCE 6595
WWF STOCKMAN EUTHALLA 127J
NEW FORCE LASER 3H
CRESCENT CREEK BEAUTY 118E

Lot 4



Northern View **INVICTUS** 83G

Lot 4	2112384	FTA 83G	08/01/2019	Male
VARILEK PRODUCT 2010 04		CONNEALY FINAL PRODUCT		
3F EPIC 4631 2012720		VARILEK PEARL 0006 014		
ZEBO QUEEN 1072		EF COMPLEMENT 8088		
WINDY WILLOWS ALLIANCE 365		EXG BLACKCAP 6247 PPC		
NORTHERN VIEW RUTH 87W 1503746		SITZ ALLIANCE 6595		
NORTHERN VIEW RUTH 81S		WWF STOCKMAN EUTHALLA 127J		
		A A R REALLY WINDY 1205		
		NORTHERN VIEW RUTH 85P		

EPD	BW	WW	YW	Milk	TM	ACC	BW	Adj. 205	Adj. 365
	1.7	56	101	23	51		87	780	1400

This bull impresses me more and more each day. He has tonnes of hair and I really, really love his top. Invictus 83G is backed by our powerfully maternal Ruth cow family. When you look up Ruth in the Webster's Dictionary or for the younger folk you can say "Hey Google, give me the definition for Ruth", these are the definitions you will get:

Ruth

Noun

1. Guaranteed Replacement Females.
2. Structurally Sound with desired feet, legs and udder.
3. Perennially produces above average progeny.

We have an amazing young maternal sister working in our herd. A maternal brother sold in the 2018 Blue Collar to Marc Laforest, Saint Nazaire, QC. Invictus 83G should provide moderate calving ease with ample growth.

Recommended for heifers.

FTA 106E
A maternal brother working at
Marc Leforests, St. Nazaire, QC



Northern View **COMPASS** 108D

We decided to use a homegrown Connealy Consensus 7229 sire out of Atalanta 88X, a CAA elite dam that we raised. This bull is a long bodied bull with great feet, large scrotal and outstanding disposition. This bull is quickly becoming a bull that is one we look forward to having calves from. It is great to have his second crop of calves hitting the ground this spring.

Lot 5



Northern View **COMPASS** 119G

Lot 5	2115282	FTA 119G	07/02/2019	Male
-------	---------	----------	------------	------

This bull is one that may be able to have a halter on and shown this summer and fall. He has wide hips which carry into his broad top and fit nicely into his shoulders and neck. This bull has tonnes of hair and very good scrotal development. This February bull is out of a gorgeous Zara Lisa 83D cow. His granddam, 35U, has been nothing short of awesome since we bought her. Zara Lisa 83D has an absolute pistol of a Scheifelbein Attractive daughter on her right now. Proof of powerful and consistent genetics. Compass 119G has powerful maternal genetics not only on the bottom side but also great maternal genetics on the top side with our elite dam, Atalanta 88X. This cow bull will almost certainly produce daughters at the top of your replacement pen each year. When you breed to genetically and phenotypically powerful parents you get Compass 119G. Whether you are looking for a cow bull or not, you will want to find this guy in the pen.

EPD	BW	WW	YW	Milk	TM
	5.4	57	97	25	54

ACC	BW	Adj. 205	Adj. 365
	96	910	1450

CONNEALY CONSENSUS 7229
NORTHERN VIEW COMPASS 108D 1901475
NORTHERN VIEW ATALANTA 88X

CONNEALY CONSENSUS
BLUE LILLY OF CONANGA 16
BELL NET RETURN 3U
NORTHERN VIEW ATALANTA 78T

CONNEALY CONSENSUS 7229
NORTHERN VIEW ZARA LISA 83D 1901453
MVF ZARA LISA 35U

CONNEALY CONSENSUS
BLUE LILLY OF CONANGA 16
KMK ALLIANCE 6595 I87
MVF ZARA LISA 327R



Northern View
Zara Lisa 83D
Dam



Northern View
Atalanta 88X
Granddam
to Lots 5-7

NORTHERN VIEW ANGUS

Northern View **COMPASS** 125G

Lot 6	2115283	FTA 125G	15/02/2019	Male
CONNEALY CONSENSUS 7229 NORTHERN VIEW COMPASS 108D 1901475 NORTHERN VIEW ATALANTA 88X		CONNEALY CONSENSUS BLUE LILLY OF CONANGA 16 BELL NET RETURN 3U NORTHERN VIEW ATALANTA 78T CONNEALY ONWARD SITZ HENRIETTA PRIDE 81M BAD LANDS RIGHT TIME 78N WWF FOCUS BLACKBIRD E 21L		
SITZ UPWARD 307R WWF UPWARD BLACKBIRD 44B 1806484 WWF RIGHT TIME BLACKBIRD E 102				

EPD	BW	WW	YW	Milk	TM	ACC	BW	Adj. 205	Adj. 365
	3.7	51	97	28	53		68	812	1341

Well, here is Alexis' bull, Willy. His temperament is outstanding. He always loves a good scratch and pet. Willy is structurally sound and eye appealing. He is smooth shouldered, nice headed and has great hair. His dam, Blackbird 44B was purchased as a bred from Windy Willows Farm. They are very particular about structure and longevity. We purchased 44B fully confident she would possess those qualities and she does. Blackbird 44B has a daughter working well for Landon Bostock, Indian Head, SK. Look to Compass 125G to provide moderate calving, good growth and eye appealing progeny.



Northern View **COMPASS** 129G

Lot 7	2115284	FTA 129G	18/02/2019	Male
CONNEALY CONSENSUS 7229 NORTHERN VIEW COMPASS 108D 1901475 NORTHERN VIEW ATALANTA 88X		CONNEALY CONSENSUS BLUE LILLY OF CONANGA 16 BELL NET RETURN 3U NORTHERN VIEW ATALANTA 78T SKYEBROOK FLY TRAVELER 8X SKYEBROOK GIRL 9W CFS BISMARCK 11X NORTHERN VIEW LUCY 79X		
SKYEBROOK NEW FLY 29Z NORTHERN VIEW LUCY 115C 1852070 NORTHERN VIEW LUCY 82A				

EPD	BW	WW	YW	Milk	TM	ACC	BW	Adj. 205	Adj. 365
	3.9	41	81	26	47		88	830	1364

Compass 129G is a deep bodied, powerful and big volume young bull. If you see his dam, Lucy 115C, you will see where he gets these traits from. As with all three of the Compass calves I love their hair coat, shape in their quarter and loin and their overall structural design. Look to Compass 129G to add some real nice punch, style and maternal qualities to his progeny. This bull gained an average of 3.33 lbs. per day from weaning to yearling. We have a maternal sister waiting to calve as I write these footnotes. She looks just like her mama. I love her. Robert Wunder of Foam Lake purchased Lucy 115C's first calf at the 2018 Blue Collar Bull Sale.



NORTHERN VIEW **GRAND SLAM** 121E

Here is a bull we bred, raised and kept to use ourselves. He has incredible weaning and yearling weights numbers being in the top 1% of the breed in both. A huge barrel, great scrotal development, very hairy and fantastic disposition to boot. Sadly, we only got one calf crop from "Bubba" because he sustained an unrecoverable injury to his man part. We have two excellent replacement daughters from him and here are two very good sons for you to analyze. Bubba is a maternal sibling to the dam of the Lot 7 bull.



101E
Paternal sibling to 121E that we bred and raised.

Northern View **GRAND SLAM** 124G

Lot 8	2115346	FTA 124G	12/02/2019	Male
VISION UNANIMOUS 1418 NORTHERN VIEW GRAND SLAM 121E 1975252 NORTHERN VIEW LUCY 82A		VISIONTOPLINE ROYAL STOCKMAN VISION EDELLA 665 CFS BISMARCK 11X NORTHERN VIEW LUCY 79X ANKONIAN ELIXIR 100		
NORTHERN VIEW FLYING ELIXIR70M NORTHERN VIEW LUCY 83R 1259826 NORTHERN VIEW LUCY 72J		CRESCENT CREEK RUTH 6F BELL STOCKADE 7G BELL BLACK LUCY 5G		

EPD	BW	WW	YW	Milk	TM	ACC	BW	Adj. 205	Adj. 365
	4.7	56	109	20	48		88	861	1306

This guy is out of a cow that was 15 years old. If your looking for longevity in your genetics this may be your bull. Lucy 83R has had four daughters and all of them went back into our herd. She has numerous sons that have gone through the Blue Collar over the years. They have gone to Corvet Angus, Melita, MB, Vision Valley Ranch, Cleardale, AB, and Crazy K's Ranch, Francis, SK. This bull has very nice shape and growth to him. He will make an excellent moderate framed cow bull. Grand Slam 124G has a cool maternal pedigree with Lucys on the top and bottom, powered by Ruth 6F. Let's not forget the bull who adds style, structure and an outcross pedigree, Vision Unanimous.



Lot 9



Northern View **GRAND SLAM** 127G

Lot 9	2115347	FTA 127G	15/02/2019	Male					
VISION UNANIMOUS 1418		VISIONTOPLINE ROYAL STOCKMAN							
NORTHERN VIEW GRAND SLAM 121E 1975252		VISION EDELLA 665							
NORTHERN VIEW LUCY 82A		CFS BISMARCK 11X							
COLE CREEK BLACK CEDAR 46P		NORTHERN VIEW LUCY 79X							
BLACK CREEK BLACKCAP 415B 1786788		C H QUANTUM 6247							
EASTONDALE BLACKCAP 82'12		COLE CREEK CLOVA JUANADA 67							
		MINBURN MAIN EVENT 40W							
		EASTONDALE BLACKCAP 55'09							
EPD	BW	WW	YW	Milk	TM	ACC	BW	Adj. 205	Adj. 365
	2.9	55	99	20	48		85	844	1289

If you asked me to describe this bull I would use the words "moderate with no extremes in any direction." Grand Slam 127G is very well put together with sound weights, structure and genetics. He has a moderate birth weight and birth EPD. On his dam's side he has calving ease. *I would suggest a year of calving out larger heifers with calving ease on their side or second plus calvers to field test this bull before exclusively using him on heifers.* 127G's dam is a very nice cow with an excellent udder and great feet. Grand Slam 127G is a very eye-catching bull that has a dam and sire that should equate to very attractive offspring. Maternal brothers have sold in the Blue Collar to Morris Shumanski, Ethelbert, MB and Randy Trost, Yorkton, SK.



Schiefelbein **ATTRACTIVE** 4565

A very eye appealing sire that puts great shape, muscle expression and style into his sons and daughters. He has a moderate birth weight and ample growth and performance in his calves. His calves have tremendous loin and complete tops and awesome overall balance. To date only 207 progeny are registered in Canada but Attractive's progeny are becoming increasingly more popular and selling for big dollars throughout North America. If you google Attractive and watch the videos posted there you will see a younger and older version. It is really cool to see the younger Attractive video because the apples don't fall far from the tree with this sire. Watching the older Attractive video is exciting as we are able to see what his bull calves will look like in the future. The neat thing is he is not just a bull maker sire, his daughters are equally impressive. Our second crop of Attractive calves have hit the ground and we intend on using him for a third consecutive year. We sold a paternal daughter to Daryl Fought, Cobden, ON at the Touch of Class in December 2019.

Lot 10



Northern View **STELLAR** 79G

Lot 10	2104396	TTF 79G	09/01/2019	Male					
JMB TRACTION 292		SITZ TOP GAME 561X							
SCHIEFELBEIN ATTRACTIVE 4565 1938699		JMB EMULOTA 013							
FROSTY ANSWER 3979		S A V FINAL ANSWER 0035							
WILLOWVIEW PIONEER 6X		FROSTY ELBA LIZZY 1106							
NORTHERN VIEW BELLE 126C 1852079		S A V PIONEER 7301							
NORTHERN VIEW BELLE 102Y		WILLOWVIEW GRAND JUNE 36P							
		BELL NET RETURN 3U							
		WWF AMBUSH BELLE 166P							
EPD	BW	WW	YW	Milk	TM	ACC	BW	Adj. 205	Adj. 365
	2.3	67	123	22	56		82	890	1466

Stellar 79G is a very deep sided, power kinda bull. His overall strength comes in the consistency of his design from front to back. He is a nicely fronted bull with all sorts of volume and capacity leading into more than adequate hip and back end. Loads of power and growth in this bull. This is indicated by his weaning and yearling weights with rank in the top 3% and 1% of the breed respectively. Stellar 79G is backed by the Belle cow family which started Talon's young cow herd. The Belles have been super maternal and produced outstanding seedstock cattle for him. A maternal brother sold to Daryl Carlson of Midale, SK. *Stellar 79G has the birth weight numbers and design that should have him designated as a calving ease sire.*



Northern View Belle 126C
Dam



FTA 96G
Paternal sister we sold to
Daryl Fought at the Touch of Class
in December 2019



2021
Blue Collar
Bulls

Northern View **STELLAR** 97G

Lot 11

Lot 11 2104370 FTA 97G 14/01/2019 Male

Stellar means relating to or have the features of a star performer. 97G is Stellar indeed. As a young calf he always had an awesome top and shape to him. His stylish look and overall smoothness makes him a sale feature to be sure. Stellar 97G possesses moderate birth weight and above average growth. He has gained well since weaning at a rate of over 3 lbs. per day. I really like the fact that this bull is backed by the very impressive Beauty cow family. This guy's granddam is the dam to Lot 3. As you analyze both bulls you will see that they have to have great maternal genetics to create this level of awesomeness. Beauty 96C is fast becoming a real up and comer. She is a young, attractive cow with all the femininity and angularity you want in a cow but the ability to produce power in her calves. Stellar 97G is a bull that you will want to find and carefully take the time to analyze him as an individual, his pedigree and his numbers. This bull is extremely complete in all facets of the herd sire we believe he will become. A beautiful bred maternal sister sold at the Touch of Class this past fall to Freyburn Angus, Oxbow, SK. She has dropped a heifer calf for them and she is doing well.



Lot 11



EPD	BW	WW	YW	Milk	TM
	2.5	58	96	27	56

ACC	BW	Adj. 205	Adj. 365
	88	831	1371

Northern View
Beauty 96C
Dam



FTA 125F
Maternal sister
purchased at
Touch of Class by
Freyburn Angus



JMB TRACTION 292
SCHIEFELBEIN ATTRACTIVE 4565 1938699
FROSTY ANSWER 3979

SITZ TOP GAME 561X
JMB EMULOTA 013
S A V FINAL ANSWER 0035
FROSTY ELBA LIZZY 1106

CONNEALY CONSENSUS 7229
NORTHERN VIEW BEAUTY 96C 1852054
NORTHERN VIEW BEAUTY 94W

CONNEALY CONSENSUS
BLUE LILLY OF CONANGA 16
WINDY WILLOWS ALLIANCE 36S
NORTHERN VIEW BEAUTY 78K

Northern View **STELLAR** 102G

Lot 12

Lot 12 2104376 FTA 102G 17/01/2019 Male

JMB TRACTION 292
SCHIEFELBEIN ATTRACTIVE 4565 1938699
FROSTY ANSWER 3979

S A V FINAL ANSWER 0035
F V ANNIE K FA 130Z 1698298
F V ANNIE K QUEEN 1U

SITZ TOP GAME 561X
JMB EMULOTA 013
S A V FINAL ANSWER 0035
FROSTY ELBA LIZZY 1106
SITZ TRAVELER 8180
S A V EMULOUS 8145
F V 20K KING 308M
F V 184K ANNIE K 2S

EPD	BW	WW	YW	Milk	TM	ACC	BW	Adj. 205	Adj. 365
	1.5	58	101	27	56		85	831	1417

We purchased 102G's dam from Fertile Valley's Opening the Vault Sale. She has been a money maker kinda cow for sure. Annie K 130Z is an angular and feminine cow that has a long life here at Northern View. Each of her calves have been retained as breeding stock. Stellar 102G is no different than any other 130Z progeny. This deep sided, soggy, stylish and stacked bull is built for calving ease. He is a well-balanced bull in his weight gaining at 3.66 lbs. per day from weaning to yearling weights. There are progeny from Annie K 130Z working at Deep Lake Land & Livestock and Landon Bostock's both of Indian Head, SK.

This bull is long, deep and smooth. Recommended for heifers.



Talon Winning Provincial Gold
in Mixed Doubles Badminton



Northern View **STELLAR** 107G



Lot 13 2104379 FTA 107G 21/01/2019 Male

If you are looking for a bull that I would most aptly describe as balanced from front to back and from a weight and number standpoint then here is a very good option for you. Wherever this bull stops and stands, whether it be in the straw pack or the pasture, he impresses me with his depth, broad top and overall mass. This bull is pretty-headed and smooth. Look to this bull to add depth, length and eye appeal to his calves. Jonathon Grunert, Yorkton, SK purchased a maternal brother in the 2018 Blue Collar. We have maternal daughter working for us too. The Jestress cows have been solid for us.

EPD	BW	WW	YW	Milk	TM
	3.8	55	97	24	52

ACC	BW	Adj. 205	Adj. 365
	88	826	1422

JMB TRACTION 292
SCHIEFELBEIN ATTRACTIVE 4565 1938699
FROSTY ANSWER 3979

SITZ TOP GAME 561X
JMB EMULOTA 013
S A V FINAL ANSWER 0035
FROSTY ELBA LIZZY 1106

BELL NET RETURN 3U
NORTHERN VIEW JESTRESS 100Y 1623556
NORTHERN VIEW JESTRESS 74K

S A V NET WORTH 4200
BELL MS PRIDE 16L
STEVENSON FORTUNE 425C
CRESCENT CREEK JESTRESS 44G



116B
Maternal sister to 107G
is working well in our herd.



Boyd **CARTWRIGHT** 3303

We selected Cartwright to AI calves to because he is quite royally bred, he has very good eye appeal, tremendous depth of body, and is in the top 1% of the Angus breed for weaning weight, yearling weight and scrotal development. There are only 27 of his progeny registered in Canada so the matings here are quite unique and interesting for any cattle producer. This bull is one we have used again and have calves on the ground. Very pleased with his results.



Northern View **BONANZA** 99G

Lot 14 2104373 FTA 99G 15/01/2019 Male

CONNEALY CAPITALIST 028
BOYD CARTWRIGHT 3303 1823025
S A V ABIGALE 8076

NORTHERN VIEW UPWARD 93Y
NORTHERN VIEW ATALANTA 72A 1744120
NORTHERN VIEW ATALANTA 88X

S A V FINAL ANSWER 0035
PRIDES PITA OF CONANGA 8821
S A V BISMARCK 5682
S A V ABIGALE 6575
SITZ UPWARD 307R
SOO LINE DUCHESS 7266
BELL NET RETURN 3U
NORTHERN VIEW ATALANTA 78T

EPD	BW	WW	YW	Milk	TM	ACC	BW	Adj. 205	Adj. 365
	2.6	67	122	27	61		86	911	1480

Bonanza 99G is a deep and powerful bull that has a ton of style. This bull may be the longest spined bull you will come across this spring. If you are looking to put more middle and length into your cows this is the bull for you. 99G has a very nice set of numbers when it comes to performance with his weaning and yearling weights registering in the top 3% and 1%, respectively, of the breed and his birth weights are very usable for most breeding programs. His full brother was in the sale last year and was extremely well received. 99G is every bit as good as his full brother. 99G's weaning and yearling weights actually exceed his full brother female that is structurally very sound. Bonanza 99G's granddam, 88X, has been designated

from last year. He comes from an excellent cow family. His mother, 72A, is a deep, big volume elite dam by the Canadian Angus Association. Excellent opportunity to own a bull that has the genes to sire fantastic replacement females. An astute cattleman once told me; you breed awesome to awesome you should get awesome and here you have it. 88X has produced a Connealy Consensus son, 108D, which we own with Venture Farms in Roblin. His calves are awesome and are represented as Lots 5, 6 and 7. Two maternal brothers have sold in the Blue Collar to Dale Minhinick, Invermay, SK. Last year a full brother sold to Eastpoint Cattle Co., Shayne and Erin Sawley, Melville, SK.



Northern View Atalanta 72A
Dam



FTA 78F
Full brother sold to
Eastpoint Cattle Co.,
Shayne & Erin Sawley, Melville, SK
at the 2019 Blue Collar

Ellingson **HOMEGROWN** 6035



Northern View **HOMEGROWN** 82G

Lot 15

Lot 15 2104398 AJF 82G 09/01/2019 Male

CTS REMEDY 1T01
ELLINGSON HOMEGROWN 6035 2013648
 EA BLANCHE 4137

CONNEALY IMPRINT 8317
NORTHERN VIEW ROSEBUD 73D 1901444
 PRAIRIELANE 8127 ROSEBUD 103

CONNEALY THUNDER
 CTS 7V03 BELLEMERE MAID 9T02
 ELLINGSON FORMAT 2205
 EA BLANCHE 1137
 CONNEALY IMPRESSION
 ELLINA OF CONANGA 868 7127
 PRAIRIELANE 5057-8127
 PRAIRIELANE 3011 ROSEBUD 8028

EPD	BW	WW	YW	Milk	TM	ACC	BW	Adj. 205	Adj. 365
	3.5	57	103	24	53		90	850	1379



This is a bull that is simply sound. He has grown and matured well and is performing well with the other bulls in the pen. He has gained 3.31 lbs./day. Homegrown 82G comes from a very good, young Imprint daughter whose first calf we retained as a replacement but sadly this bred heifer died in the pasture this past summer from fog fever. This lineage of the Rosebud cows is relatively new for us but looks promising in what they will produce. Homegrown 82G has a good temperament and an excellent hair coat.

Northern View **FLYTRAVELER** 130G

Lot 16

Lot 16 2104386 FTA 130G 21/02/2019 Male

SKYBROOK NEW FLY 29Z
NORTHERN VIEW ROCK STAR 10D 1936045
 NORTHERN VIEW BLACKCAP 35W

R B TOUR OF DUTY 177
NORTHERN VIEW RUTH 109D 1901476
 NORTHERN VIEW RUTH 84S

SKYBROOK FLY TRAVELER 8X
 SKYBROOK GIRL 9W
 WINDY WILLOWS ALLIANCE 36S
 NORTHERN VIEW BLACKCAP 11P
 WERNER WAR PARTY 2417
 B A LADY 6807 305
 HYLINE RIGHT WAY 781
 CRESCENT CREEK RUTH 6F

EPD	BW	WW	YW	Milk	TM	ACC	BW	Adj. 205	Adj. 365
	3.6	42	76	28	49		85	843	1393



Rock Star 130G is backed by our consistently structurally, sound and productive Ruth cow family. They say cows can help sell their bull calves and this bull is no exception to that rule. His dam, 109D, is a fantastic young cow that kicked out a Scheifelbein Effective daughter, 70F. 70F has had her first calf here and she is fantastic. A stunning udder, perfect feet and flawless body design. Ruths are sprinkled throughout the pedigrees in many of our cattle. This is an influence that you simply can't overlook. Rock Star 130G is loaded with hair and has the power and mass to add pounds to his calves come sale day. Look to him to produce great quality replacement females with the maternal strength on the top and bottom of his pedigree. Tremendous cow bull potential here.

Northern View Ruth 84S
 Granddam
 Still producing in our herd



Crew Fitting at Brandon



Lot 17



Northern View Tibbie 78D
Dam

Northern View **ROCK STAR** 136G

Lot 17	2104387	FTA 136G	04/03/2019	Male
SKYEBROOK NEW FLY 29Z		SKYEBROOK FLY TRAVELER 8X		
NORTHERN VIEW ROCK STAR 10D 1936045		SKYEBROOK GIRL 9W		
NORTHERN VIEW BLACKCAP 35W		WINDY WILLOWS ALLIANCE 36S		
VISION UNANIMOUS 1418		NORTHERN VIEW BLACKCAP 11P		
NORTHERN VIEW TIBBIE 78D 1901447		VISIONTOPLINE ROYAL STOCKMAN		
NORTHERN VIEW TIBBIE 99X		VISION EDELLA 66S		
		WINDY WILLOWS ALLIANCE 36S		
		NORTHERN VIEW TIBBIE 81T		

EPD	BW	WW	YW	Milk	TM	ACC	BW	Adj. 205	Adj. 365
	4.4	35	62	23	41		85	818	1111

Rock Star 136G is a hairy, March born bull that will add depth and balance to his calves as well as increase their volume. He is out of Tibbie 78D, a young Unanimous daughter that we are excited about what the future holds for her. Maternally the Tibbies have been awesome. This bull will produce excellent females. A maternal sister sold in the 2018 Touch of Class Sale to Calvin and Hayley Powell, Youngstown, AB.

Lot 18



Northern View **CLEARVIEW** 140G

Lot 18	2104402	FTA 140G	16/03/2019	Male
JINDRA DOUBLE VISION		CONNEALY REFLECTION		
SKYEBROOK VISION 6C 1849913		HOFF RACHEL 8312 40S		
SKYEBROOK PRIDE DOLLY 21X		SKYEBROOK RIGHT TIME		
B P F SPECIAL FOCUS 504		ROYAL PRIDE DOLLY 75T		
NORTHERN VIEW TIBBIE 73E 1975210		MYTTY IN FOCUS		
NORTHERN VIEW TIBBIE 88C		B P F BLACK CASH 341		
		SANDPOINT J EDGAR HOOVER		
		NORTHERN VIEW TIBBIE 72Y		

EPD	BW	WW	YW	Milk	TM	ACC	BW	Adj. 205	Adj. 365
	-0.3	54	91	27	54		70	958	1201

I believe the sandman can come every night when you are calving out heifers from this bull. He has above average growth built into a calving ease package. This calving ease, elite pedigree has Vision 6C, a sire we used successfully on heifers, Special Focus and J Edgar Hoover. With a pedigree loaded with this kinda calving ease you may want to have your catcher's mitt on when your heifers are calving. Tibbie 73E is a stunning three-year-old that will make you like this bull even more. She is a maternal sister to the Lot 23 bull. Clearview 140G is a long bodied, smooth shouldered and small headed bull. Perfect for calving ease.

This bull comes highly recommended for calving ease.



Reserve Champion
Pen of Bulls
Harvest Showdown
2019

Northern View **BULL'S EYE** 92C

Grand sire to Lot 19 as a yearling.



Northern View **BULL'S EYE** 141G

Lot 19



Lot 19	2115390	FTA 141G	16/03/2019	Male					
NORTHERN VIEW BULL'S EYE 92C		B P F SPECIAL FOCUS 504							
COR VET MILKDUD 21E 1983935		NORTHERN VIEW BEAUTY 91A							
COR VET LEONA 18B		S A V HARVESTOR 0338							
S A V FINAL ANSWER 0035		COR VET LEONA 34W							
F V QUEEN FA 341Z 1694332		SITZ TRAVELER 8180							
F V QUEEN IF 315X		S A V EMULOUS 8145							
		MYTTY IN FOCUS							
		F V 32F QUEEN 308L							
EPD	BW	WW	YW	Milk	TM	ACC	BW	Adj. 205	Adj. 365
	-1.8	54	92	19	46		70	808	1195

This bull, 'Timmy' as the kids call him, has ¾ of his pedigree targeting rock star calving ease. His dam is a structurally sound, highly productive and aesthetically pleasing daughter out of none other than the breed legend, Final Answer.

His grandsire is, Bull's Eye 92C who was the high selling bull in the Blue Collar 2016 to Corvet Cattle Co. Cory, like many other breeders, loved this bull's length, power and calving ease. Cory has indicated that 92C has not disappointed and met his expectations. We believe that Timmy will follow in these footsteps. Timmy is very gentle in his nature, has a great hair coat and very moderate in his make up. The shape of this bull is perfect for making steers. If you had an entire pen of steers that looked like Timmy, you would certainly have 4-H members knocking on your door to purchase show steers. I believe Timmy will be the type of bull that can be used exclusively as a heifer bull for many years.

He is halter broke and highly recommended for heifers with a -1.8 birth weight EPD and a 70 lb. actual birth weight.

Lot 19



F V Queen
FA 341Z
Dam



FTA 141G
at Brandon



EXAR **RESISTOL** 3710B

A couple years ago we were looking for a bit of an outcross sire who put it all together and we decided to use Resistol. His calving ease coupled with his performance were a major drawing card for us. He passes on his increased middle and mass to his progeny. Resistol's daughters are proving to be sound and productive with excellent udders. We have four daughters we are excited to be breeding this spring. They look awesome. His bulls are to have added fertility and scrotal development to them.



Northern View **NITROUS** 75G

Lot 20



Lot 20	2104359	FTA 75G	02/01/2019	Male					
A A R TEN X 7008 S A		MYTTY IN FOCUS							
EXAR RESISTOL 3710B 1891867		A A R LADY KELTON 5551							
SITZ HENRIETTA PRIDE 643T		CONNEALY ONWARD							
B P F SPECIAL FOCUS 504		SITZ HENRIETTA PRIDE 81M							
NORTHERN VIEW DUCHESS 85C 1852043		MYTTY IN FOCUS							
NORTHERN VIEW DUCHESS 84A		B P F BLACK CASH 341							
		WILL ROLE MODEL							
		SOO LINE DUCHESS 7266							
EPD	BW	WW	YW	Milk	TM	ACC	BW	Adj. 205	Adj. 365
	0.2	51	96	25	51		75	831	1281

Nitrous 75G is a deep, long sided bull with smooth shoulders, sleek head and the structure to calve out on heifers. He has adequate performance to him which should produce calves that aren't simply throw aways from a heifer. His dam, 85C, is a very good, young Special Focus daughter. The Special Focus daughters we have working here have been simply fantastic. Duchess 85C's bull in last year's sale sold to Colin Graham, Rocanville, SK.

Nitrous 75G comes recommended for heifers.

Lot 20



Northern View
Duchess 85C
Dam



Northern View **NITROUS** 84G



Lot 21 2104365 FTA 84G 08/01/2019 Male

Well it is truly difficult to know where to start when it comes to Nitrous 84G. Does one discuss him or his dam first? Nitrous 84G has ridiculous calving to growth rates. He started off at 80 lbs. out of a 13-year-old cow. Then grew to a weaning weight of over 900 lbs. and now has a yearling weight of 1470 lbs. His weight comes from his great length and depth. Nitrous 84G has tremendous temperament and a pail full of testicles. He is halter broke and a member of our 2019 Champion Angus and Overall Reserve Champion Pen of Bulls at Harvest Showdown in Yorkton. Ruth 84S is an Elite Dam with 12 calves and 23 grandcalves. She is in the top 2% of the breed for milk. She has great feet and udder too. She has three daughters working here. Two are the dams to Lots 26 and 16 in the catalogue, as well as three great granddaughters working in our herd. All have awesome feet, great udders, structure that leads to longevity and ultimately produce a great calf each year. J Square S Angus has a daughter, Ruth 82Z, in their flush program too. J Square and ourselves flushed 84S this past spring too. This bull is one that you will for sure want to keep replacements from. Any time you can get genetics from an elite dam you will want to

EPD	BW	WW	YW	Milk	TM
	1.8	56	106	27	55

ACC	BW	Adj. 205	Adj. 365
	80	912	1470

snap them up. This bull is a powerful rascal but has the numbers, weights and design to calve out very nicely. For strong, tried and true genetics seek out Nitrous 84G to give your breeding program some boost.

This bull has calving ease numbers, but I would field test him on second calvers or larger heifers first

A A R TEN X 7008 S A
EXAR RESISTOL 3710B 1891867
SITZ HENRIETTA PRIDE 643T

MYTTY IN FOCUS
A A R LADY KELTON 5551
CONNELLY ONWARD
SITZ HENRIETTA PRIDE 81M

HYLINE RIGHT WAY 781
NORTHERN VIEW RUTH 84S 1319962
CRESCENT CREEK RUTH 6F

HYLINE RIGHT TIME 338
HYLINE ELLEN 86
WHITESTONE FLY TRAVELER 3006
CRESCENT CREEK RUTH 21A



88A
Maternal
Sister



70Y
Maternal
Sister



Northern View
Ruth 84S
Dam

Northern View **NITROUS** 95G

Lot 22 2104399 TTF 95G 13/01/2019 Male

This guy is a big burly rascal. Nitrous 95G is big barreled but has a great deal of smoothness in the front end. Overall this bull is very stylish in his make up and adds performance in his weights with calving ease numbers. His dam, Belle 111C, is an excellent footed and uddered J Edgar Hoover daughter. The Belles are Talon's first cow family and have done very well for him. This bull is in the top 10% of the breed in all major EPD categories. His calves should be at the top end of your pen come sale time. Nitrous 95G is a very mild mannered bull. He is halter broke and a member of our 2019 Champion Angus and Overall Reserve Champion Pen of Bulls at Harvest Showdown in Yorkton. A maternal brother sold to Willy Zuchkin, Foam Lake in last year's Blue Collar.

This bull should work on heifers, but I would field test him on second calvers or larger heifers first.

EPD	BW	WW	YW	Milk	TM
	0.0	59	111	22	52

ACC	BW	Adj. 205	Adj. 365
	72	911	1476

A A R TEN X 7008 S A
EXAR RESISTOL 3710B 1891867
SITZ HENRIETTA PRIDE 643T

MYTTY IN FOCUS
A A R LADY KELTON 5551
CONNELLY ONWARD
SITZ HENRIETTA PRIDE 81M

SANDPOINT J EDGAR HOOVER
NORTHERN VIEW BELLE 111C 1852067
NORTHERN VIEW BELLE 75A

HOOVER DAM
SANDPOINT PROUD FORMERA 0128
CONNELLY THUNDER
NORTHERN VIEW BELLE 102Y



Northern View
Belle 111C
Dam



TTF 95G
at Brandon

NORTHERN VIEW ANGUS

Northern View **NITROUS** 106G

Lot 23

Lot 23 2104378 FTA 106G 20/01/2019 Male

Well here is absolutely one of the smoothest, deepest and stylish bulls you will find. This bull has calving ease and what I would consider awesome gain at 3.7 lbs. per day. Nitrous 106G carries his overall mass and smoothness from front to back. This bull's feet have good heel and structure, his legs are well structured and his overall phenotype is very appealing. Beauty 88C is an awesome young J Edgar Hoover daughter. She has two daughters working in our herd with one being the dam to Lot 18. Beauty 88C has passed all her angularity and feminine attractiveness and her structure to her daughters. I am not sure she will have a daughter leave our farm. Nitrous 106G has cool genes in his pedigree with the first two Angus cows we have purchased in Ruth 6F and Beauty 118E back in his pedigree. Genetics which have withstood the test of time at our place. I truly believe when you see this bull you will fall in love with him.

It is my recommendation that you buy this bull as a moderate calving ease bull to try on larger heifers and second calvers before going totally for heifer use.



EPD	BW	WW	YW	Milk	TM
	2.1	54	105	24	51

ACC	BW	Adj. 205	Adj. 365
	85	857	1449

A A R TEN X 7008 S A
EXAR RESISTOL 3710B 1891867
 SITZ HENRIETTA PRIDE 643T

MYTTY IN FOCUS
 A A R LADY KELTON 5551
 CONNEALY ONWARD
 SITZ HENRIETTA PRIDE 81M

SANDPOINT J EDGAR HOOVER
NORTHERN VIEW TIBBIE 88C 1852046
 NORTHERN VIEW TIBBIE 72Y

HOOVER DAM
 SANDPOINT PROUD FORMERA 0128
 MOHNEN DYNAMITE 1356
 NORTHERN VIEW TIBBIE 81T

Northern View **NITROUS** 112G

Lot 24

Lot 24 2104382 FTA 112G 01/02/2019 Male

A A R TEN X 7008 S A
EXAR RESISTOL 3710B 1891867
 SITZ HENRIETTA PRIDE 643T

CONNEALY THUNDER
NORTHERN VIEW TIBBIE 81Z 1699923
 NORTHERN VIEW TIBBIE 81T

MYTTY IN FOCUS
 A A R LADY KELTON 5551
 CONNEALY ONWARD
 SITZ HENRIETTA PRIDE 81M
 BALDRIDGE KABOOM K243 KCF
 PARKA OF CONANGA 241
 NORTHERN VIEW QUANTUM 86P
 NORTHERN VIEW TIBBIE 71R

EPD	BW	WW	YW	Milk	TM	ACC	BW	Adj. 205	Adj. 365
	-1.4	46	92	27	50		70	884	1363

Here is a calving ease deal for sure. This bull is long spined and sleek, built perfectly for calving out heifers. Despite his calving ease potential, he and his dam, Tibbie 81Z, worked hard to generate solid weights as well. Nitrous 112G is in the top 3% for calving ease with a -1.4 BW EPD and a 70 lb. BW. This bull is backed by his Thunder sired dam. You have heard me speak extremely positive about these Thunder daughters having great udders, deep bodies, superior structure but also raise a great calf. Tibbie 81Z has produced bulls that have gone through the Blue Collar to Chris Schwartz, Runnymede, SK and Iron Saddle Ranch, Lemberg, SK in 2018.

This bull comes highly recommended for heifers.



109E
 Maternal brother sold to Iron Saddle Ranch in Blue Collar



Northern View **NITROUS** 113G

Lot 25 2104383 FTA 113G 03/02/2019 Male

If you want a bull from a sire with a proven pedigree and an awesome foundational cow, then here is your opportunity. When you breed a great sire and a gorgeous cow you should get something pretty darn nice. Nitrous 113Z is an extremely powerful, phenotypical bull. He has great hair. I love this bull's shape and style for sure. His mother is a deep, attractive and structurally sound female. We have two daughters in our herd. Lucy 87X's first calf sold to Spilchuk Farms. They have had numerous daughters from him in their herd and are very pleased with this bull's heifers and steers. His daughters are producing very well for them. 87X is out of a cow that we are proud to show anyone who comes by the farm. Nitrous 113Z has a 75 lb. birth weight and very usable +0.7 Birth Weight EPD. Add in the very very nice weaning and yearling weights and you have a pretty desirable bull. Lucy 87X's 2018 Blue Collar offering sold to Ross Dublinica, Spruce Acres Angus, Foam Lake.

This bull is one I would recommend on heifers with calving ease in his numbers, in his design and on the top and bottom of his pedigree.

EPD	BW	WW	YW	Milk	TM
	0.7	57	112	19	48

ACC	BW	Adj. 205	Adj. 365
	75	924	1434



A A R TEN X 7008 S A
EXAR RESISTOL 3710B 1891867
SITZ HENRIETTA PRIDE 643T

MYTTY IN FOCUS
A A R LADY KELTON 5551
CONNEALY ONWARD
SITZ HENRIETTA PRIDE 81M

TC ABERDEEN 759
NORTHERN VIEW LUCY 87X 1552552
NORTHERN VIEW LUCY 72J

C R A BEXTOR 872 5205 608
TC BLACKBIRD 4034
BELL STOCKADE 7G
BELL BLACK LUCY 5G



Northern View Lucy 87X
Dam

Lot 26



Northern View **NITROUS** 120G

Lot 26 2104184 FTA 120G 08/02/2019 Male

A A R TEN X 7008 S A
EXAR RESISTOL 3710B 1891867
SITZ HENRIETTA PRIDE 643T

CONNEALY THUNDER
NORTHERN VIEW RUTH 88A 1744132
NORTHERN VIEW RUTH 84S

MYTTY IN FOCUS
A A R LADY KELTON 5551
CONNEALY ONWARD
SITZ HENRIETTA PRIDE 81M
BALDRIDGE KABOOM K243 KCF
PARKA OF CONANGA 241
HYLINE RIGHT WAY 781
CRESCENT CREEK RUTH 6F

EPD	BW	WW	YW	Milk	TM	ACC	BW	Adj. 205	Adj. 365
	1.1	49	100	26	51		82	808	1334

Here is a bull that is moderate and balanced in every way, from his confirmation to his numerical data. He has a +1.1 birth EPD and an 82 lb. birth weight. Nitrous 120G is smooth and long bodied with excellent head and shoulders for calving ease. His dam, Ruth 88A, is a stunning cow who we simply can't wait to see what she produces each year. Jonathan Grunert, Yorkton, SK and Venture Farms, Roblin, MB both have maternal brothers to Nitrous 120G. Nitrous 120G should be one that will work on heifers based on his make up and numbers.

Recommended for heifers.



Astute Cattleman
Josh Shynkaruk
Checking Out Some
Cows Summer 2019

PARKWOOD FARM

Our family would like to welcome you to the 14th Annual Blue Collar Bull Sale.

First, we would like to thank our past and present customers. You are the reason we continue to work hard to offer these bulls and we are proud to see our bulls working on your farms!

We have on offer a wide variety of genetics, including DL Dually, Cowboy Up, Payweight, Element, Topshelf, President, Sensation, Ambush and Lute. We are continually searching for new sire groups that will provide moderate birth weights as well as growth to the weaning and yearling stages. We also run a small feedlot operation, so we understand the need to have performance bred into these calves for when they go to market.

These bulls are on a full vaccination program and our feed nutritionist works with us to test our feed to ensure the bulls are getting the nutrition required to develop into mature bulls.

We stand behind our bulls 100% and are proud of our offering. We will work with our customers to ensure their breeding needs are met should any concerns arise.

We would also like to thank our family and friends who help us sale day in the barns and in the office! We appreciate all of your help! If you wish to view the bulls prior to the sale, the farm is always open and you are more than welcome to stop by.



Lot 27



Parkwood **DUALY** 69G

Lot 27	2095107	WHBA 69G	16/01/2019	Male					
DL SONIC 444		KG SOLUTION 0018							
DL DUALY 2072533		DL BARBARA 792							
DL INCENTIVE 2103		DL INCENTIVE 22E							
		DL KARAMA 39							
SITZ UPWARD 307R		CONNEALY ONWARD							
PARKWOOD TIBBIE 11Z 1705180		SITZ HENRIETTA PRIDE 81M							
MVF TIBBIE 813P		GDAR SVF TRAVELER 234D							
		MVF TIBBIE 52F							
EPD	BW	WW	YW	Milk	TM	ACC	BW	Adj. 205	Adj. 365
	3.2	69	128	21	56		91	759	1383



DL **DUALY**

We are extremely excited to lead off our group with this off the charts curve bender. We selected DL Dually because he was in the top 1% of weaning and yearling weights and top 25% calving ease. We only have a small sample size this year with a paternal brother being retained for our own in herd use and two paternal sisters also being retained in our herd. Dually is no longer available and we were able to get our hands on some more semen and are flushing and AI'ing to him again this season. 69G, in our minds, is as complete a bull as you can get, with the frame, capacity and overall eye appeal to become a herd sire. His dam, 11Z, is a powerhouse cow and has been a part of our egg donor program. She has produced seven progeny to date including two sons and one daughter being sold in previous sales.

Lot 28



Cowboy Up was the number one registered progeny in 2019 in the AAA. We sought out his semen as soon as it became available for sale in Canada. These two flush brothers are thick, big nuted, big bellied with lots of hair and are structurally correct. 2Z is a moderately framed, thick topped female with three sons in the sale, two heifers being retained, three daughters working in the herd as well as three calves being born this year. She is a true cow factory.

Parkwood **COWBOY UP** 9G

Lot 28	2111879	WHBA 9G	03/01/2019	Male
--------	---------	---------	------------	------

EPD	BW	WW	YW	Milk	TM	ACC	BW	Adj. 205	Adj. 365
2.0	65	119	15	47	92	687	1181		

HA OUTSIDE 3008
HA COWBOY UP 5405 1937042
 HA BLACKCAP LADY 1602

KG SOLUTION 0018
 HA EVER LADY 1575
 SITZ UPWARD 307R
 HA BLACKCAP LADY 5515

MVF UPWARD 236X
PARKWOOD HEATHER 2Z 1681019
 PARKWOOD HEATHER 53X

SITZ UPWARD 307R
 MVF ELLEN 112S
 CRESCENT CREEK SUPER X 91S
 PARKWOOD HEATHER 130U

Lot 29



HA **COWBOY UP** 5405



Parkwood **COWBOY UP** 21G

Lot 29	2103701	BJA 21G	05/01/2019	Male
--------	---------	---------	------------	------

EPD	BW	WW	YW	Milk	TM	ACC	BW	Adj. 205	Adj. 365
2.0	65	119	15	47	91	668	1240		

HA OUTSIDE 3008
HA COWBOY UP 5405 1937042
 HA BLACKCAP LADY 1602

KG SOLUTION 0018
 HA EVER LADY 1575
 SITZ UPWARD 307R
 HA BLACKCAP LADY 5515

MVF UPWARD 236X
PARKWOOD HEATHER 2Z 1681019
 PARKWOOD HEATHER 53X

SITZ UPWARD 307R
 MVF ELLEN 112S
 CRESCENT CREEK SUPER X 91S
 PARKWOOD HEATHER 130U

Parkwood **COWBOY UP** 30G

Lot 30



Lot 30	2095294	WHBA 30G	06/01/2019	Male
HA OUTSIDE 3008		KG SOLUTION 0018		
HA COWBOY UP 5405 1937042		HA EVER LADY 1575		
HA BLACKCAP LADY 1602		SITZ UPWARD 307R		
		HA BLACKCAP LADY 5515		
S A V LEWIS 8373		S A V 8180 TRAVELER 004		
PARKWOOD HEATHER JOY 47X 1562049		S A V BESSIE HEIRESS 1184		
PARKWOOD HEATHER JOY 71S		MVF VRD DATELINE 5M		
		PARKWOOD HEATHER JOY 77N		

EPD	BW	WW	YW	Milk	TM	ACC	BW	Adj. 205	Adj. 365
	2.8	54	96	15	42		87	741	1219

A young sire with loads of capacity made thick from end to end. He had a moderate birth weight with extra growth and performance. 47X is a Lewis daughter from one of our favourite female producing herd sires.

Parkwood **COWBOY UP** 52G

Lot 31



Lot 31	2095299	WHBA 52G	10/01/2019	Male
HA OUTSIDE 3008		KG SOLUTION 0018		
HA COWBOY UP 5405 1937042		HA EVER LADY 1575		
HA BLACKCAP LADY 1602		SITZ UPWARD 307R		
		HA BLACKCAP LADY 5515		
CRESCENT CREEK SUPER X 91S		DWAJO SUPER X 104N		
PARKWOOD QUEEN RUTH 32X 1562045		CRESCENT CREEK ROSEBUD 97P		
PARKWOOD QUEEN RUTH 167U		S A V FINAL ANSWER 0035		
		PARKWOOD QUEEN RUTH 153S		

EPD	BW	WW	YW	Milk	TM	ACC	BW	Adj. 205	Adj. 365
	3.4	65	117	13	46		89	726	1280

52G has the muscle shape, thickness and volume of an ideal beef producer that will add power and punch to his calves. His 32X dam is a powerfully framed cow that has been weaning calves that straight up perform.

Parkwood **COWBOY UP** 63G

Lot 32



Lot 32	2095302	WHBA 63G	14/01/2019	Male
HA OUTSIDE 3008		KG SOLUTION 0018		
HA COWBOY UP 5405 1937042		HA EVER LADY 1575		
HA BLACKCAP LADY 1602		SITZ UPWARD 307R		
		HA BLACKCAP LADY 5515		
S A V LEWIS 8373		S A V 8180 TRAVELER 004		
PARKWOOD WILLA QUEEN 120A 1735868		S A V BESSIE HEIRESS 1184		
PARKWOOD WILLA QUEEN 69W		MVF VRD DATELINE 5M		
		WILLA QUEEN OF PARKWOOD 6G		

EPD	BW	WW	YW	Milk	TM	ACC	BW	Adj. 205	Adj. 365
	3.5	65	119	16	49		91	694	1288

Cowboy Up is proving you can breed thick, muscular, efficient and easy fleshing cattle. 63G is very correct with a thick top and quarter. A maternal brother has sold at a previous Blue Collar Bull Sale.

Parkwood **COWBOY UP** 64G



Lot 33	2095301	WHBA 64G	13/01/2019	Male					
HA OUTSIDE 3008 HA COWBOY UP 5405 1937042 HA BLACKCAP LADY 1602		KG SOLUTION 0018 HA EVER LADY 1575 SITZ UPWARD 307R HA BLACKCAP LADY 5515 S A V 8180 TRAVELER 004 S A V 004 DENSITY 4336 PARKWOOD WILLA QUEEN 204W 1505947 WILLA QUEEN OF PARKWOOD 42M							
EPD	BW	WW	YW	Milk	TM	ACC	BW	Adj. 205	Adj. 365
	1.8	50	88	17	42		83	704	1188

The consistency on the Cowboy Up calves is second to none. 64G is moderately framed with a broad back and is as thick as they come. His Elite, Density dam has produced numerous sons and daughters that have sold at previous Blue Collar sales.



8G has abundant thickness, muscle, volume and fleshing ability. This cow bull packs some serious muscle and performance with weaning weight of 994 and a yearling weight of 1365. 49W is a deep bodied dam that comes from a strong maternal line who has progeny that have highlighted past Blue Collar Bull sales.



S A V **REIGN** 6845

Parkwood **REIGN** 8G

Lot 34	2093721	WHBS 8G	03/01/2019	Male
---------------	---------	---------	------------	------

EPD	BW	WW	YW	Milk	TM	ACC	BW	Adj. 205	Adj. 365
	3.5	72	116	25	61		92	844	1347

COLEMAN CHARLO 0256
S A V REIGN 6845 1995243
 S A V BLACKCAP MAY 4136

O C C PAXTON 730P
 BOHI ABIGALE 6014
 S A V 8180 TRAVELER 004
 S A V MAY 2397

MVF VRD DATELINE 5M
PARKWOOD PROUD LASSIE 49W 1505487
 OTA SCHROEDER 132L

VERMILION DATELINE 7078
 MVF LADY ANNE 30F
 V A F HAPPY OSCAR 57
 SCHROEDER PROUD LASSIE



Macy at 4-H



Katie & Landon at 4-H

Lot 35

16G has herd bull written all over him with massive volume, dimension and tonnes of performance. With a weaning weight of 878 lbs. and a 365 weight of 1345 lbs., 16G will sire easy fleshing daughters and steers that weigh heavy.



Parkwood **REIGN** 16G

Lot 35	2093712	WHBA 16G	05/01/2019	Male	EPD	BW	WW	YW	Milk	TM	ACC	BW	Adj. 205	Adj. 365					
					2.0	63	113	25	57		90	752	1345						
COLEMAN CHARLO 0256 S A V REIGN 6845 1995243 S A V BLACKCAP MAY 4136					O C C PAXTON 730P BOHI ABIGALE 6014 S A V 8180 TRAVELER 004 S A V MAY 2397					MVF UPWARD 236X PARKWOOD JOYCE 139A 1735880 PARKWOOD JOYCE 28W					SITZ UPWARD 307R MVF ELLEN 112S S A V NET WORTH 4200 JOYCE OF PARKWOOD 13M				

Lot 36



Performance speaks loudly here, possessing massive volume, muscle and pounds. He earned a 205 day index of 114 and a 365 index of 122, with a 4.09 lbs./day gain. His Elite, heavy milking, productive dam has sons and daughters sell in previous Blue Collar sales.

Parkwood **REIGN** 39G

Lot 36	2094901	WHBS 39G	07/01/2019	Male	EPD	BW	WW	YW	Milk	TM	ACC	BW	Adj. 205	Adj. 365					
					4.3	72	128	26	62		96	796	1451						
COLEMAN CHARLO 0256 S A V REIGN 6845 1995243 S A V BLACKCAP MAY 4136					O C C PAXTON 730P BOHI ABIGALE 6014 S A V 8180 TRAVELER 004 S A V MAY 2397					IDEAL 4355 OF 0T26 2440 PARKWOOD EPPONIA 14Y 1641300 EPPONIA OF PARKWOOD 29M					S S OBJECTIVE T510 OT26 IDEAL 2440 OF 7407 7275 CRESCENT CREEK LEGEND 148G EPPONIA OF PARKWOOD 1G				

Lot 37



We selected Payout for his ability to sire calves with moderate birth weight and explosive growth. With a 205 weight of 796 and a 365 day weight of 1405, this will appeal to cattlemen that want calves to perform.

Parkwood **PAYOUT** 84G

Lot 37	2095120	WHBA 84G	18/01/2019	Male
--------	---------	----------	------------	------

EPD	BW	WW	YW	Milk	TM	ACC	BW	Adj. 205	Adj. 365
	3.0	71	130	22	58		90	796	1405

RING CREEK BIG PAYOUT 41Z
MVF PAYOUT 30B 1811668
 MVF HI LITE 456W

CONNELLY CONSENSUS 7229
 LADY OF RING CREEK 10W
 NORSEMAN FRONTIER 2'07
 MVF HI LITE 20P

MVF UPWARD 236X
PARKWOOD HEATHER 2Z 1681019
 PARKWOOD HEATHER 53X

SITZ UPWARD 307R
 MVF ELLEN 112S
 CRESCENT CREEK SUPER X 91S
 PARKWOOD HEATHER 130U

Lot 38



Parkwood **PAYWEIGHT** 13G

Lot 38	2125757	BJA 13G	04/01/2019	Male
--------	---------	---------	------------	------

BASIN PAYWEIGHT 006S
BASIN PAYWEIGHT 1682 2010588
 21AR O LASS 7017

MVF VRD DATELINE 5M
PARKWOOD ROSEBUD 65X 1561827
 CRESCENT CREEK ROSEBUD 136S

VERMILION PAYWEIGHT J847
 BASIN LUCY 3829
 HARB PENDLETON 765 J H
 21AR O LASS F24A
 VERMILION DATELINE 7078
 MVF LADY ANNE 30F
 KBJ HOOSIER 25P
 CRESCENT CREEK BARANDA 184N

EPD	BW	WW	YW	Milk	TM	ACC	BW	Adj. 205	Adj. 365
	3.1	56	99	24	52		92	695	1213

1682 is a true type changer for adding muscle, substance and fleshing ability. He is number two for Maternal Index and is in the top 4% for feed efficiency and total profit. 13G is loaded with meat and muscle from front to back and is powerfully built through his rump and hind quarter.



Basin **PAYWEIGHT** 1682



Champion Pen of Three Futurity Heifers at Harvest Showdown

Parkwood **PAYWEIGHT** 15G

Lot 39

Lot 39	2093711	WHBA 15G	05/01/2019	Male					
BASIN PAYWEIGHT 006S BASIN PAYWEIGHT 1682 2010588 21AR O LASS 7017		VERMILION PAYWEIGHT J847 BASIN LUCY 3829 HARB PENDLETON 765 J H 21AR O LASS F24A7 S A V BULLET 0473 JL RALLEY MISSIE 8202 MVF VRD DATELINE 5M WILLIE'S QUEEN OF PARKWOOD 24L							
JL AMMO 2082 PARKWOOD QUEEN 41B 1792422 PARKWOOD QUEEN 35X									
EPD	BW	WW	YW	Milk	TM	ACC	BW	Adj. 205	Adj. 365
	1.3	53	97	25	52		84	662	1256



15G is a typical Payweight son who is a big bodied cow bull with worlds of volume. He is stout made with ample muscle. His dam displays an impeccable udder quality and an abundance of milk.

Parkwood **PAYWEIGHT** 22G

Lot 40

Lot 40	2093714	WHBA 22G	05/01/2019	Male					
BASIN PAYWEIGHT 006S BASIN PAYWEIGHT 1682 2010588 21AR O LASS 7017		VERMILION PAYWEIGHT J847 BASIN LUCY 3829 HARB PENDLETON 765 J H 21AR O LASS F24A7 CONNEALY IMPRESSION ELLINA OF CONANGA 868 7127 WINDY WILLOWS STOCKADE 91G WILLA QUEEN OF PARKWOOD 6G							
CONNEALY IMPRINT 8317 PARKWOOD WILLA QUEEN 6B 1792412 WILLA QUEEN OF PARKWOOD 42M									
EPD	BW	WW	YW	Milk	TM	ACC	BW	Adj. 205	Adj. 365
	1.4	54	94	22	49		86	679	1239



A beef bull with an abundance of thickness, volume and performance. 22G should sire feeder calves that grow and gain. 6B is a nice uddered, wedge shaped, feminine dam sired by Imprint.



Champion Pen of Three Bred Heifers at Harvest Showdown



Parkwood **SENSATION** 46G

Lot 41	2094971	WHBS 46G	08/01/2019	Male					
S A V REGISTRY 2831		RITO 707 OF IDEAL 3407 7075							
SA V SENSATION 5615 1943126		S A V MADAME PRIDE 0075							
S A V BLACKCAP MAY 4136		S A V 8180 TRAVELER 004							
CRESCENT CREEK SUPER X 915		S A V MAY 2397							
PARKWOOD LADY ANN 35Z 1681005		DWAJO SUPER X 104N							
PARKWOOD LADY ANN 29S		CRESCENT CREEK ROSEBUD 97P							
		MV F VRD DATELINE 5M							
		LADY AMANDA OF PARKWOOD 19H							
EPD	BW	WW	YW	Milk	TM	ACC	BW	Adj. 205	Adj. 365
	1.1	50	92	12	37		82	647	1235

Another Sensation son that is moderate sized, thick made and deep sided. A popular choice for maintaining low birth weight without giving up performance.



Parkwood **ELEMENT** 32G

Lot 42	2093719	WHBA 32G	06/01/2019	Male					
POSS ELEMENT 215		POSS EASY IMPACT 0119							
4M ELEMENT 405 1886671		POSS ERICA 004							
4M BLACKBIRD 2004		SITZ UPWARD 307R							
COLE CREEK CEDAR RIDGE 1V		RIVERBEND BLACKBIRD 4301							
PARKWOOD QUEEN 41E 1977145		COLE CREEK BLACK CEDAR 46P							
PARKWOOD QUEEN 37C		COLE CREEK CLOVANADA 49S							
		HF KODIAK 123Y							
		PARKWOOD QUEEN 24Y							
EPD	BW	WW	YW	Milk	TM	ACC	BW	Adj. 205	Adj. 365
	0.7	52	87	23	49		84	713	1192

Recommended for heifers, a calving ease bull that is thick, deep and easy fleshing with a moderate frame. 41E is a nice uddered, feminine two year old dam that is sired by calving ease Cedar Ridge.



4M **ELEMENT** 405



Parkwood **ELEMENT** 48G

Lot 43	2095079	WHBA 48G	08/01/2019	Male					
POSS ELEMENT 215		POSS EASY IMPACT 0119							
4M ELEMENT 405 1886671		POSS ERICA 004							
4M BLACKBIRD 2004		SITZ UPWARD 307R							
		RIVERBEND BLACKBIRD 4301							
S A V REGARD 4863		S A V RESOURCE 1441							
PARKWOOD HEATHER JOY 40E 1977146		S A V BLACKCAP MAY 5530							
PARKWOOD HEATHER JOY 59W		REMINGTON COPENHAGEN 137R							
		HEATHER JOY OF PARKWOOD 7M							
EPD	BW	WW	YW	Milk	TM	ACC	BW	Adj. 205	Adj. 365
	2.6	78	130	25	64		86	858	1466

Recommended for heifers, 48G is a true curve bender bull with a low birth weight and added growth with a 205 weight of 858 and a 365 weight of 1466. This dam's first calf, you will like the fact that he started light and ended heavy. She is feminine, productive and perfect uddered.

Parkwood **TOPSHELF**

Lot 44

Lot 44	2093713	WHBA 20G	05/01/2019	Male					
ELLINGSON PLATEAU 1155 ELLINGSON TOP SHELF 5050 1943192 EA EMBLYNETTE 9203 PARKWOOD TIGER 5A PARKWOOD WILLA QUEEN 120E 1977179 PARKWOOD WILLA QUEEN 44Y									
LT TERRITORY 5824 OF EA EA BLACKCLASS 6938 S A V FINAL ANSWER 0035 EA EMBLYNETTE 447 HF TIGER 5T MVF ELLEN 634T CRESCENT CREEK SUPER X 91S PARKWOOD WILLA QUEEN 69W									
EPD	BW	WW	YW	Milk	TM	ACC	BW	Adj. 205	Adj. 365
	1.1	52	95	17	43		81	704	1315

Recommended for heifers. A great looking calving ease bull with overall balance and structural correctness. His sire is one of the featured bulls to sell in the 2016 spring bull sales.



Ellingson **TOP SHELF** 5050



Parkwood **TOPSHELF** 27G

Lot 45

Lot 45	2093717	WHBA 27G	06/01/2019	Male					
ELLINGSON PLATEAU 1155 ELLINGSON TOP SHELF 5050 1943192 EA EMBLYNETTE 9203 S A V SEEDSTOCK 4838 PARKWOOD HEATHER 1E 1977131 PARKWOOD HEATHER 130U									
LT TERRITORY 5824 OF EA EA BLACKCLASS 6938 S A V FINAL ANSWER 0035 EA EMBLYNETTE 447 S A V REGISTRY 2831 S A V BLACKCAP MAY 4136 MVF VRD DATELINE 5M HEATHER OF PARKWOOD 13L									
EPD	BW	WW	YW	Milk	TM	ACC	BW	Adj. 205	Adj. 365
	0.7	58	104	18	47		79	734	1259

Recommended for heifers. 27G is a nice fronted, smooth patterned, calving ease bull. He has a moderate, deep bodied, easy fleshing two year old dam sired by Seedstock.



Big G
Little E

Box 177
Rhein, Sk S0A3K0

G 1-306-621-1776
E 1-306-621-5246

Hail Insurance

Erin Liebrecht
elindenbach@hotmail.com



Thanks to Big Garry and Erin Liebrecht Hail Insurance for purchasing the kids 4-H steers



Parkwood **TOPSHELF** 57G

Lot 46	2094985	WHBS 57G	12/01/2019	Male					
ELLINGSON PLATEAU 1155		LT TERRITORY 5824 OF EA							
ELLINGSON TOP SHELF 5050 1943192		EA BLACKCLASS 6938							
EA EMBLYNETTE 9203		S A V FINAL ANSWER 0035							
KOU PAL ADVANCE 28		EA EMBLYNETTE 447							
PARKWOOD EPPONIA 4E 1977036		KOU PAL JUNEAU 79							
PARKWOOD EPPONIA 33C		KOU PAL EBONETTE 734							
		R B ACTIVE DUTY 0010X							
		PARKWOOD EPPONIA 14Y							
EPD	BW	WW	YW	Milk	TM	ACC	BW	Adj. 205	Adj. 365
	1.4	60	111	20	50		85	720	1373

Recommended for heifers. A big, stretchy, calving ease bull who earned a 205 weight of 720 and a 365 weight of 1373, for an average daily gain of 4.08. Pretty impressive for a first calf heifer calf.



Parkwood **LUTE** 59G

Lot 47	2094987	WHBS 59G	12/01/2019	Male					
PLEASANT VALLEY LUTE 1207		PLAINVIEW LUTTON E102							
HF LUTE 281D 1908337		CHERRY KNOLL ELSA 8014							
HF TIBBIE 27A		HF TIGER 5T							
MV F UPWARD 236X		HF TIBBIE 258W							
PARKWOOD EPPONIA 43C 1858057		SITZ UPWARD 307R							
EPPONIA OF PARKWOOD		MV F ELLEN 112S							
		WINDY WILLOWS STOCKADE 91G							
		EPPONIA OF PARKWOOD 1G							
EPD	BW	WW	YW	Milk	TM	ACC	BW	Adj. 205	Adj. 365
	2.7	47	81	22	46		92	693	1217

59G has worlds of shape and style and the look of a real breeding bull. His structural correctness and perfect pattern make him a real eye appealing bull.



Parkwood **LUTE** 61G

Lot 48	2094989	WHBS 61G	13/01/2019	Male					
PLEASANT VALLEY LUTE 1207		PLAINVIEW LUTTON E102							
HF LUTE 281D 1908337		CHERRY KNOLL ELSA 8014							
HF TIBBIE 27A		HF TIGER 5T							
S A V LEWIS 8373		HF TIBBIE 258W							
PARKWOOD HEATHER JOY 95A 1735852		S A V 8180 TRAVELER 004							
PARKWOOD HEATHER JOY 308T		S A V BESSIE HEIRESS 1184							
		MV F VRD DATELINE 5M							
		HEATHER JOY OF PARKWOOD 8M							
EPD	BW	WW	YW	Milk	TM	ACC	BW	Adj. 205	Adj. 365
	1.2	51	79	21	47		82	713	1176

This Lute bull proudly displays his length, muscle and style. His Lewis dam is a very feminine, beautiful uddered, structurally correct female.

Parkwood **LUTE** 70G

Lot 49

Lot 49	2094990	WHBS 70G	16/01/2019	Male					
	PLEASANT VALLEY LUTE 1207	PLAINVIEW LUTTON E102							
HF LUTE 281D 1908337	HF TIBBIE 27A	CHERRY KNOLL ELSA 8014							
	JL AMMO 2082	HF TIGER 5T							
PARKWOOD LADY ANN 30B 1792397	PARKWOOD LADY ANN 44W	HF TIBBIE 258W							
		S A V BULLET 0473							
		JL RALLEY MISSIE 8202							
		BLACKTOF T BANDOLIER 5M							
		LADY ANN OF PARKWOOD 30M							
EPD	BW	WW	YW	Milk	TM	ACC	BW	Adj. 205	Adj. 365
	2.2	40	74	22	42		85	665	1215

A real stock bull with width, thickness, muscle and rump structure coupled with a nice moderate birth weight.



Parkwood **AMBUSH** 95G

Lot 50

Lot 50	2094782	BJA 95G	23/01/2019	Male					
	TJF 20X AMBUSH 14Z	TJF AMBUSH 20X							
HBH BEACON 489B 1784566	KEMBAR ELINE 48Y	TJF MS FREEDOM 35U							
	COLE CREEK CEDAR RIDGE 1V	SOO LINE KODIAK 8158							
PARKWOOD TIBBIE 7A 1735902	PARKWOOD TIBBIE 28Y	KEMBAR ELINE 112U							
		COLE CREEK BLACK CEDAR 46P							
		COLE CREEK CLOVANADA 49S							
		S A V LEWIS 8373							
		PARKWOOD TIBBIE 053R							
EPD	BW	WW	YW	Milk	TM	ACC	BW	Adj. 205	Adj. 365
	4.2	64	113	26	58		94	794	1335

95G presents the thickness, volume and muscle shape of an ideal beef bull.



Can't make it to the sale?

Internet Bidding Available.

To view this sale visit www.dlms.ca, Fill out the registration form located under registration and sign-up for your free user account and select a username and password.

BIDDERS - To be approved as a bidder, Log in to dlms.ca and click BUYER APPROVAL tab, select the sale you are interested in bidding at and click sign up.

For more information
Call DLMS Reps:
Mark Shologan - 780-699-5082 or
DLMS Purebred Team 780.991-3025



Swan Hills retains the right to ½ interest semen rights on all bulls in the sale. We will arrange at no cost or inconvenience to the buyer.

Welcome to the 14th Annual Blue Collar Bull Sale, once again we appreciate the opportunity to present our group of bulls with two fine families.

We, at Swan Hills Ranch, strive to continue to breed for efficiency to produce beef on an ideal, moderate 1400 lb. cow. Performance of the cow to produce 50% of her body weight in 205 days.

SHR continues to strive for the finest genetics available through our AI, embryo and IVF initiatives using bulls with a balanced set of EPDs, calving ease, midrange WW, YW and Milk are the traits we strive and focus in our breeding stock. For decision making I will offer a three ✓✓✓ Recommended for heifers and ✓✓ for cows.

Call me to discuss your next herd sire at 204-734-0210 as my wife Cindy says, "That's all you want to talk about is your cows!"

Hope to see you at the sale.

Scott, Cindy, Martina, Robyn and Parker



Lot 51

SHR CLASSIC 903G

Lot 51	2131427	SHRX 903G	05/02/2019	Male
		EXAR LUTTON 1831		
		RAFTER S BLACKCAP P909		
DAMERON C-5 AMERICAN CLASSIC 1820769		DAMERON P V F RAPTOR 702		
DAMERON NORTHERN MISS 3114		DAMERON MISS 550		
		S A V 707 RITO 9969		
		A C DUKE GIRL 57		
SHRX ECHO 16B 1809103		HF TIGER 5T		
BH ECHO 1Y		HF JUNE 55W		



Dameron C-5 AMERICAN CLASSIC

EPD	BW	WW	YW	Milk	TM	ACC	BW	Act. 205	Act. 365
	2.1	50	96	22	47		80	828	1421

903G is a unique, bull breeding machine backed with loads of thickness and big top. 903G's granddam is one of our donors going back to the Hamilton's Tiger. Look to Classic to make eye appealing calves to catch the buyer's eyes. American Classic calves have the style and power like no other sire used at our ranch. His progeny have sold and shown to transmit a long front-end, square hip with good hair and free-moving structure. 903G's dam weighed 1380 lbs. at weaning, a moderate dam that weaned 60% of her body weight in 205 days, 16B did her job!

✓✓ Recommended for cows.

SHR CLASSIC 916G

Lot 52

Lot 52	2131694	SHRX 916G	15/02/2019	Male
EXG RS FIRST RATE S903 R3 DAMERON C-5 AMERICAN CLASSIC 1820769 DAMERON NORTHERN MISS 3114		EXAR LUTTON 1831 RAFTER S BLACKCAP P909 DAMERON P V F RAPTOR 702 DAMERON MISS 550 HF KODIAK 5R HF ECHO 84R BUSH'S GRAND DESIGN MVF ZARA LISA 327R		



EPD	BW	WW	YW	Milk	TM	ACC	BW	Act. 205	Act. 365
	2.0	52	93	24	50		84	733	1214

916G's dam, another Tiger daughter continues to produce the top progeny at Swan Hills Ranch. 13Z traces back to the MVF Zara Lisa cow family. Granddam, 162X, has earned herself into our donor program, you will see her pedigree throughout our catalogue. Bush's Grand Design, as Scott Bush mentioned at Denver last year, is one of his most admired sires he has raised to date.

✓✓ Recommended for cows.

SHR CLASSIC 191G

Lot 53

Lot 53	Applied For	SHRX 191G	24/02/2019	Male
EXG RS FIRST RATE S903 R3 DAMERON C-5 AMERICAN CLASSIC 1820769 DAMERON NORTHERN MISS 3114		EXAR LUTTON 1831 RAFTER S BLACKCAP P909 DAMERON P V F RAPTOR 702 DAMERON MISS 550 BON VIEW NEW DESIGN 1407 BUSH'S LADY DIVIDEND 872 MVF VRD DATELINE 13M MVF ZARA LISA 54H		



PE	BW	WW	YW	Milk	TM	ACC	BW	Act. 205	Act. 365
	3.4	49	83	22	47		73	762	1347

191G an ET calf out of American Classic offering a moderate frame and a smooth made turned in shoulder muscle pattern. Look for calving ease without giving up performance on 191G.

✓✓ Recommended for cows.

Our thickest made calf in our offering, sired by the MAR Innovation, this calf is sound-structured, well-balanced and masculine individual. Anchored by a tremendous cow family, 906G combines his herd bull presence with an exceptional set of EPDs of calving ease, performance, and milk. Maternally, 12B goes back to the predicted pedigree from the MVF Tibbie family, and the Rosebud cow families.

✓✓✓ Recommended for heifers.



Lot 54



MAR INNOVATION 251

SHR INNOVATION 906G

Lot 54	2131691	SHRX 906G	07/02/2019	Male
CONNEALY IMPRESSION MAR INNOVATION 251 1820771 MAR FINAL KAHUNA 856		CONNEALY REFLECTION PEARL PAMMY OF CONANGA 194 S A V FINAL ANSWER 0035 MAR KAHUNA PRECISION 328 674		

EPD	BW	WW	YW	Milk	TM	ACC	BW	Act. 205	Act. 365
	3.5	57	99	28	56		78	764	1281

SHR CAMARO 20Z
SHR TIBBIE 12B 1940702
 MVF TIBBIE 38Z

S A V CAMARO 927Z
 MVF TIBBIE 22P
 MVF PIONEER 95X
 MVF TIBBIE 175X



SHR **INNOVATION** 907G

Lot 55	2131692	SHRX 907G	07/02/2019	Male
CONNEALY IMPRESSION MAR INNOVATION 251 1820771 MAR FINAL KAHUNA 856		CONNEALY REFLECTION PEARL PAMMY OF CONANGA 194 S A V FINAL ANSWER 0035 MAR KAHUNA PRECISION 328 674 S A V CAMARO 9272 MVF TIBBIE 22P S A V PIONEER 7301 MVF MAYFLOWER 291X		
SHR CAMARO 20Z SHR MAYFLOWER 5B 1944746 MVF MAYFLOWER 25Z				

EPD	BW	WW	YW	Milk	TM	ACC	BW	Act. 205	Act. 365
	3.6	55	97	26	53		75	722	1301

907G, half brother to 906G, is different in his making, offering a smoother confirmation in his frame and muscle expression. 5B's dam is a predictable calving ease bull with S A V Final Answer in the pedigree, the world's highest used bull in history. The bottom side of this bull's strength going back to the MVF Mayflower cow family, generations of predictability.

✓✓✓ *Recommended for heifers.*



SHR **EASY DECISION** 951G

Lot 56	Applied For	SHRX 951G	06/02/2019	Male
VIN-MAR O'REILLY FACTOR BUSHES EASY DECISION 98 1786857 BUSHES BIG BLACKBIRD 7885		S A V FINAL ANSWER 0035 VIN-MAR EDELLA 2827 BUSHES BIG TIME 452 BUSHES DAKOTA BLACKBIRD 4763 CONNEALY PRODUCT 568 EBONISTA OF CONANGA 471 S A V NET WORTH 4200 TAMBRI BLACKBIRD 2P		
CONNEALY FINAL PRODUCT GF BLACKBIRD 4A 1717120 TAMBRI BLACKBIRD 4X				

PE	BW	WW	YW	Milk	TM	ACC	BW	Act. 205	Act. 365
	2.4	70	124	26	61		81	629	1124

951G, ET dam 4A, Blackbird/Connealy Final Product donor, we acquired from Brad Gilchrist, sibling to Semex's calving ease sire Son in Law, maternal strength with calving ease on both sides of the pedigree.

✓✓✓ *Recommended for heifers.*



Bushes **EASY DECISION** 98



SHR **EASY DECISION** 952G

Lot 57	Applied For	SHRX 952G	06/02/2019	Male
VIN-MAR O'REILLY FACTOR BUSHES EASY DECISION 98 1786857 BUSHES BIG BLACKBIRD 7885		S A V FINAL ANSWER 0035 VIN-MAR EDELLA 2827 BUSHES BIG TIME 452 BUSHES DAKOTA BLACKBIRD 4763 CONNEALY PRODUCT 568 EBONISTA OF CONANGA 471 S A V NET WORTH 4200 TAMBRI BLACKBIRD 2P		
CONNEALY FINAL PRODUCT GF BLACKBIRD 4A 1717120 TAMBRI BLACKBIRD 4X				

PE	BW	WW	YW	Milk	TM	ACC	BW	Act. 205	Act. 365
	2.4	70	124	26	61		83	590	1098

Full brother to 951G, both very uniform in their smooth made muscle pattern to predictable calving ease back in the pedigree with Final Answer on the sire side. Moderate frame with eye appeal.

✓✓✓ *Recommended for heifers.*

SHR **BREAKOUT** 953G

Lot 58

Lot 58	Applied For	SHRX 953G	25/02/2019	Male
	AVF BREAKOUT 5409	S A V BISMARCK 5682		
	MAY-WAY BREAKOUT 1310 1838287	AVF SARA 0045		
	MAY-WAY LADY BANDO 086	MAY-WAY 112 819		
	SITZ UPWARD 307R	MAY-WAY LADY BANDO 745		
	MVF TIBBIE 25X 1550285	CONNEALY ONWARD		
	MVF TIBBIE 22P	SITZ HENRIETTA PRIDE 81M		
		VERMILION DATELINE 7078		
		MVF TIBBIE 28C		



PE	BW	WW	YW	Milk	TM	ACC	BW	Act. 205	Act. 365
	3.4	53	99	29	55		82	676	1239

Sired by the May-Way Breakout 1310, the RBC Supreme Champion and National All-Breed Champion. Excellent EPD profile is of "curve bender status." Growth, carcass merit and maternal strength with moderate birth weight. The dam, our donor dam, MVF 25X, continues to walk the pastures and produce at SHR at 11 years of age. 25X's embryos have reached all corners of the globe, Northern England, China, Russia, and France.

✓✓✓ Recommended for heifers.



May-Way **BREAKOUT** 1310



MVF Tibbie 25X
Dam

SHR **NEXT LEVEL** 914G

Lot 59

Lot 59	2131693	SHRX 914G	15/02/2019	Male
	S&R ROUNDTABLE J328	PLAINVIEW LUTTON E102		
	EXAR NEXT LEVEL 7679B 2052068	PVF PROVEN QUEEN 786		
	EXAR PRINCESS 3794	DAMERON FIRST CLASS		
	VISION UNANIMOUS 1418	GREENS PRINCESS 1012		
	SHR ZARA LISA 68C 1877763	VISIONTOPLINE ROYAL STOCKMAN		
	MVF ZARA LISA 13Z	VISION EDELLA 665		
		HF TIGER 5T		
		MVF ZARA LISA 162X		



914G sired by Next Level, a S&R Roundtable son, Swan Hills Ranch purchased the Manitoba Semen rights to Next Level, call for pricing. Look to 914G to sire eye catching offspring, his pedigree is packed full of the most sought after pedigree seen in the show ring. Plainview Lutton, PVF Proven Queen, and Dameron First Class, rock solid genetics.

✓✓ Recommended for cows.



EXAR **NEXT LEVEL** 7679B
- at weaning at Express Ranches, Oklahoma



Lot 60



Favorite pick of the group of 327A's group of bulls. 24A, the dam of 919G, was purchased from Poplar Meadows, Houston BC as the High Selling Bred Heifer at Agribition and continues to produce. Backed by the calving ease sire, TC Aberdeen 759 and HC Rosebud 103Y (Tiger daughter) on the bottom side. Predictable, proven, calving ease pedigree, he will catch your eye in the pens!!
 ✓✓ Recommended for cows.



J Square S **BEST INTEREST** 327A

SHR **BEST INTEREST** 919G

Lot 60	2131696	SHRX 919G	22/04/2019	Male
--------	---------	-----------	------------	------

S A V BEST INTEREST 0136
J SQUARE S BEST INTEREST 327A 1749540
 SOO LINE STAR MAIDEN 1067

S A V BISMARCK 5682
 S A V EMBLYNETTE 8172
 SOO LINE YELLOWSTONE 6344
 SOO LINE STAR MAIDEN 9075

EPD	BW	WW	YW	Milk	TM	ACC	BW	Act. 205	Act. 365
0.7	56	93	28	55		86	754	1243	

TC ABERDEEN 759
PM ROSEBUD 24'13 1734170
 HF ROSEBUD 103Y

C R A BEXTOR 872 5205 608
 TC BLACKBIRD 4034
 HF TIGER 5T
 HF ROSEBUD 94P

Lot 61



SHR **BEST INTEREST** 917G

Lot 61	Applied For	SHRX 917G	21/02/2019	Male
--------	-------------	-----------	------------	------

S A V BEST INTEREST 0136
J SQUARE S BEST INTEREST 327A 1749540
 SOO LINE STAR MAIDEN 1067

PEAK DOT UNANIMOUS 523A
SHR ROSEBUD 4C 1875077
 EASTONDALE ROSEBUD 34'13

S A V BISMARCK 5682
 S A V EMBLYNETTE 8172
 SOO LINE YELLOWSTONE 6344
 SOO LINE STAR MAIDEN 9075
 VISION UNANIMOUS 1418
 QUEEN OF PEAK DOT 619U
 KA BLACK CEDAR 290
 MWC ROSEBUD 34W

PE	BW	WW	YW	Milk	TM	ACC	BW	Act. 205	Act. 365
1.6	63	103	31	62		86	667	1085	

Sired by our herd sire, Best Interest, out of a moderate 1300 lb. Peak Dot Unanimous daughter. If you are looking to add milk into your females, 4C and 327A boast the milk EPDs to be in the top 3% in the Angus breed. Recommended for heifers.

✓✓✓ Recommended for heifers.



Parker's first buck



Martina at the Ranch



Robyn Agribition 2019

SHR **BEST INTEREST** 918G

Lot 62

Lot 62	2131695	SHRX 918G	21/03/2019	Male					
<p>S A V BEST INTEREST 0136 J SQUARE S BEST INTEREST 327A 1749540 SOO LINE STAR MAIDEN 1067</p> <p>PEAK DOT UNANIMOUS 523A SHR ROSEBUD 4C 1875077 EASTONDALE ROSEBUD 34'13</p>									
<p>S A V BISMARCK 5682 S A V EMBLYNETTE 8172 SOO LINE YELLOWSTONE 6344 SOO LINE STAR MAIDEN 9075 VISION UNANIMOUS 1418 QUEEN OF PEAK DOT 619U KA BLACK CEDAR 290 MWC ROSEBUD 34W</p>									
EPD	BW	WW	YW	Milk	TM	ACC	BW	Act. 205	Act. 365
	1.6	63	103	31	62		78	606	1124

918G offers great performance along with a stacked up pedigree of Vision Unanimous 1418 out of a HF Tiger 5T.
 ✓✓✓ Recommended for heifers.



SHR **BEST INTEREST** 928G

Lot 63

Lot 63	Applied For	SHRX 928G	18/03/2019	Male					
<p>S A V BEST INTEREST 0136 J SQUARE S BEST INTEREST 327A 1749540 SOO LINE STAR MAIDEN 1067</p> <p>S A V RESOURCE 1441 R DOUBLE C PRIMROSE 25'16 1920927 PRIMROSE OF SANDEAN 18U</p>									
<p>S A V BISMARCK 5682 S A V EMBLYNETTE 8172 SOO LINE YELLOWSTONE 6344 SOO LINE STAR MAIDEN 9075 RITO 707 OF IDEAL 3407 7075 S A V BLACKCAP MAY 4136 S A V NET WORTH 4200 ISLA BANK PRIMROSE 22M</p>									
PE	BW	WW	YW	Milk	TM	ACC	BW	Act. 205	Act. 365
	1.4	60	103	26	56		72	590	1169

Mid-framed bull going back to an S A V Resource daughter Martina purchased out of the Agribition sale from Stuart Redekop. Look to 919G to add stretch and length of spine in his offspring.
 ✓✓✓ Recommended for heifers.



SHR **960G**

Lot 64

Lot 64	2131890	SHRX 960G	28/02/2019	Male					
<p>S A V BEST INTEREST 0136 J SQUARE S BEST INTEREST 327A 1749540 SOO LINE STAR MAIDEN 1067</p> <p>SHR HEROINE 61D 1944593 PEAK DOT HEROINE 762A</p>									
<p>S A V BISMARCK 5682 S A V EMBLYNETTE 8172 SOO LINE YELLOWSTONE 6344 SOO LINE STAR MAIDEN 9075 S A V BEST INTEREST 0136 SOO LINE STAR MAIDEN 1067 VISION UNANIMOUS 1418 HEROINE OF PEAK DOT 958U</p>									
EPD	BW	WW	YW	Milk	TM	ACC	BW	Act. 205	Act. 365
	1.0	62	103	24	55		76	670	1234

Another easy doing, sound 327A son, soft made, and out of a small 1300 lb. Freys Opportunity cow packed with a set of EPDs in the top 1% of the breed in yearling and weaning weight, and the top 10% in milk numbers.
 ✓✓✓ Recommended for heifers.





Lot 65 & 66

TWO PENS OF THREE

Consigned by:
Jeff and Sherri Davis
 Box 1474
 Roblin, MB R0L 1P0
 204-207-0104

Lot 67 & 68

TWO PENS OF THREE

Consigned by:
Dale Minhinnick
 Box 31
 Invermay, SK S0A 1M0
 Cell: 306-593-7866

Lot 69

ONE PEN OF THREE

Consigned by:
DenBrok's R-Ranch
Mark and Kris DenBrok
 Box 1227
 Esterhazy, SK S0A 0X0
 306-740-8334

Lot 70

ONE PEN OF THREE

Consigned by:
Clelland Farms
Kevin and Crystal Clelland
 Swan River, MB
 204-281-0961

THANK YOU TO OUR 2019 BLUE COLLAR CUSTOMERS

Vern Schick
 Kirby Lasko
 Roger Polvi
 Shane Sawley
 Venture Farms
 Michael Farms
 Chris Schwartz
 Glendale Ranch
 Dale Minhinnick
 Larry Suidak
 North River Ranch
 Elmer Wiebe
 Curtis Thompson
 G & C Krupski
 K5 River Ranch
 Double J Land and Cattle
 Longview Angus
 Mark & Kaitlyn McMurphy
 Tim Mohr

RPSC Farms
 Randy Trost
 Crazy K's Angus
 Landon & Kel Bostock
 Zuchkan Farms
 Murray & Kerry Greenstein
 Jason Lutz
 3K Holdings
 Malchuk Farms
 Randy Nesbitt
 Todd Britton
 Evan Penner
 Bill & Joe Baumung
 Ryan Boachuk
 Black Pride Ranching
 Jon Krause
 Colin Graham
 Tom Abramatz
 Aaron Hoffman

Chris Hansen
 Moris Shumanski
 Floyd Persson
 Jordan Baumung
 Barrowman Ag
 Neil Zentner
 Len Malinowski
 Chelsea Brock
 Justamere Farms
 Paxhill Farms
 Gerry Hudy
 Airey Cattle Co.
 Clayton Hawreulik
 Cor Vet Cattle Co.
 Randy Wessing
 Brent Follensbee
 Jeff Davis



PRAIRIE CO-OP is dedicated to help **GROW, FUEL, EQUIP, BUILD** and **FEED** your farm. With knowledgeable staff and exceptional products, Prairie Co-op has a location to serve your farm's needs.

For **PETROLEUM** call:

- Melville — 306.728.5811
- Cupar — 306.723.1200
- Lipton — 306.336.2333
- Kelliher — 306.675.2156
- Ituna — 306.795.2441
- Lemberg — 306.335.2461

For **SEED, FERTILIZER** and **CHEMICAL** call:

- Cupar — 306.723.1200
- Strasbourg — 306.725.3200
- Kelliher — 306.718.7054
- Lipton — 306.336.2333

For **HOME CENTRE, LUMBER** and **FEED** call:

- Melville — 306.728.4461
- Fort Qu'Appelle — 306.332.0111
- Ituna — 306.795.2441
- Lipton — 306.336.2333
- Cupar — 306.723.1200
- Kelliher — 306.675.2156
- Lemberg — 306.335.2461

For **AG EQUIPMENT** call:

- Cupar — 306.723.1200
- Lipton — 306.336.2333
- Ituna — 306.795.2441
- Melville — 306.728.5811
- Strasbourg — 306.725.3200



*Possibility
begins with
empowering you.*

At Nutrien Ag Solutions™, we want to help you grow a productive forage crop. Our impressive line-up of Proven® Seed forage products are backed by industry leading genetics and expert agronomic advice. With our extensive forage seed offering, we have an option that fits your acres. nutrienagsolutions.ca

Nutrien
Ag Solutions™

Visit your local Nutrien Ag Solutions location today.

MELVILLE • 306.728.5941
YORKTON • 306.782.2765
LEMBERG • 306.335.2265
THEODORE • 306.647.2112
WALDRON • 306.728.4055

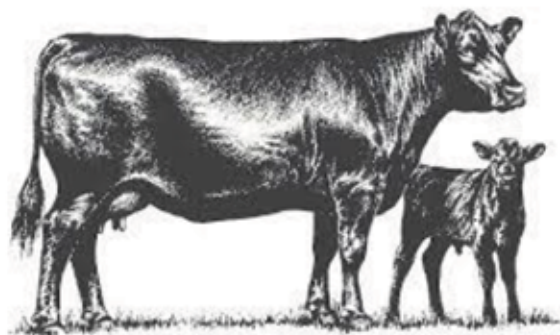
Nutrien Ag Solutions™ and design is a trademark of Nutrien Ag Solutions, Inc. 02/2019

Hackman Feeds

Calving time is here, see Hackman Feeds for all your supplies. We have colostrum, diatomaceous earth, medicated calf ration, milk replacer, e cell, electrolytes and vitamins. We have a variety of loose minerals and tubs to get your cows and bulls ready for breeding season.

Call us at (306) 786-7713
385 5 Avenue North Yorkton, SK S3N 2Z9, Canada

 **Masterfeeds** INC.



DEEP LAKE LAND & LIVESTOCK

RYAN & ASHLEY KATTLER
INDIAN HEAD, SK



**CUSTOM LIVESTOCK EQUIPMENT
BEEF GENETICS/REPRODUCTIVE
SERVICES
PUREBRED RED & BLACK ANGUS**

R: 306-695-7160

A: 306-695-7340

deeplakelandandlivestock@hotmail.com

www.deeplakelivestock.com



Helping Farmers with what
matters most for over 40 years.



Home | Auto | Farm | Business | Life and Health

Phone: 306 728-2165
215 - 3rd Avenue W Melville

www.trustmarkinsurance.ca



**YORKTON
YNH
NEWHOLLAND**

P.O. Box 1030
Highway #10 East
Yorkton, SK S3N 2X3
www.yorktonnewholland.com

NEW HOLLAND
AGRICULTURE

Brad Guenther
General Manager

Bus: 306.783.8511
Fax: 306.782.5595
Cell: 306.621.7978
Email: brad@yorktonnewholland.com

In Partnership with Raymore and Watrous New Holland

FARRELL
AGENCIES LTD.

 Bus: (306) 783-4477 Fax: (306) 786-7577
Toll Free: 1-800-268-3675

Website: www.farrellagencies.com
email: farrellagencies@sasktel.net

Committed to You & Your Community

AgraTactics Agronomy



806-788-2767

25 Myrtle Ave.
Yorkton, SK
S3N 4G5

**Yorkton Ag
& Auto Supply**

Bryce & Della Arnold
Owners / Operators

Box 100 • 552B Broadway St. East
Windsor Centre - Hwy. #10 East
Yorkton, Saskatchewan S3N 2V6

(306) 782-1434
Fax: (306) 783-1415

MNP
LLP

Brian G. Loos
Agricultural and Business Advisor

Box 2590
2424 Westwood Drive
Humboldt, SK S0K 2A0

P: 306.682.2673 ext. 7554
C: 306.621.9099
F: 306.682.5910
E: brian.loos@mnp.ca

MNP.ca

ACCOUNTING > CONSULTING > TAX

**PRODUCTS.
PROGRAMS.
PROFITABILITY.**

INNOVATIVE PRODUCTS ENHANCING
YOUR NUTRITION PROGRAM MAKING
YOU MORE PROFITABLE.

Discover the benefits of feeding with
Trouw Nutrition by contacting your beef territory
manager:

Jessica Hextall 204-901-3058

WWW.TROUWNUTRITION.CA

J-MACK Sandblasting
 A Division of J-MACK Painting Ltd.

PO Box 22039
 Yorkton, SK
 S3N 4B2
 306.621.8442
 info@j-mackpainting.ca




Morgan A.I. Services

306-744-7411
 Saltcoats, SK S0A 3R0



Kelvin Hawreluik

Box 32
 Sheho, SK
 S0A 2T0
 306-269-7323
 E-mail: fasthorses@sasktel.net

Genex Cooperative, Inc.
 A Subsidiary of Cooperative Resources International

www.horizoncu.ca

Branches in:

Melville	306-728-5425
Grayson	306-794-2155
Grenfell	306-697-2803
Neudorf	306-748-2255
Wolseley	306-698-2252



HORIZON
 CREDIT UNION
 Today, Tomorrow, Together

See us for all your financial needs.

Proudly Supporting the Communities We Serve

HILLSIDE WELDING

Fabricating,
 Repairing, Mobile Welding,
 Hydraulic Hoses, Certified Welder



R.R. #1 MELVILLE, SK. S0A 2P0
P.H. 728-4095 OR 728-8375 CELL
FAX 728-4782



GRAIN MILLERS
 IT'S MORE THAN PROCESSING.
 IT'S OUR *Promise.*

JEFF BARAN
 Grain Procurement Merchant
 306.786.5657 ext. 566
 jeff.baran@grainmillers.com

CLINT WALKER
 Feed & Byproduct Sales
 306.786.5657 ext. 510
 clint.walker@grainmillers.com

SweetPro
 PREMIUM FEED SUPPLEMENTS

Clayton Hawreluik

Salesman/Dealer Sheho, Sk.

c.hawreluik@gmail.com 1-306-621-3824
 www.sweetpro.com

GOLLY'S TRENCHING

PO Box 11
 GOODEVE, SK S0A 1C0

- COMPLETE WATER SEPTIC SYSTEM
- BACKHOE SERVICE
- DIRT AND GRAVEL HAULING - END DUMP TRAILER
- PAYLOADER WORK



Heidi Watrych
Acupuncturist

Ph: 306-783-1560 / 877-783-1560
Fax: 306-783-1561

Yorkton Acupuncture and Wholistic Health
112 Fenson Cres Yorkton SK S3N 3S5



DERRYL W. ZENKEWICH
Box 24
Ituna, SK S0A 1N0

Tel: 306-795-2234
Cell: 306-795-7607
Fax: 306-795-3453

Rob Graff & Rachael Yuristy
Bodyshop Owners



Phone: 306-728-4565
Cell: 306-730-6775
Fax: 306-728-3493
Email: bodyshop@doublerautobody.com
SGI DIAL-A-CLAIM: 1-800-667-1480

1231 Queen Street
Box 3509
Melville, SK S0A 2P0

"We meet the nicest people by accident!"



Roundup BUTCHER SHOP

Custom Meat Processing & Sausage Making

Laurel Wiebe

Box 175
Bredenbury, SK
S0A 0H0

Phone: 306-898-2255
Fax: 306-898-2252
email: roundupbutchershop@gmail.com



FUCHS FARM SUPPLY

Serving Western
CANADA

your one stop Ag Supply Shop

Office (306) 762-2125

Kevin (306) 536-4159 Michael (306) 536-4606
Email: fuchsfarms@hotmail.com Website: www.fuchs.ca



Murray Arnold
Salesperson

Cell: (306) 621-5018
Fax: (306) 782-2616
Murray.Arnold@HammondRealty.ca

C.E.T.A. Certified E.T. Facility | Donor Housing | Recipients Available



Dr. Keith Immerkar, D.V.M.

Box 388, Highway 10 East
Swan River, MB R0L 1Z0
f: 204.734.9530
c: 204.734.0720
t: 204.734.4565

swanvalleyvetclinic.com



G3 Melville
PO Box 1210 Stn Main
Melville, SK S0A 2P0
Toll free: 1-844-524-5306
Phone: 1-639-398-0120
Fax: 639-638-6109
askMelville@g3.ca

1 4 T H A N N U A L

BLUE COLLAR BULL SALE

TERMS & CONDITIONS

BREEDING GUARANTEE

All cattle are sound and right, and all with a responsible breeder guarantee of satisfaction. In the event of any unlikely dispute, the regular terms and conditions, standard with the Canadian Angus Association shall apply.

WARRANTY

Blue Collar consignors guarantee to sell you a bull that is structurally sound and has passed a semen test performed by a licensed veterinarian. Should the bull fail to perform as a satisfactory breeder (unable to service cow or heifer) he will be replaced with a bull of equal value. If this is not possible an adjustment will be made to reflect the value of the bull or a credit will be given towards the purchase of another bull. We guarantee to provide you with a breeding bull for the season. We will not however provide replacement or adjustment for death, physical injury or mismanagement. Claims must be made by September 1 of year of purchase. With this in mind, we cannot stress enough the importance of insurance on your bull purchases.

INSURANCE

Insurance agents will be available sale day, or you can make other insurance arrangements through your own agent. Insurance must be purchased on all bulls that return to the respective farms.

SIGHT UNSEEN PROGRAM

Tell us your requirements and we'll select bulls that meet those orders. If you are not 100% satisfied when the trailer is in your yard, you don't own him, no questions asked.

DELIVERY

If you pick up your bull sale day or the day after, you will receive \$100 off the purchase price of your bull. We will work with you to get your bull to your farm free of charge within 100 miles. Delivery time, date and location of bull will be negotiated between buyer and seller. We try to coordinate delivery based on bulls going to certain parts of the world. We will have a trailer heading to your area prior to when you want to start using the bull. Please work with us to receive your bull when we can get him there. If you cannot take the bull when we have a trailer coming to your area, we would appreciate contacting us to make arrangements to pick up your bull.

Bulls going over 100 miles from our respective farms may have transportation charges applied to the delivery of your bull. These charges will be worked out between buyer and seller. We ask that all bulls be received/picked up prior to June 1. Bulls returning to consignor's farm will be kept until May 1 at no cost with a \$2/day cost after May 1.

TERMS OF SALE

Cash or cheque at par, payable to clerks of the sale on sale day, unless prior arrangements have been made. No release will be given until satisfactory settlement has been made.

**** All persons who attend the sale do so at their own risk and the owners, sale management and sale staff assume no liability, legal or otherwise, for property loss or for any accidents that may occur.**

BLUE COLLAR BULL SALE

C/O BOX 211

NEUDORF, SK

SOA 2T0



**PLEASE BRING THIS CATALOGUE
WITH YOU TO THE SALE**

CREATED BY:

