



**CATTLEMAN'S
CALIBER**
ANGUS BULL SALE

TIMED
ONLINE
AUCTION

APRIL
1 & 2, 2020

Dual E Cattle Co. ◆ *4K Angus*
WYNYARD, SK EARL GREY, SK

RED & BLACK ANGUS

Dual E Cattle Co.

4K Angus

CATTLEMAN'S CALIBER
April 1 & 2, 2020
 ANGUS BULL SALE

Sale Contacts

ERIC	306-560-7085
ERIN	306-560-7449
TIM	306-731-7995
PAULETTE	306-731-7899
MARK SHOLOGAN	780-699-5082
DLMS FARM GATE TIMED AUCTIONS	
SHANE CASTLE	306-741-7485
CASTLEROCK MARKETING	
LARRY TONER	306-834-7652
STOCKMAN'S INSURANCE	

RACEHORSE STYLE
 TIMED ONLINE AUCTION
 BIDDING OPENS *9:00am*
 ►► **APRIL 1, 2020**
 BIDDING CLOSSES *6:00pm*
 ◀◀ **APRIL 2, 2020**



Timed Auctions Made Easy

REGISTER & BID
WWW.FARMGATETIMEDAUCTIONS.CA

\$100 DISCOUNT WHEN YOU HAUL YOUR OWN BULL

Videos OF THE OFFERING CAN BE VIEWED AT WWW.CATTLEVIDS.CA OR ON FACEBOOK.

BULLS WILL BE KEPT FREE OF CHARGE UNTIL
May 1st, 2020
 AND MUST BE INSURED

Be our guest
 OPEN HOUSE & PEN PREVIEW

FREE DELIVERY WITHIN
 - SASKATCHEWAN -
 DELIVERY ARRANGEMENTS
 WILL BE MADE
 FOLLOWING THE SALE

4K ANGUS | EARL GREY, SK
March 22, 2020
 DUAL E CATTLE CO. | WYNYARD, SK
March 28, 2020

CATTLEMAN'S CALIBER

BREEDER GUARANTEE

All bulls will be semen tested. Any deferred bulls will be delivered once they have passed their test and are ready to work. All animals will be sold under the terms and guarantees set forth by the Canadian Angus Association.

HERD HEALTH

All animals have been developed under a full herd health vaccination program as advised by a licensed vet.

PURCHASER'S RISK

Each animal becomes the risk of the purchaser upon completion of the sale. Animals will be cared for at the purchaser's risk for a reasonable length of time. We strongly encourage that insurance be purchased on bulls following the sale. All animals that are not being picked up immediately following the close of the sale must be insured.

PAYMENT

Payment in full must be made by cheque or cash immediately following the sale. The right of property shall not pass until full settlement is made.

CERTIFICATE OF REGISTRY

A certificate of registration will be transferred to the buyer after full settlement has been made.

How To Bid

1. Visit www.farmgatetimedauctions.ca, select LOGIN/REGISTER button on the left hand side. First time users will select the REGISTER button. Fill out the registration form to sign-up for a free user account. Once you have registered, you will receive text and email messages whenever there is activity on your favorite lot(s) or someone challenges your proxy bid. It is for this reason, that you will be asked to include your current email address and cell phone number when setting up your account.

If you already have an account with Farm Gate Timed Auctions, simply enter your username and password to continue. This takes you to a list of both current and upcoming Farm Gate Auctions. Select the **CATTLEMAN'S CALIBER ANGUS BULL SALE**.

2. On Wednesday, April 1, 2020 at 9:00 AM MST, the sale will go live and bidding will open. Opening minimum bids will be posted for each lot, plus any corrections to catalog information or changes to the sale offering. Click BID on the lot of your choice to place your bid. You will be notified by text and/or email if you are outbid. You also have the option to place a proxy bid, to your preferred value, on any sale lot.

About The Sale

1. Lots, pictures, videos and links to the catalog will be posted by March 12, 2020.

2. Choose your favorite lot(s) in the sale at this time and any time there is active bidding on a lot you have identified as a favorite, you will get a text and/or email notifying you of this activity.

3. As mentioned above, you also have the option to place a proxy bid, to your preferred value, on any sale lot. We understand that you have lots on the go; placing a proxy bid offers you the flexibility to go on about your day without worry of losing out on the lot you want. Should another bidder place a bid higher than your proxy's maximum, your proxy will no longer be effective and you will need to manually bid again if you so choose.

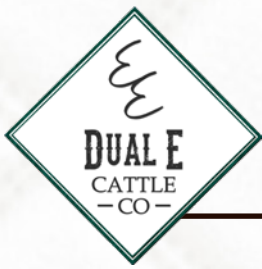
4. Bidding is scheduled to close at 6:00 PM MST, Thursday, April 2, 2020, unless a bid is placed within the last five minutes of the sale. Should a bid be placed in the last five minutes of the sale, bidding on all lots will remain open for an additional five minutes each time a new bid is placed. When no bidding activity has occurred within the sale for a period of five minutes the sale will then close on all lots.

5. Within 24 hours of the sale closure, Dual E Cattle Co. and 4K Angus will contact all the winning bidders of their lots to arrange payment, transfer of registration papers, and delivery.

If you require assistance using the DLMS Farm Gate Timed Auctions website, please contact Mark Shologan at 780-699-5082 or any of the Dual E Cattle Co/4K Angus representatives.

If you do not wish to place your bids online, any member of the DLMS or Castlerock Marketing teams would be happy to accept your bids on your behalf.





ERIC, ERIN, BOHDAN & HALLIE YEWSIUK

Box 495 Wynyard, Saskatchewan S0A 4T0

Eric: 306-560-7085 | Erin: 306-560-7449

dualecattleco@gmail.com

We would like to extend a warm welcome to the 2020 Cattleman's Caliber Angus Bull Sale! We are pleased to be working alongside Tim, Paulette, Ellen and Scott of 4K Angus once again this year. You'll notice there have been some changes to the sale for this year. First, Diamond C Liberty Angus chose to market their bulls differently this year. We appreciate everything that they did to get this sale started and we want to wish them all the best this sale season! The second change is the updated format of the Cattleman's Caliber Sale. We are very excited to offer our bulls through DLMS Farm Gate Timed Auction. In deciding to go forward with the sale this way, we felt we could offer our customers a low pressure type of sale with the added convenience of bidding from home, the tractor, or at work off the farm. As always the bulls will be available for viewing any time prior to the sale and we invite everyone to attend our Open House on Saturday, March 28, 2020, 11:00 AM to 4:00 PM.

One thing that has not changed for 2020 is the quality of the bulls. This group of ten bulls is as honest as they come; within this offering we have a variety of types of bulls that would fit most programs. Our bulls are developed slowly on a Masterfeeds Blueprint Bull Developer pellet, pail fed at 1-1.25% of body weight, alongside alfalfa-grass hay with supplemental chelated mineral. The result is an athletic, workable group of bulls that won't miss a beat when they transition to their new homes and go to work. Birth weights are actual weights taken within 24 hours of birth. Weaning and yearling weights are the adjusted weights by the Canadian Angus Association.

Our herd sires are selected with the primary goal being to produce females to put back in our own growing herd. We are happy with the direction our herd is growing in. We are fortunate to be building our herd off of a solid base and pride ourselves in having good footed, good uddered, easy going, moderate framed mothers. We are constantly working to maintain and build on this foundation and feel our bulls will carry forward these traits in the herds they enter.

We welcome everyone to come tour the cow herd and the bull pen for themselves. We are always open to visitors and coffee is always on! Please feel welcome to call either of us with any questions you may have about the bulls or our program. Videos of the bulls are available online. We look forward to seeing you at the Open House!

- Eric, Erin, Bo & Hallie



Join us for our annual
OPEN HOUSE &
CUSTOMER APPRECIATION

Saturday, March 28, 2020

- AT THE RANCH -

11:00 AM TO 4:00 PM
LUNCH AT NOON





RED DUAL-E *Authority* 7G

Jan. 14, 2019 EUSX 7G 2095181

- Red Andras Fusion R236
- Red Bieber CL Atomic C218
- Red Bieber Dateline 308Y
- Black Wheel Odyssey 117U
- Red U6 Samaria 31A
- Red U6 Samaria 5U

BW	91	Adj. 205	653	Adj. 365	1131	
BW	WW	YW	MILK	TM	CE	MCE
-0.2	+45	+78	+27	+50	+6.0	+3.0

**SELLING FULL POSSESSION
& 2/3 INTEREST**

Red Dual-E Authority 7G turned a lot of heads in our Yards pen last fall at Agribition. He is one of the first calves out of our AI program and is presently the only son of Red Bieber CL Atomic C218 in Canada! In addition to 7G, we have two daughters of Atomic in our replacement pen, and they rise to the top with ease. 7G stands on a well structured, dark foot. Has an exceptional temperament. He may just be the most complete bull we have raised to date. Out of an exceptional Odyssey daughter Samaria cow and outcross sire, backed by well above average EPD's, 7G is the complete package.



Red Bieber CL Atomic C218



Red U6 Samaria 31A



Red U6 Samaria 5U (granddam) and Red U6 Samaria 31A (dam)



RED ACC *Upward* 115C

Apr. 5, 2015 BIA 115C 1879066



SFL Up Top 42Y
ACC Upward 99A
 Red Crescent Creek Annie 137W
 Red Mcraes Mohican 40X
Red ACC Primula 32A
 Red Anderson's Primula 37W

BW +4.5 WW +42 YW +63 MILK +24 TM +45 CE -5.0 MCE 0.0 **BW** 80 **Adj. 205** 738 **Adj. 365** 1232



RED DUAL-E *Overdrive* 12G

Jan. 21, 2019 EUSX 12G 2095098

ACC Upward 99A
Red ACC Upward 115C
 Red ACC Primula 32A
 Red Riverdale Hawk 339T
Red Riverdale Lakme 74A
 Red Riverdale Lakme 242S

BW 80 **Adj. 205** 629 **Adj. 365** 1051

12G comes to us out of one of our favorite cows, 74A; a cow we wouldn't change a thing about. 12G is full-hipped and deep-bodied, yet he offers moderation with a smoothly made front end making him an excellent choice for cows or heifers. We were

fortunate to have the opportunity to use his full brother, EUSX 10F on a select group of cows before he went to Quinton Semenoff and Lana Graham's ranch at Dysart, SK.



BW	WW	YW	MILK	TM	CE	MCE
+1.0	+23	+35	+26	+38	-1.0	+6.0



RED DUAL-E *Upward* 19G

Feb. 2, 2019 EUSX 19G 2095112

ACC Upward 99A
Red ACC Upward 115C
 Red ACC Primula 32A
 Red Kenray X-Over 3X
Red Kenray Kit 117B
 Red Riverdale Kit 27Y

BW 88 **Adj. 205** 601 **Adj. 365** 1006

Upward 115C sired a consistent group of bull calves. 19G is no exception, carrying forward the same length of body and hind quarter we expect to see in 115C's progeny. Not to be overshadowed, his dam Kit 117B is a mid-framed cow with a neat udder and lots of milk.



BW	WW	YW	MILK	TM	CE	MCE
+3.1	+38	+62	+25	+44	-3.0	+3.0

RED DUAL-E *Capone* 21G

Feb. 5, 2019 EUSX 21G 2095786

- ACC Upward 99A
- Red ACC Upward 115C
- Red ACC Primula 32A
- Red Crowfoot Moonshine 8081U
- Red Liberty Rose 5D
- Red Riverdale Rose 244U

BW 85 Adj. 205 627 Adj. 365 1011

This Moonshine grandson is as stout as they come. 21G is smooth fronted, square and evenly built. While his hooves are lighter in colour, he is not lacking in heel.



BW	WW	YW	MILK	TM	CE	MCE
+1.5	+36	+56	+20	+38	+2.0	+7.0



RED DUAL-E *Chester* 22G

Feb. 6, 2019 EUSX 22G 2095116

- ACC Upward 99A
- Red ACC Upward 115C
- Red ACC Primula 32A
- Red Mar Mac Indicator 30Z
- Red Kenray Charo 17C
- Red Kenray Charo 71U

BW 93 Adj. 205 567 Adj. 365 965

A wide topped, THICK, smooth moving bull. He stands on a good foot with lots of heel. His dam 17C had been injured shortly after calving which held him back in the beginning, however since weaning he's been showing us what he is really made of! A full brother to 22G sold to Dean Bossence of Mortlach, SK in last year's sale.



BW	WW	YW	MILK	TM	CE	MCE
+3.3	+34	+54	+20	+37	-3.0	+2.0



RED DUAL-E *Distinction* 23G

Feb. 9, 2019 EUSX 23G 2095119

- ACC Upward 99A
- Red ACC Upward 115C
- Red ACC Primula 32A
- Red Gold-Bar Unique J W 1113U
- Red Serenity Lacie UQ 210A
- Red Gold-Bar Lacie H 206P

BW 93 Adj. 205 732 Adj. 365 1172

210A, the dam of lot 6, is a well made cow with little to fault her on. She has produced a top end bull every year since she joined our program. 23G will catch the attention of anyone who tours the pen. Just as his name states, he carries himself with distinction.

Wide topped, long and muscular - he will add pounds to his calves. 23G is best suited for use on cows.



BW	WW	YW	MILK	TM	CE	MCE
+3.7	+33	+52	+21	+38	-3.0	+5.0



DUAL E CATTLE CO.



RED DUAL-E *Tex* 29G

Feb. 27, 2019 EUSX 29G 2095138

- ACC Upward 99A
- Red ACC Upward 115C
- Red ACC Primula 32A
- Red Wraz Coleman 44Z
- Red Dual-E Samaria 1C
- Red U6 Samaria 31A

BW 86 Adj. 205 623 Adj. 365 935

Another son out of the Samaria family, 29G is our youngest Upward son on offer. He is similar to the other Upward sons, but with more style. His dam 1C has a beautiful, tidy udder and pleasant disposition. A maternal

brother, EUSX 7F sold to Jason Dorish of Wynyard, SK last spring. It is worth noting, our first group of Upward daughters have left us impressed following calving - desirable udders, even temperament, and outstanding mothers.

7

BW	WW	YW	MILK	TM	CE	MCE
+1.0	+41	+68	+30	+51	+2.0	+4.0

RED TRIPLE H *Loaded* 37D

Mar. 9, 2016 HRA 37D 1917166

Ref

- Red Ter-Ron Fully Loaded 540R
- Red Vikse DA Fully Loaded 88X
- Red Vikse DWN 536T
- Red DKF Illicit 17S
- Red Triple H Cherokee 114X
- Red Deer Range Cherokee 458K



BW +0.8 WW +45 YW +71 MILK +19 TM +42 CE +5.0 MCE +8.0 BW 85 Adj. 205 693 Adj. 365 -

RED DUAL-E *Young Gun* 32G

Mar. 3, 2019 EUSX 32G 2095142

- Red Vikse DA Fully Loaded 88X
- Red Triple H Loaded 37D
- Red Triple H Cherokee 114X
- JJL Traction 70Z
- Red Liberty Rose 233C
- Red Riverdale Rose 46Z

BW 80 Adj. 205 603 Adj. 365 985

32G is the youngest bull in our offering and the last Loaded 37D son we will have. Young Gun is backed by smooth, moderate framed genetics on both sides of his pedigree. He will easily excel in any heifer program without forfeiting growth in his calves.

8



BW	WW	YW	MILK	TM	CE	MCE
-0.6	+29	+47	+20	+35	+8.0	+12.0



RED L-DEE *Stockman* 16E

Mar. 22, 2017 TSD 16E 2007122

- Red RSL Stockman 711A
- Red Bridgeway Private Stock 36C
- Red Gold-Bar Betty K 1072N
- Red Riverdale Boom 535N
- Red L-Dee Finesse 16W
- Red L-Dee Finesse 6N



BW	86	Adj. 205	-	Adj. 365	-	BW	+0.5	WW	+27	YW	+54	MILK	+21	TM	+35	CE	+7.0	MCE	+4.0
----	----	----------	---	----------	---	----	------	----	-----	----	-----	------	-----	----	-----	----	------	-----	------

RED DUAL-E *Hank* 15G

Jan. 24, 2019 EUSX 15G 2095102

- Red Bridgeway Private Stock 36C
- Red L-Dee Stockman 16E
- Red L-Dee Finesse 16W
- Red SSS Bomber 262B
- Red Dual-E Kit 20E
- Red Liberty Kit 117B

BW	93	Adj. 205	763	Adj. 365	1208
----	----	----------	-----	----------	------

15G is a rugged, long bodied bull. He is larger framed and good footed. He is growthy, boasting a weaning weight ratio of 123 and yearling weight ratio of 115, and all out of a first calf heifer at that! Like his paternal siblings, 15G inherited his sire's quiet disposition.



BW	WW	YW	MILK	TM	CE	MCE
+3.4	+28	+57	+22	+36	+2.0	+5.0



RED DUAL-E *Ranchhand* 18G

Feb. 1, 2019 EUSX 18G 2095109

- Red Bridgeway Private Stock 36C
- Red L-Dee Stockman 16E
- Red L-Dee Finesse 16W
- Red Cockburn Breakout 539C
- Red Dual-E Samaria 11E
- Red U6 Samaria 15B

BW	83	Adj. 205	684	Adj. 365	1050
----	----	----------	-----	----------	------

This smooth made Stockman son is built just right for those looking to keep their calving season stress to a minimum. Dark red, also out of a first calf heifer. Unfortunately, Stockman was injured in his first breeding season. Although his calf crop was small, the quality did not fall short.



BW	WW	YW	MILK	TM	CE	MCE
+1.6	+38	+74	+23	+42	+3.0	+4.0



DUAL E CATTLE CO.



Red Serenity Lacie UQ 210A | dam of Lot #6



Red U6 Samaria 15B | granddam to Lot #10



Red U6 Samaria 5U | matriarch of the Samaria cow family





TIM, PAULETTE, ELLEN & SCOTT KEYS

Box 277 Earl Grey, Saskatchewan SK S0G 1J0
Tim: 306-731-7995 | Paulette: 306-731-7899
4kangus@gmail.com

Welcome to the Cattleman's Caliber Angus Bull Sale, our online auction through DLMS Farmgate. We are happy to be partnering with Eric and Erin Yewsiuk of Dual E Cattle Co. to bring you a wide variety of black and red angus bulls that will fit into your breeding program. We would like to thank all that have attended and supported the prior Cattleman's Caliber sale events, as well as everyone who has supported our bull program in previous years. We hope that you appreciate the convenience of using the DLMS Farm Gate sale format, which eliminates buying under pressure. This catalogue, as well as videos can be seen on the Farm Gate site, www.farmgatetimeductions.ca.

We at 4K Angus run a mixed farm operation located 10.5 miles straight north of Craven, SK. Our farm is very much family run with our two kids partnering in our purebred business and being involved in all aspects of the operation; from choring to fitting and showing cattle at Agribition. We've been supplying purebred yearling bulls since 2014, each year seeing an increase in the quality that we have to offer. In addition, we have been selecting AI sires since 2015 to improve our overall herd merit by retaining females with genetics for performance and functionality. We strive to produce cattle that will calve easy, gain well and will do well in the marketplace.

The bulls on offer were summered on pasture without creep, and we are pleased in their muscling and natural weaning weights. This fall we chose a diverse sired group of bulls to show at Agribition and the Medicine Hat Beef Pen Show. We couldn't have been more pleased with the positive interest and feedback we received from fellow cattlemen. Our bulls are wintered in a large pen to promote exercise, their feet have never been trimmed and they will be ready to work for you. They are currently fed free-choice hay, a mix of homegrown oats with a Propel bull supplement concentrate from Masterfeeds, along with SweetPro lick tubs. Our vaccine program for the bulls are Cattlemaster Gold and Tasvax that have both been boosted. They have been treated with Ivomec and BOSS for parasites as well as have access to a cattle oiler.

We highly encourage insurance being purchased on any bulls sold. We ask that all purchased bulls be rehomed by May 1st, as we farm a considerable amount of grain land. If we deliver, it will be coordinated between us and each purchaser. We want the bull to work for you, so we would like the bulls in your hands in enough time to adjust and fit into your breeding schedule.

Please feel free to join us at our open house on March 22nd to view the bulls in person. You really need to see this group in person to appreciate their dimension and style. If you can't make it to the open house, give us a call and we will organize a time that works for you. Thank you for taking our program into consideration during this bull sale season.

- Tim, Paulette, Ellen & Scott



Join us for our
OPEN HOUSE

Sunday, March 22, 2020

- AT THE FARM -

11:00 AM TO 4:00 PM

4K ANGUS



Silveiras *Watchout* 0514

Sept. 19, 2010 IMP 0514X



OCC Legend 616L
B C Lookout 7024
 Gibbet Hill Mignonne E37
 Gambles Hot Rod
Silveiras Elba 6546
 Silveiras Elba 2520

BW +1.8 WW +46 YW +83 MILK +18 TM +41 CE +5.0 MCE +7.0 **BW** - **205D** - **365D** -



KEYS *Watchout* 26F

Jan. 25, 2018 KEYS 26F 2021761

B C Lookout 7024
Silveiras Watchout 0514
 SILVEIRAS Elba 6546
 Bell Net Return 3U
Bell Blackcap 26Y
 Bell Blackcap 31P

BW 82 **Adj. 205** 713 **YW** 1208

This two-year-old Watchout son is level made, deep bodied and wide based, and is currently weighing in at 1800 lbs. We appreciate the muscling and smoothness he possesses. With a good set of feet under

him, we are sure he will be able to make the rounds in your pasture. This bull is NOT VIRGIN. He spent the summer with a select 10 cows so we could see him work for ourselves. We are happy with how he performed and maintained his condition. He will be sold with a veterinary guaranteed clean bill of health.



BW	WW	YW	MILK	TM	CE	MCE
+1.4	+36	+68	+18	+36	+3.0	+4.0



KEYS *Watchout* 53G

Jan. 26, 2019 KEYS 53G 2111300

B C Lookout 7024
Silveiras Watchout 0514
 SILVEIRAS Elba 6546
 Bell Ribstone 53U
Bell Eugenie Erica 53Y
 Bell Eugenie Erica 30W

BW 92 **Adj. 205** 723 **YW** 1314

This high-performance bull is about as smooth as they come. He was shown at Agribition and the Medicine Hat Beef Pen Show. His length of body and muscling, in addition to his style are sure to make some attractive and valuable progeny. This bull

can get out and move and should pass on his correct structure to his offspring. His daily gains are among the top of the bull pen. His dam is one of our original cows who has been a highly productive, easy fleshing and greatly maternal female in our herd.



BW	WW	YW	MILK	TM	CE	MCE
+1.8	+44	+76	+20	+42	+1.0	+3.0



Hi Low *Eliminator* 58C

Feb. 24, 2015 HTD 58C

- SAV Eliminator 9105
- Peak Dot Eliminator 396Z
- Lady of Peak Dot 459U
- Black Ridge Edition 25
- Hi Low Eston Anne 64W
- Hi Low Eston Anne 54R



BW	82	205D	706	365D	-	BW	+0.3	WW	+34	YW	+62	MILK	+20	TM	+37	CE	+1.0	MCE	+7.0
----	----	------	-----	------	---	----	------	----	-----	----	-----	------	-----	----	-----	----	------	-----	------

KEYS *Eliminator* 345G

Jan. 27, 2019 KEYS 345G 2098596

- Peak Dot Eliminator 396Z
- Hi Low Eliminator 58C
- Hi Low Eston Anne 64W
- Bell Pioneer 25A
- Keys Black Lucy 45C
- Bell Black Lucy 45Y

BW	78	Adj. 205	741	YW	1322
----	----	----------	-----	----	------

Here's a bull that received a lot of attention this fall. He was part of our show string that we took to Agribition and the Medicine Hat Beef Pen Show. Admired for his length, width, depth and cleanliness, along with his low birth weight. He is off our walking bull and resembles him greatly. He has an excellent disposition and comes from a highly maternal Pioneer dam who has thrown some of our favourite calves year after year.



BW	WW	YW	MILK	TM	CE	MCE
+1.1	+40	+70	+21	+41	-2.0	+4.0



KEYS *Eliminator* 245G

Jan. 27, 2019 KEYS 245G 2098591

- Peak Dot Eliminator 396Z
- Hi Low Eliminator 58C
- Hi Low Eston Anne 64W
- Hi Low New Elixir 6X
- Keys Black Lucy 45B
- Bell Black Lucy 45Y

BW	86	Adj. 205	693	YW	1298
----	----	----------	-----	----	------

This is another Eliminator son that we appreciate in terms of depth, width and muscling. He is level made and strides out nicely. He was the second highest in the Eliminator calves for weaning and yearling weights. His New Elixir dam is wide, deep and puts it all into her calf. He has calving ease on both sides of his pedigree.



BW	WW	YW	MILK	TM	CE	MCE
+2.5	+39	+70	+21	+41	-4.0	+3.0



4K ANGUS



15

BW	WW	YW	MILK	TM	CE	MCE
+1.6	+36	+67	+23	+41	-3.0	+1.0

long, deep and packed with muscle. Additionally, we love the levelness and smooth front of him. He has calving ease on both sides of his pedigree.

KEYS *Eliminator* 34G

Feb. 8, 2019 KEYS 34G 2098623

- Peak Dot Eliminator 396Z
- Hi Low Eliminator 58C
- Hi Low Eston Anne 64W
- Hi Low Tiger 107B
- Keys Black Lucy 345E
- Keys Black Lucy 45C

BW	89	Adj. 205	751	YW	1192
----	----	----------	-----	----	------

A very stylish and well-structured Eliminator son off of a first calf heifer. This bull makes us excited for the future of this cow. She has a perfect udder, lots of milk and did an excellent job on this calf. He is



16

BW	WW	YW	MILK	TM	CE	MCE
+1.5	+39	+72	+21	+41	+1.0	+6.0

attributes. She has an excellent udder and is moderate in her size.

KEYS *Eliminator* 420G

Feb. 10, 2019 KEYS 420G 2098600

- Peak Dot Eliminator 396Z
- Hi Low Eliminator 58C
- Hi Low Eston Anne 64W
- Merit Big Dawg 3049A
- Lodge Duchess 20D
- Lodge Duchess 8Z

BW	86	Adj. 205	700	YW	1178
----	----	----------	-----	----	------

Here's a super stylish Eliminator bull. He is wide based, long bodied and deep. He's a different type, but we love his leg structure and neck extension. He is smooth and came unassisted. His dam is a Big Dawg daughter with lots of rib, depth and maternal



17

BW	WW	YW	MILK	TM	CE	MCE
+4.0	+39	+68	+19	+39	-7.0	+2.0

KEYS *Eliminator* 243G

Feb. 13, 2019 KEYS 243G 2098590

- Peak Dot Eliminator 396Z
- Hi Low Eliminator 58C
- Hi Low Eston Anne 64W
- Hi Low New Elixir 6X
- Keys Blackclass 43B
- Bell Blackclass 43Z

BW	96	Adj. 205	698	YW	1170
----	----	----------	-----	----	------

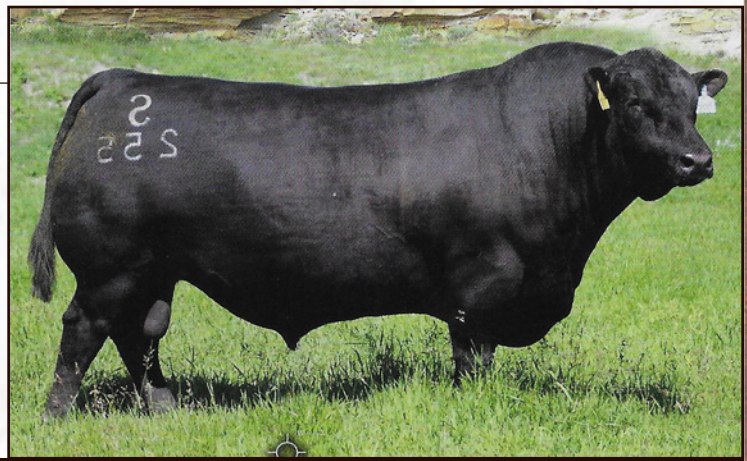
This is an Eliminator son that is shorter in stature, but built right and clean through his front. He should moderate frame and bulk up calves. He carries a lot of muscling in his hip and is deep bodied. This bull is smooth and has calving ease on both sides. He came unassisted with a 96 lb birthweight.



S Chisum 255

Mar. 15, 2012 IMP 255

- S Alliance 3313
- S Chisum 6175
- S Gloria 464
- Shipwheel Chinook
- S Blossom 0278
- S Blossom 8378



BW	78	Adj. 205	867	Adj. 365	1352	BW	-0.5	WW	+57	YW	+89	MILK	+18	TM	+47	CE	+12.0	MCE	+14.0
----	----	----------	-----	----------	------	----	------	----	-----	----	-----	------	-----	----	-----	----	-------	-----	-------

KEYS Chisum 453G

Jan. 24, 2019 KEYS 453G 2111373

- S Chisum 6175
- S Chisum 255
- S Blossom 0278
- Bell Pioneer 25A
- Keys Eugenie Erica 53D
- Bell Eugenie Erica 53Y

BW	90	Adj. 205	774	YW	1326
----	----	----------	-----	----	------

This herd bull candidate is one that we have been eyeing since birth. Was part of our Agribition and Medicine Hat Beef Pen Show string. He is smooth, deep and packs an added punch in the hip. We really appreciate his structure and style, in addition to his muscle pattern. His weaning and yearling weights were the highest in the pen. He came unassisted from a second calver Pioneer dam with a 78 lb birthweight. He has calving ease on both sides of his pedigree.



BW	WW	YW	MILK	TM	CE	MCE
+1.3	+50	+80	+21	+46	+3.0	+7.0



KEYS Chisum 363G

Jan. 25, 2019 KEYS 363G 2111284

- S Chisum 6175
- S Chisum 255
- S Blossom 0278
- Bell Pioneer 25A
- Keys Eugenie Erica 63C
- Bell Eugenie Erica 63Z

BW	96	Adj. 205	656	YW	1226
----	----	----------	-----	----	------

Another Chisum son that we are happy with. This bull is wide based, smooth and muscular. We appreciate his cleanliness, structure and strength of top. He was born unassisted, and with a 96 lb birthweight which really shows how smooth these calves are at birth. Again there is calving ease on both sides of the pedigree, and his dam has excellent maternal qualities.



BW	WW	YW	MILK	TM	CE	MCE
+2.6	+44	+74	+14	+36	-1.0	+5.0



4K ANGUS



JINDRA *Acclaim*



Jan. 13, 2014 IMP 134B

Jindra Double Vision
Jindra 3rd Dimension
Jindra Sapphire J417
Connealy Impression
Jindra Blackbird Lassy 1111
Jindras Enchantress J103

BW +0.9 WW +72 YW +143 MILK +32 TM +68 CE +6.0 MCE +12.0 **BW** 76 **Adj. 205** 852 **Adj. 365** 1577



KEYS *Acclaim* 26G

Jan. 24, 2019 KEYS 26G 2111370

Jindra 3rd Dimension
Jindra Acclaim
Jindra Blackbird Lassy 111
Bell Net Return 3U
Bell Blackcap 26Y
Bell Blackcap 31P

BW 66 **Adj. 205** 527 **YW** 1028

This twin bull calf weaned at the lower end of our bull pen, due to being the less aggressive twin raised by his mother. Despite this, he has shown great gains since weaning and is coming into his own. He is only getting better with age, and definitely



BW	WW	YW	MILK	TM	CE	MCE
+1.2	+49	+100	+25	+50	+3.0	+6.0

should be assessed come closer to sale time. He has excellent feet and legs, and is sure to be a sleep-all-night, calving ease sire. He has the genetics behind him to create offspring with the typical Acclaim frame building traits.



KEYS *Acclaim* 513G

Jan. 24, 2019 KEYS 513G 2111723

Jindra 3rd Dimension
Jindra Acclaim
Jindra Blackbird Lassy 111
Bell Pioneer 25A
Keys Eugenie Erica 513C
Keys Eugenie Erica 53A

BW 76 **Adj. 205** 670 **YW** 1302

Here's a bull with impressive muscling and width of body. This is a powerhouse backed by the good footed, large framed and easy moving Acclaim. His Pioneer sired mother has an excellent udder, lots of milk and has produced numerous easy fleshing calves



BW	WW	YW	MILK	TM	CE	MCE
-0.2	+49	+98	+25	+50	+5.0	+10.0

over the years. He has had the highest daily gain of all the bulls we have on offer this year. A very versatile bull, with great calving ease.

KEYS *Acclaim* 563G

Jan. 25, 2019 KEYS 563G 2111104

Jindra 3rd Dimension
Jindra Acclaim
Jindra Blackbird Lassy 111
Connealy Thunder
Keys Eugenie Erica 63E
Bell Eugenie Erica 63Z

BW 82 **Adj. 205** 737 **YW** 1272

This bull is the first calf off of a Thunder daughter, and all we can say is 'good job mama!' This bull exemplifies depth, width, length and a strong top. He has been a standout since weaning, with an excellent disposition and muscling. He is an all-around calving ease bull from both sides of his pedigree. His mother is moderately built, beautifully uddered and functional.



BW	WW	YW	MILK	TM	CE	MCE
+1.2	+55	+104	+25	+53	0.0	+6.0

22

KEYS *Acclaim* 426G

Jan. 26, 2019 KEYS 426G 2111337

Jindra 3rd Dimension
Jindra Acclaim
Jindra Blackbird Lassy 111
Bell Pioneer 25A
Keys Blackcap 26D
Bell Blackcap 26Y

BW 88 **Adj. 205** 759 **YW** 1324

If you are looking for length, this is your guy. This bull is large framed, strong topped and smooth. He is very fluid in his movement, and has good foot structure. His dam demonstrates all the Pioneer attributes with a great udder, lots of milk, and rib shape. She puts a lot into her calf without losing condition. He ranked near the top of our pen for yearling weights.



BW	WW	YW	MILK	TM	CE	MCE
+1.6	+54	+107	+25	+52	0.0	+4.0

23

KEYS *Acclaim* 241G

Jan. 29, 2019 KEYS 241G 2111334

Jindra 3rd Dimension
Jindra Acclaim
Jindra Blackbird Lassy 111
Hi Low New Elixir 6X
Keys Queen 41B
Bell Queen 41Y

BW 82 **Adj. 205** 663 **YW** 1200

This well-made Acclaim son is level and stout. You can't help but admire his correct structure and shape. He is clean fronted, stylish and has the most depth of body out of the group of Acclaim bulls. He comes from the Queen cow family who has produced long, deep and smoothly made progeny.



BW	WW	YW	MILK	TM	CE	MCE
-0.2	+46	+91	+24	+47	+5.0	+7.0

24

4K ANGUS



SAC *Conversation*



Nov. 12, 2013 IMP 002A

BT Cross over 758N
Silveiras Conversation 8064
 EXG Saras Dream S903 R3
 SAV 004 Predominant 4438
Lafllins Farrah 0252
 Lafllins Farrah 7215

BW +1.5 WW +42 YW +81 MILK +28 TM +49 CE 0.0 MCE +5.0 **BW** 76 **Adj. 205** 888 **Adj. 365** 1502



KEYS *Conversation* 320G

Jan. 30, 2019 KEYS 320G 2111305

Silveiras Conversation 8064
SAC Conversation
 Lafllins Farrah 0252
 Northern View Upward 92Y
Bell Black Lucy 20C
 Bell Black Lucy 16Z

BW 92 **Adj. 205** 630 **YW** 1160

This is our only Conversation bull that we have on offer this year. He is long spined, deep bodied and possesses a real 'angus' look. This bull is smooth, wide based and comes from a moderating sire. We really appreciate this one's depth and shape of rib. His Upward

dam is long, deep, highly maternal and has an excellent udder. She continues to produce favourite calves of ours.



BW	WW	YW	MILK	TM	CE	MCE
+2.5	+34	+70	+25	+42	-2.0	+3.0

ELLEN KEYS
CUSTOM CLIPPING
 SHOW & SALE CATTLE
 EARL GREY, SK
 (306)570-6772

E1

ERIN YEW SIUK
 PHOTOGRAPHY

PHOTOGRAPHY | VIDEO | CATALOG DESIGN



VIEW VIDEOS | BIDDING ONLINE
WWW.FARMGATETIMEDACTIONS.CA



4K ANGUS

DUAL E CATTLE CO.
BOX 495
WYNYARD, SK SOA 4T0



————— *Plan to attend* —————
OPEN HOUSE & BULL PEN PREVIEW

4K ANGUS

Sunday
March 22, 2020

- EARL GREY, SK -

11:00 AM TO 4:00 PM
LUNCH AT NOON



DUAL E CATTLE CO

Saturday
March 28, 2020

- WYNYARD, SK -

11:00 AM TO 4:00 PM
LUNCH AT NOON