

Wilson Lees

16TH VALUE ADDED BULL SALE

Friday, April 3, 2020 - 2:00 PM

Right Cross Ranch Sale Barn, Kisbey, Saskatchewan

(5 kms South of Kisbey on #605 & 4 kms West)

16th Wilson Lees

Value Added Bull Sale

ANNUAL

April 3, 2020 • 2:00 PM

Right Cross Ranch Sale Barn, Kisbey, SK
(5 kms south of Kisbey on #605 & 4 kms west)

Largest Polled Hereford Bull Sale In Canada!



Blair-Athol Polled Herefords

Box 386, Arcola, SK S0C 0G0

Duncan & Val Lees

P/F: 306-455-2619 • C: 306-577-9703

E: blairatholfarms@sasktel.net

Jeff, Grace, Christin, Kylee,

Jackson, Hannah & Josie

C: 306-577-1375

www.blairatholfarms.com



C&T Cattle Company

Box 243, Arcola, SK S0C 0G0

Chris & Tina Lees

Kurt & Cassandra Lees

Tom Lees

P: 306-455-2605 • C: 306-577-7370

Tina: 306-577-1238

Kurt: 306-421-8318

E: ctcattleco@sasktel.net



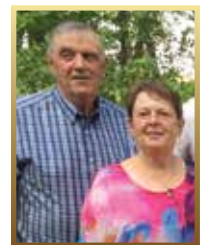
Haroldson's Polled Herefords

Box 372, Wawota, SK S0G 5A0

Lenna, Kristy & Chad Wilson

C: 306-577-1256 F: 306-739-2902

www.haroldsons.com



Glenlees Farm

Box 358, Arcola, SK S0C 0G0

George & Annette Lees

P: 306-455-2612 • F: 306-455-2177

Corey & Tasha; Emma, Kyla & Becca Lees

P: 306-455-2714 • C: 306-577-9971

E: tclees@signaldirect.ca

www.glenlees.com

Sale Staff

Auctioneer

Chris Poley 306-220-5006

Ringside

Shane Michelson, T Bar C 403-363-9973
Ben Wright, T Bar C 519-374-3335
Ken Wray 204-522-6117 or 204-686-2289
Roy Rutledge, Weyburn Livestock 306-642-5358
Dean Martens, Weyburn Livestock 306-485-7494
Judy Finseth, CHA 403-852-0154
Jim Anderson, Right Cross Ranch 306-575-7608
Barry "Junior" Baczuk 306-730-0129

Hereford America

Marc & Jill Hotchkiss 605-490-1513

Sale Day Phones

Sale Barn 306-462-4440
Chris' Cell 306-220-5006
Shane's Cell 403-363-9973
Ben's Cell 519-374-3335

Accommodations

Western Star Hotel, Carlyle 306-453-2700
Bear Claw Casino & Hotel, Carlyle 306-577-4588
Ramada Hotel, Carlyle 866-654-7128 or 306-453-2686
Chapparel Inn, Arcola 306-455-2275
Poplar Tree Inn, Stoughton 306-457-3540

Sale Offering

55 Yearling Hereford Bulls
4 Two Year Old Hereford Bulls

All bulls are semen tested & vet inspected

Free delivery up to 300 miles, anything further will be at a cost



Chris Poley
306-220-5006



Shane Michelson
403-363-9973



Ben Wright
519-374-3335

Chris Poley

View the catalogue online at www.buyagro.com

Please bring this catalogue with you to the sale

Insurance

Alameda Agencies, Bonnie Thompson 306-489-2258
or 306-483-7311

Delivery

Wilson Lees bulls will be delivered free up to 300 miles at our convenience, considering load co-ordination. Further delivery will be at a cost. Every assistance will be made to get your bull or bulls in your yard. If you can't handle your bull until later in the season, arrangements can be made with the owners. A daily feeding charge of \$4/day after May 1st will apply.

Volume Buyer Discount

Buy 2 Bulls for a 3% Discount
Buy 3 or More Bulls for a 5% Discount

Payment Plan

Pay half the purchase price on sale day with the balance on a post-dated cheque for May 15, 2020.

Site Unseen Purchase Program

We understand in today's high tech world of social media, Twitter, Facebook and so on, it seems to become harder and harder to physically accomplish all that needs to be done in a day or a week. As we know that many of us have other jobs besides the cow business, not to mention young families involved in hockey, curling, dance, gymnastics and the list goes on, sale day is always an option. The four outfits from Wilson/Lees have been raising Purebred Polled Herefords for three, four and five generations. We know what works! Tell us what you need; growth, hair performance, calving ease or whatever and we will do our utmost to fix your outfit with the bull you need. Feel free to call any of the owners; the guys who bred them, fed them and stand behind them. If you feel more comfortable placing your bid with any of our sales staff, we have confidence in their integrity and overall appraisal.

From the desk at T Bar...

Welcome to the 16th Annual Wilson Lees Value Added Bull sale on April 3rd at the Right Cross Ranch Sale Facility, Kisbey, Saskatchewan. So...what do you call a sale with four of Canada's leading Polled Hereford producers involved...awesome! This bull sale was established in the BSE era and has come full circle to be one of, if not, the sire source in the Hereford industry.

I must congratulate Chris Lees, President of Canadian Western Agribition for a great show ending the decade and his involvement with the fiftieth. It's ironic that your late father, Tom, was involved in the initial planning of CWA...if only if he could see it today.

These four multi-generational families have sold a lot of seedstock throughout their history, provincially, nationally and internationally. What makes this sale a great place to shop for your next herd bull is the depth of their cowherds. Each program introduces at least one new herd sire annually, giving their customers new genetics to add value to their programs.

Competitive...hell yes! Each of these programs are always competitive when they go to town. Congratulations to Chad Wilson and the Haroldson's crew on winning Premier Breeder at Agribition for the ninth consecutive year...a record that will be difficult to top in the Polled Hereford breed.

The lineup of bulls for this sale is by far the strongest to date. Rugged, with shape, muscle, hair and testicle with many having a degree of calving ease. Headlining the event are the Reserve Junior Bull Calf Champion and the Reserve Senior Bull Calf Champion from Agribition. Check out the incentives that the boys are offering...delivery, a payment plan and discounts on volume.

The livestock industry needs a larger amount of Hereford influence in the commercial pastures, since the benefits that Herefords add to the industry is difficult to ink on paper, old cowboys assume it, while young cowboys need to learn it!

On a note of sadness, we offer our condolences to Duncan and Chris with the loss of their mother this past winter and we all lost a good friend at Christmas time...the unique Ross Madsen.

If we may be of assistance, prior to or sale day, feel free to contact any of the T Bar team or myself, we will help you in a professional manner.



Box 2330
Warman, SK
S0K 4S0

Phone: (306) 933-4200
Fax: (306) 934-0744
info@tbarc.com



Enhance 26G - Lot 1

The high performing bull in the pen post weaning. Tremendous length of body, strength of top and an abundance of muscle shape. Combined with this performance he his highly maternal as well. This is a true beef bull and he won't be hard to find sale day!

1

GLENLEES DBK 8Y *Enhance* 26G

PC03066424 AHL 26G FEB. 13, 2019 POLLED

SHF WONDER M326 W18 ET
 NJW 73S W18 HOMEGROWN 8Y ET
 NJW P606 72N DAYDREAM 73S

| BW | WW | MAR 3/20 | EPDS | BW | WW | YW | MILK | TM |
|---------|----------|-----------|------|-----|------|------|------|------|
| 90 lbs. | 860 lbs. | 1378 lbs. | | 4.1 | 58.2 | 98.3 | 36.5 | 65.6 |

FTF PROSPECTOR 145Y
 BNC GLENLEES 145 TAYLOR 30D
 BNC 804 WILDA 1142B



Regard 73G - Lot 2

Really like the herd bull look to this guy. Explosive in his hip, soggy made and sound. Mother is extremely good uddered. A maternal brother is presently working for Jason Steeves at Carnduff.

2

GLENLEES 8Y *Regard* 73G

PC03066432 AHL 73G MAR. 2, 2019 POLLED

SHF WONDER M326 W18 ET
 NJW 73S W18 HOMEGROWN 8Y ET
 NJW P606 72N DAYDREAM 73S

| BW | WW | MAR 3/20 | EPDS | BW | WW | YW | MILK | TM |
|---------|----------|-----------|------|-----|------|------|------|------|
| 89 lbs. | 724 lbs. | 1155 lbs. | | 3.5 | 49.7 | 83.5 | 30.7 | 55.6 |

REMITALL TIMEKEEPER 129T
 GLENLEES 129T VICTORY 96X
 GHC MISS VICTORY 126N

3

GLENLEES J 68E *Rapid* 95G

PC03061735 AHL 95G MAR. 12, 2019 POLLED

TH 71U 17Y MOUNTAINEER 420A

ANL 420A MOUNTAINEER 787X 68E

VG KLONDIKE KATE 787X

GOLDEN-OAK 4J MAXIUM 28M

GLENLEES KDY 28M PROSPECT 31Y

GLENLEES KY19R PROSPECT ET 54U

| BW | WW | MAR 3/20 | EPDS | BW | WW | YW | MILK | TM |
|---------|----------|-----------|------|-----|------|------|------|------|
| 93 lbs. | 788 lbs. | 1165 lbs. | | 4.9 | 53.8 | 88.5 | 16.4 | 43.3 |

A really good bull that is hard to fault. Explosive in his hip structure, big middled and that herd bull look. His mother is an excellent uddered cow sired by Maxi. Maternal brother sold to Hebert Livestock in last year's sale.



Rapid 95G - Lot 3

4

GLENLEES BNC 27C *Intact* 8G

PC03066007 AHL 8G FEB. 5, 2019 POLLED

NJW 76S P20 BEEF 38W ET

NJW 73S 38W RIMROCK 27C ET

NJW P606 72N DAYDREAM 73S

BNC 118U JUDGE 111Y

BNC 111Y NELLIE 308A

BNC R117 NELLIE ET 401Y

| BW | WW | MAR 3/20 | EPDS | BW | WW | YW | MILK | TM |
|---------|----------|-----------|------|-----|------|------|------|------|
| 84 lbs. | 934 lbs. | 1348 lbs. | | 2.8 | 53.6 | 83.0 | 29.9 | 56.7 |

A maternal brother to the 2017 Champion Female at Agribition and Miss Hereford World, Nellie 71D! Rob Flack, Dorbay Polled Herefords, is a partner with us on this guy's full brother as well, Impact. This bull carries a lot of performance, muscle and is backed by some solid genetics..



Intact 8G - Lot 4

5

GLENLEES 156 *Diablo* 15G

PC03066009 AHL 15G FEB. 8, 2019 POLLED

NJW 76S 4037 DURANGO SPIRIT 174X

NJW 103Y 174X DIABLO 156C ET

NJW 101U 100W SPIRITQUEEN103Y

TH 809T 14Z PLAYMAKER 80B

GLENLEES 80B LADY 11E

GLENLEES 101S LADY 45U

| BW | WW | MAR 3/20 | EPDS | BW | WW | YW | MILK | TM |
|---------|----------|-----------|------|-----|------|------|------|------|
| 76 lbs. | 778 lbs. | 1230 lbs. | | 2.3 | 48.1 | 76.5 | 25.8 | 49.9 |

Here's a bull out of a first calf 80B daughter and what a job she did on her first go. A Diablo son that has extra middle and designed just right for calving ease. Don't be afraid to turn him loose on a group of heifers with his modest 76 lb. birth weight.



Diablo 15G - Lot 5



A feature bull for us here. Element's mother was the 2018 Champion Female at Agribition and Miss Hereford World as well, Cameo Girl 45C! You have to admire the muscle shape, middle and true herd bull presence this bull has. Extra pigment and dark in color.



Dam of Lot 6

Element 118G - Lot 6

6

GLENLEES 6C *Element* 118G

PC03062271 AHL 118G MAR. 25, 2019 POLLED

NJW FHF 9710 TANK 45P

BLAIR'S 45P 33W SOUTHPAW ET 6C

HAROLDSON'S TEMPTRESS T100 33W

| BW | WW | MAR 3/20 | EPDS | BW | WW | YW | MILK | TM |
|---------|----------|-----------|------|-----|------|------|------|------|
| 90 lbs. | 734 lbs. | 1115 lbs. | | 4.2 | 57.2 | 89.8 | 23.2 | 51.8 |

MHPH 521X ACTION 106A

RVP 106A CAMEO GIRL 45C

PCL QUEEN MAKER 118U 61Z



The sire of this guy, South Paw, is just getting started here. In his first set of calves he has showed us the consistency of quality that he is breeding for us. This bull's mother is a near perfect uddered female still at the age of eight. Really maternal pedigree with Tahoe, Tank, Tundra and Major. A real complete individual.

All Rise 137G - Lot 7

7

GLENLEES 6C *All Rise* 137G

PC03066035 AHL 137G APR. 6, 2019 POLLED

NJW FHF 9710 TANK 45P

BLAIR'S 45P 33W SOUTHPAW ET 6C

HAROLDSON'S TEMPTRESS T100 33W

| BW | WW | MAR 3/20 | EPDS | BW | WW | YW | MILK | TM |
|---------|----------|-----------|------|-----|------|------|------|------|
| 90 lbs. | 758 lbs. | 1140 lbs. | | 4.4 | 51.3 | 84.5 | 23.6 | 49.3 |

TH 200J 63N TUNDRA 110X

GLENLEES KDY 110X MARY 94Z

GLENLEES 101N MARY 2U



GLENLEES BNC 6C *Update* 130G

PC03066034 AHL 130G APR. 2, 2019 POLLED

NJW FHF 9710 TANK 45P

BLAIR'S 45P 33W SOUTHPAW ET 6C

HAROLDSON'S TEMPTRESS T100 33W

TH 71U 719T MR HEREFORD 11X

BNC 11X ELISE 129A

SQUARE-D 362T TAYLOR 1142Y

| BW | WW | MAR 3/20 | EPDS | BW | WW | YW | MILK | TM |
|---------|----------|-----------|------|-----|------|------|------|------|
| 92 lbs. | 740 lbs. | 1072 lbs. | | 4.0 | 53.2 | 82.4 | 28.2 | 54.8 |

Tremendous amount of length of body in this guy. Big hipped, hairy and possesses the extra coloring we all like. His Mr. Hereford mother is a really hard-working cow that is also red eyed and red to the ground.



Update 130G - Lot 8



GLENLEES 68E *Mountain* 91G

PC03066084 AHL 91G MAR. 11, 2019 POLLED

TH 71U 17Y MOUNTAINEER 420A

ANL 420A MOUNTAINEER 787X 68E

VG KLONDIKE KATE 787X

WLB WINCHESTER EASY RIDE 27B

BNC GLENLEES 27B JENNY 94D

BIRD'S-HILL JENNY 219Z

| BW | WW | MAR 3/20 | EPDS | BW | WW | YW | MILK | TM |
|---------|----------|-----------|------|-----|------|------|------|------|
| 87 lbs. | 710 lbs. | 1052 lbs. | | 4.8 | 53.3 | 88.8 | 21.0 | 47.7 |

Really like the completeness and coloring this guy offers. These Mountaineers will sire easy feeding kind of cattle. The Easy Ride X Mountaineer mating really worked well.



Mountain 91G - Lot 9



GLENLEES BNC 27C *Torque* 40G

APPLIED FOR AHL 40G FEB. 16, 2019 POLLED

NJW 76S P20 BEEF 38W ET

NJW 73S 38W RIMROCK 27C ET

NJW P606 72N DAYDREAM 73S

SHF WONDER M326 W18 ET

BNC W18 KAYLEE 8Z

BNC 288G KAYLEE 214U

| BW | WW | MAR 3/20 | PE | BW | WW | YW | MILK | TM |
|---------|----------|-----------|----|-----|------|------|------|------|
| 84 lbs. | 726 lbs. | 1152 lbs. | | 3.5 | 55.1 | 85.4 | 31.2 | 58.7 |

Lots of pigment and red in this guy and his mother is the same way. Rimrock has made his mark here at Glenlees and will be a building block for us in years to come. A candidate to use on some heifers.



Torque 40G - Lot 10



Duty Calls 19G - Lot 11

Herd bull presence about this guy. Awesome muscle shape, power, length and middle about him. The Heavy Duty daughters in production are making excellent cows. He was the Champion Bull at the 2019 S.E. Zone Field Day.

11

GLENLEES 72C *Duty Calls* 19G

PC03061734 AHL 19G FEB. 10, 2019 POLLED

NJW 67U 28M BIG MAX 22Z
NJW 79Z 22Z HEAVY DUTY 72C ET
 BW 91H 100W RITA 79Z ET

| BW | WW | MAR 3/20 | EPDS | BW | WW | YW | MILK | TM |
|---------|----------|-----------|------|-----|------|------|------|------|
| 88 lbs. | 938 lbs. | 1350 lbs. | | 3.6 | 54.1 | 89.5 | 24.5 | 51.6 |

HAROLDSON'S JVJ MASTER 18L 8W
GLENLEES 8W KIA 24Z
 HHPH NAVARRO KIA 2U



Rogue 44G - Lot 12

Real soggy made Homegrown son here. Fully pigmented and backed by a real strong cow family, the Libbys. A maternal brother sold to Gene Davis at North Portal last year. A lot of future and good in this beef bull.

12

GLENLEES 8Y *Rogue* 44G

PC03066426 AHL 44G FEB. 19, 2019 POLLED

SHF WONDER M326 W18 ET
NJW 73S W18 HOMEGROWN 8Y ET
 NJW P606 72N DAYDREAM 73S

| BW | WW | MAR 3/20 | EPDS | BW | WW | YW | MILK | TM |
|---------|----------|-----------|------|-----|------|------|------|------|
| 94 lbs. | 744 lbs. | 1270 lbs. | | 4.4 | 52.5 | 90.0 | 35.2 | 61.5 |

HAROLDSONS WLC JACK ET 57Y
GLENLEES 57Y LIBBY 14B
 WTK ANL 705G LIBBY 114P

13

GLENLEES 68E *Official* 39G

PC03066016 AHL 39G FEB. 16, 2019 POLLED

TH 71U 17Y MOUNTAINEER 420A

ANL 420A MOUNTAINEER 787X 68E

VG KLONDIKE KATE 787X

WLB WINCHESTER EASY RIDE 27B

GLENLEES 27B SUMA 74D

BAR-H 16K SUMA 20N

| BW | WW | MAR 3/20 | EPDS | BW | WW | YW | MILK | TM |
|---------|----------|-----------|------|-----|------|------|------|------|
| 93 lbs. | 782 lbs. | 1165 lbs. | | 5.7 | 54.3 | 88.1 | 18.9 | 46.1 |

This is our first group to sell off the Mountaineer bull. They are explosive hipped and easy feeding kind of cattle. You have to admire the length of body and width of top in this guy. Backed by a cow family with superior udders.



Official 39G - Lot 13

14

GLENLEES 68E *Mounty* 68G

PC03066056 AHL 68G FEB. 27, 2019 POLLED

TH 71U 17Y MOUNTAINEER 420A

ANL 420A MOUNTAINEER 787X 68E

VG KLONDIKE KATE 787X

HAROLDSONS WLC JACK ET 57Y

GLENLEES 57Y ART WORK 115A

RVP STAR 122L ART WORK ET 35W

| BW | WW | MAR 3/20 | EPDS | BW | WW | YW | MILK | TM |
|---------|----------|-----------|------|-----|------|------|------|------|
| 98 lbs. | 688 lbs. | 1100 lbs. | | 6.3 | 57.0 | 98.1 | 19.2 | 47.7 |

A really complete, soggy made Mountaineer son. Pigmented and short marked. The Art Work family originated from a cow that we purchased from River Valley in Ontario.



Mounty 68G - Lot 14

15

GLENLEES BNC 4040 *Barcode* 17G

PC03066010 AHL 17G FEB. 9, 2019 POLLED

TH 22R 16S LAMBEAU 17Y

BOYD FT KNOX 17Y XZ5 4040

DOSS MY EYES ADORE U DHZ5

BNMHPH 13P HEAT 101S

BNC 101S ECLIPSE 1A

PLPH BNC 4L ECLIPSE 203U

| BW | WW | MAR 3/20 | EPDS | BW | WW | YW | MILK | TM |
|---------|----------|-----------|------|-----|------|------|------|------|
| 80 lbs. | 808 lbs. | 1180 lbs. | | 1.5 | 48.3 | 74.3 | 18.9 | 43.1 |

The sire of this calf, Fort Knox, is a calving ease specialist and his daughters have beautiful udders. This bull is long bodied and clean made and would be an option to use on some heifers. A nice 80 lb. birth weight.



Barcode 17G - Lot 15



A smooth made Connected son with a very good producing cow family behind him.
Heifer approved.



Gatling 11G - Lot 16

16

C&T AYWON 24E *Gatling 11G*

PC03063148 TL 11G FEB. 23, 2019 POLLED

REMITALL-W 50 SHADES ET 12C

REMITALL-W CONNECTED ET 24E

REMITALL-WEST YELLOW ROSE 2Y

| BW | PE | BW | WW | YW | MILK | TM |
|---------|----|-----|------|------|------|------|
| 82 lbs. | | 3.2 | 51.9 | 80.3 | 23.0 | 48.8 |

MHPH 118U ZAPPA 218Z

C&T AYWON 218Z JESS 9D

C&T AYWON 9500 LITTLE J 5B



A meaty, wide topped, pigmented and speckle faced Connected son. Out of one of our most prolific cow families. His dam is a heavy milking Stetson out of an equally heavy milking Nasdaq! Combine that with Connected's stacked pedigree and you have a dynamite combo for meat, muscle, and milk!



Connected 24E - Sire

Gold Member 36G - Lot 17

17

C&T AYWON 24E *Gold Member 36G*

APPLIED FOR TL 36G MAR. 14, 2019 POLLED

REMITALL-W 50 SHADES ET 12C

REMITALL-W CONNECTED ET 24E

REMITALL-WEST YELLOW ROSE 2Y

| BW | PE | BW | WW | YW | MILK | TM |
|---------|----|-----|------|------|------|------|
| 90 lbs. | | 3.4 | 53.4 | 83.9 | 23.2 | 55.1 |

MHPH 13P STETSON 102S

C&T 102S BARBIE 1A

C&T P316 SOPHIE 5X



Smooth made, stout and deep. This guy is very eye appealing. The Stokers are plain damn good. Bulls are thick and hairy. Females have beautiful udders with awesome milk flow. 2020 will be Stroker's last calf crop at C&T.



Gunner 27G - Lot 18

18

C&T KL Z81 *Gunner* 27G

PC03063207 CTCL 27G MAR. 15, 2019 POLLED

STAR STROKE O'GENIUS 91X

MOHICAN STROKER Z81

RVP 45S SWEET ULYA 41U

| BW | PE | BW | WW | YW | MILK | TM |
|---------|----|-----|------|------|------|------|
| 96 lbs. | | 2.9 | 48.6 | 82.6 | 20.5 | 44.8 |

GHR MILLIONAIRE 10E 25M

MCCOY 25M MELODY 21X

MCCOY 32K MELODY 136P



This guy is solid and thick and only an April calf!! He will add stoutness, shape, muscle pattern and hair! Longevity runs in his cow family. His Nasdaq dam, 41T, is still producing and we have four daughters in herd here at C&T. 45G is sired by Zappa and his daughters have tight, level udders with great milk flow. Geno is an easy pick if you want meat and milk. **Heifer approved.**

Geno 45G - Lot 19

19

C&T 218Z *Geno* 45G

PC03063164 TL 45G APR. 2, 2019 POLLED

MHPH 101S UMPIRE 118U

MHPH 118U ZAPPA 218Z

GHC-TABOO-TCF MISS KAREN 4T

| BW | PE | BW | WW | YW | MILK | TM |
|---------|----|-----|------|------|------|------|
| 88 lbs. | | 3.5 | 46.3 | 74.0 | 19.1 | 42.3 |

PW MOHICAN NASDAQ P316

C&T P316 TATUM 41T

C&T ASTER 1E



Groundcover 9G - Lot 20

20

C&T RIMROCK *Groundcover* 9G

PC03063156 TL 9G FEB. 23, 2019 POLLED

NJW 76S P20 BEEF 38W ET

NJW 73S 38W RIMROCK 27C ET

NJW P606 72N DAYDREAM 73S

GHC SPOT LIGHT 39S

TWIN-VIEW 39S KENZI 18B

TWIN-VIEW 4L CELESTE 8X

| BW | PE | BW | WW | YW | MILK | TM |
|---------|----|-----|------|------|------|------|
| 95 lbs. | | 2.2 | 51.7 | 80.0 | 22.9 | 54.7 |

A long sided, dark coloured RimRock son. RimRock is making his mark at Blair-Athol and Glenlees. He was one of the most heavily used bulls in 2019 at Ned and Jan Wards.



General 20G - Lot 21

21

C&T 106A *General* 20G

APPLIED FOR TL 20G MAR. 5, 2019 POLLED

TH 122 71I VICTOR 521X ET

MHPH 521X ACTION 106A

MHPH 301W DAINTY 205Y

C&T 12R CLASSIC 57W

C&T 57W SPIC 19Z

C&T BB3K RHODA 2R

| BW | PE | BW | WW | YW | MILK | TM |
|---------|----|-----|------|-------|------|------|
| 97 lbs. | | 5.2 | 63.6 | 104.9 | 15.8 | 47.6 |

Deep, dark and stout. This is a Medonte Action son out of a big volumed, heavy milking cow. He is sure to push the scales down.



Gangster 34G - Lot 22

22

C&T Z81 *Gangster* 34G

PC03063168 VOB 34G MAR. 12, 2019 POLLED

STAR STROKE O'GENIUS 91X ET

MOHICAN STROKER Z81

RVP 45S SWEET ULYA 41U

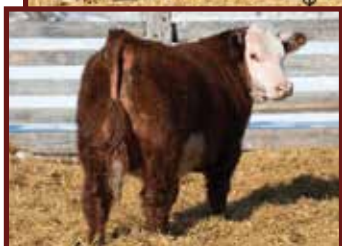
C&T 86P WAGER 79W

C&T 79W TESS 86Z

C&T 36N TESS 48U

| BW | PE | BW | WW | YW | MILK | TM |
|---------|----|-----|------|------|------|------|
| 95 lbs. | | 3.7 | 44.2 | 79.0 | 19.3 | 41.4 |

A rancher's kind of bull sired by Stroker. Deep sided and deep flanked. Tons of hair, short marked and pigmented. This big guy will leave impressive calves. There is only one more crop of Stroker calves left to hit the ground as the old boy went to town.



Haroldson's Polled Herefords



Insight 7G - Lot 23

This red eyed, Insight son is very complete made with some added hip shape. His mother is a full sister to our Traction herd sire and is now in our donor pen.

Heifer Approved.

23

HAROLDSON'S *Insight* 201D 7G

PC03061887 AFSY 7G FEB. 2, 2019 POLLED

CHURCHILL RED BULL 200Z

HAROLDSON'S INSIGHT ET 201D

TL 5073 JESSICA 751U

| BW | EPDS | BW | WW | YW | MILK | TM |
|---------|------|-----|------|------|------|------|
| 86 lbs. | | 4.1 | 56.8 | 88.0 | 27.4 | 55.8 |

R LEADER 6964

HAROLDSON'S MARVEL ET 47E

HAROLDSON'S MARVEL 45P 5W



Pavati 48G - Lot 24

Pavati is a bull that's always been at the top of my list. Big topped and stout made with a great look. He is very sound structured with an amazing foot. The Rhino daughters are beautiful uddered with tremendous milk flow. He was Reserve Junior Calf at CWA last fall. Pavati will be a big part of our program.

Homo Polled.

24

HAROLDSON'S SCC *Pavati* 48G

PC03061874 AFSY 48G MAR. 14, 2019 POLLED

R LEADER 6964

HAROLDSON'S TRACTION ET 50E

HAROLDSON'S MARVEL 45P 5W

| BW | EPDS | BW | WW | YW | MILK | TM |
|---------|------|-----|------|------|------|------|
| 86 lbs. | | 3.3 | 55.8 | 84.0 | 22.9 | 50.8 |

HAROLDSONS WLC RHINO ET 48Y

HAROLDSON'S WSF LASSIE 48Y 42C

HAROLDSON'S LASSIE 425X 22Z

Haroldson's Polled Herefords



Traction 55G - Lot 25

25

HAROLDSON'S WS *Traction* 55G

PC03061881 AFSY 55G MAR. 17, 2019 POLLED

R LEADER 6964

HAROLDSON'S TRACTION ET 50E

HAROLDSON'S MARVEL 45P 5W
TH 89T 743 UNTAPPED 425X ET

HAROLDSON'S LASSIE 425X 22Z

GHC MISS LASSIE 3L

| BW | EPDS | BW | WW | YW | MILK | TM |
|---------|------|-----|------|------|------|------|
| 92 lbs. | | 3.3 | 50.6 | 74.3 | 19.9 | 45.2 |

This Traction son is very soft made with that extra fleshing ability. He will do an excellent job siring both sexes.



Traction 68G - Lot 26

26

HAROLDSON'S *Traction* 50E 68G

PC03061886 AFSY 68G MAR. 22, 2019 POLLED

R LEADER 6964

HAROLDSON'S TRACTION ET 50E

HAROLDSON'S MARVEL 45P 5W
NJW FHF 9710 TANK 45P

HAROLDSON'S ERIN 45P ET 19C

HAROLDSON'S ERIN 16R ET 20W

| BW | EPDS | BW | WW | YW | MILK | TM |
|---------|------|-----|------|------|------|------|
| 89 lbs. | | 3.0 | 54.3 | 82.6 | 25.8 | 53.0 |

Another Traction with some added performance. This bull is fault free with a lot of middle and shape from behind.



Pioneer 41G - Lot 27

27

HAROLDSON'S *Pioneer* ET 41G

PC03068460 AFSY 41G MAR. 8, 2019 POLLED

TH 89T 755T STOCKMAN 475Z

TH 403A 475Z PIONEER 358C ET

TH 71U 17Y RITA 403A
NJW FHF 9710 TANK 45P

HAROLDSON'S MARVEL 45P 5W

REMITALL MARVEL 190S

| BW | EPDS | BW | WW | YW | MILK | TM |
|---------|------|-----|------|-------|------|------|
| 94 lbs. | | 7.1 | 74.7 | 120.3 | 27.2 | 64.6 |

This Pioneer bull is really long sided and powerful with a lot of performance. His full sisters were a highlight in the female sale last fall. If you want to add some pounds, here he is.

Haroldson's Polled Herefords



Insight 49G - Lot 28

This bull has a lot to offer. He is very complete made with a big top and is very stout when you get behind him. His mother has been our "go to" donor female and his full sister was our high selling female last fall.

Homo Polled
Heifer Approved.

28

HAROLDSON'S *Insight* ET 49G

PC03065374 AFSY 49G MAR. 14, 2019 POLLED

CHURCHILL RED BULL 200Z

HAROLDSON'S INSIGHT ET 201D

TL 5073 JESSICA 751U

| BW | EPDS | BW | WW | YW | MILK | TM |
|---------|------|-----|------|------|------|------|
| 86 lbs. | | 3.4 | 54.2 | 94.7 | 27.9 | 55.0 |

HAROLDSONS WLC RHINO ET 48Y

HAROLDSON'S HLV MARVEL 48Y 12B

HAROLDSON'S MARVEL 45P 5W



Pavati 48G - Lot 24

Red Zone is stout made, high performing and easy doing with huge nuts. He is a bull that puts a lot of good together in one package. His mother has been a tremendous producer. He was Reserve Senior Bull Calf last fall at CWA.

29

HAROLDSON'S SCC *Red Zone* 16G

PC03061870 AFSY 16G FEB. 12, 2019 POLLED

SR CG HARD ROCK 5073

HAROLDSON'S RED ZONE ET 41D

HAROLDSON'S MARVEL 45P 5W

| BW | EPDS | BW | WW | YW | MILK | TM |
|---------|------|-----|------|------|------|------|
| 92 lbs. | | 3.7 | 51.3 | 77.0 | 23.8 | 49.5 |

TH 122 71I VICTOR 521X ET

HAROLDSON'S MADONNA 521X 3Z

HAROLDSON'S WLC MADONNA ET 8N

Haroldson's Polled Herefords



Redzone 86G - Lot 30

30

HAROLDSON'S LH *Redzone* 86G

PC03066133 AFSY 86G APR. 2, 2019 POLLED

SR CG HARD ROCK 5073

HAROLDSON'S RED ZONE ET 41D

HAROLDSON'S MARVEL 45P 5W

GOLDEN-OAK OUTCROSS 18U

HAROLDSON'S JESSICA 18U ET 8B

TL 5073 JESSICA 751U

| BW | EPDS | BW | WW | YW | MILK | TM |
|---------|------|-----|------|------|------|------|
| 85 lbs. | | 3.7 | 52.8 | 84.7 | 26.5 | 52.9 |

An April bull calf here that is long sided with an abundance of shape. He is vey sound with a great presence to him.



Game Day 15G - Lot 31

31

HAROLDSON'S AD *Game Day* 15G

APPLIED FOR AFSY 15G FEB. 11, 2019 POLLED

KJ HVH 33N REDEEM 485T ET

H BK CCC SR GAME CHANGER ET

NJW 78P 63N LADYSPORT 51W ET

HAROLDSON'S WLL ANCHOR 4T

HAROLDSONS JESSICA ET 71A

TL 5073 JESSICA 751U

| BW | PE | BW | WW | YW | MILK | TM |
|---------|----|-----|------|------|------|------|
| 92 lbs. | | 5.6 | 59.7 | 95.2 | 24.5 | 54.4 |

This Game Changer son is a bull that the more you analyze the more you will like. He's big bodied, stout made, big boned and sound.



Red Zone 47G - Lot 32

32

HAROLDSON'S *Red Zone* 41D 47G

PC03063609 AFSY 47G MAR. 13, 2019 POLLED

SR CG HARD ROCK 5073

HAROLDSON'S RED ZONE ET 41D

HAROLDSON'S MARVEL 45P 5W

BOYD MASTERPIECE 0220

HAROLDSON'S WLC MIRA ET 50B

HAROLDSON'S 37H MIRA ET 62K

| BW | EPDS | BW | WW | YW | MILK | TM |
|---------|------|-----|------|------|------|------|
| 85 lbs. | | 3.0 | 48.8 | 80.2 | 24.5 | 48.9 |

Another Red Zone with great cosmetics and added performance. Certainly some added pigment and color in this guy's pedigree.

33

HAROLDSON'S *Totem* 5D ET 30G

PC03065371 AFSY 30G MAR. 1, 2019 POLLED

CHURCHILL RED BULL 200Z

HAROLDSON'S TOTEM 200Z 5D

BLAIR'S NELLIE R117 ET 5B

NJW FHF 9710 TANK 45P

HAROLDSON'S MARVEL 45P 5W

REMITALL MARVEL 190S

| BW | EPDS | BW | WW | YW | MILK | TM |
|---------|------|-----|------|------|------|------|
| 84 lbs. | | 2.5 | 50.8 | 75.5 | 26.9 | 52.3 |

This Totem son is moderate framed and easy doing. I like the shape and style which the bull possesses.

Heifer Approved.



Totem 30G - Lot 33

34

HAROLDSON'S *Insight* ET 51G

PC03065375 AFSY 51G MAR. 14, 2019 POLLED

CHURCHILL RED BULL 200Z

HAROLDSON'S INSIGHT ET 201D

TL 5073 JESSICA 751U

HAROLDSONS WLC RHINO ET 48Y

HAROLDSON'S HLV MARVEL 48Y 12B

HAROLDSON'S MARVEL 45P 5W

| BW | EPDS | BW | WW | YW | MILK | TM |
|---------|------|-----|------|------|------|------|
| 86 lbs. | | 2.3 | 53.3 | 94.0 | 27.9 | 54.6 |

This ET Insight son is very complete made. He is very sound structured and you really admire him in motion. He is out of the great Marvel cow family.

Heifer Approved.

Homo Polled.

Full brother to Lot 28.



Insight 51G - Lot 34

35

HAROLDSON'S *Insight* 201D 26G

PC03063599 AFSY 26G FEB. 26, 2019 POLLED

CHURCHILL RED BULL 200Z

HAROLDSON'S INSIGHT ET 201D

TL 5073 JESSICA 751U

HARVIE RAFTSMAN 16R

HAROLDSON'S ERIN 16R ET 20W

HAROLDSON'S 37H MIRA ET 62K

| BW | EPDS | BW | WW | YW | MILK | TM |
|---------|------|-----|------|------|------|------|
| 86 lbs. | | 1.8 | 48.9 | 82.5 | 23.4 | 47.9 |

Here is an Insight with a lot of length of body and has a great presence to him. Very fault free and sound structured.

Heifer Approved.



Insight 26G - Lot 35

Haroldson's Polled Herefords



Insight 9G - Lot 36

36

HAROLDSON'S *Insight* 201D 9G

APPLIED FOR AFSY 9G FEB. 3, 2019 POLLED

CHURCHILL RED BULL 200Z

HAROLDSON'S INSIGHT ET 201D

TL 5073 JESSICA 751U

HAROLDSON'S RENEGADE ET 21C

HAROLDSON'S REESE 107E

HAROLDSONS JVJ REESE 120X 52A

| BW | PE | BW | WW | YW | MILK | TM |
|---------|----|-----|------|------|------|------|
| 83 lbs. | | 4.4 | 52.6 | 88.2 | 26.6 | 52.9 |

This bull is long bodied and sound made.
Heifer Approved.



Red Zone 69G - Lot 37

37

HAROLDSON'S *Red Zone* 69G

PC03068487 AFSY 69G MAR. 22, 2019 POLLED

SR CG HARD ROCK 5073

HAROLDSON'S RED ZONE ET 41D

HAROLDSON'S MARVEL 45P 5W

TH 89T 743 UNTAPPED 425X ET

HAROLDSONS ZENA 425X 47Z

MCCOY 532M ZENA 26R

| BW | PE | BW | WW | YW | MILK | TM |
|---------|----|-----|------|------|------|------|
| 89 lbs. | | 5.6 | 53.6 | 81.9 | 21.5 | 48.4 |

Complete made, Red Zone son with a great coat of hair.



Liner 75G - Lot 38

38

HAROLDSON'S *Liner* 81C 75G

PC03068488 AFSY 75G MAR. 26, 2019 POLLED

H PF WYARNO 3902 ET

HAROLDSON'S WLC INSIGHT 81C

HAROLDSONS RYTHYM T100 21Z

HAROLDSONS WLC MOTIVE ET 41Y

HAROLDSON'S MS BOOMER 41Y 87B

H MISS BOOMER 9082 5111 ET

| BW | EPDS | BW | WW | YW | MILK | TM |
|---------|------|-----|------|------|------|------|
| 94 lbs. | | 3.7 | 51.4 | 85.3 | 26.5 | 52.2 |

This end of March bull is really big bodied and displays great masculinity for his age.

Haroldson's Polled Herefords



Totem 49F - Lot 39

Totem 49F is a good headed, big barreled bull that has that extra shape to his stifle and quarter. He is part of a very popular flush and is a bull we kept to use on our heifers last year.

Heifer Approved.

39

HAROLDSON'S *Totem* ET 49F

PC03056480 AFSY 49F MAR. 20, 2018 POLLED

CHURCHILL RED BULL 200Z

HAROLDSON'S TOTEM 200Z 5D

BLAIR'S NELLIE R117 ET 5B

| BW | EPDS | BW | WW | YW | MILK | TM |
|---------|------|-----|------|------|------|------|
| 84 lbs. | | 3.2 | 51.7 | 88.9 | 26.4 | 52.3 |

HAROLDSONS WLC RHINO ET 48Y

HAROLDSON'S HLV MARVEL 48Y 12B

HAROLDSON'S MARVEL 45P 5W



Liner 73F - Lot 40

This horned bull is very good footed and sound structured. He is a deep sided bull that is very fault free.

40

HAROLDSON'S *Liner* 81C 73F

C03068459 AFSY 73F MAR. 31, 2018 HORNED

H PF WYARNO 3902 ET

HAROLDSON'S WLC INSIGHT 81C

HAROLDSONS RYTHYM T100 21Z

| BW | PE | BW | WW | YW | MILK | TM |
|---------|----|-----|------|------|------|------|
| 92 lbs. | | 4.1 | 52.0 | 87.7 | 24.3 | 50.4 |

SHF TAHOE R117 T100

HAROLDSON'S LUCY T100 80X

HAROLDSON'S LUCY LU 2Z ET 47L

Blair-Athol Polled Herefords



Sargent 91G - Lot 41

Lots of bone and hair with tons of performance in this first son to sell by the \$11,000 McCoy Patent sire. Dam is easy doing and consistent with a perfect udder. His calves will have that added pay weight.

UNASSISTED

Pigment:

Left Eye: 50% Right Eye: 30%

41

BLAIR-ATHOL 124E *Sargent* 91G

PC03059454 DVL 91G MAR. 11, 2019 POLLED

MCCOY 70Y SKYFALL 53A

MCCOY 53A PATENT 124E

MCCOY 719T SUSIE ET 417B

| BW | WW | EPDS | BW | WW | YW | MILK | TM |
|-------------------------------|----------|------|-----|------|-------|------|------|
| 104 lbs. | 1040 lbs | | 6.6 | 62.6 | 106.9 | 24.0 | 55.3 |
| HF 4L BEYOND 36N | | | | | | | |
| RU BA 36N LANTEEN 221Z | | | | | | | |
| RU 79C LANTEEN 43L | | | | | | | |



Hustler 19G - Lot 42

Hustler 19G is the cowboy's kind. Easy fleshing, thick, lots of mass and hair. All kinds of athleticism. There is no limit to this guy's potential.

UNASSISTED

Heifer Approved.

Pigment:

Left Eye: 70% Right Eye: 20%

42

BLAIR-ATHOL 27C *Hustler* 19G

PC03060292 DVL 19G FEB. 16, 2019 POLLED

NJW 76S P20 BEEF 38W ET

NJW 73S 38W RIMROCK 27C ET

NJW P606 72N DAYDREAM 73S

| BW | WW | EPDS | BW | WW | YW | MILK | TM |
|-----------------------------------|----------|------|-----|------|------|------|------|
| 84 lbs. | 980 lbs. | | 3.6 | 54.4 | 87.9 | 25.5 | 52.7 |
| REMITALL HEATER 161U | | | | | | | |
| BLAIR-ATHOL 161 HUSSIE 87C | | | | | | | |
| BLAIR-ATHOL CLASSY LADY 60Y | | | | | | | |

Blair-Athol Polled Herefords



End Zone 64G - Lot 43

A favorite around here all year. Dark and red. Tremendous eye appeal and shape. His dam is an easy doing, beautiful uddered cow. Coming out of the Haylee family. Same family as the Haylee donor at Remitall West.

UNASSISTED

Pigment:
Left Eye: 100% Right Eye: 100%

43

BLAIR-ATHOL 206 *End Zone 64G*

PC03062185 DVL 64G MAR. 1, 2019 POLLED

TH 403A 475Z PIONEER 358C ET

TH 13Y 358C BOTTOM LINE 206E

TH 54W 719T BETH 13Y

| BW | WW | EPDS | BW | WW | YW | MILK | TM |
|---------|----------|------|-----|------|-------|------|------|
| 97 lbs. | 950 lbs. | | 5.6 | 68.0 | 115.6 | 27.3 | 61.3 |

SQUARE-D PLAINSMAN 946Y

BLAIR-ATHOL 946 HAYLEE 106B

HAROLDSON'S HAYLEE 68M 66P



Shaq 16G - Lot 44

Horned, Time's a Wastin' son. Thick and powerful in every way. Definitely one of the top bulls. Cow family is the same one that gave us foundation sire, Online 13K.

UNASSISTED

Pigment:
Left Eye: 70% Right Eye: 100%

44

BLAIR-ATHOL 0124 *Shaq 16G*

C03060290 DVL 16G FEB. 15, 2019 HORNED

CRR ABOUT TIME 743

RST TIME'S A WASTIN' 0124

RST MS 1000 BLAZER 2029

| BW | WW | EPDS | BW | WW | YW | MILK | TM |
|---------|----------|------|-----|------|-------|------|------|
| 95 lbs. | 984 lbs. | | 5.7 | 61.0 | 102.4 | 17.5 | 48.0 |

MHPH 118U ZAPPA 218Z

C&T PCL 218Z SHAKIRA 42D

BLAIR-ATHOL 161 SHAKIRA 41Z

Blair-Athol Polled Herefords



Homefront 32G - Lot 45

45 **BLAIR-ATHOL 10Y** *Homefront* **32G**
 PC03061821 DVL 32G FEB. 21, 2019 SCURRED

SHF WONDER M326 W18 ET
NJW 73S W18 HOMETOWN 10Y ET
 NJW P606 72N DAYDREAM 73S
 GLENLEES ECV 75R TONIC 89W
BLAIR-ATHOL ROXY T 65A
 TABOO 005 ROXY 205R

| BW | WW | EPDS | BW | WW | YW | MILK | TM |
|---------|---------|------|-----|------|------|------|------|
| 92 lbs. | 950 lbs | | 4.2 | 57.9 | 94.2 | 28.4 | 57.4 |

Can't say enough about this Hometown 10Y son. 10Y has done all we can ask for here and around the world. Easy doing, pigmented and functional. Daughters and sons alike are consistently good!

UNASSISTED
 Pigment: Left Eye: 100% Right Eye: 100%



Baxter 34G - Lot 46

46 **BLAIR-ATHOL 97** *Baxter* **34G**
 PC03059402 DVL 34G FEB. 21, 2019 POLLED

NJW 67U 28M BIG MAX 22Z
NJW 73S 22Z MIGHTY MAX 97B ET
 NJW P606 72N DAYDREAM 73S
 BLAIR-ATHOL FIRST CHOICE 89S
BLAIR-ATHOL WORTH THE WAIT 80W
 BLAIR-ATHOL 664 DEANNA 14D

| BW | WW | EPDS | BW | WW | YW | MILK | TM |
|---------|-----------|------|-----|------|------|------|------|
| 94 lbs. | 1010 lbs. | | 4.4 | 56.4 | 89.0 | 26.1 | 54.3 |

Big topped, growthy, performance driven son of Max 97B. His dam did it every year, one of our best and oldest cow families. Last year's bull sold to Stephen Cowan.

UNASSISTED
 Pigment: Left Eye: 0% Right Eye: 70%



Klondike 114G - Lot 47

47 **BLAIR-ATHOL 27C** *Klondike* **114G**
 PC03063638 DVL 114G MAR. 22, 2019 POLLED

NJW 76S P20 BEEF 38W ET
NJW 73S 38W RIMROCK 27C ET
 NJW P606 72N DAYDREAM 73S
 BLAIR-ATHOL CLASSIC 53U
BLAIR-ATHOL CLASSIC MEG 109C
 BLAIR-ATHOL ANN MARGRET 51P

| BW | WW | EPDS | BW | WW | YW | MILK | TM |
|----------|----------|------|-----|------|------|------|------|
| 103 lbs. | 936 lbs. | | 6.0 | 57.0 | 95.7 | 23.4 | 51.9 |

Bottom side of his pedigree traces back to the great Klondike herd. His fifth-generation grandmother was the 315 cow from Klondike. The late Donn Mitchell considered her his best milking, best uddered cow. We were fortunate to lease her in her later years. This guy displays tremendous length and width of hip plus he might be the longest sided bull we are selling. His daughters will be stunning. Make sure to check this guy twice. We feel he could be a great one!

UNASSISTED
 Pigment: Left Eye: 30% Right Eye: 100%

48

BLAIR-ATHOL 206 *Settler* ET 93G

PC03067193 DVL 93G MAR. 12, 2019 POLLED

TH 403A 475Z PIONEER 358C ET

TH 13Y 358C BOTTOM LINE 206E

TH 54W 719T BETH 13Y

GHC VOLUME III ET 139S

GHC MISS DEW ET 13Y

GHC MISS NANCY 98P

| BW | WW | EPDS | BW | WW | YW | MILK | TM |
|---------|----------|------|-----|------|-------|------|------|
| 84 lbs. | 914 lbs. | | 3.4 | 66.9 | 103.0 | 31.4 | 64.9 |

Love this Bottom Line son out of donor dam, 13Y. Attractive and balanced. He makes you look every time you walk in the pen. Maternal brother to herd sire, Make My Day.

UNASSISTED

Heifer Approved.

Pigment: Left Eye: 100% Right Eye: 100%



Settler 93G - Lot 48

49

BLAIR-ATHOL 206 *Crown Roy* 106G

PC03063635 DVL 106G MAR. 17, 2019 POLLED

TH 403A 475Z PIONEER 358C ET

TH 13Y 358C BOTTOM LINE 206E

TH 54W 719T BETH 13Y

BLAIR-ATHOL 20 THE ROCK ET 19M

BLAIR-ATHOL 19M CHARDONNAY 93B

BLAIR-ATHOL RIBEYE GAL 107W

| BW | WW | EPDS | BW | WW | YW | MILK | TM |
|----------|----------|------|-----|------|-------|------|------|
| 102 lbs. | 752 lbs. | | 7.2 | 75.2 | 126.5 | 24.9 | 62.5 |

These Bottom Line sons are a great group. Huge yearling and total maternal numbers. 106G is yellow and sound. His mother, Chardonnay 93B, was a many time show champion, most notably winning Champion Hereford at the Agribition First Lady Classic. Jeff has retained nearly 20 females out of this cow family, buying a bull might be the only way to get these genetics.

UNASSISTED

Pigment: Left Eye: 100% Right Eye: 30%



Crown Roy 106G - Lot 49

50

BLAIR-ATHOL 206E *Dallas* 70G

PC03062241 DVL 70G MAR. 4, 2019 POLLED

TH 403A 475Z PIONEER 358C ET

TH 13Y 358C BOTTOM LINE 206E

TH 54W 719T BETH 13Y

REMITALL SHATNER 323S

BCD 323 POLLED WREN 242Z

BCD 345S WREN 988W

| BW | WW | EPDS | BW | WW | YW | MILK | TM |
|---------|-----------|------|-----|------|-------|------|------|
| 94 lbs. | 1020 lbs. | | 5.8 | 67.8 | 115.3 | 27.4 | 61.3 |

This might be the growthiest Bottom Line son selling. His dam, 242Z, has been a tremendous producer since being purchased out of the Bar JB/Dallas Sale in 2012. Three of her offspring have made the trip to Agribition. Maternal brother works for Adrian Lohse.

UNASSISTED

Pigment: Left Eye: 60% Right Eye: 80%



Dallas 70G - Lot 50

Blair-Athol Polled Herefords



Aussie 133G - Lot 51

51

BLAIR-ATHOL 27C *Aussie* 133G

PC03063646 DVL 133G MAR. 29, 2019 POLLED

NJW 76S P20 BEEF 38W ET

NJW 73S 38W RIMROCK 27C ET

NJW P606 72N DAYDREAM 73S

TDP CROSSOVER Z400

BBSF Z400 CINDY ET 94B

BBSF 303T CINDY 88Y

| BW | WW | EPDS | BW | WW | YW | MILK | TM |
|---------|----------|------|-----|------|-------|------|------|
| 95 lbs. | 816 lbs. | | 3.9 | 57.3 | 100.4 | 27.5 | 56.2 |

RimRock son we think a lot of. Lots of top and hip, sound in structure and a front end that should be trouble free. Dam is the front pasture kind.

UNASSISTED

Pigment: Left Eye: 0% Right Eye: 0%



Time's Square 309G - Lot 52

52

RU BA *Time's Square* 309G

PC03059473 EKD 309G MAR. 19, 2019 POLLED

CRR ABOUT TIME 743

RST TIME'S A WASTIN' 0124

RST MS 1000 BLAZER 2029

TH 122 71I VICTOR 719T

PCL FIESTA 719T 14B

PCL FIESTA 743 5Y

| BW | WW | EPDS | BW | WW | YW | MILK | TM |
|---------|----------|------|-----|------|------|------|------|
| 84 lbs. | 942 lbs. | | 1.4 | 56.4 | 88.4 | 21.1 | 49.3 |

Times Square is one of the most attractive bulls we are selling. Perfectly balanced. Lots of shape and style and the look of a herd bull. Put him on some black cows and sell the show steers. 719T dam is one of the best.

Owned with Robert Bestrop.

UNASSISTED

Heifer Approved.

Pigment: Left Eye: 100% Right Eye: 100%



Raptor 280G - Lot 53

53

RU BA 30D *Raptor* 280G

PC03059465 EKD 280G MAR. 8, 2019 POLLED

REMITALL-W START ME UP ET 7B

BLAIR-ATHOL 7B MAKE MY DAY 30D

GHC MISS DEW ET 13Y

TH 71U 719T MR HEREFORD 11X

PCL LADY LUCK 11X 62A

PCL LADY LUCK 609 28Y

| BW | WW | EPDS | BW | WW | YW | MILK | TM |
|----------|----------|------|-----|------|------|------|------|
| 100 lbs. | 960 lbs. | | 5.8 | 60.7 | 96.1 | 26.5 | 56.9 |

Fourth bull in a row out of the 62A cow from Phantom Creek. Previous sons work for Stephen & Shaun Griffin, Ryan Beierbach and Bar Star Polled Herefords in Montana. Very easy doing. He will breed a lot of cows and make it look easy.

Owned with Robert Bestrop.

UNASSISTED

Pigment: Left Eye: 100% Right Eye: 100%

54

BLAIR-ATHOL 27C *Logger* 14G

PC03059472 DVL 14G FEB. 14, 2019 SCURRED

NJW 76S P20 BEEF 38W ET

NJW 73S 38W RIMROCK 27C ET

NJW P606 72N DAYDREAM 73S

NJW 73S M326 TRUST 100W ET

RVP 100W HEARTLAND BEAT 18B

THM HEARTLAND LADY 0810

| BW | WW | EPDS | BW | WW | YW | MILK | TM |
|----------|----------|------|-----|------|------|------|------|
| 104 lbs. | 966 lbs. | | 4.9 | 63.2 | 97.9 | 30.4 | 62.0 |

Line bred 73S Rimrock/Trust. Dark colored, straight in his lines and full of muscle. Dam was our \$8,000 pick from River Valley in 2015. Every calf has been good. Last year's bull sold to Terry Volk.

UNASSISTED

Pigment: Left Eye: 0% Right Eye: 0%



Logger 14G - Lot 54

55

BLAIR-ATHOL 97B *Big Mac* 137G

PC03059462 DVL 137G APR. 1, 2019 POLLED

NJW 67U 28M BIG MAX 22Z

NJW 73S 22Z MIGHTY MAX 97B ET

NJW P606 72N DAYDREAM 73S

MHPH 101S UMPIRE 118U

MHPH 118U CATRIONA 1071Z

WILD-OAK 40U XTINA 18X

| BW | WW | EPDS | BW | WW | YW | MILK | TM |
|---------|----------|------|-----|------|------|------|------|
| 94 lbs. | 824 lbs. | | 4.0 | 56.1 | 84.9 | 27.7 | 55.8 |

Big, growthy, Max son out of a great producing Umpire daughter. Full brother sold to Oulton Farms in Nova Scotia last year for \$7,250. He has developed very well and was named Reserve Junior Champion Bull at the Royal last fall.

UNASSISTED

Pigment: Left Eye: 100% Right Eye: 100%



Big Mac 137G - Lot 55

56

BLAIR-ATHOL 12C *Banyon* 63G

PC03059419 DVL 63G MAR. 1, 2019 POLLED

BOYD BANKER 0015 ET

REMITALL-W 50 SHADES ET 12C

REMITALL MARVEL 78T

PW VICTOR BOOMER P606

JAC CONNIE ET 18X

SHORTY-CROFT CONNIE 20M

| BW | WW | EPDS | BW | WW | YW | MILK | TM |
|---------|----------|------|-----|------|------|------|------|
| 87 lbs. | 792 lbs. | | 3.7 | 52.1 | 81.2 | 28.4 | 54.5 |

Good bull. Thick yet very nice through his front end. The Connie/P606 cows are consistent and good.

UNASSISTED

Heifer Approved.

Pigment: Left Eye: 10% Right Eye: 10%



Banyon 63G - Lot 56

Blair-Athol Polled Herefords



Franklin 118G - Lot 57

57

BLAIR-ATHOL 43C *Franklin* 118G

PC03059468 DVL 118G MAR. 23, 2019 POLLED

TH 512X 719T PLAYMAKER 14Z

REMITALL-W BNC ACE 43C

REMITALL-WEST MARVEL ET 5Z

BLAIR-ATHOL 20X JAZZ ET 26Y

BLAIR-ATHOL LIBERTY BELLE 137A

OSF REMINISCE 19M 215R

| BW | WW | EPDS | BW | WW | YW | MILK | TM |
|---------|----------|------|-----|------|------|------|------|
| 86 lbs. | 748 lbs. | | 4.1 | 59.2 | 94.4 | 24.5 | 54.1 |

Attractive, long sided, free moving Ace son. His dam was a show heifer for Christin in 2014. Full sister works for RSK in Manitoba.

UNASSISTED

Pigment: Left Eye: 0%

Right Eye: 100%



Return 81F - Lot 58

Not too often one gets a chance at a son of breed icon, Keynote 20X. Solid, square made, easy doing and sound. An embryo out of donor dam, 35W. 35W is a big barreled, good uddered, freckle face brood cow. She is also the dam of Debbie Doo, purchased by Matt Lohner and Kris Gordon for \$15,250 in 2015. Debbie Doo was many time champion in her show career and is now in the Lohner donor program. Maternal brother sells as Lot 59.

UNASSISTED

Heifer Approved.

Pigment: Left Eye: 0% Right Eye: 20%



Dam of lots 58 & 59

58

BLAIR-ATHOL 20X *Return* 81F

PC03057872 DVL 81F MAR. 22, 2019 SCURRED

REMITALL TEAMSTER 9T

REMITALL KEYNOTE 20X

REMITALL PATRICIA 99P



Badger 125F - Lot 59

59

BLAIR-ATHOL 30D *Badger* 125F

PC03048284 DVL 125F APR. 8, 2018 POLLED

REMITALL-W START ME UP ET 7B

BLAIR-ATHOL 7B MAKE MY DAY 30D

GHC MISS DEW ET 13Y

PW MOHICAN NASDAQ P316

BLAIR-ATHOL NASDAQ DEB ET 35W

RU 8G LAST 41L

| BW | WW | YW | EPDS | BW | WW | YW | MILK | TM |
|----------|----------|-----------|------|-----|------|------|------|------|
| 102 lbs. | 712 lbs. | 1210 lbs. | | 5.8 | 58.2 | 96.0 | 21.3 | 50.4 |

Natural calf out of donor dam, 35W. Short marked, red eyed and loaded with muscle. Turn him out and expect the best.

UNASSISTED

Pigment: Left Eye: 100%

Right Eye: 10%

Terms & Conditions

Terms: The terms of the sale are cash or cheque, payable at par at the sale location. The right of property shall not pass until after settlement has been made; no invoicing on buyers in attendance, unless previous arrangements have been made. Every animal sells to the highest bidder and in cases of disputes, the auctioneer's decision will be final. Current exchange rates will be announced sale day. All monies are in Canadian funds.

Bidding: Each animal will sell to the highest bidder... no by-bidding will be permitted. Disputes - Bidding will be reopened between the parties involved in dispute. If no further bidding is made, the buyer will be the person from whom the auctioneer accepted the last bid. The auctioneer's decision on all disputes will be final.

Announcements: All announcements made from the auction block will take precedence over the printed matter in the catalogue. Buyers are therefore cautioned to pay close attention to such disclosures.

Breeder's Guarantee: Should any bull fourteen (14) months of age or over fail to prove a breeder after being used on females known to be breeders, the matter shall be reported in writing to the seller within six (6) months following the date of purchase or six (6) months after the bull has reached fourteen (14) months of age. The seller will have the right and privilege of six (6) months to prove the bull a breeder. No guarantee is given that semen collected from the bull will freeze.

Exception Guarantee: In cases where the animal is subjected to any hormonal or surgical reproduction techniques after the sale, this guarantee shall be null and void.

Certificate of Registration: Each animal will carry papers issued by the Canadian Hereford Association. A certificate of registry duly transferred will be furnished to the buyer for each animal after payment has been made.

Pedigree Estimates: Pedigree Estimates (PE) are created on the projected mating of the animal's sire and dam based on averages of the two, creating estimated values that do not hold the same accuracy of actual EPDs issued from the association and should be used as such.

Health: All animals in the sale have met all necessary health requirements.

Liabilities: All persons attend the sale at their own risk. The seller, facility owner and sale manager assume no liability, legal or otherwise, for any accidents that occur. It is understood that T Bar C Cattle Co. (2013) Ltd. is acting only as a medium between buyer and seller and is not responsible for any failure on the part of either party to live up to his obligations. Neither does T Bar C Cattle Co. (2013) Ltd. assume any financial obligations to collect or enforce collection of any monies between parties and any legal action that may in exceptional cases be taken must be between the buyer and the seller. T Bar C Cattle Co. (2013) Ltd. assumes no responsibility for any credit extended by the seller to the buyer. The buyer must look to the seller for fulfillment of all guarantees and representations made hereunder.

Rights and Obligations: The above terms and conditions of the sale shall constitute a contract between the buyer and seller and be equally binding to both. Resale of animals following purchase in this sale shall constitute a separate transaction and the rights and obligations of the two parties connected thereto are not covered by the terms and conditions of this sale.

Phone, Mail, Wire Bids: Bidders unable to attend the sale may phone, wire or mail their bids and instructions to the sale managers, auctioneer or special representatives. Bids must be received in sufficient time prior to the sale.

Delivery: We will assist in arranging transportation wherever possible. Each animal becomes the risk of the purchaser as soon as sold.

Insurance: Will be available sale day. We strongly recommend that insurance is purchased for full value.

Errors: All announcements at sale time, written or oral, supercede any written material in the catalogue.

Thank You

to the 2019 Bidders and Buyers

4G Cattle Co.
Aaron & Sara Friesz
Adriane Lohse
Barry Quam
Bar Star Cattle Company
Bestrop Land & Cattle
Bill Potts
Brad Schmidt
Brady Lands Inc.
Calvin Kotylak
Cedar Stone Polled Herefords
Charles Davis
Conrad Gervais
Coteau Ranch
Dallas & David Toms

Erwin, Marc, Blayde, Paige. Jaryn,
& Jett Lehman
G & C Krupski Farm
Gene Davis
George & Maria Howden
Gold-N Polled Herefords
Harvey Duke
Hebert Livestock Ventures
Jackson Creek Cattle Co.
John & Charlene Lincoln
Kevin & Ken Wilson
Kris Webb
Kurt Lees
Mandy Archdekin

Manns Polled Herefords
Nathan Apperley
Phantom Creek
River Valley Polled Herefords
Roselawn Polled Herefords
Steve & Katie Cowan
Terry Volk
Trevor Copithorne
Victor Oulton
Wade Porter
Warnyca Land & Cattle
Westview Farms
William Beamish
Wraz Red Angus
Wyatt Ramsey

Return Undeliverable
Canadian Addresses To:

T Bar C Cattle Co. Ltd.
Box 2330
Warman, SK S0K 4S0



Directions:

- 5 km South of Kisbey on grid 605 & 4 km West (road 80)
- Watch for steel Right Cross Ranch sign on south side of road

Created By

*Today's
Publishing*