

RED ANGUS • BLACK ANGUS • SIMMENTAL

MAR MAC FARMS

BULL SALE

1:30 PM | AT THE FARM | BRANDON, MANITOBA



March 11TH
2020



MAR MAC FARMS

MAR MAC FARMS



Blair, Lois, Brett and Melissa McRae

RR1 Box 57 Brandon, Manitoba, Canada R7A 5Y1

H: 204-728-3058 B: 204-729-5439 L: 204-573-5192

marmacfarms1@gmail.com

WWW.MARMACFARMS.NET

Welcome

TO THE 16TH ANNUAL MAR MAC BULL SALE

Mar Mac Farms are proud to be members of the Canadian Angus Association for 65 years and 44 years in the Canadian Simmental Association.

Mar Mac Farms are very proud to offer you another top set of bulls. It is hard to say that our bulls seem to get better every year but we feel this group has the depth of quality all the way through and we are sure you will be impressed when you view the bulls. This may be one of the best set in each division yet.

Mar Mac works hard to produce a top quality product for you our customers that we hope will work in any purebred or commercial operation. We take time to attend Auction Mart sales and see what the market is moving towards and the kind of cattle that the Auction Mart buyers are looking for.

Birth weight: The weights you see are the bull's actual birth weight. Within 12 hours of birth, our calves are weighed, vaccinated, tagged and tattooed. Let's remember that we get paid by the pound for our calves and length of body adds pounds. Check out the article in the catalog on Birth Weight and Calving Ease. Mar Mac has tried hard to keep that length and natural thickness in all of their divisions. Weaning weights are the actual weight of the bull and the current weights are from January 12.

This year in the Red Angus, Black Angus and Simmental, you will find power bulls for your cows, and heifer bulls for those ease of calving individuals. 98% of our calves are born unassisted and we feel mainly due to our cowherd being fed out in paddocks with lots of exercise, blended rations, and bull selection.

When we select a herd sire, the bull's mother or grandmother is an important part of our selection. Stop by anytime to view the dams of these bulls, we are very proud of the cowherd we have assembled. We have spent long hours researching our herd bull battery and are very proud of the cow bulls and heifer bulls we have added to our program. If they do not work for us they are gone.



ANY BUYER IN ATTENDANCE WILL BE ELIGIBLE FOR \$500 SALE CREDIT
TO BE USED ON SALE DAY -WE APPRECIATE YOU TAKING YOUR TIME TO ATTEND OUR SALE-

WE ARE A FOURTH GENERATION FARM WHERE EVERYONE IS INVOLVED IN THE DAY TO DAY OPERATIONS.

We make our living in Agriculture and are very proud of it!

Our cowherd grazed most of the winter on corn and bale grazing till calving season. Once they are brought home from our other farm, the cows are fed a silage, hay and straw mixture.

Our calves are not creep fed in the summer, so we can evaluate the full potential of the cowherd. As you will see in this book, Mar Mac really concentrates on cow families and they must produce to stay here. Two weeks before weaning, a feeder with an oat pellet ration is put in the field to get the bulls used to eating away from their mothers. Then one week before weaning, the low stress quiet weans are put in. These are nose clips that are inserted into the calves to prevent sucking. Calves are returned to the pasture with their mothers for 5 days. At the time of the nose wean insertion, fall booster vaccines are administered. They receive Bovishield Gold 5 One Shot (BVD, BRSV,IBR, PI3 and Mannhemia) and an Ultrabac 7/Somubac booster. Calves also received an initial deworming with Safteguard. Pour on Ivermectin products are administered in mid October as a second deworming and for external parasite control. Weaning day the bulls are weighed, weaned and brought home. Once home they are started on a TMR ration of corn silage, hay, grain and supplement ration that has been balanced and formulated for longevity and fertility.

These sale bulls have been through a strict culling process with structural soundness, ease of fleshing, and disposition taken into consideration. Any of the bulls in the sale, we would use in our program.

We would like to retain the right to collect 200 straws of semen for our own herd use at your convenience and our expense, on any of these sale bulls.

At Mar Mac Customer Service is very important; we talk to our buyers at least once during the year to see how the bulls are doing. If you have a problem with your bull, we expect you to call and talk to us.

As you see in the catalog we have a larger group of coming 2 year old bulls. These bulls are virgin bulls and developed specifically for this sale. They are not leftovers; this is an added feature if you have a large pasture that an older bull can handle more cows.

Brett McRae (McRae Land and Livestock) has expanded his program in the Angus and this year is offering a top group of coming 2 year olds. In the future Brett will be expanding this division with his April May born Angus bulls. Our cousin, Angus Valley Farms (Bruce McRae) has a top end group of Black Angus bulls The bulls are all fed in one spot, you will find fatter bulls but these are fed to last. We will be offering this year, bred commercial females from our operation.

We welcome the T Bar C Cattle Co crew and Castlerock Marketing to our 2020 Sale. They have been out and inspected the cattle and will be happy to discuss the bulls with you. Please feel free to talk to any of our sales staff, marketing reps, or our family members if you have questions about the bulls or our program. You can bid online sale day at DLMS and view the videos of the bulls at cattlevids.ca or marmacfarms.net.

Hosting a sale takes a lot of hard work and we would like to thank our friends and neighbors that have helped make these days so successful over the years.

We look forward to meeting with you on sale day, although we can not visit with everyone, would like to thank you for attending our sale and supporting our Beef program.

- Blair & Lois McRae

P.S. JOIN US FOR OUR TASTY MAR MAC HOMEGROWN ROAST BEEF LUNCH AT NOON. OUR SALE BARN IS HEATED BUT THE BULLS ARE ON DISPLAY OUTSIDE, SO DRESS ACCORDINGLY



Guest Consignors

MCRAE LAND & LIVESTOCK
Brett McRae
Brandon, Manitoba
Phone: 204-729-1018

ANGUS VALLEY FARMS
Bruce McRae
Manitou, Manitoba
204-242-4502

MC-THREE FARMS
Tyson McRae
Brandon, Manitoba
204-726-3205

Welcome to Mar Mac Farms Spring Bull Sale at the farm, Brandon, Manitoba on March 11, 2020. The folks at Mar Mac are steeped in history as they and the generation prior have been marketing superior seedstock and promoting their breeds for many, many years.

What a great lineup of bulls; as you go through the pens, you'll find them rugged, hairy, with plenty of shape and muscle, adding value to your next calf crop. These bulls will fit the most discriminating breeders, purebred or commercial. Whether you are looking for Red Angus, Black Angus or Simmental, you will have many exciting choices to select from.

In addition to a great cow herd, this family operation should win a gold medal every year for their volunteerism and involvement with youth in the livestock industry... for which we say thanks!

Mark March 11th on your calendar for a great set of bulls. Feel free to stop by any time prior the sale, view the lineup and see the mothers. Don't hesitate to give them a call... they love to talk cows!

If we may be of assistance, prior to or sale day, feel free to contact any of the T Bar Team or myself, we will help you in a professional manner.

- Chris Poley



CUSTOMER SERVICE PLAN...

Give Mar Mac or any other of the consignors a call anytime... Call us a few days in advance of the sale with your bull needs and we will compile a list of bulls that we feel will work for you. As we are with the bulls everyday, we know the qualities in each bull. If we buy a bull for you sight unseen and you do not like him, you don't own him - no problem! Don't forget to check out the videos!

At the Mar Mac and Guests Bull Sale our fifty plus years of experience as a family run operation means CUSTOMER SERVICE is an important part of our business. We guarantee our bulls 100%, sight unseen purchase satisfaction, wintering program, personal contact after the sale of the bull and the coffee is always on for you to come and view our program.

BULL GUARANTEE...

All bulls have completed a breeding soundness evaluation. If your bull fails to be a satisfactory breeder, we will replace him with a bull of equal value or give you your money back. We guarantee you will have a sound bull to service your cows. We will not provide a replacement if your bull has been miss managed. At no time shall the liability exceed the purchase price of your bull. **Bulls under one year of age on semen test day will be tested after their birthday, before you need them.**

CALVING EASE SCORE...

We evaluate each bull for calving ease determined by bone size, birth weight, birth weight EPD and profile. Scoring is as follows:

***** Recommended for use on moderate framed first calf heifers, of same breed. Should produce minimal or no calving trouble.**

**** Recommended for use on large framed first calf heifers & cows. Should produce minimal or no calving trouble.**

*** Recommended for use on cows. Should produce minimal or no calving trouble.**

DELIVERY...

IF YOU PICK UP YOUR BULL AT THE FARM ON SALE DAY, YOU CAN SAVE \$200 OFF THE PURCHASE PRICE.

We offer to board your bull free until April 15, after that at cost until you need him. **AS WELL, WE WILL DELIVER YOUR BULL FREE TO CENTRAL POINTS IN WESTERN CANADA OR THE US BORDER AND COST WILL BE SHARED TO EASTERN CANADA.** We will make every effort to get the bull to your farm. Delivery will be as close to the date you request your bull, but will be at our convenience. If you can not take your bull when we are in your area, we would appreciate if you made arrangements to pick up your bull. Commercial females in the sale must be picked up by buyer as soon as possible.

PIECE OF MIND...

Your new bull is a valuable asset and we recommend insuring your bull for infertility coverage and all risk mortality. If you are taking advantage of our wintering program, your new bull must be insured so we both have peace of mind. Insurance will be available from Keystone Livestock Services.

ACCIDENTS...

Although every precaution will be taken to protect the safety and comfort of the buyers, neither the sales staff, auctioneer or consignors assume any responsibility in this matter and disclaim any liability, legal or otherwise, in the event of an accident or loss of property.

TERMS...

The terms of the sale are cash or cheque payable in Canadian Funds. The right of property shall not pass until after settlement is made. All settlements must be made with the clerks before any cattle are released.

MAR MAC FARMS & GUESTS

RESERVE THE RIGHT TO DRAW SEMEN ON ANY BULLS IN THE SALE FOR THEIR IN HERD USE.

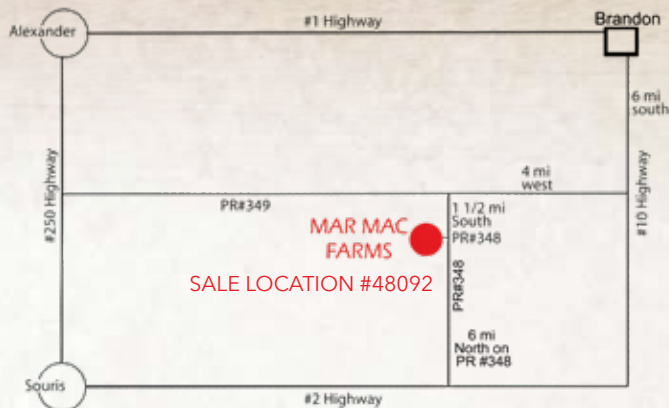
We can supply you with quality bulls and customer service!



MAR MAC FARMS IS A STRONG SUPPORTER OF BEEF PRODUCTION PROGRAMS

MAR MAC FARMS BULL & COMMERCIAL FEMALE SALE

1:30 PM - MARCH 11, 2020 - MAR MAC FARMS SALE BARN



WESTJET FLIES DIRECT TO BRANDON
 sale site located 20 minutes from airport

Sale Staff

Chris Poley, <i>T Bar C</i>	306-220-5006
Nate Marin	306-869-7130
Shane Michelson, <i>T Bar C</i>	403-363-9973
Ben Wright, <i>T Bar C</i>	519-374-3335
Shane Castle, <i>Castlerock</i>	306-741-7485
Robin Hill, <i>Heartland</i>	204-748-2809
Kolton McIntosh, <i>Virden Heartland</i>	204-280-0359
Keith Cleaver, <i>Heartland</i>	204-727-1431
Mark Shologan, <i>DLMS</i>	780-699-5082

Sale Day Phones

Sale Barn	204-728-3058
Blair Cell	204-729-5439
Lois Cell	204-573-5192
Brett Cell	204-729-1018
Melissa Cell	204-573-9903
Bruce Cell	204-242-4502
Tyson Cell	204-726-3205

Photo, Video & Catalogue Production

Prairie Pistol Designs | Melissa McRae | 204-573-9903
www.prairiepistoldesigns@gmail.com

Can't make it to the sale? Internet Bidding Available.

To view this sale visit www.dlms.ca, Fill out the registration form located under registration and sign-up for your free user account and select a username and password.

BIDDERS - To be approved as a bidder, Log in to dlms.ca and click BUYER APPROVAL tab, select the sale you are interested in bidding at and click sign up.

For more information
 Call DLMS Reps:

Melissa McRae 204.573.9903

Mark Shologan 780.699.5082



J & S Meat Processing

- Custom Slaughtering
- Cutting and Wrapping
- Retail Meat Sales

Contact:
 John or Pat Janz • Souris, Manitoba
 (204)483-2234

HOMEGROWN BEEF LUNCH WILL BE SERVED AT 12:15 PM

PREPARED BY J&S MEATS PROCESSING
 FOR THE 16TH YEAR!

Roseland South Brandon 4-H Club
 will be selling homemade pies as a fundraiser.

64 YEARLING & COMING TWO YEAR OLD BULLS

31 *Red Angus*

25 *Black Angus*

8 *Simmental*

VIEW CATALOGUE AND VIDEOS ONLINE AT WWW.MARMACFARMS.NET

Red Angus Reference Sires

Our main focus is to breed Red Angus with natural thickness and strong tops with calving ease, ease of fleshing, and structural correctness that will work in the beef industry. Check out our impressive Red Angus herd bull line up.



Herdsire **RED MOOSE CREEK RIPZONE 89D**
 1943154 CDI 89D 15-MAR-16
 RED CORNER CREEK CASH 2R
RED SOO LINE CASH 9161
 RED TR LYNN 301R
 RED SVR GANGSTER 44X
RED MOOSE CREEK LAUREL 79A
 RED MOOSE CREEK LAUREL 21Y

BW	WW	EPD	BW	WW	YW	MILK	TM	CE
86	786		2.0	51	80	24	50	0.0

This Cash son has left an impressive set of bulls and females at Mar Mac. He adds the natural thickness, hip structure and a good foot that we like to keep in our Red Angus cattle. His mother is a moderate framed, tight uddered good milking female. Ripzone is an impressive individual and breeding very consistent progeny. Ripzone has an exciting future ahead.



Herdsire **RED CHOPPER K CAPACITY 308B**
 1831025 CKL 308B 08-FEB-14
 RED UBAR HIGH CAPACITY 224
RED BADLANDS CAPACITY 37W
 RED BADLANDS RED CEDAR 311
 S A V WALL STREET 7091
CHOPPER K TEWSOXRO 120X (RC)
 RED CHOPPER K TEWSOXRO 42K

BW	WW	EPD	BW	WW	YW	MILK	TM	CE
92	820		5.2	66	104	30	63	-7.0

Here is a power bull that has left us a number of top meaty sons and his daughters are tight uddered females who wean off heavy calves in the fall. A son of Capacity topped the bull sale last year to Brylor Ranch, Red Mar Mac Marshall 21F. His outcross pedigree and proven genetics are a real asset to our Mar Mac Red Angus program.



Herdsire **RED BLAIR'S NAVIGATOR 37E**
 2016094 BBC 37E 11-APR-17
 RED N BAR NAVIGATOR L21
RED GCC NAVIGATOR 1233
 RED LASA DIVIDE R519
 RED JORD REDWOOD 72X
RED BLAIR'S FANNY 87Z
 RED MISS GFT 40T FANNY

BW	WW	EPD	BW	WW	YW	MILK	TM	CE
89	745		2.1	44	68	21	43	1.0

In our search for a new Red Angus Sire, Navigator impressed us with his structural presence, natural thickness and length of body. We are excited to see the calves in 2020.



Herdsire **RED BRIDGEWAY RIDDLER 9D**
 1676167 FKR 28Z 19-FEB-12
 RED NCJ MYSTIFIED 16X
RED K F MYSTERY MAN 44A
 RED K F MS FIREFLY 86W
 RED FRASER COYOTE 918W
RED BRIDGEWAY SALLY 60B
 RED DKF MISS SALLY R 37S

BW	WW	EPD	BW	WW	YW	MILK	TM	CE
81	746		-2.3	36	40	23	41	10.0

Riddler is our calving ease specialists and not only do they calve easy but also have the length, depth of quarter and outcross genetics. Check out his sons in the sale they should work great in some heifer projects.

2020 RED ANGUS BREED AVERAGE EPDS -- BW: 1.2 WW: 35 YW: 60 MILK: 22 TM: 39 CE: 2.4



RED MAR MAC DM **GUIDE 115G**

2089243 KOF 115G 20-FEB-19 CE: **

1

RED SOO LINE CASH 9161
RED MOOSE CREEK RIPZONE 89D
 RED MOOSE CREEK LAUREL 79A
 RED MCRAE'S MISSION 71W
RED MAR MAC REBECCA 90A
 RED BUCK VALLEY REBECCA 34S

Guide 115G is an interesting Ripzone bull out of the Rebecca cow family. This cow family brings in a top calf every year and have been successfully marketed. 90A has lots of milk and this end of February calf you have to admire his natural thickness and structural soundness.

BW	WW	SALEWT	EPD	BW	WW	YW	MILK	TM	CE
86	673			0.5	41	63	24	45	4

2

RED MAR MAC **GENERAL 26G**

2089201 KOF 26G 26-JAN-19 CE: **

RED SOO LINE CASH 9161
RED MOOSE CREEK RIPZONE 89D
 RED MOOSE CREEK LAUREL 79A
 RED COCKBURN RIBEYE 346U
RED MAR MAC SIERA 82Y
 RED MCRAE'S SIERA 38U



BW	WW	SALEWT	EPD	BW	WW	YW	MILK	TM	CE
82	700			1.8	43	72	23	45	2

General 26G is an extremely long bodied smooth made son of Ripzone. This cow family "Siera" has made a real impact on our herd. His dam has sons working in the Lone Stone Farms and Chris Routledge program. This bull is in the top 15% of the Red Angus cattle in Canada for Weaning Weight, Yearling weight and Total Maternal. Length adds pounds and check out this performance bull.



DAM OF LOT 2 - 82Y

QUALITY RUNS DEEP IN THE RED ANGUS DIVISION WITH CALVING EASE AND POWER BULLS



3 RED MAR MAC **RANCHMAN 52G**

2089299 KOF 52G 01-FEB-19 CE: **

RED SOO LINE CASH 9161

RED MOOSE CREEK RIPZONE 89D

RED MOOSE CREEK LAUREL 79A

RED BIEBER ROUGH RIDER 10712

RED MAR MAC TARA 5B

MAR MAC TARA 150Z

BW	WW	SALE WT	EPD	BW	WW	YW	MILK	TM	CE
84	725			0.6	46	71	22	45	4

A Ripzone son that puts it all together, extremely well balanced thick made son out of a productive Roughrider female. Ranchman would be a real asset in a pen of larger framed heifers.



4 RED MAR MAC **ZONE 93G**

TWIN 2089697 KOF 93G 12-FEB-19 CE: **

RED SOO LINE CASH 9161

RED MOOSE CREEK RIPZONE 89D

RED MOOSE CREEK LAUREL 79A

MAR MAC BLACKBERRY 155X

RED MAR MAC TROOPER 179D

RED SUNSET RIDGE TROOPER 10T

BW	WW	SALE WT	EPD	BW	WW	YW	MILK	TM	CE
80	660			1.7	41	68	24	44	2

Ripzone x Trooper is the match for a performance bull. This bull is a twin but look at the performance and depth of body in this bull.



5 RED MAR MAC **SLAMMER 105G**

2089292 KOF 105G 16-FEB-19 CE: **

RED SOO LINE CASH 9161

RED MOOSE CREEK RIPZONE 89D

RED MOOSE CREEK LAUREL 79A

RED BCC CRIMSON JEWELS 102U

RED BRYLOR MRS YOUNG 99A

RED GET-A-LONG MRS YOUNG 109

BW	WW	SALE WT	EPD	BW	WW	YW	MILK	TM	CE
88	635			0.9	35	57	19	37	4

If you want to raise some top, productive females in your program here is a bull to take a second look at. His dam was purchased from Brylor Ranch and has since ended up in our ET program. 99A has a picture perfect udder, thick made and stamps the natural correctness in her progeny. A daughter sold in Red Roundup 2019 to Randy McGowan. An interesting February calf here.



DAM OF LOT 5 - 99A

6

RED MAR MAC **GIBSON 109G**

2089566 KOF 109G 17-FEB-19 CE: **

RED SOO LINE CASH 9161
RED MOOSE CREEK RIPZONE 89D
 RED MOOSE CREEK LAUREL 79A
 RED MAR MAC SPARTAN 81A
RED MAR MAC SIERA 179C
 RED MAR MAC SIERA 10Z

BW	WW	SALEWT	EPDS	BW	WW	YW	MILK	TM	CE
84	682			2.2	41	64	24	45	1

Ripzone stamps them all alike and a meaty son here out of a cow family you are going to hear more about. This Siera family leaves stout made, heavy milking females. Ripzone consistently has that 80-90 lb birth weight in his calves that really go out and perform.



7

RED MAR MAC **RECOIL 156G**

2089568 KOF 156G 24-MAR-19 CE: **

RED SOO LINE CASH 9161
RED MOOSE CREEK RIPZONE 89D
 RED MOOSE CREEK LAUREL 79A
 RED CHOPPER K CAPACITY 308B
RED MAR MAC BONITA 10D
 RED BRYLOR BONITA 65X

BW	WW	SALEWT	EPDS	BW	WW	YW	MILK	TM	CE
86	560			2.5	47	76	24	48	-1

10D is a young female that is just starting to make a mark. This calf is only a March 24 calf so 2 months younger than some of the bulls but look at the correct structure and natural thickness. 156G is in the top 10% for weaning weight, yearling weight and total maternal in the Canadian Red Angus EPDS.



8

RED MAR MAC DM **FRONTMAN 44G**

2089690 KOF 44G 30-JAN-19 CE: **

RED SOO LINE CASH 9161
RED MOOSE CREEK RIPZONE 89D
 RED MOOSE CREEK LAUREL 79A
 RED COCKBURN RIBEYE 346U
RED MAR MAC BONITA 51B
 RED BRYLOR BONITA 65X

BW	WW	SALEWT	EPDS	BW	WW	YW	MILK	TM	CE
74	740			0.4	49	78	21	46	5

Strong cow family the Bonita family here. 51B was the Ribeye female out of the Bonita cow 65X. This cow family and Ripzone's have loads of maternal and paternal strength to work in the beef industry.

9

RED MAR MAC **GARTH 57G**

2089171 KOF 57G 03-FEB-19-19 CE: **

RED SOO LINE CASH 9161
RED MOOSE CREEK RIPZONE 89D
 RED MOOSE CREEK LAUREL 79A
 RED MCRAES VISION 65T
RED MCRAE'S MISTY 130W
 RED BUCK VALLEY MIST 25S

BW	WW	SALEWT	EPDS	BW	WW	YW	MILK	TM	CE
80	615			0.4	27	42	26	40	4

Moderate birth weight and some strong maternal genetics with Gangster, Mulberry and Royce.



10

- SPUR FRANCHISE OF GARTON
- RED 9 MILE FRANCHISE 6305**
- RED C-BAR ABIGRACE Y11
- RED FINE LINE MULBERRY 26P
- RED BRYLOR LADY TROOPER 2E**
- RED MAR MAC LADY TROOPER 114Z

RED MAR MAC DM **TROOPER 39G**

2090497 KOF 39G 29-JAN-19 CE: **

Franchise semen was purchased to add some more calving ease and outcross genetics to our program. What a consistent job he has done at Mar Mac. Trooper 2E we purchased with Dale McKay at the first Mulberry Mayheim. Her dam is our foundation female Lady Trooper 114Z and boy what a job this two year old Mulberry has done on her first calf. She weaned off her calf at 804 lbs with no creep. Trooper 39G has strong paternal and maternal strength along with being a top individual in his own right.

Mar Mac would like to draw some semen on this bull in the future for in herd use only.

BW	WW	SALE WT	CE	BW	WW	YW	MILK	TM	CE
80	804		0.9	58	96	24	53	3	



DAM OF LOT 10 - LADY TROOPER 2E



GRAND DAM OF LOT 10 - LADY TROOPER 114Z



ANGUS GREEN TAGS

TAG YOUR CALVES SO THE PACKERS ACKNOWLEDGE THEY ARE ANGUS



SIRE OF LOT 11 & 12 - FRANCHISE 6305



DAM OF LOT 11 & 12 - SIERA 38U

11

RED MAR MAC **FRANCHISE 18G**

2120233 KOF 18G 24-JAN-19 CE: ***

SPUR FRANCHISE OF GARTON
sire **RED 9 MILE FRANCHISE 6305**
RED C-BAR ABIGRACE Y11

BW	WW	SALE WT	EPD	BW	WW	YW	MILK	TM	CE
70	707			-2	33	59	22	38	8.5

12

RED MAR MAC **FRANCHISE 31G**

2120189 KOF 31G 27-JAN-19 CE: ***

RED FINE LINE MULBERRY 26P
dam **RED MCRAE'S SIERA 38U**
RED BUCK VALLEY SIERA 42H

BW	WW	SALE WT	EPD	BW	WW	YW	MILK	TM	CE
78	787			-2	33	59	22	38	8.5

Two ET Franchise sons out of the Mulberry female we have been flushing as her daughters are real assets in our herd. These two calving ease sons will work great in a pen of heifers.

14

RED MAR MAC DM **BLUE PRINT 28G**

2089700 KOF 28G 26-JAN-19 CE: ***

SPUR FRANCHISE OF GARTON
RED 9 MILE FRANCHISE 6305
RED C-BAR ABIGRACE Y11
MAR MAC CREDIT 57C (RC)
RED MAR MAC BRANDI 90E
MAR MAC BRANDI 8Z (RC)

BW	WW	SALE WT	EPD	BW	WW	YW	MILK	TM	CE
78	733			0.7	49	81	23	48	2

Blue Print is a son of Franchise with some outcross genetics on the bottom side that are proven black genetics. Franchise sons will work great in the heifer pen and yet still have some performance to push the scales down in the fall.



14



RED MAR MAC FOOTPRINT 164F

**RESERVE JUNIOR CHAMPION BULL AT CWA '19
JUNIOR BULL DIVISION GOLD SHOW BULL OF 2019**

A Ripzone son out of the Mar Mac Ruby 10T cow family. Half brothers sell as Lots 1-9.
owned by Mar Mac Farms & Moose Creek Red Angus, SK.

Capacity Sons

15

RED MAR MAC GANGSTER 8G

2089222 KOF 8G 18-JAN-19 CE: *

RED BADLANDS CAPACITY 37W

RED CHOPPER K CAPACITY 308B

CHOPPER K TEWSOXRO 120X (RC)

RED MCRAES TOP CUT 78X

MAR MAC BRANDI 8Z (RC)

MCRAES BRANDI 122X (RC)

BW	WW	SALEWT	EPD	BW	WW	YW	MILK	TM	CE
88	838			3.2	56	90	31	59	-1

A power Capacity son who stood out all summer. The Top Cut daughters make productive tight udder females. Mar Mac top cow families Ruby and Brandi are in the pedigree. 8G is in the top 1% for Weaning Weight, Milk and Total Maternal.



16

RED MAR MAC GENERATOR 9G

2089235 KOF 9G 19-JAN-19 CE: *

RED BADLANDS CAPACITY 37W

RED CHOPPER K CAPACITY 308B

CHOPPER K TEWSOXRO 120X (RC)

RED BCC CRIMSON JEWELS 102U

RED LUCKY 7 KURUBA 217Z

RED BLAIR'S KURUBA 217X

BW	WW	SALEWT	EPD	BW	WW	YW	MILK	TM	CE
84	759			1.5	45	72	27	50	2

Powerful Capacity son whose dam was selected out of Red Round Up and every year brings in a top end calf. The Capacity sons have been out working in the commercial and purebred industry and have beautiful udders.



17

RED MAR MAC CAPACITY 85G

2089698 KOF 85G 11-FEB-19 CE: **

RED BADLANDS CAPACITY 37W

RED CHOPPER K CAPACITY 308B

CHOPPER K TEWSOXRO 120X (RC)

RED FLYING K NEPTUNE 28Z

RED MAR MAC RUBY 202D

RED MCRAE'S RUBY 10T

BW	WW	SALEWT	EPD	BW	WW	YW	MILK	TM	CE
84	698			1.4	42	68	31	52	2

A moderate framed Capacity son who is a grandson of the foundation female 10T. Capacity, Neptune and Mohican some real cow making and performance genetics in this bull.



RED MAR MAC **BENELLI 11G**

2089193 KOF 11G 22-JAN-19 CE: ***

18

- RED NCJ LAZY MC VENOM 34Z
- RED LAZY MC BENELLI 102B**
- RED LAZY MC FIREFLY 36Z A
- RED BIEBER ROUGH RIDER
- RED MAR MAC FRADO 32Y**
- RED MCRAE'S FRADO 53J

Benelli was used on out program for some different genetics and look at the hip and natural thickness he has added to the bulls. The Frado cow family is a moderate framed, hardworking female that never lets us down. This is a bull you need to take a second look at so structurally correct and would work great in a heifer pen.

Mar Mac would like to draw some semen on this bull in the future for in herd use only.

BW	WW	SALE WT	CF	BW	WW	YW	MILK	TM	CE
80	730			-0.6	38	57	18	37	6

19

RED MAR MAC **BENNY 30G**

2089191 KOF 30G 27-JAN-19 CE: ***

- RED NCJ LAZY MC VENOM 34Z
- RED LAZY MC BENELLI 102B**
- RED LAZY MC FIREFLY 36Z
- RED COCKBURN RIBEYE 346U
- RED MAR MAC RUBY 24Y**
- RED MCRAE'S RUBY 10T

BW	WW	SALE WT	CF	BW	WW	YW	MILK	TM	CE
82	710			0.2	48	76	20	44	5

Outcross genetics with Benelli and a proven cow family in Ruby 10T. Benny's dam 24Y was Heifer Calf Champion at the National Angus show in Brandon and has never looked back. Add maternal and paternal strength with this package.



DAM OF LOT 19 - 24Y



DAM OF LOT 20 - 109B

20

- PEAK DOT ELIMINATOR 723A
- RED PEAK DOT ELIMINATOR 596C**
- PEAK DOT HEROINE 383A
- RED BLAIRS PROWLER 214X
- RED MAR MAC FRADO 109B**
- RED MAR MAC FRADO 65Y

RED MAR MAC **ELIMINATOR 58G**

2089315 KOF 58G 03-FEB-19 CE: **

We are extremely impressed with the sons and daughters out of the outcross bull, Eliminator, with a straight black pedigree he offers some top end genetics from the Black Angus that will add performance and fertility. Frado 109B has been a standout since a calf and has mother cow written all over her. Here are some outcross genetics in a neat package.

Mar Mac would like to draw some semen on this bull in the future for in herd use only.

BW	WW	SALEWT	EPD	BW	WW	YW	MILK	TM	CE
88	762			2.3	43	76	22	44	-2



21

21

RED MAR MAC DM **G MAN 16G**

TWIN 2089266 KOF 16G 23-JAN-19 CE: ***

- RED LSF TAKEOVER 9943W
- RED H2R PROFITBUILDER B403**
- RED BROWN MS P707
- RED BLAIRS PROWLER 214X
- RED MAR MAC EASTER 87Z**
- RED MCRAES EASTER 79X

BW	WW	SALEWT	EPD	BW	WW	YW	MILK	TM	CE
76	864			0.4	51	87	20	46	2

Profitbuilder x Prowler x Ribeye. A power bull with some bred in maternal traits. Great growth numbers if you want to add some performance to the calf crop for added dollars at the auction mart.

Riddler / Neptune Sons

just what your heifer pen needs

22

RED MAR MAC TRUST 113G

2089612 KOF 113G 19-FEB-19 CE: ***

RED K F MYSTERY MAN 44A
RED BRIDGEWAY RIDDLER 9D
 RED BRIDGEWAY SALLY 60B
 RED COCKBURN RIBEYE 346U
RED MAR MAC SIERA 80D
 RED MAR MAC SIERA 35Z

BW	WW	SALE WT	EPD	BW	WW	YW	MILK	TM	CE
84	654			1.1	42	58	20	41	3

Heifer Bull



23

RED MAR MAC VERSATILE 128G

2089618 KOF 128G 27-FEB-19 CE: ***

RED K F MYSTERY MAN 44A
RED BRIDGEWAY RIDDLER 9D
 RED BRIDGEWAY SALLY 60B
 RED CHOPPER K CAPACITY 308B
RED MAR MAC TROOPER 223E
 RED SUNSET RIDGE TROOPER 10T

BW	WW	SALE WT	EPD	BW	WW	YW	MILK	TM	CE
86	577			1.1	37	52	24	43	4

Heifer Bull

24

RED MAR MAC RIDDLER 153G

2089617 KOF 153G 24-MAR-19 CE: **

RED K F MYSTERY MAN 44A
RED BRIDGEWAY RIDDLER 9D
 RED BRIDGEWAY SALLY 60B
 RED MAR MAC SPARTAN 81A
RED MAR MAC SIERA 100D
 RED MAR MAC SIERA 44A

BW	WW	SALE WT	EPD	BW	WW	YW	MILK	TM	CE
88	814			2.2	45	66	23	46	0

Bull for 2 year old heifers.

25

RED MAR MAC RIDDLER 46G

2089218 KOF 46G 31-JAN-19 CE: ***

RED K F MYSTERY MAN 44A
RED BRIDGEWAY RIDDLER 9D
 RED BRIDGEWAY SALLY 60B
 RED COCKBURN RIBEYE 346U
RED MAR MAC SIERA 108Y
 RED BUCK VALLEY SIERA 62N

BW	WW	SALE WT	EPD	BW	WW	YW	MILK	TM	CE
78	627			0.5	30	40	17	32	5

Heifer Bull

26

RED MAR MAC RIDDLER 148G

UNREGISTERED KOF 148G 14-MAR-19 CE: ***

RED K F MYSTERY MAN 44A
RED BRIDGEWAY RIDDLER 9D
 RED BRIDGEWAY SALLY 60B
 RED ANGUS
RED ANGUS COW
 RED ANGUS

BW	WW	SALE WT	EPD	BW	WW	YW	MILK	TM	CE
70	583			-	-	-	-	-	-

Unregistered Heifer Bull.

27

RED MAR MAC RIDDLER 96G

UNREGISTERED KOF 96G 13-FEB-19 CE: ***

RED K F MYSTERY MAN 44A
RED BRIDGEWAY RIDDLER 9D
 RED BRIDGEWAY SALLY 60B
 RED ANGUS
RED ANGUS COW
 RED ANGUS

BW	WW	SALE WT	EPD	BW	WW	YW	MILK	TM	CE
68	610			-	-	-	-	-	-

Unregistered Heifer Bull.

28

RED MAR MAC GLACIER 71G

2089232 KOF 71G 07-FEB-19 CE: ***

RED BECKTON NEBULA W312 L3
RED FLYING K NEPTUNE 28Z
 RED FLYING K BERRY 9X
 RED MCRAE'S MISSION 71W
RED MAR MAC REBECCA 100Z
 RED BUCK VALLEY REBECCA 34S

BW	WW	SALE WT	EPD	BW	WW	YW	MILK	TM	CE
82	711			-1.3	26	42	26	39	8

Heifer Bull with bred in Calving ease for the heifer pen.

RED ANGUS COMING 2 YEAR OLDS OWNED BY MCRAE LAND AND LIVESTOCK
 ARE AT THE BACK OF THE BOOK



PURCHASE ANY SIMMENTAL BULL AND BE ENTERED TO WIN A BAG OF SIMMENTAL TAGS!!



Simmental Reference Sires

2020 SIMMENTAL BREED AVERAGE EPDS -- CE: 6.7 BW: 3.4 WW: 69.6 YW: 102.8 M:25.2



Herd sire MAR MAC **UTAH'S WHISKEY 52E**
 1212662 KOB 52E FEB/03/17
 D CR MR MOONSHINE X102
TNT BOOTLEGGER Z268
 TNT MISS W 70
 REMINGTON RED LABEL
MAR MAC UTAH'S DREAM 79U
 MAR MAC NIKE 73H

BW	WW	EPD	CE	BW	WW	YW	MILK	MCE
92	905		11.8	1.5	73.2	110.9	24.7	7.2

HOMO POLLED - RED

We were impressed with the calves off Whiskey at Mar Mac And WLB Livestock. He was used in our program to add length, thickness and a great hair coat.



Herd sire EGC **EVEREST 145E**
 PG1224612 EGC 145E FEB/25/17
 KWA FLYF RED MOUNTAIN 16Z
HARVIE RED SUMMIT 54B
 HARVIE DAKOTA ROSE 11Z
 REMINGTON GENERALLEE 106T
EGC MS GENERALLEE 63X
 EGC MS RED HEMI 103T

BW	WW	EPD	CE	BW	WW	YW	MILK	MCE
105	876		5.9	2.3	73.7	110.8	20.7	5.7

HOMO POLLED - RED

Everest was selected from Carman and Donna Jackson and family. We admired his sire that Harvie Ranch showed and his progeny. This Summit son is homo polled with meat and muscle.



MAR MAC **ALLIANCE 2G**

BPG1279686 KOB 2G 5-JAN-19 CE: **

29

- WS PILGRIM H182U
- CCLT ALLIANCE 91C**
- BROOKS SHINIA 1A
- MRL CRIME SCENE 100C
- DHS MS SPIKE 26E**
- LFE BS SPIKE 654Z

BLACK - HOMO POLLED

Looking for a Black Simmental bull with power, length of body, thickness and extremely correct son of Alliance. His two year old dam did a tremendous job for her first calf. Blair and Melissa purchased this bull's mother at the Shades of the Prairies Sale from Downhill Simmentals. You will drive a lot of miles to see a bull with this much style and natural meat in him. Owned by Mar Mac Farms and Melissa McRae

Mar Mac would like to draw some semen on this bull in the future for in herd use only.

BW	AUG 15	SALEWT	EPD	CE	BW	WW	YW	MILK	MCE
88	700			9.2	2.4	71	96.6	18.9	6

30

MC-THREE **HIGH ROLLER 10G**

BPG1282680 TJM 10G 20-JAN-19 CE: **

- TJ 57J THE GAMBLER
- HSF HIGH ROLLER 12T**
- HSF RED FORTUNES SIS 33
- MRL PREDESTINED 63B
- MAR MAC CARLI 81E**
- MAR MAC CARLI 86X

BW	AUG 15	SALEWT	EPD	CE	BW	WW	YW	MILK	MCE
90	700			10.4	0.8	66.6	91.5	31.7	5.4

BLACK PUREBRED

Here is a calving ease bull ready to go to work on any commercial or purebred farm. I purchased his dam from the Mar Mac New Generation sale in December of 2018 she is out of the Mar Mac Carli cow family. Owned by Tyson McRae

DUE TO THE FACT WE HAD A LOT OF HEIFER CALVES IN 2019 OUR SIMMENTAL BULL NUMBERS ARE LOWER BUT THE QUALITY IS VERY HIGH

State of War Sons



31

31

MAR MAC **WARRIOR 36G**

BPG1279688 KOB 36G 29-JAN-19 CE: *

WELSH'S WARSAW 312Z

HART STATE OF WAR 056C

HART MISS 102A

SVF ALLEGIANCE Y802

MAR MAC SHIKITA 49E

MAR MAC SIERRA 53S

BW	AUG 15	SALEWT	EPD	CE	BW	WW	YW	MILK	MCE
92	720			9.7	1.5	82.3	123	22.8	5.1

HOMO POLLED AND HOMO BLACK

Melissa's Hart State of War on going back to the Carli 14N cow family. Lots of depth of body and natural thickness this Warrior. in the top 10% of the Simmental breed for weaning weight and yearling weight. Owned by Melissa McRae



32

32

MAR MAC **SOLDIER 82G**

BPG1279696 KOB 82G 10-FEB-19 CE: **

WELSH'S WARSAW 312Z

HART STATE OF WAR 056C

HART MISS 102A

MRL PREDESTINED 63B

MAR MAC CARLI 45E

MAR MAC CARLI 86X

BW	AUG 15	SALEWT	EPD	CE	BW	WW	YW	MILK	MCE
82	650			12.5	0.5	75.5	107.1	21.8	6.4

HOMO POLLED AND HOMO BLACK

State of War left some performance with moderate birth weight on this son out of a two year old female going back to the Carli 14N cow family. A great prospect for adding some performance and yet keep some calving ease in your program.

33

MAR MAC **EXCEL 154G**

UNREGISTERED KOB 154G 24-MAR-19 CE: **

ANGUS

MAR MAC CREDIT 57C

ANGUS

SIMMENTAL

SIMMENTAL COW

SIMMENTAL

BW	AUG 15	SALEWT	EPD	CE	BW	WW	YW	MILK	MCE
80	512			8.8	1.8	67.6	102.6	25.8	5.5

RED UNREGISTERED

Unregistered Simmental bull that will add some pounds to your calf crop and length. Owned by Melissa McRae

VIDEOS ONLINE AT

MARMACFARMS.NET



34

MC-THREE **EVEREST 50G**
PG1282681 TJM 50G 1-FEB-19 CE: **

HARVIE RED SUMMIT 54B
EGC EVEREST 145E
EGC MS RED HEMI 103T
WFL OUTLAW 4B
OAKVIEW DESTINY 277D
PWK MS WISE GUY 47X 44Z

BW	AUG 15	SALEWT	EPD	CE	BW	WW	YW	MILK	MCE
88	660			11.1	1	63.7	93.4	27.5	7.9

HOMO POLLED RED SIMMENTAL

Auntie Lois knew what she was doing when she purchased EGC Everest 145E. He has produced a strong group of calves. This Everest prodigy has calving ease that will help you sleep through the night. Look at the excellent hair coat on this bull. *Owned by Tyson McRae*



35

MAR MAC **G MAN 7G**
PG1279690 KOB 7G 17-JAN-19 CE: **

HARVIE RED SUMMIT 54B
EGC EVEREST 145E
EGC MS RED HEMI 103T
MAR MAC REVOLUTION 127C
DELIGHT ROSANNA 314E
DELIGHT MS RENEGADE 314A

BW	AUG 15	SALEWT	EPD	CE	BW	WW	YW	MILK	MCE
86	690			5.4	3.3	71.3	103.8	23.8	4.7

HOMO POLLED RED BALDY SIMMENTAL

A meaty Red white face Everest son out of a female we purchased from Delight Simmental. This moderate framed but full of red meat Everest son will add some pounds to you calf crop.



36

MAR MAC **FRONT MAN 146G**
PG1279683 KOB 146G 12-MAR-19 CE: **

TNT BOOTLEGGER Z268
MRL RED WHISKEY 101B
MRL MISS 677Y
MRL PREDESTINED 63B
MAR MAC DREAM GIRL 76D
MAR MAC UTAH'S DREAM 79U

BW	AUG 15	SALEWT	EPD	CE	BW	WW	YW	MILK	MCE
88	690			6.2	2.3	70.3	100.5	20.9	5

HOMO POLLED RED BALDY SIMMENTAL

A baldy bull with lots of natural thickness and well balanced. His dam is a Predestined baldy female, so hopefully will add the baldy color to your calf crop. *Owned by Melissa McRae*



Black Angus Reference Sires

2020 BLACK ANGUS BREED AVERAGE EPDS -- BW 2.0 WW 47 YW 83 MILK 23 TM 58 CE 4.0



Herd sire

HF **TOMAHAWK 229E**

1978667 HAMI 229E 07-FEB-17

HA OUTSIDE 3008

HA COWBOY UP 5405

HA BLACKCAP LADY 1602

HF TIGER 5T

HF MAYFLOWER 191Z

HF MAYFLOWER 78P

BW	WW	EPD	BW	WW	YW	MILK	TM	CE
86	865		2.8	70	132	23	58	4.0

We had the misfortune of losing Tomahawk and what a sad day it was. We are retaining a Tomahawk son to use in our program. This young sire has left us an extremely impressive set of Angus bulls and females. Tomahawk's dam is an impressive Tiger daughter who is also the dam of HF Alcatraz, the High Selling bull at Hamilton Farms Sale in 2019. If you want calves that add natural thickness, strong tops, and structural correctness check them out in the sale.



Herd sire

YOUNGDALE **FINLEY 90F**

2058062 YDF 90F 20-FEB-18

PF HOOVER DAM 041

YOUNG DALE HI DEFINITION 185B

BLACK HAMCO COUNTESS 417T

RDDA OVERLOAD 2437R

YOUNG DALE ELBA 24W

YOUNG DALE ELBA 23N

BW	WW	EPD	BW	WW	YW	MILK	TM	CE
91	722		3.4	59	113	20	50	4.0

We had always admired the Youngdale cattle so in our search for a new herd sire, Finley caught our eye with his extreme length, and structure. His dam is an Elite/ Premier dam in the Canadian Angus Association. Designated Elite since 2015 Calves 4, Average Ratio 106. We are excited to see the calves from Finley at Mar Mac in 2020.

BIRTH WEIGHT AND CALVING EASE

University studies in Wyoming and data from Montana and Colorado lend credence to the following conclusions.

1. The birth weight itself influences calving ease by 65%.
2. The female has 60-70% influence on birth weight of her calf.
3. The bull has 30-40% influence on birth weight of his progeny.
4. Pelvic measurement and angle as well as the shape of the calf has 35-40% influence on calving ease.
5. Length of gestation greatly affects birth weight. A fetus can gain over one pound per day in the last days of gestation.
6. Weather and temperature the last 30 days affect the length of gestation.
7. Size and maturity of the cow influences calving ease.

Remember, everything is relative. Increased growth, frame and performance will increase BW. A longer-bodied calf will weigh more. If a calf is expected to have the genetics to growth, it will display this prior to birth as well as after. As a rule of thumb, it takes a calf weighing 85 lbs. at birth to finish at 1200-1250 lb. A cow should easily give birth to a calf weighing 8% of her own body weight. Thus a 1200 lb cow should give birth to a 96 lb calf with ease.

Continued selection for light birth weights will ultimately reduce the mature sizes and performance of your cattle.



Herd sire

MERIT **STONEY CREEK 7035E**

1986184 MSL 7035E 1-FEB-17

HF PROWLER 43U

MERIT STONEY CREEK 4023

MERIT PRIDE 2010

BEVERLY HILLS VISA 734

MERIT BLACKCLASS 1184

MERIT BLACKCLASS 5195

BW	WW	EPD	BW	WW	YW	MILK	TM	CE
79	687		2.8	50	80	24	49	3.0

Brett purchased this Stoney Creek son from Merit Cattle Co. out of one of their top females. He was very impressed by all the Beverly Hills Visa daughters at Merit. We are excited to see what his offspring will do.

Owned by McRae Land & Livestock



37

MAR MAC **SHOWDOWN 42G**

2089658 KOF 42G 29-JAN-19 CE: **

COLEMAN CHARLO
S A V PRESIDENT 6847
 S A V BLACKCAP MAY 4136
 STUART DESTINATION 32S
GERLEI HEROINE 75Y
 GERLEI HEROINE 27U

This is a calf that was a standout since day one. His dam is also the dam of the Mar Mac Tiger 170A who was used heavily in our program for a number of years. 75Y was a herd bull producer and she is not around but her legacy will live on. President is one of the exciting Angus sires this year with many top notch progeny showing up. If you want a herd bull full of red meat and capacity and exciting genetics here he is. Don't overlook the potential in this bull. This is the cover bull!!

Mar Mac would like to draw some semen on this bull in the future for in herd use only.

BW	WW	SALEWT	EPD	BW	WW	YW	MILK	TM	CE
86	630			1.4	61	105	21	52	6

38

MAR MAC **RANCHMAN 62G**

2089659 KOF 62G 04-FEB-19 CE: *

COLEMAN CHARLO
S A V PRESIDENT 6847
 S A V BLACKCAP MAY 4136
 S A V RESOURCE 1441
MAR MAC BRIDGET 52B
 MCRAES BRIDGET 125T

BW	WW	SALEWT	EPD	BW	WW	YW	MILK	TM	CE
90	705			2.8	57	107	23	52	4

Mar Mac Ranchman 62G is a President son and out of a power packed pedigree on the dam side with Resource, donor females Bridget 51N and Bridget 125T. Look at the hair coat, meat and muscle in this February 4 bull. Take a second look at 62G to add performance and milk to your Angus program.



38

Tomahawk Sons



39

COWBOY UP 5405
HF TOMAHAWK 229E
 HF MAYFLOWER 191Z
 BNC GAME CHANGER 1Y
BLAIR'S ELBA 212B
 SOO LINE ELBA 0375

MAR MAC **SOLUTION 108G**

2089317 KOF 108G 17-FEB-19 CE: **

Tomahawk was selected to add performance, maternal strength and outcross genetics. We are truly excited with his first set of calves. This Feb 17 son of Tomahawk has turned many heads on the fall show circuit with his structural correctness, meat and muscle and out of a Game Changer female who seems to always bring in a thick, structurally correct calf every year. ADJ WW 817 lbs.

Mar Mac would like to draw some semen on this bull in the future for in herd use only.

BW	WW	SALE WT	EPD	BW	WW	YW	MILK	TM	CE
88	650			2.7	66	112	22	55	4



DAM OF LOT 39 - ELBA 212B



LOT 39 - RESERVE JUNIOR BULL CALF - AG EX 2019

THIS IS AN EXTREMELY STRONG SET OF BLACK ANGUS BULLS THAT WOULD BE ASSETS TO MANY PROGRAMS

40

MAR MAC **TOMAHAWK 121G**

2089287 KOF 121G 21-FEB-19 CE: *

COWBOY UP 5405

HF TOMAHAWK 229E

HF MAYFLOWER 191Z

CONNEALY IMPRINT 8317

MAR MAC BRIDGET 23A

MCRAE'S BRIDGET 33U

BW	WW	SALE WT	EPD	BW	WW	YW	MILK	TM	CE
98	732			4.2	66	120	21	54	11

Tomahawk and Conneally Imprint. 121G deserves a second look. His grand dam was a second place female at the World Angus Forum in Calgary in 2009. Look at the extremely long bodied, thick made Tomahawk son that will add dollars in your pocket with that extra length which adds pounds to your calf crop.



40

41

MAR MAC **ALL STAR 101G**

2089610 KOF 101G 14-FEB-19 CE: **

COWBOY UP 5405

HF TOMAHAWK 229E

HF MAYFLOWER 191Z

S A V RESOURCE 1441

MAR MAC BRIDGET 58D

MCRAES BRIDGET 125T

BW	WW	SALE WT	EPD	BW	WW	YW	MILK	TM	CE
92	660			3.5	57	112	20	49	2

Tomahawk and Resource and Bridget cow family. Bred in performance and maternal traits.



41

42

MAR MAC **ASSET 110G**

2089295 KOF 110G 17-FEB-19 CE: **

COWBOY UP 5405

HF TOMAHAWK 229E

HF MAYFLOWER 191Z

CONNEALY IMPRINT 8317

MAR MAC BRANDI 3B

MAR MAC BRANDI 29Z

BW	WW	SALE WT	EPD	BW	WW	YW	MILK	TM	CE
88	703			2.2	59	110	19	49	5

This bull is another one of the Tomahawk features we feel. The Imprint and Tomahawk cross worked extremely well at Mar Mac. A bull to take a second look at.



42

Tomahawk / Kozi Sons



43

MAR MAC DESIGNER 123G

2089281 KOF 123G 22-FEB-19 CE: **

COWBOY UP 5405

HF TOMAHAWK 229E

HF MAYFLOWER 191Z

MCATL PURE PRODUCT 903-55

MAR MAC BRANDI 28Z

MCRAES BRANDI 155

BW	WW	SALE WT	EPD	BW	WW	YW	MILK	TM	CE
88	520			2.1	36	78	21	39	4

Well balanced meaty Tomahawk son out of a productive moderate framed Pure Product female.

43

44

MAR MAC TOMAHAWK 136G

2089321 KOF 136G 05-MAR-19 CE: **

COWBOY UP 5405

HF TOMAHAWK 229E

HF MAYFLOWER 191Z

TURIHAUA REX E297

MAR MAC BRIDGET 28C

MCRAES BRIDGET 125T

BW	WW	YW	EPD	BW	WW	YW	MILK	TM	CE
88	650	-		2.9	46	86	19	42	1

Smooth made Tomahawk out of a Rex son from New Zealand so little different pedigree. 28C has a son working in our Angus program.

45

MAR MAC GR PULSE 119G

2089881 KOF 119G 22-FEB-19 CE: ***

MOHNEN HEARTRATE 1751

MOHNEN PULSE 53Z

MOHNEN JILT 2360

MAR MAC TIGER

MAR MAC BRIDGET 75E

MAR MAC BRIDGET 23Z

BW	WW	YW	EPD	BW	WW	YW	MILK	TM	CE
74	570	-		-1.1	40	79	24	44	10

Heifer bull out of Pulse and a Tiger granddaughter. This bull has some growth and body length but still will be an asset to any heifer pen.



46

MAR MAC GOLD DIGGER 40G

2112463 KOF 40G 29-JAN-19 CE: *

KOUPAL KOZI 22

KOUPAL KOZI 418

KOUPAL EBONETTE

HF TIGER 5T

MAR MAC TIGER LILY 25Y

MCRAE'S BRIDGET 33U

BW	WW	SALE WT	EPD	BW	WW	YW	MILK	TM	CE
94	819			1.3	64	116	26	58	8.5

Here is a power bull out of Kozi and our donor female Tiger Lily. Kozi has left some performance in his offspring look at the length of body in this Angus bull. Length equals \$\$\$ at sale time.

46

47

MAR MAC **GARTH 126G**

2089192 KOF 126G 25-FEB-19 CE: *

RCR INSIGHT 189Z 1685316

CORNERGLEN INSIGHT 50C

KDF BLACKCAP TIBBIE 63Y

HF TIGER 5T

MAR MAC TIGER LILY 25Y

MCRAE'S BRIDGET 33U

BW	WW	SALE WT	EPD	BW	WW	YW	MILK	TM	CE
92	651			2.4	32	63	26	42	4

Insight females are just calving now and boy what beautiful udders they have. This bull out of our donor female Tiger Lily should leave some tremendous females. 126G is just the end of February bull and lots of performance for his age.



47

48

MAR MAC **HOMEGROWN 5G**

2089629 KOF 5G 15-JAN-19 CE: **

CTS REMEDY 1T01

ELLINGSON HOMEGROWN

EA BLANCHE 4137

VISION UNANIMOUS 1418

NORTHERN VIEW ROSEBUD 83E

NORTHERN VIEW ROSEBUD 83B

BW	WW	YW	EPD	BW	WW	YW	MILK	TM	CE
76	773	-		1.1	63	115	27	59	6

Extra thick meaty Homegrown son. This bull will be admired by many for this natural thickness and structural correctness. We purchased 83E at the Keystone Classic Sale from our good friends at Northern View Angus. This is her first calf weaning off at 773. Lot of future ahead for this bull and his 2 year old mother. You will have to drive a lot of miles to see a bull this thick made and very moderate birth weight.



48

49

MAR MAC **GOVERNOR 59G (RC)**

2089304 KOF 59G 03-FEB-19 CE: *

RED SOO LINE CASH 9161

RED MOOSE CREEK RIPZONE 89D

RED MOOSE CREEK LAUREL 79A

S A V RESOURCE 1441

MAR MAC SIERA 12B (RC)

RED MCRAE'S SIERA 38U

BW	WW	SALE WT	EPD	BW	WW	YW	MILK	TM	CE
92	825			2.7	59	97	23	53	1

A power black red carrier, featured are his Red Angus EPDS. Ripzone son out of a big broody Resource female. This is quite a bull his depth of body, natural thickness, structural soundness is all wrapped up in this powerful individual. Outcross genetics and a top end individual.



49



Angus Valley Farm

BRUCE MCRAE -- MANITOU, MB -- 204-242-4502

Well it has been 5 years that I have been a guest consigner in this bull sale. My how times flies when you are having fun. If you haven't noticed I have been trying to breed bulls with good Weaning Weights and just as good Yearling Weights, the easy fleshing kind. They must be able to thrive in our wonderful Canadian weather. This year is no different with performance and the bulls are recommended for cows as you will see. I have a small herd of Angus and I am striving for quality over quantity. Thanks to all the bidders and buyers in the past and future. Give me a call if you have any questions. See you on sale day!! Bruce.



50

ANGUS VALLEY **IBULL 25G**

2088618 WFM 25G 10-JAN-19 CE: *

S A V RENOWN 3439
SCHIEFELBEIN IBULL 341
 FROSTY UPWARD 1100
 SCC FINAL ANSWER 1X
SCC LADY PD 73Z
 SCC LADY PD 82X

The dam of 25G had a bull calf in the sale in 2018 that sold to Josef and Sherrie Upgang. Anderson Cattle Co. has purchased a heifer calf out of 25G's dam in 2016. This productive female is a good big cow with a nice udder. 25G is a long bodied bull with lots of maternal strength.

BW	WW	SALEWT	EPD	BW	WW	YW	MILK	TM	CE
95	858			2.8	62	108	27	58	1

51

ANGUS VALLEY **IBULL 24G**

2088623 WFM 24G 08-JAN-19 CE: *

S A V RENOWN 3439


SCHIEFELBEIN IBULL 341

FROSTY UPWARD 1100

SCC FINAL ANSWER 1X

ANGUS VALLEY TIBBIE 5B

SCC TIBBIE 36Z

BW	WW	SALE WT		BW	WW	YW	MILK	TM	CE
88	889			1.5	61	103	26	57	4

This I Bull calf was the pasture pick all year. 24G is a larger framed bull with good hair coat. His dam, 5B, has a nice tight udder with lots of milk. The Black Hawk Angus Ranch purchased a daughter of 5B a couple of years ago. A performance bull to check out sale day.



51

52

ANGUS VALLEY **CONSENSUS 27G**

2088621 WFM 27G 13-JAN-19 CE: *

CONNEALY CONSENSUS


CONNEALY CONSENSUS 7229

BLUE LILLY OF CONANGA

MVF PIONEER 104X

NU-HORIZON RUBY 6005A

PRIME TIME'S 457 RUBY 605'06

BW	WW	SALE WT		BW	WW	YW	MILK	TM	CE
95	873			2.5	57	95	19	48	3

I bought Ruby 6005A as a bred heifer in the Keystone Classic Sale in 2014. There are two females retained in my herd because they are hard to get rid of with the great disposition that all of Ruby's calves have. This would be the best Consensus calf I have raised thus far.

53

ANGUS VALLEY **ORDER OF DUTY 34G**

2088892 WFM 34G 20-JAN-19 CE: *

R B ACTIVE DUTY 0010X


TSN ORDER OF DUTY 73C

GAMBLES LADY 2197

YOUNG DALE XCALIBER 32X

YOUNG DALE ERICA 95B

YOUNG DALE ERICA 19U

BW	WW	SALE WT		BW	WW	YW	MILK	TM	CE
90	806			3.9	59	99	18	48	-1

A smooth made TSN Tour of Duty son whose dam has a nice udder and is a large framed good big Youngdale cow. Chris Lea from Manitou purchased her bull calf last year. Her first calf is one of my best cows.

Doug Allison
Beef Sales Consultant
Cargill Feed and Nutrition



1200 Pacific Avenue
Brandon, MB, Canada R7A 0J3
Cell 204-724-2652
Toll Free 800-665-0626
doug_allison@cargill.com
www.cargill.com

LIVESTOCK NUTRITION IS OUR FOCUS AT CARGILL ANIMAL NUTRITION. We understand they are cattle producers but also understand they are grain producers as well. We encourage producers to grow as many ingredients on farm as they can and we will help fill the nutritional gaps that the forages and energies leave. McRae's grow the silages, hay, straw and grains that help provide protein, energy and some minerals and their Custom Bull Developer Supplement will provide the nutritional shortages to balance their programs requirements.

Our goal is to raise well grown out bulls that will go out and cover females without breaking down and melting away. We want the bulls to mature and

grow in a sound development program and we are very conscious about not getting them over conditioned and to cool down the bulls post sale to get them used to their new surroundings and environment.

This sound nutrition we design will help enhance growth and performance, sound structure, feet and legs, hair and reproductive development with increased scrotal development and semen quality.

I balance MarMac's feeding programs with Cargill's BEEF MAX Ration Balancing Program. We balance to different types of proteins, amino acids, fibers, chelated minerals and selenium, vitamins and the natural Diamond V-NaturSafe product to enhance stronger immunity and absorption of nutrients.

Cargill's goal with Mar Mac Farms is to continue our communication with the success of their Bull Development Program for their customers.

McRae Land & Livestock

BRETT MCRAE & CHANTEL COLLI -- BRANDON, MB -- 204-729-1018
 BRETT.MCRAE@ICLOUD.COM



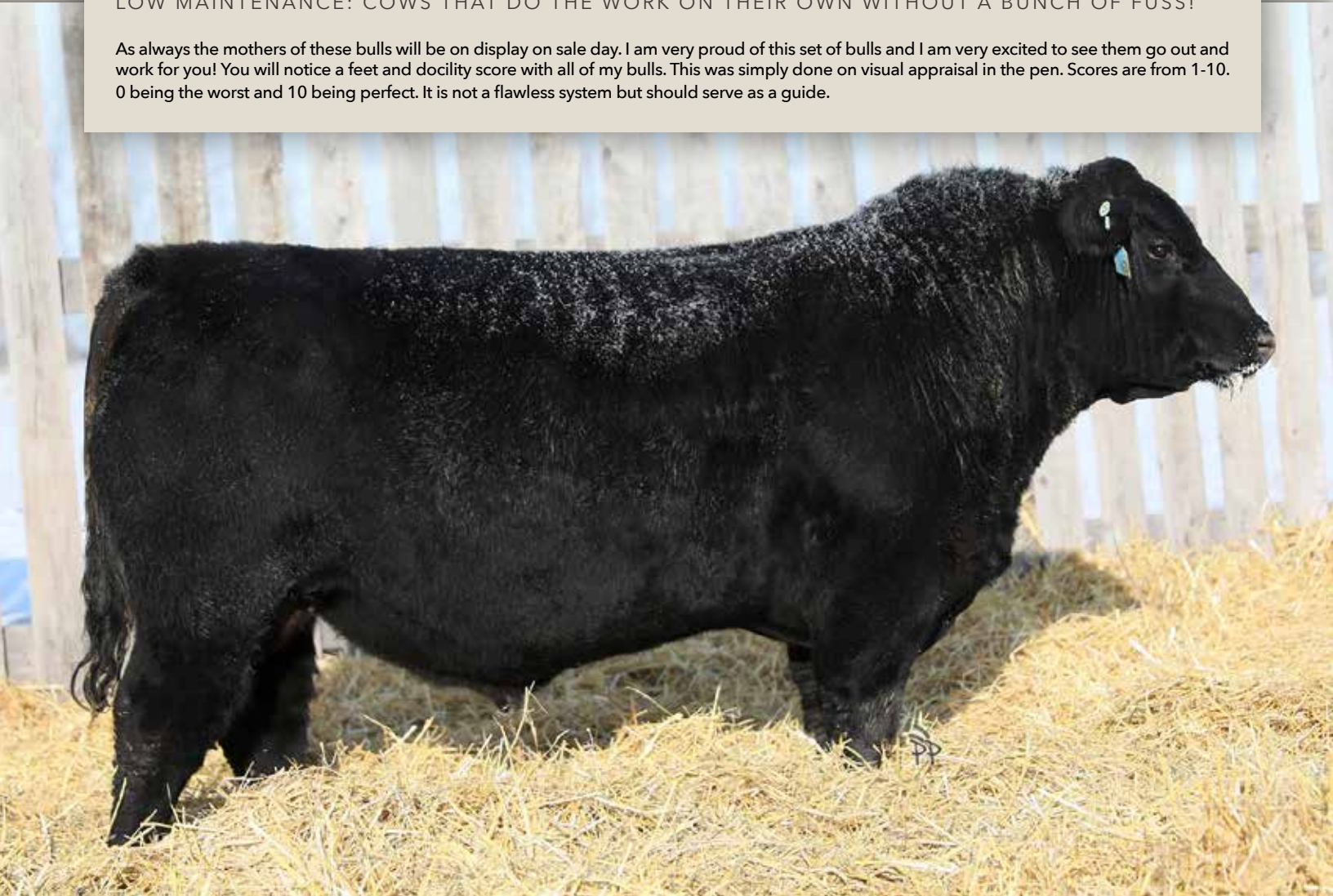
Brett & Chantel

We would like to welcome you to the 2020 edition of the Mar Mac & Guests bull sale. This is the first year that all of the MCLL bulls will be exclusively April/May born 2 year olds. These bulls were all calved on pasture without assistance. In my program, any calf that needs assistance at birth is sold as a steer or feeder heifer. These calves spend the summer on a planned grazing rotation and were weaned in December last year. After weaning they are put with the mature bulls for the "Herd Bull Mentorship Program." After roughing it through their first winter, they were put out on grass and grazed until November, when they were brought to the yard to get ready for the sale.

MY COW HERD IS BASED ON 3 MAJOR SELECTION CRITERIA:

- FERTILITY: COWS THAT COME INTO THE FALL WITH A CALF IN THEIR BELLY AND ONE AT SIDE
- SOUNDNESS: CORRECT FEET AND UDDER STRUCTURE AND A DOCILE TEMPERAMENT
- LOW MAINTENANCE: COWS THAT DO THE WORK ON THEIR OWN WITHOUT A BUNCH OF FUSS!

As always the mothers of these bulls will be on display on sale day. I am very proud of this set of bulls and I am very excited to see them go out and work for you! You will notice a feet and docility score with all of my bulls. This was simply done on visual appraisal in the pen. Scores are from 1-10. 0 being the worst and 10 being perfect. It is not a flawless system but should serve as a guide.



MCRAE'S **KNIGHT 401F**

2055268 MCLL 401F 18-APR-18 CE: ***

54

R R RITO 707
COLEMAN KNIGHT 209
 COLEMAN DONNA 714
 COLE CREEK CEDAR RIDGE 1V
MAR MAC BM TRADITION 406D
 MAR MAC TRADITION 115B

FEET 7 - DOCILITY 6.5

Here is a Coleman Knight son that should work well on heifers. He is a smaller framed bull with a lot of masculinity. His mother 406D is quickly proving herself to be one of my favourite young cows. She has a lot of well known calving ease sires in her pedigree.

BW	WW	SALE WT	CFI	BW	WW	YW	MILK	TM	CE	MCE
78	572			0.1	42	69	22	43	8	5

55

MCRAE'S **CEDAR RIDGE 403F**

2074676 MCLL 403F 19-APR-18 CE: *

COLE CREEK BLACK CEDAR 46P
COLE CREEK CEDAR RIDGE 1V
 COLE CREEK CLOVANADA 49S
 SCHURR 77 801 702
SANDY BAR NEONIA 86C
 SANDY BAR NEONIA 183P

BW	WW	SALE WT	EPD	BW	WW	YW	MILK	TM	CE	MCE
87	598			1.0	51	93	18	44	-1	6

FEET 7.5 - DOCILITY 8

This is my favourite black bull this year! He is long bodied, masculine and thick. His mother is one of the larger Sandy Bar cows and passes on a lot of performance to this bull! He will compliment your herd well as a cow bull.



55

56

MCRAE'S **CEDAR RIDGE 407F**

2075968 MCLL 407F 21-APR-18 CE: *

COLE CREEK BLACK CEDAR 46P
COLE CREEK CEDAR RIDGE 1V
 COLE CREEK CLOVANADA 49S
 SCHURR 77 801 7029
SANDY BAR JEMINA 27C
 SANDY BAR JEMINA 102T

BW	WW	SALE WT	EPD	BW	WW	YW	MILK	TM	CE	MCE
88	516			4.1	47	84	23	47	-6	3

FEET 7 - DOCILITY 7

McRae's Cedar Ridge 407F is a bull that has really caught my eye lately. He is wide topped and has lots of volume. He is a very complete bull. Both he and his mother are among the "sleepers" in the herd; they may not catch your eye right away, but they do their job and are very easy to appreciate.



56

57

MCRAE'S **CEDAR RIDGE 408F**

2075974 MCLL 408F 23-APR-18 CE: ***

COLE CREEK BLACK CEDAR 46P
COLE CREEK CEDAR RIDGE 1V
 COLE CREEK CLOVANADA 49S
 RMF FRANKLIN 54A
SANDY BAR MISS QUALITY 98C
 SANDY BAR MISS QUALITY 405A

BW	WW	SALE WT	EPD	BW	WW	YW	MILK	TM	CE	MCE
78	510			-2.3	33	54	32	49	13	12

FEET 7.5 - DOCILITY 9

Here is an excellent heifer bull! He is smooth made, moderate framed, and boasts tremendous calving ease numbers! This is another bull that I like more and more every time I am out in the bull pen.



57

58

MCRAE'S **INSIGHT 421F**

2064527 MCLL 421F 30-APR-18 CE: **

RCR INSIGHT 189Z
CORNERGLEN INSIGHT 50C
 KDF BLACKCAP TIBBIE 63Y
 B P F SPECIAL FOCUS 504
MAR MAC TRADITION 115B
 JOHNSTON F.A. TRADITION 858Z

BW	WW	SALE WT	EPD	BW	WW	YW	MILK	TM	CE	MCE
87	583			0.8	39	70	24	44	6	8

FEET 7 - DOCILITY 8

421F is a larger framed bull that is smooth made and should work well on heifers.



60

59

MCRAE'S **CEDAR RIDGE 423F**

2075674 MCLL 423F 30-APR-18 CE: *

COLE CREEK BLACK CEDAR 46P
COLE CREEK CEDAR RIDGE 1V
 COLE CREEK CLOVANADA 49S
 SCHURR 77 801 7029
SANDY BAR BESSIE 46C
 HF BESSIE 222U

BW	WW	SALE WT	EPD	BW	WW	YW	MILK	TM	CE	MCE
90	566			2.5	44	73	29	51	1	4

FEET 7 - DOCILITY 6

Here is a smaller framed bull that is long bodied and very smooth moving. His mother, 46C, has been a high performing Sandy Bar cow. She has an exceptional Resource heifer calf on her this year.

60

MCRAE'S **CEDAR RIDGE 425F**

2075675 MCLL 425F 01-MAY-18 CE: *

COLE CREEK BLACK CEDAR 46P
COLE CREEK CEDAR RIDGE 1V
 COLE CREEK CLOVANADA 49S
 VBR DIRECT 5Z 1675730
SANDY BAR CARON 196C
 FARVIEW CARON 1Y

BW	WW	SALE WT	EPD	BW	WW	YW	MILK	TM	CE	MCE
96	632			1.6	44	77	32	54	0	5

FEET 7 - DOCILITY 7

425F is a moderate framed bull that is smooth made, and carries a lot of natural muscle.



61

61

MCRAE'S **INSIGHT 441F**

2064540 MCLL 441F 15-MAY-18 CE: *

RCR INSIGHT 189Z
CORNERGLEN INSIGHT 50C
 KDF BLACKCAP TIBBIE 63Y
 SCHURR 77 801 7023
SANDY BAR JUDY 190C
 SANDY BAR MISS JUDY 130U

BW	WW	SALE WT	EPD	BW	WW	YW	MILK	TM	CE	MCE
98	491			4	35	62	22	40	-4	1

FEET 7 - DOCILITY 7

McRae's Insight 441F is a deep bodied bull with lots of volume. He is wide muzzled and loose hidied. This bull is the youngest bull in the 2 year old pen, but shows a lot of promise as a cow bull.



RED MCRAE'S **PROFITBUILDER 409F**

2055271 MCLL 409F 24-APR-18 CE: ***

62

RED LSF TAKEOVER 9943W
RED H2R PROFITBUILDER B403
 RED BROWN MS P707
 RED BROWN JYJ REDEMPTION
RED MAR MAC BM QUEEN 411D
 RED MAR MAC QUEEN 178A

FEET 6.5 - DOCILITY 6.5

409F has stood out since he was a calf. He is the 1st calf out of a beautiful Redemption daughter that is one of my favourite cows. He is very masculine and deep bodied and is by far the best Red Angus bull I have ever raised!

BW	WW	SALEWT	EPD	BW	WW	YW	MILK	TM	CE	MCE
76	639			-0.9	60	104	18	48	5	7

63

RED MCRAE'S **PROFITBUILDER 410F**

2055273 MCLL 410F 24-APR-18 CE: *

RED LSF TAKEOVER 9943W
RED H2R PROFITBUILDER B403
 RED BROWN MS P707
 RED BROWN JYJ REDEMPTION Y1334
RED MAR MAC BM QUEEN 402D
 RED MAR MAC QUEEN 44B

BW	WW	SALEWT	EPD	BW	WW	YW	MILK	TM	CE	MCE
91	618			1.4	58	104	17	46	-1	4

FEET 7 - DOCILITY 8

Here is a larger framed, deep bodied bull that should work well on cows. He has been one of the biggest bulls in the pen all along. If you are loonking to add pounds, this is the bull for you!



63

MAR MAC FARMS BRED HEIFERS

The Mar Mac heifers are bred to Riddler our calving ease bull. Videos will be online one week before the sale.

64

GROUP OF **BRED HEIFERS**

RED ANGUS

CONSIGNED BY MAR MAC FARMS

65

GROUP OF **BRED HEIFERS**

BLACK ANGUS

CONSIGNED BY MAR MAC FARMS

66

GROUP OF **BRED HEIFERS**

BLACK ANGUS

CONSIGNED BY MAR MAC FARMS

67

GROUP OF **BRED HEIFERS**

ANGUS CROSS

CONSIGNED BY MAR MAC FARMS

MCRAE LAND & LIVESTOCK BRED HEIFERS

All of these heifers were picked out of my replacement heifer program. Take this opportunity to get some top end genetics in your herd.

All of these heifers were A.lled to S Chism 255, then exposed to Merit Stoney Creek 7035E. These heifers will be sold as commercial heifers on sale day. If the buyer chooses they can get the registration papers transferred for an additional fee.

68

GROUP OF **BRED HEIFERS**

BLACK ANGUS

CONSIGNED BY MCRAE LAND & LIVESTOCK

Bred AI to S Chism 255, exposed to Merit Stoney Creek 7035E. Due to start calving May 1, 2020

69

GROUP OF **BRED HEIFERS**

BLACK ANGUS

CONSIGNED BY MCRAE LAND & LIVESTOCK

Bred AI to S Chism 255, exposed to Merit Stoney Creek 7035E. Due to start calving May 1, 2020



S CHISM 255



MERIT STONEY CREEK 7035E

EPDS - EXPECTED PROGENY DIFFERENCE

The expected difference in performance of a bulls progeny when compared to the average progeny performance of all bulls evaluated. EPD's cannot be compared cross breed. Breed Averaged are at the start of each breed section.

- CE** **CALVING EASE** - percentage of unassisted births with the more positive number indicating greater calving ease.
- BW** **BIRTH WEIGHT** - the birth weight of a bulls progeny when compared to the breed average, in pounds.
- WW** **WEANING WEIGHT** - the adjusted weaning weight of a bulls progeny when compared to the breed average, in pounds.
- YW** **YEARLING WEIGHT** - the adjusted yearling weight of a bulls progeny when compared to the breed average, in pounds.
- M** **MILK** - a measure of amount of pre weaning performance gained by calves which can be attributed to the milking ability of a bull's daughters. The EPD is expressed in pounds of calf.
- TM** **TOTAL MATERNAL** - each of these terms measures a sires ability to transmit milk production and growth rate though his daughters. It predicts the weaning weight of a sire's daughter's calves. If is equal to the milk EPD plus 1/2 of this weaning weight EPD.

We have not included the accuracy's due to space go to the breed association page to view them.



2020 CLIPPING & TORCHING CREW
bulls clipped by Brett McRae, Jake Rawluk & Tyson McRae
if you are looking for custom clipping and torching contact
Brett McRae - 204-729-1018

RED MAR MAC MARSHALL 21F
Capacity son out of Red Brylor Bonita 65X
2019 high selling bull sold to Brylor Ranch, AB.

2019 RMWF CHAMPION STEER
exhibited by Melissa McRae, a home raised market steer.
The McRae and Gordon families are long time
exhibitors in the cattle and horse show.



Thank you
for all the
pictures and
design work
**MELISSA
MCRAE**

**TYSON
MCRAE**
thank you
for all that
you do
around
the farm



**THANK YOU TO OUR 2019
Bull & Female Customers**
WE REALLY APPRECIATE EVERYONE WHO
ATTENDED, PARTICIPATED ONLINE AND OUR
BUYERS FOR YOUR SUPPORT TO OUR PROGRAM.
WE LOOK FORWARD TO WORKING WITH YOU
AND YOUR PROGRAM IN THE FUTURE.

THANKS TO EMMA HARMS AND KATHLEEN PORTEOUS FOR YOUR HELP AT THE FALL SHOWS.



Quebec Tour

THANK YOU TO THE GROUP OF
QUEBEC FARMERS FOR
STOPPING IN FOR A HERD TOUR



Special thanks to

ROGER DAVIS AT DAVIS RAIDAN
For the past 28 years of doing Embryo
Transplant work at Mar Mac Farms, Roger
Davis and crew are always an enthusiastic
team of professionals that have helped
us produce top quality genetics out
of our proven females to enhance our
program. Roger's family and Lois' family
grew up in the Hereford business. One
thing about the cattle business is lifetime
friendships are made along with growing
our business. By the look on Roger's face
you can tell we had a successful flush on
3 Red Angus cows; 37 Grade 1 Embryos
and we implanted 30 females.



Congratulations

ERIKA MATHON, DERSTA FARMS
for purchasing Red Mar Mac Lady Trooper 17G. Erika will be
part of the Red Roundup futurity for the next couple of years.



HOSTED BY MAR MAC FARMS & MCRAE LAND & LIVESTOCK

THANKS TO EVERYONE FOR ATTENDED WE ENJOYED VISITING WITH EVERYONE.
STOP BY ANY TIME FOR A TOUR. *Photos by Jill Renton, DLMS*





Manitoba Angus Tour



**RETURN TO:
MAR MAC FARMS**

Blair & Lois McRae
RR 1 Box 57
Brandon, Manitoba R7A 5Y1

CANADA		POSTES
POST		CANADA
	Postage paid Personalized Mail	Port payé Courrier personnalisé
4007102		

RETURN POSTAGE GUARANTEED
PORT DE RETOUR GARANTI



OFFERING YEARLING AND COMING TWO YEAR OLDS



SIMMENTAL



RED ANGUS



BLACK ANGUS

- Thanks for attending the Mar Mac Farms Bull & Commercial Female Sale -