

RED ANGUS • BLACK ANGUS • SIMMENTAL

Join Us

AT THE FARM | BRANDON, MB

2022
March **9th**
WEDNESDAY

D|L|M|S
www.dlms.ca

MAR MAC
FARMS
BULL SALE

GUEST CONSIGNORS

MCRAE LAND AND LIVESTOCK | ANGUS VALLEY FARMS | MC-THREE FARMS

BMO Manitoba Farm Family Award Honouree



MAR MAC FARMS

MAR MAC FARMS

Blair, Lois and Melissa McRae

RR1 Box 57 Brandon, Manitoba, Canada R7A 5Y1

H: 204-728-3058 B: 204-729-5439 L: 204-573-5192

marmacfarms1@gmail.com



MCRAE LAND & LIVESTOCK

Brett & Chantel McRae 204-729-1018

WWW.MARMACFARMS.NET



2020 MANITOBA SIMMENTAL ASSOCIATION
A.O. HENUSET SIMMENTAL AMBASSADOR AWARD

Welcome

TO THE 18TH ANNUAL MAR MAC BULL SALE

2021 was a busy year with our Bull Sale and Female Sale which we hold every three years. As our numbers were getting higher, we decided to disperse the Mar Mac Farms Black Angus cowherd. The bull calves in this sale will be Mar Mac Farms' last Black Angus Bulls to sell but Brett and Chantel of McRae Land and Livestock and Bruce McRae of Angus Valley will continue to bring top quality Black Angus bulls to the Mar Mac Bull Sale. It was a tough decision, but we had to start lowering our numbers to slow down some.

We are a fourth-generation farm where everyone is involved in the day-to-day operations. We love to be part of Agriculture and take pride in producing a top-quality product. Mar Mac Farms are proud to be members of the Canadian Angus Association for 67 years and 46 years in the Canadian Simmental Association.

In 2021 we were proud to welcome Corbin as the 5th Generation to the McRae Family on March 22, 2021. He has brought much joy to our family as first-time grandparents.

In 2021 we were honored to be nominated and awarded the Provincial Exhibition of Manitoba and Bank of Montreal Farm Family for our commitment to Agriculture and the Community.

2021 had its challenges but we were lucky to get some fall rains and now some snow to hopefully replenish the moisture situation. The cattle market is good and the outlook for the next few years looks very exciting.

Hosting a sale takes a lot of hard work and we would like to thank our friends and neighbors that have helped make these days so successful over the years.

We look forward to visiting with you and discussing our bulls. We would like to thank you for supporting our Beef program.

- Blair & Lois McRae

WE ARE A FOURTH GENERATION FARM WHERE EVERYONE IS INVOLVED IN THE DAY TO DAY OPERATIONS.

We make our living in Agriculture and are very proud of it!

A Program You Can Trust!

This crop of bull calves has been one to admire for the uniformity and depth of quality in all 3 divisions. As you toured through the pastures admiring what the mother cows had produced you get a sense of pride of the cow herd you have worked hard to establish. As you will see in the footnotes many strong cow families have been established in our herd and work well every year. Our cowherd grazed most of the winter on corn grazing and bales till calving season. Once they are brought home from our other farm, the cows are fed a silage, hay, and straw mixture.

When we select a herd sire, the bull's mother or grandmother is an important part of our selection. Stop by anytime to view the dams of the Red Angus and Simmental bulls, we are very proud of the cowherd we have assembled. We have spent long hours researching our herd bull battery and are very proud of the cow bulls and heifer bulls we have added to our program. If they do not work for us, they are gone.

This year in the Red Angus, Black Angus and Simmental, you will find power bulls for your cows, and heifer bulls for those ease of calving individuals. 98% of our calves are born unassisted we feel mainly due to our cowherd being fed out in paddocks with lots of exercise, blended rations, and bull selection.

Birth Weight: The weights you see are the bull's actual birth weight. Within 12 hours of birth, our calves are weighed, vaccinated, tagged, and tattooed. Let's remember that we get paid by the pound for our calves and length of body adds pounds. Check out the article in the catalog on Birth Weight and Calving Ease. Mar Mac has tried hard to keep that length and natural thickness in all of their divisions. Weaning weights are the actual weight of the bull on September 1.

In this year's catalog, you will see the calf's actual Birth weight and what it was as a % of his dam's weight at weaning. It is assumed that most cows will calve 7% of their body weight. The average of these bulls % is 5.93%.

Our calves are not creep fed in the summer, so we can evaluate the full potential of the cowherd. Two weeks before weaning, a feeder with an oat pellet ration is put in the field to get the bulls used to eating away from their mothers. Then one week before weaning, the low stress quiet weans are put in. Calves are returned to the pasture with their mothers for 5 days. At the time of the nose wean insertion, fall booster vaccines are administered. Deworming and parasite control are administered in mid October.

Weaning day, the bulls are weighed, weaned and brought home. Once home they are started on a TMR ration of corn silage, hay, grain and supplement that has been balanced and formulated for longevity and fertility. In early January the bulls were vaccinated with Express 5.

These sale bulls have been through a strict culling process with structural soundness, ease of fleshing, and disposition taken into consideration. Any of the bulls in the sale, we would use in our program.

We would like to retain the right to collect 200 straws of semen for our own herd use at your convenience and our expense, on any of these sale bulls.

At Mar Mac Farms and Guests: Customer Service is very important; we talk to our buyers at least once during the year to see how the bulls are doing. If you have a problem with your bull, we expect you to call and talk to us.

As you see in the catalog, we have a larger group of coming 2-year-old bulls. These bulls are virgin bulls and developed specifically for this sale. They are not leftovers; this is an added feature if you have a large pasture that an older bull can handle more cows.

Brett and Chantel McRae (McRae Land and Livestock) have expanded their program in the Angus and this year are offering a top group of coming 2-year-olds. The bulls are all fed in one spot, you will find fatter bulls, but these are fed to last.

Any questions please feel free to give us a call or check out our website for more info.

Welcome to Mar Mac Farms and Guests Annual Bull Sale at the farm, just minutes outside, Brandon, Manitoba, on March 9, 2022. This year, Mar Mac will celebrate their 18th bull sale anniversary, an annual event that is a one stop shopping opportunity where you can select from Red Angus, Black Angus or Simmental, whether you need one or a combination of all three. Supplying quality seed stock is "old hat" for these breeders as they have been supplying the livestock industry with high standard sires for generations with a track record of extreme success.

An outstanding lineup of bulls await your inspection... deep, rugged, stout, and hairy with lots of testicle and bred-in soundness. The strength of a good breeding bull is determined by the power and quality of the mother. The over-whelming success of their fall female event tells us that these bulls have great mothers. Developed through the propagation of leading cows families, Mar-Mac prides themselves for a cow herd that offers fertility, longevity, and outstanding maternal traits without giving up performance. In this offering, there are bulls for all types of breeding programs and all types of budgets whether you are a purebred breeder or commercial producer... this event is a must to attend.

Feel free to stop by Mar-Mac anytime prior the sale, have a tour and peek at the cow herd. Do not hesitate to give these folks a call and discuss the bulls in the offering... they know their bulls and will give you a straight-up answer... they love to talk cattle.

Plan to fulfill your breeding needs at Mar-Mac whether it be with us in person, online or on the phone. During these times, feel free to give any of the T Bar C Team a call and we will be pleased to assist you in a professional and confidential manner with your selections.

- Chris Poloy: 306-220-5006



Our sale barn is heated but the bulls are on display outside, so dress accordingly

JOIN US NOON SALE DAY FOR A ROAST BEEF MEAL PREPARED BY J&S MEATS

WE ENCOURAGE EVERYONE TO COME ANYTIME TO TOUR THE BULL PEN.

PLEASE TAKE ADVANTAGE OF OUR SIGHT UNSEEN PROGRAM (We can give you some suggestions for bulls that will work in your program)

ONLINE SALE VIEWING AND BIDDING ON DLMS.CA Take time and register early.

TALK TO OUR SALE REPS they have evaluated the bulls & look forward to talking to you.

WATCH OUR WEBSITE FOR MORE INFO & SALE VIDEOS

MARMACFARMS.NET

Guest Consignors

ANGUS VALLEY FARMS
Bruce McRae
Manitou, Manitoba
204-242-4502

MCRAE LAND & LIVESTOCK
Brett & Chantel McRae
Brandon, Manitoba
Phone: 204-729-1018

MC-THREE FARMS
Tyson McRae
Brandon, Manitoba
204-726-3205



Boehringer Ingelheim and Mar Mac Farms provide triple-assured health protection with the **EXPRESS VERIFIED[®] PLUS** Program.

EACH ANIMAL COMES WITH THREE DIFFERENT LEVELS OF PROTECTION:

- 1. EXPRESS VERIFIED[®] BVD Persistent Infection-free Guarantee*** providing BVD PI free assurance that's transferable through the CCIA.
- 2. A 6-month health warranty on your Mar Mac bull.*** If your EXPRESS VERIFIED[®] PLUS Mar Mac bull gets sick with any of the 5 diseases (BVD I, BVD II, IBR, BRSV or PI3) covered in the EXPRESS[®] FP vaccine up to 6 months after the Mar Mac sale, Boehringer Ingelheim will cover the cost of diagnostic testing and treatment, up to a maximum of \$3,500.
- 3. Finally, all Mar Mac's Black Angus, Red Angus and Simmental sale bulls are vaccinated to protect their testicles from infection with BVD virus.****

FOR MORE INFORMATION ON THE EXPRESS VERIFIED[®] OR EXPRESS VERIFIED[®] PLUS CALL:

Scott Atkins
(204) 750-2548

Steve Cuddington
(306) 537-0417

For information on Mar Mac bulls contact: **Blair, Lois, Brett & Melissa McRae** at 204-728-3058 or marmacfarms1@gmail.com.

EXPRESS[®] Yearling and EXPRESS[®] Feedlot are ineligible for the EXPRESS VERIFIED[®] Guarantee.

*See full term and conditions of guarantee.

**Givens MD, et al. 2009. Safety and efficacy of vaccination of seronegative bulls with modified-live, cytopathic bovine viral diarrhea viruses. *Theriogenology*. 2009 Apr 1; 71(6):975-83.

EXPRESS[®] and EXPRESS VERIFIED[®] are registered trademarks of Boehringer Ingelheim Vetmedica GmbH, used under license. - 2 -

©2022 Boehringer Ingelheim Animal Health Canada Inc. All Rights Reserved.

Our 4th generation farm takes pride in what we produce for our customers



EXPRESS VERIFIED[®] PLUS HERD.



MAR MAC FARMS BULL SALE

1:30 PM - MARCH 9, 2022 - MAR MAC FARMS SALE BARN

BIRTH WEIGHT AND CALVING EASE

University studies in Wyoming and data from Montana and Colorado lend credence to the following conclusions.

1. The birth weight itself influences calving ease by 65%.
2. The female has 60-70% influence on birth weight of her calf.
3. The bull has 30-40% influence on birth weight of his progeny.
4. Pelvic measurement and angle as well as the shape of the calf has 35-40% influence on calving ease.
5. Length of gestation greatly affects birth weight. A fetus can gain over one pound per day in the last days of gestation.
6. Weather and temperature the last 30 days affect the length of gestation.
7. Size and maturity of the cow influences calving ease.

Remember, everything is relative. Increased growth, frame and performance will increase BW. A longer-bodied calf will weigh more. If a calf is expected to have the genetics to growth, it will display this prior to birth as well as after. As a rule of thumb, it takes a calf weighing 85 lbs. at birth to finish at 1200-1250 lb. A cow should easily give birth to a calf weighing 8% of her own body weight. Thus a 1200 lb cow should give birth to a 96 lb calf with ease.

Continued selection for light birth weights will ultimately reduce the mature sizes and performance of your cattle.

Sale Consultants

T BAR C CATTLE CO.
306-220-5006
CASTLEROCK MARKETING
306-741-7485
NATE MARIN
306-869-7130

Our sale consultants have been out and inspected the cattle and will be happy to discuss the bulls with you. Please feel free to talk to any of our sales staff, or our family members if you have questions about the bulls or our program.

Sale Staff

Chris Poley, T Bar C 306-220-5006
Nate Marin 306-869-7130
Shane Michelson, T Bar C 403-363-9973
Ben Wright, T Bar C 519-374-3335
Shane Castle, Castlerock 306-741-7485
Mark Shologan, DLMS 780-699-5082

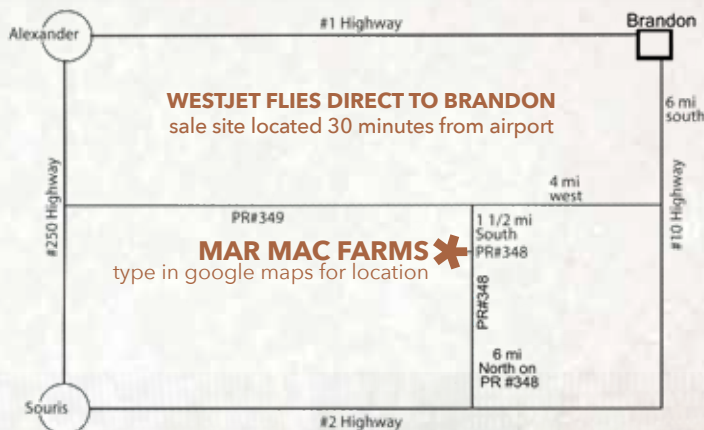
Sale Day Phones

Sale Barn 204-728-3058
Blair Cell 204-729-5439
Lois Cell 204-573-5192
Brett Cell 204-729-1018
Melissa Cell 204-573-9903
Tyson Cell 204-726-3205

Photo, Video & Catalogue Production

Prairie Pistol Designs
www.prairiepistoldesigns.com

VIDEOS ONLINE AT MARMACFARMS.NET
ONLINE BIDDING ON DLMS.CA



Can't make it to the sale? Internet Bidding Available.

To view this sale visit www.dlms.ca, Fill out the registration form located under registration and sign-up for your free user account and select a username and password.

BIDDERS - To be approved as a bidder, Log in to dlms.ca and click BUYER APPROVAL tab, select the sale you are interested in bidding at and click sign up.

For more information

Call DLMS Reps:

Mark Shologan - 780-699-5082 or
DLMS Purebred Team 780.991-3025

DLMS
www.dlms.ca



Herdsire

RED BLAIR'S NAVIGATOR 37E

2016094 **BBC 37E** 11-APR-17

BW:
89 lbs
WW:
745 lbs

Sire: RED GCC NAVIGATOR 1233
RED BLAIR'S NAVIGATOR 37E
RED BLAIRS FANNY 87Z
Dam: RED JORD REDWOOD 72X
RED BLAIR'S FANNY 87Z
RED MISS GFT 40T FANNY

CE: -3.0 **BW:** 4.7 **WW:** 66 **YW:** 107 **MILK:** 21 **MCE:** 5.0

Navigator has done an amazing job at Mar Mac Farms. He was the High Selling Red Angus Bull in the Blair's Pursuit of Excellence Sale. We love the structural presence, natural thickness, dark red color and length of body. He is passing these traits on to his progeny. His son Red Mar Mac Lincoln 106H was our 2021 High Seller, see him below. His first daughters have tight udders with small teats. Check out the meaty Navigator sons in this sale.



Herdsire

RED MOOSE CREEK RIPZONE

19433154 **CDL 89D** 15-MAR-16

BW:
86 lbs
WW:
786 lbs

Sire: RED CORNER CREEK CASH 2R
RED SOO LINE CASH 9161
RED TR LYNN 301R
Dam: RED SVR GANGSTER 44X
RED MOOSE CREEK LAUREL 79A
RED MOOSE CREEK LAUREL 21Y

CE: -4.0 **BW:** 3.2 **WW:** 49 **YW:** 84 **MILK:** 28 **MCE:** -3.0

Ripzone just continues to amaze us with the quality bulls and females he is leaving in our program. He adds natural thickness, hip structure, a good foot and length of spine. His first daughters have tight perfectly made udders and have weaned off a strong set of calves. His sons are impressive check them out in the sale offering. This bull has really made a mark in our program and will continue to be an asset to many beef producers.



Herdsire

RED MAR MAC LINCOLN 106H

2141405 **KOF 106H** 20-FEB-20

BW:
88 lbs
WW:
714 lbs

Sire: RED GCC NAVIGATOR 1233
RED BLAIR'S NAVIGATOR 37E
RED BLAIRS FANNY 87Z
Dam: RED JORD REDWOOD 72X
RED BLAIR'S FANNY 87Z
RED MISS GFT 40T FANNY

CE: 4.0 **BW:** 2.7 **WW:** 63 **YW:** 111 **MILK:** 21 **MCE:** 8.0

Lincoln, the first Navigator son to sell, sold for \$30,000 in our 2021 Bull Sale to Six Mile Ranch and Mc Quantock Ranching. This unique individual is out of a Black Resource female going back to a Mulberry cow. Lincoln is dark cherry red, full of red meat and a bull that should improve the maternal and paternal strength in a program. The first calves look exciting off Lincoln.



Herdsire

RED MAR MAC GENERATION 51G

2112486 **KOF 51G** 1-FEB-19

BW:
72 lbs
WW:
847 lbs

Sire: PEAK DOT ELIMINATOR 723A
RED PEAK DOT ELIMINATOR 596C
PEAK DOT HEROINE 383A
Dam: RED JB MOHICAN 5001
RED MCRAE'S RUBY 10T
RED MCRAE'S RUBY 58J

CE: 3.0 **BW:** 0.0 **WW:** 36 **YW:** 61 **MILK:** 29 **MCE:** 0.0

Generation has been working as our calving ease heifer bull and he has done just that along with leaving some performance in his offspring. His dam Red McRae's Ruby 10T was one of our foundation females and we want to keep that influence in our program. Check out his first set of sons.



Lot 1

1

RED MAR MAC SUSTAINABLE 29J

2205331 KOF 29J 23-JAN-21 CE: ***

bw
74 lbs
act ww
765 lbs
dam wt %
4.62%

Sire: RED GCC NAVIGATOR 1233
RED BLAIR'S NAVIGATOR 37E
RED BLAIRS FANNY 87Z
Dam: RED BCC CRIMSON JEWELS 102U
RED BRYLOR MRS YOUNG 99A
RED GET-A-LONG MRS YOUNG 109

CE: 11.0 BW: -0.2 WW: 47 YW: 77 MILK: 18 MCE: 12.0

PARENT VERIFIED

Here is a bull that puts it all together with our donor female, *Red Brylor Mrs Young 99A Cow Family* and Navigator, our Senior herd sire. 99A has become a real asset to our Red Angus program who adds calving ease and yet keeps the performance in her offspring. Progeny working in the McGowan Farms, Stone Ridge Farms, Vigfusson Farms and Robert Bessant herd. Her daughter was one of the features in our Fall Female sale selling to Big Iron Ranch, SK. In the top 20% of the breed for CE, BW, WW and YW If you want to add calving ease, dark cherry red color, length of body and top genetics, here may be your answer.



DAM - 99A



MATERNAL SISTER - 53H

RED ANGUS

2022 BREED AVERAGE EPDS -- CE 2.5 BW 1.2 WW 38 YW 64 MILK 23 MCE 5.2
Please contact Mar Mac Farms if you are interested in the US Red Angus Bolt Numbers

2 YEAR OLD RED ANGUS BULLS ON PAGE 35



lot 2

2

RED MAR MAC TRUST 138J

2205480 KOF 138J 13-FEB-21 CE: **

bw
76 lbs
act ww
710 lbs
dam wt %
5.42%

Sire: RED MOOSE CREEK RIPZONE 89D
RED MAR MAC FOOTPRINT 164F
RED MAR MAC RUBY 48Z
Dam: RED BLAIRS PROWLER 214X
RED MAR MAC FRADO 109B
RED MAR MAC FRADO 65Y



DAM - 109B



SIRE - 164F

CE: 5.0 BW: 0.0 WW: 36 YW: 59 MILK: 29 MCE: 5.0

PARENT VERIFIED

Footprint was the Reserve Senior Champion at Agribition 2019 who we own with Moose Creek Red Angus. Going back to the Ruby 10T cow family Footprint has left a very functional set of offspring at Mar Mac. Trust 138J is out of the *Frado Cow Family*. His dam 109B has 2 females working in our program and a daughter sold in fall sale to Blairs West, SK. Take time to analyze this long bodied, smooth fronted, thick topped Red Angus bull. Some females no matter what they are mated to excel and 109B is that one.



3

RED MAR MAC TROOPER 36J

2205393 KOF 36J 25-JAN-21 CE: **

bw
78 lbs
act ww
780 lbs
dam wt %
5.49%

Sire: RED GCC NAVIGATOR 1233
RED BLAIR'S NAVIGATOR 37E
RED BLAIRS FANNY 87Z
Dam: MAR MAC BLACKBERRY 155X
RED MAR MAC TROOPER 179D
RED SUNSET RIDGE TROOPER 10T

CE: 5.0 BW: 1.2 WW: 51 YW: 81 MILK: 23 MCE: 7.0

PARENT VERIFIED

A moderate birth weight Navigator son whose dam goes back to the *Lady Trooper Cow Family*. Navigator, Vision, Mulberry and Trooper, some of Mar Mac's most productive cattle come from these bloodlines.



DAM - 179D



4

RED MAR MAC ENCORE 81J

2205458 KOF 81J 1-FEB-21 CE: *

bw
92 lbs
act ww
770 lbs
dam wt %
6.30%

Sire: RED GCC NAVIGATOR 1233
RED BLAIR'S NAVIGATOR 37E
RED BLAIRS FANNY 87Z
Dam: RED COCKBURN RIBEYE 346U
RED MAR MAC FRADO 5C
RED MAR MAC FRADO 32Y

CE: 0.0 BW: 4.0 WW: 45 YW: 69 MILK: 23 MCE: 9.0

PARENT VERIFIED

Add some performance to your calf crop with this thick made, soggy Navigator son. His dam is a daughter of the *Frado Cow Family* so lots of maternal strength here.



DAM - 5C



5

RED MAR MAC DM PILGRIM 90J

2205461 KOF 90J 3-FEB-21 CE: **

bw
84 lbs
act ww
756 lbs
dam wt %
5.91%

Sire: RED GCC NAVIGATOR 1233
RED BLAIR'S NAVIGATOR 37E
RED BLAIRS FANNY 87Z
Dam: MAR MAC CREDIT 57C
RED MAR MAC BRANDI 90E
MAR MAC BRANDI 8Z

CE: -1.0 BW: 3.3 WW: 58 YW: 95 MILK: 24 MCE: 6.0

PARENT VERIFIED

Dark, dark cherry red son of Navigator. Pilgrim goes back to the Brandi 9T Black Angus cow and the *Ruby 10T Cow Family* so some interesting genetics. His grand dam, 8Z is an Elite Cow in the Canadian Angus Association. 90J is in the top 2% of the breed for weaning weight. A cow family with beautiful tight udders who bring in the top calves in the fall. Outcross pedigree that deserves a second look!!



DAM - 90E



MAR MAC RED ANGUS



6

RED MAR MAC DM NAVIGATE 163J

2205494 KOF 163J 1-MAR-21 CE: *

bw
86 lbs
act ww
650 lbs
dam wt %
6.14%

Sire: RED GCC NAVIGATOR 1233
RED BLAIR'S NAVIGATOR 37E
RED BLAIRS FANNY 87Z

Dam: RED COCKBURN RIBEYE 346U
RED MAR MAC BONITA 51B
RED BRYLOR BONITA 65X

CE: -1.0 BW: 3.3 WW: 53 YW: 86 MILK: 20 MCE: 7.0

PARENT VERIFIED

Navigator has added Length and performance to his progeny. 163J's dam is one of our top Ribeye females going back to the **Bonita Cow Family**. Above average EPD's for Weaning Weight and Yearling Weight. Sons of 51B are working at Pederson Farms, Belle Plaine, and Jay Sprott.

Lot 6



7

RED MAR MAC CONTENDER 165J

2205497 KOF 165J 4-MAR-21 CE: **

bw
86 lbs
act ww
560 lbs
dam wt %
6.14%

Sire: RED GCC NAVIGATOR 1233
RED BLAIR'S NAVIGATOR 37E
RED BLAIRS FANNY 87Z

Dam: RED FLYING K NEPTUNE 28Z
RED MAR MAC SIERA 40D
RED MCRAES SIERA 43X

CE: 2.0 BW: 2.0 WW: 36 YW: 60 MILK: 20 MCE: 5.0

PARENT VERIFIED

The Navigator Neptune cross has worked well. This young female from the **Siera Cow family**, has daughters working in the Epp Farms herd and at Mar Mac. This dark cherry red stylish bull should be a great addition to either the heifer or cow pen.

Lot 7

THANKS TO OUR 2021 MAR MAC FARMS AND GUESTS BULL SALE BUYERS. WE APPRECIATE ALL YOUR SUPPORT TO OUR PROGRAM.

Allison Farms
Robert Bessant*
Black Ridge Angus
WJ Bird Farms*
Brigden Ranch
Bouchard Farms*
Boundy Farms
Camo Cattle Co*
Steve Cowan
Curl Farms*
Corey Desrochers*
Randy Dayholos*

Signe De Athe
Gripfast Farms
George Farms *
Ron Friesen*
Holloway Farm
Shayne Kinley
Arnthor Jonasson*
J&L Ranches
JI Bar Cattle
Andrew Kopeechuk
Ross Kemp
Troy Kitz*

M2 Cattle
Steven Manns
Steve Meggison
Dave Peters
Barry Pogson*
MBFI
M.C. Quantock
Meadow Creek Red Angus
Troy Reynolds*
Richard Farms*
Rack Red Angus*
Kevin Routledge*

Dave Reimer
Six Mile Red Angus
Jay Sprott*
Stone Ridge Ranch*
Schneider Working Genetics
Ron and Jason Turetsky*
Vigfusson Farms Ltd. *
WKN Farm*
Walsh Farms
Russ Wolgemuth *
* repeat buyer



Lot 8

8

RED MAR MAC DM KICKSTART 180J

2205502 KOF 180J 14-MAR-21 CE: *

bw
94 lbs
act ww
690 lbs
dam wt %
5.91%

Sire: RED GCC NAVIGATOR 1233
RED BLAIR'S NAVIGATOR 37E
RED BLAIRS FANNY 87Z
Dam: RED FINE LINE MULBERRY 26P
RED BRYLOR LADY TROOPER 2E
RED MAR MAC LADY TROOPER 114Z

CE: -8.0 **BW:** 6.2 **WW:** 72 **YW:** 123 **MILK:** 24 **MCE:** 5.0

PARENT VERIFIED

Wow, just a March 14 bull and ever since day one he has caught your eye.

Here is a performance Navigator son who will add pounds to your calf crop that in the end will mean Dollars in your pocket. He is in the top 1% for Weaning Weight and Yearling Weight in the Red Angus breed. With the genetic potential of this bull you will drive many miles finding a bull with the maternal and paternal strength that this calf has.

Backed by the *Lady Trooper Cow Family*. Trooper 2E has been a real asset to our program, like her dam, Lady Trooper 114Z, she never lets us down! Trooper 2E's first calf, Trooper 39G (high selling bull in our 2020 sale) is working in the Lauron Red Angus cow herd and his first heifer calf sold in Red Roundup for \$5900. Her next son was a Ripzone son who is working in the Troy Kitz herd. 3 calves all bulls and all features in our bull sale.



DAM - 2E



GRAND DAM - 114Z





lot 9



DAM - 87Z

9 RED MAR MAC DM JOURNEY 60J

2205416 KOF 60J 28-JAN-21 CE: **

bw
86 lbs
act ww
773 lbs
dam wt %
5.45%

Sire: RED SOO LINE CASH 9161
RED MOOSE CREEK RIPZONE 89D
RED MOOSE CREEK LAUREL 79A
Dam: RED BLAIRS PROWLER 214X
RED MAR MAC EASTER 87Z
RED MCRAES EASTER 79X

CE: 3.0 BW: 0.8 WW: 38 YW: 65 MILK: 30 MCE: 8.0

PARENT VERIFIED

Ripzone never lets us down adding performance, good testicles, and solid eye appealing sons. 87Z from the *Easter Cow Family* excels when it is weaning every year bringing in those top calves. Females working at Le Blond Farm, QC; Springhill Farms, NB; and sons in Ferme Canland, QC, Bill and Jason Bird, MB; and Robert Bessant, MB herds. 87Z has been an Elite, Premier dam since 2019 in the Canadian Association Performance Program. This bull deserves a second look!!!



lot 10

10 RED MAR MAC ZONE 25J

2205328 KOF 25J 22-JAN-21 CE: *

bw
92 lbs
act ww
698 lbs
dam wt %
5.51%

Sire: RED SOO LINE CASH 9161
RED MOOSE CREEK RIPZONE 89D
RED MOOSE CREEK LAUREL 79A
Dam: RED MAR MAC BOUNDARY 49B
RED WRAZ BLOCKANA 11D
RED WRAZ BLOCKANA 39B

CE: -1.0 BW: 2.2 WW: 41 YW: 71 MILK: 24 MCE: 0.0

SIRE VERIFIED

Length of body adds weight and this is true for this Ripzone son. Dark red color and extremely long bodied. His dam purchased from Wraz Red Angus goes back to a son of Neptune purchased in one of our bull sales. The Neptune females really work and with Ripzone makes an exciting cross.

11

RED MAR MAC JASPER 31J

2205335 KOF 31J 23-JAN-21 CE: **

bw
82 lbs
act ww
750 lbs
dam wt %
5.98%

Sire: RED SOO LINE CASH 9161
RED MOOSE CREEK RIPZONE 89D
RED MOOSE CREEK LAUREL 79A
Dam: RED MAR MAC BULLET 45B
RED EMMATT CREEK FLICKA 732E
RED JAS FLICKA 47Z

CE: 1.0 BW: 1.2 WW: 42 YW: 72 MILK: 24 MCE: 1.0

SIRE VERIFIED

Ripzone, Game Plan and *Ruby 10T Cow Family*. His dam was purchased out of the Keystone Classic Sale from Wushke Red Angus. This bull should leave a productive set of females. Low birth weight and growth.



lot 11

12

RED MAR MAC LAUNCH 57J

2205412 KOF 57J 28-JAN-21 CE: *

bw
98 lbs
act ww
702 lbs
dam wt %
6.20%

Sire: RED SOO LINE CASH 9161
RED MOOSE CREEK RIPZONE 89D
RED MOOSE CREEK LAUREL 79A
Dam: RED MAR MAC INDICATOR 30Z
RED KENRAY LARKABELLE 52C
RED KENRAY LARKABELLE 155X

CE: -7.0 BW: 4.8 WW: 39 YW: 69 MILK: 23 MCE: -4.0

SIRE VERIFIED

A growthy Ripzone son out of a heavy milking granddaughter of *Ruby 10T Cow Family*. With his added length and growth this bull will add performance to your calf crop.



lot 12

14

RED MAR MAC JADE 146J

2205487 KOF 146J 17-FEB-21 CE: **

bw
84 lbs
act ww
764 lbs
dam wt %
6.09%

Sire: RED SOO LINE CASH 9161
RED MOOSE CREEK RIPZONE 89D
RED MOOSE CREEK LAUREL 79A
Dam: RED FLYING K NEPTUNE 28Z
RED MAR MAC VALENTINE 22D
MAR MAC VALENTINE 49A

CE: 3.0 BW: 1.0 WW: 49 YW: 77 MILK: 29 MCE: 2.0

PARENT VERIFIED

Ripzone son who goes back to the Anderson *Valentine Cow Family* with the DMM Creed and Neptune influence. Add some milk and performance with this Ripzone son.



lot 14

MAR MAC RED ANGUS



Lot 15

15

RED MAR MAC DM ZONE 129J

2205476 KOF 129J 12-FEB-21 CE: ***

bw
78 lbs
act ww
672 lbs
dam wt %
5.37%

Sire: RED SOO LINE CASH 9161
RED MOOSE CREEK RIPZONE 89D
RED MOOSE CREEK LAUREL 79A
Dam: RED H2R PROFITBUILDER B403
RED MAR MAC DM TROOPER 39E
RED MAR MAC LADY TROOPER 114Z

CE: 3.0 **BW:** 0.6 **WW:** 48 **YW:** 83 **MILK:** 24 **MCE:** 4.0

Ripzone heifer bull out of a Profit builder female that went back to *Lady Trooper Cow Family*. He would be a great addition to a pen of heifers.



Lot 16

16

RED MAR MAC GAME DAY 147J

2205489 KOF 147J 18-FEB-21 CE: ***

bw
80 lbs
act ww
690 lbs
dam wt %
5.12%

Sire: RED PEAK DOT ELIMINATOR 596C
RED MAR MAC GENERATION 51G
RED MCRAE'S RUBY 10T
Dam: RED SSS ARSON 85U
RED BRYLOR BONITA 65X
RED BRYLOR BONITA 28T

CE: 0.0 **BW:** 1.1 **WW:** 47 **YW:** 70 **MILK:** 30 **MCE:** 3.0

PARENT VERIFIED

Mid February Generation son out of a female we could write a book about. *Bonita 65X*, I still remember the day Nate Marin called to see if we would like anything in the Brylor Sale as he found a couple of females. We purchased 65X and wow what a female she has turned out to be, bred or flushed to any bull it always excels. 65X is an Elite Premier Dam in the Canadian Angus Performance Program since 2020. Generation was kept as a heifer bull and the last son of our Ruby 10T who like Bonita has been a real asset to our breeding program. If you want to build a cowherd around a sire here is one to take into consideration.

Doug Allison
Beef Sales Consultant
Cargill Feed and Nutrition



300 - 240 Graham Avenue
Winnipeg, MB, Canada R3C 0J7
Cell 204-724-2652
Toll Free 800-665-0626
doug_allison@cargill.com
www.cargill.com

We understand they are cattle producers but also understand they are grain producers as well. We encourage producers to grow as many on farm ingredients as they can and we will help fill the nutritional gaps that the forages and grains leave. McRae's do an outstanding job growing quality silages, hay, greenfeeds and grains that help provide protein, energy and some minerals and with their Custom Bull Developer Supplement I provide the nutritional shortages to balance their programs requirements. Over the past number of years we have been able to lower the energy requirement of the diets and increase the forage percentages because of the way the bulls are converting. Conversion is the most economical trait we have and The genetics in the Mar Mac bull program is showing us this. Our goal is to raise well grown out bulls that will go out and cover females without breaking down and melting away. We want the bulls to mature and grow in a sound development program and we are very conscious about not getting them over

conditioned and to cool down the bulls post sale to get them used to their new surroundings and environment. The sound nutrition I design will help enhance growth, conversion, and overall performance. Strong emphasis is on structure soundness, feet and legs, hair and reproductive development with increased scrotal development and semen quality. A sound nutritional program keeps all of this in mind.

I balance Mar Mac's feeding programs with Cargill's BEEF MAX Ration Balancing Program. This program balances to different types of proteins, amino acids, fibers, chelated minerals and selenium, vitamins and the natural Diamond V-NaturSafe product to enhance stronger immunity and absorption of nutrients.

Once again the key to a successful relationship is communication. This communication with Mar Mac Farms helps with a part of the success of their Bull Development Program for their customers.

DOUG ALLISON | BEEF SALES CONSULTANT | CARGILL FEED AND NUTRITION | 204-724-2652 | EMAIL: DOUG_ALLISON@CARGILL.COM



lot 17

17

RED MAR MAC GUIDE 97J

2205465 KOF 97J 4-FEB-21 CE: ***

bw
78 lbs
act ww
660 lbs
dam wt %
6.24%

Sire: RED PEAK DOT ELIMINATOR 596C
RED MAR MAC GENERATION 51G
RED MCRAE'S RUBY 10T
Dam: RED MOOSE CREEK RIPZONE 89D
RED MAR MAC FRADO 138F
RED MAR MAC FRADO 98C

CE: 3.0 BW: 0.3 WW: 35 YW: 59 MILK: 26 MCE: 2.0

PARENT VERIFIED

Check out this dark cherry red Generation son that would excel in a pen of heifers. Look at his natural thickness and length of body. Going back to the *Frado Cow Family*, this bull's grandmother has a number of daughters in our herd, and they work. This is a bull that will calve easy but still leave you some thick meaty calves to sell at the market. Don't miss him.



GRAND DAM - 98C



MAR MAC RED ANGUS



18 RED MAR MAC SARGENT 128J

2205475 KOF 128J 12-FEB-21 CE: *

bw
90 lbs
act ww
600 lbs
dam wt %
7.82%

Sire: RED PEAK DOT ELIMINATOR 596C
RED MAR MAC GENERATION 51G
RED MCRAE'S RUBY 10T

Dam: RED CHOPPER K CAPACITY 308B
RED MAR MAC BRIDGET 116G
MAR MAC BRIDGET 161Z

CE: -5.0 BW: 4.1 WW: 44 YW: 77 MILK: 22 MCE: -2.0

Capacity, Ribeye along with Eliminator has some punch in genetics. The **Bridget Black Angus Cow family** and Ruby 10T. Interesting bull.

19 RED MAR MAC GATEWAY 80J

2205457 KOF 80J 1-FEB-21 CE: *

bw
86 lbs
act ww
770 lbs
dam wt %
6.88%

Sire: RED PEAK DOT ELIMINATOR 596C
RED MAR MAC GENERATION 51G
RED MCRAE'S RUBY 10T

Dam: RED MOOSE CREEK RIPZONE 89D
RED MAR MAC RUBY 88G
RED MAR MAC RUBY 24D

CE: -3.0 BW: 3.0 WW: 56 YW: 92 MILK: 31 MCE: -2.0

PARENT VERIFIED

This bull goes back to **Ruby 10T** on both sides of the pedigree, a long spined, growthy Generation son that should leave some great females.

20 RED MAR MAC MULBERRY 37J

2205398 KOF 37J 25-JAN-21 CE: **

bw
80 lbs
act ww
716 lbs
dam wt %
4.80%

Sire: RED COMPASS MULBERRY 449M
RED FINE LINE MULBERRY 26P
RED DUS FAYETTE 8G

Dam: RED COCKBURN RIBEYE 346U
RED MAR MAC SIERA 10Z
RED BUCK VALLEY SIERA 69L

CE: 5.0 BW: 1.4 WW: 40 YW: 67 MILK: 22 MCE: 10.0

PARENT VERIFIED

You never go wrong with a Red Fine Line Mulberry son. 10Z, from the **Siera Cow Family** has a record not many cows achieve. Sons working in the David Peters, Jay Sprott, Pederson Livestock and Springhill Farms herds. Mar Mac has 2 daughters in our herd that are following in their mothers footsteps.



21 RED MAR MAC ROUGHRIDER 137J

2205477 KOF 137J 13-FEB-21 CE: ***

bw
82 lbs
act ww
645 lbs
dam wt %
6.94%

Sire: RED BASIN TRENDSETTER 6074
RED BIEBER ROUGH RIDER 10712
RED BIEBER ADELLE 8958

Dam: RED MOOSE CREEK RIPZONE 89D
RED MAR MAC FRADO 29G
RED MAR MAC FRADO 98C

CE: 2.0 BW: 2.4 WW: 41 YW: 66 MILK: 23 MCE: 5.0

SIRE VERIFIED

You never go wrong with a Bieber Rough Rider heifer bull and back to the **Frado Cow Family**.



PARENT VERIFIED
 We flushed Ruby 24D to Red 3SCC Domain to add some more potential heifer bulls to our sale. Domain, Zeppelin should be built in calving ease. A dark red calving ease bull out the **Ruby 10T Cow Family**.

Lot 22

22

RED MAR MAC DOMINATOR 69J

2212203 KOF 69J 30-JAN-21 CE: ***

bw
72 lbs
act ww
606 lbs
dam wt %
ET

Sire: RED BECKTON DOMINOR T122 Z1
 RED 3SCC DOMAIN A163
 RED 3SCC EUCLA X723
 Dam: RED WINDY HILL ZEPPELIN 1240Z
 RED MAR MAC RUBY 24D
 RED MCRAE'S RUBY 10T

CE: 2.5 BW: 1.4 WW: 45 YW: 80 MILK: 26 MCE: 1.0

23

RED MAR MAC DM SOLUTION 139J

2205483 KOF 139J 13-FEB-21 CE: ***

bw
76 lbs
act ww
692 lbs
dam wt %
5.50%

Sire: RED SOO LINE POWER EYE 161X
 RED DAMAR TRUMP C512
 RED DAMAR OH BABY W168
 Dam: RED WRIGHTS 832S IRON HIDE 4Z
 RED BLAIR'S LARKABA 671D
 RED BLAIR'S LARKABA 17T

CE: 11.0 BW: -2.1 WW: 21 YW: 39 MILK: 29 MCE: 13.0

PARENT VERIFIED

In our search for a new cow family to add to our herd, Blair and Melissa came across the **Larkaba Cow Family** at the Blair's Sale. The Larkaba family adds calving ease and maternal traits. This Trump son is a moderate framed thick meaty bull that would work well in a heifer pen. Melissa purchased his full sister, and she has just calved out and is a beautiful two-year-old female.



Lot 23



Herdsire

MAR MAC UTAH'S WHISKEY 52E

PG1212662 **KOB 52E** 3-FEB-17

CE: 10.2 **BW:** 2.4 **WW:** 65.6 **YW:** 92.7 **MILK:** 22.7 **MCE:** 5.1

BW:
92 lbs
WW:
905 lbs

Sire: D CR MR MOONSHINE X102
TNT BOOTLEGGER Z268
TNT MISS W 70
Dam: REMINGTON RED LABEL
MAR MAC UTAH'S DREAM 79U
MAR MAC NIKE 73H

HOMO POLLED - PUREBRED

Whiskey has left a strong set of bulls and females at Mar Mac. His 5 daughters in the New Generation Sale were like peas in the pod.

SIMMENTAL

2022 BREED AVERAGE EPDS -- CE 7.2 BW 3.7 WW 75.9 YW 111.7 MILK 28.3 MCE 4.0



Herdsire

KKBS RED BRISK 43G

PG1297180 **KKBS 43G** 4-FEB-19

bw
98 lbs
act ww
792 lbs

Sire: IPU RED WESTERN 49X
MILLINGTON BRISK 7005
KWA MS ROCK 22Z
Dam: KOP CROSBY 137W
SPRINGCREEK B GOLD 96Z
SPRINGCREEK LINNE 2U

CE: 5.6 **BW:** 2.5 **WW:** 74.2 **YW:** 112.6 **MILK:** 31.9 **MCE:** 3.2

HOMO POLLED - PUREBRED

We recently added Brisk for the red baldy influence. His dam is a 9 year old cow, with a beautiful udder and baldy colour. There are a strong set of Brisk sons in the sale.



lot 24

24

MAR MAC ESQUIRE 145J

1355619 KOB 145J 16-FEB-21 CE: *

bw
98 lbs
act ww
792 lbs
dam wt %
7.10%

Sire: MILLINGTON BRISK 7005
KKBS RED BRISK 43G
SPRINGCREEK B GOLD 96Z
Dam: DOUBLE BAR D ROYAL 445D
MAR MAC ESQUIRE 127F
MAR MAC CARLC 308B

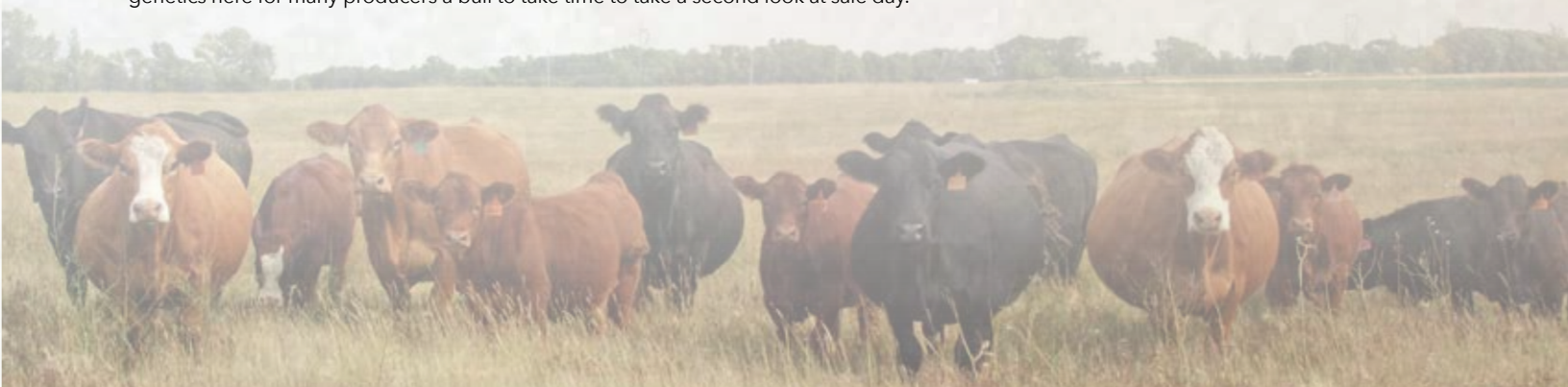
CE: 7.3 BW: 3.2 WW: 71.6 YW: 106.8 MILK: 30.3 MCE: 3.8



DAM - 127F

HOMO POLLED - PUREBRED

You will drive a lot of miles to find a red baldy bull with the hair coat, depth of rib and well-balanced son of our new herd sire, Brisk. His dam is an elite Red Baldy female in our herd that goes back to the *Carli Cow Family*. 127F's son sold in last years bull sale to Corey Desrochers. Some outcross genetics here for many producers a bull to take time to take a second look at sale day.



VIDEOS ONLINE @CATTLEVIDS.CA

MAR MAC SIMMENTAL



25

MAR MAC JASPER 21J

1355609 KOB 21J 21-JAN-21 CE: *

bw
98 lbs
act ww
780 lbs
dam wt %
6.80%

Sire: MILLINGTON BRISK 7005
KKBS RED BRISK 43G
SPRINGCREEK B GOLD 96Z

Dam: MAR MAC REVOLUTION 127C
DELIGHT ROSANNA 314E
DELIGHT MS RENEGADE 314A

CE: 2.5 BW: 5.1 WW: 73.0 YW: 103.3 MILK: 30.4 MCE: 1.6

HOMO POLLED - PUREBRED

A solid made baldy son of the Brisk bull who left a strong set of calves the first year and out of a Delichte Simmental red baldy female, we purchased at the Pembina Triangle Sale. It would be great to have a load of steers with the baldy face and natural thickness.



26

MAR MAC JACOB 125J

1355580 KOB 125J 11-FEB-21 CE: **

bw
86 lbs
act ww
668 lbs
dam wt %
6.61%

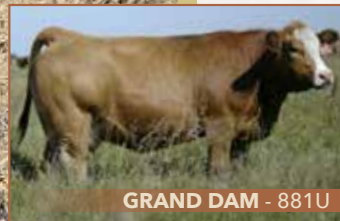
Sire: MILLINGTON BRISK 7005
KKBS RED BRISK 43G
SPRINGCREEK B GOLD 96Z

Dam: IPU MARKSMAN 54A
MAR MAC DEBRA 101C
D BAR C DEB 881U

CE: 6.6 BW: 2.1 WW: 66.6 YW: 98.5 MILK: 24.8 MCE: 3.1

HOMO POLLED - PUREBRED

Moderate framed meaty son of Brisk and out of the *D Bar C Deb Cow Family* who worked so well in our Simmental program.



27

MAR MAC JEFFERSON 132J

1355602 KOB 132J 13-FEB-21 CE: *

bw
100 lbs
act ww
770 lbs
dam wt %
7.14%

Sire: TNT BOOTLEGGER Z268
MAR MAC UTAH WHISKY 52E
MAR MAC UTAH'S DREAM 79U

Dam: WFL WESTCOTT 24C
BERTS MS ELITE 33E
BERTS MS BONNIE 12B

CE: 5.2 BW: 4.1 WW: 80.7 YW: 112.8 MILK: 25.4 MCE: 1.0

POLLED - PUREBRED

A Utah Whiskey son that would be a full brother to the female that Big Sky Simmentals purchased in our Fall Female Sale. The Utah Whiskey daughters were an impressive group at the sale, and we feel will make some productive females in the future.



**HOMO POLLED
HETERO BLACK
PUREBRED**
Night Hawk was used for some outcross genetics in our Simmental Program. 59J's dam is the grandmother of 145J in the sale. The *Carli Cow Family* has left performance and length in our Simmental program. Add pounds with this power bull, who will make \$\$\$\$ in your pocket.



Lot 28

28 MAR MAC NIGHT HAWK 59J

1355555 KOB 59J 28-JAN-21 CE: *

bw
102 lbs
act ww
828 lbs
dam wt %
7.03%

Sire: LFE TRIUMPH 816A
LFE NIGHT HAWK 3013D
LFE RRS CIARA 2158Z
Dam: SWAN LAKE TOMBSTONE 40Y
MAR MAC CARLC 308B
MAR MAC CARLI 14N

CE: 9.1 **BW:** 2.8 **WW:** 77.7 **YW:** 117.4 **MILK:** 17.6 **MCE:** 5.0

29 MAR MAC SWAYZE 62J

1357087 KOB 62J 28-JAN-21 CE: **

bw
90 lbs
act ww
810 lbs
dam wt %
6.68%

Sire: R PLUS 5015C
R PLUS SWAYZE 7083E
MISS R PLUS 4059B
Dam: IPU MARKSMAN 54A
MAR MAC STEEL BLUE 202E
MAR MAC ZULU 71Z

CE: 5.6 **BW:** 3.5 **WW:** 85.0 **YW:** 124.4 **MILK:** 27.8 **MCE:** 1.6

**HOMO POLLED
HOMO BLACK
PUREBRED**

In our 2018 Female Sale this female was one of the choice lots, we are very pleased she was able to continue here at Mar Mac. Her son out of Utah Whiskey sold to George Farms last year. There is no semen for sale on Swayze so a great opportunity to enhance your program.

This stout, growth Swayze son will add some pounds and length to his progeny.



Lot 29

MAR MAC SIMMENTAL



lot 30

30 MAR MAC MR SWAYZE 50J

1357095 KOB 50J 26-JAN-21 CE: **

bw
88 lbs
act ww
880 lbs
dam wt %
6.90%

R PLUS 5015C
Sire: R PLUS SWAYZE 7083E
MISS R PLUS 4059B
WHEATLAND EL TORO 958W
Dam: MAR MAC ZULU 71Z
MAR MAC SORORITY GIRL112W

CE: 7.8 BW: 2.6 WW: 86.6 YW: 127.7 MILK: 28.9 MCE: 3.5

POLLED - BLACK - PUREBRED

Swayze was used for some outcross genetics to our herd and a strong set of Bull and Heifer Calves are at Mar Mac Farms. 71Z goes back to the *Carli Cow Family* and has 2 daughters working in our program. The Simmental breed is known to add pounds to your calf crop and this bull will do just that with a moderate birth weight.



lot 31

31 MC-THREE SWAYZE 54J

1358575 TJM 54J 27-JAN-21 CE: *

bw
102 lbs
act ww
815 lbs
dam wt %
6.70%

R PLUS 5015C
Sire: R PLUS SWAYZE 7083E
MISS R PLUS 4059B
MRL PREDESTINED 63B
Dam: MAR MAC CARLI 81E
MAR MAC CARLI 86X

CE: 4.7 BW: 3.5 WW: 86.1 YW: 120.7 MILK: 23.0 MCE: 1.1

HOMO POLLED - HETERO BLACK - PUREBRED

The *Carli Cow Family* does not disappoint and this bull is no exception. I purchased his dam in the 2018 Mar Mac Female Sale. She has done an awesome job on this blaze face bull.

Owned by Mc-Three Farms

Mc-Three Farm

TYSON MCRAE - 204-726-3205



lot 32

32 MC-THREE BRISK 63J

1358577 TJM 63J 31-JAN-21 CE: *

bw
108 lbs
act ww
710 lbs
dam wt %
7.40%

MILLINGTON BRISK 7005
Sire: KKBS RED BRISK 43G
SPRINGCREEK B GOLD 96Z
MAR MAC JOHNNY CASH 102A
Dam: MC-THREE ROSIE 61F
DMJ MISS 32C

CE: 6.2 BW: 4.8 WW: 72.3 YW: 108.7 MILK: 24.6 MCE: 2.7

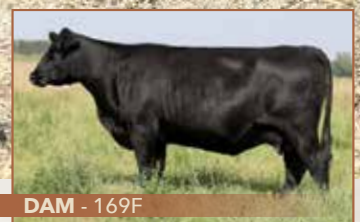
HOMO POLLED - PUREBRED

Here is a strong Homo Polled Brisk calf ready to breed some cows on any commercial or purebred farm.

Owned by Mc-Three Farms



Lot 33



DAM - 169F

33 **MAR MAC JORDAN 120J**
 2204493 KOF 120J 9-FEB-21 CE: ***

CE: 9.0 BW: 0.2 WW: 42 YW: 71 MILK: 29 MCE: 12.0

bw
70 lbs
act ww
672 lbs
dam wt %
5.38%

Sire: MERIT STONEY CREEK 4023
 MERIT STONEY CREEK 7035E
 MERIT BLACKCLASS 1184
 Dam: MAR MAC BLACK RIDGE 15B
 MAR MAC BRIDGET 169F
 MAR MAC BRIDGET 4D

PARENT VERIFIED

Stoney Creek is a true breeding bull, his females were well accepted in the 2021 Angus Dispersal. His dam *Bridget Cow Family* sold to Black Creek Angus. 169F a young March 3 year old did a whale of a job on this bull. Calving ease, smooth made, well balanced, stylish Stoney Creek son that will catch your eye when you walk in the pen.

BLACK ANGUS

2022 BREED AVERAGE EPDS -- CE 3.3 BW 2.1 WW 49 YW 86 MILK 22 MCE 6.7

Herdsire

MERIT STONEY CREEK 7035E
 1986184 MSL 7035E 1-FEB-17

BW:
79 lbs
WW:
745 lbs

Sire: HF PROWLER 43U
 MERIT STONEY CREEK 4023
 MERIT PRIDE 2010
 Dam: BEVERLY HILLS VISA 734
 MERIT BLACKCLASS 1184
 MERIT BLACKCLASS 5195

CE: 2.0 BW: 3.1 WW: 51 YW: 79 MILK: 25 MCE: 11.0

This bull sold in the 2021 Angus Dispersal Sale consigned by McRae Land and Livestock selling to 66 Ranch, Alberta. There are a strong set of Stoney Creek sons in this offering and if they do the job he did will be assets to many programs. Easy fleshing, thick made, long bodied bulls and his daughters were sale features in the fall sale.





Lot 34

34

MAR MAC STUNNER 27J

2204478 KOF 27J 23-JAN-21 CE: ***

bw
80 lbs
act ww
657 lbs
dam wt %
7.00%

Sire: LD CAPITALIST 316
MUSGRAVE 316 STUNNER
MCATL BLACKBIRD 831-1378

Dam: HF TOMAHAWK 229E
MAR MAC LILY 157G
MAR MAC LILY 78C

CE: 4.0 BW: 1.7 WW: 63 YW: 112 MILK: 27 MCE: 2.0

PARENT VERIFIED

This bulls Tomahawk mother from the *Bridget Cow Family* was a sale feature in the dispersal selling to Ferme Gagnon, Quebec for \$12,000. A two-year old's first calf that is stout made, smooth, easy fleshing and has a lot of future ahead of him. He has been one of the favorites all summer. Look at his EPDS's a calving ease sire with numbers in the top 5 % for Weaning and Yearling weight. Don't miss the opportunity to select this herd bull prospect, you won't be disappointed.



DAM - 157G



GRAND DAM - 78C





Lot 35

35

MAR MAC JASPER 66J

2204483 KOF 66J 29-JAN-21 CE: **

bw
88 lbs
act ww
706 lbs
dam wt %
7.15%

Sire: LD CAPITALIST 316
MUSGRAVE 316 STUNNER
MCATL BLACKBIRD 831-1378

Dam: HF TOMAHAWK 229E
MAR MAC ANNIE 135G
VALLEY BLOSSOM ANNIE K 224Y



DAM - 135G

CE: 2.0 BW: 3.0 WW: 64 YW: 113 MILK: 29 MCE: 2.0

PARENT VERIFIED

There was one female that caught your eye in the Female Dispersal was 135G from the **Sandy Bar Annie K CowFamily**. The Tomahawk females were sale features and 135G was the High Selling Female to Hawkeye Ranching, Tompkins, SK for \$16,500. Weaning off at 706 lbs and a two-year-old's first calf what else could you ask for. The parentage in this bull with Cowboy Up, Tiger, Sandy Bar Ideal and Annie K this is a bull you could build a program around. This bull continues to excel. Check him out at Mar Mac Farms.



MAR MAC STUNNER 66J

23

DAM 135G

MAR MAC BLACK ANGUS



Lot 36

36

MAR MAC STUNNER 5J

2204474 KOF 5J 19-JAN-21 CE: ***

bw
68 lbs
act ww
693 lbs
dam wt %
4.11%

Sire: LD CAPITALIST 316
MUSGRAVE 316 STUNNER
MCATL BLACKBIRD 831-1378

Dam: TURIHAUA REX E297
MAR MAC ALETA 26D
BROOKMORE ALETA 131X

CE: 3.5 BW: 1.1 WW: 56 YW: 91 MILK: 23 MCE: 3.0

PARENT VERIFIED

Lot 36 & 37 are a set of Stunner twins, 5J nursed on his dam who sold in the sale to Nolan Cattle Co.



DAM - 26D



Lot 37

37

MAR MAC STUNNER 6J

2204475 KOF 6J 19-JAN-21 CE: ***

bw
62 lbs
act ww
596 lbs
dam wt %
3.75%

Sire: LD CAPITALIST 316
MUSGRAVE 316 STUNNER
MCATL BLACKBIRD 831-1378

Dam: TURIHAUA REX E297
MAR MAC ALETA 26D
BROOKMORE ALETA 131X

CE: 3.5 BW: 1.1 WW: 56 YW: 91 MILK: 23 MCE: 3.0

PARENT VERIFIED

Lot 36 & 37 are a set of Stunner twins, 6J nursed on 75E who sold to Ed and Lori Goodrich.



Lot 38

38

MAR MAC POUNDMAKER 12J

2204694 KOF 12J 20-JAN-21 CE: **

bw
90 lbs
act ww
787 lbs
dam wt %
6.08%

Sire: VERMILION PAYWEIGHT J847
BASIN PAYWEIGHT 025S
BASIN LUCY 3829

Dam: COLE CREEK CEDAR RIDGE 1V
MAR MAC BRIDGET 13B
MCRAE'S BRIDGET 33U*

CE: 5.0 BW: 1.8 WW: 50 YW: 95 MILK: 29 MCE: 7.0

PARENT VERIFIED

This calf stood out all summer, and his unique genetics with Basin Payweight 025S being a full brother to the sire of Payweight 1682. His dam is the *Bridget Cow Family* and her daughter sold in the Dispersal Sale to Angus Valley Farm. Some outcross genetics in this moderate framed, thick meaty bull.



DAM - 13B



PARENT VERIFIED
 Payweight son out of a Cedar Ridge Granddaughter who always puts everything into her calf. He weaned off at 732 lbs. From the **Brandi Cow Family**, she has sons working in the Emma Fox and Ellie Nolan herd and 90D sold in the Dispersal to Nolan Cattle Company. If you like them thick, meaty, moderate framed here is the bull for you.



Lot 39

39 MAR MAC PAYWEIGHT 39J

2204697 KOF 39J 25-JAN-21 CE: **

bw
86 lbs
act ww
732 lbs
dam wt %
6.16%

Sire: VERMILION PAYWEIGHT J847
 BASIN PAYWEIGHT 025S
 BASIN LUCY 3829

Dam: MAR MAC BLACK RIDGE 15B
 MAR MAC CASSIDY 90D
 MCRAE'S CASSIDY 111W

CE: 2.0 BW: 3.3 WW: 46 YW: 92 MILK: 29 MCE: 5.0

40 MAR MAC JUNIOR 136J

2204495 KOF 136J 13-FEB-21 CE: *

bw
96 lbs
act ww
684 lbs
dam wt %
6.48%

Sire: MERIT STONEY CREEK 4023
 MERIT STONEY CREEK 7035E
 MERIT BLACKCLASS 1184

Dam: S A V SENSATION 5615
 MAR MAC BRANDI 46F
 MCRAES BRANDI 9T

CE: -2.0 BW: 4.3 WW: 56 YW: 95 MILK: 22 MCE: 6.0

PARENT VERIFIED

Here is a bull with a little more frame like his mother and added length of body.

His dam is from the **Brandi Cow Family**. 46F sold in the sale to Elkridge Farms. This 3-year-old, her first son sold to Joe Bouchard

in 2021 and this powerful Stoney Creek son is her second calf. Add and growth length with his bull.



DAM - 46F



Lot 40

MAR MAC BLACK ANGUS



DAM - 71F

41

MAR MAC STONEY CREEK 141J

2204497 KOF 141J 15-FEB-21 CE: ***

bw
80 lbs
act ww
623 lbs
dam wt %
6.20%

Sire: MERIT STONEY CREEK 4023
MERIT STONEY CREEK 7035E
MERIT BLACKCLASS 1184

Dam: CORNERGLEN INSIGHT 50C
MAR MAC ANNIE 71F
VALLEY BLOSSOM ANNIE K 224Y

CE: 6.0 BW: 1.7 WW: 39 YW: 63 MILK: 26 MCE: 11.0

PARENT VERIFIED

Stoney Creek Son out of another daughter of the *Sandy Bar Annie K Cow Family*. 71F was purchased by KS Cattle Corp, SK in the Dispersal. Here is a bull for the heifer pen with some strong calving ease and maternal numbers.



DAM - 52B

42

MAR MAC TURNING POINT 151J

2212248 KOF 151J 20-FEB-21 CE: *

bw
98 lbs
act ww
703 lbs
dam wt %
5.60%

Sire: PLATTEMERE WEIGH UP K360
STEVENSON TURNING POINT
STEVENSON PRIDE I167X

Dam: S A V RESOURCE 1441
MAR MAC BRIDGET 52B
MCRAES BRIDGET 125T

CE: 7.0 BW: 2.7 WW: 58 YW: 108 MILK: 18 MCE: 5.0

PARENT VERIFIED

A *Bridget Cow Family* cow bull out of one of the easy keeping SAV Resource females we sold to Deep Lake Livestock, SK. Lots of hair, a performance power bull here. Some new genetics with Turning Point.



DAM - 212B

43

MAR MAC JUSTUS 58J

2204481 KOF 58J 28-JAN-21 CE: ***

bw
74 lbs
act ww
700 lbs
dam wt %
4.72%

Sire: CONNEALY JUDGMENT
KG JUSTIFIED 3023
KG MISS MAGIC 1443

Dam: BNC GAME CHANGER 1Y
BLAIR'S ELBA 212B
SOO LINE ELBA 0375

CE: 10.0 BW: -1.1 WW: 47 YW: 76 MILK: 25 MCE: 8.0

PARENT VERIFIED

Bet the ranch heifer bull. Mar Mac used Justified in our program to produce some heifer bulls for our customers heifer pens and he did just that. Moderate framed, thick, and calving ease out of a Blair's female we had the misfortune of losing her to an injured.



PARENT VERIFIED
 A grandson of HF Tomahawk, the sire that many of our top females were out of in the Dispersal Sale. Allstar like Tomahawk left easy fleshing, stylish offspring. 157J's dam was the Lot 2 female in the Dispersal selling to Nessel Lake Angus, SK. This direct **Bridget Cow Family** daughter of the calving ease HF Tiger, she never let us down. Her son sold to Squirrel Creek Angus in the 2020 Bull Sale. There will not be any more Tomahawks as we had the misfortune of losing him, so here is an opportunity to select proven genetics that work.



DAM - 1C

Lot 44

44 MAR MAC JACOB 157J
 2212247 KOF 157J 25-FEB-21 CE: ***

bw
78 lbs
act ww
638 lbs
dam wt %
5.16%

Sire: HF TOMAHAWK 229E
 MAR MAC ALL STAR 101G
 MAR MAC BRIDGET 58D
 HF TIGER 5T
 Dam: MAR MAC BRIDGET 1C
 MAR MAC BRIDGET 23A

CE: 10.0 BW: 0.4 WW: 43 YW: 88 MILK: 21 MCE: 10.0

45 MAR MAC FINLEY 103J
 2204486 KOF 103J 6-FEB-21 CE: *

bw
98 lbs
act ww
779 lbs
dam wt %
5.76%

Sire: YOUNG DALE HI DEFINITION 185B
 YOUNG DALE FINLEY 90F
 YOUNG DALE ELBA 24W
 Dam: MAR MAC BLACKBERRY 155X
 MAR MAC BERRY 178C
 MCRAES POWER POINT 91T

CE: -1.0 BW: 4.8 WW: 59 YW: 100 MILK: 23 MCE: 5.0

SIRE VERIFIED

The Finley sons add performance and length of body.

46 MAR MAC JUSTIN 68J
 2204484 KOF 68J 29-JAN-21 CE: ***

bw
72 lbs
act ww
650 lbs
dam wt %
5.02%

Sire: CONNEALY JUDGMENT
 KG JUSTIFIED 3023
 KG MISS MAGIC 1443
 S A V RESOURCE 1441
 Dam: MAR MAC BRIDGET 58D
 MCRAES BRIDGET 125T

CE: 12.0 BW: -1.6 WW: 44 YW: 87 MILK: 23 MCE: 8.0

PARENT VERIFIED

Another Justified heifer bull out of Lot 1 the Resource **Bridget Cow Family** female that sold to Peter Graham, MB in the sale. A proven mother cow whose sons have averaged \$ 6375 in the bull sales. Moderate framed thick, Bet the ranch calving ease sire.



DAM - 58D





Angus Valley Farm
 BRUCE MCRAE -- 204-242-4502

47 **ANGUS VALLEY TURNING POINT 1H**
 2233745 WFM 1H 28-DEC-20 CE: ***

bw
66 lbs
act ww
749 lbs

Sire: PLATTEMERE WEIGH UP K360
 STEVENSON TURNING POINT
 STEVENSON PRIDE I167X

Dam: POSS ELEMENT 215
 ANGUS VALLEY TIBBIE 40G
 SCC TIBBIE 36Z

CE: 17.0 BW: -2.5 WW: 49 YW: 85 MILK: 22 MCE: 14.0

The Dam has a beautiful udder. Heifer Bull.



48 **ANGUS VALLEY PULSE 3J**
 2233744 WFM 3J 2-JAN-21 CE: ***

bw
69 lbs
act ww
756 lbs

Sire: MOHNEN HEARTRATE 1751
 MOHNEN PULSE 533
 MOHNEN JILT 2360

Dam: S A V RESOURCE 1441
 ANGUS VALLEY TIBBIE 33G
 ANGUS VALLEY TIBBIE 4B

CE: 10.0 BW: -1.6 WW: 50 YW: 94 MILK: 26 MCE: 5.0

The Dam has a beautiful udder. Heifer Bull.



49 **ANGUS VALLEY PAYWEIGHT 8J**
 2233742 WFM 8J 4-JAN-21 CE: *

bw
98 lbs
act ww
776 lbs

Sire: BASIN PAYWEIGHT 006S
 BASIN PAYWEIGHT 1682
 21AR O LASS 7017

Dam: MERIT HEAVY METAL 5093
 HLC BLACKBIRD 164E
 DOUBLE D BLACKBIRD 93U

CE: -2.0 BW: 3.6 WW: 57 YW: 105 MILK: 26 MCE: 3.0

The Dam has a lot of power in her pedigree.

I would like to thank all the past and future buyers and bidders! 2021!! Wow I had to give up hay fields to holistic graze my cattle. I have worked hard to develop bulls that will go out and work for producers. My consignment is some cool calving ease guys and some stout herd sires. Give me a call anytime - Bruce

50 **ANGUS VALLEY PAYWEIGHT 10J**
2233741 **WFM 10J** 18-JAN-21 **CE: ****

bw
88 lbs
act ww
780 lbs

Sire: BASIN PAYWEIGHT 006S
BASIN PAYWEIGHT 1682
21AR O LASS 7017
Dam: NRA PIONEER 34Z
DFCC 34Z DARA 25D
DFCC 32T FOREVER 9W

CE: 4.0 BW: 1.5 WW: 51 YW: 93 MILK: 28 MCE: 7.0

This guy is a cool looking dude. Lois selected the dam of this fella at the Touch of Class Sale a few year's back from Double F.



lot 50

51 **ANGUS VALLEY IBULL 12J**
2233740 **WFM 12J** 22-JAN-21 **CE: ***

bw
90 lbs
act ww
770 lbs

Sire: S A V RENOWN 3439
SCHIEFELBEIN IBULL 3415
FROSTY UPWARD 1100
Dam: MOGCK BULLSEYE
TSN DARLING 18D
TSN DARLING 107Y

CE: -2.0 BW: 3.6 WW: 56 YW: 98 MILK: 26 MCE: 7.0

All I Bull Calves have a lot of performance.
His dam is a smaller framed cow.



lot 51

52 **ANGUS VALLEY RENOVATION 14J**
2233739 **WFM 14J** 4-FEB-21 **CE: ***

bw
94 lbs
act ww
842 lbs

Sire: S A V RENOWN 3439
S A V RENOVATION 6822
S A V MADAME PRIDE 0151
Dam: YOUNG DALE ABSOLUTE 113A
ANGUS VALLEY ERICA 9D
YOUNG DALE ERICA 95B

CE: 2.0 BW: 3.4 WW: 68 YW: 121 MILK: 22 MCE: 3.0

An easy fleshing bull. You will like the Weaning Weight.
I sold the first heifer calf off this cow to Emma Harms her first love.
She had a pretty good go in the show ring that year.



lot 52

McRae Land & Livestock

A PROFITABLE, ENJOYABLE, BUSINESS THAT STRIVES TO IMPROVE LAND, LIVESTOCK AND LIVES

BRETT & CHANTEL MCRAE
204-729-1018
BRETT.MCRAE@ICLOUD.COM

Psssst Hey You!

Yes, you there! Are you looking for quality, maternally bred bulls that you can build a cow herd with? Good! You have come to the right place! This year's offering from McRae Land & Livestock features some very exciting bulls that are sure to compliment and build on the maternal strengths of your cow herd. If you are looking for rock solid, sleep-at-night calving ease bulls that still have some shape and style, check out the Pinebank and Chisum sons.

Cow bull more what you are after? Take a look at the Stoney Creek or Rex sons, they are sure to give you the performance you crave, yet still sire heifer calves that you will want to keep around. As you have come to expect, all of the bulls have been scored for feet, docility and calving ease to make your decision on what bull is right for you a little bit easier.

All of these bulls were born on pasture, wintered with their mothers until January, and then slow grown to make them last and work for you. We look forward to seeing you at the sale!

Brett & Chantel McRae



ALL BULLS HAVE BEEN **ANGUS** TESTED
 Bulls were weaned and vaccinated December 2021



Lot 53

DAM - 44C

53

MCRAE'S PINEBANK 411H

2180550 MCLL 411H 28-APR-20 CE: ***

CE: 12.0 BW: -0.8 WW: 39 YW: 57 MILK: 18 MCE: 8.0

bw
71 lbs

Sire: PINEBANK WAIGROUP 41/97
 H A R PINEBANK 443 202
 DDA STELLA 443

FEET - 8 DOCILITY - 8

ww
606 lbs

Dam: WIWA CREEK DENSITY 36'13
 SANDY BAR PRIDE 44C
 SANDY BAR PRIDE 109A

411H is a full brother to Lot 58 of last year's sale, who sold to Art & Jackie Jonasson. He is also the son of our high selling cow in the New Generation Female Sale this past December. 411H is masculine, long bodied and very stylish.

54

MCRAE'S PINEBANK 409H

2180548 MCLL 409H 28-APR-20 CE: ***

bw
80 lbs

Sire: PINEBANK WAIGROUP 41/97
H A R PINEBANK 443 202
DDA STELLA 443

ww
544 lbs

Dam: PEAK DOT RADIANCE 146A
SANDY BAR PRINCESS 137D
FARVIEW PRINCESS 161Z

CE: 12.0 BW: -1.2 WW: 28 YW: 51 MILK: 28 MCE: 13.0

FEET - 8 DOCILITY - 8

Here is a bull that just keeps getting better every day! He is Long, Deep, and Thick. It is hard to find a bull with this much volume, style, and thickness AND have this much calving ease!



DAM - 137D



55

MCRAE'S PINEBANK 403H

2180546 MCLL 403H 25-APR-20 CE: ***

bw
75 lbs

Sire: PINEBANK WAIGROUP 41/97
H A R PINEBANK 443 202
DDA STELLA 443

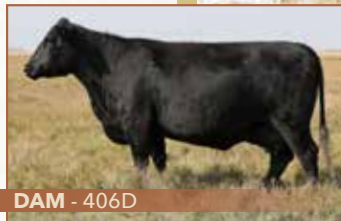
ww
512 lbs

Dam: COLE CREEK CEDAR RIDGE 1V
MAR MAC BM TRADITION 406D
MAR MAC TRADITION 115B

CE: 8.0 BW: 0.1 WW: 41 YW: 67 MILK: 19 MCE: 11.0

FEET - 5 DOCILITY - 5

This is a very deep bodied, easy fleshing bull out of a deep bodied, easy fleshing cow. If you are looking for a bull that can winter on snowballs and sunshine, he's your guy!



DAM - 406D



56

MCRAE'S REX 416H

2180451 MCLL 416H 30-APR-20 CE: *

bw
94 lbs

Sire: TURIHAUA TEXAN B141
TURIHAUA REX E297
TURIHAUA B48

ww
465 lbs

Dam: WALKERBRAE WARRIOR 116Z
SANDY BAR QUEENETTE 120C
SANDY BAR QUEENETTE 93Z

CE: 0.0 BW: 1.3 WW: 26 YW: 45 MILK: 14 MCE: 7.0

FEET-7 DOCILITY-7

The one and only Rex bull in this year's sale. 416H is a moderate framed bull with lots of hair. His dam is also moderate framed and has produced many good bulls!



DAM - 120C





**FEET-7
DOCILITY-8**
402H is thick and hairy bull that is very clean fronted and has nice head. He is out of a moderate framed cow and he is a great combination of calving ease and performance!



DAM - 442F

Lot 57

57

MCRAE'S CHISUM 402H

2180445 MCLL 402H 22-APR-20 CE: ***

bw
78 lbs

Sire: S CHISUM 6175
S CHISUM 255
S BLOSSOM 0278

ww
534 lbs

Dam: CORNERGLEN INSIGHT 50C
MCRAE'S INSIGHT 442F
JOHNSTON F.A. TRADITION 858Z

CE: 8.0 BW: 1.6 WW: 53 YW: 96 MILK: 29 MCE: 10.0

58

MCRAE'S CHISUM 427H

2180453 MCLL 427H 6-MAY-20 CE: **

bw
88 lbs

Sire: S CHISUM 6175
S CHISUM 255
S BLOSSOM 0278

ww
538 lbs

Dam: COLEMAN KNIGHT 209
MCRAE'S ANNIE K 405F
MAR MAC BM ANNIE K 407D

CE: -2.0 BW: 4.3 WW: 56 YW: 95 MILK: 22 MCE: 6.0

**FEET-6
DOCILITY-8**

Here is a deep bodied bull that is very smooth fronted.

He is quiet, and is a blend of both calving ease and performance.



DAM - 405F

Lot 58

59

MCRAE'S STONEY CREEK 412H

2180449 MCLL 412H 29-APR-20 CE: *

bw
85 lbs

Sire: MERIT STONEY CREEK 4023
MERIT STONEY CREEK 7035E
MERIT BLACKCLASS 1184

ww
628 lbs

Dam: SCHURR 77 801 7029
SANDY BAR JEMINA 27C
SANDY BAR JEMINA 102T

CE: -4.0 **BW:** 3.8 **WW:** 48 **YW:** 79 **MILK:** 17 **MCE:** 8.0

FEET-7 DOCILITY-7

Here is a hairy, long bodied bull out of a high performance Sandy Bar cow. 27C produces big, thick, good calves and this bull is no exception.



DAM - 27C



60

MCRAE'S BULL 438H

2180459 MCLL 438H 20-MAY-21 CE: *

bw
90 lbs

Sire: MERIT STONEY CREEK 4023
MERIT STONEY CREEK 7035E
MERIT BLACKCLASS 1184

ww
565 lbs

Dam: DB OBJECTIVE TREND 861
SANDY BAR PRIDE 172C
SANDY BAR PRIDE 85S

CE: 6.0 **BW:** 2.3 **WW:** 42 **YW:** 71 **MILK:** 25 **MCE:** 10.0

FEET-7 DOCILITY-7

This is a stout, masculine, long bodied bull. His dam, 172C, is a long bodied, moderate framed cow that has a reputation for producing great bull calves.



DAM - 172C



61

MCRAE'S STONEY CREEK 421H

2180452 MCLL 421H 2-MAY-20 CE: *

bw
90 lbs

Sire: MERIT STONEY CREEK 4023
MERIT STONEY CREEK 7035E
MERIT BLACKCLASS 1184

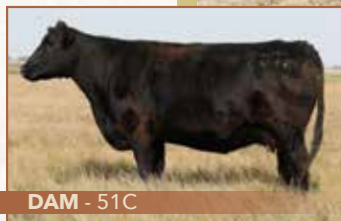
ww
633 lbs

Dam: SCHURR 77 801 7029
SANDY BAR JEMINA 51C
SANDY BAR JEMINA 131U

CE: 3.0 **BW:** 1.7 **WW:** 42 **YW:** 71 **MILK:** 23 **MCE:** 10.0

FEET-7 DOCILITY-8

Here is a long bodied, masculine bull out of one of my favourite cows. 51C is thick, deep bodied, and very stylish.



DAM - 51C





Lot 62

DAM - 33C

62

MCRAE'S BULL 439H

2180459 MCLL 439H 21-MAY-20 CE: *

CE: 1.0 BW: 2.6 WW: 43 YW: 76 MILK: 28 MCE: 9.0

bw
95 lbs

Sire: MERIT STONEY CREEK 4023
MERIT STONEY CREEK 7035E
MERIT BLACKCLASS 1184

FEET-7 DOCILITY-7

439H is a bull with a lot of volume! Long bodied and deep ribbed, and out of a large framed, high performance cow. Here is a bull that will add some pounds.

ww
563 lbs

Dam: SCHURR 77 801 7029
SANDY BAR DELIA 33C
SANDY BAR DELIA 232Y

63

MCRAE'S BULL 436H

CM523540 MCLL 436H 19-MAY-20 CE: *

bw
98 lbs

Sire: ANGUS BULL

ww
529 lbs

Dam: SCHURR 77 801 7029
SANDY BAR NEONIA 36C
SANDY BAR NEONIA 89W

CE: - BW: - WW: - YW: - MILK: - MCE: -

FEET-7 DOCILITY-7

This bull is moderate framed, long bodied and has lots of hair.
Selling as a commercial bull - No Papers



64

MCRAE'S BULL 435H

2180457 MCLL 435H 16-MAY-20 CE: **

bw
84 lbs

Sire: MERIT STONEY CREEK 4023
MERIT STONEY CREEK 7035E
MERIT BLACKCLASS 1184

ww
520 lbs

Dam: SCC TEN X 17C
MAR MAC BM QUEENETTE 116E
SANDY BAR QUEENETTE 120C

CE: 8.0 BW: 1.1 WW: 32 YW: 47 MILK: 22 MCE: 15.0

FEET-7 DOCILITY-4

This is a long bodied, thick bull that will work on cows or larger heifers.

RED ANGUS



Lot 65



65

RED MCRAE'S RIPZONE 440H

2180461 MCLL 440H 27-MAY-20 CE: *

CE: -7.0 BW: 3.9 WW: 52 YW: 88 MILK: 33 MCE: -6.0

bw
90 lbs

Sire: RED SOO LINE CASH 9161
RED MOOSE CREEK RIPZONE 89D
RED MOOSE CREEK LAUREL 79A

FEET-7 DOCILITY-5

Thick, Deep, and Stout are words that describe 440H. He is an impressive bull and a full brother to Lot 61 of last year's sale who sold to Ross & Wanda Kemp. His dam, 410D is a herd bull producing machine!

ww
571 lbs

Dam: RED BROWN JYJ REDEMPTION Y1334
RED MAR MAC BM QUEEN 410D
RED MCRAES QUEEN 25X



66

RED MCRAE'S RIPZONE 430H

2180455 MCLL 430H 11-MAY-20 CE: *

bw
86 lbs

Sire: RED SOO LINE CASH 9161
RED MOOSE CREEK RIPZONE 89D
RED MOOSE CREEK LAUREL 79A

ww
588 lbs

Dam: RED BROWN JYJ REDEMPTION Y1334
RED MAR MAC BM QUEEN 402D
RED MAR MAC QUEEN 44B

CE: 2.0 BW: 0.7 WW: 36 YW: 69 MILK: 26 MCE: 5.0

FEET-7 DOCILITY-7

Here is a bull that is long bodied as will work well on cows.



67

RED MCRAE'S DOMAIN 424H

2180553 MCLL 424H 3-MAY-20 CE: **

bw
87 lbs

Sire: RED BECKTON DOMINOR T122 Z1
RED 3SCC DOMAIN A163
RED 3SCC EUCLA X723

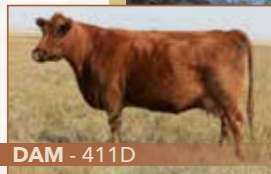
ww
629 lbs

Dam: RED BROWN JYJ REDEMPTION Y1334
RED MAR MAC BM QUEEN 411D
RED MAR MAC QUEEN 178A

CE: 1.0 BW: 2.6 WW: 61 YW: 106 MILK: 20 MCE: 4.0

FEET-7 DOCILITY-8

This Domain son is a very clean fronted and deep bodied bull. He is out of my favourite Red Angus Cow, 411D.





CUSTOMER SERVICE PLAN...

Give Mar Mac or any other of the consignors a call anytime... Call us a few days in advance of the sale with your bull needs and we will compile a list of bulls that we feel will work for you. As we are with the bulls everyday, we know the qualities in each bull. If we buy a bull for you sight unseen and you do not like him, you don't own him - no problem! Don't forget to check out the videos!

At the Mar Mac and Guests Bull Sale our 60 plus years of experience as a family run operation means CUSTOMER SERVICE is an important part of our business. We stand behind our bulls 100%, sight unseen purchase satisfaction, wintering program, personal contact after the sale of the bull and the coffee is always on for you to come and view our program.

BULL GUARANTEE...

All bulls have completed a breeding soundness evaluation. If your bull fails to be a satisfactory breeder, we will replace him with a bull of equal value or give you your money back. We make sure you will have a sound bull to service your cows. We will not provide a replacement if your bull has been miss managed. At no time shall the liability exceed the purchase price of your bull. **BULLS UNDER ONE YEAR OF AGE ON SEMEN TEST DAY WILL BE TESTED AFTER THEIR BIRTHDAY, BEFORE YOU NEED THEM.**

PIECE OF MIND...

Your new bull is a valuable asset and we recommend insuring your bull for infertility coverage and all risk mortality. If you are taking advantage of our wintering program, your new bull must be insured so we both have peace of mind. Insurance will be available from Keystone Livestock Services.

DELIVERY...

IF YOU PICK UP YOUR BULL AT THE FARM ON SALE DAY, YOU CAN SAVE \$200 PER BULL TO A MAX OF \$500 OFF THE PURCHASE PRICE.

We offer to board your bull free until April 15, after that at cost until you need him. **AS WELL, WE WILL DELIVER YOUR BULL FREE TO CENTRAL POINTS IN WESTERN CANADA OR THE US BORDER AND COST WILL BE SHARED TO EASTERN CANADA.** We will make every effort to get the bull to your farm. Delivery will be as close to the date you request your bull, but will be at our convenience. If you can not take your bull when we are in your area, we would appreciate if you made arrangements to pick up your bull.

CALVING EASE SCORE...

We evaluate each bull for calving ease determined by bone size, birth weight, birth weight EPD and profile. Scoring is as follows:

***** Recommended for use on moderate framed first calf heifers**

**** Recommended for use on well developed first calf heifers under supervision & cows.**

*** Recommended for use on cows.**

This system is just a suggestion, many other factors effect calving ease.

ACCIDENTS...

Although every precaution will be taken to protect the safety and comfort of the buyers, neither the sales staff, auctioneer or consignors assume any responsibility in this matter and disclaim any liability, legal or otherwise, in the event of an accident or loss of property.

TERMS...

The terms of the sale are cash or cheque payable in Canadian Funds. The right of property shall not pass until after settlement is made. All settlements must be made with the clerks before any cattle are released.

MAR MAC FARMS & GUESTS RESERVE THE RIGHT TO DRAW SEMEN ON ANY BULLS IN THE SALE FOR THEIR IN HERD USE.



MAR MAC FARMS IS A STRONG SUPPORTER OF BEEF PRODUCTION PROGRAMS



CONGRATULATIONS TO BRETT

At Agribition 2021, Brett McRae was awarded one of the Top 50 leaders in Agriculture in the Upstart Division



CELEBRATING 50 YEARS AT AGRIBITION



HIGH SELLING LOT 44 \$20,000 TO LEANING SPRUCE STOCK FARM

Thank You

2021 MAR MAC NEW GENERATION FEMALE SALE
FEATURING BLACK ANGUS DISPERSAL
DECEMBER 13, 2021

It was heartwarming to see the interest in our program and we really appreciate all your support, whether it was a buyer, bidder, watched on DLMS or stop in for a tour.

THANKS TO OUR SALE CREW
T BAR CATTLE CO.,
CASTLEROCK MARKETING,
BOHRSON MARKETING & DLMS
VOLUME BUYER
BIG IRON RANCH @ 7 HEAD

- | | |
|------------------------------|-----------------------|
| Angus Valley Farm (2)* | JP Cattle Co.* |
| Dominic Anderson (2)* | Leahy Stock Farm |
| AJ Angus | JF Leblond* |
| 5B Farms | Ryan Koetke* |
| Lee Baerg | KS Cattle Corp (2) |
| Bert's NR Simmentals* | Merit Cattle Co* |
| Big Sig Cattle Co. | McRae Land and |
| Black Creek Angus (3) | Livestock* |
| Maguire Blair (Blair's West) | Chris Moore (2)* |
| Brightwater Lake Ranch | Jason Mullin Farms* |
| Cambray Livestock | Neset Lake Angus (2) |
| Camo Cattle Co.* | Nolan Cattle Co* |
| Castlerock Marketing | Ossawa Angus (2)* |
| RC Chapman Farms (2) | Jeremy Pilkey* |
| Crowe Bros. | Pro Genetic |
| Deep Lake Livestock | Consulting (2)* |
| Donfield Farms (2) | 66 Ranch (3) |
| Double Bar D* | Jay Rimke* |
| Elk Ridge Farms (2) | Southern Angus |
| Ferme Gagnon Inc (3) | Shiloh Cattle Co.* |
| Freyburn Angus | Squirrel Creek (2)* |
| Hank and Maria Franken | Tambri Angus |
| Peter Graham (2) | Danny Waluk (2) |
| Ed and Lori Goodrich | Wheatley River Farm |
| Hawkeye Ranching* | Tyler Wray (2) |
| Hard Rock Land & Cattle Co. | Wray AG (2) |
| Haroldson's Polled Herefords | Yarrow Creek Farm (2) |
| | * repeat buyer |



RETURN TO:
MAR MAC FARMS
Blair & Lois McRae
RR 1 Box 57
Brandon, Manitoba R7A 5Y1



RETURN POSTAGE GUARANTEED
PORT DE RETOUR GARANTI

- Thanks for attending the Mar Mac Farms Bull Sale -



SIMMENTAL



RED ANGUS



BLACK ANGUS

OFFERING YEARLING AND COMING TWO YEAR OLDS