

# 11TH ANNUAL BULL SALE

*Bulls That Thrive In The Real World*



**SATURDAY  
2 MARCH  
2019 - 2PM  
SLS-SASKATOON, SK**



# THANK YOU

to all our new and repeat customers who purchased Ward's Red Angus Genetics in 2018!

**Thistle Ridge Angus, Taber, AB purchased our 2018 high seller.**

Allan McKenzie, Rosetown, SK\*  
 Bar PW Farms, Paul Wiens, Herschel, SK  
 Blairs.Ag Cattle Co., Lanigan, SK  
 Blake's Red Angus, Moose Jaw, SK  
 Brian Mannix, North Battleford, SK  
 Colborn Farms Ltd., Delisle, SK\*  
 Creekview Farms, Dallas Bessey, Hanley, SK  
 Dale Pollock, Delisle, SK  
 Daryl Curren, Delisle, SK  
 Dave Thompson, Delisle, SK  
 David McKenzie, Delisle, SK  
 Dylan Herning, Harris, SK\*  
 Elliott Lingrind, Calgary, AB  
 Foster's Rocky Top Ranch, Birch Hills, SK\*  
 Gerald Ewanchuk, Mayfair, SK  
 Gillridge Organics, Landis, SK  
 Gloria Longworth, Harris, SK  
 Gord Houston, Herschel, SK  
 Gregory Eppich, Handel, SK  
 JAS Red Angus, Neepawa, MB  
 Jim Kohut, Hafford, SK  
 Leon White, Fiske, SK

Leonard Penner, Hague, SK  
 Lloyd Bruner, Leask, SK  
 Lorne Bourassa, Plamondon, AB  
 Matador Pasture Co-operative Ltd., Doug Pittman, Kyle, SK\*  
 McElroy Farms, Calgary, AB  
 Norm McFarlane, Harris, SK  
 Paul Maffenbeier, Saskatoon, SK  
 Randy Norrie, Delisle, SK  
 Ritchie Farms, Jack Ritchie, Zealandia, SK  
 Rocky Schlaht, Leader, SK  
 Roger Nash, Biggar, SK  
 Shell River Ranch Inc., Shell Lake, SK\*  
 Thistle Ridge Angus, Ben Tams, Taber, AB  
 Trevor McKenzie, Rosetown, SK\*  
 Tyler Smith, Duck Lake, SK  
 White Rock Ranch, Nick Senik, Biggar, SK  
 Willner Elbow Grazing Co-op, Davidson, SK\*  
 WRAZ Red Angus, Wawota, SK

\*denotes Volume Buyers

**And welcome to the 11th Annual Ward's Red Angus Bull Sale!**





## 11TH ANNUAL BULL SALE

SIX MILES WEST OF SASKATOON, SK ON HWY #14

### CASH OR CHEQUE...

50% sale day and a post dated cheque for the balance dated May 1, 2019.

### SIGHT UNSEEN PURCHASES...

We guarantee satisfaction on sight unseen purchases. Call the consignors for more info or your purchase needs.

### INSURANCE...

We strongly urge you to insure your bulls if you are sending them back to the farm. An insurance representative will be present sale day or you may call Larry Toner - Stockmens 306-834-7652

### BOARDING...

You can send your purchase back to the farm and pick them up at your convenience by May 1, 2019 or have them delivered. Please call to make your arrangements.

### DELIVERY...

Free delivery or receive \$100.00 discount per purchaser, for taking your bull home sale day!

### BUYER INCENTIVE PROGRAMS...

#### Volume Discount:

\* 2 Bulls purchased 2% Discount

\* 3 or more Bulls purchased 3% Discount

View the catalogue and videos online at  
[www.BuyAgro.com](http://www.BuyAgro.com)

Please bring this catalogue with you sale day.



## WARD'S RED ANGUS

Clarke & Denise Ward

G.S. 707 RR #7 Box 39  
Saskatoon, SK S7K 1N2

P: 306.931.3824 C: 306.220.6372

[www.wardsredangus.com](http://www.wardsredangus.com)

**2 MARCH**  
2 PM 2019  
SASKATOON  
LIVESTOCK SALES

**50 + BULLS SELL  
SUPER LONG YEARLINGS  
TOP CUT YEARLINGS**

### AUCTIONEER...

Chris Poley T Bar C Cattle Co. Ltd. 306.220.5006

### SALE STAFF...

#### Ringmen

Shane Michelson T Bar C Cattle Co. Ltd. 403.363.9973

Ben Wright T Bar C Cattle Co. Ltd. 519.374.3335

### SALE CONSULTANTS...

Alvin Busby P: 306.493.2464 C: 306.221.0905  
W: 306.382.8088

Ryan Hurlbert P: 306.292.9812

Devin Warrilow, Castlerock Marketing P: 780.581.4329

### CAA BREED REPRESENTATIVE...

Bob Toner P: 306.716.5272

### SALE DAY PHONES...

306.382.8088 (SLS)

306.220.6372 (Clarke's Cell)

306.220.6972 (Josh's Cell)

306.220.7092 (Cole's Cell)

### SALE MANAGEMENT...

**PLEASE JOIN US FOR LUNCH  
AT 12:00 NOON**



Box 2330

Warman, SK S0K 450

Chris Poley 306-220-5006

Shane Michelson 403-363-9973

Ben Wright 519-374-3335

# WELCOME...

On behalf of everyone at Ward's Red Angus we would like to extend an invitation to our 11th Annual Bull Sale! Like many of you we experienced, dry conditions that challenged both us and our cattle. It is years like these that make us appreciate our strong Angus cow herd! Due to dry conditions we weaned our calves three weeks ahead of normal, while still maintaining solid weaning weights. This attests to the strength and production capabilities of the different cow families in our herd. You will find many of the dams have year in and year out put solid bulls into fellow producer's pastures and many females into our replacement pen.

This year's bull offering combines sons from tried and true herd bulls and new, young herd sires, with a splash of high-end AI genetics as well. The variety of red to black and yearling to fall born bulls on offer gives you, the buyer, the opportunity to fit the sire to your needs.

We would like to take the opportunity to thank everyone that has shown interest and supported us in 2018! Whether you attended our Semi-Annual Summer Tour & BBQ, stopped by the Yards at Agribition or just popped in for coffee, we appreciate spending time with all of you.

With the fast pace of today's cattle industry, we encourage you to come ahead to view the bulls either at home in their pens or the two days prior to the sale at SLS. If this is not possible, we are pleased to offer the option of using sight unseen buyer assistance. Please feel free to contact the sales staff at T Bar C or anyone at Ward's Red Angus for any help you may need.

The best option is to join us for lunch prior to the sale, sale starts at 2:00 pm. If you are unable to attend sale day please feel free to watch and bid live with DLMS.

Watch our website for updated information and videos!

See you sale day!  
Ward's Red Angus  
Clarke & Denise  
Josh, Kari, Carter & Olivia  
Cole & Kathryn



Clarke & Denise



Josh, Kari, Carter & Olivia



Cole & Kathryn



## FROM THE DESK AT T BAR...

Welcome to the 11th Edition of Ward's Red Angus Annual Sale on Saturday, March 2 at Saskatoon Livestock Sales located west of Saskatoon on Highway 14.

The Ward program is unique as birth weight and calving ease, coupled with longevity, has been bred into the program. If Clarke has a complaint, it's that his bulls last too long for their new owners. The bulls are grown and developed using a high roughage diet insuring soundness and fertility. The fall bulls are grass raised through the summer and put on feed in the early fall.

This unique group of bulls are headlined by the Ward's Agribition display bulls that caused attention in the commercial alley; included is a Black/Red carrier, an outcross genetically to most breeding programs and will make his mark in the years ahead.

The fall bred bulls are always a popular feature. These bulls are more mature, can cover bigger cows and more cows than their yearling counterparts. Whether you are looking for a red or black bull, the offering is diverse and suitable for all types of programs and all types of budgets.

Plan to be with us the first Saturday in March...it will be worth the trip to town. Feel free to stop by the ranch any time prior the sale, tour the bulls and see their mothers or give Clarke a call as he would love to assist you with your breeding needs. Come early, view the bulls and be guests for a complimentary luncheon.

If we, at T Bar C, may be of any assistance prior to or sale day, feel free to contact any of the T Bar team for professional and confidential assistance.

Chris Poley



Chris Poley • 306.220.5006



Shane Michelson • 403.363.9973



Ben Wright • 519.374.3335

# REF.

## Red LWNBRG **FUSION** 69D

TED 69D 1901106 Jan. 24/16

RED ANDRAS IN FOCUS B175  
RED ANDRAS FUSION R236 1831533  
RED ANDRAS BELLE B167

RED GMRA PEACEMAKER 1216  
RED LWNBRG PEACEMAKER 70B 1786251  
RED TED RED SPREAD 174R

EPD	BW	WW	YW	MM	TM	CE	MCE
	1.2	35	73	24	42	6.0	5.0

New Outcross Genetics here! This is our first calf crop out of this exciting young sire. He was purchased in 2017 from Leeuwenburgh Angus. His Peacemaker dam (70B) is one of their favorite young cows and Red Andras Fusion R236 has been a go to calving ease sire in their herd. As a group, the Fusion sons were consistent, stout, deep and easy fleshing. He combines calving ease with a little more frame. He has been doing double duty here, breeding both in spring and fall!



**RED LWNBRG FUSION 69D**

# REF.

## Red SVR **HITCH** 23D

SVR 23D 1934338 Mar. 10/16

RED CLAY BANDIT 18X  
RED SVR HITCH 63B 1815402  
RED SVR CHRISTINA 12Y

RED T-K BAILOUT 1Z  
RED SVR MISS LARK 88B 1816221  
SVR MISS LARK 249X (RC)

EPD	BW	WW	YW	MM	TM	CE	MCE
	4.1	54	87	19	46	-5.0	1.0

New Genetics! Denise had taken a picture of this bull at Agribition, when we went for a tour of South View Ranch the next spring, he was easy to pick out! You can't help but admire his natural thickness and muscle pattern! He turned many heads this summer at our Customer BBQ and from sales management teams going through our herd. We used him heavily and his calves have his same muscle pattern and easy doing ability. His prodigy tend to track the cow side so please check their calving ease ratings! If you want muscle and thickness, check out these sons!



**RED SVR HITCH 23D**

# REF.

## Red Cockburn **ASSASSIN** 624D

CWJ 624D 1942328 Feb. 15/16

RED LSF SAGA 1040Y  
RED PIE SPECIALIST 430 1875330  
RED PIE PLAYMATE 23Z

RED LAZY MC HUSTLE 18T  
RED COCKBURN CORA 254Z 1881579  
RED WILBAR CORA 443P

EPD	BW	WW	YW	MM	TM	CE	MCE
	0.9	36	73	23	41	5.0	5.0

This sire has everything we are looking for in a calving ease bull! Style, muscle, thickness and length of body. He sold for \$77,000 in 2017 to Brylor Ranch. We were fortunate to obtain a semen package. The calves he has left us, male or female, have easily risen to the top of the pen! He was used heavily in our AI program again this spring!



**RED COCKBURN ASSASSIN 624D**

WARD'S RED ANGUS YEARLINGS...



**RED WARD'S PR ASSASSIN 2F**

**2F**

**Red Ward's PR ASSASSIN 2F**

DRAW 2F 2062129 Jan. 22/18 CE:\*\*\*

RED LSF SAGA 1040Y  
 RED PIE SPECIALIST 430  
 RED PIE PLAYMATE 232  
**RED COCKBURN ASSASSIN 624D 1942328**  
 RED WILBAR CORA 443P  
 RED COCKBURN CORA 254Z  
 RED LAZY MC HUSTLE 18T  
 RED BAR-E-L RIBEYE 103R  
 RED WILBAR BIRDIE 526R  
 RED HOWE FINEST TRADITION 20W  
**RED WILBAR LANA 878Z 1696958**  
 WILBAR LANA 59U (RC)  
 LEACHMAN RIGHT TIME  
 RED HEAD LANA 278J

**BW:** 79 lbs. **WW:** 668 lbs.

EPD'S	BW	WW	YW	MM	TM	CE	MCE
	-0.4	29	55	18	33	8.0	38.0

- Long bodied, smooth made heifer bull
- Eye appealing and correct
- A maternal brother, 46D, sold to David Milliken, Craven, SK in our 2017 sale



**RED WARD'S FUSION 6F**

**6F**

**Red Ward's FUSION 6F**

DRAW 6F 2062164 Jan. 16/18 CE:\*

RED ANDRAS FUSION R236  
**RED LWNBRG FUSION 69D 1901106**  
 RED LWNBRG PEACEMAKER 70B  
 RED ANDRAS IN FOCUS B175  
 RED ANDRAS BELLE B167  
 RED GMRA PEACEMAKER 1216  
 RED TED RED SPREAD 174R  
 RED 5L NORSEMAN KING 2291  
 RED SSS NORSEMAN 412S  
**RED WARD'S COPPER 4Y 2062163**  
 RED OPEN AV COPPER 21R  
 RED SSS DUCHESS 606P  
 RED OPEN AV CUB PROSPECT 2N  
 RED OPEN A V COPPER DAY 321M

**BW:** 94 lbs. **WW:** 778 lbs.

EPD'S	BW	WW	YW	MM	TM	CE	MCE
	2.2	40	76	21	41	0.0	3.0

- Deep bodied, dark red with above average testicle and frame
- Powerful Fusion son, his mother is where the added power comes from
- He will add pounds to your calves



**RED WARD'S HITCH 7F**

**7F**

**Red Ward's HITCH 7F**

DRAW 7F 2062134 Jan. 19/18 CE:\*\*

RED SVR HITCH 63B  
**RED SVR HITCH 23D 1934338**  
 RED SVR MISS LARK 88B  
 RED CLAY BANDIT 18X  
 RED SVR CHRISTINA 12Y  
 RED T-K BAILOUT 1Z  
 SVR MISS LARK 249X (RC)  
 RED U-2 ICON 223M  
 RED LETTER CONVICT 35S  
**RED WARD'S FREYJA 39U 1476144**  
 RED WARD'S FREYJA 56N  
 RED LETTER BLACKBIRD 16H  
 RED HANDFORD DYNAMITE 136L  
 RED WARD'S FREYJA 49J

**BW:** 83 lbs. **WW:** 654 lbs.

EPD'S	BW	WW	YW	MM	TM	CE	MCE
	1.4	30	49	17	32	3.0	6.0

- Well balanced, thick bull with good testicles, can cover your cows and be used on larger heifers
- 39U was a very productive cow, other sons selling to Elliott Lindgen, Calgary AB, McFarlane Acres Ltd., Harris, SK and a bull we partnered with Murray and Judy Foster, Red Ward's Thunderstruck 20C, that we have used successfully
- Note: his dam, 39U, died when he was 60 days old



**RED WARD'S FREYJA 39U  
 DAM OF LOT 7F**

# 13F

## Red Ward's ASSASSIN 13F

DRAW 13F 2062089 Jan. 20/18 CE:\*\*\*

RED PIE SPECIALIST 430

RED COCKBURN ASSASSIN 624D 1942328  
RED COCKBURN CORA 254Z

RED HXC BRUTE FORCE 6600S

RED WARD'S LADY 7B 1932315  
RED WARD'S LADY 54Z

RED LSF SAGA 1040Y  
RED PIE PLAYMATE 232  
RED LAZY MC HUSTLE 18T  
RED WILBAR CORA 443P  
RED BECKTON JULIAN GG B571  
RED HXC 400P  
RED NCJ MYSTIFIED 16X  
RED WARD'S LADY 46P

BW: 79 lbs.

WW: 604 lbs.

EPD'S	BW	WW	YW	MM	TM	CE	MCE
	-0.1	26	50	20	33	6.0	4.0

- A top notch Assassin bull, with a productive young cow, 7B
- Different pedigree, one of our only Brute Force cows combined with Mystified
- Calving ease combined with natural do ability here



RED WARD'S ASSASSIN 13F

WARD'S RED ANGUS YEARLINGS...

# HITMAN 14F



FEATURE BULL

# 14F

## Red Ward's HITMAN 14F

DRAW 14F 2062091 Jan. 20/18 CE:\*\*\*

RED PIE SPECIALIST 430

RED COCKBURN ASSASSIN 624D 1942328  
RED COCKBURN CORA 254Z

RED PASQUIA LANCER 38X

RED WARD'S KMR BLACKBIRD 26Z 1706704  
RED WARD'S BLACKBIRD 48X

RED LSF SAGA 1040Y  
RED PIE PLAYMATE 232  
RED LAZY MC HUSTLE 18T  
RED WILBAR CORA 443P  
RED LCB LANCER 1202S  
RED PASQUIA ROSE 29P  
RED HOWE BOLD FUTURE 86T  
RED LETTER BLACKBIRD 76N

BW: 81 lbs.

WW: 738 lbs.

EPD'S	BW	WW	YW	MM	TM	CE	MCE
	0.7	39	68	20	40	4.0	5.0

- 14F made the trip to Agribition with us! His dark hair coat, thickness, wide hip and temperament made him an easy choice to take
- 26Z is a no miss female out of the Blackbird line! Other sons selling to Lorraine Metz and Trevor McKenzie. We have a daughter retained in herd and sold another to L-Dee Stock Farm
- 14F has been a standout since birth, moderate enough to use on heifers and thick enough to work on your cows



RED WARD'S BLACKBIRD 48X  
GRAND DAM OF LOT 14F

WARD'S RED ANGUS YEARLINGS...



**RED WARD'S THUNDER 24F**

**24F**

**Red Ward's THUNDER 24F**

DRAW 24F 2062094 Jan. 26/18 CE:\*\*

RED CROWFOOT MOONSHINE 8081U  
 RED WARD'S THUNDERSTRUCK 20C 1884261  
 RED WARD'S FREYJA 39U  
 RED JYL SIGNATURE 49B  
 RED WARD'S LADY 31D 1994929  
 RED WARD'S LADY 6U

CROWFOOT 6004S (E<sub>9</sub>)  
 RED CROWFOOT BRNDINA 6359S  
 RED LETTER CONVICT 35S  
 RED WARD'S FREYJA 56N  
 RED CHOPPER K OZZI 109T  
 RED RIVERDALE COUNTESS 485M  
 RED FLYING K PATRICK 202R  
 RED WARD'S LADY 46P

BW: 83 lbs. WW: 562 lbs.

EPD'S	BW	WW	YW	MM	TM	CE	MCE
	2.1	31	51	11	27	2.0	7.0

- Dark red, long bodied, good footed bull
- 31D is a Signature daughter that did a great job on her first calf



**RED WARD'S PR FUSION 28F**

**28F**

**Red Ward's PR FUSION 28F**

DRAW 28F 2062098 Feb. 03/18 CE:\*\*

RED ANDRAS FUSION R236  
 RED LWNBRG FUSION 69D 1901106  
 RED LWNBRG PEACEMAKER 70B  
 RED HOWE FINEST TRADITION 20W  
 RED WILBAR GOLDIE 859Z 1711599  
 RED WILBAR GOLDIE 230W

RED ANDRAS IN FOCUS B175  
 RED ANDRAS BELLE B167  
 RED GMRA PEACEMAKER 1216  
 RED TED RED SPREAD 174R  
 RED BAR-E-L RIBEYE 103R  
 RED WILBAR BIRDIE 526R  
 WILBAR ADVANTAGE 580R (R<sub>C</sub>)  
 RED YY GOLDIE 504R

BW: 86 lbs. WW: 610 lbs.

EPD'S	BW	WW	YW	MM	TM	CE	MCE
	0.9	26	52	18	31	7.0	7.0

- Finer boned bull with good depth of body
- Solid Fusion son off a hard working Wilbar cow



**RED WARD'S FUSE 33F**

**33F**

**Red Ward's FUSE 33F**

DRAW 33F 2062103 Feb. 07/18 CE:\*\*

RED ANDRAS FUSION R236  
 RED LWNBRG FUSION 69D 1901106  
 RED LWNBRG PEACEMAKER 70B  
 RED LETTER ICON 1R  
 RED PASQUIA GOLDIE 52U 1460737  
 RED PASQUIA GOLDIE 26J

RED ANDRAS IN FOCUS B175  
 RED ANDRAS BELLE B167  
 RED GMRA PEACEMAKER 1216  
 RED TED RED SPREAD 174R  
 RED U-2 ICON 223M  
 RED LETTER LASSIE 75D  
 RED GET-A-LONG ARAB 159  
 RED PASQUIA GOLDIE 23G

BW: 84 lbs. WW: 606 lbs.

EPD'S	BW	WW	YW	MM	TM	CE	MCE
	1.1	30	64	19	34	7.0	7.0

- Dark red, deep made, free moving bull
- Off a cow we purchased out of Alvin Ginter's dispersal
- Use him on cows or a group of large exotic heifers



**RED PASQUIA GOLDIE 52U  
 DAM OF LOT 33F**



# 34F

## Red Ward's **HITCHER** 34F

DRAW 34F 2062107 Feb. 08/18 CE:\*\*

RED SVR HITCH 63B  
**RED SVR HITCH 23D 1934338**  
RED SVR MISS LARK 88B

RED CLAY BANDIT 18X  
RED SVR CHRISTINA 12Y  
RED T-K BAILOUT 1Z  
SVR MISS LARK 249X (RC)  
RED U-2 ICON 223M  
RED LETTER LASSIE 75D  
RED GEIS ZAMA PINE 190'97  
RED PASQUIA FAYET 6C

RED LETTER ICON 1R  
**RED PASQUIA FAYET 70U 1460749**  
RED PASQUIA FAYET 22L

**BW:** 82 lbs. **WW:** 574 lbs.

EPD'S	BW	WW	YW	MM	TM	CE	MCE
	1.4	32	56	11	27	1.0	5.0

- 70U is another solid producing cow out of the Pasquia dispersal
- Medium colored bull that is well balanced and square made



**RED WARD'S HITCHER 34F**



**RED PASQUIA FAYET 70U**  
DAM OF LOT 34F

# 36F

## Red Ward's **HITCH** 36F

DRAW 36F 2062105 Feb. 07/18 TWIN CE:\*\*\*

RED SVR HITCH 63B  
**RED SVR HITCH 23D 1934338**  
RED SVR MISS LARK 88B

RED CLAY BANDIT 18X  
RED SVR CHRISTINA 12Y  
RED T-K BAILOUT 1Z  
SVR MISS LARK 249X (RC)  
RED BLAZE V415  
RED U-2 ANEXA 5F  
RED WARD'S HOBO 2K  
RED LETTER LASSIE 8B

RED U-2 ICON 223M  
**RED WARD'S LASSIE 4U 1454313**  
RED WARD'S LASSIE 9M

**BW:** 78 lbs. **WW:** 538 lbs.

EPD'S	BW	WW	YW	MM	TM	CE	MCE
	1.3	33	56	16	32	3.5	7.0

- 4U has had sale features in the past and many daughters going into other herds
- 36F is a twin, with Hobo and Icon on his dam side, if you're thinking of retaining females he would fit the bill



**RED WARD'S LASSIE 4U**  
DAM OF LOT 36F

# 37F

## Red Ward's **FUSED** 37F

DRAW 37F 2062111 Feb. 08/18 CE:\*\*

RED ANDRAS FUSION R236  
**RED LWNBRG FUSION 69D 1901106**  
RED LWNBRG PEACEMAKER 70B

RED ANDRAS IN FOCUS B175  
RED ANDRAS BELLE B167  
RED GMRA PEACEMAKER 1216  
RED TED RED SPREAD 174R  
RED FLYING K DYNAMO 6Y  
RED FLYING K MS PRIDE 1J  
RED SILVEIRAS REDFORD  
RED LETTER LADYBIRD 24L

RED FLYING K DYNAMITE 30L  
**RED LETTER BLACKBIRD 54P 1312223**  
RED LETTER BLACKBIRD 8E

**BW:** 83 lbs. **WW:** 604 lbs.

EPD'S	BW	WW	YW	MM	TM	CE	MCE
	0.4	25	48	19	32	5.0	6.0

- Rugged made bull for your pasture with lots of testicle
- Two half brothers sold to Murray and Judy Foster, Birch Hills, another brother to PFRA and Rob Thorpe, Vanscoy



**RED WARD'S FUSED 37F**

**WARD'S RED ANGUS YEARLINGS...**



**RED WARD'S C FUSION 49F**

**49F**

**Red Ward's C FUSION 49F**

COLW 49F 2062171 Feb. 19/18 CE:\*\*\*

RED ANDRAS FUSION R236  
**RED LWNBRG FUSION 69D 1901106**  
 RED LWNBRG PEACEMAKER 70B

RED ANDRAS IN FOCUS B175  
 RED ANDRAS BELLE B167  
 RED GMRA PEACEMAKER 1216  
 RED TED RED SPREAD 174R  
 HOWE MAVERICK 6W (RC)  
 RED HOWE MS ENVIOUS 34W  
 RED WARD'S CHIEF 59N  
 CCL ERICA 2'00

RED HOWE TWENTY X 28Y  
**RED WARD'S C ERICA 51C 1929882**  
 C WARD'S ERICA 321S (RC)

**BW:** 74 lbs.      **WW:** 502 lbs.

EPD'S	BW	WW	YW	MM	TM	CE	MCE
	0.1	22	47	19	30	8.0	8.0

- Smooth made, calving ease specialist
- Dark, moderate, well balanced bull
- A red bull out of Cole's Erica cow line! Cow producer here



**RED WARD'S HITCHINGS 51F**

**51F**

**Red Ward's HITCHINGS 51F**

DRAW 51F 2062122 Mar. 08/18 CE:\*

RED SVR HITCH 63B  
**RED SVR HITCH 23D 1934338**  
 RED SVR MISS LARK 88B

RED CLAY BANDIT 18X  
 RED SVR CHRISTINA 12Y  
 RED T-K BAILOUT 1Z  
 SVR MISS LARK 249X (RC)  
 HOWE MAVERICK 6W (RC)  
 RED HOWE MS ENVIOUS 34W  
 RED LETTER KABOOM 50N  
 RED WARD'S BLACKBIRD 40M

RED HOWE TWENTY X 28Y  
**RED WARD'S BLACKBIRD 42A 1929939**  
 RED WARD'S BLACKBIRD 71S

**BW:** 89 lbs.      **WW:** 662 lbs.

EPD'S	BW	WW	YW	MM	TM	CE	MCE
	3.2	48	78	19	43	-2.0	3.0

- Deep, thick, long bodied bull with a good foot under him
- Recommended for cows
- Half brothers have sold to Rodney Senik, Biggar



**RED WARD'S FUSION 52F**

**52F**

**Red Ward's FUSION 52F**

DRAW 52F 2062127 Feb. 28/18 CE:\*\*\*

RED ANDRAS FUSION R236  
**RED LWNBRG FUSION 69D 1901106**  
 RED LWNBRG PEACEMAKER 70B

RED ANDRAS IN FOCUS B175  
 RED ANDRAS BELLE B167  
 RED GMRA PEACEMAKER 1216  
 RED TED RED SPREAD 174R  
 RED LCB LANCER 1202S  
 RED PASQUIA ROSE 29P  
 RED NCJ MYSTIFIED 16X  
 RED WARD'S SWEETY 27W

RED PASQUIA LANCER 38X  
**RED WARD'S SWEETY 23B 1929931**  
 RED WARD'S SWEETY 37Z

**BW:** 78 lbs.      **WW:** 542 lbs.

EPD'S	BW	WW	YW	MM	TM	CE	MCE
	0.3	26	50	19	32	6.0	6.0

- Bet the farm calving ease here
- His dam, 23B, is a productive young cow with a daughter going to Double V Stock Farm and a son last year to Gregory Eppich

# 53F

## Red Ward's **HITCHED** 53F

DRAW 53F 2062126 Mar. 02/18 CE:\*

RED SVR HITCH 63B  
**RED SVR HITCH 23D 1934338**  
RED SVR MISS LARK 88B

RED FLYING K PATRICK 202R  
**RED WARD'S LYDIAN 67W 1515356**  
RED WARD'S LYDIAN 117P

**BW:** 90 lbs. **WW:** 590 lbs.

RED CLAY BANDIT 18X  
RED SVR CHRISTINA 12Y  
RED T-K BAILOUT 1Z  
SVR MISS LARK 249X (RC)  
RED PATRIOT 629  
RED FLYING K MS DYNAMO 156N  
RED U-2 ICON 223M  
RED LETTER LYDIAN 11B

EPD'S	BW	WW	YW	MM	TM	CE	MCE
	2.4	34	58	16	33	0.0	4.0

- Dark, good footed bull with excellent hair coat
- His dam, 67W, had a high seller to Topham Red Angus in 2012, another son to Brian and Amber Bates and has three daughters retained in herd



**RED WARD'S HITCHED 53F**

# 55F

## Red Ward's **HITCHED** 55F

DRAW 55F 2062133 Feb. 25/18 CE:\*\*

RED SVR HITCH 63B  
**RED SVR HITCH 23D 1934338**  
RED SVR MISS LARK 88B

RED HOWE TWENTY X 28Y  
**RED WARD'S JJ COPPER 514C 1952511**  
RED PASQUIA COPPER 51W

**BW:** 88 lbs. **WW:** 656 lbs.

RED CLAY BANDIT 18X  
RED SVR CHRISTINA 12Y  
RED T-K BAILOUT 1Z  
SVR MISS LARK 249X (RC)  
HOWE MAVERICK 6W (RC)  
RED HOWE MS ENVIOUS 34W  
RED LETTER ICON 1R  
RED PASQUIA COPPER 2S

EPD'S	BW	WW	YW	MM	TM	CE	MCE
	4.5	54	91	20	47	-5.0	2.0

- Solid Hitch son in the pen
- Long bodied, larger frame, stout bull
- Will work on larger heifers or cows



**RED WARD'S HITCHED 55F**

# 56F

## Red Ward's **HITCH** 56F

DRAW 56F 2062116 Feb. 26/18 CE:\*

RED SVR HITCH 63B  
**RED SVR HITCH 23D 1934338**  
RED SVR MISS LARK 88B

RED NCJ MYSTIFIED 16X  
**RED WARD'S COUNTESS 49Z 1827719**  
RED LETTER COUNTESS 47U

**BW:** 91 lbs. **WW:** 580 lbs.

RED CLAY BANDIT 18X  
RED SVR CHRISTINA 12Y  
RED T-K BAILOUT 1Z  
SVR MISS LARK 249X (RC)  
RED LAZY MC DIVIDE 8J  
RED LAZY MC MISS 1U  
RED GOLD-BAR STATUE KN 126S  
RED LETTER COUNTESS 8M

EPD'S	BW	WW	YW	MM	TM	CE	MCE
	3.1	35	54	17	35	-3.0	1.0

- Thick bull with large testicles for your cows
- 49Z is a solid Mystified cow, with other sons selling to Jack Morris, Delisle, Smith Northern Ranching, Duck Lake and McFarlane Acres, Harris
- Recommended for cows



**RED WARD'S HITCH 56F**

**WARD'S RED ANGUS YEARLINGS....**

WARD'S RED ANGUS YEARLINGS...

# 62F

## Red Ward's FUSION 62F

DRAW 62F 2062125 Mar. 08/18 CE:\*\*



**RED WARD'S FUSION 62F**

RED ANDRAS FUSION R236  
**RED LWNBRG FUSION 69D 1901106**  
 RED LWNBRG PEACEMAKER 70B

RED ANDRAS IN FOCUS B175  
 RED ANDRAS BELLE B167  
 RED GMRA PEACEMAKER 1216  
 RED TED RED SPREAD 174R  
 RED FINE LINE MULBERRY 26P  
 RED HOWE VERNICE 3M  
 RED WARD'S HOBO 2K  
 RED LETTER BLACKBIRD 42H

RED HOWE BOLD FUTURE 86T  
**RED WARD'S BLACKBIRD 48X 1590443**  
 RED LETTER BLACKBIRD 76N

**BW: 83 lbs.      WW: 626 lbs.**

EPD'S	BW	WW	YW	MM	TM	CE	MCE
	1.0	36	66	23	41	5.0	5.0

- Long bodied, growthy, eye appealing, do all bull
- 48X is a stand out cow, two of her daughters have sons in the sale, Lots 66F and 14F (our Agribition bulls)
- Other sons selling to Dave and Leanne McKenzie, Delisle, Jarrett Rolston, Delisle and we retained her bull calf, Red Ward's Last Roll 96E, last year



**RED WARD'S BLACKBIRD 48X  
 DAM OF LOT 62F**

# 63F

## Red Ward's FUSION 63F

DRAW 63F 2062113 Feb. 13/18 CE:\*\*\*



**RED WARD'S FUSION 63F**

RED ANDRAS FUSION R236  
**RED LWNBRG FUSION 69D 1901106**  
 RED LWNBRG PEACEMAKER 70B

RED ANDRAS IN FOCUS B175  
 RED ANDRAS BELLE B167  
 RED GMRA PEACEMAKER 1216  
 RED TED RED SPREAD 174R  
 RED LODI PRINCE 2632  
 RED TOPHAM MS MARSLITE 55X  
 RED HOWE BOLD FUTURE 86T  
 RED LETTER LASSIE 31W

RED TOPHAM PRINCE 233Z  
**RED WARD'S LASSIE 14C 1954031**  
 RED WARD'S LASSIE 161Z

**BW: 74 lbs.      WW: 546 lbs.**

EPD'S	BW	WW	YW	MM	TM	CE	MCE
	0.1	28	58	22	36	7.0	6.0

- Long bodied, fine boned, heifer bull here
- One of our only Topham Prince females, her son last year went to Allan McKenzie, Zealandia.

**ON BEHALF OF THE WARD AND THE SECK FAMILY MEMBERS, WE WOULD LIKE TO THANK EVERYONE WHO DONATED IN 2018!**  
 As a thank you to Cole for donating his heifer last year and raising a total of \$26,260 for Jarrett's treatments, the Seck Family hosted Ward's Red Angus and Crew at a Rider's game. It was a fantastic day spent with the Seck Family. We had the opportunity to visit with Jarrett this past summer at the Wascana Centre in Regina where he is continuing treatments. Jarrett is always in our thoughts and we wish him well as he continues his battle with Crips.



**WARD'S C EVA 30E**



# HITCHHIKER 66F



FEATURE BULL

WARD'S RED ANGUS YEARLINGS...

**66F**

Red Ward's JW **HITCHHIKER** 66F  
DRAW 66F 2062132 Mar. 22/18 CE:\*\*

**78F**

Red Ward's **FUSION** 78F  
DRAW 78F 2062124 Mar. 19/18 CE:\*\*\*

RED SVR HITCH 63B  
**RED SVR HITCH 23D 1934338**  
RED SVR MISS LARK 88B

RED CLAY BANDIT 18X  
RED SVR CHRISTINA 12Y  
RED T-K BAILOUT 1Z  
SVR MISS LARK 249X (RC)  
HOWE MAVERICK 6W (RC)  
RED HOWE MS ENVIOUS 34W  
RED HOWE BOLD FUTURE 86T  
RED LETTER BLACKBIRD 76N

RED HOWE TWENTY X 28Y  
**RED WARD'S BLACKBIRD 60A 1929940**  
RED WARD'S BLACKBIRD 48X

**BW:** 82 lbs. **WW:** 688 lbs.

EPD'S	BW	WW	YW	MM	TM	CE	MCE
	1.9	60	95	21	51	1.0	5.0

- This late March bull is easily competing with his older pen mates
- Above average scrotal and growth combined with his lower birth weight puts this bull in the top percentages of the pen
- His dam, 60A, combines the best of both the Howe's sires we have used

RED ANDRAS FUSION R236  
**RED LWNBRG FUSION 69D 1901106**  
RED LWNBRG PEACEMAKER 70B

RED ANDRAS IN FOCUS B175  
RED ANDRAS BELLE B167  
RED GMRA PEACEMAKER 1216  
RED TED RED SPREAD 174R  
RED BIEBER ROLLIN DEEP Y118  
RED TR COUNTESS 731X  
RED HOWE TWENTY X 28Y  
RED LETTER BLACKBIRD 62J

RED TR ROLLIN ALONG 79B  
**RED WARD'S BLACKBIRD 39D 1994931**  
RED WARD'S BLACKBIRD 2B

**BW:** 69 lbs. **WW:** 530 lbs.

EPD'S	BW	WW	YW	MM	TM	CE	MCE
	-0.2	35	64	22	40	8.0	7.0

- Good footed, solid heifer bull with some eye appeal
- Bet the farm calving ease



**2018 SUMMER TOUR**



**RED WARD'S FUSION 78F**



**RED WARD'S HITCH 80F**

**80F**

**Red Ward's HITCH 80F**

DRAW 80F 2062162 Mar. 22/18 CE:\*\*

RED SVR HITCH 63B  
**RED SVR HITCH 23D 1934338**  
 RED SVR MISS LARK 88B

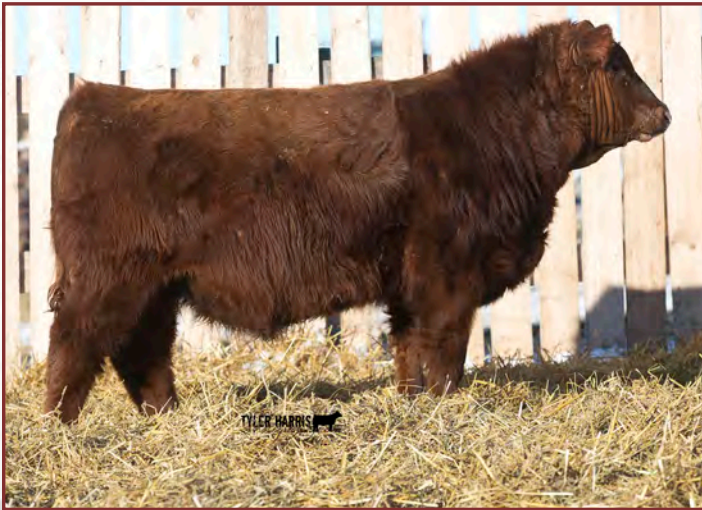
RED PASQUIA LANCER 38X  
**RED WARD'S C ERICA 62Z 1929883**  
 C.WARD'S ERICA 43W (RC)

**BW: 88 lbs. WW: 580 lbs.**

EPD'S	BW	WW	YW	MM	TM	CE	MCE
	2.8	45	72	16	39	-2.0	4.0

- Medium in color, solid Hitch bull
- 62Z has a daughter retained in herd and sons sold to Carl Hanson, Birch Hills and Dylan and Samantha Herring, Harris

RED CLAY BANDIT 18X  
 RED SVR CHRISTINA 12Y  
 RED T-K BAILOUT 1Z  
 SVR MISS LARK 249X (RC)  
 RED LCB LANCER 1202S  
 RED PASQUIA ROSE 29P  
 RED FLYING K PATRICK 202R  
 C.WARD'S ERICA 97N (RC)



**RED WARD'S PR HITCH 84F**

**84F**

**Red Ward's PR HITCH 84F**

DRAW 84F 2062131 Mar. 30/18 CE:\*\*

RED SVR HITCH 63B  
**RED SVR HITCH 23D 1934338**  
 RED SVR MISS LARK 88B

RED HOWE BOLD FUTURE 86T  
**RED WARD'S FREYJA 141Y 1827727**  
 RED WARD'S FREYJA 24M

**BW: 82 lbs. WW: 576 lbs.**

EPD'S	BW	WW	YW	MM	TM	CE	MCE
	1.7	45	73	19	42	2.0	5.0

- Moderate, dark, well balanced, young bull
- His dam, 141Y, had a son go to Bill Braun, Aberdeen, SK

RED CLAY BANDIT 18X  
 RED SVR CHRISTINA 12Y  
 RED T-K BAILOUT 1Z  
 SVR MISS LARK 249X (RC)  
 RED FINE LINE MULBERRY 26P  
 RED HOWE VERNICE 3M  
 RED CARRUTHERS KING ROB 39J  
 RED WARD'S FREYJA 49J

**EPD INFO - WHAT DOES IT ALL MEAN?**

At Ward's Red Angus we have always encouraged the use of the actual numbers that we provide to you for your bull selection. Meaning the Actual Birth Weight, Weaning Weights and Yearling Weights, along with our Calving Ease Rating. The EPDs were then a tool for you to use as a guide to help you with your purchase decisions.

This year, if you follow EPDs, you are going to notice that the Red Angus Bull's numbers seem "OFF". They are! The Canadian Angus Association has implemented a program called "Angus One." These NEW numbers are now being calculated with the American Angus Association. This means the American Black Angus Cattle and Canadian Angus Cattle, both Red and Black, now make up these new numbers.

Below is a paragraph from the Canadian Angus Association in regards to the changes for Red Angus breeders: "Canadian Red Angus members will notice this change to their cattle EPDs. These new EPDs are not comparable to your previous EPDs. So please don't think of it as your EPDs changing. This is a completely new set of numbers, now directly comparable and on the same base as EPDs for Black Angus animals (both in Canada and the U.S.). This change will take time to adjust to in that your acceptable ranges for EPDs for your program and your environment will need to be reassessed."

We have decided to publish the catalogue with the NEW EPD numbers, but this year, more than ever, we strongly encourage you to use the **Actual** numbers we are providing to you and our Calving Ease Rating recommendations! We know our cow herd better than any predicted numbers and would be happy to answer any questions you may have with your bull purchases!

# REF.

## Red JLL SIGNATURE 49B

JLL 49B 1778103 Jan. 17/14

RED TER-RON MAMBO 28K

RED CHOPPER K OZZI 109T 1410751

RED CHOPPER K SCAARA 216M

RED CRESCENT CREEK H0904 52K

RED RIVERDALE COUNTESS 485M 1104486

RED RIVERDALE BRANDY 224J

EPD	BW	WW	YW	MM	TM	CE	MCE
	2.2	37	57	12	31	4.0	12.0

"Consistency" sums up this bull! His calves are well put together with loads of power, growth, muscle, thickness and hair. They are an even bunch of bulls, look for them to do the same in your herd! Having used 49B so heavily in both our winter and fall calving programs, we decided to sell a half interest and half possession in him to South View Ranch at Ceylon, SK.



RED JLL SIGNATURE 49B

# 700E

## Red Ward's SIGNATURE 700E

DRAW 700E 2067549 Aug. 25/17 CE:\*\*

RED CHOPPER K OZZI 109T

RED JLL SIGNATURE 49B 1778103

RED RIVERDALE COUNTESS 485M

RED FLYING K PATRICK 202R

RED LETTER THELMA 133W 1534317

RED LETTER THELMA 46M

BW: 84 lbs.

WW: 796 lbs.

EPD'S	BW	WW	YW	MM	TM	CE	MCE
	0.7	41	63	16	37	6.0	9.0

- Well balanced bull
- Recommended for large heifers

RED TER-RON MAMBO 28K

RED CHOPPER K SCAARA 216M

RED CRESCENT CREEK H0904 52K

RED RIVERDALE BRANDY 224J

RED PATRIOT 629

RED FLYING K MS DYNAMO 156N

RED WARD'S HOBO 2K

RED LETTER THELMA 49K



RED WARD'S SIGNATURE 700E

# 703E

## Red Ward's JW SIGNATURE 703E

JOSH 703E 2062180 Aug. 04/17 CE:\*\*\*

RED CHOPPER K OZZI 109T

RED JLL SIGNATURE 49B 1778103

RED RIVERDALE COUNTESS 485M

RED WARD'S RAW DEAL 16Y

RED WARD'S J LASSIE 301A 1952564

RED LETTER LASSIE 1M

BW: 73 lbs.

WW: 678 lbs.

EPD'S	BW	WW	YW	MM	TM	CE	MCE

- Dark red, light boned, easy calving bull

RED TER-RON MAMBO 28K

RED CHOPPER K SCAARA 216M

RED CRESCENT CREEK H0904 52K

RED RIVERDALE BRANDY 224J

RED TER-RON REALDEAL 01W

RED WARD'S LYDIAN 67W

RED LETTER SUNSHINE 100T

RED LETTER LASSIE 23D



RED WARD'S JW SIGNATURE 703E

WARD'S RED ANGUS LONG YEARLINGS...

WARD'S RED ANGUS LONG YEARLINGS...



**RED WARD'S SIGNATURE 706E**

## 706E

**Red Ward's SIGNATURE 706E**  
DRAW 706E 2062168 Aug. 09/18 CE:\*\*

RED CHOPPER K OZZI 109T  
**RED JLL SIGNATURE 49B 1778103**  
RED RIVERDALE COUNTESS 485M

RED HOWE TWENTY X 28Y  
**RED WARD'S LADYBIRD 509C 1994826**  
RED LETTER LADYBIRD 304S

**BW:** 82 lbs. **WW:** 650 lbs.

EPD'S	BW	WW	YW	MM	TM	CE	MCE
	2.7	38	64	15	34	3.0	10.0

• Will work well on cows or heifers

RED TER-RON MAMBO 28K  
RED CHOPPER K SCAARA 216M  
RED CRESCENT CREEK H0904 52K  
RED RIVERDALE BRANDY 224J  
HOWE MAVERICK 6W (RC)  
RED HOWE MS ENVIOUS 34W  
WARD'S DATELINE 3P (RC)  
RED LETTER LADY BIRD 41P



**RED WARD'S SIGNATURE 709E**

## 709E

**Red Ward's SIGNATURE 709E**  
DRAW 709E 2062156 Aug. 07/17 CE:\*\*\*

RED CHOPPER K OZZI 109T  
**RED JLL SIGNATURE 49B 1778103**  
RED RIVERDALE COUNTESS 485M

RED FLYING K PATRICK 202R  
**RED WARD'S SHAWNEE 153Y 1929889**  
RED WARD'S SHAWNEE 22R

**BW:** 74 lbs. **WW:** 722 lbs.

EPD'S	BW	WW	YW	MM	TM	CE	MCE
	-1.0	32	49	12	28	8.0	10.0

• Free moving, large scrotalled, pasture ready bull  
• His dam, 153Y, has sold sons to Darrel Richmond, Delisle and the Willner Grazing Co-op

RED TER-RON MAMBO 28K  
RED CHOPPER K SCAARA 216M  
RED CRESCENT CREEK H0904 52K  
RED RIVERDALE BRANDY 224J  
RED PATRIOT 629  
RED FLYING K MS DYNAMO 156N  
RED FLYING K DYNAMITE 30L  
RED WARD'S SHAWNEE 73N



**RED WARD'S SIGNATURE 714E**

## 714E

**Red Ward's SIGNATURE 714E**  
DRAW 714E 2062169 Aug. 05/17 CE:\*\*\*

RED CHOPPER K OZZI 109T  
**RED JLL SIGNATURE 49B 1778103**  
RED RIVERDALE COUNTESS 485M

RED CARRUTHERS KING ROB 39J  
**RED WARD'S FREYJA 24M 1198249**  
RED WARD'S FREYJA 49J

**BW:** 78 lbs. **WW:** 564 lbs.

EPD'S	BW	WW	YW	MM	TM	CE	MCE
	0.5	16	29	12	20	7.0	10.0

• Moderate, stout bull with lots of eye appeal  
• His Freyja dam, 24M, has had sons sell to Ray Dueck, Beechy, Leonard Penner and many females retained in herd  
• This is her last calf as we had to ship the cow on age

RED TER-RON MAMBO 28K  
RED CHOPPER K SCAARA 216M  
RED CRESCENT CREEK H0904 52K  
RED RIVERDALE BRANDY 224J  
RED LMAN KING ROB 8621  
RED PRINCESS OF CO 19Y  
RED FLYING K IGNITOR 9G  
RED SASKAIRIE FREYJA 93P



# 715E

## Red Ward's PR **SIGNATURE** 715E

DRAW 715E 2062157 Aug. 06/17 CE:\*

RED CHOPPER K OZZI 109T  
**RED JLL SIGNATURE 49B 1778103**  
RED RIVERDALE COUNTESS 485M

RED FLYING K DYNAMO 67K  
**RED WARD'S GERTIE 11A 1891678**  
RED WRAZ GERTIE 81X

**BW:** 90 lbs.

**WW:** 674 lbs.

EPD'S	BW	WW	YW	MM	TM	CE	MCE
	3.3	32	52	14	30	0.0	6.0

- Power cow bull that is thick and dark
- Pasture ready

RED TER-RON MAMBO 28K  
RED CHOPPER K SCAARA 216M  
RED CRESCENT CREEK H0904 52K  
RED RIVERDALE BRANDY 224J  
RED FLYING K DYNAMO 22F  
RED FLYING K BARONNESS 72G  
RED K ADAMS TYCOON 2T  
RED PASQUIA GERTIE 61T



**RED WARD'S PR SIGNATURE 715E**

# SIGNATURE 716E



TYLER HARRIS

FEATURE BULL

WARD'S RED ANGUS LONG YEARLINGS...

# 716E

## Red Ward's **SIGNATURE** 716E

DRAW 716E 2062158 Aug. 13/17 CE:\*\*

RED CHOPPER K OZZI 109T  
**RED JLL SIGNATURE 49B 1778103**  
RED RIVERDALE COUNTESS 485M

RED C. WARD'S SURE SHOT 17Y  
**RED WARD'S LYDIAN 6B 1929933**  
RED WARD'S LYDIAN 67W

**BW:** 77 lbs.

**WW:** 648 lbs.

EPD'S	BW	WW	YW	MM	TM	CE	MCE
	1.3	34	48	11	28	4.0	9.0

- Another solid, chunky, Signature son
- If you need consistency, these bulls will get it done

RED TER-RON MAMBO 28K  
RED CHOPPER K SCAARA 216M  
RED CRESCENT CREEK H0904 52K  
RED RIVERDALE BRANDY 224J  
RED TER-RON REALDEAL 01W  
C. WARD'S ERICA 97N (RC)  
RED FLYING K PATRICK 202R  
RED WARD'S LYDIAN 117P



**RED WARD'S LYDIAN 67W**  
GRAND DAM OF LOT 716E



**RED WARD'S SIG 717E**

# 717E

## Red Ward's **SIG** 717E

DRAW 717E 2062165 Aug. 07/17 CE:\*\*\*

RED CHOPPER K OZZI 109T  
**RED JYL SIGNATURE 49B 1778103**  
 RED RIVERDALE COUNTESS 485M

RED HOWE TWENTY X 28Y  
**RED WARD'S ELDORA 300A 1952514**  
 RED WARD'S ELDORA 14R

**BW:** 75 lbs. **WW:** 666 lbs.

EPD'S	BW	WW	YW	MM	TM	CE	MCE
	0.2	31	50	12	28	7.0	11.0

- Heifer bull that will cover a large volume of females
- 300A is a solid dam with a past bull selling to Triangle D Land & Cattle, Hanley

RED TER-RON MAMBO 28K  
 RED CHOPPER K SCAARA 216M  
 RED CRESCENT CREEK H0904 52K  
 RED RIVERDALE BRANDY 224J  
 HOWE MAVERICK 6W (RC)  
 RED HOWE MS ENVIOUS 34W  
 RED FLYING K DYNAMITE 30L  
 RED WARD'S ELDORA 57N



**RED WARD'S THUNDER 718E**

# 718E

## Red Ward's **THUNDER** 718E

DRAW 718E 2062167 Sept. 15/17 CE:\*\*\*

RED CROWFOOT MOONSHINE 8081U  
**RED WARD'S THUNDERSTRUCK 20C 1884261**  
 RED WARD'S FREYJA 39U

RED HOWE TWENTY X 28Y  
**RED WARD'S PR COUNTESS 513C 1952509**  
 RED WARD'S COUNTESS 116Y

**BW:** 77 lbs. **WW:** 510 lbs.

EPD'S	BW	WW	YW	MM	TM	CE	MCE
	0.8	28	48	13	27	6.0	8.0

- Moderate, solid, square made bull

CROWFOOT 6004S (Ee)  
 RED CROWFOOT BRNDINA 6359S  
 RED LETTER CONVICT 35S  
 RED WARD'S FREYJA 56N  
 HOWE MAVERICK 6W (RC)  
 RED HOWE MS ENVIOUS 34W  
 RED FLYING K PATRICK 202R  
 RED LETTER COUNTESS 8M



**RED WARD'S STRUCK 721E**

# 721E

## Red Ward's **STRUCK** 721E

DRAW 721E 2062166 Sept. 15/17 CE:\*\*\*

RED CROWFOOT MOONSHINE 8081U  
**RED WARD'S THUNDERSTRUCK 20C 1884261**  
 RED WARD'S FREYJA 39U

RED HOWE TWENTY X 28Y  
**RED WARD'S LASSIE 505C 1952505**  
 RED WARD'S LASSIE 77N

**BW:** 80 lbs. **WW:** 608 lbs.

EPD'S	BW	WW	YW	MM	TM	CE	MCE
	1.4	36	58	15	33	4.0	8.0

- One of the last Thunderstuck 20C bulls we have to offer
- Easy calving heifer bull

CROWFOOT 6004S (Ee)  
 RED CROWFOOT BRNDINA 6359S  
 RED LETTER CONVICT 35S  
 RED WARD'S FREYJA 56N  
 HOWE MAVERICK 6W (RC)  
 RED HOWE MS ENVIOUS 34W  
 RED FLYING K DYNAMITE 30L  
 RED WARD'S LASSIE 27J

# 722E

## Red Ward's SIGNATURE 722E

DRAW 722E 2062170 Aug. 04/17 CE:\*\*

RED CHOPPER K OZZI 109T  
**RED JLL SIGNATURE 49B 1778103**  
RED RIVERDALE COUNTESS 485M

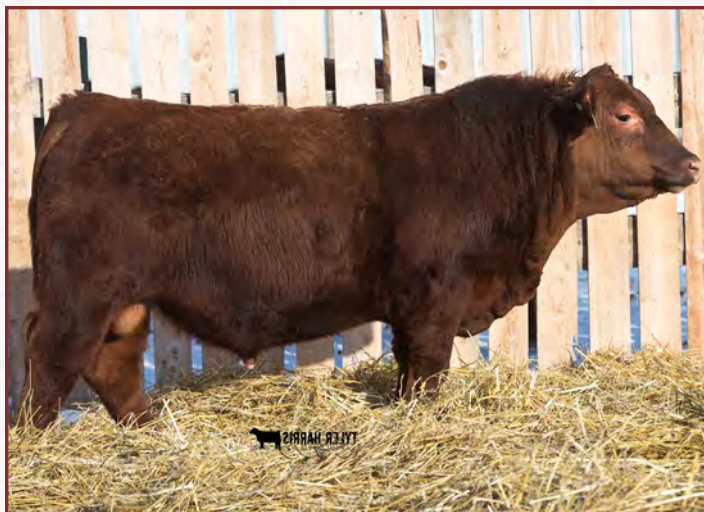
RED FLYING K PATRICK 202R  
**RED WARD'S LADYBIRD 414X 1658678**  
RED LETTER LADYBIRD 12S

**BW:** 83 lbs. **WW:** 568 lbs.

EPD'S	BW	WW	YW	MM	TM	CE	MCE
	0.6	31	50	13	28	5.5	8.5

• Solid, growthy Signature son

RED TER-RON MAMBO 28K  
RED CHOPPER K SCAARA 216M  
RED CRESCENT CREEK H0904 52K  
RED RIVERDALE BRANDY 224J  
RED PATRIOT 629  
RED FLYING K MS DYNAMO 156N  
RED WEST POPLAR PITT 2E 6P  
RED LETTER LADY BIRD 45P



**RED WARD'S SIGNATURE 722E**

# 737E

## Red Ward's SIGNATURE 737E

DRAW 737E 2062159 Aug. 29/17 CE:\*\*\*

RED CHOPPER K OZZI 109T  
**RED JLL SIGNATURE 49B 1778103**  
RED RIVERDALE COUNTESS 485M

RED U-2 ICON 223M  
**RED LETTER LADY BIRD 41P 1248814**  
RED LETTER BLACKBIRD 8E

**BW:** 76 lbs. **WW:** 594 lbs.

EPD'S	BW	WW	YW	MM	TM	CE	MCE
	0.0	26	42	13	26	9.0	12.0

• Well built bull with a good hip  
• 41P, a favorite Icon daughter, with a near perfect track record, she had a high seller to Wendell and Beryl Campbell and all females retained

RED TER-RON MAMBO 28K  
RED CHOPPER K SCAARA 216M  
RED CRESCENT CREEK H0904 52K  
RED RIVERDALE BRANDY 224J  
RED BLAZE V415  
RED U-2 ANEXA 5F  
RED SILVEIRAS REDFORD  
RED LETTER LADYBIRD 24L



**RED WARD'S SIGNATURE 737E**



**RED LETTER LADY BIRD 41P**  
DAM OF LOT 737E

# 740E

## Red Ward's PR SIGNATURE 740E

DRAW 740E 2062160 Aug. 02/17 CE:\*\*

RED CHOPPER K OZZI 109T  
**RED JLL SIGNATURE 49B 1778103**  
RED RIVERDALE COUNTESS 485M

RED FLYING K PATRICK 202R  
**RED WARD'S COUNTESS 116Y 1891685**  
RED LETTER COUNTESS 8M

**BW:** 83 lbs. **WW:** 598 lbs.

EPD'S	BW	WW	YW	MM	TM	CE	MCE
	0.8	26	41	12	25	5.5	9.5

• Free moving, large scrotalled, pasture ready bull  
• His dam, 116Y, has had other sons sell to Smith Northern Ranching, Duck Lake and the Willner Grazing Co-op

RED TER-RON MAMBO 28K  
RED CHOPPER K SCAARA 216M  
RED CRESCENT CREEK H0904 52K  
RED RIVERDALE BRANDY 224J  
RED PATRIOT 629  
RED FLYING K MS DYNAMO 156N  
RED CARRUTHERS BOOM 28H  
RED LETTER COUNTESS

# 742E

## Red Ward's SIGNATURE 742E

DRAW 742E 2062161 Aug. 24/17 CE:\*\*

RED CHOPPER K OZZI 109T  
**RED JLL SIGNATURE 49B 1778103**  
RED RIVERDALE COUNTESS 485M

RED CARRUTHERS BOOM 28H  
**RED LETTER COUNTESS 8M 1312203**  
RED LETTER COUNTESS

**BW:** 80 lbs. **WW:** 566 lbs.

EPD'S	BW	WW	YW	MM	TM	CE	MCE
	1.3	17	25	12	21	5.0	9.0

• His cow, 8M, gets the job done year after year! Other sons selling to Brian Mannix, North Battleford, Creek View Farms and Ritchie Farms

RED TER-RON MAMBO 28K  
RED CHOPPER K SCAARA 216M  
RED CRESCENT CREEK H0904 52K  
RED RIVERDALE BRANDY 224J  
RED SSS BOOMER 803B  
RED CARRUTHERS TRIBECCA 13F  
RED LETTER FAST TRAC 46A  
RED LETTER COUNTESS 19K

WARD'S RED ANGUS LONG YEARLINGS...



**BCC SOUTHERN STRENGTH 31C**

**REF.**

**BCC Southern STRENGTH 31C**

BCC 31C 1857325 Jan. 17/15

MOHNEN DENSITY 730

MOHNEN SOUTH DAKOTA 402 1727672

MOHNEN JILT 539

BCC HONKY TONK 21M

BJ LADY WREN 28W 1594933

BJ LADY WREN 12'99

EPD	BW	WW	YW	MM	TM	CE	MCE
2.2	45	75	18	41	2.0	3.0	

31C has muscle, performance and maternal power! All his sons have made the cut and all his females are in the replacement pen. Get in on this exciting herd sire, we lost him during the 2017 breeding season, these are his last sons to sell!



**BULLS THAT THRIVE  
IN THE REAL WORLD**

**REF.**

**Ward's C COMMANDER 87B**

COLW 87B 1891974 May 11/14

S A V WALL STREET 7091

HALL'S OUTLAW 85Z 1683423

PHP PATTY 86U

RED HANDFORD DYNAMITE 136L

C.WARD'S ERICA 97N 1245814 (RC)

CCL ERICA 2'00

EPD	BW	WW	YW	MM	TM	CE	MCE
3.5	49	76	20	45	-4.0	3.0	

Commander 87B is off Cole's top cow, Erica 97N! She has an amazing track record, numerous high sellers and still going! We had 87B coat color tested and the result was "EE" which means he is all Black. Commander was our overall high selling bull in 2016, selling to Gord Houston for a half interest! We are please to be able to bring him back! His daughters stand out in the pen and you will find his sons sale day, they are definitely sale features!

**REF.**

**KR CASH FLOW**

IMP 3402A 1788448 Mar. 01/13

SITZ DASH 10277

BARSTOW CASH 1881900

BARSTOW QUEEN W16

WK RETURN

WK LASS 1591

VERMILION LASS 0029

EPD	BW	WW	YW	MM	TM	CE	MCE
3.7	69	115	16	51	2.0	4.0	

This sire was recommended to us and we used KR Cash Flow through AI. Phenomenal performance in these sons! Thick, deep and WIDE, they are cow performance bulls that will add pounds to your calves!



**KR CASH FLOW**

**3F****Ward's UNANIMOUS 3F**

DRAW 3F 2062136 Jan. 16/18 CE:\*



VISIONTOPLINE ROYAL STOCKMAN  
**VISION UNANIMOUS 1418 1701532**  
 VISION EDELLA 665

GAMBLES ROYAL FLUSH  
 LAGRAND PRIDE 7140  
 BOYD ON TARGET 1083  
 VISION EDELLA 337  
 HF HEMI 176W  
 EGGEN BIG SKY MISS 61N  
 HF FREE WHEELER 193T  
 WILLABAR COUNTESS 116N

DFCC 176W HEMI 50Y  
**WARD'S PR COUNTESS 46A 1891707**  
 DBRL 193T COUNTESS 100W

**BW: 88 lbs. WW: 772 lbs.**

EPD'S	BW	WW	YW	MM	TM	CE	MCE
	2.4	55	94	15	43	1.0	5.0

- Only Vision Unanimous bull in sale
- Deep made, good footed, rugged bull
- Powerful Hemi Cow, 46A, has a son at Ritchie Farms, Harris

**WARD'S UNANIMOUS 3F****PAYDAY 17F**

FEATURE BULL

WARD'S BLACK ANGUS YEARLINGS...

**17F****Ward's PAYDAY 17F**

DRAW 17F 2062138 Jan. 22/18 CE:\*

BARSTOW CASH  
**KR CASH FLOW 1788448**  
 WK LASS 1591

SITZ DASH 10277  
 BARSTOW QUEEN W16  
 WK RETURN  
 VERMILION LASS 0029  
 RED VII DOMINOR 2N  
 RED HOWE MS GRAVITY 148R  
 RED YY RAMBLER 322N  
 HIDDEN RHODA 59M (RC)

RED HOWE DOMINOR 127U  
**WARD'S RHODA PR 47Y 1658701 (RC)**  
 YY RHODA 859U (RC)

**BW: 92 lbs. WW: 826 lbs.**

EPD'S	BW	WW	YW	MM	TM	CE	MCE
	4.2	59	98	18	48	-2.0	4.0

- Thick, thick, one of the widest made bulls we have ever raised
- Moves great on very correct feet and legs, with super length of body, very hard to find a hole in this bull
- Rhoda 47Y is an outstanding cow, daughters have sold to L-Dee Stock Farm and Blairs.Ag Cattle Co., sons going to Freeden Farms, Dundurn and Dave and Tina Thomson, Delisle
- Maybe the most interesting part of this bull is his color coat test came back Ee and he is a Red Carrier
- We will be retaining an interest in this bull and can't wait to see what the future holds for him

**WARD'S RHODA 47Y  
DAM OF LOT 17F**

WARD'S BLACK ANGUS YEARLINGS...



**WARD'S PR REVENUE 21F**

**21F**

**Ward's PR REVENUE 21F**

DRAW 21F 2062139 Jan. 24/18 CE:\*

BARSTOW CASH  
**KR CASH FLOW 1788448**  
 WK LASS 1591

HF FREE WHEELER 193T  
**DBRL 193T COUNTESS 100W 1527041**  
 WILLABAR COUNTESS 116N

**BW:** 93 lbs.

**WW:** 806 lbs.

EPD'S	BW	WW	YW	MM	TM	CE	MCE
	2.4	52	87	18	44	2.0	6.0

- Another KR Cash Flow with a straight **Black** pedigree
- Wide based bull with exceptional depth and thickness
- His dam, 100W, is a solid producer that has a daughter in herd and another to Rivendale Angus

SITZ DASH 10277  
 BARSTOW QUEEN W16  
 WK RETURN  
 VERMILION LASS 0029  
 HF FREE WHEELER 191N  
 WILBAR RUBY 955N  
 WILLABAR RIGHT TIME 282G  
 WILLABAR COUNTESS 55E



**WARD'S C SOUTHERN STRENGTH 30F**

**30F**

**Ward's C SOUTHERN STRENGTH 30F**

COLW 30F 2062174 Feb. 01/18 CE:\*

MOHNEN SOUTH DAKOTA 402  
**BCC SOUTHERN STRENGTH 31C 1857325**  
 BJ LADY WREN 28W

WHITESTONE WIDESPREAD MB  
**C WARD'S MEERA 7Z 1706701**  
 NORTHERN VIEW EILEENMERE 85W

**BW:** 90 lbs.

**WW:** 638 lbs.

EPD'S	BW	WW	YW	MM	TM	CE	MCE
	3.9	38	68	16	35	-2.0	6.0

- Stout, well balanced bull
- His dam, 7Z, is turning out to be one of Cole's best black cows. A daughter, 28C, was purchased by Eastondale Angus, producing a \$10,000 bull at their 2018 sale, she also had a sale feature last year selling to Lloyd Bruner, Parkside

MOHNEN DENSITY 730  
 MOHNEN JILT 539  
 BCC HONKY TONK 21M  
 BJ LADY WREN 12'99  
 N BAR EMULATION EXT  
 M B RACHEL 2173  
 S A V HERITAGE 6295  
 NORTHERN VIEW EILEENMERE 89R



**C WARD'S MEERA 7Z**  
 DAM OF LOT 30F



**WARD'S CASSANOVA 41F**

**41F**

**Ward's CASSANOVA 41F**

DRAW 41F 2062144 Feb. 09/18 CE:\*

BAD LANDS INITIATIVE 375X  
**EASTONDALE CASSANOVA 126'14 1789233**  
 EASTONDALE CASSIE 131'08

REMITALL COMMANDER 526U  
**WARD'S COUNTESS 29Z**  
 REMITALL COUNTESS 694U

**BW:** 90 lbs.

**WW:** 742 lbs.

EPD'S	BW	WW	YW	MM	TM	CE	MCE
	3.8	46	81	21	44	-1.0	7.0

- Straight **Black** pedigree
- Solid, well balanced bull
- Pure power and performance use on cows

SANDY CREEK INITIATIVE 52T  
 BAD LANDS LADY 311N  
 B HILLS FRL DURATION 606  
 G B T CASSIE 2J  
 REMITALL H RACHIS 21R  
 LLB EULIMA 547H  
 JUSTAMERE 1118 CASH 665P  
 WILLABAR COUNTESS 17N

# COMMAND 42F



FEATURE BULL

WARD'S BLACK ANGUS YEARLINGS...

## 42F

### Ward's C COMMAND 42F

COLW 42F 2062176 Feb. 16/18 CE:\*

## 74F

### Ward's DAKOTA 74F

DRAW 74F 2062151 Feb. 25/18 CE:\*\*\*

HALL'S OUTLAW 85Z  
**WARD'S C COMMANDER 87B 1891974** (E)  
 C.WARD'S ERICA 97N (RC)

DFCC 176W HEMI 50Y  
**WARD'S C LUCY 25A 1929938**  
 DBRL 03M LUCY 14X

**BW:** 93 lbs.

**WW:** 784 lbs.

EPD'S	BW	WW	YW	MM	TM	CE	MCE
	4.3	56	90	22	50	-4.0	4.0

- Straight **Black** pedigree
- Guts, nuts and butts!! He is a tank
- Exactly what we hoped for out of the Commander bull
- First bull out of his dam, 25A and we have retained both her daughters

S A V WALL STREET 7091  
 PHP PATTY 86U  
 RED HANDFORD DYNAMITE 136L  
 CCL ERICA 2'00  
 HF HEMI 176W  
 EGGEN BIG SKY MISS 61N  
 DMM AMBUSH 03M  
 DBRL FREEDOMS LUCY 5R

MOHNEN SOUTH DAKOTA 402  
**BCC SOUTHERN STRENGTH 31C 1857325**  
 BJ LADY WREN 28W

DURALTA UP SWITCH 13A  
**WARD'S ATLANTA 32C 1932308**  
 WARD'S PR ATLANTA 7A

**BW:** 81 lbs.

**WW:** 564 lbs.

EPD'S	BW	WW	YW	MM	TM	CE	MCE
	1.3	39	71	19	39	5.0	7.0

- A straight **black** heifer bull
- His half brother last year sold to Dylan and Samantha Heming, Harris

MOHNEN DENSITY 730  
 MOHNEN JILT 539  
 BCC HONKY TONK 21M  
 BJ LADY WREN 12'99  
 SITZ UPWARD 307R  
 SCC 5320 TIBBIE 26M  
 SOO LINE KODIAK 9194  
 FRL ATALANTA 002X



**2018 BRANDING**



**WARD'S DAKOTA 74F**

WARD'S BLACK ANGUS YEARLINGS...



**2018 SUMMER TOUR**

**79F**

**Ward's OUTLAW 79F**

DRAW 79F 2062154 Mar. 23/18 CE:\*\*

HALL'S OUTLAW 85Z  
**WARD'S C COMMANDER 87B 1891974** (Ee)  
 C.WARD'S ERICA 97N (RC)

WILBAR UNFORGIVEN 242X  
**WARD'S MKR ANNIE 34Z 1930551**  
 WARD'S PRINCESS ANNIE 69X

S A V WALL STREET 7091  
 PHP PATTY 86U  
 RED HANDFORD DYNAMITE 136L  
 CCL ERICA 2'00  
 BAR-E-L UNFORGIVEN 102U  
 WILBAR LUCY 806M  
 FRL DECADE 3U  
 ISLA BANK PRINCESS ANNIE 20P

**BW: 80 lbs.      WW: 538 lbs.**

EPD'S	BW	WW	YW	MM	TM	CE	MCE
	1.7	36	59	20	38	2.0	8.0

- Deep, moderate, uniform heifer bull
- Straight **Black** pedigree



**WARD'S HITCH 82F**

**82F**

**Ward's HITCH 82F**

DRAW 82F 2062155 Mar. 24/18 CE:\*\*

RED SVR HITCH 63B  
**RED SVR HITCH 23D 1934338**  
 RED SVR MISS LARK 88B

RED DWAJO CANYON 28R  
**WARD'S SUSAN 350W 1515367** (RC)  
 EASTONDALE SUSAN 115'06

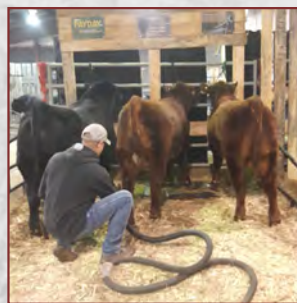
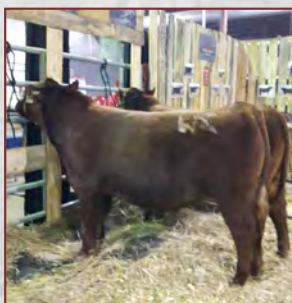
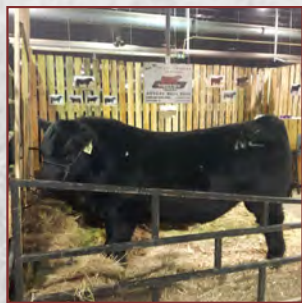
RED CLAY BANDIT 18X  
 RED SVR CHRISTINA 12Y  
 RED T-K BAILOUT 1Z  
 SVR MISS LARK 249X (RC)  
 RED SODER CANYON 126M  
 RED DWAJO ALBERTA 43L  
 B.B.A.R HERO 1267  
 KENWAW SUSAN 3F

**BW: 81 lbs.      WW: 582 lbs.**

EPD'S	BW	WW	YW	MM	TM	CE	MCE
	1.1	44	71	22	44	3.0	6.0

- Red Carrier
- Long bodied, good footed bull with calving ease
- This is an interesting bull, 350W has been admired by many

**THANKS FOR VISITING US AT THE YARDS!**





**REF.**

**Eastondale CASSANOVA 126'14**

VK 126B 1789233 Mar. 05/14

SANDY CREEK INITIATIVE 52T  
BAD LANDS INITIATIVE 375X 1555699  
BAD LANDS LADY 311N  
B HILLS FRL DURATION 606  
EASTONDALE CASSIE 131'08 1451709  
G B T CASSIE 2J

EPD	BW	WW	YW	MM	TM	CE	MCE
	2.6	37	68	16	35	2.0	10.0

We ask a lot of this bull and he doesn't miss a beat! We own him with Double V Angus, he breeds in both herds in the spring, then we bring him back to breed the black fall cows! He is so well put together structurally, with the best feet we have seen. He handles it like a walk in the park! His bull calves are easy doing, moderate with muscle and they travel on sound feet and legs like their sire!



**EASTONDALE CASSANOVA 126 14**

**702E**

**Ward's CASSANOVA 702E**

DRAW 702E Unregistered Aug. 25/17 CE:\*\*\*

SANDY CREEK INITIATIVE 52T  
BAD LANDS LADY 311N  
BAD LANDS INITIATIVE 375X  
EASTONDALE CASSANOVA 126'14 1789233 B HILLS FRL DURATION 606  
EASTONDALE CASSIE 131'08 G B T CASSIE 2J  
REMITALL H RACHIS 21R  
REMITALL COMMANDER 526U  
LLB EULIMA 547H  
WARD'S PRIDE 4Z 1929915  
HOFF MAGNIFY SC 1321 315  
REMITALL PRIDE 231M  
REMITALL PRIDE 525U

BW: 73 lbs. WW: 682 lbs.

(PE) EPD'S	BW	WW	YW	MM	TM	CE	MCE
	4.0	42	75	17	38	-1.8	6.3

- Calving ease bull that will cover more heifers
- Due to a clerical error, sells with no registration paper



**WARD'S CASSANOVA 702E**

**720E**

**Ward's C CASSANOVA 720E**

COLW 720E 2062179 Oct. 02/17 CE:\*\*

SANDY CREEK INITIATIVE 52T  
BAD LANDS LADY 311N  
BAD LANDS INITIATIVE 375X  
EASTONDALE CASSANOVA 126'14 1789233 B HILLS FRL DURATION 606  
EASTONDALE CASSIE 131'08 G B T CASSIE 2J  
RED BUF CRK DYNAMICS 3820  
RED HANDFORD BRIDGET 8C  
RED HANDFORD DYNAMITE 136L  
C.WARD'S ERICA 97N 1245814 (RC) STEVENSON RAINMAKER 630G (RC)  
CCL ERICA 2'00 CUDLOBE ERICA 62H

BW: 84 lbs. WW: 500 lbs.

EPD'S	BW	WW	YW	MM	TM	CE	MCE
	2.3	26	46	15	28	1.0	7.0

- This bull is the last of 97N's natural calves
- Moderate made and chunky
- Youngest fall bull we have



**C WARD'S ERICA 97N  
DAM OF LOT 720E**



**WARD'S C CASSANOVA 720E**

**WARD'S BLACK ANGUS LONG YEARLINGS...**



**WARD'S CASSINOVA 724E**



**WARD'S INITIATIVE 727E**



**WARD'S CASSANOVA 730E**



**WARD'S PR CASSINOVA 746E**

## 724E

### Ward's **CASSINOVA** 724E

DRAW 724E 2067550 Aug. 16/17 CE:\*\*

BAD LANDS INITIATIVE 375X  
**EASTONDALE CASSANOVA 126\*14 1789233**  
 EASTONDALE CASSIE 131'08

FRL DECADE 3U  
**BLACK NANCE OF RED LETTER 73X 1596088**  
 REMITALL BLACK NANCE 519R

SANDY CREEK INITIATIVE 52T  
 BAD LANDS LADY 311N  
 B HILLS FRL DURATION 606  
 G B T CASSIE 2J  
 BEVERLY HILLS CENTENNIAL 503  
 FRL BLACK BEAUTY 9M  
 W C C ZAF HOOSIER HEARTLAND  
 KBJ BLACK NANCE 558N

**BW: 86 lbs. WW: 682 lbs.**

EPD'S	BW	WW	YW	MM	TM	CE	MCE
	2.4	31	56	19	35	3.0	9.0

- Straight Black pedigree
- Deep, thick, solid, ranch bull

## 727E

### Ward's **INITIATIVE** 727E

COLW 727E 2067535 Aug. 06/17 CE:\*\*\*

BAD LANDS INITIATIVE 375X  
**EASTONDALE CASSANOVA 126\*14 1789233**  
 EASTONDALE CASSIE 131'08

RED WARD'S BOLD FUTURE 39X  
**WARD'S C ERICA 519C 1952567 (RC)**  
 WARD'S C ERICA 308A (RC)

SANDY CREEK INITIATIVE 52T  
 BAD LANDS LADY 311N  
 B HILLS FRL DURATION 606  
 G B T CASSIE 2J  
 RED HOWE BOLD FUTURE 86T  
 RED LETTER BLACKBIRD 27L  
 RED HOWE TWENTY X 28Y  
 CCL ERICA 2'00

**BW: 78 lbs. WW: 722 lbs.**

EPD'S	BW	WW	YW	MM	TM	CE	MCE
	2.4	44	75	20	42	2.0	9.0

- Good footed, free moving, calving ease bull

## 730E

### Ward's **CASSANOVA** 730E

DRAW 730E Unregistered Aug. 28/17 CE:\*\*

BAD LANDS INITIATIVE 375X  
**EASTONDALE CASSANOVA 126\*14 1789233**  
 EASTONDALE CASSIE 131'08

REMITALL COMMANDER 526U  
**WARD'S EULIMA 67Z 1933011**  
 REMITALL EULIMA 783U

SANDY CREEK INITIATIVE 52T  
 BAD LANDS LADY 311N  
 B HILLS FRL DURATION 606  
 G B T CASSIE 2J  
 REMITALL H RACHIS 21R  
 LLB EULIMA 547H  
 REMINGTON LINEBACKER 253R  
 REMITALL EULIMA 158K

**BW: 86 lbs. WW: 680 lbs.**

(PE) EPD'S	BW	WW	YW	MM	TM	CE	MCE
	3.8	42	74	18	39	-1.8	5.0

- Big, stout, soggy bull
- Due to a clerical error, sells with no registration papers

## 746E

### Ward's **PR CASSINOVA** 746E

DRAW 746E 2067536 Oct. 03/17 CE:\*

BAD LANDS INITIATIVE 375X  
**EASTONDALE CASSANOVA 126\*14 1789233**  
 EASTONDALE CASSIE 131'08

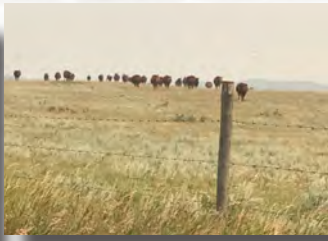
RED YY DSGN KING 522R  
**YY SHADY LADY 726T 1388280 (RC)**  
 BAR-X SHADY LADY 326R (RC)

SANDY CREEK INITIATIVE 52T  
 BAD LANDS LADY 311N  
 B HILLS FRL DURATION 606  
 G B T CASSIE 2J  
 RED 5L NORSEMAN KING 229I  
 RED DEVOLANE LINDA 2C  
 RED BASIN LOGAN 2917  
 BAR-X SHADY LADY 58L-23N (RC)

**BW: 88 lbs. WW: 566 lbs.**

EPD'S	BW	WW	YW	MM	TM	CE	MCE
	2.0	25	43	16	29	3.0	8.0

- Red Carrier
- Younger fall bull with excellent growth



## CALVING EASE RATINGS

We evaluate each bull for calving ease determined by bone size, birth weight and maternal history. Scoring as follows:

- \*\*\* **3 Stars** - Recommended for use on moderate framed first calf heifers.  
Should produce minimal or no calving trouble.
- \*\* **2 Stars** - Recommended for use on large framed first calf heifers.  
Should produce minimal or no calving trouble.
- \* **1 Star** - Recommended for use on cows.  
Should produce minimal or no calving trouble.

## TERMS AND CONDITIONS...

### TERMS:

The terms of the sale are cash or cheque, payable at par at the sale location. The right of property shall not pass until after settlement has been made; no invoicing on buyers in attendance unless previous arrangements have been made. Each animal sells to the highest bidder and in cases of disputes, the auctioneer's decision will be final. Current exchange rates will be announced sale day. All monies are in Canadian funds.

### CERTIFICATE OF REGISTRATION

Each animal will carry papers issued by the Canadian Angus Association. A certificate of registry duly transferred will be furnished to the buyer for each animal after payment has been made.

### GUARANTEE

Each animal becomes the purchaser's risk immediately after the animal is sold. All animals in this sale will be sold under the terms and guarantees set forth by the Canadian Angus Association with regard to health, freedom from defects and from both reproductive and specific genetic unsoundness.

### BREEDING GUARANTEE:

We guarantee to provide a sound breeding bull capable of passing a semen test at 14 months of age. Any bull failing to be a satisfactory breeder will be replaced with a bull of equal value and quality, or a credit given towards purchase of another bull. All consigners fully stand behind their bulls!

### LIABILITIES:

All persons attend the sale at their own risk. The seller, facility owner and sale manager assume no liability, legal or otherwise, for any accidents that occur. It is understood that T Bar C Cattle Co.(2013) Ltd. is acting only as a medium between buyer and seller and is not responsible for any obligations to collect or enforce collection of any monies between parties and any legal action that may, in extreme cases, be taken must be between buyer and seller. T Bar C Cattle Co.(2013) Ltd. assumes no responsibility of any credit extended by the seller to the buyer. The buyer must look to the seller for fulfillment of all guarantees and representations made hereunder.

### SEMEN COLLECTION:

Ward's Red Angus reserves the right to collect 100 straws of semen on any bull in this catalogue. This collection would be done at our expense and the purchaser's convenience and would be for in herd use only.

### PHONE, MAIL AND WIRE BIDS

Bidders unable to attend the sale may phone, wire or mail their bids and instructions to the sale manager, auctioneer or special representatives. Bids must be received in sufficient time prior to the sale.

### ERRORS

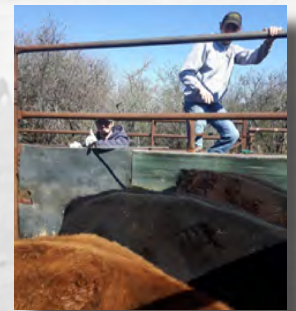
All announcements at sale time, written or oral, supercede any written material in the catalogue.

### WEIGHT INFORMATION:

BW – is the actual weight at birth (within 24 hours). WW is actual weight taken on September 2, 2018 unless otherwise stated. A current sale weight will be available sale day.

### LOADOUT:

No bulls will be allowed to load out until the conclusion of the sale.



Return Undeliverable To:

T Bar C Cattle Co. Ltd.  
Box 2330  
Warman, SK S70 4S0



CREATED BY  
*Today's*  
Publishing