

2023
CANADIAN WESTERN AGRIBITION

Speckle Park

NATIONAL SALE
NOVEMBER 22, 2023



FROM THE DESK AT T BAR...

This is your invitation to join us on November 22, 2023, for the Canadian National Speckle Park Show and Sale hosted by Canadian Western Agribition, Regina, Saskatchewan. This is where it all got started. Over the past decade or so, the Speckle Park breed rapidly expanded domestically and internationally. Through the many years hundreds and hundreds of visitors from Canada and around the globe have viewed, appreciated, and sourced their breeding stock through this feature event. The National Sale has become the source for superior genetics which have been responsible in moving the breed forward.

The sale lineup for the 2023 National Sale is exciting and dynamic... right from the out-cross herd sire prospect, through the bred heifers who are a month or two from cashing a coupon, to the lineup of the future... the show prospects. Futuristic with the freshest, newest genetics, many of these exciting young ladies are destined to make the front pastures of this nation and eventually great donors... an integral part for this breeds future growth.

Plan to be with us early on November 22nd to view the National show, find your selections as they compete on the tanbark, then own them at the drop of the hammer at the 3:00 P.M. National Sale.

For those who cannot attend, feel free to give any of our T Bar team a call as we will be pleased to assist you with your purchases in a professional and confidential manner. Both the show and sale will be broadcast on DLMS.

Chris Poley

CHRIS POLEY
306-220-5006



SHANE MICHELSON
403-363-9973



BEN WRIGHT
519-374-3335



LEVI RIMKE
204-851-4515



BID ONLINE
D | L | M | S
www.dlms.ca

Mark Shologan
780-699-5082
Purebred Team
780-991-30252



Sale Management

T Bar C Cattle Co. Ltd.
Box 2330, Warman, SK S0K 4S0
Office: 306-933-4200 • Fax: 306-934-0744
info@tbarc.com • www.tbarc.com

2023 CANADIAN WESTERN AGRIBITION NATIONAL *Speckle Park* SALE

SALE STAFF

Chris Poley, Auctioneer 306-220-5006
Shane Michelson 403-363-9973
Ben Wright 519-374-3335

Canadian Speckle Park Association

5160 Skyline Way NE Calgary, Alberta T2E 6V1
Ph: 587-226-0693
Email: info@canadianspecklepark.ca
www.canadianspecklepark.com

SCHEDULE OF EVENTS

TUESDAY, NOVEMBER 21

11:30 am First Lady Classic & Futurity
12:00 pm President's Classic

WEDNESDAY, NOVEMBER 22

9:00am Speckle Park Show
Chevrolet GMC Arena
3:30 pm *Speckle Park Sale*
John Deere Sale Arena

THURSDAY, NOVEMBER 23

3pm - 5pm Canadian Speckle Park Junior
Members Meeting | Queensbury
Event Centre Meeting Room #5

Canadian Speckle Park Association
Banquet & Awards | Queensbury
Event Centre Room #1

6:00pm Doors Open with Bar Service
7:00pm Supper

SATURDAY, NOVEMBER 25

8:30 am BMO Canadian Junior Beef Extreme
4:00 pm Agribition Beef Supreme,
presented by CN

BID ONLINE

D | L | M | S
www.dlms.ca

Mark Shologan
780-699-5082
Purebred Team
780-991-30252

BULL CALF



SECOND CHANCE CEASAR 3C - SIRE



MISS BETTY CROSSROADS SLB 29B - DAM

ED/ED PP Non-Carrier

101

CALICO CREEK *Lawless* 9L

MALE CAN18687-PB LS 9L
BW: 87 LBS.

15-JAN-23
PUREBRED

LEGACY DEVITO 44X
SECOND CHANCE CEASAR 3C
TIA-ROSE OF SARA LEE 3T

LEGACY UPPERCUT 74U
LEGACY TURN-ON 49T
TUMBLEWEED ACRES CORBIN 27P
ROB 'N SON'S FARMS 16R

ROCKY RIDGE TEE BONE 2T
MISS BETTY CROSSROADS SLB 29B
BLACK BEAUTY OF P.A.R. 21S

LEGACY ROUHRIDER 52R
LEGACY RENA 100R
P.A.R. SILVER 11L
PRAIRIE HILL MILLIE 21M

From his inception, Calico Creek Lawless 9L was designed to be a total outcross bull, which in this breed is easier said than done. Great bulls come from great cows, and with the dam being half of the equation, I picked one that I consider to be one of the greats, Miss Betty Crossroads SLB 29B! Betty is a hard working, heavy milking, no nonsense cow, sired by the Rocky Ridge T Bone bull. With careful thought and consideration she was paired with Second Chance Ceasar 3C, an outcross bull that sold through this very sale. After seeing the impact Ceasar was having in the commercial aspect of the industry I chose to implement him into my purebred program. Lawless is the first and only purebred Ceasar calf in the country. When Lawless hit the ground he was exactly what I had expected, and more. He excels in performance, rate of gain, correct conformation, optimal frame size, testicle development at an early age, and has an overall demanding presence! Lawless is the real deal and was never intended to be made available, but here he is! This bull will work wonders in any herd and just think of all his potential going forward.

Offering half interest.

Option to double up and buy outright- in that case seller retains the right to collect 30 straws for in herd use.

CONSIGNED BY Calico Creek Speckle Parks

HEIFER CALF



INC TALLADEGA 11J - SIRE



PINE VALLEY ANNA 4C - DAM



102

INC *Centerfold* 80L EDED - PP - Carrier

FEMALE CAN18574-PB INC 80L
BW: 86 LBS.

10-FEB-23
PUREBRED

OUTBACK JOEY 25D
INC TALLADEGA 11J
SPOTS 'N SPROUTS 3R

CODIAK OH MY GOSH GNK 60A
RIVER HILL 54Z BELLA-JOY 25B
STAR BANK LACERTA 68L
SPOTS'N SPROUTS 5J

LEGACY UNRIVALED 12U
PINE VALLEY ANNA 4C
CODIAK AMANDA GNK 42Y

LEGACY SCOUT 10S
STAR BANK 34R
CODIAK CRIKEY GNK 13U
CODIAK UNIQUE GNK 8R

Oxford dictionary defines Centerfold as follows: " A place reserved for someone or something of superior quality." ... INC 80L lives up to this description.

Clean fronted, big bodied and sound – this Talladega daughter is the very first female ever offered from this great pairing. With a dam such as Pine Valley Anna 4C, with her superior milk production and incredible depth of rib, this combination cannot fail. There is little doubt that INC Centerfold 80L has a tremendous future ahead of her. This is another example of INC's commitment to always offer our very best at the CWA National Speckle Park Sale.

CONSIGNED BY INC Cattle Company

HEIFER CALF



103

RAVENWORTH *Willow* 509L

FEMALE CAN18501-PB
BW: 70 LBS.

GDB 509L

11-JAN-23
PUREBRED

RAVENWORTH KLEOS 3Y
RAVENWORTH INVICTUS 103C
RAVENWORTH NORTHERN STAR 101A

STAR BANK 64R RIO 6W
STAR BANK TUCANA 38T
SPOTS 'N SPROUTS STANDS ALONE
STAR BANK NIGHTGLOW 46N

STAR BANK 58L
NOTTA 26T JANETTE 3W
NOTTA 2R PRETENDER 4T

SPOTS 'N SPROUTS JUNO 103J
STAR BANK 68G
P.A.R. RILLEY 2R
NOTTA PRETENDER 64P

CONSIGNED BY Ravenworth Cattle



RAVENWORTH INVICTUS 103C
SIRE



NOTTA 26T JANETTE 3W
DAM



RAVENWORTH WILLOW 510H
FULL SIB



Ravenworth Willow 304K
510H first Calf 2022



RAVENWORTH WILLOW 134E
FULL SIB

Color: ED/ED Polled: PP Myostation: no variance

Proven combination...Full sib to Ravenworth Willow 510H - MISS WORLD SPECKLE PARK, 2022 Agribition Grand Champion female and 2022 Farm Fair Grand Champion Female, 2021 Breed Champion First Lady Classic, 2021 Reserve Champion Female Farm Fair. Willow 509L is an embryo calf from the exact same mating and has all of the great traits and genetics of her sister. Her pedigree has some of the breed greats and it definitely shows. This angular feminine heifer has volume, great muscle shape and overall balance with great lines. The Willow cow family at Ravenworth is a special one not only in the show ring but in the pasture, these female are productive and attractive. The old saying is "you have to part with some of the good ones"...here she is right out of the top of our heifer pen.

HEIFER CALF



RIVER HILL L11 HORATIO 005H - SIRE



PATERNAL SIB



104

RH 005H *Cinder* 54L

FEMALE CAN18248-PB BED 54L
BW: 90 LBS.

20-JAN-23
PUREBRED

PREMIER 101Y LOGIC L11
RIVER HILL L11 HORATIO 005H
RIVER HILL 54Z CHANÁ%L 25C

SIX STAR 82U ROYAL FLESH 101Y
SPKNZ H2
RIVER HILL 60W LINE DRIVE 54Z
RIVER HILL 68 ULTIMATE JOY 25U

CODIAK SAILOR BOY GNK 20Y
RIVER HILL CLAVET-CINDER 54C
RIVER HILL AVET-CINDER 54A

CODIAK SPECIAL K CDK 4U
CODIAK WILD LADY GNK 46W
NOTTA 68L CUSTOM CHROME 106Y
RIVER HILL YVET-CINDER 54Y

Here is a chance to own a part of the Highly Sought After "Cinder" family. A stacked pedigree with accolades from around the globe, have led to this future donor female. Cinder 54L is a powerful female with a confident presence that will not disappoint. Depth, width, length and barrel shine through in this dark sided female. It was a tough decision when Chris wanted this female but we believe the best should be shared not hidden. Visitors are always welcome to see this wonderful female and the rest of the River Hill herd.

CONSIGNED BY River Hill Farm

HEIFER CALF



KFC GLADIATOR 1G - SIRE

105

KFC *Damaris* 13L

205 day 634lbs Homo Black Homo Polled Myo Non-Carrier

FEMALE CAN17932-PB KFC 13L
BW: 85 LBS.

11-JAN-23
PUREBRED

RIVER HILL 60W EXCALIBUR 345E
KFC GLADIATOR 1G
RIVER HILL 20Y BECKA 1B

RIVER HILL 26T WALKER 60W
PRAIRIE HILL DREAMAKER 88K
CODIAK SAILOR BOY GNK 20Y
RIVER HILL 26T TEAKA 1Y

COLGAN'S BAXTER 1B
COLGAN'S DAMARIS 03D
BEAUTY MELISSA OF P.A.R. 561B

MOOVIN ZPOTZ CAMARO 6X
MOOVIN ZPOTZ ROXY AMBER 4R
UNEEDA YULE TIDE OF PAR 05Y
MELISSA II OF P.A.R. 56X

KFC Damaris 13L is a heifer that we are really excited about. She is big framed, long sided and deep ribbed. She doesn't go unnoticed. The Gladiator 1G females we really appreciate for their attractiveness while still being functional cattle. The first 2 have calved in 2023 and they have tidy udders and their calves weaned above average. Damaris 03D is a heavy milking Baxter daughter that weans off big calves every fall. 13L has a lot of promise and we are looking forward to the kind of cow she will become.

Offering 50%, no possession.

CONSIGNED BY KFC Farms Ltd

HEIFER CALF



106

KFC *Hocus Pocus* 9L

205 day 563lbs Homo Black Homo Polled Myo Non-Carrier

FEMALE CAN17929-PB KFC 9L
BW: 80 LBS.

9-JAN-23
PUREBRED

PREMIER 101Y LOGIC L11
INC FULLY CHARGED 75H
SIX STAR DIAMOND 23X

SIX STAR 82U ROYAL FLESH 101Y
SPKNZ H2
NOTTA ROMEO 64R
STAR BANK 89S

STEELE BLACK MAGIC 22F
KFC HOCUS POCUS 68H
STEELE SPIRIT 30E

UPTO SPECS ULYSSES 25U
STEELE CHARLENE PRIDE 10C
CODIAK PUTNAM GNK 61Y
LEGACY SASSAFRAS 97Y

KFC Hocus Pocus 9L is a moderate framed easy fleshing female. Her dam is a really nice young cow with a near perfect udder. This heifer looks to be following in her footsteps. 9L's sire Fully Charged 75H was the pick of the bull calves from INC back in 2021. His calves are stout, easy doing with a wide base. 9L is no exception.

CONIGNED BY KFC Farms Ltd

HEIFER CALF



SILVER TIP GOMEZ 50G - SIRE



CALICO CREEK HEAVEN SENT 8H - DAM

107

CALICO CREEK *Lavender* 1L

ED/ED HP Non-Carrier.

FEMALE CAN18685-PB LS 1L
BW: 79 LBS.

3-JAN-23
PUREBRED

STEELE FRONT RUNNER 5E
SILVER TIP GOMEZ 50G
SILVER TIP 26Z STS 09A

UPTO SPECS ULYSSES 25U
LEGACY UNITY 51X
REMIN'S SPECIAL 1L
MOOVIN ZPOTZ PONTIAC GTO 26X

FLYING E ABNER 4A
CALICO CREEK HEAVEN SENT 8H
CALICO CREEK EPIPHANY 12E

P.A.R. X-LOG 21X
LEGACY RENA 100R
P.A.R. THROTTLE 66T
PETULA OF P.A.R. 61P

Calico Creek Lavender is a very sharp made and attractive heifer calf. She has a super quiet disposition and was a dream to halter break. Lavender's dam, Heaven Sent is a young cow that is already working her way up the ranks of the Calico Creek herd, and this heifer calf is her mirror image. Silvertip Gomez has proven himself to pass on that style and smoothness that he himself carries. Whether you're after a future show project or a solid producing future cow, Lavender is one to consider.

CONSIGNED BY Calico Creek Speckle Parks

HEIFER CALF



108

HIGHMARK *Lovella* 15L

FEMALE CAN18714-PB HMK 15L
BW: 85 LBS.

14-FEB-23
PUREBRED

OUTBACK JOEY 25D
INC TALLADEGA 11J
SPOTS 'N SPROUTS 3R

CODIAK OH MY GOSH CNK 60A
RIVER HILL 54Z BELLA-JOY 25B
STAR BANK LACERTA 68L
SPOTS'N SPROUTS 5J

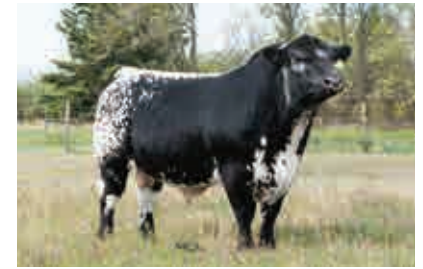
Lovella 15L gives you the kind of style and structure to become a great brood cow. Out of Highmark Hacienda 101H, a framey Logic daughter and sired by the great Talladega 11J, this pretty girl will catch your eye and add performance to your herd

PREMIER 101Y LOGIC L11
HIGHMARK HACIENDA 101H
SIX STAR DIAMOND 23X

SIX STAR 82U ROYAL FLESH 101Y
SPKNZ H2
NOTTA ROMEO 64R
STAR BANK 89S

CONSIGNED BY Highmark Stock Farm

HEIFER CALF



COLGAN'S GENERAL 20G - SIRE LOTS 109 & 110



COLGAN'S LUMOS 10L

109

COLGAN'S *Lumos* 10L

Coat Color - EDED Polled - PP Myostatin - No Variants

FEMALE CAN18744-PB
BW: 78 LBS.

CCCC 10L

29-JAN-23
PUREBRED

COLGAN'S BAXTER 1B
COLGAN'S GENERAL 20G
CODIAK URE IT GNK 48U

MOOVIN ZPOTZ CAMARO 6X
MOOVIN ZPOTZ ROXY AMBER 4R
CODIAK KOSMO GNK 17R
NORALTA HALETTE 11H

CODIAK ALEXANDER GNK 75A
COLGAN'S CHIFFON 11C
TAFFETA OF P.A.R. 01A

RIVER HILL 26T YAGER 99Y
CODIAK BLACK PEARL 28X
P.A.R. XCALABAR 6X
TAFFETA OF P.A.R. 01T

If you are looking for a smooth made heifer, here she is. This General daughter has a very gentle mind and was super easy to halter break.

CONSIGNED BY Colgan's Cattle Company

HEIFER CALF



INC GERBER DAISY 61H - DAM



COLGAN'S LAYLA 37L



Coat Color - EDED Polled - PP Myostatin - NT821,1

110

COLGAN'S *Layla* 37L

FEMALE CAN18745-PB
BW: 80 LBS.

CCCC 37L

19-FEB-23
PUREBRED

COLGAN'S BAXTER 1B
COLGAN'S GENERAL 20G
CODIAK URE IT GNK 48U

MOOVIN ZPOTZ CAMARO 6X
MOOVIN ZPOTZ ROXY AMBER 4R
CODIAK KOSMO GNK 17R
NORALTA HALETTE 11H

SPOTS 'N SPROUTS DUSTY 124D
INC GERBER DAISY 61H
CODIAK BECKAH GNK 92B

NOTTA 68L CUSTOM CHROME 106Y
SPOTS 'N SPROUTS 15W
CODIAK OSCAR GNK 8S
CODIAK RHANA GNK 70Y

This General daughter has a wide top, good hip and wide pins. The dam, INC 61H, has a very tidy udder and goes back to some older pedigree.

CONSIGNED BY Colgan's Cattle Company

HEIFER CALF



D.A.M. DOTS 94A ELECTRIC 31E - SIRE



WILLOW LANE KLASSY GIRL 7K - FULL SIB

111

WILLOW LANE *Lectra* 4L

Homo Black, Hetero Polled, Myostatin Non-Carrier

FEMALE CAN17351-PB MAK 4L
BW: 88 LBS.

31-JAN-23
PUREBRED

RIVER HILL 12X A'MAN 94A
D.A.M. DOTS 94A ELECTRIC 31E
NOTTA 68L LIGHTNING LADY 31X

CODIAK FIDDLER GNK 12X
PRAIRIE HILL PASSION 94P
STAR BANK LACERTA 68L
STAR BANK 54R

SECOND CHANCE BAZINGA 2B
WILLOW LANE GEORGIA 4C
WILLOW LANE DARLIN 3D

LEGACY DEVITO 44X
RIVER HILL TIC-TAC 02T
P.A.R. AIRWAVE 16A
MOOVIN ZPOTZ BUCKLE 70B

When Chris selected this heifer, I would have never considered selling her if I didn't already a full sister to her. The D.A.M. Dots 94A Electric 31E females have been doing great in the pasture as foundation cows but are also making frequent trips to the champion drives. Lectra will be no different. She has style, structure, power, and muscle. Her dam is a productive cow with an impeccable udder that puts the pounds on her calves every year. Lectra has been nothing but impressive for me so now it's time for you to get her home and see what she can do for you..

CONSIGNED BY Willow Lane Land and Cattle

HEIFER CALF



RIVER HILL EVERY CHANCE 105E - DAM



112

CARMARK *Label Maker* 103L

Homo Polled Homo Black Myostatin Non-Carrier

FEMALE CAN17147-PB
BW: 90 LBS.

CRD 103L

2-FEB-23
PUREBRED

LEGACY BONE CRUSHER 35B
WATSON CRUSHER LONESTAR 11F
PETEMAR LORRETTA 5X

LEGACY UNLEASHED 73U
LEGACY JINGLE 89X
REMIN'S SPECIAL 1L
PETEMAR LOUISE 4M

CODIAK SAILOR BOY GNK 20Y
RIVER HILL EVERY CHANCE 105E
RIVER HILL 50U XIA-CHANCE 105X

CODIAK SPECIAL K CDK 4U
CODIAK WILD LADY GNK 46W
RIVER HILL 68L STRIKER 50U
RIVER HILL TAKE A CHANCE 5T

Label Maker is set to be just that! The Take A Chance 5T lineage is prevalent in my herd appearing in just over half of the pedigrees of my working females. Combining power and balance with proven genetics and style this heifer is ready for the next level.

CONSIGNED BY Carmark

HEIFER CALF



113

MARBLEN *Lydia* 6L

Homo Polled Home Black Myostatin Carrier

FEMALE CAN18655-PB
BW: 84 LBS.

MBN 6L

22-JAN-23
PUREBRED

JSF UNMARKED 2D
MARBLEN JAXON STORM 3J
RIVER HILL COME AWAY W/ME 9C

HS UNTAPPED 3A
JENCREST YAVONNA 6Y
SPOTS 'N SPROUTS ZENITH 106Z
RIVER HILL 64S WYLDA 09W

RIVER HILL 50U ALL IN 60A
RIVER HILL FLEMALLE EXCEL 36F
CODIAK XCEL GNK 36X

RIVER HILL 68L STRIKER 50U
RIVER HILL SHOW ME OFF 60S
C.A.M.Y. TORQUE 03T
CODIAK DEVON'S DELIGHT DKC 48S

Marblen Lydia 6L has been a pasture favourite all year long. Lydia is a very stylish heifer that has lots of depth, thickness and balance. Her All In sired dam is a beautiful big barreled female with a great udder and has been a great producer for us. It's tough to let the best one of the pasture go but we believe in selling our best and think this female will be a great addition to any herd.

CONSIGNED BY Marblen Farms

HEIFER CALF



CALICO CREEK GRAVITATE 23G - DAM



114

TWC *Lipgloss* 07L

EDED, PP and Non-Myo Carrier

FEMALE CAN18859
BW: 82 LBS.

TWC 07L

29-APR-23
PUREBRED

SILVER TIP GREAT LEADER 22G
TWISTED WIRE JIGSAW 02J
CALICO CREEK GINGER 105G

STEELE FRONT RUNNER 5E
SILVER TIP DESERA 41D
INC DINGO 26D
INC BISTRO 5D

LITTLE ACRES ERUPTION 1E
CALICO CREEK GRAVITATE 23G
CALICO CREEK ENCHANTED 22E

P.A.R. CASANOVA 55C
SO SEXY OF P.A.R. 1X
CALICO CREEK BUZZ 1B
CALICO CREEK CALISTA 12C

Twisted wire lipgloss may be a younger heifer in the sale but this girl has it all the looks the style and the cow family to back up her beautiful looks. Her dam calico creek gravitate has turned into one of our top cows and keeps getting better and better every day. Gravitare will be going into our first flush program this coming season. Lipgloss is a spitting image of her dam and we think is going to be even better than her dam and will be one to watch in the future.

CONSIGNED BY Twisted Wire

HEIFER CALF



FLYING DIGGER 4D - SIRE



POTERCREST GOOD LOOKEN 1D - DAM



FULL SIB

115

WILCOX *Good Looken* 17L

Polled, Homo Black, Non-Carrier

FEMALE UNR18831
BW: 86 LBS.

WILC 17L

12-JAN-23
PUREBRED

FLYING E ABNER 4A
FLYING E DIGGER 4D
LEGACY MARY 10M

P.A.R. X-LOG 21X
LEGACY RENA 100R
P.A.R. LOTTO 54F
SPOTS 'N SPROUTS 1D

SILVER TIPS SPECIALITY 19Z
PORTERCREST GOOD LOOKEN 1D
PORTERCREST ANNIE 3A

REMIN'S SPECIAL 1L
JENCREST TANYA 4T
JENCREST TARZAN 3T
UPTO SPECS WYNN 9W

Good Looken is a thick, deep bodied heifer that has a great maternal backing. Her dam is one of our top producing cows. She has an excellent udder, great feet and legs, and an outstanding track record. 17L's sire has left a stamp on his offspring as thick functional cattle. 17L full sister was Reserve Champion Heifer Calf at Agribition in 2019. Here's a heifer that has a bright future.

CONSIGNED BY Wilcox Livestock

HEIFER CALF



MX HIGH VOLTAGE 111H - SIRE



116

FEMALE CAN18482-PB RMS 113L
BW: 82 LBS.

MX DIRTY DEEDS 43D
MX HIGH VOLTAGE 111H
RAINA OF MX 31C

RIVER HILL 12X ZAAR 7Z
RAVENWORTH ASPEN 113D
SPOTS 'N SPROUTS 31A

LIMELIGHT *Of MX* 113L

7-MAR-23
PUREBRED

CODIAK GNK 24X
MELISSA OF P.A.R. 57U
P.A.R. THROTTLE 66T
RAINA OF P.A.R. 54U

CODIAK FIDDLER GNK 12X
RIVER HILL 12U X-ULTRA 07X
SPOTS 'N SPROUTS WAMPUM 102W
SPOTS 'N SPROUTS 12S

Coat colour- EDED Myo- NT821,1 Polled- PP

LimeLight is off of a moderate framed powerful cow with a perfect udder. Her sire is MX HighVoltage that came straight out of pasture to the shows last fall and did fairly well. He is off of Dirty Deeds and out of the famous PAR Raina line who also boost perfect udders and always raise top end power calves.

CONSIGNED BY MX Ranch

HEIFER CALF



LEGACY LIVVIT UP 19H - SIRE



FLEETWOOD ELEANOR 02E - DAM

117

DESERT ACRES *Loretta* 85L

FEMALE CAN17250-PB DA 85L
BW: 94 LBS.

30-JAN-23
PUREBRED

LEGACY BRUCE LIVVIT 163E
LEGACY LIVVIT UP 19H
LEGACY OSTARA 94C

LEGACY DARGBOOG 5C
LEGACY WILLOW 57C
LEGACY BRUTE FORCE 61Y
STAR BANK 34R

CODIAK CRIKEY GNK 13U
FLEETWOOD ELEANOR 02E
SPOTS 'N SPROUTS 7W

RAVEN MEADOWS MAGNUM 10N
CODIAK RKW 07J
RIVER HILL SKIPPER 6S
SPOTS 'N SPROUTS 7T

This heifer is the perfect balance of femininity and power. She comes from a dam with a strong udder score in teat size and placement, great foot and leg structure topped off with a sweet disposition. Her sire gives the outcross genetic advantages as well as depth of body and strength of loin. Loretta definitely reads front pasture on paper and in the flesh.

CONSIGNED BY Desert Acres

BRED HEIFER



118

ANDCHRIS *Kadence* 41K

FEMALE CAN18362-PB ACM 41K
BW: 75 LBS.

6-APR-22
PUREBRED

HS UNTAPPED 3A
ANDCHRIS GUS 15G
COULEE SPRINGS RANCH C3PO 5C

A & W 15R
NOTTA 2R PRETENDER 4T
SPOTS 'N SPROUTS ZINGER 112Z
SPOTS 'N SPROUTS 3P

COLGAN'S BAXTER 1B
WALKERBRAE 92E SHOWOFF 48G
SILVER TIP 15Z 92E

MOOVIN ZPOTZ CAMARO 6X
MOOVIN ZPOTZ ROXY AMBER 4R
REMIN'S SPECIAL 1L
SILVER TIPS UPTOWN GIRL 15Z

A powerful heifer sired by Andchris Gus 15G a son of HS Untapped 3A and Walkerbrae 92E Showoff 48G, a cow we purchased from the Walkerbrae herd sired by Colgan's Baxter 1B
Bred for a February calf to our black bull who goes back to Codiak Oscar. Sure to be a great addition in any herd.

Observed bred on 20/05/2023 to Andchris Black Knight 8K

CONSIGNED BY Andchris Farms

BRED HEIFER



119

UNLIMITEDSPOTS *Koda* 01K

FEMALE CAN16375-PB
BW: 70 LBS.

LAF 01K

2-JAN-23
PUREBRED

RIVER HILL BACKGROUNDER 025B
UNLIMITEDSPOTS GRNWD FUTURE20F
BLACKIE RAINA OF P.A.R. 21Z

RIVER HILL 26T YAGER 99Y
RIVER HILL 64S WHISPER 25W
P.A.R. XCALABAR 6X
RAINA OF P.A.R. 21R

P.A.R. MOO FASSA 03M
RIVER HILL 03M CINDER 15U
RIVER HILL CINDER 5M

P.A.R. KING PIN 1K
ASPEN ACRES 3A
P.A.R. HEMORRHOID 25H
CODIAK PRAIRIE FIRE RKW 05J

Powerful big framed, long bodied female with a lot of style. Sired by Unlimitedspots Grnwd Future 20F and bred elite female River Hill 03M Cinder 15U. If you want add frame to program this female will get the job done.

Bred April 4th to Notta 323F Hashtag 383J (confirmed to AI date) Deer Ridge Ranch (Clayton Elliott) would like to retain 1 future flush at buyers convenience.

CONSIGNED BY Deer Ridge Ranch

Notes:

TERMS: The terms of the sale are cash or cheque, payable at par at the sale location. The right of property shall not pass until after settlement has been made; no invoicing on buyers in attendance unless previous arrangements have been made. Every animal sells to the highest bidder and in cases of disputes, the auctioneer's decision will be final. Announcements from the auction block will take precedence over the printed matter in the catalogue. Current exchange rates will be announced sale day. All monies are in Canadian funds.

CERTIFICATE OF REGISTRATIONS: A certificate of registry duly transferred will be furnished to the buyer for each animal after payment has been made.

HEALTH: All animals in the sale have met all necessary health requirements.

PREGNANCY INFORMATION: All serviceable age females have been pregnancy examined by an accredited veterinarian, giving an estimated length of gestation. This estimated gestation period shall be used only as a guideline to calving and is not a guarantee of actual service.

LIABILITIES: All persons attend the sale at their own risk. The seller, facility owner and sale manager assume no liability legal or otherwise, for any accidents that occur. It is understood that T Bar C Cattle Co. (2013) Ltd. is acting only as a medium between buyer and seller and is not responsible for any failure on the part of either party to live up to his obligations. Neither does T Bar C Cattle Co. (2013) Ltd. assume any financial obligations to collect or enforce collection of any monies between parties and any legal action that may in exceptional cases be taken must be between the buyer and the seller. T Bar C Cattle Co. (2013) Ltd. assumes no responsibility for any credit extended by the seller to the buyer. The buyer must look to the seller for fulfillment of all guarantees and representations made hereunder.

DELIVERY: Assistance will be given in getting your purchases home. Each animal becomes the risk of the purchaser as soon as sold.

PHONE, MAIL, WIRE BIDS: Bidders unable to attend the sale may phone, wire or mail their bids and instructions to the sale manager, auctioneer or special representatives. Bids must be received in sufficient time prior to the sale.

INSURANCE: We strongly recommend that insurance is purchased for full value.

ERRORS: All announcements at sale time, written or oral, supersede any written material in the catalogue.

Return Undeliverable Canadian Addresses To:
T Bar C Cattle Co. Ltd.
Box 2330, Warman, Saskatchewan S0K 4S0

Consignors:

ANDCHRIS FARMS
LOTS: 118

Andrew & Christine Metcalfe
662702 Road 66 RR 3
Ingersoll, ON N5C 3J6
P: 519-285-3675 C: 519-521-8761
andchrisfarms@hotmail.com

CALICO CREEK SPECKLE PARK
LOTS: 101 107

Landon Spokowski
Box 327, Saltcoats, SK S0A 3R0
306-621-7328
landon_spokowski@hotmail.com

CARMARK
LOTS: 112

Carla Ducherer
Box 359, Lashburn SK S0M 1H0
780-870-4401
cducherer@hotmail.com

COLGAN'S CATTLE COMPANY
LOTS: 109 110

**Tony, Tammy, Colton
& Logan Freimark**

Saskatoon, SK
Tony: 306-830-8239
Tammy: 306-830-8787
colganscattle@sasktel.net
facebook.com/colganscattle
www.colganscattle.com

DEER RIDGE RANCH
LOTS: 119

Brandon Kooyman
25303 Township Road 570 Sturgeon County, AB T8R 2N2
P: 780-205-6433
clayton.elliott@dbkgenetics.com

DESERT ACRES
LOTS: 117

Tracey Foster
13987-273 Road Charlie Lake, BC V1J 8K2
P: 205-264-8676
leggs123@outlook.com

MARBLÉN FARMS
LOTS: 113

Brandon Kooyman
5736 Chadsey RD Chilliwack, BC V2R 4P2
P: 604-799-2843
brandonkooyman_10@hotmail.com

HIGHMARK STOCK FARM
LOTS: 108

Harv and Fran Fehr
Box 342, Hague, SK S0K 1X0
306-290-6780
highmark.hf@gmail.com

INC CATTLE COMPANY
LOT: 102

Rob & Janice Harasymchuk
29-602 Cartwright Street
Saskatoon, SK S7T 0M1
C: 306-290-7040 C: 306-260-6200
janiceh@maxies.ca
robh@maxies.ca
www.inccattleco.ca

KFC FARMS LTD.
LOTS: 105 106

Kenneth Friesen
Abbotsford, BC
604-855-0027
ken@fcltd.ca
Ashley Anderson, Farm Manager
C: 250-845-4084
31433 RR 13 Didsbury, AB
info.kfcfarms@gmail.com
www.kfcfarms.com

MX RANCH
LOTS: 116

Max Graham
Box 38, Neilburg, SK
306-823-7209
MXRanch@live.ca



RETURN POSTAGE GUARANTEED
PORT DE RETOUR GARANTI

RAVENWORTH CATTLE
LOT: 103

Garry & Donna Berting
Box 134, Middle Lake, SK S0K 2X0
P: 306-367-2013
C: 306-231-7567
garry@ravenworth.com

RIVER HILL FARM
LOTS: 104

**Barry & Elaine Ducherer
Cory & Katlin**
Box 37, Neilburg, SK S0M 2C0
Barry: 780-205-2478
Cory: 780-870-7584
riverhillfarm@hotmail.com
www.riverhill.ca

TWISTED WIRE
LOTS: 114

Kyle Ward
Box 459, Melville, SK S0A 2P0
P: 306-730-0128
kyle_ward1976@hotmail.com

WILCOX LIVESTOCK
LOTS: 115

**Anthony, Ariel, Emma Daxson
and Cade Wilcox**
Box 297, Treherne, MB R0G 2V0
P: 204-526-0554 C: 204-750-1658
anthony_wilcox8@hotmail.com

WILLOW LANE LAND & CATTLE
LOT: 111

Makenzie Olson
Box 3100, Tisdale, SK CANADA S0E 1T0
P: 306-921-3402
mlolson@hotmail.ca