

THE ALL BREEDS LIVE ONLINE GENETIC SALE

FEBRUARY 15 2025

DLMS

5:00 MST

6:00 CST

7:00 EST

# FEBRUARY FREEZE





# THE BEST YET...

1552 STRAWS OF SEMEN

281 EMBRYOS

6 FLUSHES

2 HERDSIRES

1 DONOR FEMALE

Every year our main goal is to out do the previous year to press only forward and combined the best of the best amongst the 4 breeds to create one of the most popular and well known frozen genetic sales on the planet. To further that we have incorporated a very few limited lots of live cattle that have every upside that the industry can possibly offer. So in short form, we feel it's our best yet, and encourage your participation in this years event.



JR

**HLC CSI ELEVATION 100K**  
2024 CWA Champion Angus Bull



# FEBRUARY FREEZE

FEBRUARY 15 2025 || 5:00 MST 6:00 CST 7:00 EST

## AUCTIONEER

Chris Poley .....306-220-5006

## T BAR C CATTLE CO.

Ben Wright .....519-374-3335

Shane Michelson.....403-363-9973

Levi Rimke .....204-851-4515



## DLMS

Mark Shologan.....780-699-5082



Please register for approved bidding prior to the sale start time, and that your account information (address and phone number) is accurate.

Cover image by Innovation Media



## ANGUS SECTION

pages 4-85

## SIMMENTAL SECTION

pages 86-121

## CHAROLAIS SECTION

pages 122 - 137

## HEREFORD SECTION

pages 138-151

## GENETICS - STORAGE INFORMATION

Listed below are phone numbers for various establishments that the genetics in this sale are stored at. It is the buyers responsibility to be in touch with the seller in order to arrange shipping. Please refer to each Lot for its storage information.

Alta Genetics.....	403-226-0666
DMV GenetiQ Services.....	819-314-8311
Bova-Tech.....	403-332-1567
BoviGen.....	306-339-7673
Boviteq.....	450-774-7949
Bow Valley Genetics (Bassano).....	587-887-1934
Bow Valley Genetics (Regina).....	306-585-1234
Davis-Rairdan Embryo Transplants.....	403-946-4551
DBK Genetics.....	780-205-6433
Eastgen.....	519-821-2150
Embryo Genetics Ltd.....	204-822-3054
Heartland Veterinary Services.....	519-291-2060
Kirkton Veterinary Clinic.....	519-229-8911
Millennium Genetics.....	403-329-0777
Southwest Genetics.....	306-741-8398
Sundown Livestock Transplants Ltd.....	403-637-2589
Trans Ova Genetics.....	712-722-3586

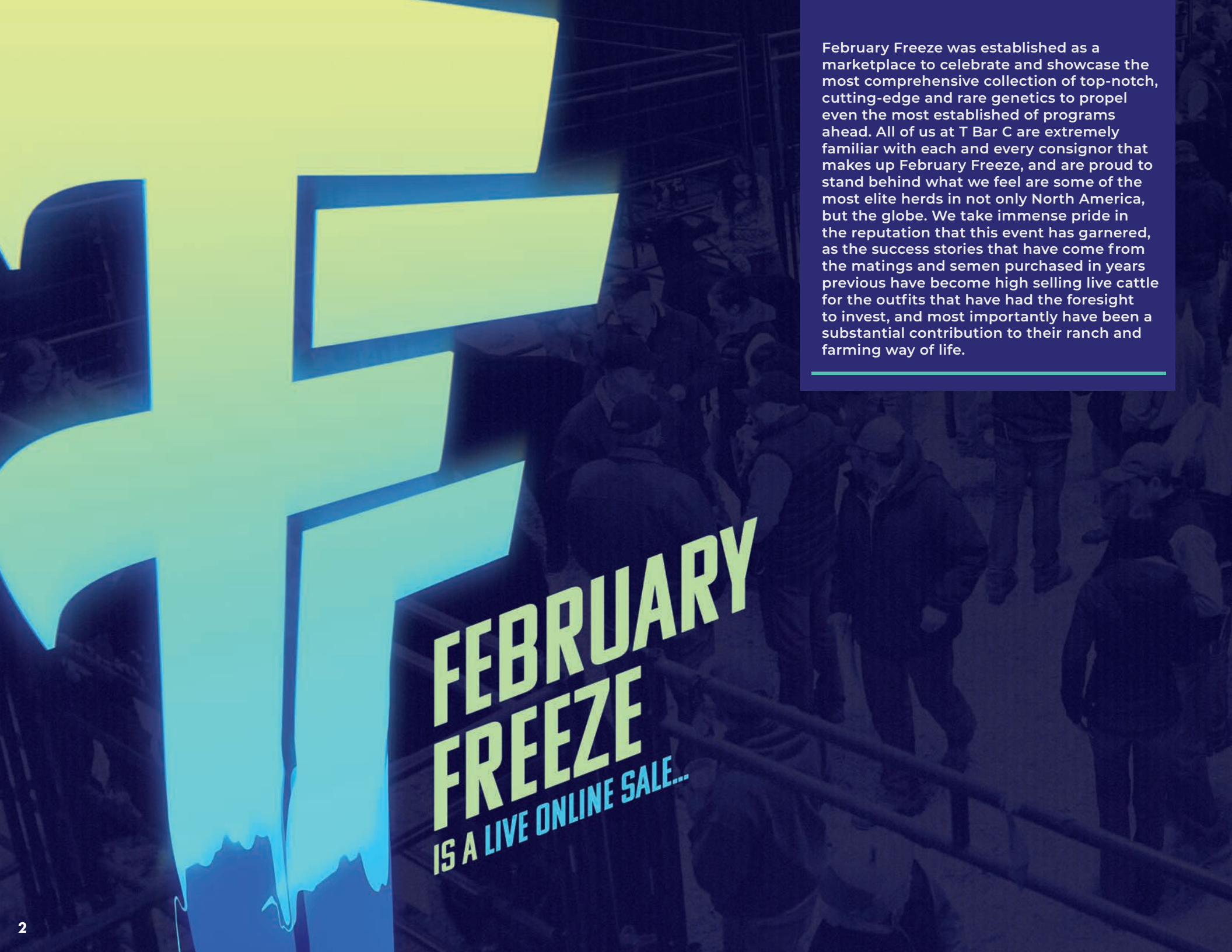
### NOTE

Unless otherwise stated on the specific lot, packages of 2-3 embryos sell with a guarantee of one pregnancy.

Packages of 4-5 sell with a guarantee of two pregnancies.

All guarantees are based upon implantation by a certified technician.





February Freeze was established as a marketplace to celebrate and showcase the most comprehensive collection of top-notch, cutting-edge and rare genetics to propel even the most established of programs ahead. All of us at T Bar C are extremely familiar with each and every consignor that makes up February Freeze, and are proud to stand behind what we feel are some of the most elite herds in not only North America, but the globe. We take immense pride in the reputation that this event has garnered, as the success stories that have come from the matings and semen purchased in years previous have become high selling live cattle for the outfits that have had the foresight to invest, and most importantly have been a substantial contribution to their ranch and farming way of life.

**FEBRUARY  
FREEZE**  
IS A LIVE ONLINE SALE...



# SO KNOW HOW TO BID

**Remember** the Freeze is a **Live** online sale, you'll hear color commentary along with the chant of Chris Poley. The sale will be conducted in catalog order. How to go about your business...

**1**

## **PHONE/TEXT**

Phone or text any of the T Bar team and leave an order with them that will be handled with the upmost professionalism.

**2**

## **BE ON THE PHONE**

Be live on the phone with a T Bar rep while the lot your interested in is selling to bid

**3**

## **BID ONLINE**

Sign in and make account on DLMS and bid over the internet. For assistance on registering and bidding, contact Mark Shologan at 780-699-5082.



**Chris Poley** 306-220-5006



**Shane Michelson** 403-363-9973



**Ben Wright** 519-374-3335



**Levi Rimke** 204-851-4515







## EVERY YEAR, A BETTER SALE

Just like farming & ranching or even more particular breeding cattle, you set out every year to do better and have the best product possible. We take the same approach when putting together genetics for this sale and feel we've exceeded our offering from previous years with an outstanding product for you the buying public to invest in. Freeze is so much more than a regular. The diversity and investment you can make can be so rewarding in quick time with the material made available.

---

# INTRODUCING THE ANGUS DIVISION





CASTS *QUITE A* **SHADOW**





1 Sire Schiefelbein Ponderosa 1122  
2 Dam Peak Dot Lady 101J

3 Mat Grand Sire Musgrave 316 Colossal 137  
4 Mat Great Granddam Lady of Peak Dot 402U



2385291 SCHM 19M FEB 9 2024

**SCHIEFELBEIN PONDEROSA 1122**

Connealy Big Valley X Frosty Elba Lizzy 480

**PEAK DOT LADY 101J**

Musgrave 316 Colossal 137 X Peak Dot Lady 873G

EPD BW 3.1 WW 82 YW 142 MILK 29

PARKVIEW FARMS

PARKVIEW **PINE VALLEY** 19M

**MATURE, THICK & POWERFUL**

We are proud to introduce Pine Valley to the Angus breed. A bull that has stood out since heading to grass in early May compared to his contemporaries that at an early age showed so much maturity, thickness, testicle and herd bull characteristics. Pine Valley has been commented on for having excellent structure, phenomenal headed, frame with power and overall mass that makes standing there looking at him enjoyable. His sire Ponderosa has been very exclusive to the open public with only 40 units of semen sold within 18 months fetching an avg of \$745 per straw. Ponderosa noted to for his power and quoted as the thickest Angus bull living after he commanded a \$86,000 USD sale price from the 2022 Scheilfebein Bull Sale. A very respectful breeder once told me, never buy a breeder bull without researching and looking over the mother. Pine Valleys mother has all the attributes of a model Angus female. As you can see in her picture on grass in August before weaning Pine Valley, her udder, stature, body and phenotype is outstanding in our opinion and at a young age with maternal lineage back to the famed Lady of Peak Dot 402U who has 72 direct progeny. Pine Valley cast quite a shadow, his numbers are also another bonus with modest BW to top 1% WW and top 2% YW and top 8% Milk. Pine Valley is located at Jordan Buba's place if your wanting to view him in the flesh with plans of him heading over to Alta mid February.

**Selling 3/4 Interest & Full possession**





**PINE VALLEYS**

***Mother...***





**FF**  
**LOT 1A**

2204179 PDAR 101J JAN 22 2021

**MUSGRAVE 316 COLOSSAL 137**

LD Capitalist 316 X Musgrave Lady Barbara 545

**PEAK DOT LADY 873G**

Ellingson Rider Pride 7282 X Lady Of Peak Dot 402U

EPD BW 1.3 WW 71 YW 120 MILK 26

**PARKVIEW FARMS**

**FLUSH PEAK DOT LADY 101J**

**SELLING A FLUSH ON THIS MATERNAL HEADLINER**

When touring the pastures all summer Lady 101J and her calf Pine Valley were always so easy to find. Weaning off Pine Valley at 900 lbs and maintain the body condition and superb udder quality simply on grass is a breeders dream. Lady 101J came as a headliner from the highly regarded Peak Dot program and hasn't looked back since. Due to calve by the end of January with plans to implement her into our ET program, we felt selling the right to flush was easier then letting the sales manager have their way and sell her all. Lady 101J has everything going for her. Young, gorgeous phenotype, strong EPD profile and of course the mother of Pine Valley. A female that is destined for big things, worth considering if your in the business of putting in eggs this spring. Offering the right to Flush to the sire of your choice.

**Guaranteeing 6 Embryos with an open top.**

- 1 Son Parkview Pine Valley 19M
- 2 Sire Musgrave 316 Colossal 137
- 3 Mat Brother Peak Dot Gable 98L
- 4 Grand Dam Lady of Peak Dot 402U







# PEAK DOT **ROSILLA** 378K

UNMATCHED IN FEMININITY, SHAPE, FEET, AND UDDER QUALITY...

This female has struck a chord with all that have seen and studied her in person.

Regarded as the best female ever bred and raised at Peak Dot and known as the maternal sister to "The Great Gatsby". Rosilla 378K is unmatched in femininity, body shape, feet and udder quality. She certainly has the maternal look and presence to anchor a future donor program. The apple doesn't fall far from the tree her impressive dam is a fertile proven producer and an Elite/Premier Dam with an average weaning ratio of 107 on her last 6 calves. She is the dam of Gatsby and was the featured high selling cow in last years Freeze sale to JP Cattle Co.

Rosilla 378K did such a good job on her first attempt with Halo that we went right back and mated her to Raven Rectify again, She is due to calve March 3.

*Selling full interest and full possession.*



- 1 Maternal Brother "The Great Gatsby"
- 2 Service Sire Raven Rectify J156
- 3 Dam Peak Dot Rosilla 117E
- 4 Son Peak Dot Halo 184M



2256916 PDAR 378K FEB 25 2022

**SCHIEFELBEIN ATTRACTIVE 4565**

JMB Traction 292 X Frosty Answer 3979

**PEAK DOT ROSILLA 117E**

S A V Seedstock 4838 X Peak Dot Rosilla 377C

EPD BW 3.1 WW 67 YW 115 MILK 36

PEAK DOT





**ONE HELL OF A PACKAGE**



# PEAK DOT **HALO** 184M

## MAJOR SALE ATTRACTION; EXCEPTIONAL

Halo presents authentic angus bred character with incredible thickness, muscle shape, capacity and soundness. Nice headed with an exceptional hair coat, added bone and great feet. This calf is big topped-wide pinned and comes with excellent scrotal development. Halo is a low birth weight bull that comes with a stacked pedigree and performance numbers that run off the

charts ranking in the very top 1% for weaning weight and yearling weight EPD. He also ranks right near the top for heifer pregnancy rate and milk EPD. He

is a heifers first calf and weaned off at 885lbs in September. They say behind every great bull there are outstanding females and that is certainly the case here.

His dam is a maternal sister to "The Great Gatsby" the \$140,000 valued Gable son that sold in last years Freeze Sale. She is a herd favorite and has been analyzed and regarded by several who toured the cowherd this past year as the best female they have ever seen. She is

unmatched in femininity, body shape, feet and udder quality. Certainly one of the best that we

have ever raised here at Peak Dot. Halo maternal grandam is a fertile proven producer and an Elite/Premier Dam with an average weaning ratio of 107 on her last 6 calves. She is also the dam of Gatsby and was the featured high selling cow in last years

Freeze sale to JP Cattle Co.

*Selling 1/2 interest and 1/2 possession in Peak Dot Halo*

## BOASTING SUPERIOR TRAITS INCLUDING

- CALVING-EASE ✓
- PERFORMANCE ✓
- MATERNAL STRENGTH ✓
- PHENOTYPE ✓
- SMOKING NUMBERS ✓



**LOT 2A**

2358172 PDAR 184M FEB 26 2024

### **RAVEN RECTIFY J156**

Sitz Stellar 726D X Raven Blackbird H403

### **PEAK DOT ROSILLA 378K**

Schiefelbein Attractive 4565 X Peak Dot Rosilla 117E

EPD BW 0.1 WW 83 YW 147 MILK 32

PEAK DOT





# EMBRYOS PEAK DOT **ROSILLA** 117E

## EMBRYOS FROM THE FAMED MOTHER OF GATSBY

Noted as one of the most high producing females ever to come out of the Peak Dot program, 117E is a graduate of Feb Freeze and is best known for being the mother of the \$140,000 valued Gatsby and also the mother of the lot 2 female in this very sale. This maternal giant is an elite/premier dam with a large weaning ratio that ties power and production into one. The sires made available to her are as fresh and proven as you can obtain in the breed today.

1 \$140,000 Son Gatsby



**LOT 3A-D**  
**EMBRYOS**

1967465 PDAR 117E FEB 6 2017

**S A V SEEDSTOCK 4838**

S A V Registry 2831 X S A V Blackcap May 4136

**PEAK DOT ROSILLA 377C**

Peak Dot Universal 551A X Rosilla Of Peak Dot 644U

EPD BW 3.0 WW 54 YW 93 MILK 30

JP CATTLE CO.



**FF**  
**LOT 3A**

3 EMBRYOS

**HF HI-COUNTRY 7L**

Ellingson Hi-Range X HF Tibbie 21J

Stored at **BOVIGEN**



**FF**  
**LOT 3B**

3 EMBRYOS

**SCHIEFELBEIN GABLE 311**

Sitz Resilient 10208 X Frosty Elba Lizzy 5569

Stored at **BOVIGEN**



**FF**  
**LOT 3C**

3 SEXED EMBRYOS

**ELLINGSON PROLIFIC**

Ellingson Profound 8155 X EA Queen 8070

Stored at **BOVIGEN**



**FF**  
**LOT 3D**

3 SEXED EMBRYOS

**S A V NET WORTH 4200**

S A V 8180 Traveler 004 X S A V May 2410

Stored at **BOVIGEN**



1 Grand Son Peak Dot Halo 184M  
2 Daughter Sells as Lot 2  
3 Son Selling at JP Bull Sale Feb 27 2025









**YOUR CHANCE TO HAVE A PIECE OF THE EXCITEMENT**

# SEMEN **LT MARQUEE** 169L

## THE \$1.4 MILLION TALK OF THE INDUSTRY!

You don't need a cell phone or any sort of social media access to know what's been going on at OKC and the National Western Stock Show with LT Marquee. He started out being the all time high seller in the history of Embryos on Snow in OKC, then one week later we were thrilled to capture the Canadian semen rights on him. A bull that is so right for today's times, his hind leg, presence and stature have captivated cattle people who have saw him. His pedigree is different for most and has been widely accepted in the US with his \$1.4 million evaluation. Stemming from the legendary Bar EL program the story only gets better. The Duchess cow family is course responsible for Marquee, but also the same cow family as notable sire Natural Law who many have declared as the best Canadian bull bred north of the 49th. Go even further as many of you know , Natural Law being the sire of the famous Erica 74A who continues to write history in every sector. His sire Investment has been a popular AI sire whose semen has been very popular with progeny surfacing to the top. In short Marquee has the ingredients, the pedigree and hype to be the next best thing that happens to Angus cattle on the North American continent. **Semen available mid March**

Stored at ALTA GENETICS

**This is the first offering of Marquee's semen in Canada  
- An elite opportunity begins here -**

- |                        |                        |                        |
|------------------------|------------------------|------------------------|
| <b>LOT 4A</b> 5 Straws | <b>LOT 4F</b> 5 Straws | <b>LOT 4K</b> 5 Straws |
| <b>LOT 4B</b> 5 Straws | <b>LOT 4G</b> 5 Straws | <b>LOT 4L</b> 5 Straws |
| <b>LOT 4C</b> 5 Straws | <b>LOT 4H</b> 5 Straws | <b>LOT 4M</b> 5 Straws |
| <b>LOT 4D</b> 5 Straws | <b>LOT 4I</b> 5 Straws | <b>LOT 4N</b> 5 Straws |
| <b>LOT 4E</b> 5 Straws | <b>LOT 4J</b> 5 Straws | <b>LOT 4O</b> 5 Straws |

- 1 Paternal Grand Dam, Merit Flora 6078, Owned by Merit Cattle
- 2 Maternal Grand Dam Bar-E-L Duchess 76G , owned by Murray Ranches
- 3 Sire Merit Investment 1054J, owned by Murray Ranches & 66 Ranches
- 4 Son Murray Reverence 12M, Son of Bar-E-L 76G



**LOT 4A-0**

**2335463 LTR 169L MAR 29 2023 SEMEN**

**MERIT INVESTMENT 1054J**

U-2 Coalition 206C X Merit Flora 6078D

**BAR-E-L DUCHESS 169J**

Peak Dot Topsoil 355G X Bar-E-L Duchess 76G

EPD BW 4.4 WW 72 YW 119 MILK 21

**BAR-E-L ANGUS, GRAND RIVER ANGUS  
MURRAY RANCHES**





Katie Jensen  
top stock



# EMBRYOS U2 **ROSEBUD** 157C

## FLAWLESS PHENOTYPE, BEAUTIFUL UDDER

Coming from the heart of our program, we could not be prouder and more confident in a consignment lot. We present you the first ever embryos to sell on auction by the legendary \$70,000 U2 ROSEBUD 157C. A beyond impressive matron who has earned her way to becoming one of the top world-class donors you will find anywhere. She is backed by three generations of never-miss Rosebud donor cows. No matter the mating, their potency succeeds; top sons of 157C include the \$290,000 U2 Shameless 145G, \$70,000 U2Q Powerline 2307K, and \$98,000 SSS Duece 2H, with her first daughter bringing \$52,500 in 2019. Full and maternal sibs have also topped multiple previous U2/U2Q bull sales, as well this past fall with her Hi-Range heifer calves averaged \$23,000. To top it off her combination of feminine style in a massive broody body pattern coupled with near perfect teat placement, extreme fertility and ability to transmit her +9.0 CE make her an invaluable herd-building tool! Buy with confidence.

*All embryos are CAD and USA qualified.*

3 EMBRYOS **LOT 5A-B**  
**EMBRYOS**

1837819 DUA 157C JAN 20 2015  
**HF SYNDICATE 213Z**  
Connealy Consensus 7229 X HF Miss Blackcap 27R

**U2 ROSEBUD 381Z**  
MWC Tom Boy 121U X MWC Rosebud 141T

EPD BW 1.3 WW 39 YW 77 MILK 25

**U2 QUALITY SEEDSTOCK**





- 1 \$290,000 Son of 157C U2 Shameless 145G
- 2 \$70,000 Son of 157C U2Q Powerline 2307K
- 3 \$52,500 Daughter of 157C U2 Rosebud 1F
- 4 \$98,000 Son of 157C SSS Duece 2H
- 5 \$20,000 Son of 157C U2Q Walk The Line 2316K
- 6 \$20,000 Full Sib to 157C U2Q Don Juan 2362K

## ROSEBUD 157C EGGS SELL



### **LOT 5A** 3 SEXED FEMALE EMBRYOS

EMBRYO LOT X S A V RENOWN 3439

#### **S A V RENOWN 3439**

Rito 707 of Ideal 3407 7075 X S A V Blackcap May 4136

Stored at **BOVA-TECH, AB**

**U2 QUALITY SEEDSTOCK**

### **LOT 5B** 3 SEXED FEMALE EMBRYOS

EMBRYO LOT X BC ROBUST 0807

#### **BC ROBUST 0807**

BC Surveyor 680D X BC 327-8 CP Belle 0-807

Stored at **BOVA-TECH, AB**

**U2 QUALITY SEEDSTOCK**





WHAT THE INDUSTRY **CRAVES**



# SEMEN HF **HI-COUNTRY** 7L

## INDUSTRY INFLUENCER...

Today's industry craves a low birth weight, problem free sire with explosive performance, impeccable feet, massive thickness, and an elite standard of phenotype and genotype out of a productive, beautiful, eye appealing cow. Hi-Country has the credentials to headline any breeding program in the industry. Over the last 10 months we have seen some of the most influential individuals and big name programs from all across North America inquire and invest in Hi-Country. Hi-Country is defiantly on everyone's radar and well on his way to become that next generation Angus sire sure to have a huge impact on the Angus breed. Early calving reports have legitimized him as a consistent low birth early gestations sire. There has never been a time better than now to invest in an AI sire that can offer so much to the breed without sacrificing a single trait. This will be your only chance in the year 2025 to acquire Hi-Country semen as we are only offering a very limited amount, 50 straws. Take advantage of this special opportunity. His progeny are sure to be highly marketable in the near future.

## The last semen to be offered of the 2025 breeding season!

Stored at ALTA GENETICS

**LOT 6A** 5 Straws **LOT 6F** 5 Straws

**LOT 6B** 5 Straws **LOT 6G** 5 Straws

**LOT 6C** 5 Straws **LOT 6H** 5 Straws

**LOT 6D** 5 Straws **LOT 6I** 5 Straws

**LOT 6E** 5 Straws **LOT 6J** 5 Straws



# LOT 6A-J

2338468 HAMI 7L JAN 2 2023

## **ELLINGSON HI-RANGE**

Ellingson Rangeland X EA Emblynette 9473

## **HF TIBBIE 21J**

Schiefelbein Showman 338 X HF Tibbie 215B

EPD BW -1.1 WW 83 YW 142 MILK 33

STRONGBOW, RIVER VALLEY, PEAK DOT, HAMILTON





RH

8 NOV 03



# HF **TIBBIE** 205F

2035234 HAMI 205F FEB 3 2018

## HF STORM CENTER 26D

Musgrave Big Sky X HF Miss Blackcap 296Y

## HF TIBBIE 14D

HF Who's That 7A X HF Tibbie 77Z

EPD BW 2.0 WW 61 YW 111 MILK 25

### HER PROGENY HAVE BEEN RECORD SETTING AT OUR SALES

205F has become an anchor here at Hamilton Farms and being a household name within the industry. Maternal brothers at Bar EL / Cowtrax \$30,000, another at \$40,000 to Minert-Simonson in Nebraska let alone her own efforts recently at MWC with a daughter commanding \$31,000 to Golden Oak and another daughter at \$17,000 to 66 Ranch. Her sheer power and immaculate body mass with excellent udder quality are often commented on. Matched to the talk of the industry Hi Country and of course Hi Range who's offspring set records at our annual sale this past spring. A prime mating from the top of our program.

- 1 205F Daughter HF Tibbie 224J
- 2 HAMI 205F with calf, who sold for \$36 000 in Collection 2021



### **LOT 7** 3 EMBRYOS

EMBRYO LOT X HF HI-COUNTRY 7L

## HF HI-COUNTRY 7L

Ellingson Hi-Range X HF Tibbie 21J

Stored at DRI

HAMILTON FARMS

### **LOT 7A** 3 EMBRYOS

EMBRYO LOT X ELLINGSON HI-RANGE

## ELLINGSON HI-RANGE

Ellingson Rangeland X EA Emblynette 9473

Stored at DRI

HAMILTON FARMS



4382 has become a cornerstone of Angus cattle. Her production record speaks volumes especially in the last two years. The udder quality and phenotype she transmits is like a front row seat at a Lainey Wilson concert. No matter where her offspring become available, some of the most respected cattlemen on planet earth line up to buy them. Her daughter 54J was the high selling Angus female in Canada this past year at \$140,000 via the AAC sale. The sought after genetics she has created are only available here in Freeze '24.



# **KR LADY MAY 4382** **JUST KEEPS**



Daughter - JJH Lady May 1J



W-C

Daughter - Rail Line Lady May 3H





Daughter - Rail Line Lady May 1H



Daughter - Harprey LM Lady May 7K



Son - Harprey LM Payweight 20K

# DOING IT



Daughter - Bandura Miss 4382 Lady May 54J



Daughter - Bandura Miss 4382 Lady May 54J





W-C

THE RIGHT TO FLUSH THE **HIGHEST SELLING** FEMALE OF 2024





FLUSH

LOT 8

2217731 BAN 54J FEB 4 2021

**MOHNEN GENERAL 548**

Baldrige Colonel C251 X S A V Madame Pride 5290

**KR LADY MAY 4382**

K R Gavel 1057 X WK Lady May 2347

EPD BW 2.9 WW 77 YW 131 MILK 31

RIVER VALLEY CATTLE CO.

1 Daughter at Elmbank

**BANDURA MISS 4382**

# LADY MAY 54J

THE RIGHT TO FLUSH THE HIGH SELLING FEMALE IN CANADA OF 2024



The wait is over. After multiple requests here is the AAC & top selling Female of Canada in 2024. Lady May 54J has a huge fan base across the North American continent as anyone who has followed Feb Freeze knows the history around this elegant female. Of course being mothered by the famed 4382 only enhances the popularity of 54J. The sheer power and land base 54J possesses is like none other. Phenomenal udder quality with big huge feet and more than adequate frame all tied together in an appearance ready for even the Queen herself. As a 2 year old 54J's flush record was outstanding with her average being in the high teens. She is currently due end of Feb and will be ready to go mid April. Her first daughter was a feature at Fallsvie' 23 to Elmbank, while her 2024 effort by Ponderosa resides with her here at RV. A centerpiece to our Angus division, let 54J be in your 2025 breeding plans. **Guaranteeing 6 Grade A eggs with an open top.**

## LADY MAY 54J EGGS SELL



**LOT 8A** 3 EMBRYOS

EMBRYO LOT X S A V NET WORTH 4200

**S A V NET WORTH 4200**

S A V 8180 Traveler 004 X S A V May 2410

Stored at **BOW VALLEY GENETICS**

JIMMY JOE HENDERSON

**LOT 8B** 3 EMBRYOS

EMBRYO LOT X SCHIEFELBEIN PONDEROSA

**SCHIEFELBEIN PONDEROSA 1122**

Connealy Big Valley X Frosty Elba Lizzy 480

Stored at **BOW VALLEY GENETICS**

LYNDEN MANOR





*Kate Roberts*





FLUSH

LOT 9

2132185 IMP 4382B FEB 14 2014

**K R GAVEL 1057**

Pine Ridge Hammer S322 X WK Miss 6191

**WK LADY MAY 2347**

Koupals B&B Identity X Thoene Traveler 004-563

EPD BW 3.2 WW 65 YW 125 MILK 33

JIMMY JOE HENDERSON

# FLUSH KR **LADY MAY** 4382

## SELLING THE RIGHT TO FLUSH THE MATRON HERSELF!

Guarenteeing 6 Grade A Embryos with an open top.



## LADY MAY 4382 EGGS SELL



2 PACKS OF 3 EMBRYOS

LOT 9A-B

**BALDRIDGE BADGER**

Hoover No Doubt X Baldrige Isabel Y69

LOT 9A 3 EMBRYOS

LOT 9B 3 EMBRYOS

JIMMY JOE HENDERSON

Stored at **SUNDOWN LIVESTOCK TRANSPLANTS**

### KR LADY MAY 4382 & BALDRIDGE BADGER COULD BE THE BEST MATING TO DATE

The extra muscle and sound Structure of Baldrige Badger crossed with kR Lady May 4382's style and class along with her perfect udder balanced EPDS makes for a great recipe for success.

Kr Lady May 4382 was the top selling female in the 2018 Krebs angus cowherd Dispersal at \$50,000 .

The same day a daughter brought \$30,000.

The next year she produced the lead off bull in 2019 Denver stock Show car load bull show for Krebs angus Ranch.

Over the last 6 Years KR Lady May 4382 has produced 45 Registered progeny in Canadian Angus herd book and some of those progeny topped many Canadian angus sales with one daughter topping out at \$142,000.

40 progeny also have been Registered in the American Angus Herd book and progeny are Registered in Australia Angus herd book with more to come.

To date we have sold 150 embryos and have averaged \$2,000 per embryo.

Here is a great opportunity to flush to the bull of your choice as she is known to produce a good number of embryos per flush .

kR Lady May 4382 has generated close to a million dollars worth of progeny in Canada, United States and Australia.

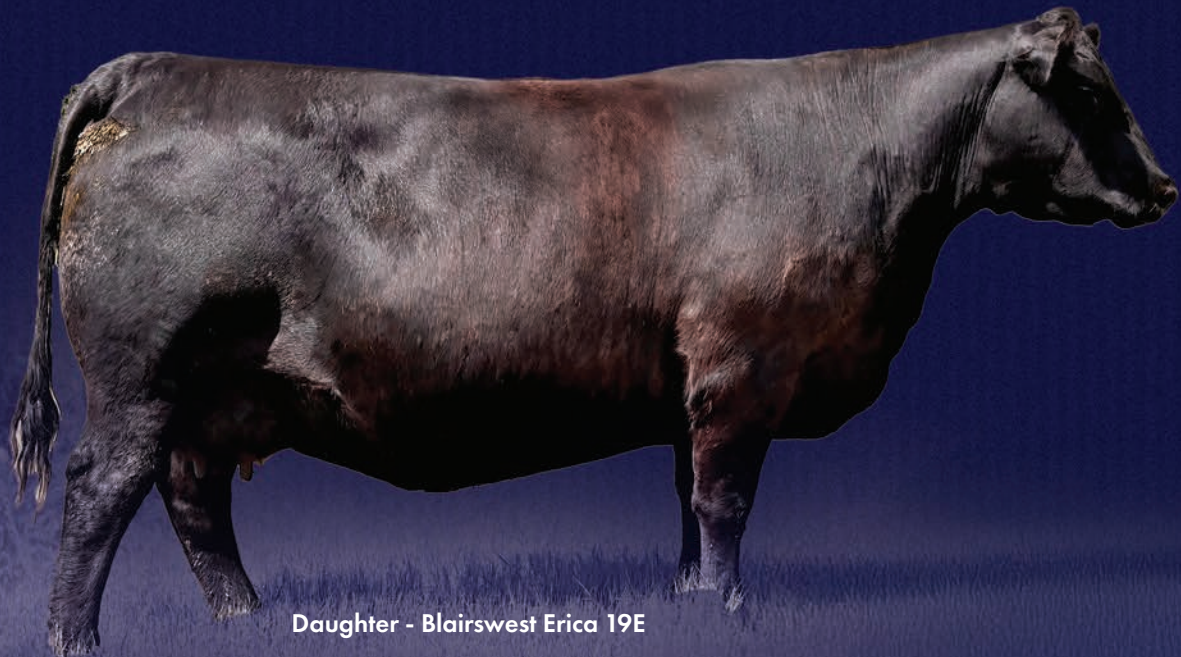
**KR Lady May 4382 has the ability to produce the next great one!**



## BAR-E-L ERICA 74A

Where to start with 74A? Will their ever be a Canadian bred female that does half as much as 74A has? Her track record is unmatched to any and for reassurance she broke a Canadian record at Agribition when the right to flush commanded a \$72,500 sale price. Then just a mere 3 weeks later a daughter sold at Golden Oak for \$67,500 for ½ interest. 3 days prior to that Blairswest sold a heifer for \$54,000. It just never seems to end with her progeny topping literally every sale across the continent. Keep in mind Erica 74A is getting up there in age and Wayne at Grand River wont be letting to many more eggs available. Study her influence in Freeze '25... it will be something to have.

# MOST DECORATED FEMALE



Daughter - Blairswest Erica 19E



# BAR-E-L ERICA 74A



Son - Blairs Martial Law 593E

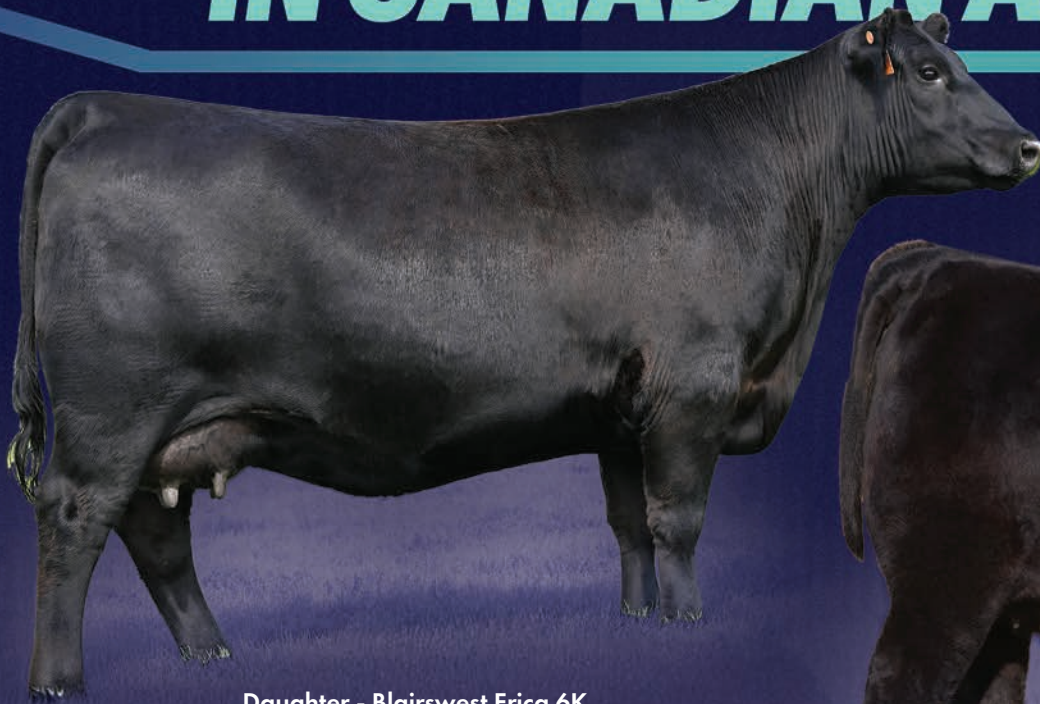


Son - Haroldson's AH Legend ET 36L



Daughter - Blairswest Erica 22M

## IN CANADIAN ANGUS HISTORY



Daughter - Blairswest Erica 6K



Daughter - HLC CSI Erica 200L







# BAR-E-L ERICA 74A

1745491 YHB 74A FEB 19 2013

## BAR-E-L NATURAL LAW 52Y

S A V Bismarck 5682 X Bar-E-L Magnolia 143K

## HF ERICA 339T

Peak Dot Fame 2N X HF Erica 46P

EPD BW 3.1 WW 63 YW 107 MILK 31

### A FEMALE THAT WILL BE CELEBRATED FOR GENERATIONS

The most acclaimed female in Canadian history, the chances of obtaining her genetics direct are going to be getting harder and harder to obtain. 74A gets peoples attention, excited and energized as she literally can take a program on her back and carry you to the forefront. Whether it be a female or son she just gets it done. Her mating to Prolific comes highly recommended as he has become the go to sire who covers all the bases with a son called Bedrock being at the top of the most wanted sires to use in the USA. If you never have had a 74A progeny in your yard buy these, if you have already add another. They only grow into money.

### LOT 10A 3 EMBRYOS

EMBRYO LOT X PROLIFIC

### ELLINGSON PROLIFIC

Ellingson Profound 8155 X EA Queen 8070

### LOT 10B 3 EMBRYOS

EMBRYO LOT X PROLIFIC

### ELLINGSON PROLIFIC

Ellingson Profound 8155 X EA Queen 8070

### GRAND RIVER ANGUS

Lots 10A 10B Stored at **TRANSOVA EXPORTABLE**



# BAR-E-L NATURAL LAW 52Y

## LOT 10C

1629829 DBR 52Y FEB 18 2011

## S A V BISMARCK 5682

G A R Grid Maker X S A V Abigale 0451

## BAR-E-L MAGNOLIA 143K

Bar-E-L MCC 365 Icon 20H X Double Four Duchess 12G

EPD BW 3.1 WW 56 YW 105 MILK 22

2 UNITS SEMEN

Stored at **ON THE FARM**

ELLSMERE FARMS LTD

# EMBRYOS

## X ELLINGSON PROLIFIC







A PEDIGREE OF ANGUS **HISTORY**



# SEMEN HAROLDSON'S AH **ALPINE** ET 271L

## THE TALK OF CWA '23

No calf in sometime gathered as much attention and noise as Alpine did last year at CWA. His hair, structure and natural muscle shape let alone his impressive paperwork are only some of his attributes. Once he fetched a \$118,000 sale price the fan base only grew with multiple requests for semen from critical breeders. The only semen ever offered was Freeze '24 where 6 units brought a whopping \$1800 per unit. In our opinion Alpine is the next up and comer. He comprises so many positive attributes as any bull weve around in some time. Perfect hind leg, big backed, incredible softness and just dam good lookin from every position. Early reports on calves coming are easy and loads of vigour. Add Alpine to increase your bottom line and boast serious marketable cattle.

Stored at **BOVIGEN GENETICS**

<b>LOT 11A</b>	5 Straws	<b>LOT 11F</b>	5 Straws
<b>LOT 11B</b>	5 Straws	<b>LOT 11G</b>	5 Straws
<b>LOT 11C</b>	5 Straws	<b>LOT 11H</b>	5 Straws
<b>LOT 11D</b>	5 Straws	<b>LOT 11I</b>	5 Straws
<b>LOT 11E</b>	5 Straws	<b>LOT 11J</b>	5 Straws

1 Sire Hummel Palermo SA  
 2 Full Sister: Clair Lane 74A Erica 2302  
 3 Alpine as a calf



**FF**  
**LOT 11A-J**

2343533 AFSY 271L FEB 18 2023

### HUMMEL PALERMO SA

Don Aparicio Serrucho 57 Maxl X Fontana Rubette 7567-T/E

### BAR-E-L ERICA 74A

BAR-E-L Natural Law 52Y X HF Erica 339T

PE BW 1.4 WW 65 YW 109 MILK 21

ELK RIDGE FARMS & HAROLDSONS CATTLE CO.





**FF**  
**LOT 12**  
**EMBRYOS**

# HLC **ERICA** 561G EMBRYOS

## STRONG MATERNAL VALUES IN THIS MATING

Here is your opportunity to grab a hold of some of the top genetics in the Angus breed. Erica 561G has proven to be a top producing direct daughter of Bar-E-L Erica 74A, one of North America's most influential females. Ellingson Prolific was the top seller from the 2022 Ellingson Sale. He bring an outcross pedigree with strong maternal values. He has developed a reputation for early growth and ideal foot and under quality. We are offering 3 IVF embryos produced at Trans Ova in Onida and stored at Bow Valley Genetics.

**Qualified for USA and Canada.** Stored at **BOW VALLEY GENETICS**

- 1 561G Daughter HLC CSI Erica 354M
- 2 Sire of Embryos Ellingson Prolific

3 EMBRYOS

EMBRYO LOT PROLIFIC X ERICA 561G

### ELLINGSON PROLIFIC

Ellingson Profound 8155 X EA Queen 8070

### HLC ERICA 561G

S A V National Anthem 5740 X Bar-E-L Erica 74A

PE BW 3.6 WW 71 YW 116 MILK 22

CSI ANGUS & HOLLINGER





1 HLC CSI Elevation 100K at CWA 2024



1



# HLC CSI **ELEVATION** 100K

Stored at BOVIGEN

He has been the talk of the town, with a show record others could only dream of! Here is an opportunity to acquire semen on the one and only, 2024 Canadian Western Agribition Champion Angus Bull, Elevation 100k. He is one of the most highly decorated bulls in recent history that combines, power and performance, mass and shape with an exceptional look and flawless structure. After an overwhelming amount of interest from both Canada and the United States, the decision was made to offer Elevation for sale. Full Possession along with the US Semen Rights were consigned to The Foundation Angus Sale at the National Western Stock Show in Denver Colorado. On Thursday Jan. 16 2025, Elevation became the high selling lot in the sale, commanding \$52,500 US (\$76,000 CAD) he was purchased by Circle F Farms in Baxley, Georgia. We are very excited to see Elevation head to his new home, and can't wait to see the impact he will have on their program and many others, as semen will be sold through out the United States. We are very excited for his up and coming calf crop and believe he will have a place in our breeding program for years to come. He combines some of the most powerful and influential cow families in the Angus Breed. His maternal grand dam being none other than the most popular female in the Angus breed today, Bar EL Erica 74a. His paternal grand dam is one of Schaff's most prolific donors, SAV Emblynnette 2369. She is the dam of SAV Theory 2914, SAV Emblem 8074, SAV Ajax 8885, and SAV Rise and Shine 2704 and of course SAV Bloodline 9578. Elevation is the real deal! Don't miss this opportunity!

- |                |          |                |          |
|----------------|----------|----------------|----------|
| <b>LOT 13A</b> | 5 Straws | <b>LOT 13F</b> | 5 Straws |
| <b>LOT 13B</b> | 5 Straws | <b>LOT 13G</b> | 5 Straws |
| <b>LOT 13C</b> | 5 Straws | <b>LOT 13H</b> | 5 Straws |
| <b>LOT 13D</b> | 5 Straws | <b>LOT 13I</b> | 5 Straws |
| <b>LOT 13E</b> | 5 Straws | <b>LOT 13J</b> | 5 Straws |

## LOT 13A-J SEMEN

2261490 CHD 100K FEB 5 2022  
**SAV BLOODLINE 9578**  
 SAV A V Rainfall 6846 X SAV Emblynnette 2369

**HLC ERICA 561G**  
 SAV National Anthem 5740 X Bar-E-L Erica 74A  
 EPD BW 4.1 WW 67 YW 114 MILK 31

**HOLLINGER LAND & CATTLE/RAFTER D4/ CSI**





**HAROLDSON'S AH ALPINE ET 271L**





3 EMBRYOS

EMBRYO LOT ALPINE X FLORA 6078D

**HAROLDSON'S AH ALPINE ET 271L**

Hummel Palermo SA X Bar-E-L Erica 74A

**MERIT FLORA 6078D**

Bar S Range Boss 4002 X Merit Flora 4120



1

1 Flora Son Merit Investment 1054J

ELKRIDGE



**EMBRYOS OFF A SACRED FEMALE**

Flora 6078D is the ultimate female and regarded as a sacred female from the well known Merit Cattle. 14 direct sons have avg in excess of \$22,000 per with the popular Investment bull being one of her best efforts. No matter where you are and here about a Flora your attention perks to their spotlight. This intriguing mating to the popular Alpine would only suggest highly demanded offspring. We call this combo the driver seat of the Angus business today!

Stored at **BOVIGEN**



3 EMBRYOS

EMBRYO LOT ALPINE X FLORA 6078D

**HAROLDSON'S AH ALPINE ET 271L**

Hummel Palermo SA X Bar-E-L Erica 74A

**CUDDY BARBARA 207H**

Musgrave 316 Stunner X JL Barbara 3204



2

2 207H Daughter sired by Gable

ELKRIDGE



**FLAWLESS UDDER AND IMPECCABLE STYLE**

Barbara was the \$84,000 AAC 23 high seller that we bought a flush on in the Spring Thaw sale last spring. Her impressive EPD chart and being outcross to many pedigrees being a direct Stunner female that have surfaced to the forefront when they become available. What really sold us on 7H was her incredible daughter she at side last year by Gable. Flawless udder and impeccable style while being so broad based, this mating has to click.

Stored at **BOVIGEN**





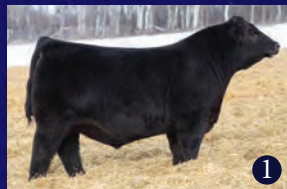
**PEAK DOT** **LADY** **1017G EMBRYOS**

1 Embryo's Sire Haroldson's Legend 36L

**WHEN A LADY MEETS A LEGEND...**

Peak Dot Lady 1017G is a real breeding piece with a captivating pedigree backed by generations of females with exquisite femininity, abundant milk and powerful phenotype. Her dam is the popular Lady of Peak Dot 274Z donor who has 14 progeny. This is a great mating here to Haroldson's Legend and it will leave some highly productive females with the right look, body type, and the maternal ancestry to work in any program.

Stored at **BOVIGEN**



**F**  
**LOT 15**  
**EMBRYOS**

3 SEXED FEMALE EMBRYOS

EMBRYO LOT LEGEND X LADY 1017G

**HAROLDSON'S AH LEGEND ET 36L**

Hummel South America X Bar-E-L Erica 74A

**PEAK DOT LADY 1017G**

Ellingson Profound 8155 X Lady Of Peak Dot 274Z

PE BW 2.5 WW 61 YW 106 MILK 20

**PEAK DOT RANCH**





1 Embryo's Sire Haroldson's Legend 36L



# PEAK DOT **BARBARA** 807H EMBRYOS

Peak Dot Barbara 807H is a model female from our program. Perfect udder, perfect feet, long level hip, wide based and very sound structured. Her dam Peak Dot Barbara 483A is a flawless proven donor with 35 progeny. They are the kind to build a herd around that never go out of style. We wanted to replicate this and try make the best females we could and that lead us to purchasing sexed semen on Haroldson's Legend. The influence of the Erica 74A is well known and undeniable and these sexed female embryos will be blessed with beautiful body shape, balance, pedigree, phenotype and all the qualities that make truly great angus females

Stored at **BOVIGEN**

3 SEXED FEMALE EMBRYOS

EMBRYO LOT LEGEND X BARBARA 807H **EMBRYOS**

**HAROLDSON'S LEGEND 36L**

Hummel South America X BAR-E-L Erica 74A

**PEAK DOT BARBARA 807H**

Ellingson Profound 8155 X Peak Dot Barbara 483A

PE BW 3.1 WW 66 YW 109 MILK 22

PEAK DOT RANCH



**PREMIUM GENETICS**



**HARD TO OBTAIN  
FROM INDUSTRY** —





Every year we pride ourselves in searching over the breeds best from breeders who constantly breed some of the most sought after material that is only available in certain sales if not just Freeze annually. From foundation bulls to the most current sires within the entire breed, you'll find the next breeding piece in this section. Study the pedigrees, the figures and research to anchor your program in years to come.







# SADLER **DONNA** 1004 EMBRYOS

## ELITE EMBRYO PAIRINGS FROM A STAND OUT FEMALE

1004 was a past \$80,000 lead off female from Sadler Ranches where she came highly recommended from her early production record and being poised as the best daughter of her legendary dam 8113. This 0256 daughter had all the credentials you could ever want with a daughter being a past high seller to Duff & C-4. As stout made and as much flex and natural body as any Donna out there, we feel her mating to Prolific and his son Bedrock will be a big hit. Course keep in mind in Canada with Bedrock not available, that particular mating becomes even more valuable.

Stored at **TRANS OVA**

- 1 Sire of Embryos Ellingson Prolific
- 2 Sire of Embryos Boyd Bedrock

### **LOT 17A** 3 EMBRYOS

EMBRYO LOT X ELLINGSON PROLIFIC

#### **ELLINGSON PROLIFIC**

Ellingson Profound 8155 X EA Queen 8070

### **LOT 17B** 3 EMBRYOS

EMBRYO LOT X BOYD BEDROCK

#### **BOYD BEDROCK**

Ellingson Prolific X SITZ Shauna 220H



## **LOT 17A-B** EMBRYOS

AAA 20126619 1004 JAN 1 2021

#### **COLEMAN CHARLO 0256**

O C C Paxton 730P X Bohi Abigale 6014

#### **COLEMAN DONNA 8113**

Musgrave Sky High 1535 X Coleman Donna 714

EPD BW -0.9 WW 61 YW 118 MILK 32

GRAND RIVER ANGUS





# COLEMAN **DONNA** 9431 EMBRYOS

## A MODEL FEMALE TRACING BACK TO DONNA 714

Donna 9431 was a high selling female from the recent Montana Ranch female and a popular 0256 daughter. The tracing of her grandmother to the immortal Donna 714 insures production in a big way, but as an added bonus is sexed female eggs by the Canadian sensation Hi Country. This model female combined with Hi Country has a big upside that will position yourself exactly where you want to be. Big figures come with this mating as well as we plan for 9431 to headline our donor pen this coming year.

1 Embryo Sire HF Hi-Country 7L

Stored at TRANS OVA



## **LOT 17C** 3 SEXED EMBRYOS

EMBRYO LOT 0269 X HI-COUNTRY

**HF HI-COUNTRY 7L**

Ellingson Hi-Range X HF Tibbie 21J



AAA 19483344 9431 AUG 7 2019

## **COLEMAN CHARLO 0256**

O C C Paxton 730P X Bohi Abigale 6014

## **COLEMAN DONNA 7233**

S A V Resource 1441 X Coleman Donna 714

EPD BW 2.4 WW 69 YW 124 MILK 25

**GRAND RIVER ANGUS**





# COLEMAN DONNA 8145 EMBRYOS

Coleman Donna 8145 is one of the most exciting cows we've been able to own here at Cash Cattle Co. She is a flush sister to the \$90,000 Coleman Donna 4203, the \$750,000 Coleman Donna 8146, as well as Coleman Donna 8147 who is the dam of the \$370,000 leadoff female of 2024 Coleman Angus female sale. This Thunder x 714 combo has worked out extremely well. 8145 is no exception as she went Pathfinder on her first 3 calves. She has amazing foot and leg structure, an immaculate udder and perfect disposition. The Coleman Glacier embryos will be full sibs in blood to Coleman Vortex, one of the sale features of the Coleman Angus 2025 bull sale. The Coleman Rock embryos will be equally exciting, progeny from him is in high demand! Embryo opportunities on this cow are very limited, don't miss out!

**Cash Cattle Co guarantees one pregnancy, if none catch buyer will be awarded 3 embryos of the same mating. No further warranties will be provided. CAN and US exportable**

Stored at **BOW VALLEY GENETICS**

- 1 Sire Coleman Glacier 041
- 2 Sire Coleman Rock



## LOT 18A-B EMBRYOS

2301787 IMP 8145F JAN 29 2018

### CONNEALY THUNDER

Baldrige Kaboom K243 KCF X Parka Of Conanga 241 12F

### COLEMAN DONNA 714

Connealy Onward X Coleman Donna 386

EPD BW 1.8 WW 67 YW 116 MILK 32

### LOT 18A 3 EMBRYOS

EMBRYO LOT X COLEMAN GLACIER

#### COLEMAN GLACIER 041

S A V Renown 3439 X Colemann Donna 439

### LOT 18B 3 EMBRYOS

EMBRYO LOT X COLEMAN ROCK 7200

#### COLEMAN ROCK 7200

O C C Juneau 807J X Coleman Donna 714

CASH CATTLE





**COLEMAN DONNA 0269 EMBRYOS**

Donna 0269 is a tremendous young female we think will have a great impact in years to come. Upon seeing her dam, Donna 040, in 2021 we knew she was a cow we wanted to tie into our program and we have done just that. The vast majority of our donor cows trace back to Resource, Juneau and Donna 714. We think this is a phenomenal combination and this cow has all 3 of those amazing animals up close. These embryos are mated to the super popular and now hard to come by, Bar E-L Natural Law. We think these two animals will compliment each other really nicely.

**Cash Cattle Co guarantees 2 pregnancies, if none catch buyer will be awarded 5 embryos of the same mating. If only one catches buyer will be awarded 3 embryos of same mating. No further warranties will be provided. CAN and US exportable**

Stored at BOW VALLEY GENETICS



**LOT 18C 5 EMBRYOS**

EMBRYO LOT 0269 X NATURAL LAW

**BAR-E-L NATURAL LAW 52Y**

S A V Bismarck 5682 X Bar-E-L Magnolia 143K



2353466 IMP 0269H JUNE 28 2020 EMBRYOS

**S A V RESOURCE 1441**

Rito 707 Of Ideal 3407 7075 X S A V Blackcap May 4136

**COLEMAN DONNA 040**

O C C Juneau 807J X Coleman Donna 714

EPD BW 2.4 WW 73 YW 128 MILK 19

CASH CATTLE





# DEXTERITY

**SEMEN MUSGRAVE**

Dexterity is one of our newest genetic acquisitions, coming from the famed Musgrave program in Illinois, a herd known for their picture perfect females and balanced trait bulls. He is a son of Sitz Feat 729H, a bull that has sired some of the highest selling bulls and females in the US as of late and is not available in Canada. Dexterity's dam hails from one of the most successful cow families in the Musgrave herd, the Lady Barabara's. If his first calf crop is any indication of his genetic potential, we are very pleased with the results. Moderate birth weight with above average performance and an ultra cool look with lots of hair. Watch for his sons to highlight our spring bull sale and his daughters to become an integral part of our breeding program. Dexterity was crowned National Reserve Champion at Farm Fair International, Reserve Senior Champion bull at Agribition and Supreme Champion at the Prince Albert Fair. When the show season ended, Dexterity claimed the title of 2024 Canadian Show Bull of the Year

Stored at ALTA GENETICS

- 1 2024 Farm Fair Int. Res. Champion Bull
- 2 \$14 000 Dexterity Daughter

- LOT 19A** 5 Straws
- LOT 19B** 5 Straws
- LOT 19C** 5 Straws
- LOT 19D** 5 Straws
- LOT 19E** 5 Straws
- LOT 19F** 5 Straws

**FF**  
**LOT 19A-F**  
**SEMEN**

1837819 DUA 157C JAN 20 2015

**SITZ FEAT 729H**

Sitz Accomplishment 720F X Sitz Sitz Forever Lady 12F

**MUSGRAVE LADY BARBARA 227**

Musgrave Sky High 1535 X MCATL Lady Barbara 1307-964

EPD BW 1.2 WW 75 YW 137 MILK 25

WILBAR CATTLE CO.





# WILBAR **LUCY** 721G EMBRYOS

Wilbar Lucy 721G is an outcross cow to most mainstream pedigrees in Canada. Her sire, FF Countdown has some of the top producing females in the Wilbar herd. They are ultra feminine - long bodied, big topped cows with ideal udders that are built to last. Lucy 721G comes from one of our original cow families in the herd, dating back some 60+ years. She has produced 3 bulls that have sold through our bull sale including a \$13,000 sale feature that sold to Bench Farming Co. Ltd. and last years \$45,000 high seller to Triple SSS. She has one of the pen favorites again this year with a full brother to these embryos. The sire of the embryos is Connealy Big Valley, a \$90,000 bull that sires performance oriented progeny with exceptional muscle expression and depth. His dam is a beautiful uddered Greeley daughter. We had sons and daughters this year and think quite highly of both sexes.

Stored at **BOVIGEN**



- 1 Sire of Embryos Connealy Big Valley
- 2 \$45,000 maternal brother to embryos Wilbar Stamina 345L
- 3 \$13,000 maternal brother to embryos Wilbar South Point 13J



3 EMBRYOS **LOT 19G**  
EMBRYOS

EMBRYO LOT BIG VALLEY X LUCY 721G  
**CONNELY BIG VALLEY**  
Connealy Dry Valley X Bunty Lay Of Conanga 4930

**WILBAR LUCY 721G**  
FF Countdown D9 X Wilbar Lucy 488E  
PE BW 2.0 WW 61 YW 110 MILK 23

WILBAR CATTLE CO.



**BIG YEAR AHEAD...**





# MONTANA BLACKBIRD 8105

AAA 19124952 YHB 74A FEB 19 2013

## BALDRIDGE COLONEL C251

Baldridge Xpand X743 X Baldridge Isabel Y69

## GALAXY BLACKBIRD 2102

Sitz Upward 307R X Riverbend Blackbird 4301

EPD BW 0.1 WW 68 YW 125 MILK 31

### R PLUS SIMMENTALS

#### SUPERIOR MOTHER, TOP NOTCH SIRE PAIRINGS

When touring the Montana Ranch cowherd we quickly found her and her dam then researched her great track record of production and we were sold on her quickly. 7 past direct progeny have averaged excess of \$20,000 per and just have extra push and width we were looking for in Angus. Weve been told to use the ultimate female sire Natural Law for multiple reasons and of course the talk of CWA Alpine who has hair, awesome hind leg and commanded \$118,000 sale tag. And how could we not want to incorporate the \$185,000 Hi Country based on his great figures and superior mother.

**Guaranteed one (1) pregnancy if implanted by a certified technician. Consigned by R Plus Simmentals.**

Stored at DRI

#### LOT 20A 3 EMBRYOS

EMBRYO LOT X ALPINE

#### HAROLDSON'S AH ALPINE ET 271L

Hummel Palermo SA X Bar-E-L Erica 74A

#### LOT 20B 3 EMBRYOS

EMBRYO LOT X HI COUNTRY

#### HF HI-COUNTRY 7L

Ellingson Hi-Range X HF Tibbie 21J

#### LOT 20C 3 EMBRYOS

EMBRYO LOT X NATURAL LAW

#### BAR-E-L NATURAL LAW 52Y

S A V Bismarck 5682 X Bar-E-L Magnolia 143K



1 Embryo Sire Haroldson's AH Alpine ET 271L  
 2 Embryo Sire HF Hi-Country 7L  
 3 Embryo Sire Bar-E-L Natural Law 52Y

4 8105 Dam Galaxy Blackbird 2102  
 5 8105 Son Montana Java 1264





**LOT 21**  
**EMBRYOS**

# **MBA MADAME PRIDE 9129**

**EMBRYOS**

9129 is a deep ribbed ultra feminine daughter of 316 with the best udder at Meadow Bridge today! Blending 9129 with Density is a priceless combination of proven & reliable genetics. Eggs are available for pickup at MeadowBridge or Alta.

Stored at **ALTA** or **ON THE FARM**

**1** Embryo Sire **S A V 004 Density 4336**

**3 EMBRYOS**

**EMBRYO LOT DENSITY X PRIDE 9129**

**S A V 004 DENSITY 4336**

S A V 8180 Traveler 004 X S A V May 7238

**MBA MADAME PRIDE 9129**

LD Capitalist 316 X S A V Madame Pride 6618

**PE**   **BW 2.3**   **WW 56**   **YW 98**   **MILK 24**

**MEADOWBRIDGE**





# MBA **MADAME PRIDE** 0482 **EMBRYOS**

0482 is the reigning cornerstone cow at Meadow Bridge tremendous muscle & rib shape that blends into a very feminine front end. 0482 is great footed with the ideal udder. In the 4 generation mating of Renovation & 0482 there are 2 crosses to Density 2 crosses to Madame Pride 0075 & 2 crosses to Blackcap May 4136...arguably the greatest breeding assets to come out of SAV.

Stored at **ALTA** or **ON THE FARM**

1 Embryo Sire S A V Renovation 6822

3 EMBRYOS

**LOT 21A**  
**EMBRYOS**

EMBRYO LOT DENSITY X PRIDE 9129

**S A V RENOVATION 6822**

S A V Renown 3439 x S A V Madame Pride 0151

**MBA MADAME PRIDE 0482**

S A V Territory 7225 x S A V Madame Pride 6618

PE BW 1.7 WW 65 YW 115 MILK 22

MEADOWBRIDGE





- 1 Embryo Sire HF Hi Country 7L
- 2 \$14,000 621E Son JPCC America 03L
- 3 Daughter at CSI Angus JPCC Barbara 056K



# BLAIR'S BARBARA 621E EMBRYOS

We have long admired the success, direction, and enthusiasm with which Kevin Blair and his family breed cattle, so when Blair's.Ag offered the pick of their entire cow herd in the prestigious Falls View sale, we knew it was something that we would be bearing down to own. When we toured the pens of Lanigan, our eyes and attention were dominated by a certain Napoleon daughter....and the rest is history. Barbara 621E has turned up the volume in our Angus program, putting four sale bulls in our 2024 sale that certainly were standouts. At this stage of the game, Hi-Country needs no introduction in Angus circles. His outcross pedigree, phenotype, and big numbers have caught the eye of cattlemen across the globe, and that favour is definitely being reflected in what semen is fetching, averaging just barely under \$900 a straw at this past Falls View sale. This mating is as modern and futuristic as you will come across.

Stored at BOVIGEN



**FF**  
**LOT 22**  
**EMBRYOS**

3 EMBRYOS

EMBRYOS HI-COUNTRY X BARBARA 621E

**HF HI-COUNTRY 7L**

Ellingson Hi-Range X HF Tibbie 21J

**BLAIR'S BARBARA 621E**

Duff Napoleon 232 X Barbara Of Peak Dot 505S

PE BW 0.6 WW 72 YW 120 MILK 20

JP CATTLE CO





# MUSGRAVE **BLACKCAP** 834-510 EMBRYOS

The Blackcap Missie cow family is as famous for it's style, superior structure, and superb udder quality as Jimmy Joe is for his moustache. Not only is 834-510 a pretty picture, but production is in her genes, having weaned off a bull calf at 205 days at 892 pounds; a true cowman's dream. This past fall saw a daughter at Greenwood's sell in The Evolution to Triple L, and was highlighted as being a tremendous show prospect with her awesome outline, soundness, and functionality. Kelly Schaff makes special note of how superior the foot on Baldrige Badger is, as well as his ability to inject extreme performance into his progeny. This is truly a mating to bridge the gap on a show ring look with real word function.



Stored at **DAVIS-RAIRDAN**

1 Embryo Sire Baldrige Badger



3 EMBRYOS

EMBRYO BADGER X BLACKCAP 834-510

## **BALDRIDGE BADGER**

Hoover No Doubt X Baldrige Isabel Y69

## **MUSGRAVE BLACKCAP 834-510**

Musgrave Boulder X MCATL Blkcp Missie 510-1394

JIMMY JOE HENDERSON





# LAST CALL

**SEMEN DMM GT 200J**

Every once in awhile a herdsire comes along that really sets himself apart. DMM GT LAST CALL 200J is that beast! His extraordinary dam, Youngdale Kristina 31D, is the first reason to use him. His sale topping progeny and Champions he's produced across the country are some of the other reasons. He can make a cool one and is as strong on bulls as he is on heifers. Calving has been exceptional. Bull calves avg. bw - 83lbs. Heifer calves avg. bw - 74lbs. If you want cattle that are here for the long haul don't miss out on this opportunity

- LOT 24A** 10 Straws
- LOT 24B** 10 Straws
- LOT 24C** 10 Straws
- LOT 24D** 10 Straws
- LOT 24E** 10 Straws

Stored at ALTA GENETICS

**LOT 24A-E**  
SEMEN

2262130 DMM 200J NOV 12 2021

**SIX MILE FORT KNOX 27F**

Pleasant Valley Lute 1207 X Six Mile Tempting Tibbie 280C

**YOUNG DALE KRISTINA 31D**

Young Dale Believe 46B X Young Dale Kristina 3U

MILLER WILSON ANGUS

1 Dam Youngdale Kristina 31D  
 2 Son DMM Contagious 40M, owned by 66 Ranch  
 3 Son DMM Revenge 92M, owned by Double F Cattle Co





1 Sister sells as lot 2



# GATSBY

**SEMEN PEAK DOT**

**135L**

Gatsby just keeps getting better and better. Since selling in last years Freeze Gatsby has passed every test thrown at him. He froze semen right away, he bred a big group of heifers at Peak Dot for 50 days and than went out and covered another large group at Everblack Angus this summer. He came in sound this fall, fleshed up right away and probably looks better now than he ever has. His muscle, capacity, center body mass and natural fleshing ability have put him in a class of his own. He has the look of a real cow maker and will sire deep bodied females with quality udders, added softness, style and maternal presence. Gatsby comes with very good performance numbers ranking in the very top 1% of the breed for weaning weight and yearling weight EPDs. He also ranks right near the top for heifer pregnancy rate, milk, hoof claw and docility EPDs. All very important traits. His SAV Seedstock dam is a model Angus cow with ideal body type and unmistakable maternal presence. This Gatsby semen would be an excellent investment, ideal for any conventional or IVF flushing programs.

- LOT 25A** 5 Straws
- LOT 25B** 5 Straws
- LOT 25C** 5 Straws
- LOT 25D** 5 Straws

Stored at **BOVIGEN**

# LOT 25A-D

**SEMEN**

2322627 PDAR 135L JAN 22 2023

## SCHIEFELBEIN GABLE 311

Sitz Resilient 10208 X Frosty Elba Lizzy 5569

## PEAK DOT ROSILLA 117E

S A V Seedstock 4838 X Peak Dot Rosilla 377C

EPD BW 2.4 WW 86 YW 150 MILK 29

**EVERBLACK ANGUS, HARPREY FARMS, & PEAK DOT RANCH**





# PHENOTYPE





Every fall of the year some of the most eye appealing cattle make their way to the big cities to be in the spotlight of the who's who of purebred cattle. This year in Freeze '25 we thought an added touch was to focus a section on the cattle that have garnered championship status while alongside tremendous popularity. Some of the most discriminating cattle people have declared these genetics the best of the best and we are honored to showcase them to you.

# GALLORE





# CONLEY WILLARD 3319

The 2024 Toronto Royal Winter Fair Grand Champion Bull, and the Lead off high selling yearling Bull at the 2024 Conley Cattle Co Bull Sale, this bull comes to you with an exceptional look and skeletal design, very stout featured, sound structured with added length and style.

This will be the first semen in Canada offered out of the son of J Trademarke 1037, the \$165,000 top selling bull from the Cattleman's Cut Sale in Nebraska that was purchased by Conley Cattle Co and Coleman Angus.

His Donor Dam, Conley Sandy 9893 is a young BC Robust daughter out of the legendary Sandy 2355, who is one of the highest income-producing females to grace the pastures at Conley Cattle! Sandy 9893 was the lead off Donor in the Conley Cattle 2024 fall female sale were she sold for 1/2 interest for \$100,000 to a exciting new Oklahoma Angus Enthusiast!

Conley Willard 3319L has a moderate birth, rapid growth, high \$M, excellent claw and angle EPDS with a -.78 PAP EPD, 3319 had the #1 REA and #1 IMF actual scan measurement of all the Pen and Carload Bulls at the 2024 National Western Stock Show. Actual REA 18.4 Actual IMF 6.90

This Bull has the look, and style and numbers to build a program around!



1 Dam Conley Sandy 9893  
2 2024 Royal Angus Grand Champion

- LOT 26A 5 Straws Stored at BOVIGEN
- LOT 26B 5 Straws
- LOT 26C 5 Straws
- LOT 26D 5 Straws
- LOT 26E 5 Straws
- LOT 26F 5 Straws
- LOT 26G 5 Straws
- LOT 26H 5 Straws
- LOT 26I 5 Straws
- LOT 26J 5 Straws

**LOT 26A-J**  
**SEMEN**

2394621 IMP 3319L JAN 22 2023  
**J TRADEMARK 1037**  
 SITZ Resilient 10208 X Mill Brae Iden Georgina 4086  
**CONLEY SANDY 9893**  
 BC Robust 0807 X Silveiras S Sis Sandy 2355  
 EPD BW 2.6 WW 89 YW 142 MILK 26  
 CLARKE FAMILY FARMS INC,  
 JON-ERN FARMS LIMITED, CONLEY CATTLE CO.





# U2 SALLY 202G EMBRYOS

Our first ever offering of embryos attached to the immortal Willard. Sally came via the historic U2 Dispersal as a highly recommended female. Her sheer power and mass has been a big contributor here at the farm, but we feel her best effort will come mated to the champion Willard. We are so excited to showcase Willard as his first calves are hitting the ground running. Come right on here boys with a mating from the top our program with eye appeal, big EPD graph and power!

Stored at **HEARTLAND**

- 1 Sire of Dam, Coleman Bravo 6313
- 2 Sire of Embryos at 2024 Royal Angus



**LOT 26K**  
**EMBRYOS**

3 EMBRYOS

EMBRYO LOT WILLARD 3319 X U2 SALLY

**CONLEY WILLARD 3319**

FF Countdown D9 X Wilbar Lucy 488E

**U2 SALLY 202G**

Coleman Bravo 6313 X U-2 Sally 127X

PE BW 2.5 WW 78 YW 131 MILK 29

CLARKE FAMILY FARMS INC,  
JON ERN FARMS LIMITED, C4 CATTLE CO





# BCR **LUCY** K017 EMBRYOS

## A PRODUCTION POWERHOUSE

An undefeated female no matter the time or place, Lucy K017 carries all you could ever want in an Angus female. Solid EPD profile with being above breed Ave in all major sectors, Lucy was the popular Grand Champion Female of the '23 Royal and the National Jr Beef Heifer show on the same weekend. Commented for having that extra look, hair, bone, top and over mass. She is destined to be a producing powerhouse. Her first daughter by Power Chip will see the bright lights this coming year to prove her capabilities. Cross with the popular A1 and sexed should make the next contender on the tan bark pretty quickly.

Stored at **HEARTLAND**



1 Embryo Sire Baldrige Badger

**FF**  
**LOT 27**  
**EMBRYOS**

3 SEXED EMBRYOS

EMBRYO LOT CONLEY A1 X LUCY K017

### CONLEY A1 4248

Conley A 1 X Conley Mulben Pride 8248

### BCR LUCY K017

SCC SCH 24 Karat 838 X Wallace Lucy 8132

RAIL LINE FARMS



# EMPRESS 3100 STORY

Empress 3100 has made a serious impact under the bright lights in Toronto, not only being a 2 time Supreme Champ (never been done before) but now has progeny surfacing to the top of the industry. The next 4 lots demonstrate her influence and talent as one of the best to walk around at the famed Premier Livestock.







# SIX MILE **EMPRESS** 98M EMBRYOS

## WHEN YOU TALK ABOUT PHENOTYPE, YOU TALK ABOUT EMPRESS

A stall favourite from CWA as she was Reserve Intermediate Calf Champion as well as being the high selling heifer calf from the 6M female sale this past fall. Her dreamy outline, massive rib cage with big legs caught alot of attention. Stemming from the phenotypic Empress cow family, 98M has the hair, skeleton, and fluid motion to do some serious damage come fall of 25. Mated to the best sires we can get our hands on, there's a big future that lies ahead of 98M

- 1 Embryo Sire HF Hi-Country 7L
- 2 Embryo Sire S A V 004 Density 4336

Stored at **BOVIGEN**

### **LOT 28A** 3 IVF EMBRYOS

EMBRYO LOT X HI COUNTRY

#### **HF HI-COUNTRY 7L**

Ellingson Hi-Range X HF Tibbie 21J

### **LOT 28B** 3 SEXED IVF EMBRYOS

EMBRYO LOT X S A V DENSITY

#### **S A V 004 DENSITY 4336**

S A V 8180 Traveler 004 X S A V May 7238



2362715 SIXM 98M FEB 3 2024 EMBRYOS

#### **WOODHILL HELIX**

Sitz Stellar 726D X Cherne Evergreen Z387-D350

#### **SIX MILE EMPRESS 70F**

PVF Insight 0129 X OSU Empress 3100

EPD BW 1.8 WW 69 YW 119 MILK 21

HOLLINGER LAND & CATTLE, R PLUS,  
ELK RIDGE & 719





# PREMIER EMPRESS 103 FLUSH

**OFFERING THE RIGHT TO ONE IVF FLUSH ON PREMIER HASSON EMPRESS 103 (GUARANTEED 6 EMBRYOS)**  
 As always a female of donor status must have generations of dams and sires that combine elite genetics, maternal traits, performance and predictability. Her grand-dam, OSU Empress 3100 needs no introduction in terms of genetic royalty! Her impressive phenotype lead her down a second-to-no-show career. Being crowned a two-time Supreme Champion Female at the Toronto Royal in 2014 and 2015, as well as a two-time "Top Ten" finish in the CWA Beef Supreme, first as a bred heifer, then as a 2-year-old with her calf at side was a feat very few have conquered.  
 Much like her grand-dam, EMPRESS 103 has certainly carried the torch in terms of her success in the show ring. During her show career, she has been crowned champion countless times. Most notably in 2023, 103 was selected as National Champion Angus Female with her Conley Prowess heifer calf at side. To round out her incredible fall, Empress was selected as one of the "Top Ten" finalists, in the prestigious CN Beef Supreme at Canadian Western Agribition.  
 We exhibited her first two natural daughters this fall where they gathered plenty of attention in the stall and were evaluated highly in the ring. Her 2023-born Prowess daughter secured Champion Intermediate Yearling Female, while her 2024 Blacklist daughter was declared Champion Senior Heifer Calf in the 2024 Angus show at Canadian Western Agribition.  
 The EMPRESS cow family is certainly one to make note of. Most recently, a maternal sister to 103 sold for an incredible \$140,000 at the Fallsview On the Track sale in December of 2024.  
 The EMPRESS cow family sets the standard for show ring champions and high sellers. The opportunities are endless with EMPRESS 103...

- 1 Empress 103 & Calf 2024 Champion Angus Female
- 2 Daughter Grylls Empress 2324L
- 3 Daughter Grylls Empress 2421M



2198090 PLS 103J JAN 6 2021

**MICH WHEATLAND HICALIBER 7197E**  
 Exar Classen 1422B X Exar Highrose 84026

**PREMIER HASSON EMPRESS 609**  
 Silveiras Style 9303 X OSU Empress 3100

EPD BW 2.5 WW 53 YW 88 MILK 21

GRYLLS CATTLE CO





# PREMIER HASSON **EMPRESS** 609

FULL SIB SEXED FEMALE EGGS TO \$120,000 FALLSVIEW ON THE TRACK HIGH SELLER!! The Empress cow family has been so immaculate to our program, it was devastating to lose 3100 so early in life. But her shining ways continued this fall and especially at Fallsview on the track where her grand daughter claimed the limelight like her mother always did. 609 being a direct daughter of 3100 has been a monumental to the show ring atmosphere. A direct daughter was National Champion for Nat Grylls in '23 while another sister was a sale highlight for Dudgeon Cattle Co. These Empress's don't miss and 609 is now poised to take the reigns of her coveted mother. **Embryos available April 1st**

- 1 Sire of Embryos PVF Marvel 9185
- 2 \$120 000 Full Sibling Premier Hasson Empress 405M
- 3 National Champion Daughter Premier Empress 103

Stored at **HEARTLAND**



**FF**  
**LOT 30**  
**EMBRYOS**

3 SEXED EMBRYOS

EMBRYO LOT MARVEL 9185 X EMPRESS

**PVF MARVEL 9185**

PVF Blacklist 7077 X PVF Missie 5245

**PREMIER HASSON EMPRESS 609**

Silveiras Style 9303 X OSU Empress 3100

PE BW 2.8 WW 56 YW 99 MILK 24

PREMIER LIVESTOCK & HASSON LIVESTOCK





W-C



2

# PREMIER HASSON **EMPRESS** 917 EMBRYOS

A prime mating for the 2025 breeding season is these sexed female eggs out of one of our most dominant producing cows. The production record of Empress 917G is as impressive as we have on the farm. She herself was a past Fallsview high seller at \$32,000 and in the same year was Reserve Grand Champion female as a heifer calf at RAWF. More importantly was the fall of 24 she had in production. DDGN 307L was a class winner and a \$22,500 1/2 interest high seller to Wilbar Cattle CO in Sask via the Royal Sale with plans of entering both our Donor pens. Then just 7 weeks later a daughter sold to the McArthur Family in Fallsview for \$18,000. A female that gets it done no matter her mating and we think her match to sexed AI just might be her best ticket yet.

- 1 Daughter DDGN Empress 307L
- 2 Sire of Embryos Conley A1
- 3 Daughter DDGN Empress 407M

Stored at **HEARTLAND**



3

# FF

**LOT 31**  
**EMBRYOS**

3 SEXED EMBRYOS  
EMBRYO LOT CONLEY A1 X EMPRESS

**CONLEY A 1**  
Gateway Follow Me F163 X EXAR Princess 6741

**PREMIER HASSON EMPRESS 917**  
Colburn Primo 5153 X OSU Empress 3100

DUDGEON CATTLE CO.





- 1 Son owned by Griswold Cattle Vision Dr Phil 2025
- 2 \$25,000 High Seller KLB 3201 Saras Dream 3201
- 3 Supremer Champion Daughter from Sullivan Farms



# HILL VALLEY **RECKONING** 931 SEMEN

The show ring contender to breed enhancer pipeline isn't exactly one that sees a lot of traffic; and yet we see how Reckoning has been blazing his own trail down it. His own show career saw him receive the 2020 NAILE and 2021 OKC Intermediate Angus Champion accolades. As we all know, at the end of the day the banners will fade and collect dust, but to go on and have a stellar production record will stand the test of time. Reckoning is leaving progeny that are a testament to his own highlights: up-headed cattle with dimension, muscle shape, and hair. A descendant of the great Believe, Reckoning is the natural choice to not only improve the show ring qualities of females, but to add breed character, foot quality, and outstanding phenotype.

Stored at ALTA

**ALL UNITS SEXED FEMALE**

<b>LOT 32A</b>	5 Straws	<b>LOT 32F</b>	5 Straws
<b>LOT 32B</b>	5 Straws	<b>LOT 32G</b>	5 Straws
<b>LOT 32C</b>	5 Straws	<b>LOT 32H</b>	5 Straws
<b>LOT 32D</b>	5 Straws	<b>LOT 32I</b>	5 Straws
<b>LOT 32E</b>	5 Straws	<b>LOT 32J</b>	5 Straws



## LOT 32A-J SEMEN

2196725 IMP 931G MAY 4 2019  
**YOUNG DALE BELIEVE 46B**  
 Young Dale Xcaliber 32X X Young Dale Grace 126Z

**HILL VALLEY ELBINA 456**  
 Mill Coulee Upward 005 X Hill Valley Elbina 928  
 EPD BW 4.4 WW 72 YW 120 MILK 10

YOUNGDALE ANGUS





# WOODBINE

## HASSON 2024 SEMEN

WOODBINE once again captured the attention of many at the recent historic and annual Premier & Guests Falls View Production Sale. After rapid, uncontrolled bidding, 1/3 interest of WOODBINE was purchased by two very astute cattle operations North Huron Angus and Derrer Cattle.

WOODBINE is very unique in terms of combining unparalleled phenotype, and look that makes one gravitate to him, along with excelling in terms of the functional traits that lead to longevity and profitability. He himself is a performance power house with impeccable structure. He possesses a tremendous foot with excellent claw shape along with enough set in his hock which allows him to cover ground.

He is backed by a gorgeous BC Lookout dam who is a model Angus cow with an exceptional udder.

February Freeze marks the day that will allow you to inject the influence of what we feel is the most exciting up an coming young herd sire into your program.

- 1 Sire PVF Marvel 9185
- 2 Dam Hasson Blackbird 35H
- 3 Hasson Woodbine 2024

Stored **ON THE FARM**

**LOT 33A** 5 Straws

**LOT 33B** 5 Straws

**LOT 33C** 5 Straws

**LOT 33D** 5 Straws

**LOT 33E** 5 Straws



## LOT 33A-E SEMEN

2392521 HASS 35M FEB 3 2024

### PVF MARVEL 9185

PVF Blacklist 7077 X PVF Missie 5245

### HASSON BLACKBIRD 35H

B C Lookout 7024 X Conley Blackbird 305

PE BW 2.9 WW 56 YW 98 MILK 23

PREMIER LIVESTOCK, HASSON LIVESTOCK, DERRER CATTLE, NORTH HURON ANGUS





# SEMEN CONELY **A1**

1 \$28,000 1/2 interest daughter, DDGN Suzy 409M

## HARD TO OBTAIN SIRE WITH ALL THE BELLS & WHISTLES

A1 is now one of the hardest to come by added look sires the industry has to offer today . Loaded with extra hip, hind quarter, bone and hair. He's the sire that takes phenotype to the next level. A1 cattle calve easily, grow fast and develop that swoop of rib with a perfect skeleton and ear set we all just love to have. His daughter's obviously popular south of the line, Canada got its first taste this fall with the only daughter to ever sell commanding a \$56,000 evaluation for the Dudgeon Cattle Co at the 2024 Royal sale. You want extra dimension, big backed and gentle to work with , you A1.

Stored at **ALTA GENETICS**



## LOT 34A-F SEMEN

AAA 20177675 105 APR 3 2021

### GATEWAY FOLLOW ME F163

C&C McKinley 3000 EXAR X Dunk-W Maxine HR 505C

### EXAR PRINCESS 6741

BC II Skyfall 2812 X EXAR Princess 5391

EPD BW 3.6 WW 55 YW 81 MILK 14

RAIL LINE ANGUS

#### ALL UNITS SEXED FEMALE

<b>LOT 34A</b>	5 Straws	<b>LOT 34D</b>	5 Straws
<b>LOT 34B</b>	5 Straws	<b>LOT 34E</b>	5 Straws
<b>LOT 34C</b>	5 Straws	<b>LOT 34F</b>	5 Straws







# DMM **GEORGINA** 7H EMBRYOS

DMM Georgina 7H is one of our premier donors sporting an exceptional udder and excellent feet. If you wanted to paint a picture of a beautiful Angus cow, with that true Angus head, 7H would be your girl. She consistently puts progeny at the top end of our pens whether it is male or female. DMM Georgina 7H and her progeny have been to the backdrop many times in the showing as well. If you want one that can stamp them with class and still have some performance don't miss out on this unique mating with Brooking Emerald. This bull has made some great ones already and the semen is hard to come by.



Stored at **BOW VALLEY**  
1 Sire Brooking Emerald 9179



**LOT 35**  
**EMBRYOS**

3 EMBRYOS

EMBRYO LOT EMERALD X GEORGINA 7H

**BROOKING EMERALD 9179**

S A V Renovation 6822 X Brooking Beauty 6051

**DMM GEORGINA 7H**

Bar S Range Boss 4002 X Duralta Georgina 110U

PE BW 3.1 WW 58 YW 110 MILK 26

MILLER WILSON ANGUS





**FF**  
**LOT 36A**

3 UNITS SEMEN  
**SILVEIRAS STYLE 9303**

1597753 IMP 9303W JAN 20 2009

**GAMBLES HOT ROD**

Famous 7001 X Champion Hill Lady 703

**SILVEIRAS ELBA 2520**

Twin Valley Precision E161 X D A R Elba 55

EPD BW 2.9 WW 44 YW 76 MILK 14

**CEDARVIEW ANGUS**

Stored at **AT THE FARM**



**FF**  
**LOT 36B-C**

SEMEN 2 PACKS OF 5 UNITS  
**N BAR EMULATION EXT**

AAA 10776479 U23 FEB 1 1986

**EMULATION N BAR 5522**

Emulation 31 X 2K Ankony 8F78 Lass 8F275

**N BAR PRIMROSE 2424**

Emulation 31 X Primrose N Bar 9962

EPD BW 4.0 WW 103 YW 120 MILK 23

**CEDARVIEW ANGUS**

**LOT 32B** 5 Straws

Stored at **AT THE FARM**

**LOT 32C** 5 Straws





- 1 Brother Hummel Palermo
- 2 Brother Hummel South America
- 3 \$22,500 Daughter Kemp Brothers Everelda 456L
- 4 Son Kemp Brothers Lobos 469L



# HUMMEL **ROBERTO**

**SEMEN** Stored at DMV GENETICS

They call him The Chosen One. Roberto was the gavel down standout from the second set of calves from the Hummel Livestock Argentina embryos. These Argentina embryos are setting records and a new standard across many of the most esteemed and progressive operations south of the border, including Coleman Angus and Griswold Cattle. Roberto has certainly done a man's job here, not only providing the extreme outcross advantage, but creating progeny with mass, soundness, and an excellent phenotype. We feel the Roberto proof was in the pudding with our Royal Angus Sale strong, showcasing three daughters and a son. Isn't it a treat that the Real World and Show Cattle can in fact be fused into one?



**LOT 37A-E**

**SEMEN**

2280727 IMP 106J APR 26 2021

**DON APARICIO SERRUCHO 57 MAXI**

Don Jose 176 Maxi X Don Aparicio Serranias 57 Bismarck

**PRIMROSE VOLCANO 4652-T/E-**

S A V Bismarck 5682 X Volcan Primrose 3768-T/E

EPD BW -0.2 WW 44 YW 59 MILK 11

**KEMP BROS**



- LOT 37A** 5 Straws
- LOT 37B** 5 Straws
- LOT 37C** 5 Straws
- LOT 37D** 5 Straws
- LOT 37E** 5 Straws



POWER  
POWER  
POWER



Unmatched to most sales around, this section is designated for the true proven genetics that never run out of trend. No matter the market levels the Power and Pedigree designed in here will carry your outfit through good times and bad. Hard to obtain and with outcross pedigrees we offer these select lots with upmost confidence. Whether it be 5 straws or semen or 3 embryos, the difference going forward can be made here.

---





*pedigree*  
**WITH PEDIGREE**





-M-

-097-



# MERIT INVESTMENT SEMEN 1054J

**SPEAKS FOR HIMSELF, BUT BACKED BY A PROVEN PEDIGREE**

INVESTMENT stands on impressive feet, is strong topped and stout made. His progeny consistent in their type standout for modest birth weights, correct structure, overall length, hair coat and presence.

Backed by U-2 COALITION 206C and MERIT FLORA 6078 who both speak for themselves as correct and productive individuals.

INVESTMENT heifers and milking daughters are the type you want to build a herd around. Bull calves have been top sellers for Duralta Farms, Golden Oak Livestock and Lindskov's LT Ranch. A son LT Marquee 169L sold for a record breaking \$700,000. Look for INVESTMENT progeny in the upcoming Murray Ranches Bull Sale March 6, 2025 & 66 Ranches Bull Sale April 16, 2025.

**CAN/US qualified**

**LOT 38A** 5 Straws

**LOT 38B** 5 Straws

**LOT 38C** 5 Straws

**LOT 38D** 5 Straws

Stored at **ALTA GENETICS**

- 1 Merit Flora 6078D - Dam of Investment
- 2 Golden Oak 1054 Preacher 333L - \$70,000
- 3 LT Marquee 169L - Valued at \$1,400,000
- 4 Golden Oak 1054 Magnolia 435M - \$47,500



1



2



3



4



**LOT 38A-D SEMEN**

2233546 TJL 1054J FEB 9 2021

**U-2 COALITION 206C**

HF Syndicate 213Z X U2 Erelite 109Z

**MERIT FLORA 6078D**

Bar S Range Boss 4002 X Merit Flora 4120

EPD BW 2.7 WW 64 YW 99 MILK 25

**MURRAY RANCHES & 66 RANCH**

AN INVESTMENT THAT REALLY PAYS OFF





# U-2 COALITION 206C SEMEN

Those real good female making sires seem to be timeless with semen sales only getting more valuable over time. Well here we have that plus a bull that at nine years of age still has sale topping sons at very Elite Bull Sales North and South of the border. This Pathfinder sire is backed by one of the best cows in the business, the \$140,000 Erelite 109Z. A cow so potent in passing down her incredible teat size and placement, fleshing ability, production, feminine and fertility. Buy with confidence on a sure thing.

Stored at ALTA

1 Son Merit Investment 1004J

- LOT 39A** 5 Straws    **LOT 39D** 5 Straws
- LOT 39B** 5 Straws    **LOT 39E** 5 Straws
- LOT 39C** 5 Straws    **LOT 39F** 5 Straws



**LOT 39A-F**  
**SEMEN**

1837798    DUA 206C    JAN 23 2015

**HF SYNDICATE 213Z**

Connealy Consensus 7229 X HF Miss Blackcap 27R

**U2 ERELITE 109Z**

Young Dale Xclusive 25X X U-2 Erelite 1X

EPD   BW 1.1    WW 56    YW 111    MILK 26

U-2 RANCH



# SAV **DENSITY** 7639

AAA 14725035 4336 MAR 25 2004

**SEMEN**

**S A V 8180 TRAVELER 004**

Sitz Traveler 8180 X Boyd Forever Lady 8003

**S A V MAY 7238**

Leachman Right Time X S A R Prospector May

EPD BW 3.8 WW 50 YW 88 MILK 19

**LOT 40A** 2 Sexed Female Units

**719 CATTLE**

Stored at ALTA

**LOT 40B-D** 3 Packs of 5 Units

**MEADOWBRIDGE ANGUS**

**LOT 40B** || 5 UNITS **LOT 40C** || 5 UNITS **LOT 40D** || 5 UNITS Stored **ON THE FARM**  
OR ALTA GENETICS



# SAV **RENOVATION** 6822

AAA 18579309 6822 JAN 28 2016

**SEMEN**

**S A V RENOWN 3439**

Rito 707 of Ideal X S A V Blackcap May 4136

**S A V MADAME PRIDE 0151**

S A V 004 Density 4336 X S A V Madame Pride 0075

EPD BW 2.5 WW 67 YW 122 MILK 16

**LOT 40E-G** 3 Packs of 5 Units

**MEADOWBRIDGE ANGUS**

**LOT 40E** || 5 UNITS **LOT 40F** || 5 UNITS **LOT 40G** || 5 UNITS Stored **ON THE FARM**  
OR ALTA GENETICS



# ELLINGSON **PROLIFIC**

2309445 IMP 01290J MAR 1 2021

**SEMEN**

**ELLINGSON PROFOUND 8155**

S Powerpoint WS 5503 X EA Rosetta 6157

**EA QUEEN 8070**

Koupal Juneau 797 X EA Queen 23504301

EPD BW 3.8 WW 88 YW 144 MILK 15

**LOT 40H-J** 3 Packs of 5 Sexed Female Units **MEADOWBRIDGE ANGUS**

**LOT 40H** || 5 UNITS **LOT 40I** || 5 UNITS **LOT 40J** || 5 UNITS Stored **ON THE FARM**  
OR ALTA GENETICS







# MUSGRAVE 316 **STUNNER**

**SEMEN**

Stunner progeny have come to the forefront lately with semen hard to find. This past fall one of the top selling females at MWC was \$72,000 daughter while AAC '23 the high selling \$84,000 Barbara cow was a daughter as well. A feature in the spring is a son selling at Steppler s in Feb. This semen will catch a guy running and look pretty smart in short time.

Stored at **ON THE FARM**

1 Son Steppler Stunner 165M

2 Daughter MWC Erelite 38K  
3 Daughter Barabara 7H



- LOT 41A** 5 Straws
- LOT 41B** 5 Straws
- LOT 41C** 5 Straws
- LOT 41D** 5 Straws
- LOT 41E** 5 Straws
- LOT 41F** 5 Straws

**FF**  
**LOT 41A-F**  
**SEMEN**

AAA 18467508 1676 JAN 23 2015

**LD CAPITALIST 316**

Connealy Capitalist 028 X LD Dixie Erica 2053

**MCATL BLACKBIRD 831-1378**

MCATL Pure Product 903-55 X MCATL Blackbird 1378-573

EPD BW 0.2 WW 68 YW 116 MILK 31

**STRONGBOW**



- 1 CWA 2024
- 2 CWA 2023
- 3 CWA 2022
- 4 Daughter, MSG 34M



# MAINSTREAM **HEAD OF STATE** 21K SEMEN

Head of State has piqued the interest of several breeders who have been following him on the show road, from winning junior bull calf divisions, to a yearling to a unique two-year-old showing alongside his progeny. This fall has been the most rewarding for us here at Mainstream receiving accolades from some of the most prestigious breeders in the industry. The common theme among these breeders was his natural thickness, he has so much dimension, he is good footed and sound, and that everyone has cows this bull could work on. This is your opportunity to acquire semen on one of the most phenotypically attractive bulls, from the most desirable Angus head and smooth front end to his balanced design, body mass and dimension to his structural integrity.

Stored at **BOVIGEN**

**LOT 42A** 5 Straws

**LOT 42B** 5 Straws

**LOT 42C** 5 Straws

**LOT 42D** 5 Straws

**LOT 42E** 5 Straws



**LOT 42A-E**  
SEMEN

2284411 MSG 21K FEB 12 2022

**WIWA CREEK MONARCH 53'08**

Switz Monarch 7R X Wiwa Creek Erica 81'06

**MICH MAINSTREAM LADY LOLA 479**

MICH Aviator 189Y X Copper CRK Lady 1207

EPD BW 4.2 WW 46 YW 75 MILK 23

MAINSTREAM GENETICS & 20/20 ANGUS





# GRACE

**YOUNG DALE** 126Z EMBRYOS

## AN EASY CHOICE FOR ANY PROGRAM

Grace 126Z is a pillar in the Canadian Angus fraternity. Her production record is as valuable as any around no matter who she is mated to. Great feet, big hip and huge outline. No one has ever regretted incorporating her into their program.

Stored at **BOVIGEN**

- 1 Sire S A V Bismarck 5682
- 2 Sire Ellingson Turn Key 0170

### LOT 43A 3 EMBRYOS

EMBRYO LOT X BISMARCK

#### S A V BISMARCK 5682

G A R Grid Maker X S A V Abigale 0451

### LOT 43B 3 EMBRYOS

EMBRYO LOT X ELLINGSON TURNKEY

#### ELLINGSON TURN KEY 0170

Ellingson Three Rivers 8062 X EA Miss Blackbird 5054



## LOT 43A-B

EMBRYOS

1675938 YDF 126Z MAR 18 2012

### YOUNG DALE PANARAMA 66T

S A V Net Worth 4200 X Young Dale Pollyanna 22P

### YOUNG DALE GRACE 19T

Buffalos Conclusive BN46 X Young Dale Grace 1R

EPD BW 1.2 WW 44 YW 71 MILK 28

**JIMMY JOE HENDERSON**





**WEAVERCROFT ANNIKA 7H FLUSH**

We are excited to announce the right to flush Weavercroft Annika 7H. She is an own daughter of the legendary DMM Blackbird 105A cow from the Miller Wilson program. Sired by the Boss Lake Bonafide bull. The Blackbird 105A cow has 80 progeny registered to date and is one of the most decorated cows that has been up and down the show road in the last few years. We feel that her daughter 7H has the same potential to be a highly productive female in the angus breed. She has such great depth of rib and power to her while keeping that feminine look. She lays down a near perfect udder when she calves. Progeny are hard to come by out of the 105A cow so here is your chance to flush a great daughter of hers.

*Flush can either be conventional or IVF. Guarantee of 6 conventional or IVF with an open top. She is due to calve the end of January and available for flushing after that. Buyer is responsible for all flush costs.*

1 Dam DMM Blackbird 105A



**FF**  
**LOT 44**  
**FLUSH**

2143656 WCI 7H JAN 9 2020

**BOSS LAKE BONAFIDE 722E**

S A V Pedigree 4834 X HF Echo 206Y

**DMM BLACKBIRD 105A**

Gumbo Gulch Creed 945 X Southern OX Blackbird 12J

EPD BW 5.4 WW 60 YW 95 MILK 21

CJR CATTLE COMPANY





# BELOW ZERO

**COLEMAN**

**2106 SEMEN**

One of the cornerstone objectives of February Freeze is create an offering that can develop and boost any operations genetic artillery, and with pieces that are not your typical song and dance that are commonly found on the open market. This lot exemplifies that mission, as the \$150,000 high selling Coleman Below Zero sexed female semen is at best extremely hard to track down, if it is available at all. Below Zero is a surefire option on heifers, with an extremely balanced number profile and exceptional phenotype. He is as maternally backed as any, with Coleman's highly stressing his dam's beautiful udder construction and overall look. The cow family lines represented on the bottom side of her pedigree are as proven as any, with Below Zero's grandam being a full sister to Coleman Donna 8146 and Coleman Donna 4203, the mother of the \$150,000 Banker. We can't tell you what to think, but investment here is just good business.



**LOT 45A-F**  
**SEMEN**

2390358 IMP 2106K JAN 20 2022

**SITZ STELLAR 726D**

Mohnen Substantial 272 X Sitz Pride 200B

**COLEMAN DONNA 0153**

Coleman Charlo 0256 X Coleman Donna 8147

EPD BW -2.5 WW 62 YW 113 MILK 24

**D&N LIVESTOCK**

**ALL UNITS SEXED FEMALE**

- |                         |                         |
|-------------------------|-------------------------|
| <b>LOT 45A</b> 5 Straws | <b>LOT 45D</b> 5 Straws |
| <b>LOT 45B</b> 5 Straws | <b>LOT 45E</b> 5 Straws |
| <b>LOT 45C</b> 5 Straws | <b>LOT 45F</b> 5 Straws |

Stored at ALTA

- 1 Dam Coleman Donna 0153
- 2 Full Sister to Grandam Coleman Donna 8146





SEMEN 4 PACKS OF 5 UNITS  
**S RIGHT TIME 7861**

AAA 18762372 7861 MAR 4 2017

**SITZ RIGHT TIME 8034**

Leachman Right Time 338-5605 X Sitz Florabelle Fanny 1293

**S QUEEN ESSA 367**

S Chisum 6175 X S Queen Essa 208

EPD BW 2.2 WW 80 YW 124 MILK 25

JIMMY JOE HENDERSON

Stored at BOVIGEN

**LOT 46A** 5 Straws **LOT 46C** 5 Straws

**LOT 46B** 5 Straws **LOT 46D** 5 Straws



SEMEN 4 PACKS OF 5 UNITS  
**BASIN TRUE VALUE 3017**

AAA 20622753 3017 JAN 11 2023

**BASIN TRUE GRIT 1021**

Square B True North 8052 X Basin Camilla 9044

**BASIN LUCY 1177**

Basin Rainmaker 8584 X Basin Lucy 9173

EPD BW -1.1 WW 73 YW 135 MILK 33

JIMMY JOE HENDERSON

Stored at BOVIGEN

**LOT 46E** 5 Straws **LOT 46G** 5 Straws

**LOT 46F** 5 Straws **LOT 46H** 5 Straws









## DIVERSITY WITH MORE QUALITY

Our Simmental section has more than ever. If your looking for the piece to the puzzle we have it. Fulblood/ Red/ Black we have it covered. Theres a reason this breed grows in popularity daily. Big stout beef cattle that have been designed to perform. Freeze being different to most sales, we feel we have instrumental genetics to put forth into any operation that will excel.

---

# INTRODUCING THE SIMMENTAL DIVISION







**FLUSH**  
**RENDEZVOUS CHARLENE 457G**

**SHE HAS ALL THE LOOKS WHILE BEING AN ELITE PRODUCER**

One of the most exceptional Dispersal sales within our time was the Rendezvous sale the first part of last December. On 590 head the average was \$9300 per nose. The most recognized and highest priced female of the entire sale was 457G. In particular the Charles daughters were in extreme high demand. But when you sort it down to amongst the elite, 457G rises to the top. Unbelievable colour pattern and dark with no white appearing on any legs, and don't doubt her ability to manufacture great cattle with sons at top programs and at the front of the sale order when it was their turn. We feel 457G is the next level to our fulblood program and wait to get her in the donor pen.

**Terms : Selling the right to flush guaranteeing 6 embryos with an open top**



- 1 \$75,000 Sire LHVS Charles 29C
- 2 \$14,000 Son AIA 457K sold to Chase Trautman in '23
- 3 \$16,500 Son AIA 457L sold to Kotowich Evergreen in '24
- 4 Daughter Rendezvous Chelsea 176J



**FF**  
**LOT 47**

1294062 AIA 457G JAN 29 2019

**LHVS CHARLES 29C**

Southseven Mr Adonis 96Z X LHVS Ms Lockhart 91X

**RENDEZVOUS MS HEMI 191D**

NUG Hemi 333A X Rendezvous 450U

EPD BW 5.7 WW 80.3 YW 117.7 MILK 40.8

**ROCKY MEADOW RANCH**





# ANCHOR "T" **LEGEND** 7H SEMEN

Limited semen remains on one of the most influential fulblood bull in the history of Canadian Simmental. Legend adds colour, thickness, docility and overall body mass that every cowman demands. Exportable Canada & USA.

Stored at EASTGEN and ALTA

**F**  
**LOT 48**  
**SEMEN**

5 STRAWS

415161    ATFR 7H    JAN 3 1998

## ANCHOR "T" METRO 4E

Metro X Gisela

## ANCHOR "T" HELGA 10Y

Westdrums Andrew X Anchor "T" Frieda 2T

EPD   BW 2.1   WW 78.9   YW 104.2   MILK 36.3

FERME GAGNON





1

Francis Gagnon

- 1 FGAF Kananaskis 011L Sold to Snowdame Farms
- 2 FGAF Petra 026L in herd

**NAC PANTHER 133J SEMEN**

Panther is our new and exciting herd sire that we are pleased to work with. He seems to reduce birthweight, add some thickness and give his nice dark red color to his progenies. Not every day you find a fleck bull of this quality with a CE over 14. Watch for his sons who will highlight our annual bull sale next march. We sold one of her first daughter last September as one of the highseller to Snowdame Farms. Panther also sire probably our best heifer to date, FGAF Petra 026L. He is new to the industry and is potential is limitless. Don't miss the opportunity to acquire his genetic to your herd. *Semen is CDN and US qualified*

**LOT 48A** 5 Straws Stored at **HEARTLAND**

**LOT 48B** 5 Straws



**LOT 48A-B SEMEN**

1366769 NAC 133J FEB 1 2021

**SKYWEST FUGITIVE**  
Kuntz Duramax 12D X Skywest Betty

**MI MS DALLAS 39D**  
Aplx Axel 5Z X MS MI Abigail 33A

EPD BW 0.2 WW 65.3 YW 95.6 MILK 36.0

**FERME GAGNON**





**LOT 49A-B**

**EMBRYOS**

**EMBRYOS PROSTOCK **KIM** 261Y**

In a business that always seems to have a new and emerging flavor of the month, it is of high significance to have a mainstay donor cow that commands attention and conversation. We truly feel that Kim 261Y is one of the most exemplary, irreproachable polled full blood donor cows in the industry today, with a flush this past fall selling for \$24,000. Her reputation precedes herself as the mother of the \$110,000 Double Bar D Milsap, who sold to Virginia Ranch and now resides at SkyWest Farms. The hype around Milsap this past summer at the World Simmental Sale was real, and saw semen fetch \$4,000 a unit. February Freeze is your opportunity to capitalize on the moment and obtain a full sibling to Milsap with the Motown embryos. A daughter of our \$100,000 selection Anchor D Krush also sold at the World Simmental Sale, bringing \$15,000 to Rafter 4T. We have been extremely impressed with Krush, as he has accomplished everything and more for us. Unfortunately, we lost him this past breeding season due to an injury, which only makes offerings like this more valuable as they become rarer and scarce.

1135521    RLD 261Y    SEPT 22 2011

**TTU CANYON**  
Sunny Valley Sargent 24S X BHR Lismar R029

**LCF KIM 343U**  
DDD Broadway G534 X Little Creek Kim 222K

EPD    BW 2.8    WW 67.5    YW 88.6    MILK 29.3

**DOUBLE BAR D**



# EMBRYO PAIRINGS



3 EMBRYOS

**LOT 49A**

**ANCHOR D MOTOWN 865E**

FGAF French Attack 010C X FGAF Precious Thing 402T

Stored at **BOW VALLEY GENETICS**



- 1 Full sibling to Embryos - Double Bar D Milsap 271H who sold to Virginia Ranch for \$110,000
- 2 \$15,000 Krush Daughter to Rafter 4T



3 EMBRYOS

**LOT 49B**

**ANCHOR D GARREN'S KRUSH 524K**

BLL Creed 950G X Anchor D Garren's Shenzi 524G

Stored at **BOW VALLEY GENETICS**







# MOTOWN

**ANCHOR D 865E SEMEN**

Motown has surpassed all expectations and more with progeny surfacing to the top of our annual sale. But one of Motown's best efforts in the popular Milsap bull that now calls Skywest Simmentals home. He was a past \$110,000 sale bull and we are proud to have bred him. Look for Motown to keep them dark colour, easy fleshing and good footed. A bull we sure like to use and will continue to for some time. **CAN qualified**



1

1 Son Double Bar D Milsap 271H

Stored at **ALTA GENETICS**

- LOT 50A** 5 Straws
- LOT 50B** 5 Straws
- LOT 50C** 5 Straws

- LOT 50D** 5 Straws
- LOT 50E** 5 Straws

**LOT 50A-E**

**SEMEN**

1248299 ZDS 865E DEC 25 2017

**FGAF FRENCH ATTACK 010C**

Sibelle Dirty Harry 25Z X Virginias Jane West

**FGAF PRECIOUS THING 402T**

R-Five Maltese X FGAF Shanti 121P

EPD BW 4.5 WW 84.6 YW 117.2 MILK 27.2

**DOUBLE BAR D**





# KRUSH

## ANCHOR D GARREN'S 542K SEMEN

**POLLED.** Krush was the \$100,000 high seller from Anchor D as he has become a farm fav around here with his smooth polled head, great disposition and overall phenotype. His soggy made appearance in a stout muscular pattern has been transformed into his calf crop which will be a big part of our upcoming bull sale the end of February. Krush calves easy, is sired by one of the best fullblood bulls in the world and has surpassed all our expectations with his mother being regarded as the top producer of the Anchor D program. Only very limited semen has been released with plans of holding it tight for our own program. **CAN & US Qualified.**

Stored at ALTA

**LOT 50F** 5 Straws

**LOT 50I** 5 Straws

1 Son Double Bar D Krush 21M

2 Son Double Bar D Krush 26M

**LOT 50G** 5 Straws

**LOT 50J** 5 Straws

**LOT 50H** 5 Straws



**FF**  
**LOT 50F-J**  
**SEMEN**

1394831 ADR 524K JAN 10 2022

### BLL CREED 950G

Double Bar D Confidence 179D X Bee Suzette 478B

### ANCHOR D GARREN'S SHENZI 524G

FGAF French Attack 010C X Garren's Jezebel 24C

EPD BW 2.5 WW 84.8 YW 114.9 MILK 39.7

DOUBLE BAR D





W-C





EMBRYOS

# LOT 51A-C

1316665 GIBS 16G MAR 24 2019

## GIBBONS JEREMIAH

MFI Whistler 47L X RHY Evie 62C

## OAKVIEW BROOKLYN 125B

Champs Romano X Oakview Miss Sadie 20S

EPD BW 8.0 WW 88.8 YW 125.0 MILK 38.1

MCCONNELL FARMS

# EMBRYOS GIBBONS BROOKE 16G



Brooke 16G is a past \$39,500 graduate of Freeze as last year she drew attention from far & wide selling to us to begin our purebred cattle venture. Her very dark colour, heavy pigmentation and superior udder was what we really admired of her. Brooke is a big proud female with thickness and power to produce. In 2025 we are expecting multiple ET calves to expand our herd. We mated her to Synergy who comes as a hard to obtain sire with progeny selling at Virginia Ranch for outstanding evaluations. Also the chance to use Zander was a choice we sure are excited about as his daughters are some of the best within the fullblood fraternity. Expect dark colour, growthy cattle backed by superior cow.

- 1 Dam Oakview Brooklyn 125B
- 2 Embryo Sire Sibelle Pol Synergy 18F
- 3 Embryo Sire Elm Tree Zander 11Z



## LOT 51A 3 EMBRYOS

EMBRYO LOT X SYNERGY 18F

### SIBELLE POL SYNERGY 18F

Sibelle Spartacus 8A X Sibelle Pol Crocus 20D

Stored at HEARTLAND

## LOT 51B 3 EMBRYOS

EMBRYO LOT X SYNERGY 18F

### SIBELLE POL SYNERGY 18F

Sibelle Spartacus 8A X Sibelle Pol Crocus 20D

Stored at HEARTLAND

## LOT 51C 3 EMBRYOS

EMBRYO LOT X ZANDER 11Z

### ELM TREE ZANDER 11Z

Crossroad Radium 789U X RRV Ulena 2U

Stored at HEARTLAND





W-C

# LUMBER

13L SEMEN

**KINDRED SPIRIT**

Lumber has captured the attention many for his incredible dark colour, Homo polled and length of body. He was the \$56,000 high seller in Ontario this past fall with multiple requests for semen. His gentle nature and big solid feet and loose hide has us excited to get him into use. The polled Fulblood craves something different and we feel Lumber is here to deliver.  
**Homo Polled - Non Dilutor**

**LOT 52A** 5 Straws

**LOT 52B** 5 Straws

**LOT 52C** 5 Straws

**LOT 52D** 5 Straws

Stored at ALTA



W-C



**LOT 52A-D**

**SEMEN**

P1438498 KSC 13L FEB 2 2023

**BAR PS HOMO POL ARTIST 5H**

Bar P S Pol Architect 1D X SSS Caroline Silverado

**ANTRIM JASMINE 29J**

Black Gold Mr Adonis 91F X Antrim Ms Pol 26Y

EPD BW 3.9 WW 75.1 YW 108.7 MILK 34.1

**B BAR C SIMMENTALS**





# LRX **BORDEAUX** 15L SEMEN

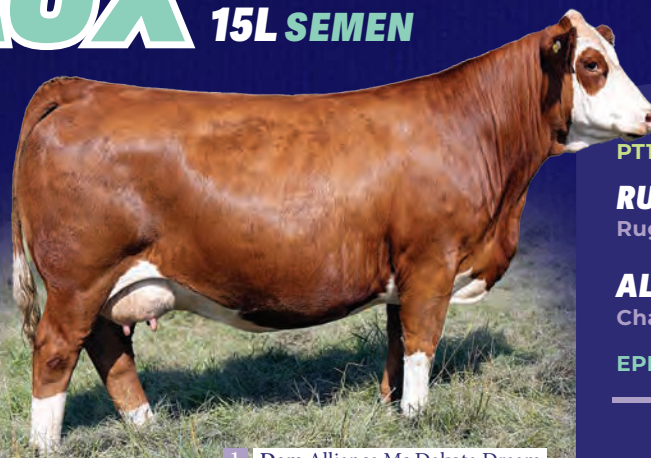
- High selling bull out of the Robb bull sale that has the dark colour and frame we want
- Adequate at birth, large testicles and superior mother
- Great disposition and noted as one of the best raise by the Robb family
- Homo polled - non Dilutor      Stored at **BOVIGEN**

**LOT 53A** 5 Straws

**LOT 53B** 5 Straws

**LOT 53C** 5 Straws

**LOT 53D** 5 Straws



1 Dam Alliance Ms Dakota Dream



## **LOT 53A-D** SEMEN

PT1435845    LRX 15L    JAN 9 2023

### **RUGGED R BORDEAUX 0029H**

Rugged R Bellagio 5057C X DT Hillary 390D

### **ALLIANCE MS DAKOTA DREAM**

Champs Bravo X Alliance Special's Dakota

EPD    BW 6.1    WW 77.2    YW 107.6    MILK 29.6

**ROCKY MEADOWS RANCH**





- 1 Daughter Miss R Plus 2260K, at JP Cattle Co.
- 2 \$150,000 Son R Plus Yuma 9087G
- 3 \$130,000 Daughter Miss R Plus 1083J

# MISS R PLUS 3007A OFFERING THE RIGHT TO FLUSH



Regarded as the sacred cow from the legendary R Plus Dispersal where her daughter brought a whopping \$130,000, but really no surprise as she had already raised a \$150,000 son in Yuma and a \$43,000 daughter at Meadow Acres. Now she has 2 sons leading off our bull sale at the end of the month that have created a stir as well. 3007A is landmark female. A pleasure to own and very fertile. **Offering the right to flush in March / April this spring at Transova where results have been very good. Terms - Guaranteeing 6 Grade A Embryos with an open top with the flush to be completed at Transova.**

805833 LRPS 3007A JAN 25 2013

**R PLUS HARD ROCK 145X**

Foxy Rockstar X Miss R Plus 8014U

**MISS R PLUS 1142Y**

SAJ Red Equalizer 7U X Miss R Plus 8043U

EPD BW 3.5 WW 73.6 YW 112.0 MILK 23.2

ELLINGSON SIMMENTAL







1 Son Weplers Eight Ball 168M



<sup>W-C</sup>  
**MAF FIRSTBASE 168F**

**THE IDEAL SIMMENTAL COW; POWERFUL, MATERNAL, FUNCTIONAL**  
 New to our donor battery but deservedly so, the first opportunity to acquire genetics from our pick of the famous Meadow Acres dispersal. First base emulates the ideal simmental cow to us, so bold sprung and powerful yet maternal and functional. The perfect foot that sets down square and true with a high quality udder and ideal teats. 168F has a two year old Betts daughter that just entered production that is the type of female you get excited to go to the barn to see, one of the untouchables at our place. Last fall we offered First bases natural bull calf by Hannibal now known as Eight Ball in the OASC where he drew interest from all over North America at 9 months of age. He commanded \$35,000 to a powerful syndicate of Black Gold, Wallgren, Greenwood and Ivory Downs. Eight ball has a bright future as a big time calving ease sire who has already double their investment in exclusive semen sales. Your opportunity to flush the anchor of our red cows to the sire of your choice. Firstbase can be flushed mid March or IVF'd early summer when rebred.  
**Guarantee 6 embryos, open top**

**FF**  
**LOT 55**  
**FLUSH**

1235241    MAF 168F    FEB 1 2023  
**IPU RED DEPUTY 25C**  
 Kuntz Sheriff 8A X IPU 56U Ms. Red Liner 81a  
**MAF FIRSTBASE 147D**  
 MAF R Horizon 7Y X LFE RS Firstbase 138Y  
 EPD   BW 0.7   WW 83.1   YW 118.5   MILK 12.8

WEPPLER CATTLE CO.





# FRKG ALPHA 311L SEMEN

FRKG Alpha 311L the lead off front pasture high selling bull at the 2023 Heartman Cattle co bull sale where he sold for a record \$700,000 to a aggressive group of Simmental Enthusiasts.

Stored at BOVIGEN

- 1 Maternal Sister FRKG 11K
- 2 Maternal Sister FRKG 12K
- 3 Maternal Brother FRKG 948K



- LOT 56A** 5 Straws
- LOT 56B** 5 Straws
- LOT 56C** 5 Straws
- LOT 56D** 5 Straws
- LOT 56E** 5 Straws
- LOT 56F** 5 Straws
- LOT 56G** 5 Straws
- LOT 56H** 5 Straws
- LOT 56I** 5 Straws
- LOT 56J** 5 Straws



ASA 4265092 311L JAN 22 2023

**STCC TECUMSEH 058J**  
VCL Foresight X HF Serena

**HCCO COUNTESS 174F**  
WS Pilgrim H182U X BIZ Countess 174Y

EPD BW 4.9 WW 75.3 YW 100.0 MILK 16.2

CLARKE FAMILY FARMS INC  
JON-ERN FARMS LIMITED





SFI Mile High Remedy L31 that was selected out of the Schaake Farms 2023 Grand Champion Pen of Bulls at the 2023 National Western Stock Show



1 Embryo Sire SFI Mile High Remedy L31  
 2 Picture Caption Here  
 3 Picture Caption Here

# ENDLESS WHISKEY

**DUNRAVENS**

**EMBROS**

Our lead off front pasture cow at Clarke Family Farms Inc. This cow is the kind to keep a guy in business, Big power and lost of length and eye appeal, real neat fronted and lots of rib and middle, great udder and teat size. A power house cow!

She raised one of our lead off heifers Clarke Whiskey 16J in our inaugural bull and heifer sale that sold to Jon-Ern Farms Limited and has turned into be their lead off Donor cow, She was crowned the 2023 CYSA Res. Champion Female. Embryo's are mated to our 2 new Herd Sires!

Stored **ON THE FARM**, can ship to a central location, please contact for info



**LOT 56K** 3 EMBRYOS

EMBRYO LOT X FRKG ALPHA 311

**FRKG ALPHA 311L**

STCC Tecumseh 058J X HCCO Countess T74F

**LOT 56L** 3 EMBRYOS

EMBRYO LOT X SFI MILE HIGH REMEDY

**SFI MILE HIGH REMEDY L31**

SO Remedy 7F X HILB/JRA Elsa 710E



**LOT 56K-L**

**EMBRYOS**

ASA 4243653 KDL 19E JAN 2 2017

**TNGL GRAND FORTUNE Z467**

SS Ebony's Grandmaster X AJE/HS/MBCC Hope Floats

**IRCC WHISKEY GIRL 910W**

TNT Gunner N208 X Indian-River Mona 203M

EPD BW 5.6 WW 79.8 YW 119.8 MILK 26.2

CLARKE FAMILY FARMS INC.





1 Embryo Sire WHF/JS/CCS Double Up G365  
2 Embryo Sire PVF Marvel



# FANCY PANTS

## KADE'S 21F EMBRYOS

21F is a cow that has had a large fan base since a young age. Showed as a calf, Grand Champion Simmental female at the JR Beef Expo in London and 4th overall Supreme female. Turned into production with a picture perfect udder, soft made, moderate frame package that's well designed from every angle. Awesome footed, great disposition with cow family bred up here standing the test of time. First daughter sold through the OASC for \$25,000. Good pal of ours Toby Noble toured this fall and seen 21F on pasture, she now calls BlackGold Simmental home and we look forward to working with them!

*Homo Polled, Homo Black*

Stored at BOVITEQ

### LOT 57A 3 EMBRYOS

EMBRYO LOT X DOUBLE UP G365

#### WHF/JS/CCS DOUBLE UP G365

W/C Double Down 5014E X WHF Summer 365C

### LOT 57B 3 EMBRYOS

EMBRYO LOT X DOUBLE UP G365

#### WHF/JS/CCS DOUBLE UP G365

W/C Double Down 5014E X WHF Summer 365C

### LOT 57C 3 SEXED EMBRYOS

EMBRYO LOT X COLEMAN ROCK 7200

#### PVF MARVEL 9185

PVF Blacklist 7077 X PVF Missie 5245



## LOT 57A-C

### EMBRYOS

1259609 KADE 21F FEB 14 2018

#### CCR COWBOY CUT 5048Z

Triple C Singletary S3H X CCR MS 4045 Time 7322T

#### KADE'S PRIDE N JOY 21B

Elforado Destiny X Kades Pride 31Y

EPD BW 3.5 WW 83.4 YW 121.6 MILK 17.2

EARLEY LIVESTOCK





# CMS **SODA POP** 325B EMBRYOS

What more can be said about the legendary "soda". A female the at 11 years of age looks and produces like a 4 year old. As every year passes she continuously adds more and more high sellers to her resume. In the fall of 2024 she sold 5 daughters that averaged just over \$18,000. A fresh mating that's never been offered before is the 3 female eggs by the popular blood red WFL Mountainview, a mating you

will want to retain for incredible herd bull making mommas. The proven mating to Relentless that has sired numerous show winners and donors. Also 3 sexed embryos by the outcross OMF Journeyman, a neat mating with an incredible EPD chart. Take your pick and add some Soda's to your program

Stored at **BOVITEQ**

## **LOT 58A** 3 SEXED EMBRYOS

EMBRYO LOT X W/C RELENTLESS 32C

### **W/C RELENTLESS 32C**

Yardley Utah Y361 X Miss Werning KP 8543U

## **LOT 58B** 3 SEXED EMBRYOS

EMBRYO LOT X OMF JOURNEYMAN J24

### **OMF JOURNEYMAN J24**

Mr Sr Mic Drop G1534 X OMF Deka D23

## **LOT 58C** 3 SEXED EMBRYOS

EMBRYO LOT X WFL MOUNTAIN VIEW 4J

### **WFL MOUNTAIN VIEW 4J**

KWA Red Italian 122E X WFL 9072 Ms Red Doll 913G

- 1 Embryo Sire W/C Relentless 32C
- 2 Embryo Sire OMF Journeyman
- 3 Embryo Sire WFL Mountain View 4J

# LOT 58A-C EMBRYOS

1121295 CMS 425B JAN 25 2014

### **DRAKE POKER FACE 2X**

JS Sure Bet 4T X Drake Tula 1R

### **HPF CREAM SODA Y010**

JF Milestone 999W X IC Cream Soda R56

EPD BW 4.6 WW 82.5 YW 125.2 MILK 20.3

WEPPLER CATTLE CO.





**DOUBLE BAR D** **LINCHPIN** **431K SEMEN**

**FF**  
**LOT 59A-E**  
**SEMEN**

The '24 Champion Bull of Ag Ex, Senior Champion Simmental Bull at Canadian Western Agribition and by popular demand we offer the first semen on Linchpin. His mother was a past \$30,000 purchase from Deeg who is now in the donor pen. This Lawmaker son has length, mass and hair with great feet. We plan to utilize him heavy here at DBD as we feel he is right for the times.

Stored at **BOVIGEN**

- LOT 59A** 10 Straws     **LOT 59D** 10 Straws
- LOT 59B** 10 Straws     **LOT 59E** 10 Straws
- LOT 59C** 10 Straws

1 DBD Linchpin at Manitoba Ag Ex



1398899     RLD 431K     JAN 13 2022

**KWA LAW MAKER 59C**  
 CDI Authority 77X X KWA Ms Rock 14X

**DEEG MS ZENA 69G**  
 RF Capacity 742E X Twin-Chief Zena 819Z

EPD   BW 3.5   WW 74.5   YW 123.7   MILK 23.7

**DOUBLE BAR D**





SEMEN 5 PACKS OF 5 UNITS  
**SVS CAPTAIN MORGAN 11Z**

**LOT 59G-K**

766965 TLAS 11Z JAN 3 2012

**HARVIE JDF WALLBANGER111X**

SHS Enticer PIB X JDF Pepsi 61U

**SUNNYVALLEY BLK JENNA 88U**

RLA Redstream 152S X WLB 32H Jenna 360R

EPD BW 5.4 WW 89.3 YW 144.5 MILK 22.3

**DOUBLE BAR D**

**LOT 59G** 5 Straws

**LOT 59H** 5 Straws

**LOT 59I** 5 Straws

**LOT 59J** 5 Straws

**LOT 59K** 5 Straws

Standing the test of time is an understatement when talking about Captain Morgan. This bull just flat works. One of our top bulls this spring in our sale is a baldy Morgan son pictured that looks the part. Also at the recent R Plus dispersal, one of the top selling bull calves was a Morgan. He adds thickness, hair and great feet with phenomenal disposition. **CAN qualified**

Stored at ALTA GENETICS



SEMEN 2 PACKS OF 5 UNITS  
**W/C BANKROLL 811D**

**LOT 59L-M**

1217569 RLD 811D JAN 30 2016

**W/C LOADED UP 1119Y**

Remington Lock N Load 54U X Aubreys Black Blaze III

**MISS WERNING KP 8543U**

WAGR Dream Catcher 03R X Miss Werning 534R

EPD BW 1.4 WW 77.6 YW 108.8 MILK 20.4

**DOUBLE BAR D**

**LOT 59L** 5 Straws

**LOT 59M** 5 Straws

Stored at ALTA GENETICS

Banroll in person will stop you in your tracks. Muscular, athletic, well built, excellent feet, with a look and presence that is second to none. His calves continue to exceed exceptionally high expectations. Low birthweights, high growth, and sound. This sons - rugged and powerful and the females - angular with that exceptional maternal look.







# WHEATLAND **DIMENSIONAL** 1147J

Dimensional is the \$200,000 high seller via Wheatland and past National Champion Bull. His sons and one pick of his daughters have been extremely well received. He is the power baldy bull the breed is searching for. He can move like a cat and is a mature 3000 lbs bull. You want to add pounds and frame to your cattle, use him. He has the hair and Dimension to easily get the job done. Semen has been held close, not many opportunities will arise in the future.

Stored at **BOVIGEN**

- 1 Pictured as a two year old
- 2 \$90,000 Dimensional heifer at Sandeen

**LOT 60A** 5 Straws

**LOT 60B** 5 Straws

**LOT 60C** 5 Straws

**LOT 60D** 5 Straws

**LOT 60E** 5 Straws

## **LOT 60A-E** **SEMEN**

1382130 LER 1147J FEB 9 2021

### **CKCC LD DIMENSION 8965**

MR TR Hammer 308A ET X WF Forever Lady Z165

### **JPCC MISS FOXY 115F**

Wheatland Royal Flush 435 X JPCC Foxy Morgan 29B

EPD BW 5.0 WW 101.8 YW 151.6 MILK 20.9

JP CATTLE CO.





# JPCC SHEILA 95F EMBRYOS

95F is a pillar in our program, with proven track record as her sons were all in the front pens of our bull sale lineup. She is one of the many Royal Flush daughters we enjoy back to the famed Shelia cow family at Lewis. Look lots more of 95F as she is a crowd pleaser.

**Guaranteed one (1) pregnancy if implanted by a certified technician.**

- 1 Full Sib to Embryos, JPCC Element 14L
- 2 Full Sib to Embryos, JPCC Dimensional 39L

Stored at **BOVIGEN**



3 EMBRYOS **LOT 60F**

3 EMBRYOS DIMENSIONAL X SHEILA 95F **EMBRYOS**

**WHEATLAND DIMENSIONAL 1147J**

CKCC LD Dimension 8965 X JPCC Miss Foxy 115F

**JPCC SHEILA 95F**

Wheatland Royal Flush 435 X LFE BS Sheila 82A

PE BW 5.7 WW 98.9 YW 145.9 MILK 23.5

JP CATTLE CO.





**RF CERTAINLY FLIRTIN 956G EMBRYOS**

One of the very best Flirt progeny to date, 956G was the highlight and high selling female at the Rose Bowl and Jenna/Flirt event of 2021. We are very pleased and excited to partner with Ranciers on the exciting, one of a kind female. The Flirt cow family needs no introduction as they are the right kind and continually rise to the top. Here is an excellent and rare opportunity to invest in these elite genetics. **Guarantee one pregnancy if implanted by a certified technician. Embryos are qualified for CAN.**

Stored at **BOW VALLEY GENETICS**

**1** Embryo Sire, RF No Limits 1112J



**RF**  
**LOT 61**  
**EMBRYOS**

**3 EMBRYOS**

**EMBRYOS, NO LIMITS X FLIRTIN 956G**

**RF NO LIMITS 1112J**

R Plus Yuma 9087G X Rust Miss 6217D

**RF CERTAINLY FLIRTIN 956G**

SAJ Red Equalizer 7U X Miss R Plus 8043U

**PE BW 4.8 WW 101.4 YW 154.0 MILK 20.1**

**DOUBLE BAR D**

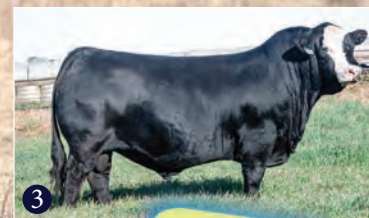




1



2



3

- 1 \$20,000 Daughter, JETS 53H
- 2 Embryo Sire FRKG Alpha 311L
- 3 Embryo Sire Crossroad Dateline 59L



# JETSTREAM **BRIGHT N CLASSY**

**THE LAST EGGS OF CLASSY TO SELL!**

Classy has done so much being a past Royal Champion female amongst a fantastic track record. In the R Plus Dispersal she placed a \$30,000 son to Westway. \$20,000 daughter and we are sure proud of the offspring we have here at our farm. The sires of choice here both offer exclusive new genetics that will benefit Classy. Alpha is the talk of the US and semen bringing \$1000 per straw in Fallsview as he has that added look and presence. Dateline has the chatter, Crossroad cattle just work and we are excited of the potential of what he can do. Either way Classy has the ability to produce and in a baldy package.

Stored at **BOVIGEN**

## **LOT 62A** 3 EMBRYOS

EMBRYO LOT X FRKG ALPHA 311L

**FRKG ALPHA 311L**

STCC Tecumseh 058J X HCCO Countess 174F

## **LOT 62B** 3 EMBRYOS

EMBRYO LOT X DATELINE 59L

**CROSSROAD DATELINE 59L**

RFS Heavy Hitter H45 X TSZ Keepsake 703A

## EMBRYOS

## **LOT 62A-B** EMBRYOS

1123419

JETS 1B

JAN 7 2014

**JF MILESTONE 999W**

TNT Top Gun R244 X MS Maxie Lou M112S

**RTC/JETS UPPER CLASS 40U**

MRL Black Market 47P X RTC/JETS Katie's Star 60S

EPD BW 4.3 WW 79.6 YW 108.9 MILK 22.6

ANDREW CATTLE





9 \$82,000 Son R Plus Fleetwood 1012J





1 Embryo Sire RF Caliber 014G  
 2 Embryo Sire WHF/JS/CCS Woodford J001  
 3 Embryo Sire Dimensional 1147J  
 4 Embryo Sire MR HOC Broker

5 Embryo Sire SO Remedy 7F  
 6 Embryo Sire W/C Relentless 32C  
 7 Embryo Sire R Plus Estevan 2162K  
 8 Embryo Sire FRKG Alpha 311L

# MISS R PLUS 9495G

1296729 LRPS 9495G APR 9 2019

## R PLUS 7141E

R PLUS 5015C X MISS R PLUS 9100W

## MISS R PLUS 4005B

Wheatland High Octane1 69Y X ACS Black Magic 264Z

EPD BW 4.4 WW 91.3 YW 134.0 MILK 19.7

### ALTON CENTURY FARMS

9495G was the lead off cow on Day 2 of the history making R plus Dispersal. This extremely fertile female is a tank and is the mother of the \$82,000 Maxwell herdsire Fleetwood and we have 2 daughters retained in the herd with multiple offspring arriving here in early 2025. The herd bull battery lineup we have on her is our driving force on mating her to the most prominent sires we can get our hands on. As we feel any of these matings will be genetic improver, we stress the rare and hard to come by Broker semen we have included as well.

Stored at **BOVITECH**

### LOT 63A 5 EMBRYOS

EMBRYO LOT X RF CALIBER

#### RF CALIBER 014G

NGDB Structure 34D X RF Not Just A Flirt 404B

### LOT 63E 3 EMBRYOS

EMBRYO LOT X SO REMEDY 7F

#### SO REMEDY 7F

HPF/HILL Uprising C104 X B&K Cream Soda 8D

### LOT 63B 3 EMBRYOS

EMBRYO LOT X WOODFORD J001

#### WHF/JS/CCS WOODFORD J001

EGL Firesteel 103F X WHF Summer 365C

### LOT 63F 3 EMBRYOS

EMBRYO LOT X W/C RELENTLESS 32C

#### W/C RELENTLESS 32C

Yardley Utah Y361 X Miss Werning KP 8543U

### LOT 63C 3 SEXED FEMALE EMBRYOS

EMBRYO LOT X DIMENSIONAL 1147J

#### WHEATLAND DIMENSIONAL 1147J

CKCC LD Dimension 8965 X JPCC Miss Foxy 115F

### LOT 63G 5 EMBRYOS

EMBRYO LOT X R PLUS ESTEVAN 2162K

#### R PLUS ESTEVAN 2162K

CMS Sochi 307A X MISS R PLUS 0017H

### LOT 63D 3 EMBRYOS

EMBRYO LOT X HOC BROKER

#### MR HOC BROKER

SVF Steel Force S701 X JM BF H25

### LOT 63H 3 EMBRYOS

EMBRYO LOT X FRKG ALPHA 311L

#### FRKG ALPHA 311L

STCC Tecumseh 058J X HCC0 Countess 174F





# LFE ZACH TOP

3186K SEMEN

Homo Polled- Hetro Blk- Zach Top was the lead blk Sim bull at the 2024 Lewis Farms bull sale. Carrying as much mass and thickness as any blk bull available last spring, his some what different pedigree and boasting a big WW is what made us had to have him. This will be the only semen released for the 2025 breeding season as we eagerly await his first progeny here at RMR & LFE.

Stored at BOVIGEN

**LOT 64A** 5 Straws

**LOT 64D** 5 Straws

**LOT 64B** 5 Straws

**LOT 64E** 5 Straws

**LOT 64C** 5 Straws



# LOT 64A-E

SEMEN

1445105 LFE 3186K MAY 22 2022

## LFE RIP 3068G

LFE Beast Mode 305D X LFE BS Just Peachy 125D

## LFE BS MS CHOCHRANE 2177C

LFE The Dark Night 350U X LFE BS Ms Cochrane 2172A

EPD BW 6.5 WW 86.5 YW 123.7 MILK 21.2

ROCKY MEADOW RANCH & LEWIS FARMS





# DBD CARBON CAPTURE 721K

Homo Polled Hetro Black  
 Massive in every way is the first thought that comes to mind when you first glance at 721K. He was the \$80,000 top selling bull of the Dimler Bull Sale this past spring. Large testicles, big feet, huge backed and hair in a long bodied package with a center body you cant miss. Back by a fault free cow, this is the first semen to be released to the public. Power with modest BW is the way these Sim cattle are bred to perform, 721K checks all the boxes!

Stored at BOVIGEN

1 DBD Carbon Capture 721K



- LOT 65A** 5 Straws    **LOT 65D** 5 Straws
- LOT 65B** 5 Straws    **LOT 65E** 5 Straws
- LOT 65C** 5 Straws    **LOT 65F** 5 Straws



**LOT 65A-F**  
**SEMEN**

1406603    RLD 721K    JUNE 4 2022

**DOUBLE BAR D LAWFUL 420F**  
 MFR Black Nectar 105A X Double Bar D Excel 421D

**MFR BLACK NECTAR 105A**  
 EDN Punch Out 50W X MFR Redfire 945W

EPD    BW 3.0    WW 77.3    YW 116.6    MILK 30.3

---

DOUBLE KL, DOUBLE BAR D





*Laramie*





# EMBRYOS **STF TRENDY** BT26

## A LOOKER FROM EVERY ANGLE

A daughter off the well known STF Onyx 451W. Trendy is a full sister to Royal Affair. This exceptional red donor cow is extremely big ribbed, high capacity that is super cool and well designed from every angle. Excellent structured and awesome footed. The first trio of Trendy Daughters to hit the open market averaged \$16,500 in Fallsview. Here's your opportunity to purchase full sib matings to the 2023 Royal Champion Bull by the well known "Cobra" or the now deceased dark red bull Limitless. Maternal sister was recently Champion Simmental Female at the Royal!

Stored at **BOVITEQ**

### **LOT 66A** 3 EMBRYOS

EMBRYO LOT X WHF LIMITLESS B011  
**WHF LIMITLESS B011**

JF Milestone 999W X WHF Sierra 245S

### **LOT 66C** 4 EMBRYOS

EMBRYO LOT X WHF LIMITLESS B011  
**WHF LIMITLESS B011**

JF Milestone 999W X WHF Sierra 245S

### **LOT 66B** 3 EMBRYOS

EMBRYO LOT X WHF LIMITLESS B011  
**WHF LIMITLESS B011**

JF Milestone 999W X WHF Sierra 245S

### **LOT 66D** 3 EMBRYOS

EMBRYO LOT X NCB COBRA 47Y  
**NCB COBRA 47Y**

LFE Viper 455U X NCB Miss Dream 22T



3

- 1 Daughter Kade's Trendy 54L
- 2 Daughter Kade's Snazzy 25K
- 3 Daughter LHF Lady Gaga 105L
- 4 Embryos Sire WHF Limitless B011
- 5 Embryos Sire NCB Cobra 47Y



4



5

# LOT 66A-C

1308728 KADE BT26 MAR 11 2014

### **REMINGTON LOCK N LOAD 54U**

Remington On Target 2S X Bar 15 Miss Knight 78E-51G

### **STF ONYX 451W**

STF Dominance T171 X GCF Miss Caliente

EPD BW 2.1 WW 63.7 YW 99.2 MILK 13.0

EARLEY LIVESTOCK





W-C



1 Love Story's Dam Springcreek Joy 47E  
2 Embryos Sire R Plus Estevan



# WEPPLERS **LOVE STORY** 47L EMBRYOS

A HIGH SELLER THAT MAKE EVERYONE FALL IN LOVE WITH HER

Love Story 47L was a past \$31,000 Fallsview high seller from the Weppler program that looks every bit like her picture. Incredible center body and backed by a superior mother who carry a white strip down the front of their face. Betts cattle have that extra rear gear like Love Story and we sure want to make note of her great hair coat. Estevan has surpassed all expectations with big feet and dark colour. Course Walk the Line cattle are nothing short of solid so we feel either way or both will be a neat way to ring in 2026.

Stored at **BOVITECH**

## **LOT 67A** 3 EMBRYOS

EMBRYO LOT X MADER WALK THE LINE

### **MADER WALK THE LINE 92J**

Mader Walk This Way 224B X IRCC Darlin' 613D

## **LOT 67B** 2 EMBRYOS

EMBRYO LOT X R PLUS ESTEVAN 2162K

### **R PLUS ESTEVAN 2162K**

CMS Sochi 307A X Miss R Plus 0017H

1438059 BMW 47L JAN 2 2023

### **SVS BETTS 808F**

BGS/BM Captain Scream 63D X WFL Red Sage 506C

### **SPRINGCREEK JOY 47E**

Springcreek Spark Plug X Springcreek Joy 138Y

EPD BW 2.9 WW 80.5 YW 119.3 MILK 25.9

MANDAN LAKE RANCH





# REMINGTON **MISS KNIGHT** 63U EMBRYOS

Here's your chance to get the last of our embryo inventory on the well known 63U. With the most well known son out of the cow family being none other, the breed changing bull.. lock n load, with 63U being his full sister. She is a breed changer in her own right, with many daughters and granddaughters retained in herd. A direct daughter being the Grand Champion Female in the open Simmental show at the Royal in 2017, and a granddaughter being Grand Champion Female in the open Simmental show at the Royal in 2023. Mated to the well known "Alliance", full sib matings have been well appreciated in the bull pen for us.

## LOT 68A 4 EMBRYOS

EMBRYO LOT X CCLT ALLIANCE 91C

### CCLT ALLIANCE 91C

CCLT Alliance 91C X Remington Miss Knight 63U

EARLEY LIVESTOCK Stored **ON THE FARM**

## LOT 68B 3 EMBRYOS

EMBRYO LOT X TRUE NORTH G71

### LLW CARD TRUE NORTH G71

GSC GCCO Dew North 102C X Cox` S Joys Princess 711E

JIM HENDERSON Stored at **BOW VALLEY**



# LOT 68A-B EMBRYOS

704347 RCCI 63U MAY 13 2008

## REMINGTON ON TARGET 2S

Remington Red Label HR X Drake Soft Touch 15M

## BAR 15 MISS KNIGHT 78E-51G

SV Charlies Applause X Bar 15 Miss Knight 83Y-78E

EPD BW 2.3 WW 69.3 YW 104.6 MILK 18.0

- 1 Embryos Sire CCLT Alliance 91C
- 2 Embryos Sire LLW Card True North G71





1 18J's Dam Kade's Miss Fancy Pants 21F  
2 Embryos Sire Wheatland Bull 388L



**KADE'S FANCY PANTS 18J EMBRYOS**

18J was a sale feature of the OASC Sale in '23 at \$25,000 to anchor the preparation of our Simmental donor pen. That same day she sold a son to Joe Simmons who weaned off at over 900lbs to show 18J's milking ability and effort as 2 year old. Since then she has gone on to be a fertile giant while maintaining a superior look and excellent disposition. One of the main attributes of 18J is her flawless mother who is one of the nicest baldy females you'll run into. 18J is destined for the same future. 18J is matched up with our newest herd sire and the predictable Caliber who's offspring have been very well received.

LOTS 67A&B Stored at **BOVITECH**  
LOTS 67C Stored at **HEARTLAND**

**LOT 69A 5 EMBRYOS**

EMBRYO LOT X WHEATLAND BULL 388L

**LOT 69B 5 EMBRYOS**

EMBRYO LOT X WHEATLAND BULL 388L

**WHEATLAND BULL 388L**

Paw Juan Pablo 121J X Wheatland Lady 92H

**LOT 69C 2 EMBRYOS**

EMBRYO LOT X RF CALIBER 014G

**RF CALIBER 014G**

NGDB Structure 34D X RF Not Just A Flirt 404B

**LOT 69A-C EMBRYOS**

1356720 KADE 18J JAN 21 2021

**RF CAPACITY 742E**

WFL Westcott 24C X RF Famous 409B

**KADE'S MISS FANCY PANTS 21F**

CCR Cowboy Cut 5048Z X Kade's Pride N Joy 21B

EPD BW 3.7 WW 82.2 YW 121.6 MILK 17.7

SHAUN STADNYK





# HFL ERICA 3004L EMBRYOS

3004L is one gorgeous ½ blood female with chrome and added look we have all come to love in these ½ blood cattle. Her excellent mother insures udder quality and land base with all the fundamentals covered. Our new power herd sire Zach Top 3186K from Lewis should be the automatic click for top end females and the type of bulls they line up to bid on. Get running here boys, this is the future in pedigreed cattle.

Stored at **BOVIGEN**

1 Embryo Sire, LFE Zach Top 3186K

## LOT 70A 3 EMBRYOS

EMBRYO LOT X ZACH TOP 3186K

### LFE ZACH TOP 3186K

LFE RIP 3068G X LFE BS MS CHOCRANE 2177C

## LOT 70B 3 EMBRYOS

EMBRYO LOT X ZACH TOP 3186K

### LFE ZACH TOP 3186K

LFE RIP 3068G X LFE BS MS CHOCRANE 2177C



# LOT 70A-B EMBRYOS

1439430 HFL 3004L JAN 4 2023

### HFL RIP 1014J

IPU Bentley 81F X Jackson Rose 23D

### S7R ERICA 8C

R B Active Duty 0010X X S7R 307R Erica 10A

EPD BW 2.9 WW 87.6 YW 135.5 MILK 22.1

ROCKY MEADOW RANCH







## FROZEN OPPORTUNITIES LIKE NO OTHER WHITE SALE

Freeze '25 has the ingredients to make a difference so quickly with the frozen material made for purchase more than ever. The Char line up contains sires people are on the hunt for, from breeders of the finest stock. This is a one stop shop in this breed for elite embryos and semen that again can make a fast difference. Our search for only the best shines bright in this section.

---

# INTRODUCING THE CHAROLAIS DIVISION



# CAPITALIST SIRED EMBRYOS



## MISS PRAIRIE COVE 701E

EMBRYOS MISS

PCC 701E was our pick of the first flush of the infamous PCC 407B donor from Prairie Cove Charolais. She is big topped, powerful, homozygous polled and PA Free. Currently 701E has 2 front pasture daughters in the C2 herd in Manitoba and 2 herdsires - the latest being a Capitalist son for Clegg Charolais in Fairview, AB. Her full sib 748E was an influential donor for Springside who was purchased in the '23 SuperStar Sale by EXL Charolais. NGC Capitalist has taken the Charolais world by storm recently! His absolutely outstanding EPDs, performance and style have breeders across North America hoping to incorporate his genetics in their programs. Semen will remain limited - this is your only chance to add these genetics to your program in Canada for the foreseeable future. The guesswork is done - this mating is proven! Your next herdsire or donor female awaits!

**Embryos are PA Free by pedigree and are Canadian qualified. They are stored at DBK Genetics in Morinville, AB. Shipping costs will be the responsibility of the purchaser.**

Stored at DBK GENETICS



- 1 Embryos Dam PCC 701E
- 2 701E Daughter CEE 116J
- 3 701E Daughter CEE 903G
- 4 Full Sib to Embryos CEE 323L

5 EMBRYOS

**LOT 71**  
EMBRYOS

EMBRYO LOT CAPITALIST X PCC 701E

**NGC CAPITALIST 118J ET**

LT Citation 5228 PLD X M6 New Germaine 599 P ET

**MISS PRAIRIE COVE 701E**

ZKCC Game On 266Z X Miss Prairie Cove 407B

PE BW 0.8 WW 73 YW 141 MILK 32

CIRCLE CEE CHAROLAIS





**CCC WC** **REDEMPTION** 7143 PLD ET SEMEN

Hard to find, Redemption is back! There's probably been more championship stock stemming from Redemption than any other Charolais sire in recent times. He adds look, body and keeps it all wrapped up in a easy calving package.

Stored at ALTA GENETICS

- LOT 72A** 5 Straws    **LOT 72F** 5 Straws
- LOT 72B** 5 Straws    **LOT 72G** 5 Straws
- LOT 72C** 5 Straws    **LOT 72H** 5 Straws
- LOT 72D** 5 Straws    **LOT 72I** 5 Straws
- LOT 72E** 5 Straws    **LOT 72J** 5 Straws

**FF**  
**LOT 72A-J**  
**SEMEN**

MC807399 MARCH 8 2017

**CCC WC RESOURCE 417 P**

LT Rushmore 8060 PLD X WC CCC Blue Girl 1528 P

**WC ROLLS ROYCE 3177 P ET**

TR PZC Rapid Fire 9775ET X WCCC Miss Alliance 428

EPD BW 0.7 WW 73 YW 127 MILK 28

WRIGHT CHAROLAIS





2021

FARMEFAIR  
INTERNATIONAL

2021

FARMEFAIR  
INTERNATIONAL

2021

FARMEFAIR  
INTERNATIONAL

FARMEFAIR  
INTERNATIONAL

2021

FARMEFAIR  
INTERNATIONAL

2021

FARMEFAIR  
INTERNATIONAL

2021

2021

FARMEFAIR  
INTERNATIONAL

2021

FARMEFAIR  
INTERNATIONAL

2021

FARMEFAIR  
INTERNATIONAL





# LOT 73A-B

FC761554 PCC 8507F JAN 15 2018

## M&M OUTSIDER 4003 PLD

LT Long Distance 9001 PLD X M&M Ms Carbine 1567 PLD

## TR MS BERKLY 4711B ET

TR PZC Mr Turton 0794 ET X TR MS Montella 1572Y

EPD BW 0.7 WW 56 YW 114 MILK 23

PRAIRIE COVE CHAROLAIS

Stored at BOW VALLEY GENETICS

# EMBRYOS BRICHE **BERKLY ANN** 8507 PLD ET

## A CHAMPION WHO KEEPS MAKING CHAMPIONS

The most well know Charolais female in the entire Charolais industry, Berkly Ann is a two time Supreme Champion and World Chpion herself. Berkly Ann has went on to produce Champions and highsellers at a rate that has never been seen before in the Charolais world.

Berkly Ann's most recent accomplishment include her daughter Miss Prairie Cove 204K being named Supreme Champion female at Farmfair International and her son PCC Husk 218K being named Grand Champion Charolais Bull along with two of her daughter being high sellers this fall at \$45,000.00 and \$20,000.00. Proving anytime is a great time to own a Berkly Ann

- 1 FarmFair Supreme Champion Daughter
- 2 Embryo Sire WCR Bold Move 168 P
- 3 Embryo Sire RBM Keystone H41
- 4 Embryo Sire SVY Trust 6H



## EMBRYO PAIRINGS



## LOT 73A 4 EMBRYOS

EMBRYO LOT X WCR BOLD MOVE 168 P

### WCR BOLD MOVE 168 P

WC Platinum 8558 P X WCR Ms Remix 9250 P

## LOT 73B 1 PACK WITH 2 EMBRYOS BY KEYSTONE AND 2 EMBRYOS BY TRUST

EMBRYO LOT X RBM KEYSTONE H41

### RBM KEYSTONE H41

LT Rushmore 8060 PLD X RBM Jasmine F251

EMBRYO LOT X SVY TRUST 6H

### SVY TRUST 6H

M6 Bells & Whistles 258 P X SVY Starstruck 409B





Linda

**SKS SUPER PUNCHER 432K SEMEN**

Super Puncher was named the 55th National Champion Charolais bull in N.A.I.L.E. 2023. He was undefeated in the show ring; also winning Fort Worth, State Fair of Texas, and Supreme Champion at North Texas State Fair. Super Puncher is big footed, massive in his structural build and design, and is expressively heavy muscled. It's unique to find a creature this bold and three dimensional that is so balanced, sound, and functional. Maternally he is backed by Madelyn 622, the current number 2 show dam of the year. 622 has 5 different sons and daughters that received Grand or Reserve Grand Champion honors at major livestock shows in 2023/24. Super Puncher's first calf crop suggests that he is breeding true and throwing himself. The first calves have come easy and unassisted and have had big weaning weights and performance. The first two daughters shown were selected: Spring Calf Champion at the American Royal Open and Reserve Grand Champion at the Heart of Texas Jr. shows, respectively. These are the last 20 units of sexed semen to be selling in the foreseeable future - and with daughters like these, you don't want to miss out!

**LOTS 74A-D UNITS ARE SEXED FEMALE**

- |                |          |                |          |
|----------------|----------|----------------|----------|
| <b>LOT 74A</b> | 5 Straws | <b>LOT 74E</b> | 5 Straws |
| <b>LOT 74B</b> | 5 Straws | <b>LOT 74F</b> | 5 Straws |
| <b>LOT 74C</b> | 5 Straws | <b>LOT 74G</b> | 5 Straws |
| <b>LOT 74D</b> | 5 Straws | <b>LOT 74H</b> | 5 Straws |

Stored at ALTA GENETICS



**LOT 74A-E SEMEN**

AICA EM970701 423K FEB 4 2022

**DTR MR BRIGHTSIDE 1107G2**

M&M Outsider 4003 PLD X DTR Miss Turton B500

**G4 MS MADELYN 622**

Big Creek Game Changer 192 PET X WH Miss Maddie 221 PLD

EPD BW -3.4 WW 60 YW 116 MILK 31

SKEANS CATTLE CO., BIG HOUSE SHOW CATTLE, WALKER FARM, FOX HOLLOW FARMS, TRITTMATTER FARMS, & BIG CREEK CHAROLAIS.





**RBM** **KEYSTONE** H41 SEMEN

If you happen to look up past catalogues where Keystone semen has been offered, they concluding sentence to the footnote reads 'We strongly believe that Keystone will outlast many sires, simply because he is able to add real world performance, phenotypic quality, and impeccable structure.' It is a big statement to make, but as more and more progeny command attention throughout Canada in terms of conversation and the elusive high seller status, that claim has been validated and substantiated beyond a reasonable doubt. Keystone has demonstrated the ability to add in tremendous performance, number profiles, and high-quality carcass merit into his progeny, but also inject a donor quality look into females and bulls with shape and presence. Don't be in the woulda-coulda-shoulda category, as this is the last 15 units to sell.

Stored at **ALTA GENETICS**

- LOT 75A** 5 Straws
- LOT 75B** 5 Straws
- LOT 75C** 5 Straws

- 1 \$20,500 high seller sold to Noemi Sanchez
- 2 \$20,000 high seller bull to KFC Farms
- 3 \$26,000 high selling daughter
- 4 \$20,000 high seller to W2 Farms

**LOT 75A-C**  
SEMEN

MC859793 JAN 1 2020

**LT RUSHMORE 8060 PLD**

LT Rio Bravo 3181 P X LT Brenda's Ease 3055PLD

**RBM JASMINE F251**

EC BIG DEAL 979 PLD X EC Jasmine 561 PLD

EPD BW -0.4 WW 77 YW 132 MILK 27

**CK SALES & CONSULTING**









# LOT 76A-C

FC715055 PCC 5013C JAN 21 2015

## TR MR FIRE WATER 5792RET

Thomas OAHE Wind 0772ET P X Thomasswissersweet1764ET

## THOMAS MS IMPRESSIVE 0641

JWK Impressive D040 ET X BCI Miss Verylimit 6033P

EPD BW -0.8 WW 51 YW 101 MILK 29

PRAIRIE COVE CHAROLAIS

# EMBRYOS PZC LILY 5013 ET

The original two time Supreme Champion female and Champion of the World. New matings to the champion herself and maker of champions. Proven at Farmfair and Agribition with the Reserve Champion female at both shows being EVF Lily 338L a Lily granddaughter that was a crowd favorite at every show she went to , congratulations to Eagle Valley and Harvie Ranching.

Lily makes the kind of cattle that win at the highest level and turn into wonderful cows that give added return on investment.

Stored at BOW VALLEY GENETICS

- 1 Embryo Sire PCC Bourbon 118J
- 2 Embryo Sire SVY Trust 6H
- 3 Embryo Sire TR Mr Diablo 2742Z ET

## EMBRYO PAIRINGS



### LOT 76A 3 EMBRYOS

EMBRYO LOT X PCC BOURBON 118J

#### PCC BOURBON 118J

CCC WC Redemption 7143 X BRCHÉ Berkly Ann 8507

### LOT 76B 3 SEXED EMBRYOS

EMBRYO LOT X SVY TRUST 6H

#### SVY TRUST 6H

M6 Bells & Whistles 258 P X SVY Starstruck 409B

### LOT 76C 3 SEXED EMBRYOS

EMBRYO LOT X TR MR DIABLO 2742Z ET

#### TR MR DIABLO 2742Z ET

CML Diablo 2X X HF Mustang Sally 904 PLD





# BECK'S THROTTLE 201K SEMEN

Beck's Throttle 201K The gap between excelling as a breeding bull and thriving as a show ring contender seems to be getting more and more difficult to bridge. Beck's Throttle 201K proved this Fall that while difficult, the two are not mutually exclusive if you've got the smoke. Throttle got to live the life of your every day herd bull out in the pastures of Manitoba for two years, including breeding 60 cows in the Spring of 2024. Andre was born with that 'how hard can it be' gene and decided to get Throttle into his show clothes in the Fall of 2024. He may have been called crazy a few times, but it turned out to be a great decision. Throttle was crowned Supreme Champion Bull at AgEx, Champion Charolais Bull at Agribition, and a coveted Top 10 spot in the CN Supreme. Progeny have sorted themselves to the top of the white pen, showcased in the Stepler Farms Bull and Female Sale on February 12.

- |                         |                         |
|-------------------------|-------------------------|
| <b>LOT 77A</b> 5 Straws | <b>LOT 77F</b> 5 Straws |
| <b>LOT 77B</b> 5 Straws | <b>LOT 77G</b> 5 Straws |
| <b>LOT 77C</b> 5 Straws | <b>LOT 77H</b> 5 Straws |
| <b>LOT 77D</b> 5 Straws | <b>LOT 77I</b> 5 Straws |
| <b>LOT 77E</b> 5 Straws | <b>LOT 77J</b> 5 Straws |

# FF LOT 77A-J SEMEN

MC840773 BECK 201K JAN 8 2022  
**DC/KCM MARKSMAN E1145 PET**  
 LT Ledger 0332 P X MS Trademark S6112

**BECK'S JEZZY 55F**  
 Sparrows Braxton 519C X Beck's Jezzy 70C  
 EPD BW 1.7 WW 66 YW 135 MILK 28

STEPLER CHAROLALIS





# CCC WC **RESOURCE** 417 P SEMEN

Proven sire of sought after genetics. Sire of Redemption and Uncharted along with a slew of productive daughters that generate.

Stored at ALTA GENETICS

**LOT 78A** 5 Straws

**LOT 78B** 5 Straws

**LOT 78C** 5 Straws

**LOT 78D** 5 Straws

**LOT 78E** 5 Straws

**LOT 78F** 5 Straws

**LOT 78G** 5 Straws

**LOT 78H** 5 Straws

**LOT 78I** 5 Straws

**LOT 78J** 5 Straws



## **LOT 78A-J** SEMEN

MC764999 FEB 17 2014

**LT RUSHMORE 8060 PLD**

LT Rio Bravo 3181 P X LT Brenda's Ease 3055PLD

**WC CCC BLUE GIRL 1528 P**

LT Blue Value 7903 ET X CCC Bad Girlfriend U146 P ET

EPD BW -1.4 WW 68 YW 109 MILK 35

WRIGHT CHAROLALIS





1 Heifer Calf is a Bold Move daughter



**WCR** **BOLD MOVE** 168 P SEMEN

**EXCEEDING EXPECTATIONS**

Bold Move is adding length, framed and overall scope and scale, his calves have awesome hair and an added high quality look. All this from a calving ease AI sire with an exceptional EPD profile and high end marketability in the resulting offspring. You want to add value to your heifers you are selling in the fall, use Bold Move.

As an added bonus the Supreme Champion female of all breeds at Farmfair International 2024 had a super high quality Bold Move heifer calf at her side as well as the Grand Champion female at Brandon Ag-Ex for Longview Cattle Company had a beautiful Bold Move heifer calf at her side proving Bold Move is getting it done.

**LOT 79A** 5 Sexed Female Straws

**LOT 79B** 5 Sexed Female Straws

**LOT 79C** 5 Sexed Female Straws

Stored at **BOW VALLEY GENETICS**

**FF**  
**LOT 79A-C**  
**SEMEN**

MC862686 DANG 168J FEB 3 2021

**WC PLATINUM 8558 P**

WC Benelli 2134 P ET X WC Maid 5651 P ET

**WCR MS REMIX 9250 P**

WCR Remix 606 ETP X WCR Ms Prime Cut 640 P

EPD BW -4.8 WW 82 YW 139 MILK 21

**PRAIRIE COVE CAROLAIS**





# PCC **BOURBON** 118J SEMEN

## High Quality Females

Berkly Ann has proven to be a genetic masterpiece with PCC Bourbon 118J being one of her high quality accomplishments.

Bourbon is proving himself to also be a great breeding tool siring some of the most exciting and high selling Charolais females of the year in 2024. Leadoff bred female in the Stepler Farms sale for \$40,000.00 being a PCC Bourbon 118J daughter

**LOT 80A** 5 Sexed Female Straws

**LOT 80B** 5 Sexed Female Straws

**LOT 80C** 5 Sexed Female Straws

Stored at **BOW VALLEY GENETICS**

1 \$40,000 High Selling Daughter, Stepler DM Miss 129L

# **FF** LOT 80A-C SEMEN

MC812577 PCC 118J JAN 12 2021

**CCC WC REDEMPTION 7143 PLD ET**

CCC WC Resource 417 P X WC Rolls Royce 3177 P ET

**BRCHE BERKLY ANN 8507 PLD ET**

M&M Outsider 4003 PLD X TR Ms Berkly 4711B ET

EPD BW -1.2 WW 61 YW 101 MILK 22

**PRAIRIE COVE CHAROLAIS**





**WCR BACKWATER JACK 060 P SEMEN**

National Champion Bull in 2021 OKC as a calf, as well as member of the Champion Pen of 3

Great outcross option for quality cattle, heifer safe calving ease

Stored at ALTA GENETICS

- |                |          |                |          |
|----------------|----------|----------------|----------|
| <b>LOT 81A</b> | 5 Straws | <b>LOT 81F</b> | 5 Straws |
| <b>LOT 81B</b> | 5 Straws | <b>LOT 81G</b> | 5 Straws |
| <b>LOT 81C</b> | 5 Straws | <b>LOT 81H</b> | 5 Straws |
| <b>LOT 81D</b> | 5 Straws | <b>LOT 81I</b> | 5 Straws |
| <b>LOT 81E</b> | 5 Straws | <b>LOT 81J</b> | 5 Straws |

**FF**  
**LOT 81A-J**  
**SEMEN**

MC832913 APR 4 2020

**PVF RIDGE 7142**

SCC O'raille 181C PLD X PVF Chisum 1340

**BRCHE TR DORY 6501**

M&M Outsider 4003 PLD X TR Ms Katie 4724B ET

EPD BW -0.4 WW 64 YW 112 MILK 32

WRIGHT CHAROLAIS





*KW*

# WC UNCHARTED

7328 P SEMEN

Uncharted, highest selling bull in WC History at \$157,500 for 1/2 Interest, also the heaviest weaning weight bull in WC history at 1015 lbs, sires incredible performance and power but being backed by the great WC Brenda 4035, his daughters are incredible

Stored at ALTA GENETICS

**LOT 82A** 5 Straws

**LOT 82B** 5 Straws

**LOT 82C** 5 Straws

**LOT 82D** 5 Straws

**LOT 82E** 5 Straws

**LOT 82F** 5 Straws

**LOT 82G** 5 Straws

**LOT 82H** 5 Straws

**LOT 82I** 5 Straws

**LOT 82J** 5 Straws



## LOT 82A-J

SEMEN

MC782739 FEB 15 2017

**CCC WC RESOURCE 417 P**

LT Rushmore 8060 PLD X WC CCC Blue Girl 1528 P

**WC BRENDA 4035 P**

WC Capital Gain 2220 P ET X WC Brenda 2005 P

EPD BW 1.3 WW 92 YW 149 MILK 27

WRIGHT CHAROLAIS





W-C





**FROM THE WHO'S WHO OF  
SEEDSTOCK PRODUCERS..**

The select Hereford offering is always an attention seeker in Freeze annually. The bulls incorporated have the tools and credentials we are looking for in purebred seedstock. Current yet proven in their lines, we've closely manicured over these lots to make sure your breeding plans to your top cow or embryo transfer can be decided here. Embryos from up and comers and proven matrons as well, Freeze '25 has all you need.

# INTRODUCING THE HEREFORD DIVISION





# HL **STIMULUS**

**2108 ET SEMEN**

One of the most exciting bulls to surface in the last couple years. Stimulus is Homozygous polled, dark red, fully pigmented, and short marked. He has had a very successful fall siring the 2 highest selling heifer calves at the MHA Good as Gold sale, and siring the top selling heifer calf at the Hoffman Ranch Fall Female sale, along with many other high sellers. Just recently he sired the Grand Champion female at the Kansas City Royal and a Division Champion at the OKC Cattlemen's Congress.

Stored at **ALTA GENETICS**

- 1 Daughter RCC 2108 Just The Thing 8M
- 2 Daughter, 2024 Grand Champion Female

- LOT 83A** 5 Straws
- LOT 83B** 5 Straws
- LOT 83C** 5 Straws
- LOT 83D** 5 Straws
- LOT 83E** 5 Straws

# **LOT 83A-E**

**SEMEN**

C03101881 2108 MAR 5 2021  
**NJW 79Z Z311 ENDURE 173D ET**  
 KCF Bennett Encore Z311 ET X BW 91H 100W Rita 79Z ET  
**H JSS KELLY 6719 ET**  
 H/TSR/CHEZ/Full Throttle ET X CRR 552 Kelly 849 ET  
 EPD BW 3.3 WW 57.1 YW 97.2 MILK 24.5

**HARRISON LIVESTOCK**





# CHURCHILL SMOKEY

3128LE<sup>T</sup> SEMEN

Churchill Smokey is a standout curve-bender, offering an impressive combination of calving ease, growth, fertility, and udder quality, along with top-of-the-breed carcass traits and reduced mature cow weight – a bull capable of enhancing the profitability of any herd. He is long bodied, with a thick build, abundant pigment, dark color, and ideal disposition. His \$125,000 dam is one of the most dominant cows in the Hereford breed. First calves born are coming easy, pigmented and vigorous!

Canadian Semen Rights owned by Medonte Highlands Polled Herefords and Glenlees Farm.  
Stored at ALTA GENETICS

- 1 Full Sister Churchill Lady 3121L ET
- 2 Dam BR Validated B413 6035 7098
- 3 Sire RST Final Print 0016

**LOT 84A** 5 Straws

**LOT 84B** 5 Straws

**LOT 84C** 5 Straws

**LOT 84D** 5 Straws

**LOT 84E** 5 Straws

# LOT 84A-E SEMEN

C03112570 3128 JAN 25 2023

**RST FINAL PRINT 0016**

Boyd 31Z Blueprint 6153 X RST MS X651 Tested 8032

**BR VALIDATED B413 6035 7098**

EFBEEF BR Validated B413 X BR Bennett 4R Y428 2101 6035

EPD BW -0.5 WW 73.6 YW 110.4 MILK 39.5

MEDONTE HIGHLANDS POLLED HEREFORDS  
GLENLEES FARM





**GLENLEES AXA** **EVOLVE** ET 112J **SEMEN**

Evolve is the sire who transmits hair, ease of calving and phenotypic cattle that we all love to stare at. Multiple progeny throughout the catalogue display his breeding capabilities. Evolve is now deceased, so semen will now be rare to obtain. First daughters in production obtain beautiful immaculate udders.

Stored at **BOVIGEN**

**LOT 85A** 5 Straws

**LOT 85B** 5 Straws

**LOT 85C** 5 Straws

**LOT 85D** 5 Straws



- 1 Evolve at CWA
- 2 Daughter RVP 112J Divine Lass ET 97L
- 3 Daughter RVP 112J Lethal 42L

**LOT 85A-D**  
**SEMEN**

C03086014 AHL 112J MAR 6 2021

**NJW 79Z Z311 ENDURE 173D ET**

KCF Bennett Encore Z311 ET X BW 91H 100W Rita 79Z ET

**RVP 106A CAMEO GIRL 45C**

MHPH 521X Action 106A X PCL Queen Maker 118U 61Z

EPD BW 4.8 WW 71.7 YW 112.5 MILK 31.9

**RIVER VALLEY, GLENLEES, AXA**





# HAROLDSON'S **MEMPHIS** 4J6L SEMEN

## EASY CALVING FROM A BULL BUILT RIGHT

Promising young herd bull that has been specifically kept back here at Haroldson's. We bred quite a few of our top heifers to Memphis this past year as he has an outcross pedigree that works in our program. His soft overall look with excellent hair and presence has us excited for his upcoming calf crop. Look for Memphis to calve easy, build them right and be marketable.

Stored at **BOVIGEN**

1 Haroldson's Memphis 4J 6L

- LOT 86A** 5 Straws
- LOT 86B** 5 Straws
- LOT 86C** 5 Straws
- LOT 86D** 5 Straws
- LOT 86E** 5 Straws

# **LOT 86A-E** SEMEN

C03108540 AFSY 6L JAN 26 2023 SEMEN

**HAROLDSON'S BREAKER 84414J**  
H FHF Pilgrim 8441 ET X Blair's 15W 40C Jane 40E

**HAROLDSON'S ROBYN 24E 44H**  
Haroldson's JVJ Royal 24E X BAR-J-M Robyn 16Y

EPD BW 2.6 WW 55.1 YW 91.2 MILK 27.9

HAROLDSON POLLED HERFORDS





**NJW 11B 6589**

# AUTHORITY

**57G ET SEMEN**

Authority is the all-around sire who never misses, no matter who he is crossed with. A true breeding bull in every sense, from remarkable EPD's, sound structure, colour, pedigree, and eye appeal.

Stored at DMV



- 1 Daughter Kirby-Lonepine MV Sybil 37K
- 2 Daughter RVP 3M
- 3 Daughter RVP 6K || 2023 Genetic Designs High Seller

**LOT 87A** 5 Straws

**LOT 87B** 5 Straws

**LOT 87C** 5 Straws

**LOT 87D** 5 Straws

**LOT 87A-D**  
**SEMEN**

C03079615 11B57G FEB 7 2019

**/S MANDATE 66589 ET**

R Leader 6964 X /S Lady Domino 0158X

**NJW 79Z 10W RITA 11B**

LJR 023R Whitmore 10W X BW 91H 100W Rita 79Z ET

EPD BW 0.1 WW 75.3 YW 113.8 MILK 31.1

**RIVER VALEY POLLED HEREFORDS**





# DAYDREAM

**RVPH 160Z254G 146JET EMBRYOS**

**ONE OF THE BEST FROM RV!!**

146J has all the upside in the world when you talk about premier Hereford genetics. Her dam and notable grandam are the foundation of NJW where offspring have set records within the breed. Udder quality at its finest, a past class winner at RAWF.. 146J is poised to anchor our donor pen here at RV. Course carrying the Daydream cow family name makes a statement itself, but mated to Authority who is the stand by sire who creates the kind of cattle every desirable seedstock enthusiast wants.

Stored at **KIRKTON VET CLINIC**



- 1 Dam NJW 73S 88X Daydream 160Z
- 2 Full Sister NJW 160Z 8Y Home Maker 202C



**LOT 88**  
**EMBRYOS**

**3 EMBRYOS**

**EMBRYOS, AUTHORITY X DAYDREAM**

**NJW 11B 6589 AUTHORITY 57G ET**

/S Mandate 66589 ET X NJW 79Z 10W Rita 11B

**RVPH 160Z254G DAYDREAM 146J ET**

NJW 139C 103C Ridge 254G X NJW 73S 88X Daydream 160Z

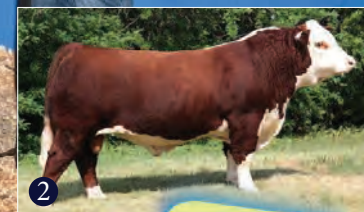
PE BW 2.0 WW 70.8 YW 107.1 MILK 38.9

**RIVER VALEY POLLED HEREFORDS**





1



2

1 Embryo Sire 89A CSC 701 Oshoto 316  
2 Embryo Sire 89B Remitall-W Haymaker ET 35H

# BLAIR-ATHOL 124E **SASSY** 145J EMBRYOS

**LOT 89A** 4 IVF EXP EMBRYOS

EMBRYO LOT X CSC 701 OSHOTO 316

**CSC 701 OSHOTO 316**

CSC 508 50B Brawn 704 X CSC 502 Lady Dew 701

**LOT 89B** 4 IVF EXP EMBRYOS

EMBRYO LOT X REMITALL-W HAYMAKER ET 35H

**REMITALL-W HAYMAKER ET 35H**

KCL WPF The Professor 7110ET X Remitall-West Belle 36B

All Stored at **BOW VALLEY GENETICS**

Oshoto is arguably the most exciting sire currently in Canada, we are beyond excited for his mating with Sassy 145J. Sassy was well liked across Canada over the past 3 years in the show ring, winning championships in 4 provinces. Her first daughter 'Saucy' was our high seller last fall for \$35,000. We think this mating is as good as we can put together.

World Champion Haymaker is producing top end Bulls and Females worldwide and after Anita's trip to Denmark, she insisted we flush Sassy to him. These two should compliment each other well. Sassy's refined look and elegance combined with the power of Haymaker could hit a homerun!

Owned with Anita Doktor



**LOT 89A-B**  
EMBRYOS

C03086887 DVL 145J APR 1 2021

**MCCOY 53A PATENT 124E**

Mccoy 70Y Skyfall 53A X Mccoy 719T Susie ET 417B

**BLAIR-ATHOL 53 CC 95Y**

Blair-Athol Classic 53U X Blair-Athol 89S Kayla 114U

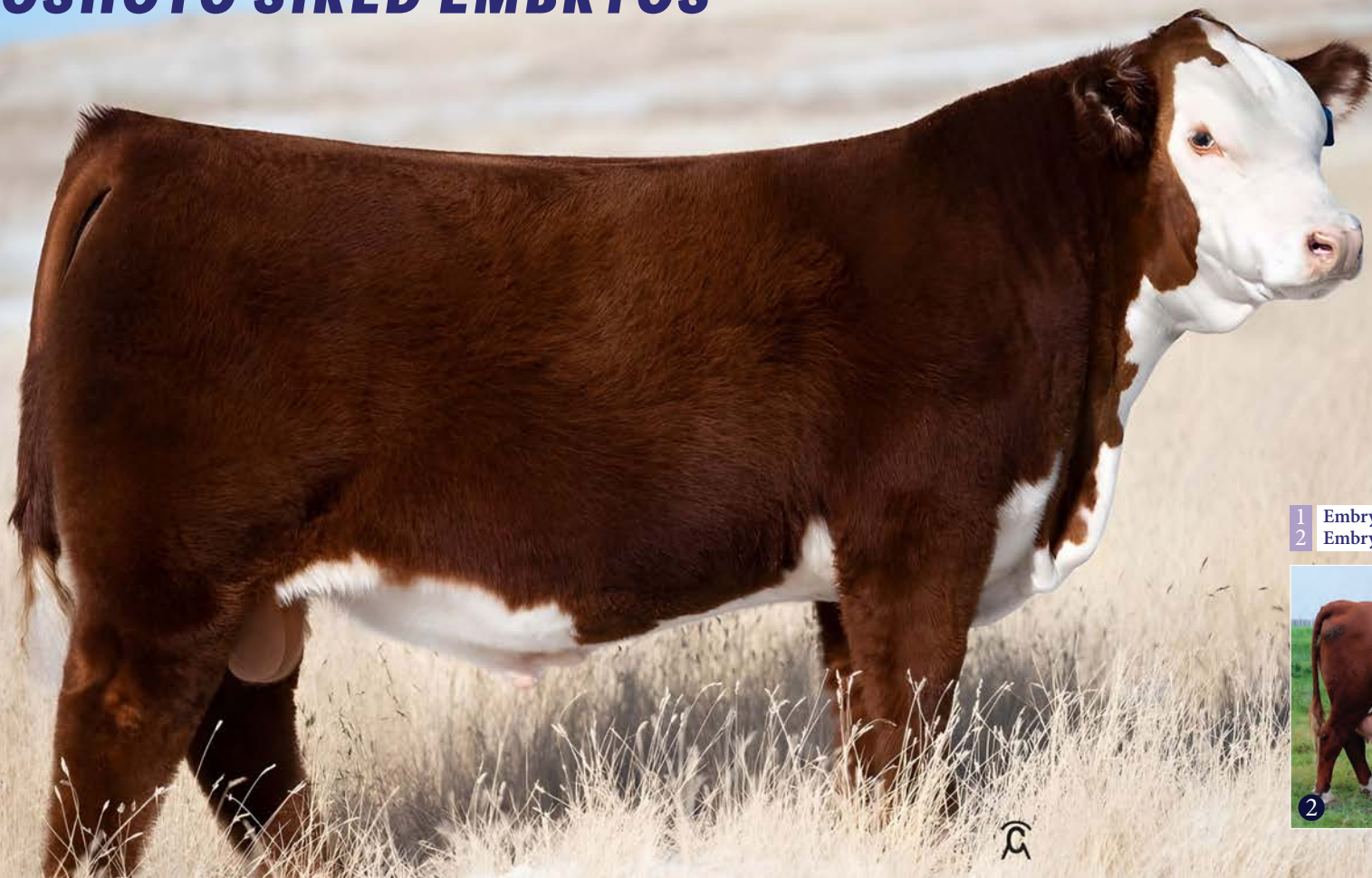
EPD BW 8.5 WW 65.3 YW 107.5 MILK 29.5

BLAIR-ATHOL AND ANITA DOKTOR



# OSHOTO SIRED EMBRYOS

1



1 Embryo Sire 89A CSC 701 Oshoto 316  
2 Embryo Dam Haroldson's Mira T100 18F



## HFL **MIRA** T100 18F EMBRYOS

Haroldson's Mira T100 18F is a Tahoe daughter out of Mira 32B. A 3/4 sister to the great United bull, mother of one of our herdsire bulls Roselawn Pioneer 28J. She has also been tested for all known defects and came back 100% clean on everything. We flushed her for the first time this year to CSC 701 Oshoto 316 and got 31 Grade "A" embryos. Here's an opportunity for you to get in on the first set of calves off this new and exciting bull. We put 20 embryos into recipis and are excited to see the calves coming early spring.

**Guaranteed one pregnancy when placed by a certified technician.**

Stored at EMBRYO GENETICS LTD

3 EMBRYOS

EMBRYOS, OSHOTO X MIRA T100 18F

**CSC 701 OSHOTO 316**

CSC 508 50B Brawn 704 X CSC 502 Lady Dew 701

**HAROLDSON'S MIRA T100 18F**

SHF Tahoe R117 T100 X Haroldson's WLC Mira ET 52B

PE BW 3.1 WW 58.3 YW 101.2 MILK 33.4

**LOT 90**  
EMBRYOS

ROSELAWN POLLED HEREFORDS





W-C



**SEMEN**  
**NJW 79Z 199B** **COWBOSS** **113H ET**

**AN ABUNDANCE OF THAT HERDBULL PRESENCE...**  
Cowboss has really developed into a true herdbull here at RV, with great figures and presence. We have big plans for Cowboss, as he is this year's cover page boy. Backed by a superior cow, get in on the ground floor of the first semen ever offered.

Stored at DMV

**GET IN ON THIS UPCOMING SENSATION**

**LOT 91A** 5 Straws

**LOT 91B** 5 Straws

**LOT 91C** 5 Straws

**LOT 91D** 5 Straws



1 MGS NJW 73S M326 Trust 100W ET  
2 Sire NJW 78P 88X Cowboss 199B ET



**LOT 91A-D**

C03085036 79Z 113H FEB 13 2020

**NJW 78P 88X COWBOSS 199B ET**

NJW 98S R117 Ribeye 88X ET X NJW BW Ladysport Dew 78P ET

**BW 91H 100W RITA 79Z ET**

NJW 73S M326 Trust 100W ET X Remitall Rita 91H

EPD BW 2.4 WW 53.8 YW 90.7 MILK 38.1

RIVER VALLEY HEREFORDS





TC



# INNISFAIL WHR X651/723 4013 ET SEMEN

## LOT 92A-D SEMEN

Now officially hard to come by, some of the most sought after females within the breed stem back to 4013. If embryo transfer or breeding your top female is on your mind, consider this proven stud.

Stored at ALTA GENETICS



1 Daughter, RVP 4013 Lily 45L

**LOT 92A** 5 Straws

**LOT 92B** 5 Straws

**LOT 92C** 5 Straws

**LOT 92D** 5 Straws

C03054441 IF 4013 SEPT 10 2014

**EFBEEF TFL U208 TESTED X651 ET**

EFBEEF Foremost U208 X EFBEEF P606 Mabel R415

**INNISFAIL P230 T723**

EF F745 Frank P230 X Innisfail 235 R501 ET

EPD BW 4.6 WW 83.3 YW 130.9 MILK 23.8

RIVER VALEY POLLED HEREFORDS





**HARVIE** **MS FIREFLY** **ET35Z EMBRYOS**

**A POWERFUL DONOR PAIRED WITH A SUPREME CHAMPION**

35Z has proven she can get the job done and has been a popular donor female the past couple of years. The ICF program have done an excellent job implementing her to the industry and this package to the supreme champion and now deceased Evolve will be a force where ever they are put in.

Stored **ON THE FARM**

1 Embryo Sire Glenlees AXA Evolve ET 112J



1

**FF**  
**LOT 93**  
**EMBRYOS**

**3 EMBRYOS**

**EMBRYOS, EVOLVE X MISS FIREFLY**

**GLENLEES AXA EVOLVE ET 112J**

NJW 79Z Z311 Endure 173D ET X RVP 106A Cameo Girl 45C

**HARVIE MS FIREFLY ET 35Z**

NJW FHF 9710 Tank 45P X harvie miss firefly 51F

**PE** BW **3.4** WW **59.7** YW **96.6** MILK **29.5**

**WADE GRAHAM**



# CONSIGNOR CONTACT INFO

## 20/20 ANGUS

Box 93 Paynton, SK S0M 2J0  
Owen Legaarden: 306-903-7070

## 66 RANCH LTD

Box 66, Duchess, AB, T0J 0Z0  
403-362-0672  
66@66ranchltd.com

## 719 CATTLE

Ben Wright  
402057 Gray Road 4 RR 1 Hanover, ON N4N 3B8  
519-374-3335  
bcwright19@hotmail.com

## ALTON CENTURY FARM

Blake, Julia, Eve, & Garrett Alton  
541 Sideroad 15N, Kincardine, ON N2Z 2X6  
519-440-6580  
baltoncenturyfarms@gmail.com

## ANDREW CATTLE CO.

Jeremy Andrew  
Box 33 RR 1, Regina, SK S4P 2Z1  
305-536-6594  
jeremy@andrewcattleco.ca

## A X A FARMS

Allan Marshall  
1467 Main Street PO Box 1101, Hampton NB E5N 8H1  
506-636-1877  
allan@axafarms.ca

## B BAR C SIMMENTALS

Brett & Chris/Shaelynn/Corbin Houchin  
Box 570, Bowden, AB T0M 0K0  
403-224-2594 || 403-877-7536  
bbarc@telusplanet.net

## BAR-E-L ANGUS

David & Lynne/Dallas/Jenna Longshore  
Box 2056, Stettler AB, T0C 2L0  
403-579-2394 || 403-740-6788  
barelangus@gmail.com

## BIG CREEK CHAROLAIS

Jeannine Doughty  
P.O. Box 523, Harrison, MO, USA 64701  
816-616-8838  
j\_doughty21@hotmail.com

## BIG HOUSE SHOW CATTLE

2056 FM 1696, Iola, TX, United States, Texas  
979-676-1450  
bradenhouse@rocketmail.com

## BLAIR-ATHOL

Duncan & Val Lees  
Box 386, Arcola, SK S0C 0G0  
306-455-2619 || 306-577-9703  
Jeff and Grace Lees  
Christin and Randy, Kylee, Jackson, Hannah and Josie  
306-577-1375  
www.blairatholfarms.com

## CASH CATTLE CO

Nolan Cash  
7317 Township Rd 105, Cypress County, AB T0K 1Z0  
403-548-9651  
cashfarms@outlook.com

## CEDARVIEW ANGUS

Bill Fulton, Tyler Fulton  
378 Concession 7 South, Pakenham, ON, K0A 2X0  
613-541-7603  
tyler\_cmc@hotmail.com

## CIRCLE CEE CHAROLAIS

Box 86, Lamont, AB, T0B 2R0  
Frank and Elly Cholak  
780-796-2108  
fcholak@telusplanet.net  
Stephen and Debbie Cholak  
780-485-7865  
sscholak@shaw.ca || dcholak@shaw.ca

## CJR CATTLE COMPANY

Clinton & Emma Ostrander  
7153 Mossie Line RR4, Alvinston ON, N0N 1A0  
519-857-2971  
cjrattle@hotmail.com

## CLARKE FAMILY FARMS

342 Chatham Street South, Blenheim, ON N0P 1A0  
Manager - Hugh Ross: 519-365-4026  
hugh.clarkeeff@gmail.com

## CSI ANGUS

Roger Reynolds  
17 Hogan Place, Emerald Park, SK, S4L 1C1  
306-536-6112  
erreynolds@accesscomm.ca

## D&N LIVESTOCK

Dave & Terri Rajotte  
Box 36, Peebles, SK S0G 3V0  
Dave: 306-736-8698  
Ben: 306-495-7727  
Carlin: 306-495-7292  
dtrajotte@sasktel.net

## DERRER CATTLE

Rod & Julie Derrer  
Jonathan and Rylee Triggs  
13913 42nd St W, Milan IL, USA, 61264  
Rod: 309-314-1492  
rjderrer@aol.com

## DOUBLE BAR D

The Dimler Family  
Box 580, Grenfell, SK S0G 2B0  
Ken Dimler: 306-697-7204  
Logan Dimler: 306-451-7229  
kenshau@yourlink.ca

## DOUBLE KL

Ken and Kathy Piller  
Hayden and Anna Piller  
Box 370, Neudorf SK, S0A 2T0  
306-730-8488  
valleyfeeders@sasktel.net

## DUDGEON CATTLE CO

Brian & Kim/Grace/Owen/Sadie Dudgeon  
1128 Bruce Road 40 RR 2, Dobbinton ON, N0H 1L0  
519-270-2500 || 519-353-4014  
dudgeongroup@gmail.com

## EARLEY LIVESTOCK

Mike & Kade Earley  
2211 Napperon Drive, Kerrwood, ON N0M 2B0  
Kade: 519-709-7839  
Mike: 519-661-8713  
kade.earley@gmail.com

## ELK RIDGE FARMS

Wade Bartkiw  
Box 57, Rosssburn, MB R0J 1V0  
204-859-0279  
wade@elkridgefarms.ca

## ELLSMERE FARMS LTD

Melissa Bailey-O'Hara  
78 Rabbit Square Road RR 5, Canning NS B0P 1H0  
902-824-1979  
ml.bailey@hotmail.com  
James Ellis  
902-680-8595  
farmboyrx@hotmail.com

## ELLINGSON SIMMENTAL

Terry A Ellingson  
5065 125th Ave NE, Dahlen North Dakota, 58224  
701-741-3045  
tellings@polarcomm.com

## EVERBLACK ANGUS

Ernest & Judy Gibson, Jordan Gibson  
RR 3, Vermilion AB, T9X 1Y8  
780-853-2422 || 780-581-1159  
jordangibson@everblack.ca

## FERME GAGNON INC.

Francis Gagnon  
426 Route 315 Nord, Cheneville, QC J0V 1E0  
514-975-3722  
ferme\_gagnon\_farm@hotmail.com

## FOX HOLLOW FARMS

Don & Janet Mellott/Stephen & Michal Mellott  
P.O. Box 56, Catoosa Oklahoma, 74015  
918-409-6068  
stephen@fhcharolais.com

## GLENLEES FARMS

Box 1, Arcola, SK S0C 0G0  
Corey: 306-577-9971  
tclees@signaldirect.ca

## GRAND RIVER ANGUS

Wayne Bleyenberg  
1292 Wilson Avenue SW, Grand Rapids, MI USA 49534  
616-889-2744  
tristatecalf@comcast.net

## GRYLLS CATTLE CO

Natalie Grylls  
Box 299 Neudorf, SK S0A 2T0  
306-730-7170  
nat.grylls@gmail.com

## HAMILTON FARMS

Rob & Gail Hamilton  
274132 Rge Rd 33, Rockyview County, AB T4C 2Y2  
Rob: 403-540-3186  
Gail: 403-540-8291  
Joel: 403-808-6341  
angus@hamiltonfarms.ca

## HAROLDSONS POLLED HEREFORDS

Chad, Lenna & Kristy Wilson  
Box 372, Wawota, SK S0G 5A0  
Chad: 306-577-1256

## HARPREY FARMS

Allan & Don Hargrave  
307483 Centre Line A RR 2, Proton Station, ON N0C 1L0  
519-923-5192  
Allan Hargrave: 519-375-5541  
Don Hargrave: 519-375-1500  
Jarrett Hargrave: 519-374-5516  
harprey@gmail.com

## HARRISON LIVESTOCK

Dave Dennis  
California  
403-815-3161

## HASSON LIVESTOCK

5536 Township Rd 3, Guelph, ON N1H 6J4  
416-817-7339  
hassonlivestock@live.com

## HOLLINGER LAND & CATTLE

Chad & Breanne  
Trevor & Melody  
Box 276, Neudorf, SK S0A 2T0  
Chad: 306-331-0302  
Trevor: 306-728-8422

## JIMMY JOE HENDERSON

Box 219, Stettler, AB T0C 1L0  
403-740-9270  
jimmyjoehenderson@gmail.com

## JON ERN FARMS LT.

The Stewart Brothers  
8920 Bisnett Linem, Blenheim ON N0P 1A0  
519-365-3695  
jonern@explornet.com

## JP CATTLE CO

Box 151, McAuley, MB R0M 1H0  
Glenn: 204-851-5669  
Barry: 204-851-0342  
brookecanart@gmail.com

## KEMP BROS

Dave/Jeff Kemp  
3340 Byers Rd, Blackstock ON L0B 1B0  
905-404-6490 || 705-928-6204  
jeff.kemp@fcc-fac.ca

## LEWIS FARMS

Ken & Corrie/Kyle/Alexis Lewis  
27115A Township Road 524, Spruce Grove AB, T7X 3M9  
780-818-3829  
kyle@lewisfarms.ca || alexis.doolaage@gmail.com



## LYNDEN MANOR FARM

Glen J & Caroline Smith  
Box 191, Carlisle ON L0R 1H0  
416-526-5428  
g.smith@merit-insurance.com

## MAINSTREAM GENETICS

Box 547 Watrous, SK S0K 4T0  
Chris Schmidt: 306-946-7948  
Davis Schmidt: 306-917-7450  
chris@mainstreamgenetics.ca

## MANDAN LAKE RANCH

Wade Staigle  
3195 15 Street SW, Center, ND, USA 58530  
701-794-3351  
mandanlakeranch@westriv.com

## MCCONNELL FARMS

Brandon/Wayne McConnell  
137296 Concession 7, Owen Sound, ON N4K 5N5  
226-668-3921

## MEADOWBRIDGE

JJ & Katie Deslippe  
922580 Road 92 RR 4, St. Mary's, ON N4X 1C7  
519-275-1739  
meadowbridge14@gmail.com

## MEDONTE HIGHLANDS POLLED HEREFORDS

Lois & Jimmy Mcaughey  
C/O 3055 Universal Drive, Mississauga, ON L4X 2E2  
705-330-4663  
loism@rogers.com

## MILLER WILSON ANGUS

Lee & Dawn Wilson  
Box 550, Bashaw, AB T0B 0H0  
Lee: 780-608-0257  
Dawn: 780-781-9733  
dmm.mwangus@gmail.com

## MURRAY RANCHES

George and Suntana Murray  
Box 10, Tilley, AB T0J 3K0  
403-501-8889  
suntana@gwmurrayranches.com

## NORTH HURON

Ray & Evelene Weber  
42292 Howick Turnberry Rd, Wingham, ON N0G 2W0  
519-291-8272  
r.e.weber@wightman.ca

## PARKVIEW FARMS

The Schmidt Family  
RR 1 Falun AB T0C 1H0  
Mike 780-387-6355  
Tyler 780-312-9177  
pvf.parkviewfarms@gmail.com

## PEAK DOT RANCHES

The Moneo Family  
Box 105, Wood Mountain, SK S0H 4L0  
Carson: 306-266-4414  
Clay: 306-266-4411  
peakdot@gmail.com

## PRAIRIE COVE CHAROLAIS

Tim & Wanda Bullick  
Tyler & Justine Bullick, Indy and Scarlet  
Box 672, Bashaw AB T0B 0H0  
Cell: 403-501-0660  
tyler.bullick2014@gmail.com

## PREMIER LIVESTOCK

Peter Frijters  
5164 Line 58 RR 2, Milverton, ON N0K 1M0  
519-276-9314  
pfrijters@crinet.com

## R PLUS SIMMENTALS

Marlin & Lucille Leblanc  
Box 1476 Estevan, SK S4A 2L7  
306-421-2470  
marlinleblanc@sasktel.net

## RAIL LINE FARMS

Paul & Brad MacIntyre  
221 Bruce County Rd 1 RR 5, Lucknow, ON N0G 2H0  
Paul: 519-357-0884  
Brad: 519-357-5469

## RIVER VALLEY POLLED HEREFORDS

Elwyn, Donald & Pauline Embury  
240 Embury Rd RR 1, Newburgh, ON K0K 2S0  
Cattle Office: 613-378-2701  
rivervalleyherefords@kos.net

## ROCKY MEADOW RANCH

Box 57, Welwyn SK S0A 4L0  
306-435-7702  
nikolos\_g@hotmail.com

## ROSELAWN POLLED HEREFORDS

Wallace & Jackie Mitchell  
Box 782 Killarney MB R0K 1G0  
204-534-8204  
Brady Mitchell  
306-840-7660  
jmitchell@goinet.ca

## SHAUN STADNYK

Box 358 Bruno SK S0K 0S0  
306-221-6166  
sstadnykfarms@hotmail.com

## SKEANS CATTLE CO

David & Larry Skeans  
1138 CR 162 Gainesville TX USA 76240  
940-736-7500  
david.g.skeans@gmail.com

## STEPPLER CHAROLAIS

Andre & Katie Steppler  
Box 248 Miami MB R0G 1H0  
204-750-1951  
steppleran@hotmail.com

## STRONGBOW

Devon & Heather/Griffin Bertholet  
Box 232 Hartney MB R0M 0X0  
204-747-4237  
strongbowfarms@gmail.com

## U2 QUALITY SEEDSTOCK

Cole Unger  
Box 275, Coaldale, AB T1M 1M3  
587-370-3700  
cunger93@gmail.com

## WADE GRAHAM

31099 Centre Road RR 5 Parkhill ON N0N 2K0  
519-868-2087  
wadesg535@gmail.com

## WALKER FARMS

Box 144 Miniota MB R0M 1M0

## WEPPLER CATTLE CO.

Braeden Weppler  
116930 Grey Road 3 Desboro ON N0H 1K0  
519-375-2625  
braedenweppler@gmail.com

## WILBAR CATTLE CO.

Bryan & Tracey Willms  
Box 176 Dundurn SK S0K 1K0  
306-492-2161  
wilbarcattle@gmail.com

## WRIGHT CHAROLAIS

Chris Peuster  
42922 Old Highway 10 Missouri USA 64085

## YOUNGDALE ANGUS

Barry & Marj Young  
Box 28, Carievale, SK S0C 0P0  
Barry: 306-482-7952  
Robb: 306-339-8330  
Damian: 306-482-8319  
barrymarjyoung@gmail.com



# TERMS & CONDITIONS

**TERMS:** The terms of the sale are cash or cheque, payable at par at sale time. The right of property shall not pass until after settlement has been made; unless previous arrangements have been made. Every animal sells to the highest bidder and in cases of disputes, the auctioneer's decision will be final. Announcements from the auction block will take precedence over the printed matter in the catalogue. Current exchange rates will be announced sale day. All monies are in Canadian funds.

**CERTIFICATE OF REGISTRATIONS:** Each purebred animal will carry papers issued by the appropriate breed association unless otherwise stated. A certificate of registry duly transferred will be furnished to the buyer for each animal after payment has been made.

**HEALTH:** All animals in the sale have met all necessary health requirements.

**PEDIGREE ESTIMATES:** Pedigree Estimates (PE) are created on the projected mating of the animal's sire and dam based on averages of the two, creating estimated values that do not hold the same accuracy of actual EPDs issued from the association and should be used as such.

**LIABILITIES:** It is understood that T Bar C Cattle Co. (2013) Ltd. is acting only as a medium between buyer and seller and is not responsible for any failure on the part of either party to live up to his obligations. Neither does T Bar C Cattle Co. (2013) Ltd. assume any financial obligations to collect or enforce collection of any monies between parties and any legal action that may in exceptional cases be taken must be between the buyer and the seller. T Bar C Cattle Co. (2013) Ltd. assumes no responsibility for any credit extended by the seller to the buyer. The buyer must look to the seller for fulfillment of all guarantees and representations made hereunder.

**DELIVERY:** We will assist in arranging transportation wherever possible. Each purchase becomes the risk of the purchaser as soon as sold.

**PHONE, MAIL, WIRE BIDS:** Bidders unable to participate in the sale may phone, wire or mail their bids and instructions to the sale manager, auctioneer or special representatives. Bids must be received in sufficient time prior to the sale.

**INSURANCE:** We strongly recommend that insurance is purchased for full value.

**ERRORS:** All announcements at sale time, written or oral, supersede any written material in the catalogue.



Return Undeliverable  
Canadian Addresses To:  
T Bar C Cattle Co. Ltd.  
Box 2330  
Warman, SK S0K 4S0

