



GRACO ANGUS RANCH

*Kent & Maureen Schmitt
Parry, SK*

306.581.6444 | GRACOANGUSRANCH@GMAIL.COM

FIRST ANNUAL ONLINE

BULL AND FEMALE SALE



Timed Auctions Made Easy

MARCH
23&24 2024

BIDDING

OPENS MARCH 23, 2024 9AM
CLOSES MARCH 24, 2024 7PM



Timed Auctions Made Easy

SALE STAFF:

Chris Poley
306-220-5006
Ben Wright
519-374-3335
Shane Michelson
403-363-9973
Levi Rimke
204-851-4515

SALE CONTACTS:

KENT SCHMIDT
306-581-6444

INSURANCE:

BONNIE THOMPSON
306-483-7311

WATCH AND BID ONLINE:

Mark Shologan
780-699-5082
DLMS Purebred Team
780-991-3025

US EXCHANGE RATE WILL BE ANNOUNCED SALE DAY

VIDEOS OF THE OFFERING AND UPDATES
WILL BE POSTED ON DLMS AND BUYAGRO

View the catalogue online
AT BUYAGRO.COM

HOW TO BID

1. Visit www.dlms.ca , scroll down sale list to find the GRACO ANGUS RANCH.

2. After you are at the FarmGate Timed auction site - farmgatetimedauctions.ca, click the LOGIN/REGISTRATION button.

First time FarmGate users:

- First time users will select the REGISTER button from this page. Fill out the registration form to signup for a free user account and it allows you to select a username and password for use on all Farm Gate Timed auctions. (please note due to some of the text notification features the FarmGate Time Auction Site requires a new account separate account from your DLMS Live sale site)

- After you create your FarmGate account you will receive a txt message with a pin code to verify your account.

- On your first log in to FarmGate Timed auctions we recommend you go to your profile and confirm your notifications are set to YES. This allows the site to send you text and/or email notifications when you are out bid and if there is activity on your favorite lots.

Returning FarmGate users:

- If you have used Farm Gate Timed auctions in the past simply enter your user name and password to continue. After you have logged in you are able to browse the timed auctions on DLMS FarmGate Timed Auctions.

3. How to Bid: Now that you are logged in and your account phone number / email is verified you are able to bid on an upcoming sale. Simply find the lot you are interested in bidding on. After you have found the lot there are 2 options for bidding on the lot.

- Place Next Bid - to place the next bid on the item, you see the amount in the first box, you simply click the "Place Bid" button and after you review the bid and agree to the terms and conditions your bid will be placed.

- Max Bid Amount - to place a max bid you put your max bid in the second box listed as "Max Bid" on the item, and then click the "Place Bid" button and after you review the bid and agree to the terms and conditions your bid will be placed as the next bid. With the Max Bid placed the computer will then keep you as the high bidder to the max amount you have placed. This can be a great feature if you are not able to give 100% attention to the sale close out and protect your interest so you do not miss out on any lots you want to purchase. The Max Bid amount is completely confidential from the seller during the sale process.

Example of How the Max Bid Works - If the lot has a \$2000 bid on it and you place a proxy bid of \$3500 into the system, the computer will bid \$2100 for you but if some one else bids \$2200, the computer will again bid for you, this time at \$2300. The system will look after your interest to a maximum of \$3500. If another bidder is on at \$3600, your proxy will no longer be effective and you will no longer have the winning bid on this lot without once again logging in and bidding again or moving your attention to a second lot of interest. Please note that in some cases a lot value can change very quickly if 2 max bids are placed on the same lot competing against each other.

4. Watch List Feature: If you have items in multiple auctions or only a few from the same auction that you want to watch with out having to scroll through the entire list you can add the lots to your watchlist. On each lot you will see the "eye" button beside the bid button, by clicking this "watch-list" Icon that item is added to your personal watchlist for easy viewing of just your favorite lots in this sale or on the entire site.

5. Sale Ending / Closeout: Most FarmGate Timed Auction sales close racehorse style with extended bidding.

What is Racehorse Style Close? Racehorse style sale close is when the entire sale stays open in extended bidding. This type of sale allows you as the bidder to change to a different lot within the same sale if the bidding has gone in to extended bidding.

How will Extended Bidding works? When we get to the close out end time the clock for close extends with any bid placed with less than 5 min on the clock. This type of extended bidding turns the end time to more of a soft time. Extended bidding allows bidders to compete in lots like a real auction and give all bidders the same time to make a decision. Always follow the clock to see how much time remains in the sale you are interested in.

6. Bidding Close & Follow-up: After the clock has gone to "ENDED" and no bidding has occurred for 5 min the computer will declare the sale finished. Following the close typically within 24 hours of the sale close the sale consignor will contact all winning bidders to arrange payment, transfer of pedigrees and delivery/Pick up of your lot. Or as the winning bidding you can contact the sale consignor / sale manager to confirm payment instructions. Please make sure that your account info is up-to-date and correct if you are the winning bidder of a lot as this is how the billing is sent to Sale manager and/or Sale consignor.

If you require assistance with using the new DLMS Farm Gate web site, if you don't understand how to create a favorites list or proxy bid, or you just plain want to bid via phone, please talk to any of the DLMS team.

MARK SHOLOGAN: 780-699-5082 DLMS TEAM: 780-991-3025

Welcome

GRACO ANGUS RANCH

OPEN HOUSE MARCH 23, 2024 11AM - 6PM

Welcome to our first annual online bull and female sale. We would like to thank all of our previous customers for your support through our past private treaty and consignment sales. We would also like to thank everyone who helped us throughout the year to make this happen. Your help, knowledge and skill are very much appreciated.

The sale will be a DLMS farm gate auction and will consist of fourteen black Angus yearling bulls and six purebred open replacement heifers. All cattle have been vaccinated with Bovi-Shield Gold FP 5 and bulls have been vaccinated for foot rot. In addition to these animals, we will also have a handmade quilted wall hanging as a donation lot with all proceeds going to the Saskatchewan Junior Angus Association.

We are very passionate about the angus breed and our program. We are always looking for new genetics to improve our herd, whether that's through artificial insemination, embryo transfer or our walking bulls. We would like to invite you to the ranch for our open house in the afternoon of March 23rd to evaluate the sale offering and visit over a hot lunch and refreshments. If you can't make it, feel free to give us a call to set up a time that works for you. We would be more than happy to visit with you and walk the pens.

Bulls can winter until May 1st free of charge. Heifers to be picked up/delivered after settlement is made. All animals become buyers responsibility after the conclusion of the sale. All bulls staying at Graco must be insured.

3/4 OF A MILE NORTH OF PARRY, SK



FROM THE DESK AT T BAR...

Welcome to the First Annual Online Bull and Female Sale hosted by Kent and Maureen Schmidt, Graco Angus Ranch, Parry, Saskatchewan on March 23 and closing on March 24, 2024.

Just outside Parry, Graco Angus Ranch runs and operates a select herd of high-quality Angus seedstock. They use A.I. and embryo transfer from the leading bulls in the beef industry – bulls with performance and predictability. As you read through their offering, you will find power bulls that are aimed at adding pounds of calf at weaning and several prospects that are suitable to use in the replacement heifer pastures. This lineup of bulls offers length of body, thick tops, plenty of hair and testicle... well worth the visit.

The select heifers offered will be a great investment... as we try to restock the North American landscape, Angus females will cost added premiums to increase herd numbers. The bonus with these young females is they carry the strongest maternal traits in their genetic makeup.

Feel free to stop in any time prior to closeout, preview the sale lineup and have a peak at the mothers or give these great folks a call to discuss which individuals will suit your breeding program.

Plan to put Graco Angus Ranch on your shopping list. Do not hesitate to give any of us at T Bar a call as we can assist you with your purchases in a professional and confidential manner.

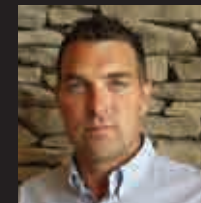
- Ben Wright



Chris Poley: 306.220.5006



Ben Wright: 519.374.3335



Shane Michelson: 403.363.9973



Levi Rimke: 204.851.4515



LOT 1 GRACO EYES ON YOU 3278

2313397 // GRA 278L // 1/1/2023

HOOVER NO DOUBT
E G EYES ONYOU
BALDRIGE ISABEL D275

S A V PEDIGREE 4834
REHORST EVENING TINGE 864F
JL EVENING TINGE 3618

MOGCK BULLSEYE
MISS BLACKCAP ELLSTON J2
HAYNES OUTRIGHT 452
BALDRIDGE ISABEL Y69
S A V PIONEER 7301
S A V BLACKCAP MAY 4136
S A V ELIMINATOR 9105
HF EVENING TINGE 57R

CE: -2 // BW: 2.5 // WW: 72 // YW: 129 // MILK: 24

BW: 81 lbs
OCT 18 WEIGHT: 904 lbs
PARENT VERIFIED

Bulls



LOT 2 GRACO QUARTERBACK 3295

2313419 // GRA 295L // 3/1/2023

S A V REGARD 4863
S A V QUARTERBACK 7933
S A V BLACKCAP MAY 3525

NORDAL 17U NET WORTH 601Z
D & K GEIS 111E
D & K MISS GEORGINA

S A V RESOURCE 1441
S A V BLACKCAP MAY 5530
S A V FINAL ANSWER 0035
S A V MAY 2397
LOCUST GROVE NET WORTH 17U
JUSTAMERE BLACKBIRD 6001
GEIS KODIAK 12'10
GEIS GEORGINA 1'11

CE: -6 // BW: 5 // WW: 74 // YW: 122 // MILK: 24

BW: 90 lbs
OCT 18 WEIGHT: 922 lbs
PARENT VERIFIED

LOT 3 **GRACO BRAVO 3314**

2313787 // GRA 314L // 20/1/2023

COLEMAN CHARLO 0256
COLEMAN BRAVO 6313
 COLEMAN DONNA 714

S A V RESOURCE 1441
HAWTHORNE EBONY
 HAWTHORNE PATRICIA

O C C PAXTON 730P
 BOHI ABIGALE 6014
 CONNEALY ONWARD
 COLEMAN DONNA 386
 RITO 707 OF IDEAL 3407 7075
 S A V BLACKCAP MAY 4136
 S A V PIONEER 7301
 CURRAGHDALE PATRICIA 27U

CE: 9 // BW: 1.2 // WW: 62 // YW: 111 // MILK: 21

BW: 80 lbs

OCT 18 WEIGHT: 816 lbs

PARENT VERIFIED



Bulls

LOT 4 **GRACO JESSE JAMES 3311**

2313786 // GRA 311L // 18/1/2023

S A V RENOVATION 6822
S A V JESSE JAMES 0968
 S A V BLACKCAP MAY 8961

CONNEALY CAPITALIST 028
BELLSTAR PRIDE 5F
 ROYAL S PRIDE 8B

S A V RENOWN 3439
 S A V MADAME PRIDE 0151
 S A V 8180 TRAVELER 004
 S A V MAY 2397
 S A V FINAL ANSWER 0035
 PRIDES PITA OF CONANGA 8821
 EXAR UPSHOT 0562B
 ROYAL PRIDE 35R

CE: 6 // BW: 2 // WW: 59 // YW: 101 // MILK: 23

BW: 82 lbs

OCT 18 WEIGHT: 794 lbs

PARENT VERIFIED





LOT 5 GRACO CUTTING EDGE 3277

2324217 // GRA 277L // 1/1/2023

S A V CUTTING EDGE 4857
HLC CUTTING EDGE 650H
HLC 1867ANNIE K 582C

MOGCK ENTICE
GRACO ALICE 147J
BELLSTAR ALICE 3D

S A V HARVESTOR 0338
S A V BLACKCAP MAY 5530
S A V ANGUS VALLEY 1867
SASKALTA ANNIE K 734T
SYDGEN ENHANCE
MOGCK ERICA 2255
PVF INSIGHT 0129
JL MS ALICE 8079

CE: -3 // BW: 3.6 // WW: 49 // YW: 96 // MILK: 24

BW: 81 lbs
OCT 18 WEIGHT: 814 lbs
PARENT VERIFIED

Bulls



LOT 6 GRACO QUARTERBACK 3285

2313406 // GRA 285L // 2/1/2023

S A V REGARD 4863
S A V QUARTERBACK 7933
S A V BLACKCAP MAY 3525

TEX PLAYBOOK 5437
BELLSTAR ICEBURG 9H
BELLSTAR ICEBURG GLBF 4E

S A V RESOURCE 1441
S A V BLACKCAP MAY 5530
S A V FINAL ANSWER 0035
S A V MAY 2397
BASIN PAYWEIGHT 1682
RITA 1C43 OF 9M26 COMPLETE
PVF INSIGHT 0129
EASTONDALE ICEBERG 30'07

CE: -2 // BW: 4.1 // WW: 77 // YW: 127 // MILK: 25

BW: 87 lbs
OCT 18 WEIGHT: 864 lbs
PARENT VERIFIED



LOT 7

GRACO JESSE JAMES 3306

2313783 // GRA 306L // 14/1/2023

S A V RENOVATION 6822	S A V RENOWN 3439
S A V JESSE JAMES 0968	S A V MADAME PRIDE 0151
S A V BLACKCAP MAY 8961	S A V 8180 TRAVELER 004
	S A V MAY 2397
S A V RAINDANCE 6848	COLEMAN CHARLO 0256
BELLSTAR ALICE 5H	S A V BLACKCAP MAY 4136
BELLSTAR ALICE 3D	PVF INSIGHT 0129
	JL MS ALICE 8079

CE: 7 // BW: 1.5 // WW: 65 // YW: 112 // MILK: 24

BW: 77 lbs

OCT 18 WEIGHT: 814 lbs

PARENT VERIFIED



Bulls



LOT 8

GRACO AMERICA 3300

2313427 // GRA 300L // 5/1/2023

S A V PRESIDENT 6847	COLEMAN CHARLO 0256
S A V AMERICA 8018	S A V BLACKCAP MAY 4136
S A V MADAME PRIDE 0075	S A F 598 BANDO 5175
	S A V MADAME PRIDE 8264
PVF INSIGHT 0129	S A V BRILLIANCE 8077
BELLSTAR ALICE 3D	PVF MISSIE 790
JL MS ALICE 8079	S A V FOUR SEASONS 5231
	HOWE MS ALICE 155N

CE: -4 // BW: 5.4 // WW: 70 // YW: 121 // MILK: 19

BW: 96 lbs

OCT 18 WEIGHT: 810 lbs

PARENT VERIFIED





LOT 9 GRACO QUARTERBACK 3303

2313431 // GRA 303L // 9/1/2023

S A V REGARD 4863
S A V QUARTERBACK 7933
S A V BLACKCAP MAY 3525

MOHNEN SOUTH DAKOTA 402
BELLSTAR ALICE 7F
JL MS ALICE 8079

S A V RESOURCE 1441
S A V BLACKCAP MAY 5530
S A V FINAL ANSWER 0035
S A V MAY 2397
MOHNEN DENSITY 730
MOHNEN JILT 539
S A V FOUR SEASONS 5231
HOWE MS ALICE 155N

CE: -4 // BW: 4.9 // WW: 77 // YW: 128 // MILK: 22

BW: 92 lbs
OCT 18 WEIGHT: 932 lbs
PARENT VERIFIED

Bulls



LOT 10 GRACO CUTTING EDGE 3291

2324258 // GRA 291L // 3/1/2023

S A V CUTTING EDGE 4857
HLC CUTTING EDGE 650H
HLC 1867ANNIE K 582C

S A V RESOURCE 1441
GRACO PRIDE 148J
GRACO PRIDE 35F

S A V HARVESTOR 0338
S A V BLACKCAP MAY 5530
S A V ANGUS VALLEY 1867
SASKALTA ANNIE K 734T
RITO 707 OF IDEAL 3407 7075
S A V BLACKCAP MAY 4136
GRACO HARVESTER 7D
CLOVER LANE AMY

CE: -4 // BW: 2.8 // WW: 61 // YW: 110 // MILK: 25

BW: 79 lbs
OCT 18 WEIGHT: 656 lbs
PARENT VERIFIED



LOT 11

GRACO CUTTING EDGE 3290

2324257 // GRA 290L // 3/1/2023

S A V CUTTING EDGE 4857
HLC CUTTING EDGE 650H
HLC 1867ANNIE K 582C

NORDAL ATLAS 78E
GRACO ARK PRIDE 187J
D & K THELMA 401F

S A V HARVESTOR 0338
S A V BLACKCAP MAY 5530
S A V ANGUS VALLEY 1867
SASKALTA ANNIE K 734T
KROUPALS B&B ATLAS 4061
NORDAL 78N BARD ROSE 78T
D & K POWERHOUSE 61D
D & K MISS DIAMOND 401D

CE: -11 // BW: 5.8 // WW: 63 // YW: 112 // MILK: 26

BW: 85 lbs

OCT 18 WEIGHT: 736 lbs

PARENT VERIFIED



Bulls



LOT 12

GRACO AMERICAN MADE 3337

2314063 // GRA 337L // 11/2/2023

S A V AMERICA 8018
S A V AMERICAN MADE 0079
S A V EMBLYNETTE 3293

S A V SENSATION 5615
REHORST EVENING TINGE 818F
JL EVENING TINGE 2280

S A V PRESIDENT 6847
S A V MADAME PRIDE 0075
S A V 004 DENSITY 4336
S A V EMBLYNETTE 7411
S A V REGISTRY 2831
S A V BLACKCAP MAY 4136
S A V ELIMINATOR 9105
HF EVENING TINGE 57R

CE: -8 // BW: 5.7 // WW: 64 // YW: 108 // MILK: 22

BW: 99 lbs

OCT 18 WEIGHT: 780 lbs

PARENT VERIFIED





LOT 13 GRACO SUMMIT 3335

2352241 // GRA 335L // 10/2/2023

HLC SUMMIT 743D

HLC SUMMIT670H

HLC CHARISE 105E

EXAR BLUE CHIP 1877B

SUNSET MADAME PRIDE 25F

SUNSET MADAME PRIDE 5B

SANKEYS JUSTIFIED 101

DOUBLE D MISS MARION 20R

GCC BUSINESS ELITE

JL CHARISE 3159

DAMERON FIRST CLASS

GREENS PRINCESS 1012

DAJS SHOCKWAVE 612

S A V MADAME PRIDE 8556

CE: 0.0 // BW: 3.4 // WW: 56 // YW: 92 // MILK: 19

BW: 67 lbs

OCT 18 WEIGHT: 708 lbs

PARENT VERIFIED

HeiferBulls



LOT 14 GRACO WOODEN 3324

2313795 // GRA 324L // 30/1/2023

EXAR FUNDAMENTAL 9186B

EXAR WOODEN 1608B

EXAR RITA 7821

JUSTAMERE 148A OVERDRIVE 504F

JUSTAMERE 504F LADY 418J

JUSTAMERE 219Y LADY 655B

DEER VALLEY GROWTH FUND

EXAR ROYAL LASS 4639

EXAR STUD 4658B

EXAR RITA 4781

FREYS OPPORTUNITY 148A

EXAR MISS BARBARA 1075

JUSTAMERE 499U BELLARIO 219Y

JUSTAMERE 158R FAME 403X

CE: 8 // BW: 1.3 // WW: 61 // YW: 108 // MILK: 25

BW: 66 lbs

OCT 18 WEIGHT: 674 lbs

PARENT VERIFIED



LOT 15

GRACO BLACKLASS 3289

2313411 // GRA 289L // 3/1/2023

BASIN PAYWEIGHT 1682
DEER VALLEY GROWTH FUND
DEER VALLEY RITA 36113

S A V PIEDMONT 0882 DMF
GRACO CINDERELLA 9C
CLOVER LANE AMY

BASIN PAYWEIGHT 006S
21AR O LASS 7017
PLATTEMERE WEIGH UP K360
DEER VALLEY RITA 9457
S A V PIONEER 7301
S A V ERICA 0806
JUST ENUFF NEW EDITION EDGAR
CLOVER LANE SPARKLER

CE: 4 // BW: 2.7 // WW: 71 // YW: 133 // MILK: 31

BW: 83 lbs

OCT 18 WEIGHT: 704 lbs

PARENT VERIFIED



Heifers



LOT 16

GRACO ARK PRIDE 3322

2313793 // GRA 322L // 29/1/2023

S A V RAINFALL 6846
S A V BLOODLINE 9578
S A V EMBLYNETTE 2369

D & K POWERHOUSE 61D
D & K THELMA 401F
D & K MISS DIAMOND 401D

COLEMAN CHARLO 0256
S A V BLACKCAP MAY 4136
S A V 707 RITO 9969
S A V EMBLYNETTE 7566
S A V RADIANCE 0801
D & K MISS ANNETTE
BLAIR'S CREED 408A
MISS D & K DAWN 401Y

CE: -3.5 // BW: 4.5 // WW: 64 // YW: 116 // MILK: 22

BW: 74 lbs

OCT 18 WEIGHT: 632 lbs

PARENT VERIFIED





LOT 17 GRACO LENA 3283

2313402 // GRA 283L // 2/1/2023

S A V REGARD 4863
S A V QUARTERBACK 7933
S A V BLACKCAP MAY 3525

NORDAL 17U NET WORTH 601Z
D & K LENA 21E
D & K MISS JILL 21U

S A V RESOURCE 1441
S A V BLACKCAP MAY 5530
S A V FINAL ANSWER 0035
S A V MAY 2397
LOCUST GROVE NET WORTH 17U
JUSTAMERE BLACKBIRD 6001
RING CREEK BPC KING 25R
CEDAR RIDGE LENA 21P

CE: -6 // BW: 5.6 // WW: 75 // YW: 124 // MILK: 23

BW: 89 lbs
OCT 18 WEIGHT: 722 lbs
PARENT VERIFIED

Heifers



LOT 18 GRACO ECHO 3298

2324259 // GRA 298L // 3/1/2023

S A V CUTTING EDGE 4857
HLC CUTTING EDGE 650H
HLC 1867ANNIE K 582C

S A V RAINDANCE 6848
BELLSTAR ECHO GLBF 11J
HF ECHO 195Z

S A V HARVESTOR 0338
S A V BLACKCAP MAY 5530
S A V ANGUS VALLEY 1867
SASKALTA ANNIE K 734T
COLEMAN CHARLO 0256
S A V BLACKCAP MAY 4136
RIVERBEND POWERLINE 0050
HF ECHO 331U

CE: -5 // BW: 5.2 // WW: 59 // YW: 108 // MILK: 26

BW: 82 lbs
OCT 18 WEIGHT: 718 lbs
SIRE VERIFIED



LOT 19

GRACO BLACKBIRD 3296

2313421 // GRA 296L // 3/1/2023

S A V RAINFALL 6846	COLEMAN CHARLO 0256
S A V BLOODLINE 9578	S A V BLACKCAP MAY 4136
S A V EMBLYNETTE 2369	S A V 707 RITO 9969
	S A V EMBLYNETTE 7566
ANGUS ACRES WINSTON 249B	ANGUS ACRES WINSTON 198X
D & K MENIA 23F	ANGUS ACRES LADY ALLEGRA 58U
D & K MISS BLACKBIRD	NEW FORCE PROSPECTOR 202T
	CEDAR RIDGE BLACKBIRD 23P

CE: -2 // BW: 3.1 // WW: 52 // YW: 96 // MILK: 21

BW: 76 lbs

OCT 18 WEIGHT: 686 lbs

SIRE VERIFIED



Heifers



LOT 20

GRACO PRIDE 3301

2313429 // GRA 301L // 6/1/2023

S A V PRESIDENT 6847	COLEMAN CHARLO 0256
S A V AMERICA 8018	S A V BLACKCAP MAY 4136
S A V MADAME PRIDE 0075	S A F 598 BANDO 5175
	S A V MADAME PRIDE 8264
SOO LINE YELLOWSTONE 9286	SOO LINE YELLOWSTONE 6344
ROYAL S PRIDE 2C	SWENCO ENCHANTRESS 20N
ROYAL PRIDE 24Y	S A V NET WORTH 4200
	ROYAL PRIDE 11R

CE: 2 // BW: 2.6 // WW: 60 // YW: 103 // MILK: 18

BW: 71 lbs

OCT 18 WEIGHT: 622 lbs

PARENT VERIFIED



DONATION LOT



LOT 21

HANDMADE QUILT WALL HANGING

ALL PROCEEDS FROM THE SALE OF THIS
HANDMADE QUILT WALL HANGING
WILL GO TOWARDS THE
SASKATCHEWAN JUNIOR ANGUS ASSOCIATION

Our donation lot this year is a 44" x 44" Angus themed quilted wall hanging. My mother, Debbie Schmidt, always made me a quilt after every deployment I did during my career in the military. Now that my deployments are to the pasture or the calving barn, she has decided to make this quilted wall hanging as a donation lot for our sale.



TERMS & Conditions

TERMS:

The terms of the sale are cash or cheque, payable at par at the sale location. Unless previous arrangements are made No release of cattle will be given until satisfactory settlement has been made. Every animal sells to the highest bidder and in cases of disputes, the auctioneer's decision will be final.

Current exchange rates will be announced sale day. All monies are in Canadian funds.

BIDDING:

Each animal will sell to the highest bidder... no by-bidding will be permitted. Disputes - Bidding will be reopened between the parties involved in dispute. If no further bidding is made, the buyer will be the person from whom the auctioneer accepted the last bid. The auctioneer's decision on all disputes will be final.

ANNOUNCEMENTS:

All announcements made from the auction block will take precedence over the printed matter in the catalogue. Buyers are therefore cautioned to pay close attention to such disclosures.

BREEDER'S GUARANTEE:

Should any bull fourteen (14) months of age or over fail to prove a breeder after being used on females known to be breeders, the matter shall be reported in writing to the seller within six (6) months following the date of purchase or six (6) months after the bull has reached fourteen (14) months of age. The seller will have the right and privilege of six (6) months to prove the bull a breeder. No guarantee is given that semen collected from the bull will freeze.

EXCEPTION GUARANTEE:

In cases where the animal is subjected to any hormonal or surgical reproduction techniques after the sale, this guarantee shall be null and void.

CERTIFICATE OF REGISTRATION:

Each animal will carry papers issued by the Canadian Angus Association. A certificate of registry duly transferred will be furnished to the buyer for each animal after payment has been made.

LIABILITIES:

All persons attend the sale at their own risk. The seller, facility owner and sale manager assume no liability, legal or otherwise, for any accidents that occur. It is understood that T Bar C Cattle Co. (2013) Ltd. is acting only as a medium between buyer and seller and is not responsible for any failure on the part of either party to live up to his obligations. Neither does T Bar C Cattle Co. (2013) Ltd. assume any financial obligations to collect or enforce collection of any monies between parties and any legal action that may in exceptional cases be taken must be between the buyer and the seller. T Bar C Cattle Co. (2013) Ltd. assumes no responsibility for any credit extended by the seller to the buyer. The buyer must look to the seller for fulfillment of all guarantees and representations made hereunder.

RIGHTS AND OBLIGATIONS:

The above terms and conditions of the sale shall constitute a contract between the buyer and seller and be equally binding to both. Resale of animals following purchase in this sale shall constitute a separate transaction and the rights and obligations of the two parties connected thereto are not covered by the terms and conditions of this sale.

PHONE, MAIL, WIRE BIDS:

Bidders unable to attend the sale may phone, wire or mail their bids and instructions to the sale managers, auctioneer or special representatives.

Bids must be received in sufficient time prior to the sale.

DELIVERY:

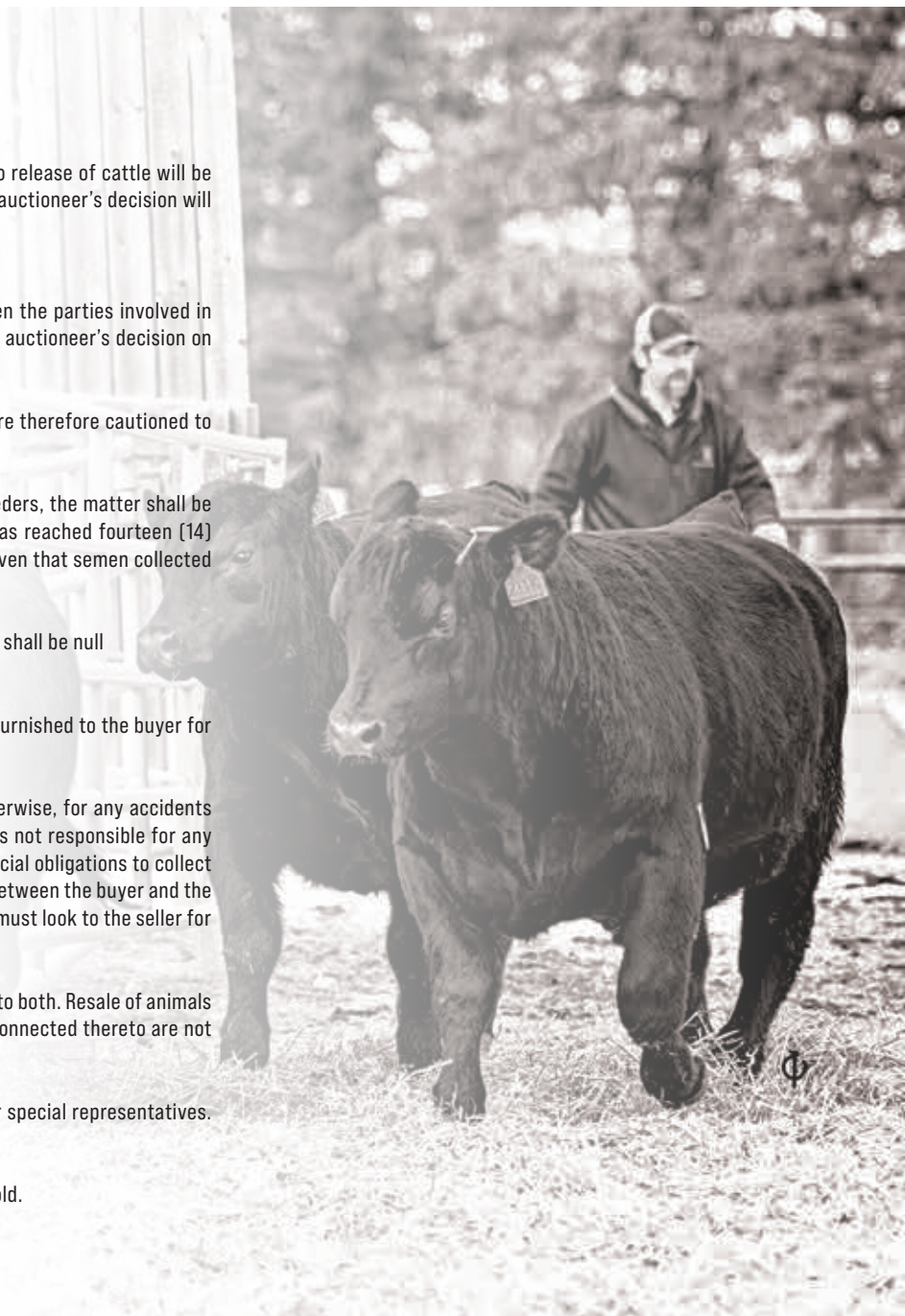
We will assist in arranging transportation wherever possible. Each animal becomes the risk of the purchaser as soon as sold.

INSURANCE:

Will be available sale day. We strongly recommend that insurance is purchased for full value.

ERRORS:

All announcements at sale time, written or oral, supersede any written material in the catalogue.



Return Undeliverable
Canadian Addresses To:

T Bar C Cattle Co. Ltd.
Box 2330
Warman, SK S0K 4S0



RETURN POSTAGE GUARANTEED
PORT DE RETOUR GARANTI

