

SECOND ANNUAL ONLINE

BULL AND FEMALE SALE

MARCH
22&23 2025



GRACO ANGUS RANCH

*Kent & Maureen Schmitt
Parry, SK*

306.581.6444 | GRACOANGUSRANCH.COM

BIDDING

OPENS MARCH 22, 2025 9AM
CLOSES MARCH 23, 2025 7PM



SALE STAFF:

Chris Poley
306-220-5006
Ben Wright
519-374-3335
Shane Michelson
403-363-9973
Levi Rimke
204-851-4515

SALE CONTACTS:

KENT SCHMIDT
306-581-6444

INSURANCE:

BONNIE THOMPSON
306-483-7311

WATCH AND BID ONLINE:

Mark Shologan
780-699-5082
DLMS Purebred Team
780-991-3025

US EXCHANGE RATE WILL BE ANNOUNCED SALE DAY

VIDEOS OF THE OFFERING AND UPDATES
WILL BE POSTED ON DLMS AND BUYAGRO

View the catalogue online
AT BUYAGRO.COM

HOW TO BID

1. Visit www.dlms.ca , scroll down sale list to find the GRACO ANGUS RANCH.

2. After you are at the FarmGate Timed auction site - farmgatetimedauctions.ca, click the LOGIN/REGISTRATION button.

First time FarmGate users:

- First time users will select the REGISTER button from this page. Fill out the registration form to sign up for a free user account and it allows you to select a username and password for use on all Farm Gate Timed auctions. (please note due to some of the text notification features the FarmGate Time Auction Site requires a new account separate account from your DLMS Live sale site)

- After you create your FarmGate account you will receive a txt message with a pin code to verify your account.

- On your first log in to FarmGate Timed auctions we recommend you go to your profile and confirm your notifications are set to YES. This allows the site to send you text and/or email notifications when you are out bid and if there is activity on your favorite lots.

Returning FarmGate users:

- If you have used Farm Gate Timed auctions in the past simply enter your user name and password to continue. After you have logged in you are able to browse the timed auctions on DLMS FarmGate Timed Auctions.

3. How to Bid: Now that you are logged in and your account phone number / email is verified you are able to bid on an upcoming sale. Simply find the lot you are interested in bidding on. After you have found the lot there are 2 options for bidding on the lot.

- Place Next Bid – to place the next bid on the item, you see the amount in the first box, you simply click the “Place Bid” button and after you review the bid and agree to the terms and conditions your bid will be placed.

- Max Bid Amount – to place a max bid you put your max bid in the second box listed as “Max Bid” on the item, and then click the “Place Bid” button and after you review the bid and agree to the terms and conditions your bid will be placed as the next bid. With the Max Bid placed the computer will then keep you as the high bidder to the max amount you have placed. This can be a great feature if you are not able to give 100% attention to the sale close out and protect your interest so you do not miss out on any lots you want to purchase. The Max Bid amount is completely confidential from the seller during the sale process.

Example of How the Max Bid Works - If the lot has a \$2000 bid on it and you place a proxy bid of \$3500 into the system, the computer will bid \$2100 for you but if some one else bids \$2200, the computer will again bid for you, this time at \$2300. The system will look after your interest to a maximum of \$3500. If another bidder is on at \$3600, your proxy will no longer be effective and you will no longer have the winning bid on this lot without once again logging in and bidding again or moving your attention to a second lot of interest. Please note that in some cases a lot value can change very quickly if 2 max bids are placed on the same lot competing against each other.

4. Watch List Feature: If you have items in multiple auctions or only a few from the same auction that you want to watch with out having to scroll through the entire list you can add the lots to your watchlist. On each lot you will see the “eye” button beside the bid button, by clicking this “watchlist” icon that item is added to your personal watchlist for easy viewing of just your favorite lots in this sale or on the entire site.

5. Sale Ending / Closeout: Most FarmGate Timed Auction sales close racehorse style with extended bidding.

What is Racehorse Style Close? Racehorse style sale close is when the entire sale stays open in extended bidding. This type of sale allows you as the bidder to change to a different lot within the same sale if the bidding has gone in to extended bidding.

How will Extended Bidding works? When we get to the close out end time the clock for close extends with any bid placed with less than 5 min on the clock. This type of extended bidding turns the end time to more of a soft time. Extended bidding allows bidders to compete in lots like a real auction and give all bidders the same time to make a decision. Always follow the clock to see how much time remains in the sale you are interested in.

6. Bidding Close & Follow-up: After the clock has gone to “ENDED” and no bidding has occurred for 5 min the computer will declare the sale finished. Following the close typically within 24 hours of the sale close the sale consignor will contact all winning bidders to arrange payment, transfer of pedigrees and delivery/Pick up of your lot. Or as the winning bidding you can contact the sale consignor / sale manager to confirm payment instructions. Please make sure that your account info is up-to-date and correct if you are the winning bidder of a lot as this is how the billing is sent to Sale manager and/or Sale consignor.

If you require assistance with using the new DLMS Farm Gate web site, if you don't understand how to create a favorites list or proxy bid, or you just plain want to bid via phone, please talk to any of the DLMS team.

MARK SHOLOGAN: 780-699-5082 DLMS TEAM: 780-991-3025

GRACO ANGUS RANCH

OPEN HOUSE MARCH 22, 2025 12PM - 5PM

Welcome to our second annual bull and female sale. We would like to thank everyone who supported our program last year whether you bid, bought, toured, texted or called. We appreciate you supporting our brand and value the relationships made. We also want to thank Kate Webb for her hard work, support and dedication she puts towards our cattle throughout the year in preparation for sale day.

We will once again be hosting a DLMS farm gate auction and on offer will be fourteen yearling bulls ranging from high performance power bulls to heifer bull options. We will also have seven top cut open purebred replacement heifers that will fit into any program. On the frozen genetic side of the sale you will see semen and embryos from industry leading genetics.

Please join us at the ranch on March, 22 from 12-5 for our open house to evaluate the sale offering and visit over a hot lunch and refreshments. If you are unable to attend please feel free call or text and set up a time to drop in and tour the pens.

Sincerely,
Kent and Maureen Schmidt

Bulls can winter until May 1st free of charge. Heifers to be picked up/delivered after settlement is made. All animals become buyers responsibility after the conclusion of the sale. All bulls staying at Graco must be insured. All semen and embryos are stored at Bovigen in Moose Jaw, Sk and will be released once settlement is made. All cattle have been vaccinated with Bovi-Shield Gold FP 5 and bulls have been vaccinated for foot rot.

FROM THE DESK AT TBAR...

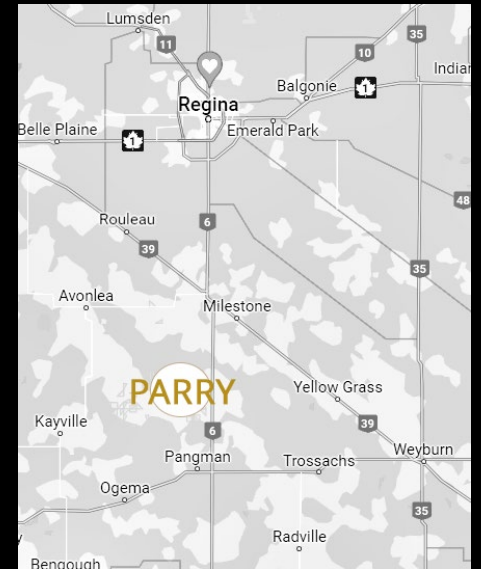
Welcome to the 2nd Annual Graco Angus Online Bull and Female Sale on March 22, with a closeout on March 23, 2025, on Farm Gate Timed Auctions. Kent and Maureen Schmidt, Parry, Saskatchewan run a small elite herd of Angus breeding stock concentrating on quality rather than quantity. The use of artificial insemination and embryo transfer has allowed them to access and produce some of the finest genetics available in the industry.

You need to stop by the ranch and see this lineup and their mothers, to truly appreciate the quality and uniformity of type. Whether you are looking for power bulls to beef up weaning weights or "a sleep at night" easy calving bull, they are here at affordable budgets. In this exciting livestock industry, it is the right time to add or replace your herd bull pen... Graco bulls can help accomplish that task.

The females are fancy in phenotype, highly maternal and will fit any pasture in the nation. Genetically powerful they are a valuable property and the embryos on offer will be a feature as they go back to the super cow "Erica 74A".

If we, at T Bar C may be of any assistance prior to or sale day, do not hesitate to call any of our team and we will be pleased to assist in a professional and confidential manner.

3/4 OF A MILE NORTH OF PARRY, SK



- Chris Poley



Chris Poley: 306.220.5006



Ben Wright: 519.374.3335



Shane Michelson: 403.363.9973



Levi Rimke: 204.851.4515



LOT 1 GRACO SCALE HOUSE 4365

2371667 // GRA 365M // 02/01/2024

MARCYS SCALE CRUSHER
S A V SCALE HOUSE 0845
S A V BLACKCAP MAY 1416

YOUNG DALE BELIEVE 46B
J P D PRIDE 20F
J P D PRIDE 19Z

SITZ UPWARD 307R
MARCYS ERICA 393
RITO 707 OF IDEAL 3407 7075
S A V BLACKCAP MAY 4136
YOUNG DALE XCALIBER 32X
YOUNG DALE GRACE 126Z
K C F BENNETT TOTAL
J P D PRIDE 46S

BW: 2.6 // CE: 1 // WW: 71 // YW: 121 // MILK: 16

BW: 84

Oct 2 weight: 888

Parent Verified

Bulls



LOT 2 GRACO SCALE HOUSE 4377

2371681 // GRA 377M // 16/01/2024

MARCYS SCALE CRUSHER
S A V SCALE HOUSE 0845
S A V BLACKCAP MAY 1416

NORDAL ATLAS 78E
GRACO EULA184J
D & K EULA 006F

SITZ UPWARD 307R
MARCYS ERICA 393
RITO 707 OF IDEAL 3407 7075
S A V BLACKCAP MAY 4136
KROUPALS B&B ATLAS 4061
NORDAL 78N BARD ROSE 78T
D & K POWERHOUSE 61D
EARLY SUNSET EULA 6D

BW: 4.7 // CE: -2 // WW: 73 // YW: 130 // MILK: 21

BW: 90

Oct 2 weight: 906

Parent Verified

LOT 3 **GRACO SCALE HOUSE 4363**

2371662 // GRA 363M // 02/01/2024

MARCYS SCALE CRUSHER
S A V SCALE HOUSE 0845
 S A V BLACKCAP MAY 1416

ANGUS ACRES WINSTON 249B
D & K MENIA 23F
 D & K MISS BLACKBIRD

SITZ UPWARD 307R
 MARCYS ERICA 393
 RITO 707 OF IDEAL 3407 7075
 S A V BLACKCAP MAY 4136
 ANGUS ACRES WINSTON 198X
 ANGUS ACRES LADY ALLEGRA 58U
 NEW FORCE PROSPECTOR 202T
 CEDAR RIDGE BLACKBIRD 23P

BW: 1.4 // CE: 4 // WW: 59 // YW: 104 // MILK: 21

BW: 74

Oct 2 weight: 934

Low birth weight

Parent Verified



Bulls

LOT 4 **GRACO QUARTERBACK 4376**

2371679 // GRA 376M // 15/01/2024

S A V REGARD 4863
S A V QUARTERBACK 7933
 S A V BLACKCAP MAY 3525

S A V RAINDANCE 6848
BELLSTAR GLBF 10J
 BARRVALLEY LADY

S A V RESOURCE 1441
 S A V BLACKCAP MAY 5530
 S A V FINAL ANSWER 0035
 S A V MAY 2397
 COLEMAN CHARLO 0256
 S A V BLACKCAP MAY 4136
 MYTTY IN FOCUS
 HAWTHORNE LADY'S RIGHT TIME 7T

BW: 5.5 // CE: -3 // WW: 83 // YW: 140 // MILK: 23

BW: 95

Oct 2 weight: 892

Parent Verified





LOT 5 GRACO BLOODLINE 4369

2371673 // GRA 369M // 06/01/2024

S A V RAINFALL 6846
S A V BLOODLINE 9578
S A V EMBLYNETTE 2369

VISION UNANIMOUS 1418
BELLSTAR BARDOLIA 5D
BARDOLIA OF PEAK DOT 519R

COLEMAN CHARLO 0256
S A V BLACKCAP MAY 4136
S A V 707 RITO 9969
S A V EMBLYNETTE 7566
VISIONTOPLINE ROYAL STOCKMAN
VISION EDELLA 665
HF POWER-UP 72N
BARDOLIA OF PEAK DOT 963H

BW: 2.4 // CE: -1 // WW: 60 // YW: 110 // MILK: 19

BW: 74

Oct 2 weight: 798

Low birth weight

Parent Verified

Bulls



LOT 6 GRACO BLOODLINE 4374

2371676 // GRA 374M // 14/01/2024

S A V RAINFALL 6846
S A V BLOODLINE 9578
S A V EMBLYNETTE 2369

S A V RESOURCE 1441
GRACO ZARA 86H
KEMP BROTHERS BROOKE 60C

COLEMAN CHARLO 0256
S A V BLACKCAP MAY 4136
S A V 707 RITO 9969
S A V EMBLYNETTE 7566
RITO 707 OF IDEAL 3407 7075
S A V BLACKCAP MAY 4136
JINDRA DOUBLE VISION
CURRAGHDALE ZARA 47Z

BW: 2.8 // CE: -2 // WW: 59 // YW: 114 // MILK: 21

BW: 84

Oct 2 weight: 752

Parent Verified

LOT 7 **GRACO ICONIC 4396**

2371716 // GRA 396M // 14/02/2024

DB ICONIC G95
GRACO ICONIC 2260
 GRACO AGNES 51H

S A V SENSATION 5615
REHORST EVENING TINGE 818F
 JL EVENING TINGE 2280

MUSGRAVE 316 STUNNER
 DB MS DISCOVERY D13
 RITO 9FB3 OF 5H11 FULLBACK
 HAWTHORNE BONNIE 7F
 S A V REGISTRY 2831 DMF
 S A V BLACKCAP MAY 4136
 S A V ELIMINATOR 9105
 HF EVENING TINGE 57R

BW: 3.2 // CE: -3 // WW: 65 // YW: 113 // MILK: 25

BW: 89

Oct 2 weight: 812

Parent Verified



Bulls

LOT 8 **GRACO ICONIC 4409**

2371737 // GRA 409M // 28/02/2024

DB ICONIC G95
GRACO ICONIC 2260
 GRACO AGNES 51H

JUSTAMERE 148A OVERDRIVE 504F
JUSTAMERE 504F LADY 418J
 JUSTAMERE 219Y LADY 655B

MUSGRAVE 316 STUNNER
 DB MS DISCOVERY D13
 RITO 9FB3 OF 5H11 FULLBACK
 HAWTHORNE BONNIE 7F
 FREYS OPPORTUNITY 148A
 EXAR MISS BARBARA 1075
 JUSTAMERE 499U BELLAGIO 219Y
 JUSTAMERE 158R FAME 403X

BW: 2.4 // CE: 3 // WW: 73 // YW: 123 // MILK: 27

BW: 78

Oct 2 weight: 808

Parent Verified





LOT 9 GRACO ICONIC 4416

2371741 // GRA 416M // 07/03/2024

DB ICONIC G95
GRACO ICONIC 2260
GRACO AGNES 51H

CONLEY SOUTH POINT 8362
HLC CSI ANNIE K 859J
PM ANNIE K 3'19

MUSGRAVE 316 STUNNER
DB MS DISCOVERY D13
RITO 9FB3 OF 5H11 FULLBACK
HAWTHORNE BONNIE 7F
STEVENS TURNING POINT
P R LADY 909 4200-587
PM EXECUTIVE DECISION 5'17
POPLAR MEADOWS ANNIE K 40'12

BW: -0.7 // CE: 11 // WW: 73 // YW: 118 // MILK: 23

BW: 66

Oct 2 weight: 742

Low birth weight

Parent Verified

Bulls



LOT 10 GRACO ROGUE 4397

371717 // GRA 397M // 17/02/2024

COLEMAN TRIUMPH 9145
HLC CSI ROGUE 57K
HLC CSI BLACKBIRD 697H

S A V RENEW 8132
GRACO PRIDE 218K
GRACO PRIDE 35F

COLEMAN BRAVO 6313
LAWSONS CHLOE C815
BROOKING FIREBRAND 6068
DMM BLACKBIRD 105A
S A V RENOWN 3439
S A V BLACKCAP MAY 4593
GRACO HARVESTER 7D
CLOVER LANE AMY

BW: 1.9 // CE: 2 // WW: 53 // YW: 92 // MILK: 22

BW: 69

Oct 2 weight: 668

Low birth weight

Moderate framed

Parent Verified

LOT 11 **GRACO ROGUE 4404**

2371731 // GRA 404M // 23/02/2024

COLEMAN TRIUMPH 9145
HLC CSI ROGUE 57K
 HLC CSI BLACKBIRD 697H

S A V RAINDANCE 6848
GRACO EBONY 220K
 HAWTHORNE EBONY

COLEMAN BRAVO 6313
 LAWSONS CHLOE C815
 BROOKING FIREBRAND 6068
 DMM BLACKBIRD 105A
 COLEMAN CHARLO 0256
 S A V BLACKCAP MAY 4136
 S A V RESOURCE 1441
 HAWTHORNE PATRICIA

BW: 1.4 // CE: 2 // WW: 55 // YW: 100 // MILK: 23

BW: 73

Oct 2 weight: 632

Low birth weight

Moderate framed

Parent Verified



Bulls

LOT 12 **GRACO ROGUE 4393**

2371709 // GRA 393M // 11/02/2024

COLEMAN TRIUMPH 9145
HLC CSI ROGUE 57K
 HLC CSI BLACKBIRD 697H

BASIN RAINMAKER 4404
GRACO ANTOINETTE 239K
 D & K STEPHANIE 66F

COLEMAN BRAVO 6313
 LAWSONS CHLOE C815
 BROOKING FIREBRAND 6068
 DMM BLACKBIRD 105A
 BASIN RAINMAKER 2704
 BASIN JOY 1036 NHF
 NORDAL 17U NET WORTH 601Z
 D & K MISS ANNETTE

BW: 1 // CE: 5 // WW: 47 // YW: 84 // MILK: 25

BW: 75

Oct 2 weight: 686

Low birth weight

Moderate framed

Parent Verified





LOT 13 GRACO ROGUE 4400

2371722 // GRA 400M // 21/02/2024

COLEMAN TRIUMPH 9145
HLC CSI ROGUE 57K
HLC CSI BLACKBIRD 697H

CHESTNUT TURNING HEADS 29
GRACO STAR 227K
HLC STAR 800H

COLEMAN BRAVO 6313
LAWSON'S CHLOE C815
BROOKING FIREBRAND 6068
DMM BLACKBIRD 105A
STEVENSON TURNING POINT
CN PF BEAUTY 750
HLC GRIT 310F
STILL MEADOWS AFA193D STAR 233

BW: 2.3 // CE: 0 // WW: 54 // YW: 94 // MILK: 23

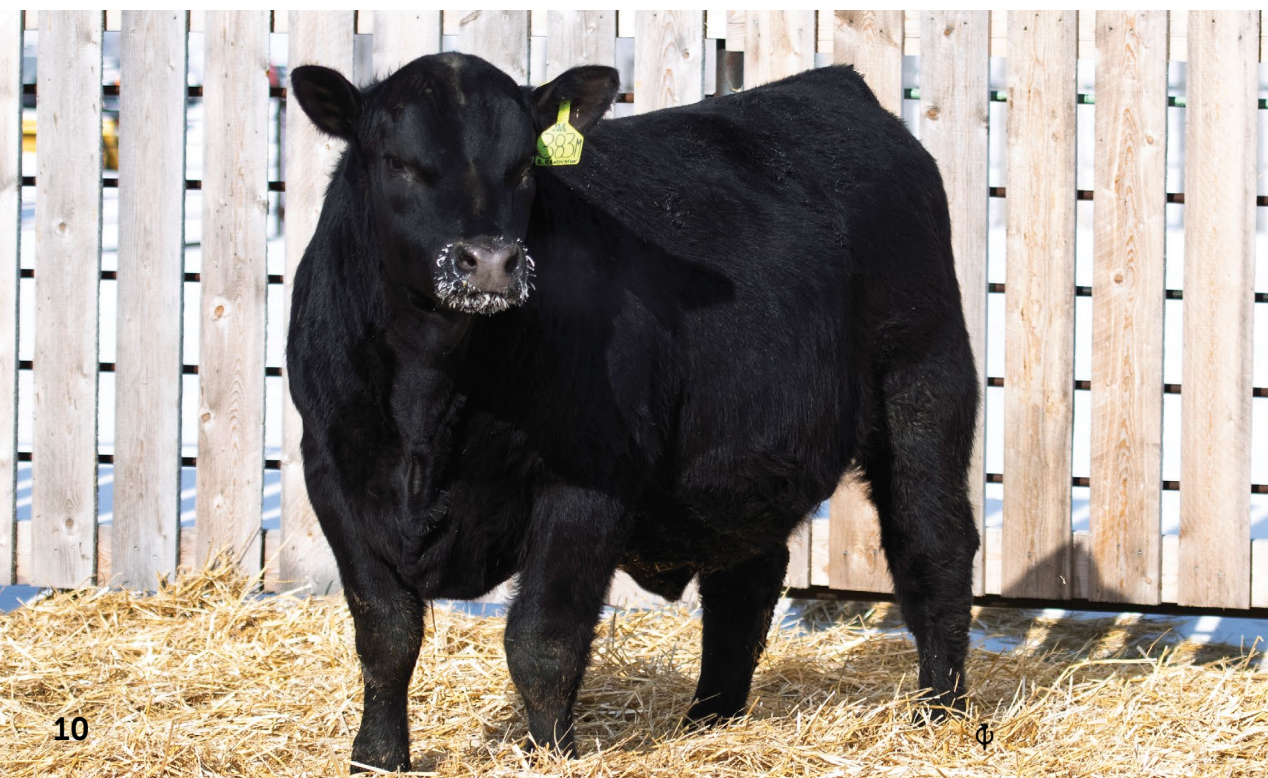
BW: 76

Oct 2 weight: 698

Moderate framed

Parent Verified

Bulls



LOT 14 GRACO RENOVATION 4383

2371694 // GRA 383M // 04/02/2024

S A V RENOVATION 6822
BROOKING RENOVATION 2014
BROOKING TIBBIE 6012

D & K CAPACITY 17C
D & K EMULOUS 12E
D & K MISS KESLEY 12Z

S A V RENOWN 3439
S A V MADAME PRIDE 0151
BROOKING BANK NOTE 4040
HF TIBBIE 121T
S A V 004 CAPACITY 5234
LEELA BARB 17T
NEW FORCE PROSPECTOR 202T
LEELA MISS EMULOUS 12T

BW: 2.5 // CE: 1 // WW: 53 // YW: 90 // MILK: 18

BW: 81

Oct 2 weight: 800

Parent Verified



LOT 15 GRACO EVENING TINGE 4375

2371678 // GRA 375M // 15/01/2024

BASIN RAINMAKER 2704
BASIN RAINMAKER 4404
BASIN JOY 1036 NHF

COLEMAN BRAVO 6313
GRACO EVENING TINGE 150J
REHORST EVENING TINGE 818F

BASIN RAINMAKER P175
BASIN ERICA 7520 BV
BASIN PAYWEIGHT 107S
BASIN JOY 566T
COLEMAN CHARLO 0256
COLEMAN DONNA 714
S A V SENSATION 5615
JL EVENING TINGE 2280

BW: 1.5 // CE: 6 // WW: 64 // YW: 113 // MILK: 29

BW: 75

Sep 24 weight: 736

Parent Verified



Heifers



LOT 16 GRACO BLACKCAP 4379

2371686 // GRA 379M // 18/01/2024

CASINO BOMBER N33
LVVF TANKER 14
LVVF LEGEND 842

WILKS REGIMENT 9035
GF BLACKCAP 110K
JL BLACKCAP 0110

KM BROKEN BOW 002
CASINO ANNIE K48
V A R LEGEND 5019
LVVF BULLSEYE 1154
WAR CAVALRY B063 Z044
VINTAGE CHLOE 6137
DEER VALLEY GROWTH FUND
JL BLACKCAP 3116

BW: 2.5 // CE: 8 // WW: 96 // YW: 171 // MILK: 28

BW: 79

Sep 24 weight: 776

Parent Verified





LOT 17 GRACO ERROLINE 4364

2371664 // GRA 364M // 02/01/2024

S A V RAINFALL 6846
S A V BLOODLINE 9578
S A V EMBLYNETTE 2369

JPD UNTOUCHABLE 1D
RIVERVIEW ERROLINE 14H
RIVERVIEW ELLIE - MAY 8B

COLEMAN CHARLO 0256
S A V BLACKCAP MAY 4136
S A V 707 RITO 9969
S A V EMBLYNETTE 7566
VISION UNANIMOUS 1418
JPD BLACKCAP 1W
S A V CAMARO 9272
RIVERVIEW ERROLINE 1T

BW: 3 // CE: -3 // WW: 68 // YW: 121 // MILK: 22

BW: 77

Sep 24 weight: 734

Parent Verified

Heifers



LOT 18 GRACO ABIGAIL 4367

2371671 // GRA 367M // 03/01/2024

BASIN PAYWEIGHT 1682
DEER VALLEY GROWTH FUND
DEER VALLEY RITA 36113

MUSGRAVE REDEMPTION
RMCC ABIGALE 126K
ROLLING MEADOWS ABIGALE 34G

BASIN PAYWEIGHT 006S
21AR O LASS 7017
PLATTEMERE WEIGH UP K360
DEER VALLEY RITA 9457
CASINO BOMBER N33
MUSGRAVE BARBARA 303-947
S A V SENSATION 5615
WHITESTONE ABIGALE 4106

BW: 3.1 // CE: 2 // WW: 84 // YW: 152 // MILK: 27

BW: 84

Sep 24 weight: 770

Parent Verified



LOT 19 GRACO EULA 4386

2371703 // GRA 386M // 07/02/2024

SITZ STELLAR 726D
S A V STERLING 1766
SA V POLLY 9744

D & K POWERHOUSE 61D
D & K EULA 006F
EARLY SUNSET EULA 6D

MOHNEN SUBSTANTIAL 272
SITZ PRIDE 200B
S A V GOVERNOR 6844
S A V POLLY 7756
S A V RADIANCE 0801
D & K MISS ANNETTE
S CHISUM 6175
EARLY SUNSET EULA 3B

BW: 2.1 // CE: 4 // WW: 69 // YW: 122 // MILK: 18

BW: 72

Sep 24 weight: 664

Parent Verified



Heifers



LOT 20 GRACO ICEBURG 4385

2371699 // GRA 385M // 07/02/2024

COLEMAN TRIUMPH 9145
HLC CSI ROGUE 57K
HLC CSI BLACKBIRD 697H

MUSGRAVE CRACKERJACK
GRACO ICEBURG 226K
BELLSTAR ICEBURG 9H

COLEMAN BRAVO 6313
LAWSON'S CHLOE C815
BROOKING FIREBRAND 6068
DMM BLACKBIRD 105A
MUSGRAVE 316 STUNNER
MUSGRAVE RITO JET A649
TEX PLAYBOOK 5437
BELLSTAR ICEBURG GLBF 4E

BW: 0.6 // CE: 6 // WW: 56 // YW: 98 // MILK: 27

BW: 69

Sep 24 weight 616

Moderate framed

Parent Verified





LOT 21 GRACO ALICE 4394

2371710 // GRA 394M // 12/02/2024

DB ICONIC G95
GRACO ICONIC 2260
GRACO AGNES 51H

MOGCK ENTICE
GRACO ALICE 147J
BELLSTAR ALICE 3D

MUSGRAVE 316 STUNNER
DB MS DISCOVERY D13
RITO 9FB3 OF 5H11 FULLBACK
HAWTHORNE BONNIE 7F
SYDGEN ENHANCE
MOGCK ERICA 2255
PVF INSIGHT 0129
JL MS ALICE 8079

BW: 1.7 // CE: 4 // WW: 67 // YW: 118 // MILK: 23

BW: 77

Sep 24 weight: 602

Parent Verified



Semen

All semen stored at Bovigen Moose Jaw, SK



LOT 22 A&B SAV RESOURCE 1441 SEMEN

R R RITO 707
RITO 707 OF IDEAL 3407 7075
IDEAL 3407 OF 1418 076

S A V 8180 TRAVELER 004
S A V BLACKCAP MAY 4136
S A V MAY 2397

RITO N BAR
ERISKAY OF ROLLIN ROCK 3
IDEAL 1418 OF 8103 4286
IDEAL 076 OF 692 8375
SITZ TRAVELER 8180
BOYD FOREVER LADY 8003
S A F 598 BANDO 5175
S A V MAY 7238

BW: 4.1 LBS // CE: 0 // WW: 69 // YW: 130 // MILK: 17

Lot 22A - 2 straws sexed female semen

Lot 22B - 3 straws conventional semen

LOT 23

SAV RAINFALL 6846 SEMEN

O C C PAXTON 730P
COLEMAN CHARLO 0256
 BOHI ABIGALE 6014

S A V 8180 TRAVELER 004
S A V BLACKCAP MAY 4136
 S A V MAY 2397 CAF

O C C FOCUS 813F
 O C C BLACKBIRD 736K
 SITZ TRAVELER 8180
 S A V ABIGALE 6062
 SITZ TRAVELER 8180
 BOYD FOREVER LADY 8003
 S A F 598 BANDO 5175
 S A V MAY 7238

BW: 0.5 LBS // CE: 7 // WW: 57 // YW: 110 // MILK: 25

Lot 23 - 5 straws conventional semen



Gemen

LOT 24

SAC CONVERSION SEMEN

BT CROSSOVER 758N
SILVEIRAS CONVERSION 8064
 EXG SARAS DREAM S609 R3

S A V 004 PREDOMINANT 4438
LAFLINS FARRAH 0250 M1F
 LAFLINS FARRAH 7215

C A FUTURE DIRECTION 5321
 BT ROYAL PRIDE 237G
 BR MIDLAND
 EXAR SARAS DREAM 9809
 S A V 8180 TRAVELER 004
 S A V EMBLYNETTE 1182
 TC GRIDIRON 258
 LAFLINS FARRAH 912

BW: 1.6 LBS // CE: 1 // WW: 40 // YW: 76 // MILK: 27

Lot 24 - 2 straws sexed female semen



Kate Roberts



Mark Sneed



LOT 25 A-C

PVF INSIGHT 0129 SEMEN

S A V BISMARCK 5682
S A V BRILLIANCE 8077
 S A V BLACKCAP MAY 5270

P V F NEW HORIZON 001
PVF MISSIE 790
 P V F MISS RAPTOR 024

G A R GRID MAKER
 S A V ABIGALE 0451
 S A V 8180 TRAVELER 004
 S A V MAY 2420
 B/R NEW DESIGN 323
 HYLINE ELLEN 410
 DAMERON P V F RAPTOR 702
 P V F MISS STOCKMAN 812

BW: 2.2 LBS // CE: 4 // WW: 60 // YW: 105 // MILK: 21

Lot 25A - 1 pack of 3 straws conventional semen

Lot 25B - 1 pack of 3 straws conventional semen

Lot 25C - 1 pack of 3 straws conventional semen

Gemen



Kato Roberts



LOT 26 A&B

ELLINGSON PROLIFIC 3044 SEMEN

ELLINGSON PROFOUND 8155
ELLINGSON PROLIFIC
 EA QUEEN 8070

ELLINGSON ROUGHRIDER 4202
EA ABIGALE 9216
 EA ABIGALE 6207

S POWERPOINT WS 5503
 EA ROSETTA 6157
 KOUPAL JUNEAU 797
 EA QUEEN 2350
 CONNEALY EARNAN 076E
 EA BLACKLASS 8914
 KOUPAL ADVANCE 28
 EA ABIGALE 4312

BW: LBS // CE: // WW: // YW: // MILK:

Lot 26A - 1 pack of 3 straws sexed female semen

Lot 26B - 1 pack of 3 straws sexed female semen

Embryos

Embryos stored at Bovigen Moose Jaw, SK



An opportunity to acquire some of the top genetics in our program. Graco Erica 3302, a direct daughter of Bar-E-L Erica 74A, has been a tour favourite with many inquiries to either purchase her outright or embryos. With our embryo inventory where it is we have decided to offer two packs of three sired by SAV Density and sexed female Ellingson Prolific.



LOT 27A

ELLINGSON PROLIFIC X GRACO ERICA 3302

3 Sexed Female IVF Embryos

ELLINGSON PROFOUND 8155	S POWERPOINT WS 5503
ELLINGSON PROLIFIC	EA ROSETTA 6157
EA QUEEN 8070	KOUPAL JUNEAU 797
	EA QUEEN 2350
S A V RENOWN 3439	RITO 707 OF IDEAL 3407 7075
GRACO ERICA 3302	S A V BLACKCAP MAY 4136
BAR-E-L ERICA 74A	BAR-E-L NATURAL LAW 52Y
	HF ERICA 339T

PE BW: 3.6 // CE: 2.5 // WW: 60 // YW: 103 // MILK: 21



LOT 27B

SAV 004 DENSITY 4336 X GRACO ERICA 3302

3 IVF Embryos

S A V 8180 TRAVELER 004	SITZ TRAVELER 8180
S A V 004 DENSITY 4336	BOYD FOREVER LADY 8003
S A V MAY 7238	LEACHMAN RIGHT TIME
	S A R PROSPECTOR MAY 9124
S A V RENOWN 3439	RITO 707 OF IDEAL 3407 7075
GRACO ERICA 3302	S A V BLACKCAP MAY 4136
BAR-E-L ERICA 74A	BAR-E-L NATURAL LAW 52Y
	HF ERICA 339T

PE BW: 3.7 // CE: -1 // WW: 77 // YW: 130 // MILK: 18

DONATION LOT



LOT 28 HANDMADE THROW QUILT

ALL PROCEEDS FROM THE SALE OF THIS
THROW QUILT
WILL BE DONATED TO
SASKATCHEWAN JUNIOR ANGUS ASSOCIATION

Our donation lot Our donation lot this year is a 72"
long x 55" wide Saskatchewan themed throw quilt made by
my mother Debbie Schmidt. Last year's donation quilt raised
\$500 for the SJAA.

Terms & Conditions

TERMS:

The terms of the sale are cash or cheque, payable at par at the sale location. Unless previous arrangements are made No release of cattle will be given until satisfactory settlement has been made. Every animal sells to the highest bidder and in cases of disputes, the auctioneer's decision will be final.

Current exchange rates will be announced sale day. All monies are in Canadian funds.

BIDDING:

Each animal will sell to the highest bidder... no by-bidding will be permitted. Disputes - Bidding will be reopened between the parties involved in dispute. If no further bidding is made, the buyer will be the person from whom the auctioneer accepted the last bid. The auctioneer's decision on all disputes will be final.

ANNOUNCEMENTS:

All announcements made from the auction block will take precedence over the printed matter in the catalogue. Buyers are therefore cautioned to pay close attention to such disclosures.

BREEDER'S GUARANTEE:

Should any bull fourteen (14) months of age or over fail to prove a breeder after being used on females known to be breeders, the matter shall be reported in writing to the seller within six (6) months following the date of purchase or six (6) months after the bull has reached fourteen (14) months of age. The seller will have the right and privilege of six (6) months to prove the bull a breeder. No guarantee is given that semen collected from the bull will freeze.

EXCEPTION GUARANTEE:

In cases where the animal is subjected to any hormonal or surgical reproduction techniques after the sale, this guarantee shall be null and void.

CERTIFICATE OF REGISTRATION:

Each animal will carry papers issued by the Canadian Angus Association. A certificate of registry duly transferred will be furnished to the buyer for each animal after payment has been made.

LIABILITIES:

All persons attend the sale at their own risk. The seller, facility owner and sale manager assume no liability, legal or otherwise, for any accidents that occur. It is understood that T Bar C Cattle Co. (2013) Ltd. is acting only as a medium between buyer and seller and is not responsible for any failure on the part of either party to live up to his obligations. Neither does T Bar C Cattle Co. (2013) Ltd. assume any financial obligations to collect or enforce collection of any monies between parties and any legal action that may in exceptional cases be taken must be between the buyer and the seller. T Bar C Cattle Co. (2013) Ltd. assumes no responsibility for any credit extended by the seller to the buyer. The buyer must look to the seller for fulfillment of all guarantees and representations made hereunder.

RIGHTS AND OBLIGATIONS:

The above terms and conditions of the sale shall constitute a contract between the buyer and seller and be equally binding to both. Resale of animals following purchase in this sale shall constitute a separate transaction and the rights and obligations of the two parties connected thereto are not covered by the terms and conditions of this sale.

PHONE, MAIL, WIRE BIDS:

Bidders unable to attend the sale may phone, wire or mail their bids and instructions to the sale managers, auctioneer or special representatives.

Bids must be received in sufficient time prior to the sale.

DELIVERY:

We will assist in arranging transportation wherever possible. Each animal becomes the risk of the purchaser as soon as sold.

INSURANCE:

Will be available sale day. We strongly recommend that insurance is purchased for full value.

ERRORS:

All announcements at sale time, written or oral, supersede any written material in the catalogue.



Return Undeliverable
Canadian Addresses To:

T Bar C Cattle Co. Ltd.
Box 2330
Warman, SK S0K 4S0



RETURN POSTAGE GUARANTEED
PORT DE RETOUR GARANTI

