

# LEADING EDGE

**SPECKLE PARK**

BULL & FEMALE SALE

**2025**

SATURDAY APRIL 12 - 5:30 PM

Highmark Stock Farms - Hague, SK



# LEADING EDGE

## SPECKLE PARK BULL & FEMALE SALE

# 2025

SATURDAY APRIL 12 - 5:30 PM

Highmark Stock Farms - Hague, SK

## OFFERING

Yearling Bulls

Two-Year-Old Bulls

Purebred Heifers

Commercial Heifers

Exclusive Genetics

### Sale Staff

#### Auctioneer

Ryan Hurlburt: 306-292-9812

#### Ringside

Mark Stock: 403-357-8104  
Dory Gerrard: 403-302-1016

#### Insurance

Larry Toner: 306-932-4866  
or 306-834-7652

### Schedule of Events

#### Cattle Viewing at Highmark Stock Farms

April 11th, and morning of the 12th

#### On Farm Viewing

Available anytime prior to the 11th

#### Sale Day

Join us for Supper at 4:30 PM  
Sale Time - 5:30 PM

#### Delivery

We will assist in arranging transportation  
wherever possible.

### Sale Information

#### ACCOMMODATIONS

#### Quality Inn & Suites

306-244-5552  
1715 Idylwyld Drive North  
Saskatoon, SK S7L 1B4

#### Rates

Standard Single/Double Queen: \$114.00 +  
taxes & fees  
Main Floor Suites: \$134.00 + taxes & fees  
Please quote LEADING EDGE when making  
your reservation.

Or book online at: <http://www.choicehotels.com/CNA87?srp=LLEAD>

Rates includes complimentary breakfast in  
the Breakfast Room

#### Distance to:

Airport - 4 km  
Highmark Stock Farms - 46 km (Approx. 30 mins)

### Watch & Bid Online

[www.dlms.ca](http://www.dlms.ca)  
Mark Shologan: 306-292-9812

**D|L|M|S**  
[www.dlms.ca](http://www.dlms.ca)

**HIGHMARK**  
STOCK FARM

#### Highmark Stock Farm

Harv & Fran Fehr  
Box 342  
Hague, SK S0K 1X0  
306-290-6780 | 306-229-0092  
[highmark.hf@gmail.com](mailto:highmark.hf@gmail.com)



#### Green Hills Livestock

Glen & Barb Zerebeski  
Box 296  
Blaine Lake, SK S0J 0J0  
Glen: 306-497-7721  
Barb: 306-291-7173  
[greenhillslivestock@hotmail.com](mailto:greenhillslivestock@hotmail.com)



#### INC Cattle Company

Rob & Janice Harasymchuk  
29-602 Cartwright St  
Saskatoon, SK S7T 0M1  
[robh@maxies.ca](mailto:robh@maxies.ca) | [janiceh@maxies.ca](mailto:janiceh@maxies.ca)  
Rob: 306-290-7040  
Janice: 306-260-6200  
[www.inccattleco.ca](http://www.inccattleco.ca)

## Welcome to the Sale

I speak for the entire Leading Edge Group when I say how proud we are to be living in the greatest country in the world and it's an honour to have you join us once again for the 2025 edition of The Leading Edge Speckle Park Sale. We bring to you the very best of Canada's breed, created right here in the northern heartland.

Two years and two thousand carcasses have proven what we've said all along - the quality of these animals is second to none. Over 96% Triple A or better without implants and still over 93% Triple A or Prime with using enhancers. Our research was extensive and thorough. The data comes from various respected feeding programs and numerous buyers. The results were consistent and outstanding. The consumer wants what we have - the best beef to ever be put on a plate. Together let's storm the walls of mediocrity and show the world what we have. Thank you to everyone who plays a role in making this sale happen and now more than ever, Keep Your Elbows Up.

### The Leading Edge Group

## From the desk at T Bar C

Welcome to the 2025 edition of the "Leading Edge" Speckle Park Bull and Female Sale on Saturday, April 12th at Highmark Stock Farm, Hague, Saskatchewan. Your hosts, Harv and Fran, Rob and Janice, the founders, and Green Hills Livestock come together to offer endless breeding opportunities. Whether you are searching for your next herd bull, yearling or two-year-old, females ready to get bred in your front pasture or exciting frozen genetics, the lineup is deep in all divisions.

You will be impressed with the strength and genetic power led by the legend "Talladega" at INC in edition to several diverse breeding packages and the "Horatio" sire group at Highmark. The two-year-old bulls are stout in muscle and top, exhibit plenty of body length and all have acceptable calving data. These two-year-olds will cover more cows, bigger cows and cover more rough ground. The yearlings are fresh and new with a big future ahead. They exhibit muscle shape with style and great dispositions and will represent the breed in years to follow.

After a few decades of rapid growth, the breed has stabilized, and the cream has risen to the top. These breeding operations are dedicated and produce and supply some of the best seedstock in the world. The future in years ahead, in the production of livestock and beef, will be based on carcass quality... a level where marbling, taste and tenderness will pay rewards to the producer. If we want cheap beef, we can get it from Brazil, but for quality, we must raise it domestically... and the cattle offered today fit right in the Speckle Park wheelhouse.

The female section of this event is futuristic and exciting. Front pasture foundation prospects, show prospects.... opportunities for juniors of all ages. The commercial Speckle Park are as good as one can find and when this cow rebuilding is complete, they are and will be high value property. The frozen genetics are set and ready to use as we start the spring breeding season. The "Easter Baskets" give livestock enthusiasts big or small, young and old affordable opportunity.

These progressive breeders have acquired a new sire to expand their genetic base... this New Zealand product is next generation material, and they are willing to share some with you.

If we at T Bar C, may be of any assistance prior to or sale day, do not hesitate to call any of our team and we will be pleased to assist in a professional and confidential manner.



**Chris Poley**  
306-220-5006



**Shane Michelson**  
403-363-9973



**Ben Wright**  
519-374-3335



**Levi Rimke**  
204-851-4515

**Chris Poley**



# WELCOME TO THE 2025 LEADING EDGE SALE

Great cattle. Fantastic hospitality. Good friends. It doesn't get any better...INC Cattle Company welcomes everyone to enjoy The Leading Edge!

Rob & Janice Harasymchuk  
**INC Cattle Company**

## TEST RESULTS

Updated test results regarding Homo/Hetero Polled Status, Coat Colour, and the Myostatin Gene will be available on sale day and posted on Facebook/BuyAgro.



# YEARLING BULLS



**01**

## 01 INC NATIONAL POST 11M

MALE CAN21078-PB INC 11M 10/1/2024

Polled  
**PP**  
 Coat Colour  
**ED/ED**  
 Myostatin  
**Carrier**

OUTBACK JOEY 25D  
**INC TALLADEGA 11J**  
 SPOTS 'N SPROUTS 3R  
 RIVER HILL TRAFFIC JAM 26T  
**PURA VIDA ALEJANDRA 39A**  
 STYALS RKW 7P

CODIAK OH MY GOSH GNK 60A  
 RIVER HILL 54Z BELLA-JOY 25B  
 STAR BANK LACERTA 68L  
 SPOTS'N SPROUTS 5J  
 A & W JOEY 55P  
 CALAMASUE 26R  
 HWY.4 SPECKLE PARK 20K  
 CODIAK RKW 08J

**BW: 88 lbs 205D WT: 594 lbs**

With a commanding presence, beautiful extension & perfect structure, INC National Post 11M is a tremendous yearling. Handsome enough to be on the cover of GQ magazine, 11M seemingly glides when he walks. With a big performance momma behind him, this Talladega son has been a standout from Day 1. National Post is the type of calf on which legends are built.



SIRE INC Talladega 11J



DAM Pura Vida Alejandra 39A

**02****INC BIG DEAL 25M**

MALE UNR21596 INC 25M 16/1/2024

Polled  
PP  
Coat Colour  
ED/ED  
Myostatin  
Carrier

OUTBACK JOEY 25D  
**INC TALLADEGA 11J**  
SPOTS 'N SPROUTS 3R

CODIAK HOMBRE GNK 26X  
**CODIAK NANCY GNK 84A**  
STYALS MISS LIGHTNING 16M

CODIAK OH MY GOSH GNK 60A  
RIVER HILL 54Z BELLA-JOY 25B  
STAR BANK LACERTA 68L  
SPOTS'N SPROUTS 5J  
CODIAK TIMOTHY GNK 22T  
CODIAK URE IT GNK 48U  
CODIAK PRAIRIE FIRE 10J  
LIGHTNING LADY 10C

**BW: 90 lbs 205D WT: 555 lbs**

INC Big Deal 25M is .... well... a damn big deal. Big hip, big top, and long as an old man's story, Big Deal is ready to go to work. Tough to find one better. Another outstanding Talladega son.



DAM Codiak Nancy GNK 48A



SIRE INC Talladega 11J

**02****03****INC TRIPLE PLAY 26M**

MALE UNR21597 INC 26M 16/1/2024

Polled  
PP  
Coat Colour  
ED/ED  
Myostatin

RIVER HILL 50U ALL IN 60A  
**UNDERHILL ALL OUT 1D**  
SPOTS 'N SPROUTS 10S

COLGAN'S FANFARE 26F  
**OUTBACK BOLD N BLACK 30J**  
SPOTS 'N SPROUTS EMMA 16E

RIVER HILL 68L STRIKER 50U  
RIVER HILL SHOW ME OFF 60S  
CDS FARMS PAUL 2M  
JANE OF P.A.R. 12J  
CODIAK PUTNAM GNK 61Y  
CODIAK URE IT GNK 48U  
NOTTA 68L CUSTOM CHROME 106Y  
SPOTS 'N SPROUTS 7X

**BW: 78 lbs 205D WT: 550 lbs**

Looking for something a little different? Check out INC Triple Play 26M's lines. Deep, thick and smooth moving, Triple Play has a great foot and plenty of muscle. Built for performance and longevity.



SIRE Underhill All Out 1D

**03**

04

# INC GRAN TORINO 18M

MALE UNR21071 INC 18M 13/1/2024

Polled  
PP  
Coat Colour  
ED/ED  
Myostatin  
Non-Carrier

RIVER HILL GODZILLA 916G  
**RH 916G KODAK BLACK 226K**  
PURA VIDA ESTIMA 95E  
INC BREAKING NEWS 63F  
**INC ALL ABOARD 190J**  
SIX STAR DIAMOND 23X

PREMIER 101Y LOGIC L11  
RIVER HILL 26T WHISTLER 38W  
RIVER HILL 54Z CO-PILOT 38C  
PURA VIDA WILLAMINA 18W  
CAJA ZEPPELIN 1B  
UPTO SPECS WILLA 17W  
NOTTA ROMEO 64R  
STAR BANK 89S

**BW: 75 lbs**

Gran Torino is special - no he can't juggle flaming knives or recite the multiplication table - but INC 18M is a cut above nonetheless. Smooth from nose to tail, Gran Torino shares his sire's style while his momma places easily in the top 5% of the INC herd. Lots of depth and made right, 18M will not disappoint. A very, very good calf.



**SIRE** RH 916G Kodak Black 226K



**DAM** INC All Aboard 190J



*Maureen  
@Browny*



*Maureen  
@Browny*



**05**

Polled  
PP  
Coat Colour  
ED/ED  
Myostatin  
-

RIVER HILL GODZILLA 916G  
**RH 916G KODAK BLACK 226K**  
PURA VIDA ESTIMA 95E  
INC SIX GUN 428F  
**INC ARLENE 70J**  
SILVER TIP ENGEL 23E

**INC PROMOTION 28M**

MALE UNR21598 INC 28M 17/1/2024

PREMIER 101Y LOGIC L11  
RIVER HILL 26T WHISTLER 38W  
RIVER HILL 54Z CO-PILOT 38C  
PURA VIDA WILLAMINA 18W  
CAJA ZEPPELIN 1B  
UPTO SPECS WILLA 17W  
SILVER TIPS SPECIAL PRIDE 02A  
SILVER TIP ANGELICA STS 03B

**BW: 89 lbs 205D WT: 630 lbs**

INC Promotion 28M is so athletic it's a wonder he wasn't picked for Team Canada to play in the Four Nations Cup. It would have been awesome to see him on a line with Connor McDavid or to watch him kick Brady Tkachuk right in the head, knocking him simple. With a great set of wheels under him and muscles ripping under his beautiful hide, Promotion is the first round pick to play on your team.



**GRANDDAM** Pura Vida Williamina 18W

**05**



**06**

Polled  
PP  
Coat Colour  
ED/ED  
Myostatin  
-

OUTBACK JOEY 25D  
**INC TALLADEGA 11J**  
SPOTS 'N SPROUTS 3R  
RIVER HILL 101U XPORTER 55X  
**PINE VALLEY ARIEL 6C**  
CODIAK RONNIE CDK 34R

**INC NEW YORK TIMES 7M**

APPLIED FOR INC 7M 9/1/2024

CODIAK OH MY GOSH GNK 60A  
RIVER HILL 54Z BELLA-JOY 25B  
STAR BANK LACERTA 68L  
SPOTS'N SPROUTS 5J  
RIVER HILL TRAFFIC JAM 26T  
RIVER HILL SAFIRE 55S  
SAGE LAD 3L  
ODIAK MARIE RKW 73M

**BW: 87 lbs ADJ 205: 603 lbs**

Another perfect embryo combination - Talladega and the perfectly uddered cow DCF 6C.

**06**



**SIRE**  
INC Talladega 11J





## WELCOME TO THE 2025 LEADING EDGE SALE

We are honored to be hosting the 2025 edition of the Leading Edge Sale! Last year was a huge success once again, and we want to thank all the bidders and buyers for all your support.

Highmark is committed to putting our best foot forward, offering only the animals that will enhance the herds of Purebred and commercial breeders alike.

As many of our fellow breeders know, it was another tough pasture year with a lack of moisture, but we are still pleased with our offering this year.

We are proud to again be partnering with INC Cattle Co and Greenhills Livestock.

We hope to see you at the sale, but if you are unable to make it in person, there is the option to visit online!

Harv & Fran Fehr  
Highmark Stock Farms

HIGHMARK  
STOCK FARM

07

### HIGHMARK MASTERPIECE 4M

MALE CAN20156-PB HMK 4M 23/1/2024

Polled  
PP  
Coat Colour  
ED/ED  
Myostatin  
Non-Carrier

PREMIER 101Y LOGIC L11	SIX STAR 82U ROYAL FLESH 101Y
<b>RIVER HILL L11 HORATIO 005H</b>	SPKNZ H2
RIVER HILL 54Z CHANÉL 25C	RIVER HILL 60W LINE DRIVE 54Z
	RIVER HILL 68 ULTIMATE JOY 25U
RIVER HILL BACKGROUNDER 025B	RIVER HILL 26T YAGER 99Y
<b>FANCY FEET OF P.A.R. 101F</b>	RIVER HILL 64S WHISPER 25W
ASPEN ACRES PRINCESS GIRL 01P	P.A.R. KING PIN 1K
	ASPEN ACRES EDDIE'S GIRL 1G

BW: 50 lbs 205D WT: 566 lbs FEB 26/2025 WT: 960 lbs

Masterpiece represents what we're striving for in our females. His dam, Fancy Feet, walks on good feet, has the perfect udder, and breeds back first cycle consistently. Don't be concerned with the weights as Masterpiece was raised alongside his twin sister.



SIRE River Hill L11 Horatio 005H



07



SIRE River Hill L11 Horatio 005H



DAM KFC Josie 56J

08

**HIGHMARK MAGNUM 11M**

MALE CAN20535-PB HMK 11M 29/1/2024

Polled  
PP  
Coat Colour  
ED/ED  
Myostatin  
Non-Carrier

PREMIER 101Y LOGIC L11	SIX STAR 82U ROYAL FLESH 101Y
<b>RIVER HILL L11 HORATIO 005H</b>	SPKNZ H2
RIVER HILL 54Z CHANÉL 25C	RIVER HILL 60W LINE DRIVE 54Z
	RIVER HILL 68 ULTIMATE JOY 25U
	RIVER HILL 26T WALKER 60W
RIVER HILL 60W EXCALIBUR 345E	PRAIRIE HILL DREAMAKER 88K
<b>KFC JOSIE 52J</b>	SPOTS 'N SPROUTS WAMPUM 102W
SPOTS 'N SPROUTS 4Y	SPOTS 'N SPROUTS 2W

**BW: 97 lbs 205D WT: 703 lbs FEB 26/2025 WT: 1146 lbs**

Magnum is put together the way a bull should be. He's been an eye catcher whenever someone entered the pen. Lots of performance here.

09

**HIGHMARK MAVERICK 13M**

MALE CAN20536-PB HMK 13M 2/2/2024

Polled  
PP  
Coat Colour  
ED/ED  
Myostatin  
Non-Carrier

CODIAK MONUMENT GNK 107D	CODIAK OSCAR GNK 8S
<b>CODIAK CORBIN GNK 31H</b>	CODIAK UNIQUE GNK 8R
CODIAK STAR BLACK GNK 58D	RIVER HILL TRAFFIC JAM 26T
	CODIAK WILMA GNK 3W
UNEEDA DOMINATOR 106D	P.A.R. BAZOOKA 60B
<b>OUTBACK CHROMED UP 102G</b>	XTRAVAGANT OF UNEEDA 106X
OUTBACK AURORA 102E	NOTTA 101Y BARCODE 113B
	RAVENWORTH AURORA 102C

**BW: 87 lbs 205D WT: 661 lbs FEB 26/2025 WT: 1048 lbs**  
 Maverick was one we struggled to put in the sale. He just has that presence about him. His dam is co-owned with Black Diamond in Australia, and is turning into one of our top brood cows.



10

**HIGHMARK MINISTER 14M**

MALE CAN20705-PB HMK 14M 3/2/2024

Polled  
PP  
Coat Colour  
ED/ED  
Myostatin  
Non-Carrier

MAUNGAHINA KIDMANS COVE	SPKNZ FALCON
<b>MATAKANA PROPHET</b>	MAINSTREAM E12
MAUNGAHINA L271	SPOTS 'N SPROUTS STANDS ALONE
	SPKNZ SPN H14
AVERY CREEK BANJO 01B	ZORRO MATTERS 1Z
<b>CODIAK ASTRID GNK 100G</b>	TUMBLEWEED ACRES LULU 18Y
CODIAK CAROLINE GNK 33C	CODIAK SAILOR BOY GNK 20Y
	CODIAK ABBY GNK 2A

**BW: 84 lbs 205D WT: 516 lbs FEB 26/2025 WT: 1005 lbs**  
 Minister is our black offering this year. Minister is long with a good top line. He has a unique pedigree with Matakana Prophet as his sire. His dam, Astrid, is perfect uddered and quiet as a church mouse.





**11** HIGHMARK MAHARE 28M  
 MALE CAN21377-PB HMK 28M 11/2/2024

Polled PP  
 Coat Colour ED/ED  
 Myostatin Non-Carrier

UNEEDA YAEL 06Y  
**SPOTS 'N SPROUTS DRONE 105D**  
 NOTTA 15R LIGHTNING LADY 1A

RAVENWORTH HORIZON 103A  
**PURA VIDA CONCHITA 67C**  
 PURA VIDA ZAVIERA 34Z

CODIAK OSCAR GNK 8S  
 TAMMY OF P.A.R. 06T  
 A & W 15R  
 STAR BANK 45R  
 RIVER HILL 101U XODUS 60X  
 STAR BANK 15  
 CODIAK HOMBRE GNK 26X  
 PURA VIDA FRANCESCA 2T

**BW: 90 lbs 205D WT: 688 lbs FEB 26/2025 WT: 1062 lbs**  
 Mahare was always one of our top bull prospects. Early maturing, easy fleshing, and put together just right. His dam, Conchita, is again rearing natural calves after an extensive embryo flush program, and doing it well. Look for Mahare to add performance and sire daughters that milk down the house.



**GRANDDAM** Pura Vida Franchesca 2T **DAM** Pura Vida Conchita 67C



**12** HIGHMARK MANHATTAN 57M  
 MALE CAN21378-PB HMK 57M 26/2/2024

Polled PP  
 Coat Colour ED/ED  
 Myostatin Non-Carrier

RAVENWORTH RUBICON 103F  
**RAVENWORTH ENERGY 304H**  
 RAVENWORTH NORTHERN STAR 120F

COUNTRYSIDE YLANDER 7Y  
**COUNTRYSIDE BRIDGET 46B**  
 D.L.R. LEILANI 2W

RAVENWORTH INVICTUS 103C  
 RAVENWORTH ACADIA 5Y  
 SPOTS 'N SPROUTS CHOREBOY 109C  
 RAVENWORTH NORTHERN STAR 117B  
 CALAMASUE 46U  
 JO JO OF P.A.R. 11P  
 MOOVIN ZPÖTZ TOP GUN 3T  
 D.L.R. NOVA 12R

**BW: 88 lbs 205D WT: 625 lbs FEB 26/2025 WT: 1050 lbs**  
 Manhattan combines the style of his sire and the power and performance of his dam, who is now over 10 years old and looking great. Manhattan exhibits balance and moves freely. Take a look!!



# TWO-YEAR-OLD BULLS

Our good friend Keith Kissee once said to us, in his wonderful southern drawl, "The cheapest thing a cattleman can buy in an expensive bull." We still feel his loss deeply and hardly a day goes by that we don't think of him. INC and Prestwold worked closely together for a number of years and it's from this relationship that some of our offerings have resulted.

<b>13</b>	<b>INC CHURCHILL 110L</b>		
	MALE	UNR21632	INC 110L 16/2/2023
Polled PP	RIVER HILL TRAFFIC JAM 26T	A & W JOEY 55P	
Coat Colour ED/ED	<b>INC GOLIATH 747G</b>	CALAMASUE 26R	
Myostatin Non-Carrier	CODIAK GYPSY RAIN GNK 63B	CODIAK OSCAR GNK 8S	
	RIVER HILL DUN IN BLACK 51D	CODIAK SHELLY GNK 11X	
	<b>INC BROOKS N DUNN 7F</b>	STAR BANK LACERTA 68L	
	MOOVIN ZPOTZ BROOKS 75B	RIVER HILL CINDER 5M	
		UNEEDA XIMEON 06X	
		CLEAR VIEW MILKYWAY 204R	

**BW: 87 lbs 205D WT: 592 lbs APRIL 8/24 WT: 940 lbs**

**MARB: 3.5 REA: 8.64 %LMY: 65.26 BF<sup>(mm)</sup>: 0.50**

INC Churchill 110L is a heavyweight. Big power and performance here. Churchill is easily one of the best bulls to come out of our program. He's a white freight train of rib and hip. He will easily cover plenty of cows. There are simply no holes in this herd sire - even though he doesn't speak Spanish and he isn't very good at origami.



**SIRE** INC Goliath 747G



**DAM** INC Brooks N Dunn 7F



**14 INC TURBO CHARGED 115L**  
 MALE APPLIED FOR INC 115L

Polled PP	CODIAK END TO END GNK 802E <b>ANDCHRIS JACKPOT 17J</b>	CODIAK OSCAR GNK 8S CODIAK GNK 53W P.A.R. XCALABAR 6X ANGEL OF P.A.R. 8U CODIAK PHLEP GNK 3P CODIAK MATEUSA RKW 63M P.A.R. NIGEL 111N TRIPLE A CLASSY GAL 35H
Coat Colour ED/ED	ANGEL OF P.A.R. 8Z	
Myostatin -	CODIAK OSCAR GNK 8S <b>CODIAK BERNITA GNK 11B</b> A & W 35U	

205D WT: **563 lbs** APRIL 8/24 WT: **920 lbs**  
 MARB: **3.8** REA: **9.98** %LMY: **65.63** BF<sup>(mm)</sup>: **1.20**  
 INC Turbo Charged 115L is a prime example of what we want to see in a bull at INC. Smooth- shouldered, long-spined and with a big foot. 115L strides out well and he has so much muscle. Make no mistake, this is a herd sire to keep an eye on. We expect big things from him.



**15 INC AUTOPILOT 59L**  
 MALE CAN19605 INC 59L 30/1/2023

Polled PP	ARATAH JUST CHILLIN J154 <b>BLACK DIAMOND MARCHO MAN</b>	WARATAH EDDIE E22 WARATAH EMBER E26 STAR BANK LACERTA 68L WILDWOOD KARA 4K RIVER HILL 101U XODUS 60X STAR BANK 1S CODIAK HOMBRE GNK 26X PURA VIDA FRANCESCA 2T
Coat Colour ED/ED	SIX STAR SPC 68L KARA E220	
Myostatin Non-Carrier	RAVENWORTH HORIZON 103A <b>PURA VIDA CONCHITA 67C</b> PURA VIDA ZAVIERA 34Z	

BW: **83 lbs** 205D WT: **611 lbs** APRIL 8/24 WT: **1105 lbs**  
 MARB: **4.8** REA: **12.36** %LMY: **66.36** BF<sup>(mm)</sup>: **2.38**  
 With a tidy head and lots of extension, this barrel-chested long yearling promises calving ease. INC Autopilot 59L is another outcross opportunity for the purebred breeder and would work well on heifers or he can cover plenty of cows. He does have a tattoo, but doesn't have any known gang affiliations.



SIRE Black Diamond Marcho Man DAM Pura Vida Conchita 67C

**16****INC INCENTIVE 181L**

MALE UNR21592 INC 181L 16/3/2023

Polled  
PP  
Coat Colour  
ED/ED  
Myostatin  
-

CODIAK END TO END GNK 802E	CODIAK OSCAR GNK 8S
ANGEL OF P.A.R. 8Z	CODIAK GNK 53W
RIVER HILL 60W LINE DRIVE 54Z	P.A.R. XCALABAR 6X
<b>INC HUNTRESS 74G</b>	ANGEL OF P.A.R. 8U
MORNING STAR BEV 2B	RIVER HILL 26T WALKER 60W
	NOTTA PHO-FINISH 54P
	CODIAK SUMMIT SUPREME GNK 10Z
	MORNING STAR XIA 2X

BW: **88 lbs** 205D WT: **653 lbs** APRIL 8/24 WT: **926 lbs**MARB: **3.7** REA: **10.82** %LMY: **66.93** BF<sup>(mm)</sup>: **0.60**

Here we go to another level with INC Incentive 181L. Not so very long ago we could only dream of owning a bull as good as Incentive, now we can offer him up to the world. He's the epitome of power & performance. Big feet, extra rib and so much depth. Simply a mass of black & white, ready to roam your pasture. 181L's calves will be killer good.



GRANDSIRE Codiak End to End GNK 802E



GRANDSIRE River Hill 60W Line Drive 54Z

**16****17****INC STEEL PLATED 45L**

MALE UNR19591 INC 45L 21/1/2023

Polled  
PP  
Coat Colour  
ED/ED  
Myostatin  
Non-Carrier

CODIAK PUTNAM GNK 61Y	CODIAK OSCAR GNK 8S
<b>COLGAN'S FANFARE 26F</b>	NORTHERN LIGHTS 14N
CODIAK URE IT GNK 48U	CODIAK KOSMO GNK 17R
MOOVIN ZPOTZ AVENGER 28A	NORALTA HALETTE 11H
<b>OUTBACK HOLLY 154C</b>	MOOVIN ZPOTZ CAMARO 6X
AMPED UP OF MX 154A	HWY 4 SPECKLE PARK 4R
	P.A.R. X-EL 54X
	XANDRA OF MX 15X

BW: **88 lbs** APRIL 8/24 WT: **990 lbs**MARB: **4.7** REA: **10.79** %LMY: **65.47** BF<sup>(mm)</sup>: **2.00**

A solid long yearling that will work on heifers, INC Steel Plated 45L boasts a diverse pedigree. 45L has very cool colouring and a smooth stride. This young herd sire can be used just about anywhere.

**17**



**18** **INC SILENT RUNNING 98L**  
 MALE APPLIED FOR INC 98L

Polled PP	UNDERHILL ALL OUT 1D <b>GREENWOOD COAL TRAIN 84J</b>	RIVER HILL 50U ALL IN 60A SPOTS 'N SPROUTS 10S
Coat Colour ED/ED	RAVENWORTH WILLOW 135E	RAVENWORTH INVICTUS 103C RAVENWORTH WILLOW 104B
Myostatin Non-Carrier	CODIAK PUTNAM GNK 61Y <b>CODIAK CASEY GNK 16C</b> CODIAK MEESHA GNK 6Y	ODIAK OSCAR GNK 8S NORTHERN LIGHTS 14N LEGACY UNRVALED 12U CODIAK RONNIE CDK 34R

205D WT: **648 lbs** APRIL 8/24 WT: **962 lbs**  
 MARB: **3.9** REA: **10.82** %LMY: **66.31** BF<sup>(mm)</sup>: **1.20**  
 As far as we know INC Silent Running 98L has never been in trouble with the law, although he did try to run away from home when he was little. We found him down the road, a couple of miles from home, crying for his mom. 98L is a big bull with a soft demeanour. He offers ample scrotal and plenty of length. Silent Running is ready to work and will last a long time in your herd. As solid as they come.



SIRE Greenwood Coal Train 84J



**19** **INC UNITED FRONT 85L**  
 MALE CAN19593-PB INC 85L 11/2/2023

Polled PP	SPOTS 'N SPROUTS STANDS ALONE <b>PARKVALE MARK</b>	STYALS LIGHTNING LADD 14P SPOTS 'N SPROUTS 2R
Coat Colour ED/ED	PARKVALE HARRIET	SPKNZ EXTREME E27 SPKNZ E42
Myostatin Non-Carrier	SILVER TIPS SPECIAL PRIDE 02A <b>SILVER TIP ENGEL 23E</b> SILVER TIP ANGELICA STS 03B	REMIN'S SPECIAL 1L JENCREST PANDA 3X SILVER TIP KINGSPASSION 03Z SILVER TIPS ANGEL HEART 01Y

205D WT: **661 lbs** APRIL 8/24 WT: **938 lbs**  
 MARB: **4.7** REA: **10.98** %LMY: **66.34** BF<sup>(mm)</sup>: **1.30**  
 INC United Front 85L will be a home run hit for the new owner. For the purebred producer he offers some diverse genetics while the commercial cattleman can count on big, growthy calves come sale day. A big bull with an easy stride, United Front is smooth-shouldered and is easy to work. A standout from the beginning.



SIRE Parkvale Mark



**20****INC SIBERIA 227L**

MALE UNR19677 INC 227L 13/1/2023

Polled  
PP  
Coat Colour  
-  
Myostatin  
-OUTBACK JOEY 25D  
**INC TALLADEGA 11J**  
SPOTS 'N SPROUTS 3RRAVEN MEADOWS MAGNUM 10N  
**UPTO SPECS WILLA 17W**  
UPTO SPECS RAE 2RCODIAK OH MY GOSH GNK 60A  
RIVER HILL 54Z BELLA-JOY 25B  
STAR BANK LACERTA 68L  
SPOTS'N SPROUTS 5J  
SPRUCE LANE VENTURE 3J  
PARKLAND SPECKLE PARK 10J  
PRAIRIE HILL NEW DEAL 85N  
UPTO SPECS NOLA 21N**BW: 89 lbs** 205D WT: **672 lbs** APRIL 8/24 WT: **934 lbs****MARB: 4.5** REA: **11.60** %LMY: **67.15** BF<sup>(mm)</sup>: **1.00**

After this one, there ain't anymore. This is the last of the All Star pairing of Talladega & Willa 17W. To claim that INC Siberia 227L is merely a tremendous bull, it would be like saying the Eiffel Tower is kinda tall. Power. Performance. Perfection. Siberia is show-stopper good. Thick & long & deep. You can feel his presence when you see him. If you want extra pounds on your calves next fall, look no further.



DAM Upto Specs Willa 17W



SIRE INC Talladega 11J

**20****21****INC DRAFT PICK 120L**

MALE UNR21591 INC 120L 22/2/2023

Polled  
PP  
Coat Colour  
ED/ED  
Myostatin  
-CAJA ZEPPELIN 1B  
**INC BREAKING NEWS 63F**  
UPTO SPECS WILLA 17WP.A.R. MOO FASSA 03M  
**INC ARCTIC FROST 7G**  
STAR BANK WITCHES BREW 16WUNEEDA ZAPPER 13Z  
NOTTA 60W PHOTO-FINISH 1Z  
RAVEN MEADOWS MAGNUM 10N  
UPTO SPECS RAE 2R  
P.A.R. KING PIN 1K  
ASPEN ACRES 3A  
NOTTA ROMEO 64R  
STAR BANK 89S**BW: 86 lbs** 205D WT: **665 lbs** APRIL 8/24 WT: **894 lbs****MARB: 4.5** REA: **10.58** %LMY: **65.82** BF<sup>(mm)</sup>: **1.50**

INC Draft Pick 120L has his faults...he can't use chop sticks worth a damn, he doesn't know all the words to "Stairway to Heaven", nor can he play ping pong... if these things don't matter to you, but you do want one of the very best 2 year old bulls to come out of the 2025 Leading Edge sale, then 120L is your boy. He has a top like a tennis court and fantastic wheels under him. A very good bull with many years in front of him.



SIRE INC Breaking News 63F

**21**



22

**INC STAMP OF APPROVAL 37L**

MALE CAN18519-PB INC 37L 18/1/2023

Polled  
PP  
Coat Colour  
ED/ED  
Myostatin  
Carrier

CODIAK OH MY GOSH GNK 60A  
**OUTBACK JOEY 25D**  
RIVER HILL 54Z BELLA-JOY 25B

STAR BANK LACERTA 68L  
**SPOTS 'N SPROUTS 3R**  
SPOTS'N SPROUTS 5J

CLEAR VIEW TY 205R  
CODIAK UNIQUE GNK 8R  
RIVER HILL 60W LINE DRIVE 54Z  
RIVER HILL 68 ULTIMATE JOY 25U  
SPOTS 'N SPROUTS JUNO 103J  
STAR BANK 55H  
P.A.R. GREAT WESTERN 11F  
SPOTS 'N SPROUTS 21E

BW: 92 lbs 205D WT: 658 lbs APRIL 8/24 WT: 950 lbs

MARB: 4.4 REA: 10.40 %LMY: 66.08 BF<sup>(mm)</sup>: 1.10

I don't know how many times we've been asked this question about INC Stamp of Approval 37L - "Why in God's name would we even consider selling the one & only full brother to Talladega, especially now that 11J is gone?" The answer is simple - we need the money.

Longer than a visit from your mother-in-law, deeper than the National debt, with enough nuts to keep a thousand squirrels busy, Stamp of Approval is built for performance. This bull is the king in waiting. A magnificent beast if ever there was one. Once he's walking your pasture, there are no limits to what he will do for your future.

**23****INC MINEFIELD 64L**

MALE CAN18595-PB INC 64L 5/2/2023

Polled  
PP  
Coat Colour  
ED/ED  
Myostatin  
CarrierOUTBACK JOEY 25D  
**INC TALLADEGA 11J**  
SPOTS 'N SPROUTS 3RCODIAK OH MY GOSH GNK 60A  
RIVER HILL 54Z BELLA-JOY 25B  
STAR BANK LACERTA 68L  
SPOTS 'N SPROUTS 5J  
RIVER HILL 60W LINE DRIVE 54Z  
RIVER HILL 64R DANDY 2U  
SPOTS 'N SPROUTS ACHLYS 111A  
SPOTS 'N SPROUTS 20BBW: **81 lbs** 205D WT: **593 lbs** APRIL 8/24 WT: **855 lbs**  
MARB: **3.8** REA: **10.76** %LMY: **66.88** BF<sup>(mm)</sup>: **0.60**

They don't get any better than this - INC Minefield 64L has the extra rib everyone wants, a hip the size of a Volkswagen and he moves as smooth as a stripper on the pole. 64L is so handsome, all the other bulls are jealous and the heifers bat their eyelashes at him whenever he walks by. You won't go wrong with this black Casanova.



GRANDSIRE Outback Joey 25D

**24****INC GRIDLOCK 90L**

MALE UNR21589 INC 90L 12/2/2023

Polled  
PP  
Coat Colour  
ED/ED  
Myostatin  
Non-CarrierCAJA ZEPPELIN 1B  
**INC BREAKING NEWS 63F**  
UPTO SPECS WILLA 17WUNEEDA ZAPPER 13Z  
NOTTA 60W PHOTO-FINISH 1Z  
RAVEN MEADOWS MAGNUM 10N  
UPTO SPECS RAE 2R  
CODIAK EAGLE GNK 46Y  
CODIAK UNIQUE GNK 8R  
MZ YOGI OF COLD CREEK 17Y  
MOOVIN ZPOTZ ZWEETHEART 45ZBW: **85 lbs** 205D WT: **635 lbs** APRIL 8/24 WT: **930 lbs**  
MARB: **4.5** REA: **9.19** %LMY: **63.76** BF<sup>(mm)</sup>: **2.40**

Another white powerhouse from INC. Gridlock 90L has the size, the confirmation and the stride that we want in our bulls. 90L will cover the miles on his manhole-sized feet and he has an ass bigger than Khloe Kardashian's. Longer than a curling rink, Gridlock will make tremendous calves that will weigh up big in the fall. This Breaking News son was bred with performance in mind.





# PUREBRED HEIFERS



<b>25</b>	<b>INC PEGGY SUE 33M</b>		
	FEMALE	CAN21215-PB	INC 33M 21/1/2024
Polled PP	RIVER HILL TRAFFIC JAM 26T	A & W JOEY 55P CALAMASUE 26R	
Coat Colour ED/ED	<b>INC GOLIATH 747G</b>	CODIAK OSCAR GNK 8S	
Myostatin Non-Carrier	CODIAK GYPSY RAIN GNK 63B	CODIAK SHELLY GNK 11X CODIAK PUTNAM GNK 61Y	
	COLGAN'S FANFARE 26F	CODIAK URE IT GNK 48U	
	<b>OUTBACK BLACKHEART 28J</b>	NOTTA 101Y BARCODE 113B	
	OUTBACK HOLLY WOOD 17F	OUTBACK HOLLY 154C	

**BW: 69 lbs 205D WT: 545 lbs**  
 I'm pretty sure it's illegal to be this pretty....INC Peggy Sue 33M will be one of the finest mommas in the breed. Gorgeous extension with a big middle and plenty of hip, 33M has generations of proven females before her, on both sides. A truly magnificent young lady.



**SIRE INC Goliath 747G**

**26****INC FLASHY GIRL 22M**

FEMALE UNR21617 INC 22M 14/1/2024

Polled  
PP  
Coat Colour  
ED/ED  
Myostatin  
-

OUTBACK JOEY 25D  
**INC TALLADEGA 11J**  
SPOTS 'N SPROUTS 3R

RIVER HILL 101U XPORTER 55X  
**PINE VALLEY ARIEL 6C**  
CODIAK RONNIE CDK 34R

CODIAK OH MY GOSH GNK 60A  
RIVER HILL 54Z BELLA-JOY 25B  
STAR BANK LACERTA 68L  
SPOTS'N SPROUTS 5J  
RIVER HILL TRAFFIC JAM 26T  
RIVER HILL SAFIRE 55S  
SAGE LAD 3L  
CODIAK MARIE RKW 73M

**BW: 89 lbs 205D WT: 507 lbs**

Again and again, these Talladega females continue to surprise us with how good they're made. INC Flashy Girl 22M is the perfect balance of style, functionality & performance. A tremendous Canadian Girl with so much future in front of her. 22M will not disappoint.

**27****INC NEVADA TICKET 10M**

FEMALE CAN21211-PB INC 10M 10/1/2024

Polled  
PP  
Coat Colour  
ED/ED  
Myostatin  
Non-Carrier

OUTBACK JOEY 25D  
**INC TALLADEGA 11J**  
SPOTS 'N SPROUTS 3R

NOTTA 101Y BARCODE 113B  
**OUTBACK HOLLY WOOD 17F**  
OUTBACK HOLLY 154C

CODIAK OH MY GOSH GNK 60A  
RIVER HILL 54Z BELLA-JOY 25B  
STAR BANK LACERTA 68L  
SPOTS'N SPROUTS 5J  
SIX STAR 82U ROYAL FLESH 101Y  
SPOTS 'N SPROUTS 3R  
MOOVIN ZPOTZ AVENGER 28A  
AMPED UP OF MX 154A

**BW: 81 lbs 205D WT: 525 lbs**

We dare anyone to find another better than INC Nevada Ticket 10M. Jaw-dropping gorgeous and correct in every way, 10M sets a new standard in Speckle Park females. So smooth, so stylish and so feminine. A true knock out, yet built to work in your herd for a long, long time. It's not often a combination like this is made available. You need to get off your wallet for this one.





**28**  
 FEMALE CAN21205-PB INC 3M 7/1/2024  
 Polled PP  
 Coat Colour ED/ED  
 Myostatin Non-Carrier  
 OUTBACK JOEY 25D  
**INC TALLADEGA 11J**  
 SPOTS 'N SPROUTS 3R  
 STAR BANK LACERTA 68L  
**OUTBACK STAR FIRE 12C**  
 CODIAK PRAIRIE FIRE RKW 05J  
 CODIAK OH MY GOSH GNK 60A  
 RIVER HILL 54Z BELLA-JOY 25B  
 STAR BANK LACERTA 68L  
 SPOTS'N SPROUTS 5J  
 SPOTS 'N SPROUTS JUNO 103J  
 STAR BANK 55H  
 PRAIRIE HILL AFTER SHOCK 75G  
 POLAR 1A

**BW: 71 lbs 205D WT: 501 lbs**  
 If you're content with average females in an average herd, then please, stop reading right now - INC Tornado 3M is not for you. There's nothing middle-of-the-road about this elegant lady - she is hands down, unequivocally one of the best we've ever seen come out of our program. Tornado is a female that an entire herd will be built around.



**29**  
 FEMALE CAN21216-PB INC 16M 13/1/2024  
 Polled PP  
 Coat Colour ED/ED  
 Myostatin Non-Carrier  
 RAVEN MEADOWS MAGNUM 10N  
**CODIAK CRIKEY GNK 13U**  
 CODIAK RKW 07J  
 COLGAN'S FANFARE 26F  
**OUTBACK BLACK BEAUTY 16H**  
 SPOTS 'N SPROUTS EMMA 16E  
 SPRUCE LANE VENTURE 3J  
 PARKLAND SPECKLE PARK 10J  
 P.A.R. IMPACT 11G  
 ATIM LADY 3D  
 CODIAK PUTNAM GNK 61Y  
 CODIAK URE IT GNK 48U  
 NOTTA 68L CUSTOM CHROME 106Y  
 SPOTS 'N SPROUTS 7X

**BW: 73 lbs 205D WT: 556 lbs**  
 On a scale of 1 to 10 of excellence, INC Taylor Made easily scores a 437. Old school breeding on top and outstanding Outback genetics on the bottom have come together to make this big capacity female. So much rib and extra length make 16M a must have for any program. Functional, correct & beautiful. Who can ask for more?

30

# HIGHMARK MAE 1M

FEMALE CAN20146-PB HMK 1M 22/1/2024

Polled  
PP  
Coat Colour  
ED/ED  
Myostatin  
NT821,1-

PREMIER 101Y LOGIC L11	SIX STAR 82U ROYAL FLESH 101Y
<b>RIVER HILL L11 HORATIO 005H</b>	SPKNZ H2
RIVER HILL 54Z CHANÉL 25C	RIVER HILL 60W LINE DRIVE 54Z
WRANGLER MR PERFECT 8D	RIVER HILL 68 ULTIMATE JOY 25U
<b>RH 8D DAISY MAE 25J</b>	MOOVIN ZPOTZ AVENGER 28A
RIVER HILL 5C FYNN 57F	ANGEL OF P.A.R. 8Z
	CODIAK CAPITAINE GNK 5C
	RIVER HILL PALOMA 57P

BW: 85 lbs 205D WT: 571 lbs

Mae looks to be heading right where we thought she would. Horatio now had daughters in many herds and they don't disappoint. And her dam is turning into a herd fav. Great upside here!!



GRANDSIRE Wrangler Mr Perfect 8D



# THE CANADIAN BREED THAT IS CHANGING THE WORLD

# SPECKLE PARK



*Maureen @Browanny*

**31**

**HIGHMARK MIATA 12M**

FEMALE CAN20703-PB HMK 12M 1/2/2024

Polled  
PP  
Coat Colour  
ED/ED  
Myostatin  
Non-Carrier

MAUNGAHINA MAXIMUS  
**MATAKANA RUSH HOUR**  
MATAKANA NORAH

HIGHMARK MIDNIGHT TRAIN 7G  
**HIGHMARK JAHJA 2J**  
COLGAN'S FREYJA 02F

MAUNGAHINA KING OF KINGS  
SPKNZ E36  
MAINSTREAM ELDORADO E11  
MAUNGAHINA J36  
RIVER HILL 12X A'MAN 94A  
CDS FARMS LEXY 8P  
COLGAN'S CAPONE LF 05C  
CODIAK SMOKIN' ALICE GNK 53Y

**BW: 86 lbs 205D WT: 503 lbs**  
We've really liked what we've seen so far with our Rush Hour calves. He'll be used heavily again at Highmark. Great opportunity here!



**SIRE** Matakana Rush Hour

*D. H.*



**32**

**HIGHMARK MAJESTY 38M**

FEMALE CAN21278-PB HMK 38M 15/2/2024

Polled  
PP  
Coat Colour  
ED/ED  
Myostatin  
Non-Carrier

JSF BLINDSIDE 25C  
**HIGHMARK GRAND TRUNK 32G**  
SINGLE TREE BRITNEY 33B  
RIVER HILL GUSTOV 963G  
**GRAHAM CREEK JOPLIN 6J**  
ELENOR OF P.A.R. 6E

CODIAK CALVIN GNK 58Y  
MONNERY RIVER 3W  
STAR BANK CAPTAIN 21W  
STYALS LUCKY LADY 6P  
CODIAK GEAZA GNK 105D  
RIVER HILL 54Z EAZY-GOING 36E  
P.A.R. ARRÄST 38A  
MONALISA VII OF P.A.R. 6Z

**BW: 82 lbs 205D WT: 615 lbs**

Majesty will be one to watch for. Her dam is a mid sized prefect uddered young cow that milks down the house. And her sire Grand Trunk's pedigree is milk milk milk!!



**33**

**HIGHMARK MAGNOLIA 48M**

FEMALE CAN21280-PB HMK 48M 22/2/2024

Polled  
PP  
Coat Colour  
ED/ED  
Myostatin  
Non-Carrier

PREMIER 101Y LOGIC L11  
**RIVER HILL L11 HORATIO 005H**  
RIVER HILL 54Z CHANÉL 25C  
CODIAK OH MY GOSH GNK 60A  
**HIGHMARK GEM 22G**  
MORNING STAR ZIG 1Z

SIX STAR 82U ROYAL FLESH 101Y  
SPKNZ H2  
RIVER HILL 60W LINE DRIVE 54Z  
RIVER HILL 68 ULTIMATE JOY 25U  
CLEAR VIEW TY 205R  
CODIAK UNIQUE GNK 8R  
LEGACY UNRIVALED 12U  
MORNING STAR SWEET PEA 1U

**BW: 62 lbs 205D WT: 503 lbs**

We see Magnolia turning into one of those effortless easy keeping, easy breeding cows. Don't miss this one.



# COMMERCIAL HEIFERS

These F1 beauties are absolute knockouts. With Angus and Simmental mommas, these ladies are destined to become some of the very best brood cows in your program. Built the way you want them; pretty as can be, smooth as whiskey over ice & consistent as peas in a pod. Top females sired by some of the best Speckle Park bulls in breed.

**34** PEN OF 2 COMMERCIAL HEIFERS  
ANGUS / SIMMENTAL INFLUENCED



**35** PEN OF 2 COMMERCIAL HEIFERS  
ANGUS / SIMMENTAL INFLUENCED





# CUSTOMER TESTIMONIALS

Robyn and I chose to start breeding our commercial cows to Purebred Speckle Park after we had seen some purebred herds, and we immediately were impressed with all of the great qualities of the breed. Over the next few years, we struggled to find a market that saw the benefit of the breed. Then we were introduced to Rob and Janice and the INC cattle they were not only dedicated to breeding and developing, but also THEIR passion for the breed and promotion of the breed.

Whenever we sent calves to market, we would always receive at least 10 cents/lb less on comparable calves, sometimes even better-quality calves. We had many conversations with Rob and Janice about the inequality when marketing our calves the traditional way. We were aware of other commercial breeders making the same comments. They completely understood that if the purebred breeders weren't willing to support the commercial breeders, then the commercial end of the Speckle Park would more than likely fade away. We believe that this understanding drove them to develop the calf buyback program they now run.

For the past two years we have sold our calves back to the buyer's group that has been developed. We have grown up in the Purebred Simmental and the commercial Charolais world and have never known of a program like this! We have not had any stress when we want to sell our calves, all we do is call Vince and let him know how many calves we have to market, weights, and we negotiate a price, a price that WE are SATISFIED with! AS long as this program is running, we will NOT sell our calves thru the traditional market. This program saved our commercial herd from having to go in another direction.

The biggest compliment that we have ever been given was from Robyn's Mom who told us before she passed in December that she was SO PROUD of us for what we've done with our cattle herd despite all of the setbacks in the beginning and she hoped that we continued to create great cattle that we are proud of.

**Jason, Robyn, Tucker, & Cody**  
Oldman Creek Ranch



**36** 2 COMMERCIAL HEIFERS

**37** 2 COMMERCIAL HEIFERS

Commercial Heifers sired by either Highmark Jaden 32J or KFC Keynote 19K.

**HIGHMARK JADEN 32J**

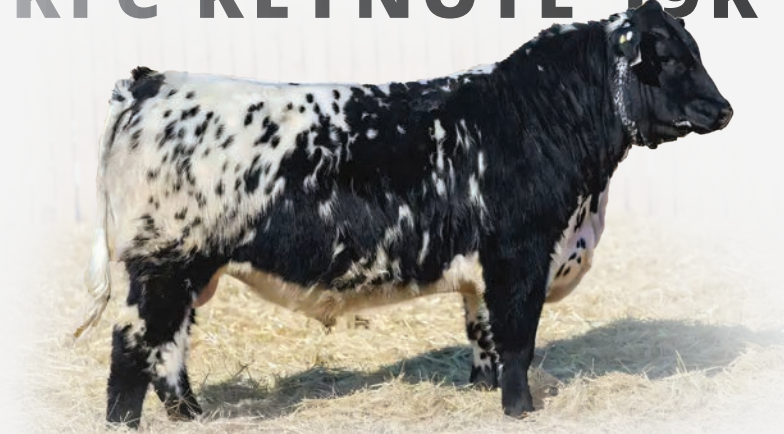


**SIRE OF JADEN 32J**  
CN Zpotz Zazu 2Z



**MAT. GRANDSIRE OF JADEN 32J**  
Wrangler Mr Perfect 8D

**KFC KEYNOTE 19K**



**SIRE OF KEYNOTE 19K**  
Colgan's Guardian 43G



**MAT. GRANDSIRE OF KEYNOTE 19K**  
Premier 101Y Logic L11



## WELCOME TO THE 2025 LEADING EDGE SALE

We're thrilled to once again be part of this exciting event alongside our forward-thinking partners, Highmark Stock Farm and INC Cattle Company. Every year, we're excited to showcase a unique offering that provides incredible opportunities for commercial cattle producers to enhance their herds with top-tier Speckle Park genetics.

As always, this sale is designed with you in mind—offering cattle that will help take your operation to the next level. We can't wait to see everyone on sale day, sharing a day of fellowship and camaraderie with fellow cattle producers who are as passionate about the industry as we are.

If you can't join us in person, don't worry! You can still be part of the action by bidding online through DLMS. Happy Bidding, and we look forward to connecting with you soon!

Glen & Barb Zerebeski  
Green Hills Livestock



# BRED COMMERCIAL COWS

## 38 1 BRED COMMERCIAL COW BRED & Sired BY TOP PUREBRED SPECKLE PARK BULLS

### Commercial Speckle Park Cow - Bred to a Top Purebred Speckle Park Bull

Don't miss the opportunity to add this outstanding Commercial Speckle Park Cow to your herd! She's the daughter of our legendary herd sire, BED 5Y (a Traffic Jam son), and is bred to the powerful River Hill 5C Freedom 805F. This cow exemplifies the very best of Speckle Park genetics.

With her deep body, flawless structure, and stunning udder, she's a heavy milker with a calm, easy-going temperament and remarkable maternal instincts. She's the type of female that will elevate any herd, improving growth, docility, and milk production across the board.

This proven producer is just hitting her peak productive years, and her calf at foot is a testament to her excellent genetic potential. Whether you're looking to enhance performance, fertility, or overall herd quality, this cow is the perfect choice.

**Expected to calve between mid-March and early April, giving you the opportunity to start fresh with a top-tier addition to your herd. You won't be disappointed with the results she brings!**



GRANDSIRE River Hill Traffic Jam 26T



SERVICE SIRE River Hill 5C Freedom 805F

38

# FROZEN GENETICS

PROUDLY PRESENTED BY INC CATTLE COMPANY

## EASTER BASKETS

HAND-PICKED & PACKAGED BUNDLES OF THE BREED'S  
**TOP-OF-THE-LINE GENETICS**

Without a doubt, these are some of the most diverse & intriguing offerings ever made by INC. These groupings are chock-full of some of the very best frozen genetics in the breed. Buyers can get a bit of everything here - buy one or take 'em all. A fantastic opportunity for new breeders and established herds alike. It's not often you see a line up such as these, bundled together in a bow tied Easter basket!



**Premier 101Y Logic L11**  
 Sire of embryos in Packages A, C, & D



**INC Goliath 747G**  
 Sire of embryos in Packages A & B



**INC Breaking News 63F**  
 Semen in packages A & D



**INC Talladega 11J**  
 Semen in packages A, B, & C



**CAJA Zeppelin 1B**  
 Semen in packages B & C



**McMurry Speckle Park 300X 64L 524C**  
 Semen in packages B, C, & E



**P.A.R. Moo Fassa 03M**  
 Sire of embryos in Packages D & E



**Star Bank Witches Brew 16W**  
 Embryos in packages B, D, & E



**Pura Vida Callista 64C**  
 Embryos in package D



**Pura Vida Conchita 67C**  
 Embryos in package E

## 39A PACKAGE A

2 EMBRYOS, 3 SEMEN PACKAGES

### EMBRYO Premier 101Y Logic L11 x Codiak Britany GNK 40B

SIX STAR 82U ROYAL FLESH 101Y  
**PREMIER 101Y LOGIC L11**  
SPKNZ H2

CODIAK TRUMP GNK 20T  
**CODIAK BRITANEY GNK 40B**  
CODIAK UTAH 23U

### EMBRYO INC Goliath 747G x Morning Star Zig 1Z

RIVER HILL TRAFFIC JAM 26T  
**INC GOLIATH 747G**  
CODIAK GYPSY RAIN GNK 63B

LEGACY UNRIVALED 12U  
**MORNING STAR ZIG 1Z**  
MORNING STAR SWEET PEA 1U

### SEMEN INC Breaking News 63F (2 Straws)

UNEEDA ZAPPER 13Z  
**CAJA ZEPPELIN 1B**  
NOTTA 60W PHOTO-FINISH 1Z

RAVEN MEADOWS MAGNUM 10N  
**UPTO SPECS WILLA 17W**  
UPTO SPECS RAE 2R

### SEMEN Spots 'n Sprouts Dusty 124D (2 Straws)

STAR BANK LACERTA 68L  
**NOTTA 68L CUSTOM CHROME 106Y**  
STAR BANK 54R

STYALS LIGHTNING LADD 14P  
**SPOTS 'N SPROUTS 15W**  
LAKEVIEW NOELLA 1N

### SEMEN INC Talladega 11J (2 Straws)

CODIAK OH MY GOSH GNK 60A  
**OUTBACK JOEY 25D**  
RIVER HILL 54Z BELLA-JOY 25B

STAR BANK LACERTA 68L  
**SPOTS 'N SPROUTS 3R**  
SPOTS'N SPROUTS 5J

## 39B PACKAGE B

2 EMBRYOS, 3 SEMEN PACKAGES

### EMBRYO River Hill Traffic Jam 26T x Morning Star Zig 1Z

A & W JOEY 55P  
**RIVER HILL TRAFFIC JAM 26T**  
CALAMASUE 26R

LEGACY UNRIVALED 12U  
**MORNING STAR ZIG 1Z**  
MORNING STAR SWEET PEA 1U

### EMBRYO INC Goliath 747G x Star Bank Witches Brew 16W

RIVER HILL TRAFFIC JAM 26T  
**INC GOLIATH 747G**  
CODIAK GYPSY RAIN GNK 63B

NOTTA ROMEO 64R  
**STAR BANK WITCHES BREW 16W**  
STAR BANK 89S

### SEMEN INC Talladega 11J (2 Straws)

CODIAK OH MY GOSH GNK 60A  
**OUTBACK JOEY 25D**  
RIVER HILL 54Z BELLA-JOY 25B

STAR BANK LACERTA 68L  
**SPOTS 'N SPROUTS 3R**  
SPOTS'N SPROUTS 5J

### SEMEN CAJA Zeppelin 1B (2 Straws)

UNEEDA WALTER 21W  
**UNEEDA ZAPPER 13Z**  
MISTY FRITZ OF P.A.R. 13M

RIVER HILL 26T WALKER 60W  
**NOTTA 60W PHOTO-FINISH 1Z**  
NOTTA PHO-FINISH 54P

### SEMEN MC Speckle Park 300X 64L 1524C

STYALS LIGHTNING LADD 14P  
**SPOTS 'N SPROUTS STANDS ALONE**  
SPOTS 'N SPROUTS 2R

HWY 4 SPECKLE PARK 2H  
**CODIAK SILVER FOX RKW 64L**  
CODIAK HILLARY 81H

## 39C PACKAGE C

2 EMBRYOS, 3 SEMEN PACKAGES

### EMBRYO Premier 101Y Logic L11 x Codiak Britany GNK 40B

SIX STAR 82U ROYAL FLESH 101Y  
**PREMIER 101Y LOGIC L11**  
SPKNZ H2

CODIAK TRUMP GNK 20T  
**CODIAK BRITANEY GNK 40B**  
CODIAK UTAH 23U

### EMBRYO Wolf Lake Field Ready 52F x Spots 'n Sprouts 31A

RIVER HILL 26T YAGER 99Y  
**WOLF LAKE FIELD READY 52F**  
NOTTA PHO-FINISH 54P

SPOTS 'N SPROUTS WAMPUM 102W  
**SPOTS 'N SPROUTS 31A**  
SPOTS 'N SPROUTS 12S

### SEMEN INC Talladega 11J (2 Straws)

CODIAK OH MY GOSH GNK 60A  
**OUTBACK JOEY 25D**  
RIVER HILL 54Z BELLA-JOY 25B

STAR BANK LACERTA 68L  
**SPOTS 'N SPROUTS 3R**  
SPOTS'N SPROUTS 5J

### SEMEN CAJA Zeppelin 1B (2 Straws)

UNEEDA WALTER 21W  
**UNEEDA ZAPPER 13Z**  
MISTY FRITZ OF P.A.R. 13M

RIVER HILL 26T WALKER 60W  
**NOTTA 60W PHOTO-FINISH 1Z**  
NOTTA PHO-FINISH 54P

### SEMEN MC Speckle Park 300X 64L 1524C (2 Straws)

STYALS LIGHTNING LADD 14P  
**SPOTS 'N SPROUTS STANDS ALONE**  
SPOTS 'N SPROUTS 2R

HWY 4 SPECKLE PARK 2H  
**CODIAK SILVER FOX RKW 64L**  
CODIAK HILLARY 81H

## 39D PACKAGE D

2 EMBRYOS, 3 SEMEN PACKAGES

### EMBRYO Premier 101Y Logic L11 x Star Bank Witches Brew 16W

SIX STAR 82U ROYAL FLESH 101Y  
**PREMIER 101Y LOGIC L11**  
SPKNZ H2

NOTTA ROMEO 64R  
**STAR BANK WITCHES BREW 16W**  
STAR BANK 89S

### EMBRYO P.A.R. Moo Fassa 03M x Pura Vida Calista 64C

P.A.R. KING PIN 1K  
**P.A.R. MOO FASSA 03M**  
ASPEN ACRES 3A

RAVENWORTH HORIZON 103A  
**PURA VIDA CALISTA 64C**  
PURA VIDA XANADU 22X

### SEMEN INC Breaking News 63F (2 Straws)

UNEEDA ZAPPER 13Z  
**CAJA ZEPPELIN 1B**  
NOTTA 60W PHOTO-FINISH 1Z

RAVEN MEADOWS MAGNUM 10N  
**UPTO SPECS WILLA 17W**  
UPTO SPECS RAE 2R

### SEMEN River Hill 5C Farr-Out 827F (2 Straws)

CODIAK PUTNAM GNK 61Y  
**CODIAK CAPITAINE GNK 5C**  
CODIAK COUGAR GNK 54R

CODIAK CRIKEY GNK 13U  
**PURA VIDA YORBALINDA 25Y**  
PURA VIDA FRANCESCA 2T

### SEMEN Parkvale Mark (2 Straws)

STYALS LIGHTNING LADD 14P  
**SPOTS 'N SPROUTS STANDS ALONE**  
SPOTS 'N SPROUTS 2R

SPKNZ EXTREME E27  
**PARKVALE HARRIET**  
SPKNZ E42

## 39E PACKAGE E

2 EMBRYOS, 3 SEMEN PACKAGES

### EMBRYO P.A.R. Moo Fassa 03M x Star Bank Witches Brew 16W

P.A.R. KING PIN 1K  
**P.A.R. MOO FASSA 03M**  
ASPEN ACRES 3A

NOTTA ROMEO 64R  
**STAR BANK WITCHES BREW 16W**  
STAR BANK 89S

### TYPE D.A.M. Dots 94A Electric 31E x Pura Vida Conchita 67C

RIVER HILL 12X A'MAN 94A  
**D.A.M. DOTS 94A ELECTRIC 31E**  
NOTTA 68L LIGHTNING LADY 31X

RAVENWORTH HORIZON 103A  
**PURA VIDA CONCHITA 67C**  
PURA VIDA ZAVIERA 34Z

### SEMEN INC Six Gun 428F (2 Straws)

UNEEDA ZAPPER 13Z  
**CAJA ZEPPELIN 1B**  
NOTTA 60W PHOTO-FINISH 1Z

RAVEN MEADOWS MAGNUM 10N  
**UPTO SPECS WILLA 17W**  
TO SPECS RAE 2R

### SEMEN MC Speckle Park 300X 64L 1524C (2 Straws)

STYALS LIGHTNING LADD 14P  
**SPOTS 'N SPROUTS STANDS ALONE**  
SPOTS 'N SPROUTS 2R

HWY 4 SPECKLE PARK 2H  
**CODIAK SILVER FOX RKW 64L**  
CODIAK HILLARY 81H

### SEMEN Parkvale Kiwi K1 (2 Straws)

BELMORAL'S SPECIAL 99H  
**A & W 15R**  
TRIPLE A GEM 15G

SAGE LAD 2L  
**ROB 'N SON'S FARMS 6R**  
STYALS CASPER 1K

# SEMEN OPPORTUNITY

## 40

## MATAKANA RUSH HOUR

MAT R11 14/8/2020

Polled  
PP  
Coat Colour  
ED/ED  
Myostatin  
NT821F

MAUNGAHINA KING OF KINGS <b>MAUNGAHINA MAXIMUS</b> SPKNZ E36	MAINSTREAM ELDORADO E11 SPKNZ SPN F1 PRAIRIE HILL JOHN WAYNE 50S CODIAK PRAIRIE FIRE RKW 05J HWY. 4 SPECKLE PARK 2H SPOTS 'N SPROUTS 3K SPKNZ EXTREME E27 SPKNZ E42
MAINSTREAM ELDORADO E11 <b>MATAKANA NORAH</b> MAUNGAHINA J36	

### OFFERING 4 LOTS OF 5 STRAWS

**40A** 1 PACKAGE OF 5 STRAWS

**40B** 1 PACKAGE OF 5 STRAWS

**40C** 1 PACKAGE OF 5 STRAWS

**40D** 1 PACKAGE OF 5 STRAWS

#### Qualified for North America.

This bull from New Zealand caught our eye when we first saw his calf pictures. Incredible length, thickness, and an outcross pedigree that was unique to anything we'd seen before. Rush Hour's calves have exceeded every one of our expectations. His second calf crop has hit the ground running at HSF, and we couldn't be happier!

**This is the last Rush Hour semen to be sold for the remainder of 2025.**



**SIRE** Maungahina Maximus



**DAM** Matakana Norah



**Daughter** Highmark Melissa 6M



**Son** Highmark Montezuma 21M









# Terms & Conditions

**TERMS:** The terms of the sale are cash or cheque, payable at par at the sale location. The right of property shall not pass until after settlement has been made; no invoicing on buyers in attendance unless previous arrangements have been made. Every animal sells to the highest bidder and in cases of disputes, the auctioneer's decision will be final. Announcements from the auction block will take precedence over the printed matter in the catalogue. Current exchange rates will be announced sale day. All monies are in Canadian funds.

**CERTIFICATE OF REGISTRATIONS:** Each purebred animal will carry papers issued by the Canadian Speckle Park Association. A certificate of registry duly transferred will be furnished to the buyer for each animal after payment has been made.

**PEDIGREE ESTIMATES:** Pedigree Estimates (PE) are created on the projected mating of the animal's sire and dam based on averages of the two, creating estimated values that do not hold the same accuracy of actual EPDs issued from the association and should be used as such.

**HEALTH:** All animals in the sale have met all necessary health requirements.

**GUARANTEE:** All sellers and buyers of Speckle Park cattle in this sale are expected to be knowledgeable of and to abide by the Guidelines for Seller and Buyer Expectations and the By-laws of the Canadian Speckle Park Association. These documents are available from the Association's office.

**PREGNANCY INFORMATION:** All serviceable age females have been pregnancy examined by an accredited veterinarian, giving an estimated length of gestation. This estimated gestation

period shall be used only as a guideline to calving and is not a guarantee of actual service.  
**LIABILITIES:** All persons attend the sale at their own risk. The seller, facility owner and sale manager assume no liability legal or otherwise, for any accidents that occur. It is understood that T Bar C Cattle Co. (2013) Ltd. is acting only as a medium between buyer and seller and is not responsible for any failure on the part of either party to live up to his obligations. Neither does T Bar C Cattle Co. (2013) Ltd. assume any financial obligations to collect or enforce collection of any monies between parties and any legal action that may in exceptional cases be taken must be between the buyer and the seller. T Bar C Cattle Co. (2013) Ltd. assumes no responsibility for any credit extended by the seller to the buyer. The buyer must look to the seller for fulfillment of all guarantees and representations made hereunder.

**DELIVERY:** Every assistance will be given in getting your purchases home. Each animal becomes the risk of the purchaser as soon as sold. Buyers are responsible for all costs involved with shipping of semen and embryos.

**PHONE, MAIL, WIRE BIDS:** Bidders unable to attend the sale may phone, wire or mail their bids and instructions to the sale manager, auctioneer or special representatives. Bids must be received in sufficient time prior to the sale.

**INSURANCE:** We strongly recommend that insurance is purchased for full value.

**ERRORS:** All announcements at sale time, written or oral, supersede any written material in the catalogue.

## Interpretation of Q Select Genotypes

<b>Leptin Genotype</b>	<b>CC</b>	<b>CT</b>	<b>TT</b>	➔	Increasing genetic potential related to fat accumulation, milk production, cow longevity, weaning weight, carcass composition.
<b>PMCH Genotype</b>	<b>TT</b>	<b>AT</b>	<b>AA</b>	➔	Increasing genetic potential related to fat deposition, tenderness, marbling, backfat.
<b>IGF2 Genotype</b>	<b>TT</b>	<b>CT</b>	<b>CC</b>	➔	Increasing genetic potential related to lean growth, rib eye area.
<b>CRH Genotype</b>	<b>CC</b>	<b>CG</b>	<b>GG</b>	➔	Increasing genetic potential related to stress, response, hot carcass weight, rib eye area, docility.

### Legend:

<b>HH</b>	Homozygous Horned
<b>HP</b>	Heterozygous Polled
<b>PP</b>	Homozygous Polled

### Legend for Coat Colour

<b>ED</b>	Allele for Black Colour
<b>E+</b>	Allele is "neutral"
<b>e</b>	Allele for red color (recessive)

**Return Undeliverable  
Canadian Addresses to:**

T Bar C Cattle Co. Ltd.  
Box 2330  
Warman, SK  
S0K 4S0



Created By:



**Directions to Highmark Stock Farms**

4 KMs North of Hague, turn West on Lesser Rd, cross the tracks, and immediately turn North. Proceed for 3/4 KMs to the sale site on the right side.

