



MATERNAL MOVEMENT AT MEADOWBRIDGE

DECEMBER 28-29, 2023 | DLMS FARMGATE

JOIN US AT THE FARM ON DECEMBER 29 FOR AN OPEN HOUSE

Brisket and refreshments will be served from 1 to 6 PM

Welcome to the “Maternal Movement at Meadow Bridge” online sale. We are passionate about the Angus cow and 2023 marked our 10th calf crop. Our focus is on performance and maternal traits. As you browse our catalogue, we hope you pick up on the intentionality of our program. You will find rock solid females with extreme breeding potential as well as our two best Herd Bulls on choice!

The cattle business is really about people and with that in mind we have a few guest consignments. If you’re looking for a donor female a cutting-edge herd bull, bred & open heifers as well as elite frozen genetics we have you covered. We take the responsibility to those who have chosen our genetics with the utmost gravity and will be there for you long after the sale.

In closing, there are many people who help us throughout the year. We thank you all, and especially the day to day work of our great friend Gary Loney, and the whole crew at T Bar C.

We would also like to reach out to our out of province friends and offer a capped trucking rate of \$300/head to any central point in the country. All USA testing/border transfers and health papers will be supplied free of charge.

This is your personal invitation to join us from 1-6 Dec 29 for a day of Angus cattle, food and fellowship.

- JJ DESLIPPE



FROM THE DESK AT T BAR C

Such a fitting sale name of a progressive outfit that has become nationally recognized and known for superior angus genetics. JJ and Katie's drive for maternal excellence is obvious when you visit their gorgeous farm near St. Mary's , Ontario where you'll witness cow families "stacked" upon cow families that has really made the Meadowbridge program a mark on the map. Included in this sale are a key group of consignors that have the same vision as JJ & Katie do and I think such a fine example how the Meadowbridge program insures customer success. The offering is loaded with potential whether it be frozen or live that trips your trigger and please look over the bull calves on offer, they are salty! Please join us and view the offering in person and take in the Falls-view sale the next night just a mere 30 -40 mins away from Meadowbridge. The time is now to upgrade into genetics such as the Maternal Movement to flourish in this ever popular cattle market. Please don't hesitate to contact any of us at T Bar for any questions or handling of bids you may need.

- BEN WRIGHT



MATERNAL MOVEMENT

AT MEADOWBRIDGE

Sale opens December 28

Closes December 29

SALE DAY CONTACTS:

Chris Poley	306-220-5006
Ben Wright	519-374-3335
Shane Michelson	403-363-9973
Levi Rimke	204-851-4515
JJ Deslippe	519-275-1739
Katie Deslippe	519-274-3882
Jimmy Joe Henderson	403-740-9270



Google maps address to find the farm: 922580 Road 92, Zorra, ON

HOW TO BID:

1. Visit <https://farmgatetimeductions.ca>, click the LOGIN/REGISTRATION button. First time users will select the REGISTER button from this page. Fill out the registration form to sign up for a free user account. It allows you to select a username and password for use on all Farm Gate Timed auctions. This program will send you text and email messages whenever there is activity on your favorite lots, or someone challenges your proxy bid. This is why you will be asked for both your current email and cell phone number. If you are a past participant in the Farm Gate Timed auctions, simply enter your username and password to continue. This takes you to a list of both current and upcoming Farm Gate Auctions. Select the MATERNAL MOVEMENT AT MEADOWBRIDGE SALE. 2. You can choose your favourite lots in the sale at this time. The program will allow you to open either all sale lots, or just your favorite lots on your screen. Any time there is active bidding on a lot you have identified on your favorite list, you will get a text and/ or an email noting this activity. 3. The program allows you to place a proxy bid on any sale lot. This protects your interest in any lot of interest for you to a specified dollar value you set, when you may not be able to give 100% attention to the sale. If the lot has a \$2000 bid on it and you place a proxy bid of \$3500 into the system, the computer will bid \$2100 for you. But if some one else bids \$2200, the computer will again bid for you, this time at \$2300. The system will look after your interest to a maximum of \$3500. If another bidder is on at \$3600, your proxy will no longer be effective and you will no longer have the winning bid on this lot without once again logging in and bidding again, or moving your attention to a second lot of interest. 4. At closing time of the sale, the entire sale will extend bidding for 5 minutes if a bid is placed on any lot in the sale. Any bid received after 6 PM will extend the sale by 5 minutes, from the time of that bid. When no bidding occurs for 5 minutes, the computer will declare the sale finished. 5. Within 24 hours of the sale close, the sale consignor will contact all winning bidders to arrange payment, transfer of pedigrees and delivery/pick up of your lot. If you require assistance with using the new DLMS Farm Gate web site, if you don't understand how to create a favorites list or proxy bid, or you just plain want to bid via phone, please talk to any of the DLMS team.



Timed Auctions Made Easy
Mark Shologan 780-699-5082
Sale Tech Support 780-991-3025



CHRIS POLEY
306-220-5006



BEN WRIGHT
519-374-3335



SHANE MICHELSON
403-363-9973



LEVI RIMKE
204-851-4515



1

MBA **BLACKCAP MAY** 026

REG 2139534 **TATTOO** MBA 026H **DOB** 15/03/2020

<p>COLEMAN CHARLO 0256</p> <p>S A V RAINDANCE 6848</p> <p>S A V BLACKCAP MAY 4136</p> <p>S A V INTERNATIONAL 2020</p> <p>SIEBRING BLACKCAP MAY 631</p> <p>S A V BLACKCAP MAY 273</p>	<p>O C C PAXTON 730P</p> <p>BOHI ABIGALE 6014</p> <p>S A V 8180 TRAVELER 004</p> <p>S A V MAY 2397</p> <p>S A V HARVESTOR 0338</p> <p>S A V EMBLYNETTE 5483</p> <p>S A V 707 RITO 9969</p> <p>S A V MAY 2397</p>
---	--

CE 7.0
BW 2.3
WW 65
YW 120
MCE 0.0
MILK 27

- Magnificent maternal value from the Blackcap May family
 - Jaw dropping female that produced our best heifer calf in 2023
 - Dam was AAC sale topper in 2020 to Heathcote Angus @ \$29,000
 - 2dam is one of Canadas most elite donors & sister to breed legend Blackcap May 4136
 - 026 has exquisite phenotype a beautiful udder & an elegant front end
 - This female will elevate any program
- AI bred to S A V Bloodline 9578 on June 30.**



SIEBRING BLACKCAP MAY 631



S A V BLACKCAP MAY 273



S A V BLOODLINE 9578



1A

MBA **BLACKCAP MAY 331**
REG 2306879 TATTOO MBA 331L DOB 11/02/2023

LD CAPITALIST 316
S A V EARLY ARRIVAL 0903
S A V BLACKCAP MAY 3525

S A V RAINDANCE 6848
MBA BLACKCAP MAY 026
SIEBRING BLACKCAP MAY 631

CONNEALY CAPITALIST 028
LD DIXIE ERICA 2053
S A V FINAL ANSWER 0035
S A V MAY 2397
COLEMAN CHARLO 0256
S A V BLACKCAP MAY 4136
S A V INTERNATIONAL 2020
S A V BLACKCAP MAY 273

CE 6.0 BW 1.7 WW 69 YW 116 MCE 4.0 MILK 24

- The most powerful heifer calf ever produced at Meadow Bridge Angus
- Deep sided & attractive
- Predictable productivity & maternal potency
- Intensely linebred to the maternal matriarch Blackcap May 2397





2

MBA **BLACKCAP MAY 138**

REG 2235956 TATTOO MBA 138J DOB 19/03/2021

COLEMAN CHARLO 0256
S A V RAINDANCE 6848
 S A V BLACKCAP MAY 4136

S A V INTERNATIONAL 2020
SIEBRING BLACKCAP MAY 631
 S A V BLACKCAP MAY 273

O C C PAXTON 730P
 BOHI ABIGALE 6014
 S A V 8180 TRAVELER 004
 S A V MAY 2397
 S A V HARVESTOR 0338
 S A V EMBLYNETTE 5483
 S A V 707 RITO 9969
 S A V MAY 2397

CE 6.0 BW 3.9 WW 71 YW 118 MCE 5.0 MILK 26

- Front pasture flush full sister to Lot 1 stunning from every angle
 - Rib shape & striking maternal quality the kind that will rise to the top of the herd
 - Perfect footed wide in her pins & a great EPD profile
- AI bred to S A V Early Arrival 0903 on May 22.**



\$300,000 SISTER TO DAM



3

MBA **BLACKCAP MAY 236**

REG 2255622 **TATTOO** MBA 236K **DOB** 01/01/2022

COLEMAN CHARLO 0256

S A V PRESIDENT 6847

S A V BLACKCAP MAY 4136

S A V CUTTING EDGE 4857

SIEBRING BLACKCAP MAY 733

S A V BLACKCAP MAY 273

O C C PAXTON 730P

BOHI ABIGALE 6014

S A V 8180 TRAVELER 004

S A V MAY 2397

S A V HARVESTOR 0338

S A V BLACKCAP MAY 5530

S A V 707 RITO 9969

S A V MAY 2397

CE -1.0 **BW** 5.0 **WW** 73 **YW** 128 **MCE** 0.0 **MILK** 32

- Powerful daughter of SAV President 6847 loaded with depth & fleshing ability
- Sharp fronted with an outstanding presence top 4% weaning & yearling top 3% milk
- Produced by Blackcap May 733 a Cutting Edge sister to the dam of Lot 1 & 3
- We feel this heifer is the sleeper of our entire offering

AI bred to S A V Early Arrival 0903 on June 26.



DAM AND FIRST BULL CALF



4

MBA **BLACKCAP MAY 243**

REG 2293552 **TATTOO** MBA 243K **DOB** 29/01/2022

S A V HARVESTOR 0338
S A V CUTTING EDGE 4857
 S A V BLACKCAP MAY 5530

S A V SENSATION 5615
PVA BLACKCAP MAY 8297
 PVA BLACKCAP MAY 4397

S A V HERITAGE 6295
 S A V EMBLYNETTE 7749
 B C C BUSHWACKER 41-93
 S A V MAY 7238
 S A V REGISTRY 2831
 S A V BLACKCAP MAY 4136
 S A V INTERNATIONAL 2020
 S A V MAY 2397

CE -2.0 **BW** 4.4 **WW** 63 **YW** 112 **MCE** 3.0 **MILK** 20

- This heifer is a rockstar clean fronted very pretty with a deep rib
- Sound as they come
- Blackcap May females are cherished to all who own them
- Her dams sister 7497 is having a huge impact in our program and is arguably the Maternal Centerpiece at Meadow Bridge
- The second dam 4397 is in the donor program at ZWT and Montana Ranch

AI bred to S A V Early Arrival 0903 on June 16.



MAT SISTER TO DAM



5

SUNNYVIEW **BLACKCAP MAY 301L**

REG 2343545 **TATTOO** TTM 301L **DOB** 05/03/2023

S A V AMERICA 8018
S A V AMERICAN MADE 0079
 S A V EMBLYNETTE 3293

S A V ANGUS VALLEY 1867
NORTH PERTH BLACKCAP MAY 413
 CHAMPION HILL MAY 7119

S A V PRESIDENT 6847
 S A V MADAME PRIDE 0075
 S A V 004 DENSITY 4336
 S A V EMBLYNETTE 7411
 S A V IRON MOUNTAIN 8066
 S A V MAY 2397
 S A V NET WORTH 4200
 S A V MAY 7238

CE -2.5 **BW** 3.8 **WW** 59 **YW** 101 **MCE** 1.0 **MILK** 20

- One of the first to sell from our herd sire SAV American Made 0079
- Blackcap May 301L is a thick big bodied easy fleshing heifer all in a moderate package
- Her dam is a massive ribbed cow with an impeccable udder
- Her sires dam SAV Emblynette 3293 is one of Density's greatest daughters & her maternal grandam by Net Worth is a sister to the immortal Density
- This calf sets the standard for proven & prolific maternal productivity

Consigned by Sunnyview Angus



BLACKCAP MAY 413



6

MBA TROJAN ERICA 022

REG 2139530 TATTOO MBA 022H DOB 18/02/2020

S A V HARVESTOR 0338
S A V CUTTING EDGE 4857
 S A V BLACKCAP MAY 5530

S A V NET WORTH 4200
MBA TROJAN ERICA 610
 NORTH PERTH TROJAN ERICA 309

S A V HERITAGE 6295
 S A V EMBLYNETTE 7749
 B C C BUSHWACKER 41-93
 S A V MAY 7238
 S A V 8180 TRAVELER 004
 S A V MAY 2410
 S A V IRON MOUNTAIN 8066
 NORTH PERTH TROJAN ERICA 31U

CE 1.0 BW 4.8 WW 60 YW 105 MCE 6.0 MILK 24

- A powerful three year old female by SAV Cutting Edge back to our featured Trojan Erica 309
- Her dam by Net Worth was a high seller in 2020 AAC
- This exceptional female has a beautiful udder with tremendous mass & power her calf lot 6A is a testament to her breeding & earning potential

AI bred to sexed female S A V Territory 7225 on July 3.



MBA TROJAN ERICA 610



TROJAN ERICA 309



6A

MBA TROJAN ERICA 312

REG 2296106	TATTOO MBA 312K	DOB 06/12/2022
COLEMAN CHARLO 0256	O C C PAXTON 730P	
S A V RAINDANCE 6848	BOHI ABIGALE 6014	
S A V BLACKCAP MAY 4136	S A V 8180 TRAVELER 004	
	S A V MAY 2397	
S A V CUTTING EDGE 4857	S A V HARVESTOR 0338	
MBA TROJAN ERICA 022	S A V BLACKCAP MAY 5530	
MBA TROJAN ERICA 610	S A V NET WORTH 4200	
	NORTH PERTH TROJAN ERICA 309	

CE 11.0 BW 0.4 WW 49 YW 97 MCE 11.0 MILK 22

- A front pasture presence gorgeous in her design with added substance
- Sired by Raindance out of a Cutting Edge momma and Net worth grandma 312 is bred for massive dimension and is an easy find in the pen





7A

THREE EMBRYOS

S A V AMERICA 8018 X MBA TROJAN ERICA 908

S A V PRESIDENT 6847
S A V AMERICA 8018
 S A V MADAME PRIDE 0075

BASIN PAYWEIGHT 1682
MBA TROJAN ERICA 908
 NORTH PERTH TROJAN ERICA 309

COLEMAN CHARLO 0256
 S A V BLACKCAP MAY 4136
 S A F 598 BANDO 5175
 S A V MADAME PRIDE 8264
 BASIN PAYWEIGHT 006S
 21AR O LASS 7017
 S A V IRON MOUNTAIN 8066
 NORTH PERTH TROJAN ERICA 31U

PE CE 4.0 BW 2.8 WW 67 YW 115 MCE 5.0 MILK 16

7B

THREE EMBRYOS

CONNEALY CRAFTSMAN X MBA TROJAN ERICA 908

SITZ RESILIENT 10208
CONNEALY CRAFTSMAN
 BLACK CATHY OF CONANGA 8521

BASIN PAYWEIGHT 1682
MBA TROJAN ERICA 908
 NORTH PERTH TROJAN ERICA 309

SITZ STELLAR 726D
 SITZ MISS BURGESS 1856
 CONNEALY NIOBRARA 5451
 BLACK CARLA OF CONANGA 450
 BASIN PAYWEIGHT 006S
 21AR O LASS 7017
 S A V IRON MOUNTAIN 8066
 NORTH PERTH TROJAN ERICA 31U

PE CE 8.5 BW 1.3 WW 67 YW 116 MCE 9.5 MILK 31

Embryos stored are stored at Kirkton Vet Clinic,
 St. Mary's, ON. Consigned by Smith Creek
 Angus, Conrad Erb.





8

MBA LUCY 235

REG 2255614 TATTOO MBA 235J DOB 07/12/2021

S A V RESOURCE 1441
S A V TERRITORY 7225
 S A V EMBLYNETTE 3293

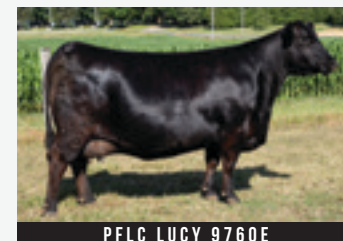
S A V RENOWN 3439
PFLC LUCY 9760E
 SMR LUCY 9760

RITO 707 OF IDEAL 3407 7075
 S A V BLACKCAP MAY 4136
 S A V 004 DENSITY 4336
 S A V EMBLYNETTE 7411
 RITO 707 OF IDEAL 3407 7075
 S A V BLACKCAP MAY 4136
 BC 7022 RAVEN 7965
 CHAMPION HILL LUCY 3053

CE 1.0 BW 2.5 WW 85 YW 148 MCE 4.0 MILK 24

- I can't say enough about Lucy 235 mass muscle & rib shape. Her high quality phenotype is hard to find we invite you to visit & study her conformation she has perfect proportions
- Her sister Lucy 016 was sold for \$8000 to Tyler Raddatz in the 22 AAC
- Her Renown dam PFLC Lucy 9760 is a foundation cow in our program the 2nd dam is a BC Matrix & the 3rd dam in the well known Champion Hill Lucy a full sister to breed legend SAV Final Answer!

AI bred to S A V Ease 0840 on May 4.



PFLC LUCY 9760E



9

MBA LADY 246

REG 2309672 TATTOO MBA 246K DOB 14/02/2022

BALDRIDGE COLONEL C251
MOHNEN GENERAL 548
 S A V MADAME PRIDE 5290

S A V RENOWN 3439
JL LADY 9042
 JL LADY 3059

BALDRIDGE XPAND X743
 BALDRIDGE ISABEL Y69
 S A V 8180 TRAVELER 004
 S A V MADAME PRIDE 0075
 RITO 707 OF IDEAL 3407 7075
 S A V BLACKCAP MAY 4136
 S A V FOUR SEASONS 5231
 LADY OF PEAK DOT 779L

CE 0.0 BW 3.0 WW 59 YW 97 MCE -2.0 MILK 25

- A thick deep bodied heifer that just keeps adding dimension she has a beautiful head is stout made, good footed & udder promise looks A+++
- Her dam & grandam started off the historic JL dispersal & trace back to 779L the original start of Johnson Livestock Lady 3059 sold for \$32,500 to Rehorst Farms
- Her sire is none other than Mohnen General who is making a name for himself in the LLB bull battery & producing the \$80,000 Bandura Miss 4382 Lady May 54J

AI bred to S A V Rainfall 6846 on April 21.



JL LADY 3059



10

MBA LITCHFEILD 325

REG 2307886 TATTOO MBA 325L DOB 23/01/2023

S A V RAINFALL 6846
S A V BLOODLINE 9578
 S A V EMBLYNETTE 2369

S A V BISMARCK 5682
MBA TROJAN ERICA 910
 NORTH PERTH TROJAN ERICA 707

COLEMAN CHARLO 0256
 S A V BLACKCAP MAY 4136
 S A V 707 RITO 9969
 S A V EMBLYNETTE 7566
 G A R GRID MAKER
 S A V ABIGALE 0451
 S A V REGARD 4863
 NORTH PERTH TROJAN ERICA 311U

CE -6.0 BW 5.4 WW 68 YW 123 MCE 5.0 MILK 26

MBA 325 has been a standout since calfhood he is a 3 dimensional powerhouse packed with muscle & masculinity combined with flawless feet. His dam by Bismarck is one of 7 Trojan Erica sisters from 707 our high selling cow in this yrs AAC at \$32,500 to Bucksnot Ranch. His full sister Trojan Erica 219 ranks in the top 1% of breed for weaning & yearling...this bull is a high caliber herdsire prospect!

SELLS ON CHOICE



MBA TROJAN ERICA 910



NORTH PERTH TROJAN ERICA 707



10A

MBA LEROY VAN DYK 311

REG 2307884 TATTOO MBA 311 DOB 29/11/2022

S A V RAINFALL 6846
S A V BLOODLINE 9578
 S A V EMBLYNETTE 2369

S A V SEEDSTOCK 483
PVA BLACKCAP MAY 7497
 PVA BLACKCAP MAY 4397

COLEMAN CHARLO 0256
 S A V BLACKCAP MAY 4136
 S A V 707 RITO 9969
 S A V EMBLYNETTE 7566
 S A V REGISTRY 2831
 S A V BLACKCAP MAY 4136
 S A V INTERNATIONAL 2020
 S A V MAY 2397

CE -6.0 BW 2.9 WW 63 YW 107 MCE 3.5 MILK 18

MBA 311 is the herdbull kind with added length of body, big rib shape and travels on great feet. His proven & productive dam is a pillar at Meadow Bridge with 3 daughters in production the 2nd dam was the Lot 1 female in the ZWT 2022 sale going to Montana Ranch & a sister to breed legend Blackcap May 4136 an unequalled maternal heritage!

SELLS ON CHOICE



PVA BLACKCAP MAY 7497

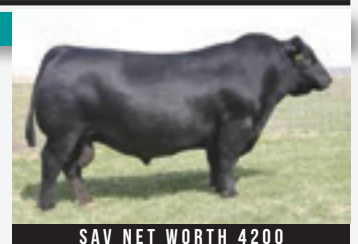


11

PICK OF THE **BANDURA MISS 4382 LADY MAY 54J X S A V NET WORTH** PREGNANCIES

CALVES DUE ON DECEMBER 23, 2023, PICK TO BE MADE WHEN CALVES ARE WEANED

- Lady May 54J has been on a tear being regarded as one of the most promising young donors in the breed
- Networth has done the full circle being known for exceptional thickness and highly sought after progeny with semen being very hard to obtain
- We have 2 pregnancies awaiting come the end of this year, as an added bonus we are offering you to pick which one you like the most come weaning time this fall.
- Truly a sacred genetic combination of angus cattle that will lead you to the forefront
- Terms: half down sale day and half due upon choice



SAV NET WORTH 4200



12

PREGNANT RECIPIENT

CONNEALY CRAFTSMAN X YOUNG DALE GRACE 169B

SITZ RESILIENT 10208
CONNEALY CRAFTSMAN
 BLACK CATHY OF CONANGA 8521

PF HOOVER DAM 041
YOUNG DALE GRACE 169B
 YOUNG DALE GRACE 107W

SITZ STELLAR 726D
 SITZ MISS BURGESS 1856
 CONNEALY NIOBRARA 5451
 BLACK CARLA OF CONANGA 450
 HOOVER DAM
 P F QUEEN MOTHER 446
 YOUNG DALE PANARAMA 66T
 YOUNG DALE GRACE 14P

PE CE 7.5 BW 1.0 WW 58 YW 101 MCE 6.0 MILK 36

Maternal prowess meets astonishing end carcass and paper value! To own direct offspring of Young Dale Grace 169B and the \$500,000 Nebraska Sandhills sensation, Connealy Craftsman, defines great opportunity. Grace 169B is producing well for us and our partners at Trans Ova Colorado and requires little introduction to Canadian and many American breeders. She is a phenotypic lock, a show winner, delivers the maternal in every daughter we have lactating, milks extremely heavily all the while maintaining excellent udder confirmation and soundness. She is beyond \$250,000 in production returns and is continuing to produce well. She has daughters working as donors mirroring her production and is the most thoroughly saturated denominator of our success. Craftsman individually is an elite combination of paper tabulations, carcass evaluation, phenotype and soundness. Regardless of the resulting calf's sex there will certainly be marketing opportunities. The recip cow herself is a non-papered Black Angus cow, comes from 'Big Country' Colorado and will undoubtedly be able to raise a calf successfully. **Jaymarandy Livestock is guaranteeing a live calf to 24 hours old. 50% is owing on sale day with the remainder due when calf is 24 hours old. Recip is FOB Beausejour MB.** Consigned by Jaymarandy Livestock



CONNEALY CRAFTSMAN



DAUGHTER



GRANDSON



13

MBA PURE PRIDE 347

REG 2337762 TATTOO MBA 347L DOB 31/01/2023

RITO 707 OF IDEAL 3407 7075
S A V RESOURCE 1441
 S A V BLACKCAP MAY 4136

CONNEALY FINAL SOLUTION 9449
PFLC PURE PRIDE 16B
 WHITESTONE PURE PRIDE Z182

R R RITO 707
 IDEAL 3407 OF 1418 076
 S A V 8180 TRAVELER 004
 S A V MAY 2397
 CONNEALY ANSWER 71
 ESTE OF CONANGA 364
 LEACHMAN RIGHT TIME
 TROWBRIDGE PURE PRIDE 610

CE 4.0 BW 2.0 WW 59 YW 107 MCE 4.0 MILK 27

- an elegant Pure Pride female with exquisite femininity & maternal presence
- her dam Pure Pride 16B was a \$10,000 seller in the 22 AAC to Floyd Albrecht
- her dam sister Pure Pride 16D was \$15,000 seller in the 23 AAC to Sunnyview Angus
- sired by the timeless Resource 347 completes 6 generations of pathfinder sires back to an EXT



PFLC PURE PRIDE 16B



PFLC PURE PRIDE 16D



14

ALBRECHT ALLEGRA 301L

REG APPLIED FOR TATTOO FGA 301L DOB 06/01/2023

S A V PRESIDENT 6847
S A V AMERICA 8018
 S A V MADAME PRIDE 0075

SAC CONVERSATION
GILLCO ALLEGRA 2E
 GILLCO ALLEGRA 2B

COLEMAN CHARLO 0256
 S A V BLACKCAP MAY 4136
 S A F 598 BANDO 5175
 S A V MADAME PRIDE 8264
 SILVEIRAS CONVERSION 8064
 LAFLINS FARRAH 0250
 S A V NET WORTH 4200
 GILLCO ALLEGRA 5T

PE CE 0.0 BW 4.1 WW 66 YW 115 MCE 2.5 MILK 19

- This royally bred sweetheart comes right off the top replacement pen from the good people at Albrect
- The famous Gillco Allegra cow family has garnered national recognition
- This young futuristic female carries herself so well threw her center body with a tremendous look
- We feel this America daughter has a big upside to her out of really good cow that is now in Floyd's donor pen

Consigned by Floyd Albrect



GILLCO ALLEGRA 2E



15

PREGNANT RECIPIENT

ELLINGSON PROLIFIC X YOUNG DALE GRACE 126Z

ELLINGSON PROFOUND 8155
ELLINGSON PROLIFIC
 EA QUEEN 8070

YOUNG DALE PANARAMA 66T
YOUNG DALE GRACE 126Z
 YOUNG DALE GRACE 19T

S POWERPOINT WS 5503
 EA ROSETTA 6157
 KOUPAL JUNEAU 797
 EA QUEEN 2350
 S A V NET WORTH 4200
 YOUNG DALE POLLYANNA 22P
 BUFFALOS CONCLUSIVE BN46
 YOUNG DALE GRACE 1R

PE CE 4.5 BW 3.0 WW 72 YW 116 MCE 9.0 MILK 24

Embryo was implanted May 7, recip is located at Young Dale Angus.

15A

TWO PACKAGES OF THREE IVF EMBRYOS

ELLINGSON PROLIFIC X YOUNG DALE GRACE 126Z



\$55,000 1/2 INT SON



\$146,000 SON



DAUGHTER

15B**THREE PACKAGES OF THREE IVF EMBRYOS**

BLAIRS MARTIAL LAW 593E X YOUNG DALE GRACE 126Z

15C**TWO PACKAGES OF THREE EMBRYOS**

S A V STERLING 1766 X YOUNG DALE GRACE 126Z

15D**TWO PACKAGES OF THREE EMBRYOS**

SCHIEFELBEIN SHOWMAN 338 X YOUNG DALE GRACE 126Z

15E**TWO PACKAGES OF THREE EMBRYOS**

ELLINGSON TURN KEY 0170 X YOUNG DALE GRACE 126Z

15F**ONE PACKAGE OF THREE IVF EMBRYOS**

S A V BISMARCK 5682 X YOUNG DALE GRACE 126Z

15G**ONE PACKAGE OF THREE EMBRYOS**

COLEMAN RESOLVE 7219 X YOUNG DALE GRACE 126Z

15H**ONE PACKAGE OF THREE IVF EMBRYOS**

S A V AMERICA 8018 X YOUNG DALE GRACE 126Z

Grace 126Z is one of the premier dams within the Angus circles of the entire country. Course noted for being the famous dam of the \$146,000 Believe & the \$104,000 Defiance amongst many daughters retained in the Youngdale herd including their most valuable cow 58C. The extensive ET work 126Z has gone under is simply progressive. You can pick and choose on sires who we think are breed leading & will only be influential to a cow that has created a landscape as solid as any within our industry in some time. **Consigned by Young Dale Angus and Angus Valley**

NOTE: ALL EMBRYOS ARE STORED AT PEAK VETERINARY HEALTH



ELLINGSON PROLIFIC



BLAIRS MARTIAL LAW 593E



S A V STERLING 1766



SCHIEFELBEIN SHOWMAN 338



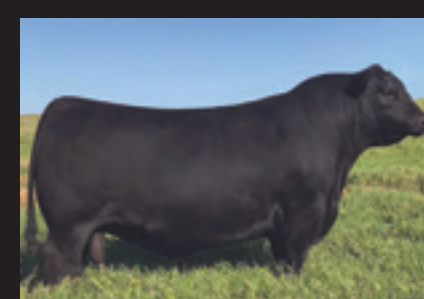
ELLINGSON TURN KEY 0170



S A V BISMARCK 5682



COLEMAN RESOLVE 7219



S A V AMERICA 8018



16

4 PACKS OF 5 UNITS

S A V RESOURCE 1441



17

4 PACKS OF 5 UNITS

S A V RENOWN 3439



18

4 PACKS OF 5 UNITS

SAV 004 DENSITY 4336



19

4 PACKS OF 5 UNITS

S A V RAINFALL 6846



20

4 PACKS OF 5 UNITS

SAV FINAL ANSWER 0035



21

4 PACKS OF 5 UNITS

SAV RENOVATION 6822



22

4 PACKS OF 5 SEXED FEMALE UNITS

MUSGRAVE 316 EXCLUSIVE



23

3 UNITS OF SEXED FEMALE SEMEN

S A V BISMARCK 5682

Brussels Livestock

Regular Weekly Sales:

Thursday: Sheep, Lamb, Goats, Veal

Tuesday: Cows, Bulls, Fats

Friday: Vacc and Non-Vacc

Stockers and Feeders

Eastern and Western Calves Available Weekly

Office: 519-887-6461

Mark Ferraro: 519-492-0181

Chris Ferraro: 519-323-8025

Matt Ferraro: 519-313-0583



Angus Influence Stocker Sale

First Thursday in October Every Year!

Regular Weekly Sales:

Monday: Sheep, Lamb, Goats, Veal

Wednesday: Cows, Bulls, Fats

Thursday: Vacc and Non-Vacc

Stockers and Feeders

"It PAYS to sell at Ontario Stockyards!"

Office: 705-458-4000

Ab Carroll: 705-344-6654

Brian Pascoe: 705-878-6918



METZGER
Veterinary Services



Oxford Bovine Veterinary Professional Corporation

Serving the Southwestern Ontario Cattle Community

Dave Carson, D.V.M.

Matt Walker, D.V.M.

Stephen Elgersma, D.V.M.

Frank Jongert, D.V.M.

Eric Perrin, D.V.M.

Kristin Ferguson, D.V.M.

Rachel Budd, D.V.M.

Andrew deHaan, D.V.M.

Phone: (519) 423-6706 1-888-632-2697 Fax: (519) 423-6989
484272 Sweaburg Road, Beachville, ON N0J 1A0

WE HAVE
the ones
WE HAVE
the service
WE OFFER
more options.

YOUR BUSINESS DEMANDS MORE... WE DELIVER MORE!

YOUR SUCCESS *Our Passion.*
Phone: 1-800-265-0043 • www.selectsirescanada.com
*Your Success Our Passion, and the Select Sires logo is a registered trademark of Select Sires Inc., Plain City, Ohio.

BURGESSVILLE GRAIN & FEED INC.

FEED MILL
BURGESSVILLE, ONTARIO

GRAIN ELEVATOR
MOUNT ELGIN, ONTARIO

"LIFE ON A FARM IS A SCHOOL OF PATIENCE; YOU CAN'T HURRY CROPS OR MAKE AN OX IN TWO DAYS."
-HENRI ALAIN



TERMS:

The terms of the sale are cash or cheque, payable at par at the sale location. The right of property shall not pass until after settlement has been made; no invoicing on buyers in attendance unless previous arrangements have been made. Every animal sells to the highest bidder and in cases of disputes, the auctioneer's decision will be final. Announcements from the auction block will take precedence over the printed matter in the catalogue. Current exchange rates will be announced sale day. All monies are in Canadian funds.

CERTIFICATE OF REGISTRATIONS:

A certificate of registry duly transferred will be furnished to the buyer for each animal after payment has been made.

HEALTH:

All animals in the sale have met all necessary health requirements.

PREGNANCY INFORMATION:

All serviceable age females have been pregnancy examined by an accredited veterinarian, giving an estimated length of gestation. This estimated gestation period shall be used only as a guideline to calving and is not a guarantee of actual service.

LIABILITIES:

All persons attend the sale at their own risk. The seller, facility owner and sale manager assume no liability legal or otherwise, for any accidents that occur. It is understood that T Bar C Cattle Co. (2013) Ltd. is acting only as a medium between buyer and seller and is not responsible for any failure on the part of either party to live up to his obligations. Neither does T Bar C Cattle Co. (2013) Ltd. assume any financial obligations to collect or enforce collection of any monies between parties and any legal action that may in exceptional cases be taken must be between the buyer and the seller. T Bar C Cattle Co. (2013) Ltd. assumes no responsibility for any credit extended by the seller to the buyer. The buyer must look to the seller for fulfillment of all guarantees and representations made hereunder.

DELIVERY:

Assistance will be given in getting your purchases home. Each animal becomes the risk of the purchaser as soon as sold.

PHONE, MAIL, WIRE BIDS:

Bidders unable to attend the sale may phone, wire or mail their bids and instructions to the sale manager, auctioneer or special representatives. Bids must be received in sufficient time prior to the sale.

INSURANCE:

We strongly recommend that insurance is purchased for full value.

ERRORS:

All announcements at sale time, written or oral, supersede any written material in the catalogue.



Welcome to the Maternal Movement Sale hosted by Meadow Bridge Angus. It has been fun to watch these animals develop over the past couple of years. The feed program here is fairly simple and represents a real world cow program. The cows are not pushed just because they are in a sale, the cattle are managed to be long term productive animals. The rations are based on double cropping systems with cover crops being the back bone of the diets just like many of our commercial cattlemen. The forages are all analyzed then a TMR is formulated for their stage in life. Minerals are added to the TMR to encourage conception and proper development both of the animal and fetal. In the mineral we use Alltech's Bioplex® trace minerals to provide 100% of the trace minerals from a chelated sources and Sel-Plex® to provide 100% of the animals selenium from selenium yeast. These forms help provide high uptake by the animals and ensure proper growth and development in the not only the calves, but the pregnancies as well. In the summer these cows and calves are on grass and provided our Blueprint® minerals, which also contain 100% the chelated sources. Buy with confidence that these cattle are managed right.

Jason Hurst

519-881-7929

Account Manager and Beef Technical Sales

SARAH MAC DONELL
AREA SALES MANAGER



519 444-8713

sarah.macdonell@stgen.com

www.stgen.ca



Return Undeliverable Canadian Addresses To:
T Bar C Cattle Co. Ltd.
Box 2330, Warman, Saskatchewan S0K 4S0



RETURN POSTAGE GUARANTEED
PORT DE RETOUR GARANTI



WE LIKE EYE APPEALING, POWERFUL CATTLE
AND WE STACK THEM