

11TH ANNUAL ANGUS & SIMMENTAL BULL & FEMALE SALE

MID-WESTERN



MARCH 29, 2025 2:00 PM
GILCHRIST FARMS LUCKNOW ONTARIO



THE LARGEST OFFERING OF BLACK ANGUS BULLS EAST OF THE MANITOBA BORDER

Welcome

I think it's safe to say that everybody living in Ontario is ready for winter to subside. The abundance of snow this winter certainly has created some challenges, but the opportunity for adding a little more moisture to the ground will pay dividends this fall as we we look to wean another calf crop at record high prices. The cattle industry has never been in a better position, stocker calves both male and female are in demand, fat cattle are achieving the highest rail price ever recorded all while feed costs remain in check. From the consumer standpoint beef continues to sell in demand thanks to the quality of product. Cattle producers have been able to supply.

Gilchrist farms is proud to raise Angus cattle and we were extremely humbled in the fall of 2024 to be named the Canadian commitment to excellence award winner from Certified Angus Beef . It is the great work done behind the scenes marketing the brand ensuring brand integrity that continues to propel the best product in the industry forward. A product that each, and every one of us can be proud to say we have a part in.

At Beefway the message we hear from consumers is loud and clear they want to know where their food comes from who raises the animals and the dedication and passion that each family has for their stock. We are proud to work with customers to bring the supply chain full circle showcasing what this great breed has to offer.

Once again this year, we are happy to work with Rehorst Farms as well as Harprey Angus, consigning high quality cattle with a professional and respected reputation to stand behind their program.

We welcome everyone to Gilchrist farms on March 29 for another event, sharing in fellowship and quality Cattle in one of the most prosperous times to be involved.

Brad, Kristie and Peyton Gilchrist



the *Details...*

MARCH 29 2025 2:00PM

GILCHRIST FARMS, LUCKNOW ONTARIO

AUCTIONEER

Carl Wright 519.369.7489

SALE DAY PHONES

Ben Wright 519.374.3335
Levi Rimke 201.851.4515
Chris Poley 306-220-5006
Shane Michelson 403.363.9973
Brad Gilchrist 519.440.6720
Adrian Rehorst 519.357.7077
Kristie Gilchrist (French speaking) 519.998.5696
Allan Hargrave 519.375.5541
Jarrett Hargrave 519.374.5516

MARKETING AGENTS

Jamie O'Shea 519.477.1238

ACCOMMODATIONS

Sommerville Court Motel Bed & Breakfast
Lucknow, ON 866-863-2557
SureStay Plus by Best Western
Kincardine, ON 519-396-8242
TownePlace Suites by Marriot
Kincardine, ON 519 395 2665

DIRECTIONS

From Lucknow head north on County Road 1 to 2nd corner (Grey Ox Ave) turn left or west 4th place on the left. Address: 1269 Grey Ox Ave., Lucknow, ON

WATCH & BID ONLINE

Mark Shologan, DLMS 780.699.5082

Internet Bidding Available



For more information call:

Mark Shologan 780-699-5082 or Purebred Team 780-991-3025

PRESENTED BY:

GILCHRIST FARMS

Brad Gilchrist
1269 Grey Ox Ave RR 5 Lucknow, ON N0G 2H0
519-440-6720
Kristie Gilchrist
(French speaking contact)
519-998-5696
brad@gilchristfarms.com
www.gilchristfarms.com

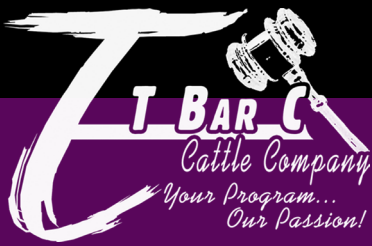
REHORST FARMS LTD.

Adrian Rehorst
412 Con 8 RR 3, Teeswater, ON N0G 2S0
519-357-7077
rehorst@wightman.ca

HARPREY FARMS

Allan Hargrave,
Don Hargrave
and Jarrett Hargrave
307483 Centre Line A,
Proton Station, ON N0C 1L0
519-923-5192
Allan: 519-375-5541 Don: 519-375-1500
Jarrett: 519-374-5516 harprey@gmail.com





Chris Poley: 306.220.5006



Shane Michelson: 403.363.9973



Ben Wright: 519.374.3335



Levi Rimke: 204.851.4515

From the Desk at T Bar C

Every spring, the Mid-Western Bull Sale has proven to be a reliable source of excellent breeding stock, supplying producers across the country. This year, there is the added benefit of several extra-aged bulls, which come as a feature alongside the diverse selection of the Simmental bulls that add flavour to the offering. These well developed bulls are ready to get to work.

The Gilchrist family is known for their impressive operations, with their renowned Beef Way meat packing plant setting them apart from other producers. Buying bulls from the GF brand allows you a great avenue to market your offspring back through the Beef Way or you can sell your reputable GF sired calves back to the Gilchrist family — literally creating a 'pasture to plate' product. A very innovative and intriguing model that gives an advantage to most in the bull buying business.

Also, as always, the Hargrave family offer a fantastic set of heifers that are highly anticipated year after year by producers nationwide. Highly sought after, these well-bred females will do nothing but consistently produce profit for you.

Levi Rimke and myself will be onsite sale day, so please don't hesitate to call and let us give you an evaluation on the seedstock being presented in Lucknow.

Ben Wright

THE FINE PRINT:

Terms: The terms of the sale are cash or cheque, payable at par at the sale location. The right of property shall not pass until after settlement has been made; no invoicing on buyers in attendance unless previous arrangements have been made. Every animal sells to the highest bidder and in cases of disputes the auctioneer's decision will be final. Announcements from the auction block will take precedence over the printed matter in the catalogue. Current exchange rates will be announced sale day. All monies are in Canadian funds.

Certificate of Registration: Each animal will carry papers issued by the Canadian Angus Association, unless otherwise specified. A certificate of registry duly transferred will be furnished to the buyer for each animal after payment has been made.

Pedigree Estimates: Pedigree Estimates (PE) are created on the projected mating of the animal's sire and dam based on averages of the two, creating estimated values that do not hold the same accuracy of actual EPDs issued from the association and should be used as such.

Health: All animals in the sale have met all necessary health requirements.

Guarantee: Each animal becomes the purchaser's risk immediately after the animal is sold. All animals in this sale will be sold under the terms and guarantees set forth by the Canadian Angus Association with regard to health, freedom from defects and from both reproductive and specific genetic unsoundness.

Liabilities: All persons attend the sale at their own risk. The sellers, facility owner, auctioneer and sale manager assume no liability, legal or otherwise, for any accidents that occur. It is understood that T Bar C CattleCo. (2013) Ltd. is acting only as a medium between buyer and seller and is not responsible for any failure on the part of either party to live up to his obligations. Neither does T Bar C CattleCo. (2013) Ltd. assume any financial obligations to collect or enforce collection of any monies between parties and any legal action that may in exceptional cases be taken must be between the buyer and the seller. T Bar C CattleCo. (2013) Ltd. assumes no responsibility for any credit extended by the seller to the buyer. The buyer must look to the seller for fulfillment of all guarantees and representations made hereunder.

Delivery: Every assistance will be given in getting your purchases home. Each animal becomes the risk of the purchaser as soon as sold.

Phone, Mail, Wire Bids: Bidders unable to attend the sale may phone, wire or mail their bids and instructions to the sale manager, auctioneer or special representatives. Bids must be received in sufficient time prior to the sale.

Insurance: Agents will be in attendance to insure your purchases. We strongly recommend that insurance is purchased for full value.

Errors: All announcements at sale time, written or oral, supersede any written material in the catalogue.



Beefway

LOCAL BRUCE COUNTY MEAT

Anyone buying genetics from us and feeding their cattle to finish, we will purchase their cattle at a premium over market

High Quality Local Meat
— RAISED RIGHT HERE —



We are so incredibly grateful for the community we live and do business in! This past October the Kincardine Chamber hosted their annual community achievement awards gala. We were humbled to be considered for the Miller Insurance Brokers agricultural business award among all of the exceptional candidates. All of these businesses make our community a better place and we thank them for all that they do. Bruce county is Agriculture, and to be named the agricultural business award winner means a lot to us as we continue to provide quality service and exceptional product. As a local family owned business our community and customers mean the world to us and today we say THANK YOU!



Lunch by West Coast Catering featuring Beefway steaks



GF BLACKSTOCK 905K

BLACKTOP XXL 5333
S: GF BLACKSTOCK 624G
 LLB LENA 624C

LOT
01

**GFA
 905K**

2406096

CONNEALY FINAL PRODUCT

D: GF JENA 905E
 GF JENA 905C

BW 91

WW 696

**FEB.
 6, 2022**

CE	BW	WW	YW	MCE	MILK
PE 5.0	2.0	67	113	10.5	24

A maternal brother to what is a long list of bulls that have stood out from the crowd! Leading that list is none other than GF Lucknow 905G who demanded \$40,000 as a calf and has went on the produce dense weighing cattle right for the current cattle industry. If you are in the market for a mature bull, built from a proven track record step on up, this long bodied high growth individual is going to produce a set of calves that will push down that scale when it comes time to sell.

- 1 - GF Lucknow 905G, \$40 000 Maternal Brother
- 2 - GF Growth Fund 905H, Maternal Brother
- 3 - GF Rainmaker 905L, Maternal Brother





GF CLEAR WATER 113K

TEHAMA UPWARD Y238

S: TEHAMA TAHOE B767

TEHAMA MARY BLACKBIRD Y684

BAR-E-L NATURAL LAW 52Y

D: PM TIBBIE 4'15

POPLAR MEADOWS TIBBIE 17'10

LOT

02

BW 82

WW 676

GFA

113K

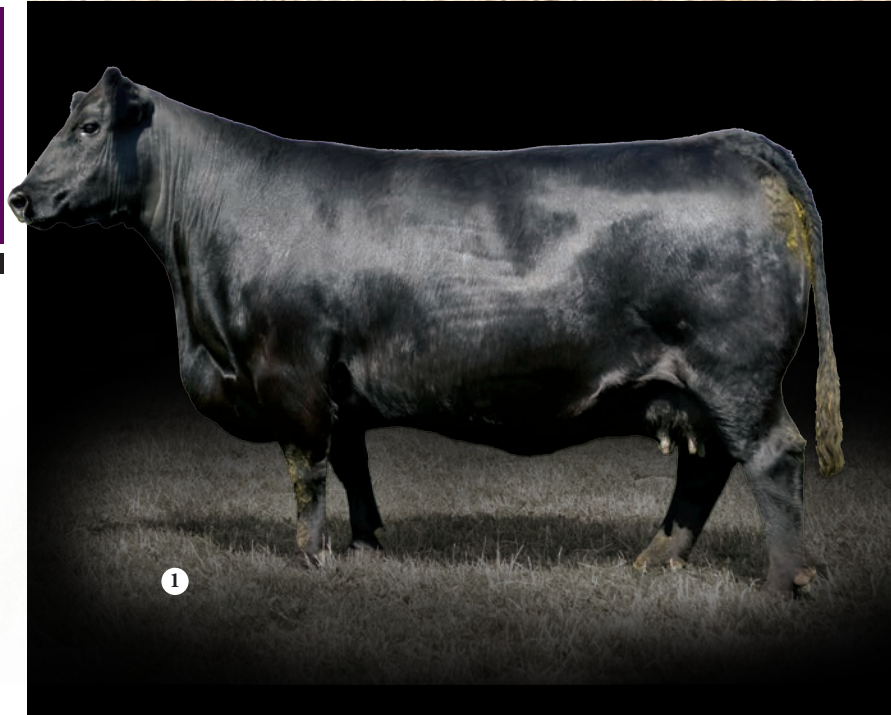
2355350

OCT.
10, 2022

CE	BW	WW	YW	MCE	MILK
PE 8.0	1.5	70	123	8.5	25

Herd bull material here! We liked this sire so much we used him ourself in our heifer pen last breeding season and now we are happy to share his abilites with the rest of the cattle industry. Straight from our ET program this sire combines the proven highly maternal Tahoe with Tibbie 4c. He ranks well for both performance traits while being safe to use in the heifer pen. We are excited to see how his first calf crop matures and look forward to working with the new owner on marketing opportunities. **Heifer Pen approved.**

1 - PM TIBBIE 4'15, Dam





GF KOZI 440M

KOUPAL KOZI 22
S: KOUPAL KOZI 418

KOUPAL EBONETTE 263

BAR-E-L NATURAL LAW 52Y

D: PM TIBBIE 4'15

POPLAR MEADOWS TIBBIE 17'10

LOT

03

BW93

WW861

**GFA
440M**

2406094

JAN.
10, 2024

CE	BW	WW	YW	MCE	MILK
PE 8.0	2.5	69	123	6.5	27

From one of our most influential donors in recent years this is the natural son of Tibbie 4C. Sired by Kozi, we think this one has the potential to be a big time herd bull raising cattle that fit the current beef market. If you want to go ahead and retain females from this bull you won't be disappointed and if you are more looking at cashing in on the record high prices you will have an abundance of weight to do so.

- 1 - GF Tibbie 440H, Maternal Sister
- 2 - PM Tibbie 4'15, Dam





GF CRAFTSMAN 1080M

SITZ RESILIENT 10208

S: CONNEALY CRAFTSMAN

BLACK CATHY OF CONANGA 8521

E&B CONFEDERATE 507

D: CONLEY SANDY 7350

CONLEY S SIS SANDY 4350

LOT

04

BW 88

WW 880

GFA 1080M

PENDING

JAN. 10, 2024



1

Here is an interesting pedigree combining the popular Craftsman with the show stopping cow family Sandy. If you are looking for a bull the combines performance and look in one package, then this guy does it about as good as any. Proven cow family with a track record for success.

1 - Conley Sandy 7350, Dam

CE	BW	WW	YW	MCE	MILK
PE 5.5	1.3	63	112	8.5	30



GF BRUTUS 415M

BALDRIDGE BRONC

S: BROOKDALE BRUTUS 390

BROOKDALE JODIE 786

LEACHMAN SAUGAHATCHEE 3000C

D: GF EVENING TINGE 8001E

JL EVENING TINGE 8001

LOT

05

BW 84

WW 788

GFA 415M

PENDING

FEB. 20, 2024

CE	BW	WW	YW	MCE	MILK
PE 1.0	3.3	80	138	5.0	31

The Brutus progeny are really adding muscle shape and dimension to his progeny and we see this bull following in the same footsteps. Direct from our ET program this son of Evening Tinge 8001E is among numerous other maternal siblings to be held in high regard. This cow consistently creates valuable progeny with added depth, shape and overall balance



KARALISHA **BRUTUS** 414M

BALDRIDGE BRONC
S: BROOKDALE BRUTUS 390
 BROOKDALE JODIE 786

B C LOOKOUT 7024
D: GF EVENING TINGE 7H
 GF EVENING TINGE 81A

LOT
06

BW 102

WW 765

KSCC
414M

2363159

FEB.
 12, 2024

CE	BW	WW	YW	MCE	MILK
-4.0	5.0	85	140	0.0	28



1

Dense raw power in this impressive Brutus son. Deep quartered, square hipped and bold ribbed is the simplest way to describe this herd bull. His dam is an impressive female gaining momentum as a top producer continuing to create progeny that sort themselves to the top of the pen.

1 - GF Evening Tinge 7H, Dam

GF **NATURAL LAW** 410M

S A V BISMARCK 5682
S: BAR-E-L NATURAL LAW 52Y
 BAR-E-L MAGNOLIA 143K

S A V 004 DENSITY 4336
D: JL FLORESSA 5531
 HF FLORESSA 42P

LOT
07

BW 88

WW 868

GFA
410M

PENDING

FEB.
 15, 2024

CE	BW	WW	YW	MCE	MILK
PE 3.5	3.0	55	98	6.0	25

What is a picture day in the Winter of 2025 without the biggest snowflakes I have ever seen in the air. From one of the most impressive females ever to walk at Gilchrist farms Floressa 531C and the maternal legend himself Natural law. Like a fine wine this is a bull that will only get better with age and will be an absolute standout mature sire. If you keep your heifers to build a herd this one needs to be on the list.



1



2

1 - GF Floressa 531H, Maternal Sister 2 - JL Floressa 5531, Dam





GF VALENTE 424M

PA VALOR 201
S: RAVEN VALENTE F79
 RAVEN CHESSY LUCY D305
 S A V 004 DENSITY 4336
D: JL FLORESSA 5531
 HF FLORESSA 42P

LOT
08
 BW 94
 WW 680

GFA
424M
 PENDING
 MAR.
 20, 2024

CE	BW	WW	YW	MCE	MILK
PE 6.0	3.0	64	114	6.5	25

The only resulting animal from this particular flush you can rest assured he will never be able to be replicated! Straight from our ET program and Tibbie 4c this son of Valente will add loads of performance to a herd with an abundance of maternal greatness.

- 1 - GF Floressa 531H, Maternal Sister
- 2 - JL Floressa 5531, Dam





GF HIGH CLASS 152M

SCHIEFELBEIN SHOWMAN 338

S: GREENWOOD HIGH CLASS JJP 87H

HF TIBBIE 22C

5T POWER CHIP 4790

D: GF BAILEY 52H

KEMP BROTHERS BAILEY 52D

LOT

09

BW 80

WW 794

**GFA
152M**

2406091

**JAN.
9, 2024**



One of the most complete bulls in the sale, this bull combines a stacked pedigree of proven AI sires. Highclass, Powerchip, Resource, and Bismarck in the first 4 generations. His dam is a productive young cow with a great udder and always raising calves that weigh up. **Heifer pen approved**

1 - GF Bailey 52H, Dam 2 - Kemp Brothers Bailey 52D, Maternal Grand Dam

CE	BW	WW	YW	MCE	MILK
PE 5.5	1.7	61	102	3.5	20

GF HIGH CLASS 164M

SCHIEFELBEIN SHOWMAN 338

S: GREENWOOD HIGH CLASS JJP 87H

HF TIBBIE 22C

MERIT WHISKEY 8010F

D: IRCC JYPSY ROSE 164J

BLAIR'S ROSE 619G

LOT

10

BW 62

WW 668

**GFA
164M**

2406092

**JAN.
25, 2024**



CE	BW	WW	YW	MCE	MILK
PE 3.5	1.6	63	114	2.5	25

Looking for a sleep easy heifer bull, this high class son fits the bill. His dam is a young productive cow we are excited about for her future here at Gilchrist farms. Big hipped, long bodied and added growth this bull will improve your bottom line working in the heifer pen. **Heifer pen approved.**



GF RLF QUARTERBACK 143M

S A V REGARD 4863
S: S A V QUARTERBACK 7933
 S A V BLACKCAP MAY 3525
 5T POWER CHIP 4790
D: J6 EVENING TINGE 143G
 GF EVENING TINGE 1X

LOT
11
 BW 86
 WW 879

GFA
143M
 2406090
 JAN.
 1, 2024

CE	BW	WW	YW	MCE	MILK
PE 4.0	2.5	72	116	5.0	21

Powerful and added growth from one of our most influential cow families Evening Tinge. Out of a full sister to GF Evening Tinge 1X, this bull has been a standout since birth. Look to add performance and growth with this impressive son of Quarterback.

- 1 - JL Evening Tinge 8001,
- 2 - GF Evening Tinge 1X, Maternal Grand Dam
- 3 - GF RLF Cash Advance 243J, Maternal Brother



12



1 - GFA 5A, 2 - GF Kryptonite 50J, Sire

13



1 - GF Evening Tinge 17Y, Maternal Grand Dam

GF KRYPTONIUM 002M

SCHIEFELBEIN ATTRACTIVE 4565

S: GF KRYPTONITE 50J

GF PURE PRIDE 5F

KOUPAL JUNCTION 037

D: GF EVENING TINGE 002F

JL EVENING TINGE 1282

LOT

12

BW 84

WW 736

GFA 002M

2406089

JAN. 28, 2024

CE	BW	WW	YW	MCE	MILK
PE 5.5	1.3	63	105	1.0	29

A calving ease option that has maternal traits on the top and bottom side of his pedigree. Out of a past high seller GF Kryptonite 50J was purchased by BCR cattle in TX and has produced some excellent progeny for both ourselves and BCR. The dam of this bull has always been a standout with a phenomenal udder and added growth. Look for extended length of spine to add weight to his calf crop. **Heifer pen approved**

GF HIGH CLASS 400M

SCHIEFELBEIN SHOWMAN 338

S: GREENWOOD HIGH CLASS JJP87H

HF TIBBIE 22C

S A V CUTTING EDGE 4857

D: GF EVENING TINGE 400H

GF EVENING TINGE 17Y

LOT

13

BW 92

WW 719

GFA 400M

2406093

JAN. 14, 2024

CE	BW	WW	YW	MCE	MILK
PE 2.0	2.4	62	106	4.0	26

Everyone who visits our place will ask about the mother of this bull. She is as stout and big middled as they come. A female we take great pride in combining structural integrity, maternal excellence and performance.



GF VALENTE 7M

PA VALOR 201
S: RAVEN VALENTE F79
 RAVEN CHESSY LUCY D305
 SCHIEFELBEIN ATTRACTIVE 4565
D: WHISKEY LANE JEWEL 7J
 SANE N.W. QUEENETTE 103Y

LOT
14

BW 71
WW 785

GFA 7M
 2406095
 JAN. 10, 2024

CE	BW	WW	YW	MCE	MILK
PE 6.5	2.1	70	127	4.0	25

This attractive son of Valente has loads of maternal behind him. Everytime I have the opportunity to visit both the Raven herd and Whiskey lane I am impressed by our alignment of values. Maternal strength, combined with performance without reaching for the extremes are some of the things that come to mind. This bull will blend maternal and performance as good as any. **Heifer pen approved**



GF UPGRADE 16M

DIABLO DELUXE 1104
S: RIVERBEND UPGRADE 8605
 BLACK GOLD RITA 527
 S A V PRESIDENT 6847
D: REHORST PRESIDENT LUCY 16J
 LLB YOUNG LUCY 967E

LOT
15

BW 59
WW 780

GFA 16M
 PENDING
 JAN. 10, 2024

CE	BW	WW	YW	MCE	MILK

I have always liked this bull and his growth patern as he has developed. He is a bull who does a lot of things well in a package that is expectionanly well balanced and possesses a great deal of breed character



GF NEVADA 163L

SPRING COVE RENO 4021
S: RAVEN NEVADA G100
 RAVEN BLACKBIRD BLACKIE E300
 MOHNEN PULSE 533
D: GF BARBARA 63J
 GF BARBARA 63G

LOT
16

BW 82
WW 801

GFA 163L
 2337641
 JAN. 20, 2023

CE	BW	WW	YW	MCE	MILK
PE 6.0	1.5	66	114	6.5	22

We used Nevada heavily as a proven calving ease bull that will not give up performance. This sire from the Barabara cow family has matured well and we expect him to continue to provide calving ease and maternal attributes to his progeny without giving up growth and length of spine. **Heifer pen approved**



GF PROFESSOR 24L

CONNEALY SHREK 4242
S: BLACKTOP XXL 5333
 BLACKTOP BANDOLIER LADY 333
 BAR-E-L NATURAL LAW 52Y
D: PM TIBBIE 4'15
 POPLAR MEADOWS TIBBIE 17'10

LOT
17
 BW90
 WW884

GFA
24L
 2355998
 FEB.
 18, 2023

CE	BW	WW	YW	MCE	MILK
PE 7.5	1.5	64	109	11.0	23

Tibbie 4c has created a group of progeny that flat out get it done. This bull with extra age combines depth of rib, muscle shape and a strong sense of maternal attributes we are striving to produce. Sired by XXL this son presents an interesting pedigree able to cover a large number of producers needs.

1 - GF Blackstock 624G,



1

18



19



GF POWERCHIP 322L

EXAR BLUE CHIP 1877B
S: 5T POWER CHIP 4790
5T MISS WIX 8002

CONNEALY FINAL PRODUCT
D: GF ANNE 600E
WHISKEY LANE ANNE 6C

LOT
18
2355344

BW 87
WW 830

GFA 322L
MAR. 4, 2023

CE	BW	WW	YW	MCE	MILK
PE 7.5	2.4	66	107	9.0	24

We sold his dam privately as a calf as the pick of the herd a number of years ago with the understanding that we would be able to flush her when the time was right. We have had a number of progeny now from this flush and are looking forward to the first daughters coming into production this year. **Heifer pen approved**

GF POWERCHIP 4022L

EXAR BLUE CHIP 1877B
S: 5T POWER CHIP 4790
5T MISS WIX 8002

S A V RAINFALL 6846
D: BAR 5 JENNIFER 0422
JL JENNIFER 7055

LOT
19
2355998

BW 65
WW 751

GFA 4022L
JAN. 23, 2023

CE	BW	WW	YW	MCE	MILK
11.5	-0.5	57	100	7.0	24

Moderate and easy fleshing this sire is wide topped and loose hid. If you want to see your progeny convert feed with ease this one is built for success. One of the lowest birth bulls in the sale with extra age we expect to hear nothing but good things from what he can produce. **Heifer pen approved**

20



1 - SAV Net Worth 4200, Sire 2 - JL Lady 3059, Dam

21



1 - SRH Hannibal 5H, Sire 2 - FVFR BLK Ms Pride 44D, Dam

REHORST NEW WORTH 417M

S A V 8180 TRAVELER 004
S: SAV NET WORTH 4200
 S A V MAY 2410
 S A V FOUR SEASONS 5231
D: JL LADY 3059
 LADY OF PEAK DOT 779L

LOT
20
 BW 79

RHFL 417M
 APPLIED FOR
 FEB. 14, 2024

CE	BW	WW	YW	MCE	MILK
PE -1.5	4.8	53	95	2.5	24

Very nice bull and has that Net Worth look. Lady 59A, was our donor cow purchased as the lead off cow at the famous Johnson Livestock dispersal, now residing as a donor at Stepler Farms. The sire of 417M Net Worth needs no introduction and this combination creates an exceptional and deep pedigree.

REHORST HANNIBAL 413M

REMINGTON LOCK N LOAD 54U
S: SRH HANNIBAL 5H
 SRH PRECIOUS 73A
 R PLUS 2168Z
D: FVFR BLK MS PRIDE 44D
 FVFR BLK MS PRIDE 13Z

LOT
21
 BW 70

RHFL 413M
 1503192
 JAN. 13, 2024

CE	BW	WW	YW	MCE	MILK
13.8	0.1	73.4	109.9	6.2	16.8

Hannibal has been our go to bull for calving ease and performance. 413M sired by Hannibal and out of a real nice dam with R Plus breeding. 413M is correct in every aspect. Heifer safe, and great on cows and performance once they get going. Real nice baldy bull we are proud to offer.

SEMEN

ELLINGSON
LANDMAN 4358





TOP 1%

✓ **CLAW** ✓ **ANGLE** ✓ **\$M**

MEET THE BULL WHO **HAS IT ALL**

ELLINGSON **LANDMAN** 4358

ELLINGSON RIDER PRIDE 7282	SEMEN LOT	4358
S: ELLINGSON BADLANDS 0285	22A-E	
EA BELLS GIRL 7617		AAA 20989466
ELLINGSON PROFOUND 8155		MAR. 5, 2024
D: EA LASSIE 2083		
EA LASSIE 9852		

CE	BW	WW	YW	MCE	MILK
13	1.1	78	132	13	30

One of the most important decisions producers need to make is selecting the right bull for their herd. Not only does that decision dictate the opportunities for the following calf crop, but it sets in motion annual opportunities through retained females building generational value in terms of genetic potential. Phenotypic attributes such as structure, bold and robust spring of rib, thickness, muscle dimension, breed character and temperament are all things that are extremely important in a good sire. Once you find a bull that covers all of those bases in today's world where pounds pay bills, one needs to ensure that the genetic package that we are making generational decisions on has the data to propel a herd forward. The brutal truth is that getting all of this in one package is extremely hard. Ellingson Landman 4358 is that genetic package for us. Simply put, it is your decision whether you want to be a part of Landman or not, but I can assure you finding a genetic package combined with the phenotypic attributes he possesses is extremely difficult.

Consigned by Gilchrist Farms

SELLING 5 PACKS OF 5

22A - 5 Units 22B - 5 Units 22C - 5 Units 22D - 5 Units 22D - 5 Units



1 - R Plus Mandate 1044J, Sire 2 - Wepler's Jaelyn, Dam

23

24

RHF MANDATE 412M

R PLUS YUMA 9087G
S: R PLUS MANDATE 1044J
 MISS R PLUS 4193B
 WEPLERS GODFATHER
D: WEPPLER'S JAELYN
 LFE BS DREAMLADY 62C

LOT
23
 BW 70

RHF
412M
 1503165
 JAN.
 13, 2024

CE	BW	WW	YW	MCE	MILK
7.7	3.8	83.7	129.4	2.1	19.5

412M is a big topped deep sided bull that is at the top of our Sim group this year . His dam is a beautiful great uddered massive cow we bought from Wepler out of the Wescott bull . 412M sire is no other than the great R Plus Mandate bull , the high selling bull to Rainbow River at the R Plus dispersal . Super breed bull here! Expect exceptional performance and calving ease .

RHF RELENTLESS 415M

YARDLEY UTAH Y361
S: W/C RELENTLESS 32C
 MISS WERNING KP 8543U
 MADER THE NATIONAL 43E
D: JHM ALWAYS FLIRTIN 201H
 JHM ALWAYS FLIRTIN 65D

LOT
24
 BW 68

RHF
415M
 APPLIED FOR
 FEB.
 3, 2024

CE	BW	WW	YW	MCE	MILK
PE11.4	2.4	77.3	107.6	5.1	16.1

Great bull prospect here with an exceptional Pedigree . 415M's dam with the Flirtin pedigree was our RHF donor and is now a donor at Double Bar D and is sired by Mader the National . The sire W/C Relentless 32C is very current and leaving his mark as a very correct sire in every category . OK for cows and heifers.



GF MERCEDES 408M

WAR CAVALRY B063 Z044
S: WILKS REGIMENT 9035
 WAR CC87 Z044 X029

CARDINAL CASH ADVANCE 60F
D: GF MERCEDES 219K
 GF MERCEDES 219F

LOT
25

BW 75

WW 665

GFA 408M

2406261

MMM. DD, 2024

CE	BW	WW	YW	MCE	MILK
----	----	----	----	-----	------

A well muscled, long spine female that combines performance with the maternal attributes of Mercedes. He do sell heifer who will mature nicely into a broad cow, providing added gross and Performance to her progeny.



- 1 - GF Mercedes 219F, Maternal Grand Dam
- 2 - GF Benz 219J, Maternal Brother
- 3 - HCC Black Mercedes 13N ,



GF MERCEDES 407M

WAR CAVALRY B063 Z044
S: WILKS REGIMENT 9035
 WAR CC&7 Z044 X029

LOT
26

GFA
407M

CARDINAL CASH ADVANCE 60F
D: GF MERCEDES 291K
 GF MERCEDES 219F

BW 76
 WW 654

2406260
 MMM.
 DD, 2024

CE	BW	WW	YW	MCE	MILK
-	-	-	-	-	-

Another Mercedes female, that is extremely closely related to the previous Heifer. These heifers are similar in their type and kind, and this one too, has added growth and length of spine. With the cattle industry at an all-time high these females have the potential to make an awful lot of money for producers

- 1 - GF Mercedes 219F, Maternal Grand Dam
- 2 - GF Benz 219J, Son of Mercedes 219F
- 3 - HCC Black Mercedes 13N ,



Welcome from the Hargraves

We are excited to once again have our open heifers showcased in the Midwestern bull and female sale.

The quality runs deep in this group again and we feel there is no better time to add solid females that will go on to make high quality brood cows. All Heifers are double vaccinated with Express 10 and tasvax.

If theres any questions please feel free to reach out.

THE HARGRAVES

Allan: 519-375-5541

Jarrett: 519-374-5516

Don: 519-375-1500

harprey@gmail.com





HARPREY MADAME PRIDE 28M

COLEMAN CHARLO 0256	LOT	PSH
S: S A V RAINFALL 6846	27	28M
S A V BLACKCAP MAY 4136		2398752
S A V NET WORTH 4200	BW 86	
D: S A V MADAME PRIDE 8588	WW 557	JAN.
S A V MADAME PRIDE 0075		7, 2024

CE	BW	WW	YW	MCE	MILK
9.0	0.6	51	93	7.5	31

This big broody heifer is a strong individual sired by the renowned bull SAV Rainfall. This heifer's robust frame, calm demeanour, and solid body structure, makes her an ideal addition to any herd. This heifer holds great promise in terms of both productivity and growth.

- 1 - Lot 26, Harprey Madame Pride 28M
- 2 - S A V Rainfall 6846, Sire
- 3 - S A V Madame Pride 8588, Dam





HARPREY ANNA 24M

S A V RENOWN 3439
S: SA V RENOVATION 6822
 S A V MADAME PRIDE 0151

BAR-E-L NATURAL LAW 52Y
D: WILLDINA NL ANNA 156J
 WILLDINA BUILT ANNIE 91G

LOT
28
 BW 84
 WW 593

PSH
24M
 2369725
 JAN.
 6, 2024

CE	BW	WW	YW	MCE	MILK
1.0	3.2	63	114	3.0	19

24M is best described as deep, wide-made, and up-headed, a prime example of strong traits passed down from her popular sire, SAV Renovation. This heifer exhibits a robust and balanced frame, with depth in the body, width in the chest, and an elevated head carriage, indicating a desirable conformation. This heifer promises to contribute positively to any program.

1 - SA V Renovation 6822, Sire





HARPREY KRISTINA 42M

ELLINGSON THREE RIVERS 8062
S: ELLINGSON BIG RIVER 0052
 EA BLACKCAP 4053
 5T POWER CHIP 4790
D: HARPREY KRISTINA 3J
 HARPREY KRISTINA 59C

LOT
29
 BW 78
 WW 599

PSH
42M
 2369646
 JAN.
 25, 2024

CE	BW	WW	YW	MCE	MILK
6.0	2.4	65	110	6.0	21

This heifer, sired by Ellingson Big River, is a standout in terms of both structural integrity and overall quality. She is deep ribbed, offering ample capacity and a well-balanced body. Her soft-made appearance indicates smooth structure, while her wide-based stance provides added power and dimension. Her modest birthweight provides added flexibility in future matings. Along with the influence of Ellingson Big River, known for siring offspring with exceptional depth, capacity, and muscle, this heifer is set to be a valuable addition to any herd, promising both longevity and productivity.



1 - Ellingson Big River 0052, Sire

30



31



HARPREY CHARMER 47M

BROOKING NATIONAL 0144
S: BAR-E-L SHOW TIME 12K
 BAR-E-L LADY 74H
 COLEMAN BRAVO 6313
D: LFE BA CHARMER 36K
 LFE BA CHARMER 2122D

LOT
30
PSH 47M
 2369750
BW 78
WW 568
FEB. 2, 2024

CE	BW	WW	YW	MCE	MILK
6.0	2.4	65	110	6.0	21

This heifer, sired by BAR-E-L Showtime, stands out with her angular structure, deep middle, and stout build, showcasing a perfect balance of femininity and strength. Her deep ribbed body provides ample capacity, while her stoutness reflects the power and muscle typical of her sire's offspring. Additionally, she is backed by a beautiful dam, purchased from Lewis Farms, further enhancing her genetic potential. This combination of strong sire and exceptional dam makes her a promising candidate for both performance and production in any program.

HARPREY BARBARA 53M

HF ALCATRAZ 60F
S: HARPREY JAMESON 9J
 YOUNG DALE POLLYANNA 92Z
 HARPREY PROVIDENCE 33Y
D: HARPREY BARBARA 69A
 HARPREY BARBARA 67W

LOT
31
PSH 53M
 2369708
BW 90
WW 642
FEB. 5, 2024

CE	BW	WW	YW	MCE	MILK
-7.0	4.6	63	102	2.0	27

This heifer is sired by our herd sire Harprey Jameson 9J, She is long-made with a big middle, showcasing impressive depth and capacity, which contributes to her overall productivity. Her superior foot structure ensures soundness and longevity, making her an excellent candidate for long-term performance in the herd. With Harprey Jameson's influence, this heifer combines power, structure, and femininity, positioning her as a valuable asset for any breeding program.

32



33



HARPREY **BARBARA** MCHENRY 58M

BAR R JET BLACK 5063

S: HOFFMAN THEDFORD

HA RITO LADY 3839

HART ROLL CALL 7086

D: HARPREY BARBARA MCHENRY 43K

HARPREY BARBARA MCHENRY 68H

LOT

32

PSH
58M

2369744

BW 82

WW 681

FEB.
10, 2024

CE	BW	WW	YW	MCE	MILK
8.0	1.7	79	143	7.0	30

This heifer, sired by Hoffman Thedford, is a standout big-time brood cow prospect. Her dam, 43K is an absolute favourite, and contributes to her impressive genetics. The heifer is exceptionally well-built, with a wide frame and powerful structure, making her an ideal candidate for producing high-quality offspring. Her comfort in her skeleton ensures she'll maintain soundness and longevity, further enhancing her value as a brood cow. With her strong physical attributes and solid pedigree, she's poised to be an excellent addition to any herd.

HARPREY **KIM** 65M

HF ALCATRAZ 60F

S: HARPREY JAMESON 9J

YOUNG DALE POLLYANNA 92Z

C&C TUITION 3025 EXAR

D: HAMMELL 2C KIM 9F

HAMMELL 879S KIM 2C

LOT

33

PSH
65M

2393800

BW 82

WW 542

FEB.
15, 2024

CE	BW	WW	YW	MCE	MILK
-2.0	2.7	54	95	7.0	28

Another solid female sired by Harprey Jameson 9J, is a well-balanced and sound-structured animal. She combines the strength and power of her sire with an exceptional level of femininity and correctness. Coming from a highly productive cow, she possesses the traits needed for both longevity and high performance in your program.

34



35



HARPNEY **KIM** 68M

S A V RESOURCE 1441

S: SBF ASSETS 0025

STRONGBOW LUCY 27D

KR PACESETTER

D: HAMMELL 14F KIM 9H

HAMMELL 879S KIM 14F

LOT

34

BW 74

WW 528

**PSH
68M**

2369634

**FEB.
20, 2024**

HARPNEY **BARBARA** MCHENRY 83M

S A V RESOURCE 1441

S: SBF ASSETS 0025

STRONGBOW LUCY 27D

KR PACESETTER

D: HARPNEY BARBARA MCHENRY 14H

HARPNEY BARBARA MCHENRY 7X

LOT

35

BW 82

WW 574

**PSH
83M**

2369636

**MAR.
3, 2024**

CE	BW	WW	YW	MCE	MILK
-2.0	2.7	54	95	7.0	28

This heifer, sired by SBF Assets, is a structurally correct and smooth-made female. Her well-balanced frame and structure make her an excellent example of quality breeding. Her dam is raising one of our most promising 2025 bull calves. This heifer promises to bring both genetic value and physical soundness, making her a solid investment for the future of any herd.

CE	BW	WW	YW	MCE	MILK
2.0	2.8	59	114	6.0	25

Another impressive offspring of SBF Assets, is moderate-framed and stout-made. Her powerful build showcases excellent muscle and structure, making her a solid option for any breeding program. With her balanced size and strength, she offers both genetic value and physical reliability, making her a great addition.

Return Undeliverable
Canadian Addresses to:
T Bar C Cattle Co. Ltd.
Box 2330
Warman, SK S0K 4S0

