

# MOMENTUM

## SPECKLE PARK & ANGUS BULL AND FEMALE SALE

BULLS | COW CALF PAIRS | HEIFERS | FROZEN GENETICS



**SUNDAY, APRIL 6, 2025 AT 1:00PM**  
**Champetre County, St. Denis, SK**

**COLGAN'S**  
CATTLE COMPANY

**RAVENWORTH**  
CATTLE

**ELLDEN**  
CATTLE INVESTMENTS

# Catch the Momentum



**COLGAN'S**  
CATTLE COMPANY



**ELDEM**  
CATTLE INVESTMENTS

We are excited to announce that this is the 5th annual Momentum Sale! With each passing year, we've worked tirelessly to offer an even broader and more diverse selection of Angus and Speckle Park genetics, all while upholding our commitment to quality.

As breeders, we truly value your business and want to extend our deepest thanks to all the buyers, bidders, and supporters of our past sales. Our success is directly tied to the success of our customers, and we know that building strong, lasting relationships is essential for everyone's growth in the cattle industry.

We are thrilled to once again host the sale at the "Howling Coyote Saloon" in Champetre County, St. Denis, SK. This unique venue provides an unforgettable Old West experience, and we personally invite you to join us. On sale day, all the cattle will be on display for you to evaluate. You can also find videos of the sale lots on dlms.ca and buyagro.com. Be sure to check our Facebook pages for more information and updates leading up to the event. On farm bull pen tours available just contact us.

## Speckle Park Coat Colour Legend

ED/ED      Homozygous Black  
ED/e        Red Carrier

## Speckle Park Polled Legend

P/P            Homozygous Polled  
P/H            Heterozygous Polled

From the desk at *T Bar C...* **VIEW THE CATALOGUE ONLINE AT [WWW.BUYAGRO.COM](http://WWW.BUYAGRO.COM)**

Welcome to the 5th Annual Angus and Speckle Park Bull and Female Sale on April 6, 2025, at Champetre County, St. Denis, Saskatchewan. What a great way to spend a Sunday afternoon selecting your breeding stock from a large offering of seedstock and rekindling the past of the old west in the "Howling Coyote Saloon!"

In this the fifth year, the lineup is the strongest and most exciting as ever, whether you are searching for a herd bull or a fancy foundation type female. The Angus section of the offering is represented by Ravenworth Cattle and Elldem Investments featuring powerful performance sires that will add pounds at weaning. The genetic diversity gives you a host of opportunities to select a bull for your cows or heifers. These bulls are full of thickness, muscle, optimum in frame, lots of hair and testicle. Many of the bulls are A.I. sired, giving you the newest genetics available, predictable in production and out of strong cow families. You will want to keep all the daughters in your replacement pastures.

The Angus females in the offering are front pasture material... fancy fronted, broody with bred in performance. As we try to restock the North American cow herd, these females are valuable assets whether you are a purebred breeder or a commercial producer.

The Speckle Park offering represents two leading breeders. Colgan's Cattle Company and the Berting's at Ravenworth Cattle. Both breeding units run high quality operations with large productive cow herds and competitive programs. Colgan's feature "Magnum" who with his mother were undefeated in this past show season being Grand Champion at Ag-Ex, Farm Fair and Canadian Western Agribition. The strength of the Colgan program is the progeny of "General 20G", a sire that has become a legend in the industry. The progeny of "Kraken" headlines the Berting offering with many calving ease bulls for the heifer pen. If you like ribbons and banners, checkout the Speckle Park female offering. Fancy, attractive and competitive. These girls will be foundation females in their new homes. The pairs offered are a bonus and don't overlook the embryos and semen, which will wrap up an exciting Sunday shopping list.

Do not hesitate to visit the farms prior to the sale, preview the bulls in their natural surroundings or just call these leading breeders to discuss the sale lineup and those that will fit your breeding intentions.

We at T Bar C, are very familiar with these programs and if we may be of any assistance prior to or sale day, do not hesitate to call any of our team and we will be pleased to assist in a professional and confidential manner.

*- Chris Poley*



**CHRIS POLEY**  
306-220-5006



**SHANE MICHELSON**  
403-363-9973



**BEN WRIGHT**  
519-374-3335



**LEVI RIMKE**  
204-851-4515

# MOMENTUM

Speckle Park & Angus Bull & Female Sale

SUNDAY, April 6, 2025

at 1:00 pm

Champêtre County · St. Denis, SK

*please join us for lunch at noon*

## SALE DAY PHONES

Chris Poley, Auctioneer	306-220-5006
Shane Michelson, Ringside	403-363-9973
Ben Wright, Ringside	519-374-3335
Levi Rimke	204-851-4515

## Consignors:

### Colgan's Cattle Company:

Tony Freimark	306-830-8239
Tammy Freimark	306-830-8787

### Ravenworth Cattle:

Garry Berting	306-231-7567
Donna Berting	306-231-5175
Grayson Berting	306-231-6468
Ryker Berting	306-231-9480
Huxley Berting	306-231-8331

### Eldem Cattle Investments:

Barrett Elliot	306-260-8717
Shelby Elliot	306-281-3729
Dean Manson (ASM Cattle)	306-749-7763
David Schneider (Northline Farms)	780-619-1480

## INSURANCE

Larry Toner	306-834-7652
-------------	--------------



**SALE MANAGEMENT**  
**T Bar C Cattle Co. Ltd.**  
Box 2330 Warman, SK S0K 4S0  
info@tbarc.com  
Office: 306-933-4200  
Fax: 306-934-0744  
www.tbarc.com

## TERMS:

The terms of the sale are cash or cheque, payable at par at the sale location. The right of property shall not pass until after settlement has been made; no invoicing on buyers in attendance unless previous arrangements have been made. Every animal sells to the highest bidder and in cases of disputes, the auctioneer's decision will be final. Announcements from the auction block will take precedence over the printed matter in the catalogue. Current exchange rates will be announced sale day. All monies are in Canadian funds.

## CERTIFICATE OF REGISTRATIONS:

Each purebred animal will carry papers issued by the Canadian Speckle Park Association and Canadian Angus Association. A certificate of registry duly transferred will be furnished to the buyer for each animal after payment has been made.

## HEALTH:

All animals in the sale have met all necessary health requirements.

## GUARANTEE:

All sellers and buyers of Speckle Park and Angus cattle in this sale are expected to be knowledgeable of and to abide by the Guidelines for Seller and Buyer Expectations and the By-laws of the Canadian Speckle Park Association and Canadian Angus Association. These documents are available from the Association offices.

## PREGNANCY INFORMATION:

All serviceable age females have been pregnancy examined by an accredited veterinarian, giving an estimated length of gestation. This estimated gestation period shall be used only as a guideline to calving and is not a guarantee of actual service.

## SCHEDULE

SATURDAY APRIL 5, 2025

3PM Cattle viewing, Smokies & Social

SUNDAY, APRIL 6, 2025

10AM - CATTLE VIEWING

NOON - LUNCH AT THE SALOON

1 PM SALE TIME

## SALE LOCATION

Champêtre County



St. Denis, SK Phone: 306-258-4635  
Located 35 km East of Saskatoon on Highway #5, turn North at Highway 671 towards St. Denis. Travel 6.5 km North and 0.8 km West.

## ACCOMMODATIONS

Champêtre County

St. Denis, SK

Phone: 306-258-4635

## VIDEOS

View Videos on

[www.buyagro.com](http://www.buyagro.com) or [www.dlms.ca](http://www.dlms.ca)

## ONLINE BIDDING

Watch and bid online with DLMS

**D | L | M | S**  
[www.dlms.ca](http://www.dlms.ca)

## LIABILITIES:

All persons attend the sale at their own risk. The seller, facility owner and sale manager assume no liability legal or otherwise, for any accidents that occur. It is understood that T Bar C Cattle Co. (2013) Ltd. is acting only as a medium between buyer and seller and is not responsible for any failure on the part of either party to live up to his obligations. Neither does T Bar C Cattle Co. (2013) Ltd. assume any financial obligations to collect or enforce collection of any monies between parties and any legal action that may in exceptional cases be taken must be between the buyer and the seller. T Bar C Cattle Co. (2013) Ltd. assumes no responsibility for any credit extended by the seller to the buyer. The buyer must look to the seller for fulfillment of all guarantees and representations made hereunder.

## DELIVERY:

Every assistance will be given in getting your purchases home. Each animal becomes the risk of the purchaser as soon as sold.

## PHONE, MAIL, WIRE BIDS:

Bidders unable to attend the sale may phone, wire or mail their bids and instructions to the sale manager, auctioneer or special representatives. Bids must be received in sufficient time prior to the sale.

## INSURANCE:

We strongly recommend that insurance is purchased for full value.

## ERRORS:

All announcements at sale time, written or oral, supersede any written material in the catalogue.

# RAVENWORTH CATTLE

Garry and Donna Berting  
 Box 134  
 Middle Lake, SK S0K 2X0  
 Garry: 306-231-7567  
 Donna: 306-231-5175  
 garry@ravenworth.com  
 www.ravenworth.com



Wow, 20 years of breeding Angus! From our humble beginnings to today, it's been a journey of hard work and dedication and a heck of a ride! It has been a pleasure to meet many amazing cattle people over the years through this purebred business. We appreciate your friendship and support. We could not do this without our family, they are an outstanding team and do an excellent job! Here's to many more years! Our offering has diverse genetics with unique pedigrees that bring tons of performance and consistency coming from a very maternal herd. These bulls have been developed with longevity in mind, we are about the long game and customer satisfaction. We stick to our breeding plan of maintaining structure, phenotype, performance and maternal traits. We also have Angus heifers on offer this year, with some very interesting pedigrees. Contact us for viewing or any questions you may have.

*Ravenworth Cattle*

TOP 20% BW

TOP 15% WW

TOP 10% YW



Lot 1

## RAVENWORTH Stellar 5M

2362768 Male January 02 2024 RAVE 5M

MOHNEN SUBSTANTIAL 272  
 SITZ STELLAR 726D  
 SITZ PRIDE 200B

BASIN RAINMAKER 4404  
 RAVENWORTH RUBY 18K  
 RAVENWORTH RUBY 2G

BENFIELD SUBSTANCE 8506  
 MOHNEN GLYN MAWR ELBA 1758  
 CONNEALY FINAL PRODUCT  
 SITZ PRIDE 308Y

BASIN RAINMAKER 2704  
 BASIN JOY 1036  
 SITZ LOGIC Y46  
 LINWOOD RUBY 32R

As part of our Agribition yards display, the comments from cattlemen evaluating him were extremely positive. With prominent calving ease built in, he developed into a big hipped, deep bodied, thick bull with substantial length of spine, with a real herd bull skull. His dam, a 4404 daughter is a heavy milking first calver, with a beautiful udder.

**CALVING EASE ★★★**

BW	ADJ 205D	ADJ 365D	EPDs	CE	BW	WW	YW	Milk
73	820	1287		5	0.5	70	125	23

TOP 5% CE

TOP 3% BW

TOP 9% WW

TOP 15% YW



Lot 2

### RAVENWORTH Stellar 11M

2362773 Male January 05 2024 RAVE 11M

MOHNEN SUBSTANTIAL 272  
 SITZ STELLAR 726D  
 SITZ PRIDE 200B

BENFIELD SUBSTANCE 8506  
 MOHNEN GLYN MAWR ELBA 1758  
 CONNEALY FINAL PRODUCT  
 SITZ PRIDE 308Y

SITZ ALPINE 11076  
 RAVENWORTH RUBY 32K  
 RAVENWORTH RUBY 8F

KM BROKEN BOW 002  
 SITZ ELLUNAS ELITE 1874  
 S A V INTERNATIONAL 2020  
 RAVENWORTH RUBY 15A

BW	ADJ 205D	ADJ 365D	EPDs	CE	BW	WW	YW	Milk
67	807	1139		11	-1.6	72	123	22

11M is a calving ease big growth combo. A smooth made sure fire heifer bull that is shaped like a bullet. He is deep flanked bull with great angles, a correct structure and impressive muscle pattern. His dam 32K is a big bodied, easy keeping female, the kind we love.

CALVING EASE ★★★

We chose Stellar as a sire because of his powerful, beautiful uddered dam with calving ease built in. Stellar is a foot and udder improver. We have milking daughters and we are pleased with their production. The Stellar bull has worked really well for us in our flush and AI programs.



Sitz Stellar 726D - sire



His dam is a Mohnen Pulse daughter that mates nicely with Stellar, he is a smooth made bull in a stout package, he is a tank. Stamped with the Stellar presence and character.

**CALVING EASE** ★

Lot **3**

RAVENWORTH **Stellar** 18M

2362779 Male January 11 2024 RAVE 18M

MOHNEN SUBSTANTIAL 272  
SITZ STELLAR 726D  
SITZ PRIDE 200B

MOHNEN PULSE 533  
RAVENWORTH ELBA 1E  
RAVENWORTH 68Z ELBA 19C

BENFIELD SUBSTANCE 8506  
MOHNEN GLYN MAWR ELBA 1758  
CONNEALY FINAL PRODUCT  
SITZ PRIDE 308Y

MOHNEN HEARTRATE 1751  
MOHNEN JILT 2360  
SOO LINE MOTIVE 2068  
RAVENWORTH ELBA 14Z

BW	ADJ 205D	ADJ 365D	EPDs	CE	BW	WW	YW	Milk
98	701	1020	EPDs	1	0.8	54	102	19

Lot **4**

RAVENWORTH **Stellar** 20M

2362826 Male January 12 2024 HUXB 20M

MOHNEN SUBSTANTIAL 272  
SITZ STELLAR 726D  
SITZ PRIDE 200B

SOO LINE MOTIVE 2068  
RAVENWORTH 68Z RUBY 1D  
RAVENWORTH 5Y RUBY 12A

BENFIELD SUBSTANCE 8506  
MOHNEN GLYN MAWR ELBA 1758  
CONNEALY FINAL PRODUCT  
SITZ PRIDE 308Y

SOO LINE MOTIVE 9016  
SOO LINE BLACK LADY 8289  
RAVENWORTH THUNDER 5Y  
RAVENWORTH RUBY 1Y

BW	ADJ 205D	ADJ 365D	EPDs	CE	BW	WW	YW	Milk
100	686	1049	EPDs	-1	1.6	52	95	17



Here is another great Stellar sired bull, showing those same strong traits of muscle shape, smoothness and soundness. Rave 1D was a massive ribbed cow, with a great udder and tons of muscle shape. Unfortunately, in July this calf was orphaned, affecting his growth numbers.



Rave 1D - dam

Consigned by Huxley Berting

TOP 10% WW

TOP 15% YW

If you are looking for a true cow bull, here is a Stellar son with added frame, bone, muscle and performance. He is long-spined and smooth made bull that will add pounds to his calves. 23M is a cow bull off of Rave 31F who is a broody, maternal female with outstanding feet and udder.



RAVENWORTH CATTLE

Lot 5



Ravenworth 29D Lady Bate 31F - dam

Lot 5

RAVENWORTH Stellar 23M

Lot 6

RAVENWORTH Rainmaker 19M

2362801 Male January 14 2024 RAVE 23M

2362780 Male January 11 2024 RAVE 19M

MOHNEN SUBSTANTIAL 272  
SITZ STELLAR 726D  
SITZ PRIDE 200B

BENFIELD SUBSTANCE 8506  
MOHNEN GLYN MAWR ELBA 1758  
CONNEALY FINAL PRODUCT  
SITZ PRIDE 308Y

BASIN RAINMAKER 2704  
BASIN RAINMAKER 4404  
BASIN JOY 1036

BASIN RAINMAKER P175  
BASIN ERICA 7520 BV  
BASIN PAYWEIGHT 107S  
BASIN JOY 566T

ROYAL S YELLOWSTONE 29D  
RAVENWORTH 29D LADY BATE 31F  
RAVENWORTH 68Z LADY BATE 9B

SOO LINE YELLOWSTONE 9286  
ROYAL S PRIDE DOLLY 3B  
SOO LINE MOTIVE 2068  
RAVENWORTH LADY BATE 1Z

S CHISUM 6175  
RAVENWORTH ELBA 16Z  
LINWOOD ELBA 10U

S ALLIANCE 3313  
S GLORIA 464  
BON VIEW NEW DESIGN 878  
LINWOOD ELBA 3L

BW	ADJ 205D	ADJ 365D	EPDs	CE
102	848	1229		-3

BW	ADJ 205D	ADJ 365D	EPDs	CE	BW	WW	YW	Milk
89	724	1119		3	2.4	56	105	29

Here is a full sib to the high seller in the 2023 Momentum sale, bought by Key Ranch. 19M will put the pounds on your calves in the fall. The dam RAVE 16Z is a powerful cow that makes 'em right, her bulls always make the bullpen. 19M is sure to make those replacements you will love.



RAVENWORTH CATTLE

Lot 6



Basin Rainmaker 4404 - Sire

TOP 9% WW

TOP 15% YW



Lot 7

### RAVENWORTH Mindset 47M

2368686 Male February 04 2024 RAVE 47M

HOOPER NO DOUBT  
 BOYD/MYERS MINDSET M750  
 THOMAS BUTTERFLY 4742

MOGCK BULLSEYE  
 MISS BLACKCAP ELLSTON J2  
 CONNEALY CONFIDENCE 0100  
 THOMAS BUTTER FLY 21042

S A V INTERNATIONAL 2020  
 RAVENWORTH RUBY 8F  
 RAVENWORTH RUBY 15A

S A V HARVESTOR 0338  
 S A V EMBLYNETTE 5483  
 THOMAS POWDER RIVER 9053  
 LINWOOD RUBY 36U

BW	ADJ 205D	ADJ 365D	EPlus	CE	BW	WW	YW	Milk
89	792	1201		1.5	2.9	72	122	22

Here is to captivating set of twin bulls. Great skulled, proud fronted, big crested, square in design, and straight in their lines, these brothers draw your attention with their magnetic presence. Stout in their makeup, bold in their rib shape, these bulls stand on a wide base. Correct in their structure with great feet and legs, they move with ease. Two awesome herd bulls you don't want to miss sale day.

### CALVING EASE ★★



Boyd/Myers Mindset M750 - sire



TOP 9% WW

TOP 15% YW



RAVENWORTH CATTLE

Max @ Brock

Lot 8

Lot 8

RAVENWORTH Mindset 48M

2368687 Male February 04 2024 RAVE 48M

HOOVER NO DOUBT  
BOYD/MYERS MINDSET M750  
THOMAS BUTTERFLY 4742

MOGCK BULLSEYE  
MISS BLACKCAP ELLSTON J2  
CONNEALY CONFIDENCE 0100  
THOMAS BUTTER FLY 21042

S A V INTERNATIONAL 2020  
RAVENWORTH RUBY 8F  
RAVENWORTH RUBY 15A

S A V HARVESTOR 0338  
S A V EMBLYNETTE 5483  
THOMAS POWDER RIVER 9053  
LINWOOD RUBY 36U

CALVING EASE ★★

BW	ADJ 205D	ADJ 365D	EPDs	CE	BW	WW	YW	Milk
85	706	1132		1.5	2.9	72	123	22



RAVE 48M

TOP 15% CE TOP 30% BW TOP 1% WW TOP 1% YW



Lot 9

RAVENWORTH Growth Fund 16M

2362778 Male January 09 2024 RAVE 16M

BASIN PAYWEIGHT 1682  
DEER VALLEY GROWTH FUND  
DEER VALLEY RITA 36113

BASIN PAYWEIGHT 006S  
21AR O LASS 7017  
PLATTEMERE WEIGH UP K360  
DEER VALLEY RITA 9457

ELLINGSON VERIFIED  
RAVENWORTH RUBY 30K  
RAVENWORTH RUBY 26F

ELLINGSON AUTHORIZE 7057  
EA ROSETTA 1127  
S A V RENOWN 3439  
RAVENWORTH RUBY 3U

BW	ADJ 205D	ADJ 365D	EPDs	CE	BW	WW	YW	Milk
84	959	1448		8	1	94	165	28

16M is the highest indexing bull in the pen. A massive ribbed individual with tonnes of muscle. Extremely soft in his make up, 16M has that ability to sire those fast-gaining calves. A good headed bull with base width, great bone and excellent feet. When you examine 16M and realize he is a heifer's first calf, you can be sure he is a HERD BULL in the making!!!!

CALVING EASE ★★

We used Growth Fund for great calving ease with outstanding, curve bending performance in his calves. Very maternal females with beautiful udders. Many of these calves have made our show string.



Deer Valley Growth Fund - sire

Extremely attractive is his front end with powerful muscle expression, here is another big-time growth individual. He is big over his top and deep in his rib and quarter. Another exceptional bull sired by Growth Fund. You can expect extra pounds \$\$\$ on your calves at weaning.



TOP 2% WW

TOP 25% YW

Lot 10

RAVENWORTH Growth Fund 56M

2362808 Male February 12 2024 RAVE 56M

BASIN PAYWEIGHT 1682  
DEER VALLEY GROWTH FUND  
DEER VALLEY RITA 36113

RAVENWORTH REIGN 8G  
RAVENWORTH RUBY 23J  
RAVENWORTH RUBY 36G

BASIN PAYWEIGHT 006S  
21AR O LASS 7017  
PLATTEMERE WEIGH UP K360  
DEER VALLEY RITA 9457

S A V REIGN 6845  
ROYAL S PRIDE DOLLY 3B  
MUSGRAVE FOUNDATION  
RAVENWORTH RUBY 15A

BW	ADJ 205D	ADJ 365D	EPDS	CE	BW	WW	YW	Milk
94	841	1308	0	3.3	81	144	28	

Lot 11

RAVENWORTH Growth Fund 30M

2362786 Male January 16 2024 RAVE 30M

BASIN PAYWEIGHT 1682  
DEER VALLEY GROWTH FUND  
DEER VALLEY RITA 36113

PAINTROCK TRAPPER  
RAVENWORTH RUBY 22K  
RAVENWORTH 68Z RUBY 30D

BASIN PAYWEIGHT 006S  
21AR O LASS 7017  
PLATTEMERE WEIGH UP K360  
DEER VALLEY RITA 9457

PAINTROCK MOUNTAIN MAN  
EMULOUS OF PAINTROCK 93-9  
SOO LINE MOTIVE 2068  
RAVENWORTH RUBY 32X

BW	ADJ 205D	ADJ 365D	EPDS	CE	BW	WW	YW	Milk
94	828	1305	0	3.5	79	138	25	

WOW! Growth Fund gets it done!!! Another performance bull, in a very attractive package with huge adjusted WW and YW. Displaying a big square hip with an impressively deep quarter, 30M is a herd bull that will add a punch to his calves.



TOP 3% WW

TOP 3% YW

TOP 7% WW

TOP 9% YW



Here is a great cow bull if you want to add pounds to your weaning weights. With outstanding WW and YW. With a little larger frame, he will be able to breed your cowherd. Long with a deep rib and standout phenotype. He was born in the barn, unfortunately his ear froze later from his mothers love in the cold and his tail was stepped on later in life. We are 100% confident in this bull. A maternal sib sold to Deep Lake Livestock as a breeder bull for their herd.

Consigned by Huxley Berting



We chose Baldridge Gibson for his calving ease and growth combination.

Lot 12 RAVENWORTH Gibson 17M  
2362827 Male January 09 2024 HUXB 17M

CONNEALY CONFIDENCE PLUS  
BALDRIDGE GIBSON G859  
BALDRIDGE ISABEL B061

CCCJ LOTTO 21E  
RAVENWORTH RUBY 35G  
RAVENWORTH 68Z RUBY 1D

CONNEALY CONFIDENCE 0100  
ELBANNA OF CONANGA 1209  
G A R PROPHET  
BALDRIDGE ISABEL Y69

BSF HOT LOTTO 1401  
TLA BEAUTY 6R  
SOO LINE MOTIVE 2068  
RAVENWORTH 5Y RUBY 12A

BW	ADJ 205D	ADJ 365D	EPDS	CE	BW	WW	YW	Milk
102	824	1235		-5	3	74	125	31

Lot 13 RAVENWORTH Gibson 12M  
2362774 Male January 07 2024 RAVE 12M

CONNEALY CONFIDENCE PLUS  
BALDRIDGE GIBSON G859  
BALDRIDGE ISABEL B061

BASIN RAINMAKER 4404  
RAVENWORTH RUBY 11K  
RAVENWORTH RUBY 5G

CONNEALY CONFIDENCE 0100  
ELBANNA OF CONANGA 1209  
G A R PROPHET  
BALDRIDGE ISABEL Y69

BASIN RAINMAKER 2704  
BASIN JOY 1036  
EATHINGTON SUB-ZERO  
RAVENWORTH RUBY 28E

BW	ADJ 205D	ADJ 365D	EPDS	CE	BW	WW	YW	Milk
70	814	1190		12	-2.1	69	123	34

TOP 5% CE TOP 2% BW TOP 15% WW TOP 15% YW



An excellent calving ease prospect with phenomenal growth numbers. 12M is a smooth made bull with impressive length of body. With a good Angus head and long fronted he is stamped for calving ease. Combine all of this with his amazing numbers and you have a real breeding piece.

CALVING EASE ★★★



Ravenworth Ruby 5G - maternal grand dam

**TOP 15% CE TOP 10% BW TOP 15% WW TOP 15% YW**

Here is a pair of calving ease bulls with amazing performance and great numbers. Take note 2M & 3M are twins. Good foot and structure topped off with a good angus skull. These bulls are ready to go in your heifer pen. A maternal sib from 2024 sale was selected by Hawkeye Ranching to cover their purebred heifer pen.

Consigned by Ryker Berting

**CALVING EASE ★★★**



**RAVENWORTH CATTLE**

**Lot 14**

**Lot 14**

RAVENWORTH **Resilent** 2M

2362818 Male January 01 2024 RYKB 2M

SITZ STELLAR 726D  
SITZ RESILIENT 10208  
SITZ MISS BURGESS 1856

SITZ ALPINE 11076  
RAVENWORTH RUBY 8J  
RAVENWORTH RUBY 6G

MOHNEN SUBSTANTIAL 272  
SITZ PRIDE 200B  
SITZ TOP GAME 561X  
SITZ MISS BURGESS 4381

KM BROKEN BOW 002  
SITZ ELLUNAS ELITE 1874  
SCHIEFELBEIN EFFECTIVE 61  
RAVENWORTH RUBY 2Y

BW	ADJ 205D	ADJ 365D	EPIs	CE	BW	WW	YW	Milk
64	686	1101		9.5	-0.3	70	120	27

Consigned by Ryker Berting

**CALVING EASE ★★★**



SITZ Resilient 10208 - sire

**Lot 15**

RAVENWORTH **Resilent** 3M

2362819 Male January 01 2024 RYKB 3M

SITZ STELLAR 726D  
SITZ RESILIENT 10208  
SITZ MISS BURGESS 1856

SITZ ALPINE 11076  
RAVENWORTH RUBY 8J  
RAVENWORTH RUBY 6G

MOHNEN SUBSTANTIAL 272  
SITZ PRIDE 200B  
SITZ TOP GAME 561X  
SITZ MISS BURGESS 4381

KM BROKEN BOW 002  
SITZ ELLUNAS ELITE 1874  
SCHIEFELBEIN EFFECTIVE 61  
RAVENWORTH RUBY 2Y

BW	ADJ 205D	ADJ 365D	EPIs	CE	BW	WW	YW	Milk
65	781	1164		9.5	-0.3	70	120	27

**TOP 15% CE TOP 10% BW TOP 15% WW TOP 15% YW**



**RAVENWORTH CATTLE**

**Lot 15**

TOP 15% WW

TOP 20% YW



Lot **16**

RAVENWORTH **Craftsman** 38M

2362794 Male January 21 2024 RAVE 38M

SITZ RESILIENT 10208  
**CONNELY CRAFTSMAN**  
 BLACK CATHY OF CONANGA 8521

SITZ STELLAR 726D  
 SITZ MISS BURGESS 1856  
 CONNEALY NIOBRARA 5451  
 BLACK CARLA OF CONANGA 450

WILBAR LIFT OFF 869H  
**RAVENWORTH 869H RUBY 9K**  
 RAVENWORTH 21E RUBY 25H

FF COUNTDOWN D9  
 WILBAR JENNIFER 151D  
 CCCJ LOTTO 21E  
 RAVENWORTH 29D RUBY 28F

Here is our first offering of Connealy Craftsman sons. 38M is massive in his makeup with explosive muscle expression here is a bull that commands attention. His full crest and base width adds to his masculine presence. A real standout on the profile....

BW	ADJ 205D	ADJ 365D	EPDS	CE	BW	WW	YW	Milk
92	784	1358		-10	4	68	118	32



Connealy Craftsman - sire



RAVE 38M

TOP 25% BW

TOP 20% WW

TOP 20% YW

A low-birth-weight son, with great performance. 40M has a lot of natural muscle and base width. A bull that has a winning look.

CALVING EASE ★★



RAVENWORTH CATTLE

Lot 17

Lot 17

RAVENWORTH Craftsman 40M

2362796 Male January 23 2024 RAVE 40M

SITZ RESILIENT 10208  
CONNEALY CRAFTSMAN  
BLACK CATHY OF CONANGA 8521

WILBAR LIFT OFF 869H  
RAVENWORTH RUBY 23K  
RAVENWORTH RUBY 18G

SITZ STELLAR 726D  
SITZ MISS BURGESS 1856  
CONNEALY NIOBRARA 5451  
BLACK CARLA OF CONANGA 450

FF COUNTDOWN D9  
WILBAR JENNIFER 151D  
CCCJ LOTTO 21E  
RAVENWORTH RUBY 14E

BW	ADJ 205D	ADJ 365D	EPDs	CE	BW	WW	YW	Milk
78	832	1245	EPDs	-2	0.9	67	115	33

Lot 18

RAVENWORTH Craftsman 24M

2362821 Male January 14 2024 RYKB 24M

SITZ RESILIENT 10208  
CONNEALY CRAFTSMAN  
BLACK CATHY OF CONANGA 8521

JPM WOODROW 3D  
JPM STYLISH LADY 467H  
JPM STYLISH LADY 16C

SITZ STELLAR 726D  
SITZ MISS BURGESS 1856  
CONNEALY NIOBRARA 5451  
BLACK CARLA OF CONANGA 450

S A V RESOURCE 1441  
W C C PRIMROSE S414  
DBRL TITAN 29X CAF  
GEIS STYLISH LADY 68'05

BW	ADJ 205D	ADJ 365D	EPDs	CE	BW	WW	YW	Milk
85	673	1032	EPDs	4	0.7	45	87	31

A Craftsman son with a bit of a twist with his hard-working dam being from the JPM herd. With a very usable birthweight and great lines this bull can work in your herd many ways.

Consigned by Ryker Berting

CALVING EASE ★★



RAVENWORTH CATTLE

Lot 18



Here is a bull we really admire for his overall look. Stylish and eye catching, 21M is a real smooth made sire with a great hind leg, good bone and very appealing muscle expression. Big scrotal adds to the CHARM of this herd bull.



Bubs Southern Charm - sire

**Lot 19** RAVENWORTH Southern Charm 21M  
2362781 Male January 12 2024 RAVE 21M

SILVEIRAS CONVERSION 8064  
BUBS SOUTHERN CHARM AA31  
HICKORY HILL ERICA 009

RAVENWORTH INNOVATION 33E  
RAVENWORTH 33E RUBY 38H  
RAVENWORTH RUBY 31E

BT CROSSOVER 758N  
EXG SARAS DREAM S609 R3  
CONNEALY STIMULUS 8419  
HICKORY HILL ERICA TA32

MAR INNOVATION 251  
RAVENWORTH RUBY 3U  
MOHNEN PULSE 533  
RAVENWORTH RUBY 32X

BW	ADJ 205D	ADJ 365D	EPDS	CE	BW	WW	YW	Milk
89	796	1216	1	1.9	57	99	26	

**Lot 20** RAVENWORTH Southern Charm 36M  
2362792 Male January 21 2024 RAVE 36M

SILVEIRAS CONVERSION 8064  
BUBS SOUTHERN CHARM AA31  
HICKORY HILL ERICA 009

CONNEALY THUNDER  
RAVENWORTH RUBY 23G  
LINWOOD RUBY 46T

BT CROSSOVER 758N  
EXG SARAS DREAM S609 R3  
CONNEALY STIMULUS 8419  
HICKORY HILL ERICA TA32

BALDRIDGE KABOOM K243  
PARKA OF CONANGA 241  
LINWOOD BRUNO 24R  
LINWOOD RUBY 14N

BW	ADJ 205D	ADJ 365D	EPDS	CE	BW	WW	YW	Milk
95	734	1069	3	1.7	48	84	27	

**TOP 15% SCORTAL**      **TOP 20% MILK**



Another extremely attractive son of Southern Charm. A great structured bull that gives you "THE LOOK" when you survey the pen. 36M is straight in his lines and stout in his appearance. His dam is a beautiful Connealy Thunder daughter that has an exceptional udder, great feet and an awesome disposition.



TOP 15% WW

TOP 20% YW

Eye catching and stylish this bull has a ton of presence. He has added frame and capacity. A beautiful BW with some top performance numbers. RAVE 18G dam has enormous capacity and a beautiful udder.

CALVING EASE ★



Ellingson Verified - sire



RAVENWORTH CATTLE

Lot 21

Lot 21

RAVENWORTH Verified 10M

2362772 Male January 04 2024 RAVE 10M

ELLINGSON AUTHORIZE 7057  
ELLINGSON VERIFIED  
EA ROSETTA 1127

CC CJ LOTTO 21E  
RAVENWORTH RUBY 18G  
RAVENWORTH RUBY 14E

BW	ADJ 205D	ADJ 365D	EPDs	CE	BW	WW	YW	Milk
86	783	1185		5	1.1	69	116	30

KOUPAL ADVANCE 28  
EA EMBLYNETTE 5169  
LT TERRITORY 5824 OF EA  
EA ROSETTA 8825

BSF HOT LOTTO 1401  
TLA BEAUTY 6R  
SITZ LOGIC Y46  
RAVENWORTH RUBY 18Y

Lot 22

RAVENWORTH Sterling 202M

2404805 Male January 08 2024 RAVE 202M

SITZ STELLAR 726D  
S A V STERLING 1766  
SA V POLLY 9744

S A V FOUR SEASONS 5231  
JL LADY 3059  
LADY OF PEAK DOT 779L

BW	ADJ 205D	ADJ 365D	EPDs	CE	BW	WW	YW	Milk
95	727	1159		-3.5	4.5	73	127	16

MOHNEN SUBSTANTIAL 272  
SITZ PRIDE 200B  
S A V GOVERNOR 6844  
S A V POLLY 7756

S A V 8180 TRAVELER 004  
S A V MAY 2397  
HF MOST WANTED 46H  
LADY OF PEAK DOT 331J

Here is the outcome of embryos we purchased from Rehorst Farms. A powerful sire with added muscle and mass. A big center of body adds to his overall dimension. A big hiped bull that stands on a great foot with added heel.



S A V Sterling 1766 - sire



RAVENWORTH CATTLE

Lot 22

TOP 30% WW



Ravenworth International 11J - sire

Lot **23** RAVENWORTH International 49M  
2362802 Male February 04 2024 RAVE 49M

DMM INTERNATIONAL 54D  
RAVENWORTH INTERNATIONAL 11J  
RAVENWORTH RUBY 6B

PAINTROCK TRAPPER  
RAVENWORTH ESTON ANNE 30J  
ROYAL ESTON ANNE 20X

S A V INTERNATIONAL 2020  
DMM BLACKBIRD 105A  
K C F BENNETT TOTAL  
RAVENWORTH RUBY 4W

PAINTROCK MOUNTAIN MAN  
EMULOUS OF PAINTROCK 93-9  
S A V BISMARCK 5682  
ROYAL ESTON ANNE 23N

BW	ADJ 205D	ADJ 365D	EPUS	CE	BW	WW	YW	Milk
95	807	1241		0	3.1	62	105	24

Lot **24** RAVENWORTH International 68M  
2362814 Male March 03 2024 RAVE 68M

DMM INTERNATIONAL 54D  
RAVENWORTH INTERNATIONAL 11J  
RAVENWORTH RUBY 6B

PAINTROCK TRAPPER  
RAVENWORTH ELBA 3H  
RAVENWORTH 29D ELBA 27F

S A V INTERNATIONAL 2020  
DMM BLACKBIRD 105A  
K C F BENNETT TOTAL  
RAVENWORTH RUBY 4W

PAINTROCK MOUNTAIN MAN  
EMULOUS OF PAINTROCK 93-9  
ROYAL S YELLOWSTONE 29D  
RAVENWORTH 68Z ELBA 19C

BW	ADJ 205D	ADJ 365D	EPUS	CE	BW	WW	YW	Milk
104	751	1190		-4	4.5	57	101	28



In 2022, we sold a half share of RAVE 11J to Wooden Spoke. In the spring of '23 we used him on a group of cows. 2 Trapper daughters were bred to him, this mating really clicked. 49M and 68M are 3/4 sibs that are very similar in type. Long spined and straight topped, they both have attractive phenotypes that demand a second look upon inspection of the bull pen. Bold sprung and big topped gives these bulls added dimension. We are pretty excited about 11J offspring at Ravenworth.

TOP 10% WW

TOP 15% YW

Huge performance with a ADJ WW of 860 lbs, if you are looking to sell calves in the fall here is a bull that can maximize that timeline. A long spined bull who is bold sprung and soft made, the kind that adds pounds easily.

Consigned by Ryker Bering



Lot **25** RAVENWORTH International 64M  
2362823 Male February 25 2024 RYKB 64M

DMM INTERNATIONAL 54D  
RAVENWORTH INTERNATIONAL 11J  
RAVENWORTH RUBY 6B

CCCJ LOTTO 21E  
RAVENWORTH RUBY 45J  
RAVENWORTH RUBY 14F

BW	ADJ 205D	ADJ 365D	EPlus	CE	BW	WW	YW	Milk
104	860	1268		-8	5.6	71	120	29

S A V INTERNATIONAL 2020  
DMM BLACKBIRD 105A  
K C F BENNETT TOTAL  
RAVENWORTH RUBY 4W

BSF HOT LOTTO 1401  
TLA BEAUTY 6R  
S A V INTERNATIONAL 2020  
RAVENWORTH RUBY 2Y

Lot **26** RAVENWORTH International 66M  
2362812 Male February 29 2024 RAVE 66M

DMM INTERNATIONAL 54D  
RAVENWORTH INTERNATIONAL 11J  
RAVENWORTH RUBY 6B

SOO LINE MOTIVE 2068  
RAVENWORTH RUBY 37G  
RAVENWORTH RUBY 4W

BW	ADJ 205D	ADJ 365D	EPlus	CE	BW	WW	YW	Milk
88	713	1080		1	1.4	42	72	24

S A V INTERNATIONAL 2020  
DMM BLACKBIRD 105A  
K C F BENNETT TOTAL  
RAVENWORTH RUBY 4W

SOO LINE MOTIVE 9016  
SOO LINE BLACK LADY 8289  
LINWOOD LAD 18R  
RAVENWORTH RUBY 2S

Here is another bull sired by 11J. Same big top and straight lines as all his calves.

CALVING EASE ★★





An embryo acquired from Six Mile. A calving ease sire that is backed by Showman, a high-profile sire with many progenies registered in Canada.

**CALVING EASE ★★★**



Schieffelbein Showman 338 - sire

**Lot 27** RAVENWORTH **Showman** 201M  
2404804 Male January 02 2024 RAVE 201M

SCHIEFFELBEIN ATTRACTIVE 4565  
**SCHIEFFELBEIN SHOWMAN 338**  
FROSTY ELBA 3745

JMB TRACTION 292  
FROSTY ANSWER 3979  
S A V RENOWN 3439  
FROSTY UPWARD 1100

SANKEYS LAZER 609 OF 6N  
SANKEYS ERICA 525  
S A V PREFERENCE 9184  
LASSIE OF PEAK DOT 703T

BW	ADJ 205D	ADJ 365D	EPDs	CE	BW	WW	YW	Milk
75	584	1052		3.5	2.1	72	135	28

**Lot 28** RAVENWORTH **Tribute** 203M  
2404806 Male January 10 2024 RAVE 203M

MC CUMBER TREMENDOUS 2008  
**MC CUMBER TRIBUTE 702**  
LASSIE 113 OF MC CUMBER

O C C TREMENDOUS 619T  
MISS WIX 2022 HC MC CUMBER  
O C C MISSING LINK 830M  
LASSIE 935 OF MC CUMBER

SANKEYS LAZER 609 OF 6N  
SANKEYS ERICA 525  
S A V PREFERENCE 9184  
LASSIE OF PEAK DOT 703T

BW	ADJ 205D	ADJ 365D	EPDs	CE	BW	WW	YW	Milk
85	711	1108		6	1.3	60	110	27



We were fortunate to acquire these embryos from Six Mile Angus from the Six Mile Lassie 260B, a powerful, balanced female flushed to two different bulls. Sired by the Tribute this bull has calving ease built in.

**CALVING EASE ★★**



McCumber Tribute 702 - sire

# TOP 20% BW

50M stems from a great cow line. His dam did an excellent job on her first calf, boasting a 803lb ww. A good growthy bull with some added length and neck extension.

## CALVING EASE ★★



K-Cow Jack Hammer 97J - sire



**RAVENWORTH**  
CATTLE

Lot **29**

Lot **29**

2362803 Male February 06 2024 RAVE 50M

RAVENWORTH Jack 50M

K-COW MT. EVEREST 100E  
K-COW JACK HAMMER 97J  
K-COW SWEETIE 97E

SITZ ALPINE 11076  
RAVENWORTH RUBY 49K  
RAVENWORTH RUBY 15A

BW	ADJ 205D	ADJ 365D	EPDs	CE	BW	WW	YW	Milk
80	803	1249		4	0.5	51	92	22

K-COW CANYON 111C  
DURALTA 4097 TIBBIE 100C  
PM LIFE'S A DANCE 59'15  
RAVENWORTH RUBY 11C

KM BROKEN BOW 002  
SITZ ELLUNAS ELITE 1874  
THOMAS POWDER RIVER 9053  
LINWOOD RUBY 36U

Lot **30**

2362815 Male March 05 2024 RAVE 70M

RAVENWORTH Jack 70M

K-COW MT. EVEREST 100E  
K-COW JACK HAMMER 97J  
K-COW SWEETIE 97E

RAVENWORTH REIGN 8G  
RAVENWORTH RUBY 5J  
RAVENWORTH RUBY 18G

BW	ADJ 205D	ADJ 365D	EPDs	CE	BW	WW	YW	Milk
110	793	1225		-8	5.2	55	101	21

K-COW CANYON 111C  
DURALTA 4097 TIBBIE 100C  
PM LIFE'S A DANCE 59'15  
RAVENWORTH RUBY 11C

S A V REIGN 6845  
ROYAL S PRIDE DOLLY 3B  
CCCJ LOTTO 21E  
RAVENWORTH RUBY 14E

If you are looking to add some punch to your calves, look no further. A big middled, deep quartered bull with added bone and mass. 70M offers a very proud look in a stout frame.



**RAVENWORTH**  
CATTLE

Lot **30**

TOP 15% CE

TOP 20% WW

TOP 20% MILK



Elegant is a word that comes to mind when you examine this breeding female. Her dam, 6J is a fancy, moderate female that is easy fleshing. We retained her full sister 15L, therefore allowing us to put 34M up for grabs. A soft made female that possess a tremendous amount of volume and eye appeal. The Stellar daughters we have in our herd are highly functional females that raise big calves, maintain condition and breed back easily. An easy find sale day!!!

Lot 31

RAVENWORTH Ruby 34M

2362790 Female January 18 2024 RAVE 34M

MOHNEN SUBSTANTIAL 272  
SITZ STELLAR 726D  
SITZ PRIDE 200B

SITZ ALPINE 11076  
RAVENWORTH RUBY 6J  
RAVENWORTH RUBY 46G

BENFIELD SUBSTANCE 8506  
MOHNEN GLYN MAWR ELBA 1758  
CONNEALY FINAL PRODUCT  
SITZ PRIDE 308Y

KM BROKEN BOW 002  
SITZ ELLUNAS ELITE 1874  
CCCJ LOTTO 21E  
RAVENWORTH 68Z RUBY 12C

BW	ADJ 205D	ADJ 365D	EPDs	CE	BW	WW	YW	Milk
86	659	846		0.5	0.6	61	108	22

Lot 32

RAVENWORTH Ruby 33M

2362789 Female January 18 2024 RAVE 33M

SITZ STELLAR 726D  
SITZ RESILIENT 1020B  
SITZ MISS BURGESS 1856

EATHINGTON SUB-ZERO  
RAVENWORTH RUBY 5G  
RAVENWORTH RUBY 28E

MOHNEN SUBSTANTIAL 272  
SITZ PRIDE 200B  
SITZ TOP GAME 561X  
SITZ MISS BURGESS 438I

CONNEALY CAPITALIST 028  
KP MISS PROVEN QUEEN 21  
MUSGRAVE FOUNDATION  
RAVENWORTH RUBY 2W

BW	ADJ 205D	ADJ 365D	EPDs	CE	BW	WW	YW	Milk
84	677	896		7	-0.1	65	115	27

TOP 15% BW

TOP 20% WW

TOP 20% MILK



Quality runs deep with this offering. 33M comes from a productive cow family that are big bodied, great footed with excellent udders and teat size. 5G dam, a Sub-Zero daughter and 28E, grand dam and donor a Musgrave Foundation daughter offer up a stacked pedigree. There is few great daughters from this cow line producing in our herd.

Here is an opportunity to be first in line to own a Craftsman daughter. Backed by a powerful, highly maternal cow family, 28M is sure to rise to the top. A big growthy female that is angular in design. A great future lies ahead for this heifer and her new owner.



Lot **33**

2362785 Female

RAVENWORTH **Ruby** 28M

January 15 2024 RAVE 28M

SITZ RESILIENT 10208  
**CONNELLY CRAFTSMAN**  
 BLACK CATHY OF CONANGA 8521

SOO LINE MOTIVE 2068  
**RAVENWORTH 68Z RUBY 30D**  
 RAVENWORTH RUBY 32X

SITZ STELLAR 726D  
 SITZ MISS BURGESS 1856  
 CONNEALY NIOBRARA 5451  
 BLACK CARLA OF CONANGA 450

SOO LINE MOTIVE 9016  
 SOO LINE BLACK LADY 8289  
 RAVENWORTH LAD 6U  
 LINWOOD RUBY 19T

BW	ADJ 205D	ADJ 365D	EPDs	CE	BW	WW	YW	Milk
95	687	876		-6	3.9	61	106	32

This winter we calved a few 11J daughters. They are beautiful uddered with great dispositions. Highly maternal females that will raise a calf. 42M is no exception. Like most 11J offspring she is long spined, big topped, and wide pinned. A neat mating of 11J and 87J, a direct Bravo, has created an extremely attractive female.

Consigned by Grayson Berting

Lot **34**

2368692 Female

RAVENWORTH **Neonia** 42M

January 24 2024 LILG 42M

DMM INTERNATIONAL 54D  
**RAVENWORTH INTERNATIONAL 11J**  
 RAVENWORTH RUBY 6B

COLEMAN BRAVO 6313  
**EDWARDS NEONIA 87J**  
 EDWARDS NEONIA 87Y

S A V INTERNATIONAL 2020  
 DMM BLACKBIRD 105A  
 K C F BENNETT TOTAL  
 RAVENWORTH RUBY 4W

COLEMAN CHARLO 0256  
 COLEMAN DONNA 714  
 S A V HEAVY HITTER 6347  
 HAPPYVALE NEONIA 87K

BW	ADJ 205D	ADJ 365D	EPDs	CE	BW	WW	YW	Milk
76	583	793		7	1.3	49	83	26



Barrett, Shelby & Leena  
St Brieux, SK  
Barrett 306 260 8717  
Shelby 306 281 3729



Firstly, we would like to welcome and thank everyone for taking the time to show interest in our program. Last year was our very first time in a live format bull sale and it was met with loads of support making it a huge success. The combination of positive feedback and inquiries about the display we had on the Sask Angus Pasture Tour, and a successful fall show/sale season is definitely reassuring and tells us our program is continuing in the right direction. This years offering consists of a wide variety of sires backed by our most predominant cow families. In addition this year we will be offering limited semen packages on our newly acquired herd sire whom has already turned some heads and hung a few banners this past fall. As always visitors are welcome anytime and we look forward to seeing everyone at the sale.

*Elldem Cattle Investments*



Lot **35**

2366788 Male January 07 2024 TWOB 408M

ELLDDEM 9213 **Excite** 408M

CONLEY EXPRESS 7211  
CONLEY EXPRESSION 9213  
DOUBLE R BAR PURE PRIDE Z246

SMA WATCHOUT 482  
DPL SANDY 3040  
P R BLACK FRIDAY 0244  
BOHI PURE PRIDE 6096

NORTHERN VIEW NETWORTH 124A  
NORTHERN VIEW MAXINE 10C  
NORTHERN VIEW MAXINE 20T

NORTHERN VIEW NET WORTH 104Y  
NORTHERN VIEW PRIDE 8Y  
DOUBLE D SMOKIE 21R  
NORTHERN VIEW MAXINE 18P

BW	ADJ 205D	ADJ 365D	EPDs	BW	WW	YW	MCE	Milk
90	678	1249	4.3	50	85	2	17	

A herd bull sale feature right here! To say we are excited about his guy would be an understatement. One that sort of strikes you from every angle. He's nice shouldered, massive hiped and long sided which carries down to an excellent foot with ample bone. We campaigned him this past year with great success being named Champion Bull Calf PAEX, Senior Calf Champion Lloyd Stockade, and 2nd in class at CWA.





A paternal sib to our show bull sharing many of the same qualities. A very usable and unique pedigree on the bottom side stemming back to the well known Royal Angus cow herd. A maternal sister sold in last year's event to TINY Angus.



Maternal sister sold to TINY Angus



Lot **36**

Lot **36** ELLDEM **Expression** 411M  
2366838 Male January 21 2024 TWOB 411M

CONLEY EXPRESS 7211  
CONLEY EXPRESSION 9213  
DOUBLE R BAR PURE PRIDE Z246

BOSS LAKE BONAFIDE 722E  
ELLDEM ROYAL ESTON ANNE 127J  
ROYAL S ESTON ANNE 9C

SMA WATCHOUT 482  
DPL SANDY 3040  
P R BLACK FRIDAY 0244  
BOHI PURE PRIDE 6096

S A V PEDIGREE 4834  
HF ECHO 206Y  
SOO LINE YELLOWSTONE 9286  
ROYAL ESTON ANNE 40W

BW	ADJ 205D	ADJ 365D	EPDs	BW	WW	YW	MCE	Milk
92	556	1050	EPDs	5	65	104	-2	22

Lot **37** ELLDEM **Attracion** 405M  
2366799 Male January 04 2024 TWOB 405M

JMB TRACTION 292  
SCHIEFELBEIN ATTRACTIVE 4565  
FROSTY ANSWER 3979

GCC BUSINESS ELITE M1F  
ELLDEM 309 BLACKBIRD 803E  
JUSTAMERE 0562 BLACKBIRD 337Z

SITZ TOP GAME 561X  
JMB EMULOTA 013  
S A V FINAL ANSWER 0035  
FROSTY ELBA LIZZY 1106

DAMERON FIRST CLASS  
J&J QUEEN 414  
EXAR UPSHOT 0562B  
JUSTAMERE 253 BLACKBIRD 566U

BW	ADJ 205D	ADJ 365D	EPDs	BW	WW	YW	MCE	Milk
84	624	1214	EPDs	1.9	66	119	1	20

Our only bull in the sale from the tried and true Schiefelbein Attractive. Here's a real growthy, neat looking type of bull coming from a great cow family. With a moderate birthweight he makes an excellent choice to use on both cow or heifers.



Lot **37**



Lot **38**

ELLD**EM** Craftsman 420M

2366854 Male February 04 2024 TWOB 420M

SITZ RESILIENT 10208  
**CONNEALY CRAFTSMAN**  
 BLACK CATHY OF CONANGA 8521

SITZ STELLAR 726D  
 SITZ MISS BURGESS 1856  
 CONNEALY NIOBRARA 5451  
 BLACK CARLA OF CONANGA 450

HILL VALLEY RECKONING 931  
**ELLD**EM** 931 BLACKBIRD 234K**  
 JUSTAMERE 0562 BLACKBIRD 337Z

YOUNG DALE BELIEVE 46B  
 HILL VALLEY ELBINA 456  
 EXAR UPSHOT 0562B  
 JUSTAMERE 253 BLACKBIRD 566U

As far as pedigrees go this one is pretty easy to follow and packs some of the hottest, most relevant sires in the Angus deal. Long spined, smooth muscled kind of a bull with a nice robust frame size. Hard to believe with this much growth and punch that he's off a first calf heifer coming unassisted at 86 lbs.

BW	ADJ 205D	ADJ 365D	EPDs	BW	WW	YW	MCE	Milk
86	667	1211		3.9	70	121	-2	26



Hill Valley Reckoning 931



Connealy Craftsman - sire of lots 38 and 39



Lot **39**

ELLDem **Operative** 413M

2366817 Male January 24 2024 TWOB 413M

SITZ RESILIENT 10208  
**CONNEALY CRAFTSMAN**  
 BLACK CATHY OF CONANGA 8521

SITZ STELLAR 726D  
 SITZ MISS BURGESS 1856  
 CONNEALY NIOBRARA 5451  
 BLACK CARLA OF CONANGA 450

ELLDem 2353 CHEAP THRILLS 704D  
**ELLDem 704 RUBY 34G**  
 RUNNING STEADY RUBY 52C

SILVEIRAS S SIS GQ 2353  
 JUSTAMERE 0562 BLACKBIRD 337Z  
 SANKEYS JUSTIFIED 101  
 WEST COWAN RUBY 58Z

Craftsman was a new sire we incorporated in with high expectations, and I'd say this mating clicked. Loaded with muscle yet remaining stylish truly makes him an easy one to look at. He was a fan favourite on the Angus Summer Tour and from there he was developed all fall in the show pen but at the last minute we left him at home for no fault of his own.

BW	ADJ 205D	ADJ 365D	EPDs	BW	WW	YW	MCE	Milk
86	749	1188		1.7	58	104	3	28



Elldem 704 Ruby 34G dam as calf



A bull we are really high on as he combines two of our most influential cow families. The Swan and Glamour family have been major building blocks here since the beginning, on top of them you will notice sires like Hill Valley Reckoning, Halls Frank and PVF Windfall whom has proven to work time and time again.



Elldem Reckoning 232K- sire

**Lot 40**

ELLD 232 **Reckon** 407M

Pending Male January 5 2024 TWOB 407M

HILL VALLEY RECKONING 931  
**ELLD 232K**  
 ELLD 9005 SWAN 918F

YOUNG DALE BELIEVE 46B  
 HILL VALLEY ELBINA 456  
 PVF WINDFALL SCC 9005  
 JUSTAMERE 1036 SWAN 751W

HALL'S FRANK 683F  
**ELLD 683 GLAMOUR 16H**  
 ELLD 2353 GLAMOUR 917F

NORTHLINE COOL CAT 76B  
 HALL'S TIBBIE 683D  
 SILVEIRAS S SIS GQ 2353  
 ELLD 438 GLAMOUR 614C

PE	BW	ADJ 205D	ADJ 365D	EPDs	BW	WW	YW	MCE	Milk
	88	704	1207		3.6	57	100	4.5	19

**Lot 41**

ELLD **Reckoning** 422M

Pending Male February 5 2024 TWOB 422M

YOUNG DALE BELIEVE 46B  
**HILL VALLEY RECKONING 931**  
 HILL VALLEY ELBINA 456

YOUNG DALE XCALIBER 32X  
 YOUNG DALE GRACE 126Z  
 MILL COULEE UPWARD 005  
 HILL VALLEY ELBINA 928

JUSTAMERE 1728 FIRE WATER 438A  
**ELLD 438 BLACKBIRD 607C**  
 JUSTAMERE 0562 BLACKBIRD 337Z

EXAR UPWARD 1728B  
 JUSTAMERE 406S CARLA 898W  
 EXAR UPSHOT 0562B  
 JUSTAMERE 253 BLACKBIRD 566U

PE	BW	ADJ 205D	ADJ 365D	EPDs	BW	WW	YW	MCE	Milk
	80	575	1087		3.8	62	110	1	19



Another successful flush mating with this Reckoning x Blackbird combo. We sold a full sib in last years sale and the calf reports are still forthcoming with much anticipation. Truly a remarkable breeding piece here that has a very usable moderate birthweight.



Full sibling 327L sold to JXW Ranch



Lot **42**

ELLDEM Coalfields 421M

2366798 Male February 04 2024 TWOB 421M

ELLINGSON THREE RIVERS 8062  
 MICH WHEATLAND COALFIELDS2177K  
 HOFFMAN PEG 9482

SILVEIRAS S SIS GQ 2353  
 ELLDEM 2353 FLORA 710D  
 FREYBURN FLORA 4P

ELLINGSON HOMESTEAD 6030  
 EA EMBLYNETTE 6279  
 PLUM CREEK REFRESH 461A  
 ECR 2604 PEG 4144

SILVEIRAS STYLE 9303  
 K N C CABIN CREEK SANDY 804  
 CUDLOBE YELLOWSTONE 18M  
 FREYBURN KRISTINA 13G

The only son of the 2024 National Champion Angus Bull Coalfields in the offering! We are super pleased with how he worked on his rookie year and have more hitting the ground already here in 2025. A very proud individual we find that has loads of Angus character, a huge centre body with added natural muscle.

BW	ADJ 205D	ADJ 365D	EPDs	BW	WW	YW	MCE	Milk
84	564	1007		3.6	56	96	7	20



Elldem Reckoning 323L - maternal brother  
 Sold to Blake Wilson



**Lot 43**

A very unique pedigree on this E.T. calf. A few years back we sought out to find a rare high phenotype bull to use in our flush program. We feel this Express x Upshot combination was an excellent mating giving us that extra pop, extra hair and extra look, but remains sound structured with high maternal qualities.



Conley Express 7211

**Lot 43** ELLDEM Express 418M  
 Pending Male February 1 2024 TWOB 418M

- SMA WATCHOUT 482
- CONLEY EXPRESS 7211
- DPL SANDY 3040
- EXAR UPSHOT 0562B
- JUSTAMERE 0562 BLACKBIRD 337Z
- JUSTAMERE 253 BLACKBIRD 566U
- SILVEIRAS WATCHOUT 0514
- 2K BEAUTY 961
- SILVEIRAS STYLE 9303
- K N C CABIN CREEK SANDY 804
- SITZ UPWARD 307R
- EXAR BARBARA T020
- EXAR MASTER 253
- RR BLACKBIRD 1955

PE	BW	ADJ 205D	ADJ 365D	EPDs	BW	WW	YW	MCE	Milk
	90	570	1100		3.3	56	96	-0.5	22

**Lot 44** ELLDEM Rave 434M  
 2366781 Male March 10 2024 TWOB 434M

- RAVENWORTH REIGN 8G
- RAVENWORTH REIGN 14J
- RAVENWORTH RUBY 15G
- EXAR UPSHOT 0562B
- JUSTAMERE 0562 BLACKBIRD 337Z
- JUSTAMERE 253 BLACKBIRD 566U
- S A V REIGN 6845
- ROYAL S PRIDE DOLLY 3B
- CCCJ LOTTO 21E
- RAVENWORTH 68Z RUBY 26C
- SITZ UPWARD 307R
- EXAR BARBARA T020
- EXAR MASTER 253
- RR BLACKBIRD 1955

BW	ADJ 205D	ADJ 365D	EPDs	BW	WW	YW	MCE	Milk
78	498	1047		0.7	46	83	3	24



**Lot 44**

Just a March baby here but by no means is he behind in any way. This would be a natural calf off our Upshot donor female and one we really admired all summer long. He's comes to us with a heifer friendly birth weight. One that's gonna leave you with a group of real nice maternal females but deliver a punch selling cattle by weight.



320L - maternal sister to lot 43 & 44

# Canadian Qualified Semen



**Lot 45**

Lot **45A** 1 package 10 straws    Lot **45B** 1 package 10 straws  
 Lot **45C** 1 package 10 straws    Lot **45D** 1 package 10 straws  
 Lot **45E** 1 package 10 straws

**Lot 45**

NLF **Sunday Sinner** 404M

2375969 Male March 15 2024 DAVE 404M

PVF **BLACKLIST** 7077  
 PVF **MARVEL** 9185  
 PVF **MISSIE** 5245

PVF **INSIGHT** 0129  
 PVF **BLACKBIRD** 3070  
 C&C **MCKINLEY** 3000 EXAR  
 PVF **MISSIE** 0084

**NOBLE ACRES CASANOVA** 3J  
 NLF **CRUEL GIRL** 008H  
 NLF **CRUEL GIRL** 923F

**LEACHMAN SAUGAHATCHEE** 3000C  
**STRATHMORE** APRIL 3A  
**NORTHLINE SI FI** 776C  
**NORTHLINE CRUEL GIRL** 923B

BW	ADJ 205D	ADJ 365D	EPDs	BW	WW	YW	MCE	Milk
83	717	1446		3	52	86	1.5	23



NLF Cruel Girl 108J- dam maternal sister



404M - Farmfair 2024

This past summer we were presented with an opportunity to jump into a partnership on what we feel is going to be an integral piece of the breeding puzzle for us here at Elldem. Both ourselves and the folks at Northline are proud to offer up some exclusive semen packs on a bull that we are positive will leave a lasting mark in the Angus breed. For such a young calf he was admired by many who saw him on the 2024 show road. He was named National Junior Division Bull Calf at Farm Fair, and then later in the week was given the honours of Reserve Purebred Breeding Animal in the junior show. This particular feat being the first ever for a bull to accomplish. The Marvel X Cruel girl combo completes a neat look adding together both power and presence. He moves like a cat and boosts a near perfect leg set with an impeccable foot size and foot shape. Study this ones pedigree further and see Saughatchee 3000 whom is known to be the ultimate female maker. We are darn excited about this ones future and plan to continue campaigning him this upcoming show season.

**Consigned by Elldem Cattle & Northline Farms**  
**Additional info contact**  
**Dave Schneider @ 780 619 1480**



Big time breeding potential here. One we have been super fond of all year. She was a standout alongside her GQ dam on the Sask Angus Tour and on the short list for the show team this past fall. Her attractive skull and neck extension are just some of the things we admire. Add those with her length of spine and overall elegant look we think she can be one to raise em right.



Elldem Glamour 236K - maternal sibling

Lot **46**

ELLD<sup>EM</sup> Glamour 403M

2366808 Female January 04 2024 TWOB 403M

RAVENWORTH REIGN 8G  
RAVENWORTH REIGN 14J  
RAVENWORTH RUBY 15G

S A V REIGN 6845  
ROYAL S PRIDE DOLLY 3B  
CCCJ LOTTO 21E  
RAVENWORTH 68Z RUBY 26C

SILVEIRAS S SIS GQ 2353  
ELLD<sup>EM</sup> 2353 GLAMOUR 917F  
ELLD<sup>EM</sup> 438 GLAMOUR 614C

SILVEIRAS STYLE 9303  
K N C CABIN CREEK SANDY 804  
JUSTAMERE 1728 FIRE WATER 438A  
JUSTAMERE 234R GLAMOUR 756W

BW	ADJ 205D	ADJ 365D	EPDs	BW	WW	YW	MCE	Milk
70	601	843		1.1	48	84	6	22

Lot **47**

ELLD<sup>EM</sup> Royal Anne 426M

2366853 Female February 12 2024 TWOB 426M

RAVENWORTH REIGN 8G  
RAVENWORTH REIGN 14J  
RAVENWORTH RUBY 15G

S A V REIGN 6845  
ROYAL S PRIDE DOLLY 3B  
CCCJ LOTTO 21E  
RAVENWORTH 68Z RUBY 26C

S A V BLOODLINE 9578  
ELLD<sup>EM</sup> ROYAL ANNE 227K  
ROYAL S ESTON ANNE 9C

S A V RAINFALL 6846  
S A V EMBLYNETTE 2369  
SOO LINE YELLOWSTONE 9286  
ROYAL ESTON ANNE 40W

BW	ADJ 205D	ADJ 365D	EPDs	BW	WW	YW	MCE	Milk
60	603	877		1.5	53	93	5	26



Off a first calf Bloodline heifer we think this one has loads of potential. A nice and easy to look at female that could fit into most breeding programs. This is another one we have on partnership with our good friend Mel Sisson of Royal Angus.



Eston Anne 30g - maternal sibling



There might not be too many more chances to grab hold of some rookie year progeny from the 2024 National Champion Bull. A heifer we find has a lot to offer over and above her exciting fresh pedigree. On her profile she strikes you with a nice long body, carried with an ideal foot shape and leg set. Top all that off with a real sweetheart demeanour.



Coalfields 2177K



Lot 48

Lot 48

2366810 Female February 09 2024 TWOB 424M

ELLINGSON THREE RIVERS 8062  
MICH WHEATLAND COALFIELDS2177K  
HOFFMAN PEG 9482

PVF WINDFALL SCC 9005  
ELLDem 9005 SWAN 918F  
JUSTAMERE 1036 SWAN 751W

BW	ADJ 205D	ADJ 365D	EPDs	BW	WW	YW	MCE	Milk
84	571	813		5.2	57	103	4	24

The Maxine cow family has been our go-to for creating real powerful and growthy breeding cattle. Combine these qualities with a higher phenotype mating and this will be the result. One we really like to look at with ample femininity and style but keeping it real world with some extra punch and base width.

ELLDem Swan 424M

ELLINGSON HOMESTEAD 6030  
EA EMBLYNETTE 6279  
PLUM CREEK REFRESH 461A  
ECR 2604 PEG 4144  
PVF ALL PAYDAY 729  
DAMERON PVF PROVEN QUEEN 010  
EXAR KING 1036  
ENNS LEAD SWAN 14R

Lot 49

2366821 Female January 03 2024 TWOB 402M

CASINO BOMBER N33  
EXAR GRENADE 9152B  
EXAR MERLE 7441

DAMERON C-5 AMERICAN CLASSIC  
ELLDem MAXINE 1H  
NORTHERN VIEW MAXINE 10C

BW	ADJ 205D	ADJ 365D	EPDs	BW	WW	YW	MCE	Milk
70	580	859		1.6	67	118	10	24

ELLDem Maxine 402M

KM BROKEN BOW 002  
CASINO ANNIE K48  
SITZ TOP GAME 561X  
EXAR MERLE 2550  
EXG RS FIRST RATE S903 R3  
DAMERON NORTHERN MISS 3114  
NORTHERN VIEW NETWORK 124A  
NORTHERN VIEW MAXINE 20T



Lot 49



Tony, Tammy, Colton and Logan Freemark  
 208 Woolf Place  
 Saskatoon, SK S7W 1E6  
 Tony: 306-830-8239 Tammy: 306-830-8787  
 colganscattle@sasktel.net  
 www.colganscattle.com



How lucky we are to have something that makes saying goodbye so hard!! This past show season was filled with laughs, tears and memories that we will cherish forever. CWA 2024 will hold a special place in our hearts as this was our last show as an exhibitor and where our dreams as a breeder became reality. Our successes over the years could not have been achieved without each and everyone of you that have impacted our program or touched our lives. For that we are forever grateful!

*Colgan's Cattle Company*



lot **50**

lot **50**

COLGAN'S **Magnum** 127M

CAN20392-PB Male 12/2/2024 CCCC 127M

GREENWOOD HEADLINER 71H  
 COLGAN'S KINGSMAN 01K  
 KFC HEATHER 38H

COLGAN'S GENERAL 20G  
 COLGAN'S KISS AND TELL 27K  
 SPOTS 'N SPROUTS EMMA 1E

CAJA ZEPPELIN 1B  
 WREN OF P.A.R. 70E  
 PICK-IT DYNAMITE 2D  
 WRANGLER MS ESSENCE 10F

COLGAN'S BAXTER 1B  
 CODIAK URE IT GNK 48U  
 SPOTS 'N SPROUTS BRAVO 118B  
 SPOTS 'N SPROUTS 1B

BW	ADJ 205D	ADJ 365D	Myostatin	Coat Colour	Polled
84	815	1295	Non-Carrier	ED/ED	P/P

Packed with muscle, shape, and eye appeal, CCCC 127M is the kind that stands out for all the right reasons. He's built with power from the ground up, with a big hip, stout top, and the depth to add substance to a program. A real-world bull that balances performance and style—one worth a second look!

This guy carries a championship pedigree! Shown alongside his legendary dam, Colgan's Kiss and Tell 27K, this pair went undefeated all fall, claiming Grand Champion Speckle Park Female titles at Manitoba Ag Ex, Farmfair International, and Canadian Western Agribition. With a powerhouse build and a pedigree backed by champions, Magnum 127M is one that's built to make an impact!

The definition of a “meat and potatoes” kind of bull! He’s got the power, the hip, and the middle to make an impact. Sired by KFC Kryptonite and backed by Codiak Putnam on the bottom side—if you’ve followed this breed for a while, you know what kind of quality comes with Putnam in the pedigree. A real-deal performance bull built to add substance and style to your program!



KFC Kryptonite 27K - sire



lot **51**

lot **51**

COLGAN'S **McCoy** 08M

CAN19685-PB Male 19/1/2024 CCCC 08M

US SCC SMOKEEM 7H  
KFC **KRYPTONITE 27K**  
KFC FROSTBITE 680F

COLGAN'S EXCALIBUR 23E  
COLGAN'S **GENIE 34G**  
COLGAN'S DORA LF 36D

RIVER HILL SMOKESHACK 252E  
DORIS OF UNEEDA 151D  
SPOTS 'N SPROUTS BART 110B  
STAR BANK THETA 42T

CODIAK PUTNAM GNK 61Y  
CODIAK URE IT GNK 48U  
COLGAN'S BARNABY 3B  
CODIAK WILD LADY GNK 46W

BW	ADJ 205D	ADJ 365D	Myostatin	Coat Colour	Polled
82	601	1020	Non-Carrier	ED/ED	P/H

lot **52**

COLGAN'S **Lazar Maverick** 09M

CAN21704-PB Male 19/1/2024 CCLL 09M

COLGAN'S BAXTER 1B  
COLGAN'S **GENERAL 20G**  
CODIAK URE IT GNK 48U

WOLF LAKE FIELD READY 52F  
WOLF LAKE **IDA 4J**  
CODIAK IDA GNK 33Z

MOOVIN ZPOTZ CAMARO 6X  
MOOVIN ZPOTZ ROXY AMBER 4R  
CODIAK KOSMO GNK 17R  
NORALTA HALETTE 11H

RIVER HILL 26T YAGER 99Y  
NOTTA PHO-FINISH 54P  
CODIAK CRIKEY GNK 13U  
STYALS MISS LIGHTNING 16M

BW	ADJ 205D	ADJ 365D	Myostatin	Coat Colour	Polled
82	644	1029	1, nt821	ED/e	P/P

If you're in the market for a moderate-framed, well-balanced bull with plenty of rib and middle, CCCC 09M is one to mark in your catalog. Sired by Colgan's General 20G and out of Wolf Lake Ida 4J, this bull combines a sound structure with the kind of depth and dimension that will add pounds to your calf crop.

Owned with Lazar Livestock Ltd.



Wolf Lake Ida 4J - dam



lot **52**



A powerhouse in the making, Colgan's Mezcal 12M is a deep-bodied, high-capacity bull with the kind of hip, front-end presence, and eye appeal that will grab attention in any pen. Sired by Colgan's General 20G, he brings proven genetics backed by muscle expression, structural soundness, and the ability to add pounds to your calf crop. If you're looking for a herd sire that offers style without sacrificing function, 12M is a strong candidate.



Colgan's Baxter 1B - grand sire

**Lot 53**

COLGAN'S **Mezcal** 12M

CAN21699-PB Male 21/1/2024 CCCC 12M

COLGAN'S BAXTER 1B  
COLGAN'S GENERAL 20G  
CODIAK URE IT GNK 48U

MOOVIN ZPOTZ CAMARO 6X  
MOOVIN ZPOTZ ROXY AMBER 4R  
CODIAK KOSMO GNK 17R  
NORALTA HALETTE 11H

RAVENWORTH NAVIGATOR 15Z  
RAVENWORTH AURORA 126E  
RAVENWORTH AURORA 4X

A & W 15R  
STAR BANK URANIA 85U  
NOTTA ROMEO 64R  
STAR BANK 66N

BW	ADJ 205D	ADJ 365D	Myostatin	Coat Colour	Polled
86	613	1012	Non-Carrier	ED/ED	P/P

**Lot 54**

COLGAN'S **Monterey** 17M

CAN21700-PB Male 23/1/2024 CCCC 17M

MX EL GUAPO 103E  
HERCULES OF P.A.R. 58H  
ESCORT COVERGIRL OF P.A.R. 57E

P.A.R. CASANOVA 55C  
HIGH MAINTENANCE OF MX 103Z  
COLGAN'S CASPIAN 10C  
COVER GIRL OF P.A.R. 57C

COLGAN'S BAXTER 1B  
COLGAN'S GALAXINA 28G  
COLGAN'S CALLIE CF 03C

MOOVIN ZPOTZ CAMARO 6X  
MOOVIN ZPOTZ ROXY AMBER 4R  
CODIAK TYCOON CAT GNK 12Z  
COLD CREEK WISTERIA 62W

BW	ADJ 205D	ADJ 365D	Myostatin	Coat Colour	Polled
81	668	1138	Non-Carrier	ED/ED	P/P



Colgan's Monterey 17M is a long-bodied, well-balanced black bull that combines power with structural integrity. Sired by Hercules of P.A.R. 58H and backed by Colgan's Baxter on the bottom side, this bull brings a strong genetic package built for growth and efficiency. His extra length translates into added pay weight, while his depth and muscle expression ensure he'll sire functional, productive calves. If you're after a bull that will add length, this is the bull for you.



Hercules of P.A.R. 58H - sire

Sired by Colgan's General 20G and backed by a Steele Front Runner 5E cow, Colgan's Man in Black 23M is a bull that brings power and practicality to the table. He's packed with middle and hip, offering the kind of mass and muscle expression that will add serious pounds to your calf crop.



Colgan's General 20G - sire



**Lot 55** COLGAN'S **Man in Black** 23M

CAN-21701-PB Male 26/1/2024 CCCC 23M

COLGAN'S BAXTER 1B  
COLGAN'S GENERAL 20G  
CODIAK URE IT GNK 48U

STEELE FRONT RUNNER 5E  
COLGAN'S TAFFETA 48G  
COLGAN'S CHIFFON 11C

MOOVIN ZPOTZ CAMARO 6X  
MOOVIN ZPOTZ ROXY AMBER 4R  
CODIAK KOSMO GNK 17R  
NORALTA HALETTE 11H

UPTO SPECS ULYSSES 25U  
LEGACY UNITY 51X  
CODIAK ALEXANDER GNK 75A  
TAFFETA OF P.A.R. 01A

BW	ADJ 205D	ADJ 365D	Myostatin	Coat Colour	Polled
84	646	1096	Non-Carrier	ED/ED	P/P

**Lot 56** COLGAN'S **Millenium** 32M

CAN19690-PB Male 2/2/2024 CCCC 32M

UNDERHILL ALL OUT 1D  
GREENWOOD COAL TRAIN 84J  
RAVENWORTH WILLOW 135E

COLGAN'S BAXTER 1B  
COLGAN'S GOTTLICHE GODDESS 36G  
COLGAN'S CAMIRA 14C

RIVER HILL 50U ALL IN 60A  
SPOTS 'N SPROUTS 10S  
RAVENWORTH INVICTUS 103C  
RAVENWORTH WILLOW 104B

MOOVIN ZPOTZ CAMARO 6X  
MOOVIN ZPOTZ ROXY AMBER 4R  
CODIAK TRUMP GNK 20T  
SPOTS 'N SPROUTS 17Y

BW	ADJ 205D	ADJ 365D	Myostatin	Coat Colour	Polled
82	627	1054	1, nt821	ED/ED	P/P

A real eye-catching bull with the complete package! Colgan's Millennium 32M offers a striking presence with his extended front end, bold rib shape, and powerful hip. Backed by Colgan's Baxter 1B on the bottom side, he combines proven maternal strength with a look that stands out in any pen. Whether you're after performance, structure, or a bull with the kind of color that grabs attention, 32M is a herd sire prospect worth serious consideration.





Hercules of P.A.R. 58H - sire

Lot **57**

COLGAN'S **Macbeth** 53M

CAN21702-PB Male 20/2/2024 CCCC 53M

**MX EL GUAPO 103E**  
**HERCULES OF P.A.R. 58H**  
**ESCORT COVERGIRL OF P.A.R. 57E**

**P.A.R. CASANOVA 55C**  
**HIGH MAINTENANCE OF MX 103Z**  
**COLGAN'S CASPIAN 10C**  
**COVER GIRL OF P.A.R. 57C**

**COLGAN'S BAXTER 1B**  
**COLGAN'S FORGET ME NOT 22F**  
**CODIAK URE IT GNK 48U**

**MOOVIN ZPOTZ CAMARO 6X**  
**MOOVIN ZPOTZ ROXY AMBER 4R**  
**CODIAK KOSMO GNK 17R**  
**NORALTA HALETTE 11H**

One of the youngest bulls in the sale, CCCC 53M is proving he can hold his own in a strong group. Sired by Hercules of P.A.R. 58H and backed by Colgan's Baxter 1B, this bull carries a strong maternal foundation with the muscle shape and structural integrity to go the distance.

BW	ADJ 205D	ADJ 365D	Myostatin	Coat Colour	Polled
82	649	1095	Non-Carrier	ED/ED	P/P



If you're looking for a female that will go out and work, raising big, powerful bull calves, this girl checks all the boxes! Sired by General, a bull who has proven himself time and time again through his exceptional progeny, she carries the kind of hip and middle that screams productivity. A standout in both design and function—she's one to bet on!



Codiak Ure It GNK 48U - grand dam



**Lot 58**

**COLGAN'S Mad Love** O3M

CAN21579-PB Female 13/1/2024 CCCC O3M

**COLGAN'S BAXTER 1B**  
**COLGAN'S GENERAL 20G**  
CODIAK URE IT GNK 48U

**WOLF LAKE FREE TRADE 42F**  
**RAVENWORTH LIGHTNING LADY 310H**  
RAVENWORTH LIGHTNING LADY 105E

MOOVIN ZPOTZ CAMARO 6X  
MOOVIN ZPOTZ ROXY AMBER 4R  
CODIAK KOSMO GNK 17R  
NORALTA HALETTE 11H

JSF TRADE SECRET 11A  
CODIAK NORA GNK 75Z  
RAVENWORTH INVICTUS 103C  
RAVENWORTH LIGHTNING LADY 120C

BW	ADJ 205D	ADJ 365D	Myostatin	Coat Colour	Polled
64	536	873	Non-Carrier	ED/ED	P/P

**Lot 59**

**COLGAN'S Mind Games** BSL 18M

CAN21586-PB Female 24/1/2024 CCCC 18M

**COLGAN'S BAXTER 1B**  
**COLGAN'S GENERAL 20G**  
CODIAK URE IT GNK 48U

**CODIAK PUTNAM GNK 61Y**  
**CODIAK PROMISE LAND GNK 17F**  
CODIAK CLARA GNK 6C

MOOVIN ZPOTZ CAMARO 6X  
MOOVIN ZPOTZ ROXY AMBER 4R  
CODIAK KOSMO GNK 17R  
NORALTA HALETTE 11H

CODIAK OSCAR GNK 8S  
NORTHERN LIGHTS 14N  
NOTTA FRONTLINE 303X  
ROB 'N SON'S FARMS 6R

BW	ADJ 205D	ADJ 365D	Myostatin	Coat Colour	Polled
86	540	894	Non-Carrier	ED/ED	P/H

The only black heifer in our offering—and she's an absolute standout! A powerhouse female with all the right pieces: hip, middle, and sheer dimension. Bred to be even better, her pedigree is stacked with proven greatness—General on the top side and Putnam on the bottom. If you're marking ones to watch, go ahead and put a couple of stars beside her—she's the kind you build around!





Walks in, sets up, and cranks that head—there's always someone saying, "That one should be shown!" But we'll leave that opportunity for someone else. Sired by none other than Greenwood's Coal Train, she's got the presence, design, and style to turn heads in the ring or in production. The kind that demands attention wherever she goes!

**Lot 60**

**COLGAN'S Maggie 34M**

CAN21576-PB Female 4/2/2024 CCCC 34M

UNDERHILL ALL OUT 1D  
GREENWOOD COAL TRAIN 84J  
RAVENWORTH WILLOW 135E

RIVER HILL 50U ALL IN 60A  
SPOTS 'N SPROUTS 10S  
RAVENWORTH INVICTUS 103C  
RAVENWORTH WILLOW 104B

COLGAN'S BAXTER 1B  
COLGAN'S GOTTLICHE GODDESS 36G  
COLGAN'S CAMIRA 14C

MOOVIN ZPOTZ CAMARO 6X  
MOOVIN ZPOTZ ROXY AMBER 4R  
CODIAK TRUMP GNK 20T  
SPOTS 'N SPROUTS 17Y

BW	ADJ 205D	ADJ 365D	Myostatin	Coat Colour	Polled
78	478	790	1,nt821	ED/ED	P/P

**Lot 61**

**COLGAN'S Minka 41M**

CAN21588-PB Female 7/2/2024 CCCC 41M

COLGAN'S BAXTER 1B  
COLGAN'S GENERAL 20G  
CODIAK URE IT GNK 48U

MOOVIN ZPOTZ CAMARO 6X  
MOOVIN ZPOTZ ROXY AMBER 4R  
CODIAK KOSMO GNK 17R  
NORALTA HALETTE 11H

CODIAK ALEXANDER GNK 75A  
COLGAN'S CHIFFON 11C  
TAFFETA OF P.A.R. 01A

RIVER HILL 26T YAGER 99Y  
CODIAK BLACK PEARL 28X  
P.A.R. XCALABAR 6X  
TAFFETA OF P.A.R. 01T

BW	ADJ 205D	ADJ 365D	Myostatin	Coat Colour	Polled
84	500	824	Non-Carrier	ED/ED	P/P



A striking female with the kind of markings you won't miss when you step into the pen! She's built with tons of shape, dimension, and natural presence. Sired by General and out of a no-miss cow that consistently delivers, she's got the pedigree and build to make an impact in any program.



Colgan's General 20G - sire



A unique outcross pedigree for our program, and she brings all the style you could want! Sleek through her front end with a striking neck and presence, she's got that extra touch of eye appeal while still being built to work.



Hercules of P.A.R. 58H - sire



Lot 62

Lot 62

COLGAN'S **Mona Lisa** 44M

CAN21580-PB Female 11/2/2024 CCCC 44M

MX EL GUAPO 103E  
HERCULES OF P.A.R. 58H  
ESCORT COVERGIRL OF P.A.R. 57E

BELMORAL'S FREDDIE 38G  
SKYE LINE SPECIAL JEWEL 5J  
SILVER TIP G GIRL 03G

P.A.R. CASANOVA 55C  
HIGH MAINTENANCE OF MX 103Z  
COLGAN'S CASPIAN 10C  
COVER GIRL OF P.A.R. 57C

CALICO CREEK BUTANE 8B  
BELMORAL'S LADY 01A  
REMIN'S SPECIAL 1L  
JENCREST UNIQUE 6U

BW	ADJ 205D	ADJ 365D	Myostatin	Coat Colour	Polled
76	495	820	Non-Carrier	ED/ED	P/P

Lot 63

COLGAN'S **Masquerade** 52M

CAN21575-PB Female 18/2/2024 CCCC 52M

COLGAN'S BAXTER 1B  
COLGAN'S GENERAL 20G  
CODIAK URE IT GNK 48U

CODIAK CAPITAIN GNK 5C  
PURA VIDA JUANITA 132J  
RIVER HILL 68L SHOW ME OFF 94F

MOOVIN ZPOTZ CAMARO 6X  
MOOVIN ZPOTZ ROXY AMBER 4R  
CODIAK KOSMO GNK 17R  
NORALTA HALETTE 11H

CODIAK PUTNAM GNK 61Y  
CODIAK COUGAR GNK 54R  
STAR BANK LACERTA 68L  
RIVER HILL SHOW ME OFF 60S

BW	ADJ 205D	ADJ 365D	Myostatin	Coat Colour	Polled
66	476	790	Non-Carrier	ED/ED	P/P

This one is impossible to miss when you walk in the pen! Loaded with style, shape, and dimension—she's got the hip, middle, and a sleek front end to tie it all together. Slap a halter on her and have some fun, because she's got show ring appeal written all over her!



Pura Vida Juanita 132J - dam



Lot 63



Lot **64** CODIAK **Promise Land** 17F  
 CAN8919-PB Female 31/3/2018 GNK 17F

CODIAK OSCAR GNK 8S  
**CODIAK PUTNAM GNK 61Y**  
 NORTHERN LIGHTS 14N

NOTTA FRONTLINE 303X  
**CODIAK CLARA GNK 6C**  
 ROB 'N SON'S FARMS 6R

CODIAK PHLEP GNK 3P  
 CODIAK MATEUSA RKW 63M  
 FLATLAKE BUZZ 60K  
 CODIAK KLIPSO RKW 31K

HWY. 4 SPECKLE PARK 2H  
 NOTTA PRETENDER 64P  
 SAGE LAD 2L  
 STYALS CASPER 1L

BW	Myostatin	Coat Colour	Polled
69	Non-Carrier	ED/ED	P/H

Oh boys, take a look at this machine! GNK 17F is a powerhouse female that brings the kind of capacity, structure, and maternal ability that never goes out of style. A direct daughter of Codiak Putnam GNK 61Y, she's the kind of cow that builds a program. Check out the impressive calf at her side—proof of the production power she brings year after year. **And if you're looking to add even more of these elite genetics to your herd, don't miss her outstanding General 20G daughter, CCCC 18M, also selling in the sale!** The smartest move you could make is to buy the whole family package and take home genetics that are proven to perform.  
 Owned with Below Sea Level

**CALF** COLGAN'S **Notorious** BSL 03N  
 UNR21853 Male 25/1/2025 CCCC 03N

COLGAN'S BAXTER 1B  
**COLGAN'S GENERAL 20G**  
 CODIAK URE IT GNK 48U

MOOVIN ZPOTZ CAMARO 6X  
 MOOVIN ZPOTZ ROXY AMBER 4R  
 CODIAK KOSMO GNK 17R  
 NORALTA HALETTE 11H

BW	Myostatin	Coat Colour	Polled
71	Non-Carrier	ED/ED	-



Codiak Putnam GNK 61Y



NRCS

Lot **65**

Lot **65**

COLGAN'S **Lanique** 46L

CAN20070-PB Female 16/3/2022 CCCC 46L

MX EL GUAPO 103E  
**HERCULES OF P.A.R. 58H**  
 ESCORT COVERGIRL OF P.A.R. 57E

COLGAN'S BAXTER 1B  
**COLGAN'S GOTTLICHE GODDESS 36G**  
 COLGAN'S CAMIRA 14C

PA.R. CASANOVA 55C  
 HIGH MAINTENANCE OF MX 103Z  
 COLGAN'S CASPIAN 10C  
 COVER GIRL OF P.A.R. 57C

MOOVIN ZPOTZ CAMARO 6X  
 MOOVIN ZPOTZ ROXY AMBER 4R  
 CODIAK TRUMP GNK 20T  
 SPOTS 'N SPROUTS 17Y

BW	Myostatin	Coat Colour	Polled
78	Non-Carrier	ED/ED	P/P

**CALF**

COLGAN'S **Nikita** 01N

UNR21760 Female 4/1/2025 CCCC 01N

INC GOLIATH 747G  
**RAVENWORTH OTIS 504L**  
 RAVENWORTH PRAIRIE LILY 109E

RIVER HILL TRAFFIC JAM 26T  
 CODIAK GYPSY RAIN GNK 63B  
 RAVENWORTH INVICTUS 103C  
 STAR BANK TARAZED 46T

BW	Myostatin	Coat Colour	Polled
54	Non-Carrier	ED/ED	P/P

A young cow proving her worth early on, she's putting everything into raising her first calf—just the kind of maternal instinct and productivity you want in your herd. Sired by Hercules of P.A.R. 58H and backed by a Baxter 1B cow.



Ravenworth Otis 504L - sire to calf



NRCS



Lot **66**

COLGAN'S **Lunaria** 47L

CAN21854-PB Female 18/3/2023 CCCC 47L

COLGAN'S BAXTER 1B  
COLGAN'S GENERAL 20G  
CODIAK URE IT GNK 48U

MOOVIN ZPOTZ CAMARO 6X  
MOOVIN ZPOTZ ROXY AMBER 4R  
CODIAK KOSMO GNK 17R  
NORALTA HALETTE 11H

CODIAK TYCOON CAT GNK 12Z  
COLGAN'S EMMA 40E  
CODIAK WILD LADY GNK 46W

LEGACY UNRIVALED 12U  
SPOTS 'N SPROUTS 7W  
UPTO SPECS SALIENT 1S  
LEIGH-AL-ANN-LILY 2D

BW	Myostatin	Coat Colour	Polled
74	Non-Carrier	ED/ED	P/P

**CALF**

COLGAN'S **Nasomatto** 04N

UNR21856 Female 28/1/2025 CCCC 04N

INC GOLIATH 747G  
RAVENWORTH OTIS 504L  
RAVENWORTH PRAIRIE LILY 109E

RIVER HILL TRAFFIC JAM 26T  
CODIAK GYPSY RAIN GNK 63B  
RAVENWORTH INVICTUS 103C  
STAR BANK TARAZED 46T

BW	Myostatin	Coat Colour	Polled
72	Non-Carrier	ED/ED	P/P

A young black cow with a striking fancy speckled calf at her side, showcasing the kind of maternal ability and style that stands out. Sired by General 20G and backed by a Codiak Tycoon Cat GNK 12Z cow, she brings a strong genetic foundation with a proven maternal line.



Codiak Tycoon Cat GNK 12Z



Ravenworth Otis 504L - sire to calf



Colgan's Kiss and Tell 27K &  
Colgan's Magnum 127K

2024 CWA Grand Champion Female



Colgan's Kiss and Tell 27K &  
Colgan's Magnum 127K

2024 Farmfair Grand Champion Female



## Spots 'N Sprouts Emma 1E

Myostatin	Coat Colour	Polled
Non-Carrier	ED/ED	P/P

Lot **67**

## Emma X General 4 Embryos

**COLGAN'S BAXTER 1B**  
**COLGAN'S GENERAL 20G**  
**CODIAK URE IT GNK 48U**

**SPOTS 'N SPROUTS BRAVO 118B**  
**SPOTS 'N SPROUTS EMMA 1E**  
**SPOTS 'N SPROUTS 1B**

**MOOVIN ZPOTZ CAMARO 6X**  
**MOOVIN ZPOTZ ROXY AMBER 4R**  
**CODIAK KOSMO GNK 17R**  
**NORALTA HALETTE 11H**

**UNEEDA YAEL 06Y**  
**SHER SPECS SUNDAY 23Y**  
**SIX STAR 82U ROYAL FLESH 101Y**  
**SPOTS 'N SPROUTS 2U**

This could be your last chance to own full sibling embryos to Colgan's Kiss and Tell 27K. For the past two years Kiss and Tell 27K has proven herself in the show ring and her 2024 calf (Magnum 127K) has shown without a doubt her ability to raise a calf.

Embryos are stored at Davis Rairdan Embryo Transplants (Crossfield, Alberta). Storage and delivery fees are the responsibility of the purchaser. Qualified for North America and Australia. Calves are eligible to be registered as purebreds.



Colgan's Kiss and Tell 27K & Colgan's  
Magnum 127K

2024 Manitoba Ag Ex Grand Champion  
Female



Colgan's Kiss and Tell 27K

2023 CWA Grand Champion Female



## Colgan's General 20G

Myostatin	Coat Colour	Polled
Non-Carrier	ED/ED	P/P



Beauty Melissa of P.A.R. 561B

Myostatin	Coat Colour	Polled
Non-Carrier	ED/ED	P/P

Lot **68**

Melissa X Coal Train  
3 Embryos

UNDERHILL ALL OUT 1D  
GREENWOOD COAL TRAIN 84J  
RAVENWORTH WILLOW 135E

UNEEDA YULE TIDE OF PAR 05Y  
BEAUTY MELISSA OF P.A.R. 561B  
MELISSA II OF P.A.R. 56X

RIVER HILL 50U ALL IN 60A  
SPOTS 'N SPROUTS 10S  
RAVENWORTH INVICTUS 103C  
RAVENWORTH WILLOW 104B

CODIAK OSCAR GNK 8S  
TORRIE OF P.A.R. 05P  
P.A.R. PAPA RAZZI 6P  
MELISSA II OF P.A.R. 56T

This pairing in our opinion goes back to one of the best bulls in the breed and the udder of PAR 561B might be one of the most correct udders as well. Two rights cannot make a wrong!

Embryos are stored at Davis Rairdan Embryo Transplants (Crossfield, Alberta). Storage and delivery fees are the responsibility of the purchaser. Qualified for North America. Calves are eligible to be registered as purebreds.



Greenwood Coal Train 84J

Myostatin	Coat Colour	Polled
1,nt821	ED/ED	P/P



Western Jewel 116B

Myostatin	Coat Colour	Polled
Non-Carrier	ED/e	P/P



Wattle Grove Smoke and Mirrors

Myostatin	Coat Colour	Polled
Non-Carrier	-	-



JSF Wall Street 36E

Myostatin	Coat Colour	Polled
Non-Carrier	ED/ED	P/P

Lot **69A** Western Jewel X Smoke & Mirrors  
2 Embryos

CODIAK PUTNAM GNK 61Y  
**WATTLE GROVE SMOKE AND MIRRORS**  
 CODIAK GOOD GOLLY GNK 11U

RIVER HILL 12X ZAAR 7Z  
**RAVENWORTH WESTERN JEWEL 116B**  
 RIVER HILL 101U YOLA 35Y

CODIAK OSCAR GNK 8S  
 NORTHERN LIGHTS 14N  
 RAVEN MEADOWS MAGNUM 10N  
 SPOTS 'N SPROUTS 3K  
 CODIAK FIDDLER GNK 12X  
 RIVER HILL 12U X-ULTRA 07X  
 SPOTS 'N SPROUTS ULYSSES 101U  
 RIVER HILL 64S WHISPER 25W

Lot **69B** Western Jewel X Wall Street  
2 Embryos

ASPEN ACRES T.N.T. 4Y  
**JSF WALL STREET 36E**  
 REDNECK WHISKEY 7W

RIVER HILL 12X ZAAR 7Z  
**RAVENWORTH WESTERN JEWEL 116B**  
 RIVER HILL 101U YOLA 35Y

SPOTS AND SPROUTS DYNAMITE 23T  
 ASPEN ACRES 4U  
 REDNECK RANCH'S TEDDY 5T  
 REDNECK RANCH'S SCARLET 1S  
 CODIAK FIDDLER GNK 12X  
 RIVER HILL 12U X-ULTRA 07X  
 SPOTS 'N SPROUTS ULYSSES 101U  
 RIVER HILL 64S WHISPER 25W

Embryos are stored Davis Rairdan Embryo Transplants (Crosfield, Alberta). Storage and delivery fees are the responsibility of the purchaser. Qualified for North America and Australia. Calves are eligible to be registered as purebreds.



## Colgan's Camira 14C

Myostatin	Coat Colour	Polled
Non-Carrier	ED/ED	P/P

Lot **70**

## Camira X Dexter 3 Embryos

CODIAK TYCOON CAT GNK 12Z  
COLGAN'S DEXTER D'ANGELO 01D  
SPOTS 'N SPROUTS 10Y

CODIAK TRUMP GNK 20T  
COLGAN'S CAMIRA 14C  
SPOTS 'N SPROUTS 17Y

LEGACY UNRIVALED 12U  
SPOTS 'N SPROUTS 7W  
RIVER HILL 64S URBAN COWBOY 3U  
SPOTS 'N SPROUTS 12U

HWY. 4 SPECKLE PARK 20L  
EL RANCHO NO GOTTO SHANS 02J  
SPOTS 'N SPROUTS UTOPIA 104U  
SPOTS 'N SPROUTS 01S

Embryos are stored Davis Rairdan Embryo Transplants (Crosfield, Alberta). Storage and delivery fees are the responsibility of the purchaser. Qualified for North America and Australia. Calves are eligible to be registered as purebreds.



## Colgan's Dexter D'angelo 01D

Myostatin	Coat Colour	Polled
Non-Carrier	ED/ED	P/P



Colgan's Dexter D'Angelo 01D  
Lloydminster Stockade Roundup 2018



Colgan's Dexter D'Angelo 01D  
CWA 2017



- Lot **71A** 1 package 10 straws
- Lot **71B** 1 package 10 straws
- Lot **71C** 1 package 10 straws

This bull has done nothing but impress! From a standout calf to a dominant herd sire, General has proven himself in the show ring and, more importantly, in the pasture. His influence is undeniable, with progeny like Colgan's Kiss and Tell 27K, a two-time Canadian Western Agribition Champion Female, as well as a 2025 Champion at Manitoba Ag Ex and Farmfair International. Another exciting son, Colgan's Lawman, has followed in his sire's footsteps, claiming Champion Bull at Manitoba Ag Ex and Canadian Western Agribition, along with a Reserve title at Farmfair International. **If you're not breeding to General already, this is your chance! He brings power, performance, and eye appeal—everything you want in your calves. His offspring have consistently headlined our sales, and this year is no exception. Don't miss out on adding this proven genetic package to your program!**

Semen is stored at Alta Genetics. Storage and delivery fees are the responsibility of the buyer. Although the semen is qualified for North America and Australia, the semen cannot be shipped to USA or AUS due to semen rights in those countries.



NRCS

Lot **71**

Myostatin	Coat Colour	Polled
Non-Carrier	ED/ED	P/P

Lot **71** COLGAN'S **General** 20G  
 CAN9664--PB Male 22/1/2019 CCCC 20G

- MOOVIN ZPOTZ CAMARO 6X
- COLGAN'S BAXTER 1B**
- MOOVIN ZPOTZ ROXY AMBER 4R
- CODIAK KOSMO GNK 17R
- CODIAK URE IT GNK 48U**
- NORALTA HALETTE 11H
- LEGACY TURNPIKE CRUISER 27T
- STYALS LUCKY PRINCESS 9L
- P.A.R. MR. POWERSTROKE 4M
- MATTI OF P.A.R. 25M
- CODIAK MR. BLACK RKW 13M
- HWY. 4 SPECKLE PARK 25J
- ASPEN ACRES T.N.T. 4Y
- DAR NORALTA FAYE 8F

Lot **72** INC **Evolution** 43L  
 CAN19590-PB Male 20/1/2023 INC 43L

- SPOTS 'N SPROUTS NEFROM 101N
- STAR BANK KING GEORGE 82U**
- STAR BANK 11H
- CAJA ZEPELIN 1B
- INC CHARLESTON 220H**
- PINE VALLEY ELSA 3C
- PRAIRIE HILL ENTICER 89G
- SPOTS 'N SPROUTS 6A
- NORALTA 9E
- LIGHTNING LADY 19C
- UNEEDA ZAPPER 13Z
- NOTTA 60W PHOTO-FINISH 1Z
- RIVER HILL 101U XPORTER 55X
- CODIAK UNIQUE GNK 8R

- Lot **72A** 1 package 10 straws
- Lot **72B** 1 package 10 straws
- Lot **72C** 1 package 10 straws

The first public offering of semen from INC Evolution 43L, the high selling yearling bull from the 2024 Leading Edge Sale. Evolution is a long bodied, smooth made, sound moving individual with a big time presence. He combines a few of the breeds best in Starbank King George, Caja Zeppelin, and Codiak Unique GNK 8R. Evolution's application is widespread as he is safe for use on heifers and possesses the performance and style to be used on donor females!

Semen is stored at Alta Genetics. Storage and delivery fees are the responsibility of the buyer. Qualified for CAN, USA, AUS and Brazil.



Myostatin	Coat Colour	Polled
1,nt821	ED/ED	P/P

Lot **72**



**Manitoba Ag Ex**  
Grand Champion Bull



**Manitoba Ag Ex**  
Grand Champion Female



**PAEX Little Lady Classic Bred Heifer Jackpot**  
All Breeds Reserve Grand Champion and Grand Champion Speckle Park Female



**Manitoba Ag Ex**  
Champion Heifer Calf



**Farm Fair**  
Reserve Grand Champion Bull



**Farm Fair**  
Grand Champion Female



**Farm Fair**  
Champion Intermediate Yearling Heifer



**CWA**  
Reserve Intermediate Yearling Champion Heifer



**CWA**  
Grand Champion Bull



**CWA**  
Grand Champion Female



Ravenworth Neo 305K



Breeder Hereds



Ravenworth Lightning Lady 314M



Ravenworth Lightning Lady 314M



Ravenworth Lightning Lady 508M



Ravenworth Lightning Lady 508M



Pairs of bulls



Ravenworth Lightning Lady 508M

# RAVENWORTH CATTLE

Garry and Donna Berting  
 Box 134  
 Middle Lake, SK S0K 2X0  
 Garry: 306-231-7567  
 Donna: 306-231-5175  
 garry@ravenworth.com  
 www.ravenworth.com



We have an exciting line-up of bulls on offer this year with a great variety in sires that we are extremely pleased with, our selection of females is very attractive. Many of the bulls will be calving ease and work on heifers. Please reach out with any questions or cattle can be viewed on the farm prior to the sale. Join us on viewing day or sale day, we look forward to catching up with everyone.

*Ravenworth Cattle*



Lot **73**

## RAVENWORTH **Bond** 313M

CAN20983-PB Male 15/1/2024 GDB 313M

RAVENWORTH INVICTUS 103C  
 RAVENWORTH KRAKEN 505J  
 RAVENWORTH PRAIRIE LILY 122B

RAVENWORTH KLEOS 3Y  
 RAVENWORTH NORTHERN STAR 101A  
 RIVER HILL 12X ZAAR 7Z  
 STAR BANK 1S

WOLF LAKE FREE TRADE 42F  
 RAVENWORTH PRAIRIE LILY 329J  
 STAR BANK TARAZED 46T

JSF TRADE SECRET 11A  
 CODIAK NORA GNK 75Z  
 SPOTS 'N SPROUTS NEFROM 101N  
 STAR BANK 50J

BW	ADJ 205D	ADJ 365D	Myostatin	Coat Colour	Polled
83	575	858	Non-Carrier	ED/ED	H/P

Here is a bull that types his sire with plenty of muscle expression, spring of rib and extreme attractiveness. Showing base width and deep quarters and still maintaining calving ease skull and frontend. Here is an exciting Krack at our first Kraken yearling bull offering! Ravenworth Prairie Lily 329J is packed with maternal qualities. The maternal grand dam of this bull was one of our top cows for many years.



Star Bank Tarazed 46T - Maternal grand dam



Ravenworth Kraken 505J - sire



Ravenworth Kraken 505J - sire

When you have a productive cow in your herd, they always bring you something great and this year Ravenworth Prairie Lily 9Y doubled that up, with a set of twin Kraken bull calves. Longevity and maternal traits run deep in these bulls and topped off with Ravenworth Kraken 505J as the sire. Ravenworth Prairie Lily 9Y is a matriarch cow still producing in our herd. Take your pick.



Lot **74**

RAVENWORTH **Bane** 319M

CAN21784-PB Male 29/1/2024 GDB 319M

RAVENWORTH INVICTUS 103C  
**RAVENWORTH KRAKEN 505J**  
 RAVENWORTH PRAIRIE LILY 122B

RAVENWORTH KLEOS 3Y  
 RAVENWORTH NORTHERN STAR 101A  
 RIVER HILL 12X ZAAR 7Z  
 STAR BANK 1S

STAR BANK 64R RIO 6W  
**RAVENWORTH PRAIRIE LILY 9Y**  
 STAR BANK TWINKLE 51T

NOTTA ROMEO 64R  
 STAR BANK 99M  
 SPOTS 'N SPROUTS NEFROM 101N  
 STAR BANK 2H

BW	ADJ 205D	ADJ 365D	Myostatin	Coat Colour	Polled
70	596	900	Non-Carrier	ED/ED	P/P

Lot **75**

RAVENWORTH **Burley** 320M

CAN21420-PB Male 29/1/2024 GDB 320M

RAVENWORTH INVICTUS 103C  
**RAVENWORTH KRAKEN 505J**  
 RAVENWORTH PRAIRIE LILY 122B

RAVENWORTH KLEOS 3Y  
 RAVENWORTH NORTHERN STAR 101A  
 RIVER HILL 12X ZAAR 7Z  
 STAR BANK 1S

STAR BANK 64R RIO 6W  
**RAVENWORTH PRAIRIE LILY 9Y**  
 STAR BANK TWINKLE 51T

NOTTA ROMEO 64R  
 STAR BANK 99M  
 SPOTS 'N SPROUTS NEFROM 101N  
 STAR BANK 2H

BW	ADJ 205D	ADJ 365D	Myostatin	Coat Colour	Polled
72	586	877	Non-Carrier	ED/ED	P/P



Ravenworth Kraken 505J - sire



Ravenworth Prairie Lily 9Y - dam





Lot **76**

RAVENWORTH **Sabre** 504M

CAN21473-PB Male 10/1/2024 GDB 504M

LEGACY PURE WILL 4C  
**LEGACY PURE COUNTRY 174E**  
 LEGACY WILDBERRY 116W

LEGACY BRUTE FORCE 61Y  
 LEGACY SOUR-DOUGH 62Z  
 ROCKY RIDGE SILVERADO BEN 1S  
 LEGACY TINSEL 119T

RAVENWORTH INVICTUS 103C  
**RAVENWORTH ACADIA 302H**  
 RAVENWORTH ACADIA 5Y

RAVENWORTH KLEOS 3Y  
 RAVENWORTH NORTHERN STAR 101A  
 STAR BANK 64R RIO 6W  
 STAR BANK SILKEN 83S

Here is what you wish for when you plan a flush mating. Sabre is an incredibly attractive made bull with all the right things in all the right places. His dam Ravenworth Acadia 302H is a moderate cow with an excellent udder, tons of middle and shape, mated to the Pure Country bull. Calving ease and performance all in one. You can see her natural bull calf as well as lot 78.

BW	ADJ 205D	ADJ 365D	Myostatin	Coat Colour	Polled
80	625	1020	Non-Carrier	ED/ED	P/P



Legacy Pure Country 174E - sire



Ravenworth Acadia 302H - dam



Here is our first offering from Ravenworth Neo 305K. Attractive made with strong lines, big bodied and overall balance this bull has the look. Neo stamped this calf with exceptional length of body and a proud front end. Neo was in our showstring many times and is exceptionally docile.



Ravenworth Neo 305K - sire

**Lot 77** RAVENWORTH **Domino** 308M  
CAN21468-PB Male 12/1/2024 GDB 308M

- INC ASSASSIN 777G
- RAVENWORTH NEO 305K**
- RAVENWORTH LIGHTNING LADY 126F
- STAR BANK KING GEORGE 82U
- CODIAK GYPSY RAIN GNK 63B
- RAVENWORTH INVICTUS 103C
- RAVENWORTH LIGHTNING LADY 120C
- CODIAK KOOL CHARLIE GNK 76B
- PRAIRIE HILL CAPRICE 5C
- RAVENWORTH INVICTUS 103C
- STAR BANK SILKEN 83S

BW	ADJ 205D	ADJ 365D	Myostatin	Coat Colour	Polled
74	568	875	Non-Carrier	ED/ED	P/P

**Lot 78** RAVENWORTH **Sultan** 315M  
CAN20984-PB Male 19/1/2024 GDB 315M

- CODIAK OSCAR GNK 8S
- CODIAK END TO END GNK 802E**
- CODIAK GNK 53W
- RAVENWORTH INVICTUS 103C
- RAVENWORTH ACADIA 302H**
- RAVENWORTH ACADIA 5Y
- CODIAK PHLEP GNK 3P
- CODIAK MATEUSA RKW 63M
- CODIAK KOSMO GNK 17R
- CODIAK NICE LADY RKW 25N
- RAVENWORTH KLEOS 3Y
- RAVENWORTH NORTHERN STAR 101A
- STAR BANK 64R RIO 6W
- STAR BANK SILKEN 83S

BW	ADJ 205D	ADJ 365D	Myostatin	Coat Colour	Polled
84	702	968	Non-Carrier	ED/ED	P/P



Once again this cow out did herself. When moderate cows can produce calves with tons of performance it is a win-win. She is quickly placing herself as a matron in our herd with two bulls in the sale this year. This is her natural calf, this pair caught our eye all summer in the pasture. 315M is a large framed bull with power and great length of spine.



Codiak End to End 802E - sire



Lot **79**

RAVENWORTH **Scout** 507M

UNR21474 Male 18/1/2024 GDB 507M

STAR BANK KING GEORGE 82U  
**INC ASSASSIN 777G**  
 CODIAK GYPSY RAIN GNK 63B

RAVENWORTH NAVIGATOR 15Z  
**RAVENWORTH LIGHTNING LADY 120C**  
 SIX STAR LIGHTNING LADY 22W

SPOTS 'N SPROUTS NEFROM 101N  
 STAR BANK 11H  
 CODIAK OSCAR GNK 8S  
 CODIAK SHELLY GNK 11X  
 A & W 15R  
 STAR BANK URANIA 85U  
 NOTTA ROMEO 64R  
 STAR BANK 7P

Here is an embryo bull calf from our sure-fire cow Ravenworth Lightning Lady 120C. With many of her progeny being in our show string over the years, she produces the style we appreciate. This is the type of maternal genetic strength that herd bulls need to have consistent calf crops.

BW	ADJ 205D	ADJ 365D	Myostatin	Coat Colour	Polled
87	526	804	Non-Carrier	ED/ED	P/P



INC Assassin 777G - sire



Ravenworth Lightning Lady 120C - dam





Lot **80**

**RAVENWORTH Edge 334M**

CAN21470-PB Male 25/2/2024 GDB 334M

RIVER HILL GUSTOV 963G  
**GRAHAM CREEK JERICHO 24J**  
 D.A.M. DOTS GRACIOUS 66G

CODIAK GEAZA GNK 105D  
 RIVER HILL 54Z EAZY-GOING 36E  
 D.A.M. DOTS 94A DYNAMITE 31D  
 D.A.M. DOTS EBONY 2E

RAVENWORTH KLEOS 3Y  
**RAVENWORTH PRAIRIE LILY 321K**  
 RAVENWORTH PRAIRIE LILY 122B

STAR BANK 64R RIO 6W  
 STAR BANK TUCANA 38T  
 RIVER HILL 12X ZAAR 7Z  
 STAR BANK 1S

Here is a bull with some powerful genetics. The Grand Dam Prairie Lily 122B produced many notable progeny such as Ravenworth Kraken 505J, Ravenworth Prairie Lily 104G and many more. Here we have mated her to Ravenworth Kleos 3Y to produce 321K. With a jam packed dam and sired by Graham Creek Jericho, 334M is loaded with style and substance.

BW	ADJ 205D	ADJ 365D	Myostatin	Coat Colour	Polled
78	638	979	Non-Carrier	ED/ED	P/P



Ravenworth Prairie Lily 122B - grand dam



Graham Creek Jericho 24J - sire



Lot **81**

RAVENWORTH **Duke** 317M

CAN21469-PB Male 24/1/2024 GDB 317M

RIVER HILL 5C FIRST-RATE 859F  
**RH KAYAK 217K**  
 RIVER HILL 2B DAINTY 110D

RAVENWORTH INVICTUS 103C  
**RAVENWORTH PRAIRIE LILY 104G**  
 RAVENWORTH PRAIRIE LILY 122B

CODIAK CAPITAINE GNK 5C  
 RIVER HILL 54Z CORA-JADE 59C  
 SECOND CHANCE BAZINGA 2B  
 RIVER HILL 03 AVETTE-MINDY 11A  
 RAVENWORTH KLEOS 3Y  
 RAVENWORTH NORTHERN STAR 101A  
 RIVER HILL 12X ZAAR 7Z  
 STAR BANK 1S

Here is a bull with tons of potential, his dam Ravenworth Prairie Lily 104G is Ravenworth Kraken 505J's full sister, bred to the RH Kayak bull - interesting pedigree produced and interesting bull. Big topped, wide and attractive makes Duke an excellent sire candidate.

BW	ADJ 205D	ADJ 365D	Myostatin	Coat Colour	Polled
88	545	903	Non-Carrier	ED/ED	P/P



RH Kayak 217K- sire



Ravenworth Prairie Lily 104G - dam



Lot **82**

RAVENWORTH Nitro 328M

CAN21471-PB Male 14/2/2024 GDB 328M

RIVER HILL 5C FIRST-RATE 859F  
 RH KAYAK 217K  
 RIVER HILL 2B DAINTY 110D

CODIAK CAPITAINE GNK 5C  
 RIVER HILL 54Z CORA-JADE 59C  
 SECOND CHANCE BAZINGA 2B  
 RIVER HILL 03 AVETTE-MINDY 11A

SPOTS 'N SPROUTS CHOREBOY 109C  
 RAVENWORTH NORTHERN STAR 120F  
 RAVENWORTH NORTHERN STAR 117B

UNEEDA YAEL 06Y  
 SPOTS 'N SPROUTS 17Z  
 RIVER HILL 12X ZAAR 7Z  
 STAR BANK URANIA 85U

Nitro is off of one of our Spots N' Sprouts Choreboy daughters. She always adds punch to her calves and this one is no exception. This unique pedigree, bred to the RH Kayak bull is something very genetically different in our offering.

BW	ADJ 205D	ADJ 365D	Myostatin	Coat Colour	Polled
99	634	938	Non-Carrier	ED/ED	P/P

Thank you

to our bidders & supporters!



Ravenworth North Star 120F - dam



122E has massive capacity with a straight topline and carries great muscle expression. Reaching back into the breed's genetics to the Notta Frontline bull, here is a female that is sure to be a tank.

Lot **83** RAVENWORTH **Prairie Lily** 306M

CAN21457--PB Female 8/1/2024 GDB 306M

HWY. 4 SPECKLE PARK 2H  
**NOTTA FRONTLINE 303X**  
 NOTTA PRETENDER 64P

PARKLAND SPECKLE PARKS 5B  
 LEIGH-AL-ANN PRINCESS 1B  
 STAR BANK LACERTA 68L  
 STAR BANK 64L

RIVER HILL 12X ZAAR 7Z  
**RAVENWORTH PRAIRIE LILY 122E**  
 STAR BANK TUCANA 38T

CODIAK FIDDLER GNK 12X  
 RIVER HILL 12U X-ULTRA 07X  
 SPOTS 'N SPROUTS NEFROM 101N  
 STAR BANK 68G

BW	ADJ 205D	ADJ 365D	Myostatin	Coat Colour	Polled
64	449	659	Non-Carrier	ED/e	P/H

Lot **84** RAVENWORTH **Prairie Lily** 331M

UNR21458 Female 18/2/2024 GDB 331M

JSF UNMARKED 2D  
**JAD QUISTACAT Q48**  
 JSF PADDY 34D

HS UNTAPPED 3A  
 JENCREST YAVONNA 6Y  
 CODIAK HEAR THE GHOST GNK 22Z  
 PRAIRIE HILL PADDY 233P

RAVENWORTH INVICTUS 103C  
**RAVENWORTH PRAIRIE LILY 511J**  
 RAVENWORTH PRAIRIE LILY 122B

RAVENWORTH KLEOS 3Y  
 RAVENWORTH NORTHERN STAR 101A  
 RIVER HILL 12X ZAAR 7Z  
 STAR BANK 1S

BW	ADJ 205D	ADJ 365D	Myostatin	Coat Colour	Polled
81	472	662	Pending	Pending	Pending



511J is a full sib to Ravenworth Kraken 505J, she displays many of the same traits that he has, a huge spring of rib, deep quarters and square hipped. 331M is sired by the JAD Quisticat bull from Australia, giving this female a very stacked pedigree.



JAD Quisticat Q48 - sire

Looking to get into the Willow family? Her great grand dam was a many times champion, and her grand dam maternal flush sib was Ravenworth Willow 510H, Ms World Speckle Park! These females are always showstoppers. With correctness and femininity, we always appreciate the Willow females. This first calver did a great job on this fancy heifer.



Graham Creek Jericho 24J



Lot **85**

RAVENWORTH Willow 333M

CAN21456-PB Female 21/2/2024 GDB 333M

RIVER HILL GUSTOV 963G  
GRAHAM CREEK JERICO 24J  
D.A.M. DOTS GRACIOUS 66G

WOLF LAKE FREE TRADE 42F  
RAVENWORTH WILLOW 318K  
RAVENWORTH WILLOW 503H

CODIAK GEAZA GNK 105D  
RIVER HILL 54Z EAZY-GOING 36E  
D.A.M. DOTS 94A DYNAMITE 31D  
D.A.M. DOTS EBONY 2E

JSF TRADE SECRET 11A  
CODIAK NORA GNK 75Z  
RAVENWORTH INVICTUS 103C  
NOTTA 26T JANETTE 3W

BW	ADJ 205D	ADJ 365D	Myostatin	Coat Colour	Polled
83	578	754	Non-Carrier	ED/ED	P/P

Lot **86**

RAVENWORTH Lightning Lady 343M

CAN21451-PB Female 18/3/2024 GDB 343M

RIVER HILL GUSTOV 963G  
GRAHAM CREEK JERICO 24J  
D.A.M. DOTS GRACIOUS 66G

RIVER HILL HI-TYDE 065H  
RAVENWORTH LIGHTNING LADY 338K  
SIX STAR LIGHTNING LADY 22W

CODIAK GEAZA GNK 105D  
RIVER HILL 54Z EAZY-GOING 36E  
D.A.M. DOTS 94A DYNAMITE 31D  
D.A.M. DOTS EBONY 2E

WRANGLER MR PERFECT 8D  
RIVER HILL 99W YSABEL 65Y  
NOTTA ROMEO 64R  
STAR BANK 7P

BW	ADJ 205D	ADJ 365D	Myostatin	Coat Colour	Polled
88	609	761	1, NT821	ED/ED	P/P

Lightning Lady cow family always produces very fancy females with excellent phenotype. These angular sharp fronted females easily make their way into the show string. Sired by our walking bull Graham Creek Jericho, who sired the high selling bull in last year's sale, this will be a female that comes to the top of the pen. Don't let her age deter you, this will be an amazing female.





Lot **87**

RAVENWORTH **Acadia** 502J

CAN12815--PB Female 4/1/2021 GDB 502J

**CODIAK OSCAR GNK 8S**  
**CODIAK END TO END GNK 802E**  
 CODIAK GNK 53W

**CODIAK PHLEP GNK 3P**  
**CODIAK MATEUSA RKW 63M**  
**CODIAK KOSMO GNK 17R**  
**CODIAK NICE LADY RKW 25N**

**STAR BANK 64R RIO 6W**  
**RAVENWORTH ACADIA 5Y**  
 STAR BANK SILKEN 83S

**NOTTA ROMEO 64R**  
**STAR BANK 99M**  
**SPOTS 'N SPROUTS NEFROM 101N**  
 STAR BANK 4P

This young cow is sired by Codiak End to End. The Acadia cow family produces great females and many strong bulls. Here is a chance to move right into a working cow. Her dam is Ravenworth Acadia 5Y who was an excellent producer in our herd and had many high priced heifers over the years. She will calve here in March.

**Exposed to Graham Creek Jericho 24J to June 18**  
**Exposed to Colgans Lazarus 25L from June 19**

BW	Myostatin	Coat Colour	Polled
90	Non-Carrier	ED/ED	P/P

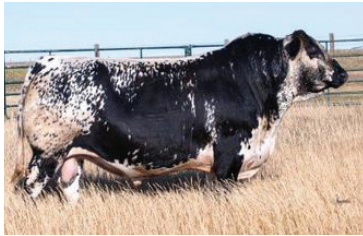


CODIAK END TO END GNK 802E- sire



Ravenworth ACADIA 5Y - dam

Willow 510H needs little introduction as she was a many times champion, as well as, Miss World Speckle Park. We have flushed her to the Legacy Pure Country bull, we have some bred heifers in our herd of this combination. This is an excellent way to get into the Willow cow family. We have sold flushes on her in the past to \$8,500, her first calf, a heifer, sold for \$30,000 and her first bull was our high selling bull in last year's sale. This will be the only opportunity to purchase embryos from this cow as she is no longer with us.



Legacy Pure Country 174E - sire



QUALIFIED FOR Canada, USA, & AUS

Lot **88**

**Willow X Pure Country**  
3 Embryo Conventional

LEGACY PURE WILL 4C  
**LEGACY PURE COUNTRY 174E**  
LEGACY WILDBERRY 116W

RAVENWORTH INVICTUS 103C  
**RAVENWORTH WILLOW 510H**  
NOTTA 26T JANETTE 3W

LEGACY BRUTE FORCE 61Y  
LEGACY SOUR-DOUGH 62Z  
ROCKY RIDGE SILVERADO BEN 1S  
LEGACY TINSEL 119T

RAVENWORTH KLEOS 3Y  
RAVENWORTH NORTHERN STAR 101A  
STAR BANK 58L  
NOTTA 2R PRETENDER 4T

Willow & Pure Country:

Myostatin	Coat Colour	Polled
Non-Carrier	ED/ED	P/P

Here is a proven dam to a proven sire. Our CWA sale heifer, GDB 301M, was a daughter from 31A. She has produced many great prodigy that are working in many herds. Here is a breeding with a new twist to the Wolf Lake Field Ready bull.



Wolf Lake Field Ready 52F - sire

QUALIFIED FOR Canada

Lot **89**

**Spots n' Sprouts X Field Ready**  
3 Embryo Conventional

RIVER HILL 26T YAGER 99Y  
**WOLF LAKE FIELD READY 52F**  
NOTTA PHO-FINISH 54P

SPOTS 'N SPROUTS WAMPUM 102W  
**SPOTS 'N SPROUTS 31A**  
SPOTS 'N SPROUTS 12S

RIVER HILL TRAFFIC JAM 26T  
PRAIRIE HILL HEARTBREAKER 99L  
STAR BANK LACERTA 68L  
STAR BANK LEONID NIGHT 54L

CODIAK NORSEMAN RKW 38N  
SPOTS 'N SPROUTS 2S  
CODIAK NORSEMAN RKW 38N  
SPOTS 'N SPROUTS 5N

Spots n' Sprouts:

Myostatin	Coat Colour	Polled
Non-Carrier	1, nt821	P/P

Wolf Lake Field Ready:

Myostatin	Coat Colour	Polled
Non-Carrier	ED/ED	P/P

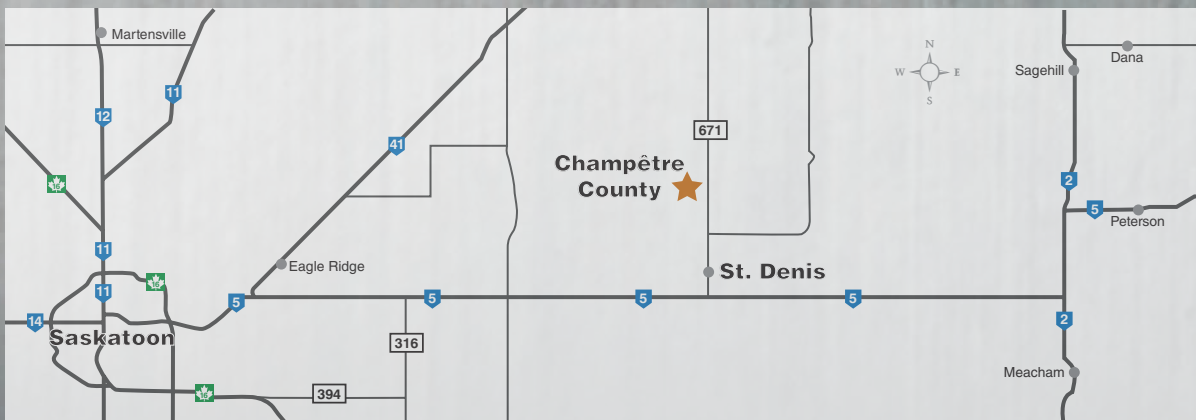


Return Undeliverable  
Canadian Addresses To:  
T Bar C Cattle Co. Ltd.  
Box 2330  
Warman, SK S0K 4S0



# MOMENTUM

Speckle Park & Angus Bull & Female Sale



Located 35 km East of Saskatoon on Highway #5, turn North at Highway 671 towards St. Denis. Travel 6.5 km North and 0.8 km West.