

up next:

SPRING STORM

FROZEN GENETICS
ONLINE SALE

DLMS FARMGATE
FEBRUARY 15/16, 2025



Spring Storm

- Frozen Genetics Online Sale -

SALE HOSTED ONLINE VIA **DLMS FARMGATE**

WWW.FARMGATETIMEDACTIONS.CA

SATURDAY, FEBRUARY 15, 2025

SALE BEGINS AT 9:00 AM MST, 10:00 AM CST, 11:00 AM EST

SUNDAY, FEBRUARY 16, 2025

SALE CLOSSES AT 5:00 PM MST, 6:00 PM CST, 7:00 PM EST

Sale Management

T Bar C Cattle Co. Ltd.

Chris Poley 306-220-5006

Shane Michelson 403-363-9973

Ben Wright 519-374-3335

Levi Rimke 204-851-4515

Sale Day Phones

Mike Panasiuk 250-832-8209

Peterosa Exports

Roger Peters 403-828-9815

American Journal

David Hobbs 913-515-1215

DLMS

Mark Shologan 780-699-5082

www.springsidecattle.com

WELCOME FROM **SPRINGSIDE CATTLE**

At Springside Charolais, we believe that great genetics are meant to be shared. Over the past 40 years, we've worked diligently to develop a herd that exemplifies the best in Charolais breeding—power, performance, and predictability. Now we're excited to open our tank again and offer some of our most exceptional Embryos at the third annual SPRING STORM Online Frozen Genetics Sale!

This sale represents an incredible opportunity to invest in genetics that have propelled Springside to success. Whether you're a seasoned breeder looking to complement your program or a newcomer ready to establish a strong foundation for your herd, these embryos reflect our unwavering commitment to quality and the betterment of the Charolais breed.

The embryos in this offering are a selection from some of our most elite matings—pairings that combine powerful sires with our top-producing donor females. These matings were designed with one goal in mind: to create the next generation of cattle that will stand out in the show ring, thrive in the pasture, and leave a lasting legacy.

By sharing these genetics, we're not just selling embryos; we're fostering progress within the Charolais breed. We're thrilled to see these genetics go to work in herds across the country and make an impact for our fellow breeders.

Key Details:

- The online frozen embryo sale will run two days following our bull sale, exclusively on Farmgate Timed Auctions.
- All embryos & semen will be stored at Davis-Rairdan in Crossfield, and will be transferred and eligible for shipment immediately upon payment to ensure a seamless process for buyers.
- To preview the complete offering and get sale updates, please visit <https://www.farmgatetimeductions.ca/auction/27702> or head over to our website at www.springsidecattle.com.

Thank you for considering Springside genetics in your program. We look forward to working with you and let's continue raising the bar and moving the Charolais breed forward.

Warm regards,

Mike Panasiuk

Springside Cattle Co

FROM THE DESK AT T BAR C

The "White Blizzard" on the 15th of February will turn into an outstanding "Spring Storm" a storm that will not require shoveling or tow-trucks. Springside presents the "Frozen Genetics Online Sale" ...an event that you can view and participate in from the comfort of your easy chair. The remnants of this Spring Storm will affect Charolais breeding programs for many years to follow.

Over the past decade Springside operated an aggressive embryo program. The donor dams are predictably proven in fertility and production. The tanks are laden with exciting embryo matings using the newest and freshest sires available and this is Mike's way of sharing his years of experience of breeding Charolais. The embryos offer a diverse opportunity to get in on the "cutting-edge" genetics to move your program forward.

The "Spring Storm" offers a unique Charolais Shopping experience where you can acquire both embryos and semen from various genetic combinations for your up-and-coming breeding season... semen and eggs all in one tank.

We at T Bar C are very familiar with this program and the genetic makeups, if we may be of any assistance prior to or sale day, do not hesitate to call any of our team and we will be pleased to assist in a professional and confidential manner.

Chris Poley

SALE CREW

CHRIS 306-220-5006



SHANE 403-363-9973



BEN 519-374-3335



LEVI 204-851-4515

T Bar C Cattle Co. Ltd.
Phone 306-933-4200
Email info@tbarc.com
WWW.BUYAGRO.COM



HOW TO PARTICIPATE ONLINE

HOW TO PARTICIPATE IN A FARM GATE TIMED AUCTION

After you are at the Farm Gate Timed auction site click the **LOGIN/REGISTRATION** button.

FIRST TIME FARM GATE USERS:

- First time users will select the **REGISTER** button from this page. **Fill out the registration form to sign up for a free user account** - select a username and password for use on all Farm Gate Timed auctions. (please note due to some of the text notification features the Farm Gate Time Auction Site requires a new account separate from the DLMS Live sale site)

- After you create your Farm Gate account you will receive a text message with a pin code to verify your account.

- On your first log in to Farm Gate Timed auctions we recommend you go to your profile and **confirm notifications are set to YES**. This allows the site to send you text and/or email notifications when you are out-bid and if there is activity on your favorite lots.

RETURNING FARM GATE USERS:

- If you have used Farm Gate Timed auctions in the past simply enter your username & password to continue. After you have logged in you are able to browse the timed auctions on DLMS Farm Gate Timed Auctions.

HOW TO BID IN A TIMED AUCTION

Now that you are logged in and your account phone number/email is verified, you are able to bid on an upcoming sale. **Simply find the lot you are interested in bidding on**. There are 2 options for bidding on the lot.

- **Place Next Bid** - to place the next bid on the item, you set the amount in the first box, click the "Place Bid" button and after you review the bid and agree to the terms & conditions, your bid will be placed.

- **Max Bid Amount** - to place a max bid you put your max bid in the second box listed as "Max Bid" on the item, and then click the "Place Bid" button - after you review the bid and agree to the terms & conditions, your bid will be placed as the next bid. With the Max Bid placed the computer will then keep you as the high bidder to the max amount you have placed. This can be a great feature if you are not able to give 100% attention to the sale close out and protect your interest so you do not miss out on any lots you want to purchase. The Max Bid amount is completely confidential from the seller during the sale process.

Example of How the Max Bid Works - If the lot has a \$2000 bid on it and you

place a proxy bid of \$3500 into the system, the computer will bid \$2100 for you - but if some one else bids \$2200, the computer will again bid for you, this time at \$2300. The system will look after your interest to a maximum of \$3500. If another bidder is on at \$3600, your proxy will no longer be effective and you will no longer have the winning bid on this lot without once again logging in and bidding again or moving your attention to a second lot of interest. Please note that in some cases a lot value can change very quickly if 2 max bids are placed on the same lot competing against each other.

WATCH LIST FEATURE

If you have items in multiple auctions or only a few from the same auction that you want to watch without having to scroll through the entire list you can add the lots to your watchlist. On each lot you will see the "eye" button beside the bid button, by clicking this "watchlist" icon that item is added to your personal watchlist for easy viewing of just your favorite lots in this sale or on the entire site.

SALE ENDING / CLOSEOUT

Most Farm Gate Timed Auction sales close racehorse style with extended bidding. **WHAT IS RACEHORSE STYLE CLOSE?** Racehorse style sale close is when the entire sale stays open in extended bidding. This type of sale allows you as the bidder to change to a different lot within the same sale if the bidding has gone in to extended bidding.

HOW WILL EXTENDED BIDDING WORKS? When we get to the close out end time the clock for close extends with any bid placed with less than 5 min on the clock. This type of extended bidding turns the end time to more of a soft time. Extended bidding allows bidders to compete in lots like a real auction and give all bidders the same time to make a decision. Always follow the clock to see how much time remains in the sale you are interested in.

BIDDING CLOSE & FOLLOW-UP

After the clock has gone to "ENDED" and no bidding has occurred for 5 min the computer will declare the sale finished. Typically within 24 hours of the sale close the sale consignors will contact all winning bidders to arrange payment, transfer of pedigrees and delivery/pickup of your lot. Or as the winning bidding you can contact the sale consignors/sale manager to confirm payment instructions.

- Please make sure that your account info is up-to-date and correct, as this is how the billing is sent to the Sale Manager/Sale Consignor.



SVY *Historic* 241K

RS	MC859247 SVY 241K 2/22/2022 POLLED						
	BW 87	WW 798	BW -2.7	WW 83	YW 159	MM 23	CE 15.4

S: LT COUNTDOWN 9712 PLD BROBERG'S RSOURCE D20
LT MADELINE 6113 PLD

D: M6 MS NEW GERMAINE 484 P M6 NEW STANDARD 842 P ET
M6 COOL GERMAINE 1145 P ET

“ Historic is a bold, upheaded sire that commands attention with his power, dimension, and striking phenotype. From chest to hip, he exudes strength and balance. Backed by one of the most well-rounded profiles in the breed, he ranks in the top 5% for WW, YW, TSI, CW, and REA, making him an indispensable choice for balanced trait selection and herd improvement.
EMBRYOS SIRED BY HISTORIC AVAILABLE ON LOTS 1-10 ”

Reference Photos

- 1 SIRE** LT Countdown 9712 PLD
- 2 DAM** M6 MS New Germaine 484 P
- 3 FULL SISTER** SVY Ms Germaine 236K
\$80,000 High Seller in the 2023 Superstar Charolais Sale



TOP-RATED AI SIRES

Reference Sires



TR CAG Carbon Copy 7630E ET



SVY Mayfield 30H

RS TR CAG **Carbon Copy** 7630E ET

MC765363 JWX 7630E 3/4/2017 POLLED

BW	WW	BW	WW	YW	MM	CE
89	760	-2.3	62	62	18	14.9

S: RBM TR RHINESTONE Z38 LT BLUEGRASS 4017 P
HC RHINESTONE 5100
D: M&M MS CARBINE 1567 PLD M&M RAPTOR 8122 PLD
MS COOLEY JPOT 1107N9

RS SVY **Mayfield** 30H

MC792306 SVY 30H 3/2/2020 POLLED

BW	WW	BW	WW	YW	MM	CE
		0.9	75	75	28	2.9

S: CCC WC RESOURCE 417 P LT RUSHMORE 8060 PLD
WC CCC BLUE GIRL 1528 P
D: SVY MIA 424B D R REVELATION 467
EXL MIA 230M



WGD Ruger 8J



RBM Keystone H41

RS WGD **Ruger** 8J

MC816608 WGD 8J 1/4/2021 POLLED

BW	WW	BW	WW	YW	MM	CE
101	847	3	74	74	13	-2.6

S: LT RANSOM 8644 LT JOURNEY 5208 PLD
LT SHEILA 337 PLD
D: WGD THE CRUSH 14D JIL THUNDER ROLL 69Z
JIL LASSY 141X

RS RBM **Keystone** H41

MC859793 1/1/2020 POLLED

BW	WW	BW	WW	YW	MM	CE
76	697	-0.3	77	77	26	12

S: LT RUSHMORE 8060 PLD LT RIO BRAVO 3181 P
LT BRENDA'S EASE 3055PLD
D: RBM JASMINE F251 EC BIG DEAL 979 PLD
EC JASMINE 561 PLD



SOS *Desirae* PLD 7F

1	FC754223		SOS 7F	1/4/2018	POLLED		
	BW	WW	BW	WW	YW	MM	CE
	89	753	0.8	67	117	29	6.3

S: WINN MANS CHAVEZ 826Y MERIT 7329T
WINN MANS BREATHLESS 826U

D: PZC TR DESIRAE 012

CML DIABLO 2X
THOMAS MSTRADEMARK755 PET

“ SOS Desirae Pld 7F has established herself as a cornerstone of our embryo program. As a direct descendant of the legendary multi-time Supreme Champion PZC Desirae 012, owned by McLeod Livestock, she brings a proven pedigree to the table. No matter which pairing catches your eye, you can expect outstanding results and a strong return on your investment.
One pregnancy guaranteed per package. ”

Reference Photos

- 1 **DAUGHTER** SOS Desirae PLD 141J
Charolais National Reserve Junior Heifer Calf - CWA 2021
- 2 **SON** SOS Hefner PLD 33H
- 3 **DAUGHTER** SOS Desirae PLD 310L
Madge Farms' pick of the SOS 7F x WGD Ruger 8J calves

Lot One

FIVE PACKAGES OF SOS 7F EMBRYOS

Pairings with Historic, Countdown,
Carbon Copy, & Profound

SVY **Historic** 241K

LT COUNTDOWN 9712 PLD X M6 MS NEW GERMAINE 484 P

A One Package of Three Embryos
Qualified for USA

LT **Countdown** 9712 PLD

BROBERG'S RSOURCE D20 X LT MADELINE 6113 PLD

B One Package of Three Embryos
Qualified for USA

TR CAG **Carbon Copy** 7630E ET

RBM TR RHINESTONE Z38 X M&M MS CARBINE 1567 PLD

C One Package of Three Embryos
D One Package of Three Embryos
Qualified for USA

SVY **Profound** 145J

CCC WC REDEMPTION 7143 PLD ET X SVY STARSTRUCK 901G

E One Package of Three Embryos
Qualified for USA



LT Countdown 9712 PLD



SVY Profound 145J



SOS *Princess Kate* 33Y

2	FC396615 SOS 33Y 1/17/2011 POLLED					
	BW 90	WW 798	BW 1.9	WW 49	YW 91	MM 22

S: SDC KING RANCH 70T

HEJ RIPPER 66P
SDC MISS TULIPE 71J

D: SOS JESSICA 1150S

HTA CROWN PRINCE 152L
SOS JESSIE PLD 68L

“ This is your **LAST CHANCE EVER** to purchase embryos from the legendary SOS Princess Kate 33Y. At 14 years old, she remains as impressive as ever, cementing her status as the most influential cow in Springside history. Every mating with 33Y has been a home run—her sons have consistently topped our annual bull sale, while her daughters in production are proving their exceptional genetic value. Don't miss this rare chance to invest in the unparalleled legacy of 33Y and share in the success she continues to bring. **One pregnancy guaranteed per package.** ”

Reference Photos

- 1 **SON** SOS Luxor PLD 358L
High-Selling Bull in Canada, selling to Landaker Charolais for \$65,000 in the 2024 "Bulls for Every Budget" sale.
Full Sibling to Bourbon x SOS 33Y Embryos (Lot 2E)
- 2 **SON** SOS KG Glenfiddich PLD 389L (Bourbon x SOS 33Y)
- 3 **DAUGHTER** SOS Duchess 66F (Chuck Wagon x SOS 33Y)

Lot Two

THIRTEEN PACKAGES OF SOS 33Y EMBRYOS

Pairings with Historic, Jehu, Duty-Free, & Ruger

SVY **Historic** 241K

LT COUNTDOWN 9712 PLD X M6 MS NEW GERMAINE 484 P

2A One Package of Three Embryos

2B One Package of Three Embryos
Qualified for USA

SCX **Jehu** 233E

SCR TRIUMPH 2135 X SCX MISS MAGNUM 109X

2C One Package of Three Embryos

2D One Package of Three Embryos
Qualified for USA

TURNBULLS **Duty-Free** 358D

PLEASANT DAWN MVP 316Y X CTP MISS GOOGLE 358Z

2E One Package of Three Embryos

2F One Package of Three Embryos
Qualified for USA

WGD **Ruger** 8J

LT RANSOM 8644 X WGD THE CRUSH 14D

2G One Package of Three Embryos

2H One Package of Three Embryos
Qualified for USA



SCX Jehu 233E



Turnbulls Duty-Free 358D



SOS Princess Kate 33Y as a 3-Year-Old



SOS Princess Kate 33Y

LOT TWO - PAIRINGS WITH BOURBON, KICKSTART, HOULIO, CHAVEZ, & MAYFIELD



PCC Bourbon 118J



SOS Kickstart PLD 825K



Elder's Houlio 4H



Winn Mans Chavez 826Y

PCC **Bourbon** 118J

CCC WC REDEMPTION 7143 PLD ET X BRCHE BERKLY ANN 8507 PLD ET

2I One Package of Three Embryos
Qualified for USA

SOS **Kickstart** PLD 825K

SOS APEX PLD 139F X MISS PRAIRIE COVE 748E

2J One Package of Three Embryos
Qualified for USA

ELDER'S **Houlio** 4H

SKW EXPEDITION 89C X WRANGLER PRETTY LADY 98C

2K One Package of Three Embryos
Qualified for Domestic Use

WINN MANS **Chavez** 826Y

MERIT 7329T X WINN MANS BREATHLESS 826U

2L One Package of Three Embryos
Qualified for USA

SVY **Mayfield** 30H

CCC WC RESOURCE 417 P X SVY MIA 424B

2M One Package of Three Embryos
Qualified for USA



RC

SOS *Empress* 129H

3

FC808868 SOS 129H 2/16/2020 POLLED

BW 88	WW 666	BW -0.5	WW 63	YW 98	MM 21	CE 8.7
-----------------	------------------	-------------------	-----------------	-----------------	-----------------	------------------

S: ELDER'S CHANCELLOR 8019F^{WCR COMMISSIONER 593 P}
ELDER'S DUTCHESS 63D

D: SOS EMPRESS 48E
SPARROWS KINGSTON 139Y
SOS LOVE DRUNK 51W

Lot Three

FOUR PACKAGES OF SOS 129H EMBRYOS

- A** One Package of Three Embryos
SVY Historic 241K x SOS 129H - Qualified for USA
- B** One Package of Three Embryos
RBM Keystone H41 x SOS 129H - Qualified for USA
- C** One Package of Three Embryos
- D** One Package of Three Embryos

“ Just hitting her stride, SOS Empress 129H is proving her worth as a standout female. She represents four generations of exceptional flush cows renowned for their fertility and striking eye appeal. With matings to industry-leading sires like Historic and Keystone, these embryos are the opportunity to elevate your program with the cutting-edge Charolais genetics that you've been looking for. **One pregnancy guaranteed per package.** ”

REFERENCE PHOTOS
 1 **PROGENY** SKF 129M - \$17,000 at 2024 AB Charolais Select
 2 **DAM** SOS Empress 48E 3 **SIRE** Elder's Chancellor 8019F



AN WESTERN
AGRIBITION

Masterfeeds
an Altech company

CANADIAN WESTERN
AGRIBITION



SOS *Kardashian* PLD 798K

4	FC840003 SOS 798K 1/16/2022 POLLED						
	BW 90	WW 728	BW -1.8	WW 56	YW 111	MM 14	CE 11.4

S: BRCHE WHITE BEAR 8505 PLD ET M&M OUTSIDER 4003 PLD TR MS BERKLY 4711B ET

D: SOS JESSICAH 34B

WINN MANS CHAVEZ 826Y
SOS PRINCESS KATE 33Y

“ A granddaughter of the iconic 33Y and the renowned WhiteBear, the U.S. National Champion, “Kimmy” (SOS Kardashian 798K) earned her place in the donor program at a young age. Her genetics are already making waves, with a high-profile bull featured in the Bulls for Every Budget sale and exceptional calves on the ground at both Springside and Pinnacle View Charolais. Here’s your chance to multiply greatness and kickstart a revolution in your herd! **One pregnancy guaranteed per package.**

REFERENCE PHOTOS
1 **SIRE** BRCHE White Bear 8505 PLD ET
2 **DAM** SOS Jessicah 34B - \$41,000 to Mckearly Charolais
3 **798K** Kardashian as a calf

Lot Four

THREE PACKAGES OF SOS 798K EMBRYOS

- A** One Package of Three Embryos
SVY Historic 241K x SOS 798K - Qualified for USA
- B** One Package of Three Embryos
- C** One Package of Three Embryos
RBM Keystone H41 x SOS 798K - Qualified for USA



WGD *Miss Crush* 70K

5	FC839252 WGD 70K 1/12/2022 POLLED						
	BW 90	WW 734	BW -0.6	WW 58	YW 99	MM 19	CE 6.7

S: LT RANSOM 8644

LT JOURNEY 5208 PLD
LT SHEILA 337 PLD

D: WGD THE CRUSH 14D

JIL THUNDER ROLL 69Z
JIL LASSY 141X

Lot Five

SIX PACKAGES OF WGD 70K EMBRYOS

- A** One Package of Three Embryos
- B** One Package of Three Embryos
SVY Historic 241K x WGD 70K - Qualified for USA
- C** One Package of Three Embryos
- D** One Package of Three Embryos
SVY Mayfield 30H x WGD 70K - Qualified for USA
- E** One Package of Three Embryos
- F** One Package of Three Embryos

TR CAG Carbon Copy 7630E ET x WGD 70K - Qualified for USA

“ Miss Crush, a FULL SISTER to the exceptional Ruger, captured our attention as an impressive and sweet-natured two-year-old, quickly earning her spot in the donor pen. Her pedigree, stacked with time-honored breed legends, made her an undeniable candidate for the ET program. To say she surpassed expectations in her flush performance would be an understatement—her results have been nothing short of extraordinary. With genetics like hers, it’s no surprise she’s become a cornerstone of our embryo program. **One pregnancy guaranteed per package.** ”

REFERENCE PHOTOS

- 1 SIRE LT Ransom 8644
- 2 SULL SIBLING WGD Ruger 8J
- 3 FULL SIBLING WGD Miss Crush 67K



TMJF *Beryle* 447B

6	FC409856 TMJF 447B 1/17/2014 POLLED						
	BW 98	WW	BW -4	WW 70	YW 128	MM 2	CE 8

S: MERIT ROUNDUP 9508W

MXS VERMILLION 527R
MERIT YOLANDA 7244T

D: TMJF U-CALLED 198U

BALDRIDGE KOJACK 29K
TMJF PARIS 113P

“ With a few miles on the odometer, this remarkable female is still motoring along, embodying the longevity her pedigree is known for. Her legacy continues to grow as her daughters step into their prime, showcasing her enduring influence. Mated to some of the most exciting new herd sires, now is the perfect time to invest in a package of embryos from this true breed legend.
One pregnancy guaranteed per package. ”

Reference Photos

- 1 SON** SOS KG Revolver PLD 366L (WGD Ruger 8J x TMJF 447B) \$15,000 Half Sibling to Embryos
- 2 DAUGHTER** SOS Beryle PLD 811K (White Bear x TMJF 447B) \$67,500 Half Sibling to Embryos
Owned by Circle Cee Charolais & Sherwood Farms
- 3 SON** SOS Apex PLD 139F - Player's Club Champion

Lot Six

FOUR PACKAGES OF TMJF 447B EMBRYOS

Pairings with Historic, Gameday, & Carbon Copy

SVY **Historic** 241K

LT COUNTDOWN 9712 PLD X M6 MS NEW GERMAINE 484 P

A One Package of Three Embryos
Qualified for USA

LEGACYS **Game Day** 45G

LAE MEMPHIS 767E X LEGACYS DOMINO 52D

B One Package of Three Embryos
Qualified for USA

TR CAG **Carbon Copy** 7630E ET

RBM TR RHINESTONE Z38 X M&M MS CARBINE 1567 PLD

C One Package of Three Embryos
D One Package of Three Embryos
Qualified for USA



Legacys Game Day 45G



SOS Berlyle PLD 811K

SOS Beryle PLD 811K - Half Sister to Embryos

\$67,500 High Seller at the 2023 Superstar Charolais Sale





Masterfeeds®
an Alltech® company

Masterfeeds®
an Alltech® company



SHSH *Shania* 9E

7	FC724104 SHSH 9E 1/23/2017 POLLED						
	BW	WW	BW	WW	YW	MM	CE
	100	656	2.5	59	112	31	0.8

S: HRJ CROWD FAVOURITE 515C SPARROWS KINGSTON 139Y
HRJ MISS PARIS 7S

D: SHSH SHANIA 77U

DYV SVY RIO 17P
SHSH SHANIA 21S

“ SHSH Shania 9E is one of the most easy-keeping, fertile, and fleshy females we’ve ever had the privilege of owning. She exudes power and perfection, consistently passing these traits on to her offspring. Notably, her udder quality is exceptional, and her milk EPD ranks in the top 10% of the breed. If these are the qualities you value in your females, Shania 9E is a must-have addition to your program.
One pregnancy guaranteed per package. ”

Reference Photos

- 1 **SIRE** HRJ Crowd Favourite 515C
- 2 **DONOR DAM** SHSH Shania 9E Pasture Shot
- 3 **SON** SOS SHSH Heavy Duty PLD 835H

Lot Seven

FOUR PACKAGES OF SHSH 9E EMBRYOS

Pairings with Keystone, Countdown & Powermax

RBM **Keystone** H41

LT RUSHMORE 8060 PLD X RBM JASMINE F251

A One Package of Three Embryos
Qualified for USA



RBM Keystone H41

LT **Countdown** 9712 PLD

BROBERG'S RSOURCE D20 X LT MADELINE 6113 PLD

B One Package of Three Embryos
C One Package of Three Embryos
Qualified for USA



LT Countdown 9712 PLD

KEYS **Powermax** 57G

OW MAXIMIZER 3041 PLD X MISS KEY JERI 26E

D One Package of Three Embryos
Qualified for USA



KEYS Powermax 57G

FRENCH DIVISION

French Division

Full-French Influence: A Legacy of Quality and Performance

Our journey with Full-French genetics began in 2001, when we purchased our first French bull in Manitoba. We were immediately impressed by the exceptional muscling and meat yield he brought to our herd. It was clear there was a valuable place in our breeding program for the added performance and quality that French influence could provide.

When the renowned MLCC herd was dispersed, we saw the perfect opportunity to expand our French genetics. No expense was spared as we acquired cattle from the very top of their program, ensuring only the best would be added to our herd.

In the short time we've owned these genetics, these cows have proven their worth time and again. The production from these females has been nothing short of remarkable. We are now excited to offer embryos from our three best Full-French cows, bringing their outstanding qualities to your program. This is a rare opportunity to incorporate proven French influence into your herd, backed by years of dedication to excellence in Charolais genetics.



M&L *Golden* 11G

8	FFC775499 MLCC 11G		8/20/2019		DEHORND	
	BW 100	WW	BW 6.1	WW 53	YW 103	MM 22

S: PCFL MAXIMILIAN 106G

PCFL KARNAVAL 37E
PCFL FORTUNE 12Z

D: M&L XTRATIX

SNOOPY
PCFL REGINA 11M

“ Our Full French division has been an exciting and rewarding venture, offering incredible opportunities. French cattle are renowned for their superior carcass quality, and 11G exemplifies this, ranking in the top 1% for fat—one of the key reasons these cattle excel in the feedlot. Her pedigree reads like a who’s who of breed greats, including Snoopy, Till, and Montagnard. When you produce a \$50,000 herd bull, MLCC Khan 11K selling to Wilkie Charolais, it’s clear you’ve earned a place in the ET program. Don’t miss the chance to capitalize on these exceptional genetics! **One pregnancy guaranteed per package.** ”



11G PICTURED AS A THREE-YEAR-OLD

Lot Eight

EIGHT PACKAGES OF MLCC 11G EMBRYOS

Pairings with Cyrano, Springs Bounty,
PtitPrince, & Historic

Cyrano

VITTEL X QUARTERONNE

- A** One Package of Three Embryos
- B** One Package of Three Embryos
Qualified for Domestic Use

ECHO SPRINGS *Bounty* 123B

PCFL CHIEFTAN 25X X ECHO SPRINGS WORTHWHILE 112W

- C** One Package of Three Embryos
- D** One Package of Three Embryos
Qualified for Domestic Use

PT *Prince*

LINDEN PRINCE 32 X PT PANSY

- E** One Package of Three Embryos
- F** One Package of Three Embryos
Qualified for Domestic Use

SVY *Historic* 241K

LT COUNTDOWN 9712 PLD X M6 MS NEW GERMAINE 484 P

- G** One Package of Three Embryos
- H** One Package of Three Embryos
Qualified for USA



Cyrano



Full Sibling to Bounty



Echo Springs Worthwhile 60C

Full Sibling to Bounty 123B



M&L *Caleesi* 289E

9	FFC771220 MLCC 289E 4/28/2017 DEHORND						
	BW 100	WW	BW 3	WW 52	YW 105	MM 29	CE -2.3

S: M&L TREZEGOAL 268C

TREZEGOAL
M&L 268W

D: M&L CALEESI 189C

WR UGOTIT 144U
WR WANITA 189W

“ From the moment we purchased MLCC Caleesi 289E, the phone was ringing off the hook to buy progeny off of her - well here is your chance! In our eyes, she’s as close to perfect as it gets. With a superb disposition, ultimate foot and leg structure, and an udder that could rival any Hollywood celebrity’s dream, she truly stands out. Ranked in the top 10% of the breed for milk EPD, her genetic potential is unmatched. Don’t miss this opportunity—whether you get a bull or a heifer, these embryos are destined to produce herd-building greatness. **One pregnancy guaranteed per package.** ”

REFERENCE PHOTOS

- 1 **SON** SOS Novotel 137L - \$10,500 in 2024 Bull Sale
Half Brother to Embryos
- 2 **SON** SOS Trezegoal 103K 3 **SIRE** M&L Trezegoal 268C

Lot Nine

SIX PACKAGES OF MLCC 289E EMBRYOS

- A** One Package of Three Embryos
- B** One Package of Three Embryos
Echo Springs Bounty 123B x MLCC 289E - Qualified for Domestic Use
- C** One Package of Three Embryos
- D** One Package of Three Embryos
Cyrano x MLCC 289E - Qualified for Domestic Use
- E** One Package of Three Embryos
- F** One Package of Three Embryos
SVY Historic 241K x MLCC 289E - Qualified for USA



KERR *Miss Trickager* 832F

10	FFC753211 KERR 832F 1/21/2018 DETERMINED						
	BW 103	WW	BW 2.3	WW 49	YW 86	MM 25	CE -2.2

S: MAPLE LEAF HAT TRICK 165Y TREZEGOAL
MAPLE LEAF VYXYNN 802U

D: KERR MISS YAGERURTIS 447B ECHOSPRINGS YAGERBOMB 11Y
JR MISS HIS CURTIS 422 P

Lot Ten

SIX PACKAGES OF KERR 832F EMBRYOS

A One Package of Three Embryos

B One Package of Three Embryos

Echo Springs Bounty 123B x KERR 832F - Qualified for Domestic Use

C One Package of Three Embryos

D One Package of Three Embryos

Cyrano x KERR 832F - Qualified for Domestic Use

E One Package of Three Embryos

F One Package of Three Embryos

SVY Historic 241K x KERR 832F - Qualified for USA

“ During our tour of MLCC before Roger’s dispersal, KERR 832F immediately caught our attention. Roger himself noted that she would be an elite female—and he was absolutely right. Extremely feminine, incredibly broody, and heavy milking with an outstanding udder, this female exemplifies quality. Her exceptional fertility and impressive flush results have only added to her value. The French cattle bring a unique edge to any program, and KERR 832F is a prime example of why they’re worth the investment. **One pregnancy guaranteed per package.** ”

REFERENCE PHOTOS

1 **SERVICE SIRE** Echo Springs Bounty 123B

2 **SERVICE SIRE** Cyrano 3 **GRANDSIRE** Trezegoal

SEMIEN OFFERING

Semen Offering

PRIME OUTCROSS OPPORTUNITY

Incorporating genetics from industry-leading Charolais sires can elevate your breeding program to new heights. These sires are proven producers of progeny that excel in key traits like growth performance, carcass quality, and structural soundness.

They bring an unmatched balance of muscle expression, calving ease, and maternal strength, while enhancing herd uniformity and market appeal. Whether you're targeting heavier weaning weights, exceptional feed efficiency, or top-tier show-ring potential, these sires offer the genetic foundation to achieve your goals. Their influence will not only improve your current calf crop but will also add lasting value to your herd's legacy.



WC *Encompass* 0507 P

OFFERING FIVE PACKAGES OF FIVE STRAWS

M960657 0507 9/2/2020 POLLED

11	BW	WW	BW	WW	YW	MM	CE
	66	755	-2.6	101	171	34	13.3

S: WC INFERNO 6561 P

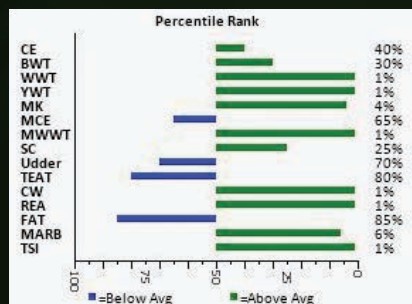
LT RUSHMORE 8060 PLD
WC ASTA 0505 P

D: WC DUTCHESS 7516 P

WC MILESTONE 5223 P
WC DUTCHESS 3517 P

WC Encompass is a bull who, when seen in person, is hard to fault - very good footed, well-muscled, and has some good length and volume to him. An added bonus is that Encompass is HOMO POLLED, PA FREE, and ranks in the 6th percentile within 8 EPD categories. He is a bull that Wrights speak very highly of, and are very excited about the calves they have on the ground in Missouri.

Consigned by W2 Farms.





SOS **Kickstart** PLD 825K
OFFERING FIVE PACKAGES OF TEN STRAWS

12	MC840002 SOS 825K 1/7/2022 POLLED						
	BW 97	WW 945	BW 0.2	WW 60	YW 112	MM 8	CE 5.2

S: SOS APEX PLD 139F LT LEDGER 0332 P **D:** MISS PRAIRIE COVE 748E ZKCC GAME ON 266Z
 TMJF BERYLE 447B MISS PRAIRIE COVE 407B

Reference Photos

- 1 **KICKSTART AT AGRIBITION** Grand Champion Bull
- 2 **DAM** Miss Prairie Cove 748E
- 3 **PATERNAL GRANDDAM** TMJF Beryle 447B
Embryos sell as lot 6

“ What an incredible impact SOS Kickstart 825K, the 2023 Agribition and BOSS Showbull of the Year, has had on our program! As the leadoff and high-selling bull in our 2023 sale to Stepler Farms, he has exceeded all expectations. His dam hails from the world-renowned PCC herd, famed for producing elite show cattle, bringing undeniable show ring quality to his pedigree. Combine that with added thickness and a kick of hair from his sire Apex, and you have the perfect formula for success. These calves are proof of his game-changing potential! **Consigned with Stepler Farms.** ”



SOS *Jackpot* PLD 158J

OFFERING FIVE PACKAGES OF TEN STRAWS

13	MC815944 SOS 158J 2/8/2021 POLLED						
	BW 81	WW 1075	BW 1.3	WW 79	YW 130	MM 33	CE -0.3

S: TURNBULLS DUTY-FREE 358D

PLEASANT DAWN MVP 316Y
CTP MISS GOOGLE 358Z

D: MXS EVERLY 816F

CEDARDALE ZEAL 125Z
MXS DITTO 656D

“The true measure of a herd bull lies in his ability to pass on his best qualities to his offspring, and Duty Free set the bar high here at SOS. But SOS Jackpot 158J is proving to take things to the next level. He’s consistently delivering polled, hairy, stylish cattle with undeniable eye appeal. Just ask Harvie Ranching, where three of their standout Jackpot daughters averaged nearly \$20,000 in their production sale—an incredible return on investment. We share the same excitement about his daughters in our herd. SOS Jackpot 158J is well on his way to becoming a breed legend. **Consigned with Landaker Charolais.**”

Reference Photos

- 1 **DAM** MXS Everly 816F
- 2 **DAUGHTER** HARVIE Ms Molson 19M
Olds Fall Classic - Reserve Grand Champion Female
Farmfair Int. - Divine Divas Champion & Intermediate Champion
Canadian Western Agribition - Reserve Senior Champion Heifer Calf
Owned by Elder Charolais, Rideau Angus Farms, & Harvie Ranching

14

M&L *Khan* 11K

FIVE PACKAGES OF TEN STRAWS

FMC830215 MLCC 11K 1/25/2022 DEHORND

BW	WW	BW	WW	YW	MM	CE
98		1.3	31	69	17	-8.8

S: CYRANO

VITTEL
QUARTERONNE

D: M&L GOLDEN 11G

PCFL MAXIMILIAN 106G
M&L XTRA11X

Qualified for Domestic Use

Attention French breeders—don't miss this opportunity! With limited French semen available for import into Canada, now is the time to enhance your program with MLCC Khan 11K. This Cyrano son was a \$50,000 Canadian high seller to Wilkie Charolais, and his first calves hitting the ground are proving to be exceptional. Backed by one of the strongest cow families in Canadian Full French history, Khan offers the muscle and power our performance-driven breed is known for. Purebred Charolais programs looking to add raw muscling and strength to their homo polled cows will find Khan 11K to be a game-changer. Add him to your spring breeding plans today! **Consigned with Wilkie Charolais.**



M&L Khan 11K

15

WGD *Ruger* 8J

FIVE PACKAGES OF TEN STRAWS

MC816608 WGD 8J 1/4/2021 POLLED

BW	WW	BW	WW	YW	MM	CE
101	847	3	74	133	13	-2.6

S: LT RANSOM 8644

LT JOURNEY 5208 PLD
LT SHEILA 337 PLD

D: WGD THE CRUSH 14D

JIL THUNDER ROLL 69Z
JIL LASSY 141X

Qualified for USA

As we begin calving Ruger daughters, it's clear they are destined to become collector's items. Ruger moves with the ease of a leopard, supported by a strong, well-structured foot. Those who've seen him consistently praise his impressive length, powerful lower quarter, and exceptional fleshing ability. Don't miss this chance—this will be one of the final opportunities to purchase Ruger semen. Secure a piece of his legacy for your program today! **Consigned with Daines O'Neill Livestock.**



WGD Ruger 8J

16

RRMM *Yellowstone* 2J

FIVE PACKAGES OF TEN STRAWS

MC814210 RRMM 2J 1/1/2021 POLLED

BW	WW	BW	WW	YW	MM	CE
75	-	-2.6	39	67	27	5.1

S: D R MONSOON 45

D R REVELATION 467
DR ALEXIS 412 ET

D: FVC GOLDIE 30G

SOS HOME GROWN 15C
SOS DWTS 23B

Qualified for Domestic Use

Yellowstone made an impression on us early, standing out on the show road as a calf. He consistently stamps his progeny with great hair, a calm disposition, and excellent feet and legs. As a true HEIFER bull, Yellowstone ranks in the top 15% for both birthweight and milk EPDs. If you're looking to breed a pen of heifers, Yellowstone 2J is an ideal choice. **Consigned with 7 Quarter Circle Charolais.**



RRMM Yellowstone 2J



SVY Trust 6H

17

SVY **Trust** 6H

FOUR PACKAGES OF TEN STRAWS

MC792307 SVY 6H 1/3/2020 POLLED

BW	WW	BW	WW	YW	MM	CE
97		1.7	59	101	19	-0.6

S: M6 BELLS & WHISTLES 258 P

M6 COOL REP 8108 ET
M6 MS GAIN & GRADE 552 P

D: SVY STARSTRUCK 409B

TR PZC MR TURTON 0794 ET
SVY STARSTRUCK 8X

Qualified for Domestic Use



Winchester Lock n Load Q1E

18

WINCHESTER **Lock n Load** Q1E

ONE PACKAGE OF TEN STRAWS

MC828544 GAVQ1E 2/13/2019 POLLED

BW	WW	BW	WW	YW	MM	CE
-	-	2.1	56	121	31	0.6

S: VENTURON MAXIMUM IMPACT

VENTURON KEYSTONE
VENTURON HILLARY

D: WINCHESTER HONOR H13E

EATONS ROYAL DYNASTY 6164
ROSEDALE HONOR X89

Qualified for USA



Elder's Houlio 4H

19

ELDER'S **Houlio** 4H

ONE PACKAGE OF SIX STRAWS

MC794847 KLR 4H 1/5/2020 POLLED

BW	WW	BW	WW	YW	MM	CE
98	762	1.9	65	137	40	4

S: SKW EXPEDITION 89C

LT SUNDANCE 2251 PLD
SKW EDISON 77Z

D: WRANGLER PRETTY LADY 98C

STEPPLER PRINCE GEORGE 43A
CIRCLE CEE FIREFLY 203Z

Qualified for Canada

20

LHD *Cigar* E46

1 PACKAGE OF FIVE STRAWS

M434790 LHDE46 15/2/1995 POLLED

BW	WW	BW	WW	YW	MM	CE
92	925	2.3	57	95	20	2.7

S: LHD MR PERFECT Y416

WCR SIR PERFECTION 734
LHD MS SHOWME OFF W159

D: HD MS CLASSIC BELL X613

LHD MR BELLMARK R113
OCR CLASSIC QUEEN 46N

Qualified for Canada



LHD Cigar E46

21

KASS/CJB *Famous* 6038 ET

ONE PACKAGE OF SEVEN STRAWS

MC735855 SVY 6038D 3/20/2016 POLLED

BW	WW	BW	WW	YW	MM	CE
		5.6	75	131	8	-9.3

S: KASS/CJB QUIET RIOT ET

KASS JAXSON WT38ET
LC MS WIND 5033 PET

D: KASS MS JOSIE T38

HOODOO SLASHER 1144
KASS RUMOR R80 PLD

Qualified for Domestic Use



KASS/CJB Famous 6038 ET

TERMS & CONDITIONS

Terms: The terms of the sale are cash or cheque, payable at par at the sale location. The right of property shall not pass until after settlement has been made; no invoicing on buyers in attendance, unless previous arrangements have been made. Every animal sells to the highest bidder and in cases of disputes, the auctioneer's decision will be final. Current exchange rates will be announced sale day. All monies are in Canadian funds.

Bidding: Each animal will sell to the highest bidder... no by-bidding will be permitted. Disputes - Bidding will be reopened between the parties involved in dispute. If no further bidding is made, the buyer will be the person from whom the auctioneer accepted the last bid. The auctioneer's decision on all disputes will be final.

Announcements: All announcements made from the auction block will take precedence over the printed matter in the catalogue. Buyers are therefore cautioned to pay close attention to such disclosures.

Breeder's Guarantee: Should any bull fourteen (14) months of age or over fail to prove a breeder after being used on females known to be breeders, the matter shall be reported in writing to the seller within six (6) months following the date of purchase or six (6) months after the bull has reached fourteen (14) months of age. The seller will have the right and privilege of six (6) months to prove the bull a breeder. No guarantee is given that semen collected from the bull will freeze.

Exception Guarantee: In cases where the animal is subjected to any hormonal or surgical reproduction techniques after the sale, this guarantee shall be null and void.

Certificate of Registration: Each animal will carry papers issued by the Canadian Charolais Association. A certificate of registry duly transferred will be furnished to the buyer for each animal after payment has been made.

Phone, Mail, Wire Bids: Bidders unable to attend the sale may phone, wire or mail their bids and instructions to the sale managers, auctioneer or special representatives. Bids must be received in sufficient time prior to the sale.

Delivery: We will assist in arranging transportation wherever possible. Each animal becomes the risk of the purchaser as soon as sold.

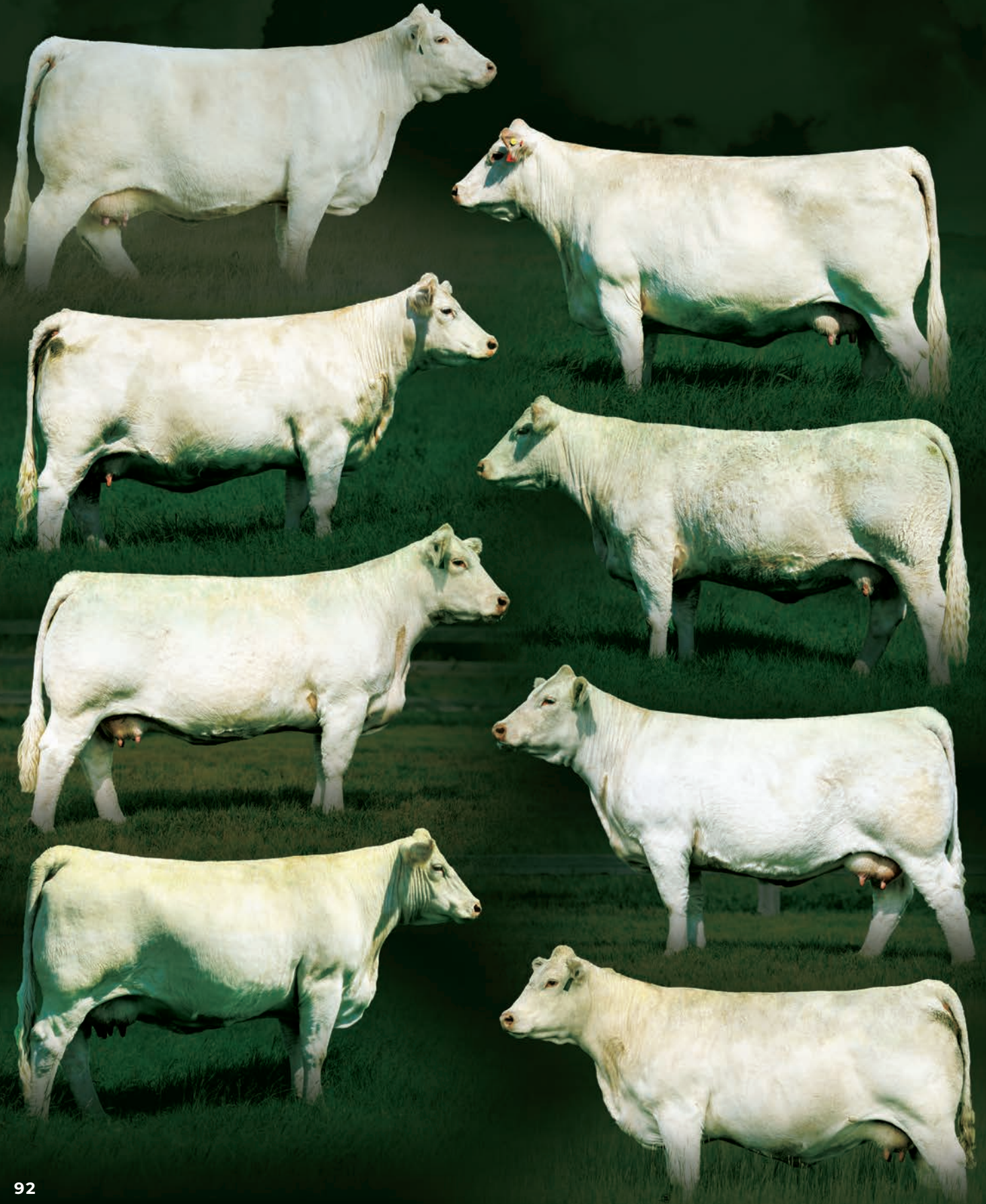
Insurance: Will be available sale day. We strongly recommend that insurance is purchased for full value.

Liabilities: All persons attend the sale at their own risk. The seller, facility owner and sale manager assume no liability, legal or otherwise, for any accidents that occur. It is understood that T Bar C Cattle Co. (2013) Ltd. is acting only as a medium between buyer and seller and is not responsible for any failure on the part of either party to live up to his obligations. Neither does T Bar C Cattle Co. (2013) Ltd. assume any financial obligations to collect or enforce collection of any monies between parties and any legal action that may in exceptional cases be taken must be between the buyer and the seller. T Bar C Cattle Co. (2013) Ltd. assumes no responsibility for any credit extended by the seller to the buyer. The buyer must look to the seller for fulfillment of all guarantees and representations made hereunder.

Rights and Obligations: The above terms and conditions of the sale shall constitute a contract between the buyer and seller and be equally binding to both. Resale of animals following purchase in this sale shall constitute a separate transaction and the rights and obligations of the two parties connected thereto are not covered by the terms and conditions of this sale.

Errors: All announcements at sale time, written or oral, supercede any written material in the catalogue.

Building Legends





One Embryo At A Time



SOS 393K - MB Ag-EX 2023



PJP SOS BEYOND WORDS 21J



SOS CORTANA 19J



SOS POLARBÉAR 47J



BREEDERS HERD - 88J, 47J, 825K, 813K



KG TRUE GRIT 1K



SOS KICKSTART PLD 825K



SOS MARVEL PLD 438M



SOS KG GLENFIDDICH PLD 389L



SOS KG REVOLVER PLD 366L



SOS LUXOR PLD 358L



SOS MARIACHI PLD 206M



SOS MATRIX PLD 955M



SOS KARDASHIAN PLD 798K



SOS MOROCCO PLD 495M



SOS DESIRAE PLD 310L

LET US HELP YOU ACHIEVE THE SUCCESS YOU DESERVE.
YOUR FUTURE STARTS HERE.

Springside Cattle Co.

**Return Undeliverable
Canadian Addresses To:**

T Bar C Cattle Co. Ltd.
Box 2330
Warman, SK S0K 4S0



www.springsidecattle.com