



APRIL 29-30, 2024 | DLMS FARMGATE

SPRING

ONLINE ANGUS GENETICS SALE

Hling

FEATURING THE EXCLUSIVE OPPORTUNITY TO ACCESS HF III - COUNTRY 7L

APRIL 29-30, 2024 | DLMS FARMGATE

SPRING

ONLINE ANGUS GENETICS SALE

Fling



CHRIS POLEY
306-220-5006



BEN WRIGHT
519-374-3335



SHANE MICHELSON
403-363-9973



LEVI RIMKE
204-851-4515



Timed Auctions Made Easy

MARK SHOLOGAN
780-699-5082

NOTE:

Package of three embryos guarantees one pregnancy.
Package of 4-5 embryos guarantees one pregnancy.
Guarantees are contingent on embryos being implanted by a certified technician.

It is the responsibility of the buyer to contact the seller to arrange release and shipping.

Over some time now we have been implementing these genetic online sales of the industry leaders amongst certain breeds. But never before have we offered such an elite and current to the times offering like Spring Fling '24. Of course headed by the most talked about bull all Spring, Hi Country. We encourage you to browse the entire offering as we feel all the ingredients are here to make an impact on your breeding decisions and program. Shipping on the entire offering can happen very promptly and as always if you have any questions please don't hold back contacting any of us at T Bar.

Ben Wright





HR 213
7-L



HF HI-COUNTRY 7L

2338468 | HAMI 7L | 02/01/2023

ELLINGSON RANGELAND
ELLINGSON HI-RANGE
EA EMBLYNETTE 9473

X

SCHIEFELBEIN SHOWMAN 338
HF TIBBIE 21J
HF TIBBIE 215B

BW: -1.3 || WW: 81 || YW: 141 || MILK: 35 || \$C: 258

LOT 1 || FIVE PACKAGES OF THREE UNITS

EPITOME OF ANGUS

The only semen to be sold for the 2024 breeding season!

It's been a significant amount of time since we've seen or heard of a bull like Hi Country 7L come on to the Angus scene. When one makes plans to go forward and pursue a bull of this caliber you ask yourself these questions

- 1 - What's his mother like?
- 2 - What are his feet and history of feet in his pedigree like?
- 3 - Quality of his sire, and the rest of his offspring?
- 4 - Phenotype and masculinity?
- 5 - EPDs and number evaluation like BW, scrotal & actual weight ?

These are the answers to those most important questions that we came up with in our research:

- 1 - Incredible mother and impeccable udder with Hi-Country being her first effort
- 2 - Big, full feet with loads of heel, with many 3/4 brothers in the same sale with the same quality
- 3 - His sire Hi Range is not only exclusive but is outcross and had 23 sons average \$30,630 at the recent Hamilton sale, and a daughter top the CWA sale at \$50,000
- 4 - Hi-Country is big crested, big backed with hair and has that ultimate herdbull presence.
- 5 - All the numbers are in the right place. A negative BW with loads of performance and heifer approved. Large 40 CM scrotal and 1600 lb sale day weight. Also his \$C is amongst the top of the entire breed.

These are just some of the reasons he commanded a \$185,000 sale price. If embryo transfer is in your future or breeding your very top cow, we urge you to consider Hi Country

Consigned by Strongbow Farms, Peak Dot Ranch, River Valley Cattle Co. and Hamilton Farms.

Carson Moneo: 306-266-4414, Clay Moneo: 306-266-4411, Rob Hamilton: 403-540-3186





“ A milestone is a *significant* event in your life. Often a milestone marks the *start of a new chapter.*”

Milestone is the \$40,000 high selling son of the 2023 Canadian Western Agribition Grand Champion bull Greenwood Four Mile 47J. One of the most popular well received Agribition Champions in recent times. Milestone is a major league herd prospect representing everything we look for in a herd bull. He is super attractive, easy fleshing and nice fronted with a tremendous angus skull. He offers depth of body, nice muscle shape and tremendous bone structure. Very impressive from all angles. He is the complete package, and the way he struts through the pen he knows it too!! Starting out a modest 79lbs with an adjusted weight of 802lbs and an impressive 1518 lbs yearling weight. We love the way this bull is bred up with several generations of cow power stacked on top and bottom. His impressive dam is a two year old Bar E-L Stamina daughter that is very deep bodied and ideal uddered. This is an opportunity to get in early on this exciting new up and coming Peak Dot herd sire. He truly is “the start of a new chapter.”

Semen is stored at Bovigen.

Consigned by Peak Dot Ranch.

Carson: 306-266-4414

Clay: 306-266-4411



TER-ROX MILESTONE 56L

2326569 | HFX 56L | 19/01/2023

U-2 COALITION 206C
GREENWOOD FOUR MILE 47J X **BAR-E-L STAMINA 112F**
 RRD TIBBIE 28Z **TER-ROX DIXIE ERICA 42J**
 KT DIXIE ERICA 9028G

BW: 2.0 || WW: 69 || YW: 128 || MILK: 27

LOT 2 || TWO PACKAGES OF FIVE UNITS



Sire



SCHIEFELBEIN PONDEROSA 1122

2329363 | IMP 1122K | 01/02/2022

CONNELY DRY VALLEY
CONNELY BIG VALLEY
BUNTY LAY OF CONANGA 4930

MOGCK ENTICE
X FROSTY ELBA LIZZY 480
FROSTY ELBA LIZZY 1268

BW: 1.4 || WW: 88 || YW: 157 || MILK: 29

LOT 3 || ONE PACKAGE OF FIVE UNITS

Ponderosa, the bull that is on the radar of the Angus World and already has begun to write his own chapter in Angus History. He started as the popular high selling bull out of the 2023 Schiefelbein Farms Bull Sale where he was regarded as the thickest Angus Bull in existence. He went on to set new records every time his semen sells and the demand and momentum continued on with Ponderosa embryos selling for \$3750 per embryo in past sales. Never before has there been a time or a push in History to get back to good functional, deep-bodied, correct cattle. Ponderosa is leading the charge with his mass, performance and fleshing ability while adding style and balance. If you are looking for that special bull to breed your best donors to or if you have a pen of outstanding replacement heifers to breed, consider Ponderosa as he will add not only quality but also add \$ value to every future mating.

Semen is stored on farm.

Consigned by Peak Dot Ranch Ltd.

Carson: 306-266-4414, Clay: 306-266-4411



PEAK DOT BOOST 162K

2249430 | PDAR 162K | 26/01/2022

MUSGRAVE 316 COLOSSAL 137

PEAK DOT BOOST 137H

PEAK DOT ERICA 738B

X

HOOVER NO DOUBT

PEAK DOT DUCHESS 27H

DUCHESS OF PEAK DOT 155Y

BW: 3.7 || WW: 79 || YW: 143 || MILK: 20

LOT 4 || TWO PACKAGES OF FIVE UNITS



Dam

Peak Dot Boost 162K was the \$80,000 top selling bull from our 2023 Spring Sale to Eaglehawk Angus Australia. Boost 162K is a low birth weight bull that will also add some real pounds to your calf crop and dollars to your bottom line. You will love the look of this bull. He displays real muscle, capacity, softness and substance with powerful phenotype. He weaned off at 911lbs to earn a weaning ratio of 114. He is off a great looking No Doubt daughter with a nice udder and his grandam earned Elite Dam status with the Canadian Angus Association. Peak Dot Boost 162K comes with a ton of performance packed into a moderate frame. Peak Dot Boost 162K made several friends while down at World West Sires in Billings MT and semen has already sold to Musgrave Angus and some of the most prestigious herds in the USA. You will be hearing a lot from this bull in the next few years. **Semen stored at World West Sires and Alta. Consigned by Peak Dot Ranch Ltd. Carson: 306-266-4414, Clay: 306-266-4411**



RAVEN RECTIFY J156

2329357 | IMP 156K | 14/01/2022

MOHNEN SUBSTANTIAL 272
SITZ STELLAR 726D
SITZ PRIDE 200B

X

WOODHILL RELEVANCE
RAVEN BLACKBIRD H403
RAVEN BLACKBIRD 162

BW: 0.5 || WW: 82 || YW: 143 || MILK: 25

LOT 5 || ONE PACKAGE OF FIVE UNITS

Rectify is an exciting new herdsire at Peak Dot Ranch, he offers calving-ease and performance with outstanding maternal pedigree and bred in longevity. Rectify is a thick topped, deep sided, soft made, good headed and comes with great feet and excellent scrotal that the Sitz Stellar sons are know for. He weaned off at 845lbs and holds a \$ Weaning index in the top 3% of the breed. His dam is phenotypically outstanding and was the pick of the 2021 Raven Angus herd selling to Simon Cattle Co. His productive grandam is 11 years old and looks like she will live and produce for another 11 years. His great grandam is a 13 year old Pathfinder at Raven Angus.

Semen is stored at Bovigen.

Consigned by Peak Dot Ranch Ltd.

Carson: 306-266-4414, Clay: 306-266-4411

A black cow is shown in profile, standing in a field with a fence in the background. The cow is the central focus of the image. The background is a bright, overexposed outdoor setting with a fence and some trees. The cow is standing on a patch of dry grass.

REC·TI·FY to put right, correct



GOLDEN OAK 0807 HOLLYWOOD 210K

2250106 | GO 210K | 03/01/2022

BC SURVEYOR 680D

BC ROBUST 0807

BC 327-8 CP BELLE O-807

X

BAR-E-L CALDWELL 9C

BAR-E-L BIG SEXY 90E

DFCC 33T BIG SEXY 45Y

BW: 1.0 || WW: 56 || YW: 88 || MILK: 21

LOT 6 || TWO PACKAGES OF FIVE UNITS

We are so excited about Hollywood's future. Hollywood sold for \$45,000 to Pine Coulee Angus and Koupal Angus at the 2022 Cattle in the Snow sale. He has continued to develop into a herdsire like we knew he would. It's rare to find a bull with so much hip and sweep to his middle while maintaining so much correctness and style throughout. Backed by a powerhouse for a mom, with half interest selling for \$45,000 to Allison farms in the 2023 Cattle in The Snow. Hollywood will have a very bright future in the Angus breed. **Consigned by Golden Oak Livestock, Pine Coulee Angus, and Koupal Angus.** Tom McNeely: 780-679-7220



Dam

Hollywood
is a factory





FLUSH ON YOUR PICK OF THE 2024 PEAK DOT DONORS

With option to flush to any of the Peak Dot Sires Hi Country, Ponderosa, Milestone, Rectify, Boost

LOT 7

Options include Erica of Peak Dot 736B and Peak Dot Erica 40E. These two full sisters sired by Unanimous are second generation donors. They are direct daughter from our all time high income producing cow on the ranch Erica of Peak Dot 478U. Erica of Peak Dot 478U currently has 54 progeny and is the dam or grandam of several noted sires such as Alta sires Peak Dot Prime and Peak Dot Country and top sellers Peak Dot Attractive 186F and Peak Dot Boost 137H. Erica of Peak Dot 736B is the dam of the \$110,000 Peak Dot Outcome to Alta Genetics and has also raised several daughters that we have retained in the herd. Peak Dot Erica 40E was chosen to continue on the Erica Legacy. She is a proven producer with great feet, an exceptional udder and that soft easy fleshing body type that we like to replicate over and over.

Other options include Peak Dot Heather 248H. This stunning female is a daughter of Peak Dot Seedstock 38F and is truly a spectacular cow, sweet fronted, feminine, a flawless phenotype and a great udder with excellent teat placement. She has been a female that several visitors to the ranch have identified and picked out as a favorite and one we would certainly like to replicate over and over again. Her No Doubt dam has been making a impact here as well she is a top producing No Doubt daughter with a big massive hip and a great look. She currently has one of the most impressive heifers in the replacement pen sired by Peak Dot Belfast.

Another excellent option is Peak Dot Lady 2044H. She has been a favorite ever since she was a calf. She has grown into a long bodied, deep sided cow with a beautiful udder, massive hip and a great look. Her Big River bull calf was a feature in our 2023 Spring Bull Sale and we retained a excellent Brutus daughter out of her this year. The maternal side of this cow is stacked with generations of great females stemming back to Lady of Peak Dot 402U, a popular donor with 64 progeny.

Peak Dot Barbara 807H is a female that needs no introduction. This past year her embryos have been sold to several of the top herds throughout Canada and the United States. Peak Dot Barbara 807H is a model female from our program. Perfect udder, perfect feet, long level hip, wide based and very sound structured. She has top ranking hoof EPDs and ranks in the very top 2% of the breed for Heifer Pregnancy EPD. Her dam Peak Dot Barbara 483A is a proven donor with 36 progeny.

Consigned by Peak Dot Ranch. Carson: 306-266-4414, Clay: 306-266-4411



Erica of Peak Dot 47SU / Mother of many donor dams





HI-COUNTRY X LADY

Maternally Stacked

ELLINGSON HI-RANGE
HF HI-COUNTRY 7L
HF TIBBIE 21J

X

MUSGRAVE 316 COLOSSAL 137
PEAK DOT LADY 2044H
PEAK DOT LADY 2067D

PE BW: 0.0 || WW: 74 || YW: 124 || MILK: 27

LOT 8 || ONE PACKAGE OF THREE EMBRYOS

Peak Dot Lady 2044H has been a favorite ever since she was a calf. She has grown into a long bodied, deep sided cow with a beautiful udder, massive hip and a great look. Her Big River bull calf was a feature in our 2023 Spring Bull Sale and we retained a excellent Brutus daughter out of her this past year. The maternal side of this cow is stacked with generations of great females stemming back to Lady of Peak Dot 402U, a popular donor with 64 progeny. This is a great mating here and it will leave some highly productive females.

Embryos are stored at DRI.

Consigned by Peak Dot Ranch Ltd.

Carson: 306-266-4414, Clay: 306-266-4411



This stunning female is a daughter of Peak Dot Seedstock 38F and is truly a spectacular cow, sweet fronted, feminine, a flawless phenotype and a great udder with excellent teat placement. She has been a female that several visitors to the ranch have identified and picked out as a favorite and one we would certainly like to replicate over and over again. Her No Doubt dam has been making an impact here as well she is a top producing No Doubt daughter with a big massive hip and a great look. She currently has one of the most impressive heifers in the replacement pen sired by Peak Dot Belfast.

Embryos are stored at DRI.

Consigned by Peak Dot Ranch Ltd.

Carson: 306-266-4414, Clay: 306-266-4411

HI-COUNTRY X HEATHER

A Herd Favourite

ELLINGSON HI-RANGE

HF HI-COUNTRY 7L

HF TIBBIE 21J



PEAK DOT SEEDSTOCK 38F

PEAK DOT HEATHER 248H

PEAK DOT HEATHER 32F

PE BW: 0.2 || WW: 65 || YW: 119 || MILK: 28

LOT 9 || ONE PACKAGE OF THREE EMBRYOS



HI-COUNTRY X ERICA

Good to us

ELLINGSON HI-RANGE
HF HI-COUNTRY 7L
HF TIBBIE 21J



VISION UNANIMOUS 1418
PEAK DOT ERICA 736B
ERICA OF PEAK DOT 478U

PE BW: 1.4 || WW: 75 || YW: 133 || MILK: 30

LOT 10 || ONE PACKAGE OF THREE EMBRYOS

Erica of Peak Dot 736B has been an extremely good female for us. She is the dam of the \$110,000 Peak Dot Outcome to Alta Genetics and has also raised several daughters that we have retained in the herd. She has lots of body and dimension and is very good footed. She is a direct daughter from our all time high income producing cow on the ranch Erica of Peak Dot 478U. 478U currently has 54 progeny and is the dam or grandam of several noted sires such as Alta sires Peak Dot Prime and Peak Dot Country and top sellers Peak Dot Attractive 186F and Peak Dot Boost 137H. Erica of Peak Dot 736B throws extra performance into her calves and we are extremely excited about this mating. Embryos are stored at DRI.

Consigned by Peak Dot Ranch Ltd. Carson: 306-266-4414, Clay: 306-266-4411



Peak Dot Erica 40E is a second generation donor and direct daughter from our all time high income producing cow on the ranch Erica of Peak Dot 478U. Erica of Peak Dot 478U currently has 54 progeny and is the dam or grandam of several noted sires such as Alta sires Peak Dot Prime and Peak Dot Country and top sellers Peak Dot Attractive 186F and Peak Dot Boost 137H. Peak Dot Erica 40E was chosen to continue on the Erica Legacy. She is a proven producer with great feet, an exceptional udder and that soft easy fleshing body type that we like to replicate over and over. Her mating to our new HF Hi-Country bull should result in progeny that are easy to look at and even easier to sell!

Embryos are stored at DRI.

Consigned by Peak Dot Ranch Ltd. Carson: 306-266-4414, Clay: 306-266-4411

HI-COUNTRY X ERICA

Proven Producer

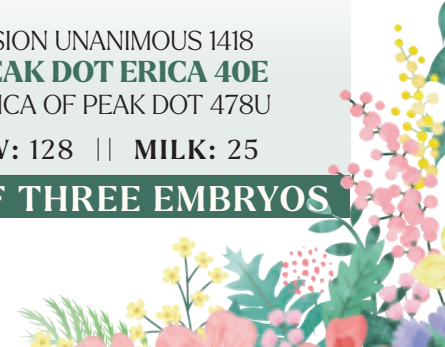
ELLINGSON HI-RANGE
HF HI-COUNTRY 7L
 HF TIBBIE 21J



VISION UNANIMOUS 1418
PEAK DOT ERICA 40E
 ERICA OF PEAK DOT 478U

PE BW: 1.4 || WW: 72 || YW: 128 || MILK: 25

LOT 11 || ONE PACKAGE OF THREE EMBRYOS





PONDEROSA X BARBARA

Needs no intro

CONNEALY BIG VALLEY
SCHIEFELBEIN PONDEROSA 1122 X ELLINGSON PROFOUND 8155
FROSTY ELBA LIZZY 480 **PEAK DOT BARBARA 807H**
PEAK DOT BARBARA 483A

PE BW: 2.6 || WW: 81 || YW: 137 || MILK: 24

LOT 12 || ONE PACKAGE OF FIVE EMBRYOS

Peak Dot Barbara 807H is a female that needs no introduction. This past year her embryos have been sold to several of the top herds throughout Canada and the United States. Peak Dot Barbara 807H is a model female from our program. Perfect udder, perfect feet, long level hip, wide based and very sound structured. She has top ranking hoof EPDs and ranks in the very top 2% of the breed for Heifer Pregnancy EPD. Her dam Peak Dot Barbara 483A is a proven donor with 36 progeny. Peak Dot Barbara 807H has been mated up with some of the most exciting sires in the past including Hi-Country, Gable, SAV Magnum and Big River with excellent results. This is the first time we had the opportunity to mate her with popular Ponderosa. We believe this mating puts together as much phenotype, pedigree and wow factor that you can put in an Angus animal, hence we only offering up five embryos and keeping the rest.

Embryos are stored at Bovigen.

Consigned by Peak Dot Ranch Ltd. Carson: 306-266-4414, Clay: 306-266-4411



Regarded as the most gorgeous phenotype female of the JL dispersal where she garnered a \$20,000 price tag. Count ahead 4 years later 6354 is re sold through the Eastern Extravaganza for the same math but since has been on a tear for production records. There is over 12 offspring born this year alone that are destined for greatness along with another 6 last year. 6354 comes from that famed Blackcap May family and is poised to make a lot noise this coming year with her offspring. Mated to Bravo for more maternal satisfaction, this will flat work.

Embryos are stored on farm.

Consigned by Worth-Mor Cattle and 719 Cattle.

Kyle Petherick: 705-768-3560



BRAVO X BLACKCAP MAY

Cow Power

COLEMAN CHARLO 0256
COLEMAN BRAVO 6313 X S A V DOUBLE DIGIT 2799
 COLEMAN DONNA 714 **JL BLACKCAP MAY 6354**
 JL BLACKCAP MAY 2294

PE BW: 0.5 || WW: 56 || YW: 103 || MILK: 30

LOT 13 || ONE PACKAGE OF THREE EMBRYOS



PRESIDENT X EVENING TINGE

Long production record

COLEMAN CHARLO 0256
S A V PRESIDENT 6847
 S A V BLACKCAP MAY 4136

X

S A V ELIMINATOR 9105
JL EVENING TINGE 3618
 HF EVENING TINGE 57R

PE BW: 2.4 || WW: 55 || YW: 93 || MILK: 29

LOT 14A || ONE PACKAGE OF TWO EMBRYOS

An absolute beast as a past JL high seller from the famed 57R herself. Big, broad based female that has a production record long as a wet week with notable daughters commanding \$42,000 (full sib to President eggs) and \$20,000 to Otter Creek. All in all this now deceased female just makes it happen. Note her maternal sister is the lot 14 female as well.

Stored at Heartland Vet Services. Consigned by Rehorst Farms Ltd. Adrian: 519-357-7077

REGARD X EVENING TINGE

Make it happen

S A V RESOURCE 1441
S A V REGARD 4863
 S A V BLACKCAP MAY 5530

X

S A V ELIMINATOR 9105
JL EVENING TINGE 3618
 HF EVENING TINGE 57R

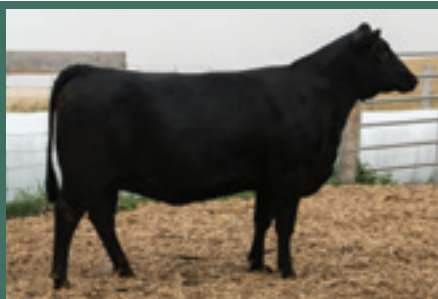
PE BW: 3.9 || WW: 60 || YW: 101 || MILK: 29

LOT 14B || ONE PACKAGE OF TWO EMBRYOS



An own daughter of the legendary 57R that can get it done. The Evening Tinge cattle have more jam than most and this female posses that big hip extra frame that has come back in demand. Look for President to maintain that big wedgy body shape With maternal values and let the Tingings add value to your program!

Stored at Heartland Vet Services.
Consigned by Rehorst Farms Ltd.
Adrian: 519-357-7077



3617 Daughter, Past AAC High Seller

PRESIDENT X EVENING TINGE

Value Added

COLEMAN CHARLO 0256 S A V POTENTIAL 0205
S A V PRESIDENT 6847 X **JL EVENING TINGE 3617**
 S A V BLACKCAP MAY 4136 HF EVENING TINGE 57R

PE BW: 3.3 || WW: 64 || YW: 108 || MILK: 27

LOT 15 || ONE PACKAGE OF FIVE EMBRYOS



ROCK X GRACE

Famed pedigree

O C C JUNEAU 807J YOUNG DALE PANARAMA 66T
COLEMAN ROCK 7200 X **YOUNG DALE GRACE 126Z**
COLEMAN DONNA 714 YOUNG DALE GRACE 19T

PE BW: - || WW: - || YW: - || MILK: -

LOT 16 || TWO PACKAGES OF THREE EMBRYOS

Grace 126Z has forged her path to being one of the premier dams in the entire Angus breed by way of raising some of the highest valued and most highly regarded sons and daughters in the game. Of course, some of her greatest efforts include the \$146,000 Believe and the \$104,000 Defiance. A son recently sold at the famed Lindskov sale for an \$80,000 evaluation. The low birth and high growth “cattlemen’s kind” Coleman Rock is a full brother to Coleman Donna 063, who was the top selling female in 2016 at \$80,000 to Lawson Farms. He also stems back to the legendary Coleman Donna 714, a \$290,000 record seller and one of the top earners in the Coleman program. All of the research is done here on these breed giants.

Embryos are stored at Peak Veterinary Health.

Consigned by Young Dale Angus and Angus Valley. Barry: 306-482-7952



Son



Daughter

Reckoning stems from a long line of show ring standouts, with he himself being the Intermediate Angus Champion at OKC and the NAILE. Extremely upheaded and flashy in his design with ultra-flexible joints and three dimensional makeup. Progeny continue to impress with their extra look and construction.

Embryos are stored at Alta Genetics. Consigned by 719 Cattle. Ben: 519-374-3335

HILL VALLEY RECKONING 931

2196725 | IMP 931G | 04/05/2019

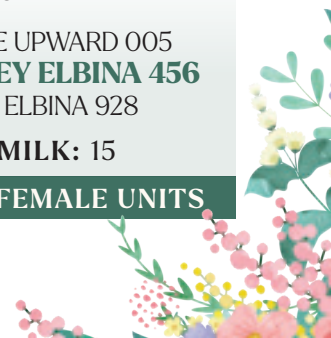
YOUNG DALE XCALIBER 32X
YOUNG DALE BELIEVE 46B
 YOUNG DALE GRACE 126Z



MILL COULEE UPWARD 005
HILL VALLEY ELBINA 456
 HILL VALLEY ELBINA 928

BW: 4.3 || WW: 72 || YW: 122 || MILK: 15

LOT 17 || ONE PACKAGE OF FIVE SEXED FEMALE UNITS





S A V AMERICA 8018

2161873 | IMP 8018F | 31/01/2018

COLEMAN CHARLO 0256

S A V PRESIDENT 6847

S A V BLACKCAP MAY 4136

X

S A F 598 BANDO 5175

S A V MADAME PRIDE 0075

S A V MADAME PRIDE 8264

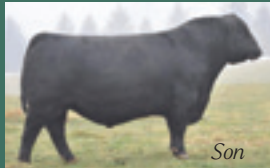
BW: 4.8 || WW: 80 || YW: 134 || MILK: 16

LOT 18 || FOUR PACKAGES OF FIVE UNITS

A bull that needs no introduction!
Breaking the record for the highest selling
Angus bull at \$1.51 million and the last
embryo calf from the maternal matriarch
S A V Madame Pride 0075, America took
to cattle industry by storm. He stamps his
calves extra attractive, the females are
broody, and ensures high performance.
Semen stored on farm in Ontario.
Consigned by 719 Cattle.
Ben: 519-374-3335



America Daughter



Son



Daughter



Daughter

Rainfall cattle are some of the most consistent cattle you will see across not only the Angus breed, but the livestock world as a whole. An excellent heifer option with his low birth, as well as added thickness. The D & N Bred Heifer Sale featured 160 commercial Rainfall heifers, which averaged over \$4500. To see that large of a sample size should be all the proof needed that Rainfall is the real deal.

Semen stored on farm in Ontario and at Alta Genetics. Consigned by 719 Cattle.
Ben: 519-374-3335

S A V RAINFALL 6846

2013656 | IMP 6846D | 09/01/2016

O C C PAXTON 730P

COLEMAN CHARLO 0256

BOHI ABIGALE 6014

S A V 8180 TRAVELER 004

S A V BLACKCAP MAY 4136

S A V MAY 2397

BW: 0.4 || WW: 56 || YW: 108 || MILK: 26

LOT 19 || ONE PACKAGE OF FIVE UNITS



PUREBRED X LADY

Shining Star

S A V PIONEER 7301
S A V PUREBRED 4896 X SINCLAIR VISION X 8S7
 S A V BLACKCAP MAY 8051 SINCLAIR LADY 3SX16 7RL30
 SINCLAIR LADY 7RL30 1C8

PE BW: 0.8 || WW: 51 || YW: 81 || MILK: 24

LOT 20 || ONE PACKAGE OF THREE EMBRYOS

7RL30 traces back to Ideal Lady 4465 of 6807 4236, who was the shining star of the original Sinclair herd. 7RL30 not only produced excellent live calves, but was used heavily in the Brazil export ET program. She is a big volumed female that is very correct in her structure. A mating to the extremely balanced phenotype and numbered Purebred is an incredibly different and intriguing opportunity.

Embryos are stored at Alta Genetics.

Consigned by 719 Cattle.

Ben: 519-374-3335



Sire of Embryos



© Buschbeck

Daughter of Enchantress 3253D

The pedigree of Enchantress 3253D is chalk full of foundation females from the Sinclair herd. Not only does she herself have excellent phenotype, she transmits and outdoes herself in her progeny, as evidenced by her daughter in the feature photo above. She also features a BW in the top 9% of the breed and MCE in the top 1%.

Embryos are stored at Alta Genetics.
Consigned by 719 Cattle.

Ben: 519-374-3335



Dam of Embryos

PUREBRED X ENCHANTRESS

Foundation Female

S A V PIONEER 7301 GOLD-BAR BDL ANARCHY 131A
S A V PUREBRED 4896 X **CASA BRANCA ENCHANTRESS 3253D**
 S A V BLACKCAP MAY 8051 SINCLAIR ENCHANTRESS 9X21

PE BW: 0.5 || WW: 52 || YW: 82 || MILK: 26

LOT 21 || ONE PACKAGE OF THREE EMBRYOS



PUREBRED X SINCLAIR

A Bar 5 Favourite

S A V PIONEER 7301
S A V PUREBRED 4896 X SINCLAIR EMULATION 5522 XP
 S A V BLACKCAP MAY 8051 SINCLAIR K BTY 3FE38 7XT55
 SINCLAIR K BTY 7XT55 B345

PE BW: 1.7 || WW: 63 || YW: 101 || MILK: 21

LOT 22 || ONE PACKAGE OF THREE EMBRYOS

Hailing from the K Beauty cow family, which has long been a favourite of the Bar 5 folks, 7XT55 has been a successful producer all her life. Deep modied and moderate framed, here is an excellent option to add a twist of something different to your herd.

Embryos are stored at Alta Genetics.
 Consigned by 719 Cattle.

Ben: 519-374-3335



7XT55 Daughter

TERMS

The terms of the sale are cash or cheque, payable at par at sale time. The right of property shall not pass until after settlement has been made; unless previous arrangements have been made. Every animal sells to the highest bidder and in cases of disputes, the auctioneer's decision will be final. Announcements from the auction block will take precedence over the printed matter in the catalogue. Current exchange rates will be announced sale day. All monies are in Canadian funds.

PEDIGREE ESTIMATES

Pedigree Estimates (PE) are created on the projected mating of the animal's sire and dam based on averages of the two, creating estimated values that do not hold the same accuracy of actual EPDs issued from the association and should be used as such.

LIABILITIES

It is understood that T Bar C Cattle Co. (2013) Ltd. is acting only as a medium between buyer and seller and is not responsible for any failure on the part of either party to live up to his obligations. Neither does T Bar C Cattle Co. (2013) Ltd. assume any financial obligations to collect or enforce collection of any monies between parties and any legal action that may in exceptional cases be taken must be between the buyer and the seller. T Bar C Cattle Co. (2013) Ltd. assumes no responsibility for any credit extended by the seller to the buyer. The buyer must look to the seller for fulfillment of all guarantees and representations made hereunder.

PHONE, MAIL, WIRE BIDS

Bidders unable to participate in the sale may phone, wire or mail their bids and instructions to the sale manager, auctioneer or special representatives. Bids must be received in sufficient time prior to the sale.

ERRORS

All announcements at sale time, written or oral, supersede any written material in the catalogue.





APRIL 29-30, 2024 | DLMS FARMGATE

SPRING

ONLINE ANGUS GENETICS SALE

fling

