



# BLAIR-ATHOL HAROLDSONS

*& Friends*

SUNDAY  
**OCT. 20<sup>TH</sup> 2024**

BLAIR-ATHOL FARMS | ARCOLA, SK | 1:00 PM

**WITH GUESTS**

ROSELAWN POLLED HEREFORDS  
CHARLTON FARMS | MANNS POLLED HEREFORDS



# BLAIR-ATHOL HAROLDSONS

## Friends

### SALE DAY PHONES

|                 |              |
|-----------------|--------------|
| Chris Poley     | 306-220-5006 |
| Shane Michelson | 403-363-9973 |
| Ben Wright      | 519-374-3335 |
| Levi Rimke      | 204-851-4515 |

### SALE STAFF

|                                    |              |
|------------------------------------|--------------|
| <b>AUCTIONEER</b> Chris Poley      | 306-220-5006 |
| <b>RINGSIDE</b> T Bar C Cattle Co. |              |
| Shane Michelson                    | 403-363-9973 |
| Ben Wright                         | 519-374-3335 |
| Levi Rimke                         | 204-851-4515 |

### ONLINE BIDDING:

|               |              |
|---------------|--------------|
| Mark Shologan | 780-699-5082 |
|---------------|--------------|

**DLM S**  
www.dlms.ca

### TRUCKING:

|            |              |
|------------|--------------|
| H.S. Knill | 877-422-3106 |
|------------|--------------|

### INSURANCE:

|                              |              |
|------------------------------|--------------|
| <b>Alameda Agencies Ltd.</b> |              |
| Bonnie Thompson              | 306-489-2258 |

### HOTEL ACCOMMODATIONS

|  |              |
|--|--------------|
| <b>Ramada, Carlyle</b> (Sale Headquarters) | 866-654-7128 |
|  | 306-453-2686 |
| Kenosee Inn, Kenosee, SK                   | 306-577-2099 |
| Bear Claw Casino and Hotel                 | 306-577-4588 |
| Western Star Inns & Suites, Carlyle, SK    | 306-453-2700 |
| Chaparral Inn, Arcola, SK                  | 306-455-2275 |
| Poplar Tree Inn, Stoughton, SK             | 306-457-3540 |
| Western Star Inn & Suites, Stoughton, SK   | 306-457-3000 |

\*Please call directly to the accommodation of your choice.

### BLAIR ATHOL FARMS

**The Lees Family**  
Box 386, Arcola, SK S0C 0G0  
blairatholfarms@sasktel.net  
www.blairatholfarms.com  
**Duncan & Val**  
Ph: 306-455-2619 C: 306-577-9703  
**Jeff and Grace Lees**  
**Christin and Randy**  
Kylee, Jackson, Hannah & Josie  
C: 306-577-1375



### HAROLDSON'S POLLED HEREFORDS

**Lenna, Kristy, Chad Wilson**  
Box 372, Wawota, SK  
S0G 5A0  
C: 306-577-1256  
chad\_wilson79@hotmail.com  
www.haroldsons.com



### ROSELAWN POLLED HEREFORDS

**Wally & Jackie Mitchell & Family**  
Box 782, Killarney, MB R0K 1G0  
C: 204-534-8204  
jmitchell@goinet.ca  
wmitchell13@hotmail.com  
www.roselawnfarms.com



### MANN'S POLLED HEREFORDS

**Steven, Kennedy & Rory Manns**  
**Roy & Sandra Manns**  
Box 478, Austin, MB  
R0H 0C0  
C: 204-526-0426  
Roy: 204-466-2722  
mannsstevend@gmail.com



### CHARLTON FARMS LTD.

**Jeremy & Arden Charlton**  
**Matthew, Jade, Andrew**  
Box 393, Weyburn, SK S4H 2K3  
Cell: 306-861-7585 Matthew  
Cell: 306-861-3863 Arden  
ja.charlton@sasktel.net



### SASKATCHEWAN SWEEP "STEAKS"

ANL/GLENLEES POLLED HEREFORDS PRODUCTION SALE OCT 19 | STEELMAN, SK  
LONE PINE/AIRRIESS ACRES INVITATIONAL OCT 19 | ALAMEDA, SK  
BLAIR ATHOL HAROLDSON'S & FRIENDS FEMALE SALE OCT 20 | ARCOLA, SK

FROM THE DESK AT

# T BAR C...

Welcome to “Super Sunday” at the “Red Barn,” Arcola, Saskatchewan. This is the 27th annual event and is hosted by Blair Athol and Haroldson’s along with friends from Roselawn, Manns and Charlton Farms on October 20, 2024. This event has continually been a feature in the Polled Hereford breed supplying top cut, productive and competitive seed stock. It is not coincidence that these breeders also host a high selling bull sale each spring.

Built by generations of families dedicated to producing a superior product, the success of this sale is due to the strength of cow families... cow families with predictability.

Jeff and Duncan along with the Blair Athol clan present the strongest offering to date. This family have been true ambassadors of the Junior movement and have assisted many youngsters who had the desire to grow up with livestock. The heifer calves they offer are highly competitive while their breds are high in performance and carry early services. Consider the names... Misty, Saucy, Trish, Farrah, Sparkle... predictable cow families... breed leaders now and moving forward.

Congratulations to Wally and Jackie of Roselawn on their induction onto the CHA Honour Roll... and with that honour they offer their best yet. Headlining their consignment is “Jewell” an outstanding bred out of the super cow Mira 18F. You will appreciate the performance and quality of the Roselawn heifers. Steven and Roy Manns offer a solid group of bred heifers carrying the early A.I. services of Remitall W Fire Storm ET 138L ... consider the opportunities which lie ahead, ranch raised and highly fertile, they offer features that will be solid in value.

Congratulations to Matthew, Jade and Andrew on their success in the show ring this past summer. As they are growing a family and a cow herd, they must sacrifice several from their front pasture to be a part of this event.

The breeding establishment that has achieved 12 consecutive Agribitions as Premier Breeder is at the back of the book. The powerful Haroldson’s consignment offers a world of opportunities. Chad uses embryo transfer as he builds this predictable herd and supplies the industry with bulls...purebred and commercial, Checkout the families who make this offering great... Marvel... Jane... Lady ...Georgia! The first crop of calves by High Country will be a feature and Chad offers the first services of his new herd bull...Memphis.

Plan to be with us on “Super Sunday” as this event is the anchor of the Saskatchewan Sweep Steaks. A weekend full of fellowship, hospitality and outstanding Polled Hereford seedstock; do not hesitate to visit any of the breeders prior to the weekend or give them a call.

Feel free to call me or any of the T Bar Team if you require assistance in selections or purchases of opportunities to move your program ahead.

**CHRIS POLEY**



**CHRIS**  
306-220-5006



**BEN**  
519-374-3335



**SHANE**  
403-363-9973



**LEVI**  
204-851-4515







1

BLAIR-ATHOL 1G **SPARKLE** 35M

FEMALE || C03115934 || DVL 35M || FEBRUARY 13 2024

INNISFAIL WHR X651/723 4013 ET  
**PCL 4013 GLITZ 1G**  
PCL 49Y DAHLILA 111E

C&T 7B DOUBLE D 11D  
**C&T 11D CATALINA 5F**  
REMITALL-W CATALINA 67D

EFBEEF TFL U208 TESTED X651 ET  
INNISFAIL P230 T723  
PCL YUKON R117 ET 49Y  
HAROLDSON'S DAHLILA T100 97X  
REMITALL-W START ME UP ET 7B  
ANL P606 NORTHERN LADY 38X  
TH 223 71I VICTOR 755T  
REMITALL-WEST CATALINA 136B

| CE   | BW  | WW   | YW    | MM   | TM   | BW      |
|------|-----|------|-------|------|------|---------|
| -5.4 | 5.8 | 67.7 | 109.6 | 26.6 | 60.5 | 96 lbs. |

This Glitz Daughter is as good as anything we've ever offered. 'Sparkle' gives you that 'WOW' factor anyway you look at her. She's long and deep with a big hip and yet stays extremely sound and classy. This one is a true show heifer candidate, she's got a great personality and will be friendly enough for any age of showman.

We think enough of this heifer we would be willing to purchase ½ back and manage her if the new buyer wishes.

**Show rights reserved for Edmonton Farm Fair and Agribition 2024.**



Glitz **SIRE**



4013 **GRANDSIRE**





## 2 BLAIR-ATHOL HBM 126H **PEACH** 48M

FEMALE || C03116262 || DVL 48M || FEBRUARY 18 2024

NJW 78P 88X COWBOSS 199B ET  
**NJW 79Z 199B BOURBON 126H ET**  
 BW 91H 100W RITA 79Z ET

BBSF 719T ZACH 60Z  
**BLAIR-ATHOL GMPH CHERRY 114E**  
 RU BA BAILEY'S TIME 232B

NJW 98S R117 RIBEYE 88X ET  
 NJW BW LADYSPORT DEW 78P ET  
 NJW 73S M326 TRUST 100W ET  
 REMITALL RITA 91H  
 TH 122 71I VICTOR 719T  
 BBSF 52U FAWN 22X  
 RST TIME'S A WASTIN' 0124  
 RU BA HOT ROSIE 227X

We purchased a package of Bourbon Semen from Harvie Ranching last spring and are sure glad we did. Bourbon hit a home run with 48M and her twin sister that we are retaining. This one is really attractive with plenty of muscle and balance. She will definitely see the city lights at some point. Dam and Granddam were both high sellers in previous years.

**Owned with HBM Polled Herefords**

| CE   | BW  | WW   | YW    | MM   | TM   | BW      |
|------|-----|------|-------|------|------|---------|
| -3.9 | 6.5 | 65.4 | 111.7 | 25.5 | 58.2 | 80 lbs. |



Bourbon **SIRE**

**“HOME RUN”**  
*city lights*  
 ARE HER DESTINY





Real attractive Bourbon out of the Debbie cow family. 83C is out of one of our most consistent cow families, and is a full sister to the Debbie Doo female that was a donor for Matt Lohner and Kris Gordon. This one could be real exciting in leather next summer.



A big powerful Benchmark here. She's thick and easy doing and has a good look to hit the show ring. 17E seems to crank them out every year. Sisters have sold to Lian Mor and Erinbrook, brothers to Jason Wells and Charles Davis.  
**Owned with Randy Hall**

**3** BLAIR-ATHOL 126H **DEBUTANTE** 41M

FEMALE || C03116083 || DVL 41M || FEBRUARY 16 2024

NJW 78P 88X COWBOSS 199B ET  
**NJW 79Z 199B BOURBON 126H ET**  
BW 91H 100W RITA 79Z ET

RST TIME'S A WASTIN' 0124  
**BLAIR-ATHOL SWEET DEB ET 83C**  
BLAIR-ATHOL NASDAQ DEB ET 35W

NJW 98S R117 RIBEYE 88X ET  
NJW BW LADYSPORT DEW 78P ET  
NJW 73S M326 TRUST 100W ET  
REMITALL RITA 91H  
CRR ABOUT TIME 743  
RST MS 1000 BLAZER 2029  
PW MOHICAN NASDAQ P316  
RU 8G LAST 41L

| CE  | BW  | WW   | YW   | MM   | TM   | BW      |
|-----|-----|------|------|------|------|---------|
| 2.1 | 2.7 | 56.9 | 95.7 | 23.3 | 51.8 | 88 lbs. |

**4** BLAIR-ATHOL GMPH 505H **ELLIE** 7M

FEMALE || C03114772 || DVL 7M || JANUARY 31 2024

TH 506B 358C BENCHMARK 531E ET  
**TH 529B 531E BENCHMARK 505H ET**  
TH 60W 11X MS DOM 529B ET

ANL C HAR T100 TAHOE 86 ET 23B  
**BAR-RZ 23B ELLIE 17E**  
BAR-RZ 192S WENDY 83W

TH 403A 475Z PIONEER 358C ET  
TH 512X 145Y DOMINETE 506B ET  
TH 22R 16S LAMBEAU 17Y  
TH 77S 45P RUBY 60W  
SHF TAHOE R117 T100  
ANL 7N MAPLE 86R  
GLENLEES 36N SYNTEC 192S  
BAR-RZ 32J REBECCA 36R

| CE  | BW  | WW   | YW   | MM | TM   | BW      |
|-----|-----|------|------|----|------|---------|
| 4.6 | 2.9 | 56.1 | 87.3 | 24 | 52.1 | 82 lbs. |





5

BLAIR-ATHOL 223F **ROBIN** 22M

FEMALE || C03115557 || DVL 22M || FEBRUARY 10 2024

TH 71U 719T MR HEREFORD 11X  
**RU BA 11X EXCALIBUR 223F**  
 RU BA 27A MO-MOOLA 233C

NJW 73S 38W RIMROCK 27C ET  
**BLAIR-ATHOL 27C STARLET 8F**  
 BCD 323 POLLED WREN 242Z

TH 122 71I VICTOR 719T  
 TH 7N 45P RITA 71U  
 WLB WINCHESTER POWERBALL 27A  
 RU BA HOT ROSIE 227X

NJW 76S P20 BEEF 38W ET  
 NJW P606 72N DAYDREAM 73S  
 REMITALL SHATNER 323S  
 BCD 345S WREN 988W

Really exciting Excalibur out of a gorgeous Rimrock daughter. This one has the cosmetics and build to make people pay attention. Her sister last year was the popular selection of River Valley Polled Herefords in Ontario. Brothers to 22M are at GM Place Ranch and Bill Potts.

| CE | BW  | WW   | YW   | MM   | TM   | BW      |
|----|-----|------|------|------|------|---------|
| 3  | 4.1 | 57.6 | 85.7 | 29.3 | 58.1 | 90 lbs. |

Excalibur **SIRE**

PAY  
**“ATTENTION”**  
*she's got*  
**COSMETICS & BUILD**  
 ALL IN ONE





6

BLAIR-ATHOL TT 49K **FARRAH** 58M

FEMALE || C03116259 || DVL 58M || FEBRUARY 21 2024

INNISFAIL WHR X651/723 4013 ET  
**PCL 4013 KINGSMAN ET 49K**  
PCL 49Y DAHLILA 111E

BLAIR-ATHOL 10Y HOMERUN 24C  
**BLAIR-ATHOL 24C BLOND FX 80H**  
BLAIR-ATHOL 53U LISA 33A

EFBEEF TFL U208 TESTED X651 ET  
INNISFAIL P230 T723  
PCL YUKON R117 ET 49Y  
HAROLDSON'S DAHLILA T100 97X  
NJW 73S W18 HOMETOWN 10Y ET  
HAROLDSON'S WLC68M KATRINA 33P  
BLAIR-ATHOL CLASSIC 53U  
BLAIR-ATHOL ANN MARGRET 51P

First progeny of the high dollar PLC Kingsman bull to sell. This one has been a favorite of all of our visitors. She's soft and deep and extremely feminine. Can't wait to see this one in production. If you study pedigrees like Dad does, you'll find this one traces back to the great Klondike 315 cow. 315 came to Blair Athol at 11 years of age and weaned 17 calves in her career. 14 of them got registered. Longevity built into this one.

**Show Rights Reserved for Agribition 2024.**  
**Owned with Ken and Judy Wray**

| CE  | BW  | WW   | YW   | MM | TM   | BW      |
|-----|-----|------|------|----|------|---------|
| 3.3 | 3.5 | 60.9 | 98.5 | 24 | 54.5 | 80 lbs. |



Kingsman **SIRE**

“LONGETIVITY”

built in

SOFT || DEEP || FEMININE



Another Kingsman daughter. This one has the same classy look and comes out of a real hard working Montgomery daughter.



Sale day will see 30M make a lot of friends. She's got as much muscle shape as anything in our offering, a real cool looking one here. Her Dam 19F has a perfect Udder, adding Rimrock to the equation ensures added value.



## 7 BLAIR-ATHOL 49K **JEWEL** 40M

FEMALE || C03116082 || DVL 40M || FEBRUARY 16 2024

INNISFAIL WHR X651/723 4013 ET  
**PCL 4013 KINGSMAN ET 49K**  
PCL 49Y DAHLILA 111E

H MONTGOMERY 7437 ET  
**ELM-LODGE JOOP 31J**  
ELM-LODGE BELL OF THE BALL 14B

EFBEEF TFL U208 TESTED X651 ET  
INNISFAIL P230 T723  
PCL YUKON R117 ET 49Y  
HAROLDSON'S DAHLILA T100 97X  
UPS SENSATION 2296 ET  
RST GAT NST Y79D LADY 54B ET  
MSU TCF REVOLUTION 4R  
PED 100L R VALLEY LARISSA 106R

| CE   | BW  | WW   | YW    | MM   | TM   | BW      |
|------|-----|------|-------|------|------|---------|
| -0.9 | 3.8 | 63.7 | 102.3 | 28.7 | 60.6 | 86 lbs. |

## 8 BLAIR-ATHOL 27C **SHASTA** 30M

FEMALE || C03115935 || DVL 30M || FEBRUARY 13 2024

NJW 76S P20 BEEF 38W ET  
**NJW 73S 38W RIMROCK 27C ET**  
NJW P606 72N DAYDREAM 73S

CRR 109 CATAPULT 322  
**ELM-LODGE FELICITY 19F**  
LIAN 155K JUNE ET 118T

SHF PROGRESS P20  
NJW 55N STARDUST 76S  
PW VICTOR BOOMER P606  
NJW 94J DEW 72N  
CRR 719 CATAPULT 109  
CRR 713 KELLY 0117  
GHC PREMIER 155K  
HAROLDSON'S COLBI 2Z 59J

| CE  | BW  | WW   | YW   | MM   | TM   | BW      |
|-----|-----|------|------|------|------|---------|
| 2.5 | 2.1 | 47.6 | 74.8 | 31.1 | 54.9 | 85 lbs. |





9

BLAIR-ATHOL AD 27C

**SAUCY**

14L

FEMALE || C03105171 || DVL 14L || FEBRUARY 18 2023

NJW 76S P20 BEEF 38W ET  
**NJW 73S 38W RIMROCK 27C ET**  
NJW P606 72N DAYDREAM 73S

MCCOY 53A PATENT 124E  
**BLAIR-ATHOL 124E SASSY 145J**  
BLAIR-ATHOL 53 CC 95Y

SHF PROGRESS P20  
NJW 55N STARDUST 76S  
PW VICTOR BOOMER P606  
NJW 94J DEW 72N  
MCCOY 70Y SKYFALL 53A  
MCCOY 719T SUSIE ET 417B  
BLAIR-ATHOL CLASSIC 53U  
BLAIR-ATHOL 89S KAYLA 114U

| CE   | BW  | WW   | YW   | MM   | TM   | BW      |
|------|-----|------|------|------|------|---------|
| -4.4 | 6.9 | 61.3 | 99.2 | 32.4 | 63.1 | 94 lbs. |

Bred to CSC 701 Oshoto 316 on May 14, 2024. Due to calve Feb. 22, 2025. Show Rights Reserved for Edmonton Farm Fair and Agribition 2024.  
Owned with Anita Doktor

I actually can't believe I'm writing a footnote for Saucy, because from the minute she was born, I never imagined she would leave here. Saucy is the first daughter of the popular Sassy cow we showed for the past 3 years. Saucy has walked in the show ring with my 10 year old Daughter Hannah on the halter more than 40 times in the past 2 years. She had great success beside momma, but held her own without her too, most notably at Edmonton Farm Fair 2023 where she was Intermediate Heifer Calf Champion. I think Saucy's best days are ahead of her though. I'm more excited to see her in production then any one we've ever bred. Study the udder quality on her mom, combined with Rimrock and I just can't imagine it being less then perfect. Exciting service to the popular CSC Oshoto bull is a huge bonus.

Saucy sells in her entirety, but we will retain the right to one flush at the buyers convenience and our expense. We love this heifer so much and are so excited about her, we would also be willing to purchase half of Saucy back and keep her here to manage for the new owners. This is a great investment opportunity.



Saucy **FARMFAIR**



Sassy **CWA**



Oshoto **SERVICE SIRE**



Justice **SERVICE SIRE**

Big Strong Rimrock. Lots of size, and with her femininity and Broodiness you won't want to miss her.

**Bred June 8 to Remital-W MHPH Justice 2H - due to calve March 19, 2025.**



10

Rimrock **SIRE OF LOTS 8-11**

This Rimrock comes out of a real hard working young Lux daughter. This cow family has been consistent, milk and udder quality will be evident.

**Bred June 9th to NJW 103Y 174X Diablo 156C ET - Due to calve March 20, 2025.**



11

## 10 BLAIR-ATHOL 27C **CINDER** 102L

FEMALE || C03107499 || DVL 102L || MARCH 18 2023

NJW 76S P20 BEEF 38W ET  
**NJW 73S 38W RIMROCK 27C ET**  
NJW P606 72N DAYDREAM 73S

TDP CROSSOVER Z400  
**BBSF Z400 CINDY ET 94B**  
BBSF 303T CINDY 88Y

SHF PROGRESS P20  
NJW 55N STARDUST 76S  
PW VICTOR BOOMER P606  
NJW 94J DEW 72N  
TH 133U 719T UPGRADE 69X  
ASH LIL PEANUT 203P  
GROSVENOR TITANIUM 80P 303T  
BBSF 040035 CINDY 21W

| CE   | BW  | WW   | YW    | MM   | TM   | BW       |
|------|-----|------|-------|------|------|----------|
| -6.7 | 5.8 | 57.3 | 105.1 | 30.7 | 59.4 | 104 lbs. |

## 11 BLAIR-ATHOL 27C **LEXY** 9L

FEMALE || C03105161 || DVL 9L || FEBRUARY 15 2023

NJW 76S P20 BEEF 38W ET  
**NJW 73S 38W RIMROCK 27C ET**  
NJW P606 72N DAYDREAM 73S

MOHICAN LUX 68D  
**BLAIR-ATHOL LADY LUX 101J**  
BLAIR-ATHOL CLASSY ROSIE 70Y

SHF PROGRESS P20  
NJW 55N STARDUST 76S  
PW VICTOR BOOMER P606  
NJW 94J DEW 72N  
NJW PMH 66X 156T LUX 206A ET  
MOHICAN VICKY Z5  
BLAIR-ATHOL CLASSIC 53U  
RU 67N ROSIE 25R

| CE  | BW  | WW   | YW   | MM   | TM   | BW      |
|-----|-----|------|------|------|------|---------|
| 5.7 | 1.5 | 46.6 | 70.7 | 32.6 | 55.9 | 66 lbs. |





**12** BLAIR-ATHOL 124E **TRISH** 72L

FEMALE || C03105831 || DVL 72L || MARCH 10 2023

MCCOY 70Y SKYFALL 53A  
**MCCOY 53A PATENT 124E**  
MCCOY 719T SUSIE ET 417B

CHURCHILL KICKSTART 501C ET  
**MCCOY 501C TRISHA ET 80F**  
MCCOY 719T TRISHA 16Z

JDH 117R EQUITY 70Y ET  
MCCOY 25M ALISON 64W  
TH 122 71I VICTOR 719T  
MCCOY 58G SUSIE 33K  
CHURCHILL RED BULL 200Z  
HVH OKSANA 4L 33N  
TH 122 71I VICTOR 719T  
MCCOY R117 TRISHA 14X

| CE  | BW  | WW   | YW   | MM   | TM   | BW      |
|-----|-----|------|------|------|------|---------|
| 0.5 | 3.9 | 62.5 | 97.7 | 32.1 | 63.4 | 82 lbs. |

Trish 72L is a definite Sale Feature! She's Big and Bold and typical of our Patent daughters. She follows in the footsteps of Paternal sisters Applause and Sassy. We showed her last fall at Ag-Ex and Agribition. She was a Reserve Heifer Calf Champion for Jackson in the Ag-Ex Junior show and was 2nd in Class at Agribition. She's the real McCoy!

**Bred April 14th to NJW 103Y 174X Diablo 156C ET - Due to Calve January 23, 2025.**



Patent **SIRE OF LOTS 12-17**

**“THE REAL MCCOY”**  
*definite highlight*  
**BIG || BOLD || BEAUTIFUL**





13

BLAIR-ATHOL 124E **MISTY** 117L

FEMALE || C03107648 || DVL 117L || MARCH 23 2023

MCCOY 70Y SKYFALL 53A  
**MCCOY 53A PATENT 124E**  
 MCCOY 719T SUSIE ET 417B

JDH 117R EQUITY 70Y ET  
 MCCOY 25M ALISON 64W  
 TH 122 71I VICTOR 719T  
 MCCOY 58G SUSIE 33K

BLAIR-ATHOL 7B MAKE MY DAY 30D  
**BLAIR-ATHOL 30D MAIZIE 96H**  
 BLAIR-ATHOL 97B MAXINE 96D

REMITALL-W START ME UP ET 7B  
 GHC MISS DEW ET 13Y  
 NJW 73S 22Z MIGHTY MAX 97B ET  
 XTC 45P DOLLY 10U

| CE | BW  | WW   | YW   | MM   | TM   | BW      |
|----|-----|------|------|------|------|---------|
| -1 | 5.4 | 64.7 | 94.2 | 34.4 | 66.8 | 78 lbs. |

If this one doesn't get your blood pumping, you should book an appointment. I love the look of this girl. So refined and smooth through that front third and head and yet still soft enough middled and stout enough from behind. These Patent daughters have been very popular in past years, but this will be the last group of them to sell, as we lost Patent to a shoulder injury after a fight last spring. Her mating to Rimrock will ring the bell. If you study the catalog you'll see that the Rimrock/Patent mating is one that I really think works.

**Bred May 13th to NJW 73S 38W Rimrock 27C ET - Due to Calve February 21, 2025.**

Rimrock **SERVICE SIRE**

“ THE LAST OFFERING OF  
**PATENT DAUGHTERS**  
 to walk the  
**BLAIR ATHOL/HAROLDSON'S**  
 Sale Ring ”





Big Framed Performance type female out of a tremendous young cow. 30L was orphaned last July when we lost her mother to a lightning strike. These Patent daughters all work and the cow family behind this one is impeccable.

**Bred April 29th to NJW 73E D287 Daybreak 95L ET and exposed to him from May 21 to August 24, 2024 - Due to Calve Feb. 7, 2025.**  
**Owned with Ken and Judy Wray.**



Patent Daughter that traces back to the 107W donor. This cow family never misses.

**Bred June 28 to Blair Athol 124E Hogan 175L - Due to calve April 8, 2025.**

14

BLAIR-ATHOL TT 124

ZSA ZSA 30L

FEMALE || C03105405 || DVL 30L || FEBRUARY 23 2023

MCCOY 70Y SKYFALL 53A  
**MCCOY 53A PATENT 124E**  
MCCOY 719T SUSIE ET 417B

JDH 117R EQUITY 70Y ET  
MCCOY 25M ALISON 64W  
TH 122 71I VICTOR 719T  
MCCOY 58G SUSIE 33K  
TH 122 71I VICTOR 719T  
BBSF 52U FAWN 22X  
BLAIR-ATHOL BOND DIRECT 103P  
BLAIR-ATHOL 122L DEE 13R

BBSF 719T ZACH 60Z  
**BLAIR-ATHOL 60 ZELDA 100D**  
BLAIR-ATHOL 103 DIANE 33U

| CE   | BW  | WW   | YW    | MM   | TM   | BW       |
|------|-----|------|-------|------|------|----------|
| -4.7 | 6.7 | 65.4 | 106.6 | 34.2 | 66.9 | 104 lbs. |

15

BLAIR-ATHOL 124E

RUBY 149L

FEMALE || C03108175 || DVL 149L || APRIL 04 2023

MCCOY 70Y SKYFALL 53A  
**MCCOY 53A PATENT 124E**  
MCCOY 719T SUSIE ET 417B

JDH 117R EQUITY 70Y ET  
MCCOY 25M ALISON 64W  
TH 122 71I VICTOR 719T  
MCCOY 58G SUSIE 33K  
CRR ABOUT TIME 743  
RST MS 1000 BLAZER 2029  
SHF RIB EYE M326 R117  
BLAIR-ATHOL WESTERN GAL 78T

RST TIME'S A WASTIN' 0124  
**BLAIR-ATHOL RIB NITE 39C**  
BLAIR-ATHOL RIBEYE GAL 107W

| CE   | BW  | WW   | YW    | MM   | TM | BW      |
|------|-----|------|-------|------|----|---------|
| -3.4 | 5.3 | 63.4 | 106.5 | 30.3 | 62 | 92 lbs. |



Another Patent/Rimrock mating. This one comes out of the "Yes" cow family Jackson bought in the Guilford Dispersal. "Yes 5C" has weaned 8 heifer calves in a row for him, and he's been smart enough to retain 6 of them. This one is more moderate than most in that family but is sure built the way we like them, smooth and refined with plenty of substance.

**Bred June 18th to NJW 103Y 174X Diablo 156C ET - Due to calve March 29, 2025.**



61L is a big powerful red eyed Patent out of the cow family that traces back to my old Bond cow from WTK. Pedigree also has Major and Keynote up fairly close. This one could throw some herd bulls.

**Bred May 12th to NJW 73E D287 Daybreak 95L ET - Due to calve February 20, 2025.**

**Owned with Percyview Land and Cattle**



## 16 BLAIR-ATHOL DJ 124E **DIANA** 55L

FEMALE || C03105510 || DVLJ 55L || MARCH 04 2023

MCCOY 70Y SKYFALL 53A  
**MCCOY 53A PATENT 124E**  
MCCOY 719T SUSIE ET 417B

NJW 73S 38W RIMROCK 27C ET  
**BLAIR-ATHOL 27C DIANE 8G**  
GHR YES 1Y 5C

JDH 117R EQUITY 70Y ET  
MCCOY 25M ALISON 64W  
TH 122 71I VICTOR 719T  
MCCOY 58G SUSIE 33K  
NJW 76S P20 BEEF 38W ET  
NJW P606 72N DAYDREAM 73S  
GHR YES 49S 1Y  
GHR VOLUME IV 178U

| CE   | BW   | WW   | YW   | MM | TM   | BW      |
|------|------|------|------|----|------|---------|
| 11.2 | -0.2 | 47.8 | 74.5 | 35 | 58.9 | 58 lbs. |

## 17 BLAIR-ATHOL 124E PLC **CHARM** 61L

FEMALE || C03105947 || DVL 61L || MARCH 06 2023

MCCOY 70Y SKYFALL 53A  
**MCCOY 53A PATENT 124E**  
MCCOY 719T SUSIE ET 417B

NJW 73S W18 HOMETOWN 10Y ET  
**BLAIR-ATHOL 10Y CHARISMA 76D**  
BLAIR-ATHOL 101 GRACE 91W

JDH 117R EQUITY 70Y ET  
MCCOY 25M ALISON 64W  
TH 122 71I VICTOR 719T  
MCCOY 58G SUSIE 33K  
SHF WONDER M326 W18 ET  
NJW P606 72N DAYDREAM 73S  
BLAIR-ATHOL 13K MAJOR 101N  
BLAIR-ATHOL 20X MARTINA 65K

| CE    | BW  | WW   | YW    | MM | TM   | BW       |
|-------|-----|------|-------|----|------|----------|
| -10.4 | 9.4 | 73.2 | 119.8 | 38 | 74.6 | 112 lbs. |





Broody and Dark Red, this one looks like a cow. Granddaughter of 16S, one of the best ever at Blair Athol. Excaliber Daughters have perfect udders and make great cows!

**Bred May 28 to NJW 73S 38W Rimrock 27C ET - Due to calve March 8, 2025.**

**Owned with Steven and Shawn Griffin**



Dark red, deep sided and with lots of middle. She looks like a brood cow.

**Exposed to NJW 73E D287 Daybreak 95L ET May 21 - August 24, 2024. Ultrasound indicates a heifer calf pregnancy due around March 1, 2025.**

**Owned with Ken and Judy Wray**

18

RU BA 223F

ROSE PETAL

245L

FEMALE || C03108487 || EKD 245L || MARCH 01 2023

TH 71U 719T MR HEREFORD 11X  
RU BA 11X EXCALIBER 223F  
RU BA 27A MO-MOOLA 233C

TH 122 71I VICTOR 719T  
TH 7N 45P RITA 71U  
WLB WINCHESTER POWERBALL 27A  
RU BA HOT ROSIE 227X  
NJW 76S 4037 DURANGO SPIRIT 174X  
NJW 101U 100W SPIRITQUEEN103Y  
BLAIR-ATHOL 13K MAJOR 101N  
C&T 2E HOPEFUL 7N

NJW 103Y 174X DIABLO 156C ET  
RU BA 156C RED ROSE 298F  
BLAIR-ATHOL 101 ROSIE 16S

| CE  | BW  | WW   | YW   | MM   | TM | BW      |
|-----|-----|------|------|------|----|---------|
| 3.8 | 3.8 | 53.1 | 76.9 | 25.4 | 52 | 85 lbs. |

19

BLAIR-ATHOL TT 223F

LADY

66L

FEMALE || C03105949 || DVL 66L || MARCH 09 2023

TH 71U 719T MR HEREFORD 11X  
RU BA 11X EXCALIBER 223F  
RU BA 27A MO-MOOLA 233C

TH 122 71I VICTOR 719T  
TH 7N 45P RITA 71U  
WLB WINCHESTER POWERBALL 27A  
RU BA HOT ROSIE 227X  
TH 745A 7B START ME UP 71D  
JHF LINDA 51A  
TH 71U 17Y MOUNTAINEER 420A  
ANL R 17A LADY 1238 131C

ANL 71D START ME UP 51A 83F  
ANL R 83F LADY 99E 221H  
ANL R 420A LADY 131C 99E

| CE   | BW  | WW   | YW   | MM   | TM   | BW      |
|------|-----|------|------|------|------|---------|
| -3.3 | 4.9 | 57.4 | 86.4 | 24.2 | 52.9 | 88 lbs. |





20

BLAIR-ATHOL 223F **BONNIE** 67L

FEMALE || C03105950 || DVL 67L || MARCH 09 2023

TH 71U 719T MR HEREFORD 11X  
**RU BA 11X EXCALIBER 223F**  
 RU BA 27A MO-MOOLA 233C

WHITEHAWK WARRIOR 845C ET  
**BLAIR-ATHOL 845 BONNIE ET 102H**  
 BLAIR-ATHOL RIBEYE GAL 107W

TH 122 71I VICTOR 719T  
 TH 7N 45P RITA 71U  
 WLB WINCHESTER POWERBALL 27A  
 RU BA HOT ROSIE 227X  
 UPH PROSPECTOR P152  
 GRANDVIEW CMR 4003 BETH Y115ET  
 SHF RIB EYE M326 R117  
 BLAIR-ATHOL WESTERN GAL 78T

| CE   | BW  | WW   | YW    | MM   | TM   | BW      |
|------|-----|------|-------|------|------|---------|
| -0.4 | 4.5 | 67.6 | 100.6 | 30.8 | 64.6 | 78 lbs. |

The Excaliber daughters always increase in value once they are in production. I love the young mother of this one, she traces back once again to the 107W Donor. Tom Warnyca bought the maternal sister last year and really likes her.

**Bred April 14th to NJW 73S 38W Rimrock 27C ET - Due to calve January 23, 2025.**



Excaliber **SIRE OF LOTS 18-20**





Ace **SIRE OF LOTS 21-26**

Powerful in type and kind. Deep ribbed, sweet fronted and looks like she will be in the donor pen in the near future. Her dam 81E has a near perfect udder and brings in one of the biggest calves every fall. Maternal sisters include 132G who is at ANL and Miley 78K who was our high seller last year to Mission Ridge.

**Exposed to NJW 73E D287 Daybreak 95L ET from May 21 to August 24, 2024 - Preg check indicates an Early April calf.**

Gotta love this Ace Daughter. She is a TANK! Massive capacity, and so easy keeping she will be able to handle the worst of weather! Maternal sisters work at Golden Oak and Dunsmore Family Farms.

**Exposed to NJW 73E D287 Daybreak 95L ET from May 21 - August 24, 2024. Preg check indicates a calving date of March 1, 2025.**



**21** BLAIR-ATHOL 43C **MADONNA** 158L

FEMALE || C03108492 || DVL 158L || APRIL 13 2023

TH 512X 719T PLAYMAKER 14Z  
**REMITALL-W BNC ACE 43C**  
REMITALL-WEST MARVEL ET 5Z

TH 122 71I VICTOR 719T  
TH 122 71I DOMINETTE 512X ET  
SHF WONDER M326 W18 ET  
REMITALL MARVEL 78T  
NJW 67U 28M BIG MAX 22Z  
NJW P606 72N DAYDREAM 73S  
TH 6M 755T PINNACLE 31Y  
MCCOY 264P ZENA 49W

NJW 73S 22Z MIGHTY MAX 69B ET  
**SQUARE-D MADONNA 81E**  
MCCOY 31Y ZENA 81A

| CE  | BW  | WW   | YW    | MM   | TM   | BW      |
|-----|-----|------|-------|------|------|---------|
| 2.4 | 3.3 | 73.2 | 112.9 | 30.1 | 66.7 | 74 lbs. |

**22** BLAIR-ATHOL 43C **SARAH** 73L

FEMALE || C03107212 || DVL 73L || MARCH 10 2023

TH 512X 719T PLAYMAKER 14Z  
**REMITALL-W BNC ACE 43C**  
REMITALL-WEST MARVEL ET 5Z

TH 122 71I VICTOR 719T  
TH 122 71I DOMINETTE 512X ET  
SHF WONDER M326 W18 ET  
REMITALL MARVEL 78T  
SHF WONDER M326 W18 ET  
NJW P606 72N DAYDREAM 73S  
GOLDEN-OAK OUTCROSS 18U  
BAR-H SARA 39U

NJW 73S W18 HOMEGROWN 8Y ET  
**GOLDEN-OAK 8Y SARAH 4D**  
GOLDEN-OAK 18U SARAH 39U 1B

| CE  | BW  | WW   | YW    | MM   | TM   | BW      |
|-----|-----|------|-------|------|------|---------|
| 0.3 | 4.7 | 67.3 | 111.2 | 28.2 | 61.9 | 86 lbs. |



Kiki 168L is Freckle Faced, big bodied and stylish. Just a late April birthday but her size allows her to fit in with the rest. Granddam 26U Purchased from the McEachren dispersal where she was considered to be one of their best uddered cows.

**Exposed to Blair Athol 27C Hustler 100K from May 22 - August 7, 2024. Projected Calving date late February/Early March.**



These Ace Daughters make big, strong, good uddered cows. 162L is out of a good cow family that originated at Meadow Acres.

**Exposed to NJW 73E D287 Daybreak 95L ET from May 21 to August 24, 2024. Projected Calving date is Mid March.**



23

BLAIR-ATHOL 43C **KI-KI** 168L

FEMALE || C03109102 || DVL 168L || APRIL 26 2023

TH 512X 719T PLAYMAKER 14Z  
**REMITALL-W BNC ACE 43C**  
REMITALL-WEST MARVEL ET 5Z

NJW 73S W18 HOMETOWN 10Y ET  
**BLAIR-ATHOL 10Y KAITLYN 83F**  
EJM ULAN 21R 26U

TH 122 71I VICTOR 719T  
TH 122 71I DOMINETTE 512X ET  
SHF WONDER M326 W18 ET  
REMITALL MARVEL 78T  
SHF WONDER M326 W18 ET  
NJW P606 72N DAYDREAM 73S  
EJM RODERICK 201N 21R  
EJM MISS LUCKY SEVEN 89H 7K

| CE   | BW  | WW   | YW  | MM   | TM | BW      |
|------|-----|------|-----|------|----|---------|
| -6.8 | 7.3 | 71.8 | 118 | 25.1 | 61 | 94 lbs. |

24

BLAIR-ATHOL 43C **SUGAR** 162L

FEMALE || C03108495 || DVL 162L || APRIL 16 2023

TH 512X 719T PLAYMAKER 14Z  
**REMITALL-W BNC ACE 43C**  
REMITALL-WEST MARVEL ET 5Z

REMITALL-W 50 SHADES ET 12C  
**BLAIR-ATHOL 50 DREAMS 72H**  
BLAIR-ATHOL HOME BABY 31B

TH 122 71I VICTOR 719T  
TH 122 71I DOMINETTE 512X ET  
SHF WONDER M326 W18 ET  
REMITALL MARVEL 78T  
BOYD BANKER 0015 ET  
REMITALL MARVEL 78T  
NJW 73S W18 HOMETOWN 10Y ET  
BLAIR-ATHOL 101 ADA 16W

| CE   | BW | WW   | YW    | MM   | TM   | BW |
|------|----|------|-------|------|------|----|
| -4.5 | 5  | 69.3 | 113.6 | 27.1 | 61.8 | -  |





Ace Daughters have extra performance, extra length and lots of milk. 82L will contribute all of that. 6 generations of Blair Athol cows in this one. Her dam 8E has possibly our best bull calf in 2024.

**Bred May 7, 2024 to NJW 73S 38W Rimrock 27C ET - Due to calve February 15, 2025.**



Long and Feminine. 111L is out of a hard working, good uddered cow we purchased from Harvey Duke. We are excited to see her first calf.

**Bred May 20, 2024 to Churchill W4 Sherman 2157K ET. Due to calve February 27, 2025.**

**25** BLAIR-ATHOL 43C **CHANTELLE** 82L

FEMALE || C03107489 || DVL 82L || MARCH 13 2023

TH 512X 719T PLAYMAKER 14Z  
**REMITALL-W BNC ACE 43C**  
REMITALL-WEST MARVEL ET 5Z

BBSF 719T ZACH 60Z  
**BLAIR-ATHOL 60Z SHANNON 8E**  
BLAIR-ATHOL 204P HATTIE 34C

TH 122 71I VICTOR 719T  
TH 122 71I DOMINETTE 512X ET  
SHF WONDER M326 W18 ET  
REMITALL MARVEL 78T  
TH 122 71I VICTOR 719T  
BBSF 52U FAWN 22X  
REMITALL LAGRD POUNDER ET 204P  
BLAIR-ATHOL 6L DEANNA 30S

| CE    | BW  | WW   | YW    | MM   | TM   | BW       |
|-------|-----|------|-------|------|------|----------|
| -10.1 | 8.1 | 68.4 | 108.2 | 23.2 | 57.4 | 108 lbs. |

**26** BLAIR-ATHOL 43C **QUEENIE** 111L

FEMALE || C03107645 || DVL 111L || MARCH 22 2023

TH 512X 719T PLAYMAKER 14Z  
**REMITALL-W BNC ACE 43C**  
REMITALL-WEST MARVEL ET 5Z

NJW 144Y 174X DIABLO 180A  
**WCC 512C SPIRIT QUEEN 8512F**  
WCC 12Z TEMPTRESS 512C

TH 122 71I VICTOR 719T  
TH 122 71I DOMINETTE 512X ET  
SHF WONDER M326 W18 ET  
REMITALL MARVEL 78T  
NJW 76S 4037 DURANGO SPIRIT 174X  
NJW 69S 38W BEEFY ANGIE 144Y  
HAROLDSON'S LINER 521X 12Z  
HAROLDSONS TEMPTRESS 4T 12Y

| CE   | BW  | WW   | YW    | MM   | TM   | BW      |
|------|-----|------|-------|------|------|---------|
| -1.7 | 3.7 | 66.6 | 103.2 | 28.9 | 62.2 | 86 lbs. |



Tahoe X Rimrock takes most of the guess work out of what this one will turn out like. Stout made solid heifer here, one that should be outstanding.

**Bred June 25, 2024 to Blair Athol 124E Hogan 175L - Due to calve April 5, 2025.**



The pedigree tells the story. Glitz, Rimrock, and the Marvel cow family. Very feminine and guaranteed to work.

**Bred May 4, 2024 to NJW 73E D287 Daybreak 95L ET and exposed to him May 21 - August 24, 2024. Projected Calving date is early March.**



## 27 BLAIR-ATHOL CD **MISS MAPLE** 11L

FEMALE || C03105164 || DVLC 11L || FEBRUARY 16 2023

SHF TAHOE R117 T100  
**ANLC HAR T100 TAHOE 86 ET 23B**  
ANL 7N MAPLE 86R

NJW 73S 38W RIMROCK 27C ET  
**SQUARE-D BELLE 11G**  
BLAIR-ATHOL 946 FRANKIE 111E

SHF RIB EYE M326 R117  
SHF LADY 512 L73  
ANL 2K SPECIALIST 7N  
ANL 32K MAPLE 47N  
NJW 76S P20 BEEF 38W ET  
NJW P606 72N DAYDREAM 73S  
SQUARE-D PLAINSMAN 946Y  
MA 62P FRAN 1U 123Y

| CE   | BW  | WW   | YW    | MM   | TM   | BW      |
|------|-----|------|-------|------|------|---------|
| -5.6 | 7.4 | 68.6 | 109.3 | 27.4 | 61.7 | 96 lbs. |

## 28 BLAIR-ATHOL 1G **MARVEL** 12L

FEMALE || C03105165 || DVL 12L || FEBRUARY 17 2023

INNISFAIL WHR X651/723 4013 ET  
**PCL 4013 GLITZ 1G**  
PCL 49Y DAHLILA 111E

NJW 73S 38W RIMROCK 27C ET  
**BLAIR-ATHOL EB 27C MARVEL 23G**  
BLAIR-ATHOL 7B MARVEL 20D

EFBEEF TFL U208 TESTED X651 ET  
INNISFAIL P230 T723  
PCL YUKON R117 ET 49Y  
HAROLDSON'S DAHLILA T100 97X  
NJW 76S P20 BEEF 38W ET  
NJW P606 72N DAYDREAM 73S  
REMITALL-W START ME UP ET 7B  
BYEVISTA 138W LASS 38Y

| CE  | BW  | WW   | YW   | MM   | TM   | BW      |
|-----|-----|------|------|------|------|---------|
| 2.9 | 3.1 | 60.2 | 99.3 | 24.5 | 54.6 | 75 lbs. |





We don't sell many Max daughters because we like them so much, so we keep them for ourselves. 50L is correct and feminine. What sets her apart is her dam comes out of the Firefly family that has worked so well at Harvie Ranching. Her dam 297F was the high selling bred female in the Wascana dispersal when she was purchased by Randy Hall.

**Exposed to NJW 73E D287 Daybreak 95L ET May 21 - August 24, 2024. Projected Calving Date is early April.**

**Owned with Randy Hall.**



Powerful, Red Eyed and Freckle Faced. We love the massive body and femininity this 50 Shades daughter gives us. Super cows backing her make this one so good!

**Bred June 6, 2024 to NJW 103Y 174X Diablo 156C ET - Due to calve March 17, 2025.**

29

BLAIR-ATHOL GMPH

FIREFLY

50L

FEMALE || C03105506 || DVL 50L || MARCH 02 2023

NJW 67U 28M BIG MAX 22Z  
NJW 73S 22Z MIGHTY MAX 97B ET  
NJW P606 72N DAYDREAM 73S

GOLDEN-OAK 4J MAXIUM 28M  
NJW 4037 80L FAITH 67U  
PW VICTOR BOOMER P606  
NJW 94J DEW 72N  
R LEADER 6964  
KJ BJ 167X VELVET 719Z  
BNMHPP 13P HEAT 101S  
HARVIE MISS CONNIE 1Y 19L

KJ BJ 719Z TRUMAN 695D ET  
HARVIE WCC MS FIREFLY 297F  
HARVIE MS FIREFLY 24U

| CE  | BW  | WW   | YW   | MM   | TM   | BW      |
|-----|-----|------|------|------|------|---------|
| 1.5 | 3.2 | 59.8 | 90.1 | 27.3 | 57.2 | 84 lbs. |

30

BLAIR-ATHOL 50

PEARLS

83L

FEMALE || C03107490 || DVL 83L || MARCH 13 2023

BOYD BANKER 0015 ET  
REMITALL-W 50 SHADES ET 12C  
REMITALL MARVEL 78T

MSU TCF REVOLUTION 4R  
SSF P606 MS VICTOR 803  
REMITALL PATRIOT ET 13P  
REMITALL MAVREL 105N  
NJW 76S 4037 DURANGO SPIRIT 174X  
NJW 101U 100W SPIRITQUEEN103Y  
LAGRAND RELOAD 80P ET  
EASTON QUEEN 3H

NJW 103Y 174X DIABLO 156C ET  
BLAIR-ATHOL 156C JEWEL 163H  
BLAIR-ATHOL 80P JULIA 11W

| CE | BW  | WW   | YW  | MM   | TM   | BW      |
|----|-----|------|-----|------|------|---------|
| -8 | 5.6 | 53.5 | 101 | 22.5 | 49.3 | 88 lbs. |





31

BLAIR-ATHOL 569G **CANDY** 87L

FEMALE || C03107493 || DVL 87L || MARCH 14 2023

NJW 79Z Z311 ENDURE 173D ET  
**CMF 1720 GOLD RUSH 569G ET**  
 L III TFL C609 VICTORIA 1720

GH RUGER 3786 DELUXE 17D  
**MLL 17D DEBBIE ET 326G**

BLAIR-ATHOL TW DEBBIE DOO 22C

KCF BENNETT ENCORE Z311 ET  
 BW 91H 100W RITA 79Z ET  
 EFBEEF RESOLUTE CEO  
 L III X651 RITA A045

UPS SENSATION 3786 ET  
 GH MISS KILO DELIGHT 61B  
 RST TIME'S A WASTIN' 0124

BLAIR-ATHOL NASDAQ DEB ET 35W

| CE  | BW  | WW   | YW    | MM   | TM   | BW      |
|-----|-----|------|-------|------|------|---------|
| 6.9 | 1.7 | 64.3 | 103.5 | 25.3 | 57.5 | 82 lbs. |

Exciting Pedigree here, this one is a bit different for us. We used 10 Straws of CMF Gold Rush last year and that looks to have been a good decision. I like a lot about this heifer and think most everyone will like her on sale day. She's been a visitor favorite all summer. Added bonus is that she comes out of the Debbie Doo 22C cow family that did so well for Kris Gordon and Matt Lohner.

**Bred April 22, 2024 to PCL 4013 Kingsman ET 49K - Due to Calve January 31, 2025.**

Gold Rush **SIRE**

**“EXCITING”**  
*pedigree*  
 GOLD RUSH x DEBBIE DOO DAUGHTER





32

BLAIR-ATHOL 115J **SASHA** 133L

FEMALE || C03107937 || DVL 133L || MARCH 29 2023

NJW 76S SPIRIT 190G ET

**BLAIR-ATHOL 190G BRUTUS 115J**

MHPH 118U CATRIONA 1071Z

BOYD MASTERPIECE 0220

**BLAIR-ATHOL 0220 SECRET 162B**

NBG 4R VICTORIA 22W 2A

LJR 023R WHITMORE 10W

NJW 55N STARDUST 76S

MHPH 101S UMPIRE 118U

WILD-OAK 40U XTINA 18X

SHF RIB EYE M326 R117

SSF P606 MS VICTOR 803

MSU TCF REVOLUTION 4R

MEADOW-ACRES RL ADA ET 22W

| CE  | BW  | WW   | YW   | MM   | TM   | BW      |
|-----|-----|------|------|------|------|---------|
| 0.9 | 2.6 | 52.9 | 85.2 | 29.2 | 55.7 | 80 lbs. |

Red eyed and flashy. This one gets noticed. Lots of good cows in this pedigree too including NJW's great 76S cow.

**Bred June 2, 2024 to Blair Athol 124E Hogan 175L - Due to Calve March 13, 2025.**



33

BLAIR-ATHOL 156C **CHEYENNE** 119L

FEMALE || C03107867 || DVL 119L || MARCH 26 2023

NJW 76S 4037 DURANGO SPIRIT 174X

**NJW 103Y 174X DIABLO 156C ET**

NJW 101U 100W SPIRITQUEEN103Y

RU BA 11X EXCALIBER 223F

**BLAIR-ATHOL 223F SHAYLYNNE 50H**

BLAIR-ATHOL RIBEYE GAL 107W

THM DURANGO 4037

NJW 55N STARDUST 76S

NJW 73S M326 TRUST 100W ET

NJW 4037 55N FREE SPIRIT 101U

TH 71U 719T MR HEREFORD 11X

RU BA 27A MO-MOOLA 233C

SHF RIB EYE M326 R117

BLAIR-ATHOL WESTERN GAL 78T

| CE  | BW  | WW   | YW | MM   | TM   | BW      |
|-----|-----|------|----|------|------|---------|
| 3.8 | 4.1 | 66.2 | 99 | 26.2 | 59.3 | 84 lbs. |

Real long made Diablo daughter here. This one comes out of the 107W cow family too. Will be well liked in production.

**Bred May 7, 2024 to NJW 73E D287 Daybreak 95L ET - Due to calve February 15, 2025**



34

BLAIR-ATHOL 156C **LUCY** 57L

FEMALE || C03105512 || DVL 57L || MARCH 05 2023

NJW 76S 4037 DURANGO SPIRIT 174X

**NJW 103Y 174X DIABLO 156C ET**

NJW 101U 100W SPIRITQUEEN103Y

HAROLDSON'S UNITED 33D 36G

**BLAIR-ATHOL 36G LU-LU 40J**

BLAIR-ATHOL 60Z JOSIE 152E

THM DURANGO 4037

NJW 55N STARDUST 76S

NJW 73S M326 TRUST 100W ET

NJW 4037 55N FREE SPIRIT 101U

HAROLDSON'S UPGRADE T100 33D

HAROLDSON'S WLC MIRA ET 52B

BBSF 719T ZACH 60Z

BLAIR-ATHOL 101 GRACE 91W

| CE   | BW  | WW   | YW   | MM   | TM   | BW      |
|------|-----|------|------|------|------|---------|
| -1.2 | 5.5 | 59.9 | 95.5 | 24.9 | 54.9 | 78 lbs. |

A Diablo out of an absolutely perfect uddered United daughter. Her mother was shown fairly successfully by Jackson in 2022 and looks even better as a momma. This one isn't real big, but is made really well. May be the sleeper of the offering.

**Bred May 21, 2024 to NJW 73E D287 Daybreak 95L ET and exposed to him from May 21 to August 24, 2024. Projected calving date is Early April.**



# RS NJW 73E D287 **DAYBREAK** 95L ET

MALE || C03115942 || 73E 95L || FEBRUARY 11 2023

SHF YORK 19H Y02  
**SHF DAYBREAK Y02 D287 ET**  
SHF MISS M326 T08 ET

FHF 9279 DEADWOOD 38Y  
**NJW 221B 38Y HARMONY 73E ET**  
NJW 67U 8Y FAITH 221B

MSU MF HUDSON 19H  
LOEWEN MISS P20 10W  
KCF BENNETT 3008 M326  
SHF POSTIVE MISS 73C M15  
ECR L18 EXTRA DEEP 9279  
FHF 51M RUBY 82S  
NJW 73S W18 HOMEGROWN 8Y ET  
NJW 4037 80L FAITH 67U

| CE  | BW  | WW   | YW   | MM   | TM   | BW     |
|-----|-----|------|------|------|------|--------|
| 7.7 | 1.9 | 57.3 | 90.7 | 30.9 | 59.6 | 88 lbs |

Really excited about the latest addition to our herd bull battery. This is the 5th bull we've purchased from NJW. I told Ned "off the truck, this was the best one yet."

That says a lot considering the impact Max 97B, Diablo 156C and Rimrock 27C have made at Blair Athol and across the nation. Daybreak is so complete. He's sound footed, deep and thick with a herd bull's head. He bred 30 cows and heifers and came in looking as good as when we turned him out. Be amongst the first to have some progeny. 10 services sell.



# RS NJW 73S 38W **RIMROCK** 27C

MALE || C03026211 || 73S 27C || FEBRUARY 5 2015

SHF PROGRESS P20  
**NJW 76S P20 BEEF 38W ET**  
NJW 55N STARDUST 76S

PW VICTOR BOOMER P606  
**NJW P606 72N DAYDREAM 73S**  
NJW 94J DEW 72N

FELTONS LEGEND 242  
SHF INTRSTATE D03 G06 ET  
NJW BW TRAILDUST 161L  
NJW 57G SPIRIT QUEEN 55N ET  
REMITALL BOOMER 46B  
PW VICTORIA 964 8114  
RU 20X BOULDER 57G  
NJW D32 CLAIRE 94J

| CE  | BW  | WW   | YW   | MM   | TM   | BW |
|-----|-----|------|------|------|------|----|
| 9.5 | 0.7 | 45.3 | 69.5 | 35.4 | 58.1 | -  |

4 Services and 4 Daughters sell



# RS NJW 103Y 174X **DIABLO** 156C ET

MALE || C03026212 || 103Y 156C || FEBRUARY 27 2015

THM DURANGO 4037  
**NJW 76S 4037 DURANGO SPIRIT 174X**  
NJW 55N STARDUST 76S

NJW 73S M326 TRUST 100W ET  
**NJW 101U 100W SPIRITQUEEN103Y**  
NJW 4037 55N FREE SPIRIT 101U

CS BOOMER 29F  
THM 7085 VICTRA 9036  
NJW BW TRAILDUST 161L  
NJW 57G SPIRIT QUEEN 55N ET  
KCF BENNETT 3008 M326  
NJW P606 72N DAYDREAM 73S  
KJ 2403 RECRUIT 966R  
NJW 57G SPIRIT QUEEN 55N ET

| CE   | BW  | WW   | YW   | MM   | TM   | BW |
|------|-----|------|------|------|------|----|
| 11.5 | 0.7 | 47.8 | 71.5 | 22.2 | 46.1 | -  |

4 Services and 2 Daughters sell



# RS BLAIR-ATHOL 124E **HOGAN** 175L

MALE || C03109107 || DVL 175L || MAY 1 2023

MCCOY 70Y SKYFALL 53A  
**MCCOY 53A PATENT 124E**  
MCCOY 719T SUSIE ET 417B

HAROLDSON'S TOTEM 200Z 5D  
**BLAIR-ATHOL 5D PIN-UP 73H**  
HAROLDSON'S BA CHERRY 48Y 21F

JDH 117R EQUITY 70Y ET  
MCCOY 25M ALISON 64W  
TH 122 71I VICTOR 719T  
MCCOY 58G SUSIE 33K  
CHURCHILL RED BULL 200Z  
BLAIR'S NELLIE R117 ET 5B  
HAROLDSONS WLC RHINO ET 48Y  
ARTHUR 26Y 22X CHERRY 9C

| CE   | BW  | WW   | YW    | MM   | TM   | BW      |
|------|-----|------|-------|------|------|---------|
| -4.1 | 6.7 | 69.8 | 108.5 | 34.7 | 69.6 | 96 lbs. |

3 Services sell







**35** JAC **COUNTRY** 25L

FEMALE || C03105929 || MJAC 25L || MARCH 16 2023

GHC VISA 75D  
**GHC LRL REWARDS 94F**  
WALKER DRF JH LASS W193 17U338

ANL C HAR T100 TAHOE 86 ET 23B  
HAROLDSONS JVJ SARAH 521X 14Z  
SHF WYATT P20 W193  
LJR HAZEL 17U

BLAIR-ATHOL 10Y HOMERUN 24C  
**JAC 24C COUNTRY 10J**  
JAC COUNTRY 8B

NJW 73S W18 HOMETOWN 10Y ET  
HAROLDSON'S WLC68M KATRINA 33P  
SQUARE-D PLAINSMAN 946Y  
BLAIR-ATHOL SHEEZ COUNTRY 21Y

| CE  | BW  | WW   | YW    | MM   | TM   | BW      |
|-----|-----|------|-------|------|------|---------|
| 3.4 | 4.1 | 63.2 | 104.8 | 22.9 | 54.5 | 85 lbs. |

This is one that's hard to sell. With a ton of depth and hip she's smooth shouldered and correct and square down to the ground. This is the type you keep around. Her mother is a deep smooth made cow with a picture-perfect udder. Bred to kaiser, if she has a bull or heifer you'll have to get excited about this one.

**Exposed to PCL 183F Kaiser 1K from May 6 – August 1, 2024. Due to calve end of February to early March.**



Rewards **SIRE**



Kaiser **SERVICE SIRE**



36

JAC 163F **LISA LEE** 29L

FEMALE || C03105925 || JJAC 29L || MARCH 24 2023

KCF BENNETT IMPACT B451  
**GHC DELEGATE 163F**  
 GHC C5 MISS BEAUTY 134C

BLAIR-ATHOL 10Y HOMERUN 24C  
**JAC 1C LISA LEE 4G**  
 JAC LISA LEE 1C

KCF BENNETT REVOLUTION X51  
 KCF MISS M326 T56  
 GHC MONOPOLY 162Z  
 GHC C5 MISS UNIQUE 187Z  
 NJW 73S W18 HOMETOWN 10Y ET  
 HAROLDSON'S WLC68M KATRINA 33P  
 SQUARE-D PLAINSMAN 946Y  
 BLAIR-ATHOL LISA LEE 82U

| CE  | BW | WW   | YW   | MM   | TM   | BW      |
|-----|----|------|------|------|------|---------|
| 2.2 | 3  | 53.1 | 92.6 | 20.2 | 46.8 | 85 lbs. |

This GHC Delegate female is one that has been a favorite to those who have come to see her. With the depth and power this heifer carries like her mother she will raise them big every year and won't miss a beat.

**Exposed to PCL 183F Kaiser 1K from May 6 – August 1, 2024. Due to calve middle of March.**



36

37

JAC **NANCY** 9L

FEMALE || C03105930 || MJAC 9L || FEBRUARY 22 2023

GHC VISA 75D  
**GHC LRL REWARDS 94F**  
 WALKER DRF JH LASS W193 17U338

RU BA 11X EXCALIBUR 223F  
**BLAIR-ATHOL DJ 223F NANCY 18J**  
 GHR YES 1Y 5C

ANL C HAR T100 TAHOE 86 ET 23B  
 HAROLDSONS JVJ SARAH 521X 14Z  
 SHF WYATT P20 W193  
 LJR HAZEL 17U  
 TH 71U 719T MR HEREFORD 11X  
 RU BA 27A MO-MOOLA 233C  
 GHR YES 49S 1Y  
 GHR VOLUME IV 178U

| CE  | BW  | WW   | YW   | MM   | TM   | BW      |
|-----|-----|------|------|------|------|---------|
| 1.4 | 3.7 | 61.8 | 84.3 | 25.5 | 56.4 | 83 lbs. |

This dark, smooth made GHC Rewards heifer will be sure to work in any program. She's got the look, she's got the depth, as well as she's really square and has a perfect teat placement coming. With great cow families behind her she has a ton of potential as she matures.

**Exposed to PCL 183F Kaiser 1K from May 6 – Aug 1, 2024. Due to calve middle to end of February.**



37

38

JAC LL4J **HOPE** 30M

FEMALE || C03113087 || AJAC 30M || MARCH 15 2024

GHC VISA 75D  
**GHC LRL REWARDS 94F**  
 WALKER DRF JH LASS W193 17U338

BLAIR-ATHOL 10Y HOMERUN 24C  
**JAC 24C LISA LEE 4J**  
 JAC LISA LEE 3D

ANL C HAR T100 TAHOE 86 ET 23B  
 HAROLDSONS JVJ SARAH 521X 14Z  
 SHF WYATT P20 W193  
 LJR HAZEL 17U  
 NJW 73S W18 HOMETOWN 10Y ET  
 HAROLDSON'S WLC68M KATRINA 33P  
 SQUARE-D PLAINSMAN 946Y  
 BLAIR-ATHOL LISA LEE 82U

| CE  | BW  | WW   | YW    | MM   | TM   | BW      |
|-----|-----|------|-------|------|------|---------|
| 0.2 | 4.5 | 66.7 | 102.4 | 23.7 | 57.1 | 95 lbs. |

Don't miss this middle of March heifer! she's out of our 4J cow Andrew has been showing. This heifer has a ton of depth and will be able to pull ahead as a cow or be hard to beat in the show ring. This is one that gets better every day. We will be happy to keep her for no charge to get ready for any juniors wanting to show her at Bonanza 2025.



38





39

ROSELAWN RH **PAT** 38K 40M

FEMALE || C03116343 || AHK 40M || MARCH 06 2024

PCL 4013 GLITZ 1G  
**BLAIR-ATHOL 1G BRADY 38K**  
GHR YES 1Y 3C

INNISFAIL WHR X651/723 4013 ET  
PCL 49Y DAHLILA 111E  
GHR YES 49S 1Y  
GHR VOLUME IV 178U  
NJW 67U 28M BIG MAX 22Z  
BW 91H 100W RITA 79Z ET  
BBSF 29W YAMAHA 62Y  
ROSELAWN BELL 107S 4U

| CE   | BW  | WW   | YW    | MM   | TM   | BW      |
|------|-----|------|-------|------|------|---------|
| -3.6 | 5.8 | 66.3 | 110.2 | 33.2 | 66.4 | 94 lbs. |

Coming straight out of the top end of our heifer calf pen, 40M is going to draw lots of notice. Loaded with substance, style, length, fantastic top, depth of rib and thickness. Her pedigree is impressive as well. Her mother 8H, is a Heavy Duty 72C daughter we sold to Randy Hall for \$10,000.00 and her sire 38K has left us a great set of calves for his first crop. A maternal sister sells as Lot 40.

**Co-owned with Randy Hall.**



40

ROSELAWN RH **TIA** 13G 32L

FEMALE || C03105426 || AHK 32L || MARCH 03 2023

REMITALL-W CONNECTED ET 24E  
**C&T AYWON 24E GUNSMOKE 13G**  
C&T Z81 DANETTE 83B

REMITALL-W 50 SHADES ET 12C  
REMITALL-WEST YELLOW ROSE 2Y  
MOHICAN STROKER Z81  
SQUARE-D EMERALD 840R  
NJW 67U 28M BIG MAX 22Z  
BW 91H 100W RITA 79Z ET  
BBSF 29W YAMAHA 62Y  
ROSELAWN BELL 107S 4U

| CE  | BW  | WW   | YW | MM | TM   | BW      |
|-----|-----|------|----|----|------|---------|
| 1.6 | 3.4 | 52.9 | 88 | 31 | 57.5 | 82 lbs. |

Another great daughter out of 8H and sired by Gunsmoke. The Gunsmoke daughters' udders are as near perfect as you can get. This is a heifer I like a lot. Take an extra look at her on sale day.

**AI Bred to TH Big Country on May 1, 2024 and pasture exposed to Blair Athol 1G Brady 38K from May 24 to August 10, 2024. Preg. Checked safe to AI service.**

**Co-owned with Randy Hall.**





41

ROSELAWN **JEWELL** 182H 5L

FEMALE || C03105419 || AHK 5L || FEBRUARY 19 2023

PCR X51 BENTLEY 454B  
**TH CROWN ROYAL 182H**  
 TH 372C 456B GEMINI 51E

SHF TAHOE R117 T100  
**HAROLDSON'S MIRA T100 18F**  
 HAROLDSON'S WLC MIRA ET 52B

KCF BENNETT REVOLUTION X51  
 PCR IDA GOLDIE 40X  
 ILR RED POWER 456B  
 TH 105S 475Z GEMINI 372C ET  
 SHF RIB EYE M326 R117  
 SHF LADY 512 L73  
 NJW 73S W18 HOMETOWN 10Y ET  
 HAROLDSON'S 37H MIRA ET 62K

| CE  | BW  | WW   | YW  | MM | TM   | BW      |
|-----|-----|------|-----|----|------|---------|
| 7.8 | 1.3 | 63.4 | 103 | 23 | 54.7 | 72 lbs. |

WOW is all I can say. Here is one of the deepest ribbed females you're going to find. Smooth shouldered, a pretty, feminine head, fully pigmented and red to the ground. Chris Poley said she has an udder coming that's as good as he's seen and she is the kind of cow that makes herd bulls. One of the best things about this heifer is her mother Mira 18F who is a deep, good footed, great uddered cow that's hard to fault. (Brady bought Mira as a calf from Chad Wilson.) She is the mother of Roselawn Pioneer 28J, one of our herdsires here at Roselawn. We flushed her for the first time this year and got 31 grade A embryo's sired by Oshoto.

**AI bred to Churchill W4 Sherman 2157K ET on May 11, 2024. Preg check by ultrasound, safe to AI date - no cleanup used.**

Crown Royal **SIRE**Roselawn Pioneer 358C 28J **MAT. BROTHER**  
Walking Herdsire at Roselawn Polled Herefords

THE KIND THAT MAKES  
**HERD BULLS**  
 AND AN UDDER COMING THAT'S  
*good as I've seen*  
 - CHRIS POLEY





## 42 PACKAGE OF 3 EMBRYOS

CSC 701 OSHOTO 316 x HAROLDSON'S MIRA T100 18F

CSC 508 50B BRAWN 704  
**CSC 701 OSHOTO 316**  
CSC 502 LADY DEW 701

SHF TAHOE R117 T100  
**HAROLDSON'S MIRA T100 18F**  
HAROLDSON'S WLC MIRA ET 52B

NJW 25W 38W BEEF 50B  
CSC 21 8Y GAIL 508  
CHURCHILL SENSATION 028X  
CSC 10Y LADY DEW 502 ET  
SHF RIB EYE M326 R117  
SHF LADY 512 L73  
NJW 73S W18 HOMETOWN 10Y ET  
HAROLDSON'S 37H MIRA ET 62K

| PE | CE  | BW  | WW   | YW    | MM   | TM   |
|----|-----|-----|------|-------|------|------|
|    | 2.5 | 3.1 | 58.3 | 101.2 | 33.4 | 62.5 |

Here is Haraldon's Mira T100 18F. She is a Tahoe daughter out of Mira 32B. A 3/4 sister to the great United bull, mother of one of our herdsire bulls Roselawn Pioneer 28J and our feature heifer 5L. She has also been tested on all known defects and came back 100% clean on everything. We flushed her for the first time this year to CSC 701 Oshoto 316 and got 31 Grade "A" embryos. Here's an opportunity for you to get in on the first set of calves off this new and exciting bull. We put 20 embryos into recipis and are excited to see the calves coming early spring.

**We are offering 3 grade A embryos guaranteed for one pregnancy when placed by a certified technician**



Here's a real eye-catching, red-eyed, feminine Gunsmoke daughter with a lot of style and depth. With Gunsmoke, FT Know and Walk Hard in her pedigree, her udder will be flawless.

**Pasture exposed to Blair Athol 1G Brady 38K from May 22 to August 10, 2024. Observed bred May 22, 2024. Peg checked safe to May 22 date.**

## 43 ROSELAWN **TINA** 13G 6L

FEMALE || C03105422 || AHK 6L || FEBRUARY 19 2023

REMITALL-W CONNECTED ET 24E  
**C&T AYWON 24E GUNSMOKE 13G**  
C&T Z81 DANETTE 83B

BOYD FT KNOX 17Y XZ5 4040  
**ROSELAWN BESS 4040 11G**  
ROSELAWN PIPER 154U 34A

REMITALL-W 50 SHADES ET 12C  
REMITALL-WEST YELLOW ROSE 2Y  
MOHICAN STROKER Z81  
SQUARE-D EMERALD 840R  
TH 22R 16S LAMBEAU 17Y  
DOSS MY EYES ADORE U DHZ5  
HARVIE OVHF WALK HARD 154U  
ROSELAWN SCARLET 4G 13P

| CE  | BW  | WW   | YW | MM   | TM   | BW      |
|-----|-----|------|----|------|------|---------|
| 2.6 | 2.8 | 54.2 | 88 | 23.8 | 50.9 | 84 lbs. |



A Gunsmoke heifer that's hard to part with. Short marked, very feminine and guaranteed good milk and great udder.

**Pasture Exposed to Blair Athol 1G Brady 38K from May 9 to August 10, 2024. Preg. Checked safe.**



44

If you're looking for a performance heifer, 9L is the one for you. Her mother 25B, one of our donor cows, is the mother and grandmother to some of our top cows.

**Exposed to Roselawn Gunsmoke 13G 7K from May 9 to August 10, 2024. Observed bred May 19. Preg. Checked safe.**



45

## 44 ROSELAWN **TINA** 13G 33L

FEMALE || C03105424 || AHK 33L || MARCH 04 2023

REMITALL-W CONNECTED ET 24E  
**C&T AYWON 24E GUNSMOKE 13G**  
C&T Z81 DANETTE 83B

NJW 137X 10Y LOADED 61D ET  
**ROSELAWN VACA 61D 65G**  
ROSELAWN MOLLEY ET 50A

REMITALL-W 50 SHADES ET 12C  
REMITALL-WEST YELLOW ROSE 2Y  
MOHICAN STROKER Z81  
SQUARE-D EMERALD 840R  
NJW 73S W18 HOMETOWN 10Y ET  
NJW 67U 3027 VACA 137X  
TH 71U 719T MR HEREFORD 11X  
C&T 12R TAYLOR ET 55U

| CE  | BW  | WW   | YW   | MM   | TM   | BW      |
|-----|-----|------|------|------|------|---------|
| 6.1 | 1.9 | 52.5 | 83.9 | 29.1 | 55.4 | 84 lbs. |

## 45 ROSELAWN **JEWELL** 182H 9L

FEMALE || C03105411 || AHK 9L || FEBRUARY 23 2023

PCR X51 BENTLEY 454B  
**TH CROWN ROYAL 182H**  
TH 372C 456B GEMINI 51E

HARVIE OVHF WALK HARD 154U  
**ROSELAWN PIPER 154U 25B**  
ROSELAWN PAYTON 10W 42Y

KCF BENNETT REVOLUTION X51  
PCR IDA GOLDIE 40X  
ILR RED POWER 456B  
TH 105S 475Z GEMINI 372C ET  
HARVIE RAFTSMAN 16R  
BBSF 100L UNIQUE ET 131R  
HAROLDSON'S TANK 45P 10W  
ROSELAWN RHENA 121R 58U

| CE  | BW  | WW   | YW   | MM   | TM   | BW      |
|-----|-----|------|------|------|------|---------|
| 5.2 | 2.5 | 65.4 | 99.2 | 20.6 | 53.3 | 88 lbs. |





46

ROSELAWN **JEWELL** 182H 16L

FEMALE || C03105427 || AHK 16L || FEBRUARY 26 2023

PCR X51 BENTLEY 454B  
**TH CROWN ROYAL 182H**  
TH 372C 456B GEMINI 51E

KCF BENNETT REVOLUTION X51  
PCR IDA GOLDIE 40X  
ILR RED POWER 456B  
TH 105S 475Z GEMINI 372C ET  
NJW 73S W18 HOMETOWN 10Y ET  
NJW 67U 3027 VACA 137X  
HARVIE OVHF WALK HARD 154U  
ROSELAWN KARLIA 82P 23T

NJW 137X 10Y LOADED 61D ET  
**ROSELAWN VACA 61D 78H**  
ROSELAWN PIPER 154U 73Z

| CE  | BW  | WW   | YW | MM   | TM   | BW      |
|-----|-----|------|----|------|------|---------|
| 9.6 | 0.6 | 54.2 | 86 | 17.7 | 44.8 | 71 lbs. |

This Crown Royal heifer is a real neat package – goggle eyed and red to the ground with a real nice udder coming. Her two-year old mother did a great job on her.

**Exposed to Roselawn Gunsmoke 13G 7K from May 9 to August 10, 2024. Preg. Checked safe.**



47

ROSELAWN **DORA** 14G 64L

FEMALE || C03105416 || AHK 64L || MARCH 14 2023

NJW 79Z 22Z HEAVY DUTY 72C ET  
**ROSELAWN COBRA 72C 14G**  
ROSELAWN FANCY 21B 54D

NJW 67U 28M BIG MAX 22Z  
BW 91H 100W RITA 79Z ET  
HAROLDSON'S RHINO 48Y 21B  
ROSELAWN PIPER 154U 90B  
MHPH 40U INSPECTOR 120X  
HAROLDSON'S EMERALD T100 104W  
HAROLDSON'S TANK 45P 10W  
ROSELAWN PIPER 154U 47Y

HAROLDSON'S INSPECTOR 120X 88A  
**ROSELAWN SHAUNA 88A 47E**  
ROSELAWN PAYTON 10W 96A

| CE   | BW  | WW | YW    | MM   | TM   | BW       |
|------|-----|----|-------|------|------|----------|
| -3.6 | 5.9 | 66 | 102.8 | 28.1 | 61.1 | 104 lbs. |

64L is a heifer with performance and style. She should have a nice tidy udder. Crossed with Gunsmoke 7K should produce an exciting offspring next year.

**Pasture Exposed to Roselawn Gunsmoke 13G 7K from May 9 to August 10, 2024. Observed bred May 25. Preg. Checked safe.**



48

ROSELAWN **DORA** 14G 73L

FEMALE || C03105417 || AHK 73L || MARCH 20 2023

NJW 79Z 22Z HEAVY DUTY 72C ET  
**ROSELAWN COBRA 72C 14G**  
ROSELAWN FANCY 21B 54D

NJW 67U 28M BIG MAX 22Z  
BW 91H 100W RITA 79Z ET  
HAROLDSON'S RHINO 48Y 21B  
ROSELAWN PIPER 154U 90B  
MHPH 40U INSPECTOR 120X  
HAROLDSON'S EMERALD T100 104W  
DTHF RASPUTIN 121R  
ROSELAWN KEESHA 00S 39N

HAROLDSON'S INSPECTOR 120X 88A  
**ROSELAWN SHAUNA 88A 72E**  
ROSELAWN RHENA 121R 77U

| CE  | BW  | WW   | YW   | MM   | TM   | BW      |
|-----|-----|------|------|------|------|---------|
| 0.1 | 3.8 | 55.8 | 88.3 | 27.7 | 55.6 | 89 lbs. |

The Cobra daughters we have in production are impressive and 73L is no exception. Check her out on sale day. Lots of maternal in this pedigree!

**Exposed to Roselawn Gunsmoke 13G 7K from May 9 to August 10, 2024. Observed bred May 19. Preg. Checked safe.**





## ROSELAWN **COBRA** 72C 14G

MALE || C03061377 || AHK 14G || FEBRUARY 27 2019

NJW 67U 28M BIG MAX 22Z  
**NJW 79Z 22Z HEAVY DUTY 72C ET**  
 BW 91H 100W RITA 79Z ET

HAROLDSON'S RHINO 48Y 21B  
**ROSELAWN FANCY 21B 54D**  
 ROSELAWN PIPER 154U 90B

GOLDEN-OAK 4J MAXIUM 28M  
 NJW 4037 80L FAITH 67U  
 NJW 73S M326 TRUST 100W ET  
 REMITALL RITA 91H  
 HAROLDSON'S WLC RHINO ET 48Y  
 REMITALL MARVEL 190S  
 HARVIE OVHF WALK HARD 154U  
 ROSELAWN PAYTON 10W 74Y

| CE   | BW  | WW   | YW   | MM   | TM   | BW      |
|------|-----|------|------|------|------|---------|
| 10.3 | 0.3 | 55.7 | 79.7 | 35.9 | 63.8 | 96 lbs. |

A home raised bull that has left us good uddered, feminine daughters.

**Sire of Lots 47 and 48.**



**RS**



## ROSELAWN **GUNSMOKE** 13G 7K

MALE || C03094725 || AHK 7K || FEBRUARY 13 2022

REMITALL-W CONNECTED ET 24E  
**C&T AYWON 24E GUNSMOKE 13G**  
 C&T Z81 DANETTE 83B

NJW 137X 10Y LOADED 61D ET  
**ROSELAWN VACCA 61D 82G**  
 ROSELAWN JAYCEE GC ET 11E

REMITALL-W 50 SHADES ET 12C  
 REMITALL-WEST YELLOW ROSE 2Y  
 MOHICAN STROKER Z81  
 SQUARE-D EMERALD 840R  
 NJW 73S W18 HOMETOWN 10Y ET  
 NJW 67U 3027 VACA 137X  
 H BK CCC SR GAME CHANGER ET  
 ROSELAWN PIPER 154U 25B

| CE  | BW   | WW   | YW   | MM   | TM   | BW      |
|-----|------|------|------|------|------|---------|
| 7.5 | -0.2 | 47.4 | 67.5 | 34.4 | 58.1 | 91 lbs. |

A home raised calving ease bull that we have used very successfully on heifers. His first set of calves come easy, are well marked and take off as soon as they hit the ground. **Service Sires to Lots 45, 46, 47, and 48.**



**RS**



## C&T AYWON 24E **GUNSMOKE** 13G

MALE || C03064273 || TL 13G || MARCH 5 2019

REMITALL-W 50 SHADES ET 12C  
**REMITALL-W CONNECTED ET 24E**  
 REMITALL-WEST YELLOW ROSE 2Y

MOHICAN STROKER Z81  
**C&T Z81 DANETTE 83B**  
 SQUARE-D EMERALD 840R

BOYD BANKER 0015 ET  
 REMITALL MARVEL 78T  
 SHF RIB EYE M326 R117  
 DORBAY MISS WHITNEY 411W  
 STAR STROKE O'GENIUS 91X ET  
 RVP 45S SWEET ULYA 41U  
 SQUARE-D LANDMARK 130N  
 SQUARE-D DANETTE 940N

| CE  | BW  | WW   | YW   | MM | TM   | BW |
|-----|-----|------|------|----|------|----|
| 2.8 | 2.5 | 49.3 | 83.4 | 28 | 52.7 | -  |

He's a calving ease sire producing great daughters.

**Sire of Lots 43 and 44.**



**RS**



## BLAIR ATHOL 1G **BRADY** 38K

MALE || C03095462 || DVL 38K || FEBRUARY 16 2022

INNISFAIL WHR X651/723 4013 ET  
**PCL 4013 GLITZ 1G**  
 PCL 49Y DAHLILA 111E

GHR YES 49S 1Y  
**GHR YES 1Y 3C**  
 GHR VOLUME IV 178U

EFBEEF TFL U208 TESTED X651 ET  
 INNISFAIL P230 T723  
 PCL YUKON R117 ET 49Y  
 HAROLDSON'S DAHLILA T100 97X  
 MCCOY 55M ABSOLUTE 49S  
 GHR SEBASTIAN 3S 26W  
 GHC VOLUME IV ET 150S  
 GHR NANCY 54L 11N

| CE   | BW  | WW   | YW    | MM   | TM   | BW      |
|------|-----|------|-------|------|------|---------|
| -4.3 | 5.6 | 70.1 | 118.4 | 32.3 | 67.4 | 93 lbs. |

We purchased this bull from our friends, the Lees. We're very excited about this Glitz son's first set of calves. Our feature heifer calf is sired by this bull.

**Service sire to Lot 43 and 44. Sire of Lot 39.**



**RS**





**49** PBHR **LEGACY** 11J 14L

FEMALE || C03111731 || PBHR 14L || FEBRUARY 14 2023

R LEADER 6964  
**BOYD 31Z BLUEPRINT 6153**  
NJW 91H 100W RITA 31Z ET

MCCOY Z426 LEGACY 9F  
**PBHR LEGACY 47G 11J**  
PBHR LEGACY 10W 47G

HYALITE ON TARGET 936  
R MISS REVOLUTION 1009  
NJW 73S M326 TRUST 100W ET  
REMITALL RITA 91H  
MOHICAN THM EXCEDE Z426  
MCCOY Z311 CONNIE 56D  
TIL-TOBA ELVIS 16S 11E  
PBHR LEGACY 81L 10W

| CE  | BW  | WW   | YW   | MM   | TM | BW      |
|-----|-----|------|------|------|----|---------|
| 5.9 | 0.5 | 56.3 | 89.6 | 26.8 | 55 | 70 lbs. |

The Legacy cow family has been known for great udders. This will be one of the first ones to leave the farm.  
**Pasture exposed from June 1, 2024 – August 1, 2024 to Glenlees JJ 030 Trax 10L**



Trax **SERVICE SIRE**



**GENEX**  
Blueprint **SIRE**



50

PBHR **AVERY** 40H 12L

FEMALE || C03111728 || PBHR 12L || FEBRUARY 12 2023

PCL 118U DODGE 3D  
**DTHF JERICHO 44J**  
DTHF ELANOR 96E

NJW 135U 10Y HOMETOWN 27A  
**CALCO 27A AVERY 40H**  
DTHF AVERY 24A

MPPH 101S UMPIRE 118U  
GHC MISS TRUST 54B  
ANL DM 719T VICTOR 76S ET 47Z  
DTHF LEXUS 218X  
NJW 73S W18 HOMETOWN 10Y ET  
NJW 4037 34S DURANGO VACA 135U  
TIL-TOBA SIGN UP 11J 11S  
DTHF LEXI 24X

| CE  | BW  | WW   | YW   | MM   | TM   | BW      |
|-----|-----|------|------|------|------|---------|
| 4.8 | 2.1 | 48.2 | 78.7 | 22.3 | 46.4 | 80 lbs. |

Avery is another deep bodied heifer with lots of length, her dam is a very nice uddered cow.

**AI Bred - April 29, 2024, to Remitall-W Fire Storm ET 138L and pasture exposed from May 28, 2024 - August 1, 2024 to PBHR C rossfire 104G 22K**



50

51

MANNS **LADY** 113F 11L

FEMALE || C03111720 || UBT 11L || FEBRUARY 11 2023

CRR 109 CATAPULT 322  
**MAR 322 HENDRIX ET 2H**  
PCL STARLET 44U ET 76A

ANL 2447 GAME CHANGER 58W 41D  
**MANNS LADY 55U 113F**  
MANNS LADY 23K 55U

CRR 719 CATAPULT 109  
CRR 713 KELLY 0117  
NJW 98S DURANGO 44U  
C&T 122L STARLET 9N  
H BK CCC SR GAME CHANGER ET  
MOHICAN VIOLET 58W  
WLB NEWS 36N ET 453S  
MANNS LASSIE'S NEW EDITION 23K

| CE   | BW  | WW   | YW   | MM   | TM   | BW      |
|------|-----|------|------|------|------|---------|
| -5.3 | 5.2 | 56.4 | 95.6 | 31.4 | 59.6 | 91 lbs. |

Lady is a big ribbed, easy doing heifer. She is setting a nice udder from one of the oldest cow families dad has.

**AI Bred - April 26, 2024, to SHF Horizon D287 H022 and pasture exposed from May 28, 2024 - August 1, 2024 to PBHR Crossfire 104G 22K**



51

52

PBHR **JADE** 128L

FEMALE || C03111707 || PBHR 128L || APRIL 08 2023

TH 13Y 358C BOTTOM LINE 206E  
**BLAIR-ATHOL 206 END ZONE 64G**  
BLAIR-ATHOL 946 HAYLEE 106B

MAR 233X ZAP 69Z  
**PBHR JADE 5A 28C**  
PBHR JADE 6L 5A

TH 403A 475Z PIONEER 358C ET  
TH 54W 719T BETH 13Y  
SQUARE-D PLAINSMAN 946Y  
HAROLDSON'S HAYLEE 68M 66P  
MAR 120U OGRE 233X  
MA 86R TAMI 26L 8X  
REMITALL NEW DAY 86U  
MIL-WRAY JADE 6L

| CE | BW  | WW   | YW   | MM   | TM   | BW      |
|----|-----|------|------|------|------|---------|
| 1  | 4.4 | 54.7 | 91.2 | 21.5 | 48.9 | 89 lbs. |

This young April bred heifer has nice length. She is dark red and out of our Bottomline son from Blair Athol.

**Pasture exposed from May 28, 2024 - August 1, 2024 to PBHR Crossfire 104G 22K.**



52





53

PBHR **JODI** 161J 19L

FEMALE || C03117593 || PBHR 19L || FEBRUARY 15 2023

TH FRONTIER 174E  
**TH BIG COUNTRY 537G ET**  
TH 506X 145Y DOMINETTE 533B ET

TH 403A 475Z PIONEER 358C ET  
FTF TRUSTING LADY 312A  
FTF PROSPECTOR 145Y  
TH 122 71I DOMINETTE 506X ET  
MOHICAN THM EXCEDE Z426  
MCCOY Z311 CONNIE 56D  
WLB HOME RUN 8Y 112C  
DTHF DEBBY 76D

MCCOY Z426 LEGACY 9F  
**DTHF JODI 161J**  
DTHF GERALDINE 61G

| CE   | BW   | WW   | YW   | MM   | TM   | BW      |
|------|------|------|------|------|------|---------|
| 10.1 | -0.4 | 57.3 | 94.2 | 32.8 | 61.5 | 71 lbs. |

Jody came in dam from a very good bred in the Doug Troop herd. 19L is very appealing and has been a favourite all summer with visitors.

**AI Bred - April 29, 2024, to Remitall-W Fire Storm ET 138L and pasture exposed from May 28, 2024 - August 1, 2024 to PBHR Crossfire 104G 22K**



Big Country **SIRE**



Fire Storm **SERVICE SIRE**



Jessica comes from a very good cow from Wally Pugh. The Excalibur daughters are milking very well and will be keepers.

**AI Bred - April 29, 2024, to Remitall-W Fire Storm ET 138L and pasture exposed from May 28, 2024 - August 1, 2024 to PBHR Crossfire 104G 22K**



Wanda is a moderate framed heifer with good thickness. She goes back to our 69Z bull who has left us some great cows.

**AI Bred - May 5, 2024, to Remitall-W Fire Storm ET 138L and pasture exposed from May 28, 2024 - August 1, 2024 to PBHR Crossfire 104G 22K**



## 54 PBHR **JESSICA** 127L 35L

FEMALE || C03111721 || PBHR 35L || MARCH 14 2023

TH 71U 719T MR HEREFORD 11X  
**RU BA 11X EXCALIBER 223F**  
RU BA 27A MO-MOOLA 233C

PCL 8Y DRIFTER 32D  
**LIAN 32D JESSICA 127F**  
HAROLDSONS JESSICA ET 25A

TH 122 71I VICTOR 719T  
TH 7N 45P RITA 71U  
WLB WINCHESTER POWERBALL 27A  
RU BA HOT ROSIE 227X  
NJW 73S W18 HOMEGROWN 8Y ET  
PCL DAHLILA 521X 30Z  
TH 89T 743 UNTAPPED 425X ET  
TL 5073 JESSICA 751U

| CE  | BW  | WW   | YW   | MM | TM   | BW      |
|-----|-----|------|------|----|------|---------|
| 5.3 | 2.9 | 58.9 | 90.7 | 28 | 57.5 | 78 lbs. |

## 55 PNHR MM **WANDA** 61E 57L

FEMALE || C03111714 || PBHR 57L || MARCH 22 2023

REMITALL-W RIO LOBO ET 26C  
**WCC 2023Z 26G GOVERNOR 2023G**  
SQUARE-D RITA 2023Z

MAR 233X ZAP 69Z  
**PBHR WANDA 8B 61E**  
MIL-WRAY SIERRA 8B

NJW 73S W18 HOMETOWN 10Y ET  
REMITALL MARVEL 78T  
REMITALL SUPER DUTY 42S  
SQUARE-D NADIA 323P  
MAR 120U OGRE 233X  
MA 86R TAMI 26L 8X  
GH ADAMS 179R STANLEY 180U  
MIL-WRAY CHRIS 9W

| CE  | BW  | WW   | YW | MM   | TM   | BW      |
|-----|-----|------|----|------|------|---------|
| 0.8 | 4.2 | 50.1 | 83 | 24.6 | 49.7 | 90 lbs. |





56

PBHR MM **PATTY** 52F 75L

FEMALE || C03111719 || PBHR 75L || MARCH 25 2023

WSF CAN-AM PRINCE 143  
**TIL-TOBA ELVIS 16S 11E**  
 TIL-TOBA SUNSHINE 9N 16S

MAR 233X ZAP 69Z  
**MANNS PATTY 49A 52F**  
 MANNS PATTY 32P 49A

RVP STAR 533P CAN-AM ET 57U  
 THM 71I PRINCESS PRIME 8695  
 DTHF MARLBOROUGH 44M  
 TIL-TOBA RADIANT 38H 9N  
 MAR 120U OGRE 233X  
 MA 86R TAMI 26L 8X  
 PBHR PRICE 42R 45U  
 MANNS PATTY 33L 32P

Patty has good length and smooth front end. She is out of the old Elvis bull whose daughters have worked very well for us.

**AI Bred – May 1, 2024 to Remitall-W Firestorm 138LET and pasture exposed from June 1, 2024 - August 1, 2024 to McCoy 858F Epic 11J**

| CE   | BW  | WW   | YW   | MM   | TM   | BW       |
|------|-----|------|------|------|------|----------|
| -6.1 | 5.6 | 54.4 | 85.7 | 19.6 | 46.8 | 101 lbs. |



Epic **SERVICE SIRE**

“**REAL SMOOTH**”  
*front end*  
 AND GOOD LENGTH



# RS REMITALL-W FIRE STORM ET 138L

MALE || C03106032 || REM 138L || MARCH 7 2023

R LEADER 6964  
**CHURCHILL RED BARON 8300F ET**  
 CHURCHILL LADY 500C ET

KCL WPF THE PROFESSOR 7110ET  
**REMITALL-W BELLE ET 45F**  
 REMITALL-WEST BELLE 36B

HYALITE ON TARGET 936  
 R MISS REVOLUTION 1009  
 CHURCHILL RED BULL 200Z  
 HVH OKSANA 4L 33N  
 TH 71U 719T MR HEREFORD 11X  
 KCL 29R MARY ANNE 23G 5R ET  
 REMITALL-WEST GAME DAY ET 74Y  
 REMITALL BELLE 132U

| CE  | BW  | WW   | YW   | MM   | TM   | BW      |
|-----|-----|------|------|------|------|---------|
| 6.7 | 1.4 | 61.8 | 95.6 | 32.6 | 63.5 | 86 lbs. |



# RS MCCOY 858F EPIC 11J

MALE || C03084938 || ZTM 11J || JANUARY 29 2021

SHF YORK 19H Y02  
**CHURCHILL BROADWAY 858F**  
 CHURCHILL LADY 640D

MCCOY 70Y SKYFALL 53A  
**MCCOY 53A CONNIE 127E**  
 MCCOY P20 CONNIE 20A

MSU MF HUDSON 19H  
 LOEWEN MISS P20 10W  
 KCF BENNETT ENCORE Z311 ET  
 CHURCHILL LADY 4164B  
 JDH 117R EQUITY 70Y ET  
 MCCOY 25M ALISON 64W  
 SHF PROGRESS P20  
 MCCOY 135S CONNIE ET 582Y

| CE  | BW  | WW | YW   | MM   | TM   | BW      |
|-----|-----|----|------|------|------|---------|
| 8.4 | 1.7 | 57 | 89.3 | 28.3 | 56.8 | 85 lbs. |



# RS SHF HORIZON D287 H022 ET

MALE || C03083637 || H022 || JANUARY 29 2020

SHF YORK 19H Y02  
**SHF DAYBREAK Y02 D287 ET**  
 SHF MISS M326 T08 ET

GERBER ANODYNE 001A  
**SHF TIME 001A D81**  
 SHF TIME 42X A140

MSU MF HUDSON 19H  
 LOEWEN MISS P20 10W  
 KCF BENNETT 3008 M326  
 SHF POSTIVE MISS 73C M15  
 KCF BENNETT 9126J R294  
 GERBER 627S HOLLY 096Y  
 K&B SENTINEL 0042X  
 KJ 796P TIMEWISE 006W ET

| CE   | BW   | WW   | YW   | MM   | TM   | BW |
|------|------|------|------|------|------|----|
| 15.1 | -1.7 | 63.3 | 99.2 | 28.4 | 60.1 | -  |



# RS RU BA 11X EXCALIBUR 223F

MALE || C03048791 || EKD 223F || FEBRUARY 19 2018

TH 122 71I VICTOR 719T  
**TH 71U 719T MR HEREFORD 11X**  
 TH 7N 45P RITA 71U

WLB WINCHESTER POWERBALL 27A  
**RU BA 27A MO-MOOLA 233C**  
 RU BA HOT ROSIE 227X

DRF JWR PRINCE VICTOR 71I  
 KBCR 19D DOMINETTE 122  
 NJW FHF 9710 TANK 45P  
 TH 814H 3L RITA 7N  
 WLB LEGO 83T 90X  
 WLB 503W ALICE ET 8401Y  
 REMITALL HEATER 161U  
 BLAIR-ATHOL 101 ROSIE 16S

| CE  | BW  | WW   | YW   | MM   | TM   | BW      |
|-----|-----|------|------|------|------|---------|
| 2.8 | 4.5 | 62.5 | 86.7 | 26.5 | 57.8 | 97 lbs. |







57

HAROLDSON'S **JANE** 254G 15M

FEMALE || C03116367 || AFSY 15M || FEBRUARY 07 2024

NJW 73S 38W RIDGE 103C ET  
**NJW 139C 103C RIDGE 254G**  
NJW 149Z 88X LEXY 139C ET

HAROLDSON'S WLC RENO ET 15W  
**BLAIR'S 15W 40C JANE 40E**  
HAROLDSON'S JANE 48Y 40C

NJW 76S P20 BEEF 38W ET  
NJW P606 72N DAYDREAM 73S  
NJW 98S R117 RIBEYE 88X ET  
NJW 27R 100W LEXY 149Z  
HARVIE RAFTSMAN 16R  
HAROLDSON'S 37H MIRA ET 62K  
H PF WYARNO 3902 ET  
HAROLDSON'S JANE 29R 54W

| CE  | BW  | WW   | YW   | MM   | TM   | BW      |
|-----|-----|------|------|------|------|---------|
| 2.6 | 2.2 | 56.6 | 87.8 | 31.4 | 59.7 | 86 lbs. |

This Ridge daughter is super powerful and robust through the center portion of her body and out her hip. She's a half sister to Breaker 4J, who was purchased by ANL and also the sire of Memphis 6L. She has hit the winner's circle already, being crowned Senior Heifer Calf Champion at her first outing. I think there's a big-time future with this one.



Ridge **SIRE**

“**QUALITY**”  
*and* **COW POWER**





58



59

## 58 HAROLDSON'S AD **MARVEL** ET 40M

FEMALE || W654569 || AFSY 40M || FEBRUARY 20 2024

BOYD 31Z BLUEPRINT 6153  
**RST FINAL PRINT 0016**  
RST MS X651 TESTED 8032

HAROLDSON'S UNITED 33D 36G  
**HAROLDSON'S MARVEL 36G ET 44J**  
HAROLDSON'S WLC MIRA ET 52B  
HAROLDSON'S WLC RHINO ET 48Y  
HAROLDSON'S HLV MARVEL 48Y 12B HAROLDSON'S MARVEL 45P 5W

R LEADER 6964  
NJW 91H 100W RITA 31Z ET  
EFBEEF TFL U208 TESTED X651 ET  
RST MS 0124 TIMESAWASTIN 6094  
HAROLDSON'S UPGRADE T100 33D  
HAROLDSON'S WLC MIRA ET 52B  
HAROLDSON'S WLC RHINO ET 48Y  
HAROLDSON'S HLV MARVEL 48Y 12B HAROLDSON'S MARVEL 45P 5W

| CE   | BW  | WW   | YW    | MM   | TM   | BW      |
|------|-----|------|-------|------|------|---------|
| -0.9 | 2.5 | 72.6 | 111.2 | 27.5 | 63.8 | 84 lbs. |

## 59 HAROLDSON'S AD **MARVEL** ET 31M

FEMALE || W654707 || AFSY 31M || FEBRUARY 17 2024

BOYD 31Z BLUEPRINT 6153  
**RST FINAL PRINT 0016**  
RST MS X651 TESTED 8032

HAROLDSON'S UNITED 33D 36G  
**HAROLDSON'S MARVEL 36G ET 44J**  
HAROLDSON'S WLC MIRA ET 52B  
HAROLDSON'S WLC RHINO ET 48Y  
HAROLDSON'S HLV MARVEL 48Y 12B HAROLDSON'S MARVEL 45P 5W

R LEADER 6964  
NJW 91H 100W RITA 31Z ET  
EFBEEF TFL U208 TESTED X651 ET  
RST MS 0124 TIMESAWASTIN 6094  
HAROLDSON'S UPGRADE T100 33D  
HAROLDSON'S WLC MIRA ET 52B  
HAROLDSON'S WLC RHINO ET 48Y  
HAROLDSON'S HLV MARVEL 48Y 12B HAROLDSON'S MARVEL 45P 5W

| CE   | BW  | WW | YW    | MM   | TM | BW      |
|------|-----|----|-------|------|----|---------|
| -1.3 | 2.6 | 73 | 111.9 | 27.5 | 64 | 84 lbs. |

These 2 Marvels are part of a very successful flush. Both these females are well balanced and complete in their makeup with some extra color and cosmetics. Watch for some full brothers to be headliners in our bull sale. Big numbered heifers out of one of the best cow families in the land. Investing in ones like these should prove to be very profitable.





Here's a very nice Final Print out of a beautiful Upgrade 2 year old. This female is long and extremely well balanced. Extra pigmentation and cosmetics are an added bonus on this genetic gem. Beautiful teat placement on this female, which her stellar teat and udder scores certainly indicated, she should turn out to be a beautiful young female. Very pleased with these Final Print offspring.

60



This Pavati granddaughter is out of a beautiful young female from the Phantom Creek dispersal. There's plenty enough power in this package when you check out her date of birth. She's big middled and big hiped. Heifers like these are definitely the herd building kind.

61

60

HAROLDSONS RBCC

MARVEL

11M

FEMALE || W654913 || AFSY 11M || FEBRUARY 04 2024

- BOYD 31Z BLUEPRINT 6153  
RST FINAL PRINT 0016  
RST MS X651 TESTED 8032
- HAROLDSON'S UPGRADE T100 33D  
RST FINAL PRINT 0016  
HAROLDSON'S MARVEL 33D 17K  
HAROLDSON'S MARVEL 48Y 46E
- R LEADER 6964  
NJW 91H 100W RITA 31Z ET  
EFBEEF TFL U208 TESTED X651 ET  
RST MS 0124 TIMESAWASTIN 6094  
SHF TAHOE R117 T100  
MOHICAN MISSEY 93W  
HAROLDSONS WLC RHINO ET 48Y  
HAROLDSON'S MARVEL 40S 2U

| CE  | BW  | WW   | YW    | MM | TM   | BW      |
|-----|-----|------|-------|----|------|---------|
| 0.4 | 2.5 | 72.2 | 111.9 | 30 | 66.1 | 76 lbs. |

61

HAROLDSON'S

BLANCHE

47J 84M

FEMALE || C03116696 || AFSY 84M || MARCH 26 2024

- HAROLDSON'S SCC PAVATI 48G  
HAROLDSON'S TRIUMPH 48G 47J  
HAROLDSONS ZENA 425X 47Z
- PCL A191 GREY GOOSE 42G  
PCL 42G BLANCHE 2J  
LIAN 5D BLANCHE 120G
- HAROLDSON'S TRACTION ET 50E  
HAROLDSON'S WSF LASSIE 48Y 42C  
TH 89T 743 UNTAPPED 425X ET  
MCCOY 532M ZENA 26R  
SHF ALL STAR 42X A191  
PCL 25Z LADY LUCK 54D  
HAROLDSON'S TOTEM 200Z 5D  
LIAN 100W BLANCHE 113Z

| CE  | BW  | WW   | YW   | MM   | TM   | BW      |
|-----|-----|------|------|------|------|---------|
| 5.8 | 2.2 | 54.6 | 85.3 | 30.3 | 57.6 | 78 lbs. |





62

HAROLDSON'S **LADY** 12K 54M

FEMALE || C03116369 || AFSY 54M || MARCH 05 2024

HAROLDSON'S JVJ ROYAL 24E  
**HAROLDSON'S HIGH COUNTRY 12K**  
 HAROLDSON'S ROBYN 48Y 113D

HAROLDSON'S TOTEM 200Z 5D  
**HAROLDSON'S LADY 5D 22F**  
 RVP 45S YULETIDE LADY 16Y

H BK CCC SR GAME CHANGER ET  
 HAROLDSON'S AD JESSICA 48Y 13B  
 HAROLDSON'S WLC RHINO ET 48Y  
 BAR-J-M ROBYN 16Y

CHURCHILL RED BULL 200Z  
 BLAIR'S NELLIE R117 ET 5B  
 STAR 2013 BATTLE CRY 45S  
 RVP 115N WINTER LADY 30W

I absolutely love this female, and if you toured pastures with me this summer, that probably was not hard to tell. I love the hip, the middle, the balance, the structural integrity, and the look at me attitude on this vixen. When you use a new bull and especially when it's one you raised, I think both the expectations and the anticipation are very high. Lady 54M has surpassed my highest expectations.

**Retaining a future flush at buyer's convenience.**

| CE  | BW  | WW   | YW   | MM   | TM   | BW      |
|-----|-----|------|------|------|------|---------|
| 3.1 | 4.2 | 49.5 | 83.3 | 26.1 | 50.9 | 84 lbs. |



“A REAL VIXEN”  
*look at me*  
**ATTITUDE**  
 HIP • MIDDLE • BALANCE  
 • STRUCTURAL INTEGRITY •





**63** HAROLDSON'S **MARVEL** 12K ET 32M

FEMALE || W654566 || AFSY 32M || FEBRUARY 18 2024

HAROLDSON'S JVJ ROYAL 24E  
**HAROLDSON'S HIGH COUNTRY 12K**  
HAROLDSON'S ROBYN 48Y 113D

HAROLDSONS WLC RHINO ET 48Y  
**HAROLDSON'S HLV MARVEL 48Y 12B**  
HAROLDSON'S MARVEL 45P 5W

H BK CCC SR GAME CHANGER ET  
HAROLDSON'S AD JESSICA 48Y 13B  
HAROLDSONS WLC RHINO ET 48Y  
BAR-J-M ROBYN 16Y

SHF TAHOE R117 T100  
HAROLDSON'S 37H MIRA ET 62K  
NJW FHF 9710 TANK 45P  
REMITALL MARVEL 190S

Extremely happy with our first set of High Country calves. This Marvel daughter is real hard to put a hole in and continually impresses you more each time you see her. Very well balanced, clean in her lines and sounds as they come. Very excited to get High Country's out into production, this lady being out of 12B should have that extra punch in production when her show career is done.

| CE  | BW  | WW   | YW   | MM   | TM   | BW      |
|-----|-----|------|------|------|------|---------|
| 1.6 | 4.9 | 52.6 | 86.5 | 24.8 | 51.1 | 82 lbs. |



Marvel 12B **DAM**

**“POWER IN**  
*the blood*”





## 64 HAROLDSON'S **ART WORK** ET 65M

FEMALE || W654601 || AFSY 65M || MARCH 16 2024

HAROLDSON'S JVJ ROYAL 24E  
**HAROLDSON'S HIGH COUNTRY 12K**  
 HAROLDSON'S ROBYN 48Y 113D

NJW 103Y 174X DIABLO 156C ET  
**GLENLEES MHPH 156 ART WRK 136E**  
 GLENLEES 106A ART WORK 13C

H BK CCC SR GAME CHANGER ET  
 HAROLDSON'S AD JESSICA 48Y 13B  
 HAROLDSON'S WLC RHINO ET 48Y  
 BAR-J-M ROBYN 16Y

NJW 76S 4037 DURANGO SPIRIT 174X  
 NJW 101U 100W SPIRITQUEEN103Y  
 MHPH 521X ACTION 106A  
 RVP STAR 45S SAY YES 53Y

This younger High Country is extremely high on my list. First off, the Artwork cow family has sure been productive here, and I think this one is the best yet. She's really square and level in her hip design, which in turn adds to her structural soundness. I really love the look and the presence she has and think she will be tough to tango with next summer, if her new owner chooses. Don't be afraid to tie into this one.

| CE  | BW  | WW   | YW   | MM   | TM   | BW      |
|-----|-----|------|------|------|------|---------|
| 2.8 | 3.5 | 51.7 | 86.3 | 24.8 | 50.7 | 84 lbs. |



High Country **SIRE**

**“STRUCTURAL”**  
*soundness*  
**SQUARE & LEVEL DESIGN**





I really like this Action daughter out of the 44J donor. She's short marked with some added look and balance to her. Her mother has been very productive right out of the gate and has a great set of ET calves on the ground this year.

Maternal sister to lots 58 & 59.

**Bred to RST Final Print 0016 on April 24, 2024.**



Here's a very complete heifer with lots of body and mass to her. When you scan through this pedigree, there are a lot of big-time cows and big-time cow makers in it. Lots of data to back this female up as well.

**Bred to Haroldson's Memphis 4J 6L on April 23, 2024.**

65

HAROLDSON'S AD **MARVEL** 31J 14L

FEMALE || C03117150 || AFSY 14L || FEBRUARY 10 2023

BROOKS 106A 30B ACTION 1F  
**BROOKS 1F 12B ACTION 31J**  
BROOKS 425X SALLY 12B

HAROLDSON'S UNITED 33D 36G  
**HAROLDSON'S MARVEL 36G ET 44J**  
HAROLDSON'S HLV MARVEL 48Y 12B

MHPH 521X ACTION 106A  
GLENLEES DBK 10Y ART WORK 30B  
TH 89T 743 UNTAPPED 425X ET  
BROOKS 83U SALLY 8X  
HAROLDSON'S UPGRADE T100 33D  
HAROLDSON'S WLC MIRA ET 52B  
HAROLDSON'S WLC RHINO ET 48Y  
HAROLDSON'S MARVEL 45P 5W

| CE  | BW  | WW   | YW   | MM   | TM   | BW      |
|-----|-----|------|------|------|------|---------|
| 0.1 | 3.7 | 59.9 | 95.8 | 23.9 | 53.9 | 82 lbs. |

66

HAROLDSON'S **LADY** 81E 8L

FEMALE || C03106151 || AFSY 8L || JANUARY 31 2023

CHURCHILL SENSATION 028X  
**NJW 160B 028X HISTORIC 81E ET**  
NJW 73S 38W DAYDREAM 160B

UPS DOMINO 3027  
CHURCHILL LADY 7202T ET  
NJW 76S P20 BEEF 38W ET  
NJW P606 72N DAYDREAM 73S  
BNMHPH 13P HEAT 101S  
MHPH MS 68M NITA 1112R  
NJW 73S M326 TRUST 100W ET  
THM 3144 VESPER 6018

MHPH 101S UMPIRE 118U  
**PCL 118U GRACEFUL LADY 22J**  
RVP 100W GRACEFUL 73G

| CE  | BW | WW   | YW   | MM   | TM   | BW      |
|-----|----|------|------|------|------|---------|
| 2.8 | 2  | 55.5 | 86.9 | 35.6 | 63.4 | 84 lbs. |





## 67 HAROLDSON'S **GEORGIA** 203D 1L

FEMALE || C03117301 || AFSY 1L || JANUARY 06 2023

NJW 135U 10Y HOMETOWN 27A  
**NJW 76S 27A LONG RANGE 203D ET**  
 NJW 55N STARDUST 76S

RVP W18 DIRECTION ET 119D  
**MF 9D GEORGIA 119D 906G**  
 RVP 100W DARLING 9D

NJW 73S W18 HOMETOWN 10Y ET  
 NJW 4037 34S DURANGO VACA 135U  
 NJW BW TRAILDUST 161L  
 NJW 57G SPIRIT QUEEN 55N ET  
 SHF WONDER M326 W18 ET  
 STAR ROSE GARDON 13X ET  
 NJW 73S M326 TRUST 100W ET  
 DOSS FISHIN IN THE DARK DHZ8

It won't be hard to find this one on sale day. This freckle faced, red eyed, short marked female is big bodied and easy doing, but still has a lot of style and a great look to her. Her mother is proving to be a very productive female. When you analyze her genetic profile, the data and her "wow" factor, I think this one will find a donor pen rather quickly.

**Bred to Haroldson's Memphis 4J 6L on April 20, 2024. Retaining the right to a future flush at the buyer's convenience.**

| CE  | BW  | WW   | YW   | MM   | TM | BW      |
|-----|-----|------|------|------|----|---------|
| 6.1 | 2.1 | 60.5 | 98.6 | 31.7 | 62 | 72 lbs. |



Long Range **SIRE**



Memphis **SERVICE SIRE**





This big bodied, long made Missey female is going to be an exciting and productive cow by the looks of things. Her mother, 24G, is proving to be one of the most productive females on the ranch. As an added bonus she was bred early to Final Print on April 20th.

**AI bred to RST Final Print 0016 on April 20, 2024.**



A real nice Pavati daughter out of a great cow family that excels in both production and longevity. Our Pavati daughters are proving to be some of our best young cows. Be sure to check this one out. As an added bonus she's bred May 4th to Final Print.

**AI bred to RST Final Print 0016 on May 4, 2024.**

**68** HAROLDSON'S JCC **MISSEY** 29L

FEMALE || C03106154 || AFSY 29L || FEBRUARY 19 2023

BCC DOMINATOR 619D  
**SR DOMINATE 308F ET**  
CHURCHILL LADY 1162Y ET

SHF TAHOE R117 T100  
**HAROLDSON'S MISSEY T100 25G**  
MOHICAN MISSEY 93W

CL 1 DOMINO 215Z  
BCC MISS BELL 206Z  
GOLDEN-OAK OUTCROSS 18U  
DCC 8006 PATTI 4266 ET  
SHF RIB EYE M326 R117  
SHF LADY 512 L73  
MOHICAN RANGELAND 221R  
MOHICAN MISSEY 401R ET

| CE   | BW  | WW   | YW    | MM   | TM   | BW      |
|------|-----|------|-------|------|------|---------|
| -7.1 | 6.2 | 64.6 | 108.3 | 27.6 | 59.9 | 91 lbs. |

**69** HAROLDSON'S **LADY** 48G 244L

FEMALE || C03117151 || AFSY 244L || FEBRUARY 16 2023

HAROLDSON'S TRACTION ET 50E  
**HAROLDSON'S SCC PAVATI 48G**  
HAROLDSON'S WSF LASSIE 48Y 42C

HAROLDSON'S JVJ ROYAL 24E  
**HAROLDSON'S LADY 24E 36H**  
RVP 45S YULETIDE LADY 16Y

R LEADER 6964  
HAROLDSON'S MARVEL 45P 5W  
HAROLDSONS WLC RHINO ET 48Y  
HAROLDSON'S LASSIE 425X 22Z  
H BK CCC SR GAME CHANGER ET  
HAROLDSON'S AD JESSICA 48Y 13B  
STAR 2013 BATTLE CRY 45S  
RVP 115N WINTER LADY 30W

| CE  | BW  | WW   | YW   | MM   | TM | BW      |
|-----|-----|------|------|------|----|---------|
| 1.7 | 3.7 | 54.7 | 84.4 | 31.6 | 59 | 79 lbs. |





# 70 HAROLDSON'S **MARVEL** ET 79L

FEMALE || C03111392 || AFSY 79L || MARCH 27 2023

BCC DOMINATOR 619D  
**SR DOMINATE 308F ET**  
 CHURCHILL LADY 1162Y ET

HAROLDSONS WLC RHINO ET 48Y  
**HAROLDSON'S HLV MARVEL 48Y 12B**  
 HAROLDSON'S MARVEL 45P 5W

CL 1 DOMINO 215Z  
 BCC MISS BELL 206Z  
 GOLDEN-OAK OUTCROSS 18U  
 DCC 8006 PATTI 4266 ET  
 SHF TAHOE R117 T100  
 HAROLDSON'S 37H MIRA ET 62K  
 NJW FHF 9710 TANK 45P  
 REMITALL MARVEL 190S

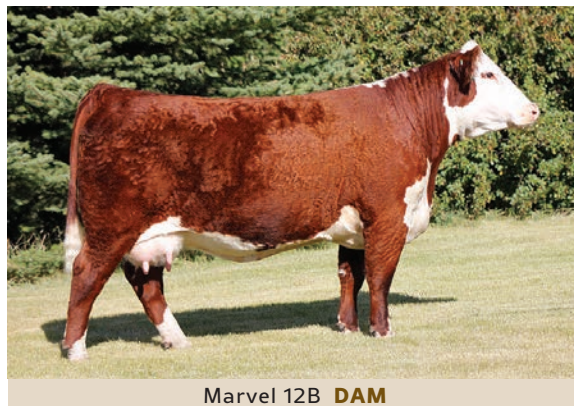
Very impressive female here. Marvel is big bodied and massive through that rib cage from front to back. Lots of depth of body and flank with a beautiful udder set up laying down. Her mother has been one of our most prolific donors and still gets it done.

**Bred to Haroldson's Memphis 4J 6L on April 19, 2024.**

| CE  | BW  | WW   | YW   | MM   | TM   | BW      |
|-----|-----|------|------|------|------|---------|
| 0.7 | 3.4 | 55.7 | 88.5 | 22.6 | 50.5 | 76 lbs. |



Dominate **SIRE**



Marvel 12B **DAM**





Marvel is a very attractive made Pavati daughter with great balance and structural soundness. Her mother is a big bodied, easy doing female that is easy to find. Be sure to study this female.

**Exposed to Haroldson's Genesis ET 122J from May 20 to July 10, 2024. Preg checked for an early service.**



Lots of power and length of body in this Pirate daughter. She's an attractive made female that is very sound made and structurally correct. I have always really liked this female.

**Bred to Haroldson's Memphis 4J 6L on April 24, 2024.**

71

HAROLDSON'S SCK **MARVEL** 48G 13L

FEMALE || C03117434 || AFSY 13L || FEBRUARY 09 2023

HAROLDSON'S TRACTION ET 50E  
**HAROLDSON'S SCC PAVATI 48G**  
HAROLDSON'S WSF LASSIE 48Y 42C

H DEBERARD 7454 ET  
**HAROLDSON'S MARVEL 7454 ET 30H**  
HAROLDSON'S HLV MARVEL 48Y 12B

R LEADER 6964  
HAROLDSON'S MARVEL 45P 5W  
HAROLDSONS WLC RHINO ET 48Y  
HAROLDSON'S LASSIE 425X 22Z  
UPS SENSATION 2296 ET  
RST GAT NST Y79D LADY 54B ET  
HAROLDSONS WLC RHINO ET 48Y  
HAROLDSON'S MARVEL 45P 5W

| CE  | BW  | WW   | YW   | MM   | TM   | BW      |
|-----|-----|------|------|------|------|---------|
| 1.7 | 4.9 | 64.3 | 93.7 | 30.3 | 62.5 | 89 lbs. |

72

HAROLDSON'S **LADY** 211H 84L

FEMALE || C03117154 || AFSY 84L || MARCH 25 2023

H FHF PILGRIM 8441 ET  
**HAROLDSON'S PIRATE ET 211H**  
HAROLDSON'S MARVEL 45P 5W

HAROLDSON'S TOTEM 200Z 5D  
**HAROLDSON'S LADY 5D 22F**  
RVP 45S YULETIDE LADY 16Y

CHURCHILL PILGRIM 632D ET  
WLL ZOIEY 3Z  
NJW FHF 9710 TANK 45P  
REMITALL MARVEL 190S  
CHURCHILL RED BULL 200Z  
BLAIR'S NELLIE R117 ET 5B  
STAR 2013 BATTLE CRY 45S  
RVP 115N WINTER LADY 30W

| CE   | BW  | WW   | YW   | MM   | TM | BW      |
|------|-----|------|------|------|----|---------|
| -1.9 | 4.5 | 53.8 | 84.8 | 29.1 | 56 | 86 lbs. |



This daughter of Pirate is very well balanced and has a nice broody look to her.

**Bred to Churchill Amsterdam 247K ET on May 13, 2024.**



This Pavati daughter is big bodied with that added depth of flank. Her mother is as productive as they get, and these Pavati daughters flat out work.

**Bred to Haroldson's Memphis 4J 6L on May 17 and exposed to Haroldson's Genesis ET 122J from June 10 to July 10, 2024. Preg checked safe to Memphis.**



## 73 HAROLDSON'S BELLE 211H 46L

FEMALE || C03117155 || AFSY 46L || MARCH 01 2023

H FHF PILGRIM 8441 ET  
**HAROLDSON'S PIRATE ET 211H**  
HAROLDSON'S MARVEL 45P 5W

LV ON THE JOB L 63B  
**LV BELLE L 32E**  
DXB 16R BELLE 17U

CHURCHILL PILGRIM 632D ET  
WLL ZOXY 3Z  
NJW FHF 9710 TANK 45P  
REMITALL MARVEL 190S  
REMITALL-WEST CONSTRUCTOR 21X  
REMITALL NETTIE 122R  
HARVIE RAFTSMAN 16R  
DXB 60G APRIL BELLE ET 61M

| CE   | BW  | WW   | YW   | MM   | TM | BW      |
|------|-----|------|------|------|----|---------|
| -3.3 | 4.8 | 55.2 | 85.6 | 25.4 | 53 | 88 lbs. |

## 74 HAROLDSON'S SCC MADONNA 49L

FEMALE || C03117157 || AFSY 49L || MARCH 02 2023

HAROLDSON'S TRACTION ET 50E  
**HAROLDSON'S SCC PAVATI 48G**  
HAROLDSON'S WSF LASSIE 48Y 42C

TH 122 71I VICTOR 521X ET  
**HAROLDSON'S MADONNA 521X 3Z**  
HAROLDSON'S WLC MADONNA ET 8N

R LEADER 6964  
HAROLDSON'S MARVEL 45P 5W  
HAROLDSON'S WLC RHINO ET 48Y  
HAROLDSON'S LASSIE 425X 22Z  
DRF JWR PRINCE VICTOR 71I  
KBCR 19D DOMINETTE 122  
REMITALL ONLINE 122L  
HAROLDSON'S 37H MIRA ET 62K

| CE | BW  | WW   | YW   | MM   | TM | BW      |
|----|-----|------|------|------|----|---------|
| 1  | 3.6 | 60.7 | 93.7 | 27.6 | 58 | 82 lbs. |





Very nice Pavati daughter here that should turn into a very nice, highly productive cow when you analyze her pedigree.  
**Exposed to Haroldson's Genesis ET 122J from May 20 to July 10, 2024. Preg checked to an early service.**



Here is a very complete-made Marvel female that should turn into a very practical easy doing cow.  
**Exposed to Haroldson's Genesis ET 122J from May 20 to July 10, 2024. Preg check to an early service.**

75

HAROLDSON'S **ROXY** 48G 62L

FEMALE || C03117152 || AFSY 62L || MARCH 11 2023

HAROLDSON'S TRACTION ET 50E  
**HAROLDSON'S SCC PAVATI 48G**  
HAROLDSON'S WSF LASSIE 48Y 42C

R LEADER 6964  
HAROLDSON'S MARVEL 45P 5W  
HAROLDSONS WLC RHINO ET 48Y  
HAROLDSON'S LASSIE 425X 22Z  
SHF TAHOE R117 T100  
HAROLDSON'S 37H MIRA ET 62K  
PW VICTOR BOOMER P606  
HAROLDSON'S ROXY 40J 87M

HAROLDSONS WLC RHINO ET 48Y  
**HAROLDSON'S ROXY 48Y 11D**  
HAROLDSONS ROXY P606 21Y

| CE  | BW  | WW   | YW   | MM   | TM | BW      |
|-----|-----|------|------|------|----|---------|
| 4.1 | 2.1 | 52.2 | 79.7 | 29.9 | 56 | 82 lbs. |

76

HAROLDSON'S **MARVEL** 31J 53L

FEMALE || C03106142 || AFSY 53L || MARCH 05 2023

BROOKS 106A 30B ACTION 1F  
**BROOKS 1F 12B ACTION 31J**  
BROOKS 425X SALLY 12B

MHPH 521X ACTION 106A  
GLENLEES DBK 10Y ART WORK 30B  
TH 89T 743 UNTAPPED 425X ET  
BROOKS 83U SALLY 8X  
HAROLDSON'S UPGRADE T100 33D  
HAROLDSON'S WLC MIRA ET 52B  
NJW FHF 9710 TANK 45P  
REMITALL MARVEL 190S

HAROLDSON'S UNITED 33D 36G  
**HAROLDSON'S MARVEL 36G ET 30J**  
HAROLDSON'S MARVEL 45P 5W

| CE   | BW | WW   | YW    | MM   | TM | BW      |
|------|----|------|-------|------|----|---------|
| -3.1 | 6  | 68.2 | 107.5 | 28.9 | 63 | 86 lbs. |



# RS RST FINAL PRINT 0016

MALE || C03103744 || 0016 || FEBRUARY 4 2020

R LEADER 6964  
**BOYD 31Z BLUEPRINT 6153**  
NJW 91H 100W RITA 31Z ET

EFBEEF TFL U208 TESTED X651 ET  
**RST MS X651 TESTED 8032**  
RST MS 0124 TIMESAWASTIN 6094

HYALITE ON TARGET 936  
R MISS REVOLUTION 1009  
NJW 73S M326 TRUST 100W ET  
REMITALL RITA 91H  
EFBEEF FOREMOST U208  
EFBEEF P606 MABEL R415  
RST TIME'S A WASTIN' 0124  
RST MS R117 RIB EYE 9009

| CE  | BW   | WW   | YW    | MM   | TM | BW |
|-----|------|------|-------|------|----|----|
| 6.8 | -1.3 | 84.6 | 125.7 | 36.7 | 79 | -  |



RS

# RS HAROLDSON'S HIGH COUNTRY 12K

MALE || C03096027 || AFSY 12K || FEBRUARY 6 2022

H BK CCC SR GAME CHANGER ET  
**HAROLDSON'S JVJ ROYAL 24E**  
HAROLDSON'S AD JESSICA 48Y 13B

HAROLDSON'S WLC RHINO ET 48Y  
**HAROLDSON'S ROBYN 48Y 113D**  
BAR-J-M ROBYN 16Y

KJ HVH 33N REDEEM 485T ET  
NJW 78P 63N LADYSPORT 51W ET  
HAROLDSON'S WLC RHINO ET 48Y  
HAROLDSON'S WS JESSICA 4T 60X  
SHF TAHOE R117 T100  
HAROLDSON'S 37H MIRA ET 62K  
MHPH 101S UMPIRE 118U  
BAR-J-M PENELOPE 45W

| CE  | BW | WW   | YW   | MM   | TM   | BW      |
|-----|----|------|------|------|------|---------|
| 4.3 | 5  | 49.3 | 83.9 | 24.6 | 49.3 | 88 lbs. |



RS

# RS HAROLDSON'S MEMPHIS 4J 6L

MALE || C03108540 || AFSY 6L || JANUARY 26 2023

H FHF PILGRIM 8441 ET  
**HAROLDSON'S BREAKER 8441 4J**  
BLAIR'S 15W 40C JANE 40E

HAROLDSON'S JVJ ROYAL 24E  
**HAROLDSON'S ROBYN 24E 44H**  
BAR-J-M ROBYN 16Y

CHURCHILL PILGRIM 632D ET  
WLL ZOEY 3Z  
HAROLDSON'S WLC RENO ET 15W  
HAROLDSON'S JANE 48Y 40C  
H BK CCC SR GAME CHANGER ET  
HAROLDSON'S AD JESSICA 48Y 13B  
MHPH 101S UMPIRE 118U  
BAR-J-M PENELOPE 45W

| CE  | BW  | WW   | YW   | MM   | TM | BW      |
|-----|-----|------|------|------|----|---------|
| 0.6 | 2.6 | 55.8 | 91.7 | 28.1 | 56 | 87 lbs. |



RS

# RS HAROLDSON'S SCC PAVATI 48G

MALE || C03061874 || AFSY 48G || MARCH 14 2019

R LEADER 6964  
**HAROLDSON'S TRACTION ET 50E**  
HAROLDSON'S MARVEL 45P 5W

HAROLDSON'S WLC RHINO ET 48Y  
**HAROLDSON'S WSF LASSIE 48Y 42C**  
HAROLDSON'S LASSIE 425X 22Z

HYALITE ON TARGET 936  
R MISS REVOLUTION 1009  
NJW FHF 9710 TANK 45P  
REMITALL MARVEL 190S  
SHF TAHOE R117 T100  
HAROLDSON'S 37H MIRA ET 62K  
TH 89T 743 UNTAPPED 425X ET  
GHC MISS LASSIE 3L

| CE  | BW  | WW   | YW   | MM   | TM   | BW      |
|-----|-----|------|------|------|------|---------|
| 4.9 | 3.2 | 60.1 | 87.4 | 36.5 | 66.6 | 86 lbs. |



RS



# FOR YOUR *NOTES*



## **HAROLDSON'S JCC JESSICA 75L**

Champion Female at Beef-A-Rama || Champion Female Heifer Lottery  
Congratulations Curtis Hewitt





# TERMS & CONDITIONS

**TERMS:**

The terms of the sale are cash or cheque, payable at par at the sale location. The right of property shall not pass until after settlement has been made; no invoicing on buyers in attendance unless previous arrangements have been made. Every animal sells to the highest bidder and in cases of disputes, the auctioneer's decision will be final. Announcements from the auction block will take precedence over the printed matter in the catalogue. Current exchange rates will be announced sale day. All monies are in Canadian funds.

**CERTIFICATE OF REGISTRATION:**

Each animal will carry papers issued by the Canadian Hereford Association. A certificate of registry duly transferred will be furnished to the buyer for each animal after payment has been made.

**PEDIGREE ESTIMATES:**

Pedigree Estimates (PE) are created on the projected mating of the animal's sire and dam based on averages of the two, creating estimated values that do not hold the same accuracy of actual EPDs issued from the association and should be used as such.

**HEALTH:**

All animals in the sale have met all necessary health requirements.

**GARANTEE:**

Each animal becomes the purchaser's risk immediately after the animal is sold. All animals in this sale will be sold under the terms and guarantees set forth by the Canadian Hereford Association with regard to health, freedom from defects and from both reproductive and specific genetic unsoundness.

**PREGNANCY INFORMATION:**

All serviceable age females have been pregnancy examined by an accredited veterinarian, giving an estimated length of gestation. This estimated gestation period shall be used only as a guideline to calving and is not a guarantee of actual service.

**EXPORT:**

Purchases going to the United States will be delivered at cost.

**LIABILITIES:**

All persons attend the sale at their own risk. The seller, facility owner and sale manager assume no liability legal or otherwise, for any accidents that occur. It is understood that T Bar C Cattle Co. (2013) Ltd. is acting only as a medium between buyer and seller and is not responsible for any failure on the part of either party to live up to his obligations. Neither does T Bar C Cattle Co. (2013) Ltd. assume any financial obligations to collect or enforce collection of any monies between parties and any legal action that may in exceptional cases be taken must be between the buyer and the seller. T Bar C Cattle Co. (2013) Ltd. assumes no responsibility for any credit extended by the seller to the buyer. The buyer must look to the seller for fulfillment of all guarantees and representations made hereunder.

**DELIVERY:**

Assistance will be given in getting your purchases home. Each animal becomes the risk of the purchaser as soon as sold.

**PHONE, MAIL, WIRE BIDS:**

Bidders unable to attend the sale may phone, wire or mail their bids and instructions to the sale manager, auctioneer or special representatives. Bids must be received in sufficient time prior to the sale.

**INSURANCE:**

We strongly recommend that insurance is purchased for full value.

**ERRORS:**

All announcements at sale time, written or oral, supercede any written material in the catalogue.



**RETURN UNDELIVERABLE  
CANADIAN ADDRESSES TO:**

T Bar C Cattle Co. Ltd.  
Box 2330  
Warman, SK S0K 4S0

