

Bonchuk Farms **FEMALE** *Sale*

DECEMBER 10, 2023 1:00PM

JA-LYN FARMS | JP CATTLE CO. FACILITY
MCAULEY, MB



Bonchuk Farms

FEMALE

Sale

DECEMBER 9 & 10, 2023
CATTLE WILL BE AT JP CATTLE CO. FOR VIEWING

DECEMBER 10, 2023 @ 1PM
BONCHUK FARMS FEMALE SALE

WELCOME TO THE BONCHUK FARMS FEMALE PRODUCTION SALE 2023 EDITION

This years sale offering is made up of industry leading pedigrees that are bred to top AI bulls or our calving ease sires. Past bloodline selections have added to the power of the cow herd. This diverse selection of deep bodied powerful made females make us proud to offer them at our annual sale. Our herd is on a complete vaccination program as listed in this catalogue. The heifers on offer are the kind that will go out and work for you.

We encourage all buyers to stop by the farm to view the sale offering. We also ask that you please call ahead and we would be happy to walk you through the sale group. Cattle can also be viewed at Ja-Lyn Farms/JP Cattle Co starting on Thursday, December 7th.

We will have Mark Shologan of DLMS Marketing Services live broad cast the sale so you can participate online if you cannot attend.

All heifers will be videoed before the sale and can be viewed at DLMS.

We look forward to working with all the TBarC crew. Chris and Shane have been through the offering and can assist you with your selection.

On Sunday, December 10th we would love to have you attend in person and we will treat you to our usual Bonchuk Farms hospitality!!

Great Cattle - Great Customers

After all these years its really that simple.

Merry Christmas to all our friends from all the crew at

Bonchuk Farms



Dave & Marnee Bonchuk
204-842-3706 or 204-773-0467
bonchukfarms99@gmail.com



Wayne & Charlene Bonchuk
204-796-0004
bonchuks@mymts.net



Tyler, Holly & Family
204-847-0798 or 204-847-0799

BOX 34, SOLSGIRTH, MB R0J 2B0 WWW.BONCHUKFARMS.COM

On Offer
101 HEAD OF...
BRED HEIFERS
FULLBLOODS
RED & BLACK PUREBREDS

UPCOMING EVENTS

Bonchuk Farms
BULL
Sale

HEARTLAND LIVESTOCK | VIRDEN, MB
MARCH 5, 2024 1:00PM

from the desk at T BAR...

make up this successful and productive program. Whether you are looking for reds, blacks, fullbloods and even blazes, this sale lineup is packed full of opportunities.

As you scan through the catalogue lineup, you will find that these females are mated with early services to proven pillars of the Simmental breed. This breeding establishment has spent years, selecting and developing cattle that are feed efficient, high yielding, sound and fertile. With the huge cow herd, they do not have time to make mistakes... their many repeat customers that attend their annual spring bull sale defines that the Bonchuk breeding program will add value to your breeding program. What a set of bred heifers... broody, high volume, tons of hair and capacity... designed to fit in the front pastures of the industry.

Feel free to stop by the farm any time prior to the sale, preview the offering in their familiar surroundings, check out the cow herd and have a peek at the brothers. The heifers will be in McAuley on the 8th and 9th. With this wild cattle market, these females will add increased assets to your breeding production... it will be worth the trip!

Plan to be with us on December 10th be it in person, online or on the phone. Feel free to contact any of the T Bar Team as we will be pleased to assist you with your selections and purchases in a confidential and professional manner.

Shane Michelson



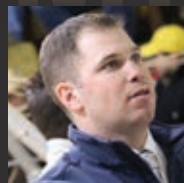
T Bar C Cattle Co. Ltd.
Box 2330
Warman, SK S0K 4S0
Ph: 306.933.4200
Fax: 306.934.0744
info@tbarc.com
www.buyagro.com



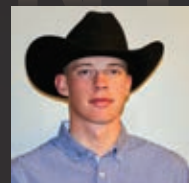
Chris Poley



Shane Michelson



Ben Wright



Levi Rimke

SALE MANAGEMENT

SALE DAY INFORMATION

SALE DAY PHONES

Chris Poley	306-220-5006
Shane Michelson	403-363-9973
Ben Wright	519-374-3335
Levi Rimke	204-851-4515
Dave & Marnee Bonchuk	204-842-3706 or 204-773-0467
Wayne & Charlene Bonchuk	204-796-0004

SALE STAFF

Auctioneer , Chris Poley	306-220-5006
Ringmen , Ben Wright	519-374-3335
Ringmen , Shane Michelson	403-363-9973

SALE CONSULTANTS

Bohrson Marketing	
Martin Bohrnson	306-220-7901
Scott Bohrnson	403-370-3010
Taylor Richards	306-821-4169
Cody Haney	403-845-8806
Darryl Snider	780-385-5561



CATALOGUE DESIGN



INSURANCE

Alameda Agencies Bonnie Thompson 306-489-2258

VIEW THE CATALOGUE ONLINE AT:

WWW.BUYAGRO.COM
WWW.BONCHUKFARMS.COM

WATCH & BID ONLINE

Internet Bidding Available

DLMS
www.dlms.ca

For more information call DLMS:
Mark Shologan 780.699.5082 or
DLMS Purebred Team 780.991.3025

REDS



Lot 1 BLCC *Miss Future* 2K

CIRCLE G EXPORT 51E
KWA FUTURE 3G
KWA MS MOUNTAIN 254E
MRL STATEMENT 3F \ HP-HOP
MRL MISS 0585H
MRL MISS 4392B

WHEATLAND BULL 334A
CIRCLE G RACHEL 5138C
KWA FLYF RED MOUNTAIN 16Z
DOUBLE BAR D FLO 626Z
R PLUS VENOM 4006B
MRL MISS 6600D \ HP-HOP
MRL 91Y
MRL MISS 555N

EPDS	CE	BW	WW	YW	MILK	MCE	MWWT	PERF	BW	WW
14.0	1.1	76.3	119.3	36	3.4	75.5			70 lbs	608 lbs

- ◆ POLLED
- ◆ PG1449365
- ◆ BLCC 2K
- ◆ 7/1/2022

A very complete daughter of Future that comes from a promising young female that was purchased from McMillan Ranching. 2K is loaded with capacity, volume, eye appeal and is great tempered. Bred to the great Red Rock, who had a tremendous impact in our program.

Bred May 8 to KWA Red Rock 5T. Exposed to Wheatland Affinity 8196F June 10 to July 10. Safe to AI date

Lot 2 ADBS *Miss Future* 31H

CIRCLE G EXPORT 51E
KWA FUTURE 3G
KWA MS MOUNTAIN 254E
MAF RED STANDARD 108C
ADBS MISS STANDARD 91H
ADBS MISS RIDGELINE 109A

WHEATLAND BULL 334A
CIRCLE G RACHEL 5138C
KWA FLYF RED MOUNTAIN 16Z
DOUBLE BAR D FLO 626Z
NUG ROYAL RED 324A
IPU 52N POCAHONTAS 215U
LFE BLACK RIDGELINE 536W
ADBS MISS UNDERTAKER 102U

EPDS	CE	BW	WW	YW	MILK	MCE	MWWT	PERF	BW	WW
12.3	1.7	73.3	106.2	24.9	6.5	61.6			89 lbs	640 lbs

- ◆ POLLED
- ◆ CA-PG1446834
- ◆ ADBS 31K
- ◆ 6/2/2022

A long-bodied female that is a daughter of Future, that looks like she will make a great brood cow. Lots of maternal power backing up this female. Bred to Red Rock.

Bred to KWA Red Rock 5T on May 10. Exposed to Wheatland Affinity 8196F June 10 to July 10, safe to AI date.



Lot 3 BLCC *Miss Desire* 42K

BCLR AMBITION E301
WHEATLAND BULL 921G
WHEATLAND LADY 6554D
KWA RED ROCK 5T
BLCC MISS RED ROCK 352A
BLCC MISS RED 213U

CDI AMBITION 255C
BCLR MISS AUTHORITY A301
WHEATLAND CIRCUIT BREAKER
WHEATLAND LADY 4242B
DAY RED PEPPER DOC 984R
KWA MS ROCK 7P
LAZY S BLACK 823P
BLCC MISS 214R

EPDS	CE	BW	WW	YW	MILK	MCE	MWWT	PERF	BW	WW
11.4	1.5	74	108.1	30.1	7.9	67.1			94 lbs	738 lbs

- ◆ POLLED
- ◆ CA-PG1446838
- ◆ BLCC 42K
- ◆ 10/2/2022

A long bodied, big volume female loaded with eye appeal, volume, capacity and should be destined for greatness. She comes from a model female that gets it done every year. Bred to the easy calving Approval.

Bred to Black Gold Approval 71E on May 8. Exposed to Wheatland Affinity 8196F June 10 to July 10. Safe to AI date.

Lot 4 BLCC Miss Desire 55K

BCLR AMBITION E301
WHEATLAND BULL 921G
WHEATLAND LADY 6554D
LFE RED RIDGE 809W
BLCC MISS RED RIDGE 224F
BLCC MISS 124R 183U

CDI AMBITION 255C
BCLR MISS AUTHORITY A301
WHEATLAND CIRCUIT BREAKER
WHEATLAND LADY 4242B
LFE MR LEWIS 462P
LFE KIRBIE 217N
BLCC 124R
BLCC MISS 13R

EPDS	CE	BW	WW	YW	MILK	MCE	MWWT	PERF	BW	WW
5.9	3.8	77.7	110.6	31.2	1.7	70.0	96 lbs	770 lbs		

- ◆ POLLED
- ◆ PG1449363
- ◆ BLCC 55K
- ◆ 12/2/2022

A high performing female that has that extra frame, volume, and dimension to make a front pasture female. 224F has produced exceptionally well for us. The service to Red Rock is exciting.

Bred to KWA Red Rock 5T on May 10 and May 30. Exposed to Wheatland Affinity 8196F June 10 to July 10. Safe to May 30 breeding.



Lot 5 BLCC Miss Braveheart 57K

SVS CAPTAIN MORGAN 11Z
SKORS BRAVEHEART 289G
SKORS FANCY THAT 200A
KWA RED ROCK 5T
BLCC MISS RED ROCK 117D
BLCC MISS RED 284T

HARVIE JDF WALLBANGER111X
SUNNYVALLEY BLK JENNA 88U
LBR CROCKET R81
SKORS MS DREAM ON 103T
DAY RED PEPPER DOC 984R
KWA MS ROCK 7P
LAZY S BLACK 823P
BLCC MISS LITA 94L

EPDS	CE	BW	WW	YW	MILK	MCE	MWWT	PERF	BW	WW
9	3.5	84.8	128.1	29.3	5.5	71.7	90 lbs	730 lbs		

- ◆ POLLED
- ◆ CA-PG1446919
- ◆ BLCC 57K
- ◆ 13/2/2022

An exciting future front pasture female that is loaded with capacity, volume, eye appeal and predictability. The cow family she descends from is one of our best producing maternal bloodlines that all have great track records. Bred to Approval, 57K will mature to be a powerful producer.

Bred to Black Gold Approval 7115 on May 3. Exposed to Wheatland Affinity 8196F June 10 to July 10. Safe to AI date.



Lot 6 BLCC Miss Affinity 58K

CCLT ALLIANCE 91C
WHEATLAND AFFINITY 8196F
WHEATLAND LADY 913W
KOP CROSBY 137W
BLCC MISS CROSBY 202H
BLCC MISS RED ROCK 39D

WS PILGRIM H182U
BROOKS SHINIA 1A
GOLDEN OPPORTUNITYHR R851
WHEATLAND LADY 751 T
MUIRHEAD LIVE WIRE 95R
KOP MS BENGIE 6P
KWA RED ROCK 5T
BLCC MISS REAL DEAL 5Y

EPDS	CE	BW	WW	YW	MILK	MCE	MWWT	PERF	BW	WW
8.5	3.3	72.2	98.4	28.8	5.8	64.9	86 lbs	610 lbs		

- ◆ POLLED
- ◆ CA-PG1446839
- ◆ BLCC 58K
- ◆ 13/2/2022

A moderate, deep ribbed Affinity daughter that should make a great producer. The Affinity daughters we have in production are proving to be model females, all milk extremely well and maintain themselves wonderfully. Bred to Appeal for an exciting calf.

Bred to Black Gold Approval 71E on May 20. Exposed to Wheatland Affinity 8196F June 10 to July 10. Safe to AI date.

Lot 7 BLCC Miss Braveheart 67K

SVS CAPTAIN MORGAN 11Z
SKORS BRAVEHEART 289G
SKORS FANCY THAT 200A
R PLUS 110X
BLCC MISS SLEDGE 198A
BLCC MISS RED ROCK 38W

HARVIE JDF WALLBANGER111X
SUNNYVALLEY BLK JENNA 88U
LBR CROCKET R81
SKORS MS DREAM ON 103T
R PLUS REDGE 8018U
MISS R PLUS 006K
KWA RED ROCK 5T
BLCC MISS GOODANUFF 16S

EPDS	CE	BW	WW	YW	MILK	MCE	MWWT	PERF	BW	WW
7.5	4.7	85.9	129	27.1	5.2	70.1	96 lbs	725 lbs		

- ◆ POLLED
- ◆ CA-PG1446840
- ◆ BLCC 67K
- ◆ 14/2/2022

Another powerful Braveheart daughter that will prove to be an excellent producer. 67K has incredible performance, capacity, eye appeal and another no-nonsense cow family behind her that gets it done every year. Bred to Approval.

Bred to Black Gold Approval 71E on May 1. Exposed to Wheatland Affinity 8196F June 10 to July 10. Safe to AI date.

Lot 8 BLCC *Miss Commander* 68K

CDI AUTHORITY 77X
KWA AUTHORITY 46G
KWA MS ROCK 138Z
KOP PONDEROSA 144Y
BLCC MISS PONDEROSA 107B
BLCC MISS STING 105Y

NF TRUMP 5582
CDI MS CROCKET 88T
KWA RED ROCK 5T
TLR SASHA
CMS TRADMARK 756T
KOP MS BENGIE 6P
TNT STING M377
BLCC MISS 84R

EPDS	CE	BW	WW	YW	MILK	MCE	MWWT	PERF	BW	WW
	7.1	4.2	85.6	128	26.4	2.9	69.2		92 lbs	720 lbs

- ◆ POLLED
- ◆ CA-PG1446842
- ◆ BLCC 68K
- ◆ 14/2/2022

A long bodied powerfully made female that should be a producer. We have been very impressed with the progeny from our Authority son. Bred to the great Red Rock for an exciting calf this winter.

Bred to KWA Red Rock 5T on May 20. Exposed to Wheatland Affinity 8196F June 10 to July 10. Safe to AI date.

Lot 9 BLCC *Miss Braveheart* 70K

SVS CAPTAIN MORGAN 11Z
SKORS BRAVEHEART 289G
SKORS FANCY THAT 200A
LFE ROCHFORD 3013T
BLCC MISS ROCHFORD 292Y
BLCC MISS 55R

HARVIE JDF WALLBANGER111X
SUNNYVALLEY BLK JENNA 88U
LBR CROCKET R81
SKORS MS DREAM ON 103T
LFE MR LEWIS 514N
LFE CALYNA 31M
HOOK'S RED QUORUM 55H
BLCC MISS 128N

EPDS	CE	BW	WW	YW	MILK	MCE	MWWT	PERF	BW	WW
	6.3	4.7	86	133.6	24.3	4.2	67.3		90 lbs	665 lbs

- ◆ POLLED
- ◆ CA-PG1446844
- ◆ BLCC 70K
- ◆ 15/2/2022

A big volume, deep ribbed, powerful Braveheart daughter that you can't help but notice with her outstanding phenotype and eye appeal. Braveheart has certainly done a fabulous job siring great progeny and 70K is no exception. 292Y continues to outdo herself every year. Her Affinity calf should be spectacular.

Bred to Wheatland Affinity 8196F on May 4. Exposed to Affinity June 10 to July 10. Safe to AI date.

Lot 10 BLCC *Miss Braveheart* 71K

SVS CAPTAIN MORGAN 11Z
SKORS BRAVEHEART 289G
SKORS FANCY THAT 200A
LFE ROCHFORD 3013T
BLCC MISS ROCHFORD 292Y
BLCC MISS 55R

HARVIE JDF WALLBANGER111X
SUNNYVALLEY BLK JENNA 88U
LBR CROCKET R81
SKORS MS DREAM ON 103T
LFE MR LEWIS 514N
LFE CALYNA 31M
HOOK'S RED QUORUM 55H
BLCC MISS 128N

EPDS	CE	BW	WW	YW	MILK	MCE	MWWT	PERF	BW	WW
	6.3	4.7	86	133.6	24.3	4.2	67.3		86 lbs	655 lbs

- ◆ POLLED
- ◆ CA-PG1446845
- ◆ BLCC 71K
- ◆ 15/2/2022

Twin to 70K, 71K is a female that will be capable of big-time production with minimal maintenance. Bred to Affinity for a great calf this spring.

Exposed to Wheatland Affinity 8196F June 10 to July 10.

Lot 11 BLCC *Miss Braveheart* 72K

NUG ROYAL RED 324A
MAF RED STANDARD 108C
IPU 52N POCAHONTAS 215U
KWA RED ROCK 5T
BLCC MISS RED ROCK 157A
BLCC MISS 124R 353U

LFE BLACK LAKOTA 385W
TRIPLE C SMARTY PANTS R
TNT ACCELERATOR S226
IPU RED POCAHONTAS 52N
DAY RED PEPPER DOC 984R
KWA MS ROCK 7P
BLCC 124R
CIRCLE L BAMBI 144R

EPDS	CE	BW	WW	YW	MILK	MCE	MWWT	PERF	BW	WW
	9.4	2.9	68.3	101.1	22.1	6.1	56.3		92 lbs	707 lbs

- ◆ POLLED
- ◆ CA-PG1446847
- ◆ BLCC 72K
- ◆ 15/2/2022

Braveheart certainly stamps his calf crop with do-ability and eye appeal, and 72K is no exception. Lots of capacity and rib shape and looks like she will have a great udder. 157A is a model Red Rock daughter that we wish we had a hundred of. Look for a great Approval calf from her.

Braveheart certainly stamps his calf crop with do-ability and eye appeal, and 72K is no exception. Lots of capacity and rib shape and looks like she will have a great udder. 157A is a model Red Rock daughter that we wish we had a hundred of. Look for a great Approval calf from her.



Lot 12 BLCC *Miss Finest* 74K

MRL RED WHISKEY 101B
PWK GIBSONS FINEST 6Y 52E
PWK MS PAULA 39W 6Y

KWA RED ROCK 5T
BLCC MISS RED ROCK 310Y
BLCC MISS TEDDY 13U

TNT BOOTLEGGER Z268
MRL MISS 677Y
SUNNY VALLEY WISE GUY 80W
PWK MS PAULA 122P 39W
DAY RED PEPPER DOC 984R
KWA MS ROCK 7P
WHEATLAND RED TEDDY 457P
BLCC MISS RED LABEL 248S

EPDS	CE	BW	WW	YW	MILK	MCE	MWWT	PERF	BW	WW
8.9	3.4	81.1	122.6	29.7	8.4	70.3			90 lbs	680 lbs

- ◆ POLLED
- ◆ CA-PG1446850
- ◆ BLCC 74K
- ◆ 15/2/2022

These Gibsons Finest daughters have turned out to be great producers, they are easy keeping females that have great udders and are full of predictability. 74K is a long-bodied female that will make a super brood cow. Bred to Affinity.

Bred to Wheatland Affinity 8196F on May 9. Exposed to same June 10 to July 10. Safe to AI date.

Lot 13 BLCC *Miss Braveheart* 80K

SVS CAPTAIN MORGAN 11Z
SKORS BRAVEHEART 289G
SKORS FANCY THAT 200A

MAF RED STANDARD 108C
BLCC MISS STANDARD 323G
BLCC MISS SLEDGE 277B

HARVIE JDF WALLBANGER 111X
SUNNY VALLEY BLK JENNA 88U
LBR CROCKET R81
SKORS MS DREAM ON 103T
NUG ROYAL RED 324A
IPU 52N POCAHONTAS 215U
R PLUS 110X
BLCC MISS TEDDY 14W

EPDS	CE	BW	WW	YW	MILK	MCE	MWWT	PERF	BW	WW
7	4.3	82.8	123	24.8	4.3	66.2			90 lbs	670 lbs

- ◆ POLLED
- ◆ CA-PG1446851
- ◆ BLCC 80K
- ◆ 17/2/2022

A dark red Braveheart daughter that comes from a productive cow family. 80K has a lot of eye appeal, moderate frame and should be a producer. Bred to Affinity.

Exposed to Wheatland Affinity 8196F June 10 to July 10.



147J
maternal sister to 80K

Lot 14 BLCC *Miss Braveheart* 84K

SVS CAPTAIN MORGAN 11Z
SKORS BRAVEHEART 289G
SKORS FANCY THAT 200A

KOP CROSBY 137W
KOP MS CROSBY 308Y
KOPL PAMALA 75P

HARVIE JDF WALLBANGER 111X
SUNNY VALLEY BLK JENNA 88U
LBR CROCKET R81
SKORS MS DREAM ON 103T
MUIRHEAD LIVE WIRE 95R
KOP MS BENGIE 6P
PORTERHOUSE JUSTIN 55J
NORTHERNLIGHT MISS KESSI

EPDS	CE	BW	WW	YW	MILK	MCE	MWWT	PERF	BW	WW
4.6	5.2	81.3	121.5	29.8	3.6	70.5			98 lbs	725 lbs

- ◆ POLLED
- ◆ CA-PG1446852
- ◆ BLCC 84K
- ◆ 18/2/2022

A front pasture female. Sired by Braveheart, who has surpassed all our expectations, and mothered by a powerful Crosby daughter that has proven to be a great producer. Love the volume and phenotype she displays, and bred to the great 505C, her calf should be great.

Bred to R Plus 5015C on May 10. Exposed to Wheatland Affinity 8196F June 10 to July 10. Safe to AI date.

Lot 15 BLCC *Miss Finest* 91K

MRL RED WHISKEY 101B
PWK GIBSONS FINEST 6Y 52E
PWK MS PAULA 39W 6Y

KOP PONDEROSA 144Y
BLCC MISS PONDEROSA 113C
BLCC MISS ROCHFORD 220X

TNT BOOTLEGGER Z268
MRL MISS 677Y
SUNNY VALLEY WISE GUY 80W
PWK MS PAULA 122P 39W
CMS TRADEMARK 756T
KOP MS BENGIE 6P
LFE ROCHFORD 3013T
BLCC MISS 38R

EPDS	CE	BW	WW	YW	MILK	MCE	MWWT	PERF	BW	WW
6.6	4.8	85.1	126.3	30.3	6.1	72.9			92 lbs	710 lbs

- ◆ POLLED
- ◆ CA-PG1446854
- ◆ BLCC 91K
- ◆ 20/2/2022

A deep sided, soggy made female that is bred to be a producer. 91K comes from a powerful cow that has produced very well for us. These Gibsons Finest females are very easy keeping and low maintenance. Bred to Approval for an exciting calf this winter.

Bred to Black Gold Approval 71E on April 30. Exposed to Wheatland Affinity 8196F June 10 to July 10. Safe to AI date.



Lot 16 BLCC *Miss Finest* 92K

MRL RED WHISKEY 101B
PWK GIBSONS FINEST 6Y 52E
PWK MS PAULA 39W 6Y

WHEATLAND REVENUE 677D
BLCC MISS REVENUE 241G
KOP MS WALKER 137A

TNT BOOTLEGGER Z268
MRL MISS 677Y
SUNNY VALLEY WISE GUY 80W
PWK MS PAULA 122P 39W
PROFIT
WHEATLAND LADY 935W
TWIN-CHIEF WALKER 21W
KOP MS KODIAK 189U

EPDS	CE	BW	WW	YW	MILK	MCE	MWWT	PERF	BW	WW
5.9	4.4	83.9	123.1	29.3	4.4	71.3			94 lbs	685 lbs

- ◆ POLLED
- ◆ CA-PG1446855
- ◆ BLCC 92K
- ◆ 20/2/2022

Another Gibsons Finest daughter that looks to be a big capacity big production type of female that should get the job done every year. An Appeal calf from her should be very exciting.
ed to Black Gold Approval 71E on May 20. Exposed to Wheatland Affinity 8196F June 10 to July 10.

Lot 17 BLCC *Miss Finest* 108K

MRL RED WHISKEY 101B
PWK GIBSONS FINEST 6Y 52E
PWK MS PAULA 39W 6Y

KWA RED ROCK 5T
BLCC MISS RED ROCK 40Z
BLCC MISS STING 408X

TNT BOOTLEGGER Z268
MRL MISS 677Y
SUNNY VALLEY WISE GUY 80W
PWK MS PAULA 122P 39W
DAY RED PEPPER DOC 984R
KWA MS ROCK 7P
TNT STING M377
BLCC MISS DREAM ON 2T

EPDS	CE	BW	WW	YW	MILK	MCE	MWWT	PERF	BW	WW
10.1	3.5	84.7	125.3	29.4	9	71.8			86 lbs	670 lbs

- ◆ POLLED
- ◆ CA-PG1446856
- ◆ BLCC 108K
- ◆ 21/2/2022

108K is a full sister to a high seller a few years ago. Selling to Elk Meadows Ranch in Montana. She is a deep sided, big bodied female that comes from a model cow that can produce. Her calf by Affinity will be exceptional.
Bred to Wheatland Affinity 8196F on April 28. Exposed to Affinity June 10 to July 10. Safe to AI date.



Lot 18 BLCC *Miss Desire* 119K

BCLR AMBITION E301
WHEATLAND BULL 921G
WHEATLAND LADY 6554D

KWA RED ROCK 5T
BLCC MISS RED ROCK 120X
BLCC MISS 51N

CDI AMBITION 255C
BCLR MISS AUTHORITY A301
WHEATLAND CIRCUIT BREAKER
WHEATLAND LADY 4242B
DAY RED PEPPER DOC 984R
KWA MS ROCK 7P
RC STINGER 072K
JRTG MISS SWEETIE 3C

EPDS	CE	BW	WW	YW	MILK	MCE	MWWT	PERF	BW	WW
9.6	2.8	79	115.2	24.6	7.5	64.1			90 lbs	670 lbs

- ◆ POLLED
- ◆ CA-PG1446857
- ◆ BLCC 119K
- ◆ 23/2/2022

A dark red female that will prove to be an honest, hard-working cow that gets the job done every year. Length, width, volume and a great cow family behind her. No guesswork here. Bred to Approval.
Bred to Black Gold Approval 71E on May 13. Exposed to Wheatland Affinity 8196F June 10 to July 10. Safe to AI date



Lot **19** **BLCC** *Miss Liner* **124K**

SPRINGCREEK LINER 56U
JPCC MR LINER 75B
DRAKE TULA 1R

WTW BEST WESTERN 5X
KOP MS BEST WESTERN 22A
KOP MS TOUCHDOWN 145Y

RCC/TCF LINE DRIVE M181
NEVAS L93
TCF/RCC TEMPTATION GJ640
DCC 5N
NCB RED DREAM 23T
WTW RED 942J LASS 8061U
IPU RED TOUCHDOWN 32S
KOP MS NICOLE 60N

EPDS	CE	BW	WW	YW	MILK	MCE	MWWT	PERF	BW	WW
6.3	3.2	74.7	113.7	30.3	5	67.7			92 lbs	735 lbs

- ◆ POLLED
- ◆ CA-PG1446858
- ◆ BLCC 124K
- ◆ 24/2/2022

Lots of power in this great Liner daughter. You just have to admire the steer volume, shape and eye appeal that she displays. 22A has proven to be a great acquisition for us and has a tremendous production record. Should have a beautiful baby.

Bred To Black Gold Approval on May 20. Exposed to Wheatland Affinity 8196F June 10 to July 10.

Lot **20** **BLCC** *Miss Desire* **139K**

BCLR AMBITION E301
WHEATLAND BULL 921G
WHEATLAND LADY 6554D

R PLUS 110X
BLCC MISS SLEDGE 123D
BLCC MISS STING 301S

CDI AMBITION 255C
BCLR MISS AUTHORITY A301
WHEATLAND CIRCUIT BREAKER
WHEATLAND LADY 4242B
R PLUS REDGE 8018U
MISS R PLUS 006K
TNT STING M377
BLCC MISS 128N

EPDS	CE	BW	WW	YW	MILK	MCE	MWWT	PERF	BW	WW
9	3.1	78.5	109	26.8	7.2	66.1			90 lbs	680 lbs

- ◆ POLLED
- ◆ CA-PG1446859
- ◆ BLCC 139K
- ◆ 25/2/2022

A great, eye appealing, big volume female that you wish you had a herd of. 139K will prove to be a producer. The cow family has been very productive and her dam is a carbon copy of her. The mating to Sheriff should be interesting.

Bred to Kuntz Sheriff 8A on May 28. Exposed to Wheatland Affinity 8196 June 10 to July 10.



Lot 21 BLCC *Miss Desire* 142K

BCLR AMBITION E301
WHEATLAND BULL 921G
WHEATLAND LADY 6554D
KOP PONDEROSA 144Y
BLCC MISS PONDEROSA 72D
BLCC MISS ROCHFORD 68Z

CDI AMBITION 255C
BCLR MISS AUTHORITY A301
WHEATLAND CIRCUIT BREAKER
WHEATLAND LADY 4242B
CMS TRADEMARK 756T
KOP MS BENGIE 6P
LFE ROCHFORD 3013T
BLCC MISS RED 277T

EPDS	CE	BW	WW	YW	MILK	MCE	MWWT	PERF	BW	WW
	7.7	3.1	78	112.3	28.9	5.7	67.9		90 lbs	665 lbs

- ◆ POLLED
- ◆ CA-PG1446860
- ◆ BLCC 142K
- ◆ 25/2/2022

A dark red female from a great cow family. 142K is a descendant of the productive 277T cow family that has a long list of top progeny and high sellers. There is a longevity, productivity, and profitability bred into this female. Bred to Approval.

Bred to Black Gold Approval 71E on May 4. Exposed to Wheatland Affinity 8196F June 10 to July 10. Safe to AI date.

Lot 22 BLCC *Miss Braveheart* 146K

SVS CAPTAIN MORGAN 11Z
SKORS BRAVEHEART 289G
SKORS FANCY THAT 200A
KWA RED ROCK 5T
BLCC MISS RED ROCK 218F
KOP MS WALKER 137A

HARVIE JDF WALLBANGER 111X
SUNNYVALLEY BLK JENNA 88U
LBR CROCKET R81
SKORS MS DREAM ON 103T
DAY RED PEPPER DOC 984R
KWA MS ROCK 7P
TWIN-CHIEF WALKER 21W
KOP MS KODIAK 189U

EPDS	CE	BW	WW	YW	MILK	MCE	MWWT	PERF	BW	WW
	7.9	3.7	85.4	130.7	29.1	4.5	71.8		92 lbs	680 lbs

- ◆ POLLED
- ◆ CA-PG1446861
- ◆ BLCC 146K
- ◆ 26/2/2022

The dam and grandam of this heifer are among an elite group of cows that we value very highly. 146K is a big volume, eye appealing female that should be a phenomenal producer. Very little guess work here. Her Approval calf should be great.

Bred to Black Gold Approval 71E on May 7. Exposed to Wheatland Affinity 8196F June 10 to July 10. Safe to AI date.

Lot 23 BLCC *Miss Desire* 148K

BCLR AMBITION E301
WHEATLAND BULL 921G
WHEATLAND LADY 6554D
KWA RED ROCK 5T
BLCC MISS RED ROCK 38W
BLCC MISS GOODANUFF 16S

CDI AMBITION 255C
BCLR MISS AUTHORITY A301
WHEATLAND CIRCUIT BREAKER
WHEATLAND LADY 4242B
DAY RED PEPPER DOC 984R
KWA MS ROCK 7P
NLC GOOD A NUFF 33G
BLCC MISS 52P

EPDS	CE	BW	WW	YW	MILK	MCE	MWWT	PERF	BW	WW
	10.3	1.9	77.7	115.7	28.5	6.7	67.4		90 lbs	665 lbs

- ◆ POLLED
- ◆ CA-PG1446862
- ◆ BLCC 148K
- ◆ 26/2/2022

A powerful, big capacity female sired by our Ambition son that could have been the keeper pen. Her sire has certainly done a great job for us and have been very pleased with his daughters that calved last winter. She should have an exciting calf by the easy calving Affinity.

Bred to Wheatland Affinity 8196F on May 8. Exposed to Affinity June 10 to July 10, Safe to AI date.

Lot 24 BLCC *Miss Finest* 154K

MRL RED WHISKEY 101B
PWK GIBSONS FINEST 6Y 52E
PWK MS PAULA 39W 6Y
KOP CROSBY 137W
BLCC MISS CROSBY 114G
BLCC MISS SLEDGE 124C

TNT BOOTLEGGER Z268
MRL MISS 677Y
SUNNY VALLEY WISE GUY 80W
PWK MS PAULA 122P 39W
MUIRHEAD LIVE WIRE 95R
KOP MS BENGIE 6P
R PLUS 110X
BLCC MISS RED ROCK 38W

EPDS	CE	BW	WW	YW	MILK	MCE	MWWT	PERF	BW	WW
	6.2	5.1	87.3	128.8	32.3	7.5	75.9		92 lbs	680 lbs

- ◆ POLLED
- ◆ CA-PG1446864
- ◆ BLCC 154K
- ◆ 27/2/2022

A female with great potential and predictability behind her. The dam and grandam are still in production and both have great track records. 114G is a young cow that we have high expectations of. Her calf by Appeal will be profitable.

Bred to Black Gold Approval 71E on April 26. Exposed to Wheatland Affinity 8196F June 10 to July 10. Safe to AI date.

Lot 25 BLCC *Miss Braveheart* 156K

SVS CAPTAIN MORGAN 11Z
SKORS BRAVEHEART 289G
SKORS FANCY THAT 200A
KOP CROSBY 137W
BLCC MISS CROSBY 161E
BLCC MISS RED ROCK 40Z

HARVIE JDF WALLBANGER 111X
SUNNYVALLEY BLK JENNA 88U
LBR CROCKET R81
SKORS MS DREAM ON 103T
MUIRHEAD LIVE WIRE 95R
KOP MS BENGIE 6P
KWA RED ROCK 5T
BLCC MISS STING 408X

EPDS	CE	BW	WW	YW	MILK	MCE	MWWT	PERF	BW	WW
	6.9	4.4	85.3	127.2	27.3	5.6	70		92 lbs	670 lbs

- ◆ POLLED
- ◆ CA-PG1446866
- ◆ BLCC 156K
- ◆ 27/2/2022

An easy fleshing, big volume, deep sided Braveheart daughter that should be in the keeper pen. Tremendous eye appeal, powerful dam and an exciting future for this female.

Bred to Black Gold Approval 71E on May 4. Exposed to Wheatland Affinity 8196F June 10 to July 10. Safe to AI date.

Lot **26** BLCC *Miss Liner* 174K

SPRINGCREEK LINER 56U
JPCC MR LINER 75B
DRAKE TULA 1R
3D RED POWER 150Z
BLCC MISS RED POWER 170E
BLCC MISS STUBBY 214A

RCC/TCF LINE DRIVE M181
NEVAS L93
TCF/RCC TEMPTATION GJ640
DCC 5N
LFEBISS BLACKADVANCE 426U
CROSSROAD RAMONA 375R
LFE BS LEWIS 322U
BLCC MISS 180R

EPDS	CE	BW	WW	YW	MILK	MCE	MWWT	PERF	BW	WW
	5.7	4.4	84.5	128.1	31	2.7	73.3		90 lbs	675 lbs

- ◆ POLLED
- ◆ CA-PG1446867
- ◆ BLCC 174K
- ◆ 28/2/2022

Moderate, tremendous volume and eye appeal and a superior cow family back up this amazing female. 174K is a descendant of the great Whoopie D92 cow that has done so much for us. One that should be in the keeper pen for us, but can't keep them all!! This female should have a great future.

Bred to NGDB Structure 34D on June 1. Exposed to Wheatland Affinity 8196F June 10 to July 10.



Bonchuk Farms Female Sale

Lot **27** BLCC *Miss Braveheart* 176K

SVS CAPTAIN MORGAN 11Z
SKORS BRAVEHEART 289G
SKORS FANCY THAT 200A
DEEG VENOM 43C
MOES VA VA VOOM 91E
NUG MISS 90Z

HARVIE JDF WALLBANGER111X
SUNNYVALLEY BLK JENNA 88U
LBR CROCKET R81
SKORS MS DREAM ON 103T
NCB COBRA 47Y
DEEG MS 13Z
NUG QUINCEY 69W
NUG TRENA 32X

EPDS	CE	BW	WW	YW	MILK	MCE	MWWT	PERF	BW	WW
	7	3.7	80.9	118.5	24.7	3.1	65.2		90 lbs	705 lbs

- ◆ POLLED
- ◆ CA-PG1446869
- ◆ BLCC 176K
- ◆ 28/2/2022

An eye appealing female that makes you look twice. Sired by Braveheart and mothered by a great female that was purchased from the Swan Lake dispersal. 176K is bred to the easy calving Affinity, the resulting calf should be very marketable and profitable.

Bred to Wheatland Affinity 8196F on May 4. Exposed to Affinity June 10 to July 10.

Lot **28** BLCC *Miss Revenue* 187K

PROFIT
WHEATLAND REVENUE 677D
WHEATLAND LADY 935W
KOP PONDEROSA 144Y
BLCC MISS PONDEROSA 297D
BLCC MISS ROCHFORD 220X

WS PILGRIM H182U
WAGR PANARAMA 204Z
WHEATLAND BULL 680S
WHEATLAND LADY 727 T
CMS TRADEMARK 756T
KOP MS BENGIE 6P
LFE ROCHFORD 3013T
BLCC MISS 38R

EPDS	CE	BW	WW	YW	MILK	MCE	MWWT	PERF	BW	WW
	3.5	5.3	83.4	121	25.2	0.9	66.9		96 lbs	710 lbs

- ◆ POLLED
- ◆ CA-PG1446871
- ◆ BLCC 187K
- ◆ 1/3/2022

A powerhouse Revenue daughter that is loaded with volume, style, and eye appeal. She is good no matter which way you look at her. Her dam is a big volume, great tempered cow that produces. Bred to Approval.

Bred to Black Gold Approval 71E on May 1. Exposed 10 to July 10. Safe to AI date.



Lot **29** BLCC *Miss Liner* 193K

SPRINGCREEK LINER 56U
JPCC MR LINER 75B
DRAKE TULA 1R
AJB STINGRAY 63Y
AJB BLACK LADY RAY 4D
BLCC MISS FORCE 4X
RCC/TCF LINE DRIVE M181
NEVAS L93
TCF/RCC TEMPTATION GJ640
DCC 5N
WHEATLAND BULL 995W
AJB SPECKLED PEARL 63W
HOOKS SHEAR FORCE 38K
BLCC MISS 124R 353U

EPDS	CE	BW	WW	YW	MILK	MCE	MWWT	PERF	BW	WW
9.7	2	70.1	109.9	29.5	6.1	64.6			90 lbs	640 lbs

- ◆ POLLED
- ◆ CA-PG1446872
- ◆ BLCC 193K
- ◆ 1/3/2022

A non-dilutor daughter of Liner that will make a great producer and will raise calves that will be among your best every fall. Liner daughters are all so similar, sound, easy fleshing females with great udders that just flat out produce. Her 5015C calf should be great.

Bred to R Plus 5015C on May 7. Exposed to Wheatland Affinity 8196F June 10 to July 10. Safe to AI date.

Lot **30** BLCC *Miss Desire* 236K

BCLR AMBITION E301
WHEATLAND BULL 921G
WHEATLAND LADY 6554D
KWA RED ROCK 5T
BLCC MISS RED ROCK 225Y
BLCC MISS 92N
CDI AMBITION 255C
BCLR MISS AUTHORITY A301
WHEATLAND CIRCUIT BREAKER
WHEATLAND LADY 4242B
DAY RED PEPPER DOC 984R
KWA MS ROCK 7P
MSS JASPER 17J
BLCC HALENA 2H

EPDS	CE	BW	WW	YW	MILK	MCE	MWWT	PERF	BW	WW
9.4	2.5	75.3	110.7	30.3	6.7	68			94 lbs	622 lbs

- ◆ POLLED
- ◆ CA-PG1446873
- ◆ BLCC 236K
- ◆ 6/3/2022

A dark red female that will bring in a quality calf year after year. The dam is a huge ribbed female that is loaded with capacity and longevity. 236K is bred to Affinity for an exciting calf next spring.

Exposed to Wheatland Affinity 8196F observed June 10. Exposed to Affinity June 10 to July 10.



Lot **31** BLCC *Miss Finest* 247K

MRL RED WHISKEY 101B
PWK GIBSONS FINEST 6Y 52E
PWK MS PAULA 39W 6Y
KOP CROSBY 137W
BLCC MISS CROSBY 134E
BLCC MISS RED ROCK 352A
TNT BOOTLEGGER Z268
MRL MISS 677Y
SUNNY VALLEY WISE GUY 80W
PWK MS PAULA 122P 39W
MUIRHEAD LIVE WIRE 95R
KOP MS BENGIE 6P
KWA RED ROCK 5T
BLCC MISS RED 213U

EPDS	CE	BW	WW	YW	MILK	MCE	MWWT	PERF	BW	WW
7.2	4.7	85.2	125.4	33	8.1	75.6			94 lbs	665 lbs

- ◆ POLLED
- ◆ CA-PG1446874
- ◆ BLCC 247K
- ◆ 8/3/2022

Big volume eye appealing daughter of Gibsons Fines that will mature to be a great producer of quality offspring year after year. Long, full of volume, wide hipped and setting up a beautiful udder. Should be a great Approval calf.

Bred to Black Gold Approval 71E May 22. Exposed to Wheatland Affinity 8196F June 10 to July 10. Safe to AI date.



Lot **32** BLCC *Miss 5015C* 249K

WFL ABSOLUTE 51Y
R PLUS 5015C
IPU MS. 56U LINER 15A
SKORS BLACK CROCKET 234Z
BLCC MISS CROCKETT 242C
WINDMILL MS DYNAMITE 101W
LFE STRAIT UP 454W
WFL MS BLACK FLASH 8068U
SPRINGCREEK LINER 56U
RTC/JETS UPTOWN GIRL 15U
LBR CROCKET R81
SKORS MS CHOCOLATE 179S
BLCC MR DYNAMITE 2S
WINDMILL MS WHISLER 137R

EPDS	CE	BW	WW	YW	MILK	MCE	MWWT	PERF	BW	WW
4.8	4.4	88.8	136.9	21.9	-0.1	66.3			94 lbs	705 lbs

- ◆ POLLED
- ◆ CA-PG1446875
- ◆ BLCC 249K
- ◆ 8/3/2022

A non-dilutor daughter of the great 5015C, who has his own page in the Simmental history books of siring great male and female progeny in many herds, and mothered by a power house female that has been big on production for us. 242C is a big volume, excellent uddered

cow that should be in a transplant program, 249K is sure to follow in her dam's footsteps. She is bred to the great Structure, should be a great calf.

Bred to NGDB Structure 34D on May 8. Exposed to Wheatland Affinity 8196F June 10 to July 10. Safe to AI date.



Lot **33** BLCC *Miss Braveheart* 250K

SVS CAPTAIN MORGAN 11Z
SKORS BRAVEHEART 289G
SKORS FANCY THAT 200A
R PLUS 110X
BLCC MISS SLEDGE 124C
BLCC MISS RED ROCK 38W

HARVIE JDF WALLBANGER111X
SUNNYVALLEY BLK JENNA 88U
LBR CROCKET R81
SKORS MS DREAM ON 103T
R PLUS REDGE 8018U
MISS R PLUS 006K
KWA RED ROCK 5T
BLCC MISS GOODANUFF 16S

EPDS	CE	BW	WW	YW	MILK	MCE	MWWT	PERF	BW	WW
6.4	4.7	88.1	134.5	28	4.4	72.1	96 lbs	670 lbs		

- ◆ POLLED
- ◆ CA-PG1446877
- ◆ BLCC 250K
- ◆ 8/3/2022

A thick made Braveheart daughter that stands out and makes you take another look. Loaded with capacity, style, do-ability, and out of a great producer. Look for a great Affinity calf from her.

Bred to Wheatland Affinity 8196F on May 8. Exposed to Affinity June 10 to July 10. Safe to AI date.

Lot **34** BLCC *Miss Braveheart* 252K

SVS CAPTAIN MORGAN 11Z
SKORS BRAVEHEART 289G
SKORS FANCY THAT 200A
KWA RED ROCK 5T
BLCC MISS RED ROCK 281X
BLCC MISS LATASHA 87L

HARVIE JDF WALLBANGER111X
SUNNYVALLEY BLK JENNA 88U
LBR CROCKET R81
SKORS MS DREAM ON 103T
DAY RED PEPPER DOC 984R
KWA MS ROCK 7P
MSS JASPER 17J
BLCC MISS HILLARY 27H

EPDS	CE	BW	WW	YW	MILK	MCE	MWWT	PERF	BW	WW
6.8	4	80.5	122.9	31.3	3.8	71.6	94 lbs	680 lbs		

- ◆ POLLED
- ◆ CA-PG1446879
- ◆ BLCC 252K
- ◆ 8/3/2022

A very long bodied red baldy daughter of Braveheart that has eye appeal, performance and some serious cow power behind her 281X is a big volume, easy doing female that is excellent footed and has an udder like a 3-year-old, and is still producing fantastic for us. 252K has a lot going for her and is bred to the great 5015C. I'd be hoping for a bull calf.

Bred to R Plus 5015C on May 7. Exposed to Wheatland Affinity 8196F June 10 to July 10. Safe to AI date.

Lot **35** BLCC *Miss Revenue* 310K

PROFIT
WHEATLAND REVENUE 677D
WHEATLAND LADY 935W
KWA RED ROCK 5T
BLCC MISS RED ROCK 33Y
BLCC MISS TOP GUN 122W

WS PILGRIM H182U
WAGR PANARAMA 204Z
WHEATLAND BULL 680S
WHEATLAND LADY 727 T
DAY RED PEPPER DOC 984R
KWA MS ROCK 7P
TNT TOP GUN R244
BLCC MISS 61N

EPDS	CE	BW	WW	YW	MILK	MCE	MWWT	PERF	BW	WW
7.1	3.8	80.7	119.1	25.2	3.8	65.6	92 lbs	587 lbs		

- ◆ POLLED
- ◆ CA-PG1446881
- ◆ BLCC 310K
- ◆ 20/3/2022

A long-bodied Revenue daughter that should be big on production and raise some great progeny. 33Y is an excellent uddered cow that continues to produce exceptionally well. Look for a great Approval calf.

Bred to Black Gold Approval 71E on May 14. Exposed to Wheatland Affinity 8196F June 10 to July 10. Safe to AI date.

Lot 36 BLCC Miss 5015C 328K

WFL ABSOLUTE 51Y
R PLUS 5015C
IPU MS. 56U LINER 15A

ERIXON DEALER 63Z
BLCC MISS DEALER 263E
BLCC MISS POWERLINE 182W

LFE STRAIT UP 454W
WFL MS BLACK FLASH 8068U
SPRINGCREEK LINER 56U
RTC/JETS UPTOWN GIRL 15U
HARVIE JDF WALLBANGER111X
ERIXON LADY 35T
KENCO/MF POWERLINE 204L
TNT MISS AMERICANA E55

EPDS	CE	BW	WW	YW	MILK	MCE	MWWT	PERF	BW	WW
6.8	3.9	84.6	131.9	20.6	0.2	62.9			94 lbs	593 lbs

- ◆ POLLED
- ◆ CA-PG1446883
- ◆ BLCC 328K
- ◆ 24/3/2022

A non-dilutor daughter of 5015C that should be staying home. We are very high on this cow family, the grandam is a cow that will be entering our embryo program and has a super production record. 263E is a big volume cow that is excellent uddered, great feet and can produce. No questions here. Bred Approval

Bred to Black Gold Approval 71E on April 28. Exposed to Wheatland Affinity 8196F June 10 to July 10. Safe to AI date.

Lot 37 BLCC Miss Desire 333K

BCLR AMBITION E301
WHEATLAND BULL 921G
WHEATLAND LADY 6554D

KWA RED ROCK 5T
BLCC MISS RED ROCK 10G
BLCC MISS SHERIFF 33C

CDI AMBITION 255C
BCLR MISS AUTHORITY A301
WHEATLAND CIRCUIT BREAKER
WHEATLAND LADY 4242B
DAY RED PEPPER DOC 984R
KWA MS ROCK 7P
KUNTZ SHERIFF 8A
BLCC MISS PONDEROSA 380A

EPDS	CE	BW	WW	YW	MILK	MCE	MWWT	PERF	BW	WW
12.7	0	72	105.6	31	8.2	67			90 lbs	590 lbs

- ◆ POLLED
- ◆ CA-PG1446885
- ◆ BLCC 333K
- ◆ 26/3/2022

An eye appealing daughter of our Ambition son that boasts volume, rib shape and generations of great udders. Her Affinity calf should be fantastic.

Bred to Wheatland Affinity 8196F on April 25. Exposed to Affinity June 10 to July 10. Safe to AI date.

Lot 38 BLCC Miss Finest 341K

MRL RED WHISKEY 101B
PWK GIBSONS FINEST 6Y 52E
PWK MS PAULA 39W 6Y

KWA RED ROCK 5T
BLCC MISS RED ROCK 346D
DCSF MS RED ZEPHYR 28Z

TNT BOOTLEGGER Z268
MRL MISS 677Y
SUNNY VALLEY WISE GUY 80W
PWK MS PAULA 122P 39W
DAY RED PEPPER DOC 984R
KWA MS ROCK 7P
IPU ACCELERATOR 12W
DCSF RED LADY SASSIE 12S

EPDS	CE	BW	WW	YW	MILK	MCE	MWWT	PERF	BW	WW
8.8	3.5	78.5	116.2	29.4	9	68.7			90 lbs	560 lbs

- ◆ POLLED
- ◆ CA-PG1446887
- ◆ BLCC 341K
- ◆ 30/3/2022

A Gibsons Finest daughter that is a reflection of her mother and should produce like her as well. 34K has some capacity, eye appeal and is setting up a beautiful udder. Her Approval calf will be excellent.

Bred to Black Gold Approval 71E on May 6. Exposed to Wheatland Affinity 8196F June 10 to July 10. Safe to AI date.

Lot 39 BLCC Miss Finest 342K

MRL RED WHISKEY 101B
PWK GIBSONS FINEST 6Y 52E
PWK MS PAULA 39W 6Y

SKORS BLACK CROCKET 234Z
BLCC MISS BCROCKETT 234B
SUN RISE BLACK 96R

TNT BOOTLEGGER Z268
MRL MISS 677Y
SUNNY VALLEY WISE GUY 80W
PWK MS PAULA 122P 39W
LBR CROCKET R81
SKORS MS CHOCOLATE 179S
RCC/TCF LINE DRIVE M181
SUN RISE RED 5M

EPDS	CE	BW	WW	YW	MILK	MCE	MWWT	PERF	BW	WW
6.3	4.3	84.8	128.8	30.1	4.4	72.5			94 lbs	560 lbs

- ◆ HORNED
- ◆ CA-G1446889
- ◆ BLCC 342K
- ◆ 31/3/2022

The Gibsons Finest daughters are making wonderful brood cows and this heifer will be the same; style, eye appeal depth of body and great udder quality are all common with his daughters. 234B is an honest, hardworking, great uddered female, the Red Rock calf that this heifer is carrying will be great.

Bred to KWA Red Rock 5T on May 5. Exposed to Wheatland Affinity 8196F June 10 to July 10. Safe to AI date.

Lot 40 BLCC Miss Finest 352K

MRL RED WHISKEY 101B
PWK GIBSONS FINEST 6Y 52E
PWK MS PAULA 39W 6Y

KOP CROSBY 137W
BLCC MISS CROSBY 285E
KOP MS TOUCHDOWN 170U

TNT BOOTLEGGER Z268
MRL MISS 677Y
SUNNY VALLEY WISE GUY 80W
PWK MS PAULA 122P 39W
MUIRHEAD LIVE WIRE 95R
KOP MS BENGIE 6P
IPU RED TOUCHDOWN 32S
KOP MS FREIGHTLINER 119S

EPDS	CE	BW	WW	YW	MILK	MCE	MWWT	PERF	BW	WW
5.9	4.1	79.3	112.5	32.2	6.7	71.9			92 lbs	540 lbs

- ◆ POLLED
- ◆ CA-PG1446891
- ◆ BLCC 352K
- ◆ 1/4/2022

An eye appealing female that should be a producer. The grandam was a hardworking, very profitable purchase for us and left us with some great progeny. Her service to the easy calving Affinity will produce excellent results.

Bred to Wheatland Affinity June 1. Exposed to Wheatland Affinity 8196F June 10 to July 10.

Lot 41 BLCC Miss Desire 353K

BCLR AMBITION E301
WHEATLAND BULL 921G
WHEATLAND LADY 6554D

KWA RED ROCK 5T
BLCC MISS RED ROCK 279E
BLCC MISS ACE 100X

CDI AMBITION 255C
BCLR MISS AUTHORITY A301
WHEATLAND CIRCUIT BREAKER
WHEATLAND LADY 4242B
DAY RED PEPPER DOC 984R
KWA MS ROCK 7P
WHEATLAND RED ACE 747T
BLCC MISS LABEL 29U

EPDS	CE	BW	WW	YW	MILK	MCE	MWWT	PERF	BW	WW
11.8	1.1	74.2	106.5	27.2	7.5	64.3			88 lbs	550 lbs

- ◆ POLLED
- ◆ CA-PG1446893
- ◆ BLCC 353K
- ◆ 2/4/2022

A long-bodied female that has some predictability and excellent maternal bred into her. The grandam was just retired last year, and had a tremendous production record for us. 353K should be as productive.

Bred to Black Gold Approval 71E on May 24. Exposed to Wheatland Affinity 8196F June 10 to July 10.

Lot **42** ADBS *Miss Revenue* 359K

PROFIT
WHEATLAND REVENUE 677D
WHEATLAND LADY 935W

LFE BLACK RIDGELINE 536W
ADBS MISS RIDGELINE 109A
ADBS MISS UNDERTAKER 102U

WS PILGRIM H182U
WAGR PANARAMA 204Z
WHEATLAND BULL 680S
WHEATLAND LADY 727 T
LFE MR LEWIS 462P
LFE RS FIRSTBASE 29S
TNT STING M377
ADBS MISS SANDY 105S

EPDS	CE	BW	WW	YW	MILK	MCE	MWWT	PERF	BW	WW
	4.5	3.9	75	106.1	23.7	-0.1	61.2	PERF	96 lbs	588 lbs

- ◆ POLLED
- ◆ CA-PG1446896
- ◆ ADBS 359K
- ◆ 3/4/2022

A dark red Revenue daughter that should be a great producer like her dam. 359K is long bodied, has great volume and looks like she will have an excellent udder. Bred to Affinity. **Bred to Wheatland Affinity 8196F on May 26. Exposed to Wheatland Affinity 8196F June 10 to July 10.**

Lot **43** BLCC *Miss Desire* 362K

BCLR AMBITION E301
WHEATLAND BULL 921G
WHEATLAND LADY 6554D

MRL CAPONE 130B
TWIN BRAE GOLDIE 944G
TWIN BRAE DAINTY 644D

CDI AMBITION 255C
BCLR MISS AUTHORITY A301
WHEATLAND CIRCUIT BREAKER
WHEATLAND LADY 4242B
TNT BOOTLEGGER Z268
MRL MISS 836W
REMINGTON RED LABEL HR
TWIN BRAE BLACK DYNA 944B

EPDS	CE	BW	WW	YW	MILK	MCE	MWWT	PERF	BW	WW
	8.6	2.8	78.4	111.6	26.9	4.3	66.1	PERF	88 lbs	548 lbs

- ◆ POLLED
- ◆ CA-PG1446899
- ◆ BLCC 362K
- ◆ 5/4/2022

Lots of depth, rib shape and eye appeal, 362K should make a hard-working cow and look good while doing it. Her dam has proven to be a hardworking female that we like the looks of. Bred to the easy calving Affinity. **Bred to Wheatland Affinity 8196F May 10. Exposed to Wheatland Affinity 8196F June 10 to July 10.**



Lot **44** BLCC *Miss Finest* 368K

MRL RED WHISKEY 101B
PWK GIBSONS FINEST 6Y 52E
PWK MS PAULA 39W 6Y

R PLUS 110X
BLCC MISS SLEDGE 4G
BLCC MISS CROSBY 268E

TNT BOOTLEGGER Z268
MRL MISS 677Y
SUNNY VALLEY WISE GUY 80W
PWK MS PAULA 122P 39W
R PLUS REDGE 8018U
MISS R PLUS 006K
KOP CROSBY 137W
BLCC MISS 29R

EPDS	CE	BW	WW	YW	MILK	MCE	MWWT	PERF	BW	WW
	6.3	5.2	84.2	121.7	34.1	7.8	76.2	PERF	90 lbs	543 lbs

- ◆ POLLED
- ◆ CA-PG1446905
- ◆ BLCC 368K
- ◆ 12/4/2022

A Gibsons Finest daughter that is moderate framed and will make an honest contribution year after year. These Gibsons Finest females make great cows. Bred to the great Red Rock. **Bred to KWA Red Rock 5T on May 30. Exposed to Wheatland Affinity 8196F June 10 to July 10. Safe to AI date. Exposed to Wheatland Affinity 8196F June 10 to July 10.**

Lot **45** BLCC *Miss Commander* 369K

CDI AUTHORITY 77X
KWA AUTHORITY 46G
KWA MS ROCK 138Z

KOP PONDEROSA 144Y
BLCC MISS PONDEROSA 76B
BLCC MISS TEDDY 26X

NF TRUMP S582
CDI MS CROCKET 88T
KWA RED ROCK 5T
TLSR SASHA
CMS TRADMARK 756T
KOP MS BENGIE 6P
WHEATLAND RED TEDDY 457P
BLCC MISS 124R 183U

EPDS	CE	BW	WW	YW	MILK	MCE	MWWT	PERF	BW	WW
47	52	841	1283	298	16	719	PERF	94 lbs	525 lbs	

- ◆ POLLED
- ◆ CA-PG1446906
- ◆ BLCC 369K
- ◆ 14/4/2022

Lots of productivity in the background of this female. The dam and grandam has produced very well and this female should do the same. Bred to the easy calving Affinity. **Bred to Wheatland Affinity 8196F on May 26. Exposed to Wheatland Affinity 8196F June 10 to July 10.**

BLACKS



ADBS 11K

Lot **46** BLCC *Miss Monument* 6K

WS EPIC E152
WHEATLAND MONUMENT 28H \ HP-HOP
WHEATLAND LADY 7002E \ HP-HOP
ERIXON DEALER 63Z
BLCC MISS DEALER 174H
BLCC MISS PORSCHE 1Z

WS ALL ABOARD B80
WS MAJESTIC Z133
WHEATLAND BULL 298Z
WHEATLAND LADY 568C
HARVIE JDF WALLBANGER111X
ERIXON LADY 35T
VIRGINIA'S PORSCHE 64P
BLCC MISS 128R

EPDS	CE	BW	WW	YW	MILK	MCE	MWWT	PERF	BW	WW
7.7	2.8	86.5	132.1	25.3	1.8	68.6			86 lbs	670 lbs

- ◆ POLLED
- ◆ BPG1449364
- ◆ BLCC 6K
- ◆ 25/1/2022

We have been very pleased with the Monument progeny. They start to really grow on you. 6K is an eye appealing, big volume female that comes from a super young female and is bred to calve to 5015C. Should be a great calf.

Bred to R PLUS 5015C on May 16. Exposed to Wheatland Affinity 8196F June 10 to July 10. Safe to AI date.

Lot **47** ADBS *Miss Hannibal* 11K

REMINGTON LOCK N LOAD 54U
SRH HANNIBAL 5H
SRH PRECIOUS 73A
ERIXON DEALER 63Z
ADBS MISS DEALER 219H
ADBS MISS WALLBANGER 84E

REMINGTON ON TARGET 2S
BAR 15 MISS KNIGHT78E-51G
WHEATLAND BULL 786T
OBCC CHYNA C49U
HARVIE JDF WALLBANGER111X
ERIXON LADY 35T
SPRINGCREEKWALLBANGER 11Z
ADBS MISS RIDGELINE 110A

EPDS	CE	BW	WW	YW	MILK	MCE	MWWT	PERF	BW	WW
12.4	1.5	82.4	127.7	22.9	4.9	64.1			86 lbs	710 lbs

- ◆ POLLED
- ◆ CA-BPG1446909
- ◆ ADBS 11K
- ◆ 28/1/2022

Lots of depth, capacity volume, eye appeal and cow power behind this baldy. 11K is a great tempered, easy doing female that was hard to let go. We have been impressed with the Hannibal progeny and look forward to seeing his daughters calve. 11K is bred to the great 5015C, should be a great calf.

Bred to R PLUS 5015C on April 30. Exposed to Wheatland Affinity 8196F June 10 to July 10. Safe to AI date.

Lot **48** BLCC *Miss Monument* 19K

WS EPIC E152
WHEATLAND MONUMENT 28H
WHEATLAND LADY 7002E

WHEATLAND REVENUE 677D
BLCC MISS REVENUE 30H
BLCC MISS DEALER 298D

WS ALL ABOARD B80
WS MAJESTIC Z133
WHEATLAND BULL 298Z
WHEATLAND LADY 568C
PROFIT
WHEATLAND LADY 935W
ERIXON DEALER 63Z
BLCC MISS TOP CHOICE 94S

EPDS	CE	BW	WW	YW	MILK	MCE	MWWT	PERF	BW	WW
	7.9	2.5	87.3	132.3	24.7	2.4	68.4		84 lbs	728 lbs

- ◆ POLLED
- ◆ CA-BPG1446910
- ◆ BLCC 19K
- ◆ 1/2/2022

Another Monument daughter that could have easily stayed home. Lots of style, capacity, volume, and comes from a tremendous cow family, 298D is a model female that we always try to have in the front pasture, 19K will turn out the same. The 5015C calf she is carrying should be a great one.

Bred to R PLUS 5015C on May 8. Exposed to Wheatland Affinity 8196F June 10 to July 10. Safe to AI date.



Bonchuk Farms Female Sale

Lot **49** BLCC *Miss Hannibal* 22K

REMINGTON LOCK N LOAD 54U
SRH HANNIBAL 5H
SRH PRECIOUS 73A

R PLUS 5015C
BLCC MISS 5015C 136H
BLCC MISS RED ROCK 218F

REMINGTON ON TARGET 2S
BAR 15 MISS KNIGHT78E-51G
WHEATLAND BULL 786T
OBCC CHYNA C49U
WFL ABSOLUTE 51Y
IPU MS. 56U LINER 15A
KWA RED ROCK 5T
KOP MS WALKER 137A

EPDS	CE	BW	WW	YW	MILK	MCE	MWWT	PERF	BW	WW
	14.1	0.1	83.1	130.5	22.8	6	64.4		90 lbs	730 lbs

- ◆ POLLED
- ◆ CA-BPG1446911
- ◆ BLCC 22K
- ◆ 2/2/2022

A beautiful Hannibal daughter that could have been in our keeper pen, but we wanted to bring our best. 22K has been a standout from a young age, great performance, excellent production cow family, and generations of superior udders. Bred to the easy calving Night Watch.

Bred to WC Night Watch 84E on May 6. Exposed to Wheatland Affinity 8196F June 10 to July 10. Safe to AI date.



Lot **50** BLCC *Miss Monument* 27K

WS EPIC E152
WHEATLAND MONUMENT 28H
WHEATLAND LADY 7002E

WHEATLAND REVENUE 677D
BLCC MISS REVENUE 90H
BLCC MISS DEALER 200D

WS ALL ABOARD B80
WS MAJESTIC Z133
WHEATLAND BULL 298Z
WHEATLAND LADY 568C
PROFIT
WHEATLAND LADY 935W
ERIXON DEALER 63Z
BLCC MISS POWERLINE 182W

EPDS	CE	BW	WW	YW	MILK	MCE	MWWT	PERF	BW	WW
	7.4	2.9	87.3	133.1	24.8	2.2	68.5		92 lbs	730 lbs

- ◆ HORNED
- ◆ CA-BG1446912
- ◆ BLCC 27K
- ◆ 3/2/2022

A big volume Monument daughter that comes from our E55 cow family that we are so high on. 27K has loads of shape, eye appeal, and generations of great production. She is bred to Stepping Stone, should be an interesting calf.

Bred to WS Stepping Stone B44 on May 30. Exposed to Wheatland Affinity 8196F June 10 to July 10. Safe to AI date.





Lot **51** BLCC *Miss 5015C* 34K

WFL ABSOLUTE 51Y
R PLUS 5015C
IPU MS. 56U LINER 15A

KWA RED ROCK 5T
BLCC MISS RED ROCK 51B
BLCC MISS 180R

LFE STRAIT UP 454W
WFL MS BLACK FLASH 8068U
SPRINGCREEK LINER 56U
RTC/JETS UPTOWN GIRL 15U
DAY RED PEPPER DOC 984R
KWA MS ROCK 7P
KENCO/MF POWERLINE 204L
TNT MISS WHOOPIE D92

EPDS	CE	BW	WW	YW	MILK	MCE	MWWT	PERF	BW	WW
8.8	2.6	79.1	126.1	22	2	61.6			90 lbs	740 lbs

- ◆ POLLED
- ◆ CA-BPG1446913
- ◆ BLCC 34K
- ◆ 7/2/2022

A great female. One that you could certainly build a program around. Sired by the great 5015C, and mothered by a beautiful big volumed, excellent uddered Red Rock daughter in 51B, who is a descendent of our Whoopie D92 cow family. The paper reads great, 34K has as much potential to be a front pasture female as any we have raised. Her Night Watch calf should be outstanding.

Bred to WC Night Watch 84E on May 3. Exposed to Wheatland Affinity 8196F June 10 to July 10. Safe to AI date.

Lot **52** BLCC *Miss Legacy* 36K

R PLUS 5015C
BLCC MR 5015C 65H
BLCC MISS DEALER 87C

ERIXON DEALER 63Z
BLCC MISS DEALER 285F
BLCC MISS PONDEROSA 113C

WFL ABSOLUTE 51Y
IPU MS. 56U LINER 15A
ERIXON DEALER 63Z
BLCC MISS RED 284T
HARVIE JDF WALLBANGER111X
ERIXON LADY 35T
KOP PONDEROSA 144Y
BLCC MISS ROCHFORD 220X

EPDS	CE	BW	WW	YW	MILK	MCE	MWWT	PERF	BW	WW
7.6	4	88.7	134.9	23.1	2.2	67.5			96 lbs	710 lbs

- ◆ POLLED
- ◆ CA-BPG1446914
- ◆ BLCC 36K
- ◆ 8/2/2022

A powerful, deep ribbed female, 36K is among the first calf crop from the 5015C son we raised and kept for our own use. We have been very pleased with his progeny so far. He sires dimension, capacity and predictability. 285F is a hard-working female that milks well and continues to produce.

Bred to KWA Red Rock 5T on May 30. Exposed to Wheatland Affinity 8196F June 10 to July 10.



Lot 53 BLCC Miss 5015C 37K

WFL ABSOLUTE 51Y
R PLUS 5015C
IPU MS. 56U LINER 15A

WHEATLAND REVENUE 677D
BLCC MISS REVENUE 252H
BLCC MISS LINER 68E

LFE STRAIT UP 454W
WFL MS BLACK FLASH 8068U
SPRINGCREEK LINER 56U
RTC/JETS UPTOWN GIRL 15U
PROFIT
WHEATLAND LADY 935W
JPCC MR LINER 75B
KOP MS WALKER 137A

EPDS	CE	BW	WW	YW	MILK	MCE	MWWT	PERF	BW	WW
6.6	3	85.4	131.9	21	-0.1	63.7			90 lbs	686 lbs

- ◆ POLLED
- ◆ CA-BPG1446915
- ◆ BLCC 37K
- ◆ 9/2/2022

A beautiful daughter of 5015C that could be a front pasture female. We are very high on this cow family. The grandam is a powerful female that has raised some amazing progeny, and we expect the same of 252H. Bred to the exciting calving ease bull, Slider.

Bred to KWA Slider 196H on May 9. Exposed to Wheatland Affinity 8196F June 10 to July 10. Safe to AI date.



53

Lot 54 BLCC Miss Edge 45K

S A V CUTTING EDGE 4857
MICH WHEATLAND BULL 7147E
COPPER CRK LADY 1210

KBR BLACK BULL 219Z
BLCC MISS KBR 153B
SIMMENTAL/SIMMENTAL

S A V HARVESTOR 0338
S A V BLACKCAP MAY 5530
EXAR LUTTON 1831
CHERRY KNOLL LADY LOLA
WHEATLAND PREDATOR 922W
KBR MISS KEELY 928W

EPDS	CE	BW	WW	YW	MILK	MCE	MWWT	PERF	BW	WW
9.7	2	64.2	95.9	18.1	5.5	50.2			90 lbs	662 lbs

- ◆ POLLED
- ◆ UNR1446916
- ◆ BLCC 45K
- ◆ 10/2/2022

This attractive half-blood will sell without papers. We have been very pleased with the job that Edge has done for us. These half bloods all have that added volume, eye appeal and are great fronted cattle that have been popular. Bred to 5015C for an exciting baby.

Bred to R PLUS 5015C on May 11. Exposed to Wheatland Affinity 8196F June 10 to July 10. Safe to AI date.

Lot 55 BLCC Miss Legacy 46K

R PLUS 5015C
BLCC MR 5015C 65H
BLCC MISS DEALER 87C

JPCC MR LINER 75B
BLCC MISS LINER 68E
KOP MS WALKER 137A

WFL ABSOLUTE 51Y
IPU MS. 56U LINER 15A
ERIXON DEALER 63Z
BLCC MISS RED 284T
SPRINGCREEK LINER 56U
DRAKE TULA 1R
TWIN-CHIEF WALKER 21W
KOP MS KODIAK 189U

EPDS	CE	BW	WW	YW	MILK	MCE	MWWT	PERF	BW	WW
6.9	3.6	86.7	132.6	26	1.8	69.4			92 lbs	745 lbs

- ◆ POLLED
- ◆ CA-BPG1446918
- ◆ BLCC 46K
- ◆ 10/2/2022

An exciting female that we really hate to see leave the farm. 46K is a long bodied, big volume female with that extra substance and eye appeal contained with a very productive dam and grandam. We really believe in cow families, and 46K comes from one of our best. She will have an exciting calf by Monument.

Bred to Wheatland Monument 28H on May 6. Exposed to Wheatland Affinity 8196F June 10 to July 10. Safe to AI date.



55

Lot **56** BLCC *Miss Edge* 47K

S A V CUTTING EDGE 4857
MICH WHEATLAND BULL 7147E
COPPER CRK LADY 1210

SKORS BLACK CROCKET 234Z
BLCC MISS BCROCKETT 173B
BLCC MISS ROCK 365X

S A V HARVESTOR 0338
S A V BLACKCAP MAY 5530
EXAR LUTTON 1831
CHERRY KNOLL LADY LOLA
LBR CROCKET R81
SKORS MS CHOCOLATE 179S
KWA RED ROCK 5T
BLCC MISS STING 373U

EPDS	CE	BW	WW	YW	MILK	MCE	MWWT	PERF	BW	WW
8.2	2.4	70.7	110.8	23	6	58.4			92 lbs	680 lbs

- ◆ POLLED
- ◆ CA-BPRS1446917
- ◆ BLCC 47K
- ◆ 10/2/2022

An easy doing half blood that comes from a great cow family. 47K is full of volume, is setting up an excellent looking udder, and is bred to the great 5015C.

Bred to R PLUS 5015C on May 6. Exposed to Wheatland Affinity 8196F June 10 to July 10. Safe to AI date.

Lot **57** BLCC *Miss 5015C* 65K

WFL ABSOLUTE 51Y
R PLUS 5015C
IPU MS. 56U LINER 15A

LFE ROCHFORD 3013T
BLCC MISS ROCHFORD 68Z
BLCC MISS RED 277T

LFE STRAIT UP 454W
WFL MS BLACK FLASH 8068U
SPRINGCREEK LINER 56U
RTC/JETS UPTOWN GIRL 15U
LFE MR LEWIS 514N
LFE CALYNA 31M
LAZY S BLACK 823P
BLCC MISS STINGER 191M

EPDS	CE	BW	WW	YW	MILK	MCE	MWWT	PERF	BW	WW
7.9	3.1	82.3	128.3	18.9	2.5	60.1			92 lbs	715 lbs

- ◆ POLLED
- ◆ CA-BPG1446920
- ◆ BLCC 65K
- ◆ 14/2/2022

Long bodied 5015C daughter that will be in herd builder. 65K comes from the 277T cow family that we had so much success with. Volume, capacity, great udder coming in and tremendous eye appeal. Bred to Night Watch.

Bred to WC Night Watch 84E on April 25. Exposed to Wheatland Affinity 8196F June 10 to July 10. Safe to AI date.



Lot **58** BLCC *Miss Monument* 88K

WS EPIC E152
WHEATLAND MONUMENT 28H
WHEATLAND LADY 7002E

KOP CROSBY 137W
BLCC MISS CROSBY 11G
BLCC MISS BCROCKETT 64D

WS ALL ABOARD B80
WS MAJESTIC Z133
WHEATLAND BULL 298Z
WHEATLAND LADY 568C
MUIRHEAD LIVE WIRE 95R
KOP MS BENGIE 6P
SKORS BLACK CROCKET 234Z
BLCC MISS BLACK TEDDY153W

EPDS	CE	BW	WW	YW	MILK	MCE	MWWT	PERF	BW	WW
6.9	3.1	86.7	132	28	4.8	71.4			88 lbs	680 lbs

- ◆ POLLED
- ◆ CA-BPG1446922
- ◆ BLCC 88K
- ◆ 18/2/2022

An eye appealing Monument daughter that should be extremely productive and raise some great progeny in her lifetime. 88K has a lot of length, capacity and predictability as her cow family just keep on producing quality progeny year after year. Bred to the great 5015C.

Bred to R PLUS 5015C on April 30. Exposed to Wheatland Affinity 8196F June 10 to July 10. Safe to AI date.

Lot **59** BLCC *Miss Commander* 123K

CDI AUTHORITY 77X
KWA AUTHORITY 46G
KWA MS ROCK 138Z

KWA AUTHORITY 171E
TWIN BRAE GINA 4G
TWIN BRAE MS EZY 44E

NF TRUMP S582
CDI MS CROCKET 88T
KWA RED ROCK 5T
TLRS SASHA
CDI AUTHORITY 77X
KWA MS CROCKETT 87U
KOP ZODIAK 92Z
TWIN BRAE MS SHEAR BLACK

EPDS	CE	BW	WW	YW	MILK	MCE	MWWT	PERF	BW	WW
5.4	5.1	88.2	139.9	29.4	0.8	73.5			90 lbs	680 lbs

- ◆ POLLED
- ◆ CA-BPG1446923
- ◆ BLCC 123K
- ◆ 24/2/2022

A hetero black daughter of our Authority son that is very easy to look at, with her eye appeal, volume, and phenotype. The dam is a super young female that we are really liking the looks of. Sells bred to Night watch.

Bred to WC Night Watch 84E on May 2. Exposed to Wheatland Affinity 8196F June 10 to July 10. Safe to AI date.

Lot **60** ADBS *Miss 5015C* 132K

WFL ABSOLUTE 51Y
R PLUS 5015C
IPU MS. 56U LINER 15A

KWA RED ROCK 5T
ADBS MISS RED ROCK 79Z
ADBS MISS STING 353X

LFE STRAIT UP 454W
WFL MS BLACK FLASH 8068U
SPRINGCREEK LINER 56U
RTC/JETS UPTOWN GIRL 15U
DAY RED PEPPER DOC 984R
KWA MS ROCK 7P
TNT STING M377
ADBS MISS ROXY 251R

EPDS	CE	BW	WW	YW	MILK	MCE	MWWT	PERF	BW	WW
	9.5	2.5	84.3	131	24.2	3.2	66.4		90 lbs	670 lbs

- ◆ POLLED
- ◆ CA-BPG1446924
- ◆ ADBS 132K
- ◆ 25/2/2022

A moderate framed daughter of 5015C that is typical of his progeny. Lots of eye appeal generations of great udders and longevity add to her volume. The dam is a model female that can produce with the best of them. This hetero black heifer is bred to the exciting calving ease bull, Slider.

Bred to KWA Slider 196H on April 28. Exposed to Wheatland Affinity 8196F June 10 to July 10. Safe to AI date.

Lot **61** BLCC *Miss Revenue* 149K

PROFIT
WHEATLAND REVENUE 677D
WHEATLAND LADY 935W

LFE BS LEWIS 322U
BLCC MISS STUBBY 124A
BLCC MISS YUKON 193N

WS PILGRIM H182U
WAGR PANARAMA 204Z
WHEATLAND BULL 680S
WHEATLAND LADY 727 T
R PLUS BLACKEDGE
LFE BS MS ARNOLD 135S
IPU 365C BLACK YUKON 77L
SIMMENTAL/SIMMENTAL

EPDS	CE	BW	WW	YW	MILK	MCE	MWWT	PERF	BW	WW
	5.7	3.7	677	96	20.5	-0.6	54.4		92 lbs	670 lbs

- ◆ POLLED
- ◆ CA-BPG1446925
- ◆ BLCC 149K
- ◆ 26/2/2022

A long bodied Revenue daughter that will raise the bar every year raising great progeny and maintaining herself. The dam is a productive female that continues to produce. Bred to the easy calving Affinity.

Bred to Wheatland Affinity 8196F May 20. Exposed to Wheatland Affinity 8196F June 10 to July 10. Observed June 11.



Lot **62** BLCC *Miss Legacy* 158K

R PLUS 5015C
BLCC MR 5015C 65H
BLCC MISS DEALER 87C

SWAN LAKE CALEB 3 C
TWIN BRAE GINNY 3G
TWIN BRAE YOLANDA 43Y

WFL ABSOLUTE 51Y
IPU MS. 56U LINER 15A
ERIXON DEALER 63Z
BLCC MISS RED 284T
KWA FLYF RED MOUNTAIN 16Z
SWAN LAKE BECKY 39A
DANA WHEAT KING 46U
TWIN BRAE ULSA 843U

EPDS	CE	BW	WW	YW	MILK	MCE	MWWT	PERF	BW	WW
	10.1	2.7	79.9	123.7	28.8	5.9	68.8		90 lbs	655 lbs

- ◆ POLLED
- ◆ CA-BPG1446926
- ◆ BLCC 158K
- ◆ 27/2/2022

An attractive, big volume, eye appealing daughter off the 5015C son we retained that should be a powerful producer. The dam is proving to be a great purchase and has been consistent. Bred to the new, exciting calving ease bull Slider.

Bred to KWA Slider 196H on May 4. Exposed to Wheatland Affinity 8196F June 10 to July 10. Safe to AI date.



Lot **63****BLCC 165K**

◆ BLCC 165K

◆ UNREGISTERED

Another attractive will made half-blood female, that will sell unregistered. 165K has tremendous capacity and volume, eye appeal, and comes from a hard-working momma. Bred to 5015C for an exciting calf.

Bred to R PLUS 5015C on April 24. Exposed to Wheatland Affinity 8196F June 10 to July 10. Safe to AI date.

Lot **64****BLCC***Miss Legacy* **171K**

R PLUS 5015C
BLCC MR 5015C 65H
BLCC MISS DEALER 87C

BLCC MR BROKER 19B
BLCC MISS BROKER 311E
MJH ZENYATTA

WFL ABSOLUTE 51Y
IPU MS. 56U LINER 15A
ERIXON DEALER 63Z
BLCC MISS RED 284T
MR HOC BROKER
BLCC MISS DOMINANCE 89Z
WHEATLAND BULL 680S
TRI-R MS X-ELLE 8X

EPDS	CE	BW	WW	YW	MILK	MCE	MWWT	PERF	BW	WW
6.8	3.7	82.3	123.7	23.5	-0.9	64.7			92 lbs	675 lbs

◆ POLLED

◆ BLCC 171K

◆ CA-BPG1446928

◆ 27/2/2022

A powerful daughter of the 5015C son that will make you look twice. 171K is extremely long bodied, wide hiped and loaded with eye appeal. 311E is a powerful female that is producing fantastic for us. The service to Slider is exciting.

Bred to KWA Slider 196H on May 2. Exposed to Wheatland Affinity 8196F June 10 to July 10. Safe to AI date.

Lot **65****BLCC***Miss 5015C* **183K**

WFL ABSOLUTE 51Y
R PLUS 5015C
IPU MS. 56U LINER 15A

MAPLE LAKE 6666
BLCC MISS SWAGGER 46G
BLCC MISS RED ROCK 51B

LFE STRAIT UP 454W
WFL MS BLACK FLASH 8068U
SPRINGCREEK LINER 56U
RTC/JETS UPTOWN GIRL 15U
WHEATLAND SWAGGER 343A
MAPLE LAKE 3266
KWA RED ROCK 5T
BLCC MISS 180R

EPDS	CE	BW	WW	YW	MILK	MCE	MWWT	PERF	BW	WW
9	2.8	81.9	128.9	19	2	60			88 lbs	640 lbs

◆ POLLED

◆ BLCC 183K

◆ CA-BPG1446929

◆ 28/2/2022

The 5015C daughters are making fabulous brood cows, and this heifer should be no exception. 183K is moderate, big ribbed, eye appealing and comes from a great cow family. Bred to the easy calving Night Watch.

Bred to WC Night Watch 84E on May 4. Exposed to Wheatland Affinity 8196F June 10 to July 10. Safe to AI date.

Lot **66****BLCC***Miss Custody* **190K**

SPRINGCREEK DRIVER 135Z
SUN RISE LEGAL CUSSTODY 28H
SPRINGCREEK BROOKE 68Z

ERIXON DEALER 63Z
BLCC MISS DEALER 32D
BLCC MISS DYNAMITE 23S

SPRINGCREEK LINER 104S
SPRINGCREEK BK STORMY 61T
KOP CROSBY 137W
SPRINGCREEK BROOKE 11W
HARVIE JDF WALLBANGER111X
ERIXON LADY 35T
TNT DYNAMITE BLACK L137
BLCC MISS 116P

EPDS	CE	BW	WW	YW	MILK	MCE	MWWT	PERF	BW	WW
7.2	4.1	85.7	127.8	28.3	4.8	71.2			92 lbs	700 lbs

◆ POLLED

◆ BLCC 190K

◆ CA-BPG1446930

◆ 1/3/2022

A deep sided Custody daughter from one of our best cow families 190K has volume, eye appeal and lots of predictability bred into her. The dam has produced very well for us, and with her lineage, 190K will provide a quick return on investment.

Bred to R Plus 5015C on May 26. Exposed to Wheatland Affinity 8196F June 10 to July 10. Safe to AI date.

Lot 67 BLCC *Miss Custody* 204K

SPRINGCREEK DRIVER 135Z
SUN RISE LEGAL CUSSTODY 28H
SPRINGCREEK BROOKE 68Z

SKORS BLACK CROCKET 234Z
BLCC MISS BCROCKETT 64D
BLCC MISS BLACK TEDDY 153W

SPRINGCREEK LINER 104S
SPRINGCREEK BK STORMY 61T
KOP CROSBY 137W
SPRINGCREEK BROOKE 11W
LBR CROCKET R81
SKORS MS CHOCOLATE 179S
WHEATLAND RED TEDDY 457P
BLCC MISS DYNAMITE 23S

EPDS	CE	BW	WW	YW	MILK	MCE	MWWT	PERF	BW	WW
6	3.9	82.8	124.5	29.6	4.2	71			94 lbs	645 lbs

- ◆ POLLED
- ◆ CA-BPG1446931
- ◆ BLCC 204K
- ◆ 2/3/2022

An eye appealing daughter of Custody that should be able to raise quality progeny year after year. Volume, capacity, and predictability will be her biggest assets. Again, we are big believers in cow families, and 204K comes from a great one. She sells bred to 5015C.

Bred to R Plus 5015C on May 19. Exposed to Wheatland Affinity 8196F June 10 to July 10. Safe to AI date.

Lot 68 BLCC *Miss Custody* 215K

SPRINGCREEK DRIVER 135Z
SUN RISE LEGAL CUSSTODY 28H
SPRINGCREEK BROOKE 68Z

SPRINGCREEK WALLBANGER 11Z
BLCC MISS WALLBANGER 5E
BLCC MISS BLACKSTING 117Z

SPRINGCREEK LINER 104S
SPRINGCREEK BK STORMY 61T
KOP CROSBY 137W
SPRINGCREEK BROOKE 11W
HARVIE JDF WALLBANGER 111X
SPRINGCREEK LINNE 72S
BLCC MR BLACK STING 155S
BLCC MISS HUSTLER 79U

EPDS	CE	BW	WW	YW	MILK	MCE	MWWT	PERF	BW	WW
9.1	2.6	82.3	123.3	28.9	5	70.1			90 lbs	660 lbs

- ◆ POLLED
- ◆ CA-BPG1446932
- ◆ BLCC 215K
- ◆ 3/3/2022

A black baldy female with that added length and hip that she will pass along to her offspring. 5E is a beautiful cow that has an excellent udder and has a great production record. The potential baldy calf she is carrying by Affinity should be great.

Exposed to Wheatland Affinity 8196F June 10 to July 10.

Lot 69 BLCC *Miss Swagger* 218K

WHEATLAND SWAGGER 343A
MAPLE LAKE 6666
MAPLE LAKE 3266

KUNTZ SHERIFF 8A
BLCC MISS SHERIFF 115G
BLCC MISS SL DEALER 130E

WHEATLAND PREDATOR 922W
WHEATLAND LADY 721 T
WHEATLAND BULL 786T
ACS MS WILMA 265W
KUNTZ MARSHALL 12Y
PEACOCK'S LI'L NETTIE 23Y
SILVER LAKE DEALER 60B
BLCC MISS EVAN 79W

EPDS	CE	BW	WW	YW	MILK	MCE	MWWT	PERF	BW	WW
10.2	2.6	73.1	110.5	26.9	4.8	63.5			90 lbs	655 lbs

- ◆ POLLED
- ◆ CA-BPG1446933
- ◆ BLCC 218K
- ◆ 3/3/2022

The Swagger daughters are making great cows, and this heifer should as well. 218K is hetero black, is full of volume, style, and comes from a powerful Sheriff daughter. The mating to 5015C only adds to this female's potential.

Bred to R Plus 5015C on April 30. Exposed to Wheatland Affinity 8196F June 10 to July 10. Safe to AI date.



Lot 70 BLCC *Miss Custody* 221K

SPRINGCREEK DRIVER 135Z
SUN RISE LEGAL CUSSTODY 28H
SPRINGCREEK BROOKE 68Z

LFE BS LEWIS 322U
BLCC MISS STUBBY 177C
KOP MS TRACKER 192W

SPRINGCREEK LINER 104S
SPRINGCREEK BK STORMY 61T
KOP CROSBY 137W
SPRINGCREEK BROOKE 11W
R PLUS BLACKEDGE
LFE BS MS ARNOLD 135S
CG TRACKER 45T
KOP MS KNIGHT 108R

EPDS	CE	BW	WW	YW	MILK	MCE	MWWT	PERF	BW	WW
7.1	3.7	80.4	118.1	26	2.5	66.2			90 lbs	640 lbs

- ◆ POLLED
- ◆ CA-BPG1446934
- ◆ BLCC 221K
- ◆ 4/3/2022

A soggy made female that comes from a powerful dam. The grandam was a unique female and was in our flush program with great results. 221K has some predictability bred into her, and should have a great 5015C baby.

Bred to R Plus 5015C on May 13. Exposed to Wheatland Affinity 8196F June 10 to July 10. Safe to AI date.

Lot 71 BLCC *Miss Man O War* 224K

CCLT ALLIANCE 91C
WHEATLAND MAN O' WAR 907G
WHEATLAND LADY 519C

LFE ROCHFORD 3013T
BLCC MISS ROCHFORD 258Y
BLCC MISS STING 343U

WS PILGRIM H182U
BROOKS SHINIA 1A
YARDLEY LAD A440
WHEATLAND LADY 321A
LFE MR LEWIS 514N
LFE CALYNA 31M
TNT STING M377
BLCC MISS 150R

EPDS	CE	BW	WW	YW	MILK	MCE	MWWT	PERF	BW	WW
7.2	3.2	76.1	106	21.2	4.1	59.3			94 lbs	638 lbs

- ◆ POLLED
- ◆ CA-BPG1446935
- ◆ BLCC 224K
- ◆ 5/3/2022

A hetero black baldy Man O War daughter with style, eye appeal and will prove to be profitable. The Man O War daughters we have are making great females. 224K is a long bodied, stylish female with a great future.

Bred to R Plus 5015C on May 30. Exposed to Wheatland Affinity 8196F June 10 to July 10.

Lot 72 BLCC *Miss Custody* 225K

SPRINGCREEK DRIVER 135Z
SUN RISE LEGAL CUSSTODY 28H
SPRINGCREEK BROOKE 68Z

R PLUS 5015C
BLCC MISS 5015C 50G
BLCC MISS RED ROCK 59W

SPRINGCREEK LINER 104S
SPRINGCREEK BK STORMY 61T
KOP CROSBY 137W
SPRINGCREEK BROOKE 11W
WFL ABSOLUTE 51Y
IPU MS. 56U LINER 15A
KWA RED ROCK 5T
BLCC MISS RED 284T

EPDS	CE	BW	WW	YW	MILK	MCE	MWWT	PERF	BW	WW
9.1	2.9	88.1	133.5	28	3.6	72.1			92 lbs	640 lbs

- ◆ POLLED
- ◆ CA-BPG1446936
- ◆ BLCC 225K
- ◆ 5/3/2022

A Legal Custody daughter that should be a powerful producer. The dam is a big volume female that we wish we had a pen full of just like her. There is some great predictability bred into this heifer. Bred to Slider for an exciting calf.

Bred to KWA Slider 196H on May 10. Exposed to Wheatland Affinity 8196F June 10 to July 10. Safe to AI date.

Lot 73 BLCC *Miss Swagger* 240K

WHEATLAND SWAGGER 343A
MAPLE LAKE 6666
MAPLE LAKE 3266

R PLUS 5015C
BLCC MISS 5015C 25G
BLCC MISS STUBBY 17B

WHEATLAND PREDATOR 922W
WHEATLAND LADY 721 T
WHEATLAND BULL 786T
ACS MS WILMA 265W
WFL ABSOLUTE 51Y
IPU MS. 56U LINER 15A
LFE BS LEWIS 322U
BLCC MISS RED ROCK 154W

EPDS	CE	BW	WW	YW	MILK	MCE	MWWT	PERF	BW	WW
9.1	3.1	75.9	116	18.9	2.2	56.9			90 lbs	635 lbs

- ◆ POLLED
- ◆ CA-BPG1446937
- ◆ BLCC 240K
- ◆ 7/3/2022

A beautifully made Swagger daughter that would have easily been put in the keeper pen. The dam is a drop dead gorgeous young cow that we just love. 240K is full of volume, style, eye appeal and is bred to the exciting Slider.

Bred to KWA Slider 196H on May 1. Exposed to Wheatland Affinity 8196F June 10 to July 10. Safe to AI date.



Lot 74 BLCC *Miss Legacy* 243K

R PLUS 5015C
BLCC MR 5015C 65H
BLCC MISS DEALER 87C

R PLUS 6296D
BLCC MISS R PLUS 161G
BLCC MISS TOP CHOICE 94S

WFL ABSOLUTE 51Y
IPU MS. 56U LINER 15A
ERIXON DEALER 63Z
BLCC MISS RED 284T
R PLUS 2151Z
MISS R PLUS 3284A
JF BH CHOICE PLUS 909J
BLCC MISS MARCIA 97M

EPDS	CE	BW	WW	YW	MILK	MCE	MWWT	PERF	BW	WW
7.5	3.6	81.7	119.8	22.5	1.9	63.4			88 lbs	620 lbs

- ◆ POLLED
- ◆ CA-BPG1446938
- ◆ BLCC 243K
- ◆ 7/3/2022

A long-bodied female that comes from a great young cow. 243K will be the type of cow that will be a great producer. A black Sheriff or Affinity calf could be very interesting.

Bred to Kuntz Sheriff 8A on June 1. Exposed to Wheatland Affinity 8196F June 10 to July 10.

Lot 75 ADBS *Miss 5015C* 251K

WFL ABSOLUTE 51Y
R PLUS 5015C
IPU MS. 56U LINER 15A

SPRINGCREEKWALLBANGER 11Z
ADBS MISS WALLBANGER 142D
ADBS MISS RED ROCK 79Z

LFE STRAIT UP 454W
WFL MS BLACK FLASH 8068U
SPRINGCREEK LINER 56U
RTC/JETS UPTOWN GIRL 15U
HARVIE JDF WALLBANGER111X
SPRINGCREEK LINNE 72S
KWA RED ROCK 5T
ADBS MISS STING 353X

EPDS	CE	BW	WW	YW	MILK	MCE	MWWT	PERF	BW	WW
8.1	2.9	86.4	135.7	23.6	1.1	66.8			90 lbs	680 lbs

- ◆ POLLED
- ◆ CA-BPG1446939
- ◆ ADBS 251K
- ◆ 8/3/2022

The 5015C daughters we have in production are fantastic females. Easy doing, great udders, and raising outstanding progeny. 251K fits this mold and will prove to be the same. 142D is a big volume, great uddered cow that can get the job done. Should be a great Monument calf.

Bred to Wheatland Monument 28H on May 13. Exposed to Wheatland Affinity 8196F June 10 to July 10. Safe to AI date.

Lot **76** BLCC *Miss Liner* 288K

SPRINGCREEK LINER 56U
JPCC MR LINER 75B
DRAKE TULA 1R
KWA AUTHORITY 171E
TWIN BRAE GENEVA 94G
TWIN BRAE MS ERICA 943E

RCC/TCF LINE DRIVE M181
NEVAS L93
TCF/RCC TEMPTATION GJ640
DCC 5N
CDI AUTHORITY 77X
KWA MS CROCKETT 87U
TWIN BRAE EDGE 731A
TWIN BRAE ULSA 843U

EPDS	CE	BW	WW	YW	MILK	MCE	MWWT	PERF	BW	WW
6.5	3.7	80	129.7	30.4	3.9	70.4			94 lbs	628 lbs

- ◆ POLLED
- ◆ CA-BPG1446940
- ◆ BLCC 288K
- ◆ 14/3/2022

The Liner daughters have been big on production, easy fleshing, thick made females with excellent udders that just raise powerful progeny. 288K has lots of capacity and rib shape and will prove to be profitable. Bred to Night Watch.

Bred to WC Night Watch 84E on May 8. Exposed to Wheatland Affinity 8196F June 10 to July 10. Safe to AI date.

Lot **77** BLCC *Miss Swagger* 296K

WHEATLAND SWAGGER 343A
MAPLE LAKE 6666
MAPLE LAKE 3266
R PLUS 5015C
BLCC MISS 5015C 156E
SPRINGCREEK SKY 50T

WHEATLAND PREDATOR 922W
WHEATLAND LADY 721 T
WHEATLAND BULL 786T
ACS MS WILMA 265W
WFL ABSOLUTE 51Y
IPU MS. 56U LINER 15A
LAZY S RED SKY 120R
SPRINGCREEK LINNE 23R

EPDS	CE	BW	WW	YW	MILK	MCE	MWWT	PERF	BW	WW
7.5	3.6	77.8	119.7	20.9	1.9	59.8			92 lbs	622 lbs

- ◆ POLLED
- ◆ CA-BPG1446941
- ◆ BLCC 296K
- ◆ 16/3/2022

A sweet Swagger daughter that should be a producer. Lots of depth and capacity, she will be the kind of female that is low maintenance and productive for many years. The dam is quickly becoming one of our favorites. She carries an exciting service to Slider.

Bred to KWA SLIDER 196H on May 4. Exposed to Wheatland Affinity 8196F June 10 to July 10. Safe to AI date.



Lot **78** BLCC *Miss Swagger* 298K

WHEATLAND SWAGGER 343A
MAPLE LAKE 6666
MAPLE LAKE 3266

KOP CROSBY 137W
BLCC MISS CROSBY 214C
BLCC MISS 124R 183U

WHEATLAND PREDATOR 922W
WHEATLAND LADY 721 T
WHEATLAND BULL 786T
ACS MS WILMA 265W
MUIRHEAD LIVE WIRE 95R
KOP MS BENGIE 6P
BLCC 124R
BLCC MISS 13R

EPDS	CE	BW	WW	YW	MILK	MCE	MWWT	PERF	BW	WW
5.1	5.7	78.3	116.4	25.8	4	65			90 lbs	630 lbs

- ◆ POLLED
- ◆ CA-BPG1446942
- ◆ BLCC 298K
- ◆ 16/3/2022

A powerful daughter of Swagger that is well made with tons of capacity, thickness, setting up a great udder and comes from a model female. 214C is a great Crosby daughter that continues to out do herself. This hetero black female is bred to 5015C.

Bred to R Plus 5015C on May 6. Exposed to Wheatland Affinity 8196G June 10 to July 10. Safe to AI date.

Lot **79** BLCC *Miss Edge* 305K

S A V CUTTING EDGE 4857
MICH WHEATLAND BULL 7147E
COPPER CRK LADY 1210

WHEATLAND REVENUE 677D
BLCC MISS REVENUE 103H
BLCC MISS BCROCKETT 56D

S A V HARVESTOR 0338
S A V BLACKCAP MAY 5530
EXAR LUTTON 1831
CHERRY KNOLL LADY LOLA
PROFIT
WHEATLAND LADY 935W
SKORS BLACK CROCKET 234Z
KOP MS TRACKER 213X

EPDS	CE	BW	WW	YW	MILK	MCE	MWWT	PERF	BW	WW
6.7	2.8	69.5	107.8	21.4	3.8	56.2			90 lbs	615 lbs

- ◆ POLLED
- ◆ CA-BPRS1446943
- ◆ BLCC 305K
- ◆ 18/3/2022

AA half blood female that will sell without papers. A broody half blood that has the look of a producer that will raise the bar year after year. The dam is an excellent uddered low maintenance female that continues to produce.

Bred to KWA Slider 196H on May 28. Exposed to Wheatland Affinity 8196F June 10 to July 10. Safe to AI date.



Lot **80** BLCC *Miss Swagger* 306K

WHEATLAND SWAGGER 343A
MAPLE LAKE 6666
MAPLE LAKE 3266

ERIXON DEALER 63Z
BLCC MISS DEALER 265G
BLCC MISS PORSCHE 1Z

WHEATLAND PREDATOR 922W
WHEATLAND LADY 721 T
WHEATLAND BULL 786T
ACS MS WILMA 265W
HARVIE JDF WALLBANGER111X
ERIXON LADY 35T
VIRGINIA'S PORSCHE 64P
BLCC MISS 128R

EPDS	CE	BW	WW	YW	MILK	MCE	MWWT	PERF	BW	WW
6.6	4.8	77.7	116.1	21.9	1.4	60.8			90 lbs	610 lbs

- ◆ POLLED
- ◆ CA-BPG1446944
- ◆ BLCC 306K
- ◆ 18/3/2022

A Swagger daughter that is very complete. 306K carries the beefiness and do-ability of her sire, and the predictability and longevity of her grandam that will only make you money. 265G is a promising young female that we are really impressed with, excellent pheno type and udder. The breeding to 5015C only adds to this intriguing lot.

Bred to R Plus 5015C on May 3. Exposed to Wheatland Affinity 8196F June 10 to July 10. Safe to AI date.

Lot **81** BLCC *Miss Revenue* 316K

PROFIT
WHEATLAND REVENUE 677D
WHEATLAND LADY 935W

SPRINGCREEK RANSOM 14Y
BLCC MISS RANSOM 310D
BLCC MISS D92 NUGGET 210S

WS PILGRIM H182U
WAGR PANARAMA 204Z
WHEATLAND BULL 680S
WHEATLAND LADY 727 T
MADER P BLK RANSOM 23U
SPRINGCREEK LINNE 95R
IPU RED NUGGET 132N
TNT MISS WHOOPIE D92

EPDS	CE	BW	WW	YW	MILK	MCE	MWWT	PERF	BW	WW
2.8	4.9	82.5	120.3	22.8	-0.6	64.1			80 lbs	585 lbs

- ◆ POLLED
- ◆ CA-BPG1446945
- ◆ BLCC 316K
- ◆ 22/3/2022

An eye appealing, big volume Revenue daughter that will mature to be a powerful producer. 316K has a powerful cow family behind her and will have the ability to raise top quality progeny year after year. We believe in cow families and with Whoopie D 92 in her back ground, this female has potential. The mating to 5015C compliments her very well.

Bred to R Plus 5015C on April 26. Exposed to Wheatland Affinity 8196F June 10 to July 10. Safe to AI date.

Lot 82 BLCC Miss Legacy 324K

R PLUS 5015C
BLCC MR 5015C 65H
BLCC MISS DEALER 87C

TWIN BRAE DUST BUSTER
TWIN BRAE GALAXY 433G
TWIN BRAE MS DIVA 433D

WFL ABSOLUTE 51Y
IPU MS. 56U LINER 15A
ERIXON DEALER 63Z
BLCC MISS RED 284T
FBF1 COMBUSTIBLE
TWIN BRAE MS MAGIC 51A
KOP ZODIAK 92Z
TWIN BRAE FIRE LADY

EPDS	CE	BW	WW	YW	MILK	MCE	MWWT	PERF	BW	WW
5.6	4.6	81.3	125.2	22.6	1.5	63.3			92 lbs	590 lbs

- ◆ POLLED
- ◆ CA-BPG1446946
- ◆ BLCC 324K
- ◆ 23/3/2022

Lots of power, performance and eye appeal in this great black heifer. The job her sire is doing for us really makes us proud, 324K is a great example. Her dam is a promising young female that we are liking. Sells bred to Monument.

Bred to Wheatland Monument 28H on May 16. Exposed to Wheatland Affinity 8196F June 10 to July 10. Safe to AI date.

Lot 83 BLCC Miss Swagger 335K

WHEATLAND SWAGGER 343A
MAPLE LAKE 6666
MAPLE LAKE 3266

KWA RED ROCK 5T
BLCC MISS ROCK 273Y
BLCC MISS RED 284T

WHEATLAND PREDATOR 922W
WHEATLAND LADY 721 T
WHEATLAND BULL 786T
ACS MS WILMA 265W
DAY RED PEPPER DOC 984R
KWA MS ROCK 7P
LAZY S BLACK 823P
BLCC MISS LITA 94L

EPDS	CE	BW	WW	YW	MILK	MCE	MWWT	PERF	BW	WW
9.3	4.1	78.9	118.6	25	5.2	64.5			88 lbs	570 lbs

- ◆ POLLED
- ◆ CA-BPG1446947
- ◆ BLCC 335K
- ◆ 28/3/2022

A great hetero black female sired by Swagger and mothered by a great female that we have flushed and had tremendous success with. 273Y is a big volume deep ribbed perfect uddered cow with a fantastic production record. Very little guesswork here and she's bred to 5015C.

Bred to R Plus 5015C on April 27. Exposed to Wheatland Affinity 8196F June 10 to July 10. Safe to AI date.



Lot 84 BLCC Miss Custody 361K

SPRINGCREEK DRIVER 135Z
SUN RISE LEGAL CUSTODY 28H
SPRINGCREEK BROOKE 68Z

KENCO/MF POWERLINE 204L
BLCC MISS POWERLINE 143W
BLCC MISS BLACKKARAMEL79K

SPRINGCREEK LINER 104S
SPRINGCREEK BK STORMY 61T
KOP CROSBY 137W
SPRINGCREEK BROOKE 11W
HC POWER DRIVE 88H
SAFN GLAMOUR 11J
BLACK POLLED DAKOTA
CIRCLE S 304Y

EPDS	CE	BW	WW	YW	MILK	MCE	MWWT	PERF	BW	WW
6.5	3.8	73	109.3	29.6	3.5	66.1			90 lbs	545 lbs

- ◆ POLLED
- ◆ CA-BPG1446948
- ◆ BLCC 361K
- ◆ 3/4/2022

A daughter of Legal Custody that is mothered by a production female that is ready for her pension! 143W has a great production record for us, and is still getting the job done in her golden years. 361K has looks, style, and longevity bred into her. A black Affinity calf would be very desirable.

Exposed to Wheatland Affinity 8196F June 10 to July 10. Safe to AI date.

Lot 85 ADBS Miss Revenue 366K

PROFIT
WHEATLAND REVENUE 677D
WHEATLAND LADY 935W

LFE BLACK RIDGELINE 536W
ADBS MISS RIDGELINE 110A
ADBS MISS UNDERTAKER 102U

WS PILGRIM H182U
WAGR PANARAMA 204Z
WHEATLAND BULL 680S
WHEATLAND LADY 727 T
LFE MR LEWIS 462P
LFE RS FIRSTBASE 29S
TNT STING M377
ADBS MISS SANDY 105S

EPDS	CE	BW	WW	YW	MILK	MCE	MWWT	PERF	BW	WW
4.2	4.1	75.1	106.4	23.2	-0.5	60.8			92 lbs	640 lbs

- ◆ POLLED
- ◆ CA-BPG1446949
- ◆ ADBS 366K
- ◆ 11/4/2022

A long-bodied female that comes from a great cow. 366K will be the type of cow that will produce extremely well as all Revenue daughters do. Bred to the exciting Slider.

Bred to KWA Slider 196H on May 1. Exposed to Wheatland Affinity 8196F June 10 to July 10. Safe to AI date

FULLBLOODS



Lot **86** BLCC *Miss Battle Cry* 13K

BEE BATTLE CRY 282B
NAC BATTLE CRY 4F
MI MS DALLAS 39D

SILVER LAKE DEALER 60B
BLCC MISS SL DEALER 298H
BLCC MISS HEARTLAND 117C

CROSSROAD RADIUM 789U
BEE KIARA 282Z
APLX AXEL 5Z
MS MI ABIGAIL 33A
CHAMPS ROMANO
BLCC MISS STRIDE 57W
BLCC HEARTLAND 434X
BLCC MISS EVAN 196U

EPDS	CE	BW	WW	YW	MILK	MCE	MWWT	PERF	BW	WW
	9.9	3.7	68	93.5	42.6	4.9	76.6		82 lbs	740 lbs

- ◆ HORNED
- ◆ CA-1446950
- ◆ BLCC 13K
- ◆ 28/1/2022

A powerful Battle Cry daughter that we would love to have kept at home 13K is the kind of fullblood that really gets us excited. Tremendous capacity, do-ability, and eye appeal and mothered by a great young cow. Should be a great calf by Outlook

Bred to Anchor D Outlook on May 26. Exposed to Wheatland Affinity 8196F June 10 to July 10. Safe to AI date.



Lot **87** BLCC *Miss Battle Cry* 18K

BEE BATTLE CRY 282B
NAC BATTLE CRY 4F
MI MS DALLAS 39D

CROSSROAD POLLED FUTURE
BLCC MISS FUTURE 296H
BLCC MISS SL DEALER 316E

CROSSROAD RADIUM 789U
BEE KIARA 282Z
APLX AXEL 5Z
MS MI ABIGAIL 33A
CROSSROAD VINTAGE 125Z
CROSSROAD ZELESTE 19Z
SILVER LAKE DEALER 60B
BLCC MISS JUGGERNAUT 120B

EPDS	CE	BW	WW	YW	MILK	MCE	MWWT	PERF	BW	WW
10	3.4	66.9	90.4	42.7	3.3	76.2		86 lbs	740 lbs	

- ◆ HORNED
- ◆ CA-1446951
- ◆ BLCC 18K
- ◆ 31/1/2022

A truly great fullblood female. One just has to love the power, capacity, presentation, eye appeal and sheer awesomeness that she displays. The dam is a great young female that we really like and comes from a great cow family. Bred early to Outlook for an exciting baby.

Bred to Anchor D Outlook on May 1. Exposed to Wheatland Affinity 8196F June 10 to July 10. Safe to AI date.

Lot **88** BLCC *Miss Houston* 97K

ROGANT
PRL HOUSTON 005H
MS PRL NITE-ANCHOR 109B

NCK RENEGADE 16R
BLCC MISS RENEGADE 55A
BLCC MISS APOLLO 58S

ROGER
LORIS
MR PRL ANCHOR 088Y
MISS KNIGHT 156S
NAC UNION'S LEGACY 29L
NORTHERN LIGHT MSMAGIC33J
GIDSCO APPOLLO 3F
BLCC MISS JEWEL 50J

EPDS	CE	BW	WW	YW	MILK	MCE	MWWT	PERF	BW	WW
	14	6.3	71.8	107.7	35.3	2.2	71.2		96 lbs	680 lbs

- ◆ HORNED
- ◆ CA-1446952
- ◆ BLCC 97K
- ◆ 20/2/2022

Some old school genetics is behind this heifer, but when they turn out like this sometimes old school is good! 97K is a dark red pigmented female that comes from a great cow family. We had tremendous success with the Houston daughters we had in production. Bred to Outlook.

Bred to Anchor D Outlook on May 10. Exposed to Wheatland Affinity 8196F June 10 to July 10. Safe to AI date.

Lot **89** BLCC *Miss Poll Frontier* 118K

BEL WESTERN UNION 5Z
TWIN BRAE WESTERN FRONTIER 8F
TWIN BRAE MS DIDI 78Z

SILVER LAKE DEALER 60B
BLCC MISS SL DEALER 211E
WCC WELLS' WEDNESDAY 927W

RICKARDSTOWN JUMBO
BEL HELGA 9TH
GIBBY'S REAL DEAL 25T
TWIN BRAE MS HUGO 178X
CHAMPS ROMANO
BLCC MISS STRIDE 57W
CEN RENEGADE 504R
SS SAFARA 13S FF

EPDS	CE	BW	WW	YW	MILK	MCE	MWWT	PERF	BW	WW
	5.7	51	68.8	94.5	40.7	2.2	75.1		92 lbs	675 lbs

- ◆ POLLED
- ◆ CA-P1446953
- ◆ BLCC 118K
- ◆ 22/2/2022

Polled Full Fleckvieh daughter of Western Frontier that has eye appeal and a powerful cow family behind her. The grandam has been flushed very successfully and we have some great progeny from her. The dam 211E is a beautiful uddered, eye appealing cow that will likely replace her dam in our flush program. Vet checked bred in the exposure to Affinity.

Bred to NAC Battle Cry 4F on May 10. Exposed to Wheatland Affinity 8196F June 10 to July 10. Bred to Affinity.

Lot 90 BLCC Miss Poll Frontier 125K

BEL WESTERN UNION 5Z
TWIN BRAE WESTERN FRONTIER 8F
TWIN BRAE MS DIDI 78Z

SILVER LAKE DEALER 60B
BLCC MISS SL DEALER 155E
MFI LOLITA 8046

RICKARDSTOWN JUMBO
BEL HELGA 9TH
GIBBY'S REAL DEAL 25T
TWIN BRAE MS HUGO 178X
CHAMPS ROMANO
BLCC MISS STRIDE 57W
GIBBONS JEREMIAH
ANCHOR "T" ANKA 58L

EPDS	CE	BW	WW	YW	MILK	MCE	MWWT	PERF	BW	WW
2.3	7.1	76.4	107.5	41.4	-2.1	79.6			90 lbs	680 lbs

- ◆ POLLED
- ◆ CA-P1446954
- ◆ BLCC 125K
- ◆ 24/2/2022

Polled Full Fleckvieh female that goes back to a very influential female purchased from the MFI dispersal. 125K is a red, blaze faced female that one would build a program around.

Bred to NAC Battle Cry 4F on May 7. Exposed to Wheatland Affinity 8196F June 10 to July 10.

Lot 91 BLCC Miss Battle Cry 151K

BEE BATTLE CRY 282B
NAC BATTLE CRY 4F
MI MS DALLAS 39D

SILVERLAKE ROCKY 238C
BLCC MISS ROCKY 278H
BLCC MISS JUGGERNAUT 120B

CROSSROAD RADIUM 789U
BEE KIARA 282Z
APLX AXEL 5Z
MS MI ABIGAIL 33A
LFS POL BALBOA 40U
SILVERLAKE ISLA
MFI JEREMIAH 902Z
BLCC MISS HOUSTON 144U

EPDS	CE	BW	WW	YW	MILK	MCE	MWWT	PERF	BW	WW
9.8	3.2	68.3	91.1	42.3	4.4	76.4			88 lbs	665 lbs

- ◆ HORNED
- ◆ CA-1446955
- ◆ BLCC 151K
- ◆ 26/2/2022

Full Fleckvieh daughter of Battle Cry that has lots of volume, eye appeal and should make a productive brood cow. Same great Fleckvieh bloodlines behind her, and sells bred to Outlook Should be a great calf.

Bred to Anchor D Outlook on May 2. Exposed to Wheatland Affinity 8196F June 10 to July 10. Safe to AI date.



Lot 92 BLCC Miss Poll Frontier 172K

BEL WESTERN UNION 5Z
TWIN BRAE WESTERN FRONTIER 8F
TWIN BRAE MS DIDI 78Z

STARWEST POL BLUEPRINT
NAC ZOIEY 89G
NAC 90Z

RICKARDSTOWN JUMBO
BEL HELGA 9TH
GIBBY'S REAL DEAL 25T
TWIN BRAE MS HUGO 178X
ANCHOR "T" RUSTY 59G
PHS HOMOZYGOUS XCEPTIONAL
MFI FUSION 5238
NAC PAULA 46P

EPDS	CE	BW	WW	YW	MILK	MCE	MWWT	PERF	BW	WW
5.5	5.5	73.1	99.3	39.6	1	76.2			90 lbs	640 lbs

- ◆ POLLED
- ◆ CA-P1446956
- ◆ BLCC 172K
- ◆ 28/2/2022

Polled Full Fleckvieh daughter of Western Frontier that looks like she will be a producer. Lots of depth, capacity and comes from a proven mother cow that has been a great producer for us. 89G raised a high selling son for us her first time out, she is a very correct, great uddered female. 172K is also bred to Battle Cry.

Bred to NAC Battle Cry 4F on May 5. Exposed to Wheatland Affinity 8196F June 10 to July 10. Safe to AI date.

Lot 93 BLCC Miss Frontier 214K

BEL WESTERN UNION 5Z
TWIN BRAE WESTERN FRONTIER 8F
TWIN BRAE MS DIDI 78Z

NUG DELMONTE 81D
APPLECROSS TANIS 12G
APPLECROSS TALIA 10C

RICKARDSTOWN JUMBO
BEL HELGA 9TH
GIBBY'S REAL DEAL 25T
TWIN BRAE MS HUGO 178X
STARWEST POL BLUEPRINT
NUG MISS 862U
FGAF WOVEFFECT 016A
APPLECROSS TAYLOR 5Y

EPDS	CE	BW	WW	YW	MILK	MCE	MWWT	PERF	BW	WW
5.6	5	74.2	103.6	35.6	1.3	72.7			88 lbs	645 lbs

- ◆ HORNED
- ◆ CA-1446957
- ◆ BLCC 214K
- ◆ 3/3/2022

A soggy made daughter of Western Frontier that has some substance and capacity. The dam was purchased from Apple Cross Cattle Company and has made an impact here. The Western Frontier daughters we have in production are doing good.

Bred to Anchor D Outlook on May 30. Exposed to Wheatland Affinity 8196F June 10 to July 10.

Lot **94** BLCC *Miss Sl Dealer* 219K

CHAMPS ROMANO
SILVER LAKE DEALER 60B
BLCC MISS STRIDE 57W

IVR ROMMEL N53
BLCC MISS ROMMEL 66C
BLCC MISS 117R

SMITHBILT MOLSON 21M
CHAMPS PRICILLA
BAR 5 SA STRIDE 413P
BLCC MISS REGAN 253S
SH ROMULUS F53R
GREAT GUNS LILLI-MARLEN
PRL HOUSTON 005H
BLCC MISS 169N

EPDS	CE	BW	WW	YW	MILK	MCE	MWWT	PERF	BW	WW
2.2	6.5	72.6	107.7	41.7	0.6	78			94 lbs	670 lbs

- ◆ HORNE
- ◆ CA-1446958
- ◆ BLCC 219K
- ◆ 4/3/2022

Lots of capacity and eye appeal in 219K, she is typical of the progeny that Dealer has sired for us. The dam is a great uddered female that we really like. The Dealer daughters we have in production here are doing a great job.

Bred to Anchor D Outlook on June 1. Exposed to Wheatland Affinity 8196F June 10 to July 10.

Lot **95** BLCC *Miss Frontier* 262K

BEL WESTERN UNION 5Z
TWIN BRAE WESTERN FRONTIER 8F
TWIN BRAE MS DIDI 78Z

CROSSROAD RADIUM 789U
BLCC MISS RADIUM 17C
BLCC MISS RENEGADE 58A

RICKARDSTOWN JUMBO
BEL HELGA 9TH
GIBBY'S REAL DEAL 25T
TWIN BRAE MS HUGO 178X
MF MR. EVAN 14P
CROSSROAD PANDITA 308P
NCK RENEGADE 16R
BLCC MISS ROSS 309T

EPDS	CE	BW	WW	YW	MILK	MCE	MWWT	PERF	BW	WW
4.8	5.6	71.8	95.3	39.2	0.6	75.1			98 lbs	640 lbs

- ◆ HORNE
- ◆ CA-1446959
- ◆ BLCC 262K
- ◆ 10/3/2022

Full Fleckvieh, heavily pigmented daughter of Western Frontier that is long bodied, smooth made and comes from a very heavy milking Radium daughter. 262K should have some great predictability in her as she is a descendant of the great Parkhill Farm cow that we flushed successfully many years ago.

Bred to Anchor D Outlook on May 28. Exposed to Wheatland Affinity 8196F June 10 to July 10.



Lot **96** BLCC *Miss Frontier* 309K

BEL WESTERN UNION 5Z
TWIN BRAE WESTERN FRONTIER 8F
TWIN BRAE MS DIDI 78Z

BHR BARON SA 2842P
BLCC MISS BARONESS 309Z
BLCC MISS ADONIS 428U

RICKARDSTOWN JUMBO
BEL HELGA 9TH
GIBBY'S REAL DEAL 25T
TWIN BRAE MS HUGO 178X
KYKSO HADAU
TRANS-MAGALIES MABIE
DOUBLE BAR D ADONIS 603N
GRINALTA'S LELA

EPDS	CE	BW	WW	YW	MILK	MCE	MWWT	PERF	BW	WW
2.9	5.8	67.6	91.6	38.2	-2.1	72			94 lbs	590 lbs

- ◆ HORNE
- ◆ CA-1446960
- ◆ BLCC 309K
- ◆ 19/3/2022

Full Fleckvieh dark red female mothered by a tremendously deep ribbed cow 309K will go onto make a productive cow that will raise some great progeny.

Bred to NAC Battle Cry 4F May 11. Exposed to Wheatland Affinity 8196F June 10 to July 10. Vets' opinion bread early in exposure.

Lot **97** BLCC *Miss Frontier* 318K

BEL WESTERN UNION 5Z
TWIN BRAE WESTERN FRONTIER 8F
TWIN BRAE MS DIDI 78Z

STARWEST TOTAL VALUE
BLCC MISS VALUE 205G
MFI FRIEDA 8108

RICKARDSTOWN JUMBO
BEL HELGA 9TH
GIBBY'S REAL DEAL 25T
TWIN BRAE MS HUGO 178X
DOUBLE BAR D SPITFIRE 20X
PHS POLLED WINFALL 27W
ANCHOR "T" LEGEND 7H
MFI FRIEDA 5052

EPDS	CE	BW	WW	YW	MILK	MCE	MWWT	PERF	BW	WW
3.9	5.4	75.2	105.1	37.3	0.7	74.9			96 lbs	610 lbs

- ◆ HORNE
- ◆ CA-1446961
- ◆ BLCC 318K
- ◆ 23/3/2022

Full Fleckvieh female with some frame and substance. 318K is a long-bodied heifer with powerful genetics, the great Legend cow purchased from MFI anchors this unique female Bred to Affinity.

Bred to Wheatland Affinity June 10. Exposed to Affinity June 10 to July 10.

Lot 98 BLCC Miss Hudson 320K

BLACK GOLD TAQA 124D
ANTRIM HUDSON 24H
BLCC MISS JUSTIFIED 58Z

BLCC HEARTLAND 434X
BLCC MISS HEARTLAND 140C
BLCC MISS AUTOBAHN 378Y

STARWEST BRYCK
MS BGS POLL HILLORY 24W
LFE JUSTIFIED 7328X
BLCC MISS GRANDE 71U
SHAWACRES JAHARI 50L
MFI MISS FEODORA 3117
DOUBLE BAR D AUTOBAHN
BLCC MISS JASPER 279S

PE	CE	BW	WW	YW	MILK	MCE	MWWT	PERF	BW	WW
	2.3	5.8	69.3	102.0	37.4	0.0	72.0		94 lbs	590 lbs

- ◆ HORNED
- ◆ UNREGISTERED
- ◆ BLCC 320K
- ◆ DOB

320K should be a producer as her dam and grandam have done the same for us. Bred to Outlook.

Bred to Anchor D Outlook on May 16. Exposed to Wheatland Affinity 8196F June 10 to July 10. Safe to AI date.

Lot 99 BLCC Miss Frontier 330K

BEL WESTERN UNION 5Z
TWIN BRAE WESTERN FRONTIER 8F
TWIN BRAE MS DIDI 78Z

SILVER LAKE DEALER 60B
BLCC MISS SL DEALER 161D
BLCC MISS EVEREST 2A

RICKARDSTOWN JUMBO
BEL HELGA 9TH
GIBBY'S REAL DEAL 25T
TWIN BRAE MS HUGO 178X
CHAMPS ROMANO
BLCC MISS STRIDE 57W
DOUBLE BAR D EVEREST 4R
MFI FLORA 3065

EPDS	CE	BW	WW	YW	MILK	MCE	MWWT	PERF	BW	WW
	4.7	5.7	69.7	95.4	38.3	0.7	73.2		94 lbs	570 lbs

- ◆ HORNED
- ◆ CA-1446962
- ◆ BLCC 330K
- ◆ 25/3/2022

Full Fleckvieh daughter of Western Frontier and the great 161D cow that we just love. Moderate frame, setting up a great udder and lots of eye appeal.

Bred to Anchor D Outlook on May 15. Exposed to Wheatland Affinity 8196F June 10 to July 10. Bred early in exposure.

Lot 100 BLCC Miss Sl Dealer 363K

CHAMPS ROMANO
SILVER LAKE DEALER 60B
BLCC MISS STRIDE 57W

PRL HOUSTON 005H
BLCC MISS HOUSTON 78W
BLCC MISS KIMBERLY 74K

SMITHBILT MOLSON 21M
CHAMPS PRICILLA
BAR 5 SA STRIDE 413P
BLCC MISS REGAN 253S
ROGANT
MS PRL NITE-ANCHOR 109B
FS MR DYNASTY 345C
SUNNY VALLEY DIAMOND 5G

EPDS	CE	BW	WW	YW	MILK	MCE	MWWT	PERF	BW	WW
	3.7	6.5	72.1	104.4	39	3.8	75.1		96 lbs	530 lbs

- ◆ HORNED
- ◆ CA-1446963
- ◆ BLCC 363K
- ◆ 6/4/2022

A long-bodied Dealer daughter that comes from a great female in 78W. 363K has length, eye appeal and should be a producer.

Bred to Anchor D Outlook on June 1. Exposed to Wheatland Affinity 8196F June 10 to July 10. Safe to AI date.

Lot 101 BLCC Miss Sl Dealer 367K

CHAMPS ROMANO
SILVER LAKE DEALER 60B
BLCC MISS STRIDE 57W

BHR BARON SA 2842P
BLCC MISS BARONESS 78Z
BLCC MISS HOUSTON 93W

SMITHBILT MOLSON 21M
CHAMPS PRICILLA
BAR 5 SA STRIDE 413P
BLCC MISS REGAN 253S
KYKSO HADAU
TRANS-MAGALIES MABIE
PRL HOUSTON 005H
BLCC MISS EXCEL 317T

EPDS	CE	BW	WW	YW	MILK	MCE	MWWT	PERF	BW	WW
	2.8	6	70.9	104.6	39.8	-1.2	75.3		92 lbs	520 lbs

- ◆ HORNED
- ◆ CA-1446964
- ◆ BLCC 367K
- ◆ 11/4/2022

Full Fleckvieh, long-bodied female that should produce marketable progeny year after year. This heifer is well bred and has a great Fleckvieh pedigree. The red baldy baby she is carrying will be unique.

Exposed to Wheatland Affinity 8196F June 10 to July 10. Observed Jun 12.

REF SIRES



KWA Red Rock 5T

ref SIRE KWA *Red Rock* 5T

WHF RED DOC 940E
DAY RED PEPPER DOC 984R
 DAY MS RED PEPPER 839K

KJLI THE ROCK 1L
KWA MS ROCK 7P
 BBN MS BLACK FIGURES 14K

ER BIG SKY 545B
 ER MISS REDLINE 40B
 RED PEPPER
 SRN MS STEWARD
 SPRINGCREEK WARREN 50H
 LFE AMBER 27H
 3C FULL FIGURES C288 BLK
 WFL BLACK LADY 505H

CE	BW	WW	YW	MILK	MCE	MWWT
16.7	0.0	79.0	124.5	32.4	13.1	71.9

◆ POLLED PUREBRED
 ◆ PG678615

◆ KWA 5T
 ◆ JANUARY 11, 2007



Kuntz Sheriff 8A

ref SIRE KUNTZ *Sheriff* 8A

BMD RED WALKING TALL 13W
KUNTZ MARSHALL 12Y
 TIMBER WENDY 3W

MUIRHEAD'S KOSMO 27N
PEACOCK'S LI'L NETTIE 23Y
 MUIRHEAD NETTIE 5W

TESS PINNACLE 611S
 RAINALTA TOMBOY DYNAMITE 74S
 LFE BOMBSHELL 508N
 TIMBER TRINA 3T
 JDN CISCO'S PRIDE 10K
 CZAR MS KONZES REWARD 97G
 KS BRAVADO P68
 KIMLAKE NETTIE 742T

CE	BW	WW	YW	MILK	MCE	MWWT
19.0	-4.0	65.4	101.7	30.3	9.5	63.0

◆ POLLED PUREBRED
 ◆ PG794268

◆ KNTZ 8A
 ◆ JAUNARY 21, 2013



Black Gold Approval 71E

ref SIRE BLACK GOLD *Approval* 71E

W/C LOADED UP 1119Y
W/C LOADED UP 79C
 MISS WERNING KP 8543U

SVS CAPTAIN MORGAN 11Z
RF CERTAINLY FLIRTIN 532C
 RF CERTAINLY FLIRTIN 202Z

REMINGTON LOCK N LOAD 54U
 AUBREYS BLACK BLAZE III
 WAGR DREAM CATCHER 03R
 MISS WERNING 534R
 HARVIE JDF WALLBANGER111X
 SUNNYVALLEY BLK JENNA 88U
 WHEATLAND STOUT 930W
 RF FLIRTIN FOR CERTIN 37U

CE	BW	WW	YW	MILK	MCE	MWWT
14	-0.3	57.6	83.2	21.3	7.2	50.1

◆ POLLED PUREBRED
 ◆ PG1221918

◆ CLNO 71E
 ◆ JANUARY 27, 2017



NGDB Structure 34D

ref SIRE NGDB *Structure* 34D

LFE VIPER 455U
NCB COBRA 47Y
 NCB MISS DREAM 22T

DRAKE POKER FACE 2X
NGDB LOUISE 411 B \ HP-HOP CC-HOB
 NGDB 204Z

TNT TOP GUN R244
 LFE CHARO 56K
 CNS DREAM ON L186
 NUG SANDY 506R
 JS SURE BET 4T
 DRAKE TULA 1R
 OLF ODIN U5
 LFE BS BROCKALEE 90X

CE	BW	WW	YW	MILK	MCE	MWWT
1.3	6.9	104.9	151.6	16.9	2.6	69.4

◆ POLLED PUREBRED
 ◆ BPG1185876

◆ NGDB 34D
 ◆ JANUARY 23, 2016

REF SIRES

ref **SIRE** **NAC** *Battle Cry* **4F**

CROSSROAD RADIUM 789U
BEE BATTLE CRY 282B
BEE KIARA 282Z

APLX AXEL 5Z
MI MS DALLAS 39D
MS MI ABIGAIL 33A

MF MR. EVAN 14P
CROSSROAD PANDITA 308P
EAGLE-RIDGE UNITY 30U
EAGLE-RIDGE SIERRA 32S
GIDSCO APPOLLO 3F
HEMR TASHA 3T
SOUTH SEVEN RESERVE 109X
MJB USHA 4U

CE	BW	WW	YW	MILK	MCE	MWWT
15.6	0.6	66.7	92.3	39	6.8	72.4

◆ **HORNED FULL BLOOD**
◆ 1267450

◆ **NAC 4F**
◆ **JANUARY 1, 2018**



NAC Battle Cry 4F

ref **SIRE** **R PLUS** *5051C*

LFE STRAIT UP 454W
WFL ABSOLUTE 51Y
WFL MS BLACK FLASH 8068U

SPRINGCREEK LINER 56U
IPU MS. 56U LINER 15A
RTC/JETS UPTOWN GIRL 15U

LFE MR LEWIS 514N
LFE RS AMBER 216T
R PLUS BLACKEDGE
WFL MS RED FLASH 136P
RCC/TCF LINE DRIVE M181
NEVAS L93
TNT GUNNER N208
3D MISS BLACK KATIE 461P

CE	BW	WW	YW	MILK	MCE	MWWT
8.7	2	90.8	146.8	17.3	1.9	62.7

◆ **POLLED PUREBRED**
◆ BPG1160943

◆ **LRPS 5015C**
◆ **JANUARY 24, 2015**



R PLUS 5051C

ref **SIRE** **W/C** *Night Watch* **84E**

CCR COWBOY CUT 5048Z
CCR ANCHOR 9071B
CCR MS BARB 2120Z

WAGR DREAM CATCHER 03R
MISS WERNING KP 8543U
MISS WERNING 534R

TRIPLE C SINGLETARY S3H
CCR MS 4045 TIME 7322T
CCR TRIBUTE 4078X
CCRMS10430FPREC1023 7035
CNS DREAM ON L186
3C MELODY M668 BZ
R&R WAREHOUSE K609
MISS WERNING 934J

CE	BW	WW	YW	MILK	MCE	MWWT
17.3	-3.4	77.5	106.4	32.7	10	71.4

◆ **POLLED PUREBRED**
◆ 3336327

◆ **84E**
◆ **FEBRUARY 28, 2017**



W/C Night Watch 84E

ref **SIRE** **ANCHOR D** *Outlook*

VIRGINIA RADISON 5Z
VIRGINIA PRECISION 16C
BROCK YODA

FGAF BARBOSSA 707X
ANCHOR D KAEI 255C
ANCHOR D RUBY RED 198A

CROSSROAD RADIUM 789U
SS LEGACY 5U FF
ANCHOR "T" METRO 4E
BRK PLAY MATE
PROSTOCK HUGO 7052T
FGAF BARBARELLA 839L
SOUTH SEVEN RAZZMATAZZ 7R
ANCHOR D RUBY 233U

CE	BW	WW	YW	MILK	MCE	MWWT
10	3	66.2	106.7	34.8	5	67.9

◆ **HORNED FULL BLOOD**
◆ 1219254

◆ **ZDS 255D**
◆ **DECEMBER 31, 2016**



Anchor D Outlook

REF SIRES



WHEATLAND Affinity 8196F

ref

SIRE

WHEATLAND

Affinity

8196F

WS PILGRIM H182U

CCLT ALLIANCE 91C

BROOKS SHINIA 1A

GOLDEN OPPORTUNITYHR R851

WHEATLAND LADY 913W

WHEATLAND LADY 751 T

KN CNS DREAM ON L186

WS MARLA 276M

BB BARACK 1017T

BROOKS RED HOT Y17

KN SS GOLD MINE L42

HS REFLECTIONS J34

WHEATLAND 540R "PTO"

WHEATLAND LADY 533R

CE	BW	WW	YW	MILK	MCE	MWWT
10.7	1.1	60.7	74.4	27.8	3.3	58.2

♦ POLLED PUREBRED

♦ PG1252370

♦ LER 8196F

♦ APRIL 16, 2018



KWA Slider 196H

ref

SIRE

KWA

Slider 196H

HSF HIGH ROLLER 12T

CDI VEGAS 26X

CDI MS CROCKET 110U

HART STATE OF WAR 056C

CROWE GOLDIE 3F \ HP-HOP CC-RC

CROWE GOLDIE 3C \ HP-HOP CC-RC

TJ 57J THE GAMBLER

HSF RED FORTUNES SIS 33

LBR CROCKET R81

CDI MISS SHEAR FORCE 14N

WELSH'S WARSAW 312Z

HART MISS 102A

MR CCF VISION

CROWE MISS GOLD RUSH 9Z

CE	BW	WW	YW	MILK	MCE	MWWT
19.6	-3.2	76.9	117.9	30.9	9.6	69.4

♦ POLLED PUREBRED

♦ BPG1339770

♦ KWA 196H

♦ FEBRUARY 3, 2020



WHEATLAND Monument 28H

ref

SIRE

WHEATLAND

Monument

28H

WS ALL ABOARD B80

WS EPIC E152

WS MAJESTIC Z133

WHEATLAND BULL 298Z

WHEATLAND LADY 7002E

WHEATLAND LADY 568C

WS ALL-AROUND Z35

WS LITTLE SISTER W37

GW RED COAT 099TS

WS MOTHER LODE W21

REMINGTON LOCK N LOAD 54U

WHEATLAND LADY 902J

WHEATLAND BULL 124Y

WHEATLAND LADY 2138Z

CE	BW	WW	YW	MILK	MCE	MWWT
8.5	0.7	90.7	141.7	26	3.2	71.4

♦ POLLED PUREBRED

♦ BPG1346532

♦ LER 28H

♦ JANUARY 23, 2020

TERMS & CONDITIONS

TERMS

The terms of the sale are cash or cheque, payable at par at the sale location. The right of property shall not pass until after settlement has been made; no invoicing on buyers in attendance unless previous arrangements have been made. Every animal sells to the highest bidder and in cases of disputes, the auctioneer's decision will be final. Announcements from the auction block will take precedence over the printed matter in the catalogue. Current exchange rates will be announced sale day. All monies are in Canadian funds.

CERTIFICATE OF REGISTRATION

Each animal will carry papers issued by the Canadian Simmental Association. A certificate of registry duly transferred will be furnished to the buyer for each animal after payment has been made.

PEDIGREE ESTIMATES

Pedigree Estimates (PE) are created on the projected mating of the animal's sire and dam based on averages of the two, creating estimated values that do not hold the same accuracy of actual EPDs issued from the association and should be used as such.

HEALTH

All animals in the sale have met all necessary health requirements.

GUARANTEE

Each animal becomes the purchaser's risk immediately after the animal is sold. All animals in this sale will be sold under the terms and guarantees set forth by the Canadian Simmental Association with regards to health, freedom from defects and from both reproductive and specific genetic unsoundness.

PREGNANCY INFORMATION

All serviceable age females have been pregnancy examined by an accredited veterinarian, giving an estimated length of gestation. This estimated gestation period shall be used only as a guideline to calving and is not a guarantee of actual service.

LIABILITIES

All persons attend the sale at their own risk. The seller, facility owner and sale manager assume no liability, legal or otherwise, for any accidents that occur. It is understood that T Bar C Cattle Co. (2013) Ltd. is acting only as a medium between buyer and seller and is not responsible for any failure on the part of either party to live up to his obligations. Neither does T Bar C Cattle Co. (2013) Ltd. assume any financial obligations to collect or enforce collection of any monies between parties and any legal action that may, in exceptional cases, be taken must be between the buyer and the seller. T Bar C Cattle Co. (2013) Ltd. assumes no responsibility for any credit extended by the seller to the buyer. The buyer must look to the seller for fulfillment of all guarantees and representations made hereunder.

DELIVERY

Assistance will be given in getting your purchases home. Each animal becomes the risk of the purchaser as soon as sold.

PHONE, MAIL, WIRE BIDS

Bidders unable to attend the sale may phone, wire or mail their bids and instructions to the sale manager, auctioneer or special representatives. Bids must be received in sufficient time prior to the sale.

INSURANCE

We strongly recommend that insurance is purchased for full value.

ERRORS

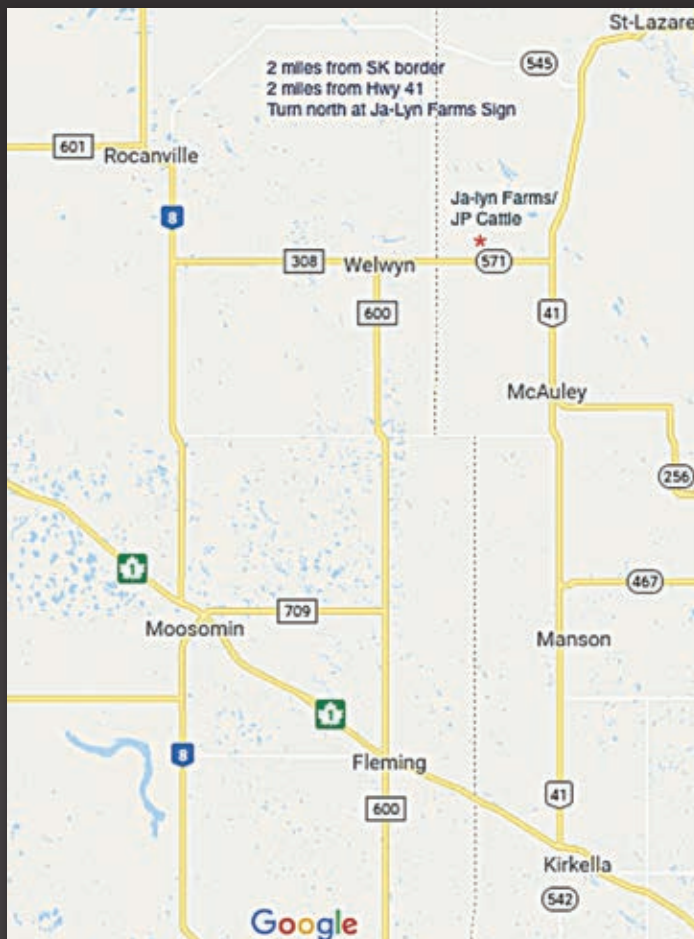
All announcements at sale time, written or oral, supersede any written material in the catalogue.

DELIVERY

Shipping assistance will be given in making shipment after sale but sale management or seller assumes no risk. Bonchuk Farms will assist in arranging trucking to central points across Canada. All costs associated with shipping will be the responsibility of the new owner.

HERD HEALTH

All bred cattle received Express 5 before breeding and Total Herd has been on the Express program for over 10 years, making the ranch BVD-free. Bred heifers also received black leg vaccine before breeding. All pregnant cattle have their first shot of Scour-Bos vaccine and treated with Ivomec.



DIRECTIONS:

- 2 miles from SK border
- 2 miles from Hwy 41
- Turn North at Ja-Lyn Farms sign

Return Undeliverable Canadian Addresses To:
T Bar C Cattle Co. Ltd.
Box 2330, Warman, Saskatchewan S0K 4S0



CREATED BY

