



THE BEST OF THE BREEDS

twenty first annual BULL SALE

MARCH 23, 2025 | 1:30 PM | HEARTLAND LIVESTOCK SERVICES, YORKTON, SK

Red Angus • Charolais • Simmental • Gelbvieh • Black Angus

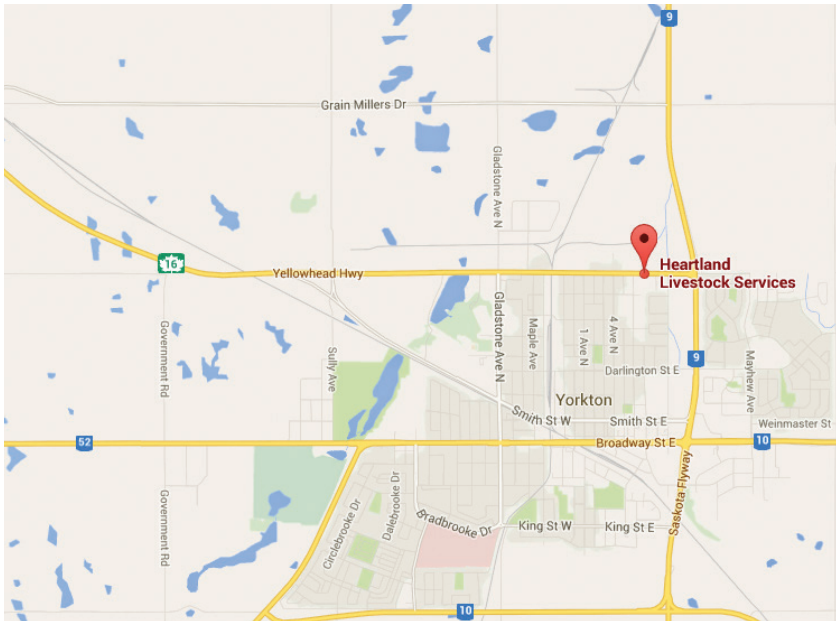
Twin Heritage Farms • Dogpatch Acres • Harcourt Charolais • Forden Fairview Farms Ltd • Goodview Gelbvieh • Black Ridge Angus Farms

THE BEST OF THE BREEDS

twenty-first annual

BULL SALE

MARCH 23, 2025 1:30PM || **HEARTLAND LIVESTOCK SERVICES YORKTON, SK**



Internet Bidding Available



For more information call:

Mark Shologan 780-699-5082 or Purebred Team 780-991-3025

PROUDLY PRESENTED BY:

Twin Heritage Farms The Kereluiks

Box 278
Sheho, SK S0A 3T0
Allan & Ann
Mitch: 306-272-7501
Michael: 306-220-1976
twin.heritage@sasktel.net
www.twinheritage.com

Dogpatch Acres Michael & Annette, Evan & Carley Zentner

Box 44
Leroy, SK S0K 2P0
Cell: 306-287-8180
Fax: 306-287-3199
mgzentner@gmail.com
www.dogpatchacres.com

Harcourt Charolais Doug, Tammy, Jennifer & Justin Harcourt

Box 637
Quill Lake, SK S0A 3E0
Doug's Cell: 306-383-7068
Justin's Cell: 306-383-7168
d.t.harcourt@sasktel.net
www.harcourtcharolais.com

Forden Fairview Farm Lyle & Leanne Forden Ken & Twila Forden

Box 477
Punnichy, SK S0A 3C0
Lyle Cell: 306-290-5953
forden@sasktel.net

Goodview Gelbvieh Blair & Lorie Bentz Courtney, Logan & Gunnar Kelsey & Blake

Box 430
Punnichy, SK S0A 3C0
Cell: 306-746-8037
blbentz@sasktel.net

Black Ridge Angus Farm John & Bonnie Moleski Steve & Violet Moleski

Box 114
Dysart, SK S0G 1H0
Steve P/F: 306-432-4417
John: C: 306-331-7787
blackridge.angus@sasktel.net
"Raising Registered Angus Since 1957"

BULLS ON OFFER

16 Red Angus
35 Red & White Charolais
35 Red, Black & Fleckvieh Simmental
20 Red & Black Gelbvieh
14 Yearling Black Angus

- All bulls are semen checked and veterinary inspected.
- Semen tests, all scrotals and weights will be available sale day.
- Half down on sale day with a May 1, 2025 post-dated cheque for the balance.
- Insurance available sale day.

SIGHT UNSEEN PURCHASE PROGRAM: For those who cannot attend, we offer a Sight Unseen Purchase Program. Call us with your needs (birth weight, frame, weight, etc.) and we will recommend suitable bulls. We will deliver the bulls to you with a satisfaction guarantee. Your order will be handled in strict confidence. Call the owners, T Bar or any of the sale staff.

RIGHT TO DRAW SEMEN: In the event that we would like semen on any of the bulls selling, we reserve the right to draw semen at our expense and buyers convenience for in-herd use only.

DELIVERY: We will assist in making transportation arrangements outside MB and SK. All costs are the responsibility of the buyer. You may be asked to take your bull early if the truck is in your area. Each animal becomes the risk of the purchaser as soon as sold.

"Haul your own bull" \$100.00 OFF PER BULL

If you bring your own trailer and take your bull home, receive a \$100 credit off your purchase.

OR PAY \$100.00 upfront sale day and we will take the yearling bulls home, feed and deliver them by May 1, 2025.

Payable at the time of settlement. All bulls to be taken home and boarded must be insured.

NOTE: All two year old bulls must go home with buyer after the sale unless prior arrangements have been made with the breeder.

VIDEO SALE

Be sure to evaluate the bulls you are interested in prior to the sale as they will not be run through the ring.

SALE STAFF

Chris Poley, Auctioneer	306-220-5006
Shane Michelson <i>T Bar C Cattle Co. Ltd.</i>	403-363-9973
Ben Wright <i>T Bar C Cattle Co. Ltd.</i>	519-374-3335
Levi Rimke <i>T Bar C Cattle Co. Ltd.</i>	204-851-4515
Helge By <i>Charolais Banner</i>	306-536-4261

SALE DAY PHONES

Heartland Livestock Services: Office: 306-783-9437

SALE MANAGEMENT

T Bar C Cattle Co. Ltd. Office: 306-933-4200
523 Main Street, Box 2330
Warman, SK S0K 4S0
E-mail: info@tbarc.com Visit www.tbarc.com

INSURANCE

Alameda Agencies 306-483-7311

Please join us for lunch and refreshments prior to the sale.

SALE STARTS AT 1:30 PM
Please bring this catalogue with you sale day.

FROM THE DESK AT T BAR C

Welcome to the "Best of the Breeds" Annual Bull sale. In this, the 21st year for this multi-breed event, "Best of the Breeds" has grown to be the largest spring event, offering five beef breeds. Twenty years ago, we established this event with the late Merv Schmidt, Belmont Charolais, who "didn't like halter breaking and occupying my spring with pedaling bulls." The sale was held in the Leross Auction mart and was relatively successful averaging over \$1900. In today's terms that would be the price of a low average feeder calf. Nevertheless, that small Auction Mart was jammed to the rafters and all the visitors enjoyed the perogies and cold coffee... a menu that was set for the next two decades.

Best of the Breeds gradually expanded in breeds, quality, numbers and success. Over the years many breeder bulls have been discovered at this event and selected by purebred breeders in Canada and the United States. More importantly, these five breeding operations have supplied over twenty years of bulls for the hundreds of commercial farmers and ranchers who annually fulfil their breeding requirements in one stop, on one day and have them conveniently delivered in time for service. The group of breeders who present this solid set of bulls are constantly searching for new genetics for their herds and the herds of their loyal customers... they are always concerned about your bottom line with value-added product. The diversity in type and genetics, offers endless opportunity for all types of selections and all type of budgets.

The Charolais are represented by Harcourt and Dog Patch Charolais, Forden Fairview Farm present the Sims. Black Ridge has the Black Angus, Twin Heritage present their Red Angus and Goodview, supply the Gelbvieh. Whether you are looking for a white, red or black bull, a power bull for cows and big pastures or a bull for heifers, they have you covered with thick high-quality prospects in their respective breed.

Feel free to visit any of the contributors and preview their bulls and if you get a chance, see the mothers. Don't hesitate to give the consignors a call and visit with them about their offering. Plan to be with us on Sunday, March 23, 2025, for the 21st edition at Heartland Livestock, Yorkton... it will be well worth the trip.

If we, at T Bar C may be of any assistance prior to or sale day, do not hesitate to call any of our team and we will be pleased to assist in a professional and confidential manner.

CHRIS POLEY



Chris Poley
306-220-5006



Shane Michelson
403-363-9973



Ben Wright
519-374-3335



Levi Rimke
204-851-4515

TWIN HERITAGE FARMS

Welcome to another bull sale season and thank you for your interest and support of our program throughout the years. The bulls that we have on offer are backed by proven genetics and a cow herd built with an emphasis on fertility, sound udder structure, and good feet. We are extremely proud of the herd that we've put together over the last 25 years and are grateful to have the good folks at Wilbar Cattle Company purchase our base cow herd this past fall. Thank you to Bryan, Tracey, Kylie, and Owen Willms for appreciating what we were working towards.

As with every year, we continue to pail feed a balanced bull developer ration to ensure responsible development and longevity with access to free choice hay, mineral, and water. The weights provided are actuals with WW taken on September 15 and YW taken on February 8.

While we have sold the cow herd, we stand behind these bulls and trust they will get the job done as they always do. If you have time, please stop by the farm in advance or give one of us a call with any questions. As a thank you to those who purchase a bull from us, we will top up the \$100.00 "Haul your Own Bull" credit to \$250.00 if you take your Twin Heritage bull home on sale day. We encourage you to check out our website at www.twinheritage.com for viewing of the bull sale videos. Also, head over to DLMS.com if you have not already signed up to view and bid online.

The Herd's
"Add a Touch of Heritage to your Herd"

RED ANGUS BREED AVERAGES

EPDS	CE	BW	WW	YW	MCE	MK
	3.4	2	55	98	13	24



1

RED LONE STONE **FLEX** 117K

2261996 LNK 117K 1/15/2022

SIRE

DAM

RED MRLA FLEX 49Z
RED LWNBRG FLEX 79B
RED TED CHATEAU 6U

RED XO CROWFOOT REBEL 2422Z
RED LONE STONE ROSETTE 66F
RED LONE STONE ROSETTE 53Z

PERF	BW	WWT	YWT
	80 lbs	712 lbs	1040 lbs

EPDS	CE	BW	WW	YW	MCE	MILK
	4	2.4	49	82	13	24

- We used this bull on our primary cow base as a 2 year old and he bred incredibly well; aggressive breeder and got the job done the first time around.
- Smooth made and wide based bull with depth of rib and well muscled throughout.
- Has only been developed on hay since pulling from the breeding pen in June.
- Selling 100% Possession and Interest.
- Parent Verified.

REFERENCES



RED WILBAR HELIX 635H



RED PIE SPECIALIST 430 (Sire)



RED WILBAR BRNDINA 638S (Dam)

We are extremely impressed with how easy the Helix calves were born and how the bulls have developed. The sons have calving ease appeal with moderate BW, length, and style. Helix's exceptional dam has been a long-time herd matron and donor cow at Wilbar. The Helix 635H daughters impress with strong maternal traits and tidy even udders. These sons are noted for their balance, length of body, testicle development, and calving ease appeal.

RED ANGUS



2

2

RED TWIN HERITAGE **HELIX** 2M

2402514 KTH 2M 1/4/2024

SIRE

DAM

RED PIE SPECIALIST 430
RED WILBAR HELIX 635H
RED WILBAR BRNDINA 638S

RED TER-RON TRIGGER 80B
RED TWIN HERITAGE RAVEN 15F
RED TWIN HERITAGE RAVEN 16B

PERF	BW	WWT	YWT
	77 lbs	680 lbs	1128 lbs

EPDS	CE	BW	WW	YW	MCE	MILK
	7	-1.9	33	58	6	26

- Deep wide based bull with a sharp profile.
- Dark red hair coat and length of body.
- Dam is a Trigger daughter tracing back to the never miss 54L cow; maternal consistency throughout.

3

RED TWIN HERITAGE *HELIX* 6M

2402497 MTH 6M 1/10/2024

SIRE**DAM**

RED PIE SPECIALIST 430
 RED WILBAR HELIX 635H
 RED WILBAR BRNDINA 638S

RED LAZY MC KINGMAN 16W
 RED TER-RON RACHEL 42Z
 RED TER-RON RACHEL 815R

PERF	BW		WWT		YWT	
	76 lbs		681 lbs		1160 lbs	
EPDS	CE	BW	WW	YW	MCE	MILK
	7	-1.9	40	69	4	26

- This bull has the pedigree to be a female maker!
- Smooth fronted and long with a big dark foot.
- Rachel 42Z is as consistent as they come with an udder that is hard to beat even at 13 years of age. I bought her as a heifer from the good folks at Ter-Ron Farms and she has been bullet proof raising several herd bulls.



4

RED TWIN HERITAGE *HELIX* 16M

2402498 MTH 16M 1/15/2024

SIRE**DAM**

RED PIE SPECIALIST 430
 RED WILBAR HELIX 635H
 RED WILBAR BRNDINA 638S

RED ANDRAS NEW DIRECTION R240
 RED TWIN HERITAGE DANCER 14H
 RED TWIN HERITAGE DANCER 58E

PERF	BW		WWT		YWT	
	72 lbs		679 lbs		1177 lbs	
EPDS	CE	BW	WW	YW	MCE	MILK
	9	-2.2	39	67	8	28

- Heifer bull recommended.
- Smooth fronted with style and presence.
- Moderate framed with a strong top, hip, depth of body, and dark red foot.
- Dam is a tidy uddered Andras New Direction daughter.



5

RED TWIN HERITAGE *HELIX* 24M

2402501 MTH 24M 1/21/2024

SIRE**DAM**

RED PIE SPECIALIST 430
 RED WILBAR HELIX 635H
 RED WILBAR BRNDINA 638S

RED BROWN JYJ REDEMPTION Y1334
 RED TWIN HERITAGE FANNDORA 68D
 RED MAR MAC FANNDORA 70B

PERF	BW		WWT		YWT	
	77 lbs		678 lbs		1120 lbs	
EPDS	CE	BW	WW	YW	MCE	MILK
	8	-1.8	43	72	6	25

- Long, straight, and smooth.
- Most resembles his sire as a yearling.
- Moderate birthweight without compromising performance and should work well on cows and heifers.
- Dam is a beautiful uddered Redemption daughter that has been a consistent producer.





6

RED TWIN HERITAGE HELIX 26M

2402502 MTH 26M 1/21/2024

SIRE

RED PIE SPECIALIST 430
RED WILBAR HELIX 635H
RED WILBAR BRNDINA 638S

DAM

RED TER-RON TRIGGER 80B
RED TWIN HERITAGE BLOCKANNA 3E
RED SSS BLOCKANNA 671X

PERF	BW		WWT		YWT	
	78 lbs		700 lbs		1179 lbs	
EPDS	CE	BW	WW	YW	MCE	MILK
	7	-1.1	39	69	6	28

- Wide topped with good spring of rib.
- Would try him on a few larger framed heifers before going all in.
- Dam is a soggy deep barrelled Trigger daughter tracing back to the high selling Blockanna 671X heifer we purchased from SSS Red Angus.

7

RED TWIN HERITAGE HELIX 33M

2402503 MTH 33M 1/24/2024

SIRE

RED PIE SPECIALIST 430
RED WILBAR HELIX 635H
RED WILBAR BRNDINA 638S

DAM

RED TER-RON TRIGGER 80B
RED TWIN HERITAGE FANNDORA 67G
RED TWIN HERITAGE FANNDORA 68D

PERF	BW		WWT		YWT	
	81 lbs		744 lbs		1215 lbs	
EPDS	CE	BW	WW	YW	MCE	MILK
	6	-1.2	46	81	5	26

- Heifer bull recommended.
- Long smooth fronted moderate framed bull with an exceptional dark foot.
- Dam is a moderate sized front pasture kind of cow with an impressive tidy udder.
- Number 1 indexing bull of the pen after weaning.

8

RED TWIN HERITAGE HELIX 43M

2402516 KTH 43M 1/30/2024

SIRE

RED PIE SPECIALIST 430
RED WILBAR HELIX 635H
RED WILBAR BRNDINA 638S

DAM

RED TER-RON TRIGGER 80B
RED TWIN HERITAGE RAVEN 71F
RED TWIN HERITAGE RAVEN 35C

PERF	BW		WWT		YWT	
	72 lbs		610 lbs		1068 lbs	
EPDS	CE	BW	WW	YW	MCE	MILK
	7	-1.7	34	61	5	27

- Moderate framed smooth fronted bull that can be used on larger framed heifers.
- Long and balanced with a good red foot.
- Dam is a tidy uddered Trigger daughter from the esteemed Raven cow family.

9

RED TWIN HERITAGE HELIX 50M

2402518 KTH 50M 2/3/2024

SIRE

RED PIE SPECIALIST 430
RED WILBAR HELIX 635H
RED WILBAR BRNDINA 638S

DAM

RED JLL WIDESPREAD 92C
RED TWIN HERITAGE DANCER 58E
RED TWIN HERITAGE DANCER 45C

PERF	BW		WWT		YWT	
	68 lbs		695 lbs		1126 lbs	
EPDS	CE	BW	WW	YW	MCE	MILK
	8	-2	40	66	9	29



- Heifer bull recommended.
- Smooth fronted long bull with a strong dark foot.
- Great profiling bull with a beautiful hair coat.
- Dam traces back to the Princess cow family that has worked so well for the good folks at JLL.

REFERENCES



RED TER-RON JAILBIRD 28J



RED TER-RON SHOWDOWN 9G (Sire)



RED TER-RON GOLDIE 840T (Paternal Granddam)

We bought Jailbird 28J for dedicated use in our heifer pen. He calved extremely well on heifers, and we like the consistency we are seeing with a bit of an outcross genetic base. Unfortunately, we no longer have Jailbird 28J, but his group of sons are noted for the style, moderation, and balance with moderate birthweights.



10 **RED TWIN HERITAGE JAILBIRD 23L**

2305868 MTH 23L 1/17/2023

SIRE

DAM

RED TER-RON SHOWDOWN 9G RED LAZY MC DETOUR 161D
RED TER-RON JAILBIRD 28J RED TWIN HERITAGE NAVANNA 22H
TER-RON DIAMOND MIST 126E RED TWIN HERITAGE NAVANNA 32Z

PERF	BW		WWT		YWT	
	67 lbs		620 lbs		1086 lbs	
EPDS	CE	BW	WW	YW	MCE	MILK
	8	-1.4	33	57	7	22

- Heifer bull recommended.
- Moderate well balanced dark red bull with a big red foot.
- Dam is a beautiful uddered Detour daughter.
- Both of these 2 year old Jailbird sons have not seen any grain this past year and have only been developed on hay.



11 **RED TWIN HERITAGE JAILBIRD 55L**

2345815 MTH 55L 2/9/2023

SIRE

DAM

RED TER-RON SHOWDOWN 9G RED LAZY MC DETOUR 161D
RED TER-RON JAILBIRD 28J RED TWIN HERITAGE DUCHESS 55H
TER-RON DIAMOND MIST 126E RED TWIN HERITAGE DUCHESS 34E

PERF	BW		WWT		YWT	
	88 lbs		535 lbs		959 lbs	
EPDS	CE	BW	WW	YW	MCE	MILK
	0	2.2	29	54	4	21

- We used this bull on our heifers last spring.
- Moderate framed smooth fronted balanced bull with an impeccable dark foot.
- His dam was a tidy uddered Detour daughter that traced back to the Duchess 85Y herd matron.
- 40.5 cm scrotal on a heifer bull that will cover some ground.
- Parent Verified.



RED ANGUS



12 **RED TWIN HERITAGE JAILBIRD 23M**
 2402499 MTH 23M 1/20/2024
SIRE RED TER-RON SHOWDOWN 9G
DAM RED WILBAR HELIX 635H
 RED TER-RON JAILBIRD 28J
 RED TWIN HERITAGE LAKOTA 24K
 TER-RON DIAMOND MIST 126E
 RED TWIN HERITAGE LAKOTA 21H

PERF	BW		WWT		YWT	
	84 lbs		641 lbs		1076 lbs	
EPDS	CE	BW	WW	YW	MCE	MILK
	-4	1.8	37	63	-1	25

- Moderate framed bull with some length that indexed near the top of the pen when weaned.
- Smooth fronted and even throughout with a dark foot.
- Dam is a nice uddered Helix daughter stemming from a long line of highly maternal lineage.



13 **RED TWIN HERITAGE JAILBIRD 53M**
 2402504 MTH 53M 2/7/2024
SIRE RED TER-RON SHOWDOWN 9G
DAM RED ANDRAS NEW DIRECTION R240
 RED TER-RON JAILBIRD 28J
 RED TWIN HERITAGE RAVEN 18H
 TER-RON DIAMOND MIST 126E
 RED TWIN HERITAGE RAVEN 70Y

PERF	BW		WWT		YWT	
	88 lbs		613 lbs		1075 lbs	
EPDS	CE	BW	WW	YW	MCE	MILK
	-1	1.9	32	58	2	23

- This bull will catch your eye; wide based and loosely made.
- Exceptional hip on a moderate frame with a dark foot.
- Dam is a young Andras New Direction daughter and appears to be well on her way to raising the good ones!



14 **RED TWIN HERITAGE JAILBIRD 55M**
 2402519 KTH 55M 2/8/2024
SIRE RED TER-RON SHOWDOWN 9G
DAM RED SSS GAME TIME 170Y
 RED TER-RON JAILBIRD 28J
 RED TWIN HERITAGE RAVEN 16B
 TER-RON DIAMOND MIST 126E
 RED TWIN HERITAGE RAVEN 54L

PERF	BW		WWT		YWT	
	86 lbs		641 lbs		1036 lbs	
EPDS	CE	BW	WW	YW	MCE	MILK
	-2	2	32	54	1	22

- Smooth fronted moderate framed bull.
- Has the make to work on some larger framed heifers.
- Yet another Raven cow family dam that stems back to the 54L cow. The number of daughters that we had retained and active producers is a true testament to the maternal strength of this cow family.



- Moderate well balanced dark red bull with a big red foot.
- Smooth fronted and strong topped with a good quarter.
- Dam traces back to the Zama Pine 123'03 sire that was known for his top producing and exceptional footed females.



15

15

RED TWIN HERITAGE **VISION** 36M

APPLIED FOR KTH 36M 1/28/2024

SIRE

DAM

RED U2 RECKLESS 306F
RED ALLISON VISIONARY 190J
RED ALLISON LAKIMA 62F

RED TER-RON TRIGGER 80B
RED TWIN HERITAGE CHER 49D
RED TWIN HERITAGE CHER 54A

PERF	BW		WWT		YWT	
	88 lbs		642 lbs		1042 lbs	
PE EPDS	CE	BW	WW	YW	MCE	MILK
	-10.0	5.3	38	68	-3.0	21

16

RED TWIN HERITAGE **VISION** 49M

APPLIED FOR KTH 49M 2/3/2024

SIRE

DAM

RED U2 RECKLESS 306F
RED ALLISON VISIONARY 190J
RED ALLISON LAKIMA 62F

RED TWIN HERITAGE SOLDIER 41Z
RED TWIN HERITAGE RAVEN 16C
RED TWIN HERITAGE RAVEN 50A

PERF	BW		WWT		YWT	
	82 lbs		690 lbs		1122 lbs	
PE EPDS	CE	BW	WW	YW	MCE	MILK
	-8.5	4.2	37	62	-2.0	23

- Sharp profile, moderate frame, and a dark foot.
- Good quartered and smooth throughout.
- Dam is a grand daughter of the Raven 54L herd matron who has had many retained daughters in the herd.



16

RED ANGUS

DOGPATCH CHAROLAIS



Welcome everyone to the 21st edition of the Best of the Breeds sale. We would like to take this opportunity to thank all our past and present buyers and bidders for having faith in our breeding program.

This past year has seen record prices in the beef industry, which is long overdue. Cull prices and market calf prices are through the roof and it appears that the trend is here for the foreseeable future.

This year we are proud to offer a consistent set of bulls that reflect what we are striving to produce. Structurally sound bulls with moderate frames boasting lots of volume, depth and red meat. Hair and a good disposition are a must, along with calving ability and performance.

Not every bull calf makes it for the sale. Culling throughout the season allows us to bring only the top end calves to the sale. So you can be confident in your purchase of a quality bull.

We don't sell out our pens. We always hold back some bulls for our customers in case they experience a wreck throughout the summer. So not to leave anyone high and dry, we will have a backup bull on hand. The 2 year olds we are bringing were ones purposely held back as insurance bulls and fortunately were not required.

In addition to our senior herdsire, we used an array of AI sires that offer different pedigrees to choose from, but all fitting into our breeding parameters. I invite you to check over our offering and call if you have any questions or drop by the farm to view the bulls and their mothers. Check out the catalog and videos at www.dogpatchacres.com. Hope to see you on sale day.

CHECK OUT OUR VIDEOS

www.dogpatchacres.com

Check out the catalog and videos at
WWW.DOGPATCHACRES.COM

Michael, Annette, Evan and Carley
Zentner

CHAROLAIS BREED AVERAGES

EPDS	CE	BW	WW	YW	MK	MTL
	4.8	0.4	59.5	109.6	22.3	52



REF

WGD RUGER 8J

POLLED PEMC816608 WGD 8J 1/4/2021

SIRE

DAM

LT JOURNEY 5208 PLD
LT RANSOM 8644
LT SHEILA 337 PLD

JIL THUNDER ROLL 69Z
WGD THE CRUSH 14D
JIL LASSY 141X

PERF	BW		WW		YW	
	101 lbs		870 lbs		1587 lbs	
EPDS	CE	BW	WW	YW	MK	MTL
	-2.5	3.1	74	125	13	50

We chose to use WGD Ruger 8J extensively in our AI program. He stamps his calves with the deep sides and thick tops and great structure. Calvability, hair, attitude are just a few of his many attributes.



REF

SOS MADISON 104G

POLLED PFC806584 SOS 104G 3/10/2019

SIRE

DAM

WINN MANS CHAVEZ 826Y
SOS HOME GROWN 15C
SOS SPRINGSIDE'S ADELE167

SPARROWS LANDMARK 963W
MXS MADISON 509C
MXS MADISON 732T

PERF	BW			WW		YW	
	91 lbs			-		-	
EPDS	CE	BW	WW	YW	MK	MTL	
	-4.5	1.7	71	120	26	62	

Madison is our high dollar flush cow we purchased from the Springside Dispersal. She has a perfect udder and feet. Very feminine in her makeup, but produces power as evident in her three embryo sons.

17

DOGPATCH MARVEL 44M

POLLED MC897149 MGZ 44M 1/15/2024

SIRE**DAM**LT RANSOM 8644
WGD RUGER 8JSOS HOME GROWN 15C
SOS MADISON 104G

WGD THE CRUSH 14D

MXS MADISON 509C

PERF**BW****SEPT WT****FEB WT**

108 lbs

856 lbs

1330 lbs

EPDS**CE****BW****WW****YW****MK****MTL**

-3.9

2.5

72

126

19

55



44M & Recip Dam

The first of the embryo calves off our donor cow. Whoever put the embryo in must have put it in wrong because he wanted to come out tail first! Once we got him out he never looked back again! A real powerhouse calf that will breed the larger framed cows and reward you with outstanding performance. Style, performance, and quality throughout in a slightly bigger package. Recommended for mature cows. Top 10% weaning weight, top 25 % yearling weight.



18

DOGPATCH MAGNITUDE 46M

POLLED MC897670 MGZ 46M 1/17/2024

SIRE**DAM**LT RANSOM 8644
WGD RUGER 8JSOS HOME GROWN 15C
SOS MADISON 104G

WGD THE CRUSH 14D

MXS MADISON 509C

PERF**BW****SEPT WT****FEB WT**

106 lbs

806 lbs

1320 lbs

EPDS**CE****BW****WW****YW****MK****MTL**

-3.9

2.5

72

126

19

55

Our second embryo calf came the right way around and wanted to show he has the same style and jam as his brothers. Deep sided and thick topped these Ruger calves seem to be stamped out with the same pattern. Sound structure, good footed, great haired and lots of substance to them. Magnitude is a result of combining two top genetic profiles into one package. Recommended for mature cows. Top 10% weaning weight, top 25% yearling weight.



19

DOGPATCH MONARCH 68M

POLLED MC897671 MGZ 68M 1/15/24

SIRE**DAM**LT RANSOM 8644
WGD RUGER 8JSOS HOME GROWN 15C
SOS MADISON 104G

WGD THE CRUSH 14D

MXS MADISON 509C

PERF**BW****SEPT WT****FEB WT**

91 lbs

840 lbs

1355 lbs

EPDS**CE****BW****WW****YW****MK****MTL**

-3.9

2.5

72

126

19

55

Our third embryo calf follows his brothers to a tee! Same parents, same genetic make up, same performance based pedigree. All three have the nice hair coats that come with the genes, and the same sound structure and growth. Monarch comes with a lower birth weight but still provides the same punch, and quality as his flush mates. A very good cross that we are proud to offer. Top 10% weaning weight, top 25% yearling weight.



CHAROLAIS



Dam - Dogpatch Lily 50F

We regret that this summer we lost Lily 50F. She consistently produced top end calves and Merger is a testament to her. Cow power is evident in this calf and combined with the growth and muscling ability of WDG Ruger 8J shows the performance in the pedigree. Considering he was orphaned this summer Merger still weaned off very well and really turned it on ever since. His overall length and tremendous depth contribute to his outstanding growth. A nice birth weight out of a mature powerhouse.

20 DOGPATCH **MERGER** 32M

HOMO POLLED MC897142 MGZ 32M 1/19/2024

SIRE

DAM

LT RANSOM 8644 HRJ BULLETPROOF 411B
WGD RUGER 8J DOGPATCH LILY 50F
WGD THE CRUSH 14D DOGPATCH LILY 61X

PERF	BW		SEPT WT		FEB WT	
	91 lbs		790 lbs		1330 lbs	
EPDS	CE	BW	WW	YW	MK	MTL
	-1.3	2.4	62	108	16	47

21 DOGPATCH **MIDAS** 40M

POLLED MC897144 MGZ 40M 1/17/2024

SIRE

DAM

LT RANSOM 8644 JWX DOWNTOWN 7C
WGD RUGER 8J MXS REBA 758E
WGD THE CRUSH 14D MXS REBA 305A

PERF	BW		SEPT WT		FEB WT	
	92 lbs		770 lbs		1300 lbs	
EPDS	CE	BW	WW	YW	MK	MTL
	-0.1	2.9	72	127	19	54



Dam - MXS Reba 758E

Midas checks a lot of boxes on anyone's list. With an attractive birth weight and ample growth, this long sided straight topped young sire will pass on the thickness that comes with the Ruger bloodlines resulting in the heavy weight calves that have lots of hair and pay weight come fall. Maternal brother was the high seller in last year's sale. Top 15 % weaning weight, top 20% yearling weight.

Covered in curly hair, this moderate framed sire boasts a large middle with plenty of spring of rib and nice clean sheath. A strong straight topped Ruger son with polled performance. Good footed and sound. Mosaic will add thickness through the middle and a great hair coat to your calves that will have the buyers dig a little deeper come sale time.



22

DOGPATCH **MOSAIC** 101M

HOMO POLLED MC897168 MGZ 101M 1/18/2024

SIRE

DAM

LT RANSOM 8644
WGD RUGER 8J
WGD THE CRUSH 14D

CSS SIR GRIDMAKER 2W
DOGPATCH MIKEALA 101B
RPJ MIKEALA 873U

PERF

BW

SEPT WT

FEB WT

96 lbs

806 lbs

1295 lbs

EPDS

CE

BW

WW

YW

MK

MTL

1

2.1

62

107

16

47

23

DOGPATCH **MAINLINE** 29M

HOMO POLLED MC897137 MGZ 29M 1/8/2024

SIRE

DAM

LT RANSOM 8644
WGD RUGER 8J
WGD THE CRUSH 14D

WC BIG BEN 9036
DOGPATCH JEWEL 17F
DOGPATCH JEWEL 17C

PERF

BW

SEPT WT

FEB WT

94 lbs

800 lbs

1275 lbs

EPDS

CE

BW

WW

YW

MK

MTL

2.3

1.7

68

118

15

49

A stylish moderate framed bull that has as much middle and depth as any of the bulls in the pen. His overall volume gives him the ability to convert feed into pounds of beef, which is evident in his awesome weaning and yearling weights. Use mainline to add depth and volume to your calves which will result in heavier calves come sale time. Top 25% weaning weight, top 35% yearling weight.



CHAROLAIS



Dam - Dogpatch Katelin 73Z

A moderate framed bull with a ton of long curly hair. This smooth made bull will sire calves that slip out easily and hit the ground running. A well developed frame and sound running gear will provide years of hassle free service. A nice clean sheath also helps to prevent issues in pastures where brush and debris may be a problem. An all around bull with a gentle disposition.

24 DOGPATCH MAESTRO 73M

HOMO POLLED MC897154 MGZ 73M 1/16/2024

SIRE

DAM

LT RANSOM 8644 HBC SHOWDOWN 932W
WGD RUGER 8J DOGPATCH KATELIN 73Z
WGD THE CRUSH 14D BAR E W KATELIN 73P

PERF	BW		SEPT WT		FEB WT	
	92 lbs		814 lbs		1265 lbs	
EPDS	CE	BW	WW	YW	MK	MTL
	4	1.4	59	109	15	44

25 DOGPATCH MOTIVE 78M

HOMO POLLED MC897155 MGZ 78M 1/16/2024

SIRE

DAM

LT RANSOM 8644 CJC SYMBOL B1067P
WGD RUGER 8J DOGPATCH AGATHA 86E
WGD THE CRUSH 14D DOGPATCH AGATHA 86A

PERF	BW		SEPT WT		FEB WT	
	90 lbs		696 lbs		1225 lbs	
EPDS	CE	BW	WW	YW	MK	MTL
	-0.2	2.5	68	120	18	52



Motive started off with a very attractive birth weight and followed it up with some good growth. This long sided, sharp fronted individual possesses the deep barrel and haircoats like all Ruger offspring. Sound feet and legs to cover the big pastures, a nice polled head as well as a gentle attitude. This young gun has a little more stretch which will aid him in breeding the bigger cows. Top 25% weaning weight, top 30% yearling weight.



Sire - WDZ Warroad 906

Heifer pen approved! You wouldn't expect this much performance out of a heifers first calf especially with such a low birth weight. Tons of hair and volume as well as being homo polled. This stout made package is deep sided and thick topped, small headed and with all the features you want to see in a performance calving ease bull. Memphis is a sleep easy bull to throw in the heifer pen and will shock you with the performance he adds to his calves come sale time. Top 10% for birth weight and calving ease, top 35% for weaning and yearling weight.



26 DOGPATCH **MEMPHIS** 8M

HOMO POLLED MC897130 MGZ 8M 1/1/2024

SIRE

DAM

WCR COMMISSIONER 593 P
WDZ WARROAD 906
CD GRACE 7008 P

SOS APEX PLD 139F
DOGPATCH CALYPSO 41K
SOS CALYPSO 121F

PERF	BW		SEPT WT		FEB WT	
	78 lbs		842 lbs		1390 lbs	
EPDS	CE	BW	WW	YW	MK	MTL
	12.8	-3.4	65	117	18	50

27 DOGPATCH **MARTINI** 25M

HOMO POLLED MC897649 MGZ 25M 1/1/2024

SIRE

DAM

WCR COMMISSIONER 593 P
WDZ WARROAD 906
CD GRACE 7008 P

JWX DOWNTOWN 7C
DOGPATCH VENUS 12F
DOGPATCH VENUS 12C

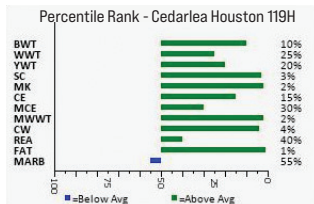
PERF	BW		SEPT WT		FEB WT	
	87 lbs		752 lbs		1205 lbs	
EPDS	CE	BW	WW	YW	MK	MTL
	9.5	-1.5	65	123	19	51

Calving ease pedigree. Martini's 87 lb birth weight and his EPD numbers confirm his calving ease and should work great in the heifer pen. An added feature is the performance that comes with this pedigree. Above average growth for weaning and yearling weight makes this guy one to own sale day. A nice hair coat and a gentle nature contribute to his overall appeal. Top 25% for birthweight and calving ease, top 35% for weaning weight, top 25% for yearling weight.



CHAROLAIS

Song of CEDARLEA HOUSTON 119H



Success again! MGZ 94B knocked it out of the park again. Her mating with Houston produced another bell ringer. A full brother was the high seller in the 2023 sale to Footprint farms in Alberta. Travis thinks so highly of him that he offered a semen pack that was a feature in the World Charolais Congress sale! A well put together individual from his deep sides to his impressive topline and good testicle development. Great performance, docile nature and world class genetics make Magnify a no brainer sale day! Top 35% calving ease, top 30% birth weight, top 35% weaning weight, top 35% milk.

28 DOGPATCH MAGNIEFY 94M
 POLLED/SCURRED MC897166 MGZ 94M 1/24/2024

SIRE	DAM
TURNBULL'S ELITE 322E CEDARLEA HOUSTON 119H CEDARLEA UTAH 53D	CSS SIR GRIDMAKER 2W DOGPATCH CRYSTAL 94B CRYSTAL D UNIVERSE 36U

PERF	BW		SEPT WT		FEB WT	
	96 lbs		778 lbs		1305 lbs	
EPDS	CE	BW	WW	YW	MK	MTL
	7.8	-1	64	116	25	57

29 DOGPATCH MUSKATEER 31M
 HOMO POLLED MC897139 MGZ 31M 2/2/2024

SIRE	DAM
TURNBULL'S ELITE 322E CEDARLEA HOUSTON 119H CEDARLEA UTAH 53D	MVY ALL STAR 61A DOGPATCH FANCY 93F DOGPATCH FANCY 93B

PERF	BW		SEPT WT		FEB WT	
	104 lbs		730 lbs		1305 lbs	
EPDS	CE	BW	WW	YW	MK	MTL
	5.2	-0.6	68	122	26	60



Fancy 93F cranked out another sale feature this year. A powerhouse of a calf that is not only long bodied but naturally deep and does not give up any thickness. There is power from both sides of this pedigree. An exceptional cow combined with LEO Houston's ability to add thickness and docility to his calves, makes them easy to work with. A great spread on EPD numbers indicates the versatility of this outstanding individual. A sound chassis to run on makes Muskateer a great option on sale day. Top 35% birth weight, top 20% weaning weight, top 25% yearling weight, top 30% for milk, top 20% total maternal.

Power can come in small packages and Mojo has it in spades. His moderate frame is covered by his heavy muscled stature. Natural thickness is present across his topline and barrel and extends deep into his hind quarter. Lots of curly hair covers his muscular physique. With a small head and smooth front, Mojo will calve easily and pass on the heavy muscling ability to his offspring. Top 25% weaning weight, top 35% yearling weight, top 25% for milk.



30

DOGPATCH MOJO 33M

HOMO POLLED MC897650 MGZ 33M 1/22/2024

SIRE

DAM

TURNBULL'S ELITE 322E
CEDARLEA HOUSTON 119H
CEDARLEA UTAH 53D

MVY ALL STAR 61A
DOGPATCH VENUS 58F
RPJ VENUS 793T

PERF

BW

SEPT WT

FEB WT

92 lbs

792 lbs

1295 lbs

EPDS

CE

BW

WW

YW

MK

MTL

4.2

-0.1

67

120

26

60

31

DOGPATCH MIMOSA 58M

POLLED MC897152 MGZ 58M 2/18/2024

SIRE

DAM

TURNBULL'S ELITE 322E
CEDARLEA HOUSTON 119H
CEDARLEA UTAH 53D

DOGPATCH GRID ROAD 11D
DOGPATCH FERRARI 45F
DOGPATCH FERRARI 45S

PERF

BW

SEPT WT

FEB WT

93 lbs

774 lbs

1280 lbs

EPDS

CE

BW

WW

YW

MK

MTL

9.7

-1.2

59

107

24

53



Dam - Dogpatch Ferrari 45F

Mimosa is a bit younger than his pen mates but that didn't slow him down. A stout made individual with a wide stance to show off his massive body and nicely put together frontend. Loads of volume and deep pants are connected to a long spine and nice shaped skull. This polled young prospect has lots of growth and hair to boot. He also is packing a large tool box to get the job done. Top 25% for birth weight, calving ease and milk.



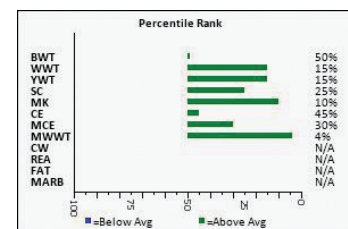
CHAROLAIS



Well the numbers don't lie! Manifest definitely lives up to his EPD profile. From a low birth weight to higher than average performance, this young gun checks all the boxes. A gentle disposition is passed on from his sire, LEO Houston, who also stamps his calves with hair, middle and scrotal size. A solid mother and proven sire makes Manifest an easy choice sale day. Top 15% for weaning and yearling weight, top 10 % for milk, top 4 % total maternal.



SIRE - CEDARLEA HOUSTON 119H



32 DOGPATCH **MANIFEST** 91M

POLLED/SCURRED MC897160 MGZ 91M 1/29/2024

SIRE

TURNBULL'S ELITE 322E
CEDARLEA HOUSTON 119H
CEDARLEA UTAH 53D

DAM

CJC SYMBOL B1067P
DOGPATCH AGATHA 39G
DOGPATCH AGATHA 39C

PERF	BW		SEPT WT		FEB WT	
	89 lbs		760 lbs		1260 lbs	
EPDS	CE	BW	WW	YW	MK	MTL
	6.3	0.3	71	128	32	67

33 DOGPATCH **MONUMENT** 92M

POLLED/SCURRED MC897165 MGZ 92M 1/8/2024

SIRE

MERIT ROUNDUP 9508W
KS LEVEL UP 13H
VMN DON'T BLINK 20D

DAM

SHSH BONAFIDE 10F
LAE HAVEN 92H
LAE FANTASY 867F

PERF	BW		SEPT WT		FEB WT	
	88 lbs		838 lbs		1300 lbs	
EPDS	CE	BW	WW	YW	MK	MTL
	3.1	-0.9	56	107	25	53



Sire - KS Level Up 13H



Dam - LAE Haven 92H

To produce a top end bull you have to start with a top end mother cow with exceptional udder quality, and foot structure, then combine it with a sire that adds hair, milk, calving ease and growth and you end up with a calf like Monument. A tight front end, little more neck extension will aid in calving followed by the explosive growth, will contribute to your bottom line. A clean sheath will help avoid any unwanted maintenance issues. Top 30% birth weight, top 35% milk.



Sire - BRCHE White Bear 8505 PLD ET

Coming from one of our matriarch cows, and the award winning sire BRCHE Whitebear 8505 this genetic combination has never failed to produce outstanding offspring, and Mojito is no exception. Natural thickness throughout his top carries down deep into his quarter. His smooth front and laid in shoulders combined a small head to ensure calving ease. With built in performance, Mojito will sire calves that pound down the scales in the fall and females you will want to retain for the herd. Top 30% for weaning weight.



34

DOGPATCH **MOJITO** 15M

HOMO POLLED MC897135 MGZ 15M 1/1/2024

SIRE

DAM

M&M OUTSIDER 4003 PLD
BRCHE WHITE BEAR 8505 PLD ET
TR MS BERKLY 4711B ET

MVY ALL STAR 61A
DOGPATCH FERRARI 15C
DOGPATCH FERRARI 45S

PERF	BW	SEPT WT	FEB WT			
	98 lbs	876 lbs	1450 lbs			
EPDS	CE	BW	WW	YW	MK	MTL
	3.9	0.3	66	114	18	51

35

DOGPATCH **MARKSMAN** 47M

HOMO POLLED MC897150 MGZ 47M 1/17/2024

SIRE

DAM

MVY ALL STAR 61A
DOGPATCH GILLETTE 7E
HC WHIRLWIND 927W

SOS HOME GROWN 15C
SOS ALISA 64G
TMJF ALISA 401A

PERF	BW	SEPT WT	FEB WT			
	93 lbs	864 lbs	1345 lbs			
EPDS	CE	BW	WW	YW	MK	MTL
	-0.2	1.5	68	114	24	59



Sire - MGZ Gillette 7E



Dam - SOS Alisa 64G

Again this year we have a Dogpatch Gillette 7L calf. We raised him and he went on to become a senior herdsire for HEJ Charolais in Alberta. The Gillette calves have always been popular because of their naturally thick bodies, a bold topline and docile nature. Marksman is no different. Polled performance from a proven pedigree means you can be assured of the quality. Last year's full brother was selected by Jeff Fogg from Invermay, Sask. Top 20% weaning weight, top 25% total maternal.





Sire - LT Badge 9184 PLD

Herd sire Alert. If you are looking for your next herd sire to have length, style, thickness, hair and homo polled performance you have to check out Magnum. An LT Badge son that will provide stress free calving, and backs it up with polled performance and a solid structured frame. From the ground up, Magnum is good footed and straight legged, deep throughout his body and wrapped up in a luxurious fur coat. Born with an awesome birth weight this eye catching individual will lead you into the future. Top 30% calving ease, top 40% birth weight.

36 DOGPATCH MAGNUM 43M

HOMO POLLED MC897147 MGZ 43M 1/12/2024

SIRE

DAM

LT AUTHORITY 7229 PLD
LT BADGE 9184 PLD
LT MADALYNN 6108 PLD

CSS SIR GRIDMAKER 2W
DOGPATCH KATELIN 73D
DOGPATCH KATELIN 73Z

PERF	BW		SEPT WT		FEB WT	
	84 lbs		836 lbs		1360 lbs	
EPDS	CE	BW	WW	YW	MK	MTL
	8.7	-0.2	59	105	17	46

37 DOGPATCH MEDALLION 1M

HOMO POLLED MC897122 MGZ 1M 1/20/2024

SIRE

DAM

LT BADGE 9184 PLD
LT GOVERNOR 1560 PLD
LT SYBILLE 6476 PLD

BRCHE WHITE BEAR 8505 PLD ET
DOGPATCH JAZZ 15J
DOGPATCH FERRARI 15C

PERF	BW		SEPT WT		FEB WT	
	85 lbs		814 lbs		1385 lbs	
EPDS	CE	BW	WW	YW	MK	MTL
	4.4	1.7	86	146	14	57



Sire - LT Governor 1560 PLD

Herd sire alert! If you want to latch on to some of the newest genetics in the breed take a look here. Out of an outstanding young mother and the performance backed LT Governor bull, Medallion posts an awesome birth weight followed up by the exciting performance in this package. Medallion checks all the boxes from great feet and legs, to hair and skeletal make up. Combined with his heavy muscling ability, Medallion is a multi use bull that you can use in the cow pen or throw him in with some select heifers. Top 1% for weaning weight, top 3% yearling weight



Sire - WIA Backwater Jack 060 P



Dam - Dogpatch Crystal 42C

Great Cross. The Backwater Jack calves are built right for calving. Small heads and a bit more neck extension start it off, followed by nicely laid in shoulders allows calves to slip out easily and then explode once they hit the ground with unbridled performance. Eye catching style is the reason these Backwater Jack offspring have done so well on the show road. A nice spread in this EPD profile makes Mission one to take home sale day. Top 25% calving ease, top 35% birth weight, top 40% weaning weight, top 30% milk.



38

DOGPATCH MISSION 42M

POLLED/SCURRED MC897145 MGZ 42M 1/8/2024

SIRE

DAM

PVF RIDGE 7142
WIA BACKWATER JACK 060 P
BRCHE TR DORY 6501

MVY ALL STAR 61A
DOGPATCH CRYSTAL 42C
DOGPATCH CRYSTAL 69Z

PERF	BW		SEPT WT		FEB WT	
	103 lbs		792 lbs		1240 lbs	
EPDS	CE	BW	WW	YW	MK	MTL
	9.2	-0.7	63	112	26	57

39

DOGPATCH MAFIA 12M

HOMO POLLED MC897132 MGZ 12M 1/24/2024

SIRE

DAM

MVY GOVERNOR 5G
MVY BACKDRAFT 35J
MVY G-Q 88C

D R MONSOON 45
DOGPATCH MIKEALA 101H
DOGPATCH MIKEALA 101B

PERF	BW		SEPT WT		FEB WT	
	92 lbs		796 lbs		1285 lbs	
EPDS	CE	BW	WW	YW	MK	MTL
	3.8	0.6	63	106	25	57



Sire - MVY Backdraft 35J

Mafia is a moderate framed, deep sided bull that processes good length of spine and a strong topline which contributes to his natural thickness. A compact skull structure and smooth made front end will ensure calving ease. A nice hair coat and docile nature adds value to this package. Top 35% milk, top 40% for weaning weight.



HOMO POLLED

39

CHAROLAIS



Sire - JFC Jimmy Juice 125J



Dam - G.BROS Miss 1381J

We purchased a few top end cows from the Gilliland dispersal and they didn't disappoint. Mystic comes with a desirable birth weight and has a fair amount of juice in his tank for growth. Great haired for winter months and sound on his feet and legs, Mystic will make a great cross on any herd and provide the Char cross advantage.

40

DOGPATCH **MYSTIC** 80M

POLLED MC897157 MGZ 80M 1/24/2024

SIRE

DAM

SPARROWS ROBERT 842F
JFC JIMMY JUICE 125J
JFC MS CHRISTINA 521C

SOS CHIVE ON 122C
G.BROS MISS 1381J
G.BROS TATIANA 381D

PERF	BW		SEPT WT		FEB WT	
	90 lbs		752 lbs		1295 lbs	
EPDS	CE	BW	WW	YW	MK	MTL
	3.6	1.6	62	107	25	56

41

DOGPATCH **MARATHON** 85M

POLLED MC897158 MGZ 85M 1/28/2024

SIRE

DAM

SPARROWS ROBERT 842F
JFC JIMMY JUICE 125J
JFC MS CHRISTINA 521C

SUNRISE SUNBURST 21Y
GBROS GLORIA RGCG 9G
G.BROS DREAMY RGCG 823E

PERF	BW		SEPT WT		FEB WT	
	105 lbs		762 lbs		1305 lbs	
EPDS	CE	BW	WW	YW	MK	MTL
	1.2	2.4	60	112	20	50



Dam - GBROS Gloria RGCG 9G

We selected this dam based on Greg Gilliland's advice at their dispersal, and he was right! A slightly bigger birth weight, but that's expected from well fed dispersal cows. She raised a great looking calf off the Jimmy Juice bull. Good length and frame size will allow Marathon to reach the mature cows in your pasture. A free moving bull that can cover a lot of pasture and the tool box to do it!



Sire - LT Nationwide 8455 PLD ET

In the spring of 23, Latenight was a sure thing for the following year's bull sale. In early summer we noticed his dam had severe mastitis and we couldn't get it under control so we had to ship her. Latenight spent the summer stealing. We knew the genetics were there, so we decided to keep him over and he has really come along. Like all the Nation Wide calves, easy birthing and explosive growth are present in this package. Top 25% weaning, top 30% yearling



42 DOGPATCH LATENIGHT 63L

HOMO POLLED MC897172 MGZ 63L 1/10/2023

SIRE		DAM	
LT PATRIOT 4004 PLD		HBC BROKER 318N	
LT NATIONWIDE 8455 PLD ET		DOGPATCH DIVA 17Y	
LT BRENDA 2184 PLD		QCR PRECIOUS 17P	

PERF	BW	SEPT WT	FEB 6/25 WT
	93 lbs	-	1885 lbs

EPDS	CE	BW	WW	YW	MK	MTL
	1.1	0.7	67	127	16	50

43 DOGPATCH LAGER 33L

HOMO POLLED MC897651 MGZ 33L 1/1/2023

SIRE		DAM	
TURNBULL'S ELITE 322E		MVY ALL STAR 61A	
CEDARLEA HOUSTON 119H		DOGPATCH VENUS 58F	
CEDARLEA UTAH 53D		RPJ VENUS 793T	

PERF	BW	SEPT WT	FEB 6/25 WT
	88 lbs	-	1820 lbs

EPDS	CE	BW	WW	YW	MK	MTL
	4.2	-0.1	67	120	26	60

A light birth weight two year old bull that moves freely and will cover the big pastures on a solid set of feet and legs. His low birth weight, small head and tight front end will ensure calving goes easy and a nice hair coat to top it off. Top 25% weaning weight, top 30% yearling, top 20% total maternal



CHAROLAIS



Sire - Char-Lewis Huxley 150H

44

DOGPATCH LARAMIE 97L

HOMO POLLED MC897175 MGZ 97L 2/6/2023

SIRE

DAM

MAIN LEDGER UP 105E PCC SUDDEN IMPACT 848U
CHAR-LEWS HUXLEY 150H DOGPATCH TINK 97B
MAIN WANDAS CHISM 830F DOGPATCH TINK 22W

PERF	BW		SEPT WT		FEB 6/25 WT	
	102 lbs		-		1765 lbs	
EPDS	CE	BW	WW	YW	MK	MTL
	1.2	-0.3	49	102	16	41

Laramie's pedigree is backed with calving ease and longevity. Coming from an older dam, and bred to a super calving ease sire, you can rest assured that calving issues will not be a concern. A sound moderate frame and running gear will allow Laramie to get out and cover the cows in good time. Top 40% for birth weight.

45

DOGPATCH LEROY 69L

HOMO POLLED MC897177 MGZ 69L 2/12/2023

SIRE

DAM

MAIN LEDGER UP 105E HBC HERCULES 607D
CHAR-LEWS HUXLEY 150H DOGPATCH CRYSTAL 69H
MAIN WANDAS CHISM 830F DOGPATCH CRYSTAL 69Z

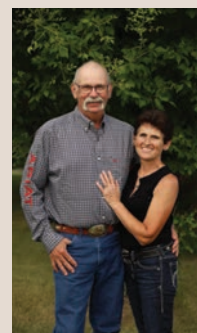
PERF	BW		SEPT WT		FEB 6/25 WT	
	93 lbs		-		1865 lbs	
EPDS	CE	BW	WW	YW	MK	MTL
	4.3	-0.1	52	111	24	50

A solid two year old that will provide the Charolais advantage to any herd. Homo polled and ready for action, this low birth weight powerhouse has a free moving stride and great foot structure allows him to walk out and breed without limitations.



TESTIMONIAL

We've been in the cattle industry for the past 45 years and consistently used Charolais bulls. Currently using only Dogpatch sires on our cows and heifers. Have always been pleased with the positive feedback from the market managers and staff. Dogpatch bulls have been very docile and easy calving. A pleasure working with Mick and his family. The Best of the Breeds sale has always brought top notch bulls to town. Jeff and Yvonne Fogg Tri-Bar Livestock Invermay, SK



HARCOURT CHAROLAIS



Welcome to the 2025 edition of the Best of the Breeds. What a great time to be in the cow business. Hay prices are down a bit and calf prices are at record levels. As I write this, a package of 74 Char cross steers, 800 lb average weight brought \$412.50. Hot!! Whether you sold off the cow or backgrounded, you were very well paid for your commitment to raising the best beef on the planet! Once again the Char cross calves are topping every market in Canada. These calves are in high demand from feedlots for their carcass traits and the ability to convert feed into pounds of beef. Buying a herd bull is an investment. Buy what you can afford but know that buying top bulls pays off in the quality of your calf crop. That in turn brings more dollars at the market. Feel free to reach out if you have any questions on the bulls, the sires or the mothers. Always happy to talk cows.

Doug, Tammy, Jennifer & Justin Harcourt

Doug's Cell: 306-383-7068

Justin's Cell: 306-383-7168

Check out the bull videos on our Facebook page, www.buyagro.com or www.harcourtcharolais.com

46 HBC HORIZON 414M

HOMO POLLED MC881942 HBC 414M 1/29/2024

SIRE

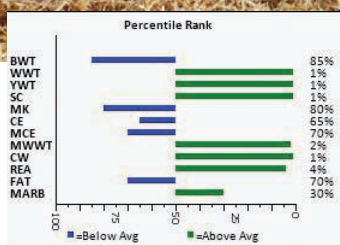
DAM

LT BADGE 9184 PLD
LT GOVERNOR 1560 PLD
LT SYBILLE 6476 PLD

HBC G2 430B
HBC ROYAL 719E
HBC FIRST DATE 412B

PERF	BW		WW			FEB 1 WT	
	104 lbs		1053 lbs			1525 lbs	
EPDS	CE	BW	WW	YW	MK	MTL	TSI
	3.7	2.7	103	170	18	70	295.06

Boys take a look! Herd bull here. Power and depth with all the attributes! Homo polled, big red testicles, hair and a nice big square foot. This bull is legit! His mother is the great HBC Royal 719E. She has produced breeder progeny her whole life and this year's model sired by the elite performance bull LT Governor is her best so far. There's proven results in her offspring as well as a maternal sibling to 414M sired by WCR Commissioner produced HBC Stealth, a very popular class winner and Reserve Intermediate Bull Calf Champion at Agribition in 2022. HBC 414M's weaning weight, yearling weight and TSI EPD's land him in the top 1% of the breed. This stud will change your program.



414M Percentile Rank



Sire - LT Governor 1560 PLD



Maternal Sister of 414M - HBC 920G

CHAROLAIS



47 HBC RIVAL 424M

4TH GEN POLLED MC881946 HBC 424M 2/25/2024

SIRE

DAM

WCR COMMISSIONER 593 P HBC CORTEZ 805F
HBC SUMMIT 1H HBC MISS 27H
HBC TEMPTATION 802F MISS PRAIRIE COVE 724E

PERF	BW		WW		FEB 1 WT		
	83 lbs		821 lbs		1400 lbs		
EPDS	CE	BW	WW	YW	MK	MTL	TSI
	14.5	-1.7	61	103	24	54	257.6

48 HBC MAFIA 410M

3RD GEN POLLED MC881939 HBC 410M 1/13/2024

SIRE

DAM

LT LONG DISTANCE 9001 PLD WCR COMMISSIONER 593 P
M&M OUTSIDER 4003 PLD HBC ROYAL 920G
M&M MS CARBINE 1567 PLD HBC ROYAL 719E

PERF	BW		WW		FEB 1 WT		
	93 lbs		978 lbs		1455 lbs		
EPDS	CE	BW	WW	YW	MK	MTL	TSI
	13.4	-1.2	75	128	27	64	257.5



This is the last Summit son to sell and what a great way to end the run of great sons to sell in this sale. You can certainly see why they are so popular with commercial men. HBC 424M has a great haircoat with impeccable structure and disposition. He is the cowman's kind out of a very sound heavy milking cow. This guy will throw calves that top the market and that means big money in your pocket!



Sire - HBC Summit 1H

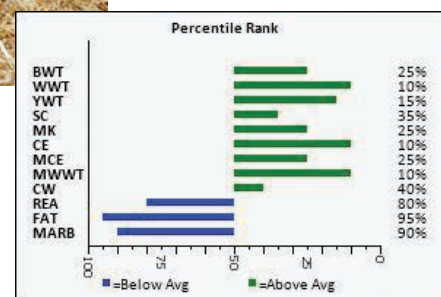
For guys who love to sell steers that top the market or compete in the show ring, Mafia is a 3/4 brother to HBC Stealth, the 2022 Agribition Reserve Intermediate Bull Calf Champion. The amount of muscle and rib in this guy is truly something to admire. Put him on any type of cow and watch the calves pop in the pasture. He is extremely attractive and smooth through his front, flowing easily into an explosive top and rib with tons of meat right through his top down through his flank and lower quarter. Outsider genetics have dominated the North American landscape for years. Females that are truly extraordinary and bulls that can change the direction of a program. Mafia comes from our Royal cow family that dominates our herd in production year after year. We love his haircoat, structure and puppy dog disposition. A real asset to the breed.



Dam - HBC Royal 920G



3/4 Brother - HBC Stealth 203K



Take a hold breeders! Century is unique in the fact that he carries all the performance genetics in a calving ease heifer bull package. He will calve heifers with no problem. His phenotype and structure are flawless. He has a great haircoat. He is fluid and athletic in his movement and has a great disposition. The RBM Keystone bull is new to Canada but he is proving to be a bull that sires progeny in the high end of the spectrum when it comes to quality. The dam's side is equally impressive. HBC 215K is as good as you can make them. Long, smooth and feminine. Structurally perfect and she has that show type udder that is very hard to come by. Patriot daughters are some of the best producers in the breed. 215K has siblings working at Balamore Farms, C2 Charolais and Hunter Charolais. Proven genetics are valuable assets. Get in on this high quality heifer bull.



Sire - RBM Keystone H41



Dam - HBC Brandy 215K



Paternal Sibling - JHC 402M



49

JHC CENTURY 401M

3RD GEN POLLED PMC885330 JHC 401M 1/1/2024

SIRE	DAM
LT RUSHMORE 8060 PLD RBM KEYSTONE H41 RBM JASMINE F251	LT PATRIOT 4004 PLD HBC BRANDY 215K LAE BRANDY 4141B

PERF	BW		WWT		FEB 1 WT		
	81 lbs		904 lbs		1370 lbs		
EPDS	CE	BW	WW	YW	MK	MTL	TSI
	8.4	-0.6	67	118	25	58	265.5

50

HBC PACIFIC 403M

4TH GEN POLLED MC881935 HBC 403M 1/5/2024

SIRE	DAM
LT AUTHORITY 7229 PLD LT BADGE 9184 PLD LT MADALYNN 6108 PLD	HVA FIREBALL 662F HBC RAMONA 210K CHARBURG RAMONA 19X

PERF	BW		WW		FEB 1 WT		
	93 lbs		891 lbs		1360 lbs		
EPDS	CE	BW	WW	YW	MK	MTL	TSI
	6.5	0.5	70	123	18	53	253.8

HBC 403M is a calving ease bull that is very attractive and athletic. The LT Badge sons have become consistent producers for many breeders across Canada and the USA. He will leave you a growthy set of popular calves on sale day. His mother is a fantastic 2 year old that has a perfect udder and is phenotypically perfect. She goes back to the great Duty Free bull that produced sons for a ton of leading breeders. Performance and hair and great structure are hallmarks of Duty Free. Add those dimensions to your herd. You will benefit from years of predictable performance. The homework is all done. Jump on board.



Sire - LT Badge 9184 PLD



CHAROLAIS



HL

51

51

HBC KEYNOTE 417M

HOMO POLLED MC881944 HBC 417M 2/10/2024

SIRE

DAM

LT RUSHMORE 8060 PLD WC MILESTONE 5223 P
RBM KEYSTONE H41 HBC TEMPTATION 802F
RBM JASMINE F251 HBC BRIGHT LIGHTS 509C

PERF	BW		WW			FEB 1 WT	
	99 lbs		936 lbs			1480 lbs	
EPDS	CE	BW	WW	YW	MK	MTL	TSI
	8.2	1.2	72	121	28	65	273.1



Sire - RBM Keystone H41

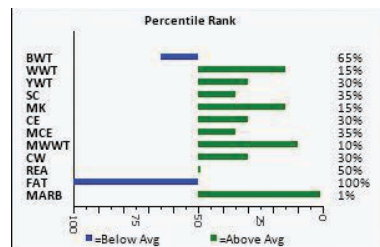


Dam - HBC Temptation 802F

We are really high on the new genetics that RBM Keystone brings. Calving ease, performance, hair and great feet. I don't know if we have used a bull that is as consistent with bulls and heifers as Keystone is. When you analyze this young herdsire you will find great structure with a thick haircoat. He has big red testicles and a herd bull skull. He is flat out good from the ground up and is as loose hided as you will find. *Power, performance, hair and fertility in a great package. All great herd bulls have fantastic mothers and HBC 802F is a great one. She is as deep and sound as they come with a great level udder with heavy milk flow. Her calves pop! That is what put her in the donor pen. Get in on the Keystone progeny. They are here to stay!



HBC Summit 1H - Maternal Sibling of 417M
& Sire of lot 47



CHAROLAIS



Justin recently convoked with Distinction from the University of Saskatchewan with a Bachelor of Science degree in Agriculture majoring in Agribusiness. He has since begun working as the new Saskatchewan and Manitoba Fieldman for the Charolais Banner.



Jennifer helped coach the Team Lakeland 14U women's team to a silver medal at the Saskatchewan Summer Games this past summer.

FAIRVIEW FORDEN FAIRVIEW FARM LTD.



**Lyle, Leanne, Carter, Declan & Mara
Ken & Twila**
Lyle's Cell – 306-290-5953

We are thrilled to welcome you to our 21st Annual Bull Sale. This year's offering is our largest and most diverse with multiple new sire groups, including Badger, Springsteen, Scorpion, Bourbon Street & Monument. We also have some Sysco sons off our new Black Baldie donor cow which we think you will like. If you're looking for homo polled fleckvieh bulls we have a wide variety to choose from and possibly the most you will find at any sale in the country. We also have a good selection of red and black bulls, blaze faced and baldies, providing the full spectrum available within the breed.

With cattle prices at record highs, the value of a good momma cow is paramount. Simmental cross females are some of the best in the industry. Simmental provides docility, maternal strength, fertility, longevity and big weight calves in the fall. When you add Fleckvieh to the equation you also gain hybrid vigour for added performance and greater milk in your females.

All bulls are DNA tested for colour, dilutor and polled or are known by pedigree. This is an investment we make each year offering you more certainty in your breeding program. The bulls are developed on a TMR ration, consisting of barley & alfalfa silage, hay, cereal grains and a supplement pellet. The bulls are on a full herd health program and will be double vaccinated with fusogard to reduce the chances of foot rot.

Please join us for our Bull Pen Open House March 15 & 16 1-5 PM at the farm. This is a great opportunity to spend extra time looking over the bulls and discussing your needs with us. It is also a chance to walk through the cow herd to see the genetic value that comes along with the bulls.

Follow us on Facebook "Forden Fairview Farm – Simmentals" to stay up to date with our program. Videos will be available on our Facebook page, DLMS and buyagro.com in early March. You can also scan the QR code throughout the catalogue for the direct video link.

Like us on Facebook!
Forden Fairview Farm - Simmentals

SIMMENTAL BREED AVERAGES

EPDS	CE	BW	WW	YW	MILK	MCE	MWWT
	8.1	3.4	78.6	114.4	26.2	4.4	65.4



52 FAIRVIEW DIESEL 718M

HETERO POLLED FULLBLOOD CA-PT1492101 FDN 718M 22/1/2024

SIRE

DAM

SIBELLE SPARTACUS 8A KEATO PLD CLASSIFIED 10A
SIBELLE POL DARWIN 21F KEATO PLD ELOQUENCE 18E
SIBELLE POL MOLLY 7B KEATO BROOK 8B

PERF	BW				ACT WWT		
	104 lbs ET				839 lbs		
EPDS	CE	BW	WW	YW	MK	MCE	MWWT
	7.8	3.5	70.3	95	33.6	5.4	68.8

HETERO POLLED NON-DILUTOR 100% FLECKVIEH

- Diesel has the herd bull presence, a powerful design and the pedigree to back it up
- Full brother to the \$51,500 Evolution bull we sold to Keet Simmentals in 2021
- Dam is top donor cow, Eloquence, who now resides in the Knox Farms (Australia) donor program.
- 22 daughters of Eloquence in the herd and they are some of our best young females
- Diesel is well pigmented, nearly red to the ground and has a solid dark hoof under him
- The sons and daughters of his bull will be special



Fairview Evolution 318H - \$51,500 Full Brother

SIMMENTAL



Sire - Fairview Philosophy 99E

**HOMO POLLED NON DILUTOR
100% FLECKVIEH**

- Enforcer is a Philosophy son out of an Eloquence/Darwin daughter who did an excellent job on her first calf
- Wide top, deep hip and great length on this bull
- Excellent EPDS being in the top 25% for many traits
- We have sold Philosophy semen across Canada and there are nearly 200 progeny in 50 different herds.
- Philosophy has proven to be a heifer bull & one to moderate bw on cows.
- Last of our Philosophy semen was sold this winter. Here is an excellent opportunity to purchase a top son and continue to fill the need in the industry for homo polled fleckvieh bulls.

53 FAIRVIEW ENFORCER 137M

HOMO POLLED FULLBLOOD CA-P1500018 FDN 137M 13/1/2024

SIRE

BEE PHANTOM 79B
FAIRVIEW PHILOSOPHY 99E
STARWEST POL ARIEL

DAM

SIBELLE POL DARWIN 21F
FAIRVIEW QUIANA 618K
KEATO PLD ELOQUENCE 18E

PERF	BW		ACT WWT				
	92 lbs		800 lbs				
EPDS	CE	BW	WW	YW	MK	MCE	MWWT
	11.1	2.5	77.9	106.3	32.2	6.5	71.2

54 FAIRVIEW MARDI GRAS 132M

HETERO POLLED FULLBLOOD CA-P1499900 FDN 132M 28/1/2024

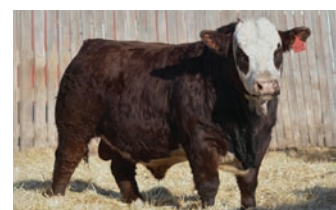
SIRE

FGAF ELECTRIC AVENUE 140E
BLL BOURBON STREET 155J
STARWEST POL BESSIE

DAM

BEE PHANTOM 79B
FAIRVIEW QUINCIE 118H
KEATO PLD ELOQUENCE 18E

PERF	BW		ACT WWT				
	96 lbs		848 lbs				
EPDS	CE	BW	WW	YW	MK	MCE	MWWT
	7.3	3.9	78.5	111	32.3	1.8	71.6



Sire - BLL Bourbon Street 155J

**HETERO POLLED NON DILUTOR
100% FLECKVIEH**

- Mardi Gras presents a unique opportunity to acquire the only Bourbon Street son in Canada in 2025
- Bourbon Street sold from Beechiner Land & Livestock to 100X Ranch, ND & we acquired a semen package.
- Super stout with a wide top, great muscling, dark red coloring and has solid dark foot
- Dam is a Phantom daughter from our Eloquence donor. Phantom daughters are some of our best females with excellent udders and they are very productive cows
- Mardi Gras is a bull that will be appreciated by many on sale day.



Sire - Fairview Theory 218H

**HETERO POLLED NON DILUTOR
FULL FLECKVIEH**

- Fusion is one of three extra-age fall bulls on offer
- Our fall program has been designed with sound, functional females and carefully developed to offer bulls with extra age, size and maturity
- Whether you want to run a bull with more females, larger pastures or bigger framed cows these bulls will get it done
- Fusion has tremendous volume, deep muscled quarter with a wide top and that dark red color that we strive to produce



55

FAIRVIEW FUSION 22L

HETERO POLLED FULLBLOOD CA-P1493709 FDN 22L 16/9/2023

SIRE	DAM
SIBELLE POL DARWIN 21F	FAIRVIEW LITHIUM 81F
FAIRVIEW THEORY 218H	FAIRVIEW LILLIANNA 22H
KEATO PLD ELOQUENCE 18E	FAIRVIEW LUCY 25E

PERF	BW				ACT WWT		
	90 lbs				803 lbs		
EPDS	CE	BW	WW	YW	MK	MCE	MWWT
	9.4	2.8	61.1	82.4	30.7	4.7	61.3

56

FAIRVIEW COUGAR 176L

HETERO POLLED FULLBLOOD CA-P1493710 FDN 176L 30/8/2023

SIRE	DAM
SIBELLE POL DARWIN 21F	FAIRVIEW LITHIUM 81F
FAIRVIEW EVOLUTION 318H	FAIRVIEW JACKIE 76H
KEATO PLD ELOQUENCE 18E	FAIRVIEW JANE 76F

PERF	BW				ACT WWT		
	85 lbs				820 lbs		
EPDS	CE	BW	WW	YW	MK	MCE	MWWT
	6.1	3.3	58.2	78	29.5	2.9	58.6



Dam - Fairview Jackie 76H

**HETERO POLLED NON DILUTOR
FULL FLECKVIEH**

- Cougar carries added length and size with good thickness throughout
- Dam is an excellent uddered Lithium daughter who goes back to the Jane 76F cow, who is the dam of Mara's 4-H heifers
- Females in this "J" family are productive, good footed, nice uddered and easy to work with
- When it comes to our fall program, females who are born into that program, stay in the program
- We enjoy our fall program as the cattle are low maintenance and easy to manage with calving at harvest time. For 2025 we will be calving nearly 20 females in this program.





Sire - Virginia Springsteen 66K

HOMO POLLED NON DILUTOR FULL FLECKVIEH

- First sons from our new herdsire Springsteen from Virginia Ranch
- Springsteen sons are deep sided, dark coloured, polled bulls with lots of pigment.
- Lennon has been a standout in this sire group.
- He is stout, long bodied, with good muscle shape and is nearly red to the ground.
- Dam is a nice uddered Payroll daughter and grand dam came from Antrim Simmentals.

57 FAIRVIEW LENNON 34M

HOMO POLLED FULLBLOOD CA-P1500011 FDN 34M 20/1/2024

SIRE

SSS GENESIS SILVERADO 1G
VIRGINIA SPRINGSTEEN 66K
EAGLE RIDGE HONEYMOON 66H

DAM

FAIRVIEW PAYROLL 19D
FAIRVIEW FAYE 38K
ANTRIM FAYE 8F

PERF	BW				ACT WWT		
	103 lbs				741 lbs		
EPDS	CE	BW	WW	YW	MK	MCE	MWWT
	6.1	5.6	75.4	109.7	30.9	2.2	68.6

58 FAIRVIEW JAGGER 134M

HOMO POLLED FULLBLOOD CA-P1500019 FDN 134M 10/1/2024

SIRE

SSS GENESIS SILVERADO 1G
VIRGINIA SPRINGSTEEN 66K
EAGLE RIDGE HONEYMOON 66H

DAM

SBV REPUTATION 707F
FAIRVIEW QUENNA 118K
KEATO PLD ELOQUENCE 18E

PERF	BW				ACT WWT		
	86 lbs				795 lbs		
EPDS	CE	BW	WW	YW	MK	MCE	MWWT
	8.2	3.1	73.9	103.3	33	3.9	70



Grandsire - SBV Reputation 707F

HOMO POLLED NON DILUTOR FULL FLECKVIEH

- Jagger is another feature Springsteen son with moderate birth weight
- Long spined, deep-sided, well balanced bull
- His dam is a Reputation daughter from our Eloquence donor
- Quenna did a great job on her first calf weaning Jagger at nearly 800lbs



"The Weekenders"

The kids enjoy helping with the young calves and looking after their 4-H cattle

HOMO POLLED NON DILUTOR FULL FLECKVIEH

- Bought Springsteen as an easy calving fleckvieh bull and used him mostly on heifers and young cows the first year
- He calves quite well, the calves have growth to them, they are coloured right and are all polled
- Zeppelin is a super stout, deep sided, thick made bull on a moderate frame.
- Dam is a Theory daughter with a superb udder and is sound footed.
- Zeppelin could be suitable for heifers or young cows based on his bw, epd & pedigree



59

FAIRVIEW **ZEPELIN** 88M

HOMO POLLED FULLBLOOD CA-P1500023 FDN 88M 15/1/2024

SIRE

SSS GENESIS SILVERADO 1G
VIRGINIA SPRINGSTEEN 66K
EAGLE RIDGE HONEYMOON 66H

DAM

FAIRVIEW THEORY 218H
FAIRVIEW YOLANDA 88K
FAIRVIEW MS PHANTOM 88D

PERF	BW			ACT WWT			
	84 lbs			789 lbs			
EPDS	CE	BW	WW	YW	MK	MCE	MWWT
	10.9	3.3	75.4	104.8	31.8	5.9	69.5

60

FAIRVIEW **OZZY** 117M

HOMO POLLED FULLBLOOD CA-P1500016 FDN 117M 14/1/2024

SIRE

SSS GENESIS SILVERADO 1G
VIRGINIA SPRINGSTEEN 66K
EAGLE RIDGE HONEYMOON 66H

DAM

FAIRVIEW EVOLUTION 318H
FAIRVIEW SYDNEY 117K
FAIRVIEW SAVANNAH 17E

PERF	BW			ACT WWT			
	95 lbs			736 lbs			
EPDS	CE	BW	WW	YW	MK	MCE	MWWT
	6.8	6.2	74.1	102.8	29.9	3.2	66.9

HOMO POLLED NON DILUTOR FULL FLECKVIEH

- Ozzy is another Springsteen son and quite likely the darkest coloured of them all
- Dam is an Evolution daughter from the Sering cow family which has put many bulls through the sale and females into the herd
- Big volume bull, liver red in colour with large wrap around goggles



VIEW OUR VIDEOS!



SIMMETNAL

These two flush mates are sired by Philosophy and out of our original donor cow “Marci.” Marci produced our Zues bulls a few years back as well as the \$25,000 Kingpin bull who sold to Jensen Simmentals, Kansas. Kingpin now resides at Rugged R Cattle Co in Louisiana



61 **FAIRVIEW WISEGUY 357M**
 HETERO POLLED FULLBLOOD CA-PT1491809 FDN 357M 19/1/2024

PERF	BW				ACT WWT			
	104 lbs ET				845 lbs			
EPDS	CE	BW	WW	YW	MK	MCE	MWWT	
	7.6	3.4	77.7	109.3	31.4	2.2	70.3	

SIRE
 BEE PHANTOM 79B
 FAIRVIEW PHILOSOPHY 99E
 STARWEST POLARIEL

DAM
 DFM MARCUS 14M
 TRIPLE F MISS MARCUS 25U
 SLS POL-LYNN 75P



Fairview Kingpin 57H
 \$25,000 Full Brother

HETERO POLLED NON DILUTOR
 100% FLECKVIEH

- Philosophy provides a combination of growth and calving ease
- Previous full brothers have had average of 95 lb bw
- Born to a fleckvieh recip who took him overdue hence the added bw
- Wiseguy is long-bodied, red to the ground with a very good foot

62 **FAIRVIEW LEGEND 257M**
 HETERO POLLED FULLBLOOD CA-PT1491808 FDN 257M 11/1/2024

PERF	BW				ACT WWT			
	106 lbs ET				932 lbs			
EPDS	CE	BW	WW	YW	MK	MCE	MWWT	
	7.6	3.8	82.1	115.6	31.4	2.2	72.4	



Dam - Triple F Miss Marcus 25U

HETERO POLLED NON DILUTOR
 100% FLECKVIEH

- Legend was top weaning bull at 932 lbs.
- Added frame and length on this heavy weight bull
- One of our oldest fleckvieh cows was his recip dam hence the added bw.



VIEW OUR VIDEOS!



"The Cook"

Russell Asapace has been with us for 2.5 years.
The cows love to see him coming!

HOMO POLLED NON DILUTOR 100% FLECKVIEH

- Force is a smooth made well marked Theory son who would be suitable for use on heifers
- Dam is a Philosophy daughter and grand dam is known for moderate birth weights
- Strong set of EPDs being in the top 5% for CE, top 15% for BW and MCE & top 30% for Milk
- Very dark colouring with neat look and best part is all his calves will be polled.



63 FAIRVIEW **FORCE** 2M

HOMO POLLED FULLBLOOD CA-P1499899 FDN 2M 11/1/2024

SIRE

DAM

SIBELLE POL DARWIN 21F FAIRVIEW PHILOSOPHY 99E
FAIRVIEW THEORY 218H FAIRVIEW COLUMBIA 62H
KEATO PLD ELOQUENCE 18E FAIRVIEW ALBERTA 60D

PERF	BW				ACT WWT		
	87 lbs				760 lbs		
EPDS	CE	BW	WW	YW	MK	MCE	MWWT
	14.3	0.8	64.6	85	29.5	7.3	61.8

64 FAIRVIEW **LUCKY** 72M

HOMO POLLED FULLBLOOD CA-P1500017 FDN 72M 17/1/2024

SIRE

DAM

BEE PHANTOM 79B FAIRVIEW EVOLUTION 318H
FAIRVIEW PHILOSOPHY 99E FAIRVIEW CASSIDY 62K
STARWEST POL ARIEL FAIRVIEW ALBERTA 60D

PERF	BW				ACT WWT		
	85 lbs				746 lbs		
EPDS	CE	BW	WW	YW	MK	MCE	MWWT
	12.5	1.4	69.8	93.2	28.9	5.6	63.8

HOMO POLLED NON DILUTOR 100% FLECKVIEH

- Lucky is another easy calving herd sire prospect off Philosophy
- From the same "Alberta" cow family as the bull above and by pedigree they are nearly full brothers
- Pedigree is stacked with donor cows (Eloquence, Ariel, She Devil) so one can expect his daughters to be keepers.



65 FAIRVIEW **BLASTER** 179M

HORNED FULLBLOOD CA-1500022 FDN 179M 22/1/2024

SIRE

DAM

ANCHOR D WASABI 410G JB CDN APACHE JUNCTION 1831
KEET'S HAN SOLO 56H KEATO PLD JAYDENE 079J
KEET'S GINNY 38G KEATO DIGGITY DANDY 2D

PERF	BW				ACT WWT		
	96 lbs				803 lbs		
EPDS	CE	BW	WW	YW	MK	MCE	MWWT
	8	4.9	79.7	114.6	33.7	5.5	73.6

HORNED NON DILUTOR 100% FLECKVIEH

- Blaster is the daughter of the \$20,000 heifer we bought from Keato Meadow Simmentals
- Dam is sired by Apache Junction from the well respected JB Livestock Co.
- Weaning weight just over 800 lbs off first calf heifer
- Thick made with a wide top and deep quarter & outcross pedigree



Dam - Keato PLD Jaydene 079J





66 FAIRVIEW VELOCITY 63M

HETERO POLLED FULLBLOOD CA-P1499889 FDN 63M 30/1/2024

SIRE

DAM

SIBELLE POL DARWIN 21F
FAIRVIEW THEORY 218H
KEATO PLD ELOQUENCE 18E

FGAF SELDOM 835L
FAIRVIEW CHERRY 1D
GRINALTA'S CHERRY PFF81S

PERF	BW			ACT WWT		
	96 lbs			727 lbs		
EPDS	CE	BW	WW	YW	MK	MCE
	10.6	2.1	56.3	73.1	34.6	4.8
						62.8



Sire - Fairview Theory 218H

HETERO POLLED NON DILUTOR
100% FLECKVIEH

- Velocity has a real cool look with his heavy pigment, dark colour and unique markings
- Dam is our Cherry cow who is a model female with ideal udder design & teat size
- Every Cherry daughter has made the replacement pen with a full sister in the herd
- Deep bodied, sound footed bull with good length



67 FAIRVIEW KEPLER 124M

HETERO POLLED FULLBLOOD CA-P1499893 FDN 124M 1/2/2024

SIRE

DAM

SIBELLE POL DARWIN 21F
FAIRVIEW THEORY 218H
KEATO PLD ELOQUENCE 18E

SIBELLE CODA 17A
TRIPLE T GEMMA 124G
TRIPLE T LYNETTE 606B

PERF	BW			ACT WWT		
	105 lbs			810 lbs		
EPDS	CE	BW	WW	YW	MK	MCE
	8.4	4.3	73	97.1	36.2	5.1
						72.7

HETERO POLLED NON DILUTOR 100% FLECKVIEH

- Kepler is a heavy muscled son of a powerful Coda daughter we purchased from Triple T Diamond Simmentals.
- Combination of dam and Theory really works as this is their third son to be in the sale
- The first two sold to Jody Flavel & T3 Ranch
- As a Theory son, Kepler's calves will come easy and his daughters will make good momma cows.



68 FAIRVIEW VIENNA 14M

HETERO POLLED FULLBLOOD CA-P1500024 FDN 14M 22/1/2024

SIRE

DAM

BLACK GOLD BRYCK 73F
BLACK GOLD MANHATTAN 123J
BLACK GOLD MS KRISTIN 73E

FAIRVIEW JUNIOR 165G
FAIRVIEW SIENNA 19J
FAIRVIEW SANDY 19G

PERF	BW			ACT WWT		
	96 lbs			728 lbs		
EPDS	CE	BW	WW	YW	MK	MCE
	6.6	4.3	68.5	102.5	36	3.1
						70.3

HETERO POLLED NON DILUTOR FULL FLECKVIEH

- Stout Manhattan son with a thick build, good hair and presence
- Sister sold in World Simmental Sale for \$13,000 to Chittick Family Farms
- Dam is a hard working, tidy uddered, Junior daughter from our Sering cow family



Sire - Black Gold Manhattan 123J

HOMO POLLED NON DILUTOR FULL FLECKVIEH

- Denver is a bull you notice for his muscle shape and overall thickness
- Top ranked fleck bull at weaning
- Calving our first Black Gold Manhattan daughters and they look to be good females with neat udders



69

FAIRVIEW DENVER 165M

HOMO POLLED FULLBLOOD CA-P1492102 FDN 165M 2/2/2024

SIRE

DAM

BLACK GOLD BRYCK 73F KUZ MR COLOSSAL 427Z
BLACK GOLD MANHATTAN 123J GRINALTA'S RUTH PFF65D
BLACK GOLD MS KRISTIN 73E GRINALTA'S MISS STARWEST FF65A

PERF	BW				ACT WWT		
	86 lbs				848 lbs		
EPDS	CE	BW	WW	YW	MK	MCE	MWWT
	6.9	3.2	74.9	106.8	38.4	2.5	75.9

70

FAIRVIEW LONDON 78M

POLLED/SCURRED FULLBLOOD CA-P1499897 FDN 78M 14/1/2024

SIRE

DAM

BLACK GOLD BRYCK 73F FAIRVIEW PAYROLL 19D
BLACK GOLD MANHATTAN 123J FAIRVIEW JASMINE 77H
BLACK GOLD MS KRISTIN 73E MISS FDN 77U

PERF	BW				ACT WWT		
	92 lbs				840 lbs		
EPDS	CE	BW	WW	YW	MK	MCE	MWWT
	5.9	4.1	73.8	107.2	36.4	3	73.3

HETERO POLLED NON DILUTOR FULL FLECKVIEH

- London is a bull we've liked all along who carries good length and muscle shape
- Dam is one of our smaller cows however she did a great job weaning him at 840 lbs.
- Will sire heavy steers and daughters will be keepers



71

FAIRVIEW PRAGUE 107M

HETERO POLLED FULLBLOOD CA-P1493707 FDN 107M 18/1/2024

SIRE

DAM

BLACK GOLD BRYCK 73F BEE PHANTOM 79B
BLACK GOLD MANHATTAN 123J FAIRVIEW SALLY 117J
BLACK GOLD MS KRISTIN 73E FAIRVIEW SAVANNAH 17E

PERF	BW				ACT WWT		
	97 lbs				750 lbs		
EPDS	CE	BW	WW	YW	MK	MCE	MWWT
	4.6	5.3	72.8	106.8	35	1.3	71.4

HETERO POLLED NON DILUTOR FULL FLECKVIEH

- Prague is a stout bull with wide top and good hair
- Would work well on black or red cattle to add the blaze face and extra milk on daughters



These two flush mates are sired by MRL Sysco and out of our black baldie "Tracy" cow. There is another feature flush mate in our red division. We were fortunate to acquire Sysco semen a few years ago and it was held exclusive between just a couple breeders. His sons are always hairy, powerful bulls and the daughters are deep bodied, nice uddered females that know how to produce. Tracy is the epitome of a Simmental female. Her overall power and capacity along with her perfect udder and foot structure topped off with her fancy baldie look make her one of a kind. She has three daughters in the herd along with multiple sisters who are all the same type and kind of female. We see a bright future for these bulls and plan to use one of them in our breeding program.



Sire - MRL Sysco 14D

HOMO POLLED HETERO BLACK

- Godfather is an extremely complete bull with a big future
- Long, stout with good foot & look at me baldie face
- Will sire high quality progeny, many with a baldy face.



VIEW OUR VIDEOS!

72 FAIRVIEW **GODEFATHER** 648M

HOMO POLLED PUREBRED BPTG1492100 FDN 648M 22/1/2024

PERF	BW				ACT WWT		
	99 lbs ET				847 lbs		
EPDS	CE	BW	WW	YW	MK	MCE	MWWT
	6.4	4	80.7	116.3	26.6	2.3	67

SIRE

MRL CAPONE 130B
MRL SYSCO 14D
MRL MISS 76U

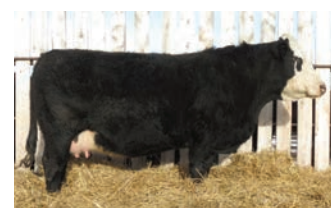
DAM

NCB COBRA 47Y
FAIRVIEW TRACY 47F
FAIRVIEW MS GRANDPRIX 47D

73 FAIRVIEW **MACHINE** 548M

HETERO POLLED PUREBRED BPTG1492099 FDN 548M 15/1/2024

PERF	BW				ACT WWT		
	98 lbs ET				788 lbs		
EPDS	CE	BW	WW	YW	MK	MCE	MWWT
	6.4	3.7	78.1	112.5	26.6	2.3	65.7



Dam - Fairview Tracy 47F

HETERO POLLED HETERO BLACK

- Declan's 4-H heifer last year is a black baldie full sib to these bulls
- Machine is moderate with wide hip and sound structure
- Daughters will be ones to build a herd around



Sire - IPU Badger 8K

HOMO POLLED HETERO BLACK

- First set of sons off IPU Badger from Labatte Simmentals, who combines calving ease and performance
- Hawk packs a lot of thickness and muscle with exceptional depth through his middle
- Dam is an tanky young Eclipse daughter with neat udder
- Solid EPDs with 12 of 13 above breed average



74

74 FAIRVIEW HAWK 70M

HOMO POLLED PUREBRED CA-BPG1499904 FDN 70M 10/1/2024

SIRE

DAM

WLB TOP TIER 456G

RENDEZVOUS ECLIPSE 366G

IPU BADGER 8K

FAIRVIEW ELISHA 90J

IPU MS RED DAKOTA 6H

FAIRVIEW ERICA 90E

PERF	BW				ACT WWT		
	103 lbs				813 lbs		
EPDS	CE	BW	WW	YW	MK	MCE	MWWT
	10.5	3.3	85	116.4	31	3.4	73.5

75 FAIRVIEW GRIZZLY 4M

HOMO POLLED PUREBRED CA-BPG1500015 FDN 4M 15/1/2024

SIRE

DAM

WLB TOP TIER 456G

CROSSROAD WARRIOR 131F

IPU BADGER 8K

FAIRVIEW DREAM 40K

IPU MS RED DAKOTA 6H

FAIRVIEW DESTINY 44E

PERF	BW				ACT WWT		
	90 lbs				826 lbs		
EPDS	CE	BW	WW	YW	MK	MCE	MWWT
	8.6	3.7	87	118	31.9	4.2	75.4

HOMO POLLED HETERO BLACK

- Grizzly has deep rear quarter, loose made with great hair
- Dam has another Badger bull calf at side this year and he is already turning heads
- Grand dam is a favorite cow and dam of lot 77



75

76 FAIRVIEW KODIAK 161M

HOMO POLLED PUREBRED CA-BPG1500013 FDN 161M 18/1/2024

SIRE

DAM

WLB TOP TIER 456G

RENDEZVOUS ECLIPSE 366G

IPU BADGER 8K

FAIRVIEW EVERLEE 161K

IPU MS RED DAKOTA 6H

FAIRVIEW ELIZABETH 61E

PERF	BW				ACT WWT		
	89 lbs				776 lbs		
EPDS	CE	BW	WW	YW	MK	MCE	MWWT
	10.9	3	84.2	117.2	28.2	5.6	70.3

HOMO POLLED HETERO BLACK

- Moderate, soft made bull with unique look
- Dam is a moderate, tanky Eclipse daughter with baldie face
- A numbers guy – all EPDs above breed average with many well above average



76

SIMMETNAL



Sire - Fairview Scorpion 52K



HOMO POLLED HETERO BLACK

- Steel carries extra rib shape, a wide top and big hip
- Sire was a feature in 2023 sale and we were able to use him on a few cows that spring
- These Scorpion sons bring calving ease with performance & are full of meat and muscle
- Dam is a tanky Grand Prix daughter with an ideal udder. She has three daughters working in the herd

77 FAIRVIEW STEEL 40M

HOMO POLLED PUREBRED CA-BPG1499890 FDN 40M 16/1/2024

SIRE

FAIRVIEW SHERMAN 61H
FAIRVIEW SCORPION 52K
KWA MS VEGAS 252F

DAM

ERIXON GRAND PRIX 125A
FAIRVIEW DESTINY 44E
FAIRVIEW MS REDSTREAM 23B

PERF	BW			ACT WWT		
	91 lbs			821 lbs		
EPDS	CE	BW	WW	YW	MK	MCE
	7.4	2.4	80.5	118.4	30.5	2.6

78 FAIRVIEW STRYKER 129M

HOMO POLLED PUREBRED CA-BPG1499892 FDN 129M 9/1/2024

SIRE

FAIRVIEW SHERMAN 61H
FAIRVIEW SCORPION 52K
KWA MS VEGAS 252F

DAM

BOUNDARY WYATT EARP 89D
NAC AUDREY 129G
MAR MAC COVER GIRL 115D

PERF	BW			ACT WWT		
	103 lbs			824 lbs		
EPDS	CE	BW	WW	YW	MK	MCE
	7.3	4.3	83	117.5	27.2	3.8



"The Caretaker"

Ken enjoys bedding the barns at calving time and keeping watch over the newborn calves.

HOMO POLLED HETERO BLACK

- A Scorpion son with that attractive baldie look
- Sire sold to Flying TL Simmentals in 2023 – powerful bull with huge barrel, deep quarter and wide top
- Dam is a Wyatt Earp daughter purchased from the Northern Lights program
- Stryker is big bodied, loose made with extra size and length



Sire - WS Epic E152

HOMO POLLED NON DILUTOR

- Immortal is a fall bull born to a first calf heifer who did a whale of a job on him
- Big time performance – 1003 lbs weaning weight at end of May. Weighed in at 1731 lbs early January
- True curve bending EPDs – nearly all traits in top 25% of the breed with performance in top 10%
- Sired by Epic who has been widely use in the industry
- Dam is a hard working Warrior daughter who was born into the fall program and continues there today
- Grand dam is the cornerstone female in our fall program with all daughters being top of the herd
- Immortal is impressive from every angle with his shear mass, muscle and overall power
- A bull that will have a large impact on his future herd with heavy weight sons and outstanding daughters



79 FAIRVIEW IMMORTAL 149L

HOMO POLLED PUREBRED CA-PG1493720 FDN 149L 18/8/2023

SIRE	DAM
WS ALL ABOARD B80	CROSSROAD WARRIOR 131F
WS EPIC E152	FAIRVIEW TEAGAN 149J
WS MAJESTIC Z133	FAIRVIEW TANDRA 47G

PERF	BW				ACT WWT		
	81 lbs				1003 lbs		
EPDS	CE	BW	WW	YW	MK	MCE	MWWT
	9.7	1.7	96.1	141.6	25.5	6.3	73.6

80 FAIRVIEW BOSS 348M

HOMO POLLED PUREBRED PTG1492098 FDN 348M 11/1/2024

SIRE	DAM
MRL CAPONE 130B	NCB COBRA 47Y
MRL SYSCO 14D	FAIRVIEW TRACY 47F
MRL MISS 76U	FAIRVIEW MS GRANDPRIX 47D

PERF	BW				ACT WWT		
	105 lbs				921 lbs		
EPDS	CE	BW	WW	YW	MK	MCE	MWWT
	6.4	4.2	83.5	120.3	26.6	2.3	68.4



Sire - MRL Sysco 14D

HOMO POLLED NON DILUTOR

- Full Sibling to two black baldie bulls 3 pages ahead
- Boss has been a standout Sysco son from birth with dark red colour, long body & wide top
- High performance, rugged made bull & well equipped to get the job done
- Born to an older fleck cow hence a little more birth weight. Donor dam consistently has approx 90lb natural calves
- Donor dam is ideal Simmental female – tremendous power and capacity along with exceptional udder and foot structure.
- You won't find them any darker or any better than this. Boss is certainly worth the time to check him out in person.



SIMMETNAL



Sire - Fairview Monument 12K

HOMO POLLED NON DILUTOR

- Maverick has been a standout from an early age.
- Dam is a favorite Sysco daughter – she has a Badger bull calf this year and he looks to be a good one
- Exceptional calving ease with short gestation & balanced performance
- Dark red, well balanced, deep bodied
- Sire is our Monument bull that sold in 2023 to Flying H Land & Livestock. An Epic son out of highly productive Sleep Easy daughter

81 FAIRVIEW MAVERICK 81M

HOMO POLLED PUREBRED PG1500014 FDN 81M 1/1/2024

SIRE

WS EPIC E152
FAIRVIEW MONUMENT 12K
FAIRVIEW ELAINE 10H

DAM

MRL SYSCO 14D
FAIRVIEW DIXIE 82K
FAIRVIEW DAISY 83E

PERF	BW		ACT WWT				
	75 lbs		829 lbs				
EPDS	CE	BW	WW	YW	MK	MCE	MWWT
	11.4	-0.3	78.1	113.8	26.1	4.2	65.2

82 FAIRVIEW GLADIATOR 41M

HOMO POLLED PUREBRED CA-PG1499895 FDN 41M 21/2/2024

SIRE

CROSSROAD RED WALKER 52D
CROSSROAD WARRIOR 131F
CROSSROAD ABSOLUTE 386A

DAM

FAIRVIEW PASSPORT 2E
FAIRVIEW EASTER 11G
FAIRVIEW MS GRANDPRIX 45C

PERF	BW		ACT WWT				
	104 lbs		822 lbs				
EPDS	CE	BW	WW	YW	MK	MCE	MWWT
	4.2	5.3	84.9	124.3	35.1	3.5	77.6



Sire - Crossroad Warrior 131F

HOMO POLLED NON DILUTOR

- Gladiator is long bodied, wide topped with big muscled hip and big scrotal
- Only Warrior son in the sale. Warrior is known for big time performance and daughters that raise top calves
- Dam has put 4 consecutive bulls through the sale – Little Willow Creek and M&J Farms own brothers
- Dam is dark red blaze faced fleckvieh influence cow with picture perfect udder
- Youngest bull in the group but you wouldn't know it. 2nd ranked bull for WWT



Sire - Fairview Scorpion 52K

HETERO POLLED NON DILUTOR

- Tremendous cow family – Grand dam is Tracy 47F donor female
- Dam is Carter's 4-H cow, Twila. Won Supreme Champion Female with Scout at side
- Long bodied, dark red, with deep quarter
- Blaze/baldie face runs deep in pedigree – expect it on his calves



83

FAIRVIEW SCOUT 53M

HETERO POLLED PUREBRED CA-PG1471973 FDN 53M 22/1/2024

SIRE

FAIRVIEW SHERMAN 61H
FAIRVIEW SCORPION 52K
KWA MS VEGAS 252F

DAM

WFL ABSOLUTE 51Y
FAIRVIEW TWILA 48H
FAIRVIEW TRACY 47F

PERF	BW			ACT WWT		
	104 lbs			820 lbs		
EPDS	CE	BW	WW	YW	MK	MCE
	8.8	3.2	85.7	125.1	24.5	3.5
						67.4

84

FAIRVIEW STALLION 111M

HOMO POLLED PUREBRED CA-PG1499902 FDN 111M 28/1/2024

SIRE

WLB TOP TIER 456G
IPU BADGER 8K
IPU MS RED DAKOTA 6H

DAM

CROSSROAD WARRIOR 131F
FAIRVIEW ELSA 11J
FAIRVIEW MS GRANDPRIX 45C

PERF	BW			ACT WWT		
	95 lbs			809 lbs		
EPDS	CE	BW	WW	YW	MK	MCE
	8.5	3.9	85.1	116.7	32.8	5.1
						75.4

HOMO POLLED NON DILUTOR

- Stallion is a Badger son from a deep bodied Warrior daughter
- Solid EPDs – nearly all above breed average with good performance numbers
- One of the top ranked red bulls for WW
- Masculine, meat machine with good hair & solid foot



VIEW OUR VIDEOS!



The bull feeding program is built to maximize forage utilization, gut health and as a result quality sperm production. Nutritional status of a bull, particularly from the previous 60-days, can affect the semen quality being ejaculated today. Sperm production is a continuous process and proper nutrition is critical to maintain peak fertility and longevity of bulls. Bull calves are generally developed on grass with their mom's on a quality mineral program.

Once bull calves are weaned, they are slowly moved onto a balanced TMR. The bulls are challenged with a forage-based TMR to help them develop and express their genetic potential. This is important for consistency of maturation and puberty of bull calves. Sampling and analyzing forages are important for properly balancing the overall ration. Forage quality and digestibility are important for maximizing ruminal health. Matching suitable protein sources with proper starch with the available forage sources is key to promoting lean muscle growth. The addition of organic minerals are used to ensure proper immune function and overall health of bulls. All of these factors contribute to semen quality and conception within a herd.

If you have any questions about the nutrition program, please feel free to reach out. Buy with confidence knowing the bulls have been developed on a balanced nutrition program. *Best of luck on sale day!*



Tom McNeely
Brand Manager / Co-Founder
(780) 679-7220
tomj.mcneely@bullseyefeeds.ca

© More Than Just Food

SIMMETNAL



Sire - IPU Badger 8K

HOMO POLLED NON DILUTOR

- Hard to make them any darker red than Bloodhound – dam is just as dark.
- Mid February Bull who was top ranked bull for WWT in entire group
- Big time performance numbers for WWT, YWT, MWWT & Milk
- Grand Dam was purchased from Skors Dispersal

85 FAIRVIEW BLOODHOUND 166M

HOMO POLLED PUREBRED CA-PG1500012 FDN 166M 11/2/2024

SIRE

WLB TOP TIER 456G
IPU BADGER 8K
IPU MS RED DAKOTA 6H

DAM

CROSSROAD WARRIOR 131F
FAIRVIEW STARDUST 166K
SKORS YVAINÉ 166F

PERF	BW		ACT WWT				
	97 lbs		793 lbs				
EPDS	CE	BW	WW	YW	MK	MCE	MWWT
	8.1	5.4	90.4	123	31.6	4.6	76.8

86 FAIRVIEW ASTRO 60M

HOMO POLLED PUREBRED CA-PG1491807 FDN 60M 24/1/2024

SIRE

LFE POWERSHIFT 339C
RENDEZVOUS ECLIPSE 366G
RENDEZVOUS MANDY 366D

DAM

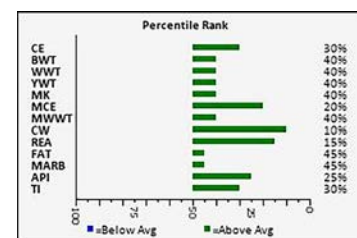
CROSSROAD WARRIOR 131F
FAIRVIEW BARBIE 58H
MISS FDN LOUISVILLE 88Y

PERF	BW		ACT WWT				
	88 lbs		832 lbs				
EPDS	CE	BW	WW	YW	MK	MCE	MWWT
	10.2	2.8	81.5	119.5	27.2	6.8	68



HOMO POLLED NON DILUTOR

- Astro is the last of the Eclipse sons to sell. Eclipse always sired hairy, beef bulls and was known for exceptional vigour at birth. Calves are up and sucking before they are licked off
- Dam is a hard working Warrior daughter who has an impressive Badger daughter at side this year
- Exceptional EPD profile with all 13 in top 3rd of the breed
- Astro is an honest power bull that may be overlooked



GOODVIEW GELBVIEH



Like us on Facebook:
Goodview Gelbvieh

Welcome to the 21st Annual Best of the Breeds Bull Sale. We are very excited about the bulls we will have on offer once again this year. We will have both red and black bulls that will work both on heifers, as well as performance bulls to produce those scale busting steers. Our bulls come from good footed, neat uddered, low maintenance cows. At Goodview we put a lot of emphasis on our cows, so you can buy with confidence knowing that the bull you purchased is from a sound, problem free cow herd.

Gelbvieh is a continental breed that has very strong maternal traits such as docility and rich milk that is produced in tight, correct udders. Gelbvieh will add that extra muscle to give your calves the extra pounds you're looking for at sale time. Gelbvieh calves are born with vigor, which is one of the reasons Gelbvieh influenced females wean more pounds of calf per cow exposed. Use Gelbvieh bulls in your crossbreeding program to get early maturing, long lasting females, as well as sale topping steer calves.

We continue to use a high fiber developer program. We wean the bulls off on oats then after 60 days they are pail fed a bull developer ration along with barley silage and grass alfalfa hay. This diet develops a healthy rumen, while maintaining good long-term health. We target a 3.5 lb. average gain to develop good footed, long lasting bulls that will last for their new owners.

Please join us on March 23 in Yorkton to evaluate our bulls and we can talk about your bull needs. If you can't make the sale, feel free to call or stop by anytime to tour the bull pen and the cows with their 2024 calves at side. Join us Saturday evening at our hotel and stay the night. If you purchase a bull from Goodview Gelbvieh, we will pay for your one-night stay. Please join us for an afternoon of visiting and cattle viewing on Sunday, March 16 for our customer appreciation day and bull viewing.

Customer appreciation day and bull viewing SUNDAY, MARCH 16 at 1:00 PM!

Blair & Lorie || Courtney, Logan & Gunnar || Kelsey & Blake

GELBVIEH BREED AVERAGES

GEST (DAYS)	EPDS	CE	BW	WW	YW	MK	TM
283		12	0.0	68	99	21	55



87

87 BLB GOODVIEW MEMPHIS 426M

Polled (Homo - P) CDGV185801 BLB 426M 1/30/2024

SIRE

DAM

SLC OUTBACK 142X RWG RIGHT COMBINATION C506
BLB GOODVIEW KINGSTON 221K FLAD FLADELAND FAME 23F
DDN BELLY RIVER FANCY 8138F FLAD FLAD FLADELAND BREW 5B

Goodview Memphis 426M was a part of our show string this fall. He stood as Reserve Grand Champion Senior Bull Calf in a very strong class. Memphis is the type of bull that we strive to produce exhibiting a big hip, lots of rib shape, beautiful skull design and dark red in color. His dam Flad 23F has been one of the most consistent producing cows in our herd, raising the high selling bred heifer at the Function & Finesse 6.0 this year, as well as a bull walking the pastures at McCoy Cattle company and JSJ Livestock. 426M is sired by BLB Kingston 221K, an outback son that we raised, who is siring offspring with hair and style.
HOMO POLLED

PERF	BW		OCT 12 WT		ADJ YWT		GEST (DAYS)					
	85 lbs		875 lbs		1226 lbs		284					
EPDS	CE		BW		WW		YW		MK		TM	
	12		12		62		84		17		48	

GELBVIEH



Goodview Magic 401M was also a part of our show string this fall, standing third behind 426M. He is a bull that we have admired since a young age. He has a long spine, is smooth made and an eye appealing bull. His damn BLB 131D comes from the Black Magic cow family. This family has been one of our most consistent producing cow families. They're easy doing one with a beautiful temperament as well. 401M's sire, Seminole Wind, is a bull we used to add a bit of calving ease. This cross turned out really nice.
HOMO POLLED HOMO BLACK

88 **BLB GOODVIEW MAGIC 401M**
Polled CDGV185778 BLB 401M 1/7/2024

SIRE	DAM
RWG EXACT COMBINATION E409	SLC SLC 202A
RWG RWG SEMINOLE WIND G430 ET	BLB GOODVIEW PLD BLACK MAGIC
RWG KITTY'S DREAM D526	BLB GOODVIEW PLD BLACK MAGIC

PERF	BW	OCT 12 WT	ADJ YWT	GEST (DAYS)		
	80 lbs	981t lbs	1193 lbs	277		
EPDS	CE	BW	WW	YW	MK	TM
	13.3	-2.1	66	85	24	57

89 **GOODVIEW MAGNUM 425M**
Homo Polled CDGV185827 BLB 425M 1/26/2024

SIRE	DAM
HL SLC MASTERPLAN 58C	FLAD FLAD FLADELAND ELEMENT 21E
RWG JUST TO COOL J416 ET	BLB GOODVIEW BROOK 30H
SLC SLC PARKLAND 31E ET	BLB GOODVIEW PLD BROOK

PERF	BW	ADJ WT	ADJ YWT	GEST (DAYS)		
	110 lbs	723 lbs	1363 lbs	285		
EPDS	CE	BW	WW	YW	MK	TM
	6	2.8	70	100	28	63



We would dream of having a whole pen like Goodview Magnum 425M. He is so wide in the hip with a huge middle, yet smooth through the front with a nice skull shape. His dam BLB 30H is a beautiful Flad Element daughter. our Element females have done very well for us. We look forward to using more of the 'Just to Cool' bull going forward so we can produce more bulls like BLB 425M.
HOMO POLLED.



SIRE - BLB GOODVIEW KOKANEE 230K

Goodview Mystic 406M is another stand out Herd Sire prospect. He is long spined and deep, with a wide base. Born to my favourite K cow BLB 225K who just happens to be the daughter of BLB 30H. It's cool how a mother and daughter can raise two of your top bulls in the pen, that says a lot about consistency. His sire BLB Kokanee 230K was purchased by Last Mountain Livestock. HOMO POLLED.



90

BLB GOODVIEW MYSTIC 406M

Polled (Homo - P) CDGV185783 BLB 406M 1/10/2024

SIRE	DAM
RWG EXACT COMBINATION E409	BLB GOODVIEW HITCH 23H
BLB GOODVIEW KOKANEE 230K	BLB GOODVIEW BROOK 225K
BLB GOODVIEW PLD MAXINE	BLB GOODVIEW BROOK 30H

PERF	BW	OCT 12 WT	ADJ YWT	GEST (DAYS)		
	94 lbs	890 lbs	1340 lbs	283		
EPDS	CE	BW	WW	YW	MK	TM
	10.7	2	76	107	22	60

91

BLB GOODVIEW MAVERICK 411M

Polled (Homo - P) CDGV185788 BLB 411M 1/15/2024

SIRE	DAM
RWG EXACT COMBINATION E409	FRL FIR RIVER DRAGON
BLB GOODVIEW KRUIZER 210K	BLB BLB GOODVIEW GEM 140J
TTG TWISTED T EXTRA CASH	TTG TWISTED T FIRST DANCE

PERF	BW	OCT 12 WT	ADJ YWT	GEST (DAYS)		
	88 lbs	865 lbs	1266 lbs	283280		
EPDS	CE	BW	WW	YW	MK	TM
	15.6	0.8	73	104	19	55



SIRE - BLB GOODVIEW KRUIZER 210K

BLB 411M is another stand out power bull in our pen. He has unreal hair, big middle, big hip and tons of growth. This bull will sire scale busting calves come fall. HOMO POLLED



GELBVIEH



92 BLB GOODVIEW **MOLSON** 438M

Polled (Homo - P) CDGV185812 BLB 438M 2/22/2024

SIRE

DAM

SLC OUTBACK 142X BLB GOODVIEW PLD STACKER 16S
BLB GOODVIEW KINGSTON 221K BLB GOODVIEW PLD LOVEBUG
DDN BELLY RIVER FANCY 8138F BLB GOODVIEW PLD LOVEBUG

PERF	BW		OCT 12 WT		ADJ YWT		GEST (DAYS)					
	108 lbs		791 lbs		1269 lbs		282					
EPDS	CE		BW		WW		YW		MK		TM	
	4.1		3		65		95		20		52	

Goodview Molson 438M deserves the attention he gets when you walk in the pen. His dam Goodview Lovebug 106D produced our high selling bull, Goodview Lincoln 310L, who is walking the pastures in North Dakota at Prairie Hills Gelbvieh. She is a massive cow that checks all the boxes who has produced many top end females working in our herd. Molson will add style as well as performance to your calf crop.
HOMO POLLED



93 BLB GOODVIEW **MERRITT** 408M

Scurred CDGV185785 BLB 408M 1/12/2024

SIRE

DAM

JRI SECRETARIAT 285E78 RWG EXACT COMBINATION E409
BLB GOODVIEW HITCH 23H BLB GOODVIEW MAXINE 1H
DDN BELLY RIVER FANCY 8138F BLB GOODVIEW PLD MAXINE 10Z

PERF	BW	OCT 12 WT	ADJ YWT	GEST (DAYS)		
	93 lbs	969 lbs	1361 lbs	286		
EPDS	CE	BW	WW	YW	MK	TM
	15.5	-0.4	74	103	22	59

BLB 408M has got to be one of the softest, big middled bulls we have raised. He jiggles when he walks. Make sure you look for him, his picture doesn't do him the justice he deserves! His dam Maxine 1H never misses. If you're looking to add performance yet not sacrifice maternal this bull will do it.



94 JSJ GOODVIEW **LUCA** 20L

Polled (not Homo - D) CDGV184898 JSJ 20L 8/26/2023

SIRE

DAM

DCSF POST ROCK POWER BUILT 37B8 JSJ CRUSH 8C
LRSF LRL DEWALT F148 JSJ JSJ HEATHER 91H
LRSF NELLIE C62 JSJ JSJ FARAH 96F

PERF	BW	OCT 12 WT	ADJ YWT	GEST (DAYS)		
	92 lbs	1088 lbs	1060 lbs	283		
EPDS	CE	BW	WW	YW	MK	TM
	10.5	-0.2	64	93	23	54

JSJ 20L is an over aged bull that we purchased along side his dam from the JSJ dispersal. He is deep with a big hip. Another bull that will add pounds to your calf crop.
EXTRA AGE

95 BLB GOODVIEW **MALONE** 445M

Polled (Homo - P) CDGV185927 BLB 445M 3/25/2024

SIRE

DAM

SLC OUTBACK 142X RWG EXACT COMBINATION E409
BLB GOODVIEW KINGSTON 221K BLB GOODVIEW MAXINE 12H
DDN BELLY RIVER FANCY 8138F BLB GOODVIEW PLD MAXINE

PERF	BW	OCT 12 WT	ADJ YWT	GEST (DAYS)		
	93 lbs	825 lbs	1244 lbs	283		
EPDS	CE	BW	WW	YW	MK	TM
	10.1	-0.4	63	82	18	49

BLB Malone 445M is a stylish Kingston son that we have liked from a young age. He is a young bull who has hit his stride and demands your attention when you walk in the pen. His dam BLB 12H is one of the prettiest cows in our herd. A lot of maternal in this bull. HOMO POLLED



96 BLB GOODVIEW **MAJOR** 407M

Polled (Homo - P) CDGV185784 BLB 407M 1/10/2024

SIRE

DAM

RWG EXACT COMBINATION E409 SLC OUTBACK 142X
BLB GOODVIEW KRUZER 210K BLB GOODVIEW PLD MAXINE
TTG TWISTED T EXTRA CASH BLB GOODVIEW PLD MAXINE 10Z

PERF	BW	OCT 12 WT	ADJ YWT	GEST (DAYS)		
	72 lbs	801 lbs	1153 lbs	273		
EPDS	CE	BW	WW	YW	MK	TM
	18.4	-1.8	64	85	20	52



BLB 407M is what you would call a curve bender. Born at just 72 lbs then gaining over 3.5 lbs a day. He will add calving ease and maternal traits to your herd. HOMO POLLED

SIRE LOT 96, 97 - BLB GOODVIEW KRUZER 210K



97 BLB GOODVIEW **MONROE** 416M

Polled (Homo - D) CDGV185793 BLB 416M 1/18/2024

SIRE

DAM

RWG EXACT COMBINATION E409 JRI HOME BREW 213W67 ET
BLB GOODVIEW KRUZER 210K HDG ESSIE 13E
TTG TWISTED T EXTRA CASH HDG HDG KASSY

PERF	BW	OCT 12 WT	ADJ YWT	GEST (DAYS)		
	80 lbs	849 lbs	1161 lbs	273		
EPDS	CE	BW	WW	YW	MK	TM
	16.1	-2.6	60	70	20	50

BLB 416M is dark red eye appealing bull. We have a good number of red power bulls in our offering. 416 is one of those bulls. HOMO POLLED



GELBVIEH



98 **BLB GOODVIEW *MUNRO* 444M**
 Polled (Homo - P) CDGV185926 BLB 444M 3/21/2024

SIRE		DAM	
SLC OUTBACK 142X	JLSL APOLLO		
BLB GOODVIEW KINGSTON 221K	BLB BLB GOODVIEW BLACK MAGIC 126		
DDN BELLY RIVER FANCY 8138F	BLB GOODVIEW PLD BLACK MAGIC		

PERF	BW	OCT 12 WT	ADJ YWT	GEST (DAYS)		
	110 lbs	766 lbs	1356 lbs	289		
EPDS	CE	BW	WW	YW	MK	TM
	7.9	1.3	72	107	19	54

BLB Munro 444M is the power black bull in our pen. He had the style and look of a herd sire from a young age. Big hip, long spined with a nice skull shape. Another bull in our offering that will put some pounds into his calves and produce some fancy daughters.
 HOMO POLLED
 HETERO BLACK



99 **BLB GOODVIEW *MIDNIGHT* 410M**
 Polled CDGV185787 BLB 410M 1/14/2024

SIRE		DAM	
RWG EXACT COMBINATION E409	RWG BUSTIN' STONES 4603		
RWG RWG SEMINOLE WIND G430 ET	BLB GOODVIEW WILMA 219K		
RWG KITTY'S DREAM D526	BLB GOODVIEW PLD WILMA 1Y		

PERF	BW		OCT 12 WT		ADJ YWT		GEST (DAYS)					
	78 lbs		793 lbs		1260 lbs		277					
EPDS	CE		BW		WW		YW		MK		TM	
	16.7		0.2		75		111		22		59	

BLB 410M is a black bull with curve bending numbers. Born with a moderate birth weight, yet gaining with the big boys. His 2 year old mom did an awesome job.
 HOMO POLLED
 HETERO BLACK



100 **BLB GOODVIEW *MAX* 400M**
 Polled CDGV188707 BLB 400M 2/1/2024

SIRE		DAM	
CUDLOBE MONUMENTAL 112H	RWG CAPTAIN C701		
CRESCENT CREEK MONUMENTAL 107K	BLB GOODVIEW BLACK MAX 223K ET		
CRESCENT CREEK ROSEBUD 164H	BLB GOODVIEW PLD MAXINE 10Z		

PERF	BWT		ADJ WWT		GEST (DAYS)	
	74 lbs	702 lbs	1193 lbs		275	
EPDS	CE	BW	WW	YW	MK	TM
	18.2	-3	60	86	22	52

BLB Max 400M is the first of our heifer bulls. Here is an opportunity that doesn't come along often out of the Goodview program, a balancer! He is sired by Crescent Creek Monumental 107K who had heifer duties at Kristjanson Farms where Maxine was walking. WOS 107K is a desirable, sleep easy heifer bull with lots of growth out of the great Crescent Creek Angus program at Goodeve! This bull is so correct in every way along with a puppy dog temperament. His dam BLB Maxine 223k has generations of calving ease in her pedigree. If you're looking for a sleep easy black heifer bull look no further. Will be DNA guaranteed.
 HOMO POLLED HEIFER BULL

101 BLB GOODVIEW **MATADOR** 428M

Polled (Homo - P) CDGV185802 BLB 428M 2/5/2024

SIRE

DAM

SLC OUTBACK 142X

JRI SECRETARIAT 285E78

BLB GOODVIEW KINGSTON 221K

DDN JADA 128J

DDN BELLY RIVER FANCY 8138F

DDN 924G ET

PERF	BW	OCT 12 WT	ADJ YWT	GEST (DAYS)		
	69 lbs	757 lbs	1129 lbs	287		
EPDS	CE	BW	WW	YW	MK	TM
	16.3	-1.7	64	83	23	55

BLB Matador 428M is our feature red heifer bull. Sired by Kingston and out of DDN 128J. This little cow has proven to have calving ease in her pedigree. 428M is smooth made with a nice square hip, just the way I like them. Make sure you give him a look and get behind him to see it, he's a cool calf. Definitely a sleep easy heifer bull.

HOMO POLLED

HEIFER BULL



102 BLB GOODVIEW **MONTANA** 437M

Polled (Homo - P) CDGV185811 BLB 437M 2/22/2024

SIRE

DAM

SLC OUTBACK 142X

FLAD FLAD FLADELAND ELEMENT 21E

BLB GOODVIEW KINGSTON 221K

BLB GOODVIEW ELITE 20H

DDN BELLY RIVER FANCY 8138F

TTG TWISTED T ELITE

PERF	BW	OCT 12 WT	ADJ YWT	GEST (DAYS)		
	77 lbs	712 lbs	1092 lbs	283		
EPDS	CE	BW	WW	YW	MK	TM
	16.4	-1.1	48	69	20	44

BLB 437M is our 3rd heifer bull candidate. His dam BLB 20H is a beauty of a cow and has consistently produced offspring with calving ease.

HOMO POLLED

HEIFER BULL



103 BLB GOODVIEW **MACK** 429M

Polled (Homo - P) CDGV185803 BLB 429M 2/6/2024

SIRE

DAM

SLC OUTBACK 142X

DTKF EMOTIONS SUCKER PUNCH

BLB GOODVIEW KINGSTON 221K

PHG MISS PAPARAZZI C45

DDN BELLY RIVER FANCY 8138F

PHG PAPARAZZI A68

PERF	BW	OCT 12 WT	ADJ YWT	GEST (DAYS)		
	87 lbs	796 lbs	1172 lbs	282		
EPDS	CE	BW	WW	YW	MK	TM
	11.7	-0.9	56	66	24	52

BLB 429M is an eye appealing dark red son of Kingston in a moderate frame. He was a calf who was a standout all summer in the pasture and has continued to carry on that role! A bull that will add maternal traits to your females.

HOMO POLLED



GELBVIEH



104 BLB GOODVIEW **MARSHALL** 427M

Polled CDGV185813 BLB 427M 2/4/2024

SIRE

DAM

RWG EXACT COMBINATION E409 BLB GOODVIEW HEADLINE 27H
BLB GOODVIEW KRAKEN 228K ET BLB GOODVIEW FAME 232K
FLAD FLADELAND CHRISTINA 19C FLAD FLADELAND FAME 23F

PERF	BW	OCT 12 WT	ADJ YWT	GEST (DAYS)		
	90 lbs	862 lbs	1311 lbs	291		
EPDS	CE	BW	WW	YW	MK	TM
	13.1	0.5	65	92	21	54

BLB 427M is a big middled bull that will sire beautiful females. The type and style the industry wants.
HOMO POLLED



105 BLB GOODVIEW **MARCO** 442M

Polled (Homo - P) CDGV185924 BLB 442M 3/17/2024

SIRE

DAM

SLC OUTBACK 142X SLC OUTBACK 142X
BLB GOODVIEW KINGSTON 221K BLB GOODVIEW PLD BLACK MAGIC
DDN BELLY RIVER FANCY 8138F BLB GOODVIEW PLD BLACK MAGIC

PERF	BW		OCT 12 WT		ADJ YWT		GEST (DAYS)					
	110 lbs		722 lbs		1181 lbs		290					
EPDS	CE		BW		WW		YW		MK		TM	
	9		3.1		56		79		20		48	

BLB 442M is a deep sided bull. He will sire those scale busting feeder calves come fall.
HOMO POLLED



106 JSJ GOODVIEW **LARGO** 57L

Polled (Homo - P) CDGV184923 JSJ 57L 10/5/2023

SIRE

DAM

SLC OUTBACK 142X ZTM MCCOY 5P SIGNATURE 178S
BLB BLB GOODVIEW JERICO 131J JSJ JSJ BEAUTY 6B
FLAD FLADELAND FAME 23F JSJ UNIQUE LADY 27U

PERF	BW		OCT 12 WT		ADJ YWT		GEST (DAYS)					
	94 lbs		966 lbs		1052 lbs		283					
EPDS	CE		BW		WW		YW		MK		TM	
	8.9		1.1		60		80		18		48	

57L is an extra age bull that we purchased along side his dam from the JSJ Dispersal. A long spined dark red bull that will be able to handle a few more cows in his first year.

HOMO POLLED
EXTRA AGE.

BLACK RIDGE ANGUS



Welcome to the 2025 bull sale, and as I write this it is snowing, blowing and cold. Old man winter has been relentless this year. This set of bulls are developing differently than the past years. They are on hay, cereal silage and pail fed barley. As of the beginning of February they receive 9lbs of barley per day. They are NOT pushed, and are developing and growing out very well. We feel they are in excellent shape to go out and breed. Feel free to call or stop by at anytime. Please also check out our facebook page for pictures, videos and updates.

*Check out the bulls on our
Black Ridge Angus Facebook Page
closer to Sale Day*

LFE BA BRAVO 389G

We purchased Bravo, the 2020 lead off high selling Black Angus bull from Lewis Farms. He was 5 last summer when he was out breeding, and he moved like a cat, and still with perfect feet. He has an impressive spread of an 80lb birth weight to 1537lb yearling weight, and is in the top 5% of the breed for scrotal. He is long, thick with large testicles, and he has passed that down to his calves.



107

BLACK RIDGE BRAVO 27M

2399357 MJ0 27M 2/25/2024

SIRE

DAM

COLEMAN BRAVO 6313
LFE BA LEWIS 389G
LFE BA PRISSEY 622D

BLACK RIDGE BULLS EYE 3B
BLACK RIDGE BLACKCAP 27F
BLACK RIDGE BLACKCAP 27C

PERF

BW

OCT WWT

88 lbs

810 lbs

EPDS

CE

BW

WW

YW

MCE

MILK

-1

4.7

58

106

7

22

A real standout, a favorite all year long by many. This guy is big, flashy, hairy, easy fleshing and has tonnes eye appeal. His previous two brothers have sold through this sale to King Corner Farms and Birch Lake Ranch. His dam is getting it DONE raising the good ones.

BLACK ANGUS



108

BLACK RIDGE **BRAVO** 14M

2404396 DUM 14M 3/4/2024

SIRE	DAM
COLEMAN BRAVO 6313	BLACK RIDGE RIOT 26D
LFE BA LEWIS 389G	BLACK RIDGE IDA 14H
LFE BA PRISY 622D	BLACK RIDGE IDA 14A

PERF	BW				WWT	
	92 lbs				656 lbs	
PE EPDS	CE	BW	WW	YW	MCE	MILK
	-5.0	5	55	98	-	-

A bull that has a big old middle, butt, excellent hair, bone and a big foot. Just a real solid bull with large testicles. He descends from a cow family with longevity, structure and perfect udders. Keep this guys daughters.



109

BLACK RIDGE **BRAVO** 25M

2369868 DUM 25M 1/16/2024

SIRE	DAM
COLEMAN BRAVO 6313	SITZ UPWARD 307R
LFE BA LEWIS 389G	BLACK RIDGE LEONA 25F
LFE BA PRISY 622D	BLACK RIDGE LEONA 152Y

PERF	BW				WWT	
	90 lbs				880 lbs	
EPDS	CE	BW	WW	YW	MCE	MILK
	1	3.7	55	102	6	22

This guy has a solid mom who calves early, has a beautiful udder, and is a real no miss cow. Heaviest weaned bull this fall, is a top bull in the pen, excellent hoof, great hair and lots of middle. Brothers have sold to Lana Graham and Linsley Horvath.



110

BLACK RIDGE **BRAVO** 33M

2369944 MJ0 33M 2/1/2024

SIRE	DAM
COLEMAN BRAVO 6313	WHITSTONE WIDESPREAD
LFE BA LEWIS 389G	BLACK RIDGE BARBARA 33G
LFE BA PRISY 622D	BLACK RIDGE BARBARA 33D

PERF	BW				WWT	
	90 lbs				755 lbs	
EPDS	CE	BW	WW	YW	MCE	MILK
	1	3.3	54	99	8	20

Full brother to our top selling bull last year, very similar to his brother, a bull full of power and style. His dam is an own daughter of Whitestone Widespread, so a neat twist to the pedigree. A female that has a beautiful udder, keeps her condition, and raises a top notch calf.

111

BLACK RIDGE BRAVO 9M

2404397 DUM 9M 3/2/2024

SIRE

COLEMAN BRAVO 6313
LFE BA LEWIS 389G
LFE BA PRISY 622D

DAM

PEAK DOT IRON MOUNTAIN 781Y
BLACK RIDGE RUBY 109B
BLACK RIDGE RUBY 109Y

PERF**BW****WWT**

92 lbs

706 lbs

EPDS**CE****BW****WW****YW****MCE****MILK**

A bull that has been noticed ALL year long. This guy is very wide across the top, long, super hairy, big belly and very quiet too. These Bravo sons are peas in a pod.



112

BLACK RIDGE BULL 41M

2369992 MJ0 41M 3/10/2024

SIRE

COLEMAN BRAVO 6313
LFE BA LEWIS 389G
LFE BA PRISY 622D

DAM

BLACK RIDGE BULLS EYE 3B
BLACK RIDGE BLACKCAP 41E
BLACK RIDGE BLACKCAP 281Z

PERF**BW****WWT**

85 lbs

680 lbs

EPDS**CE****BW****WW****YW****MCE****MILK**

2

3.5

50

93

9

17

This bull's dam catches everyone's attention, during our Angus tour she made a few friends. She is a moderate hairy wedge shaped female. This guy is a real tank in the pen, big old middle, hair and eye appeal.



113

BLACK RIDGE BOOT JACK 16M

2399359 MJ0 16M 3/8/2024

SIRE

COLEMAN BRAVO 6313
LFE BA LEWIS 389G
LFE BA PRISY 622D

DAM

BLACK RIDGE BELIEVE 142E
BLACK RIDGE BARBARA 33H
BLACK RIDGE BARBARA 33W

PERF**BW****WWT**

89 lbs

680 lbs

EPDS**CE****BW****WW****YW****MCE****MILK**

1

3.3

59

108

3

24

This guy's dam is a favorite around here. She is a no miss cow with all of her son's ending up in this sale. Two years ago her son was our high seller going to Flaman Cattle, and last year's calf sold to Lana Graham. We calve later and this guy will be just a little over 12 months on sale day.



BLACK ANGUS



114

BLACK RIDGE BRAVO 32M

2369873 DUM 32M 2/1/2024

SIRE	DAM
COLEMAN BRAVO 6313 LFE BA LEWIS 389G LFE BA PRISY 622D	RING CREEK BIG SPLIT 11Y BLACK RIDGE LEONA 32C BLACK RIDGE LEONA 52W

PERF	BW				WWT	
	86 lbs				656 lbs	
EPDS	CE	BW	WW	YW	MCE	MILK
	4	2.6	49	94	9	20

A solid bull out of a solid cow, she has been around 10 years, is raising her 9th calf. Longevity in this cow family, one can go back several generations and these cows stay around and produce into their teens.



MCCRAES DEWALT 428G

This bull is a moderate beef machine, low to the ground with an excellent foot under him. A small angus head, packs a big set of nut. An athletic bull that has been used on a section of rocky pasture with 80 cows and never loses weight. He sires deep middled heavily muscled bull calves which are impressive.



115

BLACK RIDGE DEWALT 47M

2404398 MJ0 47M 3/12/2024

SIRE	DAM
S A V RESOURCE 1441 MCRAE'S DEWALT 428G MAR MAC CASSIDY 152A	SAV RESOURCE 1441 BLACK RIDGE INDI ANNA 47D BLACK RIDGE INDIANNA 74W

PERF	BW				WWT	
	93 lbs				805 lbs	
PE EPDS	CE	BW	WW	YW	MCE	MILK
	15	2.4	44	89		

A mid march calf who will be just over 12 months at sale time. A very thick bull with hair, middle and and butt. These Dewalt calves are easy keeping bulls and the daughters are making attractive females.



116

BLACK RIDGE DEWALT 40M

2404399 MJ0 40M 3/11/2024

SIRE	DAM
S A V RESOURCE 1441 MCRAE'S DEWALT 428G MAR MAC CASSIDY 152A	SAV NET RESULT 7504 BLACK RIDGE GEORGINA 142A BLACK RIDGE GEORGINA 142T

PERF	BW				WWT	
	86 lbs				760 lbs	
EPDS	CE	BW	WW	YW	MCE	MILK
	10	23	52	96		

This bull and MJ0 54M (Lot 117) are the grandson's of MJ0 142T. A cow we raised who became an elite dam and then we flushed. A well balanced March calf with an excellent hair coat. If you are looking to keep replacement females, this is YOUR guy.

BOSS LAKE BONIFIDE 722E

We saw this bull at Agribition many years ago and were impressed with him and his dam, a donor cow for Boss lake . She is a Tiger daughter out of the Echo cow family of Hamilton Farm, and when bull shopping, the dam is a very important piece of the puzzle



117

BLACK RIDGE BONAFIDE 54M

2369951 MJO 54M 2/1/2024

SIRE

DAM

S A V PEDIGREE 4834
BOSS LAKE BONAFIDE 722E
HF ECHO 206Y

SAVNET WORTH 4200
BLACK RIDGE GEORGINA 1K
BLACK RIDGE GEORGINA 142T

PERF	BW				WWT	
	92 lbs				725 lbs	
EPDS	CE	BW	WW	YW	MCE	MILK
	-9	6	60	100	-2	23

This bull is out of Lane's 4H cow, who is an actual daughter of Net Worth. We showed her at Agribition as a bred heifer and she placed 3rd in class. This bull has really turned on the jets and is big, thick, wide and performance packed. If you are looking for a bull with a different pedigree and gas in the tank, this is your guy.



117

118

BLACK RIDGE BONAFIDE 2M

2369888 DUM 2M 2/14/2024

SIRE

DAM

S A V PEDIGREE 4834
BOSS LAKE BONAFIDE 722E
HF ECHO 206Y

BLACK RIDGE BULLS EYE 3B
BLACK RIDGE LEONA 2E
BLACK RIDGE LEONA 52P

PERF	BW				WWT	
	81 lbs				715 lbs	
EPDS	CE	BW	WW	YW	MCE	MILK
	-4	5.3	57	94	5	19

This bull is a twin, but was raised by himself on his dam. Another big performance bull with hair, bone, nuts in an easy fleshing package. You will definitely find him on sale day.



118

119

BLACK RIDGE CAPITAL 92M

APPLIED FOR MJO 92M 02/17/2024

SIRE

DAM

LD CAPITALIST 316
S A V EARLY ARRIVAL 0903
S A V BLACKCAP MAY 3525

MCRAE'S DEWALT 428G
BLACK RIDGE LEAH 92K
BLACK RIDGE LEAH 92F

PERF	BW				WWT	
	83 lbs				656 lbs	
EPDS	CE	BW	WW	YW	MCE	MILK

Heifer bull here, out of the AI sire Early Arrival and a 1st calf heifer. She sure did a great job on her 1st calf. A moderate bull with great shape.



SIRE OF 119

BLACK ANGUS



120 BLACK RIDGE **NET WORTH** 6M

2369973 MJO 6M 2/12/2024

SIRE

S A V 8180 TRAVELER 004
S A V NET WORTH 4200
S A V MAY 2410

DAM

PEAK DOTENCORE 884X
WILLOWVIEW PEARL 6Z
WILLOWVIEW PEARL 3X

PERF	BW				WWT	
	76 lbs				715 lbs	
EPDS	CE	BW	WW	YW	MCE	MILK
	8	1.7	45	82	8	26

Heifer bull, with only a 76lbs birthweight and an interesting pedigree to boot. His sire was born 21 years ago and his dam is on her 12th calf.

SIRE OF 120

Thank You TO OUR 2024 BUYERS

4G ACRES
AKS RANCH
ALBERT'S HOMESTEAD FARM
ANDERSON CATTLE CO
BARRY & LORNA KUSLER
BAUER FARMS
BENHOLME FARM
BERNIE & SHARON HARMS
BIBLOW AG VENTURES INC
BINSAUER CORRAL CLEANING
BIRCH LAKE RANCH LTD
BOGGY CREEK FARMS LTD
BORDERIDGE GELBVIEH
BOWES FARMS LTD
BUICK FARMS LTD
CAMERON & LEANNE KIRZINGER
CODY & JAMIE MEYERS
COOLEY FARMS
CREEKRIDGE FARMS LTD
DARREN & LORI SHINDLE
DARREN DIETRICH
DEER HAVEN RANCH
DEREK SHANKOWSKY
DIAMOND HORSESHOE RANCH
DICKSON FARM VENTURES
DWAYNE & SHELLY/DUSTIN/DEVON BURBACK
DWAYNE KARDYNAL
EDISON LIVESTOCK
EILEEN GAYE

EVAN INGRAM
FLAMAN CATTLE CO
FLYING TL/TRIANGLE 33 SIMMENTALS
FOX HILLS FARM LTD
GAMACHE SIMMENTALS
GARRY HOEHN
GERALD LAWRENCE
GILBERT MOORE
GOLLINGS CHAROLAIS
GREG DAVEY
HAFFNER FARMS
HANS KELLER
HOLLANDY FARMS/DOUBLE C RANCH
HULL FARMS
IRVIN WESSING
IVAN & SANDRA HILLIER
J 9 RANCH
JASON & KERRIE ECKEL
JASON GOUDY
JASON LASOTA
JEFF FOGG
JEFF/TRAVIS SCHMIDT
KAIDEN BAUMUNG
KEEP RANCH LTD.
KEI DEY ACRES
KEN LINK
KORCHINSKI FARM
LA FERME PATRY DE WEEDON
LANA GRAHAM

LARRY/KEEGAN/TREVOR BENKO
LAZY G LIVESTOCK
LEE & JACKIE WATSON
LEECH LAKE FEEDERS LTD
LINDSAY HORVATH
LUKAS ZIOLA
MAPLE VALLEY FARMS
MARRANDA FARMS
MARVIN/CHARLENE LANG
MICHAEL KINDIAK
MONTE/DORAN/RHYS FRICK
MURRAY W SHOWDRA
NAHACHEWSKY CHAROLAIS
NIC NAT FARM
ORTHNER LAND & CATTLE LTD
RALPH STACHURA
RODNEY MCLEAN
RPS GELBVIEH
SHAUN TAMME
SILVER CATTLE COMPANY
STACHURA FARMS
STAN MORRIS
T3 RANCH
TGJ CATTLE COMPANY
TRADEWINDS CHAROLAIS
VERTICAL EDGE GENETICS
WAYNE KRZAK

Thank you
TO OUR SPONSOR
FOR THE BUYERS DRAW



Al McKim

Operations Manager - Humboldt & Saskatoon

amckim@masterfeeds.com

Phone: 306-682-2668 // 1-800-747-9186

Cell: 306-231-7334 // Fax: 306-682-2757

Box 1600, Humboldt, Saskatchewan, Canada S0K 2A0



*A Canadian Tradition of
Animal Nutrition Solutions*

*Une tradition Canadienne de
solutions en Nutrition Animale*

NOTES

TERMS AND CONDITIONS

Terms:

The terms of the sale are cash or cheque, payable at par at the sale location. The right of property shall not pass until after settlement has been made; no invoicing on buyers in attendance, unless previous arrangements have been made. Every animal sells to the highest bidder and in cases of disputes, the auctioneer's decision will be final. Current exchange rates will be announced sale day. All monies are in Canadian funds.

Bidding:

Each animal will sell to the highest bidder. In the case of a dispute, bidding will be reopened between the parties involved in the dispute. If no further bidding is made, the buyer will be the person from whom the auctioneer accepted the last bid. The auctioneer's decision on all disputes will be final.

Announcements:

All announcements made from the auction block will take precedence over the printed matter in the catalogue. Buyers are therefore cautioned to pay close attention to such disclosures.

Breeder's Guarantee:

Should any bull fourteen (14) months of age or over fail to prove a breeder after being used on females known to be breeders, the matter shall be reported in writing to the seller within six (6) months following the date of purchase or six (6) months after the bull has reached fourteen (14) months of age. The seller will have the right and privilege of six (6) months to prove the bull a breeder. No guarantee is given that semen collected from the bull will freeze.

Exception Guarantee:

In cases where the animal is subjected to any hormonal or surgical reproduction techniques after the sale, this guarantee shall be null and void.

Certificate of Registration:

Each animal will carry papers issued by the Canadian Charolais, Angus, Simmental, and Gelbvieh Associations.

A certificate of registry duly transferred will be furnished to the buyer for each animal after payment has been made.

Pedigree Estimates

Pedigree Estimates (PE) are created on the projected mating of the animal's sire and dam based on averages of the two, creating estimated values that do not hold the same accuracy of actual EPDs issued from the association and should be used as such.

Health:

All animals in the sale have met all necessary health requirements.

Liabilities:

All persons attend the sale at their own risk. The seller, facility owner and sale manager assume no liability, legal or otherwise, for any accidents that occur. It is understood that T Bar C Cattle Co. (2013) Ltd. is acting only as a medium between buyer and seller and is not responsible for any failure on the part of either party to live up to his obligations. Neither does T Bar C Cattle Co. (2013) Ltd. assume any financial obligations to collect or enforce collection of any monies between parties and any legal action that may in exceptional cases be taken must be between the buyer and the seller. T Bar C Cattle Co. (2013) Ltd. assumes no responsibility for any credit extended by the seller to the buyer. The buyer must look to the seller for fulfillment of all guarantees and representations made here under.

Rights & Obligations:

The above terms and conditions of the sale shall constitute a contract between the buyer and seller and be equally binding to both. Resale of animals following purchase in this sale shall constitute a separate transaction and the rights and obligations of the two parties connected thereto are not covered by the terms and conditions of this sale.

Phone, Mail, Wire Bids:

Bidders unable to attend the sale may phone, wire or mail their bids and instructions to the sale managers, auctioneer or special representatives. Bids must be received in sufficient time prior to the sale.

Delivery:

We will assist in making transportation arrangements outside MB and SK. All costs are the responsibility of the buyer. You may be asked to take your bull early if the truck is in your area. Each animal becomes the risk of the purchaser as soon as sold.

Insurance:

Will be available sale day. We strongly recommend that insurance is purchased for full value.

Errors:

All announcements at sale time, written or oral, supersede any written material in the catalogue.

Return Undeliverable
Canadian Addresses To:

T Bar C Cattle Co. Ltd.
Box 2330
Warman, SK S0K 4S0



THE BEST OF THE BREEDS

Created by:

