



ALLSTAR

ANGUS SALE 11.29.2024 REGINA SK



Chris Poley
306-220-5006



Shane Michelson
403-363-9973



Ben Wright
519-374-3335



Levi Rimke
204-851-4515

PHONE NUMBERS

AUCTIONEER
CHRIS POLEY 306-220-5006

ONLINE BIDDING AVAILABLE
MARK SHOLOGAN 780-699-5082



RINGSIDE
BEN WRIGHT 519-374-3336
SHANE MICHELSON 403-363-9973
LEVI RIMKE 204-851-4515

SALE MANAGEMENT
T BAR C CATTLE CO
306-933-4200
OFFICE@TBARC.COM

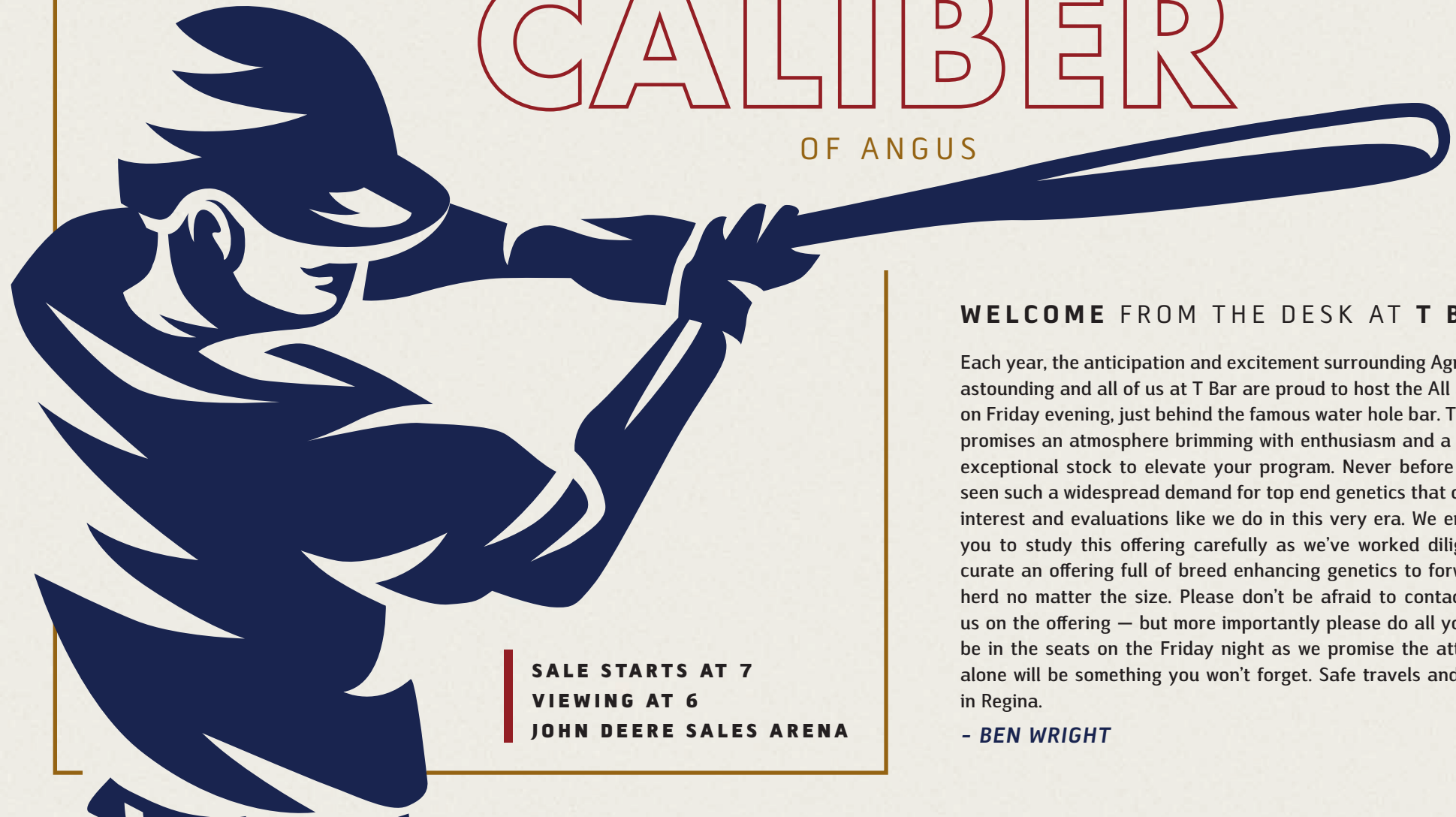


EVERY YEAR, THE ALL STAR ANGUS SALE

exclusively PRESENTS THE

HIGHEST CALIBER

OF ANGUS



**SALE STARTS AT 7
VIEWING AT 6
JOHN DEERE SALES ARENA**

WELCOME FROM THE DESK AT T BAR C

Each year, the anticipation and excitement surrounding Agribition is astounding and all of us at T Bar are proud to host the All Star Sale on Friday evening, just behind the famous water hole bar. This event promises an atmosphere brimming with enthusiasm and a lineup of exceptional stock to elevate your program. Never before have we seen such a widespread demand for top end genetics that command interest and evaluations like we do in this very era. We encourage you to study this offering carefully as we've worked diligently to curate an offering full of breed enhancing genetics to forward any herd no matter the size. Please don't be afraid to contact any of us on the offering — but more importantly please do all you can to be in the seats on the Friday night as we promise the attendance alone will be something you won't forget. Safe travels and see you in Regina.

- BEN WRIGHT

DMM

CONTAGIOUS 40M

MALE | 2361424 | DMM 40M | 08/01/2024

SIX MILE FORT KNOX 27F DMM STACK 8D
DMM GT LAST CALL 200J DMM BLACKCAP ESSENCE 31F
YOUNG DALE KRISTINA 31D DMM BLACKCAP ESSENCE 50C

BW: 90 lbs. Sept. 6 WW: 960 lbs.



DMM MISS ESSENCE 31F



DMM GT LAST CALL 200J



LOT 1

MILLER WILSON ANGUS

Build the cowherd right. Make them really maternal, structurally sound with some power and the bulls will come along.

DMM Contagious 40M is the product of that theory. He has three exceptional donors up close in his pedigree. His dam is a lovely, expansive ribbed female with outstanding feet.

If you want true base with muscle and eye appeal then Contagious is your guy. He's one that is naturally really upheaded and attractive with an excellent head. He stands on a really good foot with lots of heel. The neat thing is he's got a pedigree that's unique too.

Contagious has had a strong summer and early fall show season being Bull Calf Champion three times and a Reserve Grand Champion. His sire, DMM GT Last Call, has sired several show winners across Canada in his first calf crop.

We think there is a tremendous future for this calf. *We are retaining 1/3 semen interest.*

RED JJL

COPPER 425M

MALE | 2356152 | JJL 425M | 23/01/2024

RED JRA ESCALADE 76A	RED WHEEL LANDSLIDE 90F
RED FLYING K ESCALADE 116J	RED JJL FANCY 11H
RED FLYING K CHARITY 218C	RED JJL FANCY 37E

BW: 0.3 WW: 40 YW: 70 MCE: 3.0 MILK: 25

MATERNAL SIBLING



RED JJL FANCY 13K

DAM



RED JJL MISS DEAL 11H

SIRE



RED FLYING K ESCALADE 116J

FULL SIBLING



RED JJL ESCALADE 21L



RED JJL COPPER 425M



LOT 2

JJL LIVESTOCK

We are incredibly proud of this young herd sire prospect, from the ground up he is made right. This calf stands four corners square; his foot and heel structure are exceptional. He carries the broad masculine head of a herd sire and is already showing adequate scrotal and maturity we look for in our herd bulls. To that you can add that great dark cherry red color we have worked hard to embed into our cow herd.

Behind him is his no-nonsense, no-frills dam Red JJL Fancy 11H. She is a cow with longevity and consistency bred into her and she hasn't missed a step raising three solid calves to date. His Sire, Red Flying K Escalade 116J, was selected to give us that consistent middle weight calving ease option and he has done that extremely well, averaging 83lbs on both his bull and heifer calves on the ground.

If you have any questions or would like to stop in and view Red JJL Copper 425M along with his Sire and Dam, don't hesitate to give us a call anytime.

JJL Livestock would like to retain 50% semen rights as well as the right to in herd use semen at buyers convenience and our expense.

ARDA FARMS & FREEWAY ANGUS PICK OF THE

2025 HEIFER CALVES

LOT 3

ARDA FARMS & FREEWAY ANGUS

It is our distinct pleasure to offer the pick of our 2025 heifer calves.

We have always emphasised maternal power and function in our herd and pride ourselves on longevity and soundness as our cattle continue to produce top quality genetics. With over 200 heifers to select from we are confident you will find just what you are looking for. Natural, AI and embryo calves will be on offer. Sired by proven herd bulls and promising young sires including Arda Big Iron 523K, Arda Big Iron 563K, LT Grand Junction 3183 and more.

We welcome tours of the herd anytime prior to the sale.

Selection process to be completed at the end of October 2025.



ARDA BEAUTY 41J



ARDA BEAUTY 41J [AS CALF]



ARDA BEAUTY 73D



ARDA MR. TIBBS 322E

INCLUDING CALVES SIRED BY



ARDA **BIG IRON** 563K



LT **GRAND JUNCTION** 3183



ARDA **BIG IRON** 523K



ARDA **BEAUTY** 340M

FIND YOUR NEXT
Feminine
POWERHOUSE
OVER 200 HEIFERS TO CHOOSE FROM

SPRING COVE

GRANT 200K

SEMEN LOT | 2357338 | IMP 200K | 11/09/2022

SITZ ACCOMPLISHMENT 720F	SPRING COVE RENO 4021
SITZ FEAT 729H	SPRING COVE CAROL 811
SITZ SITZ FOREVER LADY 12F	SPRING COVE CAROL 655

CE: 8.0 BW: -0.3 WW: 81 YW: 140 MCE: 11.0 MILK: 26

LOT 4A-J

BLAIRSWEST/MJT



Introducing **Spring Cove Grant 200K**, the \$400,000 all-time record seller of the historic 105-year-old Spring Cove Ranch. Selected by the partnership of Lindskov's LT Ranch and Montana Ranch, and brought to you in Canada by MJT Cattle Company & Blairswest Land & Cattle. Grant 200K not only checks every box, he is a generational sire for the traits impactful for profitability in today's beef business.

Whether it's siring the productive and efficient kind of cows that keep ranchers in business or the steers that gain and grade, there are very few bulls that are genuinely **OPTIMUM** and **BALANCED** for each segment of the beef industry. Grant 200K is the **ONE**.

Backed by generations of proven and productive dams, Grant 200K is from a dam earning a progeny WR of 3-110 and YR 3-106 in a practical and real-world environment. Possessing the right kind of growth curve needed by commercial ranchers with WW and YW in the top 15% balanced with top 25% moderated MW and top 35% \$EN, Grant also excels for convenience traits with rankings: 2% \$M; 3% \$W; 10% CED; 15% \$Claw; 20% BS; 25% HP and 30% CED.

This will be the only semen offered for sale in Canada for the 2025 breeding season. Packages can not be split. Each buyer will be given a sire authorization at the CAA. Semen Located at AltaGenetics



Kate Roberts



- 4A 1 PACK OF 10 STRAWS
- 4B 1 PACK OF 10 STRAWS
- 4C 1 PACK OF 10 STRAWS
- 4D 1 PACK OF 10 STRAWS
- 4E 1 PACK OF 10 STRAWS
- 4F 1 PACK OF 10 STRAWS
- 4G 1 PACK OF 10 STRAWS
- 4H 1 PACK OF 10 STRAWS
- 4I 1 PACK OF 10 STRAWS
- 4J 1 PACK OF 10 STRAWS



While it was easy to find Grant on paper with EPD's that are unmatched for the balance of growth and moderated mature size, combined with heifer-safe birth weight and added marbling, it was the productive cow line that really drew me in. And when I saw Grant on the hoof, he hit me hard. From his ideal type and structural soundness to his muscle, masculinity, presence and breed character, I knew we had found the outcross sire the beef industry desperately needs."

— David Brown, Montana Ranch



HF

ROSEBUD 92M

FEMALE | 2367121 | HAMI 92M | 16/01/2024

ELLINGSON RANGELAND	SCHIEFELBEIN SHOWMAN 338
ELLINGSON HI-RANGE 1356	HF ROSEBUD 176H
EA EMBLYNETTE 9473	HF ROSEBUD 91D

BW: 65 lbs. Oct 15 Wt: 935 lbs. | BW: -0.7 WW: 71 YW: 127 MCE: 10.0 MILK: 28



DAM ROSEBUD 176H



SIRE HI-RANGE 1356



PATERNAL SIB ROSEBUD 33L



LOT 5

HAMILTON FARMS

The Rosebud cow family is one of the most influential families in our herd. HF Rosebud 92M is all about predictability and genetic consistency. Rosebud 92M could easily walk in and surpass her dam's and granddam's footsteps. Rosebud 176H is a beautifully patterned female sired by Schiefelbein Showman, who has sired more high dollar cattle and semen than any sire we have ever experienced to date. The mating of Schiefelbein Showman and Ellingson Hi-Range blew the doors off the sale barn in the Hamilton Farms Bull & Female Sale 2024.

Hi-Range is not only exclusive but an outcross, he is the definition of a calving ease specialist with growth and power to boot, a true game changer!

He had twenty three sons that averaged \$30,630.00 at the recent Hamilton Farms Sale 2024, and a daughter topped the Canadian Western Agribition Sale 2023 at \$50,000.00 purchased by Mainstream Genetics.

A Hi-Range bull calf, HF Hi-Country 7L, topped the Hamilton Farms Sale 2024 for \$185,000.00 going to River Valley Cattle Co., Strongbow Farms, Peak Dot Ranch and Hamilton Farms.

A maternal sister to 176H is the dam of HF ProStar 97L, the second high selling bull in Hamilton Farms Sale 2024 for \$85,000.00 going to SW Cattle Co and Tyson Rasmuson. Another full sister to 176H sold as a bred heifer in the Angus Collection 2023 Sale for \$25,000.00 going to Grand River Angus.

A full brother to Rosebud 176H will lead the show string heading to Agribition 2024.

The repeatability of this female is worth taking a long look at.

Miss

BAR-H

EVERGREEN

113L

FEMALE | 2344633 | AHPC 113L | 03/05/2023

S A V SENSATION 5615 KR CASH CI 4602
HOFFMAN SENSATION 803 BAR-H BLACKBIRD 189E
 C A BRILL MISS EVERGREEN 101 BH ROLLETTE 34T

BW: 77 lbs. ADJ WW: 738 lbs. | BW: 2.1 WW: 51 YW: 91 MCE: 9.0 MILK: 24



SHE IS SIMPLY

Exceptional

IN EVERY WAY

LOT 6

BAR H LAND & CATTLE CO.

- This year we wanted to throw our best into the All-Star Angus sale at Canadian Western Agribition, and I think we're doing just that. BAR-H Miss Evergreen 113L, I could sit here and throw all the verbage and descriptive adjectives into these footnotes and it still wouldn't meet the criteria to tell you how good this female really is. She is so square and fluent in terms of her build. Her neck ties so neatly & elegantly on the top side of her blade which remains perfectly smooth to the base of her shoulder. Her chest remains tucked up and tidy and progresses back into a maternal sweep of depth in her center body all the way back to her rear rib & flank. Lastly, her hip and hind leg build are simply just that good. If you're looking to build off a female I think this is the one to do it with.
- The Hoffman Sensation 803 daughters are hard to miss when touring through cows at home. They all possess the udder and foot quality that take progressive seedstock operations to the next level. Along with the amazing phenotype to boot!
- *Selling 1/2 interest, no possession. Flushing will be done alternately with buyer getting first flush. Marketing and further showing expenses to be shared 50/50 at cost. All natural calves will be shared 50/50. Bar-H will not charge for maintaining the female or her natural calves.*
- **A.I Bred safe to EXAR Redemption 2612B on April 23rd Exposed to EXAR Redemtion 2612B May 1 to June 1.**

HLC

BARBARA 439M

FEMALE | 2373076 | CHD 439M | 05/02/2024

S A V NATIONAL ANTHEM 5740	HLC GRIT 310F
HLC CSI NATIONAL ANTHEM 668H	HLC BARBARA 793H
BAR-E-L ERICA 74A	HLC BARBARA 305F

BW: 4.4 WW: 56 YW: 93 MCE: -2.0 MILK: 29

LOT 7

HOLLINGER

The Barbara cow family has been one of the most consistent highest producing cow families we have had the pleasure to breed. They are sound structured, perfect uddered and attractive in their design. 439M is one of our favourites, sired by National Anthem, a full sib to Erica 561G who has been the most influential females in our program in recent years. National Anthem, the sire of 439M, is a bull that has produced an exceptional set of calves both male and female. They possess exceptional eye appeal with a ton of growth and the maternal qualities the Erica cow family is known for. 439M is one we think a lot of, the combination of the Barbara and Erica cow families I believe will be a no miss combination.



GRYLLS

ROSEBUD

2426M

FEMALE | 2383344 | NJG 2426M | 07/02/2024

PVF INSIGHT 0129	HLC KNIGHT 679H
PVF BLACKLIST 7077	GUTZKE ROSEBUD 27K
PVF BLACKBIRD 3070	WIWA CREEK ROSEBUD 1757

BW: 75 lbs. ADJ WWT: 757 lbs. | BW: 3.4 WW: 64 YW: 104 MCE: 5.0 MILK: 20

SHE SHINES FROM EVERY ANGLE



LOT 8

GRYLLS CATTLE COMPANY

We are privileged to be a part of the Agribition All Star Sale again this year. The heifer calf we have consigned is not an easy one to part with. Her ability to demand your attention in the pen when you walk in is second to none. ROSEBUD is elite from the ground up. From her picture perfect feet and legs, to her big swooping middle, all the way to her chiseled front end, she is one you are drawn to.

Her Dam Gutzke Rosebud 27K was purchased out of this very sale in 2021 and has gone above and beyond raising 2426M, weaning off at an impressive 757lbs as a 2yo. Her dam goes back to the great PLUM CREEK PRETENTIOUS 4011 who holds a very special place in our herd. One of her greatest accomplishments was being crowned Reserve National Champion Female as a bred heifer in 2015. There is no doubt about it that ROSEBUD has maternal POWER.

Her sire PVF BLACKLIST 7077 is an incredibly stout, athletic individual, who offers tremendous rib shape and dimension in a powerfully balanced package. The granddam of Blacklist is the famous 645 cow, whose many accomplishments include producing the 2017 NJAS Grand Champion Female. Show royalty is in her blood.

Whether you want a future donor cow or a competitive show heifer, ROSEBUD is the perfect addition to your herd!

RIGHT TO FLUSH

BAR-E-L ERICA 74A

LOT 9A

GRAND RIVER ANGUS

Guaranteeing 10 Embryos to a maximum of 20 on one IVF cycle to the sire of your choice.

If reverse sorting or sexed semen is used, the guarantee on the amount of embryos is void.

What more can be said other than 74A is probably the most prolific Angus cow ever born in this country. The heritage she carries within Agribition only makes this offering that much more special. Her famed daughter Erica 11J won this exact show last year, then commanded a \$300,000 evaluation just 10 days later at Rainbow Angus. That feat is one of the many from just within the last year, let alone the accomplishments over the last, say, 5 years. Her progeny are just the type you can count on. The value of 74A both north and south of the line is remarkable. Her maternal look always shines through regardless of the sire she is bred to. Even more impressive is the herd sires she has placed into some of the most prominent cattle herds. In this exact sale one year ago her son Alpine topped the event at \$118,000. Then 3 months later, a son was a popular choice going for \$55,000 to Blairs .Ag — a bull named Legend who's semen this fall will be highly anticipated. In short, 74A just makes it happen — having a daughter in your herd gets massive recognition and having a son gets people to drive into your yard. We offer 10 IVF embryos as a minimum with a max of 20 with 74A averaging over 15 embryos a flush this past year. Please don't hesitate to contact any of the sale staff or ourselves as we are privileged to be involved with CWA and the All Star Sale.

PROGENY THAT CONSISTANTLY DELIVER



HAROLDSON'S AH ALPINE 271L
\$118,000 ERICA SON, HERDSIRE AT ELK RIDGE



HAROLDSON'S AH LEGEND ET 36L
\$55,000 ERICA SON, HERDSIRE AT BLAIRS.AG



HLC CSI ERICA 200L
SELLS AT LOT 9B, ERICA DAUGHTER



BLAIRSWEST ERICA 11J
CWA CHAMPION ANGUS FEMALE
\$150,000 1/2 INTEREST HIGH SELLER

ONE OF THE MOST PROLIFIC ANGUS FEMALES IN THE NORTH AMERICAN ANGUS COW HERD

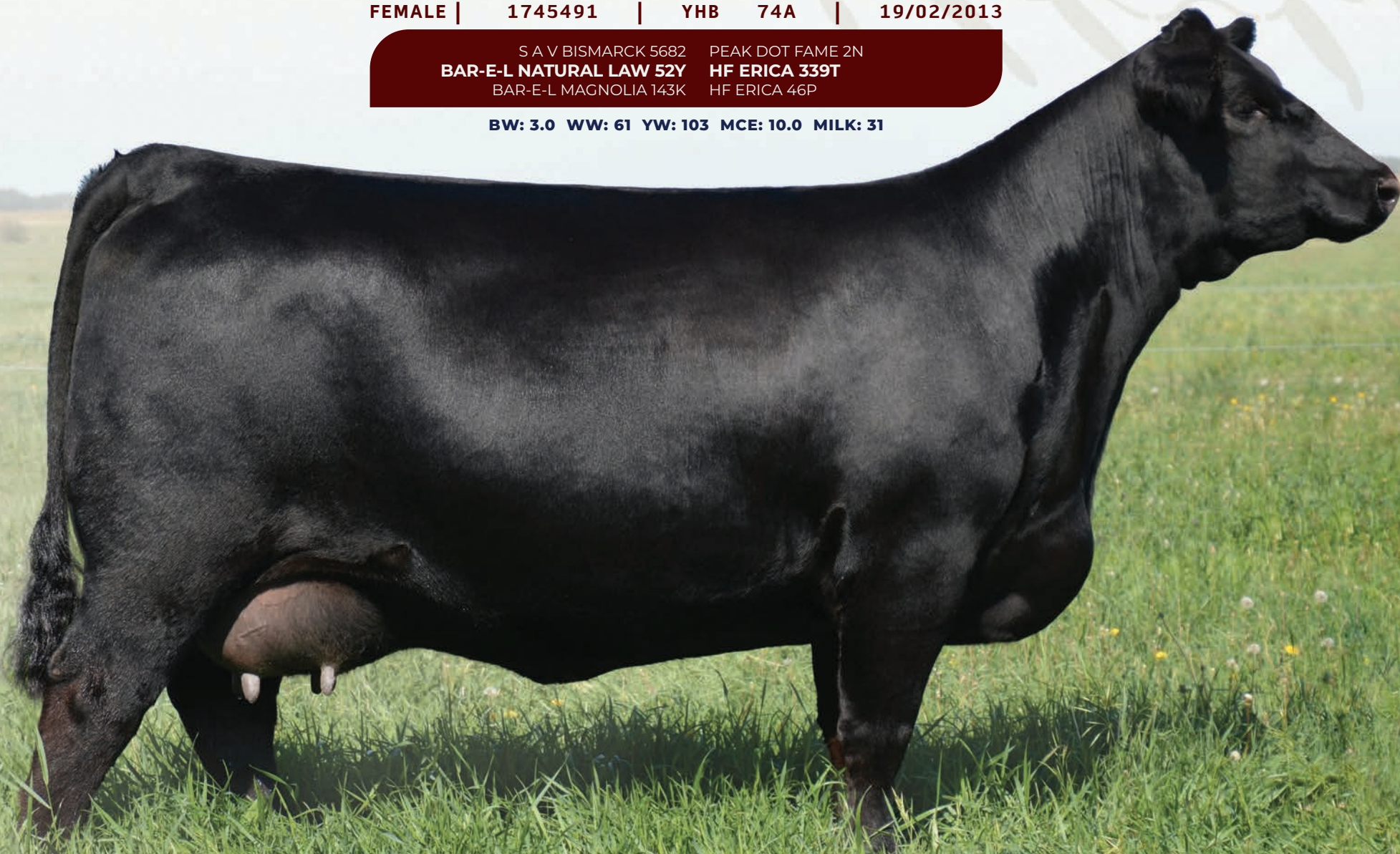
BAR-E-L

ERICA 74A

FEMALE | 1745491 | YHB 74A | 19/02/2013

S A V BISMARCK 5682 PEAK DOT FAME 2N
BAR-E-L NATURAL LAW 52Y HF ERICA 339T
BAR-E-L MAGNOLIA 143K HF ERICA 46P

BW: 3.0 WW: 61 YW: 103 MCE: 10.0 MILK: 31



HLC CSI

ERICA

200L

FEMALE | 2333879 | CHD 200L | 22/01/2023

MC CUMBER TREMENDOUS 2008	BAR-E-L NATURAL LAW 52Y
MC CUMBER TRIBUTE 702	BAR-E-L ERICA 74A
LASSIE 113 OF MC CUMBER	HF ERICA 339T

BW: 0.9 WW: 58 YW: 104 MCE: 6.5 MILK: 28

LOT 9B

HOLLINGER & CSI ANGUS

An exciting genetic opportunity combining some of the most elite, prolific females in the entire Angus breed. 200L is a direct daughter of Erica 74A and sired by Mccumber Tribute, a bull whose semen has commanded as high as \$700 per straw at auction. She carries service to one of our newest herd bulls that combines exceptional calving ease and explosive growth. He is a son of none other than Brooking Beauty 333 and sired by Musgrave Cracker Jack. His first calf crop, as well as females carrying service to him, will highlight our female and bull sale respectively. 200L has perfect teat placement and we anticipate her udder to be absolutely outstanding. 74A has written her own page in the history books and will go down as one of the most influential Angus females in the North American Angus cow herd. Here is your chance to own a direct daughter of the one and only 74A!

AI bred Apr. 26 to SAV Early Arrival 0903. Then exposed to Brooking Cracker Jack 2051 from May 8 - August 7. Due end of February To Cracker Jack (Bull Calf).



EMBRYOS
ERICA
RISE N SHINE

EMBRYOS | PACK OF 3 | STORED AT BOW VALLEY GENETICS

S A V RENOVATION 6822 S A V NATIONAL ANTHEM 5740
SAV RISE N SHINE 2709 **HLC ERICA 561G**
S A V EMBLYNETTE 2369 BAR-E-L ERICA 74A

PE BW: 3.3 WW: 60 YW: 109 MCE: 6.0 MILK: 30

LOT 9C

HOLLINGER & CSI ANGUS

You can spend countless hours, wear out tires, and cross many provincial, state, and country lines on a quest to secure genetics from the best females in the business, or you can tie into the Erica name. Cow family significance, unrivaled phenotypic quality and genuine generating power go hand in hand with the maternal lineage represented here - Bar E-L Erica 74A- SAV Madame Pride 0075 - SAV Blackcap May 4136 - SAV Emblynette 2369.

HLC Erica 561G has not let off the gas since the day she sold, and I would encourage you to stop by the farm in Neudorf or the stall at Agribition to see for yourself how she has excelled in production. Mated to Lot 1 in the famed and acclaimed Schaff Angus Sale, S A V Rise N Shine is an anomaly when it comes to blending phenotype with shape, muscle, and power. These embryos were produced at Trans Ova in Onida, where all reports say that Steve Yackley made her a feature stop on his legendary herd tours.

Qualified for Canada and USA



HLC ERICA 561G

SAV RISE N SHINE 2709

ELK RIDGE

EXCALIBUR^{4M}

FEMALE | 2389613 | ELK 4M | 04/01/2024

DEER VALLEY GROWTH FUND
WHITESTONE
B&B ERICA 605

HF ESPIONAGE 24D
PEDERSEN EXCALIBUR 31H
PEDERSEN DARK DUCHESS 332D

PE BW: 1.3 WW: 68 YW: 122 MCE: 12.0 MILK: 28

LOT 10

ELK RIDGE

- A powerful daughter of Whitestone, showcasing a big outline with all the extras
- Her dam, a high-selling female from the Pederson program, hails from what is widely considered their best cow family.
- Intriguing EPD portfolio from the top of our '24 calf crop, she won her class in a tough heat at Ag Ex in Brandon



MALCHUK

BLACKBIRD 11M

FEMALE | 2391974 | MFA 11M | 04/02/2024

MEAD MAGNITUDE S A V MAGNUM 1335 S A V EMBLYNETTE 9023
MUSGRAVE BIG SKY MUSGRAVE BLACKBIRD 2556 M A BLACKBIRD 1006-203

PE BW: 0.8 WW: 78 YW: 133 MCE: 14.5 MILK: 34

LOT 11

MALCHUK FARMS

- A powerful big bodied, beautiful constructed daughter of S A V Magnum 1335 who excels in cow power and phenotype backed by two of the elite cow families in the business
- Blackbird 11M is the perfect combination of elegance, style and predictability being royally bred for the long haul.
- She is from the heart of our 2024 embryo calves and is our Allstar that we will be showcasing in Regina



Miss
BLACKCAP MAY 4009

SCHWAN

FEMALE | 2390341 | TYS 9M | 02/01/2024

S A V RESOURCE 1441 CONLEY SOUTH POINT 8362
S A V TERRITORY 7225 SCHWAN MISS BLACKCAP MAY 1025J
S A V EMBLYNETTE 3293 S A V BLACKCAP MAY 4610

BW: 3.4 WW: 74 YW: 123 MCE: 3.0 MILK: 23

LOT 12

SCHWAN ANGUS

Schwan Miss Blackcap May 4009 is a definite standout with her length of body, depth, performance and style. Her Grandam S A V Blackcap May 4610 is a flush mate sister to S A V Cutting Edge and what an impact she is having in our herd; all of the females are super nice fronted, excellent hair, great udder structure combined with an attractive look. When you combine this with S A V Territory and his incredible Density dam the future of 4009 is exciting. Her maternal sister commanded a lot of attention and sold through this exact sale in 2022 to Dusty Rose Cattle Company for \$22,000. This is a female that has a lot of potential!



GRANDAM S A V BLACKCAP MAY 4610



SIRE S A V TERRITORY 7225



RAVENWORTH

RUBY 7M

FEMALE | 2362769 | RAVE 7M | 03/01/2024

BASIN PAYWEIGHT 1682 SITZ STELLAR 726D
DEER VALLEY GROWTH FUND RAVENWORTH RUBY 205K
DEER VALLEY RITA 36113 RAVENWORTH RUBY 6B

BW: -0.9 WW: 70 YW: 126 MCE: 12.0 MILK: 24

LOT 13

RAVENWORTH

Ruby 7M is a brood cow in the making, easy fleshing and packed with maternal greatness. The combination of Growth Fund on a Steller daughter is a really outstanding mating. The dam of this heifer is a flush sib from our flush cow Ravenworth Ruby 6B, with a group of full sibs in the herd we retained that are excellent uddered, big bodied productive females. These full sib females gained a lot of attention in our pasture and on the Angus tour. Ruby 7M is a deep bodied big ribbed female, who is wide topped with beautiful muscle shape. Her EPD's are phenomenal with TOP 6% CE, TOP 5% BW, TOP 10% WW, TOP 7% YW. The right look, the right numbers and the right pedigree.



JT

COUNTRESS

93M

FEMALE | 2365377 | JTD 93M | 03/02/2024

COLEMAN BRAVO 6313	BROOKING MERCURY 9057
KT BRAVO 1032H	DUSTY'S COUNTRESS 2101
S A V BLACKCAP MAY 5440	BROOKING COUNTRESS 7077

BW: 0.3 WW: 53 YW: 102 MCE: 9.0 MILK: 29

LOT 14

JT LIVESTOCK & PINCH HILL CATTLE CO.

- Generations of maternal power
- A stylish, big bodied and expressively-muscled daughter of KT Bravo 1032H descending from the foundation Countress 7077.
- Powerful and densely-made with an attractive, feminine look.
- JT Countess 93M has so much predictability bred in, when you start analyzing her pedigree and see how many breed leading cow families show up from the top to the bottom of her pedigree. Also these cow families are top donors from several different programs, combining highly sought after traits and combined into this extremely complete female.



SIRE KT BRAVO 1032H



93M SHOWN ALONGSIDE DAM

EMBRYOS

COUNTLESS EMERALD

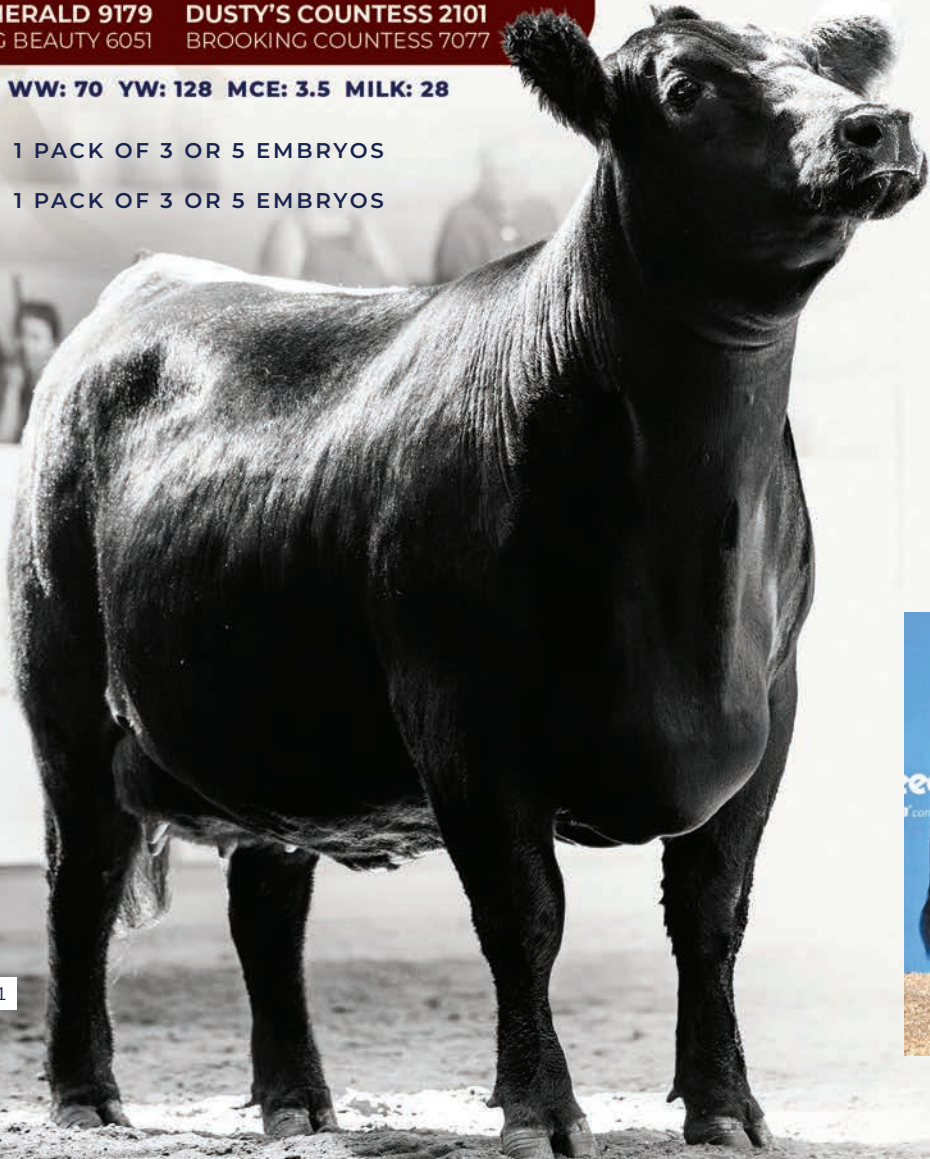
EMBRYO LOT | STORED AT BOW VALLEY GENETICS

S A V RENOVATION 6822 BROOKING MERCURY 9057
 BROOKING EMERALD 9179 DUSTY'S COUNTLESS 2101
 BROOKING BEAUTY 6051 BROOKING COUNTLESS 7077

PE BW: 4.4 WW: 70 YW: 128 MCE: 3.5 MILK: 28

14A 1 PACK OF 3 OR 5 EMBRYOS

14B 1 PACK OF 3 OR 5 EMBRYOS



DUSTY'S COUNTLESS 2101

LOT 14A&B

JT LIVESTOCK & PINCH HILL CATTLE CO.

With Brooking Emerald semen not on the open market here is one of the elite opportunities to acquire his influence. Emerald daughters have won every division they have been entered in at Agribition with his first two calf crops. This past fall KT Ranches top two selling lots at \$105,000 each were Emeralds out the same Countess cow family. This mating should definitely have predictability and quality second to none.

Qualified for North America and Australia



BROOKING EMERALD 9179



DUSTY'S COUNTLESS 2101

SHR

TIBBIE 10M

FEMALE | 2387217 | SHRX 10M | 20/03/2024

ELLINGSON ROUGHRIDER 4202 BAR-E-L NATURAL LAW 52Y
PEAK DOT TRUST 86G **MVF TIBBIE 10F**
PEAK DOT QUEEN 303D MVF TIBBIE 75X

BW: 1.4 WW: 57 YW: 109 MCE: 12.0 MILK: 22



LOT 15

SWAN HILLS

Here is a special chance to acquire not only a great show heifer but a tremendous breeding piece from a powerful genetic package that will take your program to the next level. The TIBBIE bloodline has stood the test of time and it's easy to see why here. Her sire is the \$65,000 Peak Dot Trust 86G who was the lead-off bull from the 2020 Peak Dot Spring Sale. MVF TIBBIE 10F has proven herself in our herd, raising a maternal sib last year who resembles her sister in terms of her extra substance and natural dimension while still offering that right kind of maternal look, we're excited about what she can do come production. 10M is a moderate heifer who is deep and maternal about the curvature to her rib cage, but more importantly, she steps down square with stability from behind on a stout bone and foot while remaining refined at the topside of her neck, laying smooth to the base of her shoulder. We expect 10M to show well, but I truly think her cow potential is where she will truly shine.

J SQUARE S

STAR MAIDEN 457M

FEMALE | 2391020 | SIES 457M | 23/02/2024

S A V RENOVATION 6822	HF ALCATRAZ 60F
S A V JESSE JAMES 0968	J SQUARE S STAR MAIDEN 107J
S A V BLACKCAP MAY 8961	SOO LINE STAR MAIDEN 1067

BW: 1.8 WW: 55 YW: 95 MCE: 4.5 MILK: 29

LOT 16

J SQUARE S

Star Maiden 457M is an outstanding young heifer calf from the heart of our program. She was an easy find all spring and summer as one of the favourites. Her overall balance, feminine attributes and exceptional performance are admired upon appraisal. Her sire, SAV Jesse James, is a bull who is new to our program and has complimented our cowherd very well. We are very excited to get Star Maiden's paternal sisters in production. Her dam looks to have a very promising future, as the Alcatraz females are really proving themselves and 457M's grandam was one of our most consistent cows on the farm. We are very confident that this mid February born female will make a great cow as well as a competitive junior project.



DAM J SQUARE S STAR MAIDEN 107J

ASM CATTLE ELLEDAM

LISA 406M

FEMALE | 2370779 | ADJ 406M | 02/02/2024

HOOVER NO DOUBT HALL'S FRANK 683F
BOYD/MYERS MINDSET M750 ELLDEM 683 LISA 37H
THOMAS BUTTERFLY 4742 NORTHERN VIEW ZARA LISA 133F

PE BW: 2.3 WW: 59 YW: 100 MCE: 9.5 MILK: 24



LOT 17

ELLEDAM

Initially this one was never intended to be offered up for sale, but with our partner Alex Manson now aged out of the 4-H program it was decided to charge forward and let this sweetheart of a heifer go. Partnership cattle can be a very fun and rewarding journey, this female is a perfect example of just that. She was a fan favourite of our display at the Sask North Central Angus tour held this past summer where she was standing along side her high producing, high phenotype ideal sized dam that stems back to the well regarded Northern View Angus program. This heifer would be one of the first females available in Canada sired by Boyd/Myers Mindset, a bull that is only just getting started and gaining traction fast. Her quiet temperament partnered with a pretty head and enchanting look makes her a sure fire junior project yet Her fresh genetics add endless value for anyone looking to enhance their herd. This one will make a cow.

Owned by Alex Manson & Elldem Cattle Investments

JUSTAMERE SF

FOREVER LADY 103M

FEMALE | 2384001 | AFA 103M | 05/01/2024

CONLEY EXPRESS 7211 SITZ BARRICADE 632F
EXAR EXPRESS WAY 1079B JUSTAMERE FOREVER LADY 550K
EXAR FRONTIER GAL 3734 EXAR FOREVER LADY 6470

BW: 65lbs Aug 18 Wt: 740lbs | BW: 4.2 WW: 71 YW: 116 MCE: 4.0 MILK: 20

LOT 18

JUSTAMERE

We are excited to be offering another stand out female as consignment to the ALL STARS sale in Regina. This Heifer calf owned with Lee Sholagan has been a stand out calf from day one. Big bodied sound footed cow power female. Who is out of a first time calver Sitz Barricade daughter that has a bright future. Sired by the famous EXAR Epressway that has sired many champions.

Be sure to come check her out at Stockade, Farm Fair, and CWA.



RAMROD

HOPE 320L

FEMALE | 2309070 | DTML 320L | 18/01/2023

BUSHES GRAND DESIGN	RAMROD CARHARTT 649D
RAMROD GRAN TORINO 022H	RAMROD HOPE 8139F
RAMROD MISSY 307A	RAMROD HOPE 503C

BW: 2.2 WW: 55 YW: 78 MCE: 4.0 MILK: 31

SERVICE SIRE



COLEMAN WORLD WIDE 2562

PATERNAL BROTHER TO 022H



RAMROD RIP 110J

MATERNAL GRAND DAM



RAMROD HOPE 503C
PICTURED AT 9 YEARS OLD



LOT 19

RAMROD

Hope 320L has attracted lots of attention over the summer. Hope is super sound with a great foot and leg shape. She is massive topped, big butted and deep sided; all while maintaining an elegant front end. 320L is backed by two of our most influential cow families here. Her paternal Granddam is also the mother to our Ramrod Rip 110J bull who was admired by many of the finest seedstock producers. On the maternal side Hope's Granddam is our 503C cow whom is a never miss cow around here. 320L's service sire to Coleman World Wide 2562 on March 25 is sure to be one of the first services to sell north of the border and one we feel will be the most exciting new progeny to come this January.

We are selling half interest

***Bred to Coleman World Wide 2562 on March 25/24
She is preg checked safe to AI date.***

EMBRYOS
LADY
HI-COUNTRY

EMBRYOS | PACK OF 3 | STORED AT BOVIGEN IN MOOSE JAW

ELLINGSON HI-RANGE
HF HI-COUNTRY 7L
 HF TIBBIE 21J

PEAK DOT FOOTHILLS 1012B
PEAK DOT LADY 51E
 PEAK DOT LADY 76B

PE BW: 0.4 WW: 79 YW: 134 MCE: 9.5 MILK: 30

LOT 20A

PEAK DOT



HF HI-COUNTRY 7L

Peak Dot Lady 51E is a model Angus female with a little extra look, loads of body depth and excellent production and fertility. She is one of two direct daughter of the Genex sire Peak Dot Foothills 1012B that we decided to flush this year.

Peak Dot Lady 51E is an Elite/Premier Dam with the CAA and has an average weaning ratio of 109 on her last five calves. She is also the dam of the \$30,000 Peak Dot Four Leaf 157L purchased by Six Mile Ranch. She has a bull calf by Profound that will be a feature in the 2025 Peak Dot Spring Bull Sale. Her mating to Hi-Country will result in daughters with impeccable udder quality, sons that are big crested, big backed, stout made with excellent scrotal size. This mating also puts all the right numbers in the right places.



EMBRYOS
PRIDE
HI-COUNTRY

EMBRYOS | PACK OF 3 | STORED AT BOVIGEN IN MOOSE JAW

ELLINGSON HI-RANGE
HF HI-COUNTRY 7L
 HF TIBBIE 21J

HOOVER NO DOUBT
PEAK DOT PRIDE 13F
 PEAK DOT PRIDE 7D

PE BW: 0.9 WW: 80 YW: 142 MCE: 13.0 MILK: 27

LOT 20B

PEAK DOT



HF HI-COUNTRY 7L

A top ranking donor female from Peak Dot Ranch that recently sold for \$25,000 to Chapman Angus Oklahoma in the Autumn Angus Classic. Peak Dot Pride 13F is genetically and prototypically outstanding female with undeniable maternal presence, pedigree power and cow family strength all wrapped up in one package. She has been a very consistent fertile donor producing 18 embryos on her last two flushes. She is a herd favorite with her impeccable udder quality and model Angus body type. A third generation donor going back to the popular Peak Dot Pride 88B. An Elite/Premier Dam with a nursing ratio of 108 on her last seven calves and noted mother of Peak Dot Herdsires Peak Dot Lancaster and Peak Dot Seedstock 38F. Peak Dot Pride 13F progeny and embryos have commanded top prices in 2023 and the sky is the limit going forward. The mating to the popular Hi-Country will result in progeny that are loaded with added muscle shape, body depth and tremendous foot quality.



AJA

JESTRESS 496M

FEMALE | 2394751 | AJA 496M | 09/02/2024

LD CAPITALIST 316	S A V NET WORTH 4200
B & J CAVALIER	DEERE ROSE JESTRESS 20D
B & J ENCHANTRESS 6681	JESTRESS OF DEERE ROSE RTH 15Z

PE BW: 1.1 WW: 57 YW: 101 MCE: 4.5 MILK: 27

LOT 21

AJ ANGUS

AJA 496 is one of the progeny from our flush cow RTH 20D which was on display at the 2024 SK Angus Tour. 496 along with her flush mates were the talk of the tour being the most consistent mating of females from a sexed flush. Her sire Cavalier is known for producing heifers with style softness and structural design which attracts anyone's attention!! A unique and different pedigree that can be mated any way.



DEERE ROSE JESTRESS 20D

COTTONWOOD

TIBBIE 48M

FEMALE | ?386686 | RTBG 48M | 28/02/2024

S A V QUARTERBACK 7933 BROOKING MERCURY 9057
S A V PANTHER 1906 KT TIBBIE 2410
S A V BLACKCAP MAY 6644 PM TIBBIE 216'15

PE BW: 1.8 WW: 72 YW: 124 MCE: 6.0 MILK: 27

LOT 22

COTTONWOOD

Cottonwood Tibbie 48M is an ideal female with extra length body and depth of rib, very smooth and attractive through her front end. She is awesome haired and is going to lay down a beautiful udder.

This heifer has a stack breeding with PM Tibbie 216C out of Bar E-L Natural Law. The sire Brooking Mercury that is Firebrand and the Brooking Beauty 333. Then you mix this with SAV Panther. Panther goes back to the amazing SAV Blackcap May. You can expect a big time performing, highly maternal animal in these matings.



Miss

MADSEN'S

MARION 10M

FEMALE | 2390139 | TMF 10M | 13/02/2024

U2 TEMPTATION 180E	MICH WHEATLAND LEADING EDGE
LKR GAME CHANGER 33K	HLC MISS MARION 489G
FREYBURN LADY 52F	HLC 101 JEWEL 654C

BW: 86 lbs. | BW: 4.6 WW: 59 YW: 101 MCE: -0.5 MILK: 23

LOT 23

MADSEN

Here's your chance to acquire the first and only LKR Game Changer offspring to sell this year. We purchased this well balanced calving ease bull from Lucas and Kayla mainly for his perfect foot and quiet disposition, and were pleasantly surprised this fall to see the style and performance of his babies.

Her dam 489G came to us from our good friends the Hollingers as high selling bred heifer from the 2020 edition of the Female Focus, a never miss cow.

10M herself was an easy pick for Mr. Poley this summer, very long spined, clean fronted, gorgeous head and of course she will have a show cow udder. She is going to her new owner in the right condition, I refuse to wreck this breeding female with too much show feed.



JK

RED WOOD COULEE

TAURUS 805K

SEMEN LOT | 2285009 | RC 805K | 08/02/2022

RED LCA MERLE 717E RED 5L NORSEMAN KING 2291
RED LCA MAMA TRIED 935 RED WOOD COULEE KURUBA 805F
RED SOO LINE ANNIE 0135 RED RC KURUBA 206Z

BW: 4.3 WW: 45 YW: 76 MCE: -2.0 MILK: 28

24A 1 PACK OF 5 STRAWS

24B 1 PACK OF 5 STRAWS

24C 1 PACK OF 10 STRAWS

24D 1 PACK OF 10 STRAWS

LOT 24A-D

TRIPLE L ANGUS, J BAR DEE FARMS, WOOD COULEE CATTLE CO

Taurus is a three dimensional powerhouse packed with muscle, masculinity, and rib shape, combined with impeccable structure and flawless feet. The list of boxes he checks off is quite lengthy. Long spined, expressively muscled, and very athletic with ideal structural soundness, Taurus is attractive from every angle. His dark red colour, presence, and the list goes on.

He was crowned Grand Champion Red Angus Bull at Stockade Roundup in Lloydminster this year.

He is going to be one of those sires that will be around for a long time. Limented semen will be available in Canada.

Canada/USA qualified. Stored at Bovigen in Moose Jaw.



MATERNAL SISTER

Miss

RED JLL

DEAL 417M

FEMALE | 2355359 | JLL 417M | 18/01/2024

RED JRA ESCALADE 76A	RED WHEEL LANDSLIDE 90F
RED FLYING K ESCALADE 116J	RED JLL MISS DEAL 14H
RED FLYING K CHARITY 218C	RED JLL MISS DEAL 89C

BW: 0.3 WW: 39 YW: 66 MCE: 5.0 MILK: 24

LOT 25



JLL LIVESTOCK - DONATION LOT

The Miss Deal cow family is notorious here for their fertility, milk quality & the ability to bring in a calf that tips the scale in the fall. It is our largest cow family for a reason, they work. This heifer will pack some punch, in a moderate package. She is soft made, correct and easy to handle. She is a great candidate for a junior project and she will turn around and be an exceptional cornerstone female to put back into the herd.

Donated by JLL Livestock - Jarret, Jenna, Ava & Cade Loveridge, Melville, SK



JL

AJ ANGUS LOT 21
ADRIAN & KIM JUNGMAN
Box 338, Duck Lake, SK S0K 1J0
P: 306-221-6864
E: ajanguscattle@gmail.com

ARDA FARMS & FREEWAY ANGUS LOT 3
JAY DAVIS (ARDA)
JARRETT & KATHLEEN DAVIS (FREEWAY)
Box 184, Acme, AB, T0M 0A0
Arda: 403-888-2524
Freeway: 403-888-2386
E: ardafreeway@gmail.com

BAR-H LAND & CATTLE CO. LOT 6
ROBIN, MICHELLE & JOHN HOGBERG
Box 927, Langenburg, SK S0A 2A0
Robin: 306-743-7490
John: 306-496-7696
E: rthogberg@sasktel.net

BLAIRSWEST/MJT LOT 4
SCOTT & CALLA BLAIR
Scott: 306-365-7649
Calla: 306-365-7799
E: calla7799@gmail.com

COTTONWOOD ANGUS FARMS LOT 22
BRETT GAUBE
Box 1587, Weyburn, SK, S4H 0T1
P: 306-537-4710
E: gaubeb@outlook.com

ELK RIDGE STOCK FARMS LOT 10
WADE BARTKIW
Box 57, Rosburn, MB R0J 1V0
C: 204-859-0279
E: wade@elkridgefarms.ca

ELLDAM CATTLE INVESTMENTS LOT 17
BARRETT & SHELBY ELLIOT
Box 3861, Humboldt, SK S0K 2A0
Barrett: 306-260-8717
Shelby: 306-281-3729
E: elldemcattleinvestments@gmail.com

GRAND RIVER ANGUS FARM LLC LOT 9A
WAYNE BLEYENBERG
1292 Wilson Ave SW
Grand Rapids, MI, USA, 49534
P: 616-889-2744
E: tristatecalf@comcast.net

GRYLLS CATTLE COMPANY LOT 8
NAT GRYLLS
Box 299, Neudorf, SK, S0A 2T0
P: 403-741-6910
E: nat.grylls@gmail.com

HAMILTON FARMS LOT 5
ROB & GAIL/JOEL HAMILTON
274132 Range Rd 33
Rockyview County, AB T4C 2Y2
Rob: 403.540.3186
Gail: 403.540.8291
Joel: 403.808.6341
E: angus@hamiltonfarms.ca
HOLLINGER LAND & CATTLE LOT 7, 9B&C
CHAD & BREANNE, TREVOR & MEL
Box 276, Neudorf, SK S0A 2T0
Chad: 306.331.0302
E: hollingerlandandcattle@gmail.com

JJL LIVESTOCK LOT 2, 25
JARRET, JENNA, AVA & CADE LOVERIDGE
Box 1333, Melville SK, S0A 2P0
Jarret: 306-730-7072
Jenna: 306-730-8478
E: jjlangus@live.com

J SQUARE S LOT 16
JORDAN SIES
Box 506, Melville SK, S0A 2P0
C: 306-728-1299
E: sieser94@hotmail.com

JT LIVESTOCK LTD LOT 14, 14A&B
JOHN & TAMMY
Box 788, Stettler AB, T0C 2L0
John: 403-741-5629
E: jt.live@live.ca

JUSTAMERE FARMS LTD. LOT 18
JON & SHELLY FOX
Box 320, Lloydminster, SK S9V 0Y2
Jon: 780.808.6860
Jon V: 306.821.4182
E: justamere@sasktel.net

MADSEN ANGUS LOT 23
TOM & ALANNA MADSEN
Box 223, Arden MB, R0J 0B0
P: 204-368-2335
P: 204-841-1757
E: madsenangus@gmail.com
E: alannamadsen18@gmail.com

MALCHUK FARMS LOT 11
JOHN & DALLAS MALCHUK
Box 268, Shoal Lake, MB R0J 1Z0
P: 204-859-0014
E: dallasmalchuk@gmail.com

MILLER WILSON ANGUS LOT 1
LEE & DAWN WILSON & FAMILY
Box 550, Bashaw, Alberta, T0B 0H0
Lee: (780) 608 - 0257
Dawn: (780) 781 - 9733
E: dmm.mwangs@gmail.com

PEAK DOT RANCH LTD LOT 20A&B
MONEO FAMILY
Box 105, Wood Mountain, SK S0H 4L0
Carson: 306-266-4414
Clay: 306-266-4411
E: peakdot@gmail.com

PINCH HILL CATTLE CO. LOT 14, 14A&B
Chad Homer and Family
Stittsville, ON
P: 519-349-9659
E: pinchhill@gmail.com

RAMROD LIVESTOCK LOT 19
RYAN & LACEY BROWN
Box 67, Medora MB, R0M 1K0
P: 204-747-5991
P: 431-740-4451
E: lou_136_47@hotmail.com

RAVENWORTH CATTLE LOT 13
GARRY & DONNA BERTING
Box 134, Middle Lake, SK S0K 2X0
Garry: 306-231-7567
Donna: 306-231-5175
E: garry@ravenworth.com

SCHWAN ANGUS RANCH LOT 12
JEFF, BRENDA SCHWAN
TY & PAYTON
Box 552, Swift Current, SK S9H 3W4
Ty: 306-774-4494
Brenda: 306-741-2166
jschwan69@yahoo.ca

SWAN HILLS RANCH LOT 15
SCOTT & CINDY TIBBLE
Box 2471, Swan River MB, R0L 1Z0
P: 204-539-2570
P: 204-734-0210
E: stibblemail@gmail.com

TRIPLE L ANGUS LOT 24A-D
RANDY & KIM/CONNER TETZLAFF
Box 157, Viscount, SK, S0K 4M0
P: 306-944-2734
P: 306-231-6969
E: tetz@sasktel.net

TERMS & CONDITIONS

TERMS:

The terms of the sale are cash or cheque, payable at par at the sale location. The right of property shall not pass until after settlement has been made; no invoicing on buyers in attendance unless previous arrangements have been made. Every animal sells to the highest bidder and in cases of disputes, the auctioneer's decision will be final. Announcements from the auction block will take precedence over the printed matter in the catalogue. Current exchange rates will be announced sale day. All monies are in Canadian funds.

CERTIFICATE OF REGISTRATION:

Each animal will carry papers issued by the Canadian Angus Association unless otherwise stated. A certificate of registry duly transferred will be furnished to the buyer for each animal after payment has been made.

PEDIGREE ESTIMATES:

Pedigree Estimates (PE) are created on the projected mating of the animal's sire and dam based on averages of the two, creating estimated values that do not hold the same accuracy of actual EPDs issued from the association and should be used as such.

HEALTH:

All animals in the sale have met all necessary health requirements.

GUARANTEE:

Each animal becomes the purchaser's risk immediately after the animal is sold. All animals in this sale will be sold under the terms and guarantees set forth by the Canadian Angus Association with regard to health, freedom from defects and from both reproductive and specific genetic unsoundness.

PREGNANCY INFORMATION:

All serviceable age females have been pregnancy examined by an accredited veterinarian, giving an estimated length of gestation. This estimated gestation period shall be used only as a guideline to calving and is not a guarantee of actual service.

LIABILITIES:

All persons attend the sale at their own risk. The seller, facility owner and sale manager assume no liability legal or otherwise, for any accidents that occur. It is understood that T Bar C Cattle Co. (2013) Ltd. is acting only as a medium between buyer and seller and is not responsible for any failure on the part of either party to live up to his obligations. Neither does T Bar C Cattle Co. (2013) Ltd. assume any financial obligations to collect or enforce collection of any monies between parties and any legal action that may in exceptional cases be taken must be between the buyer and the seller. T Bar C Cattle Co. (2013) Ltd. assumes no responsibility for any credit extended by the seller to the buyer. The buyer must look to the seller for fulfillment of all guarantees and representations made hereunder.

DELIVERY:

Every assistance will be given in getting your purchases home. Each animal becomes the risk of the purchaser as soon as sold.

PHONE, MAIL, WIRE BIDS:

Bidders unable to attend the sale may phone, wire or mail their bids and instructions to the sale manager, auctioneer or special representatives. Bids must be received in sufficient time prior to the sale.

INSURANCE:

We strongly recommend that insurance is purchased for full value.

ERRORS:

All announcements at sale time, written or oral, supersede any written material in the catalogue.

**Return Undeliverable
Canadian Addresses To:
T Bar C Cattle Co. Ltd.
Box 2330, Warman, SK S0K 4S0
Canada**



**RETURN POSTAGE GUARANTEED
PORT DE RETOUR GARANTI**

ALL STAR

ANGUS SALE