

LONE PINE *and* AIRRIESS ACRES

WITH GUESTS

JHF HEREFORDS
ROCK-N-ROLL POLLED HEREFORDS
& TWIN VIEW POLLED HEREFORDS

INVITATIONAL **EVENT**

SATURDAY, OCT. 19, 2024 || CHOPPER K AUCTION MART || ALAMEDA, SK || 6:00 PM



SALE DAY information

SATURDAY, OCT. 19, 2024 || CHOPPER K AUCTION MART || ALAMEDA, SK || 6:00 PM

SALE STAFF

AUCTIONEER *T Bar C Cattle Co. Ltd.*

Chris Poley 306-220-5006

RINGSIDE *T Bar C Cattle Co. Ltd.*

Shane Michelson 403-363-9973

Ben Wright 519-374-3335

Levi Rimke 204-851-4515

SALE DAY PHONES

Rob O'Connor 306-550-4890

Trevor Airriess 306-338-7753

Janelle Gulka 204-365-0931

Or any of the Sale Staff

INSURANCE

Alameda Agencies

Bonnie Thompson 306-489-2258

SALE MANAGEMENT

T Bar C Cattle Co. Ltd

Box 2330, Warman, SK S0K 4S0 306-933-4200

info@tbarc.com

View the catalogue online at WWW.BUYAGRO.COM

ACCOMODATIONS

Ramada by Wyndham Carlyle 306-993-1841

110 Turriff Ave E, Carlyle, SK S0C 0R0

Western Star Inns & Suites 306-453-2700

211 Railway Ave W, Carlyle, SK S0C 0R0

Days Inn by Wyndham Estevan 306-634-6456

1305 9 St, Estevan, SK S4A 1J1

Bear Claw Casino & Hotel 306-577-4577

White Bear First Nation, SK-9, Carlyle, SK S0C 0R0

TRUCKING

H.S. Knill Co. Ltd. 877-442-3106

ONLINE BIDDING

WWW.DLMS.CA

Mark Shologan 780-699-5082

BE PART OF THE SASKATCHEWAN SWEEPSTAKES!

Saturday, October 19 - 6 PM

Lone Pine & Airriess Acres Invitational Event

Saturday, October 19 - 1 PM

ANL/Glenlees Polled Herefords & Guests

Sunday, October 20 - 1 PM

Blair-Athol Haroldson's & Friends

FROM THE DESK AT

T Bar C

Welcome to the Lone Pine and Airriess Acres Invitational Polled Hereford Event commencing at 6:00 P.M. at the Chopper K Auction Mart, Alameda, Saskatchewan. As you can see, both the date and location has changed in order to assist and accommodate Hereford enthusiasts and visitors the convenience of participating in three events in two days of the "Saskatchewan Sweepstakes", the famous Polled Hereford weekend which has been the source of industry leading seedstock.

Your hosts, Rob and Dawn along with Trevor and Sara offer a "cut above the rest" lineup of breeding females to enhance your breeding program. Keeping with tradition, they have invited Twin View Polled Herefords, JHF Herefords and Rock-N-Roll Polled Herefords as guest consignors to add genetic diversity to the offering.

The offering is packed full of genetic opportunities that will enhance all types of breeding programs. You will find a great lineup of bred females with early services and herd building numbers as the livestock industry struggles to rebuild depleted cow herds throughout North America. The 2024 models are exciting and have already proven to be competitive this past summer. What a shopping opportunity to take advantage of this soaring cattle market and add herd building seed stock into your individual programs.

Mark October 19th on your calendar and plan to be with us for an exciting weekend of fun and fellowship in the "White Face" breed. Feel free to contact any of the T Bar C team if you require assistance in your selection or purchases in the offering... as always, we will be pleased to assist in a confidential and professional manner.

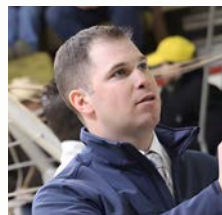
Chris Poley



CHRIS 306-220-5006



SHANE 403-363-9973



BEN 519-374-3335



LEVI 204-851-4515



T BAR C CATTLE CO. LTD.

OFFICE: 306-933-4200 info@tbarc.com
www.tbarc.com

Welcome FROM YOUR HOSTS

Dear Hereford Friends and Fellow Cattlemen,

The Lone Pine Crew would like to welcome you to our new sale location and date. I'd also like to thank our sale partners, the Airriess Family, The good folks at Twin View, JHF Herefords and Rock'n'Roll Polled Herefords. And of course the partners who consign cattle with us who'll you will see listed with each lot.

For Lone Pine last 18 months have been phenomenal. Professionally I have had the honour of becoming the Show Director of Canada's Outdoor Farm Show. Included Ag in Motion I now lead the 2 largest Agricultural Trade Shows in Canada.

Jessica entered High school, and Lexie has graduated with honours.

At the Farm level the girls have begun to exhibit at more shows. And they have competed very well. Qualifying for and winning several championships against our Hereford colleagues as well as competitors representing other British and continental breeds.

The highlights of course are this year's Bonanza where Jessica won her class with MiraBelle and Lexie won Champion 2yr old and Reserve Grand Champion female with Jazzy. We have also been very excited to see cattle do well for their new owners. Every time we see the XLP brand in someone's show string it fills us with pride.

We look forward to seeing you at the sale.

Sincerely,
Rob & Dawn O'Connor



Lonepine SHOW TEAM





LOT
1

LOT 1 KIRBY-LONEPINE 91H **KRYSTAL** 28M {DBP}

C03116620 Jan 25 2024 LPK 28M Polled

NJW 79Z Z311 ENDURE 173D ET
RSK 173D COMMAND ET 91H
NEXT GEN RIESLING 295 ET

MOHICAN THM EXCEDE Z426
KIRBY-LONEPINE KRYSTAL 28G
SVPH 7101 KRYSTAL 28Z

KCF BENNETT ENCORE Z311 ET
BW 91H 100W RITA 79Z ET
H/TSR/CHEZ/FULL THROTTLE ET
STAR SPIRIDGE KESSEY 321L ET
TH 133U 719T UPGRADE 69X
NJW M326 UNFORGETTABLE 76W ET
UPS JT NEON 7101 1ET
SVPH 407P KRYSTAL 842T

EPDS BW 3.1 WW 62.1 YW 105.9 MM 22.7 TM 53.8

Birthweight: 80lbs.

The Krystal Cow family was one of the top lines for the DeCorby family. At their dispersal sale we dug in and bought Krystal 28Z. That investment worked! She became the matron of this new family in our herd. In fact, her grandson Merlin 28K (who is the son of Authority that we chose to keep) has become our dominate sire to use on heifers. Because we are using him with success, we are able to offer Krystal 28M to start off our sale this year. She is attractive and well balanced. A front pasture female like so many of the Command heifers.

Consigned with Kirby Polled Herefords



Command **SIRE**

ATTRACTIVE
and **WELL**
BALANCED
A FRONT PASTURE FEMALE



LOT
2

LOT 2 KIRBY-LONEPINE **HI SOCIETY 44M**

C03116622 Feb 07 2024 LPK 44M Polled

NJW 11B 6589 AUTHORITY 57G ET	/S MANDATE 66589 ET
KIRBY-LONEPINE MERLIN 28K	NJW 79Z 10W RITA 11B
KIRBY-LONEPINE KRYSTAL 28C	MOHICAN THM EXCEDE Z426
	SVPH 7101 KRYSTAL 28Z
	XLP 75Z KELSEY 55B
KIRBY-LONEPINE PRINCE ET 10E	KIRBY-LONEPINE SYBIL 403A
KIRBY-LONEPINE HI SOCIETY 44H	M-R 27A 403A POWERPLAY 4C
M-R 4C SHIRAZ 44E	M-R 75Z HIGH SOCIETY 44C

Birthweight: 67lbs.
 We are starting the sale with Merlin's sister and his daughters to show everyone how well he is producing and the maternal strength his genetics offer. In just his first calf crop he is proving to consistently produce low birthweight calves with vigor that develop into strong animals. I think High Society 44M is a great example of what he is producing. On top of that this female is from the same family that produced the Agribition Reserve Junior Bull calf Champion for Torch View Cattle Co. One last note...look at her udder development!!! It's amazing.

Consigned with Kirby Polled Herefords

EPDS BW -0.5 WW 50.3 YW 82.4 MM 25 TM 50.2



Authority **GRANDSIRE**



Kirby-Lonepine 137G Shiraz 44J **MATERNAL SISTER**



LOT
3

LOT **3** XLP 28K **DAYDREAM** 73M

C03116623 Feb 21 2024 XLP 73M Polled

NJW 11B 6589 AUTHORITY 57G ET
KIRBY-LONEPINE MERLIN 28K
KIRBY-LONEPINE KRYSTAL 28G

RVP 8Y GLOBE TROTTER ET 137G
XLP 137G DAYDREAM 73K
XLP DAYDREAM ET 73G

/S MANDATE 66589 ET
NJW 79Z 10W RITA 11B
MOHICAN THM EXCEDE Z426
SVPH 7101 KRYSTAL 28Z
NJW 73S W18 HOMEGROWN 8Y ET
NJW 73S R117 DREAMIN 149X
CRR ABOUT TIME 743
NJW 73S R117 DREAMIN 149X

Birthweight: 70lbs.
NJW Daydream 73S has proven to be one of the most dominate breeding females in the last 2 decades. Her proof of production is why I decided to invest heavily in her genetics. I also believe that line breeding can be a useful tool when used correctly. 73M's two-year-old dam's pedigree has NJW 73S in it three times! By adding Merlin 28K and his sire Authority's genetics to this stacked pedigree the new owner will get the advantage of this genetic combination! I predict we will hear from this female many more times.

EPDS BW 2.2 WW 57.2 YW 95.9 MM 30.4 TM 59



Daydream 73S **GREAT-GRANDDAM**

CARRYING THE
DAYDREAM 73S
Legacy
STACKED PEDIGREE
MERLIN 28K X DAYDREAM 73S
GREAT ADVANTAGES TO THIS
ELITE GENETIC COMBINATION



LOT
4

LOT **4** XLP 1G **NICOLE** T12M

C03116621 Jan 29 2024 XLP 112M Polled

INNISFAIL WHR X651/723 4013 ET
PCL 4013 GLITZ 1G
PCL 49Y DAHLILA 111E

KJ 2403 RECRUIT 966R
XLP 966R NICHOLE ET 132G
MARJON 2Z NICHOLE ET 117N

EFBEEF TFL U208 TESTED X651 ET
INNISFAIL P230 T723
PCL YUKON R117 ET 49Y
HAROLDSON'S DAHLILA T100 97X
ALLENDALE ROBIN HOOD
MARK DOMETTE MR 2403
HAROLDSON'S RAIDER P183 ET 2Z
GOLD-BAR COUNTRY GIRL T19G

Birthweight: 72lbs.
This is a female I would rather keep but I feel I need to offer a Glitz daughter. Glitz has been one of the most popular bulls I have ever invested in, and I want to offer his genetics. The Nicole cow family evolved from the storied Country Girl family that produced champions at both the Toronto Royal and Agribition for Gold Bar Livestock. Recently this calf's maternal brother won Champion yearling bull at Manitoba Ag-Ex.

EPDS BW 4.5 WW 59.6 YW 100.9 MM 24.9 TM 54.7

RS PCL 4013 **GLITZ** 1G

C03059037 Feb 20 2019 DAWM 1G Polled

EFBEEF TFL U208 TESTED X651 ET
INNISFAIL WHR X651/723 4013 ET
INNISFAIL P230 T723

PCL YUKON R117 ET 49Y
PCL 49Y DAHLILA 111E
HAROLDSON'S DAHLILA T100 97X

EFBEEF FOREMOST U208
EFBEEF P606 MABEL R415
EF F745 FRANK P230
INNISFAIL 235 R501 ET
SHF RIB EYE M326 R117
C&T 122L STARLET 9N
SHF TAHOE R117 T100
TLELL 58G SUPER NOVA 4S

EPDS BW 6.5 WW 80.2 YW 134.9 MM 25.8 TM 65.9

Glitz was the bull I picked to buy out of the Phantom Creek Dispersal...then on sale day he was scratched! Luckily my friend Raymond Johnson also really liked the bull and called the Mann's and asked if the bull was available. When he was negotiating to purchase Glitz he was kind enough to ask me to be involved. Of course I did, and what a great investment it has been. This bull has been one of the most popular that I have ever had the pleasure of partnering on. We only had a handful of calves sired by Glitz this year so we can only offer one for sale. But those people who are using him are having success. This year the SE Sask Pen Show Reserve Senior heifer calf champion was a Glitz daughter for Blair Athol.





Birthweight: 80lbs.
 Wow this calf has substance! In fact, that's a trait her sire Budweiser 176J has consistently been passing to his progeny. You will notice this calf is named GIA. That's because her great grandam is the GIA cow that was a past Bonanza Reserve Champion female for Chantelle Wichenheiser. I think this March calf should go to Bonanza in Alberta next summer.
Consigned with Chula-Vista Polled Herefords.



Gia **GREAT GRANDDAM**

LOT 5 XLP CJVK 176J **GIA** 9M
C03116624 Mar 17 2024 XLP 9M Polled
 H RW ALL IN 7165 ET
KIRBY-LONEPINE BUDWEISER 176J
 KIRBY-LONEPINE 6Z LEXUS 765B
 CHULA-VISTA TOP NOTCH 401Y
FLYER-CATTLE BABE 9D
 XLP CLF 15N GIA 815T

JDH JJD 9Y 485T ALL IN 96B ET
 EXR TERRI 489
 MAPLE-DALE UNLEASHED ET 6Z
 SQUARE-D LEXUS 765P
 MOUNT-VERN 50S WAYFARER 3W
 CHULA-VISTA WINSOM GIRL 1W
 DUNROBIN HOLLYWOOD 15L
 DUSTY-DEE 8146 GIA 15N

EPDS BW 4.8 WW 52.7 YW 90.9 MM 19.6 TM 46

LOT 6 XLP JRP **MANDY** 117M
W654524 Mar 03 2024 XLP 117M Polled
 JRP WINSTON 252C PHOENIX 36F
JRP 36F TAURIS 12J
 HMS HI-CLIFFE 112D GEMINI 12G
 ANL A XLP ACTION ET 75Z
XLP 75Z MANDY 117H
 GHC LRL MISS SYBIL 117D

HARVIE 40Y WINSTON 252C
 KIRBY-LONEPINE UNIQUE 36C
 WLW 27A LOGIC 112D
 WCC 180A SPIRIT QUEEN 7512E
 TH 89T 743 UNTAPPED 425X ET
 ANL PBC 3N SPLENDOUR 143T
 GHC MACH 1 25A
 HAROLDSON'S PHILIS T100 51W

EPDS BW 5.9 WW 64 YW 102.3 MM 29.8 TM 61.8



Birthweight: 75lbs.
 The Mandy cow family originated in the Crittenden herd so you know it's a good one. Several high sellers have in recent sales have come from this family. In fact, our Bull sale \$17,000 high seller is this heifers maternal brother. Her sire is from the Unique family that produced Agribition Supreme Champion bull BEYOND.
Consigned with JRP Herefords



XLP JRP Red Rock 1K
MATERNAL BROTHER



LOT 7 KIRBY-LONEPINE 157H **SYBIL** 403M

W654525 Feb 06 2024 LPK 403M Polled

KJ BJ 309C LEADER 182F	R LEADER 6964
KJ TWJ 907E LIBERTY 159H ET	KJ BJ 236X TIMEWISE 309C ET
KJ BJ 339A CHARDONNAY 907E ET	BR NITRO AVENTUS 3116 ET
	BBH 743 ADORA 339A
	GHC PREMIER 152M
XLP KPH LCPH TRIBUTE ET 707B	CIRCLE-D 832W WILMA 19F
KIRBY-LONEPINE SYBIL 403E	STAR OBF BOGART 5L
KIRBY-LONEPINE 5L SYBIL 403T	KIRBY-LONEPINE 76J SYBIL 403L

EPDS BW 2.9 WW 54.5 YW 89.4 MM 30.6 TM 57.9

Birthweight: 89lbs.
 This descendant of the Sybil family is sired by Jensens' most recent Denver Champion LIBERTY. You'll appreciate her femininity, excellent skeletal structure and perfect topline. You'll be more and more proud of her through development.
Consigned with Kirby Polled Herefords



Liberty **SIRE**

LOT 7A KIRBY-LONEPINE **SYBIL** 403E

C03039942 Apr 01 2017 LPK 403E Polled

GHC PREMIER 152M	WTK 75A CONTINENTAL 66F
XLP KPH LCPH TRIBUTE ET 707B	GL 127U KAREN 25Y
CIRCLE-D 832W WILMA 19F	CIRCLE-D WRANGLER 832W
	TWIN J MISS STK 167R
	CS BOOMER 29F
STAR OBF BOGART 5L	NJW 1Y LARIAT 41E
KIRBY-LONEPINE 5L SYBIL 403T	DOUBLE-U JACKPOT 76J
KIRBY-LONEPINE 76J SYBIL 403L	WTK 21F SYBIL 109J

EPDS BW 3.9 WW 48.5 YW 77.7 MM 20.4 TM 44.7

It's a goal of mine to always offer a nice pair in the sale for those who prefer to buy proven cows. Keep an eye out here. 403E produces keepers. A daughter placed third at Agribition last year.
Bred to Kirby-LonePine Budweiser 176J on April 27, 2024
Exposed to Kirby-LonePine Budweiser 176J from May 27- July 28, 2024
Consigned with Kirby Polled Herefords



Budweiser **SERVICE SIRE**



Birthweight: 83lbs.
 The Lexus cow family has been in our herd for 19 years. It's easy to keep females in the herd when they keep checking all the boxes. Look at how this heifer's udder is developing. I predict this female will keep the family line going strong. Her sire is a very attractive bull that produces excellent daughters.
Bred AI to RSK Command ET 91H on May 6, 2024
Exposed to XLP 137G Journey 500L from May 27 - Aug 24, 2024
Consigned with Kirby Polled Herefords

LOT 8 KIRBY-LONEPINE 41F **LEXUS** 765L {HYP}

C03108895 Mar 16 2023 LPK 765L Polled

CHURCHILL KICKSTART 501C ET
XLP THUNDER 41F
 PCL TORI 118U 41A

ANL A XLP ACTION ET 75Z
KIRBY-LONEPINE LEXUS 765D
 SQUARE-D LEXUS 765P

CHURCHILL RED BULL 200Z
 HVH OKSANA 4L 33N
 MHPH 101S UMPIRE 118U
 GLENROSE 3N TORI 116T

TH 89T 743 UNTAPPED 425X ET
 ANL PBG 3N SPLENDOUR 143T
 SQUARE-D STINGER 779K
 SQUARE-D JAYNE 565K

LOT 9 XLP 537G **REESE** 501L

C03106490 Feb 22 2023 XLP 501L Polled

TH FRONTIER 174E
TH BIG COUNTRY 537G ET
 TH 506X 145Y DOMINETTE 533B ET

XLP 38Z POLLED SCRIPT 355B
XLP 355B REESE 501J
 XLP 101S REESE 500Y

TH 403A 475Z PIONEER 358C ET
 FTF TRUSTING LADY 312A
 FTF PROSPECTOR 145Y
 TH 122 71I DOMINETTE 506X ET

XLP 91S DOC HOLIDAY 38Z
 XLP 187 JULIET 355Y
 BNMHPH 13P HEAT 101S
 HAROLDSON'S JVJ REESE 19D 5S

EPDS BW 4.6 WW 63.2 YW 97.9 MM 24.5 TM 56.1

EPDS BW 2.5 WW 61.3 YW 92.5 MM 33.9 TM 64.6



Every year I feel obligated to sell a member of the REESE cow family. Everyone who buys one has great success, and this one has an amazing data set. Her birth weight epds, her performance epds, and her milk and total maternal epds are all top end.
Exposed to Kirby-LonePine Merlin 28K from May 5 - Aug 24, 2024
Observed bred to Merlin 28K on May 27, 2024



Big Country SIRE

RSRSK 173D **COMMAND** ET 91H**C03073323 Feb 17 2020 RSK 91H Polled**KCF BENNETT ENCORE Z311 ET
NJW 79Z Z311 ENDURE 173D ET
BW 91H 100W RITA 79Z ETSCHU-LAR ON TARGET 22S
KCF MISS REVOLUTION X338 ET
NJW 73S M326 TRUST 100W ET
REMITALL RITA 91HH/TSR/CHEZ/FULL THROTTLE ET
NEXT GEN RIESLING 295 ET
STAR SPIRIDGE KESSEY 321L ETH WCC/WB 668 WYARNO 9500 ET
R SWEET RED WINE 039
STAR SS THUNDER LT 62J
SSF KEYSHA 949**EPDS BW 3.8 WW 72.8 YW 116 MM 25.1 TM 61.5**

When I first saw Command's dam as a yearling I was intrigued by her femininity, overall structure and eye appeal. When I saw her first set of ET calves I liked the consistency and value she produced. That's when I decided to use a son. I chose Command because of the maternal strength of his sire. The global acceptance of that pedigree made it a no brainer. We have safely used this bull on heifers.

**RS**XLP 137C **JOURNEY** 500L**C03106480 Jan 21 2023 XLP 500L Polled**NJW 73S W18 HOMEGROWN 8Y ET
RVP 8Y GLOBE TROTTER ET 137C
NJW 73S R117 DREAMIN 149XSHF WONDER M326 W18 ET
NJW P606 72N DAYDREAM 73S
SHF RIB EYE M326 R117
NJW P606 72N DAYDREAM 73SXLP THUNDER 41F
XLP 41F REESE 500H
XLP 75Z REESE 500FCHURCHILL KICKSTART 501C ET
PCL TORI 118U 41A
ANL A XLP ACTION ET 75Z
XLP 101S REESE 500Y**EPDS BW 7.2 WW 64.3 YW 107.1 MM 33.1 TM 65.3**

As a seedstock breeder my goal is to develop a bull that has excellent feet and legs, is long bodied, is masculine with large & perfectly shaped testicles, has excellent depth of body and heavily muscled, dark colour, and perfectly pigmented. I love his stats too. Birth weight was 92 lbs, yearling weight over 1200lbs. His epd's boast being in the top 1% of the breed for lean carcass, top 5% for rib eye size, and top 10% for post weaning gain, and top 15% for performance and maternal traits. And clean of all genetic defects. 500L is the closest I've gotten to that bull. I'm extremely excited for this bulls future. I'm excited for the Journey!

**RS**KIRBY-LONEPINE **MERLIN** 28K**C03095809 Jan 26 2022 LPK 28K Polled**/S MANDATE 66589 ET
NJW 11B 6589 AUTHORITY 57G ET
NJW 79Z 10W RITA 11BR LEADER 6964
/S LADY DOMINO 0158X
LJR 023R WHITMORE 10W
BW 91H 100W RITA 79Z ET
TH 133U 719T UPGRADE 69X
NJW M326 UNFORGETTABLE 76W ET
UPS JT NEON 7101 1ET
SVPH 407P KRYSTAL 842TMOHICAN THM EXCEDE Z426
KIRBY-LONEPINE KRYSTAL 28G
SVPH 7101 KRYSTAL 28Z**EPDS BW -1.2 WW 55.3 YW 94.9 MM 25.4 TM 53.1**

The first time I saw Authority I was very impressed. So much so that when River Valley Polled Herefords offered semen at their production sale I purchased the largest package. The result was our next herd bull Merlin 28K. Merlin himself was a low birth weight calf with great vigor, and he produces the same. That predictability is why I have chosen to use him on a large portion of heifers. You'll see his progeny and sister as they lead the sale as lots 1-3.





LOT
10

LOT **10** XLP 91H **RITA** 58L

C03106484 Feb 01 2023 XLP 58L Polled

NJW 79Z Z311 ENDURE 173D ET	KCF BENNETT ENCORE Z311 ET
RSK 173D COMMAND ET 91H	BW 91H 100W RITA 79Z ET
NEXT GEN RIESLING 295 ET	H/TSR/CHEZ/FULL THROTTLE ET
	STAR SPIRIDGE KESSEY 321L ET
NJW 78P TWENTYTWELVE 190Z ET	NJW 73S M326 TRUST 100W ET
XLP RITA 38T ET 58E	NJW BW LADYSPORT DEW 78P ET
BAR-H RITA 38T	REMITALL RESISTOR 252R
	BAR-H 94I GENNIE 24L

EPDS BW 4.5 WW 62.6 YW 103.6 MM 21.1 TM 52.4

Birthweight: 82lbs.
 Rita 58L is a beautiful female. She is one of the most impressive, feminine yearling we are offering. She was shown by Lexie this year as her 4-H female because she is a wonderful example of what our breed is striving for. Great pigmentation, dark red, gorgeous front end, excellent bone, and the best temperament you could ask for. When you walk by her remember to give her a scratch...she'll want one! The Rita cow family started from a cow I purchased from Robin Hogberg, Bar-H Rita 38T. We flushed this cow to great success. Therefore, her genetics run strong within our herd.
Exposed to XLP 137G Journey 500L from May 27 - Aug 24, 2024
Observed bred to Journey 500L on June 6, 2024



Command **SIRE**



Twenty Twelve **GRANDSIRE**

Birthweight: 72lbs.

Lexus 165L is a smooth made, eye appealing member of the Lexus family. Her dam's pedigree combines both ACTION 75Z and HEAT 101S. Two of my favourite bulls.

Exposed to Kirby-LonePine Merlin 28K from May 5- August 24, 2024

Observed bred to Merlin 28K on May 14, 2024

Consigned with Kirby Polled Herefords



LOT 11 KIRBY-LONEPINE 91H **LEXUS** 165L

C03108905 Feb 20 2023 LPK 165L Polled

NJW 79Z Z311 ENDURE 173D ET
RSK 173D COMMAND ET 91H
NEXT GEN RIESLING 295 ET

KCF BENNETT ENCORE Z311 ET
BW 91H 100W RITA 79Z ET
H/TSR/CHEZ/FULL THROTTLE ET
STAR SPIRIDGE KESSEY 321L ET

BNMHPH 13P HEAT 101S
KIRBY-LONEPINE LEXUS 765J
KIRBY-LONEPINE LEXUS 765D

REMITALL PATRIOT ET 13P
ANL PBG 29F BONNIE 21P
ANL A XLP ACTION ET 75Z
SQUARE-D LEXUS 765P

EPDS BW 4 WW 64.7 YW 100.9 MM 23.8 TM 56.2

LOT 12 XLP RM **BLANCHE** 419L {DBP}

C03106493 Mar 01 2023 XLP 419L Polled

NJW 79Z Z311 ENDURE 173D ET
RSK 173D COMMAND ET 91H
NEXT GEN RIESLING 295 ET

KCF BENNETT ENCORE Z311 ET
BW 91H 100W RITA 79Z ET
H/TSR/CHEZ/FULL THROTTLE ET
STAR SPIRIDGE KESSEY 321L ET

H RW ALL IN 7165 ET
XLP RM BLANCHE 119J
XLP 145X BLANCHE 119C

JDH JJD 9Y 485T ALL IN 96B ET
EXR TERRI 489
XLP 134S DIESEL 145X
LLCH 8E BLANCHE ET 119P

EPDS BW 6.3 WW 67.1 YW 109.8 MM 23 TM 56.6

Birthweight: 85lbs.

A member of the Blanche family, the oldest family in our herd. She exhibits depth and capacity. She's got the real cow look. Her granddam, dam and sister remain in the herd.

Exposed to Kirby-LonePine Merlin 28K from May 5 - Aug 24, 2024

Observed Bred to Merlin 28K on May 5, 2024





Birthweight: 92lbs.
 Again a feminine and attractive Command daughter. Her dam was the result of embryos we purchased from a very good cow family, produced by the Charlton's one of my favourite families in the Hereford fraternity. A maternal sister was purchased by Blair-Athol.

Observed Bred to Kirby-LonePine Merlin 28K on May 22, 2024
Exposed to Kirby-LonePine Merlin 28K from May 5 Aug 24, 2024
Consigned with Kirby Polled Herefords

LOT 13 KIRBY-LONEPINE 91H **CONNIE** 620L

C03108893 Feb 12 2023 LPK 620L Polled
 NJW 79Z Z311 ENDURE 173D ET
RSK 173D COMMAND ET 91H
 NEXT GEN RIESLING 295 ET
 PW VICTOR BOOMER P606
KIRBY-LONEPINE CONNIE ET 620A
 SHORTY-CROFT CONNIE 20M
 KCF BENNETT ENCORE Z311 ET
 BW 91H 100W RITA 79Z ET
 H/TSR/CHEZ/FULL THROTTLE ET
 STAR SPIRIDGE KESSEY 321L ET
 REMITALL BOOMER 46B
 PW VICTORIA 964 8114
 REMITALL GOVERNOR 236G
 BLAIR-ATHOL 49H CONNIE 37K

EPDS BW 6.3 WW 62.6 YW 101.6 MM 26 TM 57.3

LOT 14 KIRBY-LONEPINE 91H **SYBIL** 403L {HYP}

C03108899 Feb 14 2023 LPK 403L Polled
 NJW 79Z Z311 ENDURE 173D ET
RSK 173D COMMAND ET 91H
 NEXT GEN RIESLING 295 ET
 XLP KPH LCPH TRIBUTE ET 707B
KIRBY-LONEPINE SYBIL 403E
 KIRBY-LONEPINE 5L SYBIL 403T
 KCF BENNETT ENCORE Z311 ET
 BW 91H 100W RITA 79Z ET
 H/TSR/CHEZ/FULL THROTTLE ET
 STAR SPIRIDGE KESSEY 321L ET
 GHC PREMIER 152M
 CIRCLE-D 832W WILMA 19F
 STAR OBF BOGART 5L
 KIRBY-LONEPINE 76J SYBIL 403L

EPDS BW 4.1 WW 61.5 YW 98.3 MM 22.7 TM 53.5



Birthweight: 86lbs.
 The stoutest made of all our Command yearlings. Easy fleshing. Deep sided. This is what the cow calf side of the beef industry is designed for.

Exposed to Kirby-LonePine Merlin 28K from May 5 - Aug 24, 2024
Observed bred to Merlin 28K on May 19, 2024
Consigned with Kirby Polled Herefords

Globe Trotter has done a wonderful job for us as a senior herdsire. He adds shape and capacity. The birthweights are heifer worthy. He has excellent feet and legs. He is masculine with a great scotum and testicle size. His dam is donor cow Dreamin 149X. His grandam is the Hereford powerhouse NJW Daydream 73S who appears in his pedigree twice.



73S GRANDDAM



RS RVP BY **GLOBE TROTTER** ET 137G

C03061264 Feb 28 2019 RVP 137G Polled

SHF WONDER M326 W18 ET	KCF BENNETT 3008 M326
NJW 73S W18 HOMEGROWN 8Y ET	SHF GOVERNESS 236G L37
NJW P606 72N DAYDREAM 73S	PW VICTOR BOOMER P606
	NJW 94J DEW 72N
SHF RIB EYE M326 R117	KCF BENNETT 3008 M326
NJW 73S R117 DREAMIN 149X	HVH MISS HUDSON 83K 8M
NJW P606 72N DAYDREAM 73S	PW VICTOR BOOMER P606
	NJW 94J DEW 72N

EPDS BW 3 WW 51.5 YW 87 MM 38.1 TM 63.9

LOT 15 KIRBY-LONEPINE **KRYSTAL** 28L {DBP}

C03108901 Feb 26 2023 LPK 28L Polled

NJW 73S W18 HOMEGROWN 8Y ET	SHF WONDER M326 W18 ET
RVP BY GLOBE TROTTER ET 137G	NJW P606 72N DAYDREAM 73S
NJW 73S R117 DREAMIN 149X	SHF RIB EYE M326 R117
	NJW P606 72N DAYDREAM 73S
MOHICAN THM EXCEDE Z426	TH 133U 719T UPGRADE 69X
KIRBY-LONEPINE KRYSTAL 28G	NJW M326 UNFORGETTABLE 76W ET
SVPH 7101 KRYSTAL 28Z	UPS JT NEON 7101 1ET
	SVPH 407P KRYSTAL 842T

EPDS BW 2.4 WW 50.7 YW 90.1 MM 29.3 TM 54.7

Birthweight: 80lbs.
Here's another easy fleshing female. Her dam has a perfect udder. Her brother is the bull we've chosen to use on our heifers. I have confidence in these genetics.

Bred AI to RSK Command ET 91H on May 16, 2024
Exposed to XLP 137G Journey 500L from June 7-Aug 24, 2024
Consigned with Kirby Polled Herefords



Homegrown GRANDSIRE





LOT 16 KIRBY-LONEPINE 137G **BAMBI** 108L

C03110394 Feb 14 2023 LPK 108L Polled

NJW 73S W18 HOMEGROWN 8Y ET
RVP 8Y GLOBE TROTTER ET 137G
 NJW 73S R117 DREAMIN 149X

SHF WONDER M326 W18 ET
 NJW P606 72N DAYDREAM 73S
 SHF RIB EYE M326 R117
 NJW P606 72N DAYDREAM 73S

TH 89T 743 UNTAPPED 425X ET
 ANL PBG 3N SPLENDOUR 143T
 KIRBY-LONE PINE SANTANA ET 91S
 XLP 2103 BAMBI 1008P

EPDS BW 0.9 WW 44.2 YW 74.7 MM 33.8 TM 55.9

Birthweight: 67lbs.
 I enjoy looking at an eye appealing, feminine cow herd. This is the type of female that falls into that category. She will be a great animal to build off of.

Bred AI to RSK Command ET 91H on May 4, 2024
Exposed to Kirby-LonePine Merlin 28K from May 26 - Aug 24, 2024
Consigned with Kirby Polled Herefords



LOT 17 XLP 137G **MONA** 151L

TWIN C03106487 Feb 11 2023 XLP 151L Polled

NJW 73S W18 HOMEGROWN 8Y ET
RVP 8Y GLOBE TROTTER ET 137G
 NJW 73S R117 DREAMIN 149X

SHF WONDER M326 W18 ET
 NJW P606 72N DAYDREAM 73S
 SHF RIB EYE M326 R117
 NJW P606 72N DAYDREAM 73S

TH 89T 743 UNTAPPED 425X ET
 ANL PBG 3N SPLENDOUR 143T
 REMITALL HEATER 161U
 BLAIR-ATHOL 103 MONA 30U

EPDS BW 3.9 WW 54.5 YW 91.7 MM 30.9 TM 58.2

Birthweight: 52lbs.
 Easy going female out of a nice cow who has in her first few years already produced a herd bull. Awesome milk epd's.

Bred AI to RVP 8Y Globe Trotter ET 137G on May 6, 2024
Exposed to Kirby-LonePine Merlin 28K from May 26 - Aug 24, 2024



LOT 18 XLP 137G **MONA** 161L

TWIN C03106488 Feb 11 2023 XLP 161L Polled

NJW 73S W18 HOMEGROWN 8Y ET
RVP 8Y GLOBE TROTTER ET 137G
 NJW 73S R117 DREAMIN 149X

SHF WONDER M326 W18 ET
 NJW P606 72N DAYDREAM 73S
 SHF RIB EYE M326 R117
 NJW P606 72N DAYDREAM 73S

TH 89T 743 UNTAPPED 425X ET
 ANL PBG 3N SPLENDOUR 143T
 REMITALL HEATER 161U
 BLAIR-ATHOL 103 MONA 30U

EPDS BW 3.9 WW 54.5 YW 91.7 MM 30.9 TM 58.2

Birthweight: 52lbs.
 I really like this female. She has mama cow written all over her. Her dam has raised 4 calves in 3 years. She milks well and rebreeds on time. Awesome milk epd's.

Bred AI to RSK Command ET 91H on May 16, 2024
Exposed to Kirby-LonePine Merlin 28K from June 7 - Aug 24, 2024

RS KIRBY-LONEPINE **BUDWEISER** 176J

C03086297 Feb 18 2021 LPK 176J Polled

JDH JJD 9Y 485T ALL IN 96B ET
H RW ALL IN 7165 ET
EXR TERRI 489

KJ HVH 33N REDEEM 485T ET
JDH MS 26U CRACKER JACK 9Y ET
MSU TCF REVOLUTION 4R
BR TERRI 9130 ET

MAPLE-DALE UNLEASHED ET 6Z
KIRBY-LONEPINE 6Z LEXUS 765B
SQUARE-D LEXUS 765P

TRIARA UNLEASHED 893U
CHURCHILL LADY 3117
SQUARE-D STINGER 779K
SQUARE-D JAYNE 565K

EPDS BW 5.1 WW 57.5 YW 98.7 MM 19 TM 47.8

I think to be a true seedstock producer you need to utilize the bulls you raise. We do use our own bulls, and it seems that each generation of our bulls produces better. Budweiser is proving that he was the right choice to use. His daughters are attractive, feminine and have capacity. His sons are masculine, thick and deep. He is a herd improver. He should be because he's a member of the Lexus family. In short I'm saying this BUDS for you!



LOT 19 XLP MOUNT VERN **FANCY** 418L

C03113751 Mar 29 2023 XLP 418L Polled

H RW ALL IN 7165 ET
KIRBY-LONEPINE BUDWEISER 176J
KIRBY-LONEPINE 6Z LEXUS 765B

JDH JJD 9Y 485T ALL IN 96B ET
EXR TERRI 489
MAPLE-DALE UNLEASHED ET 6Z
SQUARE-D LEXUS 765P

XLP KPH LCPH TRIBUTE ET 707B
XLP MOUNT-VERN FANCY 418H
XLP CLF 5L FANCY 118X

GHC PREMIER 152M
CIRCLE-D 832W WILMA 19F
STAR OBF BOGART 5L
XLP CLF 2103 FANCY 118T

EPDS BW 3.7 WW 51.1 YW 85.5 MM 18.7 TM 44.3

Birthweight: 84lbs.

The FANCY family has been producing quite a few bulls the past number of years so the females offered are limited. This complete smooth made heifer is unique by pedigree. You will find 4 amazing grandams in her pedigree, EXR TERRI 489, Square-D Lexus 765P, Circle-D Wilma 19F and XLP Fancy 118X. The maternal power is real.

Exposed to Kirby-LonePine Merlin 28K from May 5 - Aug 24, 2024
Observed bred to Merlin 28K on May 25, 2024
Consigned with Mount-Vern Polled Herefords



LOT 20 XLP 176J **TORI** 41L {DLP HYP}

C03113750 Mar 15 2023 XLP 41L Polled

H RW ALL IN 7165 ET
KIRBY-LONEPINE BUDWEISER 176J
KIRBY-LONEPINE 6Z LEXUS 765B

JDH JJD 9Y 485T ALL IN 96B ET
EXR TERRI 489
MAPLE-DALE UNLEASHED ET 6Z
SQUARE-D LEXUS 765P

ANL A XLP ACTION ET 75Z
XLP 75Z FOXY TORI 41E
PCL TORI 118U 41A

TH 89T 743 UNTAPPED 425X ET
ANL PBG 3N SPLENDOR 143T
MHPH 101S UMPIRE 118U
GLENROSE 3N TORI 116T

EPDS BW 5.6 WW 58.6 YW 98.9 MM 23.2 TM 52.5

Birthweight: 89lbs.

This female is a continuation of the Tori Family. This female line is best known for their femininity and growth. I think you'll agree this female carries these same characteristics.

Exposed to Kirby-LonePine Merlin 28K from May 26 - Aug 24, 2024



Airriess Acres

The heifer calves have been given Bovishield one shot and Tasvax. All of the animals have been given Safeguard and Cleanup. Any females that are showing any potential defect have been tested and will have results by sale day.



LOT **21** AIRRIESS-ACRES XLP **CAMILLE** 65M (DLF GYF IEF MSUDF)

C03112880 Jan 19 2024 TSA 65M Polled

JW B716 DEVOUT 18051
NJW PMH COMMITMENT 137J ET
 NJW 79Z 103C RITA 304F ET

BOYD 31Z BLUEPRINT 6153
PCL 6153 PHANTOMS MISS 39H
 PCL 425X PHANTOMS MISS 124D

KCF BENNETT DEVOUT B716 ET
 JW 936 DOMINETTE 1674 ET
 NJW 73S 38W RIDGE 103C ET
 BW 91H 100W RITA 79Z ET
 R LEADER 6964
 NJW 91H 100W RITA 31Z ET
 TH 89T 743 UNTAPPED 425X ET
 PCL PHANTOMS MISS 57T 25X

EPDS BW 6.8 WW 72.8 YW 120 MM 34.7 TM 71.1

Homo Polled Birthweight: 98lbs. First Commitment heifer calf we have for sale and man are we impressed with her! She is dark, strong topped and carries lots of depth. She has lots of style and shape to her. Her mom is a beautiful cow that seems to impress us more and more every year. Ranks top 5% in weaning and yearling weight, total maternal, FMI, REA, top 10% in milk, udder suspension, teat size.



PCL 39H Dam

Owned with Lone Pine Cattle Services



LOT
21

Birthweight: 92lbs.

Here is one of our top two year old females that we decided to put on offer. We really love this cow as she exhibits length depth and good foot under her. She is dark and has a big goggle on left eye. 19K udder is balanced and comes off a strong cow family that is a no miss every year. Her first calf along side of her is a good example of what she can produce. We are excited to have her mated to High Times and look forward to seeing the calf from her next year!

AI bred April 12 to Gerber High Times H65. Exposed to SHF Kerosene 589 K084 ET from May 15 - July 30, 2024. Preg checked July 30 and safe to AI date.



Homo Polled

Birthweight: 62lbs.

Here's a fancy heifer calf that will grab your attention when you see her. She is red necked and stylish. We are very happy with the Endorsement calves. She looks like she will follow her mama's footsteps into becoming a great cow. Ranks top 10% birth weight, top 15% calving ease.



LOT 22 AIRRIESS-ACRES LOLA 19K {DLF HYF IEF MSUDF}

C03093097 Jan 03 2022 TSA 19K Polled

DRF JWR PRINCE VICTOR 71I
TH 122 71I VICTOR 719T
KBCR 19D DOMINETTE 122

HRP THM VICTOR 109W 9329
RHF 964 VICTRA 4057
NJW 1Y WRANGLER 19D
KBCR DOMINETTE 9112

TH 89T 743 UNTAPPED 425X ET
PCL 425X LOLA 88D
PCL LOLA 55S 51U

CRR ABOUT TIME 743
TH 16G 20N GEMINI 89T
HF 59M STATESMAN ET 55S
PCL LOLA 657G 11L

EPDS BW 3.4 WW 60 YW 93.9 MM 20.2 TM 50.2

LOT 22A AIRRIESS-ACRES LIBERTY 30M {DLF HYF IEF MSUDF}

C03112865 Jan 10 2024 TSA 30M Polled

NJW 133A 6589 MANIFEST 87G ET
NJW 119E 87G ENDORSEMENT 216J
NJW 8B 164C LEXY 119E

/S MANDATE 66589 ET
BW NJW 76S 8Y HOMESPUN 133A
NJW 76S 88X CIRCLEBOSS 164C ET
NJW 149Z 10W LEXY 8B

TH 122 71I VICTOR 719T
AIRRIESS-ACRES LOLA 19K
PCL 425X LOLA 88D

DRF JWR PRINCE VICTOR 71I
KBCR 19D DOMINETTE 122
TH 89T 743 UNTAPPED 425X ET
PCL LOLA 55S 51U

EPDS BW -0.3 WW 55.9 YW 87 MM 25.8 TM 53.8



LOT
23

LOT 23 AIRRIESS-ACRES **MILEY** ET 27M (DLF HYF IEF MSUDF)

C03114231 Jan 09 2024 TSA 27M Polled

BOYD 31Z BLUEPRINT 6153
RST FINAL PRINT 0016
RST MS X651 TESTED 8032

R LEADER 6964
NJW 91H 100W RITA 31Z ET
EFBEEF TFL U208 TESTED X651 ET
RST MS 0124 TIMESAWASTIN 6094

GHC SCHWARZKOPF 125E
AIRRIESS-ACRES KANDY 68J
GHC MISS MAPLE ET 67D

SHF CANNON Z210 C95
GHC MISS GALAXY ET 208Z
ANL C HAR T100 TAHOE 86 ET 23B
MCCOY 49S KALLA 61W

EPDS BW 0.2 WW 71.4 YW 104.6 MM 35 TM 70.7

Homo Polled Birthweight: 78lbs.
Miley was a last minute decision to put in the sale. We had plans to keep her for the kids to show for 4-H as we showed her a bit this summer but we decided we wanted to bring our best heifer calves out and I think this Final Print heifer fits in perfectly with the other two heifer calves we have on offer. Miley 24M is dark and red necked. She is a thick made heifer with the style to carry it through. Miley has the mama cow look to her but yet carries the show ring look. Ranks top 1% in udder suspension, teat size, MPI, top 5% in weaning weight, total maternal, sustained cow fertility, top 10% calving ease, birth weight, milk, top 15% in yearling weight, REA, top 20% in FMI. The dam has done very well in her show life and I expect this heifer calf to follow her mama's footsteps. Kandy has become our young donor cow for us as the future looks bright for her.
Reserving the right to a flush at our expense.



Grand Champion Female at Tisdale 4-H TSA 68J



Final Print SIRE

18 AIRRIESS ACRES

RS SHF HORIZON D287 H022 ET (DLF HYF IEF MSUDF MDF DBF)

C03083637 Jan 29 2020 H022 Polled

SHF YORK 19H Y02
SHF DAYBREAK Y02 D287 ET
SHF MISS M326 T08 ET

MSU MF HUDSON 19H
LOEWEN MISS P20 10W
KCF BENNETT 3008 M326
SHF POSTIVE MISS 73C M15

GERBER ANODYNE 001A
SHF TIME 001A D81
SHF TIME 42X A140

KCF BENNETT 9126J R294
GERBER 627S HOLLY 096Y
K&B SENTINEL 0042X
KJ 796P TIMEWISE 006W ET

EPDS BW -1.7 WW 63.3 YW 99.2 MM 28.4 TM 60.1



LOT 24 AIRRIESS-ACRES TINKERBELL 18L {HYP}

C03103910 Jan 03 2023 TSA 18L Polled

SHF DAYBREAK Y02 D287 ET
SHF HORIZON D287 H022 ET
SHF TIME 001A D81

SHF YORK 19H Y02
SHF MISS M326 T08 ET
GERBER ANODYNE 001A
SHF TIME 42X A140

SHF CANNON Z210 C95
AIRRIESS-ACRES TINKERBELL 95G
GHC MISS DEW 103Z

GV CMR X151 MR 847 Z210
SHF MISTY 33T Y35
GHC VOLUME III ET 139S
CT MISS PREMIER 129U

EPDS BW 2.8 WW 62.8 YW 102.7 MM 25.1 TM 56.5

Birthweight: 86lbs.

18L is a nice made Horizon H022 heifer as she is smooth made and carries a nice style to her. We are really happy with the first set of H022 heifers that we calved out as they have nice level udders and good maternal to them. Ranks top 10% udder suspension and teat size, top 15% marbling, top 25% weaning and yearling weight.

Exposed to SHF Kerosene 589 K084 ET from April 23 - July 30, 2024. Observed bred May 11. Preg checked on July 30 confirms observed bred date.



LOT 25 AIRRIESS-ACRES SYBIL 40L {HYP}

C03104334 Jan 10 2023 TSA 40L Polled

WHITEHAWK WARRIOR 845C ET
CRITT PROSPECT ET 4H
HAROLDSONS JVJ SARAH 521X 14Z

UPH PROSPECTOR P152
GRANDVIEW CMR 4003 BETH Y115ET
TH 122 71I VICTOR 521X ET
HAROLDSON'S ANL SARAH T100 35W

GHC MACH 1 25A
GHC EL MISS SYBIL 161D
GHC EL MISS GOVERNESS 198B

BBSF 101N WRANGLER 29W
GHC MISS SUSIE 161T
SHF MANNING W18 Z22
GHC EL MISS DEW 175Z

EPDS BW 2.5 WW 60 YW 97.3 MM 29.1 TM 59.1

Birthweight: 88lbs.

40L is a dark red, deep bodied balanced made heifer. We are really happy with CRITT 4H calves as the females and bulls have been both productive for us. Ranks top 10% for udder suspension.

40L comes from a nice made moderate cow that produces well for us every year.

Exposed to SHF Kerosene 589 K084 ET from April 23 - July 30, 2024. Observed bred May 8. Preg checked on July 30 confirms observed bred date





LOT
26

LOT **26** AIRRIESS-ACRES **LYDIA** ET 39L (DLF HYF IEF MSUDF)

C03104549 Jan 10 2023 TSA 39L Polled

KCF BENNETT ENCORE Z311 ET
NJW 79Z Z311 ENDURE 173D ET
BW 91H 100W RITA 79Z ET

TH 122 71I VICTOR 521X ET
HAROLDSONS JVJ SARAH 521X 14Z
HAROLDSON'S ANL SARAH T100 35W

SCHU-LAR ON TARGET 22S
KCF MISS REVOLUTION X338 ET
NJW 73S M326 TRUST 100W ET
REMITALL RITA 91H

DRF JWR PRINCE VICTOR 71I
KBKR 19D DOMINETTE 122
SHF TAHOE R117 T100
HAROLDSON'S SARAH 122L 22R

EPDS BW 0.9 WW 69.6 YW 111.6 MM 35.7 TM 70.5

Homo Polled Birthweight: 90lbs.

Dark cherry red Endure daughter. Lots of length and depth to this heifer. Ranks top 1% in sustained cow fertility, MPI, FMI, top 5% in total maternal, top 10% in weaning weight, yearling weight, milk, maternal calving ease, scrotal, udder suspension, REA. Top 25% marbling.

Exposed to SHF Kerosene 589 K084 ET from May 15 - July 30, 2024. Observed bred June 28, 2024. Preg check confirms observed bred date.



RS SHF **KEROSENE** 589 K084 ET (DLF HYF IEF MSUDF)

C03107961 Feb 2 2022 K084 Polled

R LEADER 6964
/S MANDATE 66589 ET
/S LADY DOMINO 0158X

SHF DRUMLINE 001A D256
SHF KATE D256 G329 ET
INNISFAIL 723 U208 4010 ET

HYALITE ON TARGET 936
R MISS REVOLUTION 1009
SHF RIB EYE M326 R117
/S LADY DOMINO 652S

GERBER ANODYNE 001A
SHF MAGGIE LG Z161
EFBEEF TFL U208 TESTED X651 ET
INNISFAIL P230 T723

EPDS BW -3.6 WW 53.6 YW 81.6 MM 25.1 TM 51.9

Birthweight: 78lbs.

42L stems out of a strong cow family as the AKJA 25Z donor cow has done well for Howard Crittenden as well as for us.

She is a nice feminine made heifer that is cherry red. We are very happy with how this heifer turned out. Ranks top 20% marbling and top 25% weaning and yearling weight.

She is AI bred on April 26 to NJW 119E 87G Endorsement 216J. Exposed from May 17 - July 30, 2024 to SHF Kerosene 589 K084 ET. Preg check confirms safe to AI date



Endorsement AI SIRE



LOT 27 AIRRIESS-ACRES **ZEDA** 42L {DBP}

C03104335 Jan 11 2023 TSA 42L Polled

KCF BENNETT HOMEWARD C776
KCF BENNETT TOP SHELF H404
KCF MISS S100 Y531

NJW 73S W18 HOMETOWN 10Y ET
KCF MISS 22S Z301 ET
KCF BENNETT 9126J S100
KCF MISS REVOLUTION W598

GHC SCHWARZKOPF 125E
AIRRIESS-ACRES ZEDA 37H
GHC MISS UNIQUE 25Z

SHF CANNON Z210 C95
GHC MISS GALAXY ET 208Z
BBSF 101N WRANGLER 29W
GHC MISS NANCY 80P

EPDS BW 2.6 WW 62.2 YW 100.6 MM 29.8 TM 60.9

LOT 28 AIRRIESS-ACRES **FANTASIA** 54L {HYP}

C03104481 Jan 15 2023 TSA 54L Polled

SHF DAYBREAK Y02 D287 ET
SHF HORIZON D287 H022 ET
SHF TIME 001A D81

SHF YORK 19H Y02
SHF MISS M326 T08 ET
GERBER ANODYNE 001A
SHF TIME 42X A140

GHC SCHWARZKOPF 125E
AIRRIESS-ACRES FANTASIA 52G
AIRRIESS-ACRES FANCY 42D

SHF CANNON Z210 C95
GHC MISS GALAXY ET 208Z
NJW 51U 4037 DURAMAX 8X
SQUARE-D NORA 680A

EPDS BW 1 WW 57.5 YW 87.4 MM 27.1 TM 55.9

Birthweight: 76lbs.

A complete cherry red H022 made heifer. We expect her to have a nice complete level udder as the H022 females have been very impressive first calvers. Ranks top 10% udder suspension and top 25% marbling.

AI bred on April 22 to Gerber High Time H65. Exposed from May 17 - July 30, 2024 to SHF Kerosene 589 K084 ET. Preg check confirms safe to AI date.



High Time AI SIRE





PCL 4013 Gainer 11G SIRE

LOT 29 AIRRIESS-ACRES **ARIZONA** 63L {HYP}

C03104485 Jan 16 2023 TSA 63L Polled

INNISFAIL WHR X651/723 4013 ET
PCL 4013 GAINER 11G
 PCL REAL LADY 44U 9A

EFBEEF TFL U208 TESTED X651 ET
 INNISFAIL P230 T723
 NJW 98S DURANGO 44U
 PCL REAL LADY 17T 91Y

GHC SCHWARZKOPF 125E
AIRRIESS-ACRES ARIZONA 81J
 WCC 29B YELLOW ROSE 729E

SHF CANNON Z210 C95
 GHC MISS GALAXY ET 208Z
 REMITALL-W CLOSING TIME ET 10B
 BLAIR-ATHOL 0124 LA SENZA 29B

EPDS BW 2.6 WW 62.7 YW 91 MM 31.8 TM 63.2

Birthweight: 86lbs.

Stylish made bred heifer that carries lots of depth. Very happy with DAWM 11G females as udders and maternal have been impressive. Ranks in the top 10% for maternal calving ease and MPI.

Exposed to SHF Kerosene 589 K084 ET from April 23 - July 30, 2024. Preg checked on July 30 confirms 55 days bred therefore bred for mid March calf



RS GERBER HIGH TIME H65 {DLF HYF IEF MSUDF MDF DBF}

C03095216 May 28 2020 GRBR H65 Polled

KCF BENNETT REVOLUTION X51
GERBER CANAAN 041C
 GERBER 627S TRISH 934W

MSU TCF REVOLUTION 4R
 KCF MISS PROFICIENT U201
 GERBER SQUIRE 627S
 GERBER 106F TRISH 367N

MOHICAN THM EXCEDE Z426
GERBER Z426 DIXIE E066
 SCHU-LAR EFBEEF 2013 DIXIE 9X

TH 133U 719T UPGRADE 69X
 NJW M326 UNFORGETTABLE 76W ET
 R PUCKSTER 2013
 SCHU-LAR EFBEEF M326 DIXIE 819ET

EPDS BW 0.5 WW 71.2 YW 112.6 MM 26.9 TM 62.5



RS NJW 119E 87G ENDORSEMENT 216J {DLF HYF IEF MSUDF MDF DBF}

C03102592 Mar 7 2021 119E 216J Polled

/S MANDATE 66589 ET
NJW 133A 6589 MANIFEST 87G ET
 BW NJW 76S 8Y HOMESPUN 133A

R LEADER 6964
 /S LADY DOMINO 0158X
 NJW 73S HOMETOWN 10Y ET
 NJW 55N STARDUST 76S

NJW 76S 88X CIRCLEBOSS 164C ET
NJW 8B 164C LEXY 119E
 NJW 149Z 10W LEXY 8B

NJW 98S R117 RIBEYE 88X ET
 NJW 55N STARDUST 76S
 LJR 023R WHITMORE 10W
 NJW 27R 100W LEXY 149Z

EPDS BW -1.8 WW 53.6 YW 89.6 MM 28.1 TM 54.9

Birthweight: 100lbs.

Comes out a nice cow family that does well for us every year. Very happy with the 4H daughters and how they have been turning out. Cherry red moderate made heifer that carries lots of depth to her. Ranks top 10% for yearling weight and 25% weaning weight.

AI bred on April 26 to NJW 119E 87G Endorsement 216J. Exposed from May 17 - July 30, 2024 to SHF Kerosene 589 K084 ET. Preg check confirms safe to AI date



LOT 30 AIRRIESS-ACRES **DEIDRA** 76L {DBP}

C03104490 Jan 20 2023 TSA 76L Polled

WHITEHAWK WARRIOR 845C ET
CRITT PROSPECT ET 4H
HAROLDSONS JVJ SARAH 521X 14Z

UPH PROSPECTOR P152
GRANDVIEW CMR 4003 BETH Y115ET
TH 122 71I VICTOR 521X ET
HAROLDSON'S ANL SARAH T100 35W

ANL 17A HI TECH 58W 80C
AIRRIESS-ACRES DREAM GIRL 25E
ANL 17U TAMMY 96A

TH 113W 11X HI-TECH 17A
MOHICAN VIOLET 58W
ANL P606 UNIVERSE ET 17U
MA 744T TAMMY 16U 47Y

EPDS BW 4.7 WW 63.1 YW 108.6 MM 30.7 TM 62.3

LOT 31 AIRRIESS-ACRES **HARMONY** 25L

C03104094 Jan 05 2023 TSA 25L Polled

WHITEHAWK WARRIOR 845C ET
CRITT PROSPECT ET 4H
HAROLDSONS JVJ SARAH 521X 14Z

UPH PROSPECTOR P152
GRANDVIEW CMR 4003 BETH Y115ET
TH 122 71I VICTOR 521X ET
HAROLDSON'S ANL SARAH T100 35W

LOEWEN ALL STAR 4A 10C
AIRRIESS-ACRES MISS TANGO 107G
GHC C5 MISS TANGO 84B

SHF ALL STAR 42X A191
LOEWEN MISS ON TARGET 29X 4A
JSF RELOAD 59U
GHC MISS FANTASIA 7T

EPDS BW -0.2 WW 52.9 YW 84.7 MM 33.9 TM 60.4

Birthweight: 70lbs.

Here's a structurally correct red necked female that always seems to get spotted in the pen. We really like this heifer and we have a full sister calved out this year that is really impressive as she has a balanced udder and a big bull calf at her side. I think you will be pleased with any progeny from him. Ranks top 10% birth weight, MPI, FMI, top 15% milk, scrotal circ., top 20% calving ease, maternal calving ease.

AI'd on April 9 to High Times. Exposed to SHF Kerosene K084 May 4 - July 30, 2024. Preg checked on July 30 confirms safe to AI date





Birthweight: 82lbs.
 Dark red smooth made heifer.
 Ranks top 15% yearling weight,
 top 20% scrotal, top 25%
 weaning weight and milk.
**AI bred May 2 to SHF Horizon
 D287 H022 ET. Exposed from
 May 17-July 30 to SHF Kerosene
 589 K084 ET. Preg checked on
 July 30 confirms 70-75 days
 bred**

LOT 32 AIRRIESS-ACRES **LINDA** 102L

C03109115 Feb 19 2023 TSA 102L Polled
 WHITEHAWK WARRIOR 845C ET
CRITT PROSPECT ET 4H
 HAROLDSONS JVJ SARAH 521X 14Z
 TH 13Y 358C BOTTOM LINE 206E
ROSELAWN MISS LINER 206E 35H
 ROSELAWN HANNA 62Y 53B
 UPH PROSPECTOR P152
 GRANDVIEW CMR 4003 BETH Y115ET
 TH 122 71I VICTOR 521X ET
 HAROLDSON'S ANL SARAH T100 35W
 TH 403A 475Z PIONEER 358C ET
 TH 54W 719T BETH 13Y
 BBSF 29W YAMAHA 62Y
 ROSELAWN RHENA 121R 22U

EPDS BW 2.5 WW 61.8 YW 103.8 MM 31.7 TM 62.6

LOT 33 AIRRIESS-ACRES **GAIL** 128L {HYP}

C03109112 Mar 29 2023 TSA 128L Polled
 WHITEHAWK WARRIOR 845C ET
CRITT PROSPECT ET 4H
 HAROLDSONS JVJ SARAH 521X 14Z
 SHF MANNING W18 Z22
GHC C5 MISS GOVERNESS 50C
 GHC C5 MISS DOMINO 93A
 UPH PROSPECTOR P152
 GRANDVIEW CMR 4003 BETH Y115ET
 TH 122 71I VICTOR 521X ET
 HAROLDSON'S ANL SARAH T100 35W
 SHF WONDER M326 W18 ET
 SHF PROGRESS T148
 WR DOMINO LAD 309 0614
 GHC MISS DEW ET 13Y

EPDS BW 2.2 WW 60 YW 95.6 MM 32.8 TM 62.8



Birthweight: 80lbs.
 Well balanced made heifer
 out a productive cow. She has
 been shown at Bonanza and
 placed second in her class. Gail
 is pigmented and is red necked.
 Ranks top 10% in scrotal, top 20%
 milk.
**AI bred April 23 to SHF Horizon
 D287 H022 ET. Exposed from
 May 17-July 30 to SHF Kerosene
 589 K084 ET. Preg check
 confirms safe to AI date.**

Embryo LOT



GHC C5 Attention 155E **Son of 58C**
Cannon C95 x Miss Duchess 58C



TSA 20L **Maternal Brother to Embryos**
Perfecto 84F x Miss Duchess 58C



TSA 28K **Maternal Sister to Embryos**
High Selling Calf at CWA Hereford 2022



LOT 34 3 CONVENTIONAL EMBRYOS

AKJA 58C X GERBER HIGH TIME H65

GERBER CANAAN 041C
GERBER HIGH TIME H65
GERBER Z426 DIXIE E066

KCF BENNETT REVOLUTION X51
GERBER 627S TRISH 934W
MOHICAN THM EXCEDE Z426
SCHU-LAR EFBEEF 2013 DIXIE 9X

NJW 100W FOUNDATION 54Z ET
GHC C5 MISS DUCHESS 58C
GHC MISS UNIQUE 25Z

NJW 73S M326 TRUST 100W ET
NJW 25C 1A VACA 12E
BBSF 101N WRANGLER 29W
GHC MISS NANCY 80P

H65 C03095216 May 28 2020 GRBR H65 Polled || **58C** C03008443 Feb 18 2015 AKJA 58C Polled

PE BW 2.9 WW 64.8 YW 100.1 MM 30.2 TM 62.7

Selling 3 conventional embryos off of AKJA 58C x Gerber High Times H65.
Great opportunity to purchase this mating as AKJA 58C is well known in the Hereford industry and High Times is becoming a popular bull.
We are excited to see these offspring.

Three (3) Embryos stored at Bovigen (Moose Jaw, SK).

Twin View POLLED HEREFORDS



LOT **35** TWIN-VIEW 130G **RITA** 20L (HYP)

C03104722 Feb 11 2023 TNVW 20L Polled

TWIN-VIEW 39S BENTLEY 20C
TWIN-VIEW 20C BENSON 130G
GHC MISS SYBIL 94D

GHC SPOT LIGHT 39S
TWIN-VIEW 24H FANNY 57T
GHC MACH 125A
GHC MISS DYNA 31Z
GHC NEVER LOOK BACK ET 30N
MCCOY 58G CONNIE 18K
HARVIE LADIES MAN 4L
OSF COLBI 139S ET 207U

MCCOY 30N APPLAUSE ET 99W
TWIN-VIEW 99W TEMPERLEY 75C
TWIN-VIEW 4L ALICE 2Z

EPDS BW 6.4 WW 56.2 YW 89.6 MM 22.8 TM 50.9

Birthweight: 83lbs.

Awe, pretty Rita. She has remarkable eye appeal, with a notably clean front third and a robust, powerful hip and rib. Her mother, a daughter of TWIN-VIEW 4L ALICE 2Z, has consistently produced stunning daughters that have excelled in performance for us. Both the AI and pasture bull options offer rich pigment and dark red color. She's one you won't want to overlook.

AI bred to Churchill Amsterdam 247K ET on April 18, 2024. Pasture exposed to Twin-View 21E Hefner 147L from May 18 -24, 2024. Pasture exposed to Twin-View 121C Bandit 21E from May 24-July 30, 2024.



LOT
35

Birthweight: 100lbs.

This big lady is a big deal. She's a long, impressive heifer with a commanding presence in the pasture—a promising future brood cow! Paired with Hedman 44J, she has significant potential.

Pasture exposed to Twin-View 72E Hedman 44J from May 4-Aug 10, 2024.



Hedman **SERVICE SIRE**

LOT 36 TWIN-VIEW 358C **MARLI-MAY** 10L {DLP HYP}

C03104716 Feb 03 2023 TNVW 10L Polled

TH 89T 755T STOCKMAN 475Z
TH 403A 475Z PIONEER 358C ET
TH 71U 17Y RITA 403A

TH 122 71I VICTOR 719T
TWIN-VIEW 719T MYLA MAY 4G
TWIN-VIEW 99W MACY MAY 64E

TH 223 71I VICTOR 755T
TH 16G 20N GEMINI 89T
TH 22R 16S LAMBEAU 17Y
TH 7N 45P RITA 71U
DRF JWR PRINCE VICTOR 71I
KBCR 19D DOMINETTE 122
MCCOY 30N APPLAUSE ET 99W
TWIN-VIEW 39S MCKENNA 75X

EPDS BW 5.5 WW 72.9 YW 121 MM 29.9 TM 66.4

LOT 37 TWIN-VIEW 401G **VONDA** 3L {HYP}

C03104710 Jan 27 2023 TNVW 3L Polled

CHURCHILL ROCK 646D ET
MHPH 646D GUNFIRE ET 401G
MHPH 301W DAINTY 205Y

GHC -TABOO CADILLAC 48C
TWIN-VIEW 48C VANETTA 98J
TWIN-VIEW 99W VANESSA 176D

NJW 98S R117 RIBEYE 88X ET
SR CCC LADYSPORT 2205 Z ET
MHPH 102S WYATT 301W
MHPH MS 101S DAINTY 123U
GHC ATLAS BEEFMAN 135Z
HAROLDSON'S CARLOTTA 45P 30X
MCCOY 30N APPLAUSE ET 99W
TWIN-VIEW 88U VENUS 48Y

EPDS BW 3.2 WW 54.3 YW 88.1 MM 27.8 TM 55

Birthweight: 80lbs.

An intriguing genetic blend! The Gunfire lineage is well-regarded and has been effective for many. Her mother is a proven cow with an excellent udder shape.

AI bred to SHF Kilogram F158 K390 ET on April 18, 2024. Pasture exposed to Twin-View 21E Hefner 147L from May 18 - 24, 2024. Pasture exposed to Twin-View 121C Bandit 21E from May 24-July 30, 2024.



Gunfire **SIRE**

TWIN VIEW POLLED HEREFORDS 27



LOT
38

LOT **38** TWIN-VIEW 44J **GEORGETTE** 26L (DLP HYP)

C03104726 Feb 13 2023 TNVW 26L Polled

GHC WESTERMAN 72E
TWIN-VIEW 72E HEDMAN 44J
GHC MISS HUDSON 91B

SHF CANNON Z210 C95
GHC MISS BLANCHE 37Z
SHF MOORE R117 Z40
GHC MISS WILMA 176Y

TWIN-VIEW 121C BANDIT 21E
TWIN-VIEW 21E EMMYLOU 46H
TWIN-VIEW 39S BOBBY JOE 6W

PCL CHEROKEE 49Y 121C
DTHF CARMAN 148C
GHC SPOT LIGHT 39S
TWIN-VIEW 24H FANNY 57T

EPDS BW 0.3 WW 48.4 YW 70.4 MM 17 TM 41.2

Birthweight: 78lbs.

This striking daughter of Hedman 44J has exceptional eye appeal, featuring a rich dark color and plenty of pigment. Her 6W granddam was a valued member of our herd, making Georgette a truly special heifer that's hard to part with.

AI bred to H Montgomery 7437 ET on April 18, 2024. Pasture exposed to Twin-View 48C Harry Styles 91K from May 18 - Aug 13, 2024.



Montgomery **AI SIRE**



Harry Styles **EXPOSURE**

28 TWIN-VIEW POLLED HEREFORDS

H E D M A N



LOT
39

LOT 39 TWIN-VIEW 44J **DEBRA** 47L (HYP DBP)
C03104734 Feb 18 2023 TNVW 47L Polled

GHC WESTERMAN 72E	SHF CANNON Z210 C95
TWIN-VIEW 72E HEDMAN 44J	GHC MISS BLANCHE 37Z
GHC MISS HUDSON 91B	SHF MOORE R117 Z40
	GHC MISS WILMA 176Y
	PCL CHEROKEE 49Y 121C
TWIN-VIEW 121C REIGNS 94F	GHC MISS HUDSON 91B
TWIN-VIEW 94F DAPHNE 23H	WLB BULL 90X 15Z
TWIN-VIEW 15Z DEIRDRE 2F	TOP-50 DEZIRE 19D

Birthweight: 90lbs.
 Another impressive Hedman daughter displaying stunning markings and a rich red hue. Debra's granddam is a standout, earning Grand Champion Female at the 2022 Field Day and Reserve Grand Champion at Manitoba Ag-Ex in 2022 with her bull calf Twin-View 24E Whizbang 7K who is now a herdsire at Twin View.
Pasture exposed to Twin-View 48C Harry Styles 91K from May 5 - Aug 13, 2024.



Hedman **SIRE** Granddam of 23H 2022 CWA Reserve Grand Champion

S I S T E R S TWIN VIEW POLLED HEREFORDS 29



Birthweight: 103lbs.
 Backed by a strong pedigree, this female benefits from the proven longevity and strength of her 55C dam. Our 48C daughters have become key foundation females in our herd, and we seldom let them go. Her breeding match makes her a standout.

AI bred to SHF Kilogram F158 K390 ET on April 18, 2024. Pasture exposed to CRITT Scrutiny 19K from May 18, 2024 to Aug 8, 2024.



Kilogram AI SIRE

LOT 40 TWIN-VIEW 48C **CLAUDIA** 56L {DBP}

C03104738 Feb 21 2023 TNVW 56L Polled

GHC ATLAS BEEFMAN 135Z
GHC -TABOO CADILLAC 48C
 HAROLDSON'S CARLOTTA 45P 30X

GHC JACKPOT 185W
 GHC MISS ROSEANNE 3N
 NJW FHF 9710 TANK 45P
 GHC MISS CARLOTTA 78N

TWIN-VIEW 4L MACK DADDY 83Z
TWIN-VIEW 83Z CALLIDORA 55C
 TWIN-VIEW 76Y DORA 39A

HARVIE LADIES MAN 4L
 TWIN-VIEW 6L MCKENZIE 101U
 GHC CT SAMSON 76Y
 PCL DODY 57T 3X

EPDS BW 4.9 WW 49.9 YW 88 MM 21.3 TM 46.3

LOT 41 TWIN-VIEW 130G **BECCALYNN** 85L {HYP DBP}

C03104747 Feb 28 2023 TNVW 85L Polled

TWIN-VIEW 39S BENTLEY 20C
TWIN-VIEW 20C BENSON 130G
 GHC MISS SYBIL 94D

GHC SPOT LIGHT 39S
 TWIN-VIEW 24H FANNY 57T
 GHC MACH 1 25A
 GHC MISS DYNA 31Z

KTCT 46C BAYDEN 11F
PBHR BECCA 48B 92H
 TIL-TOBA BECCA 55Y 48B

HAROLDSON'S RHINO 48Y 46C
 KTCT 10X RUBY 40Z
 MEADOW-ACRES CONNECTED 13K 86R
 TIL-TOBA YOLLA 4U 55Y

EPDS BW 7.9 WW 59 YW 97 MM 22.8 TM 52.3



Birthweight: 100lbs.
 It's difficult not to appreciate the eye-catching appeal of this very feminine and clean-fronted heifer. Her dam, acquired from Manns Herefords, has proven to be a valuable addition for us. Our home-raised 130G bull has produced daughters with beautiful udders. Both the AI and pasture bull options offer abundant pigment. This is a heifer to keep an eye on.

AI bred to Churchill Amsterdam 247K ET on April 18, 2024. Pasture exposed to Twin-View 21E Hefner 147L from May 18 -24, 2024. Pasture exposed to Twin-View 121C Bandit 21E from May 24-July 30, 2024.

Birthweight: 65lbs.

We've seen excellent results from pairing our calving-ease Reigns 48H bull with the 719T genetics. Lucy Lui's dam descends from GHC-Taboo Cadillac 48C, renowned for the exceptional udder shape and size that many aspire to. We're thrilled about the potential of her breeding match-up.

AI bred to Churchill Amsterdam 247K ET on April 18, 2024. Pasture exposed to CRITT Scrutiny 19K from May 18, 2024 to Aug 8, 2024.



Amsterdam AI SIRE



LOT 42 TWIN-VIEW 48H **LUCY LUI** 31L {HYP}

C03104729 Feb 14 2023 TNVW 31L Polled

TWIN-VIEW 121C REIGNS 94F
TWIN-VIEW 94F REIGNS JR 48H
TWIN-VIEW 83Z HARPER 39F

TH 122 71I VICTOR 719T
TWIN-VIEW 719T LULIE 15H
TWIN-VIEW 48C LULA MAE 130F

PCL CHEROKEE 49Y 121C
GHC MISS HUDSON 91B
TWIN-VIEW 4L MACK DADDY 83Z
TWIN-VIEW 39S HELMA 43B
DRF JWR PRINCE VICTOR 71I
KBCR 19D DOMINETTE 122
GHC -TABOO CADILLAC 48C
TWIN-VIEW 4L STELLA 111Y

EPDS BW -2.4 WW 41.8 YW 61.2 MM 26.6 TM 47.5

LOT 43 TWIN-VIEW 95G **BESSIE ANN** 41L

C03105902 Feb 17 2023 TNVW 41L Polled

TWIN-VIEW 4L MACK DADDY 83Z
TWIN-VIEW 83Z MOOMOOAA 95G
GHC MISS HUDSON 91B

MCCOY 30N APPLAUSE ET 99W
TWIN-VIEW 99W BETTY ANN 37E
TWIN-VIEW 39S BOBBY JOE 6W

HARVIE LADIES MAN 4L
TWIN-VIEW 6L MCKENZIE 101U
SHF MOORE R117 Z40
GHC MISS WILMA 176Y
GHC NEVER LOOK BACK ET 30N
MCCOY 58G CONNIE 18K
GHC SPOT LIGHT 39S
TWIN-VIEW 24H FANNY 57T

EPDS BW 4.2 WW 49.4 YW 80.4 MM 22.8 TM 47.5

Birthweight: 102lbs.

The "Jason" Moomooa daughters are known for their length and style, but above all, their functionality. Bessie Ann hails from a hardworking lineage of cows renowned for their reliability and strong maternal traits.

Pasture exposed to Twin-View 72E Hedman 44J from May 4-Aug 10, 2024.

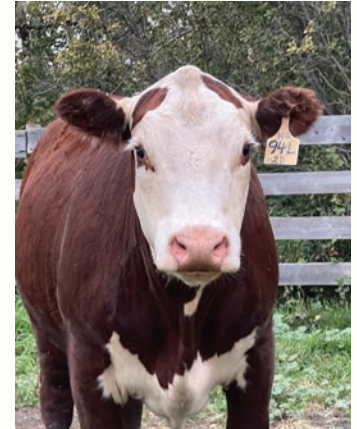


"Jason" Moomooa SIRE





Birthweight: 94lbs.
 A moderately shaped "Jason" daughter. Her cute markings have helped her stand out on pasture tours this summer.
AI bred to SHF Kilogram F158 K390 ET on April 18, 2024.
Pasture exposed to Twin-View 48C Harry Styles 91K from May 18 - Aug 13, 2024.



LOT 44 TWIN-VIEW 95G **TAWNI** 94L

C03104752 Mar 01 2023 TNVW 94L Polled

- | | |
|------------------------------------|----------------------------|
| TWIN-VIEW 4L MACK DADDY 83Z | HARVIE LADIES MAN 4L |
| TWIN-VIEW 83Z MOOMOOAA 95G | TWIN-VIEW 6L MCKENZIE 101U |
| GHC MISS HUDSON 91B | SHF MOORE R117 Z40 |
| | GHC MISS WILMA 176Y |
| | GHC SPOT LIGHT 39S |
| TWIN-VIEW 39S THE BACHELOR 25A | TWIN-VIEW 3Z NADINE 27K |
| TWIN-VIEW 25A TEMPERANCE 2D | GLENLEES 50S REDLINE 30X |
| PBHR GOSSIP 17U 41A | PBHR GOSSIP 81L 17U |

EPDS BW 3.3 WW 47.1 YW 74.8 MM 22.9 TM 46.5

LOT 45 TWIN-VIEW 8J **TRUDY** 143L

C03104777 Mar 19 2023 TNVW 143L Polled

- | | |
|-------------------------------------|---------------------------|
| WORR OWEN TANKERAY Y79D ET | NJW FHF 9710 TANK 45P |
| TWIN-VIEW Y79D CHUNKAMONK 8J | BR KLD ROSE MARIE D79 ET |
| TWIN-VIEW 34B LYDIA 70D | TWIN-VIEW 25Z ZHIVAGO 34B |
| | TWIN-VIEW 1S SQUIRT 65W |
| | GHC SPOT LIGHT 39S |
| TWIN-VIEW 39S THE BACHELOR 25A | TWIN-VIEW 3Z NADINE 27K |
| TWIN-VIEW 25A TRINA 19D | GHC CARDINAL 57T |
| PCL ALANNA 57T 15Y | GWG 37L ALANNA 24R |

EPDS BW 1 WW 42.6 YW 68.6 MM 28.7 TM 50



Birthweight: 80lbs.
 The Chunkamont females have really impressed us this year with their capacity and natural growth. Trudy's dam has been a great producer for us year after year. Her pedigree is packed with exceptional maternal genetics, giving us every confidence that she'll make fantastic mother.
AI bred to SHF Kilogram F158 K390 ET on April 18, 2024.
Pasture exposed to Twin-View 21E Hefner 147L from May 18 -24, 2024. Pasture exposed to Twin-View 121C Bandit 21E from May 24-July 30, 2024.



Chunkamont **SIRE**



LOT
46

LOT **46** TWIN-VIEW 35J **INGRID** 134L (HYP DBP)

C03104768 Mar 13 2023 TNVW 134L Polled

TH 403A 475Z PIONEER 358C ET
ROSELAWN PIONEER 358C ET 35J
ROSELAWN PIPER 154U 25B

TH 89T 755T STOCKMAN 475Z
TH 71U 17Y RITA 403A
HARVIE OVHF WALK HARD 154U
ROSELAWN PAYTON 10W 42Y

PCL 118U DODGE 3D
DTHF HELGA 23H
DTHF CALLISTA 23C

MHPH 101S UMPIRE 118U
GHC MISS TRUST 54B
DTHF MAXIMUS 3X
DTHF TANYA 44T

Birthweight: 84lbs.

Freckles anyone? This heifer is a powerhouse, descending from a solid Doug Troop cow and the renowned Pioneer grandsire. She's thick, powerful, and well-constructed. She's sure to develop into an exceptional cow.

Pasture exposed to Twin-View 72E Hedman 44J from May 4 - Aug 10, 2024.

EPDS BW 2.6 WW 59.6 YW 94.7 MM 30.3 TM 60.1



Pioneer **SIRE**

POWERHOUSE
heifer RIGHT HERE
BACKED BY
RENOWNED GENETICS
LIKE PIONEER, TRUST, & DAYDREAM
THICK • POWERFUL • WELL-CONSTRUCTED



LOT
47

LOT 47 TWIN-VIEW 130G **ELISA** 34L {HYP}

C03104731 Feb 15 2023 TNVW 34L Polled

TWIN-VIEW 39S BENTLEY 20C
TWIN-VIEW 20C BENSON 130G
GHC MISS SYBIL 94D

GHC SPOT LIGHT 39S
TWIN-VIEW 24H FANNY 57T
GHC MACH 1 25A
GHC MISS DYNA 31Z
DRF JWR PRINCE VICTOR 71I
KBCR 19D DOMINETTE 122
TWIN-VIEW 99W SIMPLY FUN 28Z
TWIN-VIEW 25Z LOGAN 7B

TH 122 71I VICTOR 719T
TWIN-VIEW 719T ELEANOR 12H
TWIN-VIEW 28Z EMILY 87F

Birthweight: 100lbs.

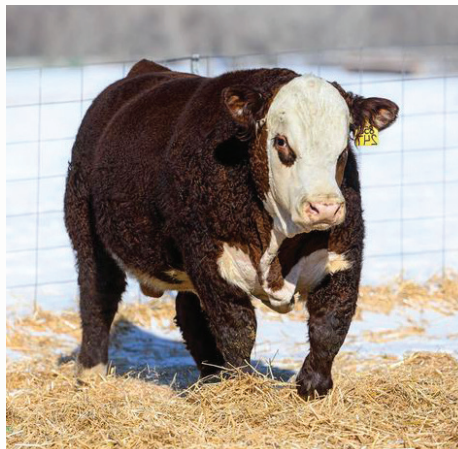
Elisa 34L is beautifully constructed and exceptionally complete. She carries herself with pride and has a knack for standing out in a crowd. With a big rib and a well-formed hip, she makes a strong impression. Her Maternal sister sells as lot 48. A full sister sold at the 2023 Good As Gold sale to Acorn Ridge Polled Herefords in Kleefeld, MB. The consistency of the 12H dam provides a lot of confidence.

AI bred to Churchill Amsterdam 247K ET on April 18, 2024. Pasture exposed to Twin-View 72E Hedman 44J from May 18-Aug 10, 2024.

EPDS BW 5.8 WW 57 YW 98.8 MM 22.3 TM 50.8



Udder of 12H **DAM**



Amsterdam **AI SIRE**



Hedman **EXPOSURE**

34 TWIN VIEW POLLED HEREFORDS

M A T E R N A L



LOT **48** TWIN-VIEW 147E **ELLIE** 2M {HYP}

C03114812 Jan 27 2024 TNVW 2M Polled

RST X51 REVOLUTION 4102
HILLS-GALORE 44Z REWIND 147E
 HILLS-GALORE 52R CALLI 44Z

KCF BENNETT REVOLUTION X51
 RST MS 1030 TOP SECRET 5128
 JB 531 BRAXTON CAL 605U
 HILLS-GALORE 32G MAY 52R
 DRF JWR PRINCE VICTOR 71I
 KBKR 19D DOMINETTE 122
 TWIN-VIEW 99W SIMPLY FUN 28Z
 TWIN-VIEW 25Z LOGAN 7B

TH 122 71I VICTOR 719T
TWIN-VIEW 719T ELEANOR 12H
 TWIN-VIEW 28Z EMILY 87F

Birthweight: 80lbs.
 You won't want to miss this Rewind daughter our of one our best performing females. There is so much length and size to this calf. She's been a standout since birth and continues to impress us. Her gentle temperament also makes her an excellent prospect for juniors.

Twin View Polled Herefords Reserves Show Rights on 2M.

EPDS BW 0.7 WW 57.4 YW 93.7 MM 28.6 TM 57.3



Rewind **SIRE**



X51 **GREAT GRANDSIRE**



Victor **GRANDSIRE**

STANDOUT
 SINCE *birth*

S I S T E R S TWIN VIEW POLLED HEREFORDS 35



Birthweight: 100lbs.
 This striking "Jason" Moomooa daughter is notably dark and well-marked. Her dam is known for her substantial size and udder shape, and we believe this heifer calf will grow into an outstanding female.



Udder of 36G DAM

LOT 49 TWIN-VIEW 95G **MARLIE** 71M {HYP}

C03114845 Feb 18 2024 TNVW 71M Polled

TWIN-VIEW 4L MACK DADDY 83Z	HARVIE LADIES MAN 4L
TWIN-VIEW 83Z MOOMOOAA 95G	TWIN-VIEW 6L MCKENZIE 101U
GHC MISS HUDSON 91B	SHF MOORE R117 Z40
	GHC MISS WILMA 176Y
	SHF CANNON Z210 C95
GHC WESTERMAN 72E	GHC MISS BLANCHE 37Z
TWIN-VIEW 72E MAREN 36G	TWIN-VIEW 25Z ZHIVAGO 34B
TWIN-VIEW 34B MEG 27E	TWIN-VIEW 99W CHEYENNE 93C

EPDS BW 5.3 WW 56.8 YW 87.7 MM 22.4 TM 50.8



"Jason" Moomooa **SIRE**



SUBSTANTIALLY OUTSTANDING
 - A FANTASTIC FEMALE IN THE MAKING RIGHT HERE -



LOT
50

LOT **50** TWIN-VIEW 8J **MCKAYKAY** 135M {DLP HYP}

C03114867 Mar 02 2024 TNVW 135M Polled

WORR OWEN TANKERAY Y79D ET	NJW FHF 9710 TANK 45P
TWIN-VIEW Y79D CHUNKAMONK 8J	BR KLD ROSE MARIE D79 ET
TWIN-VIEW 34B LYDIA 70D	TWIN-VIEW 25Z ZHIVAGO 34B
	TWIN-VIEW 1S SQUIRT 65W
	GHC NEVER LOOK BACK ET 30N
MCCOY 30N APPLAUSE ET 99W	MCCOY 58G CONNIE 18K
TWIN-VIEW 99W MCKAYLA 179D	GHC SPOT LIGHT 39S
TWIN-VIEW 39S MCKENNA 75X	TWIN-VIEW 6L MCKENZIE 101U

Birthweight: 100lbs.
Her dam is just one of those cows that continues to get it done every year. We have absolutely loved our daughters out of 179D and combined with the Chunkamonk? Oh yeah, she's the real deal!

EPDS BW 4.6 WW 54.6 YW 88 MM 29.5TM 56.8



Chunkamonk **SIRE**



179D with 135M at side

Rock-N-Roll **POLLED HEREFORDS**



Churchill Sheriff 900G ET **SIRE OF 65L & 1M**



Ladysport **GRANDDAM**



Blueprint **GRANDSIRE**

LOT **51** ROCK-N-ROLL **HOTSEAT** 65L {HYP}

C03113471 Dec 17 2023 KRS 65L Polled

BOYD 31Z BLUEPRINT 6153
CHURCHILL SHERIFF 900G ET
 SR CCC LADYSPORT 2205 Z ET

R LEADER 6964
 NJW 91H 100W RITA 31Z ET
 THM DURANGO 4037
 NJW BW LADYSPORT DEW 78P ET
 KCF BENNETT 3008 M326
 NJW P606 72N DAYDREAM 73S
 BNMHPH 13P HEAT 101S
 ROCK-N-ROLL YAKETY YAK 10C

EPDS BW 2.9 WW 62.9 YW 102.6 MM 29.4 TM 60.9

Birthweight: 80lbs

Females out of the Churchill Sheriff bull that both bring a solid pedigree that is generations deep. They have balanced EPDs and a lot of promise.



TH 523F 738C Sleep On 163H **SIRE OF 3M**

LOT **52** ROCK-N-ROLL **TIK-TOK** 1M {HYP}

C03113472 Jan 1 2024 KRS 1M Polled

BOYD 31Z BLUEPRINT 6153
CHURCHILL SHERIFF 900G ET
 SR CCC LADYSPORT 2205 Z ET

R LEADER 6964
 NJW 91H 100W RITA 31Z ET
 THM DURANGO 4037
 NJW BW LADYSPORT DEW 78P ET
 NJW 73S W18 HOMETOWN 10Y ET
 REMITALL MARVEL 78T
 OVHF DESTINATION ET 2Y
 ROCK-N-ROLL NIGGI YOGGI 9Y

EPDS BW 3.6 WW 61.7 YW 100.3 MM 28.1 TM 59

Birthweight: 80lbs

LOT **53** ROCK-N-ROLL **JODIE** 3M {HYP}

C03113473 Jan 3 2024 KRS 3M Polled

BAR JZ SLEEP ON 738C
TH 523F 738C SLEEP ON 163H
 TH 4021 358C JEWELL 523F ET

W-BAR-M 74Y GAME ON ET 14D
ROCK-N-ROLL JANELLE 212K
 ROCK-N-ROLL JOZIE 68E

HYALITE ON TARGET 936
 BAR JZ VIRGINIA 500Y
 TH 403A 475Z PIONEER 358C ET
 INNISFAIL 723 U208 4021 ET
 REMITALL-WEST GAME DAY ET 74Y
 REMITALL RITA 13T
 BOYD MASTERPIECE 0220
 ROCK-N-ROLL KOZIE 12B

EPDS BW 2.1 WW 57.3 YW 90.4 MM 31.6 TM 60.3

Birthweight: 76

A heifer that has a really stacked pedigree that is worth some review. She has some real breed changers in her background and these genetics will be an asset to any program.

JHF HEREFORDS

Birthweight: 77 lbs.
6M goes back to a Lian Mor cow that was a high seller out of the "Autumn Alliance XXX" sale in 2013. She was a flush cow for us and has left her mark in our herd.



Glitz SIRE



LOT 54 JHF 1G ESSENCE 6M

C03116279 Jan 28 2024 RAJ 6M Polled

INNISFAIL WHR X651/723 4013 ET
PCL 4013 GLITZ 1G
PCL 49Y DAHLILA 111E

ANL 83T ELI ET 8X
JHF ESSENCE 8X 18E
LIAN 49S YESSICA 111Y

EFBEEF TFL U208 TESTED X651 ET
INNISFAIL P230 T723
PCL YUKON R117 ET 49Y
HAROLDSON'S DAHLILA T100 97X
WLB ELI 10H 83T
ANL SBS 36N PEBBLES ET 33R
MCCOY 55M ABSOLUTE 49S
LIAN 229P THELMA 404T

EPDS BW 2.4 WW 60.6 YW 100.3 MM 20.1 TM 50.4

LOT 55 JHF 1G BEAUTY 7M

C03116277 Jan 28 2024 RAJ 7M Polled

INNISFAIL WHR X651/723 4013 ET
PCL 4013 GLITZ 1G
PCL 49Y DAHLILA 111E

SQUARE-D 42S PROGRESS 323Y
WCC 323Y BEAUTY 1529C
GH ADAMS COOPERETTE 129T

EFBEEF TFL U208 TESTED X651 ET
INNISFAIL P230 T723
PCL YUKON R117 ET 49Y
HAROLDSON'S DAHLILA T100 97X
REMITALL SUPER DUTY 42S
SQUARE-D NADIA 323P
CL 1 DOMINO 252M 1ET
GH 45L BRITISHETTE 230P

EPDS BW 7.2 WW 69.4 YW 114.9 MM 27.1 TM 61.8

Birthweight: 97 lbs.
7M is a very attractive Glitz daughter out of a Wascana cow we purchased out of their dispersal in 2019. We have two maternal sisters in the herd and we are very happy with both.



Consignors

LONE PINE CATTLE SERVICES

Lots 1-20
Rob & Dawn O'Connor & Family
Box 158
Vibank, SK S0G 4Y0
Rob's cell: 306-550-4890
roconnor@aginmotion.ca
www.lonepinecattle.net

AIRRIESS ACRES

Lots 21-34
Trevor & Sara Airriess
Box 1073
Wadena, SK S0A 4J0
Trevor's Cell: 306-338-7753
Sara's Cell: 306-338-8310
airriessacres@hotmail.com

TWIN VIEW POLLED HEREFORDS

Lots 35-50
Ken & Janelle Gulka
Ernie & Marge McDonald
Box 236
Strathclair, MB R0J 2C0
Janelle's Cell 204-365-0931
Ken's Cell 431-282-3030
Ernie's Cell 204-365-7426

ROCK-N-ROLL POLLED HEREFORDS

Lots 51-53
Paul Kress
Box 53, Kendal, SK S0G 2P0
306-424-2760

JHF HEREFORDS

Lots 54-55
Raymond, Lindsay, Thomas and Cassidy Johnson
13 RR 1, Leross, SK S0A 2C0
306-795-7772
rayjohnston7772@gmail.com



Terms AND CONDITIONS

TERMS

The terms of the sale are cash or cheque, payable at par at sale location. The right of property shall not pass until after settlement has been made; no invoicing on buyers in attendance unless previous arrangements have been made. Every animal sells to the highest bidder and in cases of disputes, the auctioneer's decision will be final. Announcements from the auction block will take precedence over the printed matter in the catalogue. Current exchange rates will be announced sale day. All monies are in Canadian funds.

CERTIFICATE OF REGISTRATION

Each animal will carry papers issued by the Canadian Hereford Association. A certificate of registry duly transferred will be furnished to the buyer for each animal after payment has been made.

PEDIGREE ESTIMATES

Pedigree Estimates (PE) are created on the projected mating of the animal's sire and dam based on averages of the two, creating estimated values that do not hold the same accuracy of actual EPDs issued from the association and should be used as such.

HEALTH

All animals in the sale have met all necessary health requirements.

GUARANTEE

Each animal becomes the purchaser's risk immediately after the animal is sold. All animals in this sale will be sold under the terms and guarantees set forth by the Canadian Hereford Association with regards to health, freedom from defects and from both reproductive and specific genetic unsoundness.

Pregnancy Information: All serviceable age females have been pregnancy examined by an accredited veterinarian.

INTERNATIONAL BUYERS

Cattle or genetics sold to buyers outside of Canada may require export permits and health certificates. The buyer will be responsible for the costs in producing these export documents.

LIABILITIES

All persons attend the sale at their own risk. The seller, facility owner and sale manager assume no liability, legal or otherwise, for any accidents that occur. It is understood that T Bar C Cattle Co. (2013) Ltd. is acting only as a medium between buyer and seller and is not responsible for any failure on the part of either party to live up to his obligations. Neither does T Bar C Cattle Co. (2013) Ltd. assume any financial obligations to collect or enforce collection of any monies between parties and any legal action that may, in exceptional cases, be taken must be between the buyer and the seller. T Bar C Cattle Co. (2013) Ltd. assumes no responsibility for any credit extended by the seller to the buyer. The buyer must look to the seller for fulfillment of all guarantees and representations made hereunder.

DELIVERY

Assistance will be given in getting your purchases home. Each animal becomes the risk of the purchaser as soon as sold.

PHONE, MAIL, WIRE BIDS

Bidders unable to attend the sale may phone, wire or mail their bids and instructions to the sale manager, auctioneer or special representatives. Bids must be received in sufficient time prior to the sale.

INSURANCE

We strongly recommend that insurance is purchased for full value.

**Return Undeliverable
Canadian Addresses To:**

T Bar C Cattle Co. Ltd
Box 2330
Warman, SK S0K 4S0

