

RIVER VALLEY POLLED HEREFORDS

GENETIC XXX *designs*



W-C

SEPTEMBER 20, 2024 | AT THE FARM, NEWBURGH, ON | 6:30 PM

WELCOME TO **RIVER VALLEY**

Pictured here is Evolve being slapped “Grand Champion Bull” at Agribition last fall. The next day he captured the ultimate title of “Supreme Champion” of the entire show. You’ll see the influence in progeny and services along with limited semen selling throughout this sale.



It's hard to believe that we have reached our 20th sale.

What started out as a 4-H project for Donald with a grade Hereford calf, led to meeting George McNeely, which led to meeting the folks at Onondaga Farms and Gold Bar Livestock, and as the saying goes, the rest is history.

Our first sale on the farm was with Star Lake, and it was a big learning curve. Thankfully we had Montie Soules to guide us along and help organize everyone. Sales preparations have gotten a little easier over time, but the excitement still builds through the summer as September gets closer and closer and those sale butterflies start.

This year we have been blessed with an abundance of rain, and the grass and hay fields are flourishing. There's nothing sweeter than looking at a pasture full of red and whites on green grass at sunset. We are excited about the influence our bull battery is having on our herd. Authority and Cowboss continue to impress and now Evolve and Settler have begun to make their mark. The herd is young and fresh, and with some of the most powerful genetics we believe we have ever had. Whether you're looking for an animal to show, a female to add another element to your herd or a herd sire prospect, we believe you can find it in this grouping.

We're pleased to have Iris Creek Farms and Thurston Livestock with us again this year. Their powerful offerings add another dimension to the sale. Thank you for digging deep and bringing your best.

Please plan to start your Hereford weekend in Ontario by joining us on Friday at 6:30 PM. As always, if we can be of any assistance to you prior to the sale, please contact our office or any of our sale representatives. For our American friends, Dale Stith or Lou Ellen Harr would be happy to be of assistance to you. Please note that Lou Ellen will be at the farm prior to and on sale day. Videos of the cattle are available through our website.

We have made great friendships within the Hereford breed over the years and look forward to many more years to come. Please join us after the sale for a time to renew old acquaintances and make new ones.

Sincerely,

ELWYN, DONALD, AND PAULINE



RIVER VALLEY POLLED HEREFORDS

240 Embury Rd., RR 1
Newburgh, ON, Canada K0K 2S0
Office: 613-378-2701

ONTARIO HEREFORD SALE WEEKEND

FRIDAY, SEPTEMBER 20

RIVER VALLEY GENETIC DESIGNS XX SALE

SATURDAY, SEPT. 21 - ELM LODGE & FRIENDS

SUNDAY, SEPT. 22 - AUTUMN ALLIANCE XLII SALE



It has become an established tradition that every June, Donald and the T Bar crew head out on a pasture tour and analyze the River Valley cows and potential sale cattle. Every year on this day in June, we become more and more blown away with the quality of seedstock that calls the green grass of Newburgh home. The sale offering this year is simply built to impress. Donald and ourselves had a group of over 80 bred heifers to select from, and we whittled down this already highly worthy replacement pen to 21 that will headline the 20th Anniversary of Genetic Designs.

The River Valley cattle come absolutely stacked with a mix of cutting edge and current pedigree, built on a foundation of some of the Hereford world's most proven greats. This year the sires we would like to highlight and encourage you to give extra consideration are the offspring and services of Authority, Evolve, and 4013. The annual RV bull sale is hosted within Genetic Designs, and features a top cut selection of single lot bull calves that are as worthy as any that will sell later on in the Spring, and affords you all the benefits of getting your bull shopping completed early. Standing alongside them are their female pen mates that are at the forefront of the 2024 calf crop.

Generally, the main core of this sale are the young, productive cows. This sale we are lower in numbers, but that is leaps and bounds made up for when you consider the quality is that much more extreme. I would encourage you to make extra note of the services that these prime cows carry, as I believe they are as exciting and modern as the industry has available. The frozen genetic portion of the sale is made up of the world class bull battery that the Embury family has assembled. The semen supply from the now deceased Evolve will only become more limited as demand for the Agribition Supreme Champion continues to grow. Semen from the mainstay and all-around sire of choice Authority is available, as well as from the rare and hard to come by 4013. A feature in this section is the first ever semen offering from Cowboss, this years cover boy... RV have big plans for this outcross herd sire, as we can all see the makings of him leading the next generation charge here in Newburgh.

The Embury cattle and their crew take each and every aspect of raising livestock extremely seriously. Not only are they students of the breed on paper, but they take every aspect of animal husbandry and care to the next level. There is no better place to be a purebred cow than in an Embury pasture. The drive and work ethic for the entire ag sector that we get to see firsthand makes it a joy and privilege to work closely with the Embury family. The knowledge and experience they have is admirable, and it sure does show in the fantastic cow herd they have developed.

As always, if you require any assistance, please do not hesitate to contact any of us on the T Bar team, as we are very much in tune with the RV program.

See you in Newburgh,

Ben Wright



CHRIS 306-220-5006



SHANE 403-363-9973



BEN 519-374-3335



LEVI 204-851-4515



GENETIC XX designs

AUCTIONEER

Chris Poley 306-220-5006

RINGSIDE

Ben Wright 519-374-3335
Shane Michelson 403-363-9973
Levi Rimke 204-851-4515
Carl Wright 519-369-7489

SALE DAY PHONES

Pauline Embury 613-530-5726
Donald Embury 613-328-9065
Heather Ribey 519-389-7745
Bruce Ribey 519-353-8405
Ivor Thurston 613-324-4864
Lou Ellen Harr 419-685-0549

SALE REPRESENTATIVES

Dale Stith 918-760-1550

GUEST CONSIGNORS

Thurston Livestock

Ivor Thurston 613-324-4864
243 Pine Grove Rd, Lanark, ON K0G 1K0

Iris Creek Farms

Bruce 519-353-8405
Heather 519-389-7745
Paisley, ON icf@bmts.com

SALE MANAGEMENT

T Bar C Cattle Co. Ltd.

info@tbarc.com
www.tbarc.com
Office 306-933-4200
View the catalogue online
WWW.BUYAGRO.COM



ONLINE BIDDING AVAILABLE

Mark Shologan 780-699-5082



ACCOMODATIONS

River Valley has reserved a block of rooms at a special rate at the following hotels:

Comfort Inn & Suites 613-900-2100

31 Community Rd, Napanee, ON

Hampton Inn 613-354-5554

40 McPherson Drive, Napanee, ON

ACKNOWLEDGMENTS

Dr. Ron Herron ET Services
Dr. Paul Tuman Nutrition & Health
Braeden Wepler Photography
Matt Buschbeck Sale Cattle
Bay of Quinte Vet Cattle Services

Thank you for all your help!



|| BRED HEIFERS



1A

W-C

1A RVP 112J **DIVINE LASS** ET 97L
 {DLF HYF IEF MSUDF}
 Female Polled RVP 97L C03105312 February 21 2023

NJW 79Z Z311 ENDURE 173D ET
GLENLEES AXA EVOLVE ET 112J
 RVP 106A CAMEO GIRL 45C

KCF BENNETT ENCORE Z311 ET
 BW 91H 100W RITA 79Z ET
 MHPH 521X ACTION 106A
 PCL QUEEN MAKER 118U 61Z

NJW 73S M326 TRUST 100W ET
RVP 100W DIVINE ET 32D
 STAR ROSE GARDON 13X ET

KCF BENNETT 3008 M326
 NJW P606 72N DAYDREAM 73S
 REMITALL ONLINE 122L
 GERBER 774 ROSY LANE 623S

EPD'S CE: 5.1 **BW:** 2.8 **WW:** 58.4 **YW:** 94.8 **M:** 30.1 **TM:** 59.3

BW: 89 WW: 635

Phenomenal Evolve daughter out of foundation cow 32D, who stems from the proven Rose Gardon. Exceptional EPD chart, and mated to our promising Settler. 97L defines the RV program today.

AI Bred to RVPH 73S 34F Settler 159H ET on April 19, 2024. Pasture Exposed to Settler on May 13, 2024.

1B RVP 203D **JOY DEVINE** 69J
 Female Polled RVP 69J C03082116 January 25 2021

NJW 135U 10Y HOMETOWN 27A
NJW 76S 27A LONG RANGE 203D ET
 NJW 55N STARDUST 76S

NJW 73S W18 HOMETOWN 10Y ET
 NJW 4037 34S DURANGO VACA 135U
 NJW BW TRAILDUST 161L
 NJW 57G SPIRIT QUEEN 55N ET

NJW 73S M326 TRUST 100W ET
RVP 100W DIVINE ET 32D
 STAR ROSE GARDON 13X ET

KCF BENNETT 3008 M326
 NJW P606 72N DAYDREAM 73S
 REMITALL ONLINE 122L
 GERBER 774 ROSY LANE 623S

EPD'S CE: 2.1 **BW:** 3.2 **WW:** 60.4 **YW:** 97.8 **M:** 31.4 **TM:** 61.6

BW: 84 WW: 626

Impressive maternal sisters, 69J is cherry red and a producer. Long Range cattle impress us, but more importantly is the dam, 32D. Mated to the now-deceased Supreme Champion Evolve.

Retaining twin heifer calves RVP 58M (Regn. # C03113882) and RVP 59M (Regn. # C03113883) Born February 16, 2024.

AI bred to Glenlees AXA Evolve ET 112J on April 12, 2024. Pasture exposed to NJW 79Z 199B Cowboss 113H ET from May 2, 2024 to July 3, 2024.



Settler || AI Service Sire to 97L



Evolve || Sire of 97L, Service Sire to 69J



RVP 32D || Dam of 97L & 69J



1B

C-W



2

RVP 81E **LOTUS** 93L

Female Polled RVP 93L C03102159 February 20 2023

CHURCHILL SENSATION 028X
NJW 160B 028X HISTORIC 81E ET
 NJW 73S 38W DAYDREAM 160B

UPS DOMINO 3027
 CHURCHILL LADY 7202T ET
 NJW 76S P20 BEEF 38W ET
 NJW P606 72N DAYDREAM 73S

NJW 139C 103C RIDGE 254G
RVPH 160Z254G DAYDREAM 146J ET
 NJW 73S 88X DAYDREAM 160Z

NJW 73S 38W RIDGE 103C ET
 NJW 149Z 88X LEXY 139C ET
 NJW 98S R117 RIBEYE 88X ET
 NJW P606 72N DAYDREAM 73S

EPD'S CE: 3.2 BW: 2.1 WW: 62.9 YW: 91.6 M: 45.4 TM: 76.9

BW: 83 WW: 645

Long, deep bodied, powerful heifer coming out of one of the top cows in the entire herd, 149J. The Daydream cow family is very well known in the Hereford breed as constant producers of top cattle, including the legendary herdsire, Trust. Look at her EPD's (Top 1% Milk) with an early service to the hard to come by Final Print. **AI Bred to RST Final Print 0016 on April 5, 2024. Pasture Exposed to RVPH Settler 159H ET on May 1, 2024.**



Daydream 146J || Dam



Daydream 160Z || Maternal Granddam

BW: 80 WW: 676

Forward x Trust combination that really works, with ideal EPD's (Top 5% Milk, top 10% YW). Bottom side of her pedigree is solid in producers as Touch of Gold really made a mark here at River Valley.

AI Bred to RVPH 73S 34F Settler 159H ET on March 29, 2024. Pasture exposed to Settler on April 17, 2024.



BW: 91 WW: 628

"Dark red, proud-looking female" best describes 21L. Top 3% YW, 10% WW - 21L will be a producer no matter the climate. Serviced to Settler, who calves easy with pound-crushing calves come fall.

AI Bred to RVPH 73S 34F Settler 159H ET on April 12, 2024. Pasture exposed to Settler on May 1, 2024.



3

RVP 252F **LADY LIKE** 33L

Female Polled RVP 33L C03101674 January 15 2023

NJW 160Z 10W WHIT 33B
NJW 79Z 33B FORWARD 252F
BW 91H 100W RITA 79Z ET

LJR 023R WHITMORE 10W
NJW 73S 88X DAYDREAM 160Z
NJW 73S M326 TRUST 100W ET
REMITALL RITA 91H

NJW 73S M326 TRUST 100W ET
RVP 100W DREAM GIRL ET 8D
RVP 36N TOUCH OF GOLD ET 10T

KCF BENNETT 3008 M326
NJW P606 72N DAYDREAM 73S
HF 4L BEYOND 36N
HAROLDSON'S CANDACE 122L 27N

EPD'S CE: 1.9 BW: 2.9 WW: 58.9 YW: 97.7 M: 30.5 TM: 60

4

RVP 87G **DAYLILY** 21L {DBP}

Female Polled RVP 21L C03101672 January 10 2023

/S MANDATE 66589 ET
NJW 133A 6589 MANIFEST 87G ET
BW NJW 76S 8Y HOMESPUN 133A

R LEADER 6964
/S LADY DOMINO 0158X
NJW 73S W18 HOMETOWN 10Y ET
NJW 55N STARDUST 76S

TH 22R 16S LAMBEAU 17Y
SHADY-BIRCH DAYLILY 15D
ELZEVIR DD SHE DEVIL 402B

TH 121L 63N TUNDRA 16S
TH 62N 3L KELSEY 22R
MSU TCF REVOLUTION 4R
ELZEVIR BT DARE DEVIL 207Z

EPD'S CE: 5.4 BW: 2.3 WW: 64.5 YW: 108 M: 25.5 TM: 57.8



5

RVP 112J **LACEY** 29L

Female Polled RVP 29L C03102143 January 14 2023

NJW 79Z Z311 ENDURE 173D ET
GLENLEES AXA EVOLVE ET 112J
 RVP 106A CAMEO GIRL 45C

KCF BENNETT ENCORE Z311 ET
 BW 91H 100W RITA 79Z ET
 MHPH 521X ACTION 106A
 PCL QUEEN MAKER 118U 61Z

NJW 72N P606 GOOD DAY 150X ET
MOHICAN KAREN 73D
 MOHICAN KAREN Z14

PW VICTOR BOOMER P606
 NJW 94J DEW 72N
 TH 133U 719T UPGRADE 69X
 ANL 35U VICTORIA 59X

EPD'S CE: 1.8 BW: 3.8 WW: 61.6 YW: 100.6 M: 35.2 TM: 66

BW: 85 WW: 613

Sale feature no matter the time or place, 29L has the credentials to really make something happen. Her gorgeous dam is dark red and great uddered, as 29L is already displaying. Top 4% YW, Top 1% Milk - everything ties together on this female.

AI Bred to RVPH 73S 34F Settler 159H ET on April 19, 2024. Pasture exposed to Settler on May 1, 2024.



6

RVP 183F **LETTER PERFECT** 91L {DBP}

Female Polled RVP 91L C03102158 February 19 2023

KCF BENNETT STRATEGY Z303 ET
TH MASTERPLAN 183F
 TH 512X 145Y DOMINETTE 57B

SCHU-LAR ON TARGET 22S
 KCF MISS REVOLUTION X338 ET
 FTF PROSPECTOR 145Y
 TH 122 71I DOMINETTE 512X ET

BG LCC 11B PERFECTO 84F
GOBLE MISS PERFECTO 201J
 LCC 5815 MISS TIC TOC 925

LCX PERFECTO 11B ET
 BG 100W NICKY 31C
 JCS 240 FLINTLOCK 5815
 LCC 0124 REMETEE 715 ET

EPD'S CE: 0.9 BW: 3.2 WW: 72.8 YW: 117.8 M: 29.1 TM: 65.5

BW: 92 WW: 711

91L displays all the pigmentation in a dark color you could ever want. Remarkable EPD report card, this square-made brood cow prospect will work.

AI Bred to RVPH 73S 34F Settler 159H ET on April 19, 2024. Pasture Exposed to Settler on May 1, 2024.

BW: 85 WW: 644

Big, broad-based dark red female carrying an exclusive service to Final Print. Ideal EPD evaluation to become a steady producer.

AI Bred to RST Final Print 0016 on March 29, 2024. Pasture exposed to RVPH 73S 34F Settler 159H ET on April 17, 2024.



BW: 106 WW: 738

An in-dam purchase from ANL, where the Hi Tech cattle are well-received. Check her service to Historic, it will result in a remarkable baby.

AI Bred to NJW 160B 028X Historic 81E ET on April 5, 2024. Pasture exposed to RVPH 73S 34F Settler 159H ET on May 1, 2024.



7 ELM-LODGE KT **LOVE LETTER** 15L {MDP DBP}
Female Polled ELLA 15L C03103138 February 03 2023

KCF BENNETT STRATEGY Z303 ET
TH MASTERPLAN 183F
TH 512X 145Y DOMINETTE 57B

SCHU-LAR ON TARGET 22S
KCF MISS REVOLUTION X338 ET
FTF PROSPECTOR 145Y
TH 122 71I DOMINETTE 512X ET

ELM-LODGE CHECKMATE 21C
ELM-LODGE ENCHANTED 65E
ELM-LODGE BEDAZZLE 56B

NJW 73S W18 HOMETOWN 10Y ET
GLENVIEW 5052 MARVEL X2 ET
ELM-LODGE NEXT BIG THING 3N
ELM-LODGE YAHTZEE 45Y

EPD'S CE: 4.2 BW: 2.4 WW: 60.8 YW: 103.7 M: 24.6 TM: 55

8 RVP 80C **LASS** 90L {DLF HYF IEF MSUDF DBP}
Female Polled RVP 90L C03103406 February 19 2023

TH 113W 11X HI-TECH 17A
ANL 17A HI TECH 58W 80C
MOHICAN VIOLET 58W

TH 71U 719T MR HEREFORD 11X
TH 105S 755T GEMINI 113W
SHF RIB EYE M326 R117
CS GPR ROCK'S VIOLET 152S

DTHF FREEMAN 289F
ANL 289F MINDY 21G 106J
ANL 32E MINDY 7Z 21G

WLB HOME RUN 8Y 112C
DTHF CHERILYNE 89C
ANL 420A MOUNTAINEER 51A 32E
ANL 719T MINDY 39W 7Z

EPD'S CE: -10.1 BW: 7.9 WW: 69.9 YW: 115.8 M: 28.8 TM: 63.8



THE FORMULA TO THESE
FULL SISTERS

No matter how you score your cattle, 60L & 61L will be on your short list. Their donor dam was a past high seller from Iris Creek, who has come to River Valley and really worked. Dark in colour, great numbers, backed by a great cow and mated to Historic, all the work is done here.



NJW 79Z Z311 Endure 173D ET



ICF Nindawayma 23B 109F

9A

RVP 173D **SHE'S A LOOKER** ET 60L
{DLF HYF IEF MSUDF}
Female Polled RVP 60L C03105349 January 25 2023

KCF BENNETT ENCORE Z311 ET
NJW 79Z Z311 ENDURE 173D ET
BW 91H 100W RITA 79Z ET

SCHU-LAR ON TARGET 22S
KCF MISS REVOLUTION X338 ET
NJW 735 M326 TRUST 100W ET
REMITALL RITA 91H

ANL C HAR T100 TAHOE 86 ET 23B
ICF NINDAWAYMA 23B 109F
ICF NINDAWAYMA 303T 105Z

SHF TAHOE R117 T100
ANL 7N MAPLE 86R
GROSVENOR TITANIUM 80P 303T
ICF NINDAWAYMA 152M 103U

EPD'S CE: 6.1 BW: 3.8 WW: 66.7 YW: 111.2 M: 31 TM: 64.4

BW: 90 WW: 538
AI bred to NJW 160B 028X Historic 81E ET on April 5, 2024. Pasture exposed
to RVPH 73S 34F Settler 159H ET on May 1, 2024.

9B

RVP 173D **LAVISH** ET 61L
{DLF HYF IEF MSUDF DBP}
Female Polled RVP 61L C03105345 January 25 2023

KCF BENNETT ENCORE Z311 ET
NJW 79Z Z311 ENDURE 173D ET
BW 91H 100W RITA 79Z ET

SCHU-LAR ON TARGET 22S
KCF MISS REVOLUTION X338 ET
NJW 735 M326 TRUST 100W ET
REMITALL RITA 91H

ANL C HAR T100 TAHOE 86 ET 23B
ICF NINDAWAYMA 23B 109F
ICF NINDAWAYMA 303T 105Z

SHF TAHOE R117 T100
ANL 7N MAPLE 86R
GROSVENOR TITANIUM 80P 303T
ICF NINDAWAYMA 152M 103U

EPD'S CE: 5.5 BW: 3.7 WW: 63.8 YW: 102.8 M: 28.4 TM: 60.3

BW: 87 WW: 606
AI bred to NJW 160B 028X Historic 81E ET on April 5, 2024. Pasture exposed
to RVP 9050 Architect 46A on May 1, 2024.

“ALL THE WORK IS DONE HERE”



9B

C-W



W-C

10

RVP 80C **LASHES** 80L {DLF HYF IEF MSUDF}

Female Polled RVP 80L C03103554 February 14 2023

TH 113W 11X HI-TECH 17A
ANL 17A HI TECH 58W 80C
 MOHICAN VIOLET 58W

TH 71U 719T MR HEREFORD 11X
 TH 105S 755T GEMINI 113W
 SHF RIB EYE M326 R117
 CS GPR ROCK'S VIOLET 152S

TH 13Y 358C BOTTOM LINE 206E
ANL R 206E VANITY 100E 121J
 ANL R 17A VANITY 79B 100E

TH 403A 475Z PIONEER 358C ET
 TH 54W 719T BETH 13Y
 TH 113W 11X HI-TECH 17A
 ANL R 425X VANITY 27U 79B

EPD'S CE: -5.9 BW: 6.4 WW: 72.5 YW: 123.5 M: 33.1 TM: 69.4 BW: 99 WW: 693

Big-numbered Hi Tech daughter that is long-bodied and attractive. High-performing heifer that is in the top of the breed for WW, YW & Milk.
 Pasture exposed to NJW 76S 81E Historic 118J ET on April 29, 2024.

11

RVP 4040 **LOYAL** 117L {DBP}

Female Polled RVP 117L C03102170 March 11 2023

TH 22R 16S LAMBEAU 17Y
BOYD FT KNOX 17Y XZ5 4040
 DOSS MY EYES ADORE U DHZ5

TH 121L 63N TUNDRA 16S
 TH 62N 3L KELSEY 22R
 BOYD WORLDWIDE 9050 ET
 DHF COVER GIRL C902

REMITALL ONLINE 122L
RVP 122L JERSEY GIRL 70J
 RVP 100W CALENDAR GIRL 4C

REMITALL EMBRACER 8E
 REMITALL CATALINA 24H
 NJW 73S M326 TRUST 100W ET
 E MC 337U DIVA X50

EPD'S CE: 6.7 BW: 1.9 WW: 60.7 YW: 92.1 M: 22 TM: 52.4

BW: 79 WW: 597

We love this cherry red female that is goggled by FT Knox. Developing a great udder and excellent temperament.

Pasture exposed to NJW 76S 81E Historic 118J ET on April 29, 2024.



11



W-C

12

RVP 183F RIVER VALLEY **RITA** 89L {DBP}

Female Polled RVP 89L C03102157 February 18 2023

KCF BENNETT STRATEGY Z303 ET
TH MASTERPLAN 183F
 TH 512X 145Y DOMINETTE 57B

SCHU-LAR ON TARGET 22S
 KCF MISS REVOLUTION X338 ET
 FTF PROSPECTOR 145Y
 TH 122 71I DOMINETTE 512X ET

NJW 79Z Z311 ENDURE 173D ET
CRITT MISS RITA ET 24J
 GHC MISS UNIQUE 56A

KCF BENNETT ENCORE Z311 ET
 BW 91H 100W RITA 79Z ET
 BBSF 101N WRANGLER 29W
 GHC MISS JUNE 15T

EPD'S CE: 8 BW: 1.3 WW: 64.6 YW: 113.6 M: 23.9 TM: 56.2



Bolder || AI Service Sire

BW: 75 WW: 654

89L has a gorgeous Endure mother who came from Howard Crittenden as a past high seller. We love the phenotype 89L displays and serviced early to the popular Bolder.

AI bred to CSC 701 Bolder 901 on April 5, 2024. Pasture exposed to RVPH 73S 34F Settler 159H ET on May 1, 2024.

“WE *love* THE”
PHENOTYPE
 S H E D I S P L A Y S



13

RVP 81E **LET'R RIP** 107L {DBP}

Female Polled RVP 107L C03102163 March 03 2023

CHURCHILL SENSATION 028X
NJW 160B 028X HISTORIC 81E ET
 NJW 73S 38W DAYDREAM 160B

UPS DOMINO 3027
 CHURCHILL LADY 7202T ET
 NJW 76S P20 BEEF 38W ET
 NJW P606 72N DAYDREAM 73S

EPD'S CE: 2.8 BW: 1.1 WW: 55.6 YW: 90.2 M: 36.9 TM: 64.7

NJW 73S M326 TRUST 100W ET
RVP 100W JANGLE 108J
 RVP 70A ENTICE 153E

KCF BENNETT 3008 M326
 NJW P606 72N DAYDREAM 73S
 RVP 100W AUTHORITY ET 70A
 THM 9360 FAITH 3138

BW: 70 WW: 642
 Lovely designed Historic daughter with a low BW and huge Milk EPD. Her mother spells the RV program with Trust showing up on the bottom side.
Pasture exposed to NJW 76S 81E Historic 118J ET on April 29, 2024.



14

RVP 183F **LASSEY** 115L {DBP}

Female Polled RVP 115L C03102165 March 10 2023

KCF BENNETT STRATEGY Z303 ET
TH MASTERPLAN 183F
 TH 512X 145Y DOMINETTE 57B

SCHU-LAR ON TARGET 22S
 KCF MISS REVOLUTION X338 ET
 FTF PROSPECTOR 145Y
 TH 122 71I DOMINETTE 512X ET

RVP 9050 ARCHITECT 46A
RVP 46A JADEY 53J
 THM 3018 SYNDY 9017

BOYD WORLDWIDE 9050 ET
 RVP RCY 100W YE HAW 130Y
 THM 100W RELIABLE 3018 ET
 THM 8859 CINDY 5027

EPD'S CE: 6.8 BW: 0.5 WW: 61.9 YW: 99.1 M: 25.8 TM: 56.8

BW: 73 WW: 693
 Low BW female that is really coming into herself as a solid brood cow prospect.
Pasture exposed to NJW 76S 81E Historic 118J ET on April 29, 2024.



15

RVP HAROLDSON'S **MILEY** 31J 211L {DBP}

Female Polled RVP 211L C03108187 February 02 2023

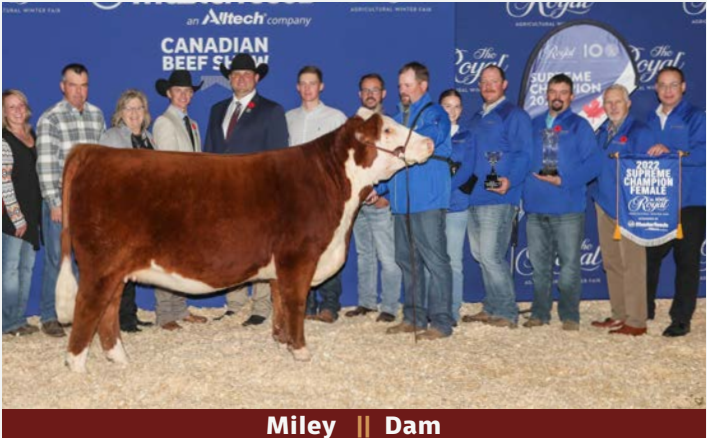
BROOKS 106A 30B ACTION 1F
BROOKS 1F 12B ACTION 31J
 BROOKS 425X SALLY 12B

MHPH 521X ACTION 106A
 GLENLEES DBK 10Y ART WORK 30B
 TH 89T 743 UNTAPPED 425X ET
 BROOKS 83U SALLY 8X

HAROLDSON'S SCC PAVATI 48G
HAROLDSON'S MILEY 48G 65J
 GRLZ MISS TAP 75D

HAROLDSON'S TRACTION ET 50E
 HAROLDSON'S WSF LASSIE 48Y 42C
 GRLZ TAPPIN' 39B
 GRLZ JOLENE 74B

EPD'S CE: 4.3 BW: 3.8 WW: 63 YW: 100.2 M: 29.5 TM: 61



BW: 91
 211L probably has as much upside to her as any in the sale, being mothered by the famed Miley (Royal Supreme & CWA Champion). The Final Print baby inside her could just be the ticket to elevate any program. Outcross pedigree programs, Miley will put a program on the map.
AI bred to RST Final Print 0016 on April 12, 2024. Pasture exposed to NJW 76S 81E Historic 118J ET on April 29, 2024.
 Owned with Haroldson's Polled Herefords.

THIS MATING COULD BE
the TICKET
 TO ANY PROGRAM



16

RVP 1042 **LUXURY** 102L {DBP}

Female Polled RVP102L C03102559 February 28 2023

HUTH FTF TORQUE C002
RST C002 TORQUE 1042
 RST MS X651 TESTED 7021

SHF YORK 19H Y02
 HUTH T013 DOMINETTE Z016
 EFBEEF TFL U208 TESTED X651 ET
 RST MS 1010 BUILT TUFF 5167

NJW 79Z Z311 ENDURE 173D ET
GLENLEES SNBR 173D REVA 65J
 GLENLEES 27C REVA 32F

KCF BENNETT ENCORE Z311 ET
 BW 91H 100W RITA 79Z ET
 NJW 73S 38W RIMROCK 27C ET
 GLENLEES 145Y REVA 1C

EPD'S CE: 4.9 BW: 3.1 WW: 75 YW: 123.5 M: 30.6 TM: 68.1

BW: 83 WW: 713

Top-grading Torque daughter who's dam was beside her mother in 2021, winning CWA Grand Champion Female. Her mother, 65J, topped the CWA sale to River Valley at \$35,000 as a heifer calf. Massive-bodied, proven cow family (Reva), good numbered, and very easy on the eyes.

AI bred to CSC 701 Bolder 901 on April 19, 2024. Pasture exposed to RVP 9050 Architect 46A on May 13, 2024.



Reva 65J with Dam 32F at CWA || Dam



Torque || Sire



17

RVP 87G **LILAC ROSE** 20L {DBP}

Female Polled RVP 20L C03101671 January 10 2023

/S MANDATE 66589 ET
NJW 133A 6589 MANIFEST 87G ET
 BW NJW 76S 8Y HOMESPUN 133A

R LEADER 6964
 /S LADY DOMINO 0158X
 NJW 73S W18 HOMETOWN 10Y ET
 NJW 55N STARDUST 76S

TDP CROSSOVER Z400
RVP Z400 EVANGELINE ET 122E
 RVP 36N TOUCH OF GOLD ET 10T

TH 133U 719T UPGRADE 69X
 ASH LIL PEANUT 203P
 HF 4L BEYOND 36N
 HAROLDSON'S CANDACE 122L 27N

EPD'S CE: -0.8 **BW:** 3.9 **WW:** 69.9 **YW:** 124.1 **M:** 31.2 **TM:** 66.2

BW: 91 WW: 616

Solid pedigree with adequate numbers and due early. We appreciate dark red functional females like 20L.

AI Bred to RST Final Print 0016 on April 5, 2024. Pasture exposed to RVP 9050 Architect 46A on May 1, 2024.





18

RVP 4013 **LUCKY LADY** 38L

Female Polled RVP 38L C03101678 January 17 2023

EFBEEF TFL U208 TESTED X651 ET
INNISFAIL WHR X651/723 4013 ET
 INNISFAIL P230 T723

EFBEEF FOREMOST U208
 EFBEEF P606 MABEL R415
 EF F745 FRANK P230
 INNISFAIL 235 R501 ET

NJW 73S M326 TRUST 100W ET
RVP 100W EASTERN LADY 120E
 THM HEARTLAND LADY 0810

KCF BENNETT 3008 M326
 NJW P606 72N DAYDREAM 73S
 THM HEARTLAND 8859 ET
 THM 163M CYNDI 8834

EPD'S CE: 2.3 BW: 3.1 WW: 63.5 YW: 101.6 M: 25.3 TM: 57.1

BW: 81 WW: 562

The picture crew fell in love with this jaw-dropping 4013 daughter - stout from every angle, 38L has as much maturity as any in the offering. Everything about this female lines up... numbers, looks and pedigree, with a great service.

AI bred to RST Final Print 0016 on March 29, 2024. Pasture exposed to RVP 9050 Architect 46A on May 1, 2024.



EVERYTHING ABOUT THIS FEMALE
Lines UP
 NUMBERS, LOOKS & PEDIGREE
 WITH A GREAT SERVICE

BW: 89 WW: 656

Lovely pedigreed heifer with all the RV favourites in her pedigree. 4013 cattle have really worked here and 45L will carry that on. Check that whopping 123 YW EPD.

AI bred to NJW 160B 028X Historic 81E ET on April 5, 2024. Pasture exposed to RVP 9050 Architect 46A on May 1, 2024.



BW: 76 WW: 636

106L is a sturdy heifer by Historic back to high producing Crossover daughter. Bred to Bolder for a dark red baby.

AI bred to CSC 701 Bolder 901 on April 19, 2024. Pasture exposed to RVP 9050 Architect 46A on May 13, 2024.



19 RVP 4013 **LILY** 45L {DBP}
Female Polled RVP45L C03101683 January 20 2023

EFBEEF TFL U208 TESTED X651 ET
INNISFAIL WHR X651/723 4013 ET
INNISFAIL P230 T723

NJW 73S M326 TRUST 100W ET
RVP 100W HEAT WAVE 26H
RVP 91Z ECLIPSE 73E

EFBEEF FOREMOST U208
EFBEEF P606 MABEL R415
EF F745 FRANK P230
INNISFAIL 235 R501 ET

KCF BENNETT 3008 M326
NJW P606 72N DAYDREAM 73S
NJW 59R 88X RIBEYE 91Z
SRF RACHAEL 4R 304Y

EPD'S CE: -0.7 BW: 5 WW: 75.9 YW: 123 M: 26.4 TM: 64.4

20 RVP 81E **LUCKY GIRL** 106L {DBP}
Female Polled RVP106L C03102162 March 03 2023

CHURCHILL SENSATION 028X
NJW 160B 028X HISTORIC 81E ET
NJW 73S 38W DAYDREAM 160B

REMITALL ONLINE 122L
RVP 122L JANUARY GIRL 33J
RVP Z400 FLOWER GIRL 103F

UPS DOMINO 3027
CHURCHILL LADY 7202T ET
NJW 76S P20 BEEF 38W ET
NJW P606 72N DAYDREAM 73S

REMITALL EMBRACER 8E
REMITALL CATALINA 24H
TDP CROSSOVER Z400
RVP 100W CALENDAR GIRL 4C

EPD'S CE: 4.9 BW: 1.9 WW: 59.5 YW: 102.4 M: 33.4 TM: 63.2

|| HEIFER CALVES



W-C

21

RVP 48K **MAHOGANY** 62M

Female Polled RVP 62M C03113884 February 19 2024

ECR VENTURE 0225
TH 30F 0225 VENTURE 48K
TH 246A 48D LORETTA 30F

NJW 84B 10W JOURNEY 53D
ECR Z311 MISS THOR 6082
TH 505U 14Z PLAYBOOK 48D
TH 508W 409Y LORETTA 246A

TH 76A 206E GROWTH FUND 248G
TH 126F 248G LADY RED 55J
ANL R&J 71D LADY RED 1238 126F

TH 13Y 358C BOTTOM LINE 206E
TH 416Y 9050 LORETTA 76A
TH 745A 7B START ME UP 71D
H RW LADY REDEEM 1238 ET

EPD'S CE: -2.7 BW: 5 WW: 70.7 YW: 109.2 M: 25.9 TM: 61.3

BW: 97

From the top of the '24 calf crop is this outcross stout-made lady that really grabs your attention. With big WW & YW EPD's, this top-bred heifer shows lots of upside to be a producer.

FROM THE TOP
OF THE 2024 CALF CROP: **MAHOGANY**



22 RVP 0016 **MADDY** 18M {HYP DBP}
 Female Polled RVP 18M C03113038 January 13 2024

BOYD 31Z BLUEPRINT 6153
RST FINAL PRINT 0016
 RST MS X651 TESTED 8032

R LEADER 6964
 NJW 91H 100W RITA 31Z ET
 EFBEEF TFL U208 TESTED X651 ET
 RST MS 0124 TIMESAWASTIN 6094

NJW 11B 6589 AUTHORITY 57G ET
GRH 57G RITA 12K
 GRH 81S LADYSPORT 9E

/S MANDATE 66589 ET
 NJW 79Z 10W RITA 11B
 NJW 8E 120J EMBASSY 81S ET
 GRH W 39 DAYEL 19A

EPD'S CE: 5.8 BW: -0.1 WW: 73.8 YW: 111.3 M: 32 TM: 68.9

BW: 86

One of the first Final Prints to be on offer. Top 3% of the entire breed from BW to YW spread. Her dam was purchased from the 2022 CWA Hereford Sale and is an excellent Authority daughter.

23 RVP 57G **MELODY** 49M {DBP}
 Female Polled RVP 49M C03113057 February 10 2024

/S MANDATE 66589 ET
NJW 11B 6589 AUTHORITY 57G ET
 NJW 79Z 10W RITA 11B

R LEADER 6964
 /S LADY DOMINO 0158X
 LJR 023R WHITMORE 10W
 BW 91H 100W RITA 79Z ET

NJW 73S M326 TRUST 100W ET
RVP 100W JANGLE 108J
 RVP 70A ENTICE 153E

KCF BENNETT 3008 M326
 NJW P606 72N DAYDREAM 73S
 RVP 100W AUTHORITY ET 70A
 THM 9360 FAITH 3138

EPD'S CE: -0.1 BW: 3.1 WW: 69.2 YW: 113.7 M: 29.5 TM: 64.1

BW: 77

Authority has really done a good job here at RV. 18M stems from a beauty Trust daughter, 49M carries the RV program pedigree to a T.

|| COW/HEIFER CALF PAIR



24

W-C



Historic || Sire of RVP 57K



Architect || Sire of RVP 94M

“WORLDS OF OPPORTUNITY” *opportunity*

24

RVP 81E RV **MISS TAP** 57K {DBP}
Female Polled RVP 57K C03091930 January 28 2022

CHURCHILL SENSATION 028X
NJW 160B 028X HISTORIC 81E ET
NJW 73S 38W DAYDREAM 160B

UPS DOMINO 3027
CHURCHILL LADY 7202T ET
NJW 76S P20 BEEF 38W ET
NJW P606 72N DAYDREAM 73S

WHITEHAWK WARRIOR 845C ET
HAROLDSON'S MISS TAP 12H
GRLZ MISS TAP 75D

UPH PROSPECTOR P152
GRANDVIEW CMR 4003 BETH Y115ET
GRLZ TAPPIN' 39B
GRLZ JOLENE 74B

EPD'S CE: 4.1 BW: 1.2 WW: 59.7 YW: 91.8 M: 39.4 TM: 69.3

BW: 81 WW: 598

AI bred to NJW 11B 6589 Authority 57G ET on May 10, 2024. Pasture exposed to RVP 57G Knolten 2K on May 23, 2024.

Potential sale topper, 57K shows worlds of opportunity. Breed-leading EPD's in all categories, note Miss Tap 75D was a past CWA Reserve Grand Female.

24A

RVP 46A **MISS MARGO** 94M {DBP}
Female Polled RVP 94M C03113901 March 26 2024

BOYD WORLDWIDE 9050 ET
RVP 9050 ARCHITECT 46A
RVP RCY 100W YE HAW 130Y

SHF RIB EYE M326 R117
MSU TCF RACHAEL 225 ET
NJW 73S M326 TRUST 100W ET
RVP 36N TOUCH OF GOLD ET 10T

EPD'S CE: 6.1 BW: 0.1 WW: 58.9 YW: 85.2 M: 38.4 TM: 67.9

BW: 78

Late March born heifer with the same characteristics as her dam. Architect cattle develop into great mother cows, like 94M will be.



24A

|| CHOICE LOT



25

W-C



RVP 108K || Paternal Half Sister to RVP 6M

Sold in the 2023 Genetic Designs Sale



Authority || Sire of RVP 6M & Service Sire to 89G

CHOICE OF COW OR CALF

25

HAROLDSON'S RKKH **TWEESTIES** 89G

Female Polled AFSY 89G C03065035 April 04 2019

H PF WYARNO 3902 ET
HAROLDSON'S WLC INSIGHT 81C
HAROLDSONS RYTHYM T100 21Z

H WCC/WB 668 WYARNO 9500 ET
JSF 12 VIOLET 4R
SHF TAHOE R117 T100
HAROLDSON'S TEMPTRESS 29R 81U

DELHAWK KAHUNA 1009 ET
RKKH TWEESTIES 1501C
ANL RL 521X SUMMEL 24X 12Z

CH ENUFF PROPHET 2913
MCR PPF MISS GOLD DOM 206 ET
TH 122 71I VICTOR 521X ET
HAROLDSON'S SUMA T100 24X

EPD'S CE: -2.3 BW: 3.4 WW: 55.4 YW: 92.4 M: 27.5 TM: 55.2

BW: 80

AI bred to NJW 11B 6589 Authority 57G ET on March 29, 2024. Pasture exposed to Authority from April 17, 2024 to July 3, 2024.

25A

RVP 57G **ALL MINE** 6M

Female Polled RVP 6M C03113034 January 07 2024

/S MANDATE 66589 ET
NJW 11B 6589 AUTHORITY 57G ET
NJW 79Z 10W RITA 11B

R LEADER 6964
/S LADY DOMINO 0158X
LJR 023R WHITMORE 10W
BW 91H 100W RITA 79Z ET

EPD'S CE: 3.7 BW: 1.2 WW: 63.7 YW: 100.2 M: 28.9 TM: 60.8

BW: 80

From the heart of the herd, we are only selling one of these prime females. We love this Authority heifer calf who is stout, lovely headed, and ready to run in a donor pen. 89G has solidified her abilities to be a front female with exceptional phenotype.



25A

C-W

|| BULL CALVES



Bolder || Sire of 24M



26

26 RVP 901 **MONOPOLY** 24M
Male Polled RVP 24M C03113958 January 16 2024

TH 22R 16S LAMBEAU 17Y
CSC 701 BOLDER 901
CSC 502 LADY DEW 701

NJW 11B 6589 AUTHORITY 57G ET
KIRBY-LONEPINE MV SYBIL 37K
KIRBY-LONEPINE SYBIL ET 37G

TH 121L 63N TUNDRA 16S
TH 62N 3L KELSEY 22R
CHURCHILL SENSATION 028X
CSC 10Y LADY DEW 502 ET

/S MANDATE 66589 ET
NJW 79Z 10W RITA 11B
XLP 75Z KELSEY 55B
KIRBY-LONEPINE SYBIL 403A

EPD'S CE: 8.7 BW: 0.2 WW: 58.5 YW: 95.3 M: 33.1 TM: 62.4

BW: 85
Stout-made, low BW Bolder son from a lovely Authority daughter.

27 RVP 57G **MAVERICK** 3M {DBP}
Male Polled RVP 3M C03113959 January 02 2024

/S MANDATE 66589 ET
NJW 11B 6589 AUTHORITY 57G ET
NJW 79Z 10W RITA 11B

REMITALL-W JFK BELMONT 162F
C&T PCL 162F KIRA 9J
C&T PCL 218Z KIRA 49C

EPD'S CE: 6 BW: 1.5 WW: 65.1 YW: 100.8 M: 26.3 TM: 58.9

BW: 82
The stud of the pen, 3M is exactly what we aim to breed. Showing early maturity with a modest BW.



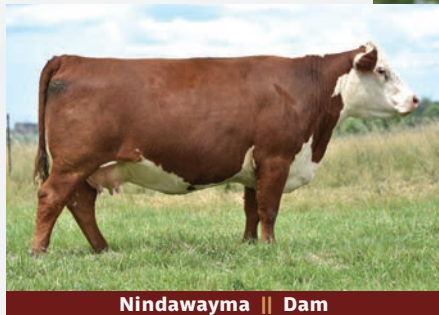
27

BW: 96

As dark red as you can breed 'em. Look for 27M's sire's big weaning and yearling weight cattle.



28



Nindawayma || Dam

BW: 81

Typical Authority son who has two maternal sisters selling as lot 9A & 9B. Buy your herd bull from a proven donor like 31M has. Great EPD spread, with excellent colour.



29

28 RVP 901 **MAIN STREET** 27M {DLP HYP DBP}
Male Polled RVP 27M C03113961 January 17 2024

TH 22R 16S LAMBEAU 17Y
CSC 701 BOLDER 901
CSC 502 LADY DEW 701

NJW 79Z Z311 ENDURE 173D ET
SRF MISS KANADA 11K
HAROLDSON'S VANITY 24E 11H

EPD'S CE: 5.4 BW: 2.6 WW: 59.5 YW: 101.5 M: 34.1 TM: 63.9

29 RVP 57G **MAXIM** 31M
Male Polled RVP 31M C03113960 January 21 2024

/S MANDATE 66589 ET
NJW 11B 6589 AUTHORITY 57G ET
NJW 79Z 10W RITA 11B

ANL C HAR T100 TAHOE 86 ET 23B
ICF NINDAWAYMA 23B 109F
ICF NINDAWAYMA 303T 105Z

R LEADER 6964
/S LADY DOMINO 0158X
LJR 023R WHITMORE 10W
BW 91H 100W RITA 79Z ET

SHF TAHOE R117 T100
ANL 7N MAPLE 86R
GROSVENOR TITANIUM 80P 303T
ICF NINDAWAYMA 152M 103U

EPD'S CE: 8 BW: 1 WW: 65.6 YW: 102.3 M: 28.2 TM: 61

|| COW/BULL CALF PAIR



30

30 MOHICAN **IRENE** 57K {DLF HYF IEF MSUDF DBP}
 Female Polled MW 57K C03101625 February 11 2022

KCF BENNETT STRATEGY Z303 ET
TH MASTERPLAN 183F
 TH 512X 145Y DOMINETTE 57B

SCHU-LAR ON TARGET 22S
 KCF MISS REVOLUTION X338 ET
 FTF PROSPECTOR 145Y
 TH 122 71I DOMINETTE 512X ET

TH 512X 17Y LAMBEAU 404D ET
MOHICAN IRENE 68F
 MOHICAN IRENE 436B

TH 22R 16S LAMBEAU 17Y
 TH 122 71I DOMINETTE 512X ET
 MOHICAN SUMMIT 411S ET
 RKH MS IRENE 3A20 6G03

EPD'S CE: 3.3 BW: 3.3 WW: 66 YW: 109.8 M: 24.5 TM: 57.5

AI bred to Glenlees AXA Evolve ET 112J on March 29, 2024. Pasture exposed to NJW 11B 6589 Authority 57G ET from April 17, 2024 to July 3, 2024.



Masterplan || Sire of MV 57K



RVP 81E **MEMPHIS** 2M (DBP)

Male Polled RVP 2M C03113962 January 02 2024

CHURCHILL SENSATION 028X
NJW 160B 028X HISTORIC 81E ET
NJW 73S 38W DAYDREAM 160B

UPS DOMINO 3027
CHURCHILL LADY 7202T ET
NJW 76S P20 BEEF 38W ET
NJW P606 72N DAYDREAM 73S

EPD'S CE: 3.7 BW: 2.2 WW: 62.5 YW: 99.5 M: 34.7 TM: 66

BW: 95



Historic || Sire of RVP 2M



30A

An excellent pair, with 57K showing her capabilities in this big, stout Historic son. 57K is in the prime of her life and due early to the now deceased Supreme Champion Evolve. 2M will be one of the top weaning weight bulls come end of September.

|| COWS



W-C

31

GH EL PASO **CHARISMA** 280H

{DLF HYF IEF MSUDF MDF DBP}
Female Polled NHP 280H C03073117 January 21 2020

NJW 73S M326 TRUST 100W ET
EL PASO 1E
EGL ANNABELLE 90A

HPH 145R AVATAR 5U
CS 228P CHARISMA ROSETTE 40A
MJT MISS 14H CHARISMA 228P

KCF BENNETT 3008 M326
NJW P606 72N DAYDREAM 73S
TRIARA IRONCLAD 732Y
RVP 33P XTRAVAGANT LADY 90X

GRANDVIEW 7OAKS SONORA 145R
ANL 4M AIMEE 5P
RS NITRO 77K
MJT MISS WESTWIND 234B 14H

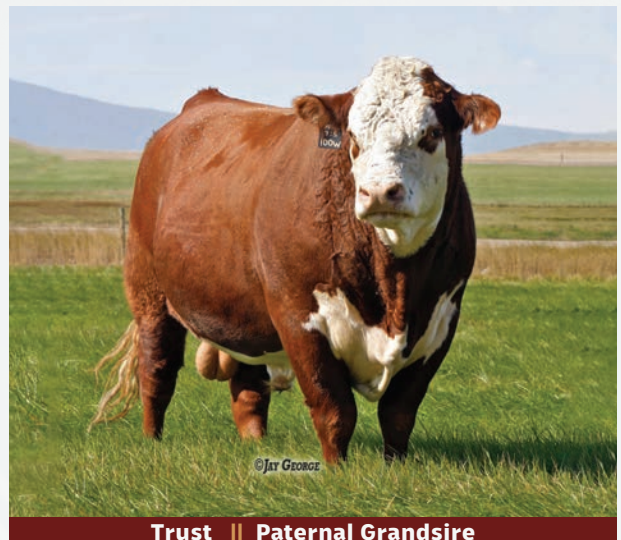
EPD'S CE: 2.1 BW: 3.3 WW: 50.7 YW: 75.7 M: 25.7 TM: 51.1

BW: 70 WW: 739

Just look at this phenomenal Trust granddaughter. Raising a top heifer calf this year, we feel her mating to Cowboss should really work. Cowboss has risen to one of our top walking bulls here at RV.

Retaining heifer calf RVP 44M. Born February 4, 2024, Regn. # C03113055.

AI bred to NJW 79Z 199B Cowboss 113H on April 12, 2024. Pasture exposed to Cowboss from May 2, 2024 to July 3, 2024.



©JAY GEORGE

Trust || Paternal Grand sire



Bottom Line || Sire



Cowboss || Service Sire



W-C

32

32 ANL R 206E **VANITY** 100E 121J {DLP HYP}
Female Polled KKL 121J C03083380 February 26 2021

TH 403A 475Z PIONEER 358C ET
TH 13Y 358C BOTTOM LINE 206E
TH 54W 719T BETH 13Y

TH 89T 755T STOCKMAN 475Z
TH 71U 17Y RITA 403A
TH 122 71I VICTOR 719T
TH 6S 45P BETH 54W

TH 113W 11X HI-TECH 17A
ANL R 17A VANITY 79B 100E
ANL R 425X VANITY 27U 79B

TH 71U 719T MR HEREFORD 11X
TH 105S 755T GEMINI 113W
TH 89T 743 UNTAPPED 425X ET
ANL R P606 VANITY 27U

EPD'S CE: -2.6 BW: 5 WW: 63.8 YW: 109.5 M: 30.3 TM: 62.2

BW: 79

Past sale feature from ANL Polled Herefords, 12J is dark red and very capable. This Cowboss mating will be a ticket inside her for sure.

Retaining bull calf RVP 21M. Born January 14, 2024, Regn. # C02802411.

AI bred to NJW 79Z 199B Cowboss 113H ET on April 5, 2024. Pasture exposed to Cowboss from May 2, 2024 to July 3, 2024.

"DARK RED & VERY CAPABLE"





BW: 81 WW: 583

Lovely-uddered United daughter who came via Blair-Athol as a past high seller. We feel Cowboss has a big future here at RV, so this mating is valuable.

Retaining bull calf RVP 84M, born February 20, 2024.

AI bred to NJW 79Z 199B Cowboss 113H ET on May 3, 2024. Pasture exposed to Cowboss from May 18, 2024 to July 3, 2024.

33



Beautiful young female from Mohican that is dark coloured and easy to handle. Big YW with solid Milk and WW.

Retaining heifer calf RVP 88M, Regn. # C03113898, born March 22, 2024.

AI bred to NJW 11B 6589 Authority 57G ET on May 10, 2024.. Pasture exposed to RVP 57G Knolton 2K on May 24, 2024.

34

33 BLAIR-ATHOL 36G **HAYLEE** 103J {DBP}
Female Polled DVL103J C03082810 March 08 2021

HAROLDSON'S UPGRADE T100 33D
HAROLDSON'S UNITED 33D 36G
HAROLDSON'S WLC MIRA ET 52B

SQUARE-D PLAINSMAN 946Y
BLAIR-ATHOL 946 HAYLEE 106B
HAROLDSON'S HAYLEE 68M 66P

SHF TAHOE R117 T100
MOHICAN MISSEY 93W
NJW 73S W18 HOMETOWN 10Y ET
HAROLDSON'S 37H MIRA ET 62K

SQUARE-D RANCHMAN 257R
SQUARE-D JAEDEN 846U
STAR AMERICA BNMHPH SS MKS 68M
WALPOLE VINDY 25F

EPD'S CE: -3.7 BW: 4.5 WW: 53.9 YW: 90.7 M: 22.1 TM: 49.1

34 MOHICAN **SCARLET** 51K
{DLF HYF IEF MSUDF DBP}
Female Polled MW 51K C03101626 February 10 2022

NJW 73S W18 HOMEGROWN 8Y ET
DM 714 8Y WILLIAM 514C ET
DM BR SAVANNA 714 ET

NJW 76S 27A SALUTE 201C
MOHICAN SCARLET 2F
MOHICAN SCARLET 17D

SHF WONDER M326 W18 ET
NJW P606 72N DAYDREAM 73S
DM BR SOONER
CL 1 DOMINETTE 095K

NJW 135U 10Y HOMETOWN 27A
NJW 55N STARDUST 76S
MOHICAN BLUEPRINT 69B
PWF CTE MISS CHANCE P403

EPD'S CE: 4.7 BW: 4.1 WW: 62.6 YW: 109.3 M: 29.7 TM: 61

BW: 78 WW: 607

Very ideal Vortex daughter with a perfectly placed udder. Raising a top-grading bull calf and bred back to Authority. You'll find this eye appealing cow in the sale runs on sale day.

Retaining bull calf RVP 33M, born January 22, 2024. AI bred to NJW 11B 6589 Authority 57G ET on April 5, 2024. Pasture exposed to Authority from April 17, 2024 to July 3, 2024.



W-C

35

BW: 75

Massive-bodied cow from ANL that has a top heifer calf this year for the replacement pen. Nice numbered, and bred to the main sire around here at RV... Authority.

Retaining heifer calf RVP 47M, Regn. # C03114217, born February 8, 2024. AI bred to NJW 11B 6589 Authority 57G ET on April 12, 2024. Pasture exposed to Authority from April 17, 2024 to July 3, 2024.



W-C

36

35 REMITALL-W **MARVEL** 4K {DBP}
Female Polled REM 4K C03094359 January 18 2022

REMITALL-W RAINMAKER ET 14E
REMITALL-W VORTEX ET 84G
REMITALL-WEST BELLE 36B

BOYD BANKER 0015 ET
REMITALL-W MARVEL ET 110D
REMITALL MARVEL 78T

KCL WPF THE PROFESSOR 7110ET
REMITALL-WEST MARVEL ET 76Y
REMITALL-WEST GAME DAY ET 74Y
REMITALL BELLE 132U

MSU TCF REVOLUTION 4R
SSF P606 MS VICTOR 803
REMITALL PATRIOT ET 13P
REMITALL MAVREL 105N

EPD'S CE: -0.2 BW: 3.7 WW: 51.3 YW: 84.1 M: 24.3 TM: 50

36 ANL 80C **NECTARINE** 133F 25H
Female Polled KKL 25H C03071516 January 29 2020

TH 113W 11X HI-TECH 17A
ANL 17A HI TECH 58W 80C
MOHICAN VIOLET 58W

TH 745A 7B START ME UP 71D
ANL 71D NECTARINE 24Y 133F
ANL 17U NECTARINE 24Y

TH 71U 719T MR HEREFORD 11X
TH 105S 755T GEMINI 113W
SHF RIB EYE M326 R117
CS GPR ROCK'S VIOLET 152S

REMITALL-W START ME UP ET 7B
RANGELINE 11Y MISS WORLD 745A
ANL P606 UNIVERSE ET 17U
PCL NECTARINE 16R 15W

EPD'S CE: -1 BW: 2.4 WW: 60.1 YW: 95.1 M: 28.2 TM: 58.3



37

C&T AYWON 358C EMERALD 5K {HYP DBP}

Female Polled TL 5K C03096798 February 12 2022

TH 89T 755T STOCKMAN 475Z
TH 403A 475Z PIONEER 358C ET
 TH 71U 17Y RITA 403A

TH 223 71I VICTOR 755T
 TH 16G 20N GEMINI 89T
 TH 22R 16S LAMBEAU 17Y
 TH 7N 45P RITA 71U

MHPH 118U ZAPPA 218Z
C&T 218Z EMERALD 77D
 SQUARE-D EMERALD 840R

MHPH 101S UMPIRE 118U
 GHC-TABOO-TCF MISS KAREN 4T
 SQUARE-D LANDMARK 130N
 SQUARE-D DANETTE 940N

EPD'S CE: -0.4 BW: 4.3 WW: 62 YW: 107.3 M: 25.1 TM: 56.1

Phenotypically as nice as you could make one. Big 107 YW, 5K shows lots of future and mated to Evolve. A past C&T high seller, we've always appreciated their cattle. **Retaining bull calf RVP 72M, born March 5, 2024.** AI bred to Glenlees AXA Evolve 112J ET on April 19, 2024. Pasture exposed to NJW 11B 6589 Authority 57G ET from June 8, 2024 to July 3, 2024.



Pioneer || Sire



Zappa 218Z || Maternal Grand sire

BW: 79

On sale day, you'll see the magnificent job 31J is doing on her stout heifer calf. Bred back to the upcoming sensation, Cowboss, this mating should be the ticket.

Retaining heifer calf RVP 50M, Regn. # C03113058, born February 10, 2024.

AI bred to NJW 79Z 199B Cowboss 113H ET on April 12, 2024. Pasture exposed to Cowboss from May 2, 2024 to July 3, 2024.



BW: 79

Nice-numbered Perfecto daughter who is right in her prime. Top 10% WW, YW, top 3% Milk.

Retaining heifer calf RVP 12M, Regn. # C03113036, born January 10, 2024.

AI bred to NJW 11B 6589 Authority 57G ET on March 29, 2024. Pasture exposed to Authority from April 17, 2024 to July 3, 2024.



38 ANL C 68E **SIDNEY** 175C 31J {DLP HYP DBP}
Female Polled KKL 31J C03083357 January 29 2021

TH 71U 17Y MOUNTAINEER 420A
ANL 420A MOUNTAINEER 787X 68E
VG KLONDIKE KATE 787X

TH 22R 16S LAMBEAU 17Y
TH 7N 45P RITA 71U
HF 4L BEYOND 36N
GHC MISS BELLE ET 98R

JC RED ROCK 36Z
ANL C 36Z SIDNEY 9Z 175C
MIL-WRAY SIDNEY 9Z

HAROLDSON'S WLCBUCK 19H ET 24T
JC 11G PEPPER 28P
GH ADAMS 179R STANLEY 180U
SQUARE-D TIELLA 908R

EPD'S CE: 3.3 BW: 3.8 WW: 47.5 YW: 78.9 M: 24.2 TM: 48

39 GOBLE **MISS PERFECTO** 201J {DBP}
Female Polled 201J BJJ C03090118 February 01 2021

LCX PERFECTO 11B ET
BG LCC 11B PERFECTO 84F
BG 100W NICKY 31C

NJW 98S R117 RIBEYE 88X ET
WLL ZOEY 3Z
NJW 73S M326 TRUST 100W ET
BG MS DOMINO 90Z

JCS 240 FLINTLOCK 5815
LCC 5815 MISS TIC TOC 925
LCC 0124 REMETEE 715 ET

BAR S LHF 028 240
LJR MSU WHITNEY 182Z
RST TIME'S A WASTIN' 0124
JB REMETEE 213

EPD'S CE: -0.7 BW: 3.5 WW: 70.1 YW: 112.1 M: 39.4 TM: 74.5



BW: 92

5J has that extra push when you talk about high performance Hereford cattle. Her 2023 heifer is in the replacement pen and doing a job on this year's effort as well. Solid numbers with a service to Authority.

Retaining heifer calf RVP 39M, Regn. # C03085522, born January 10, 2024.

AI bred to NJW 11B 6589 Authority 57G ET on April 19, 2024. Pasture exposed to Authority from May 2, 2024 to July 3, 2024.

40



BW: 83

Big hipped high performing female that will have one of the heaviest calves come weaning time. All the fundamentals are here, gentle natured, perfect udder and sound

Retaining heifer calf RVP 1M, Regn. # C03113032, born January 1, 2024.

AI bred to NJW 11B 6589 Authority 57G ET on March 29, 2024. Pasture exposed to Authority from April 17, 2024 to July 3, 2024.

41

40 CIRCLE-L **JELLY BEAN** 5J

Female Polled CSNJ 5J C03085522 January 11 2021

NJW 135U 10Y HOMETOWN 27A
NJW 76S 27A LONG RANGE 203D ET
NJW 55N STARDUST 76S

NJW 73S W18 HOMETOWN 10Y ET
NJW 4037 34S DURANGO VACA 135U
NJW BW TRAILDUST 161L
NJW 57G SPIRIT QUEEN 55N ET

MAPLEWOOD BRAIZER 101B
MAPLEWOOD HEIDI 205D
MAPLEWOOD BROOKE 131B

ELM-LODGE NEXT BIG THING 3N
DALMUIR LASSIE 201T
TRIARA WIDE LOAD 391W
MAPLEWOOD SHELLY 206Z

EPD'S CE: -0.2 BW: 3.9 WW: 61.4 YW: 101.7 M: 29.6 TM: 60.3

41 ELM-LODGE **JANGLE** 1J {MDF}

Female Polled TAX 1J C03085034 January 01 2021

SHF WONDER M326 W18 ET
NJW 73S W18 HOMEGROWN 8Y ET
NJW P606 72N DAYDREAM 73S

KCF BENNETT 3008 M326
SHF GOVERNESS 236G L37
PW VICTOR BOOMER P606
NJW 94J DEW 72N

RST TIME'S A WASTIN' 0124
ELM-LODGE COSMOPOLITAN 13C
ELM-LODGE 27K UNITY 7U

CRR ABOUT TIME 743
RST MS 1000 BLAZER 2029
ELM-LODGE PAYCHECK 11P
ELM-LODGE 12Y KARMA 27K

EPD'S CE: 0.8 BW: 3.7 WW: 51.4 YW: 87.3 M: 28.6 TM: 54.3



W-C

42

LONE-SPRUCE GOLD ELEGANCE 2H (DBP)

Female Polled CMB 2H C03072165 January 28 2020

KCF BENNETT 3008 M326
NJW 73S M326 TRUST 100W ET
 NJW P606 72N DAYDREAM 73S

RRH MR FELT 3008
 KCF MISS 459 F284
 PW VICTOR BOOMER P606
 NJW 94J DEW 72N

TDP CROSSOVER Z400
RVP Z400 GOLD ELEGANCE ET 111E
 RVP 36N TOUCH OF GOLD ET 10T

TH 133U 719T UPGRADE 69X
 ASH LIL PEANUT 203P
 HF 4L BEYOND 36N
 HAROLDSON'S CANDACE 122L 27N

EPD'S CE: 0.6 **BW:** 3.4 **WW:** 53.1 **YW:** 97 **M:** 25 **TM:** 51.6

BW: 79 WW: 666

We all like cattle a little different, but everyone will agree that this Trust daughter is just down right good. A past high seller from the Bray family, 2H has really come into herself and backed by the famed Touch of Golds. Mated to our promising Cowboss, the baby inside is very valuable as we have two daughters retained. AI bred to NJW 79Z 199B Cowboss 113H ET on April 5, 2024. Pasture exposed to Cowboss from May 2, 2024 to July 3, 2024.

“EVERYONE CAN AGREE THAT SHE IS JUST
DOWN RIGHT GOOD”

SEMEN LOTS

GLENLEES AXA **EVOLVE** ET 112J

Canadian Western Agribition || 2023 Beef Supreme
GRAND CHAMPION BULL



43

2 PACKAGES OF 5 STRAWS || GLENLEES AXA **EVOLVE** ET 112J {DLF HYF IEF MSUDF DBF}

Male Polled AHL 112J C03086014 March 06 2021

KCF BENNETT ENCORE Z311 ET
NJW 79Z Z311 ENDURE 173D ET
BW 91H 100W RITA 79Z ET

SCHU-LAR ON TARGET 22S
KCF MISS REVOLUTION X338 ET
NJW 73S M326 TRUST 100W ET
REMITALL RITA 91H

MHPH 521X ACTION 106A
RVP 106A CAMEO GIRL 45C
PCL QUEEN MAKER 118U 61Z

TH 122 71I VICTOR 521X ET
MHPH 301W DAINTY 205Y
MHPH 101S UMPIRE 118U
PCL QUEEN MAKER 36N ET 9U

EPD'S CE: 3.7 BW: 4.7 WW: 71.7 YW: 113.6 M: 31.9 TM: 67.8

BW: 93 WW: 827

Evolve is the sire who transmits hair, ease of calving and phenotypic cattle that we all love to stare at. Multiple progeny throughout the catalogue display his breeding capabilities. Evolve is now deceased, so semen will now be rare to obtain.

Owned with Glenlees Polled Herefords & AXA Polled Herefords

2023 Genetic Designs High Seller
RVP 112J LETHAL 42L



RVP 112J DIVINE LASS ET 97L
Sells as Lot 1



“UPCOMING SENSATION”



44

4 PACKAGES OF 5 STRAWS || NJW 79Z 199B **COWBOSS** 113H ET {DLF HYF IEF MSUDF MDF}

Male Polled 79Z 113H C03085036 February 13 2020

NJW 98S R117 RIBEYE 88X ET
NJW 78P 88X COWBOSS 199B ET
 NJW BW LADYSPORT DEW 78P ET

SHF RIB EYE M326 R117
 NJW 9126J DEW DOMINO 98S
 RU 20X BOULDER 57G
 SADDLE-VALLEY LADYSPORT 120J

NJW 73S M326 TRUST 100W ET
BW 91H 100W RITA 79Z ET
 REMITALL RITA 91H

KCF BENNETT 3008 M326
 NJW P606 72N DAYDREAM 73S
 FELTONS 517
 REMITALL FLORAL RITA 102F

EPD'S CE: 3.7 BW: 2.5 WW: 53.8 YW: 90.3 M: 37.9 TM: 64.8

Cowboss has really developed into a true herdbull here at RV, with great figures and presence. We have big plans for Cowboss, as he is this year's cover page boy. Backed by a superior cow, get in on the ground floor of the first semen ever offered.



W-C

SIRES THAT SPEAK FOR THEMSELVES

45

2 PACKAGES OF 5 STRAWS || INNISFAIL WHR X651/723 4013 ET {DLF HYF IEF MSUDF MDF}

Male Polled IF 4013 C03054441 September 10 2014

EFBEEF FOREMOST U208
EFBEEF TFL U208 TESTED X651 ET
EFBEEF P606 MABEL R415

FELTONS SOUNDER 957
EFBEEF G824 KATE S610 ET
EF SCHU-LAR N106 OF 009K 434V
EF G824 MABEL N174

EF F745 FRANK P230
INNISFAIL P230 T723
INNISFAIL 235 R501 ET

FELTONS ENDURANCE 745
FELTONS KATE P38
FELTONS LEXUS 235
FELTONS KATE P26

EPD'S CE: 0.3 BW: 4.4 WW: 83.1 YW: 130.4 M: 23.3 TM: 64.9

Owned with Innisfail Farm



45

TC



46

46

4 PACKAGES OF 5 STRAWS || NJW 11B 6589 **AUTHORITY** 57G ET {DLF HYF IEF MSUDF DBF}

Male Polled 11B57G C03079615 February 07 2019

R LEADER 6964
/S MANDATE 66589 ET
/S LADY DOMINO 0158X

HYALITE ON TARGET 936
R MISS REVOLUTION 1009
SHF RIB EYE M326 R117
/S LADY DOMINO 652S

LJR 023R WHITMORE 10W
NJW 79Z 10W RITA 11B
BW 91H 100W RITA 79Z ET

KJ C&L J119 LOGIC 023R ET
LJR MICKEY 278N
NJW 73S M326 TRUST 100W ET
REMITALL RITA 91H

EPD'S CE: 7.9 BW: 0.2 WW: 75.1 YW: 113.2 M: 30.2 TM: 67.8

Authority is the all-around sire who never misses, no matter who he is crossed with. A true breeding bull in every sense, from remarkable EPD's, sound structure, colour, pedigree, and eye appeal.

AUTHORITY'S

portfolio



RVP 6K || 2023 Genetic Designs High Seller



RVP 3M || Sells as Lot 28



KIRBY-LONEPINE MV SYBIL 37K

47 TL 743 DREAMIN ET 1H {DLF HYF IEF MSUDF}

Female Polled THUR 1H C03072341 January 01 2020

THM DURANGO 4037
CRR ABOUT TIME 743
 CRR D03 CASSIE 206

CS BOOMER 29F
 THM 7085 VICTRA 9036
 SHF INTERSTATE 20X D03
 CRR 475E CASSIE 838

SHF RIB EYE M326 R117
NJW 735 R117 DREAMIN 149X
 NJW P606 72N DAYDREAM 73S

KCF BENNETT 3008 M326
 HVH MISS HUDSON 83K 8M
 PW VICTOR BOOMER P606
 NJW 94J DEW 72N

EPD'S CE: 1.5 BW: 2.7 WW: 45.3 YW: 71.2 M: 27.4 TM: 50.1

A direct daughter of our Donor "Dreamin". This cow is moderate, functional, and easy fleshing. Nice uddered youthful cow that has been a favourite around here. **AI bred on March 24, 2024 to CSC 701 Bolder 901. Pasture exposed to TL 174E Kinetic 6K April 21 - June 1, 2024. Preg checked August 8, 2024. Ultrasound safe to AI.**



49

47A TL 20H DREAMIN 3M {DBP}

Female Polled THUR 3M C03113808 January 5 2024

MCCOY Z426 LEGACY 9F
MANN'S MARKSMAN 20F 20H
 MANN'S DAWN 7B 20F

MOHICAN THM EXCEDE Z426
 MCCOY Z311 CONNIE 56D
 ANL 2447 GAME CHANGER 58W 41D
 MANN'S DAWN 21Y 7B

EPD'S CE: 1.2 BW: 2.2 WW: 45.7 YW: 77.8 M: 22.5 TM: 45.4

Angular fronted this calf presents a moderate frame. She is quiet to work around and got put in our sale pen because more than once, Katrina and I thought she would represent our program at the moment. Her sire is producing calves with style and pigment.



49A

48 TL 20H ASPEN 16M {HYP DBP}

Female Polled THUR 16M C03113811 January 31 2024

MCCOY Z426 LEGACY 9F
MANN'S MARKSMAN 20F 20H
 MANN'S DAWN 7B 20F

MOHICAN THM EXCEDE Z426
 MCCOY Z311 CONNIE 56D
 ANL 2447 GAME CHANGER 58W 41D
 MANN'S DAWN 21Y 7B

HAROLDSON'S INSIGHT ET 201D
TL 201D ASPEN 17J
 KIPPENHAME ASPEN 6A

CHURCHILL RED BULL 200Z
 TL 5073 JESSICA 751U
 MSU TCF REVOLUTION 4R
 KIPPENHAME YARDLEY 11Y

EPD'S CE: 1.3 BW: 2.3 WW: 49.1 YW: 84.8 M: 23.6 TM: 48.2

This Marksman daughter is larger and longer framed, we feel she puts a lot together well. We sold a yearling to AXA a few years back that shares the Aspen 5A female pedigree with 16M, a solid cow family that keeps giving us good ones.



50



Marksman || Sire of Heifers



TL Aspen 17J || Dam of 16M



Bolder || Service Sire to 1H

IRIS CREEK FARMS



49

W-C

49 ICF **WILMA** 24E 119M {DLF HYF IEF MSUDF DBF}
 Female Polled ICF 119M C03113345 January 19, 2024

H BK CCC SR GAME CHANGER ET
HAROLDSON'S JVJ ROYAL 24E
 HAROLDSON'S AD JESSICA 48Y 13B

KJ HVH 33N REDEEM 485T ET
 NJW 78P 63N LADYSPORT 51W ET
 HAROLDSONS WLC RHINO ET 48Y
 HAROLDSON'S WS JESSICA 4T 60X

ANL C HAR T100 TAHOE 86 ET 23B
ICF WILMA 23B 102G
 ICF WILMA 100W 120C

SHF TAHOE R117 T100
 ANL 7N MAPLE 86R
 NJW 73S M326 TRUST 100W ET
 ICF WILMA 152M 127U

EPD'S CE: -4.9 BW: 6.8 WW: 65.7 YW: 109.2 M: 30.1 TM: 63.0

The Wilma cow family forms the base of the ICF herd. Seven generations of that cow family stand behind this heifer. A maternal sister was purchased in the 2023 Genetic Designs Sale by Oulton Farms in Nova Scotia. There is no guess work here, this one should make a great cow



ICF Wilma 7165 114K || Maternal Sister

2023 Genetic Designs High Seller to Oulton Farms



50

ICF NINDAYWAYMA 183F 104M {DBF}

Female Polled ICF 104M C03113338 January 4, 2024

KCF BENNETT STRATEGY Z303 ET
TH MASTERPLAN 183F
 TH 512X 145Y DOMINETTE 57B

SCHU-LAR ON TARGET 22S
 KCF MISS REVOLUTION X338 ET
 FTF PROSPECTOR 145Y
 TH 122 71I DOMINETTE 512X ET

ANL C HAR T100 TAHOE 86 ET 23B
ICF NINDAYWAYMA 23B 101J
 ICF NINDAYWAYMA 303T 105Z

SHF TAHOE R117 T100
 ANL 7N MAPLE 86R
 GROSVENOR TITANIUM 80P 303T
 ICF NINDAYWAYMA 152M 103U

EPD'S CE: -3.9 BW: 5.9 WW: 74.0 YW: 125.7 M: 22.4 TM: 59.4

Our Nindawayma cow family has left us a great group of cows. This calf should be no exception. Her dam is a full sister to the River Valley donor cow ICF 109F, who is making a statement in the River Valley herd.
Tested Delayed Blindness free.



ICF 107L
 Reserve Calf Champion at
 Royal Agricultural Winter Fair

NO GUESSWORK HERE



W-C

51

ICF NINDAYWAYMA 201H 303M

Female Polled ICF 303M C03113351 March 3, 2024

NJW 135U 10Y HOMETOWN 27A
ICF HELLUVA 27A 201H
 ICF WILMA 303T 101A

NJW 73S W18 HOMETOWN 10Y ET
 NJW 4037 34S DURANGO VACA 135U
 GROSVENOR TITANIUM 80P 303T
 ICF WILMA 1G 404N

ANL C HAR T100 TAHOE 86 ET 23B
ICF NINDAWAYMA 23B 208J
 ICF NINDAWAYMA 100W 202B

SHF TAHOE R117 T100
 ANL 7N MAPLE 86R
 NJW 73S M326 TRUST 100W ET
 ICF NINDAWAYMA 303T 329Y

EPD'S CE: -6.7 **BW:** 7.2 **WW:** 68.1 **YW:** 115.3 **M:** 27.7 **TM:** 61.8

This is just a March baby that has caught our eye since birth. Some of that may be from her quiet, friendly nature. She would make a great Junior project. Her sire, ICF Helluva, has proven he can work in our purebred and commercial herd and gives you another chance to get the Wilma cow family into your herd.



IRIS CREEK FARMS
 - THE RIBEYS -

This heifer has a pedigree you need to study. She is a maternal sister to the River Valley donor cow ICF Nindawayma 24B 109F. A full sister was purchased in Genetic Designs 2023 by Junior member Ivadel Reid from Saskatchewan. Her sire should need no introduction, Royal is leaving some beautiful Hereford females. Her service to calving ease sire, Churchill Amsterdam 247K ET, should make a dark red one and with any luck, a pair of goggle eyes.

AI bred to Churchill Amsterdam 247K ET on May 3, 2024. Preg checked safe to AI. No exposure.



52 ICF **NINDAYWAYMA** 24E ET 124L
 {DLF HYF IEF MSUDF DBF}
 Female Polled ICF 124L C03104512 January 23, 2023

H BK CCC SR GAME CHANGER ET
HAROLDSON'S JVJ ROYAL 24E
 HAROLDSON'S AD JESSICA 48Y 13B

KJ HVH 33N REDEEM 485T ET
 NJW 78P 63N LADYSPORT 51W ET
 HAROLDSONS WLC RHINO ET 48Y
 HAROLDSON'S WS JESSICA 4T 60X

GROSVENOR TITANIUM 80P 303T
ICF NINDAWAYMA 303T 105Z
 ICF NINDAWAYMA 152M 103U

LAGRAND RELOAD 80P ET
 GROSVENOR MS SUPREME 29F 508N
 GHC PREMIER 152M
 ICF NINDAWAYMA 36N 213S

EPD'S CE: -7.6 BW: 6.4 WW: 57.3 YW: 104.6 M: 28.7 TM: 57.4



ICF REFERENCE SIREs



HAROLDSON'S JVJ **ROYAL** 24E



TH **MASTERPLAN** 183F

HAROLDSON'S MARVEL 7437 ET 39K

POLLED RESERVE GRAND CHAMPION FEMALE



H MONTGOMERY 7437 ET X HAROLDSON'S HLV MARVEL 48Y 12B

RV DONORS



RVPH 160Z254G **DAYDREAM** 146J



NJW 141C 203D **DAYDREAM** 184H



NJW 79Z 33B **RITA** 291H ET



ICF **NINDAWAYMA** 23B 109F



HAROLDSON'S **MILEY** 65J

REFERENCE SIRE



REF RVPH 73S 34F **SETTLER** 159H ET
 {DLF HYF IEF MSUDF MDF}
 Male Polled 159H73S C03079614 February 22, 2020

NJW 98S R117 RIBEYE 88X ET
NJW 11B 88X SETTLER 34F ET
 NJW 79Z 10W RITA 11B

SHF RIB EYE M326 R117
 NJW 9126J DEW DOMINO 98S
 LJR 023R WHITMORE 10W
 BW 91H 100W RITA 79Z ET

PW VICTOR BOOMER P606
NJW P606 72N DAYDREAM 73S
 NJW 94J DEW 72N

REMITALL BOOMER 46B
 PW VICTORIA 964 8114
 RU 20X BOULDER 57G
 NJW D32 CLAIRE 94J

EPD'S CE: 6.2 BW: 1.5 WW: 48.9 YW: 78.1 M: 32.1 TM: 56.6



REF NJW 160B 028X **HISTORIC** 81E ET
 {DLF HYF IEF MSUDF MDF DBF}
 Male Polled 160B 81E C03072832 February 9, 2017

UPS DOMINO 3027
CHURCHILL SENSATION 028X
 CHURCHILL LADY 7202T ET

CL 1 DOMINO 9126J 1ET
 UPS MISS DIAMOND 1353
 GH RAMBO 279R
 CL 1 DOMINETTE 301N

NJW 76S P20 BEEF 38W ET
NJW 73S 38W DAYDREAM 160B
 NJW P606 72N DAYDREAM 73S

SHF PROGRESS P20
 NJW 55N STARDUST 76S
 PW VICTOR BOOMER P606
 NJW 94J DEW 72N

EPD'S CE: 7.3 BW: -0.2 WW: 54.0 YW: 82.4 M: 39.6 TM: 66.6



REF RST **FINAL PRINT** 0016
 {DLF HYF IEF MSUDF MDF}
 Male Polled 0016 C03103744 February 4, 2020

R LEADER 6964
BOYD 31Z BLUEPRINT 6153
 NJW 91H 100W RITA 31Z ET

HYALITE ON TARGET 936
 R MISS REVOLUTION 1009
 NJW 73S M326 TRUST 100W ET
 REMITALL RITA 91H

EFBEEF TFL U208 TESTED X651 ET
RST MS X651 TESTED 8032
 RST MS 0124 TIMESAWASTIN 6094

EFBEEF FOREMOST U208
 EFBEEF P606 MABEL R415
 RST TIME'S A WASTIN' 0124
 RST MS R117 RIB EYE 9009

EPD'S CE: 6.8 BW: -1.2 WW: 84.1 YW: 126.3 M: 36.3 TM: 78.4

REFERENCE SIREs



NJW 79Z Z311 **ENDURE** 173D ET

{DLF HYF IEF MSUDF MDF DBF}

Male Polled 79Z173D C03054922 February 22, 2016

SCHU-LAR ON TARGET 22S
KCF BENNETT ENCORE Z311 ET
 KCF MISS REVOLUTION X338 ET

SCHU-LAR 5N OF 9L 3008
 SCHU-LAR 208 OF 1H 121 ET
 MSU TCF REVOLUTION 4R
 JW 718 VICTORIA 9106

NJW 73S M326 TRUST 100W ET
BW 91H 100W RITA 79Z ET
 REMITALL RITA 91H

KCF BENNETT 3008 M326
 NJW P606 72N DAYDREAM 73S
 FELTONS 517
 REMITALL FLORAL RITA 102F

EPD'S CE: 7.1 BW: 3.9 WW: 73.8 YW: 123.5 M: 34.5 TM: 71.4



RVP 9050 **ARCHITECT** 46A

{DLF HYF IEF MSUDF DBF}

Polled RVP 46A C02981745 January 30, 2013

SHF RIBEYE M326 R117
BOYD WORLDWIDE 9050 ET
 MSU TCF RACHAEL 22S ET

KCF BENNETT 3008 M326
 HVH MISS HUDSON 83K 8M
 FELTONS LEGEND 242
 MSU TCF RACHAEL ET 54N

NJW 73S M326 TRUST 100W ET
RVP RCY 100W YE HAW 130Y
 RVP 36N TOUCH OF GOLD ET 10T

KCF BENNETT 3008 M326
 NJW P606 72N DAYDREAM 73S
 HF 4L BEYOND 36N
 HAROLDSON'S CANDACE 122L 27N

EPD'S CE: 8.3 BW: -0.9 WW: 59.6 YW: 82 M: 35.1 TM: 64.9



NJW 76S 27A **LONG RANGE** 203D ET

{DLF HYF IEF MSUDF MDF}

Polled 76S 203D C03070970 February 29, 2016

NJW 73S W18 HOMETOWN 10Y ET
NJW 135U 10Y HOMETOWN 27A
 NJW 4037 34S DURANGO VACA 135U

SHF WONDER M326 W18 ET
 NJW P606 72N DAYDREAM 73S
 THM DURANGO 4037
 NJW P606 80L DAYDREAM 34S ET

NJW BW TRAILDUST 161L
NJW 55N STARDUST 76S
 NJW 57G SPIRIT QUEEN 55N ET

NJW 6Z WRANGLER 20E
 SADDLE-VALLEY LADYSPORT 120J
 RU 20X BOULDER 57G
 GK SPIRIT QUEEN 42A

EPD'S CE: 2.3 BW: 3.0 WW: 65.6 YW: 111.2 M: 38.8 TM: 71.6



THANK YOU

TO OUR GENETIC DESIGNS XIX BUYERS

- * 719 Cattle
 - A M Ranching - Oak Lake, MB
 - Acorn Ridge Polled Herefords - Kleefeld, MB
 - Airriess Acres - Wadena, SK
 - Alora Farms - Odessa, ON
 - ANL Polled Herefords - Steelman, SK
 - Aulder Creek Farms - Cambridge, ON
 - AXA Farms - Hampton, NB
 - Bar JM Farm - Douglas, ON
 - Blair Athol Polled Herefords
- * Blairs.Ag Cattle Company - Lanigan, SK
 - Brooks Farm - Alameda, SK
 - Chittick Farms - Mayerthorpe, AB
 - Coulee Crest Herefords - Red Deer County, AB
 - Crittenden Land & Cattle - Imperial, SK
 - Dales Homestead Farms - Cargill, ON
 - Donald Bellamy - Owen Sound, ON
 - Elmlodge Polled Herefords - Indian River, ON
 - Everett Hunter - Smiths Falls, ON
 - Ferme Beaumont - Ste Catherine De La, QC
 - Franken Farms - Glen Ewen, SK
- * Haroldson's Polled Herefords - Wawota, SK
 - Iris Creek Farms - Paisley, ON
 - * Jesse Kenwell
- * John Ezell - Schenectady, NY
 - Keynote Farms - Eldorado, ON
 - LV Farms Ltd - Midale, SK
 - Manns Polled Herefords - Austin, MB
- * Maple Dale Farms - Mount Forest, ON
 - Maple Leaf Herefords - Baie De Bouctouche, NB
 - Marbren Farm - Coldwater, ON
 - McDonald Farm Polled Herefords - Kansas, USA
 - Medonte Highlands Polled Herefords - Orillia, ON
 - * Mike Goodine - Bear Island, NS
- * Northern Livestock Sales - Lloydminster, SK
 - Oulton Farms - Windsor, NS
 - * Powell Ranching - Killaly, SK
 - Red Oak Farms - Akwesasne, ON
- * Red Wing Farms Ltd - Special Area No. 3, AB
 - Roselyn Farms - Southampton, NS
 - Samuel Gale - Fenelon Falls, ON
 - Shamrock Polled Herefords - Ashton, ON
 - The Cliffs Farm - Kurtis Reid
 - Thunderbrook Farms - Amherst, NS
 - Twin View Polled Herefords, Strathclair, MB
 - Wil-B Cattle Company - Renfrew, ON

*** Denotes Volume Buyers**

TERMS & CONDITIONS

TERMS:

The terms of the sale are cash or cheque, payable at par at the sale location. The right of property shall not pass until after settlement has been made; no invoicing on buyers in attendance unless previous arrangements have been made. Every animal sells to the highest bidder and in cases of disputes, the auctioneer's decision will be final. Announcements from the auction block will take precedence over the printed matter in the catalogue. Current exchange rates will be announced sale day. All monies are in Canadian funds.

CERTIFICATE OF REGISTRATION:

Each animal will carry papers issued by the Canadian Hereford Association unless otherwise stated. A certificate of registry duly transferred will be furnished to the buyer for each animal after payment has been made.

PEDIGREE ESTIMATES

Pedigree Estimates (PE) are created on the projected mating of the animal's sire and dam based on averages of the two, creating estimated values that do not hold the same accuracy of actual EPDs issued from the association and should be used as such.

HEALTH:

All animals in the sale have met all necessary health requirements.

GUARANTEE:

Each animal becomes the purchaser's risk immediately after the animal is sold. All animals in this sale will be sold under the terms and guarantees set forth by the Canadian Hereford Association with regard to health, freedom from defects and from both reproductive and specific genetic unsoundness.

PREGNANCY INFORMATION:

All serviceable age females have been pregnancy examined by an accredited veterinarian, giving an estimated length of gestation. This estimated gestation period shall be used only as a guideline to calving and is not a guarantee of actual service.

LIABILITIES:

All persons attend the sale at their own risk. The seller, facility owner and sale manager assume no liability legal or otherwise, for any accidents that occur. It is understood that T Bar C Cattle Co. (2013) Ltd. is acting only as a medium between buyer and seller and is not responsible for any failure on the part of either party to live up to his obligations. Neither does T Bar C Cattle Co. (2013) Ltd. assume any financial obligations to collect or enforce collection of any monies between parties and any legal action that may in exceptional cases be taken must be between the buyer and the seller. T Bar C Cattle Co. (2013) Ltd. assumes no responsibility for any credit extended by the seller to the buyer. The buyer must look to the seller for fulfillment of all guarantees and representations made hereunder.

Delivery:

Will be provided at cost at the buyers option and risk. Instructions for delivery must be given at time of settlement. No cattle will be released until after the conclusion of the sale.

PHONE, MAIL, WIRE BIDS:

Bidders unable to attend the sale may phone, wire or mail their bids and instructions to the sale manager, auctioneer or special representatives. Bids must be received in sufficient time prior to the sale.

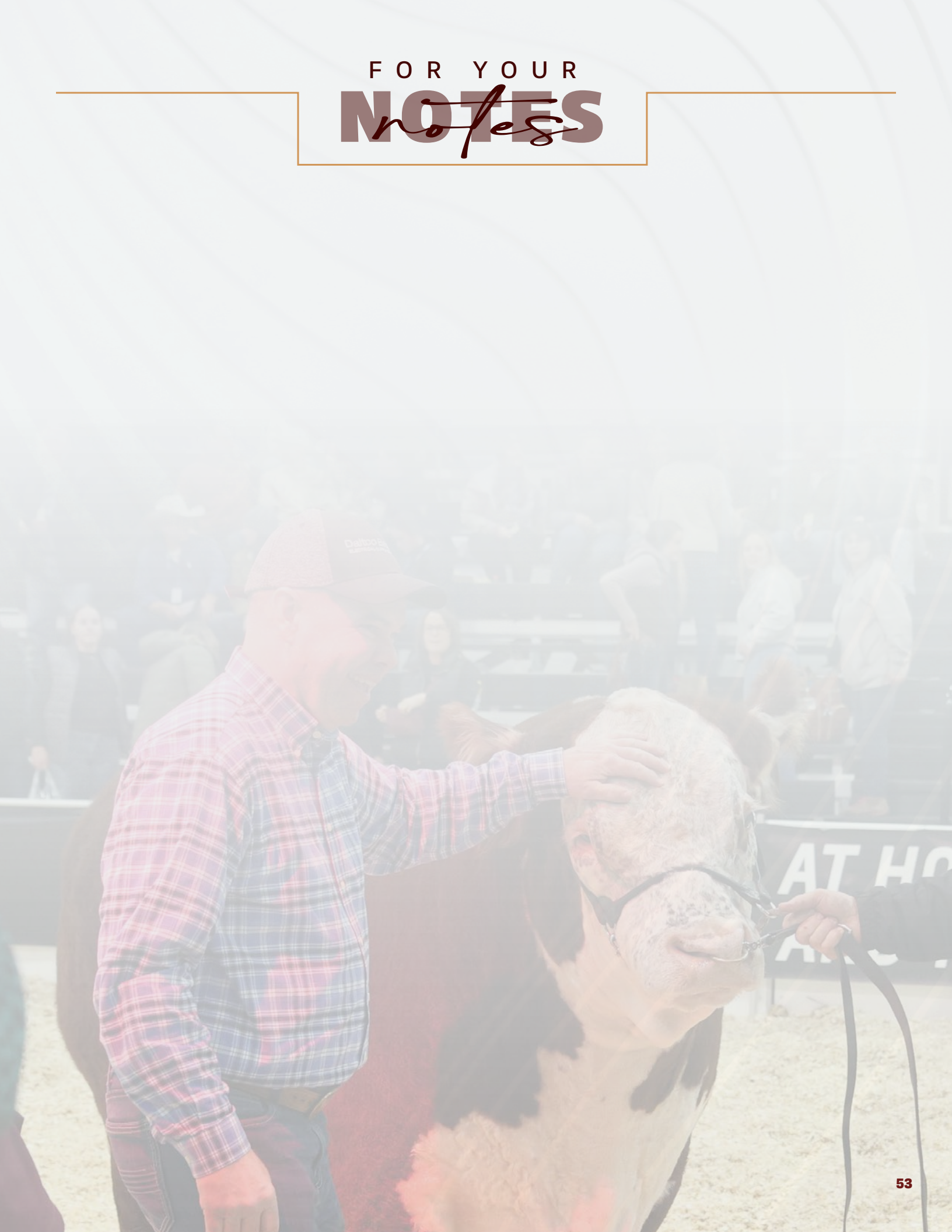
INSURANCE:

We strongly recommend that insurance is purchased for full value.

ERRORS:

All announcements at sale time, written or oral, supersede any written material in the catalogue.

FOR YOUR
NOTES
notes



Return Undeliverable
Canadian Addresses To:

T Bar C Cattle Co. Ltd.
Box 2330, Warman, SK
S0K 4S0



DIRECTIONS

From the West, take Hwy 401 to Napanee. Exit on Hwy 41 North (Exit 579). Turn right on Goodyear Road. Goodyear Road runs into County Road 11. Go straight on County Road 11 to Embury Road. **River Valley is located at 398 Embury Road.**

From the East, take Hwy 401 to Camden East. Turn left at 4-way stop on Camden East. Turn right at 3-way stop on Newburgh. Turn left at Academy Street. Turn right at Embury Road. **River Valley is located at 398 Embury Road.**

From Toronto Airport, follow 401 East to Exit 579, 1½ to 2 hours driving time.

From Syracuse, NY Airport, North on Interstate 81 to the Canadian Border take Highway 401 W.

